

**NUCLEAR PROPULSION TECHNOLOGY**

**ADVANCED FUELS TECHNOLOGY**

**WALTER A. STARK, JR.  
LOS ALAMOS NATIONAL LABORATORY**

**OCTOBER 21, 1992**

**NP-TIM-92**

Los Alamos

**NTP REACTOR & FUEL REQUIREMENTS**

**REACTOR REQUIREMENTS**

**FUEL REQUIREMENTS**

**PERFORMANCE:**

**Specific Impulse >925 sec**  
**Thrust-to-Weight >8**  
**Single Burn Time 1 hr**  
**Operating Life Time 10 hr**  
**Restart s >10**

**Fuel Temperature > 3000K**  
**Uranium Loading > 0.8 g/cc**  
**Thermal & Chemical Stability**  
**Low Diffusion Rates**  
**Thermal Shock Resistance**

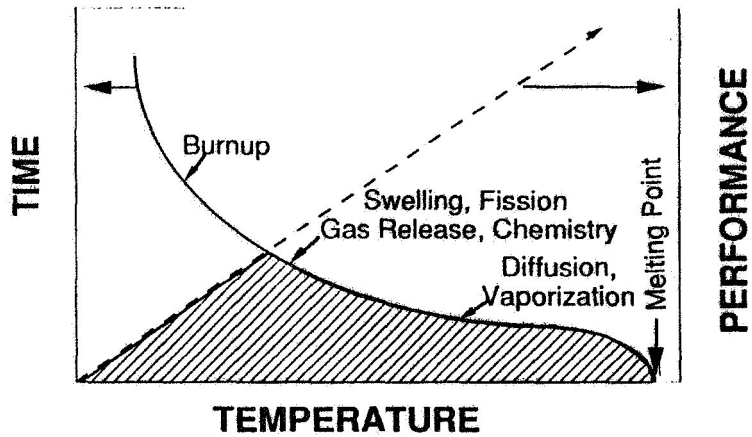
**SAFETY:**

**ALARA radiation**  
**Large margin to failure**  
**Redundancy**  
**Fast restart**

**FP retention**  
**High Melting Point**  
**Robust Fuel Elements**  
**Thermal Shock Resistance**

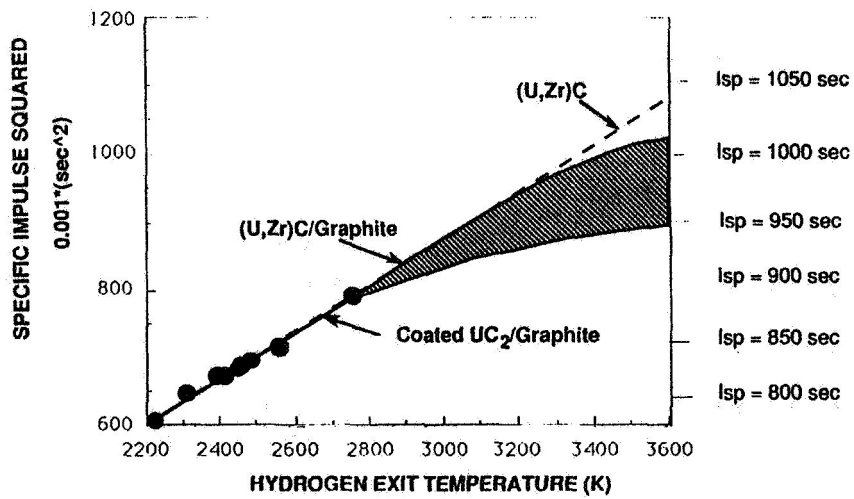
Los Alamos

## NUCLEAR PROPULSION TRADE-OFFS



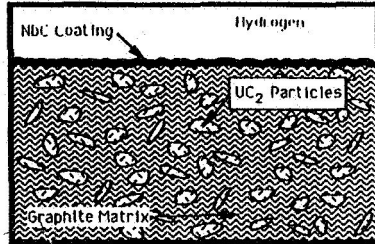
Los Alamos

## PROPULSION EFFICIENCY AND TEMPERATURE

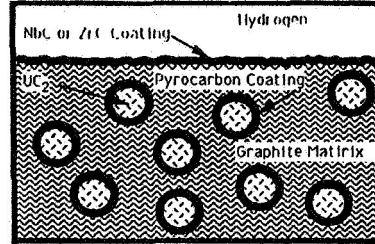


Los Alamos

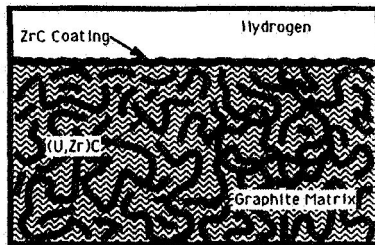
## ROVER FUEL TYPES



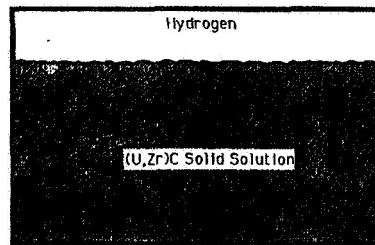
UC<sub>2</sub> Particles/Graphite Matrix



PyC Coated UC<sub>2</sub> Spheres/Graphite Matrix



Carbide/Graphite Composite



Carbide Solid Solution

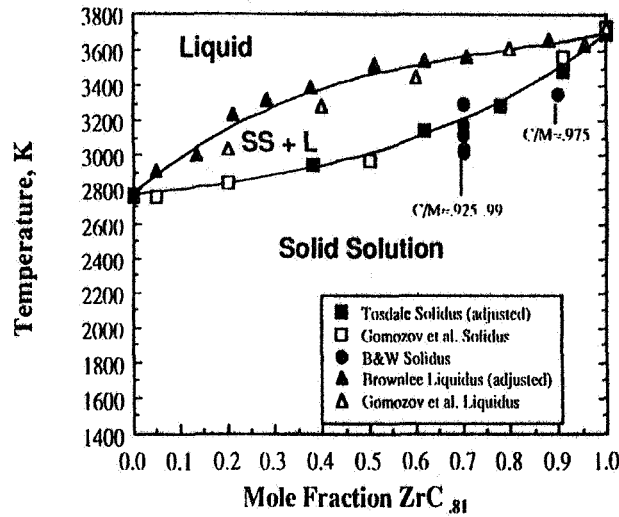
Los Alamos

## URANIUM FUEL COMPOUNDS

Property	UO <sub>2</sub>	UC	UC <sub>2</sub>	UN	U <sub>.2</sub> Zr <sub>.8</sub> C <sub>.99</sub>
Density, g/cc	10.96	13.63	11.68	14.32	8.01
U Density, g/cc	9.66	12.97	10.60	13.52	2.88
Melting Point, K	3100	2775	2710	3035*	3350
Thermal Expansion, 10 <sup>-6</sup> / K (@ 1273 K)	10.1	11.2	12.0	8.9	7.6
Thermal Conductivity, W/cm K (@ 1273K)	0.035	0.23	0.07	0.25	0.3

Los Alamos

## UC-ZrC PSEUDO-BINARY PHASE DIAGRAM



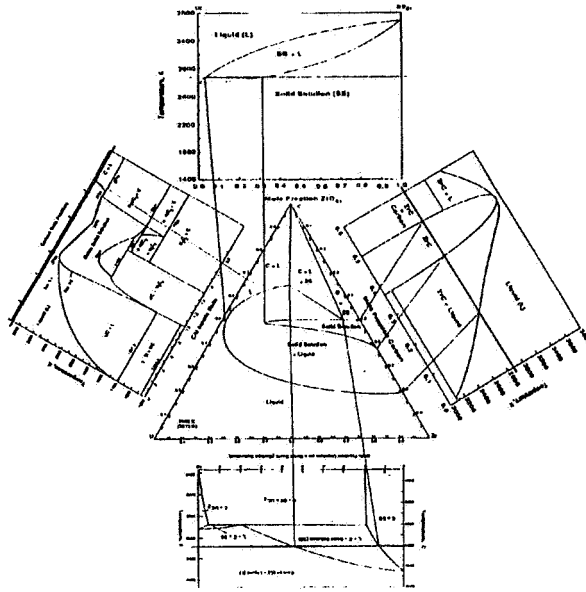
Los Alamos

## MAJOR SOURCES OF DATA U-Zr-C PHASE DIAGRAM

- Uranium - Carbon Binary
- Uranium Carbide - Zirconium Carbide Pseudo-Binary
- Uranium Dicarbide - Zirconium Carbide Pseudo-Binary
- Zirconium - Carbon Binary
- Calculations - Chang Formulation
- Butt and Wallace

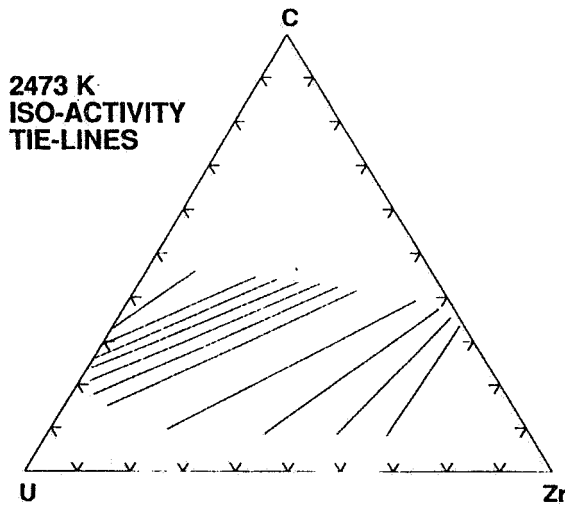
Los Alamos

### PHASE DIAGRAM "OPTIMIZATION"



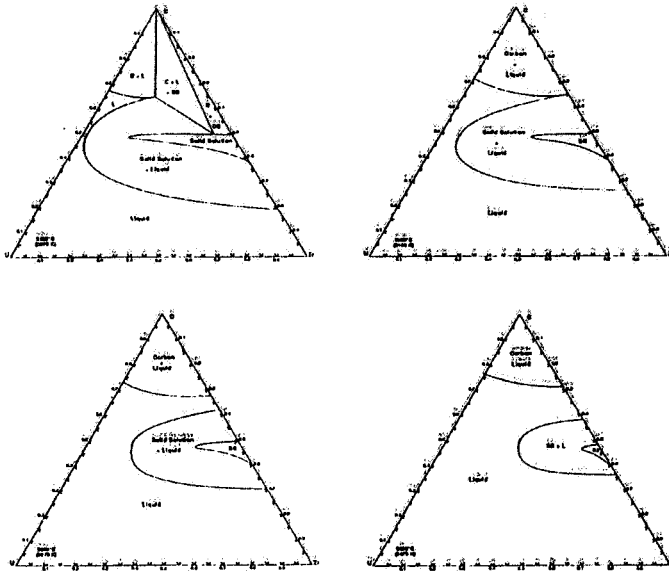
Los Alamos

### SOLIDUS - LIQUIDUS CALCULATION



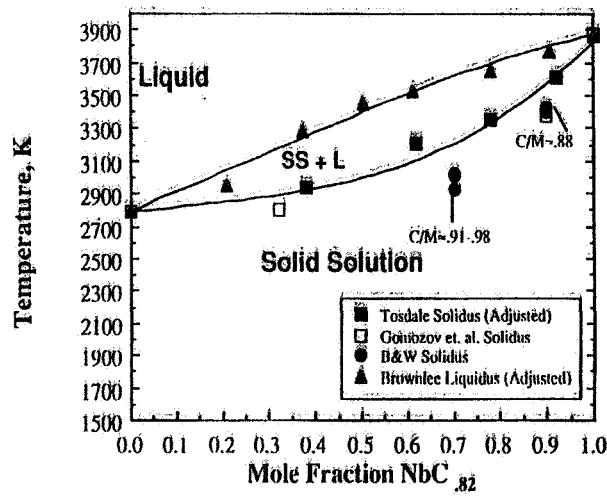
Los Alamos

### U-Zr-C ISOTHERMAL SECTIONS



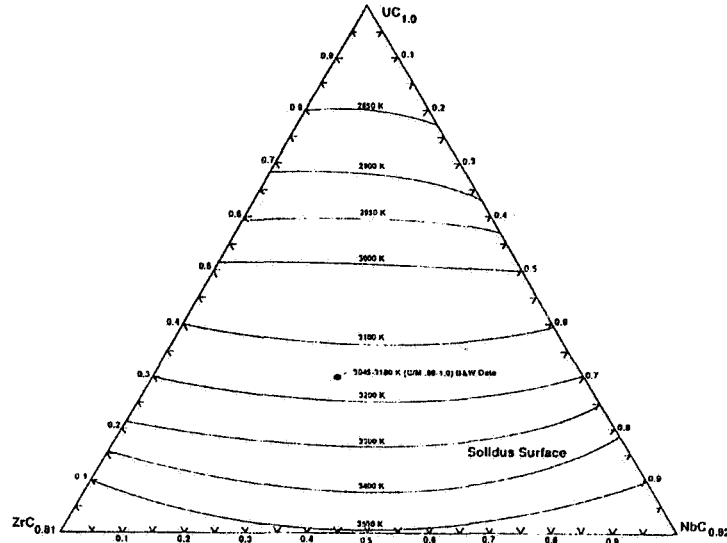
Los Alamos

### UC-NbC PSEUDO-BINARY PHASE DIAGRAM



Los Alamos

## UC-NbC-ZrC PSEUDO TERNARY SYSTEM



Los Alamos

## MELTING POINT EXPERIMENTS

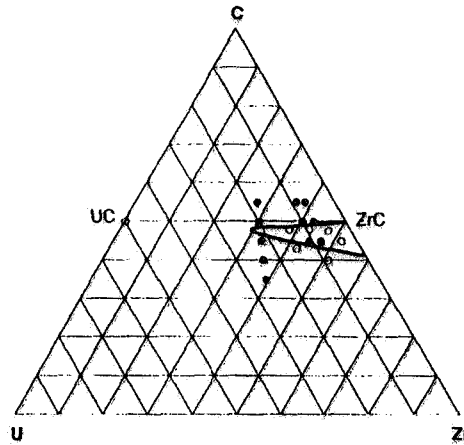
SAMPLE FABRICATION  
COMPOSITION  
FABRICATION

MEASUREMENT

ANALYSIS

Los Alamos

## PRELIMINARY MELT POINT COMPOSITIONS



U-Zr-C Ternary Diagram  
3273 K ISOTHERMAL SECTION

Los Alamos

## SAMPLE FABRICATION TECHNIQUES

COLD PRESS, REDUCE, AND  
SINTER

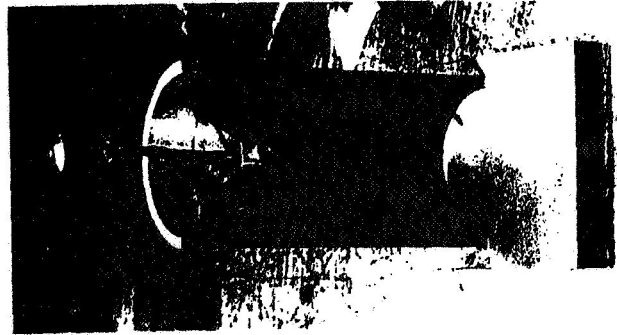
ARC MELT

COMBUSTION SYNTHESIS

Los Alamos

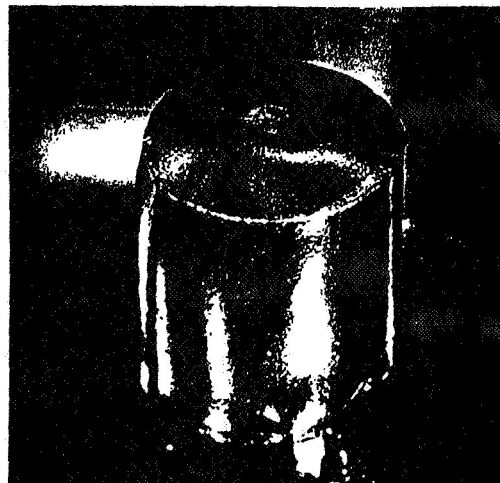


Meltpoint Setup



LOS ALAMOS

Post-Melt Sample



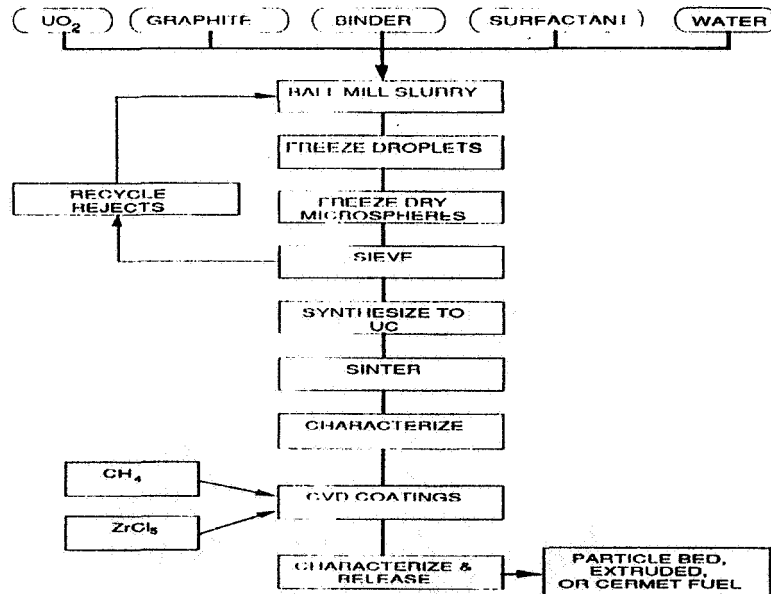
LOS ALAMOS

## MEASURED MELT POINT COMPARISON

<u>Composition</u>	<u>Observed Melt Pt., K</u>	<u>Literature Value, K</u>	<u>Variance, K</u>
UC <sub>1.0</sub>	2806	2793	+13
UC <sub>1.4</sub>	2633	2673	-40
U <sub>4</sub> Zr <sub>6</sub> C <sub>1.2</sub>	2683	2673	+10
U <sub>4</sub> Zr <sub>6</sub> C <sub>1.2</sub>	2655	2673	-18

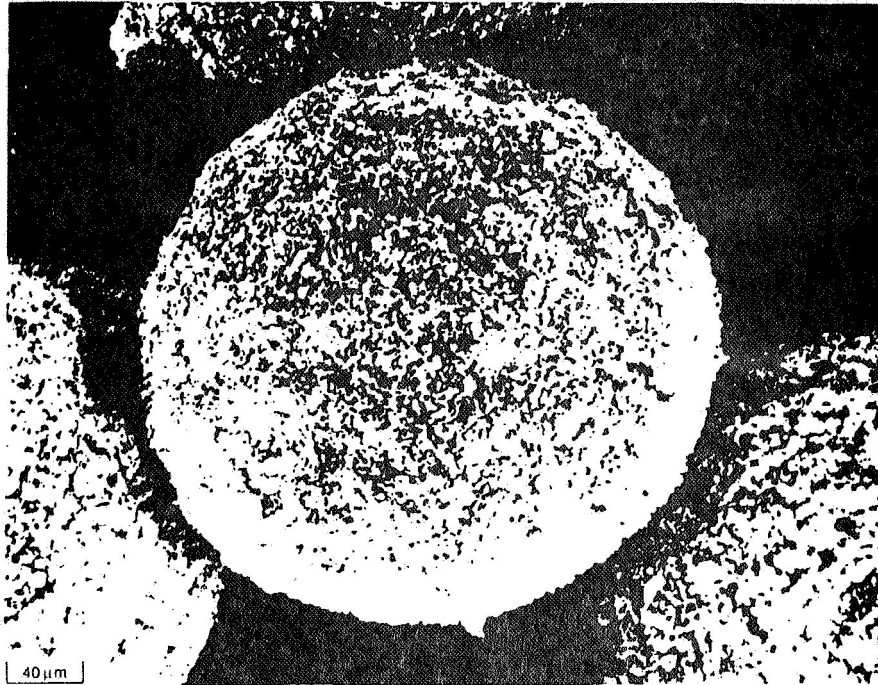
Los Alamos

## CRYOCHEMICAL FUEL PROCESSING



Los Alamos

UO<sub>2</sub> + C MICROSPHERE AFTER FREEZE DRYING ≈500X



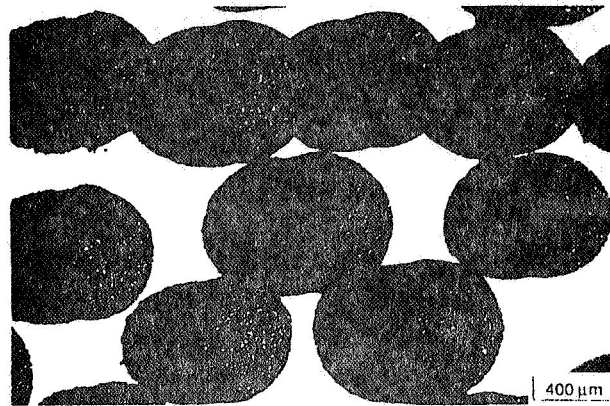
Los Alamos

SINTERED UC<sub>2</sub> MICROSPHERES



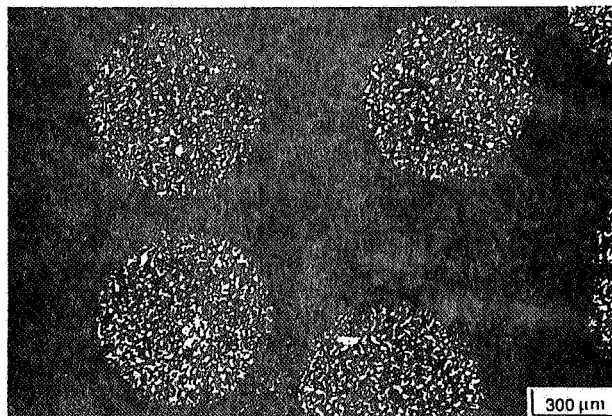
Los Alamos

SINTERED  $(U_{0.1}Zr_{0.9})C$  MICROSPHERES



LOS ALAMOS

CROSS-SECTION OF SINTERED  
MIXED CARBIDE MICROSPHERES



LOS ALAMOS

## **CRYOCHEMICAL SPHERE FORMING ADVANTAGES**

- **Process is composed of a few simple steps**
- **Applicable to a variety of nuclear fuel concepts**
- **Porosity is likely a controllable variable**
- **Spheres >1000  $\mu\text{m}$  diameter appear possible**
- **Rejected spheres are easily reused**
- **Re-using process fluids minimizes wastes**

Alamos