

NASA/TM—2000-209928



# 600 °C Logic Gates Using Silicon Carbide JFET's

Philip G. Neudeck and Glenn M. Beheim  
Glenn Research Center, Cleveland, Ohio

Carl S. Salupo  
Cortez III Service Corporation, Cleveland, Ohio

## The NASA STI Program Office . . . in Profile

Since its founding, NASA has been dedicated to the advancement of aeronautics and space science. The NASA Scientific and Technical Information (STI) Program Office plays a key part in helping NASA maintain this important role.

The NASA STI Program Office is operated by Langley Research Center, the Lead Center for NASA's scientific and technical information. The NASA STI Program Office provides access to the NASA STI Database, the largest collection of aeronautical and space science STI in the world. The Program Office is also NASA's institutional mechanism for disseminating the results of its research and development activities. These results are published by NASA in the NASA STI Report Series, which includes the following report types:

- **TECHNICAL PUBLICATION.** Reports of completed research or a major significant phase of research that present the results of NASA programs and include extensive data or theoretical analysis. Includes compilations of significant scientific and technical data and information deemed to be of continuing reference value. NASA's counterpart of peer-reviewed formal professional papers but has less stringent limitations on manuscript length and extent of graphic presentations.
- **TECHNICAL MEMORANDUM.** Scientific and technical findings that are preliminary or of specialized interest, e.g., quick release reports, working papers, and bibliographies that contain minimal annotation. Does not contain extensive analysis.
- **CONTRACTOR REPORT.** Scientific and technical findings by NASA-sponsored contractors and grantees.

- **CONFERENCE PUBLICATION.** Collected papers from scientific and technical conferences, symposia, seminars, or other meetings sponsored or cosponsored by NASA.
- **SPECIAL PUBLICATION.** Scientific, technical, or historical information from NASA programs, projects, and missions, often concerned with subjects having substantial public interest.
- **TECHNICAL TRANSLATION.** English-language translations of foreign scientific and technical material pertinent to NASA's mission.

Specialized services that complement the STI Program Office's diverse offerings include creating custom thesauri, building customized data bases, organizing and publishing research results . . . even providing videos.

For more information about the NASA STI Program Office, see the following:

- Access the NASA STI Program Home Page at <http://www.sti.nasa.gov>
- E-mail your question via the Internet to [help@sti.nasa.gov](mailto:help@sti.nasa.gov)
- Fax your question to the NASA Access Help Desk at (301) 621-0134
- Telephone the NASA Access Help Desk at (301) 621-0390
- Write to:  
NASA Access Help Desk  
NASA Center for AeroSpace Information  
7121 Standard Drive  
Hanover, MD 21076

NASA/TM—2000-209928



# 600 °C Logic Gates Using Silicon Carbide JFET's

Philip G. Neudeck and Glenn M. Beheim  
Glenn Research Center, Cleveland, Ohio

Carl S. Salupo  
Cortez III Service Corporation, Cleveland, Ohio

Prepared for the  
Government Microcircuit Applications Conference  
cosponsored by DoD, NASA, DoC, DoE, NSA, and CIA  
Anaheim, California, March 20–24, 2000

National Aeronautics and  
Space Administration

Glenn Research Center

---

March 2000

## Acknowledgments

The authors would like to gratefully acknowledge the tireless efforts of David Larkin, Luann Keys, and Andrew Trunek in wafer preparation and epitaxial growth that made this work possible. This work was carried out at NASA Glenn under internal funding from the High Temperature Enabling Materials for Propulsion (HITEMP) program.

Available from

NASA Center for Aerospace Information  
7121 Standard Drive  
Hanover, MD 21076  
Price Code: A02

National Technical Information Service  
5285 Port Royal Road  
Springfield, VA 22100  
Price Code: A02

# 600 °C Logic Gates Using Silicon Carbide JFET's

Philip G. Neudeck\* and Glenn M. Beheim  
National Aeronautics and Space Administration  
Glenn Research Center  
Cleveland, Ohio 44135

\*Phone: (216) 433-8902, E-mail: neudeck@grc.nasa.gov

Carl S. Salupo  
Cortez III Service Corporation  
Cleveland, Ohio 44135

## Introduction

Complex electronics and sensors are increasingly being relied on to enhance the capabilities and efficiency of modern jet aircraft. Some of these electronics and sensors monitor and control vital engine components and aerosurfaces that operate at high temperatures above 300 °C. However, since today's silicon-based electronics technology cannot function at such high temperatures, these electronics must reside in environmentally controlled areas. This necessitates either the use of long wire runs between sheltered electronics and hot-area sensors and controls, or the fuel cooling of electronics and sensors located in high-temperature areas. Both of these low-temperature-electronics approaches suffer from serious drawbacks in terms of increased weight, decreased fuel efficiency, and reduction of aircraft reliability. A family of high-temperature electronics and sensors that could function in hot areas would enable substantial aircraft performance gains. Especially since, in the future, some turbine-engine electronics may need to function at temperatures as high as 600 °C.

This paper reports the fabrication and demonstration of the first semiconductor digital logic gates ever to function at 600 °C. Key obstacles blocking the realization of useful 600 °C turbine engine integrated sensor and control electronics are outlined.

## Technology Selection

Silicon carbide (SiC) presently appears to be the strongest candidate semiconductor for implementing 500–600 °C integrated electronics in the nearer term, as competing high temperature electronics technologies are either physically incapable of functioning at this high of a temperature range (silicon and silicon-on-insulator), or are significantly less-developed (GaN, diamond, etc.) than silicon carbide. Discrete silicon carbide devices such as pn junction diodes, junction field

effect transistors (JFET's), and metal-oxide-semiconductor field effect transistors (MOSFET's) have previously demonstrated excellent electrical functionality at 600 °C for relatively short time periods [1]. However, for such electronics to be useful in crucial turbine-engine applications, much longer 600 °C harsh-environment lifetimes must eventually be realized. Between 500 to 5000 hours of operation is needed for various jet engine ground tests, while many years of reliable operation is required for insertion into everyday passenger aircraft.

The operational lifetime of SiC-based transistors at 600 °C is not limited by the semiconductor itself, but is instead largely governed by the reliability and stability of various interfaces with the SiC crystal surface. The physical degradation of the metal-semiconductor ohmic contact interface limits the 600 °C operating lifetime of all devices, while high temperature MOSFET operating lifetime is also limited by the electrical integrity of the oxide-semiconductor. While silicon electronics experience clearly demonstrates that complementary MOSFET (CMOS) technology is desired for implementing integrated circuits, development of the necessary high electrical quality gate-insulators capable of long-term 600 °C operation will likely prove elusive for many years to come [2]. Thus, junction-based transistors without gate insulators appear more feasible in the nearer term, especially given recent progress toward improving the 600 °C high temperature durability of SiC ohmic contacts [3]. Of the candidate junction-based transistor technologies that might be used to implement SiC integrated circuits, the pn junction gate JFET seems closest to demonstrating long-term operation at 600 °C. Prototype SiC bipolar transistors demonstrated to date have exhibited low current gains insufficient for practical use in complex integrated circuits, while the Schottky barrier gates employed in SiC metal-semiconductor field effect transistors (MESFET's) allow too much undesired gate-to-channel leakage at 600 °C [4].

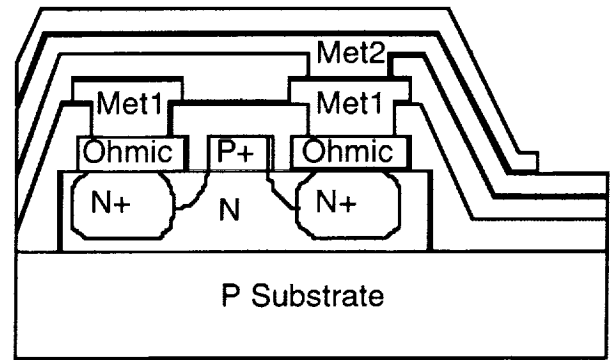
The basic current-voltage properties of SiC JFET's at 600 °C are qualitatively similar to room temperature GaAs MESFET's employed in high-speed digital IC's. Therefore, a resistive load direct-coupled FET logic (DCFL) approach, with some obvious parallels to high-yield GaAs DCFL, was adopted to demonstrate simple 600 °C digital logic using SiC JFET's. A simple inverter logic gate merely requires a near-zero threshold voltage FET coupled to a resistor.

The non-planar epitaxial gate JFET design shown in Figure 1 was adopted in favor of a planar ion-implanted structure, largely to alleviate the challenging process of sufficiently activating high-dose p<sup>+</sup> ion implants in SiC. The two-level interconnect approach uses oxidation-resistant silicon nitride as the dielectric passivant along with oxidation resistant gold for the metal interconnect. Contrary to the depiction of Figure 1, the devices are laid out so that both the second and third layers of silicon nitride always covered the first via layer to the oxygen-sensitive metal-SiC ohmic contact interface. However, because non-optimized ohmic contact metals were employed in this experiment, long term 600 °C operation was not obtained.

### **Fabrication Process**

The mesa-isolated epitaxial channel JFET structure shown in Figure 1 was grown (starting from an off-axis commercial p-type 6H-SiC substrate [5]) at the NASA Glenn Research Center using the epitaxial growth system described in [6]. Proper application of site-competition dopant control principles was key to successfully realizing this device structure [7]. An underlying p<sup>-</sup> buffer epilayer around 12 microns thick and doped p-type below  $5 \times 10^{15} \text{ cm}^{-3}$  is not depicted in Figure 1. A 0.5–0.7 μm n-channel layer doped around  $1 \times 10^{16} \text{ cm}^{-3}$  was grown to obtain threshold voltages acceptably close to zero over the temperature range of interest. The thin p<sup>+</sup> gate epilayer (0.1–0.2 μm,  $N_A > 10^{20} \text{ cm}^{-3}$ ) must be as degenerately doped as possible, to assure sufficient electrical contact to the gate layer as well as adequate conductivity through long narrow gate fingers with no metal directly on top. Site-competition enables all the key n-type and p-type layers to be grown within a single continuous run that minimizes undesired contamination and dopant spikes that can arise from growth interruption and re-initiation [8]. It also enables better immunity to epi-reactor impurities that can harm reproducibility as the reactor components, especially the sample-holding susceptor, can degrade from one growth run to the next.

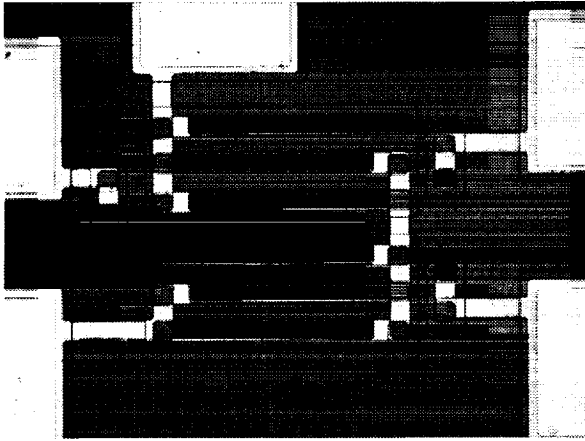
Following epitaxial growth, an aluminum p<sup>+</sup> gate pattern etch mask is defined and patterned by liftoff.



**Figure 1:** Simplified (see text) cross-sectional representation of 6H-SiC epitaxial JFET's used to implement 600 °C logic gates. The shaded regions are insulating silicon nitride dielectric.

A reactive ion etch (RIE) in 14 CHF<sub>3</sub> : 10 O<sub>2</sub> 400 W plasma removes the p<sup>+</sup> epilayer from unmasked areas to expose the n-channel layer. Without removing the first gate etch mask, a second aluminum etch mask defining mesas for the active n-channel areas is deposited and liftoff patterned. A second RIE to a depth of approximately 0.7 μm is then carried out to isolate each device. Both aluminum etch masks are then stripped with a wet etch.

In preparation for ion implantation, approximately 0.1 μm of silicon is E-beam deposited over the entire wafer. Then, a 0.8 μm layer of silicon is liftoff patterned to delineate areas for high dose nitrogen source/drain implants to facilitate ohmic contacts to the n-channel layer. The wafers are then sent to a commercial vendor [9] for 600 °C nitrogen implantation of a box profile using  $1.4 \times 10^{15}$ ,  $7 \times 10^{14}$ , and  $3.6 \times 10^{14} \text{ cm}^{-2}$  doses at 80, 40, and 20 keV energies, respectively. Following ion implantation the silicon mask layers are chemically stripped in 1 HF : 1 HNO<sub>3</sub>. The same basic implant process is then repeated to carry out lighter-dose nitrogen implant ( $3.2 \times 10^{12}$ ,  $8 \times 10^{11}$ ,  $1.2 \times 10^{12}$ , and  $1 \times 10^{12} \text{ cm}^{-2}$  dose at 33, 24, 18, and 10 keV, respectively) that self-aligns with the etched p<sup>+</sup> gate as shown in Figure 1. This second implant prevents complete pinchoff of the n-layer resistors by the sub-channel and surface depletion regions and increases transistor source-to-gate and gate-to-drain conductance. After implant mask stripping and solvent/acid wafer cleaning, the nitrogen implants are electrically activated by placing the wafer into a closed SiC crucible (made from SiC wafer pieces) and annealing at 1400 °C for 30 minutes in an argon atmosphere tube furnace. The wafer is again cleaned with acids to remove any residual oxides that might have formed during the implant anneal.



**Figure 2:** Optical micrograph of 6H-SiC JFET NAND gate prior to 600 °C testing. The logical output is the bottom left bondpad, while the input pads are along the right side. The positive ( $V_{DD}$ ) and negative ( $V_{SS}$ ) power supply pads are on the top left and top middle, respectively. Each bondpad is 100×100  $\mu\text{m}$ , and each of the four gate fingers is 3×150  $\mu\text{m}$ .

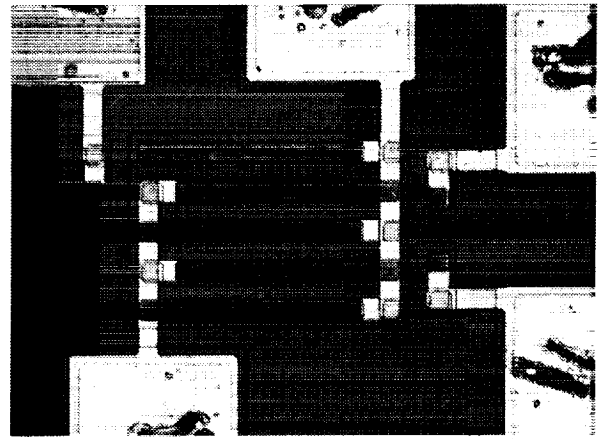
A 0.3  $\mu\text{m}$  thick layer of gold (E-beam deposited, patterned by liftoff) formed the contacts to both the  $n^+$  source/drain implant regions as well as the  $p^+$  gates. At this stage of the process, the basic electrical functionality of the JFET's and resistors was verified at room temperature on a probing station.

A first layer of silicon nitride passivation was sputter deposited to a thickness of around 0.3–0.4  $\mu\text{m}$ . The deposition of this layer was broken into two segments to minimize chances of undesired pinhole defects spanning the complete thickness of the layer. Patterned vias through the first nitride layer was then dry etched in a 5  $\text{CHF}_3$  : 0.4  $\text{O}_2$  150 W plasma using photoresist as the etch mask. 0.3  $\mu\text{m}$  thick gold interconnects were then liftoff patterned on top of the nitride. The same basic nitride/via/metal process was then repeated for a second level of gold interconnect. A third and final nitride deposition and bondpad via etch completed the circuit fabrication process. The completed NAND and NOR gates are shown in the optical micrographs of Figures 2 and 3.

### Electrical Testing

All circuit testing was carried out in air under low-light conditions using a probing station with the sample sitting on a customized temperature-controlled heating element. Gold-coated tungsten probe tips were employed to minimize probe degradation by oxidation during high temperature testing.

Figures 4 and 5 show the functional waveforms collected from the NAND and NOR gates at 300 °C, respectively. Figures 6 and 7 show operation of the

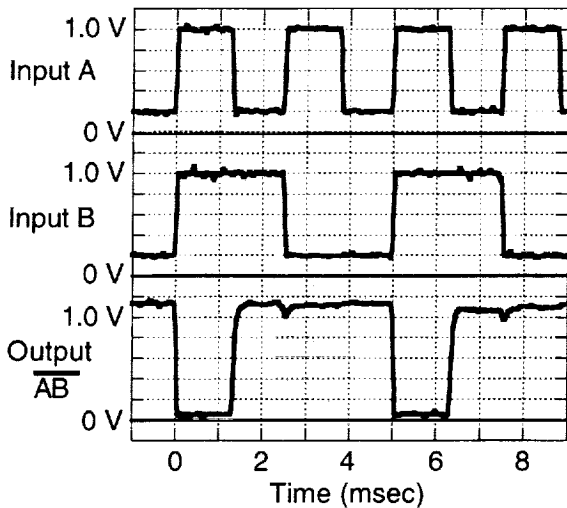


**Figure 3:** Optical micrograph of 6H-SiC JFET NOR gate following 600 °C electrical testing. The bottom left bondpad is the output, while the input pads are along the right side. The positive ( $V_{DD}$ ) and negative ( $V_{SS}$ ) power supply pads are on the top left and middle. Each bondpad is 100×100  $\mu\text{m}$ , and each of the four gate fingers is 3×150  $\mu\text{m}$ .

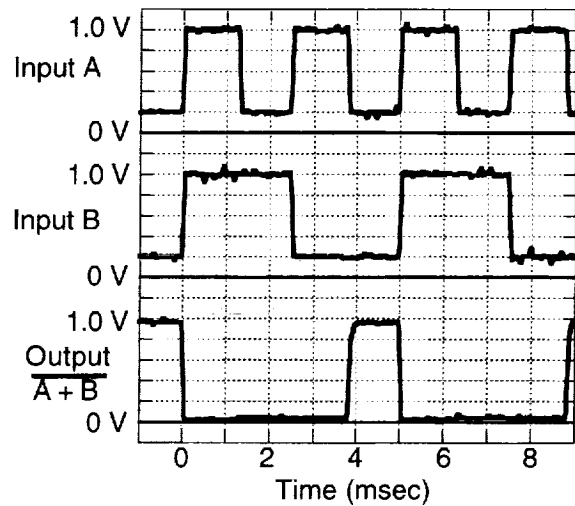
same gates at 600 °C. As indicated by the supply voltages given in each figure caption, adjustment of the substrate bias ( $V_{\text{substrate}}$ ) and power supply bias ( $V_{DD}$ ) was necessary to compensate for current-voltage property changes with temperature, as the circuit noise margins were not sufficient to absorb these changes while maintaining basic functionality. Therefore, these circuits are not capable of operation over the desired 25 °C to 600 °C temperature range using fixed power supply voltages. High temperature degradation of both the probe-tips and the ohmic contacts limited operational circuit testing at 600 °C to less than one hour. The Figure 3 device picture taken following 600 °C testing shows visible evidence of contact degradation compared to the Figure 2 device photo taken prior to high temperature testing.

### Discussion

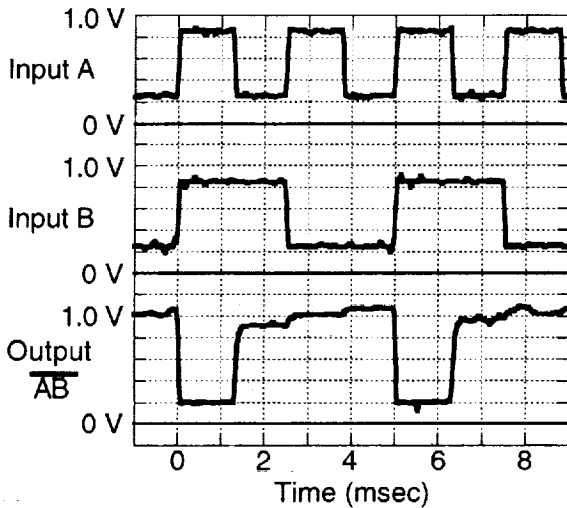
While the work described here does represent a first for high temperature integrated circuit operation, it also illustrates areas where additional technology development is necessary before 600 °C SiC-based circuits can become useful. The operational lifetime of the circuit at 600 °C could be extended by using separately optimized n-type and p-type ohmic contacts specifically designed to resist high-temperature degradation. However, it will be difficult to measure this improvement on a probing station where the probe tips themselves are degrading. Therefore, the parallel development of 500–600 °C packaging is very important to further development of the chip-level technology. The ability to thermally cycle packaged devices under electrical bias would also aid the observation of longer term electrical



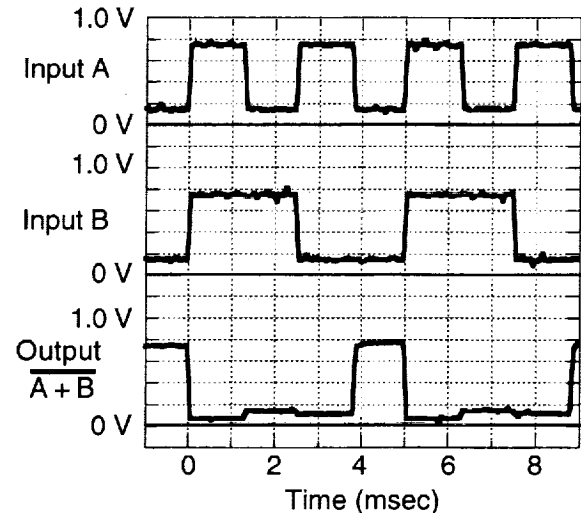
**Figure 4:** NAND gate test waveforms at 300 °C with  $V_{DD} = 2.1$  V,  $V_{SS} = 0$  V,  $V_{substrate} = 0$  V.



**Figure 5:** NOR gate test waveforms at 300 °C with  $V_{DD} = 3.5$  V,  $V_{SS} = 0$  V,  $V_{substrate} = 0$  V.



**Figure 6:** NAND gate test waveforms at 600 °C with  $V_{DD} = 2.5$  V,  $V_{SS} = 0$  V,  $V_{substrate} = -1.4$  V.



**Figure 7:** NOR gate test waveforms at 600 °C with  $V_{DD} = 3.5$  V,  $V_{SS} = 0$  V,  $V_{substrate} = -1.8$  V.

instabilities like those shown to limit the operating lifetime and usefulness of 300 °C operational amplifier circuits based on SiC doped-channel MOSFET's [10]. Effective elimination of such instabilities, if present in integrated circuit compatible SiC JFET's, will be necessary before 500–600 °C integrated circuits implemented in this technology can become useful.

### References

- [1] P.G. Neudeck, to appear in VLSI Technology, CRC Press (2000).
- [2] M. Maranowski and J.A. Cooper, IEEE Trans. Electron Devices **46** p. 520 (1999).
- [3] R.S. Okojie et al., IEEE Trans. Electron Devices **46** p. 269 (1999).
- [4] J.W. Palmour et al., Physica B **185** p. 461 (1993).
- [5] Cree Research, Durham, NC.
- [6] J.A. Powell et al., J. Electronic Materials **24** p. 295 (1995).
- [7] D.J. Larkin, Phys. Stat. Sol. (b) **202**, p. 305 (1997).
- [8] A.A. Burk, Jr. and L.B. Rowland, Appl. Phys. Lett. **68** p. 382 (1996).
- [9] Implant Sciences Corporation, Wakefield, MA.
- [10] D.M. Brown et al., Phys. Stat. Sol. (a) **162** p. 459 (1997).





# REPORT DOCUMENTATION PAGE

*Form Approved*  
OMB No. 0704-0188

Public reporting burden for this collection of information is estimated to average 1 hour per response, including the time for reviewing instructions, searching existing data sources, gathering and maintaining the data needed, and completing and reviewing the collection of information. Send comments regarding this burden estimate or any other aspect of this collection of information, including suggestions for reducing this burden, to Washington Headquarters Services, Directorate for Information Operations and Reports, 1215 Jefferson Davis Highway, Suite 1204, Arlington, VA 22202-4302, and to the Office of Management and Budget, Paperwork Reduction Project (0704-0188), Washington, DC 20503.

<b>1. AGENCY USE ONLY</b> ( <i>Leave blank</i> )		<b>2. REPORT DATE</b> March 2000	<b>3. REPORT TYPE AND DATES COVERED</b> Technical Memorandum	
<b>4. TITLE AND SUBTITLE</b>  600 °C Logic Gates Using Silicon Carbide JFET's			<b>5. FUNDING NUMBERS</b>  WU-519-20-53-00	
<b>6. AUTHOR(S)</b>  Philip G. Neudeck, Glenn M. Beheim, and Carl S. Salupo				
<b>7. PERFORMING ORGANIZATION NAME(S) AND ADDRESS(ES)</b>  National Aeronautics and Space Administration John H. Glenn Research Center at Lewis Field Cleveland, Ohio 44135-3191			<b>8. PERFORMING ORGANIZATION REPORT NUMBER</b>  E-12172	
<b>9. SPONSORING/MONITORING AGENCY NAME(S) AND ADDRESS(ES)</b>  National Aeronautics and Space Administration Washington, DC 20546-0001			<b>10. SPONSORING/MONITORING AGENCY REPORT NUMBER</b>  NASA TM-2000-209928	
<b>11. SUPPLEMENTARY NOTES</b> Prepared for the Government Microcircuit Applications Conference cosponsored by DoD, NASA, DoC, DoE, NSA, and CIA, Anaheim, California, March 20-24, 2000. Philip G. Neudeck and Glenn M. Beheim, NASA Glenn Research Center; and Carl S. Salupo, Cortez III Service Corporation, 21000 Brookpark Road, Cleveland, Ohio 44142 (currently with InDyne, Inc., 21000 Brookpark Rd., Cleveland, Ohio 44142). Responsible person, Philip G. Neudeck, organization code 5510, (216) 433-8902.				
<b>12a. DISTRIBUTION/AVAILABILITY STATEMENT</b>  Unclassified - Unlimited Subject Category: 33  This publication is available from the NASA Center for AeroSpace Information, (301) 621-0390.			<b>12b. DISTRIBUTION CODE</b>  Distribution: Nonstandard	
<b>13. ABSTRACT</b> ( <i>Maximum 200 words</i> )  Complex electronics and sensors are increasingly being relied on to enhance the capabilities and efficiency of modern jet aircraft. Some of these electronics and sensors monitor and control vital engine components and aerosurfaces that operate at high temperatures above 300 °C. However, since today's silicon-based electronics technology cannot function at such high temperatures, these electronics must reside in environmentally controlled areas. This necessitates either the use of long wire runs between sheltered electronics and hot-area sensors and controls, or the fuel cooling of electronics and sensors located in high-temperature areas. Both of these low-temperature-electronics approaches suffer from serious drawbacks in terms of increased weight, decreased fuel efficiency, and reduction of aircraft reliability. A family of high-temperature electronics and sensors that could function in hot areas would enable substantial aircraft performance gains. Especially since, in the future, some turbine-engine electronics may need to function at temperatures as high as 600 °C. This paper reports the fabrication and demonstration of the first semiconductor digital logic gates ever to function at 600 °C. Key obstacles blocking the realization of useful 600 °C turbine engine integrated sensor and control electronics are outlined.				
<b>14. SUBJECT TERMS</b>  Silicon carbide; Field effect transistors; JFET; Transistor circuits			<b>15. NUMBER OF PAGES</b> 10	
			<b>16. PRICE CODE</b> A02	
<b>17. SECURITY CLASSIFICATION OF REPORT</b> Unclassified	<b>18. SECURITY CLASSIFICATION OF THIS PAGE</b> Unclassified	<b>19. SECURITY CLASSIFICATION OF ABSTRACT</b> Unclassified	<b>20. LIMITATION OF ABSTRACT</b>	