

Composite Overwrapped Pressure Vessels (COPV): Flight Rationale for the Space Shuttle Program

Michael T. Kezirian¹

The Boeing Company, Houston, TX 77059 USA

Kevin L. Johnson²

Georgia Institute of Technology, Athens, GA 30602 USA

and

Stuart L. Phoenix³

Cornell University, Ithaca, NY, 1485, USA

Each Orbiter Vehicle (Space Shuttle Program) contains up to 24 Kevlar49/Epoxy Composite Overwrapped Pressure Vessels (COPV) for storage of pressurized gasses. In the wake of the *Columbia* accident and the ensuing Return To Flight (RTF) activities, Orbiter engineers reexamined COPV flight certification. The original COPV design calculations were updated to include recently declassified Kevlar COPV test data from Lawrence Livermore National Laboratory (LLNL) and to incorporate changes in how the Space Shuttle was operated as opposed to originally envisioned. 2005 estimates for the probability of a catastrophic failure over the life of the program (from STS-1 through STS-107) were one-in-five. To address this unacceptable risk, the Orbiter Project Office (OPO) initiated a comprehensive investigation to understand and mitigate this risk. First, the team considered and eventually deemed unfeasible procuring and replacing all existing flight COPVs. OPO replaced the two vessels with the highest risk with existing flight spare units. Second, OPO instituted operational improvements in ground procedures to significantly reduce risk, without adversely affecting Shuttle capability. Third, OPO developed a comprehensive model to quantify the likelihood of occurrence. A fully-instrumented burst test (recording a lower burst pressure than expected) on a flight-certified vessel provided critical understanding of the behavior of Orbiter COPVs. A more accurate model was based on a newly-compiled comprehensive database of Kevlar data from LLNL and elsewhere. Considering hardware changes, operational improvements and reliability model refinements, the mean reliability was determined to be 0.998 for the remainder of the Shuttle Program (from 2007, for STS-118 thru STS-135). Since limited hardware resources precluded full model validation through multiple tests, additional model confidence was sought through the first-ever Accelerated Stress Rupture Test (ASRT) of a flown flight article. A Bayesian statistical approach was developed to interpret possible test results. Since the lifetime observed in the ASRT exceeded initial estimates by one to two orders of magnitude, the Space Shuttle Program deemed there was significant conservatism in the model and accepted continued operation with existing flight hardware. Given the variability in tank-to-tank original proof-test response, a non-destructive evaluation (NDE) technique utilizing Raman Spectroscopy was developed to directly measure COPV residual stress state. Preliminary results showed that patterns of low fiber elastic strains over the outside vessel surface, together with measured permanent volume growth during proof, could be directly correlated to increased fiber stress ratios on the inside fibers adjacent to the liner, and thus reduced reliability. Associated with this volumetric response, thought tied to void compaction, was the discovery, though laser profilometry inspection of the interior of several flight COPVs, of

¹ Engineer, Orbiter (Space Shuttle), System Safety, and Adjunct Associate Professor, Department of Astronautical Engineering, University of Southern California, Los Angeles, CA 90089, USA, and AIAA Associate Fellow.

² Graduate Student, Department of Mechanical and Aerospace Engineering, and AIAA Student Member.

³ Professor, Department of Mechanical and Aerospace Engineering.

deep (up to 20 mil) depressions in the liner exterior. A comprehensive analysis was performed, which showed that these observed depressions were significantly less than the threshold established as a high-risk criterion for liner buckling.

Nomenclature

p_o	=	reference pressure at T=300K
p_{op}	=	operating pressure
p_{mop}	=	maximum operating pressure
t	=	clock time
t_{eff}	=	effective time
T	=	temperature
T_{op}	=	operating temperature
T_{ref}	=	reference temperature
ρ_{ref}	=	power-law exponent for lifetime in terms of fiber stress ratio

I. Introduction

The Columbia Accident Investigation Report² addressed the Culture of Safety which existed at NASA. *“Organizations that deal with high-risk operations must always have a healthy fear of failure – operations must be proved safe, rather than the other way around. NASA inverted this burden of proof.”* A change in philosophy was mandated: the design and its operations must be proven to be safe. Prior to the *Columbia* accident, it might have been easy to disregard a safety concern or dismiss a problem in favor of what engineers thought or felt was acceptable to fly. The new culture of safety required that adverse data be properly scrutinized and that flight rationale based on sound data be developed.

In this respect the recent Kevlar-Composite Overwrapped Pressure Vessel (COPV) Investigation represents a NASA success. The inter-disciplinary team with experts from industry, academia and civil service, from multiple NASA centers and from National Laboratories worked together to resolve a complex technical problem. The resulting flight rationale and continued flight decisions were based on data and analysis. It is also noted that the knowledge developed for the Space Shuttle Program has been propagated to successive NASA programs and more broadly benefitted the COPV industry.

A. Motivation for Composite Tanks

Introducing Kevlar-COPVs into the human spaceflight program represented a significant technical achievement for the Space Shuttle Program. Each Orbiter vehicle contains 24 Kevlar-COPVs for pressurized helium (for propulsion) and nitrogen (for life support) at pressures up to 5,000 psi. Incorporating COPVs instead of traditional all-metal tanks reduced the Orbiter weight 752 pounds. This weight reduction is noteworthy in light of the total Orbiter dry weight (176,419 pounds, for *Atlantis*). However, the 752 pounds is considerable relative to the Space Shuttle payload capability. The Space Shuttle can deliver 36,300 pounds to a 51.6° inclination orbit (as would be to the International Space Station) or 54,200 pounds to a 28.5° inclination orbit.

B. Original Design Considerations

A COPV consists of two parts; a metallic liner and a composite overwrap. On the Shuttle, the metallic liners were spherical shells made of titanium at a nominal (0.104”) thickness. The overwrap was Kevlar-49 fiber in an epoxy matrix of nominally 0.739” thickness. The primary purpose of the liner is to contain the gas within the relatively permeable Kevlar overwrap, however, the liner did carry 20-30% of the total load of the pressurized gas. The remainder was carried by the overwrap.

During initial Program development, engineers considered all credible failure modes and mitigated risk through design. Early on, the primary failure mode of the vessel was considered to be fatigue of the liner, either in the parent material or in the welds. The design requirement for the liner was Leak Before Burst (LBB). By definition, LBB requires that material defects or fatigue cracks in the liner to manifest themselves in such a way that if a crack grows and penetrates through the liner it would continue growing slowly enough for the gas to slowly escape. This mechanism precludes a burst from a stress concentration of unzipping (liners were not bonded to the overwrap) and the sudden release of the stored energy in the compressed gas. The Space Shuttle Program underwent an exhaustive test program to validate this failure mechanism. Twenty tanks were experimentally cycled in fatigue to confirm this

concept. It is noted, however, that compressive (buckling) failures were occasionally observed. The circumstances that led to that failure mechanism were felt not to represent flight conditions.

Failure of the overwrap by stress-rupture was initially presumed to be non-credible, that is, there was believed to be sufficient margin in the overwrap strength to preclude such failure mode.

The original program requirements were for 100 missions in 10 years. The original certification necessitated a 10 year life on the materials (liner and overwrap); and for cyclic fatigue concerns, the vessels would need to survive a number of pressure cycles associated with 100 missions. Cycle testing was performed on test articles to show that each vessel liner could survive a factor of 4 on what was anticipated for 100 missions. Upon retirement, the most flown Orbiter, *Discovery*, had completed 39 flights. The OMS pods have been interchanged throughout the program for various propulsion issues. The left pod (LP01) of *Discovery* was the fleet leader, with its 42nd flight on STS-133. The corresponding 40" tank (SN015) was also the fleet leader with respect to effective hours.

C. Initial Safety Concerns

As part of the Return To Flight (RTF) Activities following the *Columbia* accident, the NASA Engineering and Safety Center (NESC) established an investigation team, in February, 2004, at the request of the Space Shuttle Orbiter Project Office (OPO). On February 26, 2004, the NESC Review Board accepted this task and assigned Assessment 04-016-E. Former astronaut Kenneth D. Cameron headed up team of experts from the NESC Structures, Materials and Non-Destructive Evaluation (NDE) Technical Discipline Teams (TDT), and external, world-renown COPV Experts.

The NESC Assessment Team gathered and built a comprehensive database incorporating Lawrence Livermore National Laboratory (LLNL) stress-rupture data on small Kevlar/epoxy test vessels and strands, Dupont/DOE replicates of LLNL Laboratory tanks, and Cornell University single-fiber test data. This Assessment Team developed mechanics and reliability models to accommodate the typical pressure and temperature fluctuations observed in the Shuttle Flight Data. The team issued the following preliminary findings⁷: 1) Kevlar/Epoxy (K/E) COPV are susceptible to the stress-rupture failure mode that can result in an explosive release of stored energy, 2) Risk is a strong function of fiber stress level, time at pressure (adjusted for temperature), 3) Likelihood of stress rupture failure in Orbiter COPV is significantly higher than previous predictions, and 4) Reliability models and supporting database need to be updated to reflect new knowledge as it is gained.

Included among their findings was: 1) Stress Ratios for Orbiter COPVs should be based on actual measured burst strengths of specific tanks (OMS, RCS, MPS) not on design values from test coupons or 10-inch rubber-lined vessels ('Lincoln 9'). It was noted that significant size effect exists, i.e., apparent fiber failure strength is lower for small COPVs compared to epoxy-impregnated tows and still lower for larger COPVs – OMS and RCS vessels, and even lower than expected based on scaling from 26" MPS tanks (which were actually designed to a lower burst pressure).

Revised Stress Ratios for OMS, RCS and 40" MPS tanks now become higher than used for original fleet leaders. This was of critical importance as the enveloping logic of JSC fleet leaders was no longer applicable.

Table 1. Measured Burst Pressures of Orbiter COPVs.

	26" Tanks	40" Tanks
Burst Pressures (psia)	8,890 (SN-003)	8,010 (SN-002)
	9,020 (SN-004)	7,667 (SN-011)
	9,570 (SN-001Q)	
Fiber Stress Ratio (SR)	47%	OMS 4875 psi SR = 64%
		MPS 4500 psi SR = 53%

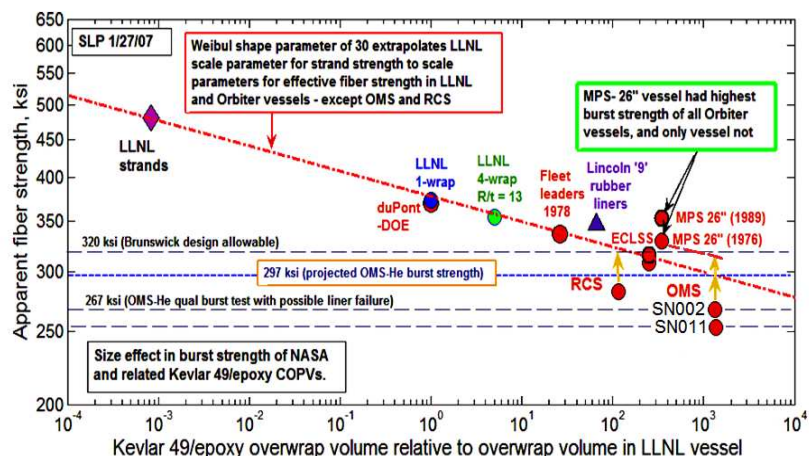


Figure 1. Size Effect of Orbiter Tanks. Fiber strength scales with overwrap volume and shows anomalies for the largest tanks.

D. Orbiter Vessel Scaling: Importance of Size Effect

The Orbiter vessels were built with a similar design and it would be expected that they would scale with one another. The measured burst strengths of certain Orbiter Vessels are presented in Table 1. For vessels that were similarly scaled, it would be expected that the measured burst strengths would be comparable to one another after accounting for the total volume of overwrap under stress. In fact, based on the two tanks that were tested the largest 40" tanks had a considerably lower burst strength than predicted (as did the smaller RCS tanks). Thus, as vessels for use as either OMS or MPS tanks, their corresponding fiber stress ratios were significantly higher than as designed. If delivered fiber strength is 318 ksi (suggested by extrapolation of MPS 26 inch vessels) vs 253 ksi (suggested by SN011), then stress ratio would be reduced by factor of 1.26 and lifetime is increased by factor of $(1.26)^{24} = 242$. This became a significant concern for the Orbiter fleet. In Figure 1, the scaling of apparent fiber strength with respect to relative overwrap volume more acutely illustrates the scaling effect. Given the measured values fall below this universal relation, the life of these tanks is considerably lower than originally anticipated.

E. NESC Key Findings

On April 12, 2007, NESC Assessment Team issued their final report⁷ with the following key observations and final recommendations on COPV Reliability Calculations. The NESC team developed new methodology to derive an effective time at maximum operating pressure (MOP), based on the actual time, temperature and pressure history of each Orbiter COPV. The methodology is based on the cumulative damage concept inherent to all Kevlar stress rupture models and on Arrhenius based interpretation of elevated temperature lifetime data. At ambient temperature three different, independently derived, models produced consistent results, lending credibility to the overall methodology, but only one model was able to accommodate temperature fluctuations, using experimental observations on single fibers and epoxy impregnated tows. While it was not possible with the limited time available, to validate these models by testing, each model incorporated all available data.

The Team provided a reliability estimate to the Orbiter Project Office prior to the STS-114 Flight Readiness Review. For the cumulative risk of the system of 26 Orbiter COPVs, the estimated conditional reliability for the subsequent three flights was determined to be slightly better than 0.999.

The Team also noted that for both the 40-inch OMS and MPS vessels, each vessel must have its stress ratio individually calculated based on acceptance data and subsequent burst test data.

F. Tank Production History

The COPV Team's review of each original 40" tank acceptance data package focused on the delta volume, or the permanent growth in volume during manufacturing. During tank fabrication, following the winding and curing of the composite overwrap, the tank undergoes an initial pressurization up to about 6,500 psi, whereby the Ti-6Al-4V liner plastically deforms so that upon returning to zero pressure the liner is placed in compression close to its compressive yield point. This initial pressure cycle is termed autofrettage (actually the same as the "proof cycle"), and following this cycle the interior liner shows a permanent volume increase, called the delta volume. The tank volume was measured throughout this process, after the liner was welded together, after the tank was wound with overwrap, and a third time after the initial autofrettage pressurization step. The precision of the measurement at the time was thought to be within 0.1% of the total volume which was approximately $30,000 \text{ in}^3$. Permanent growth in tank volume during this process became the key parameter because of its indication of the state of fiber hoop strain adjacent to the liner. Large delta volume growth implies through overwrap thickness void compaction (and perhaps other damage), a high stress gradient through the overwrap, and thus higher stress in fibers next to the liner driving up stress ratio (and correspondingly, a lower fiber stress on the outside).

A comparison of this delta volume growth during autofrettage as a function of the vessel build order in the life of the program (presented in Figure 2) shows some important trends. The delta volume was calculated two different

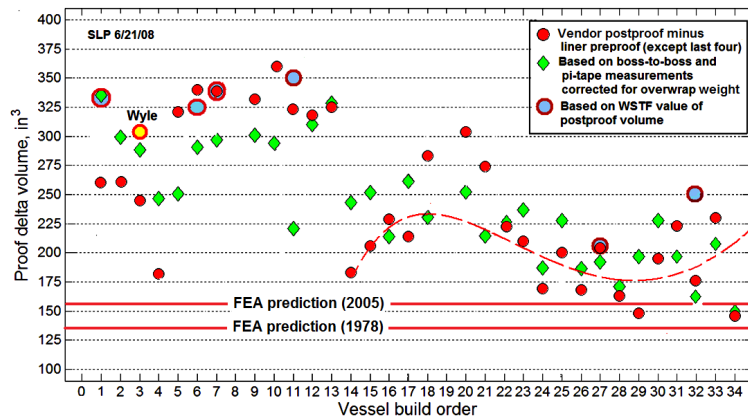
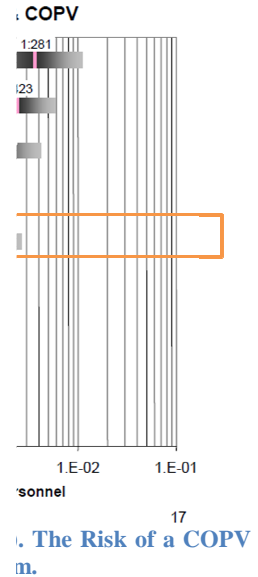


Figure 2. Volume Growth During Autofrettage. As a function of vessel build order, there were strong differences.

ways, first using the vendor measurements of liner volume before and after the autofrettage process and second using measurements of the external tank dimensions and comparing to vendor data taken before the autofrettage process. Select measurements obtained at the White Sands Test Facility (WSTF) are also included in Figure 2.

G. Space Shuttle Program Risk

One way in which the Space Shuttle Program tracks risks is through the Shuttle Integrated Risk Management Application (SIRMA). Risks are reviewed regularly by Shuttle Program management; the risk associated with composite stress rupture became a top Program risk, as shown in Figure 3 and the 5th highest. Here the top risks with their relative uncertainty are presented at the time of the Return to Flight (RTF) in 2005, prior to the launch of STS-114. The top two risks are Micro-Meteoroid Orbital Debris and Ascent Debris, both of which could be catastrophic if such impact damaged the structural integrity of the Orbiter. SSME is a catch-all for risks attributed to the Space Shuttle Main Engine. Similarly RSRB is a catch-all for risks associated with the Reusable Solid Rocket Booster. Crew Error on Entry refers to any number of pilot errors that might have occurred during reentry. Two specific failures of the Auxilliary Power Unit (APU) are of sufficient risk to be included on the list. Number 10 on the list relates to the hold down bolts on the Solid Rocket Booster.



II. Orbiter Engineering Team

Building on the initial groundwork of the NESC Assesment Team, the Orbiter Engineering Team was tasked with three actions: 1) Investigate COPV procurement and replacement, 2) Make improvements to shuttle operations to reduce effective time at pressure and 3) Develop an Orbiter reliability model to quantify future risk based on more recent test data and analysis of past data. These three tasks are detailed below.

It is noted that a companion investigation considered COPV Kevlar overwrap aging¹⁰. During that study performed by the NASA materials group, there was no discernable difference between new fibers or those that had been manufactured thirty years ago. Additionally, specimans from the *Columbia* tanks, which were recovered following the accident, were also analyzed and within the levels of uncertainty involved differences in material mechanical propeties were not evident.

A. Tank Replacement

Orbiter engineers performed a comprehensive analysis to assess the feasibility to replace the exisiting Orbiter vessels. In the life of the Space Shuttle Program, one MPS 40” tank had been replaced (these are accesible), but no certified procedures had been developed for the OMS tanks and the program only had two certified flight spares available. Several scenarios were investigated.

Option 1 was to replace existing tanks with new COPVs. Schedule considerations did not allow time for a new tank to be designed. Option 1A was to procure new tanks to the original specifications. Although the new COPVs would have comparable stress ratios as the original parts, they would not have suffered the previous time under pressure from the first 113 Shuttle flights. Option 1B was to procure new Commercial Off The Shelf (COTS) vessels. The closest COTS equivalent were of cylindral shape (compared to the existing spherical design) and substantially larger. Such replacement would have required a complete redesign of the OMS Pods.

Option 2 was to swap the existing OMS tanks with MPS tanks. However, it was deemed that this option was unacceptable given the minimal improvement to flight risk.

Option 3 considered adding an additional tank or tanks to increase the OMS system volume. This would allow the tanks to be filled to a lower pressure and achieve the same capacity to deliver gas to the OMS liquid propulsion tanks. This was deemed an acceptable approach for the OMS system, although there was significant risk associated with attempting to implement such a scenario.

Option 3 proposed strengthening existing tanks by adding additional layers of overwrap. Such an operation would have required extensive development, analysis and qualification effort, and would risk buckling the liners.

Next, the team investigated replacement procedures. Certified procedures existed for replacement of MPS and ECLSS tanks. The team was tasked with determining feasibility to replace existing OMS/RCS tanks. During original fabrication, the OMS Pods were built around the helium tanks. Replacing this tank required cutting into major structural elements of the Pod and/or cutting through the exterior skin of the Pod, which served as exterior skin of the Orbiter. A preferred approach was selected although not pursued, given risks and schedule restrictions.

The two MPS vessels which were deemed the highest risk (MPS tanks on *Atlantis*) were replaced with the two flight spares. One of the removed tanks (SN-006) was retained for a future flight spare; the other (SN-007) was sacrificed for the Accelerated Stress Rupture Test, described later in this paper.

B. Operational Improvements

The Orbiter Engineering Team was tasked to develop changes to flight procedures to mitigate risk. One simple option would have been to reduce the upmass capability and reduce the pressures in the various systems, but the goal was to not adversely impact operations. The risk was determined to vary fairly linearly with time under pressure, adjusted for temperature. Effective time at standard temperature and pressure could be reduced by lowering pressure, temperature or time under pressure. A number of operational improvements were implemented which had the effect of lowering this effective time, based on model results described by a later formula.

First and foremost, it was noted that during the loading procedure, the thermodynamics of increasing the pressure on loading were associated with a large increase in temperature. Introducing a two stage loading process, where the tank was first loaded to a set pressure (such as 60% of full operating pressure) followed by a 'cooling off period', before the final loading raised the pressure to launch loads.

Several other changes, which collectively had a large impact were as follows. Original tank filling specifications defined a minimum level of pressure without imposing temperature limits; however, later experimental evidence on single Kevlar fibers and epoxy impregnated Kevlar strands demonstrated a significant accelerating effect of increased temperature on their stress-rupture performance. Thus a new operational procedure was instated that set specified temperature and pressure limits for future risk mitigation. Furthermore, system checkout tests between Shuttle flights were limited to 80% launch load rather than full operating pressure. Loading of the tanks was moved later into the launch preparation procedure. Originally, loading of the flight gasses occurred as early as 12 days prior to launch; tank loading was changed to commence at five days before launch. Also, in order to protect ground personnel, pad access was restricted to essential personnel after pressurizing the tanks. All personnel were restricted from pad access during tanking pressurization.

The Shuttle Program was able to perform an off-load (load reduction) in the helium system for OMS, but not for MPS. For Shuttle Missions to ISS, pressure in the helium tanks is driven by the failure scenario of a launch abort (Return To Launch Site-RTLS). In this scenario, it is necessary to expel the liquid fuels in the OMS liquid propellant tanks in order that the Orbiter vehicle will meet landing center of mass constraints. Reducing the OMS liquid fuel and corresponding helium pressure meets RTLS constraints and only loses 10 pounds Ascent Performance Margin (APM). OMS COPV pressure was reduced from 4875 psia to 4450 psia. This pressure change itself resulted in a reduced effective accumulated time, per mission, from 105 hrs to 35 hrs. The risk is essentially linear with effective time, thus the risk to stress rupture was reduced by a factor of 3. The reduced OMS pressure became the standard load. The lower pressures were to be used when possible; and it was expected only two missions would require the full load: the ISS Assembly Mission 1J/A (STS-123) and the Hubble Servicing Mission (STS-125). The 1J/A mission had a particularly heavy payload, the first module of the Japanese laboratory, Japanese Experiment Module (Kibō). Ultimately this mission flew with the standard load. STS-125 required the additional propellant load for the 28.5° Inclination orbit needed to reach the Hubble Space Telescope. Due to the desire to take additional supplies to the ISS at the end of the Space Shuttle Program and the confidence in accepting the flight risk due to the conservatism in the reliability model used to quantify risk of catastrophic stress rupture, the last three flights (STS-133, 134 and 135) were also flown with full loads.

Similar MPS analysis resulted in the recommendation to not perform a further off-load. The MPS helium load was driven by the failure scenario in which one Space Shuttle Main Engine (SSME) 'went out' during Ascent. A 100 psia offload in MPS helium corresponded to 30 seconds margin in SSME Engine Run Time. The change in MPS COPV risk (associated with a 100 psia offload) was considered small relative to the margin needed to 'protect' against an SSME failure (additional run-time in the failed SSME scenario).

C. Reliability Model

In order to quantify the risk of failure, the Orbiter COPV team developed a detailed reliability model. There are three essential components. First, how does Kevlar fiber perform in stress-rupture for a given stress ratio (i.e., sustained fiber stress level divided by effective fiber strength as determined from COPV burst test results) at given effective time? Second, at which stress ratio value are the Orbiter tanks when loaded to nominal pressure? Third, accounting for various levels of pressure and changes in temperature, what is the effective time that a COPV tank will experience in a typical Space Shuttle flight? Each of these three components are handled separately, as follows:

1. Kevlar Fiber Model

In order to develop the reliability model, the Kevlar vessel and strand databases were carefully analyzed. The first observation of the data was that fiber volume fraction influences apparent or ‘delivered’ fiber strength (even after applying the rule-of-mixtures), but the effect on stress-rupture lifetime is different. This complicated data interpretation in comparing various Kevlar/epoxy strand experiments, and the LLNL and Orbiter COPVs, among which the fiber volume fraction differed substantially.

2. Corrections to Kevlar Database

There were several adjustments to the database that needed to be implemented to properly characterize Kevlar fiber stress-rupture behavior and remove extraneous variability effects. Each adjustment, applied to the database, served actually to increase the Orbiter vessel reliability and were a necessary contribution to achieve flight rationale.

Another problematic aspect arose in the LLNL vessel data base in that each spool of Kevlar fiber was used to make 30 vessels, and there were 8 spools, so vessel samples for each test condition were randomly selected from these spools. Unfortunately, the spools themselves proved to be significantly different in terms of the the burst strengths of their resulting vessels, and stress-rupture lifetimes they imparted to their vessels, and an analytical approach was developed to separate out the spool-to-spool effects in order to better quantify the variability and uncertainty associated with the reliability estimates. Note that the Orbiter COPVs typically mixed tows from many spools to make the wrap bands and the large denier spools themselves mixed smaller denier fiber sources, so the spool effect was not an issue. An example of the spool-to-spool effects was discovered around 1980 Dr. Frank Gerstle of Sandia National Laboratories. Dr. Gerstle discovered an anomaly in spool seven such that half the fibers had twice the cross-sectional area.³ This anomaly source was reported as a DuPont processing error.

In comparing stress-rupture behavior of epoxy-impregnated strands and small vessels, that had been tested another important discrepancy in the data was observed, particularly when comparing the LLNL and presumed

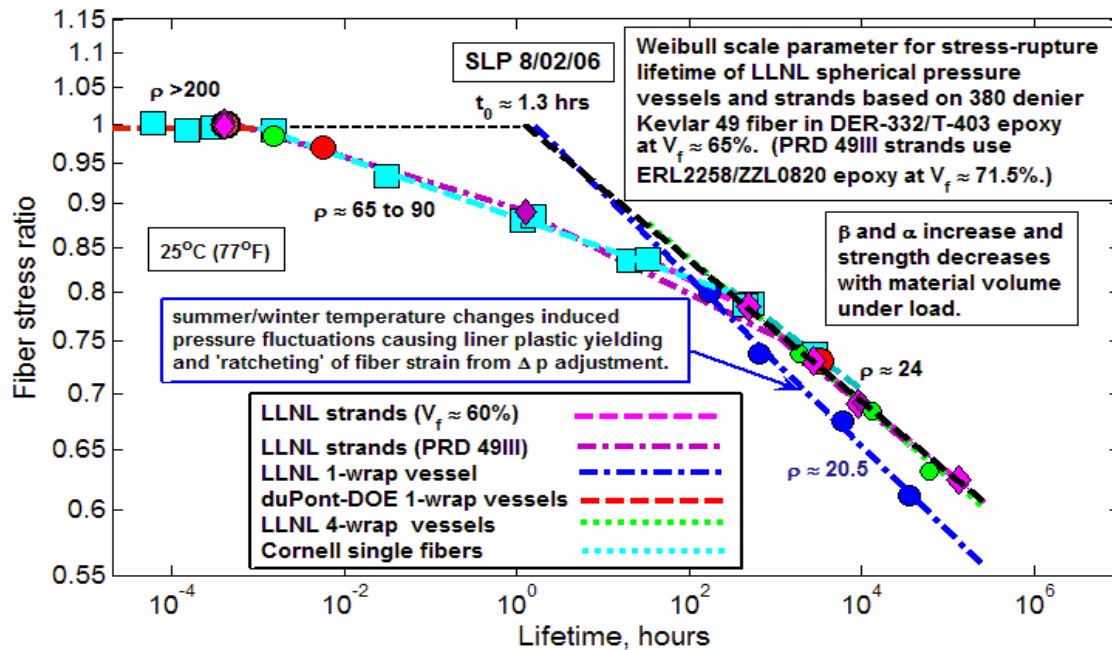


Figure 4. Kevlar Database. Incorporating all known data, the Orbiter Team developed a universal curve for Lifetime versus Fiber Stress Ratio.

identical DuPont/DOE replicates. It was discovered that the liner aluminum materials were not identical in yield strength due to different processing, and the DuPont/DOE tanks appeared weaker in burst strength yet produced relatively longer lifetimes than the LLNL vessels, this led to further discovery of winter-summer temperature fluctuations, which coupled with “topping off vessels” found at times to have low pressures and subsequent liner yielding during higher temperature periods led to a pressure-temperature ratchet effect on fiber strains. This discovery was important to determining the proper exponent for lifetime versus stress level (about 24 versus the ratchet-driven 20.5) as seen in Figure 4, and thus, controlling and better understanding the level of uncertainty in the reliability model. Without these discoveries, reliability predictions would not have been too pessimistic to allow Orbiter flight.

3. Orbiter Stress Ratio Model

Interpretation of SN011 vs SN002Q burst strengths^{5,7} and delta volumes had a large influence on determining stress ratios for remaining 40-inch tanks in the fleet, as shown in Figure 5.

Factors that went into a model for the stress ratio for each OMS or MPS COPV in the fleet, stemmed from various scenarios and hypotheses regarding the mechanical state of each vessel (particularly their delta volumes), and the mechanical state and behavior (including delta volumes) of the two COPVs that had been burst tested, SN002-Q (data from original burst test in 1978) and SN011 (data from highly instrumented WSTF cycle and burst test in 2006). Three models were considered, Models 2, 3 and 4, (where Model 1 was the base model using only operating pressure and burst strength of SN002-Q but discarded after the burst test on SN011).

The stress ratio formulas, particularly Model 2, variously incorporated: (i) large gradients in fiber tensile stress that exist through the overwrap thickness and result from high permanent or delta volume growth from void compaction during the original proof test, and (ii) overwrap stiffness loss that becomes apparent after many pressure cycles following the original proof test but may not be immediately revealed as permanent volume growth in the proof test itself. This stiffness loss may be due to some combination of fiber damage during original proof and long term fiber creep effects, but the former are found to dominate. The stress gradient effects were treated in a Weibull strength distribution framework, to account for the scale effects induced by intensifying the high fiber stress over a smaller volume of fiber adjacent to the liner. Using the new formulas for SR various case studies were performed covering various damage and volume growth scenarios for OMS type vessels remaining in the Shuttle Fleet.

The simplest model of the three (Models 2,3, and 4 in Figure 5), was used by the COPV team for Reliability predictions. It used the low burst strength of SN011 (7667 psi) and its high delta volume (about 336 in³) together with the burst strength of SN002-Q (8010 psi) and its lower delta volume (256 in³) to determine, through delta volume scaling, the burst strength and nominal fiber stress ratio for each vessel in the fleet, since the specific delta volume for each one could be calculated from proof test records.

Model 2 was used for the accelerated stress rupture test discussed shortly, and took into account observations of potential stiffness loss and damage to SN011 seen in WSTF cycle testing as well as gradient effects through the overwrap thickness, that led to discounting the low burst strength of SN011 as an anomaly, highly unlikely in other vessels whose proof records showed no such effects other than relatively high delta volumes.

4. Calculating and Predicting Effective Time at Pressure

A method had to be developed to calculate the effective time, t_{eff} at standard temperature, T_{ref} , and maximum operating pressure, p_{mop} , relative to the clock time at actual temperature and pressure:

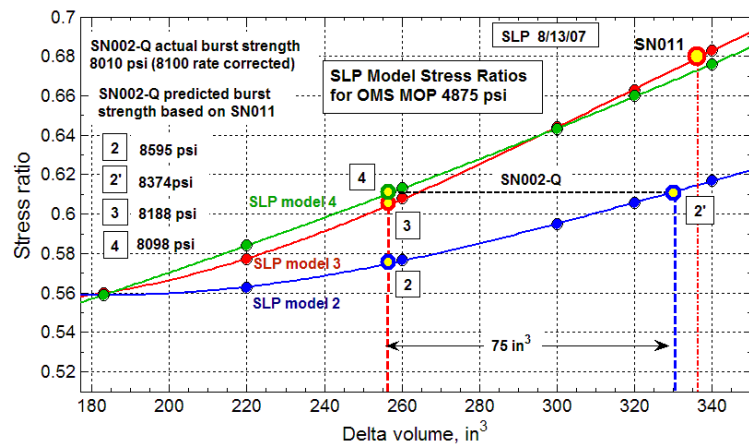


Figure 5. Orbiter Stress Ratio Model. Stress ratio as a function of Delta Volume, or Volume Growth during autofrettage. Four candidate models were shown. The Program selected the less conservative Model 4.

$$t_{eff} = t \left(\frac{p_0}{p_{mop}} \right)^{\rho_{ref}(1-T_{ref}/T_{op})} \left(\frac{p_{op}}{p_{mop}} \right)^{\rho_{ref}(T_{ref}/T_{op})} \quad (1)$$

where p_0 is a reference pressure at zero degrees Kelvin, p_{mop} is maximum operating pressure, T_{ref} is reference temperature (300 degrees Kelvin), T_{op} is actual operating temperature, and p_{op} is actual operating pressure and ρ_{ref} is the power-law exponent for lifetime vs. pressure under reference temperature conditions. From this relation, it is noted that excursions to high temperatures induce a significant penalty on effective time. By applying the integral form of this relation to the time, temperature, pressure profile during a mission cycle, from loading through launch and landing, it is possible to calculate the effective time that had accrued during a single flight.

In a typical flight cycle, the tanks would increase pressure during loading, but would also increase in temperature due to thermodynamic effects. The tanks would be loaded a few days before launch and stay pressurized for several days until launch. Often times there would be several launch delays due to weather conditions or technical conditions with other Shuttle subsystems. During the ascent phase, the SSMEs would fire during the first 8.5 minutes of flights. The bulk of the mission's MPS helium consumption would occur during this ascent. The pressures would decrease appreciably such that subsequent risk to this failure mode was negligible. During the ascent phase, the OMS would also perform a thruster firing. Although small compared to the overall OMS engine firings throughout the mission, the helium tank level would fall sufficiently to reduce the pressures such that subsequently COPV risk would be very small.

Calculating the exact effective time after the mission might be of general interest, but merely an academic exercise with respect to calculating the risk after the mission took place. In order to assess the risk before the flight, it was necessary to predict ahead of time what the effective time would be for a mission cycle. Historical data was useful in estimating the loading profiles that would be realized, even after the improvements were made to the Shuttle operational procedures. It was noted that operational changes reduced accumulated effective time (and hence risk) by a factor of 2.5.

One key factor was to estimate launch delays that might extend the number of days the Orbiter tanks stayed pressurized prior to launch. OPO decided to carry two days margin for launch delays. It was noted that in the history of the program, the average number of days was closer to 5. However, this average was closer to 2 for the RTF flights, post *Columbia*. For the last 20 flights of the Shuttle Program, these estimates proved conservative. 95% of the projections for predicted effective time were below the values realized (often as much as 50%); the remaining 5% of the projections which exceed the targets did so by 3-10%.

Changes in the Space Shuttle Program flight manifest also impacted the COPV risk. There is a different risk attributed to each Orbiter; changing the number of flights per vehicle (while keeping the total number of flights constant) affected the overall risk. For the Hubble Servicing Mission (STS-125, *Atlantis*), special preparations had to be taken to enable a Launch on Need (LON). Because this mission did not reach the International Space Station, a LON needed to be available within seven days or consumables on *Atlantis* would run out before the rescue vehicle arrived. To support this contingency launch requirement, the Orbiter COPVs on the rescue vehicle needed to be pressurized prior to the launch of STS-125, essentially placing an extra cycle and accruing effective time of one flight on the backup vehicle COPVs. The last minute postponement of the STS-125 flight resulted in STS-127 (*Endeavour*) instead of STS-119 (*Discovery*) serving as the contingency rescue vehicle. The flight risk was tracked throughout the Space Shuttle Program and updated to account for these types of manifest changes.

5. Released Reliability Model

A graphical user interface (GUI) model developed in Matlab was released for calculating the reliability. This tool was

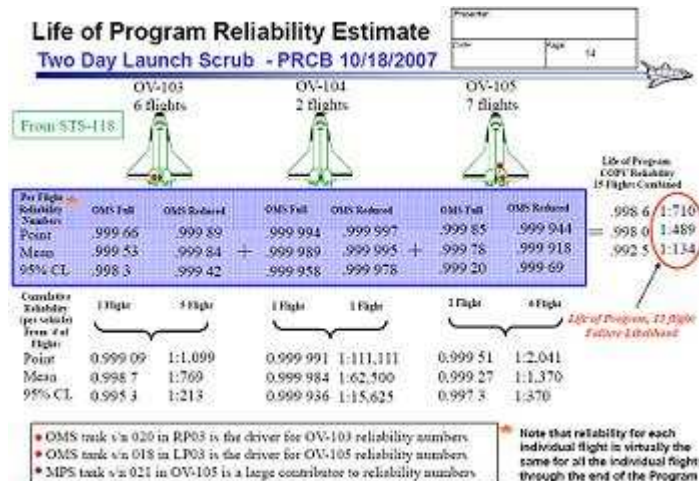


Figure 6. Reliability Calculations. Presented at the Space Shuttle Program Requirements Control Board on October 18, 2007, the Orbiter Team presented the reliability per flight, per Orbiter Vehicle and for the life of the program. *Discovery* (OV-103), *Atlantis* (OV-104) and *Endeavour* (OV-105) reliability numbers are presented separately; the cumulative risk is on the right hand side of this chart.

configured for each Orbiter vehicle and was used to evaluate various Shuttle flight configurations and special conditions. The tool was available for use by the Space Shuttle Community. Standard configuration management practices were maintained so that results were reproducible and interested parties could independently review assumptions and parameter inputs.

6. *Evaluating Reliability*

The Orbiter engineering team was tasked to quantify the flight risk through the end of the program. The model accounted for the updated Kevlar database, the conservative stress ratio model and historical loading data to predict future accumulated time.

For a given a Orbiter mission, three separate reliability numbers were generated. The Point is the reliability prediction calculation based on the best-estimated values for key parameters. To account for uncertainty, a Monte Carlo Simulation was performed with key parameters randomized with a log-normal distribution, tied to the amount of data in the data base used in their estimation. The Mean and the 95% Confidence Limit was calculated from these simulations.

The Orbiter Engineering Team calculated the risk for the remainder of the program; the summary of the calculations that were presented to the Space Shuttle Program Requirements Control Board on October 18, 2007 are shown in Figure 6. In the Purple Box, the per flight reliability numbers for each Orbiter vehicle are shown, for the standard load (with the reduced OMS helium loading) and with the full load (without the off-load). Based on the flight manifest at that time, for the number of flights scheduled for each Orbiter vehicle, the numbers below the purple box are the risk per vehicle. The total risk to the Space Shuttle Program which is the product of the risk for the three Orbiters, is on the right hand side of the slide, circled in red.

A few interesting points should be noted. After the two MPS vessels were removed from *Atlantis*, that Orbiter vehicle went from having the lowest reliability to the highest reliability. The remaining risk to the fleet was primarily borne by three tanks; one OMS tank on *Discovery* and one OMS and on MPS tank on *Endeavour*.

The risk to each flight was considered as an independent event. For two subsequent flights on the same vehicle, extending the time on the first flight did affect the risk of the subsequent risk, the difference was negligible compared to the significant relative to the precision of the analysis.

For the Space Shuttle Program, the Orbiter Team based risk decisions on the Mean reliability. The difference between the Point and the Mean estimates provided a way to evaluate uncertainty in the risk determination. The 95% Confidence Limit was carried at the request of several individuals who preferred to assess risk in that manner.

7. *Adding Model Confidence through Test*

Flight certification is dependent on the reliability analysis to quantify the risk of stress rupture failure in existing flight vessels. Full certification of this reliability model would require a statistically significant number of lifetime tests to be performed and is impractical given the cost and limited flight hardware for certification testing purposes. One approach to confirm the reliability model is to perform a stress rupture test on a flight COPV⁶.

Since an extensive and fairly consistent data base is available on both ambient and elevated temperature performance of Kevlar49®/epoxy materials and small test vessels, the test was also accelerated in time by a factor of about 40 (under the pessimistic parameter assumptions) using a higher steady temperature than occurs in service (though not higher than has typically occurred in the past during the pressurization phase) but at the maximum operating pressure used in service. This strategy was designed to provide the necessary test information in a few months rather than the 200,000 hours (28.5 years) that would be required under standard service conditions. In fact, two temperature levels were selected to be run in sequence: the first at 130° F was to be applied until the time corresponding to mean reliability of 0.9986 was reached under the most pessimistic stress ratio and Weibull lifetime parameter values. At that point the temperature was to be increased to 160° F and the test continued until the vessel either fails in stress rupture or survives a pre-set time at which a third stress level would be contemplated.

III. Additional Investigations

Until the end of the Shuttle Program, the COPV Engineering Team was regularly tasked to perform analyses.

A. Accelerated Stress Rupture Test-Bayes Analysis

Full certification of the Orbiter reliability model would have required a statistically significant number of lifetime tests to be performed and was impractical given the cost and limited flight hardware for certification testing purposes. The Space Shuttle Program was limited to performing a single test on a flown vessel, SN-007 which was removed from *Atlantis*. The Bayes Analysis⁹ was performed to establish a criterion by which the single data point

would show increased confidence in the developed reliability model. Mathematically, how long would the single test vessel need to survive in which the model was shown to be valid? How long would the single test vessel need to survive to show that the model had significant conservatism?

Because the vessel far exceeded the lifetime estimates, it was universally accepted that there was conservatism in the model. However, had the vessel failed early, this analysis would have been critical to properly evaluating the impact on the reliability model calculations.

B. Raman Spectroscopy

Instead of determining fiber stress ratio from the delta volume during the original manufacturing process, a Raman Spectroscopy technique was proposed as a Non Destructive Evaluation technique⁴. Raman Spectroscopy technique for measuring certain patterns of fluctuation in fiber elastic strains over the outside vessel surface (where all but one wrap is exposed at certain locations) that are shown to directly correlate to increased fiber stress ratios and reduced reliability.

This technique was carried as a backup in the event that the Accelerated Stress Rupture Test had identified further work was needed.

C. Liner Buckling

Routine boroscopic inspection of the interior of an Orbiter COPV tank identified anomalous local depressions or valleys (indentations towards the center) in the titanium liner, these markings were presumed to have appeared after proof testing. The question was raised as to whether these indications increased the potential for liner buckling or were merely a cosmetic consequence of manufacturing whose impact on vessel integrity was inconsequential.

The analysis of the problem was to presume a depression of a prescribed magnitude and then determine if such a depression could lead to liner buckling. For the 40" Orbiter COPV, a criterion of 40 mil depressions was established as the critical depth at which buckling might develop. The measured magnitudes on the interior of the Orbiter tanks were less than 20 mil, and the Orbiter fleet was exonerated from this failure mode.⁸

D. Addition Reliability Calculations

Throughout the investigation and until the end of the Space Shuttle Program, the Orbiter Team was tasked to perform special analyses for flight activities. One example of the special analysis was for the STS-134 Launch.

STS-134: The COPV helium tanks were filled (on April 21, 2011) in preparation for the STS-134 Launch with a targeted launch date No Earlier Than (NET) April 29, 2011. The tanks were loaded early as to not interfere with employees observing the Easter holiday. Due to the Auxillary Power Unit (APU) anomaly and Range restrictions at Cape Canaveral, the next launch opportunity was NET May 8, 2011. Actual launch could have been further delayed due to troubleshooting and resolution of the APU anomaly. The COPV team was tasked to determine whether it would make sense, from a safety perspective, to depress the COPV tanks on the vehicle in order to reduce the risk of catastrophic stress rupture.

Comprehensive calculations using the Orbiter model were performed to quantify the risk of depressing and repressing the flight tanks and comparing the risk to leaving the tanks pressurized. The calculations showed that for the OMS tank, a depress/repress would not reduce risk unless there were at least a 10 day period during which the OMS helium tanks will be at a reduced pressure. It was noted that the critical issue was when the vehicle would be prepared for the next launch attempt and not when the actual launch would take place. A depress/repress of the MPS helium tanks was not warranted for any reasonable delay in the launch manifest.

IV. Beyond Shuttle

There were a great many lessons learned from the Orbiter COPV investigation. With regards to tank procurement, it is essential that COPV designers understand the complete system and not simply focus on meeting one requirement, such as burst pressure. It was recognized that designers should design to the safety certification requirements and then scale appropriately for tank parameters, such as tank volume and weight. Trying to add safety certifications considerations after the COPV is optimized to tank parameters is nearly impossible and can lead to catastrophic consequences.

The NASA COPV community has taken the safety approach from Shuttle and applied them to requirements for new NASA missions, including the International Space Station, Commercial Cargo and Crew, and unmanned scientific missions. NASA COPV engineers who worked these programs have also actively contributed to AIAA and ISO standards relating to COPV for which industry uses for the design and procurement of space vessels.

V. Conclusion

For the Space Shuttle Program, a comprehensive investigation into the reliability of the Kevlar COPV tanks were undertaken. Although many Program Managers and Engineers felt that stress rupture of Kevlar fiber was not credible, the flight rationale was based on sound engineering data and judgement. The Orbiter Engineering Team, after recognizing that tank procurement and replacement was not possible, developed a comprehensive reliability model to quantify the likelihood of occurrence. The Program implemented changes to the operational procedures to reduce the risk without adversely affecting mission capability. Lessons learned from this investigation have affected subsequent NASA programs and benefitted the space industry overall.

Acknowledgments

The authors would like to thank the members of the NESC Assessment Team and the Orbiter Project Engineering Team for their contributions to developing the flight rationale for the Kevlar COPV. The NESC Team who provided the framework for this investigation was comprised of Ken Cameron (Chairman), Lorie Grimes-Ledesma, Pappu Murthy, Stuart L. Phoenix, Regor Saulsberry, James Sutter, and John Thesken. Along with the authors, the Orbiter Engineering Team consisted of Valery Aksamentov, John Chan, Glenn Eccord, Edward Fitzgerald, Howard Flynn, Scott Forth, Joseph Hamilton, Kevin Johnson, Michael Kezirian, Horace Lamberth, Jesus Macias, Stuart L. Phoenix, Richard Russell, Donald Varanauski, Jerry Warren and Warren Woodworth. The authors would also like to thank the NASA Orbiter Project leads including Steven Poulos, Steven Stinch and William MacArthur. The authors are also grateful to the Boeing Shuttle Program Manager for his assistance and Support, John Mulholland.

References

- ¹ Forsythe, B. S., "Space Shuttle Orbiter OMS Helium 40-in. Kevlar COPV Cycle and Burst Testing," NASA WSTF-TR-1052-001-01-07, April 25, 2011.
- ² Gehman Jr., H. W., Columbia Space Shuttle: Accident Investigation Board, Report, Vol. 1, 2003.
- ³ Gerstle Jr., F. P., and Kunz, S.C., "Prediction of Long-Term Failure in Kevlar 49 Composites", *ASTM STP 813*, American Society for Testing and Materials, Philadelphia, 1983, pp.263-292.
- ⁴ Kezirian, M. T., Phoenix, S. L., and Eldridge, J., "Use of Raman Spectroscopy and Delta Volumes to Assess Stress Gradients in Large Kevlar/Epoxy COPVs," *50th AIAA/ASME/ASCE/AHS/ASC Structures, Structural Dynamics, and Materials Conference*, CP- AIAA-2009-2566, 2009.
- ⁵ Leifeste, M. R., "WSTF Post-burst Analysis of 40-in. OMS Helium COPV S/N 011," NASA WSTF-IR-1083-001-07, February 25, 2011.
- ⁶ Leifeste, M. Yoder, T. Lucero, R. Carden, A. Saulsberry, R. Cone, D. Wincheski, R. Madaras, E. Greene, N. and Beeson, H. "Helium 40-in. COPV Accelerated Stress Rupture Test," NASA WSTF-IR-1161-001-10, July 7, 2011.
- ⁷ NASA Engineering and Safety Center, "Orbiter Kevlar/Epoxy Composite Overwrapped Pressure Vessel Flight Rationale Technical Assessment Report, NASA RP-07-34, April 12, 2007.
- ⁸ Phoenix, S. L., and Kezirian, M. T., "Analysis of Potential Ti-Liner Buckling After Proof in Kevlar/Epoxy COPV," *50th AIAA/ASME/ASCE/AHS/ASC Structures, Structural Dynamics, and Materials Conference*, CP-AIAA-2009-2520, 2009.
- ⁹ Phoenix, S. L., Kezirian, M. T. and Murthy, P., "Bayes Analysis and Reliability Implications of Stress-Rupture Testing a Kevlar/Epoxy COPV using Temperature and Pressure Acceleration," *50th AIAA/ASME/ASCE/AHS/ASC Structures, Structural Dynamics, and Materials Conference*, CP- AIAA-2009-2569, 2009.
- ¹⁰ Sutter, R., Salem, J., Thesken, J., Russell, R., Littell, Rugerri, and Lefieste, M, "Material Issues in Space Shuttle Composite Overwrapped Pressure Vessels," *Aging Aircraft Conference*, 2008.