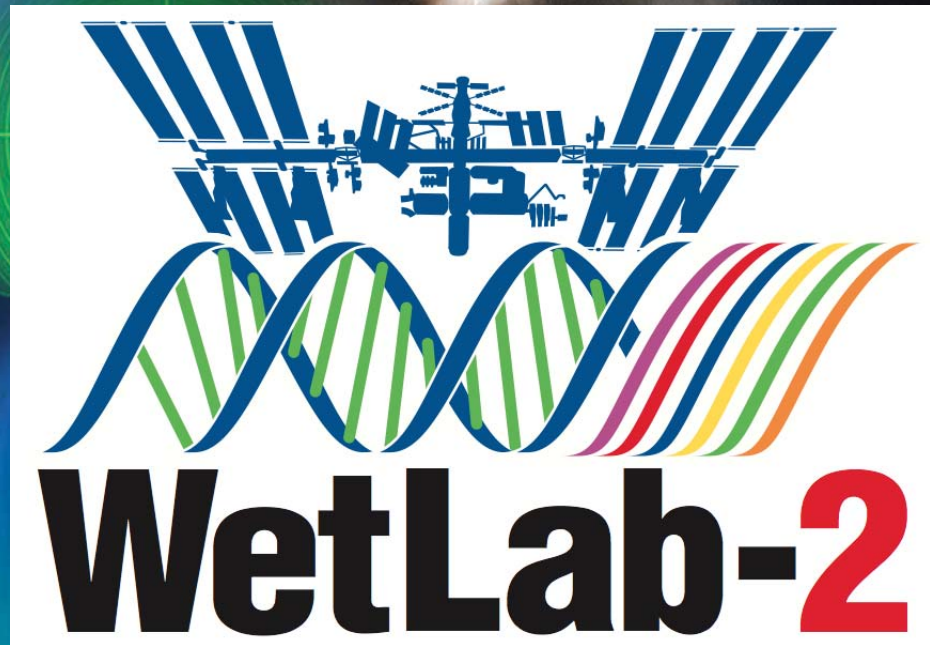




National Aeronautics and Space Administration



Development Status of the WetLab-2 Project: New Tools for On-orbit Real-time Gene Expression.

Jimmy Jung, Macarena Parra, Eduardo Almeida, Travis Boone, Tori Chinn, Antonio Ricco, Kenneth Souza, Liz Hyde, Rukhsana Yousuf, C. Scott Richey

Tuesday, Nov 5, 2013
ASGSR Conference



National Aeronautics and
Space Administration

Rationale and Goals for WetLab-2



Rationale

- Retirement of NASA Space Shuttle Program has negatively impacted the downmass of space flown samples.
- To date, analysis has only been conducted on returned samples, leaving the question of the effects of re-entry forces unanswered.
- Optimizes the utilization of the ISS for molecular biology and related technology applications and addresses the 2010 NRC Decadal Survey which strongly encourages the application of molecular biology technologies to ISS.

Goals

- Provide a system that has the capability to process and analyze samples from various sources and can provide, as its end point, gene expression information to PIs in the form of on-orbit real-time PCR (qRT-PCR) data.
- Wetlab-2 will enable expanded genomic research on ISS by developing tools that support *in situ* sample collection, processing, and analysis.
 - Capable of researching multiple sample types: bacterial, plant, insects, and mammalian samples.
 - System can be either an integrated system or made up of modular components.



National Aeronautics and
Space Administration

Engagement of Scientific Community WL-2 SWG



Dr. Cynthia Collins

Assistant Professor
Department of Chemical and Biological Engineering
Rensselaer Polytechnic Institute, Troy, NY
Experiments Flown: **STS-132 (Micro-2), STS-135 (Micro-2A)**

Dr. Mike Delp

Professor and Chair
Department of Applied Physiology and Kinesiology
University of Florida, Gainesville, FL
Experiments Flown: **STS-107, STS-131, STS-133, STS-135**

Dr. John Z. Kiss

Professor, Department of Biology
Dean of Graduate School
University of Mississippi, University, MS
Experiments Flown: **STS-81 (Preplastid), STS-84 (Plastid)
STS-121 (TROPI-1), STS-130 (TROPI-2),
STS-131 (BRIC-16)**

Dr. Greg Nelson

Professor, Radiation Medicine
Professor, Basic Sciences
School of Medicine
Loma Linda University, Loma Linda, CA
Experiments Flown: **STS-42 (Radiat), STS-76 (Elegans),
STS-108 (CBTM-1), STS-118 (CBTM-2), STS-135 (CBTM-3)**

Dr. Cheryl Nickerson

Professor
The Biodesign Institute, Infectious Diseases and Vaccinology
Arizona State University, Tempe, AZ
Experiments Flown: **STS-115 (Microbe), STS-123 (MDRV), STS-131 (STLImmune), STS-135)**

Dr. David Niesel

Professor & Chair
Microbiology & Immunology
University of Texas Medical Branch, Galveston, TX
Experiments Flown: **STS-118 (SPEGIS), STS-123 (MDRV),
PharmaSat**

Dr. Michael Roberts

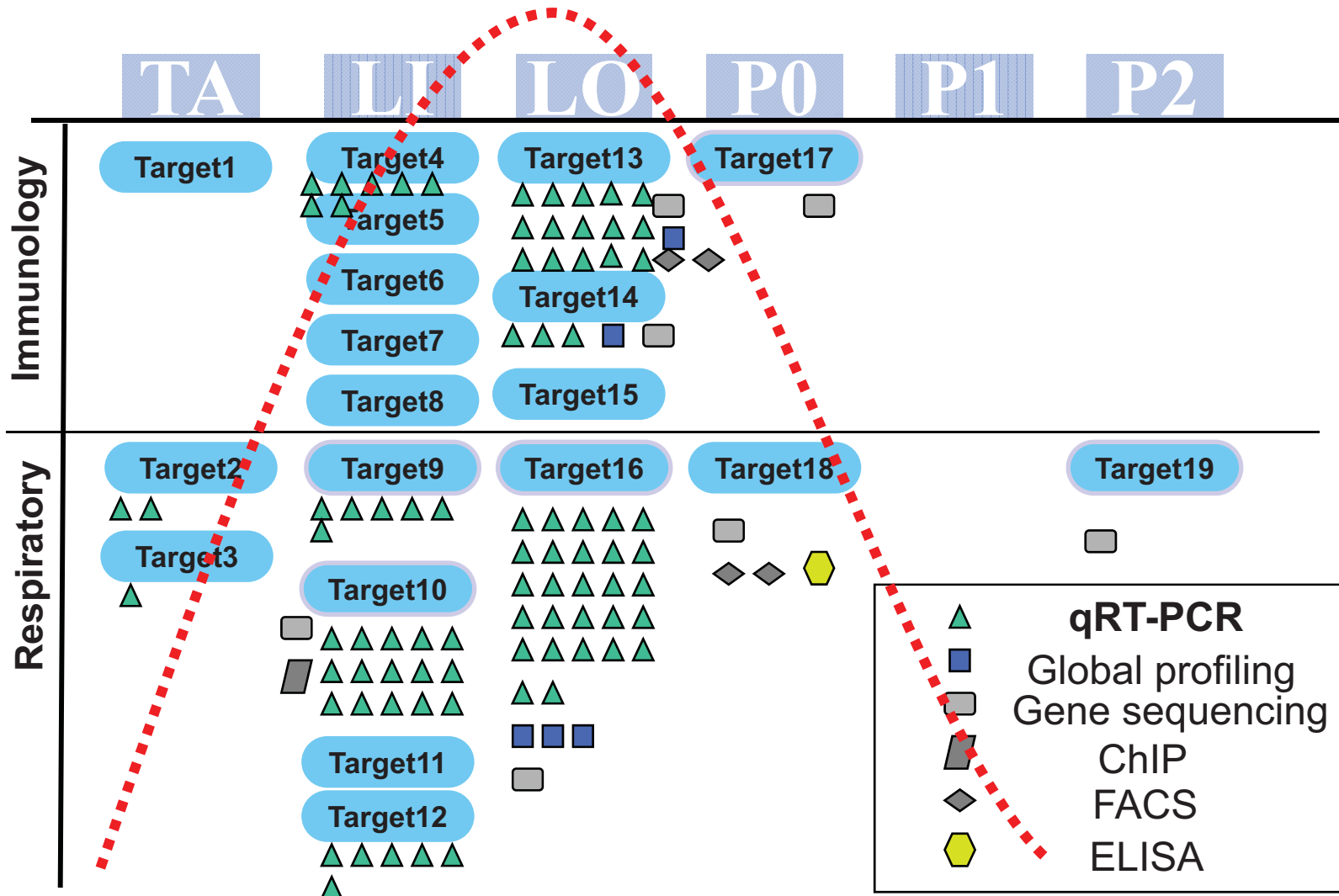
CASIS Representative
Experiments Flown: **STS-135 (SyNRGE)**

*At least 24 Total
Flight Experiments*



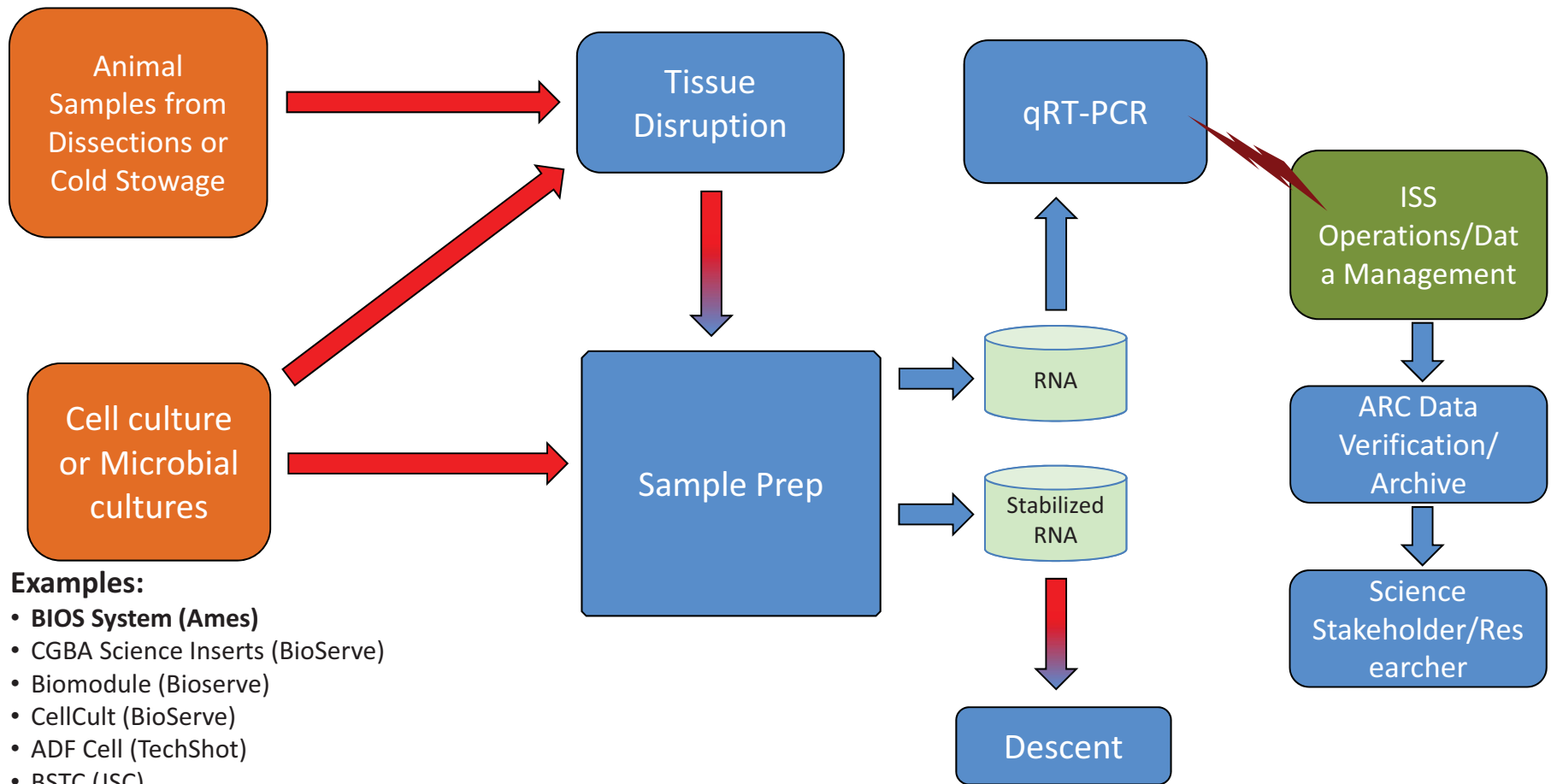
National Aeronautics and Space Administration

qRT-PCR Needed for Validation and Discovery





Concept of Operations



Examples:

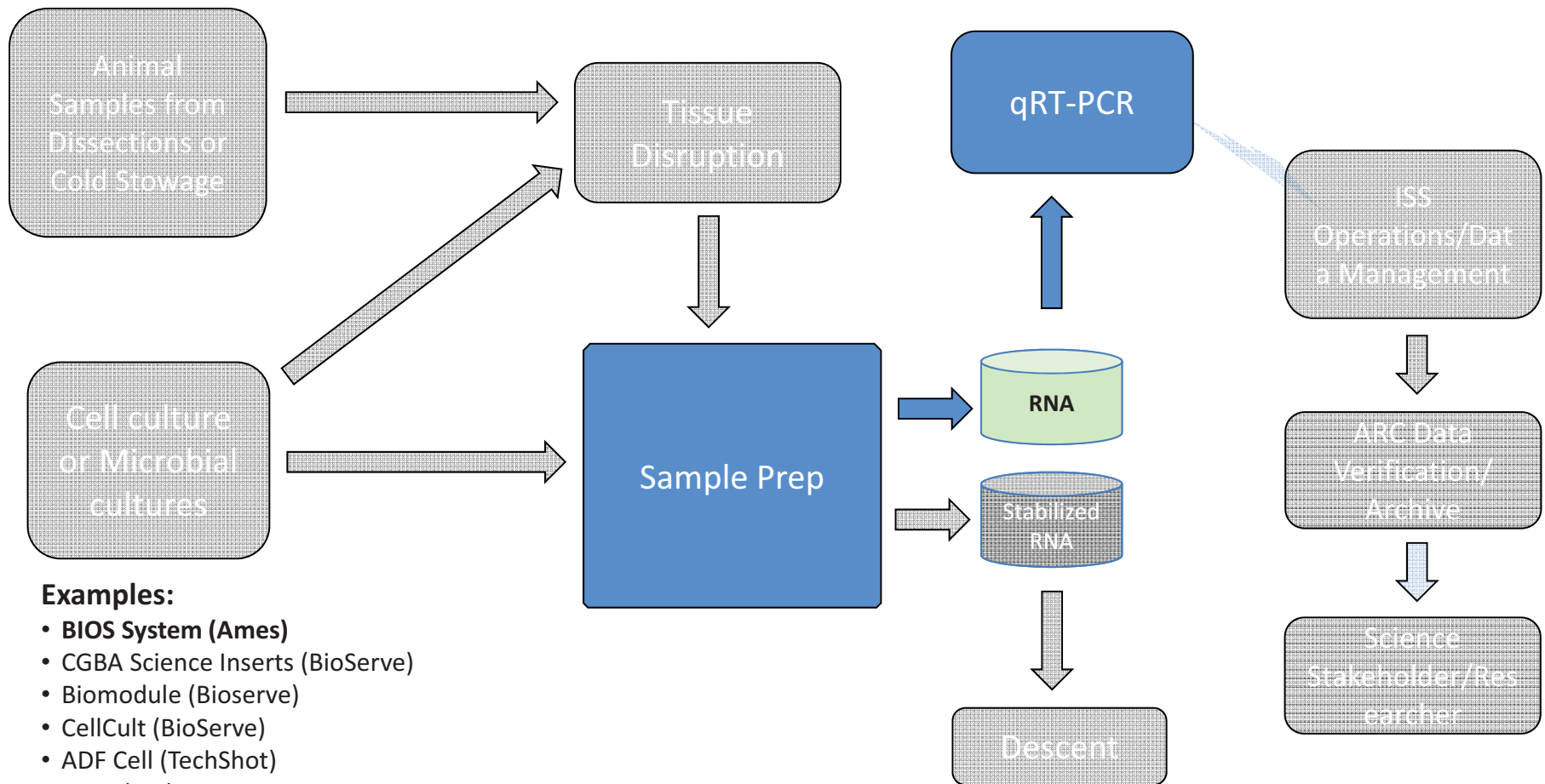
- BIOS System (Ames)
- CGBA Science Inserts (BioServe)
- Biomodule (BioServe)
- CellCult (BioServe)
- ADF Cell (TechShot)
- BSTC (JSC)
- RWPS (JSC)
- Fruit Fly Lab (Ames)
- Rodent Habitat (Ames)
- Seedling Growth (Ames)



National Aeronautics and
Space Administration

Concept of Operations

Sample Prep / qRT-PCR Specifics



Examples:

- BIOS System (Ames)
- CGBA Science Inserts (BioServe)
- Biomodule (BioServe)
- CellCult (BioServe)
- ADF Cell (TechShot)
- BSTC (JSC)
- RWPS (JSC)
- Fruit Fly Lab (Ames)
- Rodent Habitat (Ames)
- Seedling Growth (Ames)



National Aeronautics and
Space Administration

Instrument Constraints



Constraints

Works in microgravity or can be easily modified to do so

Low power consumption

Low heat output

Low noise levels during operation

Must have flexibility over primer and probe selection

Preferences

LED light source

Few moving parts

Can be modified to fit in single locker



National Aeronautics and
Space Administration

Instrument Selection



Cepheid SmartCycler

Modular Design

- **Total of sixteen modules**
- **Modules can be independently programmed and run**
- **If one module fails, other modules still function**
- **Configurable within ISS rack volume constraints**

Few moving parts (small fan in each module)

Rapid run time

Full flexibility over primer and probe selection and use

Multiplex capability: four fluorescence channels per module



Selection of a standard vs. automated instrument = we need to design a sample prep system



National Aeronautics and Space Administration

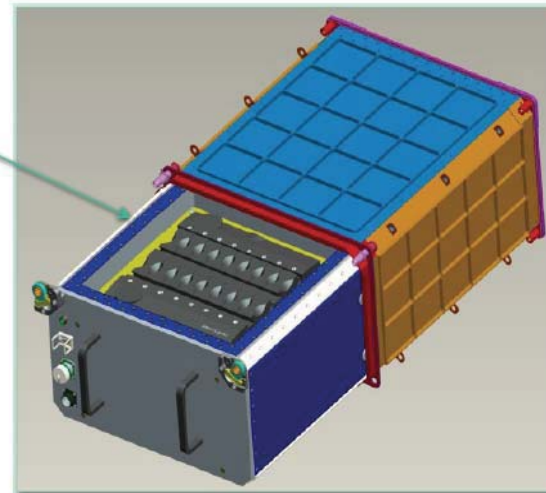
Gene Expression Enabling Tool: COTS Modified for ISS



Benchtop Model qRT-PCR Cycler (Cepheid SmartCycler)



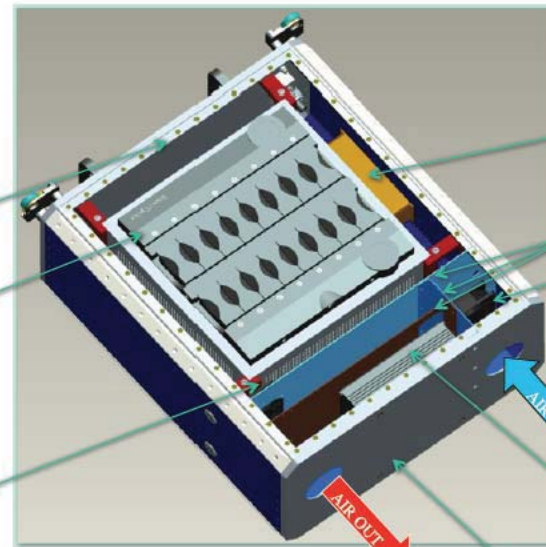
Stowage Tray inside locker (open position)



-Completed Engineering Studies for Spaceflight Unit

-Completed Spaceflight Unit Engineering Drawings

Lid Removed For Clarity
SmartCycler With Attachment Brackets



EMI Filter
Baffle
Fan 1
Air In
Power Supply

-Pending Manufacture And Flight Qualification

Fan 2

Back Panel

ISS Model Running on Express Rack Laptop



National Aeronautics and
Space Administration

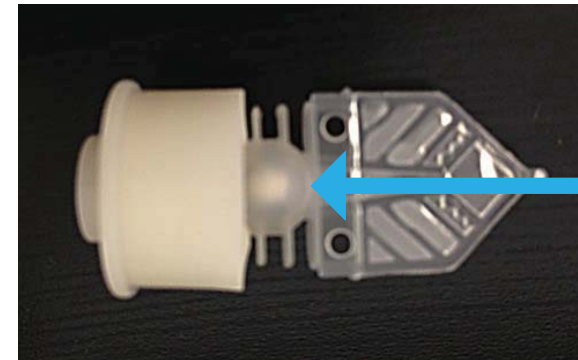
The qRT-PCR Enzyme and Reaction Tube: COTS Modified for ISS



Foil Pack with gene assay(s) can be kept at room temperature for 1 year

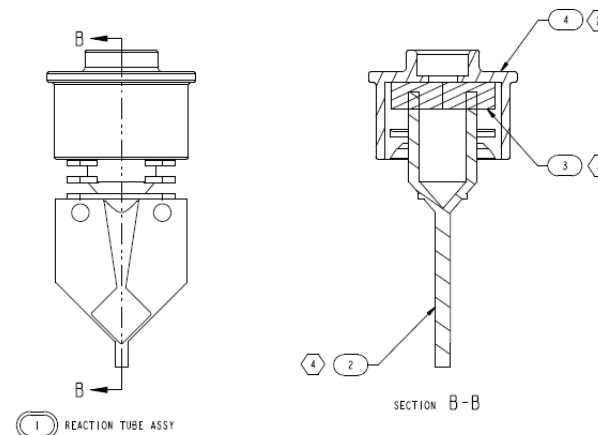


Requires only addition of sample through containment septum cap



Lyophilized
qRT-PCR
Chemistry
assay bead

Small-scale pilot assay production cost was less than \$50 per tube/assay





National Aeronautics and
Space Administration

Sample Prep Constraints



Crew Time

Whenever possible minimize the necessary crew manipulations

Keep crew operations as simple as possible

Cold Stowage

If possible, reagents should be long lived

If possible, reagents will not require storage at refrigerated or frozen temperatures

Hazardous chemicals

Limit Toxicity of chemicals

If possible, avoid alcohols

Containment

Plan to provide two levels of containment during sample preparation

Plan to provide one level of containment during qRT-PCR

Simplified RNA purification

Column based purification with minimal number of steps and complexity

Can be used for intronless genes (more sample types)

Can return excess pure RNA to PI for ground studies

Initial approach: design system that extracts RNA from 2-3 common sample types (mouse, yeast, *E. coli*)

RNA must be of high enough purity/quality for qRT-PCR

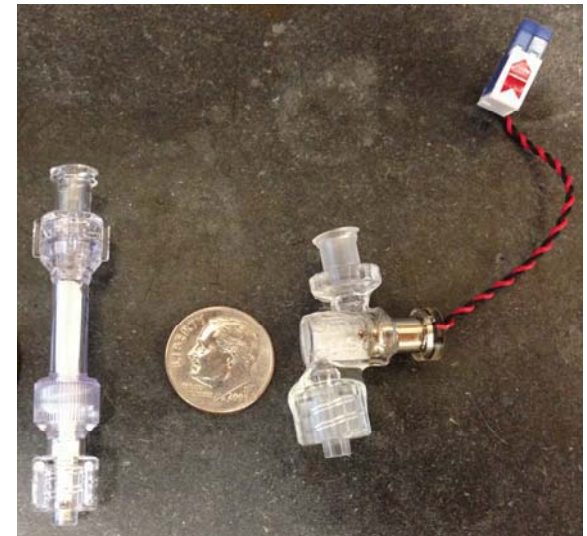
Expanded approach: design homogenization system that extracts RNA from plants, *Drosophila*, and rodent tissue

Limit Toxicity of chemicals

If possible, avoid alcohols

ClaremontBio System for RNA Purification

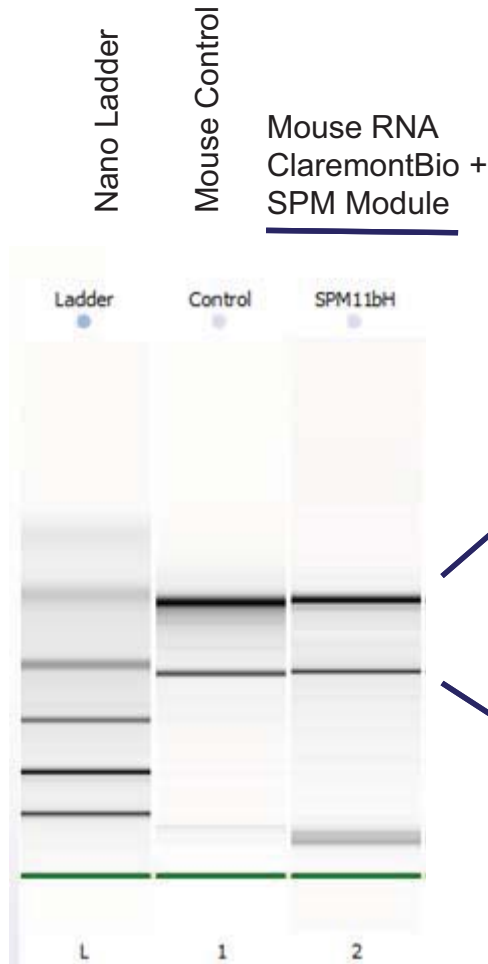
- Commercially available
- Simplified RNA purification procedure
- Small components
- OmniLyse cartridge capable of lysing yeast cells
- RNA was of sufficient quality for qRT-PCR
- System tested successfully with yeast, *E. coli*, and mammalian cells
- Company is willing to work with NASA to optimize the protocol for our needs
- Preliminary testing consistent with microgravity compatibility



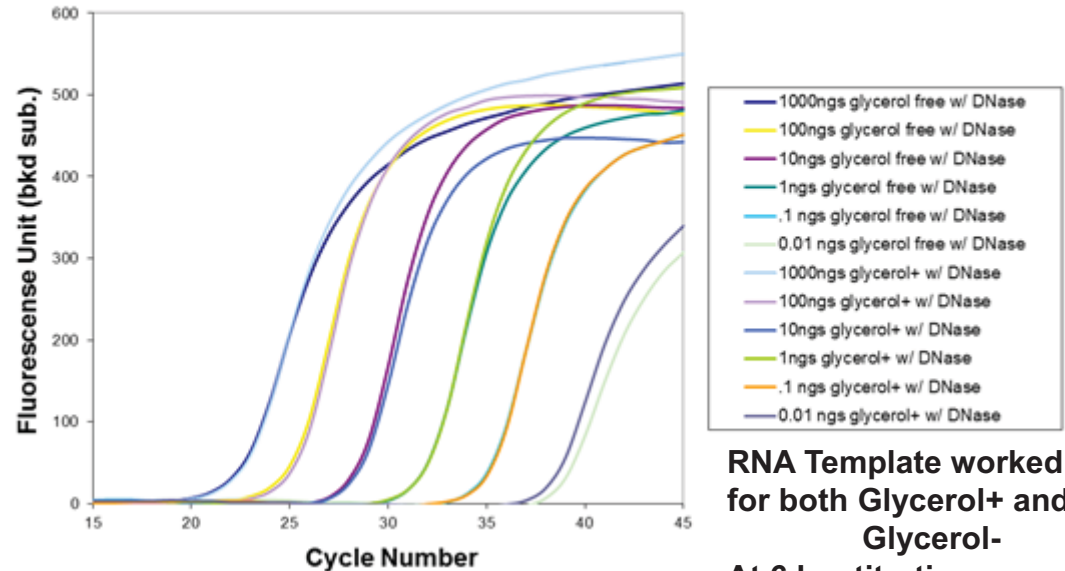


National Aeronautics and Space Administration

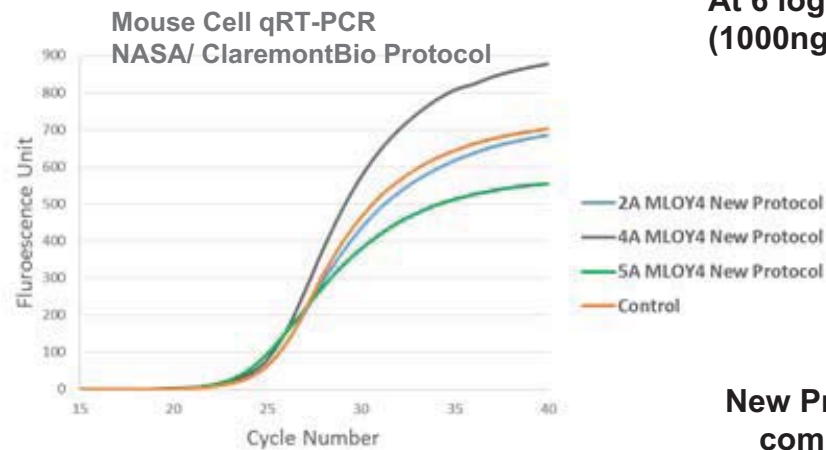
ClaremontBio Procedure RNA Isolation



Validation of ClaremontBio
RNA Isolated Only from OmniLyse®
Using Promega GoTaq qRT-PCR



**RNA Template worked
for both Glycerol+ and
Glycerol-
At 6 log titration
(1000ng to 10pg)**



**New Protocol Ct
comparable
to Qiagen Control**



National Aeronautics and Space Administration

WL-2 Integration of Sample to Data Process



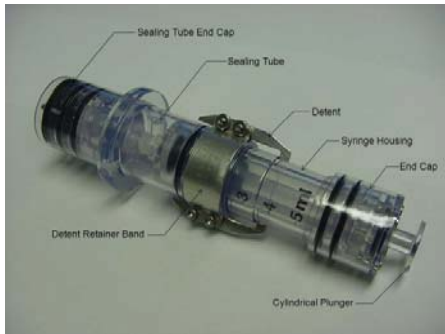
Sample Hardware



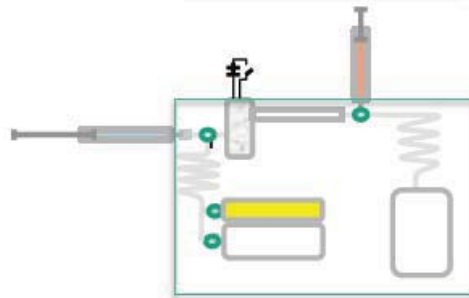
Sample Prep/Fluidic Hardware



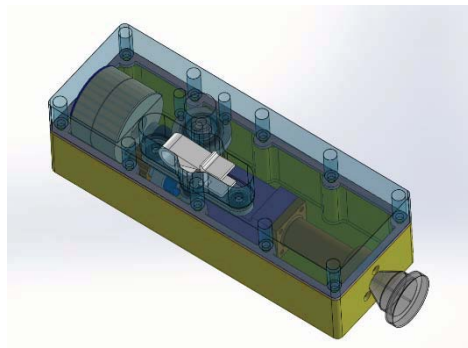
Rack Hardware



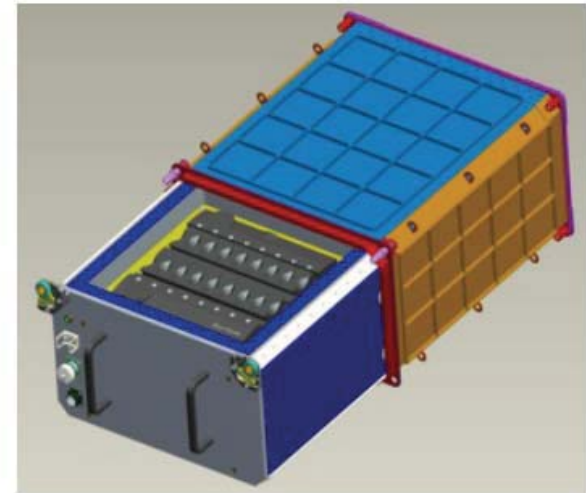
Techshot ACT2



Sample Prep Module



Reaction Assembly Module



Support H/W*

General Purpose hardware for entire operations



National Aeronautics and
Space Administration

Summary and Future Work



- Developed and tested a system capable of measuring gene expression on ISS.
- Components are modified COTS or have been designed and prototypes have been successfully tested.
- Custom assays can be produced economically (less than \$50) for various sample type genes and have a shelf-life of one year at room temperature.
- Work with PIs and SWGs on their specific sample type and genes of interest.



National Aeronautics and
Space Administration

Acknowledgements



Wetlab-2

Eduardo Almeida

Adrianna Aguilar

Travis Boone

Bob Dahlgren

Matt Everingham

Mike Henschke

Ed Houston

Al Howard

Elizabeth Hyde

Tom Luzod

Tony Ricco

Scott Richey

Wetlab-2(cont'd)

Kenneth Souza

Marla Smithwick

Omar Talavera

Eddie Uribe

Roy Vogler

Diana Wu

Rukhsana Yousuf

Ames Collaborators

Sharmila Bhattacharya- Fruit Fly Lab

Sungshin Choi- Rodent Habitat

Natalya Dvorochkin-BIOS

John Freeman- Seedling Growth

Kara Martin- Rodent Habitat



National Aeronautics and
Space Administration



Thank You!

A faint, semi-transparent image of a satellite with large solar panels is positioned behind the "Thank You!" text.



National Aeronautics and
Space Administration

BACK-UP SLIDES





National Aeronautics and
Space Administration

Experiment Design Examples for Number of Gene Assays



Biological Test Replicates	Module 1	Module 2	Module 3	Module 4	Module 5	Module 6	Module 7	Module 8	Module 9	Module 10	Module 11	Module 12	Module 13	Module 14	Module 15	Module 16	Total Genes Assays	
1	3	3	3	3	3	3	3	3	3	3	3	3	3	3	3	3	48	
3	3		3			3			3		3						15	
4	3			3			3			3			3				12	
8	3						3											6
16	3																	3



National Aeronautics and
Space Administration

Updates and Accomplishments

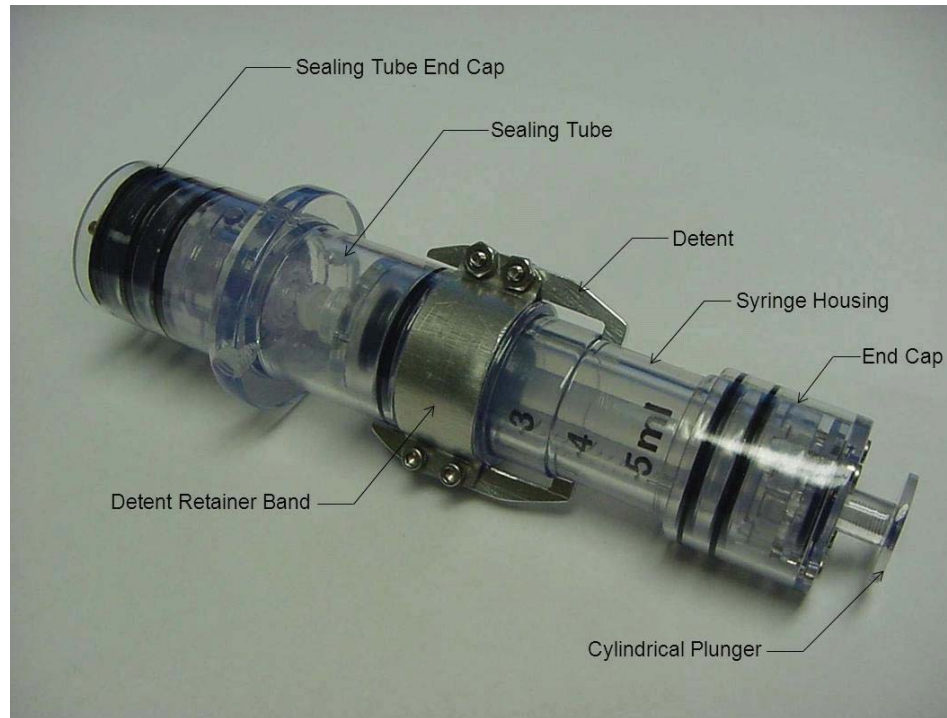


- **Completed SRR Dec 2012**
- Addressed 17/19 RIDS
- **Completed First SWG 4/2013**
 - SWG in line with Science Developments, test more sample types
 - Look to simplify operations, RNA Isolation for gene expression.
- **Completed PDR 5/2013**
- **Entered CDR 10/2013**
- **Stress testing reagents, systems, and modules, Finalized qRT-PCR Formulations, RNA Isolation Chemistry, Sample Prep Modules (SPM), Reaction Assembly Modules (RAM).**
- **WL-2 has been put on hold pending NASA review and direction.**



National Aeronautics and
Space Administration

TechShot Syringe for Sample Input



The ACT2 is a disposable device that transfers samples in a safe and contained manner from unique experiment-specific spaceflight hardware to on-orbit analytical tools for real-time analysis.

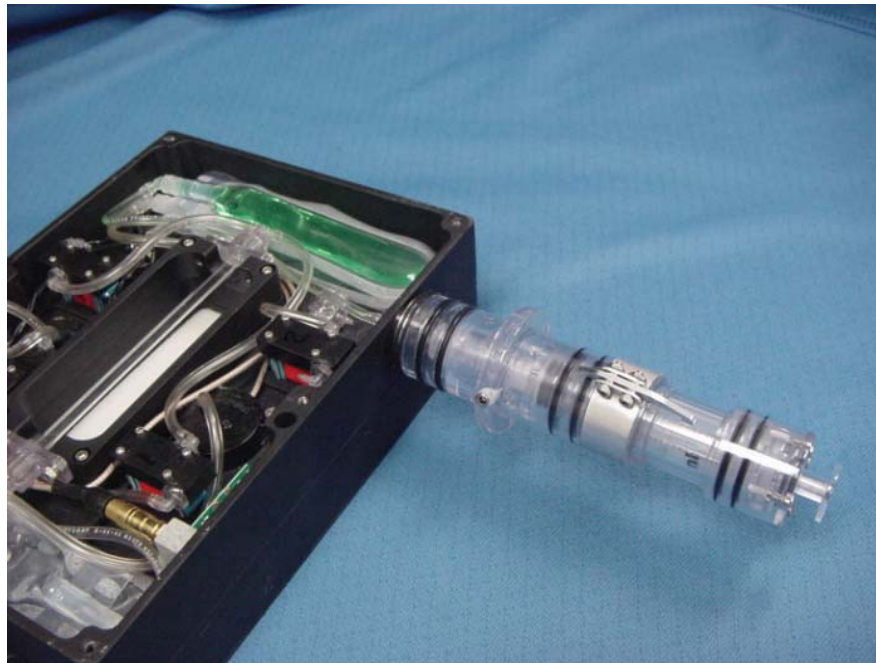


National Aeronautics and
Space Administration

Sample Prep Module SPM-11



- Modules has the ability to extract RNA template from multiple Sample types (cell based).
- Receives input homogenized tissue samples after using the Homogenization device.

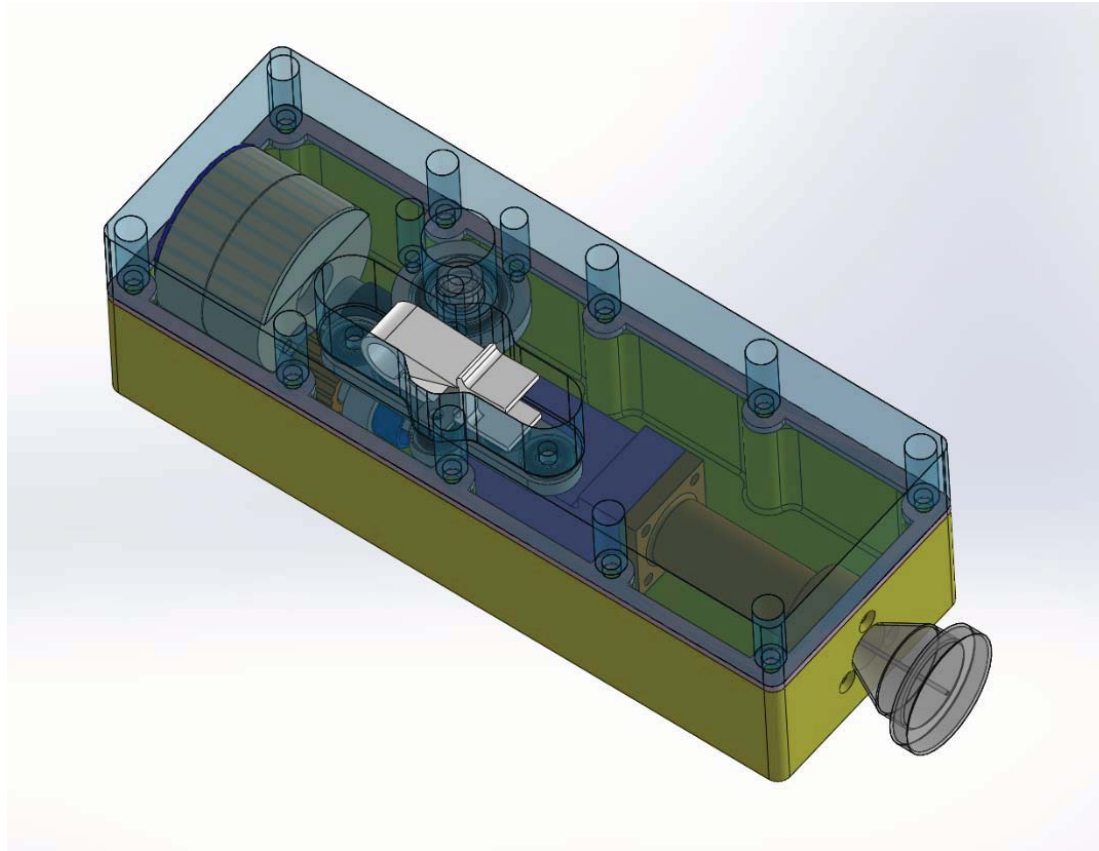


Conceptualized SPM with TechShot Syringe



National Aeronautics and
Space Administration

Reaction Assembly Module



Computer Model of the Reaction
Assembly Module