

NASA-CR
NAS-CR 54457



FACILITY FORM 602

N 65-33827 (ACCESSION NUMBER)	
<u>49</u> (PAGES)	(THRU)
	<u>1</u> (CODE)
	<u>17</u> (CATEGORY)

GPO PRICE	\$	_____
CSFTI PRICE(S)	\$	_____
Hard copy (HC)		<u>2.00</u>
Microfiche (MF)		<u>.50</u>

ff 653 July 65

GENERATION OF LONG TIME CREEP DATA ON REFRACTORY ALLOYS AT ELEVATED TEMPERATURES

EIGHTH QUARTERLY REPORT

Prepared for
NATIONAL AERONAUTICS AND SPACE ADMINISTRATION
LEWIS RESEARCH CENTER
UNDER CONTRACT NAS 3-2545

TRW EQUIPMENT LABORATORIES
CLEVELAND, OHIO

NAS-CR 54457

EIGHTH QUARTERLY REPORT
FOR
MARCH 26, 1965 to JUNE 26, 1965

GENERATION OF LONG TIME CREEP DATA
OF REFRACTORY ALLOYS AT ELEVATED TEMPERATURES

Prepared by:

J. C. Sawyer and E. A. Steigerwald

Prepared for:

National Aeronautics and Space Administration
Contract No. NAS 3-2545

Technical Management

Paul E. Moorhead
NASA - Lewis Research Center

July 7, 1965

Materials Research and Development Department
TRW Equipment Laboratories
TRW Inc.
23555 Euclid Avenue
Cleveland, Ohio 44117

NOTICE

This report was prepared as an account of Government-sponsored work. Neither the United States, nor the National Aeronautics and Space Administration (NASA), nor any person acting on behalf of NASA:

- a) Makes any warranty or representation, expressed or implied, with respect to the accuracy, completeness, or usefulness of the information contained in this report, or that the use of any information, apparatus, method, or process disclosed in this report may not infringe privately-owned rights; or
- b) Assumes any liabilities with respect to the use of, or for damages resulting from the use of any information, apparatus, method, or process disclosed in this report.

As used above, "person acting on behalf of NASA" includes any employee or contractor of NASA, or employee of such contractor, to the extent that such employees or contractor of NASA or employee of such contractor prepares, disseminates, or provides access to, any information pursuant to his employment of contract with NASA, or his employment with such contractor.

Requests for copies of this report should be referred to:

National Aeronautics and Space Administration
Office of Scientific and Technical Information
Washington 25, D. C.

Attention: AFSS-A

FOREWORD

The work described herein is being performed by TRW Inc. under the sponsorship of the National Aeronautics and Space Administration under Contract NAS 3-2545. The purpose of this study is to obtain design creep data on refractory metal alloys for use in space power systems.

The program is administered for TRW Inc. by E. A. Steigerwald, Program Manager. J. C. Sawyer is the Principal Investigator. C. H. Philleo, C. R. Honeycutt and R. R. Ebert contributed to the program.

ABSTRACT

33827

Creep data obtained under ultra high vacuum conditions are presented for molybdenum-base alloys TZC and TZM, columbium-base alloy Cb132M, and arc-melted tungsten, arc-melted tungsten-25% rhenium, and Sylvania A. The results indicate that in the 1800°F (982°C) to 2200°F (1204°C) temperature range the TZC alloy possesses the greatest degree of creep resistance.

author

TABLE OF CONTENTS

	<u>Page No.</u>
FOREWORD.....	i
ABSTRACT.....	ii
TABLE OF CONTENTS.....	iii
I. INTRODUCTION.....	1
II. MATERIALS AND PROCEDURE.....	1
III. EXPERIMENTAL RESULTS.....	4
A. Molybdenum-Base Alloys (TZC and TZM).....	4
B. Columbium-Base Alloy (Cb132M).....	11
C. Tungsten-Base Materials.....	11
IV. FUTURE WORK.....	15
V. APPENDICES.....	16

I. INTRODUCTION

Space electric power systems depend upon the use of refractory metals in a variety of component areas. A critical property parameter in the design of these systems is the long-time creep strength at very low partial pressures of oxygen and nitrogen. Contamination of refractory metal alloys can occur under conditions of 10^{-6} Torr and vacuums better than 10^{-8} Torr must be used to obtain creep measurements which can be employed for design of space components. The purpose of this program is to generate long-time creep data on selected refractory alloys which have potential use in advanced power systems. Emphasis has been placed on testing sheet alloys which can be employed for cladding or tubing applications and on forgeable high strength turbine alloys.

The design of the test units capable of operating at vacuums less than 10^{-8} Torr and temperatures up to 3200°F , has been previously described. Creep test data have also been presented for tungsten and tungsten-25% rhenium sheet, molybdenum base alloys TZC and TZM and columbium base alloys AS-30 and FS-85. Additional results for these alloys along with data obtained on columbium alloy Cb132M and the tungsten-base Sylvania A alloy are described in this report.

II. MATERIALS AND PROCEDURE

The materials currently included in the test program along with their compositions are presented in Tables 1 and 2. The tantalum base alloy T-111 has been recently added to the program due to its potential applicability as a tubing material. A TZM alloy obtained by Air Research Corporation* and received from NASA has also been included to provide a measure of the reproducibility in creep properties between two heats of the same material with different carbon contents.

A detailed description of the test specimen geometry, the test procedure, and the material processing history for TZM, TZC (Heat M80), AS-30, W, W-25Re, and Sylvania A were presented in the sixth and seventh Quarterly Reports. The processing history for Cb132M is given in Appendix I. The evaluation method involves testing the turbine or tubing alloys at

* R. L. Salley and E. A. Kovacevich, "Materials Investigation, Snap 50/Spur Program Mechanical Properties of TZM", Tech. Rep. AFAPL-TR-65 (March 23, 1965).

TABLE 1
Summary of Material Variables Being Evaluated in Creep Program

Material	Form	Test Temperature	Test Condition
Tungsten	Arc-Melted 0.030" Sheet	3200°F (1760°C)	Recrystallized 2 hours, 3200°F (1760°C)
Tungsten-25% Rhenium	Arc-Melted 0.030" Sheet	3200°F (1760°C)	Recrystallized 2 hours, 3200°F (1760°C)
Sylvania A	Powder Metallurgy 0.030" Sheet	3200°F (1760°C)	Recrystallized 2 hours, 3200°F (1760°C)
Tungsten	Vapor-deposited 1/8" Dia. Bars	3200°F (1760°C)	As-received
AS-30	3/4" Plate	2000-2200°F (1093-1204°C)	As-received, stress-relieved condition, (Rc 29)
Cbl32M	3/4" Plate	2056-2256°F (1124-1235°C)	Annealed 1 hour, 3092 °F (1700°C)
TZM (Climax Heat 7502)	"Pancake" Forging	2000°F (1093°C)	(Cond. 1) As-received, stress-relieved condition (Rc 32) (Cond. 2) Annealed 1 hour, 2850°F (1566°C)
TZM (Air Research)	Forging	1600-1856°F (871-1013°C)	As-received, stress-relieved, 2300°F (1260°C) 1 Hour
TZC	3/4" Plate	1856-2200°F (1013-1204°C)	Recrystallized 1 hour, 3092°F (1700°C)
T-222*	0.030" Sheet	1800-2200°F (982-1204°C)	Annealed 3000°F (1649°C) 1 Hour
T-111	0.030" Sheet	1800, 2000, 2200°F (982, 1093, 1204°C)	As-received

* Originally scheduled to be tested as ST-222 plate material, program plan revised to include material as T-222 grade applicable for tubing.

TABLE 2

Chemical Composition of Alloys Being Evaluated in Creep Program (Weight %)

Material	W	Re	Cb	Mo	Ta	Hf	C	N ₂	Ti	Zr	Ni	ppm	
												O ₂	H ₂
Tungsten	Bal.												
Tungsten-25% Rhenium	Bal.	24.9											
Sylvania A	Bal.				0.52		0.030						
AS-30			Bal.				0.064	0.015	0.03	0.940	0.02	145	3
Gb132M	15.0		Bal.	5.07	19.8		0.150			2.170		4	4
TZM (Climax Heat 7502)				Bal.			0.013	0.001	0.47	0.091			
TZM (Air Research)			Bal.				0.03	To be analyzed					
TZC			Bal.				0.080	0.002	1.02	0.130			
ST-222 (T-222)	10.4				Bal.	2.47	0.0086						
T-111	8.0				Bal.	1.85	0.004	0.005				140	4

3

temperatures between 1600 and 2250°F (871 and 1235°C) until a 1% total elongation is attained. The cladding materials are tested at 3200°F (1760°C) for a total extension up to 5%. In all cases the test environment (after approximately the first 100 hours of test) is less than 10^{-8} Torr and the applied stress levels are selected with the goal of obtaining creep data over total test times between 1000 and 10,000 hours.

III. EXPERIMENTAL RESULTS

A. Molybdenum-Base Alloys (TZC and TZM)

A detailed presentation of the creep data for all the tests is given in Appendix II. The creep curves for tests being conducted on TZC at temperatures of 1856, 2000, 2056, and 2200°F (1013, 1093, 1124, and 1204°C) are presented in Figures 1 and 2. The tendency for the creep curves to exhibit discontinuities was more prevalent at the higher test temperatures. Metallographic examination is currently being conducted in an attempt to relate the discontinuities in the creep curves to precipitation which is occurring during the test.

The hardness of the as-received TZC plate (Heat M-80) from the surface to the center showed little variation (DPH 288 to 285). A representative structure of the as-received material at the center of the plate is shown in Figure 3. The microstructure of the TZC plate after annealing at 3092°F (1700°C) for one hour is presented in Figure 4A; while the structure of a specimen after exposure to a 2000°F (1093°C) test condition for approximately 1200 hours is shown in Figure 4B. The annealing treatment produced a material with a 0.2% yield strength of 69.5 ksi (47.2×10^9 N/m²), a tensile strength of 68.6 ksi (47.4×10^9 N/m²) and a zero reduction in area at room temperature when measured transverse to the rolling direction. The annealing treatment did not result in a completely recrystallized structure, however, it did produce a noticeable reduction in hardness (DPH 288 to DPH 235). After testing for approximately 1200 hours at 2000°F (1093°C) the hardness of the TZC increased to DPH 350 indicating that significant precipitation hardening had occurred during testing.

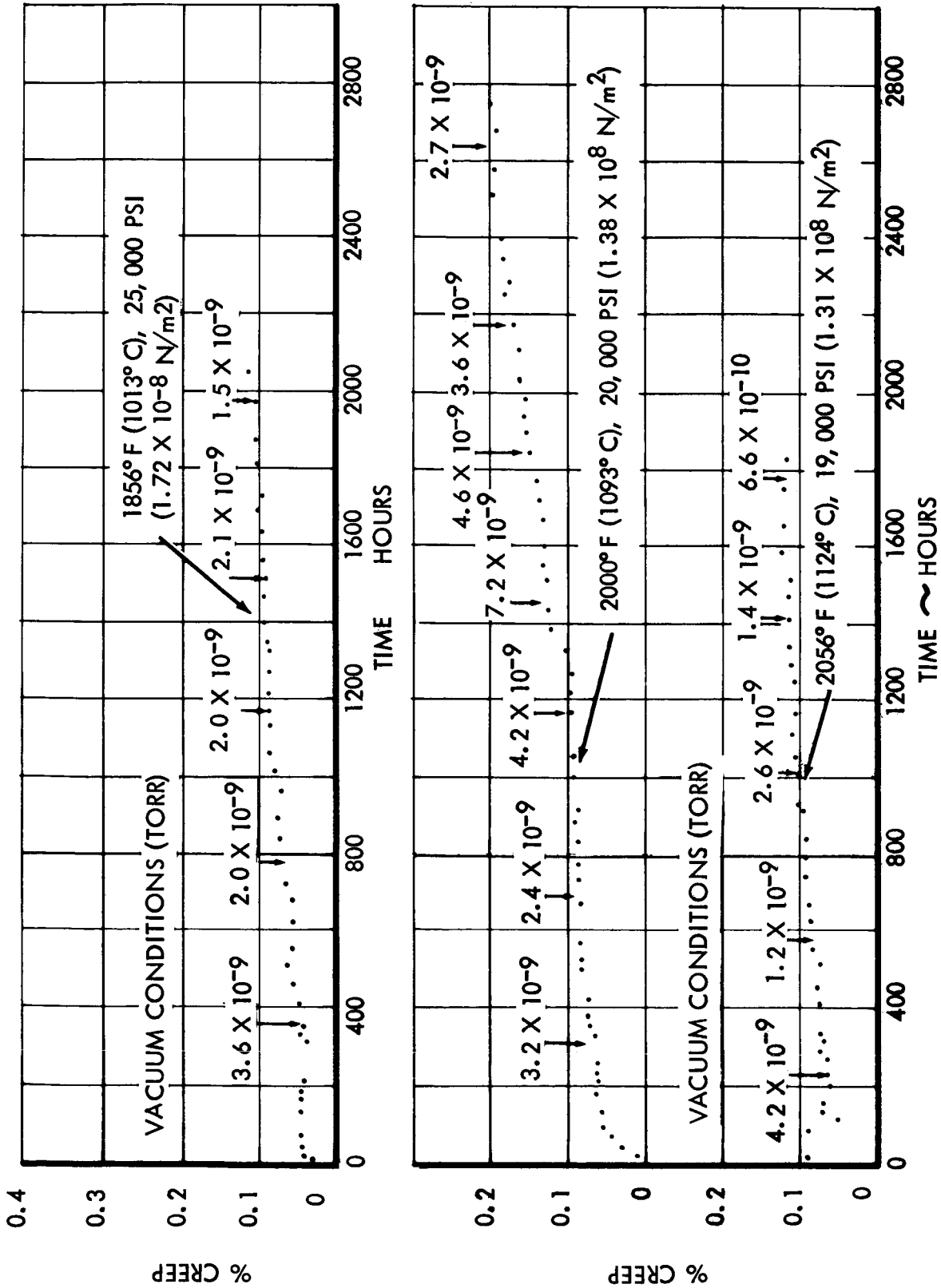


FIGURE 1. CREEP DATA FOR TZC PLATE (HEAT M-80) RECRYSTALLIZED AT 3092°F (1700°C), TESTED IN VACUUM ENVIRONMENT

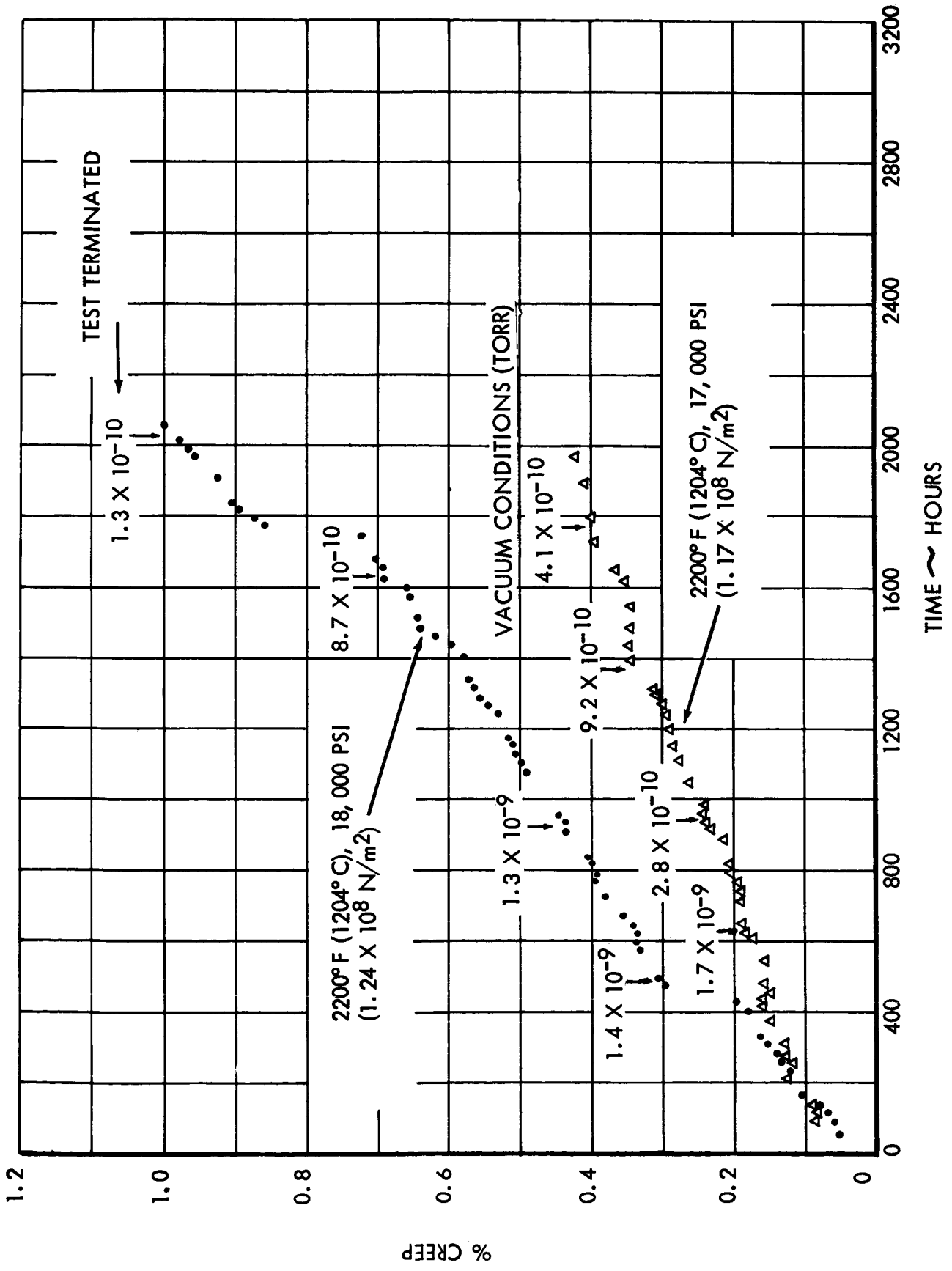
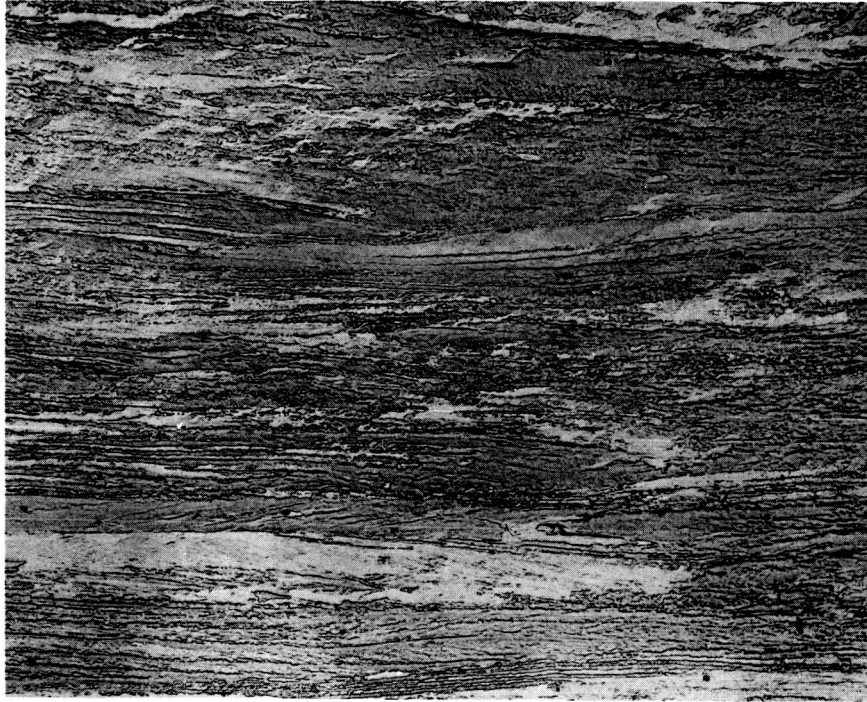
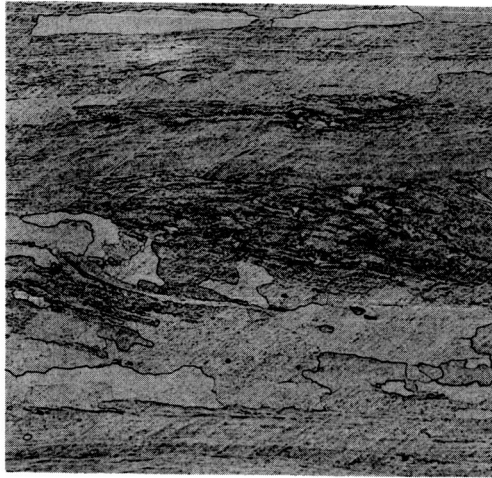


FIGURE 2. CREEP DATA FOR TZC PLATE (HEAT M-80) RECRYSTALLIZED AT 3092° F (1700° C), TESTED IN VACUUM ENVIRONMENT



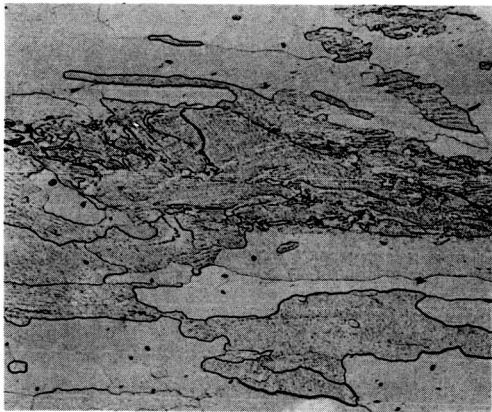
100X

FIGURE 3. STRUCTURE OF TZC ALLOY IN AS-RECEIVED CONDITION,
ETCHANT: 15% HF, 15% H₂ SO₄, 8% HNO₃, 62% H₂O



100X

A. STRUCTURE AFTER ANNEALING AT 1700° C FOR 1 HOUR
HARDNESS DPH 288



100X

B. STRUCTURE AFTER ANNEALING AT 1700° C FOR 1 HOUR AND TESTING
FOR 1196 HOURS AT 1094° C (2000° F) HARDNESS DPH 350

FIGURE 4. STRUCTURE OF TZC ALLOY (HEAT M-80) AFTER ANNEALING AND
AFTER TESTING. ETCHANT: 15% HF, 15% H₂SO₄, 8% HNO₃, 62% H₂

The creep behavior for TZM (Heat 7502) in both the as-received (stress-relieved) and annealed condition is presented in Figure 5. The as-received material exhibited a relatively normal creep curve while the annealed condition produced a very rapid increase in the total elongation at approximately 350 hours. The sharp increase was followed by a low creep rate and time intervals where actual specimen contraction was observed. Although no definite explanation is apparent for this behavior it is characteristic of conditions where a phase change and creep are occurring simultaneously.*

The Air Research TZM alloy received from NASA is currently under tests at 1856°F (1013°C) and 24,000 psi (1.65×10^8 N/m²). After 496 hours a total extension of 0.02% has been obtained.

A comparison of the creep properties of the TZC and TZM material is presented in Figure 6 on a Larson-Miller plot using a constant of 15. The stress to produce 0.2% total extension in TZC was approximately a linear function of the Larson-Miller parameter over a relatively large range of times and temperatures. The data obtained for the stress-relieved TZM (0.013%C) (Heat 7502) indicated that this material had creep resistance which was significantly below the TZC alloy. The plot for the 0.5% creep level indicated that a slight deviation from linearity was present at the lower values of the Larson-Miller parameter.

B. Columbiuim-Base Alloy (Cb132M)

The creep properties of the Cb132M alloy were evaluated after annealing the material for one hour at 3092°F (1700°C). This treatment produced a partially recrystallized structure (see Figure 7) having the room temperature properties listed in Table 3.

TABLE 3

Room Temperature Properties of Cb132M after Annealing at 3092°F (1700°C)
for One Hour in Vacuum (10^{-6} Torr)

0.2% Yield Strength	109.8 ksi (7.56×10^8 N/m ²)
Tensile Strength	121.2 ksi (8.36×10^8 N/m ²)
Elongation (2")	4.2%
Reduction in Area	4.7%
Strain Rate	0.005 in/in/min.

* R. W. Fountain and M. Korchynsky, "The Phenomenon of 'Negative Creep' in Alloys", Trans. ASM, 51, 108, (1959).

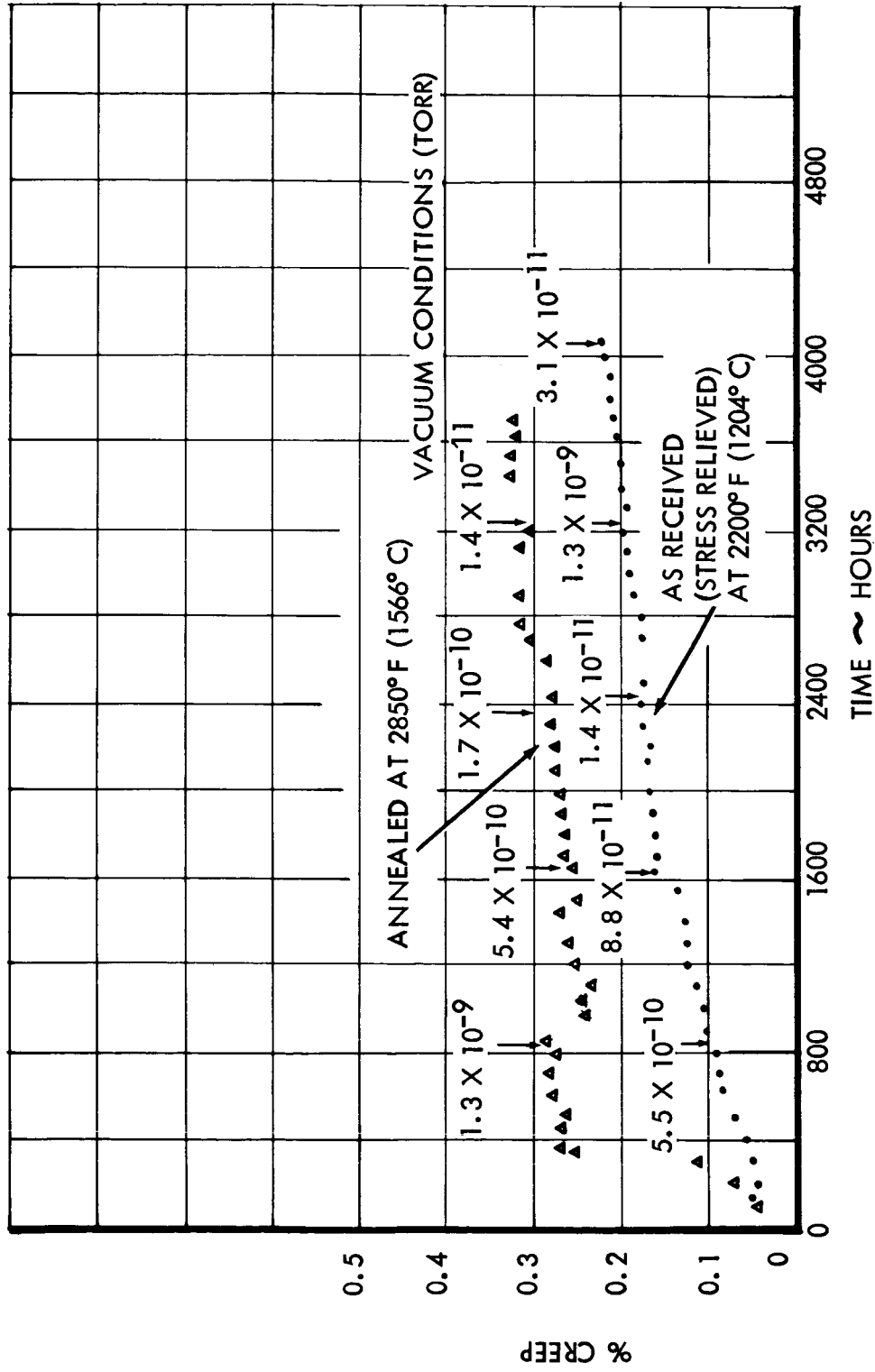


FIGURE 5. CREEP DATA FOR TZM (HEAT 7502) AT 2000°F (1093°C), 10,000 PSI (6.9 x 10⁸ N/m²) TESTED IN VACUUM ENVIRONMENT

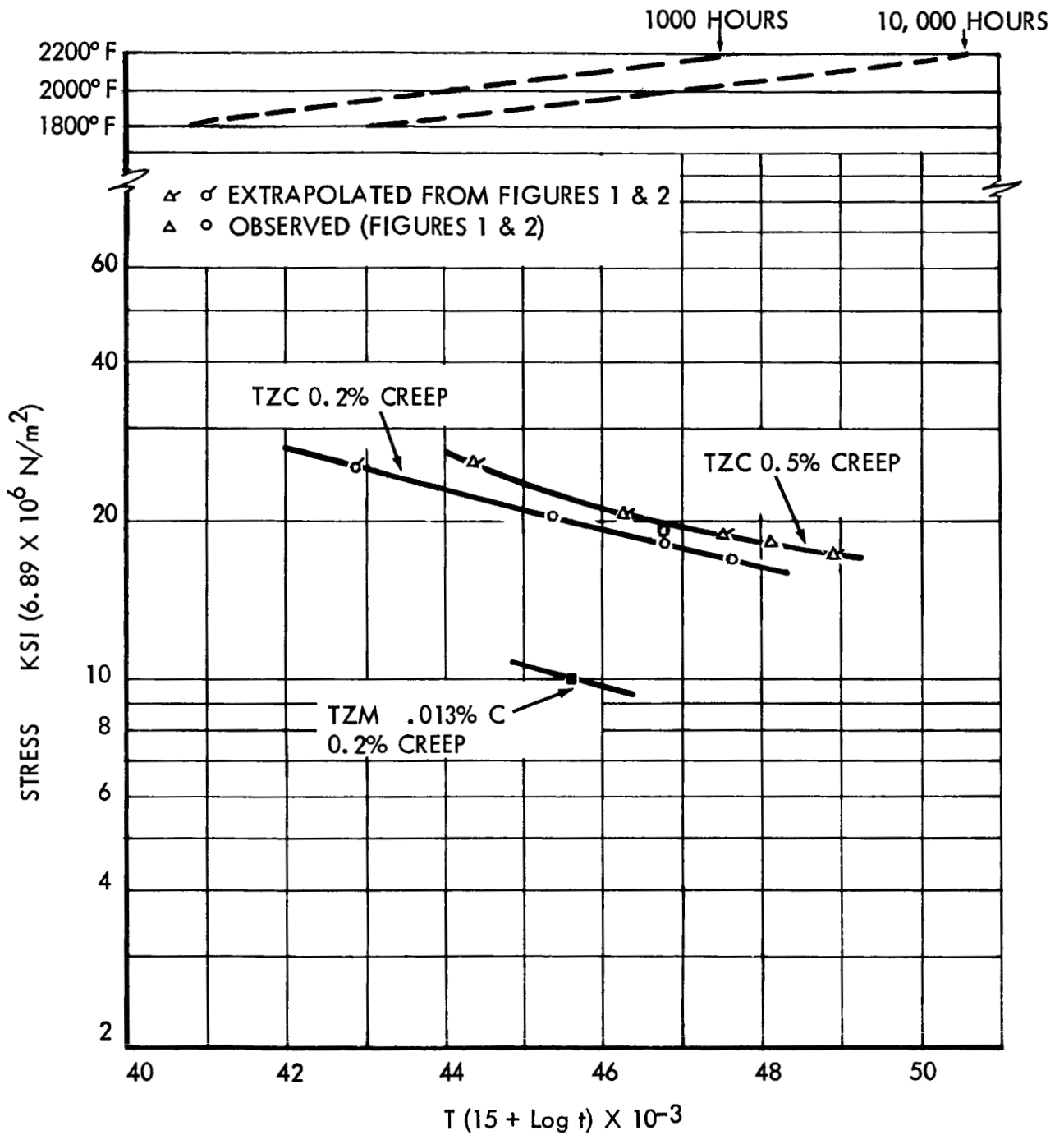


FIGURE 6. LARSON-MILLER PLOT OF CREEP DATA FOR TZC (HEAT M-80) AND TZM (HEAT 7502)



100X

FIGURE 7. MICROSTRUCTURE OF Cb 132M ALLOY AFTER ANNEALING AT 3092° F (1700° C) FOR ONE HOUR, ETCHANT: 15% HF, 15% H₂SO₄, 8% HNO₃, 62% H₂O

Creep test data obtained at 2056°F (1124°C) on Cb132M are summarized in Figure 8. A comparison of the two columbium base alloys, Cb132M and AS-30, is presented in terms of the Larson-Miller parameter in Figure 9. At the stresses evaluated, the Cb132M alloy had creep resistance superior to AS-30 but inferior to the molybdenum alloys. An additional test is being conducted at 2200°F (1204°C), 8,000 psi ($5.5 \times 10^7 \text{ N/m}^2$) to examine the behavior of Cb132M at higher values of the Larson-Miller parameter.

C. Tungsten-Base Materials

The results of creep tests conducted on arc-melted tungsten and tungsten-25% rhenium alloys were summarized in the last Quarterly Progress Report for total extensions of 1%. Results obtained during this report period included additional creep data for tungsten, tungsten-25% rhenium, and Sylvania A. The tungsten and tungsten-25% rhenium creep curves are shown in Figure 10. There was a tendency for the tungsten tests at 1000 psi ($6.8 \times 10^6 \text{ N/m}^2$) to exhibit a continuously decreasing creep rate. As a result, the extrapolations of short-time data would tend to predict creep extensions which were significantly greater than the true values. At the relatively low stress of 1000 psi ($6.8 \times 10^6 \text{ N/m}^2$) the unalloyed tungsten showed a total extension at 3200°F (1760°C) of 2.47% after approximately 3000 hours, while an extrapolation of the data after 1000 hours would have resulted in a prediction which was 50% higher.

The Sylvania A material possessed a large number of imperfections in the surface of the sheet and examination by radiography was required to insure that these defects were not located in the specimen gauge section. Two tests were initiated with this material, however, specimen failure occurred in both cases outside the gauge section at approximately the position where the specimen passed through the furnace heat shields. The failure appeared to be initiated by a brittle crack which propagated from one side. The resultant bending stresses and reduction in cross-sectional area were sufficient to cause specimen failure. The specimens were machined by electric discharge methods and examination prior to testing indicated that the cracks were not induced by the machining operation. At a stress of 5000 psi ($3.45 \times 10^8 \text{ N/m}^2$) a total extension of 0.25% was obtained in 18 hours on the first specimen and a creep of 0.20% in 26 hours on the second specimen. The microstructure of the Sylvania A material after testing is shown in Figure 11.

IV. FUTURE WORK

During the next report period additional tests will be initiated on the Air Research TZM material obtained from NASA. The T-222 material has been received and will also be tested along with the vapor-deposited tungsten.

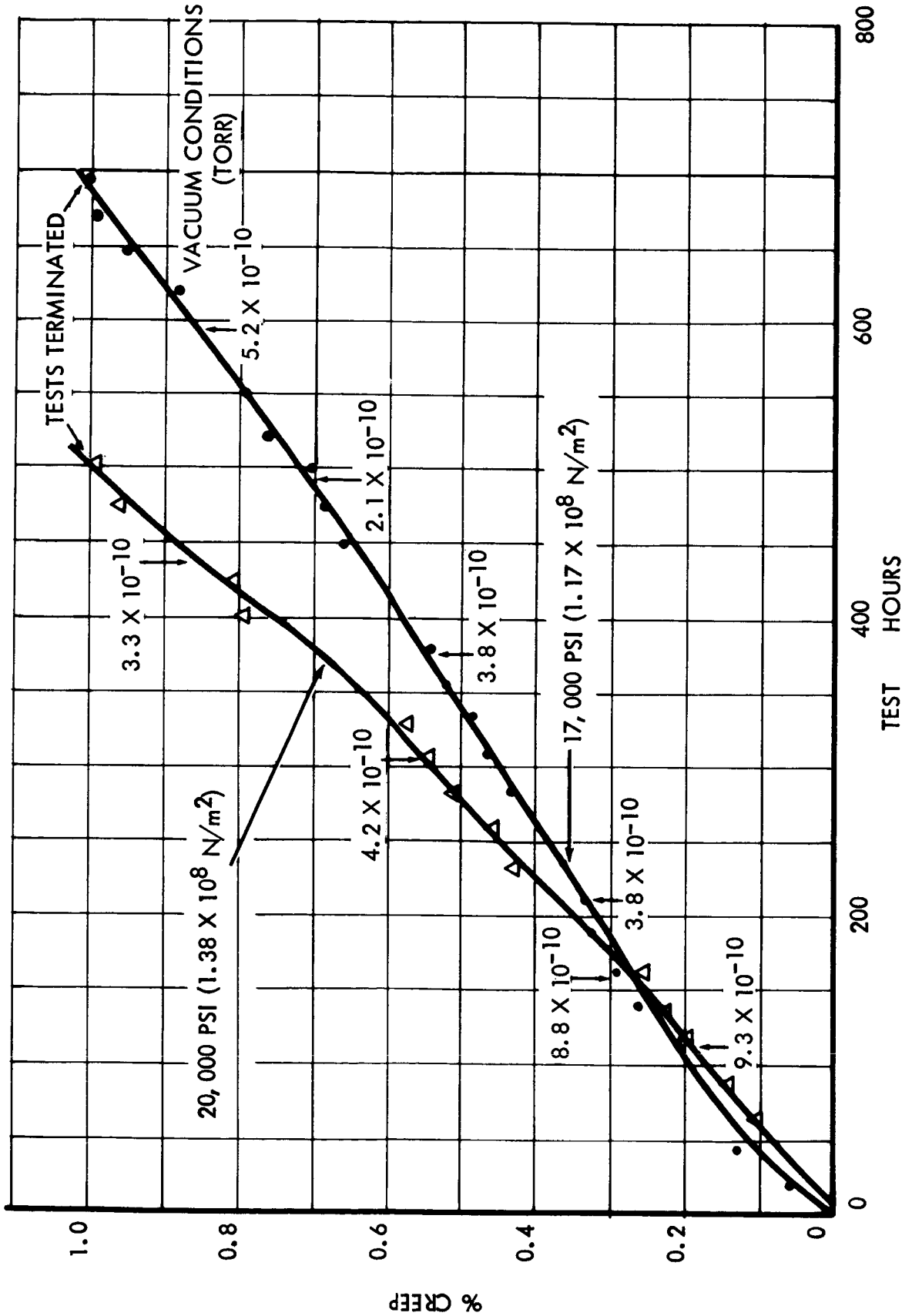


FIGURE 8. CREEP DATA FOR Cb 132 M ANNEALED AT 3092°F (1700°C) FOR 1 HOUR, TESTED AT 2056°F (1124°C) IN VACUUM ENVIRONMENT

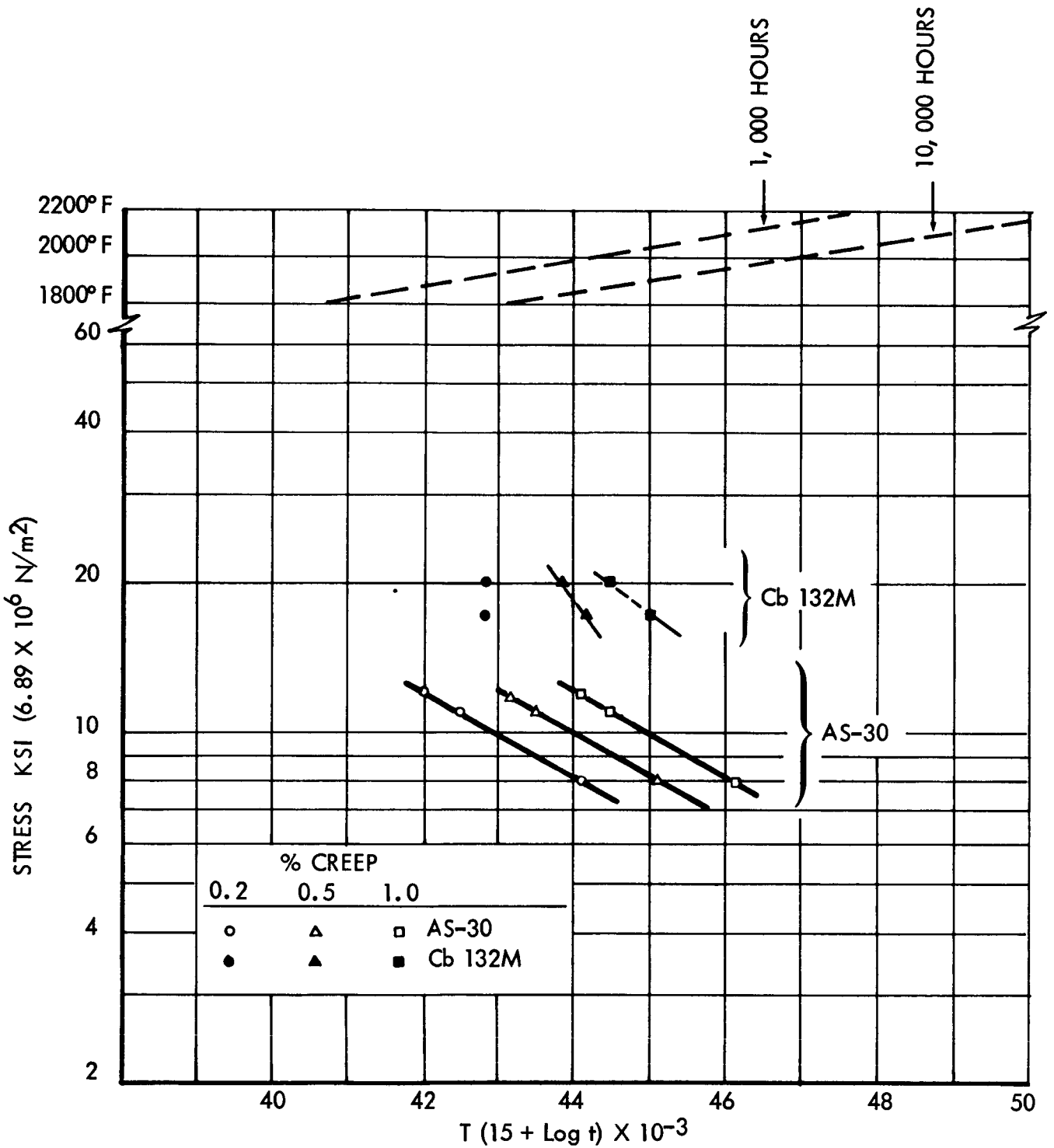


FIGURE 9. LARSON MILLER PLOT OF CREEP DATA FOR AS-30 AND Cb 132M ALLOYS

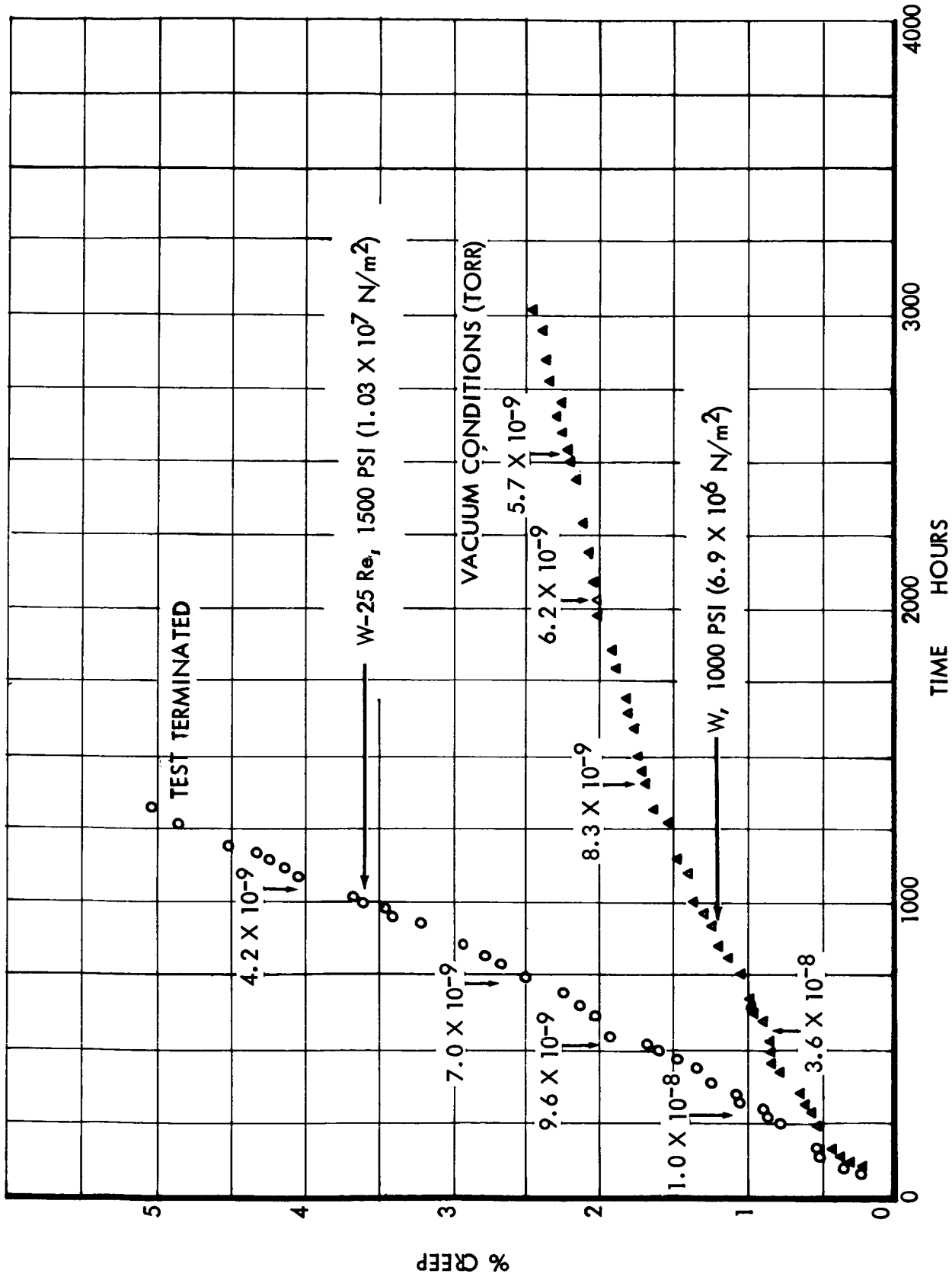
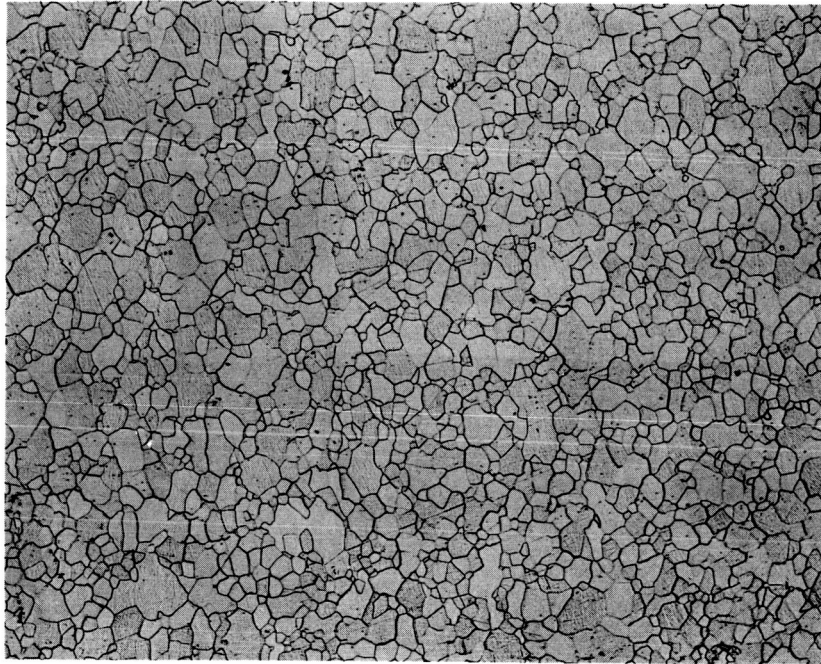


FIGURE 10. CREEP DATA FOR ARC CAST TUNGSTEN AND TUNGSTEN - 25% RHENIUM, RECRYSTALLIZED AT 3200° F (1760° C), 1 HOUR, TESTED AT 3200° F (1760° C) IN VACUUM ENVIRONMENT



100X

FIGURE 11, STRUCTURE OF SYLVANIA A ALLOY AFTER RECRYSTALLIZATION AT 3200° F (1760° C) FOR 1 HOUR, AND TESTING AT 3200° F (1760° C) FOR 26 HOURS, HARDNESS DPH 438, ETCHANT: 15% HF, 15% H₂SO₄, 8% HNO₃, 62% H₂O

APPENDIX I

Processing History of Cb132M

Universal Cyclops Heat No. KC 1454

1. Electron-beam melted stock with carbon added by Universal Cyclops, electrode diameter 2-1/2" mold size 3-7/8".
2. Vacuum arc melted, then canned in Mo-0.5Ti.
3. Extruded at 3130°F to 1-1/2" diameter.
4. Cross-rolled from 2400°F in three passes yielding reductions of 20, 10, and 10%. Plate reheated between each pass. Final thickness 3/4".
5. Jacket removed, shipped in as-rolled structure.

APPENDIX II

Creep Test Data

TABLE A-1

Creep Test Data, TZC Plate, Recrystallized at 3092°F (1700°C)

For 1 Hour, Tested At 1856°F (1013°C), 25,000 psi ($1.72 \times 10^8 \text{ N/m}^2$)

<u>Time</u> <u>(Minutes)</u>	<u>Length Change</u> <u>ΔL (in.)</u> <u>2" G.L.</u>	<u>Creep</u> <u>%</u>	<u>Pressure</u> <u>Torr</u>
1	- .00005	-.0025	4×10^{-9}
2	-0-	-0-	
3	-.00005	-.0025	
4	.00005	.0025	
5	.00005	.0025	
6	.00010	.0005	
7	.00005	.0025	
8	-0-	-0-	
9	-0-	-0-	
10	.00005	.0025	
15	-.00005	-.0025	
20	.00015	.0075	
25	.00015	.0075	
30	.00025	.012	
60	.00065	.032	

TABLE A-I (Cont'd.)

Creep Test Data, TZC Plate, Recrystallized at 3092°F (1700°C)
For 1 Hour, Tested At 1856°F(1013°C), 25,000 psi (1.72 X 10⁸ N/m²)

Time (Hours)	Length Change ΔL (in.) 2" G.L.	Creep %	Pressure Torr	Time (Hours)	Length Change ΔL (in.) 2" G.L.	Creep %	Pressure Torr
1	.00065	.032	1.5 X 10 ⁻⁸	1516.4	.0018	.090	2.6 X 10 ⁻⁹
19.3	.00085	.042	1.4 X 10 ⁻⁸	1564.4	.00185	.092	3.1 X 10 ⁻⁹
42.1	.00095	.047	1.3 X 10 ⁻⁸	1636.4	.00195	.097	2.5 X 10 ⁻⁹
68.2	.00095	.047	1.1 X 10 ⁻⁸	1689.1	.00205	.102	2.2 X 10 ⁻⁹
138.4	.0009	.045	5.8 X 10 ⁻⁹	1732.4	.00195	.097	2.8 X 10 ⁻⁹
162.8	.00085	.042	6.6 X 10 ⁻⁹	1804.3	.0020	.100	2.0 X 10 ⁻⁹
186.0	.00085	.042	6.8 X 10 ⁻⁹	1876.7	.00215	.107	2.0 X 10 ⁻⁹
210.3	.0008	.040	5.8 X 10 ⁻⁹	1972.6	.00210	.105	2.3 X 10 ⁻⁹
306.2	.00075	.037	5.2 X 10 ⁻⁹	2044.4	.00225	.112	9.6 X 10 ⁻⁹
330.2	.0009	.045	4.4 X 10 ⁻⁹				
354.2	.00085	.042	3.4 X 10 ⁻⁹				
402.4	.00095	.047	3.6 X 10 ⁻⁹				
460.7	.00105	.052	2.5 X 10 ⁻⁹				
508.5	.00125	.062	3.4 X 10 ⁻⁹				
556.8	.00105	.052	3.2 X 10 ⁻⁹				
628.9	.00105	.052	3.0 X 10 ⁻⁹				
681.7	.00115	.057	--				
725.6	.00125	.062	3.1 X 10 ⁻⁹				
796.4	.0013	.065	2.0 X 10 ⁻⁹				
844.8	.00145	.072	2.2 X 10 ⁻⁹				
892.4	.00145	.072	1.6 X 10 ⁻⁹				
964.6	.0014	.070	2.8 X 10 ⁻⁹				
1012.6	.00155	.077	2.7 X 10 ⁻⁹				
1060.7	.0017	.085	2.6 X 10 ⁻⁹				
1132.3	.00165	.082	2.4 X 10 ⁻⁹				
1186.9	.00165	.082	2.0 X 10 ⁻⁹				
1228.6	.0017	.085	1.8 X 10 ⁻⁹				
1277.8	.0017	.085	2.2 X 10 ⁻⁹				
1324.4	.00165	.082	2.3 X 10 ⁻⁹				
1349.2	.00175	.087	1.4 X 10 ⁻⁹				
1396.3	.00185	.092	1.8 X 10 ⁻⁹				
1468.3	.00185	.092	2.5 X 10 ⁻⁹				

Test in Progress

TABLE A-II

Creep Test Data, TZC Plate, Recrystallized at 3092°F (1700°C)

For 1 Hour, Tested At 2056°F (1124°C), 25,000 psi ($1.72 \times 10^8 \text{ N/m}^2$)

<u>Time (Minutes)</u>	<u>Length Change ΔL (in.) 2" G.L.</u>	<u>Creep %</u>	<u>Pressure Torr</u>
1	.00010	.005	7.0×10^{-8}
2	.00020	.010	
3	.00030	.015	
4	.00050	.025	
5	.00055	.027	
6	.00065	.032	
7	.00085	.043	
8	.00095	.047	
9	.00105	.052	
10	.00120	.060	
12	.00130	.065	6.9×10^{-8}
13	.00140	.070	
14	.00150	.075	
15	.00160	.080	
20	.00165	.082	
25	.00170	.085	6.9×10^{-8}
30	.00170	.085	
40	.00175	.087	
45	.00175	.087	6.8×10^{-8}
60	.00180	.090	
90	.00180	.090	6.7×10^{-8}

TABLE A-II

Creep Test Data, TZC Plate, Recrystallized at 3092°F (1700°C) for 1 Hour,
Tested at 2056°F (1124°C), 19,000 psi (1.3. X 10⁻⁸ N/m²)

Time (Hours)	Length Change ΔL (in.) 2" G.L.	Creep %	Pressure Torr	Time (Hours)	Length Change ΔL (in.) 2" G.L.	Creep %	Pressure Torr
15.5	.0018	.090	3.5 X 10 ⁻⁸	1581.8	.00245	.122	7.5 X 10 ⁻¹⁰
87.1	.0018	.090	1.4 X 10 ⁻⁸	1654.2	.00245	.122	1.2 X 10 ⁻⁹
111.2	.0010	.050	9.8 X 10 ⁻⁹	1750.2	.0024	.120	1.3 X 10 ⁻⁹
133.4	.0014	.070	7.0 X 10 ⁻⁹	1822.1	.00235	.117	7.0 X 10 ⁻¹⁰
159.0	.00135	.067	3.0 X 10 ⁻⁹				
181.6	.0013	.065	--				
239.9	.00135	.067	4.2 X 10 ⁻⁹				
263.7	.0013	.065	5.1 X 10 ⁻⁹				
287.7	.0015	.075	4.5 X 10 ⁻⁹				
309.9	.0014	.070	3.8 X 10 ⁻⁹				
334.3	.0015	.075	3.2 X 10 ⁻⁹				
406.5	.00145	.072	3.5 X 10 ⁻⁹				
459.3	.00155	.077	--				
503.2	.0015	.075	2.2 X 10 ⁻⁹				
573.9	.00175	.087	1.2 X 10 ⁻⁹				
622.5	.00175	.087	1.1 X 10 ⁻⁹				
669.9	.0018	.090	3.8 X 10 ⁻⁹				
742.3	.00185	.092	2.8 X 10 ⁻⁹				
790.2	.0019	.095	2.8 X 10 ⁻⁹				
838.3	.00185	.092	1.8 X 10 ⁻⁹				
909.9	.00195	.097	3.2 X 10 ⁻⁹				
964.8	.00205	.102	2.6 X 10 ⁻⁹				
1006.2	.00210	.105	2.6 X 10 ⁻⁹				
1055.3	.00215	.107	2.7 X 10 ⁻⁹				
1102.0	.0022	.110	2.9 X 10 ⁻⁹				
1126.8	.0022	.110	1.7 X 10 ⁻⁹				
1173.9	.0022	.110	1.0 X 10 ⁻⁹				
12.45.9	.00215	.107	4.2 X 10 ⁻⁹				
1294.0	.00225	.112	2.1 X 10 ⁻⁹				
1342.0	.00235	.117	2.1 X 10 ⁻¹⁰				
1414.1	.00235	.117	1.4 X 10 ⁻⁹				
1466.7	.00235	.117	2.5 X 10 ⁻⁹				
1509.9	.00225	.112	2.0 X 10 ⁻⁹				

Test in Progress

TABLE A-III

Creep Test Data, TZC Plate, Recrystallized at 3092°F(1700°C)

For 1 Hour, Tested at 2000°F (1093°C), 20,000 psi ($1.38 \times 10^{-8} \text{N/m}^2$)

<u>Time</u> <u>(Minutes)</u>	<u>Length Change</u> <u>Δ L (in.)</u> <u>2" G.L.</u>	<u>Creep</u> <u>%</u>	<u>Pressure</u> <u>Torr</u>
1	-0-	-0-	1.2×10^{-9}
2	-.00020	-.010	
3	-.00040	-.020	
4	-.00030	-.015	
5	-.00030	-.015	
10	-.00005	-.002	
15	.00005	.002	
20	.00005	.002	
25	.00010	.005	
30	.00010	.005	
60	.00005	.002	
90	-.00005	-.002	

TABLE A-III

Creep Test Data, TZC Plate, Recrystallized at 3092°F(1700°C)
For 1 Hour, Tested at 2000°F (1093°C), 20,000 psi (1.38 X 10⁻⁸N/m²)

Time (Hours)	Length Change Δ L (in.) 2" G.L.	Creep %	Pressure Torr	Time (Hours)	Length Change Δ L (in.) 2" G.L.	Creep %	Pressure Torr
17.2	.0004	.020	2.6 X 10 ⁻⁹	1600.2	.0026	.130	2.6 X 10 ⁻⁹
41.3	.0006	.030	2.2 X 10 ⁻⁹	1672.4	.00265	.132	5.5 X 10 ⁻⁹
65.2	.0008	.040	2.2 X 10 ⁻⁹	1720.4	.0027	.135	3.8 X 10 ⁻⁹
89.2	.0011	.055	2.0 X 10 ⁻⁹	1768.5	.0028	.140	4.6 X 10 ⁻⁹
161.3	.00105	.052	1.3 X 10 ⁻⁹	1840.1	.0030	.150	4.4 X 10 ⁻⁹
209.1	.0012	.060	1.7 X 10 ⁻⁹	1936.3	.00310	.155	3.8 X 10 ⁻⁹
233.2	.0012	.060	1.4 X 10 ⁻⁹	1985.6	.00305	.152	3.8 X 10 ⁻⁹
257.3	.00125	.062	1.3 X 10 ⁻⁹	2035.2	.0032	.160	4.0 X 10 ⁻⁹
329.2	.00135	.067	2.0 X 10 ⁻⁹	2104.1	.0033	.165	3.8 X 10 ⁻⁹
355.9	.0014	.070	3.2 X 10 ⁻⁹	2176.1	.0034	.170	3.5 X 10 ⁻⁹
377.0	.0014	.070	3.4 X 10 ⁻⁹	2248.4	.00365	.182	4.2 X 10 ⁻⁹
401.1	.0014	.070	2.4 X 10 ⁻⁹	2272.2	.00355	.177	7.5 X 10 ⁻⁹
425.0	.00145	.072	1.5 X 10 ⁻⁹	2344.2	.0037	.185	2.4 X 10 ⁻⁹
497.2	.00165	.082	1.9 X 10 ⁻⁹	2396.9	.00375	.187	4.6 X 10 ⁻⁹
521.4	.00165	.082	3.1 X 10 ⁻⁹	2440.2	.00385	.187	4.4 X 10 ⁻⁹
569.2	.00165	.082	4.5 X 10 ⁻⁹	2512.0	.00395	.197	2.7 X 10 ⁻⁹
665.2	.0016	.080	5.0 X 10 ⁻⁹	2584.4	.00395	.197	2.9 X 10 ⁻⁹
713.3	.00155	.077	4.6 X 10 ⁻⁹	2680.2	.00395	.192	7.4 X 10 ⁻⁹
762.8	.00165	.082	--	2752.2	.0040	.200	5.4 X 10 ⁻⁹
833.4	.00170	.085	1.5 X 10 ⁻⁸				
881.0	.0018	.090	6.1 X 10 ⁻⁹				
905.2	.0017	.085	5.8 X 10 ⁻⁹				
1001.1	.0018	.090	3.9 X 10 ⁻⁹				
1049.2	.0018	.090	6.4 X 10 ⁻⁹				
1168.4	.0019	.095	4.2 X 10 ⁻⁹				
1216.2	.00195	.097	7.5 X 10 ⁻⁹				
1264.3	.0019	.095	7.0 X 10 ⁻⁹				
1336.7	.00205	.102	7.5 X 10 ⁻⁹				
1389.5	.00245	.122	--				
1433.4	.0025	.127	1.3 X 10 ⁻⁸				
1552.3	.00265	.132	1.2 X 10 ⁻⁸				

Test in Progress

TABLE A-IV

CREEP TEST DATA, TZC PLATE, RECRYSTALLIZED AT 3092°F (1700°C) FOR 1 HOUR, TESTED AT 2200°F (1204°C), 18,000 PSI (1.24×10^8 N/m²)

Time (Minutes)	Length Change Δ L (in) (2" G.L.)	Creep (%)	Pressure (Torr)	Time (Hours)	Length Change Δ L (in) (2" G.L.)	Creep (%)	Pressure (Torr)
1	-.00005	-.0025	3×10^{-9}	64.3	.00110	.055	4.1×10^{-9}
2	-0-	-0-		88.4	.00120	.060	3.2×10^{-9}
3	-0-	-0-		112.5	.00140	.070	2.7×10^{-9}
4	-0-	-0-		136.4	.00165	.082	3.4×10^{-9}
5	-0-	-0-		160.4	.00215	.107	2.0×10^{-9}
10	.00005	.0025		232.5	.00255	.127	2.7×10^{-9}
20	.00010	.005		256.9	.00270	.135	1.8×10^{-9}
30	.00005	.0025		280.4	.00280	.140	1.8×10^{-9}
40	.00010	.005		304.3	.00310	.155	9.6×10^{-10}
60	.00005	.0025		328.5	.00325	.162	2.0×10^{-9}
				400.4	.00365	.182	1.7×10^{-9}
				427.1	.00390	.195	5.5×10^{-10}
				448.2	.00510	.255	1.8×10^{-9}
				472.3	.00580	.290	1.6×10^{-9}
				496.3	.00610	.305	1.4×10^{-9}
				568.4	.00660	.330	1.6×10^{-9}
				592.7	.00670	.335	1.2×10^{-9}
				616.7	.00670	.335	1.6×10^{-9}
				640.4	.00685	.342	1.4×10^{-9}
				664.4	.00715	.357	1.4×10^{-9}
				736.4	.00760	.380	1.7×10^{-9}
				760.4	.00740	.345	6.6×10^{-10}
				784.5	.00795	.397	1.4×10^{-9}
				808.3	.0080	.400	1.3×10^{-9}
				832.6	.0081	.405	----
				904.6	.0087	.435	1.2×10^{-9}
				929.4	.00875	.437	1.8×10^{-9}
				952.3	.00885	.442	1.4×10^{-9}
				976.5	.00895	.447	1.3×10^{-9}
				1072.3	.00980	.490	1.1×10^{-9}
				1096.5	.0100	.500	1.1×10^{-9}
				1120.4	.0101	.505	1.0×10^{-9}
				1147.6	.0102	.516	1.1×10^{-9}
				1168.5	.0103	.515	----
				1239.6	.0106	.530	1.5×10^{-9}
				1263.4	.0109	.545	1.0×10^{-9}
				1287.4	.01105	.552	9.5×10^{-10}
				1311.3	.01130	.565	1.0×10^{-9}
				1335.5	.01140	.570	1.2×10^{-9}

TABLE A-IV (Cont.)

CREEP TEST DATA, TZC PLATE, RECRYSTALLIZED AT 3092°F (1700°C) FOR 1 HOUR,
TESTED AT 2200°F (1204°C), 18,000 PSI ($1.24 \times 10^8 \text{N/m}^2$)

<u>Time</u> <u>(Hours)</u>	<u>Length Change</u> <u>ΔL(in.)</u> <u>2" G.L.</u>	<u>Creep</u> <u>(%)</u>	<u>Pressure</u> <u>(Torr)</u>
1407.9	.01155	.577	-
1431.4	.01190	.595	-
1460.7	.01250	.625	-
1479.4	.01285	.642	7.7×10^{-10}
1504.6	.01295	.647	8.2×10^{-10}
1575.4	.01305	.652	7.8×10^{-10}
1599.9	.01320	.660	8.0×10^{-10}
1623.5	.01385	.692	1.6×10^{-9}
1647.4	.01395	.697	8.7×10^{-10}
1671.4	.01410	.705	1.1×10^{-9}
1743.7	.01470	.735	9.7×10^{-10}
1767.4	.01720	.860	1.8×10^{-9}
1791.5	.01755	.877	1.2×10^{-9}
1815.6	.01795	.897	8.5×10^{-10}
1839.7	.01805	.902	8.0×10^{-10}
1911.3	.01855	.927	1.0×10^{-9}
1965.8	.01915	.957	1.2×10^{-9}
1984.1	.01935	.967	1.3×10^{-9}
2007.5	.01960	.980	1.1×10^{-9}
2056.9	.02005	1.000	1.0×10^{-9}
2103.4	.02100	1.050	9.4×10^{-10}
2128.2	.02120	1.060	1.3×10^{-10}

Test Terminated

TABLE A-V

Creep Test Data, TZC Plate, Recrystallized at 3092°F(1700°C) for 1 Hour,

Tested at 2200°F (1204°C), 17,000 psi (1.17×10^8 N/m²)

<u>Time</u> <u>(Minutes)</u>	<u>Length Change</u> <u>ΔL (in.)</u> <u>2" G.L.</u>	<u>Creep</u> <u>%</u>	<u>Pressure</u> <u>Torr</u>
1	-0-	-0-	5.7×10^{-9}
2	-.00020	-.010	
3	-.00030	-.015	
4	-.00020	-.010	
5	-.00020	-.010	
6	-.00015	-.007	
7	-.00015	-.007	
8	-.00015	-.007	
9	-.00005	-.002	
10	-.00015	-.007	
15	-.00015	-.007	
20	-.00015	-.007	
60	-.00015	-.007	

TABLE A-V

Creep Test Data, TZC Plate, Recrystallized at 3092°F (1700°C) for 1 Hour,

Tested at 2200°F (1204°C), 17,000 psi (1.17 X 10⁸ N/m²)

Time (Hours)	Length Change ΔL (in.) 2" G.L.	Creep %	Pressure Torr	Time (Hours)	Length Change ΔL (in.) 2" G.L.	Creep %	Pressure Torr
85.6	.00165	.082	2.8 x 10 ⁻⁹	1272.1	.00600	.300	8.8 x 10 ⁻¹⁰
108.9	.00160	.080	2.4 x 10 ⁻⁹	1295.3	.00615	.307	1.3 x 10 ⁻⁹
133.1	.00180	.090	2.1 x 10 ⁻⁹	1319.2	.00620	.310	7.9 x 10 ⁻¹⁰
229.1	.00245	.122	1.6 x 10 ⁻⁹	1391.2	.00690	.345	9.2 x 10 ⁻¹⁰
254.0	.00240	.120	2.2 x 10 ⁻⁹	1439.3	.00695	.347	4.6 x 10 ⁻¹⁰
277.0	.00260	.130	3.2 x 10 ⁻⁹	1487.3	.00690	.345	7.2 x 10 ⁻¹⁰
301.5	.00265	.132	1.4 x 10 ⁻⁹	1559.2	.00690	.345	4.9 x 10 ⁻⁹
325.2	.00265	.132	--	1612.0	.00705	.352	5.9 x 10 ⁻¹⁰
383.5	.00300	.150	1.5 x 10 ⁻⁹	1655.2	.00730	.365	5.0 x 10 ⁻¹⁰
407.3	.00325	.162	2.6 x 10 ⁻⁹	1727.1	.00785	.392	7.4 x 10 ⁻¹⁰
431.4	.00325	.162	2.4 x 10 ⁻⁹	1799.6	.00800	.400	5.6 x 10 ⁻¹⁰
455.2	.00300	.150	1.2 x 10 ⁻⁹	1895.5	.00820	.410	4.1 x 10 ⁻¹⁰
479.6	.00315	.157	3.2 x 10 ⁻⁹	1967.2	.00850	.425	4.5 x 10 ⁻¹⁰
551.8	.00310	.155	1.4 x 10 ⁻⁹				
575.5	.00320	.160	1.2 x 10 ⁻⁹				
604.6	.00350	.175	--				
623.4	.00370	.185	1.7 x 10 ⁻⁹				
648.5	.00380	.190	1.6 x 10 ⁻⁹				
719.2	.00390	.195	5.0 x 10 ⁻¹⁰				
743.7	.00390	.195	1.6 x 10 ⁻⁹				
767.6	.00395	.197	2.6 x 10 ⁻⁹				
791.2	.00410	.205	8.8 x 10 ⁻¹⁰				
815.2	.00410	.205	8.8 x 10 ⁻¹⁰				
887.2	.00430	.215	9.2 x 10 ⁻¹⁰				
911.2	.00465	.232	2.3 x 10 ⁻¹⁰				
935.5	.00475	.237	9.2 x 10 ⁻¹⁰				
959.4	.00475	.237	8.2 x 10 ⁻¹⁰				
983.5	.00480	.240	2.8 x 10 ⁻¹⁰				
1055.2	.00530	.265	1.0 x 10 ⁻⁹				
1109.8	.00550	.275	9.6 x 10 ⁻¹⁰				
1128.1	.00550	.275	9.3 x 10 ⁻¹⁰				
1151.5	.00565	.282	8.9 x 10 ⁻¹⁰				
1200.6	.00580	.290	1.4 x 10 ⁻⁹				
1247.2	.00590	.295	1.1 x 10 ⁻⁹				

TABLE A-VI

CREEP TEST DATE, STRESS-RELIEVED TZM FORGED DISC, TESTED AT
 2000°F (1093°C), 10,000 PSI ($6.89 \times 10^7 \text{N/m}^2$)

Time (Minutes)	Length Change L (in) (2" G. L.)	Creep (%)	Pressure (Torr)	Time (Hrs.)	Length Change Δ L (in) (2" G.L.)	Creep (%)	Pressure (Torr)
1	-.00030	-.015	1.6×10^{-7}	352.3	.00105	.0525	1.9×10^{-9}
2	-.00015	-.0075		376.6	.00105	.0525	1.3×10^{-9}
3	-.00015	-.0075		400.8	.00110	.055	2.1×10^{-9}
4	-.00015	-.0075		457.5	.00130	.065	1.3×10^{-9}
5	-.00005	-.0025		472.6	.00135	.0675	1.2×10^{-9}
6	.00010	.005		497.0	.00140	.070	1.2×10^{-9}
7	.00005	.0025		520.2	.00145	.0725	1.2×10^{-9}
8	.0000	.000		544.1	.00145	.0725	1.2×10^{-9}
9	.00010	.005		568.2	.00150	.075	1.2×10^{-9}
10	.00005	.0025		640.2	.00155	.0775	1.5×10^{-9}
15	.00005	.0025		664.3	.00170	.085	9.2×10^{-10}
20	.00010	.005		712.3	.00175	.0875	7.4×10^{-10}
25	.00005	.0025		736.3	.00170	.085	7.6×10^{-10}
30	.00000	.0000		810.2	.00175	.0875	1.3×10^{-9}
45	.00010	.005		832.2	.00185	.0925	9.0×10^{-10}
60	.00015	.0075		856.1	.0018	.090	9.2×10^{-10}
75	.00005	.0025		880.1	.0020	.100	7.5×10^{-10}
90	.00010	.005		904.0	.00205	.1025	7.7×10^{-10}
(Hours)				982.8	.00210	.105	8.1×10^{-10}
20.0	-.00005	-.0025	6.7×10^{-8}	1000.2	.00210	.105	7.6×10^{-10}
74.7	.00030	.015	1.0×10^{-8}	1024.2	.00210	.105	8.2×10^{-10}
125.7	.00100	.05	1.4×10^{-8}	1048.3	.00220	.110	8.0×10^{-10}
136.5	.00080	.04	1.0×10^{-8}	1072.1	.00220	.110	1.3×10^{-9}
160.3	.00085	.0425	5.7×10^{-9}	1144.0	.00230	.115	6.9×10^{-10}
184.4	.00085	.0425	4.4×10^{-9}	1168.3	.00235	.1175	6.9×10^{-10}
208.5	.00090	.045	4.0×10^{-9}	1192.2	.00240	.120	6.6×10^{-10}
232.2	.00090	.045	3.4×10^{-9}	1216.4	.00250	.125	6.4×10^{-10}
304.4	.00100	.05	2.2×10^{-9}	1240.2	.00250	.125	5.8×10^{-10}
328.3	.00100	.05	2.0×10^{-9}	1336.2	.00250	.125	5.9×10^{-10}
1360.3	.00250	.125	5.8×10^{-10}				
1384.3	.00250	.125	5.2×10^{-10}				
1408.5	.00250	.125	4.4×10^{-10}				
1480.3	.00260	.13	4.6×10^{-10}				
1552.2	.00270	.135	4.6×10^{-10}				
1648.3	.00320	.16	4.0×10^{-10}				
1696.4	.00320	.16	3.8×10^{-10}				
1720.6	.00320	.16	4.4×10^{-10}				
1816.4	.00320	.16	5.7×10^{-10}				
1864.2	.00315	.157	3.8×10^{-10}				
1912.3	.00325	.162	4.0×10^{-10}				

TABLE VI - Cont'd

<u>Time (Hours)</u>	<u>Length Change, ΔL (in)</u> (2" G.L.)	<u>Creep (%)</u>	<u>Pressure</u> (Torr)
1984.3	.00330	.165	2.6×10^{-10}
2032.2	.00335	.167	3.6×10^{-10}
2080.1	.00340	.170	3.1×10^{-10}
2152.3	.00340	.170	2.8×10^{-10}
2200.6	.00325	.167	2.3×10^{-10}
2248.4	.00340	.170	1.6×10^{-10}
2320.4	.00350	.175	2.7×10^{-10}
2369.4	.00345	.172	2.0×10^{-10}
2418.3	.00355	.177	9.2×10^{-11}
2488.4	.00345	.172	4.0×10^{-10}
2536.1	.00350	.175	1.7×10^{-10}
2560.3	.00345	.172	2.6×10^{-10}
2656.3	.00355	.177	2.6×10^{-10}
2704.3	.00350	.175	---
2752.4	.00350	.177	---
2823.5	.00355	.177	2.5×10^{-10}
2871.3	.00365	.182	1.1×10^{-11}
2919.5	.00375	.187	1.7×10^{-10}
2991.7	.00380	.190	7.2×10^{-11}
3044.5	.00380	.190	---
3088.4	.00380	.190	1.8×10^{-11}
3159.2	.00385	.192	1.6×10^{-11}
3231.2	.00390	.195	1.4×10^{-10}
3327.5	.00385	.192	1.2×10^{-10}
3399.4	.00395	.197	2.0×10^{-11}
3495.1	.00400	.200	8.2×10^{-12}
3568.1	.00400	.200	9.5×10^{-11}
3640.6	.00410	.205	3.4×10^{-11}
3687.6	.00410	.205	1.9×10^{-11}
3735.3	.00415	.207	1.0×10^{-11}
3831.1	.00420	.210	1.2×10^{-11}
3903.5	.00425	.212	2.1×10^{-11}
3999.2	.00440	.220	1.0×10^{-11}
4071.3	.00450	.225	2.1×10^{-11}

TABLE A-VII

CREEP TEST DATA, TZM FORGED DISC, ANNEALED AT 2850°F (1566°C), FOR 1 HOUR,

TESTED AT 2000°F (1093°C) 10,000 PSI (6.89 X 10⁷ N/m²)

Time (Minutes)	Length Change		Creep Pressure Torr	Time (Hours)	Length Change		Creep %	Pressure Torr
	ΔL (in.) 2" G. L.	Creep %			L (in.) 2" G. L.	Creep %		
1	.00030	.015	6.0×10^{-10}	16.6	.00040	.020	6.2×10^{-9}	
2	.00045	.0225		40.7	.00055	.0275	3.1×10^{-9}	
3	.00040	.020		114.5	.00095	.0475	5.1×10^{-9}	
4	.00030	.015		136.5	.00105	.0525	3.0×10^{-9}	
5	.00025	.0125		160.4	.00120	.060	3.4×10^{-9}	
6	.00015	.0075		184.4	.00130	.065	2.4×10^{-9}	
7	.00015	.0075		208.3	.00140	.070	2.3×10^{-9}	
8	.00010	.005		287.5	.00180	.090	2.2×10^{-9}	
9	.00020	.010		304.7	.00235	.1175	1.8×10^{-9}	
10	.00030	.015		328.7	.00505	.2525	1.6×10^{-9}	
11	.00030	.015		336.5	.00485	.2425		
12	.00025	.0125		352.6	.00515	.2575	1.6×10^{-9}	
13	.00030	.015		374.4	.00525	.2625	2.2×10^{-9}	
14	.00030	.015		448.3	.00525	.2625	1.4×10^{-9}	
15	.00035	.0175		472.7	.00525	.2625	1.0×10^{-9}	
20	.00045	.0225		496.6	.00530	.265	1.0×10^{-9}	
25	.00050	.025		520.8	.00535	.2675	1.6×10^{-9}	
30	.00055	.0275		544.6	.00565	.2825	1.2×10^{-9}	
35	.00050	.025		616.6	.00560	.280	6.2×10^{-10}	
40	.00050	.025		640.5	.00555	.2775	7.2×10^{-10}	
45	.00050	.025		664.6	.00560	.280	7.2×10^{-10}	
60	.00050	.025		688.7	.00560	.280	7.3×10^{-10}	
				712.8	.00565	.2825	1.3×10^{-9}	
				784.6	.00560	.280	5.6×10^{-10}	
				808.7	.00555	.277	5.5×10^{-10}	
				832.6	.00565	.282	5.8×10^{-10}	
				856.6	.00575	.287	5.8×10^{-10}	
				880.6	.00580	.290	6.6×10^{-10}	
				952.6	.00480	.240	4.3×10^{-10}	
				977.0	.00485	.242	1.4×10^{-9}	
				1000.7	.00485	.242	4.2×10^{-10}	
				1025.0	.00505	.252	7.2×10^{-10}	
				1049.3	.00440	.220	4.6×10^{-10}	
				1120.8	.00465	.232	3.2×10^{-10}	
				1145.2	.00485	.242	4.3×10^{-10}	
				1168.5	.00505	.252	5.0×10^{-10}	
				1192.7	.00515	.257	8.0×10^{-10}	
				1216.6	.00515	.257	3.0×10^{-10}	
				1288.6	.00510	.255	1.6×10^{-10}	
				1315.5	.00525	.262	2.2×10^{-10}	
				1336.5	.00525	.262	1.5×10^{-10}	
				1360.7	.00520	.260	1.6×10^{-10}	
				1384.5	.00525	.262	2.1×10^{-10}	

TABLE A-VII (Continued)

Time (Hours)	Length Change ΔL (in.) 2" G.L.	Creep %	Pressure Torr
1456.6	.00540	.270	4.4×10^{-10}
1480.9	.00520	.260	1.6×10^{-9}
1505.0	.00505	.252	9.7×10^{-11}
1528.5	.00510	.255	1.3×10^{-9}
1552.8	.00520	.260	1.3×10^{-9}
1649.0	.00530	.265	9.3×10^{-10}
1696.6	.00535	.267	--
1722.7	.00530	.265	--
1792.8	.00530	.265	3.2×10^{-12}
1840.7	.00530	.265	8.8×10^{-11}
1840.7	.00530	.265	8.8×10^{-11}
1960.8	.00540	.270	9.6×10^{-10}
1984.8	.00545	.272	3.6×10^{-10}
2008.6	.00545	.272	1.5×10^{-9}
2056.9	.00550	.275	--
2115.2	.00555	.277	3.2×10^{-10}
2163.0	.00550	.275	8.0×10^{-10}
2211.2	.00545	.272	1.4×10^{-9}
2283.4	.00560	.280	1.1×10^{-9}
2336.3	.00560	.280	--
2380.1	.00550	.275	1.4×10^{-11}
2450.9	.00555	.277	1.4×10^{-11}
2523.0	.00570	.285	1.0×10^{-9}
2619.2	.00570	.285	8.6×10^{-10}
2691.0	.00610	.305	--
2786.8	.00635	.317	2.5×10^{-10}
2859.8	.00640	.320	8.8×10^{-11}
2932.3	.00640	.320	1.4×10^{-10}
2978.9	.00640	.320	2.2×10^{-10}
3027.0	.00580	.290	1.2×10^{-10}
3122.9	.00630	.315	2.6×10^{-10}
3195.2	.00605	.302	2.8×10^{-10}
3363.0	.00650	.325	1.2×10^{-9}
3458.8	.00645	.322	2.4×10^{-10}
3531.2	.00655	.327	9.2×10^{-10}
3627.1	.00640	.320	2.4×10^{-11}
3699.0	.00655	.327	4.2×10^{-10}

Table A-VIII

Creep Test Data for TZM Material Received from NASA Tested at
1800°F (982°C), 24,000psi (1.65 x 10⁸N/m²)

Time (Hours)	Length Change		Creep (%)	Pressure (Torr)
	Δ L (in.) 2" G. L.			
66.9	.00010	-	-	3.7 x 10 ⁻⁸
88.5	.00005	-	-	3.7 x 10 ⁻⁸
117.1	.00005	-	-	2.3 x 10 ⁻⁸
136.4	0.00000	-	-	1.6 x 10 ⁻⁸
160.4	.00005	-	-	1.6 x 10 ⁻⁸
232.2	.00020	.010	.010	9.8 x 10 ⁻⁹
256.7	.00015	.007	.007	8.8 x 10 ⁻⁹
280.6	.00020	.010	.010	5.6 x 10 ⁻⁹
304.5	.00020	.010	.010	6.7 x 10 ⁻⁹
329.8	.00030	.015	.015	6.1 x 10 ⁻⁹
400.4	.00025	.012	.012	4.2 x 10 ⁻⁹
424.4	.00030	.015	.015	3.7 x 10 ⁻⁹
448.7	.00035	.017	.017	3.4 x 10 ⁻⁹
472.4	.00040	.020	.020	2.6 x 10 ⁻⁹
496.5	.00040	.020	.020	-

TABLE A-VIII

Creep Test Data for TZM Material Received from NASA Tested at 1856°F

(1013°C), 24,000 psi ($1.65 \times 10^8 \text{ N/m}^2$)

<u>Time</u> <u>(Minutes)</u>	<u>Length Change</u> <u>ΔL (in.)</u> <u>2" G. L.</u>	<u>Creep</u> <u>%</u>	<u>Pressure</u> <u>Torr</u>
1	-.00010	-.005	3.2×10^{-7}
2	-.00015	-.007	
3	-.00010	-.005	
4	-.00005	-.002	
5	-.00010	-.005	
6	-.00010	-.005	
7	-.00010	-.005	
8	-.00005	-.002	
9	-.00010	-.005	
10	-.00005	-.002	
15	-.00020	-.010	
30	-.00020	-.010	
60	-.00015	-.007	

TABLE A-IX

CREEP TEST DATA FOR C6132M, ANNEALED 3092°F (1700°C) FOR ONE HOUR

TESTED AT

2056°F (1124°C), 20,000 PSI (1.38×10^8 N/m²)

<u>Time (Minutes)</u>	<u>Length Change, ΔL (in.)</u> <u>2" G.L.</u>	<u>Creep (%)</u>	<u>Pressure</u> <u>Torr</u>
1	-		
2	-0-	-0-	
3	.00005	.002	
4	-0-	-0-	
5	-0-	-0-	
6	-0-	-0-	
7	.00030	.005	
8	.00030	.015	
9	.00020	.010	
10	.00025	.012	
15	.00030	.015	
20	.00030	.015	8.2×10^{-10}
25	.00030	.015	
30	.00030	.015	
<u>Time (Hours)</u>			
64.6	.00210	.105	1.1×10^{-9}
88.4	.00285	.142	7.8×10^{-10}
117.4	.00410	.205	---
136.3	.00435	.217	8.2×10^{-10}
161.3	.00525	.262	8.8×10^{-10}
232.1	.00835	.417	5.2×10^{-10}
256.5	.00910	.455	4.2×10^{-10}
280.6	.01020	.510	4.4×10^{-10}
304.1	.01085	.542	5.5×10^{-10}
328.1	.01145	.572	4.6×10^{-10}
400.4	.01585	.792	1.8×10^{-10}
424.1	.01615	.807	3.3×10^{-10}
448.3	.01780	.890	3.3×10^{-10}
472.2	.01935	.967	4.6×10^{-10}
496.4	.02000	1.00	4.1×10^{-10}
568.0	.02340	1.17	---

TEST TERMINATED

TABLE A-X

CREEP TEST DATA FOR Gb132M, ANNEALED 3092°F (1700°C) FOR 1 HOUR

TESTED AT 2056°F (1124°C), 17,000 PSI ($1.17 \times 10^8 \text{ N/m}^2$)

<u>Time</u> <u>(Minutes)</u>	<u>Length Change</u> <u>ΔL (in.)</u> <u>2" G. L.</u>	<u>Creep</u> <u>%</u>	<u>Pressure</u> <u>Torr</u>
1	.00005	.002	8.5×10^{-10}
2	.00010	.005	
3	.00005	.002	
4	-0-	-0-	
5	.00005	.002	
6	.00010	.005	
7	.00010	.005	
8	.00015	.007	
9	.00015	.007	
10	.00015	.007	
15	.00035	.017	
20	.00055	.027	
25	.00050	.025	
30	.00050	.025	
60	.00055	.027	

Table A-X (Cont'd.)

Creep Test Data for Cbl32M, Annealed 3092°F (1700°C) For 1 Hour
Tested at 2056°F (1124°C), 17,000 psi (1.17 x 10⁸N/m²)

Time (Hours)	Length Change		Pressure (Torr)
	ΔL (in.) (2" G. L.)	Creep (%)	
19.0	.00115	.057	9.2 x 10 ⁻¹⁰
42.9	.00255	.127	8.1 x 10 ⁻¹⁰
114.9	.00415	.207	9.3 x 10 ⁻¹⁰
139.1	.00525	.262	9.3 x 10 ⁻¹⁰
163.0	.00580	.290	4.1 x 10 ⁻¹⁰
187.2	.00650	.325	7.2 x 10 ⁻¹⁰
211.0	.00665	.332	3.8 x 10 ⁻¹⁰
283.0	.00865	.432	4.7 x 10 ⁻¹⁰
307.1	.00935	.467	3.6 x 10 ⁻¹⁰
335.6	.00975	.437	4.3 x 10 ⁻¹⁰
355.0	.01055	.527	4.0 x 10 ⁻¹⁰
378.9	.01095	.547	3.8 x 10 ⁻¹⁰
450.8	.01335	.667	3.4 x 10 ⁻¹⁰
475.3	.01375	.687	5.3 x 10 ⁻¹⁰
499.1	.01405	.702	2.1 x 10 ⁻¹⁰
523.2	.01525	.763	4.6 x 10 ⁻¹⁰
549.2	.01595	.797	5.2 x 10 ⁻¹⁰
619.2	.01765	.883	4.7 x 10 ⁻¹⁰
643.0	.01910	.955	3.3 x 10 ⁻¹⁰
667.2	.01995	.997	3.8 x 10 ⁻¹⁰
691.0	.02055	1.020	3.9 x 10 ⁻¹⁰

Test Terminated

TABLE A-XI

CREEP TEST DATA, W-25%Re SHEET, TESTED AT 3200°F (1760°C),

1500 PSI ($1.03 \times 10^7 \text{N/m}^2$)

<u>Time</u> <u>(Minutes)</u>	<u>Length Change</u> <u>ΔL (in.)</u> <u>2" G. L.</u>	<u>Creep</u> <u>%</u>	<u>Pressure</u> <u>Torr</u>
5	.00005	.002	
10	.00010	.005	
15	.00010	.005	
20	.00010	.005	
30	.00010	.005	
45	.00010	.005	
60	.00010	.005	

TABLE A-XI (Cont'd.)

CREEP TEST DATA, W-25%Re SHEET, TESTED AT 3200°F (1760°C),
1500 PSI (1.03 x 10⁷N/m²)

<u>Time (Hours)</u>	<u>Length Change ΔL (inch) (2" G. L.)</u>	<u>Creep (%)</u>	<u>Pressure (Torr)</u>
10.6	.00005	0.0025	1.4 x 10 ⁻⁷
82.7	.00450	0.2250	2.1 x 10 ⁻⁸
106.6	.00700	0.3500	2.0 x 10 ⁻⁸
130.6	.00735	0.3675	1.6 x 10 ⁻⁸
154.6	.01065	0.5325	1.6 x 10 ⁻⁸
178.8	.01170	0.5850	1.4 x 10 ⁻⁸
250.6	.01535	0.7670	1.0 x 10 ⁻⁸
274.5	.01730	0.8650	9.8 x 10 ⁻⁹
298.6	.01795	0.8970	1.0 x 10 ⁻⁸
322.5	.02135	1.0670	9.6 x 10 ⁻⁹
346.7	.02195	1.0970	9.4 x 10 ⁻⁹
418.5	.02480	1.2400	8.5 x 10 ⁻⁹
422.9	.02700	1.3500	1.5 x 10 ⁻⁸
466.7	.02910	1.4550	8.4 x 10 ⁻⁹
490.7	.03225	1.6120	1.0 x 10 ⁻⁸
515.0	.03345	1.6720	9.6 x 10 ⁻⁹
586.0	.03870	1.9350	1.0 x 10 ⁻⁸
611.1	.04010	2.0050	9.2 x 10 ⁻⁹
634.6	.04140	2.0700	8.9 x 10 ⁻⁹
658.7	.04300	2.1500	1.2 x 10 ⁻⁸
682.7	.04490	2.2450	7.9 x 10 ⁻⁹
754.7	.05065	2.5320	7.0 x 10 ⁻⁹
781.3	.05385	2.6920	7.5 x 10 ⁻⁹
802.6	.05525	2.7620	7.2 x 10 ⁻⁹
826.6	.05700	2.8500	7.2 x 10 ⁻⁹
850.5	.05835	2.9170	8.3 x 10 ⁻⁹
922.6	.06480	3.2400	8.8 x 10 ⁻⁹
946.9	.06820	3.4100	1.4 x 10 ⁻⁸
970.9	.06940	3.4700	4.4 x 10 ⁻⁹
994.6	.07210	3.6050	4.8 x 10 ⁻⁹
1018.6	.07370	3.6850	5.0 x 10 ⁻⁹
1090.6	.08120	4.0600	5.9 x 10 ⁻⁹
1114.8	.08305	4.1520	9.0 x 10 ⁻⁹
1139.8	.08525	4.2520	5.8 x 10 ⁻⁹
1162.5	.08795	4.3970	6.4 x 10 ⁻⁹
1188.3	.09065	4.5320	-----
1258.9	.09770	4.8850	4.2 x 10 ⁻⁹
1283.3	.10085	5.0420	-----

Test Terminated

TABLE A-XII

CREEP TEST DATA, TUNGSTEN SHEET, TESTED AT 3200°F (1760°C)

<u>Time</u> <u>(Minutes)</u>	<u>Length Change</u> <u>ΔL (in.)</u> <u>2" G. L.</u>	<u>Creep</u> <u>%</u>	<u>Pressure</u> <u>Torr</u>
1	.00005	.002	4×10^{-8}
2	.00015	.007	
3	.00015	.007	
4	.00010	.005	
5	.00015	.007	
6	.00020	.010	
7	.00020	.010	
8	.00020	.010	
9	.00020	.010	
10	.00015	.007	
15	.00020	.010	
20	.00010	.005	
25	.00020	.010	
30	.00020	.010	
60	.00020	.010	
90	.00030	.015	

TABLE A-XII (Cont'd.)

CREEP TEST DATA, TUNGSTEN SHEET, TESTED AT 3200°F (1760°C),
1000 PSI (6.89 x 10⁶N/m²)

Time (Hours)	Length Change ΔL (inch) (2" G.L.)	Creep (%)	Pressure (Torr)
16.6	.00180	0.090	2.2 x 10 ⁻⁸
88.4	.00480	0.240	1.0 x 10 ⁻⁸
112.4	.00615	0.307	1.1 x 10 ⁻⁸
136.3	.00750	0.375	9.2 x 10 ⁻⁹
160.3	.00880	0.440	7.8 x 10 ⁻⁹
184.4	.00960	0.480	6.9 x 10 ⁻⁹
256.3	.01115	0.557	5.6 x 10 ⁻⁸
280.7	.01190	0.595	1.6 x 10 ⁻⁸
304.5	.01215	0.607	3.9 x 10 ⁻⁹
328.4	.01265	0.632	6.8 x 10 ⁻⁹
352.7	.01330	0.665	6.5 x 10 ⁻⁹
424.5	.01575	0.787	7.2 x 10 ⁻⁹
448.9	.01725	0.862	6.1 x 10 ⁻⁹
472.3	.01705	0.852	6.3 x 10 ⁻⁹
496.4	.01725	0.862	9.0 x 10 ⁻⁹
520.4	.01740	0.870	4.6 x 10 ⁻⁸
592.4	.01810	0.905	5.0 x 10 ⁻⁸
619.1	.01930	0.965	3.6 x 10 ⁻⁸
640.3	.01960	0.980	4.9 x 10 ⁻⁸
664.3	.02010	1.005	4.7 x 10 ⁻⁸
688.2	.02040	1.020	4.0 x 10 ⁻⁸
760.4	.02155	1.072	4.6 x 10 ⁻⁹
784.6	.02190	1.095	1.5 x 10 ⁻⁸
808.7	.02305	1.152	7.2 x 10 ⁻⁹
823.3	.02375	1.187	2.4 x 10 ⁻⁹
856.3	.02455	1.222	2.4 x 10 ⁻⁹
928.5	.02465	1.232	3.0 x 10 ⁻⁹
952.5	.02570	1.285	2.3 x 10 ⁻⁹
977.5	.02660	1.330	8.2 x 10 ⁻⁹
1000.3	.02715	1.357	2.4 x 10 ⁻⁹
1026.3	.02775	1.387	-----
1096.6	.02850	1.425	8.3 x 10 ⁻⁹
1121.1	.02875	1.437	8.0 x 10 ⁻⁹
1143.3	.02930	1.465	-----
1168.4	.03040	1.520	9.4 x 10 ⁻⁹
1264.3	.03120	1.560	9.2 x 10 ⁻⁹
1288.4	.03145	1.572	2.8 x 10 ⁻⁹

TABLE A-XII (Continued)

<u>Time</u> <u>(Hours)</u>	<u>Length Change</u> <u>ΔL (inch)</u> <u>(2" G.L.)</u>	<u>Creep</u> <u>(%)</u>	<u>Pressure</u> <u>(Torr)</u>
1312.4	.03210	1.655	6.7×10^{-9}
1336.9	.03265	1.632	2.4×10^{-9}
1360.5	.03300	1.650	-----
1431.6	.03345	1.672	4.6×10^{-10}
1455.4	.03430	1.715	2.4×10^{-9}
1479.4	.03445	1.723	3.2×10^{-9}
1503.2	.03455	1.727	6.8×10^{-9}
1527.5	.03460	1.730	6.6×10^{-9}
1599.8	.03525	1.762	5.3×10^{-9}
1623.3	.03550	1.775	3.0×10^{-9}
1652.7	.03630	1.815	-----
1671.4	.03665	1.832	1.8×10^{-9}
1691.6	.03690	1.845	2.0×10^{-9}
1767.3	.03745	1.872	1.8×10^{-9}
1791.8	.03810	1.905	1.7×10^{-9}
1815.4	.03825	1.912	1.7×10^{-9}
1839.3	.03850	1.925	6.0×10^{-9}
1863.3	.03865	1.932	3.2×10^{-10}
1935.6	.03910	1.955	6.2×10^{-9}
1983.5	.04010	2.005	2.5×10^{-9}
2031.7	.04040	2.020	7.3×10^{-9}
2103.2	.04100	2.050	2.2×10^{-9}
2157.7	.04135	2.067	7.4×10^{-9}
2199.5	.04180	2.090	-----
2248.8	.04205	2.102	-----
2295.3	.04260	2.130	2.3×10^{-9}
2320.2	.04275	2.137	2.8×10^{-9}
2367.3	.04325	2.162	2.1×10^{-9}
2439.2	.04370	2.185	2.2×10^{-9}
2487.4	.04420	2.210	2.0×10^{-9}
2535.3	.04465	2.232	6.6×10^{-9}
2607.3	.04555	2.277	1.4×10^{-9}
2660.1	.04620	2.310	7.0×10^{-9}
2703.3	.04570	2.285	5.6×10^{-9}
2775.2	.04710	2.352	1.7×10^{-9}
2847.5	.04770	2.385	1.6×10^{-9}
2943.6	.04850	2.425	2.0×10^{-9}
3015.4	.04940	2.470	5.0×10^{-9}

Test in Progress

EXTERNAL DISTRIBUTION

National Aeronautics and Space Administration
Washington, D. C. 20546
Attn: Walter C. Scott
Attn: James J. Lynch (RN)
Attn: George C. Deutsch (RR)

National Aeronautics and Space Administration
Scientific and Technical Information Facility
Box 5700
Bethesda, Maryland 21811

2 copies + 2 reproducible

National Aeronautics and Space Administration
Ames Research Center
Moffet Field, California 94035
Attn: Librarian

National Aeronautics and Space Administration
Goddard Space Flight Center
Greenbelt, Maryland 20771
Attn: Librarian

National Aeronautics and Space Administration
Langley Research Center
Hampton, Virginia 23365
Attn: Librarian

National Aeronautics and Space Administration
Manned Spacecraft Center
Houston, Texas 77001
Attn: Librarian

National Aeronautics and Space Administration
George C. Marshall Space Flight Center
Huntsville, Alabama 35812
Attn: Librarian

National Aeronautics and Space Administration
Jet Propulsion Laboratory
4800 Oak Grove Drive
Pasadena, California 91103
Attn: Librarian

National Aeronautics and Space Administration
21000 Brookpark Road
Cleveland, Ohio 44135

Attn: Librarian

Dr. Bernard Lubarsky (SPSD) MS 86-1
Roger Mather (NPTB)
G. M. Ault MS 105-1
Joe Joyce (NPTB) MS 86-5
Paul Moorhead (NPTB)
John Creagh MS 86-5
John E. Dilley (SPSPS) MS 85-1
Norman T. Musial MS 77-1
Thomas Strom MS 5-8
T. A. Moss (NPTB) MS 86-5
Dr. Louis Rosenblum (MSD) (106-1)
R. Titran MS 105-1
R. Hall MS 105-1
George Tulisiak MS 14-1

10 copies

National Aeronautics and Space Administration
Western Operations Office
150 Pico Boulevard
Santa Monica, California 90406
Attn: Mr. John Keeler

National Bureau of Standards
Washington 25, D. C.
Attn: Librarian

Aeronautical Systems Division
Wright-Patterson Air Force Base, Ohio
Attn: Charles Armbruster (ASRPP-10)
T. Cooper
Librarian
John L. Morris
H. J. Middendorp ASNRG 33143

Army Ordnance Frankford Arsenal
Bridesburg Station
Philadelphia 37, Pennsylvania
Attn: Librarian

I. I. T. Research Institute
10 W. 35th Street
Chicago, Illinois 60616

Atomics International
8900 DeSoto Avenue
Canoga Park, California

AVCO
Research and Advanced Development Department
201 Lowell Street
Wilmington, Massachusetts
Attn: Librarian

Babcock and Wilcox Company
Research Center
Alliance, Ohio
Attn: Librarian

Battelle Memorial Institute
505 King Avenue
Columbus, Ohio
Attn: C. M. Allen
Attn: Librarian

The Bendix Corporation
Research Laboratories Division
Southfield, Detroit 1, Michigan
Attn: Librarian

The Boeing Company
Seattle, Washington
Attn: Librarian

Brush Beryllium Company
Cleveland, Ohio
Attn: Librarian

Carborundum Company
Niagara Falls, New York
Attn: Librarian

Bureau of Ships
Department of the Navy
Washington 25, D. C.
Attn: Librarian

Bureau of Weapons
Research and Engineering
Material Division
Washington 25, D. C.
Attn: Librarian

U. S. Naval Research Laboratory
Washington 25, D. C.
Attn: Librarian

Advanced Technology Laboratories
Division of American Standard
369 Whisman Road
Mountain View, California
Attn: Librarian

Aerojet General Nucleonics
P. O. Box 77
San Ramon, California
Attn: Librarian

AiResearch Manufacturing Company
Sky Harbor Airport
402 South 36th Street
Pheonix, Arizona
Attn: Librarian
E. A. Kovacevich

AiResearch Manufacturing Company
9851-9951 Sepulveda Boulevard
Los Angeles 45, California
Attn: Librarian

Chance Vought Aircraft Inc.
P. O. Box 5907
Dallas 22, Texas
Attn: Librarian

Clevite Corporation
Mechanical Research Division
540 East 105th Street
Cleveland 8, Ohio
Attn: Mr. N. C. Beerli,
Project Administrator

Climax Molybdenum Company of Michigan
Detroit, Michigan
Attn: Librarian

Convair Astronautics
5001 Kerry Villa Road
San Diego 11, California
Attn: Librarian

Curtiss-Wright Corporation
Research Division
Tuehanna, Pennsylvania
Attn: Librarian

E. I. dePont de Nemours and Company, Inc.
Wilmington 98, Delaware
Attn: W. E. Lusby, Jr.
Defense Contracts Supervisor

Electro-Optical Systems, Incorporated
Advanced Power Systems Division
Pasadena, California
Attn: Librarian

Fansteel Metallurgical Corporation
North Chicago, Illinois
Attn: Librarian
Attn: Henry L. Kohn

Ford Motor Company
Aeronutronics
Newport Beach, California
Attn: Librarian

General Atomic
John Jay Hopkins Laboratory
P. O. Box 608
San Diego 12, California
Attn: Librarian

General Electric Company
Atomic Power Equipment Division
P. O. Box 1131
San Jose, California

General Electric Company
Missile and Space Vehicle Dept.
3198 Chestnut Street
Philadelphia 4, Pennsylvania

General Electric Company
Vallecitos Atomic Laboratory
Pleasanton, California
Attn: Librarian

General Electric Company
Evendale, Ohio 45215
FPD Technical Information Center
Bldg. 100, Mail Drop F-22

General Electric Company
Reentry Systems Dept.
Cincinnati, Ohio 45215
Attn: Dr. J. W. Semmel
E. E. Hoffman

2 copies

General Dynamics/Fort Worth
P. O. Box 748
Fort Worth, Texas
Attn: Librarian

General Motors Corporation
Allison Division
Indianapolis 6, Indiana
Attn: Librarian

Hamilton Standard
Division of United Aircraft Corporation
Windsor Locks, Connecticut
Attn: Librarian

Hughes Aircraft Company
Engineering Division
Culver City, California
Attn: Librarian

Lockheed Missiles and Space Division
Lockheed Aircraft Corporation
Sunnyvale, California
Attn: Librarian

Marquardt Aircraft Company
P. O. Box 2013
Van Nuys, California
Attn: Librarian

The Martin Company
Baltimore 3, Maryland
Attn: Librarian

The Martin Company
Nuclear Division
P. O. Box 5042
Baltimore 20, Maryland
Attn: Librarian

Martin Marietta Corporation
Metals Technology Laboratory
Wheeling, Illinois

Massachusetts Institute of Technology
Cambridge 39, Massachusetts
Attn: Librarian

Materials Research and Development
Manlabs, Inc.
21 Erie Street
Cambridge 39, Massachusetts

Materials Research Corporation
Orangeburg, New York
Attn: Librarian

McDonnell Aircraft
St. Louis, Missouri
Attn: Librarian

MSA Research Corporation
Callery, Pennsylvania
Attn: Librarian

National Research Corporation
70 Memorial Drive
Cambridge 42, Massachusetts
Attn: Librarian

North American Aviation
Los Angeles Division
Los Angeles 9, California
Attn: Librarian

Norton Company
Worcester, Massachusetts
Attn: Librarian

Pratt & Whitney Aircraft
400 Main Street
East Hartford 8, Connecticut
Attn: Librarian

Republic Aviation Corporation
Farmingdale, Long Island, New York
Attn: Librarian

Solar
2200 Pacific Highway
San Diego 12, California
Attn: Librarian

Southwest Research Institute
8500 Culebra Road
San Antonio 6, Texas
Attn: Librarian

Rocketdyne
Canoga Park, California
Attn: Librarian

Superior Tube Company
Norristown, Pennsylvania
Attn: Mr. A. Bound

Sylvania Electric Products, Inc.
Chemical and Metallurgical
Towanda, Pennsylvania
Attn: Librarian

Temescal Metallurgical
Berkeley, California
Attn: Librarian

Union Carbide Corporation
Parma Research Center
Technical Information Service
P. O. Box 6116
Cleveland, Ohio 44101

Union Carbide Metals
Niagara Falls, New York
Attn: Librarian

Union Carbide Stellite Corporation
Kokomo, Indiana
Attn: Librarian

Union Carbide Nuclear Company
P. O. Box X
Oak Ridge, Tennessee
Attn: X-10 Laboratory Records Department **2 copies**

United Nuclear Corporation
5 New Street
White Plains, New York
Attn: Librarian
Attn: Mr. Albert Weinstein,
Sr. Engineer

Universal Cyclops Steel Corporation
Refractomet Division
Bridgeville, Pennsylvania
Attn: C. P. Mueller

University of Michigan
Department of Chemical and Metallurgical Eng.
Ann Arbor, Michigan
Attn: Librarian

U. S. Atomic Energy Commission
Technical Reports Library
Washington 25, D. C.
Attn: J. M. O'Leary

U. S. Atomic Energy Commission
Germantown, Maryland
Attn: Col. E. L. Douthett
SNAP 50/SPUR Project Office
Attn: H. Rothen
SNAP 50/SPUR Project Office
Attn: Socrates Christofer
Attn: Major Gordon Dicker
SNAP 50/SPUR Project Office

U. S. Atomic Energy Commission
Technical Information Service Extension
P. O. Box 62
Oak Ridge, Tennessee

3 copies

U. S. Atomic Energy Commission
Washington 25, D. C.
Attn: M. J. Whitman

Argonne National Laboratory
9700 South Cross Avenue
Argonne, Illinois
Attn: Librarian

Brookhaven National Laboratory
Upton Long Island, New York
Attn: Librarian

Oak Ridge National Laboratory
Oak Ridge, Tennessee
Attn: Dr. W. O. Harms
Attn: Dr. A. J. Miller
Attn: Librarian

Office of Naval Research
Power Division
Washington 25, D. C.
Attn: Librarian

Vought Astronautics
P. O. Box 5907
Dallas 22, Texas
Attn: Librarian

Wah Chang Corporation
Albany, Oregon
Attn: Librarian

Westinghouse Electric Corporation
Astronuclear Laboratory
P. O. Box 10864
Pittsburgh, Pennsylvania 15236
Attn: R. Begley

Westinghouse Electric Corporation
Materials Manufacturing Division
RD No. 2 Box 25
Blairsville, Pennsylvania
Attn: Librarian
Attn: F. L. Orrell

Wolverine Tube Division
Calumet and Hecla, Inc.
17200 Southfield Road
Allen Park, Michigan
Attn: Mr. Eugene F. Hill

Wyman-Gordon Company
North Grafton, Massachusetts
Attn: Librarian

Westinghouse Electric
Aerospace Electrical Division
Lima, Ohio
Attn: Paul Kueser

Air Force Materials Laboratory
Research and Technology Division
Wright-Patterson Air Force Base, Ohio 45433
Attn: C. L. Harmsworth

Johns Hopkins University
Applied Physics Laboratory
8621 Sergia Avenue
Silver Spring, Maryland
Attn: Librarian

Pratt & Whitney Aircraft
Materials Development Laboratory
P. O. Box 611
Middletown, Connecticut
Attn: Librarian

RCA
Defense Electronics Products
Astro-Electronics Division
Princeton, New Jersey
Attn: Librarian

Lawrence Radiation Lab
Technical Information Division
Livermore, California 94550
Attn: W. Blake Myers

General Electric Co.
Nuclear Materials and Propulsion Operation
P. O. Box 15132
Cincinnati, Ohio 45215
Attn: 710 Reactor Systems Program Operation

Dr. James Hadley
Head, Reactor Division
Lawrence Radiation Laboratory
P. O. Box 808
Livermore, California

H. F. Conrad
Process and Materials Division
Chemistry Department
Lawrence Radiation Laboratory
P. O. Box 808
Livermore, California

Matthew King
TRW SYSTEMS INC.
1 Space Park
Redondo Beach, California

ATTN: Nuclear Technology Dept.