

NASA CR-72324
R-6754-5

PROPERTIES OF NONAQUEOUS ELECTROLYTES
FIFTH QUARTERLY REPORT

(20 June 1967 to 19 September 1967)

By

Rudolf Keller
James N. Foster
John F. Hon
Otto F. Kalman
Jack M. Sullivan

Prepared For

National Aeronautics and Space Administration

19 October 1967

Contract NAS7-8521

Technical Management
NASA Lewis Research Center
Cleveland, Ohio
Space Power Systems Division
Mr. Robert B. King

Rocketdyne
A Division of North American Rockwell Corporation
Canoga Park, California

FOREWORD

This report was prepared under G.O. 08852 in compliance with Article VI and Paragraph B of Contract NAS3-8521 for the National Aeronautics and Space Administration, Lewis Research Center, Cleveland, Ohio. The work was conducted in the Chemical and Material Sciences Department of Rocketdyne's Research Division, during the period 20 June 1967 through 19 September 1967.

ABSTRACT

Studies of aprotic electrolytes based on three solvents: propylene carbonate, dimethyl formamide, and acetonitrile, were continued. Characterized components were used to prepare the electrolyte solutions.

Structural studies of electrolytes containing lithium perchlorate, lithium chloride, aluminum chloride, and cupric chloride were performed by nuclear magnetic resonance.

The physical properties measured included solvent viscosities, electrolyte conductances to determine individual ion mobilities, sonic velocities, and transference numbers.

CONTENTS

Foreword	iii
Abstract	iii
Summary	1
Description of Progress	3
Preparation of Electrolytes	3
Nuclear Magnetic Resonance Structural Studies	6
Physical Property Determinations	24
Work Planned for Next Quarter	55
Preparation of Electrolytes	55
Structural Studies	55
Physical Property Determinations	55
References	57

ILLUSTRATIONS

1.	Al ²⁷ Nuclear Magnetic Resonance in 1 M AlCl ₃ /AN Containing Various Concentrations of LiCl	8
2.	Approximate Relative Population of Coordinating Al Species in 1 M AlCl ₃ /AN as a Function of Added LiCl	9
3.	Al ²⁷ Nuclear Magnetic Resonance in 1 M AlCl ₃ /AN Containing Various Concentrations of LiClO ₄	11
4.	Proton Spectrum (High Resolution) in 1 M CuCl ₂ /DMF, 4 Months After Preparation	13
5.	Proton Spectrum in 1 M CuCl ₂ /DMF, Freshly Prepared Specimen	15
6.	Proton Spectrum in 0.5 M LiCl + 1 M CuCl ₂ /DMF, Freshly Prepared Specimen	16
7.	Proton Spectrum in 1 M LiCl + 1 M CuCl ₂ /DMF, Freshly Prepared Specimen	17
8.	Proton Spectrum in 2 M LiCl + 1 M CuCl ₂ /DMF, Freshly Prepared Specimen	18
9.	Proton Spectrum in 1 M CuCl ₂ /DMF, 1 Month After Preparation	19
10.	Proton Spectrum in 0.5 M LiCl + 1 M CuCl ₂ /DMF, 1 Month After Preparation	20
11.	Proton Spectrum in 1 M LiCl + 1 M CuCl ₂ /DMF, 1 Month After Preparation	21
12.	Proton Spectrum in 2 M LiCl + 1 M CuCl ₂ /DMF, 1 Month After Preparation	22
13.	Shift of Downfield Proton Peak as a Function of Time After Preparation of Various Concentrations of LiCl #2 in 1 M CuCl ₂ #2/DMF #5-2	23
14.	Equivalent Conductance of TBA•TPB in PC at 25 and 60 C	27
15.	Equivalent Conductance of TBA•TPB in DMF at 25 and 60 C	29
16.	Equivalent Conductance of TBA•TPB in AN at 25 and 60 C	31
17.	Equivalent Conductance of TBA•Br in PC at 25 and 60 C	33

18.	Equivalent Conductance of TBA ⁺ Br in DMF at 25 and 60 C . . .	35
19.	Equivalent Conductance of TBA ⁺ Br in AN at 25 and 60 C . . .	37
20.	Equivalent Conductance of LiBr in AN at 25 and 60 C . . .	39
21.	Equivalent Conductance of LiClO ₄ in DMF at 25 and 60 C	41
22.	Determination of Sonic Velocities	51

TABLES

1.	Characterization of Distilled Solvent Batches	4
2.	Viscosities of Solvents at 25 and 60 C	24
3.	Specific Conductance (λ) and Equivalent Conductance (Λ) of TBA•TPB #1/PC #2-11	26
4.	Specific Conductance (λ) and Equivalent Conductance (Λ) of TBA•TPB #1/DMF #5-1	28
5.	Specific Conductance (λ) and Equivalent Conductance (Λ) of TBA•TPB #1/AN #4-1	30
6.	Specific Conductance (λ) and Equivalent Conductance (Λ) of TBA•Br #1/PC #2-10	32
7.	Specific Conductance (λ) and Equivalent Conductance (Λ) of TBA•Br #1/DMF #5-2	34
8.	Specific Conductance (λ) and Equivalent Conductance (Λ) of TBA•Br #1/AN #4-1	36
9.	Specific Conductance (λ) and Equivalent Conductance (Λ) of LiBr #2/AN #4-1	38
10.	Specific Conductance (λ) and Equivalent Conductance (Λ) of LiClO ₄ #2/DMF #5-2	40
11.	Equivalent Conductance at Infinite Dilution (Λ_0) for Several Solutes and Individual Ions in Propylene Carbonate	42
12.	Equivalent Conductance at Infinite Dilution (Λ_0) for Several Solutes and Individual Ions in Dimethyl Formamide	43
13.	Equivalent Conductance at Infinite Dilution (Λ_0) for Several Solutes and Individual Ions in Acetonitrile	44
14.	Walden Product ($\Lambda_0 \cdot \eta$) for Several Solutes and Ions in PC, DMF, and AN	46

15.	Hittorf Experiments With 1 M LiClO_4/AN	47
16.	Hittorf Experiment With Electrolytes Containing LiCl and AlCl_3 in PC and AN	48
17.	Velocity of Sound in Propylene Carbonate Electrolytes	52

SUMMARY

Physical properties and structural studies were conducted in the solvents propylene carbonate (PC), dimethyl formamide (DMF) and acetonitrile (AN); the water content of the solvents was in the range of 40 ± 20 ppm. The distilled solvent batches were analyzed by vapor-phase chromatography on a routine basis.

The Cl^{35} nuclear magnetic resonance (NMR) was investigated, and approximate chemical shifts in lithium perchlorate solutions were determined. It was confirmed that ClO_4^- ions exist in these solutions. Nuclear magnetic resonance results also revealed the existence of two aluminum species in AlCl_3/AN solutions: $\text{Al}^{+++}[\text{AN}]_n$ and AlCl_4^- . The concentration of the former species decreased upon addition of LiCl . A change with time of the H^1 NMR spectrum of dimethyl formamide solutions containing CuCl_2 was observed, and this phenomenon is being investigated further.

Viscosity data for the solvents are presented for 25 and 60 C. Conductances were measured of electrolytes containing tetrabutylammonium tetraphenylboride, and tetrabutylammonium bromide to determine individual ion mobilities in lithium bromide and lithium perchlorate solutions. A low mobility of the lithium ion was found in all cases, thus confirming transference experiments. Results of Hittorf experiments with electrolytes containing 0.7 M LiCl + 1 M AlCl_3 in propylene carbonate and acetonitrile are consistent with the NMR results, i.e., with the presence of Li^+ , Al^{+++} , and AlCl_4^- ions.

Sonic velocities of some electrolytes were determined, and measurements of diffusion coefficients and dielectric constants were initiated.

DESCRIPTION OF PROGRESS

PREPARATION OF ELECTROLYTES

Purification of Solvents

Solvents were purified by distillation and analyzed as described previously (Ref. 1 through 4). Summaries of both the distillation conditions and the analytical procedure normally applied were presented in Ref. 3. The solvent batches used during the report period are listed in Table 1. With one exception, the water content of all solvent batches was 40 ± 20 ppm, and no organic impurity above this level was detected.

Attempts to reduce the water content of DMF to 40 ± 20 ppm by distillation were temporarily unsuccessful. A step by step monitoring of the purification process on the spinning band column therefore appeared advisable. The following procedure to purify a spectrograde material was employed: (1) a 700 cc batch of reagent grade DMF was dried by allowing it to contact molecular sieves for 3 days, (2) a preliminary batch of DMF was distilled to "wash" the column, and (3) the predried DMF was distilled from ground CaH_2 at reduced pressure. The following results were obtained by vapor-phase chromatographic analysis.

1. Initial sample (DMF #5, spectrograde quality, J. T. Baker, 220 ppm H_2O according to manufacturer's analysis)--690 ppm H_2O , 98 ppm organics
2. Predried sample--58 ppm H_2O , 32 ppm organics
3. First 100 cc of distillate--250 ppm H_2O , 110 ppm organics
4. Second 100 cc of distillate--143 ppm H_2O , 9 ppm organics
5. Collected batch, 400 cc, (DMF #5-2)--65 ppm H_2O , no organics detected

The results appear to indicate that some water was introduced into the solvent during the distillation, because the water content of the predried starting material was less than that of the distillates obtained. For this reason, the redistillation of a previously purified, unsatisfactory batch was subsequently conducted at atmospheric pressure rather than at reduced pressure, and an acceptable product (DMF #5-1) resulted.

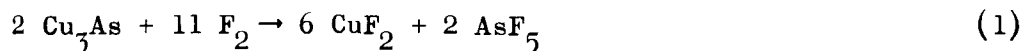
TABLE 1

CHARACTERIZATION OF DISTILLED SOLVENT BATCHES

Solvent Code	H ₂ O Content, ppm	Organics, ppm
PC #2-6	35	None
PC #2-7	20	35
PC #2-9	20	20
PC #2-10	20	None
PC #2-11	32	None
DMF #4-1	50	None
DMF #5-1	52	26
DMF #5-2	65	9
AN #1-2	40	None
AN #3-1	50	None
AN #4-1	48	None

Synthesis of Cupric Fluoride

The fluorination of copper arsenide (Cu₃As) was investigated in an effort to prepare pure cupric fluoride. Copper arsenide was obtained in 99.99 percent quality. The reaction



was expected to furnish the desired CuF₂ after removal of the volatile AsF₅.

Four direct fluorination attempts were made: static reactions at ambient and 250 C, and flow-by reactions at ambient and 60 C. In all cases, the Cu_3As appeared to have burned at a very high local temperature causing the copper to form a molten granule or clinker without becoming completely fluorinated.

Preparation of Tetrabutylammonium Tetraphenylboride (TBA·TPB)

Tetrabutylammonium tetraphenylboride was prepared by metathesis of tetrabutylammonium bromide (TBA·Br #1, Columbia Organic Chemicals Company, Inc., polarographic grade) and sodium tetraphenylboride (Na·TPB #1 Baker Adamson Laboratory Chemical, reagent grade) according to a procedure given in Ref. 5. Solutions of TBA·Br and Na·TPB in conductivity water were prepared (0.1 mole in 500 cc). The solution of Na·TPB was allowed to drip through a fine filter into the TBA·Br solution. The bulky white precipitate was filtered and dried. The material was recrystallized three times from acetone and dried under vacuum at room temperature for 6 days. This material was subsequently recrystallized and dried under vacuum at 50 C for 2 days. It was given the designation TBA·TPB #1.

Tetrabutylammonium Bromide (TBA·Br)

Polarographic grade tetrabutylammonium bromide (Columbia Organic Chemicals Company, Inc.), TBA·Br #1, was used for determination of the equivalent conductance at infinite dilution, Λ_0 . This chemical, as well as TBA·TPB, was not analyzed because impurities possibly present at moderate concentrations would have negligible effects in these dilute solutions used for determining Λ_0 values.

Tetramethylammonium Fluoride (TMA·F)

TMA·F #2 (Aldrich Chemical Company, Inc.) was used for a determination of the sonic velocity of a TMA·F/PC electrolyte. This chemical has not yet been characterized.

NUCLEAR MAGNETIC RESONANCE STRUCTURAL STUDIES

LiClO₄ in Propylene Carbonate, Dimethyl Formamide and Acetonitrile

The Cl³⁵ resonance was investigated using a broadline spectrometer and a magnetic field of 10 Kgauss in:

- 1 M LiClO₄ #2/PC #2-7
- 1 M LiClO₄ #2/DMF #3-3
- 1 M LiClO₄ #2/AN #4-1

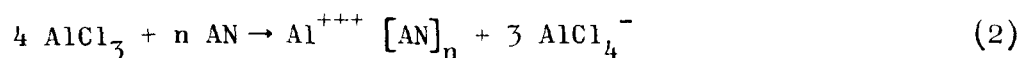
All three lines exhibit virtually identical characteristics. They are narrow (1 M LiClO₄/PC was previously reported in Ref. 4) and have a chemical shift relative to the chloride ion in a 3 M LiCl/H₂O reference of approximately 1000 ppm. Calibrations are in progress to determine the magnitude of this shift more accurately.

The narrow line shows that the Cl³⁵ site has at least tetrahedral symmetry. Furthermore, the chemical shift of the ClO₄⁻ ion relative to the chloride ion in concentrated HCl is reported in Ref. 6 as 970 ppm. Thus, both the line characteristics and the chemical shift give evidence of the presence of the expected ClO₄⁻ ion in all of these specimens

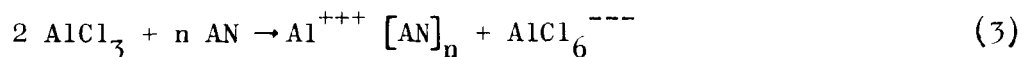
AlCl₃ and LiCl in Acetonitrile

The Al²⁷ line has been investigated using a broadline NMR spectrometer at a magnetic field of 7.17 Kgauss in 1 M AlCl₃ #3/AN #4-1 solutions containing different concentrations of LiCl #2 and LiClO₄ #2. Measurements were made initially in specimens contained in screw-top tubes. However, white precipitates formed in some of the specimens, apparently because of screw-top seal

"breathing", thus making the results questionable. New specimens were prepared and the top of the tube was sealed by fusing the glass. No precipitates have formed in these specimens. It had been previously reported (Ref. 4) that there were two aluminum species found in 1 M AlCl_3/AN and that the addition of LiCl to the point of saturation removed the coordinating species. It is hypothesized that the following "reaction" occurs in 1 M AlCl_3/AN :



where $[\text{AN}]_n$ represents the n acetonitrile molecules coordinated by the Al^{+++} ion (AlCl_4^- may or may not be solvated). This hypothesis is based upon the fact that both Al^{27} lines are quite narrow requiring high symmetry (at least tetrahedral) in the environment of the aluminum site in both Al containing species, and that the approximate relative population as taken from the maximum of the recorded spectra (Fig. 1a) is three to one. Furthermore, the removal of the coordinating species by the addition of LiCl to 1 M AlCl_3 can be explained if the chloride ions, introduced by the LiCl , interact with the Al^{+++} to form more AlCl_4^- . Another "reaction" which could be hypothesized because it produces highly symmetric species is:



However, the ratio of species in this case is one to one which is not that shown by the Al^{27} spectra. As a further check on the validity of reaction 2, the Al^{27} spectrum was taken for several LiCl concentrations. The results are shown in Fig. 1. Using the maximum derivative as a measure of the line intensity, the ratio of the line intensity from the coordinating species to the total intensity from both species is plotted in Fig. 2 as a function of the LiCl concentration. The solid line represents the theoretical ratio of

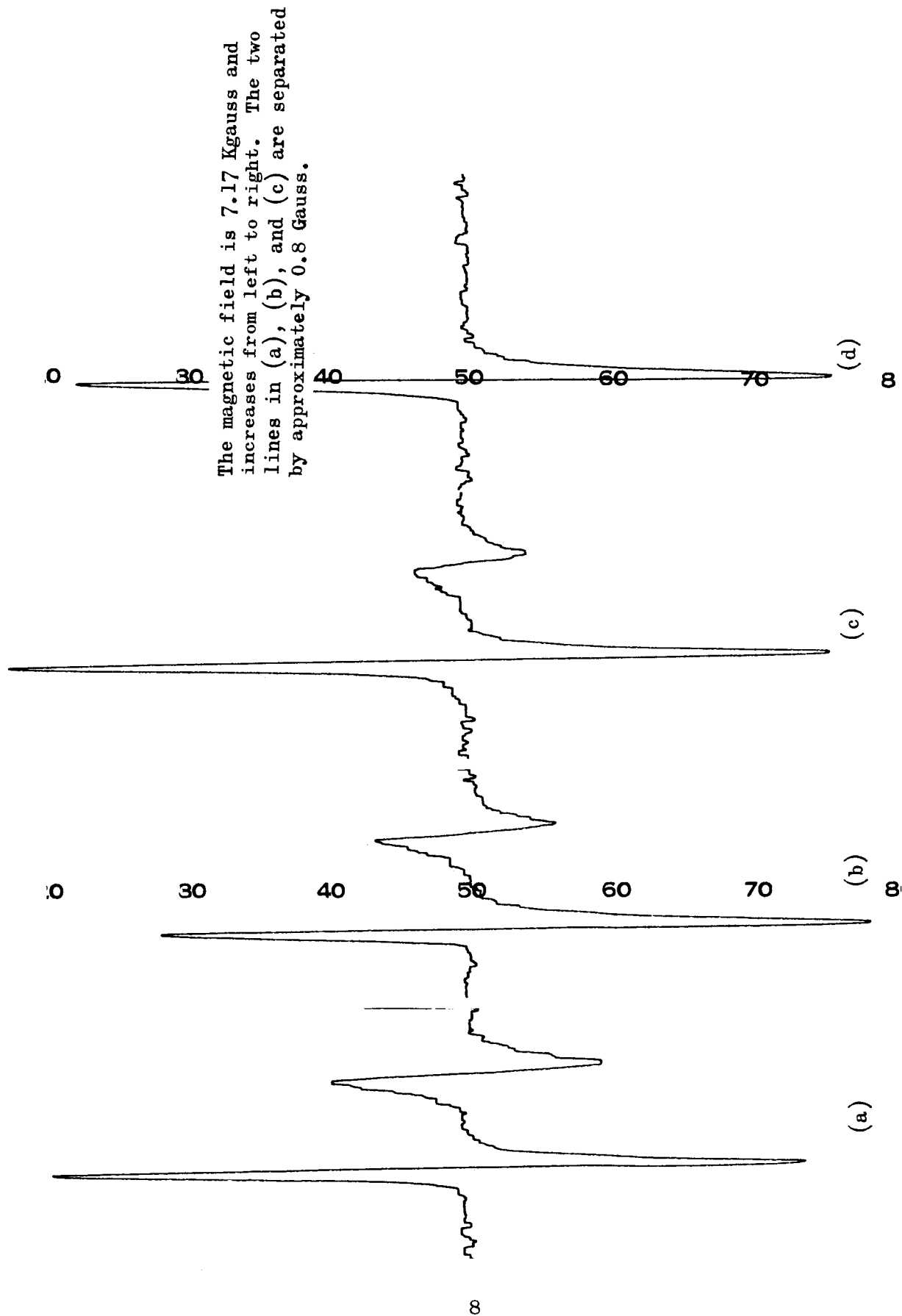


Figure 1. Al^{27} Nuclear Magnetic Resonance in 1 M $AlCl_3/AN$ Containing Various Concentrations of $LiCl$ (a) No $LiCl$, (b) 0.25 M $LiCl$, (c) 0.5 M $LiCl$, (d) 0.9 M $LiCl$ (saturated at 25 C)

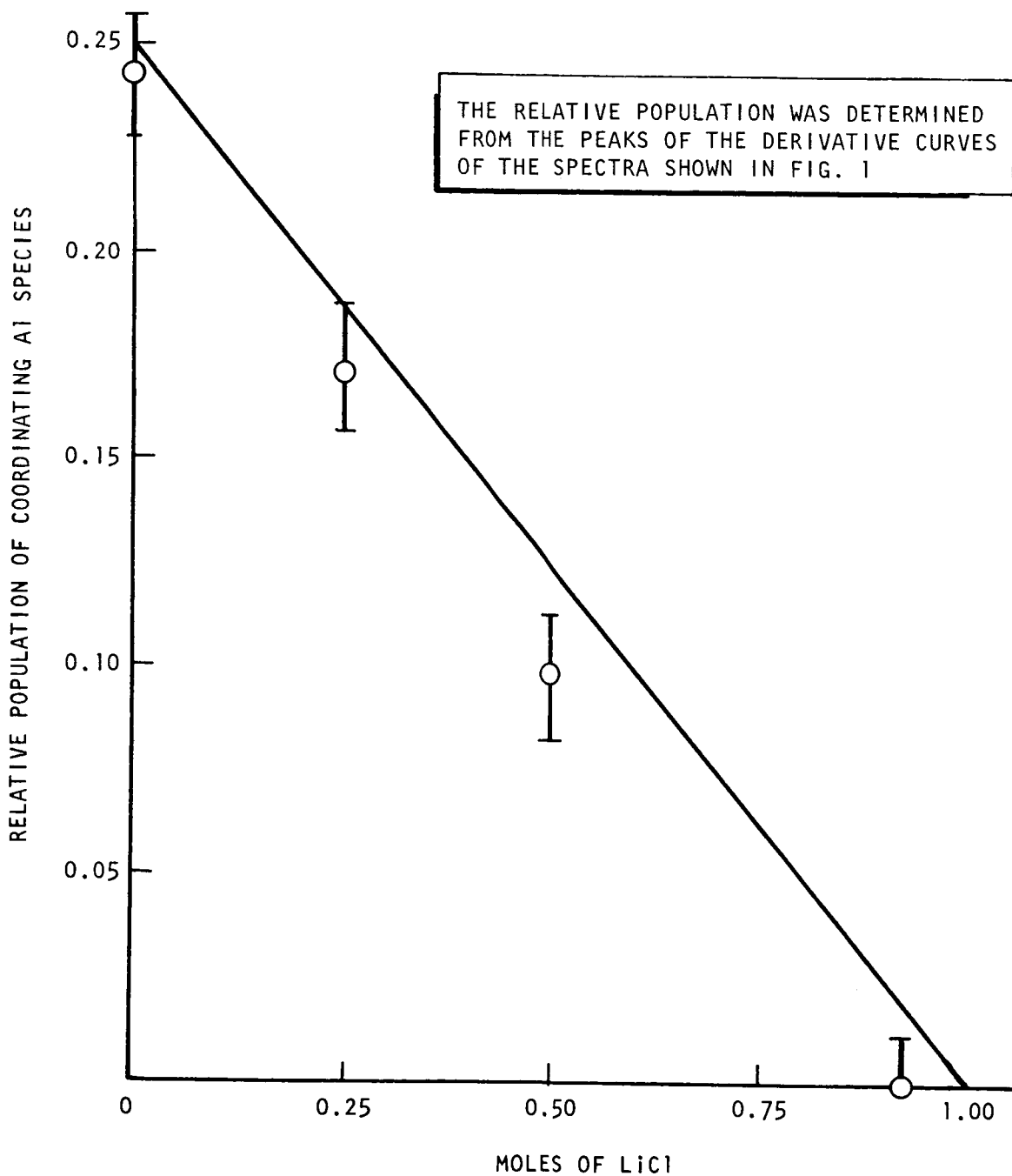
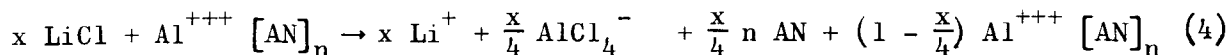


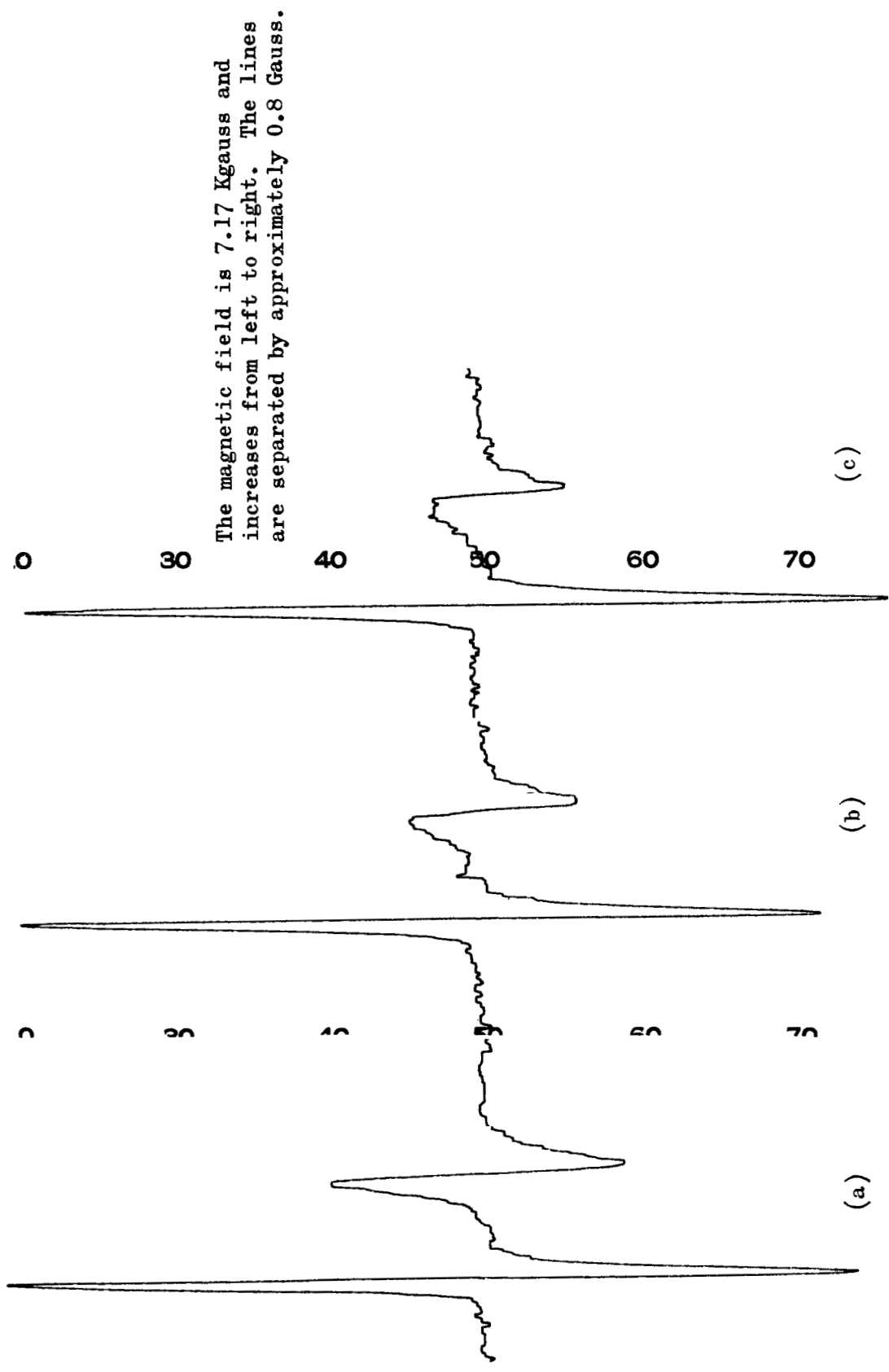
Figure 2. Approximate Relative Population of Coordinating Al Species in 1 M AlCl_3/AN as a Function of Added LiCl.

coordinating species to total species as based upon the reaction



i.e., LiCl interacts to form AlCl_4^- ions. The line width of the coordinating species is somewhat greater than that of the noncoordinating species so that using the maxima of the recorded spectra to determine population ratio should result in an underestimate of the relative coordinating species population and the data points should fall somewhat below the theoretical line. The agreement of the data points with the theoretical curve is quite good, and substantiates reaction 4.

On the basis of these results, another experiment was conducted. As discussed previously, when LiClO_4 is dissolved in acetonitrile ClO_4^- is present. Two specimens were prepared with LiClO_4 rather than LiCl. It was thought that because no Cl^- ions were formed and because ClO_4^- is a relatively inert ion, that the population of the coordinating species would not be reduced showing the importance of the Cl^- in the depletion of the coordinating species. The Al^{27} line is shown in Fig. 3 for 0.5 M LiClO_4 #2 + 1 M AlCl_3 #3/AN #4-1 and 1 M LiClO_4 #2 + 1 M AlCl_3 #3/AN #4-1. As can be seen, contrary to expectation, these spectra are different from the Al^{27} spectra of 1 M AlCl_3 #3/AN #4-1 shown in Fig. 3a. Also, the H^1 resonance indicates that the population of the coordinating species is decreased by the addition of LiClO_4 . Thus, addition of LiClO_4 to 1 M AlCl_3 /AN has a similar effect as LiCl but LiClO_4 is not as effective. Whereas 0.9 M LiCl reduces the population of the coordinating species to the point where it cannot be observed, 1 M LiClO_4 reduces the population approximately the same extent as 0.5 M LiCl. These results are tentatively explained on the basis of the formation of $\text{Al}(\text{ClO}_4)_4^-$ or $\text{Al}(\text{ClO}_4)_6^{3-}$ species. The ClO_4^- ion is not generally considered to be a complexing species; in these solutions, however, it does appear to complex, though much less effectively than the Cl^- ion. Thus, in the



The magnetic field is 7.17 Kgauss and increases from left to right. The lines are separated by approximately 0.8 Gauss.

Figure 3. Al^{27} Nuclear Magnetic Resonance in 1 M $AlCl_3/AN$ Containing Various Concentrations of $LiClO_4$, (a) No $LiClO_4$, (b) 0.5 M $LiClO_4$, (c) 1 M $LiClO_4$

1 M LiClO_4 + 1 M AlCl_3 /AN system, there would be three aluminum-containing species: $\text{Al}^{+++} [\text{AN}]_n$, AlCl_4^- , and $\text{Al}(\text{ClO}_4)_4^-$ (or $\text{Al}(\text{ClO}_4)_6^{---}$). It was expected that three Al lines would result but this was not observed. This could be explained if the difference of the chemical shift of the Al^{27} line in the anionic species is so small that separate lines could not be resolved. However, unless more information is obtained, this explanation must remain speculative.

CuCl_2 and LiCl in Dimethyl Formamide

Because of some unexpected findings, the proton line in the CuCl_2 + LiCl/DMF system has been studied extensively during this report period using the high resolution spectrometer. The H^1 spectrum of 1 M CuCl_2 #2/DMF #3-3 was reported (Ref. 4) as observed shortly after the specimen was prepared. An experiment was planned wherein LiCl would be added to the 1 M CuCl_2 /DMF system to determine whether the population of species would be changed as in the LiCl + AlCl_3 /AN and LiCl + AlCl_3 /PC systems. A spectrum from the original 1 M CuCl_2 #2/DMF #3-3 was recorded as a reference for comparison with that to be obtained from several specimens containing LiCl. The spectrum obtained was, however, completely different from the original spectrum. Whereas the original spectrum consisted of two very broad peaks (refer to Ref. 4, Fig. 3), the new spectrum as shown in Fig. 4 is very similar to that obtained from pure DMF (refer to Ref. 4, Fig. 6) except that the lines are somewhat broadened, and there are small downfield shifted peaks similar to those found when AlCl_3 is dissolved in DMF (however, the shifts observed in the 1 M CuCl_2 /DMF are considerably larger). Thus, over an extended period of time (approximately 4 months) the species present in this specimen had apparently changed.

New specimens were prepared to verify this change. In the new 1 M CuCl_2 #2/DMF #5-2 the spectrum was virtually identical to that found in the first

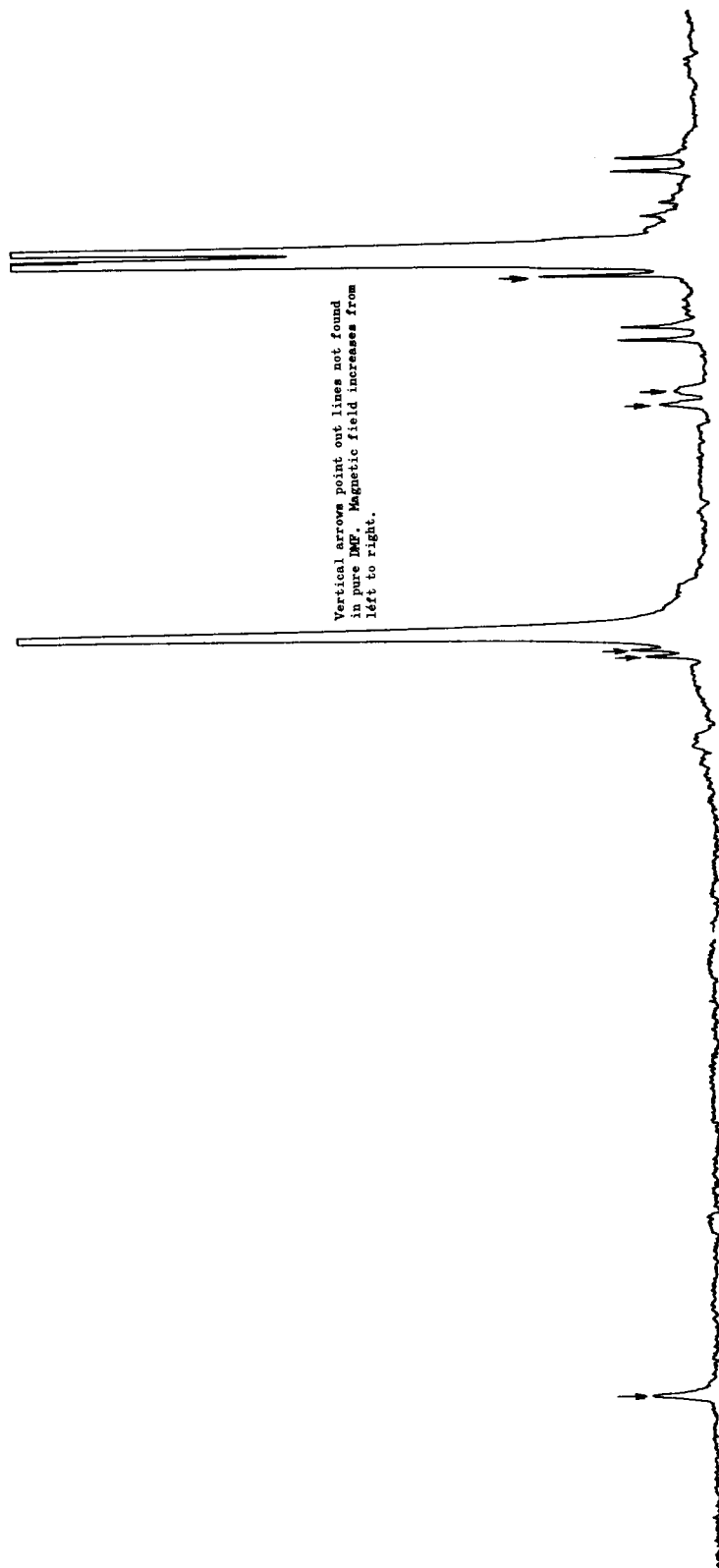


Figure 4. Proton Spectrum (High Resolution) in 1 M CuCl_2/DMF ,
4 Months After Preparation

1 M CuCl_2 #2/DMF #3-3, namely, two very broad peaks (one small and one large). The spectra from freshly prepared 1 M CuCl_2 #2/DMF #5-2, 0.5 M LiCl #2 + 1 M CuCl_2 #2/DMF #5-2, 1 M LiCl #2 + 1 M CuCl_2 #2/DMF #5-2 and 2 M LiCl #2 + 1 M CuCl_2 #2/DMF #5-2 shown in Fig. 5 through 8 are all similar except that as the concentration of LiCl is increased, the shift of the small peak from the large peak decreases and the line width decreases. The spectra from these specimens are now being recorded frequently to follow any changes. For example, the spectra obtained from these specimens 1 month after preparation are shown in Fig. 9 through 12. Thus far, the shift of the downfield peak in every specimen except the 2 M LiCl + 1 M CuCl_2 /DMF specimen has been decreasing. In the 2 M LiCl + 1 M CuCl_2 /DMF specimen, the shift has remained constant. These later spectra also show the appearance of additional small peaks. The shift of these peaks is also being determined. A plot of the major peak shifts as a function of time, to date, is presented in Fig. 13. Of particular interest is the fact that the shifts in 1 M CuCl_2 /DMF, 0.5 M LiCl + 1 M CuCl_2 /DMF, and 1 M LiCl + 1 M CuCl_2 /DMF are approaching that of the 2 M CuCl_2 /DMF specimen.

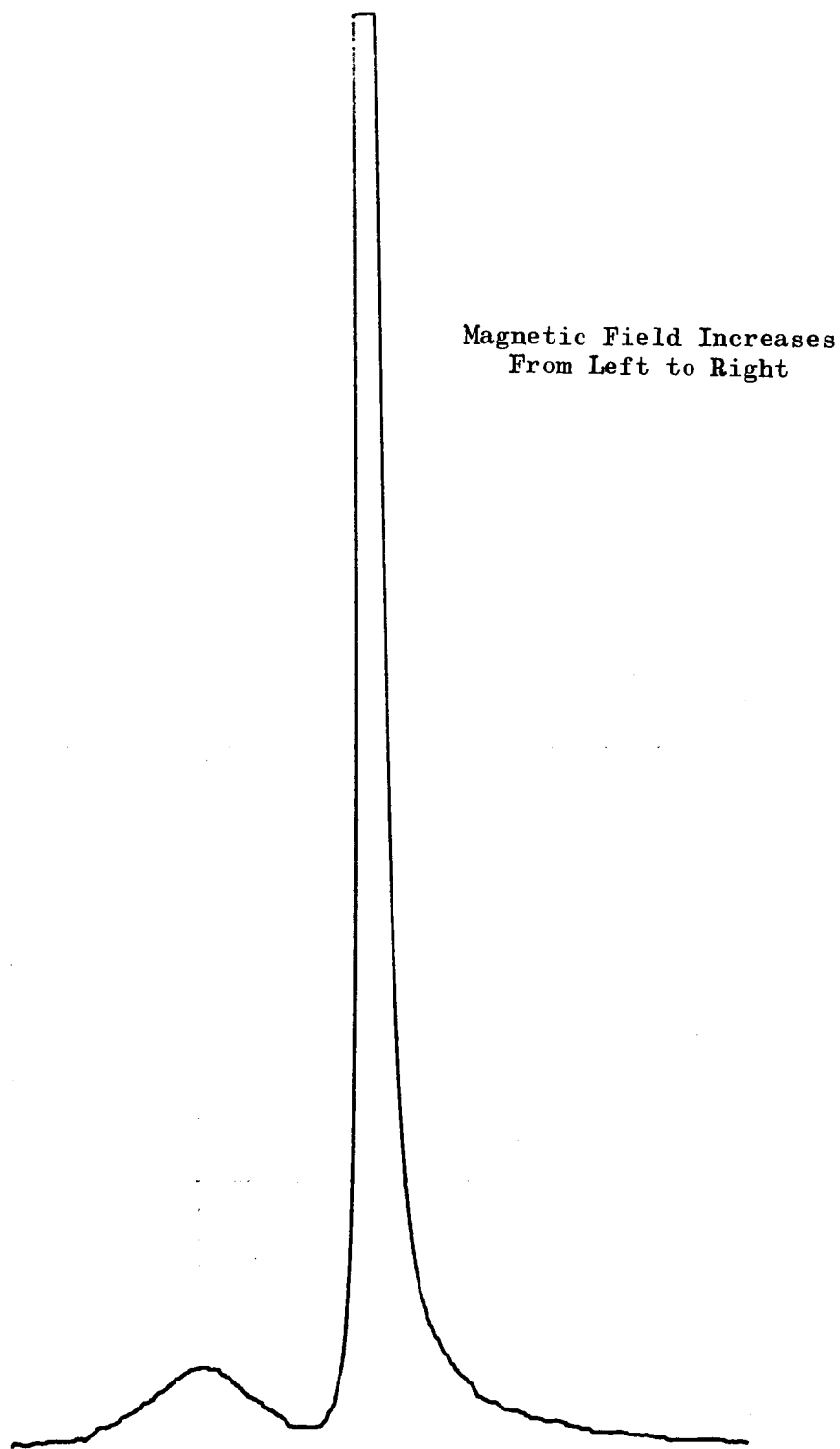


Figure 5. Proton Spectrum in 1 M CuCl_2/DMF ,
Freshly Prepared Specimen

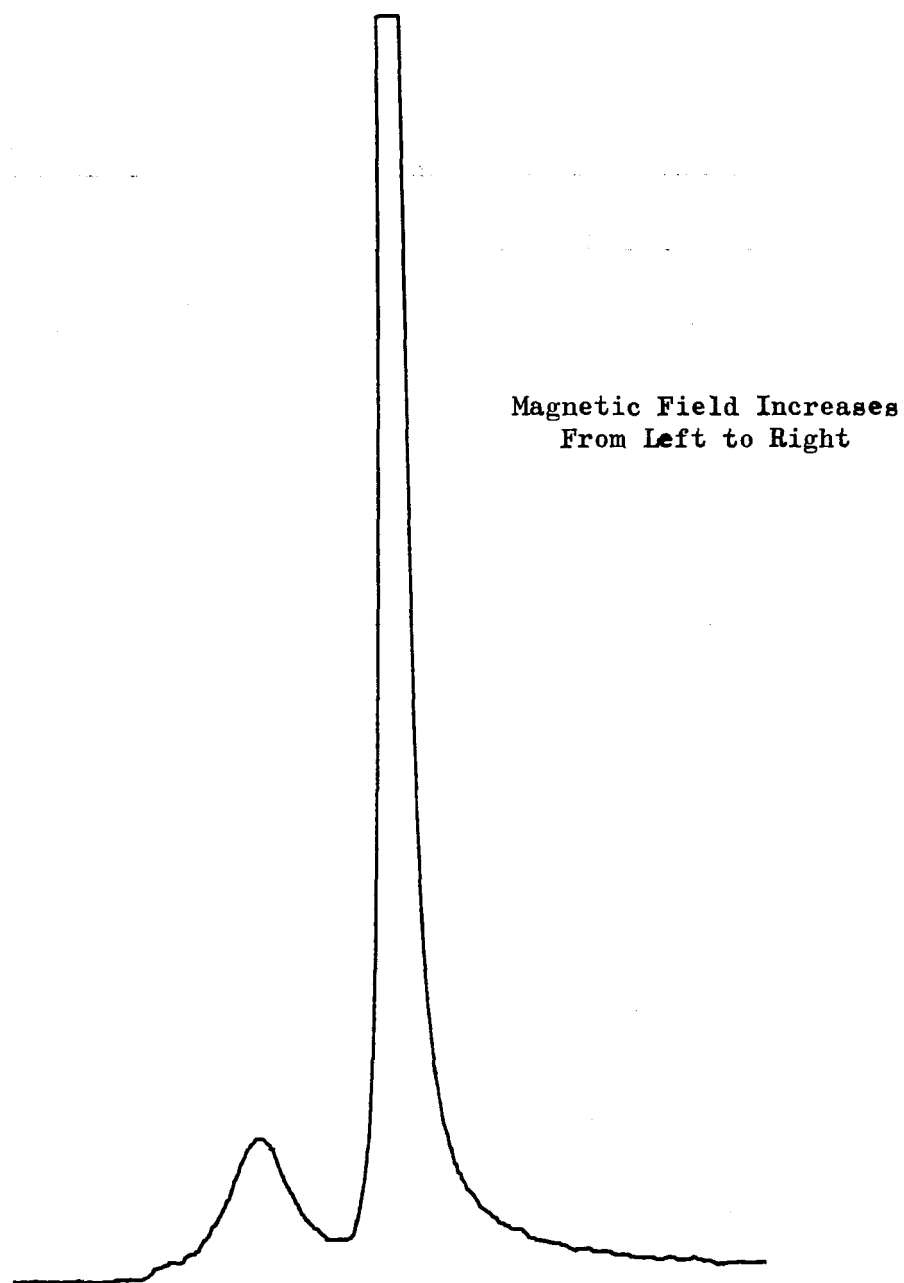


Figure 6. Proton Spectrum in 0.5 M LiCl + 1 M CuCl₂/DMF,
Freshly Prepared Specimen

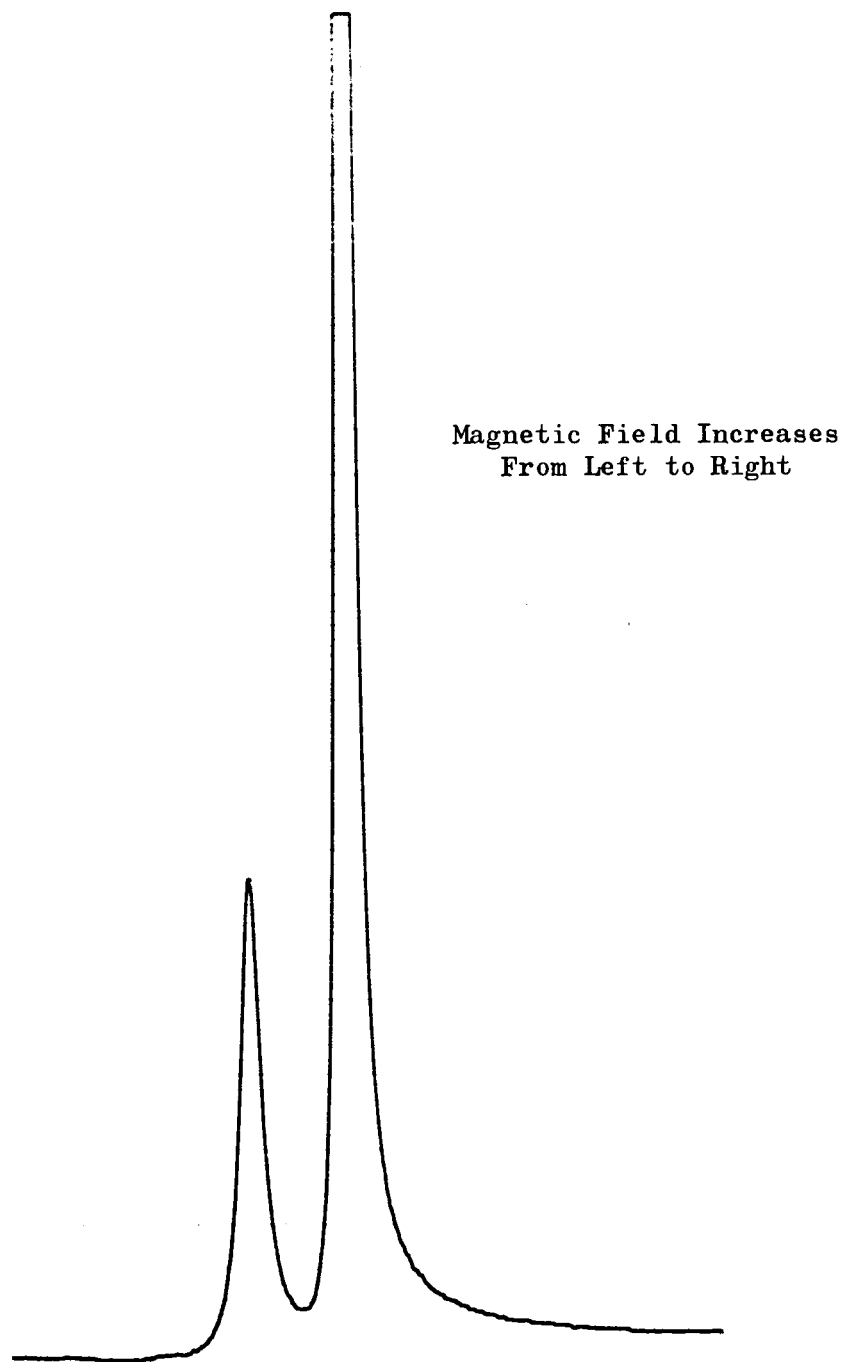


Figure 7. Proton Spectrum in 1 M LiCl + 1 M CuCl₂/DMF,
Freshly Prepared Specimen

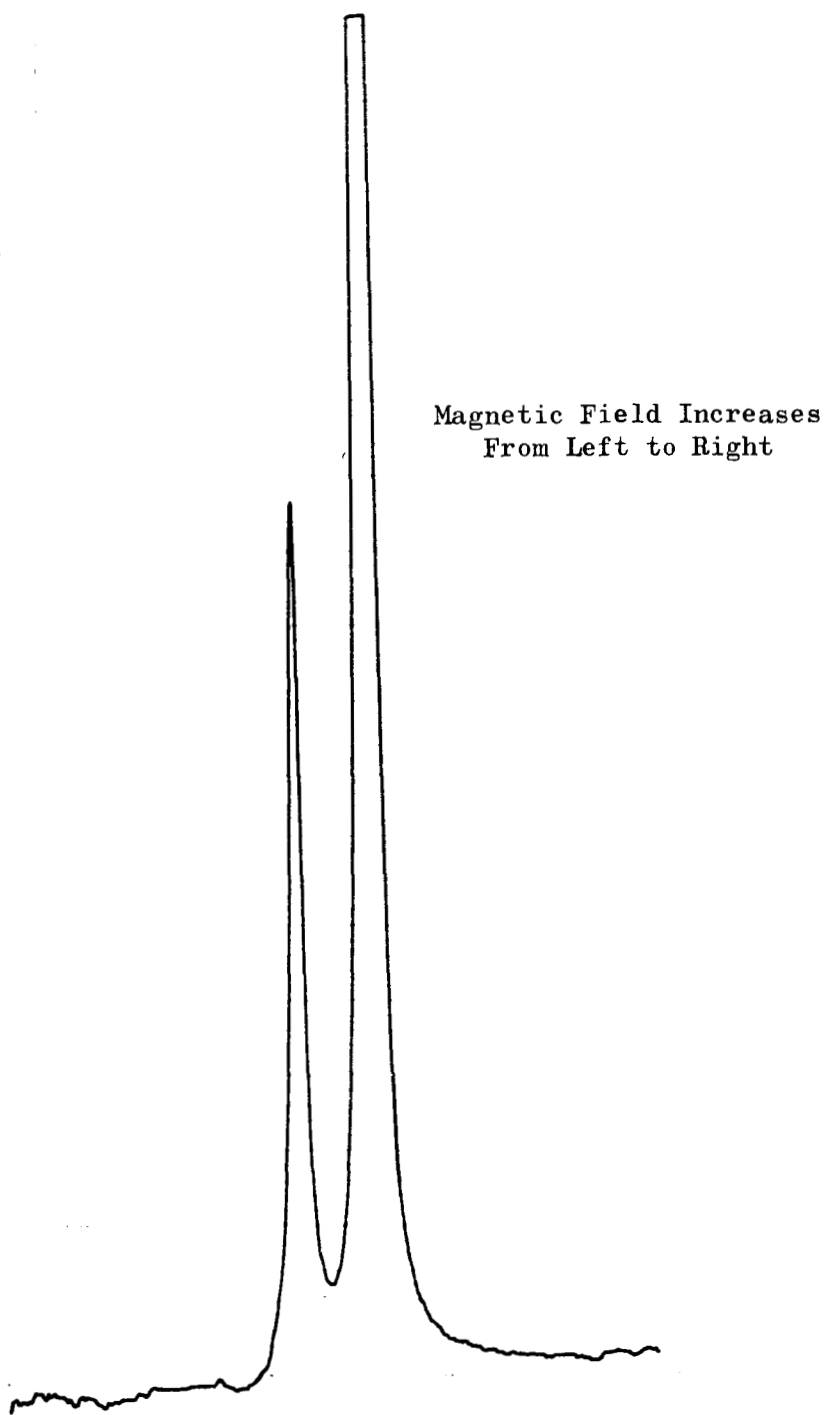


Figure 8. Proton Spectrum in 2 M LiCl + 1 M CuCl₂/DMF,
Freshly Prepared Specimen

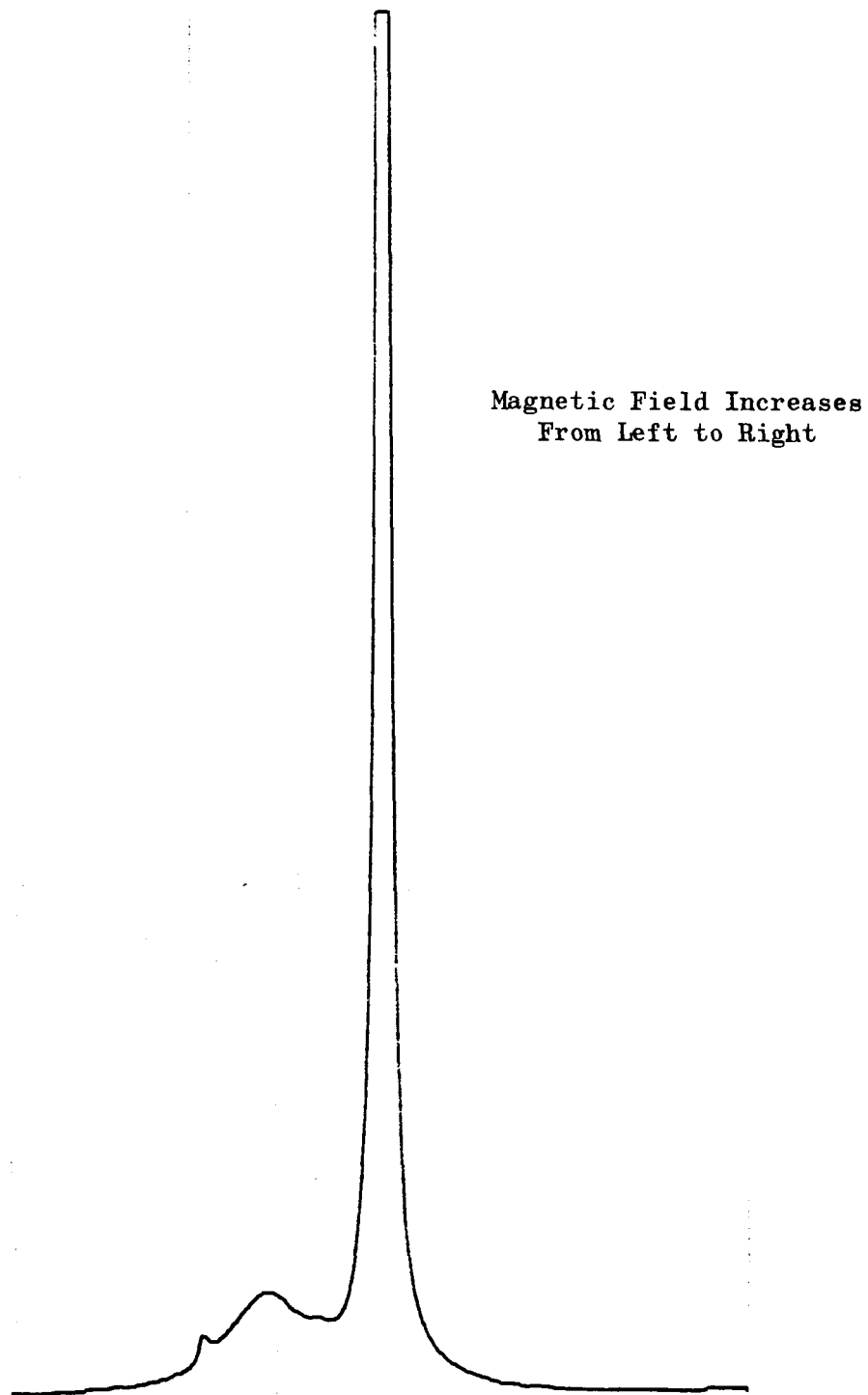


Figure 9. Proton Spectrum in 1 M CuCl_2/DMF , 1 Month After Preparation

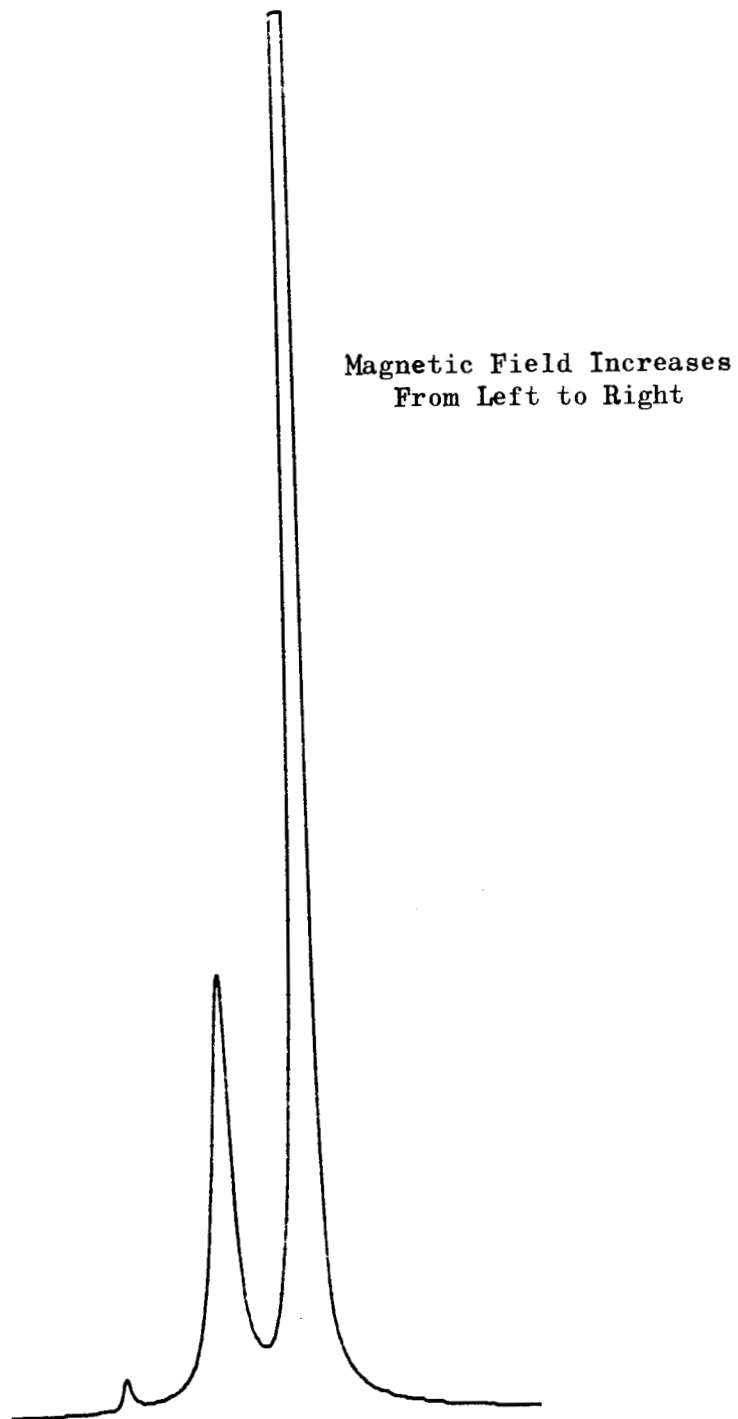


Figure 10. Proton Spectrum in 0.5 M LiCl + 1 M CuCl₂/DMF,
1 Month After Preparation

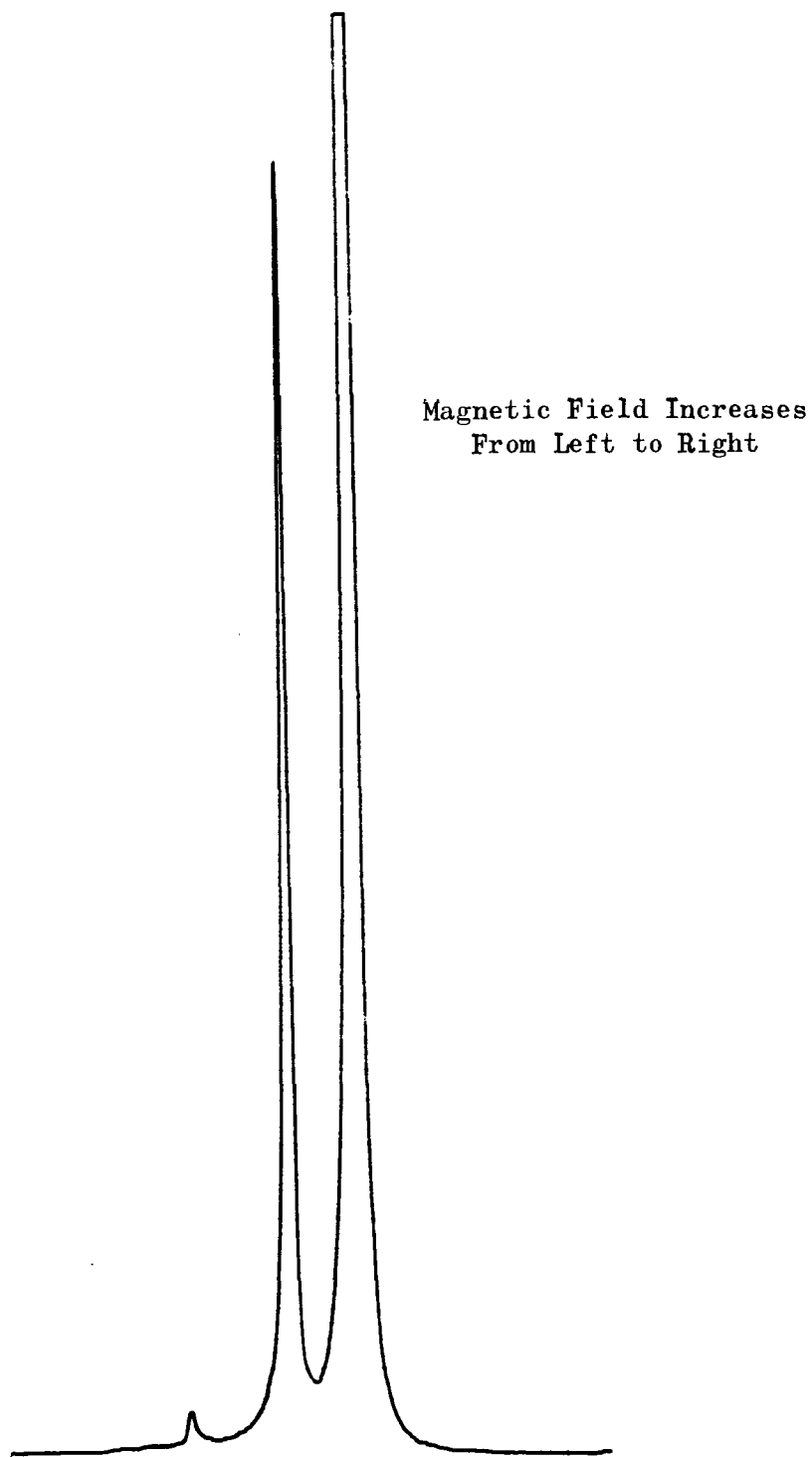


Figure 11. Proton Spectrum in 1 M LiCl + 1 M CuCl₂/DMF,
1 Month After Preparation

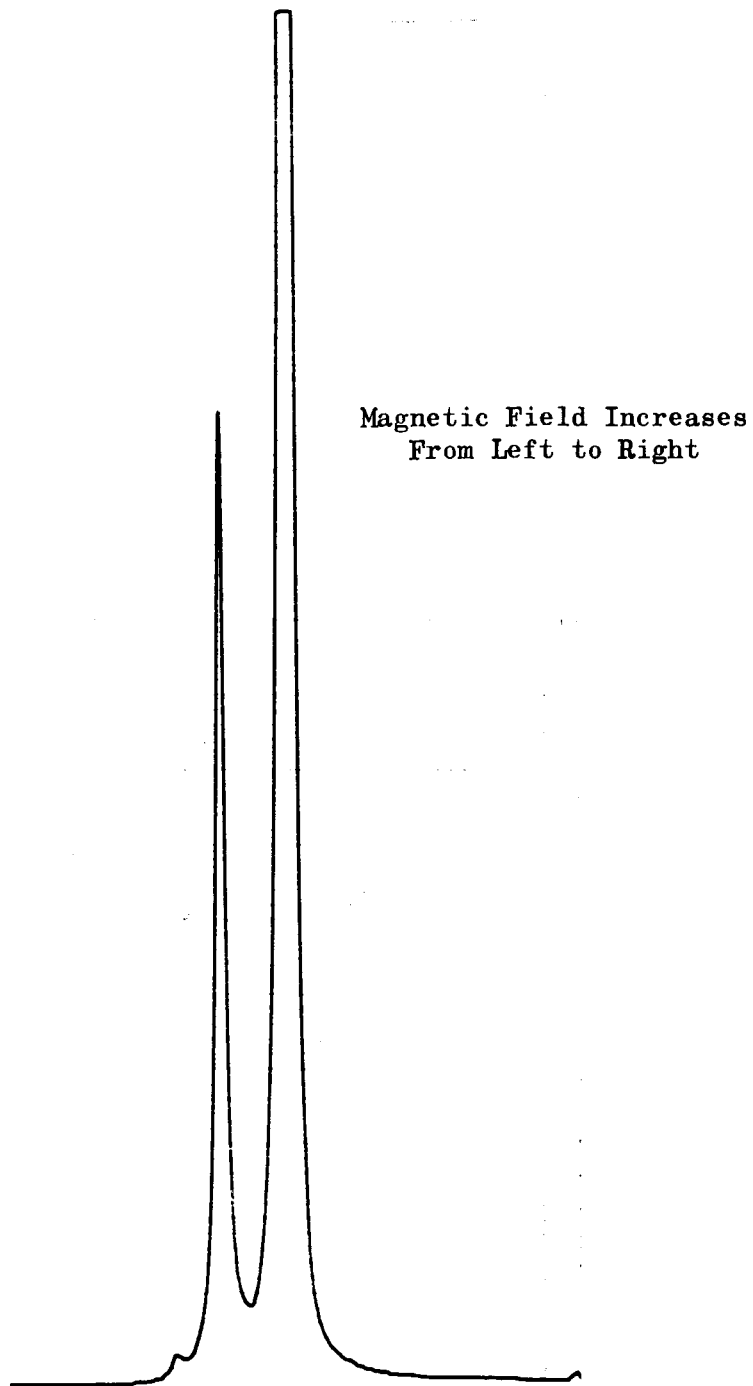


Figure 12. Proton Spectrum in 2 M LiCl + 1 M CuCl₂/DMF,
1 Month After Preparation

PHYSICAL PROPERTY DETERMINATIONS

Viscosity Measurements

Viscosity measurements on pure solvents were extended to 60 C as required for the interpretation of conductance data. The results, along with the 25 C values, are presented in Table 2.

Solubility Measurements

The solubility of LiCl in 1 M LiClO₄/PC #2-10 + 1000 ppm H₂O was determined as 0.071 M by chloride ion titration.

TABLE 2

VISCOSITIES OF SOLVENTS AT 25 and 60 C

Solvent	Temperature, C	Density, gm/cc	Viscosity, millipoise
PC #2-6	25	1.203	24.8*
PC #2-7	60	1.161	13.3
DMF #4-1	25	0.944	7.93**
DMF #5-1	60	0.910	5.35
AN #1-2	25	0.777	3.36*
AN #3-1	60	0.737	2.63

*Ref. 3

**Ref. 2

Conductance Measurements

The conductance measurements made during this report period are presented in Tables 3 through 10 and in Fig. 14 through 21.

The equivalent (molar) conductance values at infinite dilution, Λ_0 , of solutions containing tetrabutylammonium tetraphenylboride (TBA·TPB) are of interest, because the anion and the cation of this compound have equal mobilities. This has been assumed by Fuoss and Hirsch (Ref. 7), and they used this compound to determine the molar conductances of individual ions in propylene carbonate.

The presently determined Λ_0 value (Fig. 14) of $17.2 \text{ ohm}^{-1} \text{ equ}^{-1} \text{ cm}^2$ at 25 C compares reasonably well with their Λ_0 value of 17.144 ± 0.012 which was obtained by a more sophisticated extrapolation procedure (Ref. 7).

Prue and Sherrington (Ref. 8) based their determination of individual ion mobilities in dimethyl formamide on the Λ_0 value for tetrabutylammonium triphenylborofluoride, as suggested by Fowler and Kraus (Ref. 9). Their value for the molar conductance of the tetrabutylammonium ion ($\Lambda_0^+ = 26.2 \text{ ohm}^{-1} \text{ equ}^{-1} \text{ cm}^2$) compares with the present value of $\Lambda_0^+ = 25.5$ determined by use of TBA·TPB (see below). Because the triphenylborofluoride anion is smaller than the tetraphenylboride anion, the somewhat higher value obtained by Prue and Sherrington can be explained. Fuoss and Hirsch believe that the requirement of equal size of anion and cation is much more approximated in tetrabutylammonium tetraphenylboride than in tetrabutylammonium triphenylborofluoride.

The equivalent conductances at infinite dilution calculated for individual ions from the preceding data are listed in Table 11 for propylene carbonate, in Table 12 for dimethyl formamide, and in Table 13 for acetonitrile. The values for compounds from which the values for individual ions were calculated

TABLE 3

SPECIFIC CONDUCTANCE (λ) AND EQUIVALENT CONDUCTANCE (Λ)
OF TBA·TPB #1/PC #2-11

Concentration (c), molar	\sqrt{c} , molar ^{1/2}	λ (25 C), ohm ⁻¹ cm ⁻¹	Λ^* (25 C), ohm ⁻¹ equ ⁻¹ cm ²	λ (60 C), ohm ⁻¹ cm ⁻¹	Λ^* (60 C), ohm ⁻¹ equ ⁻¹ cm ²
0.004566	0.06760	6.983×10^{-5}	15.2	1.228×10^{-4}	26.8
0.002282	0.04778	3.618×10^{-5}	15.7	6.351×10^{-5}	27.6
0.001142	0.03380	1.876×10^{-5}	16.2	3.290×10^{-5}	28.4
0.000571	0.02390	9.706×10^{-5}	16.5	1.700×10^{-5}	28.9
0.000286	0.01691	5.064×10^{-6}	16.7	8.853×10^{-6}	29.2
0.000143	0.01196	2.674×10^{-6}	16.7	4.671×10^{-6}	29.2
0		2.899×10^{-7}	Extrapolated: $\Lambda_0 = 17.2$	4.899×10^{-7}	Extrapolated: $\Lambda_0 = 30.0$

Λ^* : Equivalent conductance, corrected for conductance of pure solvent

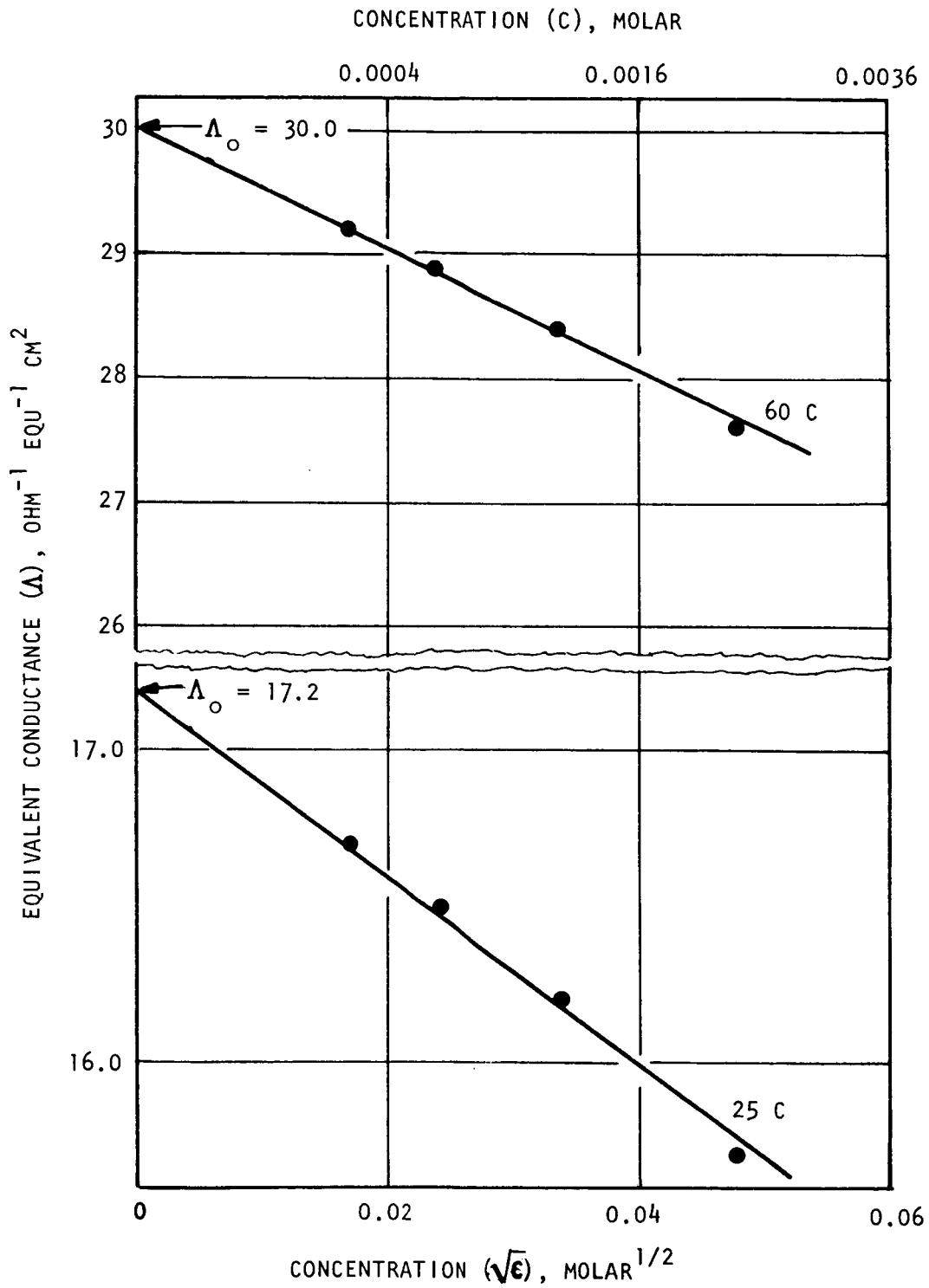


Figure 14. Equivalent Conductance of TBA·TPB in PC at 25 and 60 C

TABLE 4

SPECIFIC CONDUCTANCE (λ) AND EQUIVALENT CONDUCTANCE (Λ)
OF TBA-TPB #1/DMF #5-1

Concentration (c), molar	$\sqrt{c}, 1/2$ molar	λ (25 C), $\text{ohm}^{-1} \text{cm}^{-1}$	Λ^* (25 C), $\text{ohm}^{-1} \text{equ}^{-1} \text{cm}^2$	λ (60 C), $\text{ohm}^{-1} \text{cm}^{-1}$	Λ^* (60 C), $\text{ohm}^{-1} \text{equ}^{-1} \text{cm}^2$
0.005355	0.07285	2.300×10^{-4}	43.6	3.263×10^{-4}	60.7
0.002677	0.05171	1.203×10^{-4}	44.6	1.711×10^{-4}	63.4
0.001339	0.03659	6.273×10^{-5}	46.2	8.916×10^{-5}	65.6
0.000669	0.02587	3.261×10^{-5}	47.4	4.624×10^{-5}	67.2
0.000335	0.01830	1.728×10^{-5}	48.8	2.451×10^{-5}	69.3
0.000167	0.01292	9.193×10^{-5}	49.5	1.305×10^{-5}	70.3
0		9.266×10^{-7}	Extrapolated: $\Lambda_0 = 51.0$	1.312×10^{-6}	Extrapolated: $\Lambda_0 = 72.6$

Λ^* : Equivalent conductance, corrected for conductance of pure solvent.

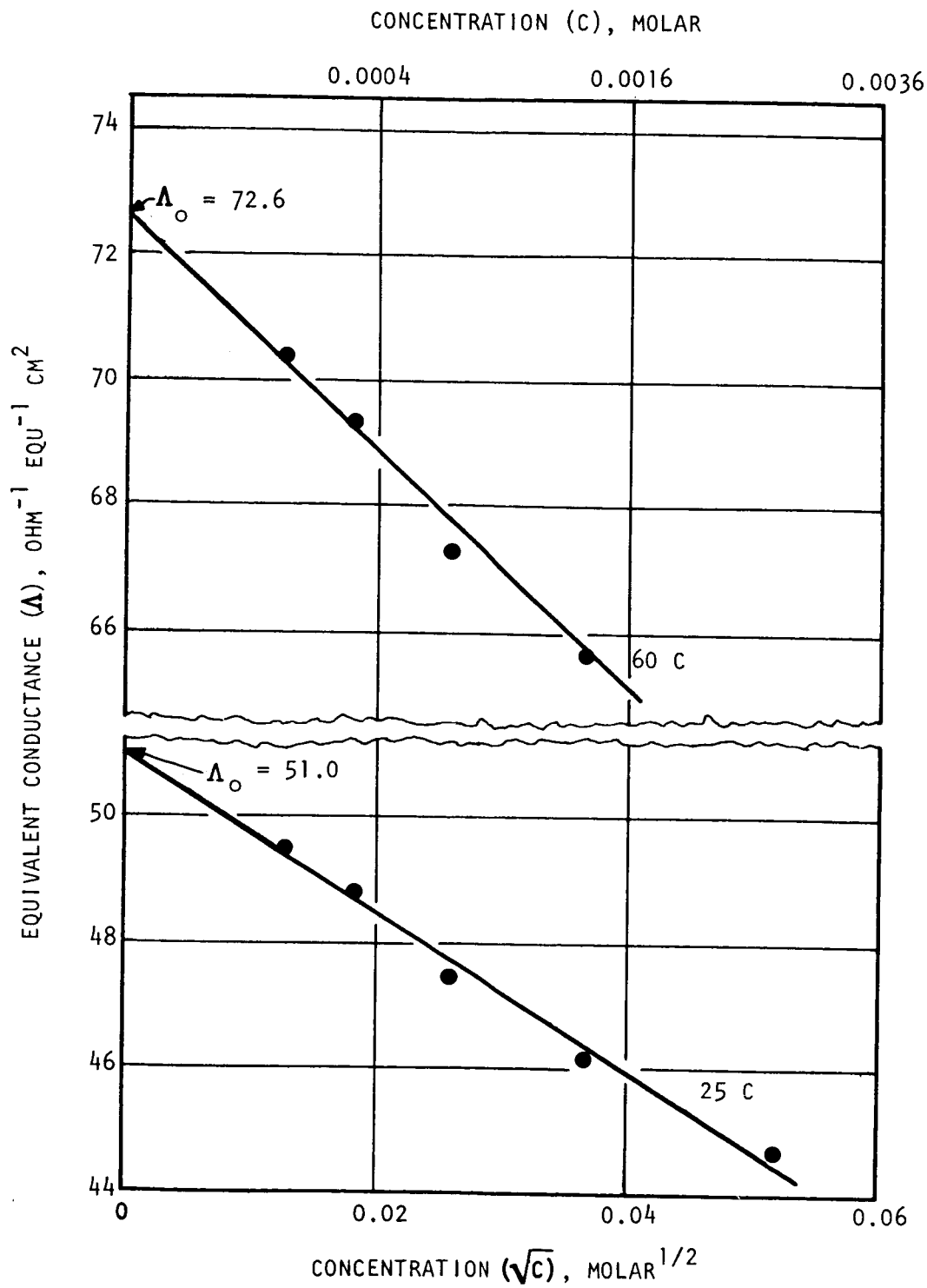


Figure 15. Equivalent Conductance of TBA·TPB in DMF at 25 and 60 C

TABLE 5
 SPECIFIC CONDUCTANCE (λ) AND EQUIVALENT CONDUCTANCE (Λ)
 OF TBA·TPB #1/AN #4-1

Concentration (C), molar	\sqrt{C} , molar ^{1/2}	λ (25 C), ohm ⁻¹ cm ⁻¹	Λ^* (25 C), ohm ⁻¹ equ ⁻¹ cm ²	λ (60 C), ohm ⁻¹ cm ⁻¹	Λ^* (60 C), ohm ⁻¹ equ ⁻¹ cm ²
0.003416	0.0584	3.498 x 10 ⁻⁴	102.2	4.532 x 10 ⁻⁴	132.4
0.001708	0.0413	1.820 x 10 ⁻⁴	106.1	2.361 x 10 ⁻⁴	137.6
0.000854	0.0292	9.453 x 10 ⁻⁵	109.8	1.225 x 10 ⁻⁴	142.3
0.000428	0.0207	4.879 x 10 ⁻⁵	112.2	6.335 x 10 ⁻⁵	145.7
0.000214	0.0146	2.535 x 10 ⁻⁵	114.9	3.279 x 10 ⁻⁵	148.6
0.000107	0.0103	1.326 x 10 ⁻⁵	116.7	1.713 x 10 ⁻⁵	150.7
0		7.747 x 10 ⁻⁷	Extrapolated: $\Lambda_0 = 119.6$	1.004 x 10 ⁻⁶	Extrapolated: $\Lambda_0 = 154.6$

Λ^* : Equivalent conductance, corrected for conductance of pure solvent

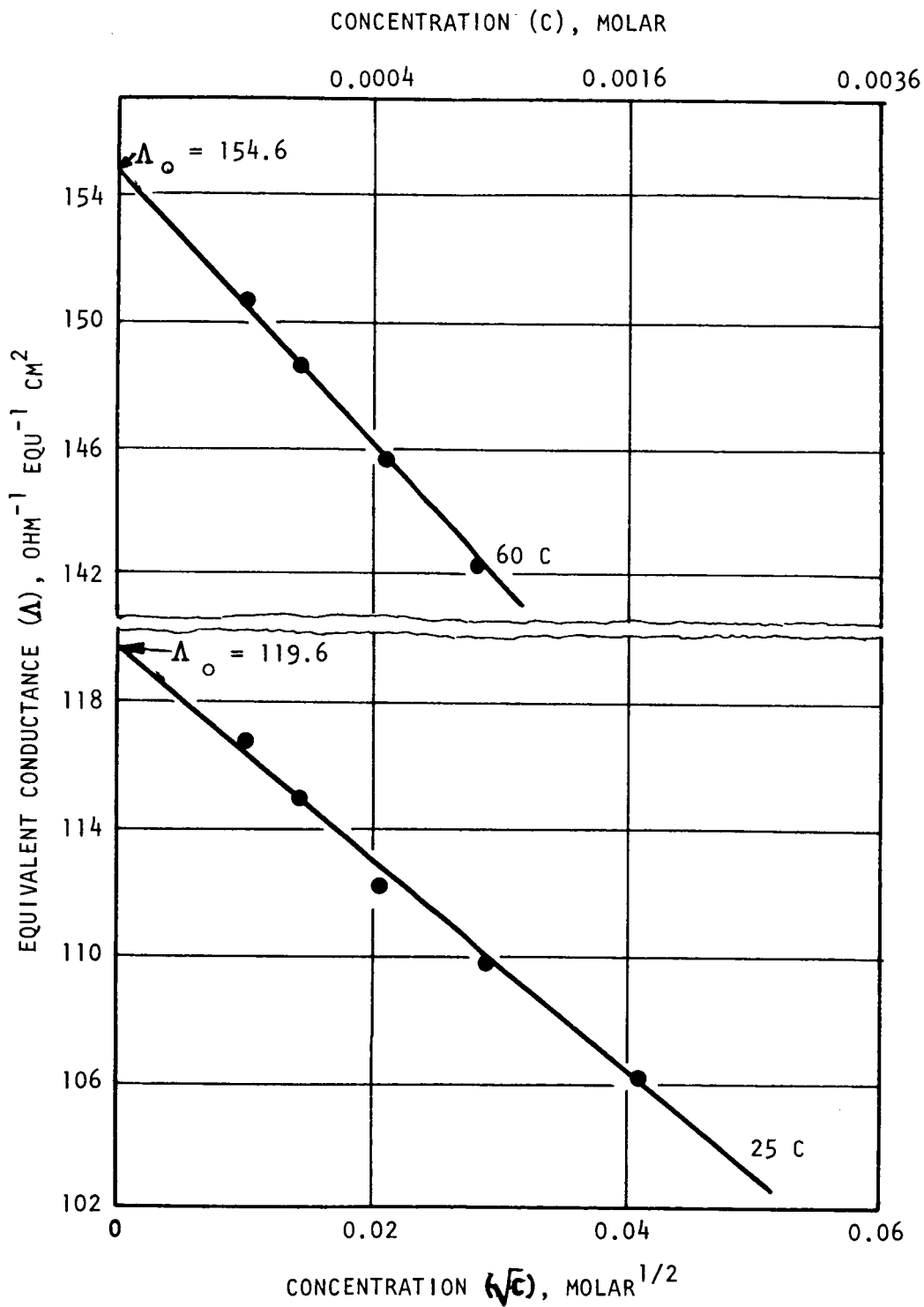


Figure 16. Equivalent Conductance of TBA-TPB in AN at 25 and 60 C

TABLE 6

SPECIFIC CONDUCTANCE (λ) AND EQUIVALENT CONDUCTANCE (Λ)
OF TBA·Br #1/PC #2-10

Concentration (c), molar	$\sqrt{c},$ molar ^{1/2}	λ (25 C), ohm ⁻¹ cm ⁻¹	Λ^* (25 C), ohm ⁻¹ equ ⁻¹ cm ²	λ (60 C), ohm ⁻¹ cm ⁻¹	Λ^* (60 C), ohm ⁻¹ equ ⁻¹ cm ²
0.01044	0.1022	2.555×10^{-4}	24.4	4.343×10^{-4}	41.5
0.00522	0.07225	1.329×10^{-4}	25.3	2.263×10^{-4}	43.1
0.00261	0.05108	6.859×10^{-5}	26.0	1.165×10^{-4}	44.1
0.001305	0.03611	3.544×10^{-5}	26.5	6.020×10^{-5}	45.0
0.0006525	0.02554	1.836×10^{-5}	26.8	3.126×10^{-5}	45.7
0.0003262	0.01806	9.673×10^{-6}	27.0	1.652×10^{-5}	46.2
0.0001631	0.01277	5.282×10^{-6}	27.1	9.007×10^{-6}	46.3
0		8.562×10^{-7}	Extrapolated: $\Lambda_0 = 27.5$	1.463×10^{-6}	Extrapolated: $\Lambda_0 = 47.3$

Λ^* : Equivalent conductance, corrected for conductance of pure solvent

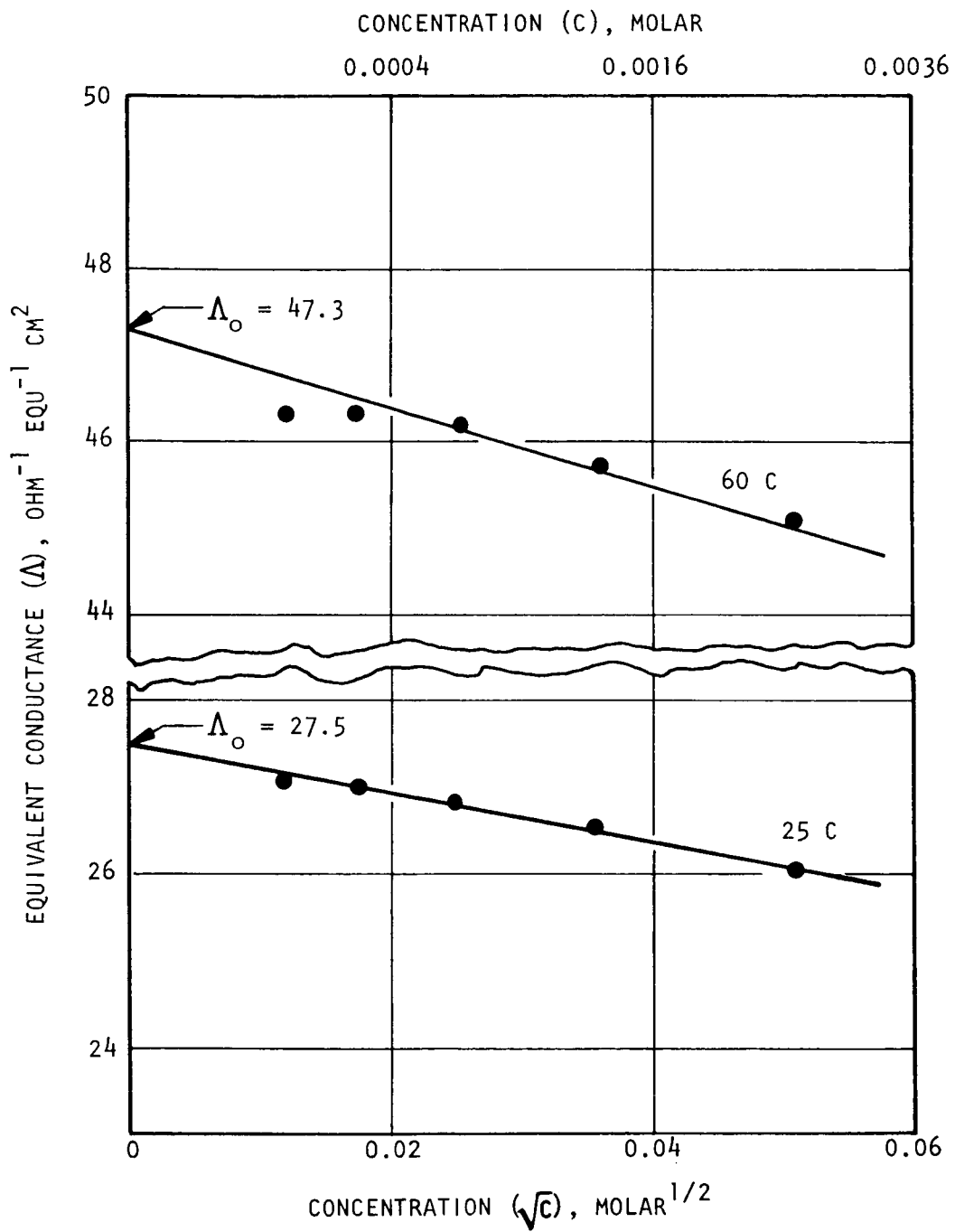


Figure 17. Equivalent Conductance of TBA·Br in PC at 25 and 60 C

TABLE 7

SPECIFIC CONDUCTANCE (λ) AND EQUIVALENT CONDUCTANCE (Λ)
OF TBA·Br #1/DMF #5-2

Concentration (C), molar	\sqrt{C} , molar ^{1/2}	λ (25 C), ohm ⁻¹ cm ⁻¹	Λ^* (25 C), ohm ⁻¹ equ ⁻¹ cm ²	λ (60 C), ohm ⁻¹ cm ⁻¹	Λ^* (60 C), ohm ⁻¹ equ ⁻¹ cm ²
0.00520	0.0721	3.544×10^{-4}	68.0	4.901×10^{-4}	94.1
0.00260	0.0510	1.863×10^{-4}	71.4	2.597×10^{-4}	99.5
0.00130	0.0361	9.725×10^{-5}	74.3	1.357×10^{-4}	103.6
0.000650	0.0255	5.133×10^{-5}	77.9	7.184×10^{-5}	109.1
0.000325	0.01803	2.690×10^{-5}	80.6	3.770×10^{-5}	113.0
0.000162	0.01275	1.358×10^{-5}	79.3	1.898×10^{-5}	110.8
0		6.870×10^{-7}	Extrapolated $\Lambda_0 = 87.0$	9.749×10^{-7}	Extrapolated $\Lambda_0 = 122.4$

Λ^* : Equivalent conductance, corrected for conductance of pure solvent

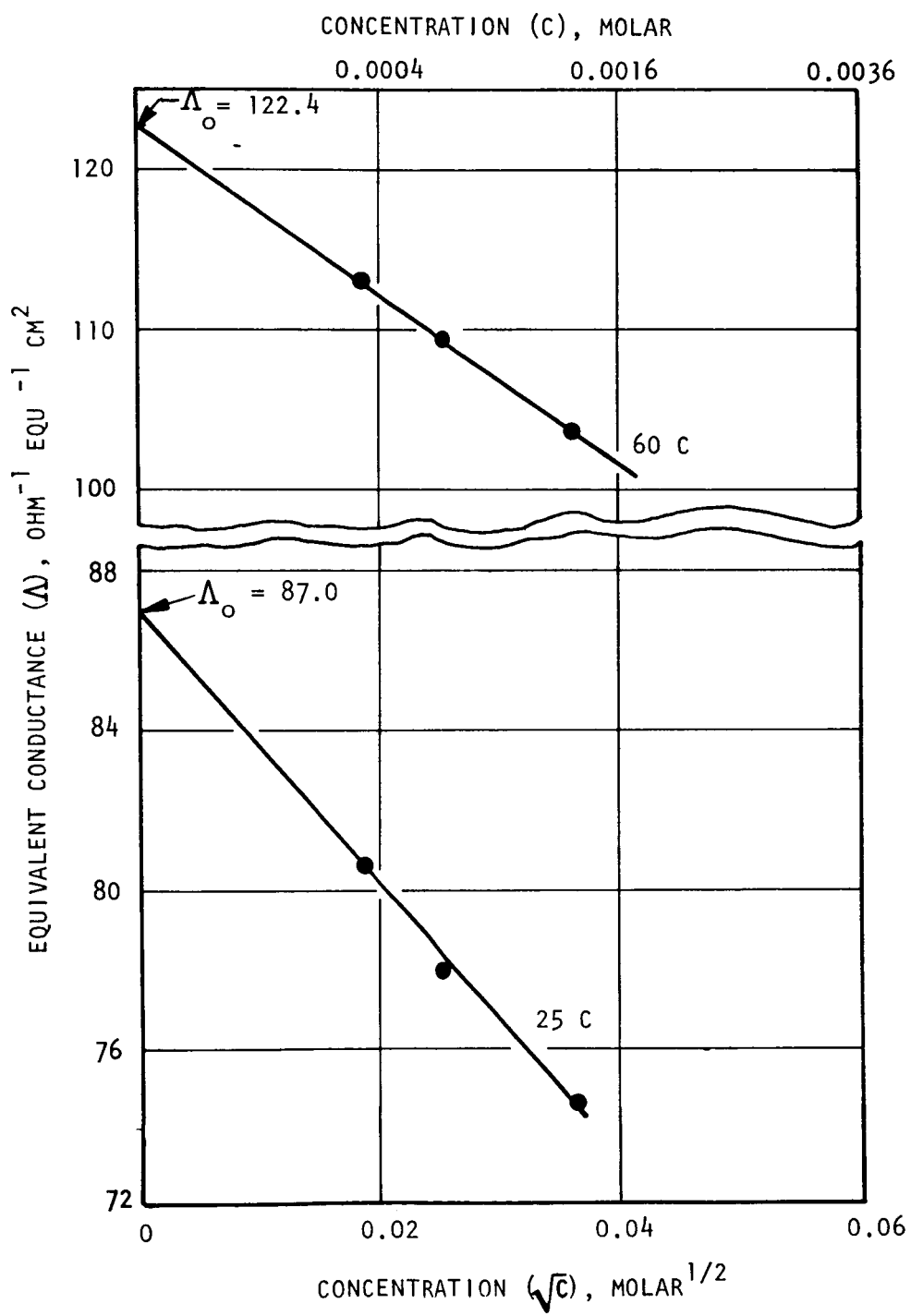


Figure 18. Equivalent Conductance of TBA·Br in DMF at 25 and 60 C

TABLE 8

SPECIFIC CONDUCTANCE (λ) AND EQUIVALENT CONDUCTANCE (Λ)
OF TBA·Br #1/AN #4-1

Concentration (C), molar	\sqrt{C} , $1/2$ molar	λ (25 C), $\text{ohm}^{-1} \text{cm}^{-1}$	Λ^* (25 C), $\text{ohm}^{-1} \text{equ}^{-1} \text{cm}^2$	λ (60 C), $\text{ohm}^{-1} \text{cm}^{-1}$	Λ^* (60 C), $\text{ohm}^{-1} \text{equ}^{-1} \text{cm}^2$
0.006112	0.0782	8.189×10^{-4}	133.9	1.045×10^{-3}	170.8
0.003056	0.0552	4.306×10^{-4}	140.6	5.524×10^{-4}	180.4
0.001528	0.0391	2.250×10^{-4}	146.7	2.895×10^{-4}	188.8
0.000764	0.0276	1.163×10^{-4}	151.2	1.492×10^{-4}	194.0
0.000382	0.0195	5.969×10^{-5}	154.2	7.679×10^{-5}	198.4
0.000191	0.0138	3.074×10^{-5}	156.8	3.951×10^{-5}	201.6
0		7.850×10^{-7}	Extrapolated: $\Lambda_0 = 161.6$	9.968×10^{-7}	Extrapolated: $\Lambda_0 = 207.8$

Λ^* : Equivalent conductance, corrected for conductance of pure solvent

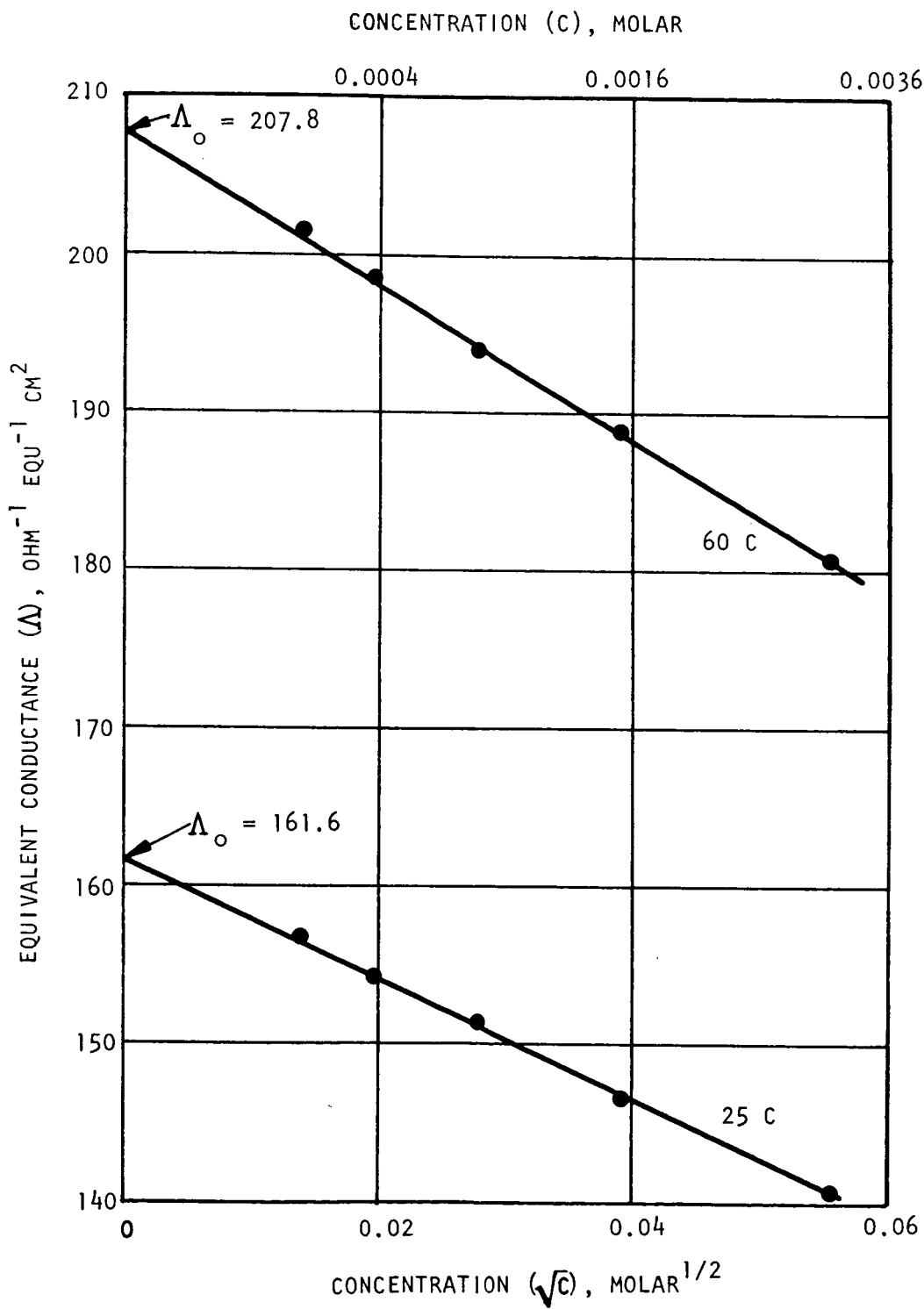


Figure 19. Equivalent Conductance of TBA·Br in AN at 25 and 60 C

TABLE 9

SPECIFIC CONDUCTANCE (λ) AND EQUIVALENT CONDUCTANCE (Λ)
OF LiBr #2/AN #4-1

Concentration (C), molar	\sqrt{C} , $1/2$ molar	λ (25 C), $\text{ohm}^{-1} \text{cm}^{-1}$	Λ^* (25 C), $\text{ohm}^{-1} \text{equ}^{-1} \text{cm}^2$	λ (60 C), $\text{ohm}^{-1} \text{cm}^{-1}$	Λ^* (60 C), $\text{ohm}^{-1} \text{equ}^{-1} \text{cm}^2$
0.003846	0.0620	3.444×10^{-4}	89.4	4.260×10^{-4}	110.5
0.001923	0.0439	1.957×10^{-4}	100.4	2.428×10^{-4}	125.7
0.000961	0.0310	1.051×10^{-4}	108.6	1.550×10^{-4}	137.4
0.000481	0.0219	5.547×10^{-5}	113.8	7.065×10^{-5}	144.9
0.000240	0.0155	2.870×10^{-5}	116.5	3.598×10^{-5}	146.0
0		7.422×10^{-7}		9.471×10^{-7}	
			Extrapolated: $\Lambda_0 = 127.2$		Extrapolated: $\Lambda_0 = 163.8$

Λ^* : Equivalent conductance, corrected for conductance of pure solvent

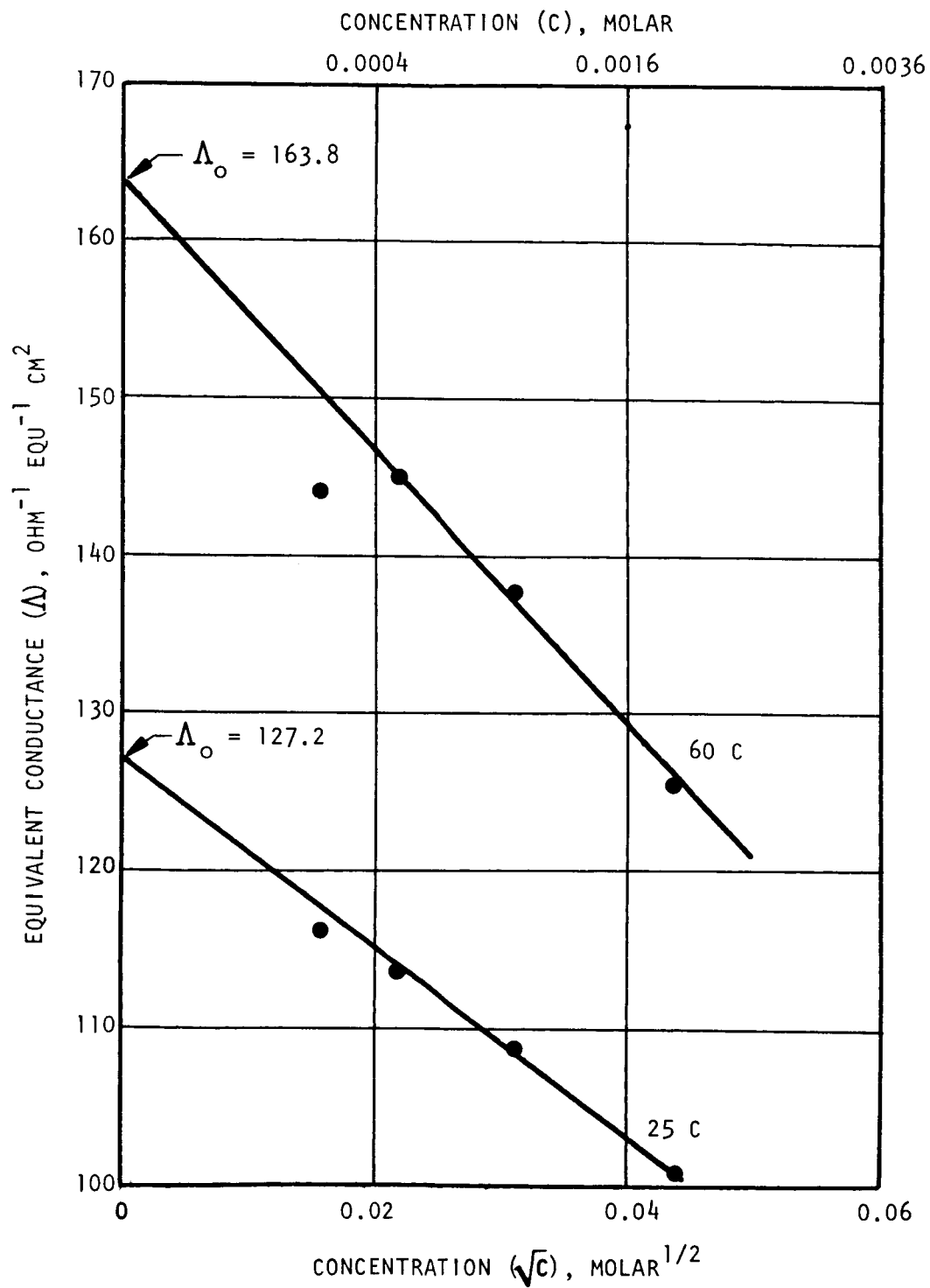


Figure 20. Equivalent Conductance of LiBr in AN at 25 and 60 C

TABLE 10

SPECIFIC CONDUCTANCE (λ) AND EQUIVALENT CONDUCTANCE (Λ)
OF LiClO_4 #2/DMF #5-2

Concentration (C), molar	\sqrt{C} , $1/2$ molar	λ (25 C), $\text{ohm}^{-1} \text{cm}^{-1}$	Λ^* (25 C), $\text{ohm}^{-1} \text{equ}^{-1} \text{cm}^2$	λ (60 C), $\text{ohm}^{-1} \text{cm}^{-1}$	Λ^* (60 C), $\text{ohm}^{-1} \text{equ}^{-1} \text{cm}^2$
0.00668	0.0817	4.474×10^{-4}	66.9	6.186×10^{-4}	92.4
0.00334	0.0578	2.338×10^{-4}	69.8	3.237×10^{-4}	96.6
0.001670	0.0417	1.208×10^{-4}	71.9	1.678×10^{-4}	99.8
0.000835	0.0289	6.272×10^{-5}	74.1	8.723×10^{-5}	103.1
0.0004175	0.0204	3.292×10^{-5}	76.9	4.538×10^{-5}	106.0
0.0002087	0.0144	1.698×10^{-5}	77.4	2.358×10^{-5}	107.3
0.0001044	0.0102	8.867×10^{-6}	77.1	1.235×10^{-5}	107.6
0		8.233×10^{-7}	Extrapolated: $\Lambda_0 = 80.4$	1.158×10^{-6}	Extrapolated: $\Lambda_0 = 111.1$

Λ^* : Equivalent conductance, corrected for conductance of pure solvent

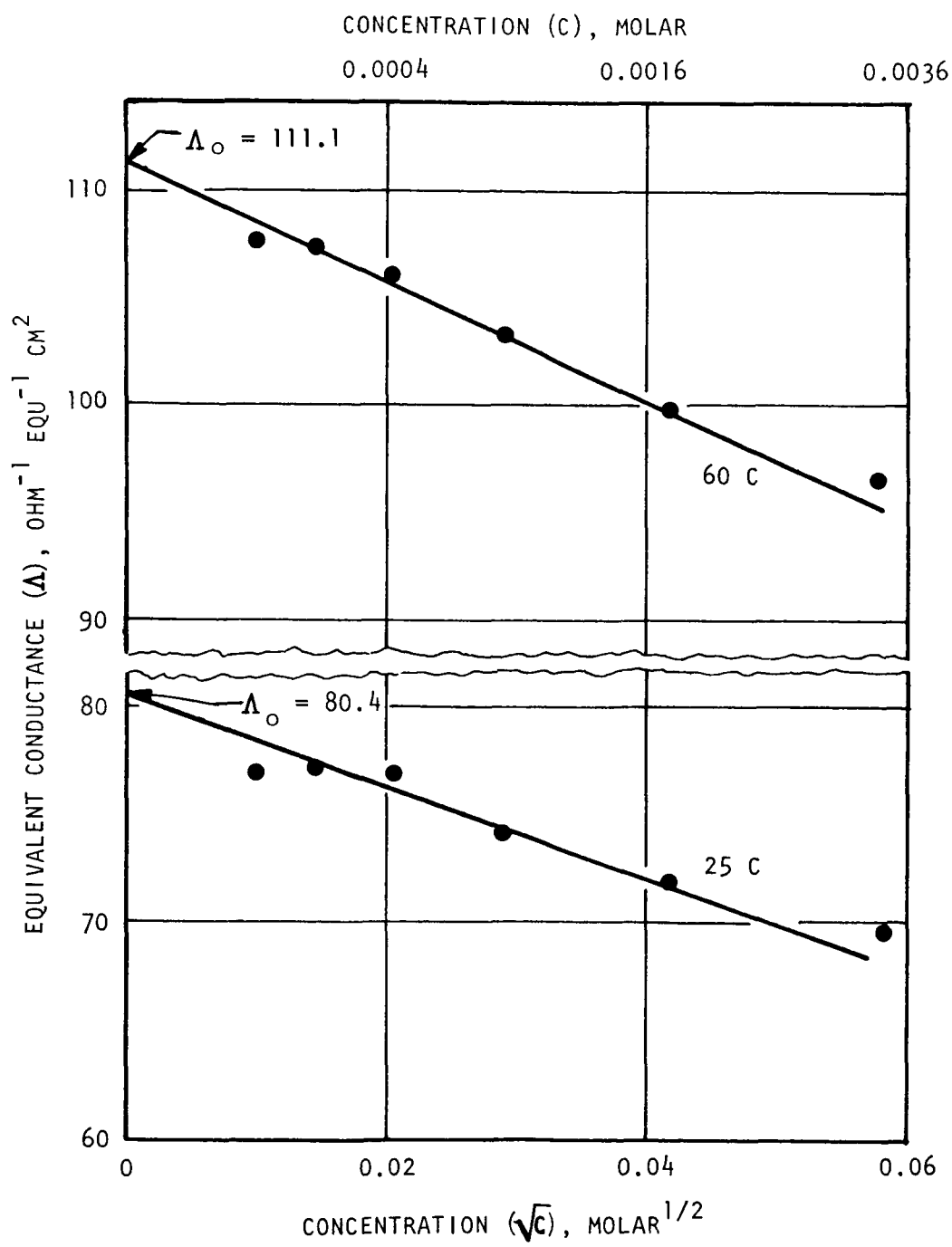


Figure 21. Equivalent Conductance of LiClO_4 in DMF at 25 and 60 C

TABLE 11

EQUIVALENT CONDUCTANCE AT INFINITE DILUTION (Λ_0) FOR SEVERAL
SOLUTES AND INDIVIDUAL IONS IN PROPYLENE CARBONATE

Solute	25 C		60 C	
	Λ_0 , ohm ⁻¹ equ ⁻¹ cm ²	Λ_0^+ or Λ_0^- , ohm ⁻¹ equ ⁻¹ cm ²	Λ_0 , ohm ⁻¹ equ ⁻¹ cm ²	Λ_0^+ or Λ_0^- , ohm ⁻¹ equ ⁻¹ cm ²
TBA·TPB	17.2 17.144 ± 0.012 (Ref. 7)		30.0	
TBA ⁺		8.6 8.57 (Ref. 7)		15.0
TPB ⁻		8.6 8.57 (Ref. 7)		15.0
TBA·Br	27.5		47.3	
Br ⁻		18.9		32.3
LiBr	26.2		44.8	
Li ⁺		7.3		12.5
LiClO ₄	25.6		43.1	
ClO ₄ ⁻		18.3		30.6
LiCl	26.2 (Ref. 3)		44.9 (Ref. 3)	
Cl ⁻		18.9		32.4
TMA·PF ₆	33.9 (Ref. 3) 36 at 25.5 ± 0.5 C (Ref. 10)		57.6	

TABLE 12
EQUIVALENT CONDUCTANCE AT INFINITE DILUTION (Λ_0) FOR SEVERAL
SOLUTES AND INDIVIDUAL IONS IN DIMETHYL FORMAMIDE

Solute	25 C		60 C	
	Λ_0 , ohm ⁻¹ equ ⁻¹ cm ²	Λ_0^+ or Λ_0^- , ohm ⁻¹ equ ⁻¹ cm ²	Λ_0 , ohm ⁻¹ equ ⁻¹ cm ²	Λ_0^+ or Λ_0^- , ohm ⁻¹ equ ⁻¹ cm ²
TBA·TPB	51.0		72.6	
TBA ⁺		25.5 26.2 (Ref. 8)		36.3
TPB ⁻		25.5		36.3
TBA·Br	87.0		122.4	
Br ⁻		61.5		86.1
LiBr	79.1		111.0	
Li ⁺		17.6 25.0 (Ref. 8)		24.9
LiClO ₄	80.4 77.42 (Ref. 8)		111.1	
ClO ₄ ⁻		62.8		86.7
LiCl	84.0 (Ref. 2) 80.15 (Ref. 8)		118.0 (Ref. 2)	
Cl ⁻		66.4 55.1 (Ref. 8)		93.0
TMA·PF ₆	90.5 (Ref. 3)		126.0 (Ref. 3)	

TABLE 13

EQUIVALENT CONDUCTANCE AT INFINITE DILUTION (Λ_0) FOR SEVERAL
SOLUTES AND INDIVIDUAL IONS IN ACETONITRILE

Solute	25 C		60 C	
	Λ_0 , ohm ⁻¹ equ ⁻¹ cm ²	Λ_0^+ or Λ_0^- , ohm ⁻¹ equ ⁻¹ cm ²	Λ_0 , ohm ⁻¹ equ ⁻¹ cm ²	Λ_0^+ or Λ_0^- , ohm ⁻¹ equ ⁻¹ cm ²
TBA · TPB	119.6 119.60 (Ref. 11)		154.6	
TBA ⁺		59.8		77.3
TPB ⁻		59.8		77.3
TBA · Br	161.6		207.8	
Br ⁻		101.8		130.5
LiBr	127.2		163.8	
Li ⁺		25.4 77.25 (Ref. 12)		33.3
LiClO ₄	172 183.25 (Ref. 12)		220	
ClO ₄ ⁻		147 106 (Ref. 13)		187
TMA · PF ₆	402 (Ref. 3)		503 (Ref. 3)	

are also listed. Values for the tetramethylammonium ion and the hexafluorophosphate ion cannot be given yet, because an appropriate link, e.g., data on LiPF_6 , $\text{TMA}\cdot\text{ClO}_4$, or $\text{TMA}\cdot\text{Br}$, is missing.

The most significant result is the low mobility of the lithium ion in all three solvents. From the preceding results, transference numbers for the Li^+ ion in LiClO_4 solutions can be calculated, $t_+ = 0.28$ and 0.29 in propylene carbonate at 25 and 60 C, respectively; $t_+ = 0.22$ in dimethyl formamide at 25 and 60 C; and $t_+ = 0.15$ in acetonitrile at 25 and 60 C. The values obtained for 1 molar solutions by Hittorf experiments at room temperature are $t_+ = 0.19$ in propylene carbonate (Ref. 4); $t_+ = 0.25$ in dimethyl formamide (Ref. 4); and $t_+ = 0.32$ in acetonitrile (presented later in this report). If it is considered that relatively large experimental uncertainties are involved in the Hittorf experiments, at least the values for propylene carbonate and dimethyl formamide are in good agreement with the ones calculated at infinite dilution. The deviation of the two values is somewhat larger in the case of acetonitrile. A higher ionic conductance has been given in the literature [$\Lambda_0^+ = 77.25 \text{ ohm}^{-1} \text{ equ}^{-1} \text{ cm}^2$ (Ref. 12)]. This value is based on the ionic conductance of the perchlorate ion, $\Lambda_0^- = 106$, as given in an early paper by Lange (Ref. 13). Lange does not include a value for the lithium ion in his list; his value for the potassium ion in acetonitrile is $\Lambda_0^+ = 77$, and the corresponding value for lithium may very well be lower. A possible cause for the discrepancies may consist in a significant difference of the water content of the solvents used for the studies.

The Walden product ($\Lambda_0 \cdot \eta$) was calculated for some salts and ions; the values are listed in Table 14. The Walden product is approximately identical for $\text{TBA}\cdot\text{TPB}$ in all three solvents. This is consistent with the assumption that the ions of this salt are unsolvated. The bromide ion and the lithium ion appear to be solvated to a greater extent in acetonitrile than in the other solvents, whereas the perchlorate ion does not show significant differences.

A more detailed evaluation will be given when the data are more complete.

TABLE 14

WALDEN PRODUCT ($\Lambda_o \cdot \eta$) FOR SEVERAL SOLUTES
AND IONS IN PC, DMF, AND AN

Solute	Solvent	T, C	η , millipoise	Λ_o , $\text{ohm}^{-1} \text{equ}^{-1} \text{cm}^2$	$\Lambda_o \cdot \eta$	
TBA · TPB	PC	25	24.8	17.2	427	
		60	13.32	30.0	400	
	DMF	25	7.93	51.0	404	
		60	5.35	72.6	388	
	AN	25	3.36	119.6	402	
		60	2.63	154.6	407	
	TBA · Br	PC	25	24.8	27.5	682
			60	13.32	47.3	630
DMF		25	7.93	87.0	690	
		60	5.35	122.4	655	
AN		25	3.36	161.6	543	
		60	2.63	207.8	547	
Br^-		PC	25	24.8	18.9	469
			60	13.32	32.3	430
	DMF	25	7.93	61.5	488	
		60	5.35	86.1	461	
	AN	25	3.36	101.8	342	
		60	2.63	130.5	343	
	Li^+	PC	25	24.8	7.3	181
			60	13.32	12.5	167
DMF		25	7.93	17.6	140	
		60	5.35	24.9	133	
AN		25	3.36	25.4	85	
		60	2.63	33.3	88	
ClO_4^-		PC	25	24.8	18.3	454
			60	13.32	30.6	408
	DMF	25	7.93	62.8	498	
		60	5.35	86.7	464	
	AN	25	3.36	147.0	494	
		60	2.63	187.0	492	

Transference Experiments

The Hittorf cells and the procedure used in these experiments were described previously (Ref. 3).

The results obtained with a 1 M LiClO_4/AN electrolyte are summarized in Table 15. A transference number of $t_+ = 0.38$ was calculated from the loss of lithium in the anolyte. Assuming no deposition of lithium at the cathode, the increase in the concentration of the lithium in the catholyte corresponds to $t_+ = 0.26$. The average value of $t_+ = 0.32$ is selected as the final value.

TABLE 15
HITTORF EXPERIMENTS WITH 1 M LiClO_4/AN

Solute	Solvent	Total Charge, coulombs	Loss of Li in Anolyte, moles	t_+ (From Anolyte Data)	Gain of Li in Catholyte, moles	t_+ (From Catholyte Data)
1 M LiClO_4 #2	AN #3-1	370	1.46×10^{-3} *	0.38	9.91×10^{-4} **	0.26

*Determined concentration of anolyte at conclusion of experiment: 0.951 M

**Determined concentration of catholyte at conclusion of experiment: 1.035 M

Two Hittorf experiments were performed with 1 M $\text{AlCl}_3 + 0.7$ M LiCl/PC ; the results are summarized in Table 16. The interpretation of the results is only qualitative or semiquantitative because more than one Al species probably exists. Aluminum was found to accumulate in the anode compartment during the experiment; lithium migrated away from the anode. The results

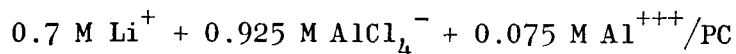
TABLE 16

HITTORF EXPERIMENT WITH ELECTROLYTES CONTAINING
LiCl AND AlCl₃ IN PC AND AN

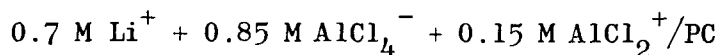
Run No.	Solutes	Solvent	Total Charge, coulombs	Change of Lithium Content in Anolyte	Change of Aluminum Content in Anolyte
1	0.7 M LiCl #2 + 1 M AlCl ₃ #3	PC #2-10	432	-5.8 x 10 ⁻⁴ mole (a) (corresponds to n x 56 coulombs)	+3.3 x 10 ⁻³ mole (b) (corresponds to n x 318 coulombs)
2	0.7 M LiCl #2 + 1 M AlCl ₃ #3	PC #2-10	461	-9.5 x 10 ⁻⁴ mole (c) (corresponds to n x 92 coulombs)	+2.52 x 10 ⁻³ mole (d) (corresponds to n x 244 coulombs)
3	0.7 M LiCl #2 + 1 M AlCl ₃ #3	AN #4-1	461	-1.75 x 10 ⁻³ mole (e) (corresponds to n x 175 coulombs)	+3.04 x 10 ⁻³ mole (f) (corresponds to n x 294 coulombs)

- (a) Determined concentration of lithium at conclusion of experiment: 0.68 M
 (b) Determined concentration of aluminum at conclusion of experiment: 1.11 M
 (c) Determined concentration of lithium at conclusion of experiment: 0.67 M
 (d) Determined concentration of aluminum at conclusion of experiment: 1.08 M
 (e) Determined concentration of lithium at conclusion of experiment: 0.64 M
 (f) Determined concentration of aluminum at conclusion of experiment: 1.105 M

are consistent with the quantitative formation of AlCl_4^- from Cl^- ions introduced by the LiCl with some positive Al species remaining, resulting in an electrolyte composition of



or



The former is consistent with NMR results previously reported (Ref. 4). Two Al^{27} species are formed in 1 M AlCl_3/PC , and addition of LiCl to the solution converted one of these species to the other. Assuming the species to be AlCl_4^- and complexed Al^{+++} , it would require 1 M LiCl to convert all Al containing species of a 1 M AlCl_3 solution to AlCl_4^- . Thus in 0.7 M LiCl + 1 M AlCl_3/PC most of the Al species are expected to be converted to AlCl_4^- but there should be some complexed Al species remaining.

Results similar to these were obtained with a 1 M AlCl_3 + 0.7 M LiCl/AN electrolyte; they are also presented in Table 16.

Sonic Velocity Determination

One method of determining the primary solvation number for electrolytes requires a knowledge of compressibility values in the pure solvent and the electrolyte solutions. The compressibilities are obtained by measuring the speed of sound in the liquids of interest and then using the following relationship

$$\beta_s = \frac{1}{\rho C^2}$$

where

β_s = adiabatic compressibility

ρ = density

C = sonic velocity

The apparatus illustrated in Fig. 22 is being used to measure the velocity of sound in various nonaqueous solutions of interest. The electronic equipment consists of a Sperry type UR Reflectoscope, a Tektronix model 535A oscilloscope, and a 5 MHz lithium sulphate ultrasonic transducer. The Reflectoscope generates a 5 MHz pulse-modulated radio-frequency signal which is fed simultaneously to the transducer and the oscilloscope. The sound waves, emanating from the transducer, travel through a known distance of liquid to the bottom of the cell at which point they are reflected back to the transducer. The initial and reflected waves are displayed on the oscilloscope, thus allowing measurement of time required for the ultrasonic waves to traverse the known distance of test fluid.

The distance between the transducer face and the bottom of the cell was determined by calibration of the apparatus at 25 C using distilled water as a standard (Ref. 14). During the calibration runs and subsequent runs, the cell was allowed to reach thermal equilibrium in a mineral oil bath which was thermostated at 25 ± 0.01 C. The estimated accuracy of the values determined is 0.2 percent.

Sonic velocity measurements at 25 C were conducted in pure PC and three solutions. The results of these measurements are presented in Table 17. An interpretation of the results will be made after more data have been collected.

Measurements of Diffusion Coefficients

The method described by Wall (Ref. 15 through 17) is being investigated. It involves measurement of the weight change of a suspended disk as a

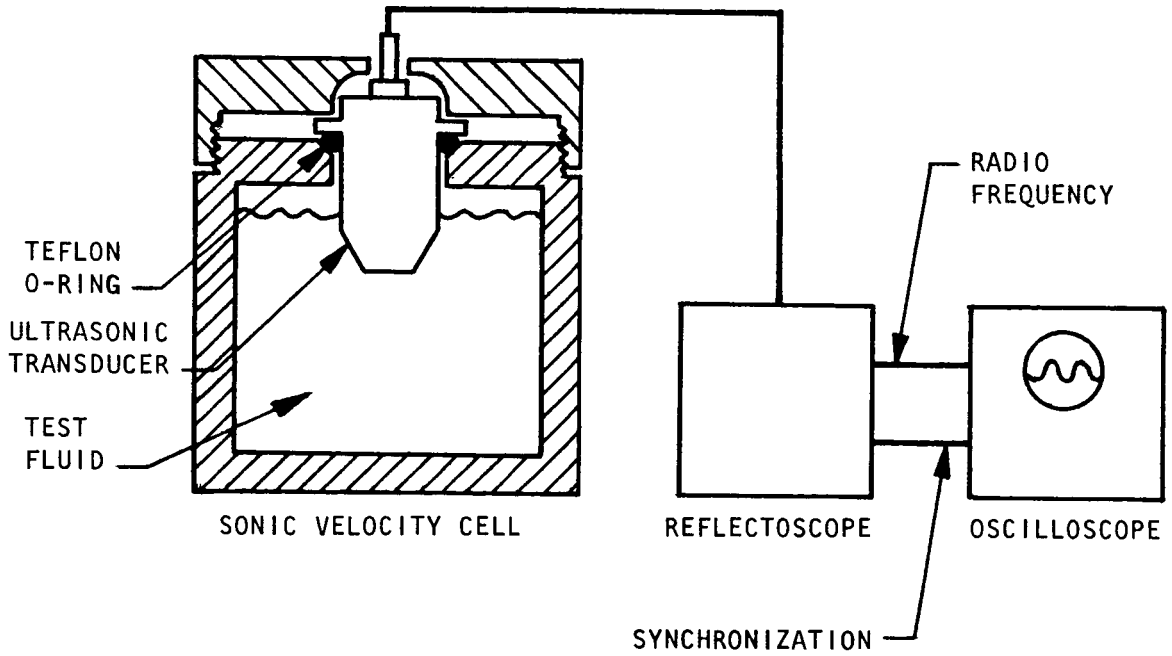


Figure 22. Determination of Sonic Velocities

function of time. Disks recommended by Wall have been obtained and are being calibrated.

TABLE 17

VELOCITY OF SOUND IN PROPYLENE CARBONATE ELECTROLYTES

Solute	Solvent	Sonic Velocity, m/sec at 25 C
None	PC #2-11	1440
1.0 M LiClO_4 #2	PC #2-11	1481
0.125 M $\text{TMA} \cdot \text{PF}_6$ #1	PC #2-11	1438
0.0227 M $\text{TMA} \cdot \text{F}$ #2	PC #2-11	1443

An attempt is being made to determine diffusion coefficients of cathodically active species in solution by chronopotentiometry. In a 1 M LiClO_4 + 0.0014 M CuCl_2 /PC electrolyte, a correlation between transition times and the presence of copper species could not be made. It is intended to study next a LiCl/DMF electrolyte containing various amounts of CuCl_2 .

Measurement of Vapor Pressure

A gas-saturation method was investigated to measure vapor pressures. Nitrogen was bubbled through a wash-bottle containing DMF, and the solvent was condensed in a liquid nitrogen trap. Solvent corresponding to only 30 percent of the vapor pressure of DMF was recovered. An improved saturator is being designed.

Measurement of Dielectric Constants

The microwave method used (at approximately 10 and 25 GHz) is based on measurement of standing wave position and amplitude. This wave results

from interference of a reference wave and the wave traveling through the sample.

Calculations have been carried out to relate the measured quantities to the dielectric constant κ ($\kappa = \kappa' - i\kappa''$, where κ' is the dispersive part and κ'' the absorptive part). Graphs of amplitude vs phase with κ' and κ'' as parameters have been computed for $70 > \kappa' > 40$, $40 > \kappa'' > 20$ at a frequency of 8.490 GHz.

Additional computation will be needed to extend the range to lower κ' and κ'' values.

For the 10 GHz setup, an E-H tee is used to split the wave into reference and sample waves. This apparatus has been partially checked out. Using a ferrite isolator and a phase shifter, the coupling initially noticed between the reference and sample arm has been reduced. The isolator is employed to attenuate to a large extent the wave reflected from the sample cell. Measurements have shown no significant coupling between the two arms. The dielectric constant (κ') of water could be obtained to approximately a 3 percent accuracy; the absorptive part, however, appears to be 20 percent low. Work is in progress to decrease the error in κ'' .

WORK PLANNED FOR NEXT QUARTER

PREPARATION OF ELECTROLYTES

Work on this task will continue. Further solutes such as BF_3 , PF_5 , $\text{TMA}\cdot\text{F}$, and CuF_2 will be characterized.

STRUCTURAL STUDIES

Work on the $\text{LiCl} + \text{CuCl}_2$ system will continue. This will include continued investigation of the H^1 NMR spectra and an initiation of the investigation of EPR spectra. The Cu^{63} resonance will be also studied if possible. Low temperature H^1 spectra from $\text{LiCl} + \text{AlCl}_3/\text{AN}$ will be investigated. The measurement of the chemical shift of Cl^{35} and Li^7 in electrolytes containing LiClO_4 and LiCl will continue.

PHYSICAL PROPERTY DETERMINATIONS

Determinations of physical properties will continue. Individual ion mobilities of some additional ions will be determined. Sonic velocity measurements will be extended to electrolytes based on DMF and AN. Initiated work on measurement of diffusion coefficients, heats of solution, and dielectric constants will be pursued further.

REFERENCES

1. NASA CR-72106, Properties of Nonaqueous Electrolytes, First Quarterly Report, by R. Keller, J. N. Foster, and J. M. Sullivan, Rocketdyne, a Division of North American Aviation, Inc., Canoga Park, California, October 1966.
2. NASA CR-72168, Properties of Nonaqueous Electrolytes, Second Quarterly Report, by R. Keller, J. N. Foster, J. D. Ray, and J. M. Sullivan, Rocketdyne, a Division of North American Aviation, Inc., Canoga Park, California, January 1967.
3. NASA CR-72065, Properties of Nonaqueous Electrolytes, Third Quarterly Report, by R. Keller, J. N. Foster, J. F. Hon, and J. M. Sullivan, Rocketdyne, a Division of North American Aviation, Inc., Canoga Park, California, April 1967.
4. NASA CR-72277, Properties of Nonaqueous Electrolytes, Fourth Quarterly Report, by R. Keller, J. N. Foster, J. F. Hon, O. F. Kalman, and J. M. Sullivan, Rocketdyne, a Division of North American Aviation, Inc., Canoga Park, California, July 1967.
5. Fuoss, R. M., J. B. Berkowitz, E. Hirsch, and S. Petrucci, Nat. Acad. Sci. U.S., Proc., 44, 27 (1958).
6. Klamberg, F., J. P. Hunt, and H. W. Dodger, Inorg. Chem., 2, 139 (1963).
7. Fuoss, R. M., and E. Hirsch, J. Amer. Chem. Soc., 82, 1013 (1960).
8. Prue, J. E., and P. J. Sherrington, Trans. Faraday Soc., 57, 1795 (1961).
9. Fowler, D. L., and C. A. Kraus, J. Amer. Chem. Soc., 62, 2237 (1940).
10. Lithium - Nickel Fluoride Secondary Battery Investigation, Fifth Quarterly Technical Progress Report, by A. Lyall, H. Seiger, J. Orshich, and R. Michaels, Gulton Industries, Inc., Metuchen, New Jersey, August 1967.

11. Accascina, F., S. Petrucci, and R. M. Fuoss, J. Amer. Chem. Soc., 81, 1301 (1959).
12. Minc, S., and L. Werblan, Electrochim. Acta., 7, 257 (1962).
13. Lange, J., Z. Phys. Chem., A188, 284 (1941).
14. Greenspan, M. and C. E. Tschiegg, "Tables of the Speed of Sound in Water," J. Acoust. Soc. Am., 31, 75 (1959).
15. Wall, F. T., P. F. Grieges, and C. W. Childer, J. Am. Chem. Soc., 74, 3562 (1952).
16. Wall, F. T. and C. W. Childer, J. Am. Chem. Soc., 75, 3550 (1953).
17. Taylor, G. B. and F. T. Wall, J. Am. Chem. Soc., 75, 6340 (1953).

REPORT DISTRIBUTION LIST FOR
CONTRACT NO. NAS3-8521

National Aeronautics & Space Administration (3)
Scientific & Technical Information Facility
Post Office Box 33
College Park, Maryland 20740
Attention: NASA Representative

National Aeronautics & Space Administration (1)
Washington, D. C. 20546
Attention: E. M. Cohn (RNW)

National Aeronautics & Space Administration (1)
Washington, D. C. 20546
Attention: A. M. Greg Andrus (FC)

National Aeronautics & Space Administration (1)
Goddard Space Flight Center
Greenbelt, Maryland 20771
Attention: Thomas Hennigan (Code 716.2)

National Aeronautics & Space Administration (1)
Goddard Space Flight Center
Greenbelt, Maryland 20771
Attention: E. R. Stroup (Code 636.2)

National Aeronautics & Space Administration (1)
Goddard Space Flight Center
Greenbelt, Maryland 20771
Attention: Joseph Sherfey (Code 735)

National Aeronautics & Space Administration (1)
Langley Research Center
Langley Station
Hampton, Virginia 23365
Attention: John L. Patterson (MS-234)
Instrument Research Division

National Aeronautics & Space Administration (1)
Langley Research Center
Langley Station
Hampton, Virginia 23365
Attention: M. B. Seyffert (MS-112)
Instrument Research Division

National Aeronautics & Space Administration (1)
Langley Research Center
Langley Station
Hampton, Virginia 23365
Attention: S. T. Peterson/Harry Ricker

National Aeronautics & Space Administration (1)
Lewis Research Center
21000 Brookpark Road
Cleveland, Ohio 44135
Attention: Dr. B. Lubarsky (MS 500-201)

National Aeronautics & Space Administration (1)
Lewis Research Center
21000 Brookpark Road
Cleveland, Ohio 44135
Attention: N. D. Sanders (MS 302-1)

National Aeronautics & Space Administration (1)
Lewis Research Center
21000 Brookpark Road
Cleveland, Ohio 44135
Attention: H. J. Schwartz (MS 500-202)

National Aeronautics & Space Administration (1)
Lewis Research Center
21000 Brookpark Road
Cleveland, Ohio 44135
Attention: Dr. J. S. Fordyce (MS 302-1)

National Aeronautics & Space Administration (1)
Lewis Research Center
21000 Brookpark Road
Cleveland, Ohio 44135
Attention: J. E. Dilley (MS 500-309)

National Aeronautics & Space Administration (1)
Lewis Research Center
21000 Brookpark Road
Cleveland, Ohio 44135
Attention: M. J. Saari (MS 500-202)

National Aeronautics & Space Administration (1)
Lewis Research Center
21000 Brookpark Road
Cleveland, Ohio 44135
Attention: J. J. Weber (MS 3-19)

National Aeronautics & Space Administration (2)
Lewis Research Center
21000 Brookpark Road
Cleveland, Ohio 44135
Attention: Robert B. King (MS 500-202)

National Aeronautics & Space Administration (1)
Lewis Research Center
21000 Brookpark Road
Cleveland, Ohio 44135
Attention: Library (MS 60-3)

National Aeronautics & Space Administration (1)
Lewis Research Center
21000 Brookpark Road
Cleveland, Ohio 44135
Attention: Report Control (MS 5-5)

National Aeronautics & Space Administration (1)
George C. Marshal Space Flight Center
Huntsville, Alabama 35812
Attention: Philip Youngblood

National Aeronautics & Space Administration (1)
George C. Marshal Space Flight Center
Huntsville, Alabama 35812
Attention: Richard Boehme (Bldg. 4487-BB)

National Aeronautics & Space Administration (1)
Manned Spacecraft Center
Houston, Texas 77058
Attention: William R. Dusenbury
Propulsion & Energy Systems Branch
(Bldg. 16, Site 1)

National Aeronautics & Space Administration (1)
Manned Spacecraft Center
Houston, Texas 77058
Attention: Robert Cohen
Gemini Project Office

National Aeronautics & Space Administration (1)
Manned Spacecraft Center
Houston, Texas 77058
Attention: Richard Ferguson (EP-5)

National Aeronautics & Space Administration
Manned Spacecraft Center
Houston, Texas 77058
Attention: Forrest E. Eastman (EE-4)

National Aeronautics & Space Administration (1)
Ames Research Center
Moffett Field, California 94035
Attention: James R. Swain/A. S. Hertzog
Pioneer Project

National Aeronautics & Space Administration (1)
Ames Research Center
Moffett Field, California 94035
Attention: Jon Rubenzer
Biosatellite Project

Jet Propulsion Laboratory (1)
4800 Oak Grove Drive
Pasadena, California 91103
Attention: Aiji Uchiyama

Department of the Army

U. S. Army Engineer R & D Labs. (1)
Fort Belvoir, Virginia 22060
Attention: Electrical Power Branch (SMOFB-EP)

Commanding Officer (1)
U. S. Army Electronics R & D Labs.
Fort Monmouth, New Jersey 07703
Attention: Power Sources Division (SELRA/PS)

Research Office (1)
Rand D. Directorate
Army Weapons Command
Rock Island, Illinois 61201
Attention: Mr. G. Riensmith, Chief

U. S. Army Research Office (1)
Box CM, Duke Station
Durham, North Carolina 27706
Attention: Dr. Wilhelm Jorgensen

U. S. Army Research Office (1)
Chief, Rand D
Department of the Army
3D442, The Pentagon
Washington, D. C. 20546

Harry Diamond Laboratories (1)
Room 300, Building 92
Connecticut Avenue & Van Ness Street, N. W.
Washington, D. C. 20008
Attention: Nathan Kaplan

Army Materiel Command (1)
Research Division
AMCRD-RSCM-T-7
Washington, D. C. 20315
Attention: John W. Crellin

Army Materiel Command (1)
Development Division
AMCRD-DE-MO-P
Washington, D. C. 20315
Attention: Marshall D. Aiken

U. S. Army TRECOM (1)
Fort Eustis, Virginia 23604
Attention: Dr. R. L. Echols (SMOFE-PSG)

U. S. Army TRECOM (1)
Fort Eustis, Virginia 23604
Attention: Leonard M. Bartone (SMOFE-ASE)

U. S. Army Mobility Command (1)
Research Division
Warren, Michigan 48090
Attention: O. Renius (AMSMO-RR)

Natick Laboratories (1)
Clothing and Organic Materials Division
Natick, Massachusetts 01760
Attention: Norman Fertman

Department of the Navy

Office of Naval Research (1)
Washington, D. C. 20360
Attention: Head, Power Branch (Code 429)

Office of Naval Research (1)
Department of the Navy
Washington, D. C. 20360
Attention: H. W. Fox (Code 425)

Naval Research Laboratory (1)
Washington, D. C. 20390
Attention: Dr. J. C. White (Code 6160)

U. S. Navy Marine Engineering Laboratory (1)
Annapolis, Maryland 21402
Attention: J. H. Harrison

Bureau of Naval Weapons (1)
Department of the Navy
Washington, D. C. 20360
Attention: Whitewall T. Beatson (Code RAAE-52)

Bureau of Naval Weapons (1)
Department of the Navy
Washington, D. C. 20360
Attention: Milton Knight (Code RRRE-62)

Naval Ammunition Depot (1)
Crane, Indiana 47522
Attention: E. Bruess/H. Shultz

Naval Ordnance Laboratory (1)
Department of the Navy
Corona, California 91720
Attention: William C. Spindler (Code 441)

Naval Ordnance Laboratory (1)
Department of the Navy
Silver Spring, Maryland 20900
Attention: Philip B. Cole (Code WB)

Bureau of Ships (1)
Department of the Navy
Washington, D. C. 20360
Attention: C. F. Viglotti (Code 660)

Bureau of Ships (1)
Department of the Navy
Washington, D. C. 20360
Attention: Bernard B. Rosenbaum (Code 340)

Department of the Air Force

Space Systems Division (1)
Los Angeles Air Force Station
Los Angeles, California 90045
Attention: SSSD

Flight Vehicle Power Branch (1)
Aero Propulsion Laboratory
Wright-Patterson Air Force Base, Ohio 45433
Attention: James E. Cooper

Air Force Cambridge Research Lab. (CRFE) (1)
L. G. Hanscom Field
Bedford, Massachusetts 01731
Attention: Dr. Richard Payne

Headquarters, U. S. Air Force (AFRDR-AS) (1)
Washington 25, D. C.
Attention: Major G. Starkey

Headquarters, U. S. Air Force (AFRDR-AS) (1)
Washington 25, D. C.
Attention: Lt. Col. William G. Alexander

Rome Air Development Center, ESD (1)
Griffis Air Force Base, New York 13442
Attention: Frank J. Mollura (RASSM)

Other Government Agencies

National Bureau of Standards (1)
Washington, D. C. 20234
Attention: Dr. W. J. Hamer

Office, DDR&E, USE & BSS (1)
The Pentagon
Washington, D. C. 20310
Attention: G. B. Wareham

Mr. Donald B. Hoatson (1)
Army Reactors, DRD
U. S. Atomic Energy Commission
Washington, D. C. 20545

Institute for Defense Analyses (1)
R & E Support Division
400 Army-Navy Drive
Arlington, Virginia 22202
Attention: Mr. R. Hamilton

Institute for Defense Analyses (1)
R & E Support Division
400 Army-Navy Drive
Arlington, Virginia 22202
Attention: Dr. George C. Szego

U. S. Atomic Energy Commission (1)
Auxiliary Power Branch (SNAP)
Division of Reactor Development
Washington 25, D. C.
Attention: Lt. Col. George H. Ogburn, Jr.

Lt. Col. John H. Anderson (1)
Advanced Space Reactor Branch
Division of Reactor Development
U. S. Atomic Energy Commission
Washington 25, D. C.

Clearing House (1)
5285 Park Royal Road
Springfield, Virginia 22151

U. S. Bureau of Mines (1)
4800 Forbes Avenue
Pittsburgh, Pennsylvania 15213

Industry

Aerojet-General Corporation (1)
Von Karman Center
Bldg. 312, Dept. 3111
Azusa, California
Attention: Mr. Russ Fogle

Aeronutronic Division (1)
Philco Corporation
Ford Road
Newport Beach, California 92660

Aerospace Corporation (1)
Post Office Box 95085
Los Angeles, California 90045
Attention: Library

Aerospace Corporation (1)
Systems Design Division
2350 East El Segundo Boulevard
El Segundo, California
Attention: John G. Krisilas

Allis-Chalmers Manufacturing Co. (1)
1100 South 70th Street
Milwaukee, Wisconsin 53201
Attention: Dr. P. Joyner

American University (1)
Mass. & Nebraska Avenues, N. W.
Washington, D. C. 20016
Attention: Dr. R. T. Foley,
Chemistry Department

Arthur D. Little, Inc. (1)
Acorn Park
Cambridge, Massachusetts 02140
Attention: Dr. Ellery W. Stone

Atomics International Division (1)
North American Aviation, Inc.
8900 De Soto Avenue
Canoga Park, California 91304
Attention: Dr. H. L. Recht

Battelle Memorial Institute (1)
505 King Avenue
Columbus, Ohio 43201
Attention: Dr. C. L. Faust

Bell Telephone Laboratories, Inc. Murray Hill, New Jersey 07971 Attention: U. B. Thomas	(1)
The Boeing Company P. O. Box 3707 Seattle, Washington 98124	(1)
Borden Chemical Company Central Research Laboratory P. O. Box 9524 Philadelphia, Pennsylvania 19124	(1)
Burgess Battery Company Foot of Exchange Street Freeport, Illinois 61032 Attention: Dr. Howard J. Strauss	(1)
C & D Batteries Division of Electric Autolite Col. Conshohocken, Pennsylvania 19428 Attention: Dr. Eugene Willihnganz	(1)
Calvin College Grand Rapids, Michigan 49506 Attention: Prof. T. P. Dirkse	(1)
Catalyst Research Corporation 6101 Falls Road Baltimore, Maryland 21209 Attention: J. P. Wooley	(1)
Chem-Cell Inc. 150 Dey Road Wayne, New Jersey 07470 Attention: Peter D. Richman	(1)
Delco Remy Division General Motors Corporation 2401 Columbus Avenue Anderson, Indiana 46011 Attention: Dr. J. J. Lander	(1)
Douglas Aircraft Company, Inc. Astropower Laboratory 2121 Campus Drive Newport Beach, California 92663 Attention: Dr. Carl Berger	(1)

Dynatech Corporation (1)
17 Tudor Street
Cambridge, Massachusetts 02138
Attention: R. L. Wentworth

Eagle-Picher Company (1)
Post Office Box 47
Joplin, Missouri 64802
Attention: E. M. Morse

Elgin National Watch Company (1)
107 National Street
Elgin, Illinois 60120
Attention: T. Boswell

Electric Storage Battery Company (1)
Missile Battery Division
2510 Louisburg Road
Raleigh, North Carolina 27604
Attention: A. Chreitzberg

Electric Storage Battery Company (1)
Carl F. Norberg Research Center
19 West College Avenue
Yardley, Pennsylvania 19068
Attention: Dr. R. A. Schaefer

Electrochimica Corporation (1)
1140 O'Brien Drive
Menlo Park, California 94025
Attention: Dr. Morris Eisenberg

Electro-Optical Systems, Inc. (1)
300 North Halstead
Pasadena, California 91107
Attention: M. Klein

Emhart Manufacturing Company (1)
Box 1620
Hartford, Connecticut 06101
Attention: Dr. W. P. Cadogan

Engelhard Industries, Inc. (1)
497 DeLancy Street
Newark, New Jersey 07105
Attention: Dr. J. G. Cohn

Dr. Arthur Fleischer 466 South Center Street Orange, New Jersey 07050	(1)
General Electric Company Research & Development Center Schenectady, New York 12301 Attention: Dr. R. C. Osthoff (Bldg. 37, Room 2083)	(1)
General Electric Company Missile & Space Division Spacecraft Department P. O. Box 8555 Philadelphia, Pennsylvania 19101 Attention: E. W. Kipp, Room T-2513	(1)
General Electric Company Battery Products Section P. O. Box 114 Gainesville, Florida 32601	(1)
General Electric Company Research & Development Center Schenectady, New York 12301 Attention: Dr. H. Liebhafsky	(1)
General Motors Corporation Defense Research Laboratories 6767 Hollister Street Santa Barbara, California 93105 Attn: Dr. J. S. Smatko/Dr. C. R. Russell	(1)
General Telephone & Electronics Labs. Bayside, New York Attention: Dr. Paul Goldberg	(1)
Globe-Union, Inc. 900 East Keefe Avenue Milwaukee, Wisconsin 53201 Attention: Dr. Warren Towle	(1)
Globe-Union, Inc. 900 East Keefe Avenue Milwaukee, Wisconsin 53201 Attention: Dr. C. K. Morehouse	(1)

Gould-National Batteries, Inc. (1)
Engineering & Research Center
2630 University Avenue, S. E.
Minneapolis, Minnesota 55418
Attention: D. L. Douglas

Gulton Industries (1)
Alkaline Battery Division
212 Durham Avenue
Metuchen, New Jersey 08840
Attention: Dr. Robert Shair

Grumman Aircraft (1)
OPGS, Plant 35
Bethpage, Long Island, N. Y.
Attention: Bruce Clark

Hughes Aircraft Corporation (1)
Centinda Avenue & Teale Street
Culver City, California 90230
Attention: T. V. Carvey

Hughes Aircraft Corporation (1)
Bldg. 366, M. S. 524
El Segundo, California 90245
Attention: R. B. Robinson

Hughes Research Labs. Corp. (1)
3011 Malibu Canyon Road
Malibu, California 90265
Attention: T. M. Hahn

ITT Federal Laboratories (1)
500 Washington Avenue
Nutley, New Jersey 07110
Attention: Dr. P. E. Lighty

ITT Research Institute (1)
10 West 35th Street
Chicago, Illinois 60616
Attention: Dr. H. T. Francis

Institute of Gas Technology (1)
State and 34th Street
Chicago, Illinois 60616
Attention: B. S. Baker

Johns Hopkins University (1)
Applied Physics Laboratory
8621 Georgia Avenue
Silver Spring, Maryland 20910
Attention: Richard Cole

Johns-Manville R & E Center (1)
P. O. Box 159
Manville, New Jersey 08835
Attention: J. S. Parkinson

Leesona Moos Laboratories (1)
Lake Success Park, Community Drive
Great Neck, New York 11021
Attention: Dr. H. Oswin

Livingston Electronic Corporation (1)
Route 309
Montgomeryville, Pennsylvania 18936
Attention: William F. Meyers

Lockheed Missiles & Space Company (1)
3251 Hanover Street
Palo Alto, California 94304
Attention: Library/Dr. G. B. Adams

Lockheed Missiles & Space Company (1)
Dept. 62-30
3251 Hanover Street
Palo Alto, California 94304
Attention: J. E. Chilton

Idaho State University (1)
Department of Chemistry
Pocatello, Idaho 83201
Attention: Dr. G. Myron Arcand

Mallory Battery Company (1)
60 Elm Street
North Tarryton, New York 10593
Attention: R. R. Clune

P. R. Mallory & Company, Inc.
Technical Services Laboratory
Indianapolis, Indiana 46206
Attention: A. S. Doty

P. R. Mallory & Company, Inc. (1)
Northwest Industrial Park
Burlington, Massachusetts 02103
Attention: Dr. Per Bro

P. R. Mallory & Company, Inc. (1)
3029 East Washington Street
Indianapolis, Indiana 46206
Attention: Technical Librarian

Marquardt Corporation (1)
16555 Saticoy Street
Van Nuys, California 91406
Attention: Dr. H. G. Krull

Material Research Corporation (1)
Orangeburg, New York
Attention: V. E. Adler

Melpar (1)
Technical Information Center
3000 Arlington Boulevard
Falls Church, Virginia 22046

Midwest Research Institue (1)
425 Volker Boulevard
Kansas City, Missouri 64110
Attention: Dr. B. W. Beadle

Monsanto Research Corporation (1)
Boston Laboratory
Everett, Massachusetts 02149
Attention: Dr. J. O. Smith

North American Rockwell Corporation (1)
Rocketdyne Division
6633 Canoga Avenue
Canoga Park, California 91303
Attention: Library

North American Rockwell Corporation (1)
12214 Lakewood Boulevard
Downey, California 90241
Attention: Burton M. Otzinger

Dr. John Owen (1)
P. O. Box 87
Bloomfield, New Jersey 07003

Power Information Center (1)
University of Pennsylvania
Moore School Building
3401 Market Street, Room 2107
Philadelphia, Pennsylvania 19104

Philco Corporation (1)
Division of the Ford Motor Company
Blue Bell, Pennsylvania 19422
Attention: Dr. Phillip Cholet

Radiation Applications, Inc. (1)
36-40 37th Street
Long Island City, New York 11101

Radio Corporation of America (1)
Astro Division
Hightstown, New Jersey 08520
Attention: Seymour Winkler

Radio Corporation of America (1)
P. O. Box 800
Princeton, New Jersey 08540
Attention: I. Schulman

Southwest Research Institute (1)
8500 Culebra Road
San Antonio, Texas 78206
Attention: Dr. Jan Al

Sonotone Corporation (1)
Saw Mill River Road
Elmsford, New York 10523
Attention: A. Mundel

Texas Instruments, Inc. (1)
Metals and Controls Division
34 Forest Street
Attleboro, Massachusetts 02703
Attention: Dr. E. M. Jost

Sprague Electric Company (1)
87 Marshall Street
North Adams, Massachusetts 01247
Attention: Harold F. Phillips, Jr.

Texas Instruments, Inc. (1)
13500 North Central Expressway
Dallas, Texas 75222
Attention: Dr. Isaac Trachtenberg

Thomas A. Edison Research Laboratory (1)
McGraw Edison Company
Watchung Avenue
West Orange, New Jersey 07052
Attention: Dr. P. F. Grieger

TRW Systems, Inc. (1)
One Space Park
Redondo Beach, California 90278
Attention: Dr. A. Krausz
(Bldg. 60, Rm. 929)

TRW Systems, Inc. (1)
One Space Park
Redondo Beach, California 90278
Attention: Mr. Richard Sparks

TRW Inc. (1)
23555 Euclid Avenue
Cleveland, Ohio 44117
Attention: Librarian

Tyco Laboratories, Inc. (1)
Bear Hill
Hickory Drive
Waltham, Massachusetts 02154
Attention: W. W. Burnett

Union Carbide Corporation (1)
Development Laboratory Library
P. O. Box 6056
Cleveland, Ohio 44101

Union Carbide Corporation (1)
Parma Research Laboratory
P. O. Box 6116
Cleveland, Ohio 44101
Attention: Library

University of California (1)
Space Science Laboratory
Berkeley, California 94720
Attention: Dr. C. W. Tobias

University of Pennsylvania (1)
Electrochemistry Laboratory
Philadelphia, Pennsylvania 19104
Attention: Prof. J. O'M. Bockris

University of Toledo (1)
Toledo, Ohio 43606
Attention: Dr. Albertine Krohn

Western Electric Company (1)
Suite 802, RCA Building
Washington, D. C. 20006
Attention: R. T. Fiske

Westinghouse Electric Corporation (1)
Research & Development Center
Churchill Borough
Pittsburgh, Pennsylvania 15235
Attention: Dr. A. Langer

Whittaker Corporation (1)
3850 Olive Street
Denver, Colorado 80237
Attention: Borch Wendir

Whittaker Corporation (1)
NARMCO Research & Development Division
3540 Aero Court
San Diego, California 92123
Attention: Dr. M. Shaw

Yardney Electric Corporation (1)
Yardney Building
40-52 Leonard Street
New York, New York 10013
Attention: Dr. George Dalin

Naval Ordnance Systems Command (1)
Energy Conversion and Materials Division
Washington, D.C.
Attention: Mr. B. Drimmer

American Oil Company
P. O. Box 431
Whiting, Indiana 46394
Attention: Dr. R. J. Flannery

(1)

Sandia Corporation
Division 1323, Sandia Base
Albuquerque, New Mexico 87116
Attention: Dr. S. C. Levy

(1)

DOCUMENT CONTROL DATA - R & D

(Security classification of title, body of abstract and indexing annotation must be entered when the overall report is classified)

1. ORIGINATING ACTIVITY (Corporate author) Rocketdyne, a Division of North American Rockwell Corporation, 6633 Canoga Avenue, Canoga Park, California 91304		2a. REPORT SECURITY CLASSIFICATION UNCLASSIFIED	
		2b. GROUP	
3. REPORT TITLE PROPERTIES OF NONAQUEOUS ELECTROLYTES			
4. DESCRIPTIVE NOTES (Type of report and inclusive dates) Quarterly Report (20 June 1967 to 19 September 1967)			
5. AUTHOR(S) (First name, middle initial, last name) Keller, R.; Foster, J. N.; Hon, J. F.; Kalman, O. F.; Sullivan, J. M.			
6. REPORT DATE 19 October 1967		7a. TOTAL NO. OF PAGES 87	7b. NO. OF REFS 17
8a. CONTRACT OR GRANT NO. NAS3-8521		9a. ORIGINATOR'S REPORT NUMBER(S) R-6754-5	
b. PROJECT NO.		9b. OTHER REPORT NO(S) (Any other numbers that may be assigned this report)	
c.			
d.			
10. DISTRIBUTION STATEMENT			
11. SUPPLEMENTARY NOTES		12. SPONSORING MILITARY ACTIVITY National Aeronautics and Space Administration, Lewis Research Center, Cleveland, Ohio	
13. ABSTRACT Studies of aprotic electrolytes based on three solvents: propylene carbonate, dimethyl formamide, and acetonitrile, were continued. Characterized components were used to prepare the electrolyte solutions. Structural studies of electrolytes containing lithium perchlorate, lithium chloride, aluminum chloride, and cupric chloride were performed by nuclear magnetic resonance. The physical properties measured included solvent viscosities, electrolyte conductances to determine individual ion mobilities, sonic velocities, and transference numbers.			

14. KEY WORDS	LINK A		LINK B		LINK C	
	ROLE	WT	ROLE	WT	ROLE	WT
Nonaqueous Electrolytes						
Propylene Carbonate						
Dimethyl Formamide						
Acetonitrile						
Lithium Perchlorate						
Lithium Chloride						
Aluminum Chloride						
Cupric Chloride						