

AMES GRAF

IN-64-CR

280674

D-16

Chebyshev Polynomials are Not Always Optimal

Bernd Fischer
Roland Freund

April, 1989

Research Institute for Advanced Computer Science
NASA Ames Research Center

RIACS Technical Report 89.17

NASA Cooperative Agreement Number NCC 2-387

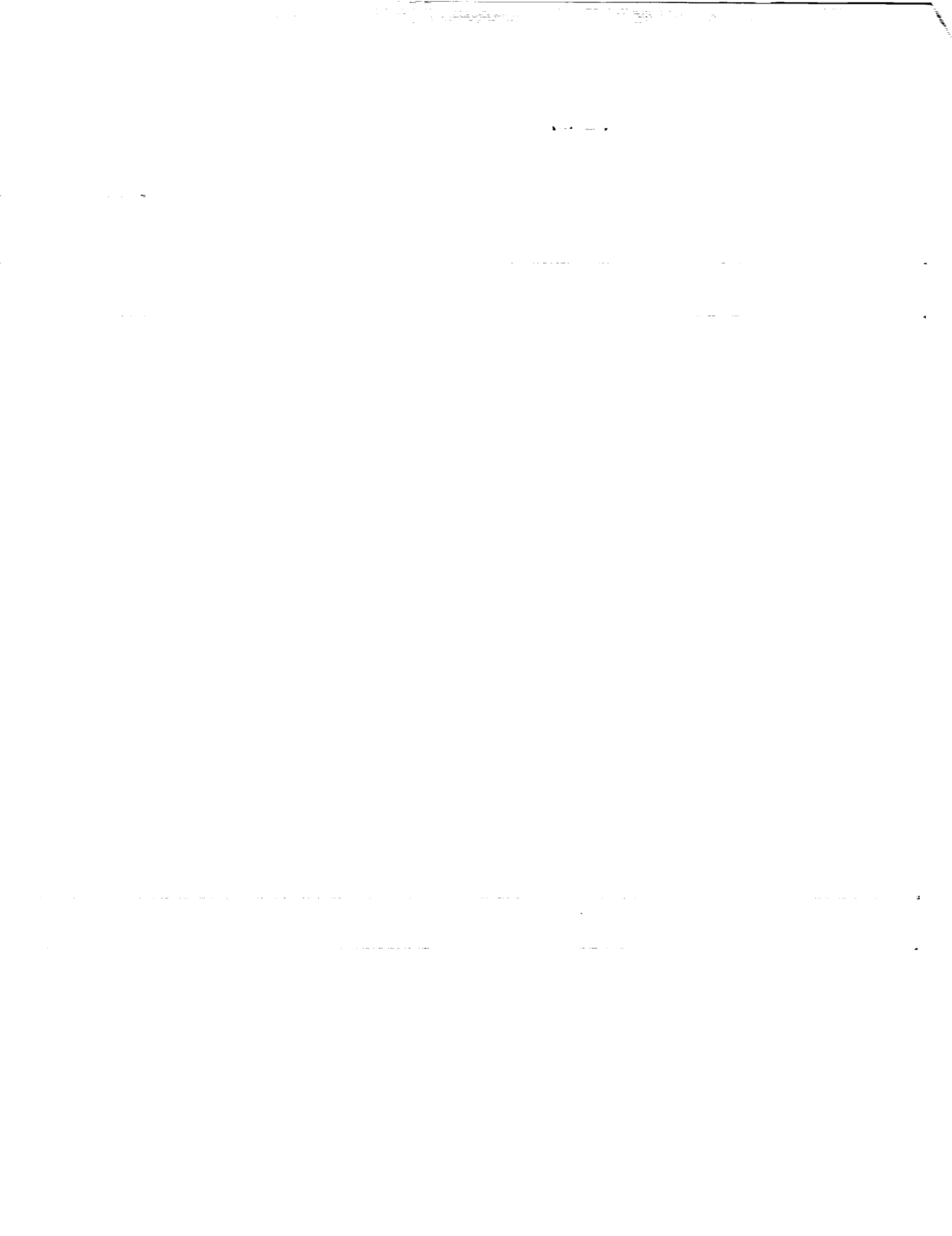
(NASA-CR-181465) CHEBYSHEV POLYNOMIALS ARE
NOT ALWAYS OPTIMAL (Research Inst. for
Advanced Computer Science) 16 p CSDL 12A

N90-24008

Unclas
G3/64 0280674

RIACS

Research Institute for Advanced Computer Science



Chebyshev Polynomials are Not Always Optimal

Bernd Fischer
Roland Freund

April, 1989

Research Institute for Advanced Computer Science
NASA Ames Research Center

RIACS Technical Report 89.17

NASA Cooperative Agreement Number NCC 2-387



Chebyshev Polynomials are Not Always Optimal

Bernd Fischer

Roland Freund

Institut für
Angewandte Mathematik
Universität Hamburg
D – 2000 Hamburg 13, F.R.G.

Institut für Angewandte
Mathematik und Statistik
Universität Würzburg
D – 8700 Würzburg, F.R.G.

and

and

Department of Computer Science
Stanford University
Stanford, CA 94305

RIACS, Mail Stop 230-5
NASA Ames Research Center
Moffett Field, CA 94035

Abstract

We are concerned with the problem of finding among all polynomials of degree at most n and normalized to be 1 at c the one with minimal uniform norm on \mathcal{E} . Here, \mathcal{E} is a given ellipse with both foci on the real axis and c is a given real point not contained in \mathcal{E} . Problems of this type arise in certain iterative matrix computations, and, in this context, it is generally believed and widely referenced that suitably normalized Chebyshev polynomials are optimal for such constrained approximation problems. In this note, we show that this is not true in general. Moreover, we derive sufficient conditions which guarantee that Chebyshev polynomials are optimal. Also, some numerical examples are presented.

The work of the first author was supported by the German Research Association (DFG). The second author was supported by Cooperative Agreement NCC 2-387 between the National Aeronautics and Space Administration (NASA) and the Universities Space Research Association (USRA).

1. Introduction and Statement of the Main Results

Let Π_n be the set of all complex polynomials of degree at most n . For $r > 1$, we denote by

$$\mathcal{E}_r := \left\{ z \in \mathbb{C} \mid |z-1| + |z+1| \leq r + \frac{1}{r} \right\}$$

the ellipse with foci at ± 1 and semi-axes

$$a_r := \frac{1}{2} \left(r + \frac{1}{r} \right) \quad , \quad b_r := \frac{1}{2} \left(r - \frac{1}{r} \right) \quad .$$

In this note, we study the constrained Chebyshev approximation problem

$$\min_{p \in \Pi_n: p(c)=1} \max_{z \in \mathcal{E}_r} |p(z)| \quad (1)$$

where $n \in \mathbb{N}$, $r > 1$, and $c \in \mathbb{R} \setminus \mathcal{E}_r$. Standard results from approximation theory (see e.g. [9]) show that there always exists a unique optimal polynomial, denoted by $p_n(z; r, c)$ in the sequel, for (1) and, moreover, that p_n is a real polynomial. In 1963, Clayton [3] proved that $p_n(z; r, c)$ is just the polynomial

$$t_n(z; c) := \frac{T_n(z)}{T_n(c)} \quad (2)$$

where

$$T_n(z) = \frac{1}{2} \left(v^n + \frac{1}{v^n} \right) \quad , \quad z = \frac{1}{2} \left(v + \frac{1}{v} \right) \quad . \quad (3)$$

denotes the n th Chebyshev polynomial. The approximation problem (1) arises in certain iterative matrix computations (see e.g. [2,5]). In this context, Clayton's result is widely referenced in the literature (e.g. [2,5,8,12,13]) and is even used to derive new results on constrained approximation problems [1]. Surprisingly, nobody seems to have checked Clayton's proof.

In this note, we show that the normalized Chebyshev polynomials (2) are **not** always optimal for (1), and hence Clayton's result is not true in general. More precisely, we have the following

Theorem 1.

- a) Let $r > 1$ and $c > a_r$ or $c < -a_r$. Then, for $n = 1, 2, 3, 4$, $t_n(z; c)$ is the unique optimal polynomial for (1).
- b) For any integer $n \geq 5$ there exists a real number $r^* = r^*(n) > 1$ such that $t_n(z; c)$ is **not** optimal for (1) for all $r > r^*$ and all $c \in \mathbb{R}$ with $a_r < |c| \leq a_r + 1/a_r^2$.

However, $t_n \equiv p_n$ in most cases, and t_n ceases to be optimal only for normalization points c which are very close to the ellipse. We will show that the following conditions on c are sufficient to guarantee the optimality of t_n .

Theorem 2. Let $n \geq 5$ be an integer, $r > 1$, and $c \in \mathbb{R}$. Then, $t_n(z; c)$ is the unique optimal polynomial for (1), if

$$(a) \quad |c| \geq \frac{1}{2}(r^{\sqrt{2}} + r^{-\sqrt{2}})$$

or

$$(b) \quad |c| \geq \frac{1}{2a_r}(2a_r^2 - 1 + \sqrt{2a_r^4 - a_r^2 + 1}) .$$

Remark 1. In general, the conditions (a) and (b) do not imply each other. In particular, (a) (resp. (b)) is less stringent for small r (resp. large r). Also, note that (b) is satisfied if $|c| \geq (1 + \sqrt{2}/2)a_r$.

The paper is organized as follows. In Section 2, we state a necessary and sufficient criterion for t_n to be optimal for (1). Also some auxiliary results are collected which will be used in Section 3 and 4 to prove Theorem 1 and 2, respectively. Finally, in Section 5, we present some numerical examples.

2. Preliminaries

In the sequel, let always be $r > 1$ and $n \in \mathbb{N}$. Since $p_n(z; r, -c) \equiv p_n(-z; r, c)$ it is sufficient to consider positive c only; so for the rest of the paper, we assume that $c > a_r$.

First, we determine the extremal points z_l of t_n defined by

$$|t_n(z_l; c)| = \max_{z \in \mathcal{E}_r} |t_n(z; c)| \quad , \quad z_l \in \mathcal{E}_r .$$

With (3), one easily verifies that there are $2n$ such points given by

$$z_l := a_r \cos \varphi_l + ib_r \sin \varphi_l \quad , \quad \varphi_l := l\pi/n \quad , \quad l = 1, \dots, 2n .$$

Moreover, note that $t_n(z_l; c) = (-1)^l T_n(a_r)/T_n(c)$. Using Rivlin and Shapiro's characterization [10] of the optimal solution of general linear Chebyshev approximation problems, we deduce that $t_n \equiv p_n$ iff there exist nonnegative real numbers σ_l , $l = 1, \dots, 2n$ (not all zero) such that

$$\sum_{l=1}^{2n} \sigma_l (-1)^l q(z_l) = 0 \quad \text{for all } q \in \Pi_n \quad \text{with } q(c) = 0 . \quad (4)$$

By solving this linear system explicitly, one arrives at the following

Lemma 1. The polynomial (2) t_n is optimal for (1) iff $\sigma_l \geq 0$ for $l = 1, \dots, 2n$, where

$$\sigma_l := (-1)^l \left(\frac{1}{2} (1 + (-1)^l \frac{T_n(c)}{T_n(a_r)}) + \sum_{k=1}^{n-1} \frac{T_k(c)}{T_k(a_r)} \cos(k\varphi_l) \right) . \quad (5)$$

Proof. The result is a special case of Theorem 3 in [4] where we investigated the approximation problem (1) in the more general setting of complex c . On the other hand, by using the polynomials $q(z) = T_k(z) - T_k(c)$, $k = 1, \dots, n$, as a basis in (4), it is also straightforward to verify directly that the σ_l given by (5) satisfy (4) and that these are up to a constant factor the only solutions of (4). ■

Remark 2. Clearly $\sigma_{2n} > 0$ and, moreover, $\sigma_l = \sigma_{2n-l}$. Hence, t_n is optimal iff $\sigma_l \geq 0$ for $l = 1, \dots, n$.

The following result due to Rogosinski and Szegö [11] will be used in the next section to establish a sufficient condition for the positivity of the σ_l .

Lemma 2. Let $\lambda_0, \lambda_1, \dots, \lambda_n$ be real numbers which satisfy $\lambda_n \geq 0$, $\lambda_{n-1} - 2\lambda_n \geq 0$, and $\lambda_{k-1} - 2\lambda_k + \lambda_{k+1} \geq 0$ for $k = 1, 2, \dots, n-1$. Then:

$$s(\varphi) := \frac{\lambda_0}{2} + \sum_{k=1}^n \lambda_k \cos(k\varphi) \geq 0 \quad \text{for all } \varphi \in \mathbb{R} . \quad (6)$$

We close this section with the following technical lemma. The proof is straightforward and omitted here.

Lemma 3.

a) Let $k \in \mathbb{N}$. Then:

$$\sum_{j=1}^k \cos^2 \frac{(j-1/2)\pi}{k} = \begin{cases} 0 & \text{if } k = 1 \\ k/2 & \text{if } k \geq 2 \end{cases}$$

b) Let $2 \leq l \leq n$ be an even integer and $\varphi_l = l\pi/n$. Then:

$$\sum_{k=0}^{n-1} \cos(k\varphi_l) = 0 \quad (7)$$

and

$$\sum_{k=1}^{n-1} k \cos(k\varphi_l) = -n/2 . \quad (8)$$

3. Proof of Theorem 1

Let $r > 1$ be fixed and set $a := a_r$. Then, for each l , (5) defines a polynomial $\sigma_l(c) = \sigma_l$ in c of degree n . Therefore,

$$\sigma_l(c) = \sigma_l(a) + (c - a) \left(\sigma_l'(a) + \sum_{j=2}^n \frac{\sigma_l^{(j)}(a)}{j!} (c - a)^{j-1} \right). \quad (9)$$

First, we prove part b) of Theorem 1. Let $n \geq 5$ and $2 \leq l \leq n$ be an even integer. With (5) and (7), it follows that

$$\sigma_l(a) = (-1)^l \left(\frac{1}{2} (1 + (-1)^l) + \sum_{k=1}^{n-1} \cos(k\varphi_l) \right) = 0. \quad (10)$$

Furthermore, we derive from (5)

$$\sigma_l'(a) = \frac{1}{2} \frac{T_n'(a)}{T_n(a)} + \sum_{k=1}^{n-1} \frac{T_k'(a)}{T_k(a)} \cos(k\varphi_l). \quad (11)$$

Let $\xi_j^{(k)} = \cos((2j-1)\pi/(2k))$, $j = 1, \dots, k$, denote the zeros of T_k . Then,

$$\begin{aligned} \frac{T_k'(a)}{T_k(a)} &= \sum_{j=1}^k \frac{1}{a - \xi_j^{(k)}} = \sum_{m=0}^{\infty} \frac{1}{a^{m+1}} \sum_{j=1}^k (\xi_j^{(k)})^m = \sum_{m=0}^{\infty} \frac{1}{a^{2m+1}} \sum_{j=1}^k (\xi_j^{(k)})^{2m} \\ &= k/a + \begin{cases} 0 & \text{if } k = 1 \\ k/(2a^3) + O(1/a^5) & \text{if } k \geq 2 \end{cases} \end{aligned} \quad (12)$$

Here, we used the fact that T_k'/T_k is an odd function and part a) of Lemma 3. With (8), (11), and (12), it follows that

$$\sigma_l'(a) = -\frac{1}{2} \cos\left(\frac{l\pi}{n}\right) \frac{1}{a^3} + O\left(\frac{1}{a^5}\right). \quad (13)$$

Combining (9), (10), and (13) yields

$$\sigma_l(c) = (c - a) \left(-\frac{1}{2} \cos\left(\frac{l\pi}{n}\right) \frac{1}{a^3} + O\left(\frac{1}{a^5}\right) + \sum_{j=2}^n \frac{\sigma_l^{(j)}(a)}{j!} (c - a)^{j-1} \right)$$

and, finally, since, in view of (5) and $T_k^{(j)}(a)/T_k(a) = O(1/a^j)$, for $j \geq 2$ we have $\sigma_l^{(j)}(a) = O(1/a^2)$,

$$\sigma_l(c) = \frac{c - a}{a^3} \left(-\frac{1}{2} \cos\left(\frac{l\pi}{n}\right) + O\left(\frac{1}{a^2}\right) + O(a(c - a)) \right).$$

Thus, $\sigma_l(c) < 0$ and, therefore, (2) is not the optimal polynomial for (1), if $c - a \leq 1/a^2$, a is sufficiently large, and $\cos(l\pi/n) > 0$, i.e. $l < n/2$. Note that even l with $2 \leq l < n/2$ exist, since $n \geq 5$. This concludes the proof of part b) of Theorem 1.

We now turn to the proof of part a) of Theorem 1. Let $r > 1$ and $c > a = a_r$ be fixed. Moreover, set $A_k := T_k(c)$ and $a_k := T_k(a)$. Then, in view of Lemma 1 and Remark 2, one needs to check the positivity of

$$\sigma_l^{(n)} = (-1)^l \left(\frac{1}{2} \left(1 + (-1)^l \frac{A_n}{a_n} \right) + \sum_{k=1}^{n-1} \frac{A_k}{a_k} \cos\left(\frac{kl\pi}{n}\right) \right), \quad l = 1, \dots, n, \quad (14)$$

for the four cases $n = 1, 2, 3, 4$. For $n = 1, 2$ this is clearly true, since

$$\sigma_1^{(1)} = \frac{1}{2} \left(\frac{A_1}{a_1} - 1 \right) > 0, \quad \sigma_1^{(2)} = \frac{1}{2} \left(\frac{A_2}{a_2} - 1 \right) > 0,$$

and

$$\sigma_2^{(2)} = \frac{1}{2} \left(\frac{A_2}{a_2} - 2 \frac{A_1}{a_1} + 1 \right) = \frac{(c-a)(ac-a^2+1)}{a(2a^2-1)} > 0.$$

Next, consider $n = 3$. It is easily verified that $A_3/a_3 > A_1/a_1$, and hence

$$\sigma_1^{(3)} = \frac{1}{2} \left(\frac{A_3}{a_3} - \frac{A_1}{a_1} \right) + \frac{1}{2} \left(\frac{A_2}{a_2} - 1 \right) > 0.$$

By using that $T_2(c)T_2(a) + ca$ is a monotonously increasing function in c for $c \geq a \geq 1$, we deduce

$$\begin{aligned} \sigma_2^{(3)} &= \frac{1}{2} \left(\frac{A_3}{a_3} - \frac{A_2}{a_2} - \frac{A_1}{a_1} + 1 \right) = \frac{(c-a)}{2a} \left(\frac{2T_2(c)T_2(a) + 2ca + 1}{(4a^2-3)(2a^2-1)} - 1 \right) \\ &\geq \frac{2a(c-a)}{(4a^2-3)(2a^2-1)} > 0. \end{aligned}$$

Similarly, one obtains

$$\begin{aligned} \sigma_3^{(3)} &= \frac{1}{2} \frac{A_3}{a_3} - \frac{A_2}{a_2} + \frac{A_1}{a_1} - \frac{1}{2} = \frac{(c-a)}{a} \left(\frac{4(c^2 + 2ca + a^2) - 3}{2(4a^2-3)} - \frac{2ca+1}{2a^2-1} \right) \\ &\geq \frac{(c-a)(16a^4 - 18a^2 + 9)}{2a(4a^2-3)(2a^2-1)} > 0. \end{aligned}$$

Finally, we turn to the case $n = 4$. Analogously to the case $n = 3$, $l = 1$

$$\sigma_1^{(4)} = \frac{1}{2} \left(\frac{A_4}{a_4} - 1 \right) + \frac{\sqrt{2}}{2} \left(\frac{A_3}{a_3} - \frac{A_1}{a_1} \right) > 0.$$

For $l = 2$, we have

$$\sigma_2^{(4)} = \frac{1}{2} \left(\frac{A_4}{a_4} - 2 \frac{A_2}{a_2} + 1 \right) = \frac{(A_2 - a_2)(A_2 a_2 - a_2^2 + 1)}{a_2(2a_2^2 - 1)} > 0$$

The positivity of $\sigma_3^{(4)}$ follows from

$$\begin{aligned} \frac{\sigma_3^{(4)}}{2(c^2 - a^2)} &= \frac{1}{4(c^2 - a^2)} \left(\frac{A_4}{a_4} - 1 - \sqrt{2} \left(\frac{A_3}{a_3} - \frac{A_1}{a_1} \right) \right) \\ &= \frac{2(c^2 + a^2 - 1)}{8a^4 - 8a^2 + 1} - \frac{\sqrt{2}c}{a(4a^2 - 3)} \end{aligned} \quad (15)$$

$$\geq \frac{8(2 - \sqrt{2})a^4 + 4(2\sqrt{2} - 5)a^2 + 6 - \sqrt{2}}{(8a^4 - 8a^2 + 1)(4a^2 - 3)} > 0 \quad (16)$$

Here we have used that (15) is a monotonously increasing function in c for $c \geq 1$ and that the numerator in (16) has no real zero. Similarly, by a routine, but lengthy, computation, one verifies that

$$\begin{aligned} \frac{a_2 a_3 a_4}{2(c - a)} \sigma_4^{(4)} &= \frac{a_2 a_3 a_4}{2(c - a)} \left(\frac{1}{2} \frac{A_4}{a_4} - \frac{A_3}{a_3} + \frac{A_2}{a_2} - \frac{A_1}{a_1} + \frac{1}{2} \right) \\ &= (2c^2 - 1) \left((c - a)a_3 + a_2 \right) a_2 + \left((c(4a^2 - 1) - a_3)(a_2 - 1)a - a_2 \right) (a_2 - 1) \\ &\geq a_2(4a^4 - 6a^2 + 3) + 2a^2(a_2 - 1)^2 > 0 \end{aligned}$$

This concludes the proof of part a) of Theorem 1.

4. Proof of Theorem 2

Let $r > 1$ and $c > a := a_r$ be fixed. Note that a and c have the representations

$$a = \frac{1}{2} \left(r + \frac{1}{r} \right) \quad , \quad c = \frac{1}{2} \left(R + \frac{1}{R} \right) \quad , \quad R > r \quad (17)$$

With (3) and (17), one obtains

$$\frac{T_k(c)}{T_k(a)} = \frac{R^k + 1/R^k}{r^k + 1/r^k} = f(\varphi_k) \quad , \quad (18)$$

where we set

$$f(\varphi) := \frac{\cosh((\log R)n\varphi/\pi)}{\cosh((\log r)n\varphi/\pi)} \quad , \quad \varphi_k := \frac{k\pi}{n}$$

Since f is continuous, bounded, and even, it can be expanded into the Fourier series

$$f(\varphi) = \frac{1}{2} \alpha_0 + \sum_{j=1}^{\infty} \alpha_j \cos(j\varphi) \quad , \quad -\pi \leq \varphi \leq \pi$$

By rewriting the expression (5) for σ_l in terms of (18) and, subsequently, using the discrete orthogonality relations of $\cos(l\varphi_k)$, $k, l = 0, \dots, n$, (see e.g. [7], p.472), we get

$$\begin{aligned} \sigma_l &= (-1)^l \left(\frac{1}{2}(f(0) + (-1)^l f(\pi)) + \sum_{k=1}^{n-1} f(\varphi_k) \cos(l\varphi_k) \right) \\ &= \begin{cases} \frac{n}{2}(-1)^l (\alpha_l + \sum_{m=1}^{\infty} (\alpha_{2mn-l} + \alpha_{2mn+l})) & \text{for } l = 1, \dots, n-1 \\ n(-1)^l (\alpha_n + \sum_{m=1}^{\infty} \alpha_{2(m+1)n}) & \text{for } l = n \end{cases} . \end{aligned}$$

It follows that all $\sigma_l \geq 0$ and, in view of Lemma 1, that the normalized Chebyshev polynomials (2) are optimal for (1), if the Fourier coefficients α_j of f satisfy

$$\alpha_j = (-1)^j |\alpha_j| \quad , \quad j = 1, 2, \dots \quad . \quad (19)$$

It is well known (see e.g. [6], Theorem 35) that (19) holds true if f is a convex function. Hence, in order to prove that the condition (a) in Theorem 2 guarantees the optimality of the polynomial (2) for (1), it only remains to show that (a) implies the convexity of f . Since f is even, we only need to consider $\varphi \geq 0$. Moreover, set $x := (\log r)n\varphi/\pi$ and $\gamma := \log R/\log r > 1$. Then, using standard calculus, we obtain

$$\begin{aligned} \frac{\cosh(x)}{\cosh(\gamma x)} \left(\frac{\pi}{n \log r} \right)^2 f''(\varphi) &= \gamma^2 - 1 - 2\gamma \tanh(x) \tanh(\gamma x) + 2 \tanh^2(x) \\ &\geq \gamma^2 - 1 - 2\gamma \tanh(x) + 2 \tanh^2(x) \\ &\geq \gamma^2 - 1 + 2 \min_{0 \leq y \leq 1} y(y - \gamma) \\ &= \begin{cases} (1 - \gamma)^2 & \text{if } \gamma > 2 \\ \gamma^2/2 - 1 & \text{if } \gamma \leq 2 \end{cases} . \end{aligned} \quad (20)$$

Therefore, (20) is nonnegative, and thus f convex, if $\gamma \geq \sqrt{2}$. This last condition is easily seen to be equivalent to the condition (a) in Theorem 2.

Remark 3. The main idea of the proof, namely to verify the positivity of the σ_l via the convexity of f , is due to Clayton [3]. However, in [3], it is claimed that f is convex in all cases $R > r > 1$. Unfortunately, this is not true in general.

Now, assume that the condition (b) of Theorem 2 is fulfilled. Again, we will use the notations $A_k = T_k(c)$ and $a_k = T_k(a)$. Note that, by the three-term recurrence formula of the Chebyshev polynomials,

$$A_{k+1} = 2cA_k - A_{k-1} \quad , \quad k = 1, 2, \dots \quad . \quad (21)$$

Next, set

$$\lambda_0 = \frac{A_n}{a_n}, \lambda_n = \frac{1}{2}, \text{ and, for } k = 1, 2, \dots, n-1, \lambda_k = \frac{A_{n-k}}{a_{n-k}}, \quad (22)$$

and let $s(\varphi)$ be the trigonometric polynomial defined by (6). With (5) and (6), one readily verifies that $\sigma_l = s(l\pi/n)$, and, in view of Lemma 1 and 2, we conclude that the polynomial (2) is indeed optimal for (1) if the numbers (22) satisfy

$$\lambda_n \geq 0, \lambda_{n-1} - 2\lambda_n \geq 0, \text{ and, for } k = 1, \dots, n-1, \lambda_{k-1} - 2\lambda_k + \lambda_{k+1} \geq 0. \quad (23)$$

The first condition in (23) is trivially true, and the second one follows from $A_1 > a_1$. Using (22), the remaining inequalities in (23) can be rewritten in the form

$$\frac{A_2}{a_2} - 2\frac{A_1}{a_1} + \frac{1}{2} \geq 0 \quad (24)$$

and

$$\frac{A_{j+1}}{a_{j+1}} - 2\frac{A_j}{a_j} + \frac{A_{j-1}}{a_{j-1}} \geq 0, \text{ for } j = 2, \dots, n-1. \quad (25)$$

A simple calculation shows, that (24) is equivalent to

$$c \geq c^* := \frac{a_2 + \sqrt{a^2 a_2 + 1}}{2a} \quad \left(= \frac{2a_r^2 - 1 + \sqrt{2a_r^4 - a_r^2 + 1}}{2a_r} \right) \quad (26)$$

which is just the condition (b). For the proof of Theorem 2, it only remains to show that (26) also implies (25). Let $j \geq 2$. First, by using (21), we deduce that

$$\begin{aligned} & \frac{A_{j+1}}{a_{j+1}} - 2\frac{A_j}{a_j} + \frac{A_{j-1}}{a_{j-1}} \\ &= A_j \left(2\left(\frac{c}{a_{j+1}} - \frac{1}{a_j}\right) + \frac{1}{2c}\left(\frac{1}{a_{j-1}} - \frac{1}{a_{j+1}}\right) \right) + \frac{A_{j-2}}{2c} \left(\frac{1}{a_{j-1}} - \frac{1}{a_{j+1}} \right) \\ &\geq \frac{A_j}{2ca_{j+1}a_ja_{j-1}} \left(4c^2 a_j a_{j-1} - 4ca_{j+1}a_{j-1} + a_j(a_{j+1} - a_{j-1}) \right). \end{aligned} \quad (27)$$

Next, set

$$Q_j(c) := 4c^2 a_j a_{j-1} - 4ca_{j+1}a_{j-1} + a_j(a_{j+1} - a_{j-1})$$

and note that Q_j attains its minimum at $a_{j+1}/(2a_j) < c^*$. Hence, in view of (27), (25) holds true, if $Q_j(c^*) \geq 0$ is fulfilled. This is indeed the case, and we will show by induction that

$$Q_j(c^*) \geq Q_2(c^*) \geq 0, \quad j = 2, 3, \dots \quad (28)$$

For $j = 2$, this follows with

$$\begin{aligned} Q_2(c^*) &= 4(c^*)^2 a_2 a - 4c^* a_3 a + a_2(a_3 - a) \\ &= a^{-1} \left(a_2(2a^4 - 3a^2 + 2) - (a_2 - 1)\sqrt{a^2 a_2 + 1} \right) \geq 0 \quad , \end{aligned}$$

since $\sqrt{2}a_2 \geq \sqrt{a^2 a_2 + 1}$ and $2a^4 - 3a^2 + 2 \geq \sqrt{2}(a_2 - 1)$ for $a \geq 1$. Finally, if (28) holds true for j , a routine, but lengthy, calculation shows that

$$\begin{aligned} Q_{j+1}(c^*) - Q_j(c^*) &= (a_2 - 1) \left(-4(c^*)^2 a + 2c^* \frac{a_{j+2}}{a_j} + a \right) + \left(\frac{a_{j+2}}{a_j} - 1 \right) Q_j(c^*) \\ &\geq (a_2 - 1) \left(-4(c^*)^2 a + 2c^* \frac{a_4}{a_2} + a \right) + \left(\frac{a_4}{a_2} - 1 \right) Q_2(c^*) \\ &= (a_2 - 1) \left(2(Q_2(c^*) - c^*) + a_3 \right) \geq 0 \end{aligned}$$

(note that $a_{j+2}/a_j \geq a_4/a_2$). Therefore, (28) is also satisfied for $j + 1$, and this completes the proof of Theorem 2.

5. Some Numerical Examples

In order to illustrate the range of parameters for which the normalized Chebyshev polynomials (2) are not optimal for the approximation problem (1), we present a few numerical examples. Let $r^* = r^*(n)$ denote the smallest $r > 1$ such that for all $r > r^*$ there exists a real number $c(r, n) > a_r$ such that for all $a_r < c < c(r, n)$ the polynomial (2) is not best possible in (1). For later use, let us denote by $c^*(r, n)$ the maximal $c(r, n)$ with this property. Recall, that in view of Theorems 1 and 2, $1 < r^*(n) < \infty$ exists for all integers $n \geq 5$. In Table I, the numerically computed values of $r^*(n)$ and the corresponding semi-axes of \mathcal{E}_{r^*} are listed for $5 \leq n \leq 20$.

Table I

Note that $r^*(n)$ tends to 1 as n increases.

The case that the normalized Chebyshev polynomials (2) are not optimal for (1) occurs only for c close to the ellipse. In Figure 1, for the cases $n = 5$ (solid line), $n = 7$ (dashed), $n = 10$ (dashdot), and $n = 15$ (dotted), the curves

$$\frac{c^*(r, n) - a_r}{a_r}$$

are plotted as functions of a_r .

Figure 1

For some cases for which (2) are not optimal for (1), we computed the best polynomials numerically. We were not able to detect any analytic representation of these polynomials.

Acknowledgement This work was done while the authors were visiting the Computer Science Department of Stanford University. We would like to thank Gene Golub for his warm hospitality.

References

1. O. AXELSSON, A restarted version of a generalized preconditioned conjugate gradient method, *Comm. Appl. Numer. Methods* 4 (1988), 521-530.
2. F. CHATELIN, "Valeurs Propres de Matrices", Masson, Paris, 1988.
3. A. J. CLAYTON, Further results on polynomials having least maximum modulus over an ellipse in the complex plane, U.K.A.E.A. Memorandum - AEEW - M 348, 1963.
4. B. FISCHER AND R. FREUND, On the constrained Chebyshev approximation problem on ellipses, *J. Approx. Theory*, to appear.
5. L.A. HAGEMAN AND D.M. YOUNG, "Applied Iterative Methods", Academic Press, New York, 1981.
6. G.H. HARDY AND W. ROGOSINSKI, "Fourier Series", Cambridge University Press, Cambridge, 1965.
7. Y.L. LUKE, "Mathematical Functions and Their Approximations", Academic Press, New York, 1975.
8. T.A. MANTEUFFEL, The Tchebychev iteration for nonsymmetric linear systems, *Numer. Math.* 28 (1977), 307-327.
9. G. MEINARDUS, "Approximation of Functions: Theory and Numerical Methods", Springer-Verlag, Berlin, Heidelberg, New York, 1967.

10. T.J. RIVLIN AND H.S. SHAPIRO, A unified approach to certain problems of approximation and minimization, *J. Soc. Indust. Appl. Math.* **9** (1961), 670-699.
11. W. ROGOSINSKI AND G. SZEGÖ, Über die Abschnitte von Potenzreihen, die in einem Kreise beschränkt bleiben, *Math. Z.* **28** (1928), 73-94.
12. Y. SAAD, Chebyshev acceleration techniques for solving nonsymmetric eigenvalue problems, *Math. Comp.* **42** (1984), 567-588.
13. H.E. WRIGLEY, Accelerating the Jacobi method for solving simultaneous equations by Chebyshev extrapolation when the eigenvalues of the iteration matrix are complex, *Computer J.* **6** (1963), 169-176.

n	r^*	a_{r^*}	b_{r^*}	n	r^*	a_{r^*}	b_{r^*}
5	2.6492	1.5133	1.1359	13	1.3402	1.0432	0.2970
6	2.0588	1.2723	0.7865	14	1.3111	1.0369	0.2742
7	1.8006	1.1780	0.6226	15	1.2867	1.0319	0.2547
8	1.6490	1.1277	0.5213	16	1.2658	1.0279	0.2379
9	1.5476	1.0969	0.4508	17	1.2478	1.0246	0.2232
10	1.4745	1.0764	0.3982	18	1.2321	1.0219	0.2103
11	1.4191	1.0619	0.3574	19	1.2183	1.0196	0.1988
12	1.3755	1.0512	0.3242	20	1.2061	1.0176	0.1885

Table I

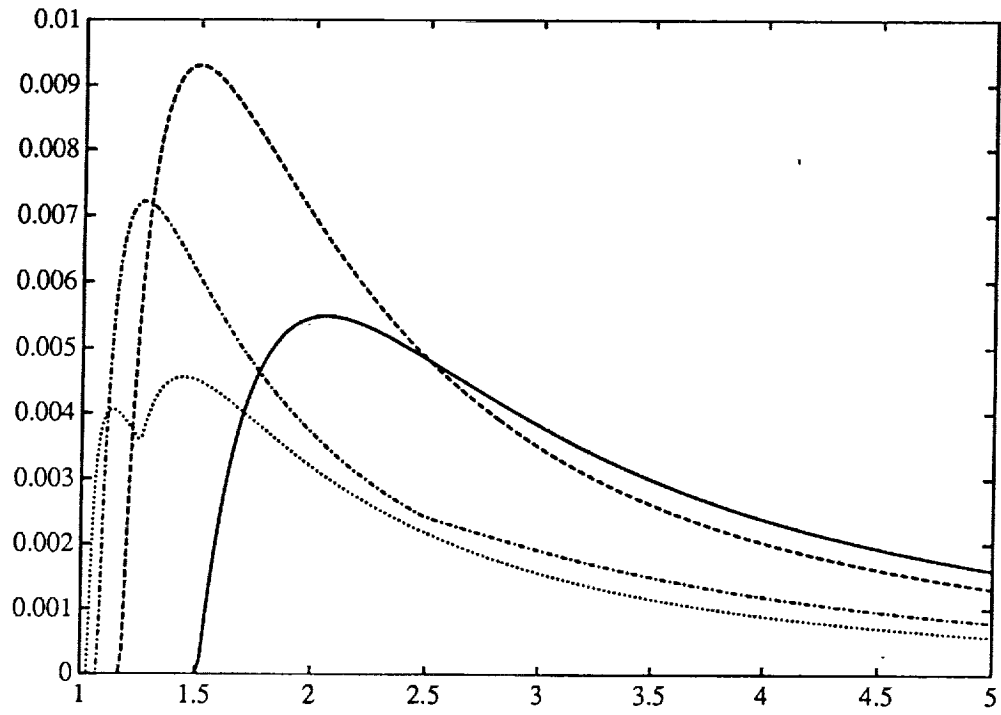


Figure 1