

FILE COPY
NO. 2-W

NATIONAL ADVISORY COMMITTEE FOR AERONAUTICS

REPORT No. 289

FORCES ON ELLIPTIC CYLINDERS IN UNIFORM AIR STREAM

By A. F. ZAHM, R. H. SMITH, and F. A. LOUDEN



UNITED STATES
GOVERNMENT PRINTING OFFICE
WASHINGTON
1928

FILE COPY
To be returned to
the files of the National
Advisory Committee
for Aeronautics
Washington, D. C.

AERONAUTICAL SYMBOLS

1. FUNDAMENTAL AND DERIVED UNITS

| | Symbol | Metric | | English | |
|-------------|----------|-----------------------------|--------|-----------------------|---------------|
| | | Unit | Symbol | Unit | Symbol |
| Length..... | <i>l</i> | meter..... | m | foot (or mile)..... | ft. (or mi.) |
| Time..... | <i>t</i> | second..... | sec | second (or hour)..... | sec. (or hr.) |
| Force..... | <i>F</i> | weight of one kilogram..... | kg | weight of one pound | lb. |
| Power..... | <i>P</i> | kg/m/sec..... | | horsepower..... | HP. |
| Speed..... | | km/hr..... | | mi./hr..... | M. P. H. |
| | | m/sec..... | | ft./sec..... | f. p. s. |

2. GENERAL SYMBOLS, ETC.

| | |
|---|--|
| <p><i>W</i>, Weight, = mg</p> <p><i>g</i>, Standard acceleration of gravity = 9.80665 m/sec.² = 32.1740 ft./sec.²</p> <p><i>m</i>, Mass, = $\frac{W}{g}$</p> <p>ρ, Density (mass per unit volume). Standard density of dry air, 0.12497 (kg-m⁻⁴ sec.²) at 15° C and 760 mm = 0.002378 (lb.- ft.⁻⁴ sec.²).</p> <p>Specific weight of "standard" air, 1.2255 kg/m³ = 0.07651 lb./ft.³</p> | <p>mk^2, Moment of inertia (indicate axis of the radius of gyration, <i>k</i>, by proper sub- script).</p> <p><i>S</i>, Area.</p> <p><i>S_w</i>, Wing area, etc.</p> <p><i>G</i>, Gap.</p> <p><i>b</i>, Span.</p> <p><i>c</i>, Chord length.</p> <p><i>b/c</i>, Aspect ratio.</p> <p><i>f</i>, Distance from <i>c. g.</i> to elevator hinge.</p> <p>μ, Coefficient of viscosity.</p> |
|---|--|

3. AERODYNAMICAL SYMBOLS

| | |
|--|--|
| <p><i>V</i>, True air speed.</p> <p><i>q</i>, Dynamic (or impact) pressure = $\frac{1}{2} \rho V^2$</p> <p><i>L</i>, Lift, absolute coefficient $C_L = \frac{L}{qS}$</p> <p><i>D</i>, Drag, absolute coefficient $C_D = \frac{D}{qS}$</p> <p><i>C</i>, Cross-wind force, absolute coefficient $C_C = \frac{C}{qS}$</p> <p><i>R</i>, Resultant force. (Note that these coeffi- cients are twice as large as the old co- efficients <i>L_C</i>, <i>D_C</i>.)</p> <p><i>i_w</i>, Angle of setting of wings (relative to thrust line).</p> <p><i>i_t</i>, Angle of stabilizer setting with reference to thrust line.</p> | <p>γ, Dihedral angle.</p> <p>$\rho \frac{Vl}{\mu}$, Reynolds Number, where <i>l</i> is a linear dimension. e. g., for a model airfoil 3 in. chord, 100 mi./hr. normal pressure, 0° C: 255,000 and at 15° C., 230,000; or for a model of 10 cm chord 40 m/sec, corresponding numbers are 299,000 and 270,000.</p> <p><i>C_p</i>, Center of pressure coefficient (ratio of distance of <i>C. P.</i> from leading edge to chord length).</p> <p>β, Angle of stabilizer setting with reference to lower wing, = (<i>i_t</i> - <i>i_w</i>).</p> <p>α, Angle of attack.</p> <p>ϵ, Angle of downwash.</p> |
|--|--|

REPORT No. 289

**FORCES ON ELLIPTIC CYLINDERS IN UNIFORM
AIR STREAM**

By A. F. ZAHM, R. H. SMITH, and F. A. LOUDEN

**Aerodynamical Laboratory, Bureau of Construction and Repair
United States Navy**

NATIONAL ADVISORY COMMITTEE FOR AERONAUTICS

NAVY BUILDING, WASHINGTON, D. C.

[An independent Government establishment, created by act of Congress approved March 3, 1915, for the supervision and direction of the scientific study of the problems of flight. It consists of 12 members who are appointed by the President, all of whom serve as such without compensation.]

JOSEPH S. AMES, Ph. D., *Chairman.*
Provost, Johns Hopkins University, Baltimore, Md.
DAVID W. TAYLOR, D. Eng., *Vice Chairman.*
Washington, D. C.
GEORGE K. BURGESS, Sc. D.,
Director, Bureau of Standards, Washington, D. C.
WILLIAM F. DURAND, Ph. D.,
Professor Emeritus of Mechanical Engineering, Stanford University, Calif.
JAMES E. FECHET, Major General, United States Army,
Chief of Air Corps, War Department, Washington, D. C.
WILLIAM E. GILLMORE, Brigadier General, United States Army,
Chief, Matériel Division, Air Corps, Wright Field, Dayton, Ohio.
EMORY S. LAND, Captain, United States Navy,
Assistant Chief, Bureau of Aeronautics, Navy Department, Washington, D. C.
CHARLES F. MARVIN, M. E.,
Chief, United States Weather Bureau, Washington, D. C.
WILLIAM A. MOFFETT, Rear Admiral, United States Navy,
Chief, Bureau of Aeronautics, Navy Department, Washington, D. C.
S. W. STRATTON, Sc. D.,
President, Massachusetts Institute of Technology, Cambridge, Mass.
ORVILLE WRIGHT, B. S.,
Dayton, Ohio.

Smithsonian Institution, Washington, D. C.

GEORGE W. LEWIS, *Director of Aeronautical Research.*
JOHN F. VICTORY, *Secretary.*
HENRY J. E. REID, *Engineer in Charge, Langley Memorial Aeronautical Laboratory,*
Langley Field, Va.
JOHN J. IDE, *Technical Assistant in Europe, Paris, France.*

EXECUTIVE COMMITTEE

JOSEPH S. AMES, *Chairman.*
DAVID W. TAYLOR, *Vice Chairman.*

| | |
|----------------------|---------------------|
| GEORGE K. BURGESS. | CHARLES F. MARVIN. |
| JAMES E. FECHET. | WILLIAM A. MOFFETT. |
| WILLIAM E. GILLMORE. | S. W. STRATTON. |
| EMORY S. LAND. | ORVILLE WRIGHT. |

JOHN F. VICTORY, *Secretary.*

REPORT No. 289

FORCES ON ELLIPTIC CYLINDER IN UNIFORM AIR STREAM

By A. F. Zahm, R. H. Smith, and F. A. Loudon

INTRODUCTION

This report presents the results of wind tunnel tests on four elliptic cylinders with various fineness ratios, conducted in the Navy Aerodynamic Laboratory, Washington. The object of the tests was to investigate the characteristics of sections suitable for streamline wire which normally has an elliptic section with a fineness ratio of 4.0; also to learn whether a reduction in fineness ratio would result in improvement; also to determine the pressure distribution on the model of fineness ratio 4.

Four elliptic cylinders with fineness ratios of 2.5, 3.0, 3.5, and 4.0 were made and then tested in the 8 by 8 foot tunnel; first, for cross-wind force, drag, and yawing moment at 30 miles an hour and various angles of yaw; next for drag at 0° pitch and 0° yaw and various wind speeds; then for end effect on the smallest and largest models; and lastly for pressure distribution over the surface of the largest model at 0° pitch and 0° yaw and various wind speeds. In all tests, the length of the model was transverse to the current. The results are given for standard air density, $\rho = .002378$ slug per cubic foot.

This account is a slightly revised form of Report No. 315, prepared for the Bureau of Aeronautics, July 13, 1926, and by it submitted for publication to the National Advisory Committee for Aeronautics. A summary of conclusions is given at the end of the text.

DESCRIPTION OF MODELS

The four elliptic cylinders, the smallest of which is shown in Figure 1, and profiles of which are shown in Figure 10, were each 62 inches long and 2 inches thick; their widths were 5, 6, 7, and 8 inches. The specified offsets are given in Table 1 and for each case can be derived from the equation of an ellipse. All of the cylinders were of laminated pine, varnished, and then verified by application of their construction templates. After the tests, however, a few measurements of offsets taken on the plane table indicated that the models were slightly unsymmetrical. The 2 by 8 inch cylinder had detachable end segments to fill up the space between the floor and ceiling of the tunnel during the pressure distribution test.

In a second test series adjoining end plates, Figure 1, were used to determine the end effect on two of the cylinders. They were made from fairly plane galvanized-iron plate and measured 24 by 24 inches.

In Figure 2 the pressure collector is shown inserted as a center segment in the 2 by 8 inch model. It was made of bronze accurate to 0.001 inch in the offsets. Its dimensions and the location of its 16 holes are given in Figure 3. The pressure leads, one running from a hole in the nose and the other successively from each surface hole, were each connected with $\frac{1}{4}$ -inch tubing which ran lengthwise through the strut to a manometer outside the tunnel.

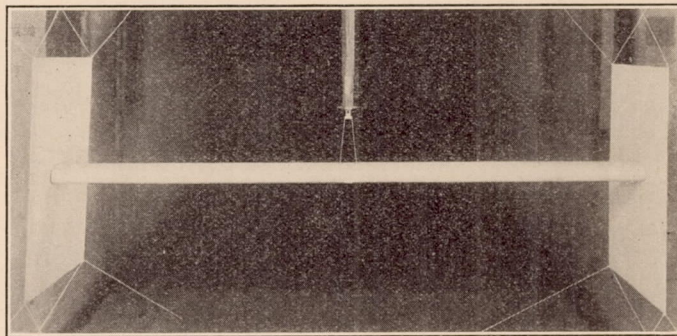


Fig. 1.—Elliptic cylinder 2 by 5 inches mounted with end plates

METHOD OF TESTING

To measure the forces and yawing moment, each cylinder was mounted, without end plates, at its center on the two-prong fork, Figure 1, extending from the shank of the tri-dimensional balance described in reference 1. The angle of yaw was varied from -6° to 20° by 2° intervals, the wind speed was held at 30 miles an hour, and the cross-wind force, drag, and yawing moment were simultaneously measured on the cylinder and exposed portion of the holder; then on the holder alone with the cylinder detached but not removed. The difference was taken as the true force or moment component. The precision of such measurements is given in Reference 2. The drag measurements with the cylinders at 0° pitch and 0° yaw were taken in the same way; the wind speed being varied from 20 to 60 miles an hour by 10 mile intervals.

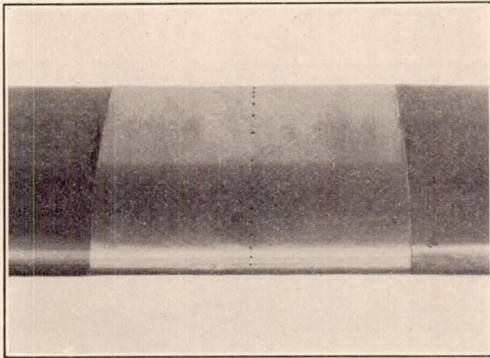


Fig. 2.—Pressure collector inserted in 2 by 8 inch elliptic cylinder

To determine the end effect of the smallest and largest cylinders, the plates were mounted at the ends of the model as shown in Figure 1, and the cross-wind force and drag were measured at intervals of 4° yaw. The measurements were repeated without the plates.

The percentage difference applied to the original force data gave values for the infinite cylinder.

The pressure distribution measurements were made on the 2 by 8 inch cylinder, which was mounted vertically in the tunnel with extension end segments accurately in line and with the pressure collector inserted in the middle of its span. The difference of pressure between the nose and each of the holes aft of the nose was determined successively. To do this all the surface holes were plugged except one which was joined to one pressure lead, while the nose hole was joined to the other lead. The wind speed was then varied from 20 to 70 miles an hour, by 10 mile intervals, and the differential pressure was measured on an alcohol manometer having a 1 to 10 slope. These measurements could be read in all cases to within 0.005 inch vertical of alcohol. Thus the point pressure could be determined to about one-half of 1 per cent for speeds above 40 miles an hour; to within less than 2 per cent for the lower speeds. The air speed was held constant to within one-half of 1 per cent.

RESULTS OF FORCE AND MOMENT MEASUREMENTS

The cross-wind force and drag on the 62-inch cylinders at various angles of yaw are given in Tables II and III together with their coefficients which are the respective forces divided by $\frac{1}{2} \rho V_1^2$ times the frontal area S , V_1

being feet per second. The coefficients are plotted in Figures 4 and 6.

The cross-wind coefficient ¹ increases positively at negative yaw and negatively at positive yaw as the fineness ratio is increased from 2.5 to 4.0. The fact that the force is not zero at zero yaw is probably due to the models being slightly unsymmetrical. The maximum coefficient is -4.28 for the 2 by 8 inch cylinder.

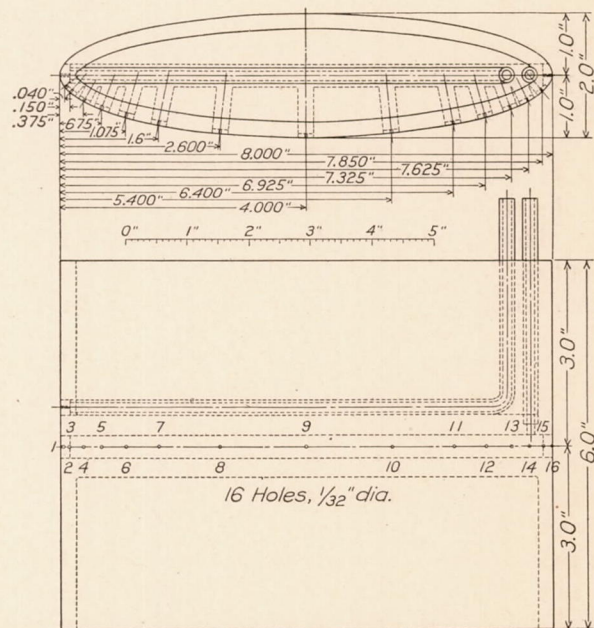


Fig. 3.—Bronze pressure collector for elliptic cylinder 2 by 8 inches, fineness ratio 4

¹ To express these cross-wind coefficients as lift coefficients, multiply them by frontal area/chord-plane area.

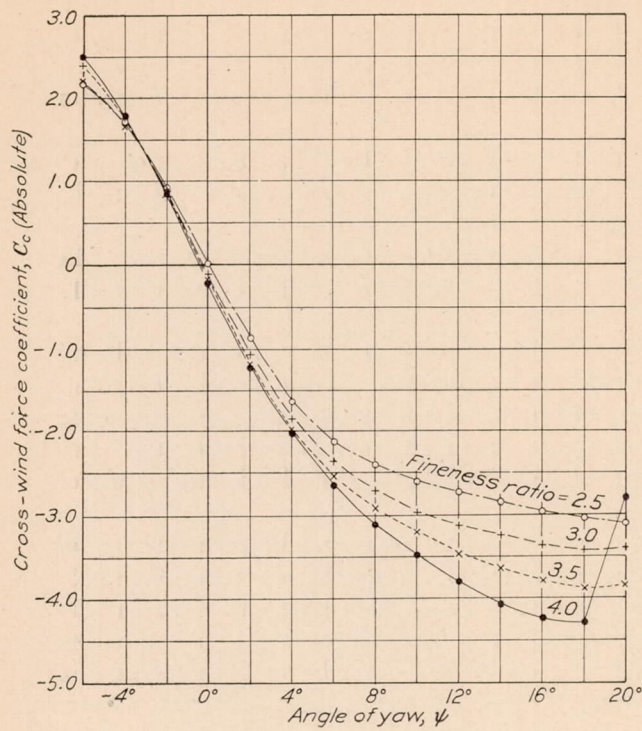


FIG. 4.—Elliptic cylinders of various fineness ratios. Length of cylinder 62 inches, models at 0° pitch, air speed 30 M. P. H.

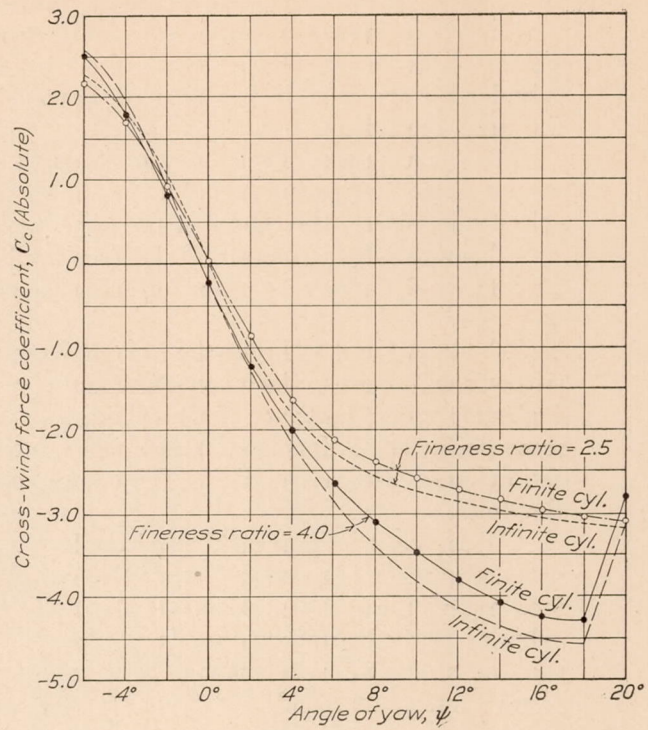


FIG. 5.—Elliptic cylinders of fineness ratios 2.5 and 4. Length of cylinder 62 inches, models at 0° pitch, air speed 30 M. P. H.

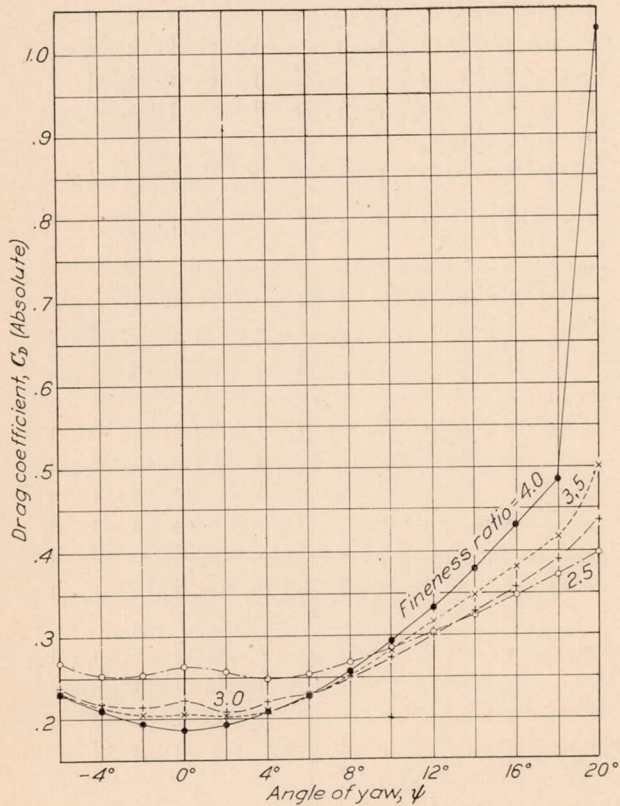


FIG. 6.—Elliptic cylinders of various fineness ratios. Length of cylinder 62 inches, models at 0° pitch, air speed 30 M. P. H.

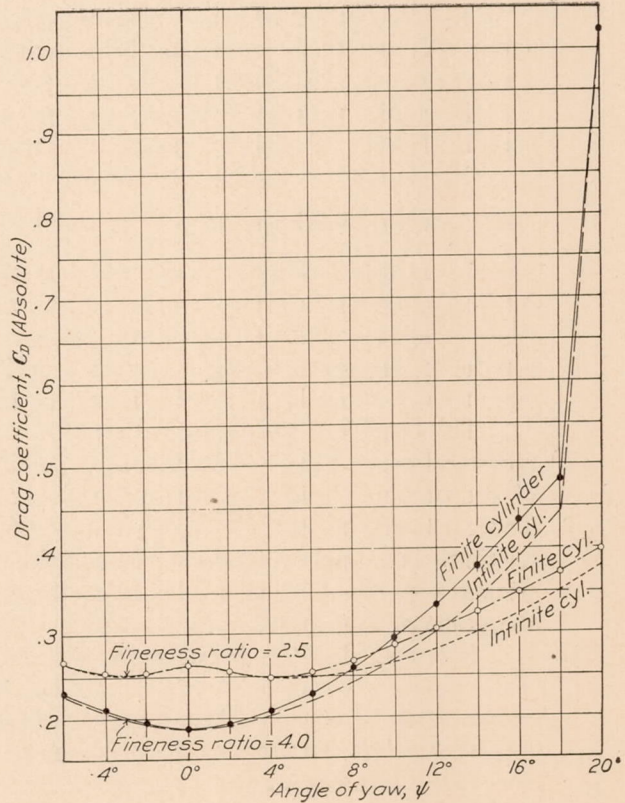


FIG. 7.—Elliptic cylinders of fineness ratios 2.5 and 4. Length of cylinder 62 inches, models at 0° pitch, air speed 30 M. P. H.

The drag coefficient is decreased by increasing the fineness ratio at zero yaw, but the difference is less as the yaw increases and between 4° and 6° the cylinder of fineness ratio 3.5 has a drag coefficient equally as low as the 2 by 8 inch cylinder. From 6° to 13° , the 2 by 6 inch cylinder has the least drag coefficient; beyond 13° yaw, the greater the fineness ratio the greater the drag coefficient.

The yawing moment about the N-axis is presented in Table IV; the resulting lines of force and the center of pressure travel are shown in Figures 9 and 10. As the fineness ratio of the cylinder increases, the center of pressure moves slightly aft.

The ratio of the forces C/D , is given in Table 5 and the graphs are given in Figure 8. The 2 by 8 inch cylinder is superior for angles of yaw up to 16° . C/D max. for this cylinder is -12 at 8° yaw.

Tables VI and VII give the force measurements on the smallest and largest model with and without end plates, the percentage difference and the coefficients for the infinite cylinder; Figures 5 and 7 compare the coefficients of the finite and infinite cylinders. The cross-wind force coefficient is increased positively at negative yaw and negatively at positive yaw when the cylinder becomes endless. The drag coefficient for the infinite cylinder is less than for the finite.

With the cylinders at 0° pitch and yaw, the resistance and corresponding coefficients for various speeds are given in Table VIII and plotted in Figure 11. Here the resistance of the 62-inch cylinder was taken to be substantially the same as for a 62-inch segment of an infinite cylinder, as the increment due to end effect was small and could not be measured. On comparing the four struts, it is seen that at high speeds the drag coefficient is not lowered by increase of fineness ratio; at speeds of 50 and 60 miles an hour, the models with fineness ratios of 3.0 and 3.5 have a lower coefficient than the 2 by 8 inch model.

RESULTS OF PRESSURE DISTRIBUTION MEASUREMENTS

The differential pressure measurements made on the 2 by 8 inch cylinder are presented in Table IX, and their conversion from inches of alcohol on a 1 to 10 slope to vertical inches of water is also given. Table X gives the point pressure at the several holes found by subtracting the differential pressure from the nose pressure. These data are plotted in Figures 12 and 13. Table XI gives the point pressure in terms of the nose pressure.

One sees from Figure 12 that for this strut shape the point pressure at all used speeds decreases from full impact $\frac{1}{2} \rho V^2$ at the nose to zero at a distance of 2.1 per cent of the cylinder width from the nose; the maximum suction occurs at about three-eighths of the width from the leading edge and is equal to about .6 the nose pressure. For speeds of 40 to 70 miles an hour there is another point of zero pressure near the trailing edge and a positive pressure aft of that; for the lower speeds, a slight suction is still evident at the trailing edge. Figure 13 shows that the pressure at each hole varies nearly as the square of the velocity.

The graphs of the faired values of the point pressure, multiplied by $(70/V)^2$ to make them comparable are shown in Figure 14. The integrals of each pressure graph, giving the elements of the pressure drag and the summation of these or the resultant pressure-drag, are given in Table 12 and plotted in Figure 15. With them are shown the total drag and the resultant friction. The order of graphic integration here used to find the force $\int p dy$ over the various portions of the surface of the 1-foot-long center segment of the cylinder is detailed in the diagrams of Figure 17.

It is seen that the downstream push and the upstream suction vary as V^n . The upstream push is zero at low speeds since the pressure did not become positive near the trailing edge of the model at these speeds. The difference between the total downstream and upstream pressure forces, which is the pressure drag, is seen to increase up to a speed of 35 miles an hour and then decrease. The difference between the curves of total drag and pressure drag, giving the frictional drag, varies as V^n where $n = 1.97$.

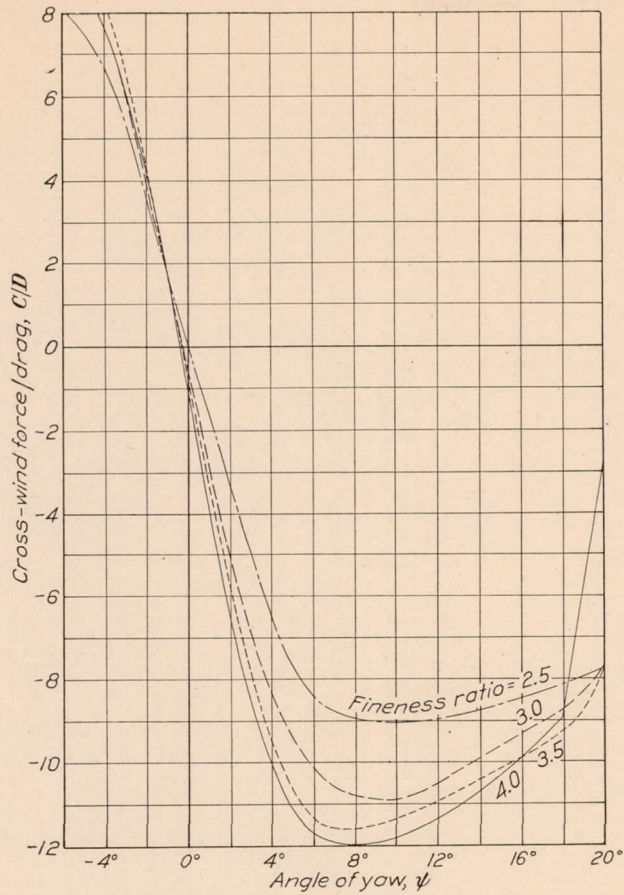


FIG. 8.—Elliptic cylinders of various fineness ratios. Length of cylinder 62 inches, models at 0° pitch, air speed 30 M. P. H.

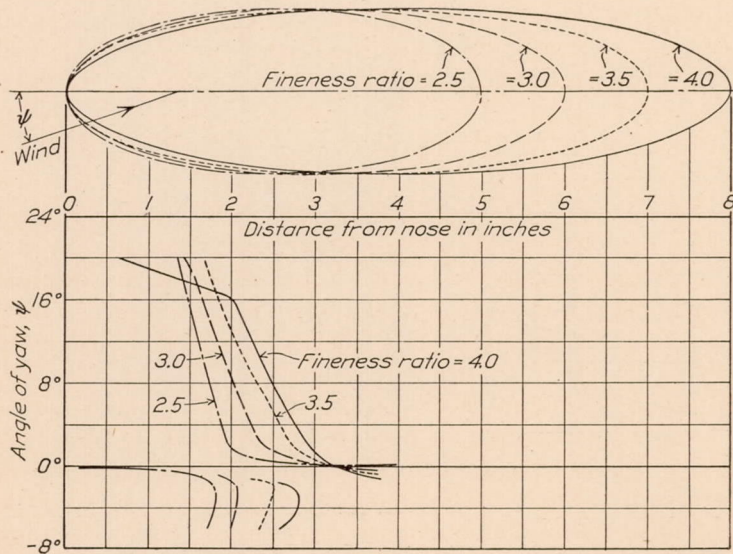


FIG. 10.—Center of pressure at various angles of yaw, of elliptic cylinders of various fineness ratios. Length of cylinder 62 inches, models at 0° pitch, air speed 30 M. P. H.

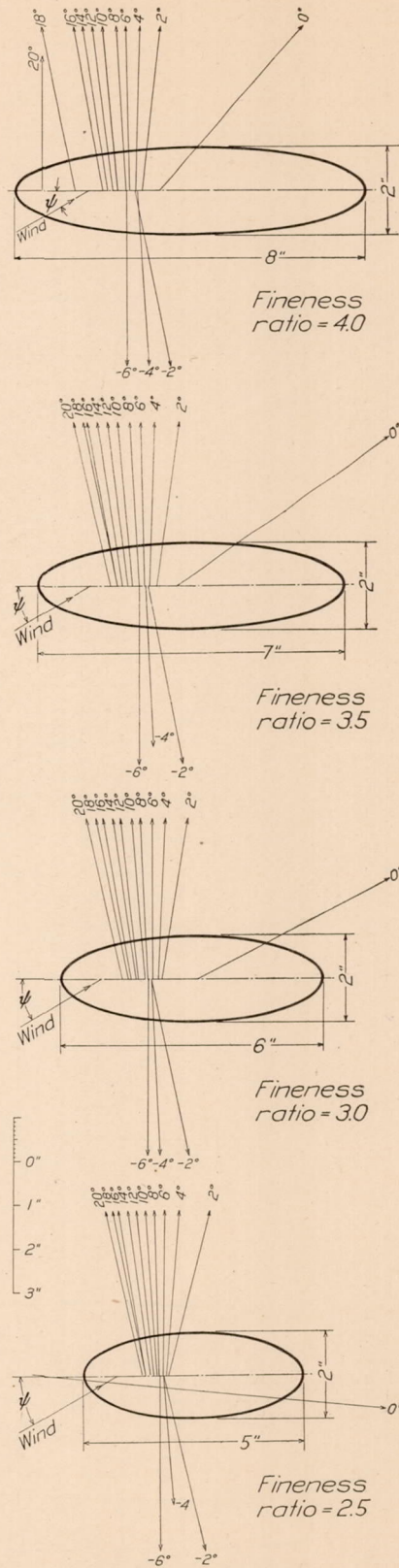


FIG. 9.—Lines of resultant air force at 30 M. P. H. of elliptic cylinders of various fineness ratios. Length of cylinder 62 inches, models yawed at 0° pitch

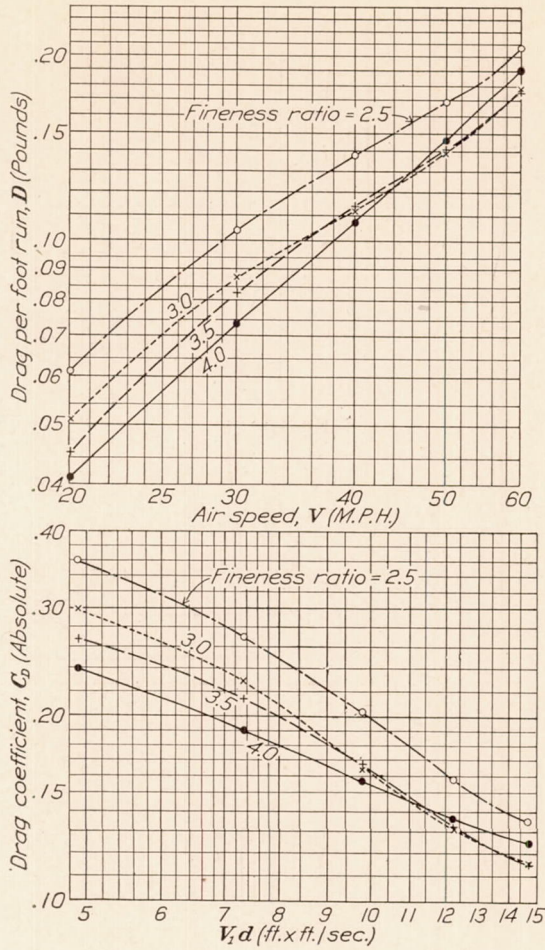


Fig. 11.—Elliptic cylinders at various fineness ratios. Models at 0° pitch and 0° yaw

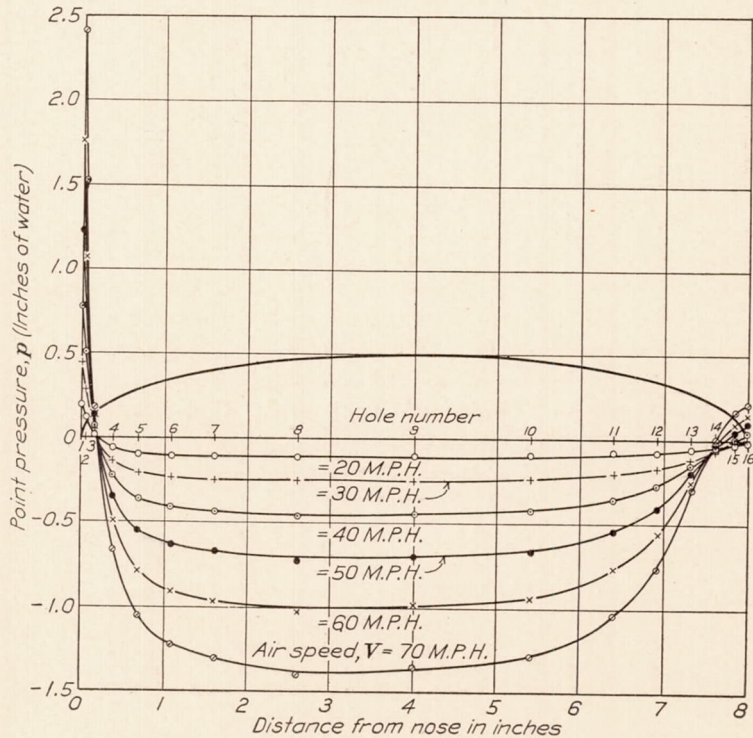


Fig. 12.—Elliptic cylinder 2 by 8 inches at various air speeds. Model at 0° pitch and 0° yaw

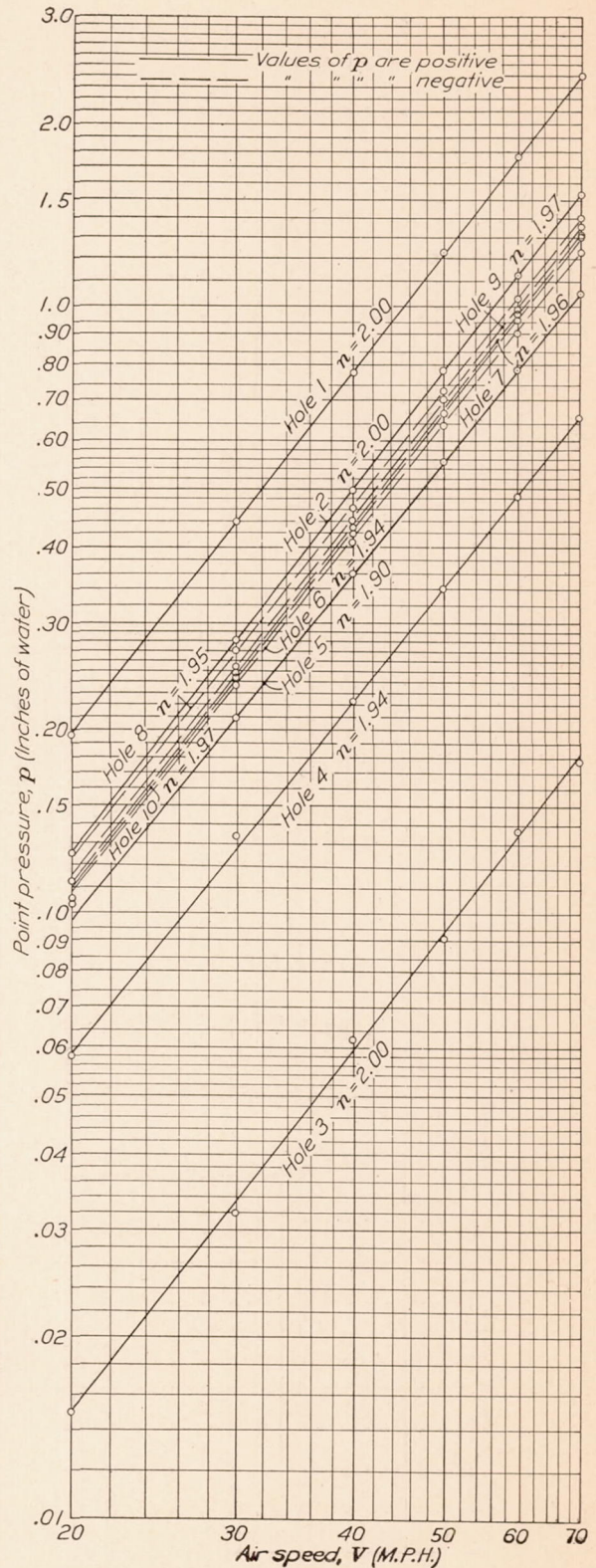


Fig. 13.—Elliptic cylinder with fineness ratio of 4. Model at 0° pitch and 0° yaw

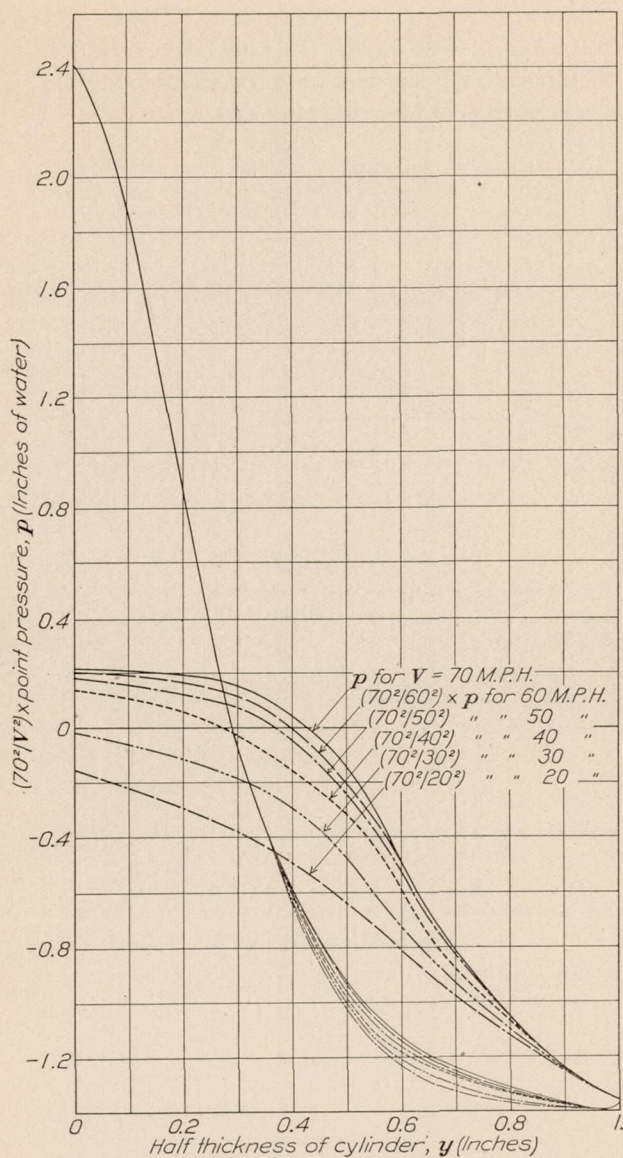


FIG. 14.—Elliptic cylinder 2 by 8 inches, model at 0° pitch and 0° yaw

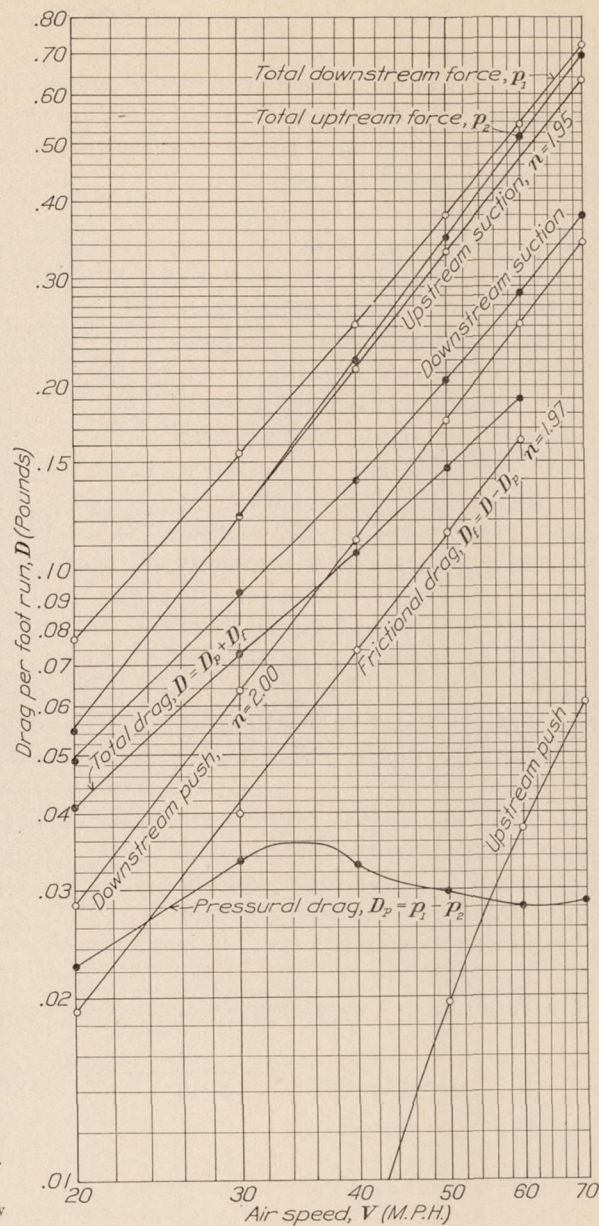


FIG. 15.—Elliptic cylinder 2 by 8 inches, model at 0° pitch and 0° yaw

Figure 16 portrays theoretical curves of point pressure and zonal pressure drag together with the measured pressure, all at 40 miles an hour, and the pressure drag computed from these measurements. Formulas for the theoretical curves are given in reference 3.

The measured pressures agree well with the theoretical except at the rear where the flow is turbulent. The pressure drag is a maximum where $p = 0$ and a minimum amidships. The whole pressure drag on the front half of the model is negative. Theoretically this is balanced by the rear drag, but actually there is a downstream resultant which here is one-third the whole measured drag or one-half the friction drag.

CONCLUSIONS

From Figures 4, 6, 8, it is seen that for $V_1 d = 7.33$ (ft. \times ft./sec.) the best characteristics occur when the elliptic cylinder has a fineness ratio of 4.0. Figure 11 indicates that the above conclusion would hold for small Reynolds Numbers, but for large Reynolds Numbers, $V_1 d > 11$, the drag is less for a cylinder fineness ratio of 3.0 or 3.5, and this would probably result in an improved

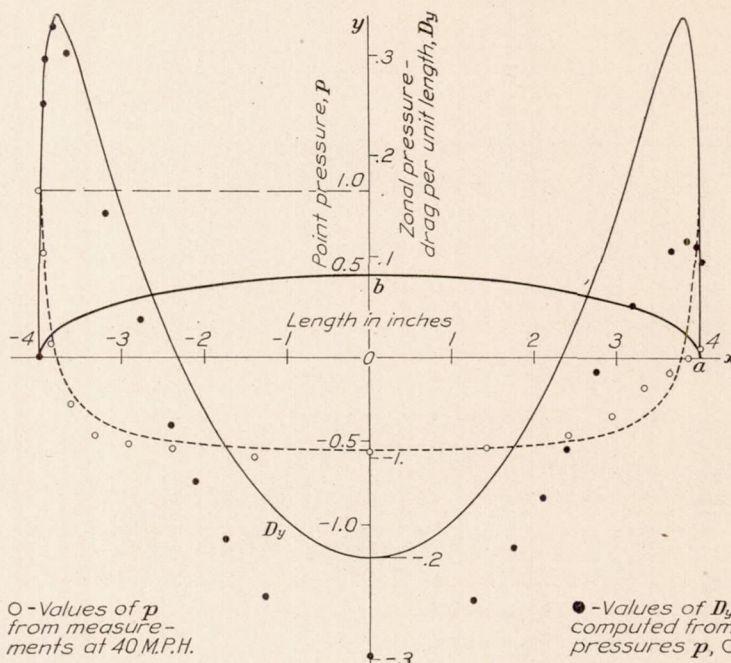
C/D curve which would mean that improved characteristics could be obtained with a fineness ratio smaller than 4.0.

If we assume a speed of 150 miles an hour and streamline wire with a thickness of one-fourth inch, $V_1 d = 4.6$ (ft. \times ft./sec.), at such a Reynolds Number an elliptic section with a fineness ratio of 4.0 would have better characteristics than a section with a smaller fineness ratio.

Comparing the point pressure over the surface of the elliptic cylinder with that over the surface of the Navy No. 1 modified strut given in Reference 4, it is seen that the maximum suction is further aft for the elliptic section, and the streamlined trailing edge of the strut results in the pressure being zero at the same point near the trailing edge for any speed, while for the elliptic cylinder as the speed decreases the pressure is zero further aft, and for the low-test speeds there is still a suction at the trailing edge. Thus the character of the air flow at the after part of the elliptic cylinder is different for different speeds.

For an elliptic cylinder or any simple quadric, fixed at any attitude in a uniform infinite stream of inviscid liquid, it can

be shown, Reference 3, that the zonal pressure drag is upstream on the fore part; downstream on the rear part; zero on the whole. The model in Figure 16 exhibits these properties except that the resultant pressure drag, owing to viscosity, is not quite zero.



O - Values of p from measurements at 40 M.P.H.

● - Values of D_y computed from pressures p , O

Fig. 16.—Elliptic cylinder 2 by 8 inches. Graphs indicate theoretical values. $p = 1 - (a+b)^2 y^2 / [b^2 + (a^2 - b^2) y^2]$ where unit pressure = $\rho V^2 / 2$. $D_y = 2 \int_0^y p dy$

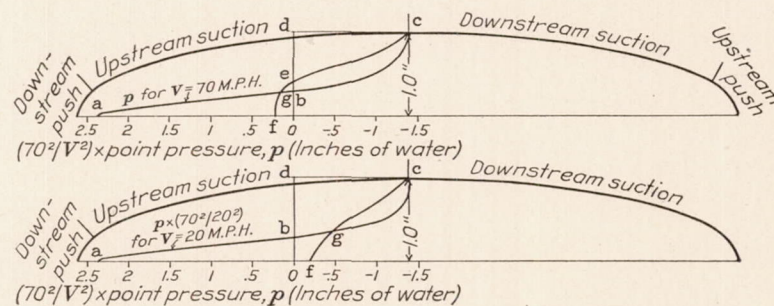


Fig. 17.—For $V = 40, 50, 60,$ or 70 M. P. H.
 Downstream push \propto abo
 Downstream suction \propto ced
 Upstream push \propto eof
 Upstream suction \propto bed
 Total area = (abo + ced) - (eof + bed)
 = agf - ggc
 For $V = 20$ or 30 M. P. H.
 Downstream push \propto abo
 Downstream suction \propto cfod
 Upstream push = 0
 Upstream suction \propto bgcd
 Total area = (abo + cfod) - (0 + bgcd)
 = abgf - ggc

At 40 miles an hour the drag coefficient of the 2 by 8 inch elliptic strut, at zero yaw and with free ends, is about 2.5 times that previously found for the best Navy strut, as given in Reference 4.

REFERENCES

Reference 1.—A. F. Zahm, "The Six-Component Wind Balance." N. A. C. A. Technical Report No. 146, 1922.
 Reference 2.—Aeronautics Staff, "Air Force and Center of Pressure of M-80 Airfoil." C. & R. Aeronautical Report No. 175, March 31, 1921.

Reference 3.—A. F. Zahm, "Flow and Drag Formulas for Simple Quadrics." N. A. C. A. Technical Report No. 253, 1926.

Reference 4.—A. F. Zahm, R. H. Smith, and G. C. Hill, "Point Drag and Total Drag of Navy Struts No. 1 Modified." N. A. C. A. Technical Report No. 137, 1922.

[Elliptics cylinder. Various fineness ratios]

TABLE I
SPECIFIED OFFSETS

| Distance from leading edge (inches) | | | | Thickness (inches) |
|-------------------------------------|----------------------|----------------------|----------------------|--------------------|
| 2 by 5 inch cylinder | 2 by 6 inch cylinder | 2 by 7 inch cylinder | 2 by 8 inch cylinder | |
| 0. | 0. | 0. | 0. | 0. |
| .050 | .060 | .070 | .080 | .399 |
| .125 | .150 | .175 | .200 | .624 |
| .250 | .300 | .350 | .400 | .872 |
| .275 | .450 | .525 | .600 | 1.054 |
| .500 | .600 | .700 | .800 | 1.200 |
| .750 | .900 | 1.050 | 1.200 | 1.428 |
| 1.000 | 1.200 | 1.400 | 1.600 | 1.600 |
| 1.500 | 1.800 | 2.100 | 2.400 | 1.833 |
| 2.000 | 2.400 | 2.800 | 3.200 | 1.960 |
| 2.500 | 3.000 | 3.500 | 4.000 | 2.000 |
| 3.000 | 3.600 | 4.200 | 4.800 | 1.960 |
| 3.500 | 4.200 | 4.900 | 5.600 | 1.833 |
| 4.000 | 4.800 | 5.600 | 6.400 | 1.600 |
| 4.250 | 5.100 | 5.950 | 6.800 | 1.428 |
| 4.500 | 5.400 | 6.300 | 7.200 | 1.200 |
| 4.625 | 5.550 | 6.475 | 7.400 | 1.054 |
| 4.750 | 5.700 | 6.650 | 7.600 | .872 |
| 4.875 | 5.850 | 6.825 | 7.800 | .624 |
| 4.950 | 5.940 | 6.930 | 7.920 | .399 |
| 5.000 | 6.000 | 7.000 | 8.000 | 0. |

[Elliptic cylinders. Various fineness ratio]

TABLE II
NET MEASURED CROSS-WIND FORCE AT 30 M. P. H. AND CROSS-WIND FORCE COEFFICIENTS

Model at 0° pitch

| Angle of yaw (degrees) | Cross-wind force on 62-inch cylinder C (pounds) | | | | Cross-wind force coefficient $C_c=2C/\rho V_1^2 S$ (absolute) | | | |
|------------------------|---|--------|--------|--------|---|---------|---------|---------|
| | Fineness ratio | | | | | | | |
| | 2.5 | 3.0 | 3.5 | 4.0 | 2.5 | 3.0 | 3.5 | 4.0 |
| -6 | +4.308 | +4.366 | +4.761 | +4.969 | +2.1733 | +2.2026 | +2.4019 | +2.5068 |
| -4 | 3.383 | 3.326 | 3.526 | 3.550 | 1.7067 | 1.6779 | 1.7788 | 1.7909 |
| -2 | 1.828 | +1.676 | +1.741 | +1.662 | .9222 | +.8455 | +.8783 | +.8385 |
| 0 | +.058 | -.234 | -.284 | -.420 | +.0293 | -.1181 | -.1433 | -.2119 |
| +2 | -1.722 | -2.116 | -2.344 | -2.448 | -.8687 | -1.0675 | -1.1825 | -1.2350 |
| 4 | -3.241 | -3.698 | -3.945 | -4.005 | -1.6350 | -1.8656 | -1.9902 | -2.0205 |
| 6 | -4.203 | -4.640 | -5.005 | -5.247 | -2.1204 | -2.3408 | -2.5250 | -2.6470 |
| 8 | -4.738 | -5.353 | -5.774 | -6.152 | -2.3903 | -2.7005 | -2.9129 | -3.1036 |
| 10 | -5.124 | -5.896 | -6.336 | -6.886 | -2.5850 | -2.9745 | -3.1964 | -3.4739 |
| 12 | -5.384 | -6.146 | -6.856 | -7.526 | -2.7162 | -3.1006 | -3.4588 | -3.7968 |
| 14 | -5.633 | -6.415 | -7.195 | -8.037 | -2.8418 | -3.2363 | -3.6298 | -4.0546 |
| 16 | -5.851 | -6.645 | -7.475 | -8.394 | -2.9518 | -3.3523 | -3.7710 | -4.2347 |
| 18 | -6.000 | -6.769 | -7.664 | -8.489 | -3.0269 | -3.4149 | -3.8664 | -4.2826 |
| +20 | -6.109 | -6.721 | -7.574 | -5.534 | -3.0819 | -3.3907 | -3.8210 | -2.7918 |

C_c = Cross-wind force coefficient = $2C/\rho V_1^2 S$.
 C = Net (model without holder) cross-wind force in pounds.
 S = Frontal area of cylinder = 0.8611 sq. ft.
 V_1 = Air speed = 44 ft./sec.
 ρ = Air density = 0.002378 slug/cu. ft.

[Elliptic cylinders. Various fineness ratio]

TABLE III
NET MEASURED DRAG AT 30 M. P. H. AND DRAG COEFFICIENTS
Model at 0° pitch

| Angle of yaw (degrees) | Drag of 62-inch cylinder D (pounds) | | | | Drag coefficient $C_D=2D/\rho V_1^2 S$ (absolute) | | | |
|---------------------------|---------------------------------------|-------|-------|-------|---|--------|--------|--------|
| | Fineness ratio | | | | | | | |
| | 2.5 | 3.0 | 3.5 | 4.0 | 2.5 | 3.0 | 3.5 | 4.0 |
| -6 | 0.531 | 0.471 | 0.464 | 0.456 | 0.2679 | 0.2376 | 0.2341 | 0.2300 |
| -4 | .501 | .431 | .424 | .416 | .2527 | .2174 | .2139 | .2099 |
| -2 | .503 | .424 | .404 | .385 | .2538 | .2139 | .2038 | .1942 |
| 0 | .521 | .441 | .406 | .369 | .2628 | .2225 | .2048 | .1862 |
| +2 | .507 | .411 | .401 | .383 | .2558 | .2073 | .2023 | .1932 |
| 4 | .491 | .437 | .411 | .411 | .2477 | .2205 | .2073 | .2073 |
| 6 | .501 | .454 | .449 | .449 | .2527 | .2290 | .2265 | .2265 |
| 8 | .530 | .494 | .498 | .511 | .2674 | .2492 | .2512 | .2578 |
| 10 | .566 | .542 | .560 | .583 | .2855 | .2734 | .2825 | .2941 |
| 12 | .602 | .594 | .628 | .660 | .3037 | .2997 | .3168 | .3330 |
| 14 | .643 | .649 | .693 | .751 | .3244 | .3274 | .3496 | .3789 |
| 16 | .690 | .706 | .756 | .858 | .3481 | .3562 | .3814 | .4329 |
| 18 | .736 | .774 | .830 | .954 | .3713 | .3905 | .4187 | .4813 |
| +20 | .791 | .868 | .991 | 2.029 | .3991 | .4379 | .4999 | 1.0236 |

 C_D = Drag coefficient = $2D/\rho V_1^2 S$. D = Net (model without holder) drag in pounds. S = Frontal area of cylinder = 0.8611 sq. ft. V_1 = Air speed = 44 ft./sec. ρ = Air density = 0.002378 slug/cu. ft.

[Elliptic cylinders. Various fineness ratio]

TABLE IV
NET MEASURED YAWING MOMENT ABOUT N=AXIS¹ OF MODEL HOLDER IN POUND-INCHES AT 30 M. P. H.
Model at 0° pitch

| Angle of yaw (degrees) | Fineness ratio | | | |
|---------------------------|----------------|---------|---------|---------|
| | 2.5 | 3.0 | 3.5 | 4.0 |
| -6 | -2.738 | -3.109 | -4.587 | -5.807 |
| -4 | -3.295 | -3.329 | -4.433 | -5.135 |
| -2 | -3.821 | -3.519 | -3.857 | -4.029 |
| 0 | -3.794 | -3.161 | -2.727 | -2.346 |
| +2 | -2.546 | -1.601 | -.634 | +.288 |
| 4 | -.640 | +.522 | +2.356 | 3.514 |
| 6 | +1.404 | 2.856 | 5.444 | 7.092 |
| 8 | 3.383 | 5.381 | 8.337 | 10.311 |
| 10 | 5.244 | 7.860 | 11.528 | 14.406 |
| 12 | 7.190 | 10.306 | 14.772 | 18.246 |
| 14 | 9.218 | 12.376 | 17.856 | 21.828 |
| 16 | 11.336 | 14.882 | 20.728 | 25.212 |
| 18 | 12.963 | 16.837 | 22.633 | 32.251 |
| +20 | +14.696 | +18.590 | +24.215 | +18.732 |

¹ N=axis is 6.91 inches above chord of cylinder for all fineness ratios, and 2.26 inches aft of nose for fineness ratio=2.0; 2.72 inches aft of nose for fineness ratio=3.0; 3.35 inches aft of nose for fineness ratio=3.5; 3.84 inches aft of nose for fineness ratio=4.0.

[Elliptic cylinders. Various fineness ratio]

TABLE V

C/D AT 30 M. P. H. FOR 62 INCH LONG CYLINDERS

Model at 0° pitch

| Angle of yaw (degrees) | Fineness ratio | | | |
|---------------------------|----------------|-------|-------|-------|
| | 2.5 | 3.0 | 3.5 | 4.0 |
| -6----- | +8.12 | +9.28 | +10.3 | +10.4 |
| -4----- | 6.76 | 7.72 | 8.32 | 7.56 |
| -2----- | 3.63 | +3.95 | +4.31 | +4.32 |
| 0----- | +1.111 | -531 | -700 | -1.14 |
| +2----- | -3.40 | -5.15 | -5.85 | -6.62 |
| 4----- | -6.61 | -8.46 | -9.60 | -10.1 |
| 6----- | -8.40 | -10.2 | -11.4 | -11.7 |
| 8----- | -8.94 | -10.8 | -11.6 | -12.0 |
| 10----- | -9.06 | -10.9 | -11.3 | -11.8 |
| 12----- | -8.95 | -10.3 | -10.9 | -11.4 |
| 14----- | -8.77 | -9.89 | -10.4 | -10.7 |
| 16----- | -8.48 | -9.42 | -9.89 | -9.79 |
| 18----- | -8.15 | -8.75 | -9.23 | -8.90 |
| +20----- | -7.72 | -7.75 | -7.65 | -2.73 |

[Elliptic cylinders. Fineness ratio=2.5 and 4.0.]

TABLE VI

CROSS-WIND FORCE WITH AND WITHOUT END PLATES AT 30 M. P. H., PERCENTAGE DIFFERENCE, AND COEFFICIENT FOR INFINITE CYLINDER

Model at 0° pitch

| Angle of yaw (degrees) | Cross-wind force on 62-inch cylinder (pounds) | | Percentage difference $\frac{100(C'-C)}{C}$ | Cross-wind force coefficient (absolute) | |
|------------------------|---|----------------------|---|---|---|
| | Without end plates C | With end plates C' | | Finite cylinder $C_c = 2 C_p V^2 S$. (See Table 2) | Infinite cylinder $C_c + C_c \times \frac{C'-C}{C}$ |
| Fineness ratio = 2.5 | | | | | |
| -4----- | +3.332 | +3.560 | +6.8 | +1.7067 | +1.8228 |
| 0----- | -.108 | -.133 | 23.1 | +.0293 | +.0361 |
| +4----- | -3.226 | -3.576 | 10.9 | -1.6350 | -1.8132 |
| 8----- | -4.801 | -5.178 | 7.9 | -2.3903 | -2.5791 |
| 12----- | -5.591 | -5.878 | 5.1 | -2.7162 | -2.8547 |
| 16----- | -6.155 | -6.393 | 3.9 | -2.9518 | -3.0669 |
| +20----- | -6.517 | -6.707 | +2.9 | -3.0819 | -3.1713 |
| Fineness ratio = 4.0 | | | | | |
| -4----- | +3.376 | +3.745 | +10.9 | +1.7909 | +1.9861 |
| 0----- | -.070 | -.078 | 11.4 | -.2119 | -.2361 |
| +4----- | -3.632 | -3.923 | 8.0 | -2.0205 | -2.1821 |
| 8----- | -6.016 | -6.590 | 9.5 | -3.1036 | -3.3984 |
| 12----- | -7.624 | -8.289 | 8.7 | -3.7968 | -4.1271 |
| 16----- | -8.594 | -9.151 | 6.5 | -4.2347 | -4.5100 |
| +20----- | -6.949 | -7.796 | +12.2 | -2.7918 | -3.1324 |

[Elliptic cylinders. Fineness ratio=2.5 and 4.0]

TABLE VII
 DRAG WITH AND WITHOUT END PLATES AT 30 M. P. H., PERCENTAGE DIFFERENCE,
 AND COEFFICIENT FOR INFINITE CYLINDER

Model at 0° pitch

| Angle of yaw (degrees) | Drag of 62-inch cylinder (pounds) | | Percentage difference $100 \frac{(D' - D)}{D}$ | Drag coefficient (absolute) | |
|---------------------------|-----------------------------------|----------------------------|--|---|--|
| | Without end plates D | With end plates D' | | Finite cylinder $C_D = 2D \rho V_1^2 S$ (See Table 3) | Infinite cylinder $C_D + C_D \times \frac{D' - D}{D}$ |
| Fineness ratio=2.5 | | | | | |
| -4 | 0.492 | 0.484 | -1.63 | 0.2527 | 0.2511 |
| 0 | .515 | .517 | +.39 | .2628 | .2638 |
| +4 | .498 | .494 | -.80 | .2477 | .2457 |
| 8 | .541 | .513 | -5.18 | .2674 | .2535 |
| 12 | .595 | .549 | -7.74 | .3037 | .2802 |
| 16 | .680 | .629 | -7.50 | .3481 | .3220 |
| +20 | .798 | .758 | -5.02 | .3991 | .3791 |
| Fineness ratio=4.0 | | | | | |
| -4 | 0.397 | 0.388 | -2.27 | 0.2099 | 0.2051 |
| 0 | .349 | .352 | +.86 | .1862 | .1878 |
| +4 | .389 | .379 | -2.57 | .2073 | .2020 |
| 8 | .488 | .455 | -6.77 | .2578 | .2403 |
| 12 | .641 | .577 | -9.99 | .3330 | .2997 |
| 16 | .839 | .751 | -10.49 | .4329 | .3875 |
| +20 | 1.668 | 1.640 | -1.68 | 1.0236 | 1.0064 |

[Elliptic cylinders. Various fineness ratio.]

TABLE VIII
DRAG AND DRAG COEFFICIENTS AT VARIOUS SPEEDS

Model at 0° pitch and 0° yaw

| Air speed (M. P. H.) | Net ¹ measured drag of 62-inch cylinder or 62-inch segment of infinite cylinder (pounds) | Net drag per foot run, D (pounds) | $V_1 d$ (ft.×ft./sec.) | Drag coefficient $C_D = \frac{2D}{\rho V_1^2 S}$ |
|----------------------|---|-------------------------------------|------------------------|--|
| Fineness ratio=2.5 | | | | |
| 20----- | 0.316 | 0.061 | 4.88 | 0.3587 |
| 30----- | .535 | .104 | 7.33 | .2699 |
| 40----- | .715 | .138 | 9.78 | .2029 |
| 50----- | .866 | .168 | 12.22 | .1573 |
| 60----- | 1.072 | .207 | 14.67 | .1352 |
| Fineness ratio=3.0 | | | | |
| 20----- | 0.262 | 0.051 | 4.88 | 0.2974 |
| 30----- | .452 | .087 | 7.33 | .2280 |
| 40----- | .581 | .112 | 9.78 | .1649 |
| 50----- | .720 | .139 | 12.22 | .1308 |
| 60----- | .916 | .177 | 14.67 | .1155 |
| Fineness ratio=3.5 | | | | |
| 20----- | 0.235 | 0.045 | 4.88 | 0.2667 |
| 30----- | .424 | .082 | 7.33 | .2139 |
| 40----- | .591 | .114 | 9.78 | .1677 |
| 50----- | .728 | .141 | 12.22 | .1322 |
| 60----- | .908 | .176 | 14.67 | .1145 |
| Fineness ratio=4.0 | | | | |
| 20----- | 0.210 | 0.041 | 4.88 | 0.2384 |
| 30----- | .377 | .073 | 7.33 | .1902 |
| 40----- | .551 | .107 | 9.78 | .1564 |
| 50----- | .752 | .146 | 12.22 | .1366 |
| 60----- | .986 | .191 | 14.67 | .1244 |

 V_1 = Air speed in ft./sec. d = Thickness of cylinder = 0.16667 ft. S = Frontal area per foot run of cylinder = 0.16667 sq. ft. ρ = Air density = 0.002378 slug/cu. ft.¹ Net indicates model without holder. At 0° the increment due to end effect was negligible.

[Elliptic cylinder 2 by 8 inches]

TABLE IX

OBSERVED DIFFERENCE IN PRESSURE BETWEEN NOSE AND HOLES AFT OF NOSE, dp

$$dp = \frac{1}{2} \rho V^2 - p$$

Model at 0° pitch and 0° yaw

| Number of hole | Air speed in miles per hour | | | | | |
|---|-----------------------------|------|-------|-------|-------|-------|
| | 20 | 30 | 40 | 50 | 60 | 70 |
| dp in inches of alcohol on 1 to 10 slope and 0.832 specific gravity | | | | | | |
| 1----- | 0 | 0 | 0 | 0 | 0 | 0 |
| 2----- | .85 | 1.93 | 3.42 | 5.33 | 7.67 | 10.57 |
| 3----- | 2.17 | 4.95 | 8.70 | 13.70 | 19.65 | 26.85 |
| 4----- | 3.05 | 6.95 | 12.15 | 18.92 | 27.15 | 36.90 |
| 5----- | 3.50 | 7.87 | 13.85 | 21.45 | 30.72 | 41.67 |
| 6----- | 3.60 | 8.20 | 14.40 | 22.45 | 32.17 | 43.78 |
| 7----- | 3.63 | 8.32 | 14.67 | 22.80 | 32.96 | 44.75 |
| 8----- | 3.70 | 8.60 | 15.10 | 23.52 | 33.70 | 45.88 |
| 9----- | 3.63 | 8.40 | 14.83 | 23.23 | 33.18 | 45.33 |
| 10----- | 3.50 | 8.30 | 14.58 | 22.85 | 32.71 | 44.68 |
| 11----- | 3.27 | 7.75 | 13.80 | 21.35 | 30.55 | 41.64 |
| 12----- | 3.23 | 7.30 | 12.77 | 19.64 | 28.08 | 38.25 |
| 13----- | 3.08 | 6.68 | 11.15 | 17.10 | 24.25 | 32.53 |
| 14----- | 2.80 | 6.05 | 10.21 | 15.40 | 21.63 | 28.90 |
| 15----- | 2.70 | 5.70 | 9.44 | 14.22 | 20.10 | 26.93 |
| 16----- | 2.50 | 5.38 | 8.90 | 13.65 | 19.50 | 26.38 |
| dp converted to inches of water | | | | | | |
| 1----- | 0 | 0 | 0 | 0 | 0 | 0 |
| 2----- | .071 | .161 | .284 | .443 | .638 | .879 |
| 3----- | .181 | .412 | .724 | 1.139 | 1.634 | 2.233 |
| 4----- | .254 | .578 | 1.010 | 1.573 | 2.258 | 3.069 |
| 5----- | .291 | .654 | 1.152 | 1.784 | 2.556 | 3.464 |
| 6----- | .299 | .682 | 1.197 | 1.866 | 2.674 | 3.640 |
| 7----- | .302 | .692 | 1.220 | 1.895 | 2.741 | 3.721 |
| 8----- | .308 | .716 | 1.255 | 1.955 | 2.803 | 3.815 |
| 9----- | .302 | .698 | 1.233 | 1.932 | 2.759 | 3.770 |
| 10----- | .291 | .690 | 1.212 | 1.900 | 2.720 | 3.715 |
| 11----- | .272 | .645 | 1.148 | 1.775 | 2.540 | 3.462 |
| 12----- | .269 | .616 | 1.062 | 1.632 | 2.335 | 3.181 |
| 13----- | .256 | .556 | .928 | 1.422 | 2.017 | 2.708 |
| 14----- | .233 | .503 | .850 | 1.281 | 1.800 | 2.403 |
| 15----- | .225 | .474 | .785 | 1.183 | 1.671 | 2.240 |
| 16----- | .208 | .447 | .740 | 1.135 | 1.621 | 2.194 |

[Elliptic cylinder 2 by 8 inches]

TABLE X

POINT PRESSURE, p , IN INCHES OF WATER AT THE 16 HOLES

$$p = \frac{1}{2} \rho V^2 - dp$$

Model at 0° pitch and 0° yaw

| Number of hole | Air speed in miles per hour | | | | | |
|----------------|-----------------------------|--------|--------|--------|--------|--------|
| | 20 | 30 | 40 | 50 | 60 | 70 |
| 1 | +0.196 | +0.444 | +0.786 | +1.230 | +1.771 | +2.411 |
| 2 | .125 | .283 | .502 | .787 | 1.133 | 1.532 |
| 3 | +.015 | +.032 | +.062 | +.091 | +.137 | +.178 |
| 4 | -.058 | -.134 | -.224 | -.343 | -.487 | -.658 |
| 5 | -.095 | -.210 | -.366 | -.554 | -.785 | -1.053 |
| 6 | -.103 | -.238 | -.411 | -.636 | -.903 | -1.229 |
| 7 | -.106 | -.248 | -.434 | -.665 | -.970 | -1.310 |
| 8 | -.112 | -.272 | -.469 | -.725 | -1.032 | -1.404 |
| 9 | -.106 | -.254 | -.447 | -.702 | -.988 | -1.359 |
| 10 | -.095 | -.246 | -.426 | -.670 | -.949 | -1.304 |
| 11 | -.076 | -.201 | -.362 | -.545 | -.769 | -1.051 |
| 12 | -.073 | -.172 | -.276 | -.402 | -.564 | -.770 |
| 13 | -.060 | -.112 | -.142 | -.192 | -.246 | -.297 |
| 14 | -.037 | -.059 | -.064 | -.051 | -.029 | +.008 |
| 15 | -.029 | -.030 | +.001 | +.047 | +.100 | .171 |
| 16 | -.012 | -.003 | +.046 | +.095 | +.150 | +.217 |

[Elliptic cylinder 2 by 8 inches]

TABLE XI

POINT PRESSURE IN TERMS OF NOSE PRESSURE $p/\frac{1}{2}\rho V^2$, AT VARIOUS AIR SPEEDS

Model at 0° pitch and 0° yaw

| Number of hole | Air speed in miles per hour | | | | | |
|----------------|-----------------------------|--------|--------|--------|--------|--------|
| | 20 | 30 | 40 | 50 | 60 | 70 |
| 1 | +1.000 | +1.000 | +1.000 | +1.000 | +1.000 | +1.000 |
| 2 | .638 | .638 | .639 | .640 | .640 | .637 |
| 3 | +.077 | +.072 | +.079 | +.074 | +.077 | +.074 |
| 4 | -.296 | -.302 | -.285 | -.279 | -.275 | -.273 |
| 5 | -.485 | -.473 | -.465 | -.450 | -.443 | -.437 |
| 6 | -.525 | -.535 | -.522 | -.517 | -.509 | -.509 |
| 7 | -.544 | -.559 | -.550 | -.541 | -.547 | -.543 |
| 8 | -.574 | -.612 | -.596 | -.589 | -.582 | -.583 |
| 9 | -.544 | -.572 | -.569 | -.571 | -.557 | -.564 |
| 10 | -.485 | -.554 | -.542 | -.545 | -.535 | -.542 |
| 11 | -.388 | -.454 | -.460 | -.443 | -.434 | -.436 |
| 12 | -.372 | -.388 | -.351 | -.327 | -.318 | -.319 |
| 13 | -.306 | -.252 | -.180 | -.156 | -.139 | -.123 |
| 14 | -.189 | -.133 | -.081 | -.041 | -.016 | +.003 |
| 15 | -.148 | -.068 | +.001 | +.038 | +.056 | .071 |
| 16 | -.061 | -.007 | +.059 | +.077 | +.085 | +.090 |

[Elliptic cylinder 2 by 8 inches]

TABLE XII

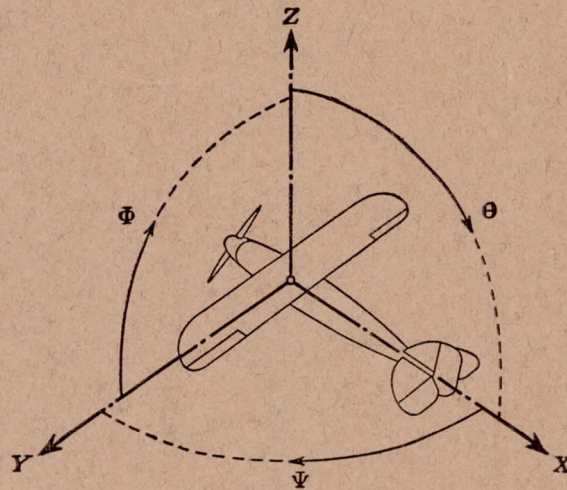
ALONG-STREAM FORCES PER FOOT RUN OF CYLINDER EXPRESSED IN POUNDS AND IN TERMS OF TOTAL MEASURED DRAG

Model at 0° pitch and 0° yaw

| Air speed (M. P. H.) | Downstream | | | Upstream | | | Pressural drag $D_p = p_1 - p_2$ | Frictional drag D_f | Total drag $D = D_p + D_f$ |
|---------------------------------|------------|---------|-------------|----------|---------|-------------|-------------------------------------|-----------------------------|-------------------------------|
| | Push | Suction | Total p_1 | Push | Suction | Total p_2 | | | |
| Pounds per foot run | | | | | | | | | |
| 20----- | 0. 0282 | 0. 0490 | 0. 0772 | 0 | 0. 0548 | 0. 0548 | 0. 0224 | 0. 019 | 0. 041 |
| 30----- | . 0633 | . 0921 | . 1554 | 0 | . 1222 | . 1222 | . 0332 | . 040 | . 073 |
| 40----- | . 1125 | . 1406 | . 2531 | . 0068 | . 2134 | . 2202 | . 0329 | . 074 | . 107 |
| 50----- | . 1761 | . 2044 | . 3805 | . 0196 | . 3311 | . 3507 | . 0298 | . 116 | . 146 |
| 60----- | . 2536 | . 2855 | . 5391 | . 0378 | . 4734 | . 5112 | . 0279 | . 163 | . 191 |
| 70----- | . 3450 | . 3807 | . 7257 | . 0608 | . 6363 | . 6971 | . 0286 | ----- | ----- |
| Per cent of total measured drag | | | | | | | | | |
| 20----- | 69 | 120 | 189 | 0 | 134 | 134 | 55 | 45 | 100 |
| 30----- | 87 | 126 | 213 | 0 | 167 | 167 | 46 | 54 | 100 |
| 40----- | 105 | 131 | 236 | 6 | 199 | 205 | 31 | 69 | 100 |
| 50----- | 121 | 140 | 261 | 13 | 227 | 240 | 21 | 79 | 100 |
| 60----- | 133 | 149 | 282 | 20 | 248 | 268 | 14 | 86 | 100 |
| 70----- | ----- | ----- | ----- | ----- | ----- | ----- | ----- | ----- | ----- |

ADDITIONAL COPIES
OF THIS PUBLICATION MAY BE PROCURED FROM
THE SUPERINTENDENT OF DOCUMENTS
U.S. GOVERNMENT PRINTING OFFICE
WASHINGTON, D. C.
AT
10 CENTS PER COPY

▽



Positive directions of axes and angles (forces and moments) are shown by arrows

| Axis | | Force (parallel to axis) symbol | Moment about axis | | | Angle | | Velocities | |
|-------------------|-------------|--|-------------------|-------------|-----------------------|------------------|-------------|--|---------|
| Designation | Sym- bol | | Designa- tion | Sym- bol | Positive direction | Designa- tion | Sym- bol | Linear (compo- nent along axis) | Angular |
| Longitudinal..... | X | X | rolling..... | L | Y → Z | roll..... | Φ | u | p |
| Lateral..... | Y | Y | pitching..... | M | Z → X | pitch..... | Θ | v | q |
| Normal..... | Z | Z | yawing..... | N | X → Y | yaw..... | Ψ | w | r |

Absolute coefficients of moment

$$C_L = \frac{L}{q b S} \quad C_M = \frac{M}{q c S} \quad C_N = \frac{N}{q f S}$$

Angle of set of control surface (relative to neutral position), δ . (Indicate surface by proper subscript.)

4. PROPELLER SYMBOLS

D , Diameter.
 p_e , Effective pitch
 p_g , Mean geometric pitch.
 p_s , Standard pitch.
 p_v , Zero thrust.
 p_a , Zero torque.
 p/D , Pitch ratio.
 V' , Inflow velocity.
 V_s , Slip stream velocity.

T , Thrust.
 Q , Torque.
 P , Power.

(If "coefficients" are introduced all units used must be consistent.)

η , Efficiency = $T V/P$.
 n , Revolutions per sec., r. p. s.
 N , Revolutions per minute., R. P. M.
 Φ , Effective helix angle = $\tan^{-1} \left(\frac{V}{2\pi r n} \right)$

5. NUMERICAL RELATIONS

1 HP = 76.04 kg/m/sec. = 550 lb./ft./sec.
 1 kg/m/sec. = 0.01315 HP.
 1 mi./hr. = 0.44704 m/sec.
 1 m/sec. = 2.23693 mi./hr.

1 lb. = 0.4535924277 kg.
 1 kg = 2.2046224 lb.
 1 mi. = 1609.35 m = 5280 ft.
 1 m = 3.2808333 ft.