

**Geopositional Accuracy Validation of Orthorectified Landsat TM Imagery:
Northeast Asia**

Prepared By

**Lockheed Martin Space Operations – Stennis Programs
John C. Stennis Space Center, MS 39529-6000**

Prepared For

**Earth Science Applications Directorate
National Aeronautics and Space Administration
John C. Stennis Space Center, MS 39529-6000**

September 17, 2003

Prepared by:

Charles M. Smith
Lockheed Martin Space Operations – Stennis Programs,
Remote Sensing Directorate

Date

Accepted by:

Mary Pagnutti, Earth Science Support Manager
Lockheed Martin Space Operations – Stennis Programs,
Remote Sensing Directorate

Date

Approved by:

Vicki Zanoni, V&V Project Manager
NASA Earth Science Applications Directorate

Date

Scope of Work

This report provides results of an independent assessment of the geospatial accuracy of the Earth Satellite (EarthSat) Corporation's GeoCover™ orthorectified Landsat Thematic Mapper (TM) imagery over Northeast Asia. This imagery was purchased through NASA's Earth Science Enterprise (ESE) Scientific Data Purchase (SDP) program.

Background

The EarthSat data procured through the SDP was orthorectified using a small set of scenes within a large geographic region, or block. Each of these scenes contained government provided ground control coordinates. A geometric model of the block was created based on the controlled scenes. This model was then applied to the rest of the scenes in the block.

Approach

The orthorectified Landsat TM imagery's geospatial accuracy was estimated using a standard procedure that utilizes geodetic control points provided by the U.S. government. The approach was to use a small sample of independently controlled scenes to estimate the horizontal geospatial accuracy of the orthorectified products and to compare that estimate to the geospatial accuracy specified by NASA contract NAS13-98046 with the Earth Satellite Corporation. The contract specifies that the orthorectified TM product shall have a geospatial Root Mean Square Error (RMSE) accuracy of 50 meters.

Dataset

Six Landsat TM scenes over the Northeast Asia region were used in this activity. The selection of scenes used for the validation was dependent upon the availability of geodetic ground control points. Appendix A contains a map showing the location of the scenes used for validation in relation to the entire block processed by Earth Satellite Corporation. Earth Science Applications (ESA) Directorate personnel imported each orthorectified TM scene from GeoTIFF format to ERDAS IMAGINE format. Analysts used ERDAS IMAGINE software to analyze each 7-band scene.

Geodetic Control Reference Data

The U.S. government provided a set of geodetic control points for use in this assessment. This ground control information was available only for specific parts of the globe. Of the available points, selected points were omitted as described in the Procedure section below. The control information was available in the form of both hardcopy documentation and softcopy computer files that duplicated the hardcopy coordinate documentation. The softcopy version enabled the importing of control point reference data into image processing software with minimal opportunities for error.

Table 1 provides scene-specific information for the Landsat TM scenes used in this assessment, including TM path/row identifiers, acquisition dates, the total number of control points available, and the total number of control points used in the validation activity for each scene. *(Note: These test points were used only in this validation and not in Earth Satellite Corporation’s orthorectification process.)*

Table 1. Geodetic Control Point Information

Scene Path/Row	Acquisition Date	Number of Control Points Available	Number of Control Points Used
114/34	9/27/1987	13	5
115/31	9/29/1991	13	10
116/34	5/17/1989	12	9
116/36	9/22/1992	12	9
117/33	6/1/1992	16	9
126/25	8/3/1989	14	7
Total		80	49

Procedure

The first step was to process the data using the Ground Control Point (GCP) Editor function available in the ERDAS IMAGINE image processing software. For each scene, the control Point ID, the X-Coordinate (UTM-East), and the Y-Coordinate (UTM-North) were entered into a comma-delimited ASCII file and then imported into the GCP Editor’s Point ID, X-Reference, and Y-Reference fields. This action caused ground control point markers to appear on the image displayed in the reference viewer. The resulting image served as a reference dataset for checking geositional accuracy and for determining approximately where each control point fell within an image. The analyst then used a separate ERDAS IMAGINE viewer to zoom in and to locate the feature associated with a control point on the given Landsat TM scene using a control diagram and descriptive remarks to place the test points in the proper location. This action populated the X-Input and Y-Input fields in the software’s GCP editor. If the analyst could not discern the proper location or if the point fell outside the imagery’s geographical extent, the point was omitted. The remaining points served as the input.

After selecting the usable control points, the analyst exported an ASCII file that contained the Point IDs, the input coordinates, and the reference coordinates for each scene examined. Because most of the ASCII files contained fewer than 20 test points, and because the Federal Geographic Data Committee recommends a sample size of at least 20 points, the files for individual scenes were combined into one large file. This file provided the input required to execute a Visual Basic program that computes X-differences and Y-differences and that estimates geositional accuracy. For each point, the Visual Basic program computed the X-differences and Y-differences, the squares of the X-differences and Y-differences, the X-RMSE and Y-RMSE, and the net RMSE (accuracy) using the following accuracy formulas:

$$\text{RMSE}_X = \sqrt{\frac{\sum (X_{input} - X_{control})^2}{n}}$$
$$\text{RMSE}_Y = \sqrt{\frac{\sum (Y_{input} - Y_{control})^2}{n}}$$
$$\text{RMSE}_{net} = \sqrt{(\text{RMSE}_X)^2 + (\text{RMSE}_Y)^2}$$

where X_{input} , Y_{input} are the coordinates of the input points; $X_{control}$, $Y_{control}$ are the coordinates of the reference points; and n is the total number of usable control points.

Results

The calculations shown in Appendix B indicate that the RMSE, or net horizontal displacement, of the Northeast Asia GeoCover™ orthorectified TM imagery block is 35.39 meters.

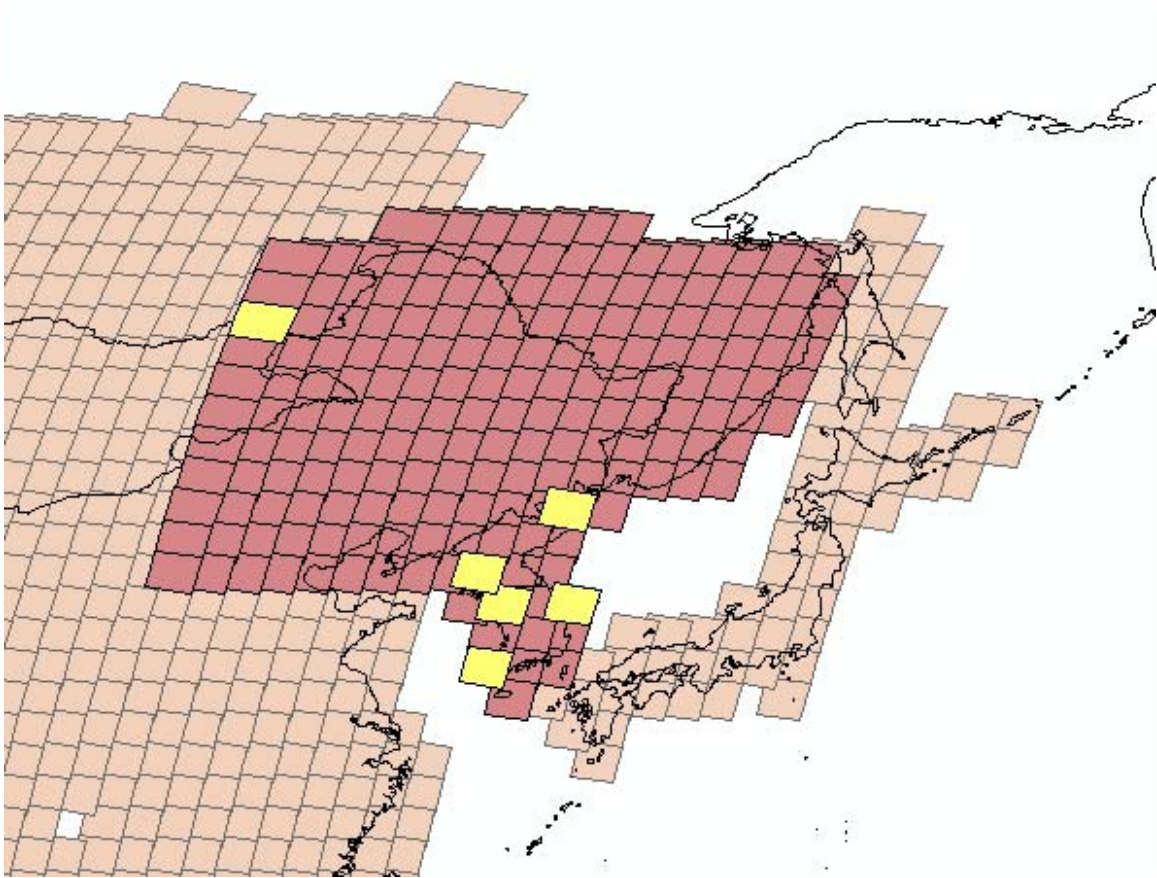
Appendix C provides a cartographic representation showing the locations of the scenes used in validating the Northeast Asia GeoCover orthorectified TM imagery block. This cartographic output, derived from a government-provided, vector-based program, shows overall error within each scene used in the validation via a resultant vector. The resultant vector's length represents the overall magnitude of error. The direction of the resultant vector is the overall direction of error.

Limitations

Sample size and selection of test points were dependent upon the quantity, quality, and utility of the data available. These test points were selected from surplus ground control information that is available only for certain parts of the globe.

The possibility exists for inherent analyst bias because of the variability in image interpretation and pattern recognition capabilities. Final selection of points reflected user subjectivity.

Appendix A



Northeast Asia TM Coverage
Validated scenes appear highlighted in yellow.

Appendix B

Accuracy Computations for Northeast Asia Block GeoCover™
(all measurements in meters)

Number	X (geocover)	X (Control)	diff in X	squared diff in X	Y (geocover)	Y (control)	diff in Y	squared diff in Y
11403408	516748.92	516727.94	-20.99	440.39	4143085.44	4143088.62	3.18	10.10
11403410	497312.68	497323.56	10.87	118.24	4085541.59	4085488.19	-53.40	2851.35
11403412	537224.86	537187.44	-37.42	1400.56	4101234.20	4101239.78	5.58	31.09
11403417	658750.48	658742.84	-7.64	58.29	4154418.38	4154455.88	37.50	1406.55
11403418	658835.27	658853.17	17.90	320.55	4152978.11	4153011.84	33.73	1137.71
11503001	632416.90	632400.76	-16.14	260.56	4691556.39	4691584.06	27.67	765.63
11603105	516764.89	516772.10	7.21	52.01	4672743.85	4672761.35	17.50	306.08
11503105	557658.01	557661.11	3.11	9.64	4663712.16	4663704.41	-7.75	60.12
11603109	452452.87	452470.36	17.49	305.77	4640469.66	4640483.48	13.83	191.16
11603110	475792.69	475774.16	-18.53	343.53	4623398.52	4623416.49	17.98	323.21
11503102	568872.07	568865.51	-6.56	43.08	4625394.78	4625419.03	24.25	588.11
11503103	566480.08	566443.05	-37.03	1371.32	4582042.64	4582076.84	34.20	1169.64
11503132	560934.06	560920.84	-13.22	174.77	4704148.10	4704159.80	11.69	136.75
11503134	457539.96	457535.45	-4.51	20.35	4602240.48	4602245.56	5.08	25.84
11503135	518358.08	518338.19	-19.90	395.84	4595382.03	4595411.40	29.37	862.66
11603311	318298.53	318352.96	54.42	2961.87	4230465.08	4230430.93	-34.15	1166.15
11603312	396593.21	396597.36	4.15	17.22	4212481.62	4212474.99	-6.64	44.08
11603408	323407.43	323376.51	-30.93	956.57	4106158.03	4106126.58	-31.45	988.91
11603409	369688.34	369698.45	10.11	102.18	4110568.60	4110527.08	-41.52	1724.33
11603410	247195.59	247178.03	-17.56	308.47	4075970.05	4075988.06	18.01	324.40
11603411	310391.98	310365.38	-26.60	707.66	4064470.28	4064509.45	39.16	1533.58
11603402	210047.83	210021.15	-26.69	712.30	4172944.21	4172955.71	11.50	132.20
11603403	308940.11	308924.61	-15.50	240.26	4181405.50	4181404.22	-1.28	1.65
11703420	231418.65	231395.24	-23.41	548.16	4119531.13	4119565.93	34.80	1210.83
11603601	773188.95	773195.20	6.25	39.06	3915802.44	3915800.34	-2.09	4.39
11603602	700441.34	700444.88	3.54	12.50	3838068.48	3838084.00	15.51	240.72
11603603	758114.83	758067.86	-46.97	2206.01	3834016.93	3834056.39	39.46	1556.93
11603604	692252.64	692216.92	-35.73	1276.40	3772473.30	3772504.67	31.37	984.33
11603605	771580.69	771569.86	-10.83	117.31	3781652.35	3781679.18	26.83	720.12
11603517	802575.86	802533.81	-42.05	1768.60	3907193.11	3907198.39	5.28	27.84
11603519	840179.81	840171.04	-8.78	77.00	3904137.58	3904136.72	-0.86	0.74

EarthSat Thematic Mapper Validation – Northeast Asia

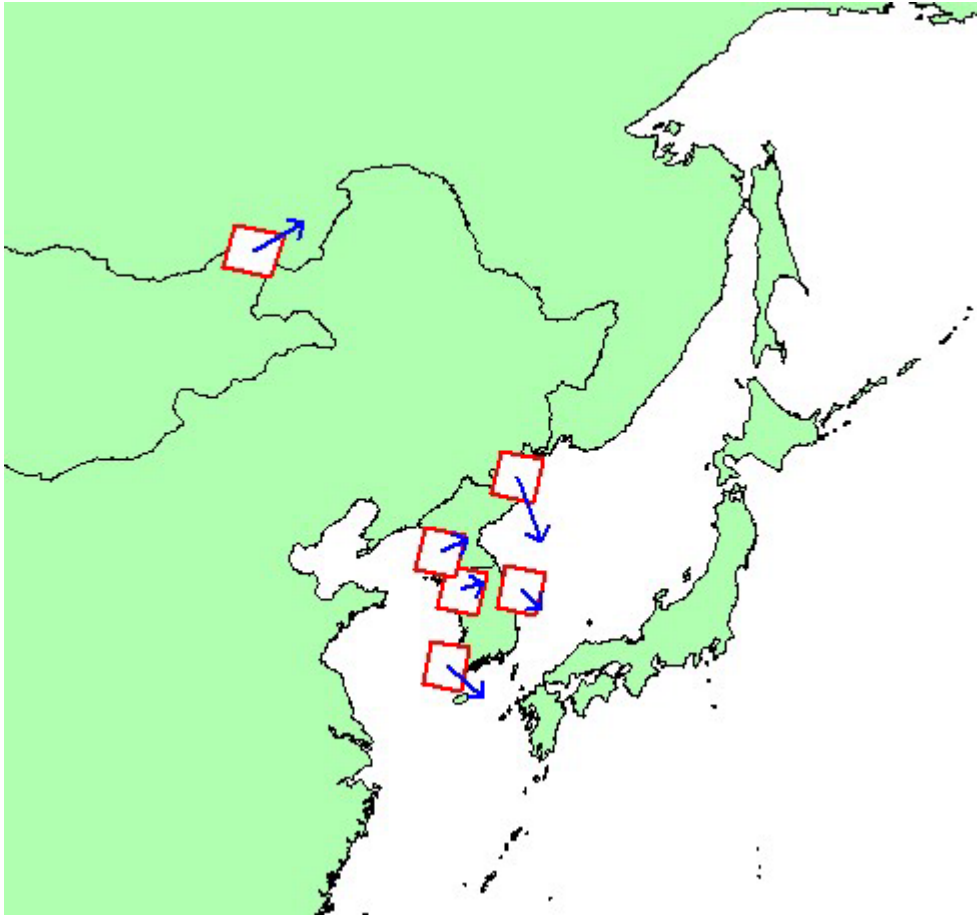
11503602	815630.16	815620.30	-9.86	97.26	3854669.80	3854643.09	-26.71	713.16
11503606	800251.62	800272.10	20.48	419.41	3765847.51	3765831.37	-16.14	260.47
11603310	766123.76	766131.28	7.53	56.69	4241084.84	4241046.89	-37.95	1440.35
11703401	663694.03	663658.69	-35.33	1248.44	4236411.21	4236429.15	17.94	321.70
11703402	714051.03	714060.58	9.55	91.23	4227559.68	4227536.70	-22.98	528.17
11703216	718230.15	718214.57	-15.59	242.91	4393385.13	4393382.73	-2.40	5.75
11703218	802173.89	802169.56	-4.33	18.77	4378084.88	4378100.22	15.34	235.28
11703302	637217.73	637157.66	-60.07	3608.38	4365870.24	4365870.67	0.43	0.18
11703303	701385.56	701407.77	22.21	493.47	4342913.94	4342909.30	-4.63	21.47
11703306	654290.34	654299.23	8.89	79.02	4265124.30	4265148.89	24.59	604.91
11703307	780300.43	780283.73	-16.69	278.72	4215462.08	4215437.80	-24.28	589.52
12602504	338407.00	338390.40	-16.60	275.43	5619119.22	5619072.35	-46.87	2196.61
12602505	418229.49	418225.44	-4.05	16.40	5605613.53	5605622.70	9.16	83.94
12602508	405487.89	405506.61	18.72	350.43	5556489.85	5556477.37	-12.48	155.85
12602507	317879.40	317850.50	-28.91	835.71	5573767.22	5573722.85	-44.38	1969.14
12602510	308170.93	308123.36	-47.56	2262.36	5509366.74	5509410.35	43.61	1901.66
12602512	458318.07	458286.13	-31.94	1020.39	5474326.50	5474345.02	18.52	342.95
12702506	385416.64	385395.23	-21.41	458.22	5587452.10	5587436.56	-15.55	241.68

Sum	29219.69
Average	596.32
RMSE _x	24.42

Sum	32139.99
Average	655.92
RMSE _y	25.61

RMSE Net 35.39 meters.

Appendix C



Northeast Asia Vector Diagram

REPORT DOCUMENTATION PAGE

Form Approved
OMB No. 0704-0188

The public reporting burden for this collection of information is estimated to average 1 hour per response, including the time for reviewing instructions, searching existing data sources, gathering and maintaining the data needed, and completing and reviewing the collection of information. Send comments regarding this burden estimate or any other aspect of this collection of information, including suggestions for reducing this burden, to Department of Defense, Washington Headquarters Services, Directorate for Information Operations and Reports (0704-0188), 1215 Jefferson Davis Highway, Suite 1204, Arlington, VA 22202-4302. Respondents should be aware that notwithstanding any other provision of law, no person shall be subject to any penalty for failing to comply with a collection of information if it does not display a currently valid OMB control number.

PLEASE DO NOT RETURN YOUR FORM TO THE ABOVE ADDRESS.

1. REPORT DATE (DD-MMM-YYYY) 19-11-2003		2. REPORT TYPE		3. DATES COVERED (From - To)	
4. TITLE AND SUBTITLE Results of 17 Independent Geopositional Accuracy Assessments of Earth Satellite Corporation's Geo cover Landsat Thematic Mapper Imagery				5a. CONTRACT NUMBER NAS13-650	
				5b. GRANT NUMBER	
				5c. PROGRAM ELEMENT NUMBER	
6. AUTHOR(S) Charles M. Smith				5d. PROJECT NUMBER	
				5e. TASK NUMBER	
				5f. WORK UNIT NUMBER	
7. PERFORMING ORGANIZATION NAME(S) AND ADDRESS(ES) Lockheed Martin Space Operations				8. PERFORMING ORGANIZATION REPORT NUMBER SE-2003-11-00104-SSC	
9. SPONSORING/MONITORING AGENCY NAME(S) AND ADDRESS(ES) Earth Science Applications Directorate				10. SPONSORING/MONITOR'S ACRONYM(S)	
				11. SPONSORING/MONITORING REPORT NUMBER	
12. DISTRIBUTION/AVAILABILITY STATEMENT Publicly Available STI per form 1676					
13. SUPPLEMENTARY NOTES URL					
14. ABSTRACT This report provides results of an independent assessment of the geopositional accuracy of the Earth Satellite (EarthSat) Corporation's GeoCover. orthorectified Landsat Thematic Mapper (TM) imagery over Northeast Asia. This imagery was purchased through NASA's Earth Science Enterprise (ESE) Scientific Data Purchase (SDP) program.					
15. SUBJECT TERMS					
16. SECURITY CLASSIFICATION OF:			17. LIMITATION OF ABSTRACT	18. NUMBER OF PAGES	19a. NAME OF RESPONSIBLE PERSON
a. REPORT	b. ABSTRACT	c. THIS PAGE			Charles M. Smith
U	U	U	UU	8	19b. TELEPHONE NUMBER (Include area code) (228) 688-2544