

Micro-Ramp Flow Control for Oblique Shock Interactions: Comparisons of Computational and Experimental Data

Stefanie M. Hirt
Glenn Research Center, Cleveland, Ohio

David B. Reich
University of Florida, Gainesville, Florida

Michael B. O'Connor
University of Notre Dame, Notre Dame, Indiana

NASA STI Program . . . in Profile

Since its founding, NASA has been dedicated to the advancement of aeronautics and space science. The NASA Scientific and Technical Information (STI) program plays a key part in helping NASA maintain this important role.

The NASA STI Program operates under the auspices of the Agency Chief Information Officer. It collects, organizes, provides for archiving, and disseminates NASA's STI. The NASA STI program provides access to the NASA Aeronautics and Space Database and its public interface, the NASA Technical Reports Server, thus providing one of the largest collections of aeronautical and space science STI in the world. Results are published in both non-NASA channels and by NASA in the NASA STI Report Series, which includes the following report types:

- **TECHNICAL PUBLICATION.** Reports of completed research or a major significant phase of research that present the results of NASA programs and include extensive data or theoretical analysis. Includes compilations of significant scientific and technical data and information deemed to be of continuing reference value. NASA counterpart of peer-reviewed formal professional papers but has less stringent limitations on manuscript length and extent of graphic presentations.
- **TECHNICAL MEMORANDUM.** Scientific and technical findings that are preliminary or of specialized interest, e.g., quick release reports, working papers, and bibliographies that contain minimal annotation. Does not contain extensive analysis.
- **CONTRACTOR REPORT.** Scientific and technical findings by NASA-sponsored contractors and grantees.

- **CONFERENCE PUBLICATION.** Collected papers from scientific and technical conferences, symposia, seminars, or other meetings sponsored or cosponsored by NASA.
- **SPECIAL PUBLICATION.** Scientific, technical, or historical information from NASA programs, projects, and missions, often concerned with subjects having substantial public interest.
- **TECHNICAL TRANSLATION.** English-language translations of foreign scientific and technical material pertinent to NASA's mission.

Specialized services also include creating custom thesauri, building customized databases, organizing and publishing research results.

For more information about the NASA STI program, see the following:

- Access the NASA STI program home page at <http://www.sti.nasa.gov>
- E-mail your question via the Internet to help@sti.nasa.gov
- Fax your question to the NASA STI Help Desk at 443-757-5803
- Telephone the NASA STI Help Desk at 443-757-5802
- Write to:
NASA Center for AeroSpace Information (CASI)
7115 Standard Drive
Hanover, MD 21076-1320



Micro-Ramp Flow Control for Oblique Shock Interactions: Comparisons of Computational and Experimental Data

Stefanie M. Hirt
Glenn Research Center, Cleveland, Ohio

David B. Reich
University of Florida, Gainesville, Florida

Michael B. O'Connor
University of Notre Dame, Notre Dame, Indiana

Prepared for the
40th Fluid Dynamics Conference and Exhibit
sponsored by the American Institute of Aeronautics and Astronautics
Chicago, Illinois, June 28–July 1, 2010

National Aeronautics and
Space Administration

Glenn Research Center
Cleveland, Ohio 44135

Acknowledgments

The authors would like to thank Dr. Nicholas Georgiadis for his time and advice. This work was supported by the Supersonics project under NASA's Fundamental Aeronautics Program.

This work was sponsored by the Fundamental Aeronautics Program
at the NASA Glenn Research Center.

Level of Review: This material has been technically reviewed by technical management.

Available from

NASA Center for Aerospace Information
7115 Standard Drive
Hanover, MD 21076-1320

National Technical Information Service
5301 Shawnee Road
Alexandria, VA 22312

Available electronically at <http://www.sti.nasa.gov>

Micro-Ramp Flow Control for Oblique Shock Interactions: Comparisons of Computational and Experimental Data

Stefanie M. Hirt
National Aeronautics and Space Administration
Glenn Research Center
Cleveland, Ohio 44135

David B. Reich
University of Florida
Gainesville, Florida 32611

Michael B. O'Connor
University of Notre Dame
Notre Dame, Indiana 46556

Abstract

Computational fluid dynamics was used to study the effectiveness of micro-ramp vortex generators to control oblique shock boundary layer interactions. Simulations were based on experiments previously conducted in the 15- by 15-cm supersonic wind tunnel at the NASA Glenn Research Center. Four micro-ramp geometries were tested at Mach 2.0 varying the height, chord length, and spanwise spacing between micro-ramps. The overall flow field was examined. Additionally, key parameters such as boundary-layer displacement thickness, momentum thickness and incompressible shape factor were also examined. The computational results predicted the effects of the micro-ramps well, including the trends for the impact that the devices had on the shock boundary layer interaction. However, computing the shock boundary layer interaction itself proved to be problematic since the calculations predicted more pronounced adverse effects on the boundary layer due to the shock than were seen in the experiment.

Nomenclature

A_p	micro-ramp half angle
c	micro-ramp chord length
H	incompressible shape factor
h	micro-ramp height
M	Mach number
s	micro-ramp spacing
u	velocity component in the flow direction
x	coordinate in the flow direction
y^+	distance from wall normalized by shear length scale
z	coordinate in the spanwise direction
α	shock generator angle of attack
δ^*	compressible boundary-layer displacement thickness
θ	compressible boundary-layer momentum thickness

Introduction

In supersonic inlets, oblique shocks are used to compress and decelerate the airflow entering the engine. These shocks interact with the boundary layer and increase its thickness, resulting in large energy

losses, decreased system performance, and potentially separated flow. The traditional method to control shock boundary layer interactions (SBLIs) is bleed, which removes low-momentum flow from the boundary layer using suction through a porous surface on the inlet wall. Although bleed helps reduce the characteristic effects on the boundary layer, bleed systems are heavy and complex, decrease mass flow to the engine and introduce additional drag. Together these negative consequences of bleed lead to lower system efficiencies (Refs. 1 and 2).

Many different types of vortex generators (VGs) have been proposed and investigated as possible replacements or supplements to bleed systems (Ref. 3). VGs are devices that redistribute the energy through the boundary layer. The velocity near the wall is increased to help maintain boundary-layer health through the SBLI at the cost of a velocity defect in the outer region of the boundary layer. They are attractive due to their low weight and mechanical simplicity, though they do impose a drag penalty on the system.

Micro-ramps are one such type of VG flow control device. However, unlike typical vane-type vortex generators which have heights matching the boundary-layer thickness, micro-ramps have heights ranging from 25 to 40 percent of the boundary-layer thickness (Ref. 4). Micro-ramp style VGs have gained interest due to their mechanical robustness.

Experiments studying the effectiveness of micro-ramp flow control were performed in the 15- by 15-cm supersonic wind tunnel at the NASA Glenn Research Center (GRC) by Hirt and Anderson (Ref. 5). Fifteen micro-ramp configurations of varying height, chord length, and spanwise spacing between micro-ramps were investigated. A photograph showing three of the configurations from the experiment is shown in Figure 1. The 15 configurations represented a Design of Experiments (DOE) central composite design. An oblique shock was created using a shock generator plate at 8.5° angle of attack. Micro-ramps were placed upstream of where the shock reflects off of the tunnel floor. Boundary-layer profiles and properties and Mach number contours were examined for various micro-ramp configurations.

This paper presents results of a computational fluid dynamics (CFD) study of micro-ramp effects on an oblique SBLI based on the experiments of Hirt and Anderson (Ref. 5). In this effort, the baseline cases and four cases comprising the main effects design—which is embedded in the complete central composite design from the experiment—were simulated in order to determine the ability of Reynolds-averaged Navier-Stokes (RANS)-based computation methods to predict the effects of micro-ramps. This paper discusses the CFD results and compares them with the experimental data.

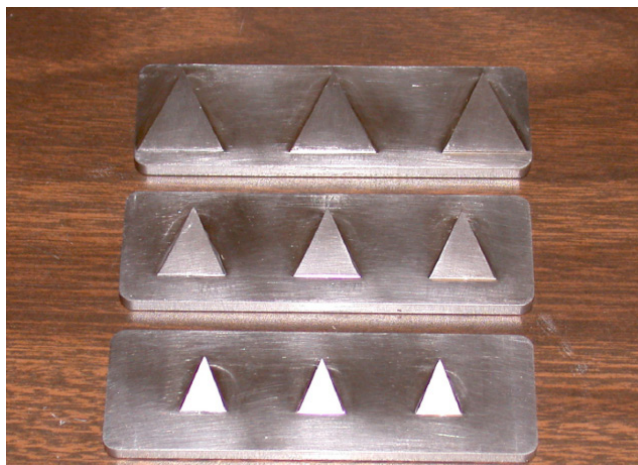


Figure 1.—Picture of three micro-ramp inserts from the experiment in the 15- by 15-cm supersonic wind tunnel.

Modeling

Computational Methodology

Simulations were conducted using Wind-US version 2.0 (Ref. 6), a compressible 3-D RANS flow solver for multi-zone structured and unstructured grids. Wind-US includes several turbulence models, of which the Menter Shear Stress Transport (SST) model was chosen for this study. The SST turbulence model was chosen for its accuracy in wall boundary layers (Ref. 7). Structured grids were created using Pointwise Gridgen. A viscous grid was created using a wall grid spacing of 7.34×10^{-4} cm based on an average y^+ value of 2.0. A hyperbolic tangent distribution was used to distribute the grid points across the computational flow domain. A symmetry plane along the centerline of the tunnel was used to reduce the number of grid points by half, greatly reducing computational time. The grid was sequenced to reduce convergence time: the solution was first computed on a grid using every fourth point in each direction (coarse grid); then the solution was computed at every other point (medium grid); and finally the solution was computed using all the grid points (fine grid). Convergence was determined by examining differences in the parameters of interest—compressible displacement thickness, compressible momentum thickness, and incompressible shape factor—at the primary measurement plane, $x = 4$ cm. If the values changed less than 0.5 percent over 2500 iterations, the solution was deemed converged. Boundary layer velocities, skin friction coefficient, and vorticity profiles were also monitored as a qualitative check on convergence.

Configurations

The seven configurations modeled for this effort are divided into two groups: three baseline cases and four complete cases with micro-ramps and an oblique shock. The three baseline cases were modeled to match the experimental baseline configurations. The first baseline configuration was the empty 15- by 15-cm wind tunnel with a Mach 2.0 nozzle, which was simulated to verify all computational parameters were set up correctly (all subsequent simulations were also at $M = 2.0$). This grid contained 2.9 million grid points. For the second baseline configuration an oblique shock generator plate was added to the tunnel grid. The grid with the shock generator contained 5.9 million grid points. The final baseline configuration modeled the micro-ramps, but no shock generator, and contained 4.0 million grid points.

After the computations of the baseline cases were completed successfully, grids were built for the four micro-ramp with shock cases. The micro-ramp/shock generator grids contained about 15 million grid points at the fine grid level. The four micro-ramp configurations tested are shown in Table 1 with the referenced parameters from the table shown in Figure 2. The micro-ramp half angle, A_p , was 24° for all configurations. Micro-ramp centerlines ($c/2$) were placed at $x = -13$ cm, with the inviscid shock impingement location specified as $x = 0$ cm as shown in Figure 3. The four micro-ramp configurations tested were the main effects configurations from the designed experiment of Hirt and Anderson (Ref. 5). The main effects design was chosen due to the ability to study many variables with a limited number of test cases since it represents the sparsest DOE design.

TABLE 1.—TEST MATRIX FOR MICRO-RAMP CONFIGURATIONS.

Configuration	h , mm	c , mm	s , mm
1	3	24	35
2	3	12	25
3	5	12	35
4	5	24	25

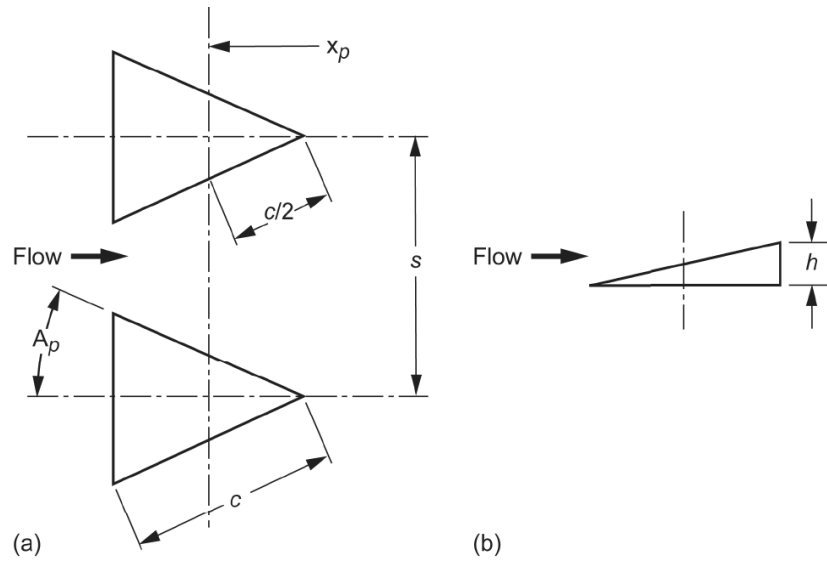


Figure 2.—Micro-ramp configuration schematic.

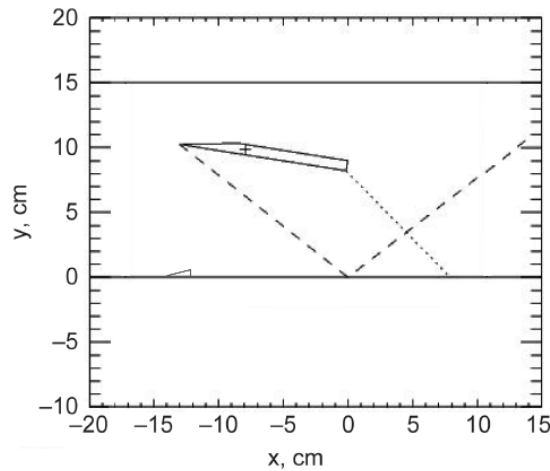


Figure 3.—Tunnel layout. Dotted lines represent shocks and expansions.

Post Processing

The data presented a challenge when computing boundary-layer parameters. There were density variations in the tunnel due to imperfections in the expansion from the nozzle, presenting a more complex boundary layer analysis. But in the cases with a shock, density had to be taken into account since the region downstream of the shock had no clear boundary layer edge when looking at u -velocity alone. For consistency, the boundary layer edge was defined as the location where either the streamwise velocity or streamwise momentum reached a maximum.

Since the intent of the micro-ramps is to improve the boundary layer, standard boundary layer properties were examined to determine their effectiveness. Specifically, the compressible displacement thickness, compressible momentum thickness, and incompressible shape factor are considered in this paper. The displacement and momentum thicknesses give a measure of the flow blockage added by the devices, while the shape factor measures the boundary layer health.

The incompressible shape factor, H , was chosen primarily because it has been used to quantify improvements in boundary layer health for bleed flows (Ref. 1). The incompressible shape factor is typically used instead of the compressible form even in compressible flow because it is independent of Mach number. A flat plate turbulent boundary layer has an incompressible shape factor of approximately 1.3 at all Mach numbers, and a boundary layer near separation has an incompressible shape factor of about 2.7 (Ref. 8).

Results

Baseline Cases

Empty Tunnel

The u -velocity contours of the empty tunnel baseline simulation are shown in Figure 4. The maximum velocity in the core flow is 519 m/s, which given the speed of sound of 258 m/s gives the expected Mach number of 2.0. Figure 5 shows a comparison of boundary-layer u -velocity profiles for the three grid sequences and the experimental data. All of the cases predict the correct velocity in the freestream. With grid refinement, the CFD solutions closely match the experiment throughout the boundary layer. Only subtle changes are observed between the medium and fine grid solutions, indicating grid convergence was obtained. Table 2 and Figure 6(a) and (b) show the baseline boundary-layer integral parameters compared with experiment. As expected, for the case with a simple converging-diverging nozzle and flat plate boundary layer, the agreement of the computed boundary layer parameters and growth rate to the measured values was very good.

TABLE 2.—SPAN-AVERAGED COMPRESSIBLE DISPLACEMENT THICKNESS, COMPRESSIBLE MOMENTUM THICKNESS AND INCOMPRESSIBLE SHAPE FACTOR FOR THE BASELINE CASES

		Computational results			Experimental results		
		δ^* , cm	θ , cm	H	δ^* , cm	θ , cm	H
$x = -13$ cm	Empty tunnel	0.301	0.101	1.30	0.283	0.100	1.32
$x = -8$ cm	Empty tunnel	0.321	0.104	1.30	0.292	0.104	1.31
	Micro-ramps*	0.337	0.110	1.30	0.291	0.117	1.34
$x = -4$ cm	Empty tunnel	0.324	0.112	1.31	0.301	0.106	1.32
	Micro-ramps	0.347	0.111	1.29	0.324	0.108	1.30
$x = 0$ cm	Empty tunnel	0.333	0.115	1.30	0.342	0.116	1.30
	Micro-ramps	0.348	0.118	1.30	0.347	0.120	1.30
$x = 4$ cm	Empty tunnel	0.347	0.115	1.30	0.326	0.118	1.32
	Micro-ramps	0.356	0.118	1.29	0.337	0.124	1.32
	Shock**	0.495	0.170	1.81	0.516	0.190	1.75

*Micro-ramp configuration 2 with no oblique shock.

**For the computational case the shock generator angle was 6.5° . For the experimental case the shock generator angle was 8.5° .

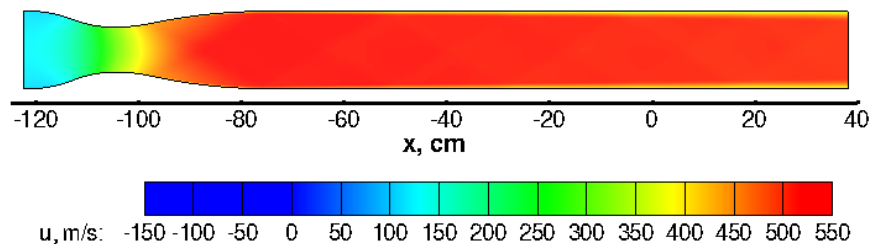


Figure 4.—Contours of u -velocity for the empty 15-by 15-cm supersonic wind tunnel configuration at $z = 0$ cm.

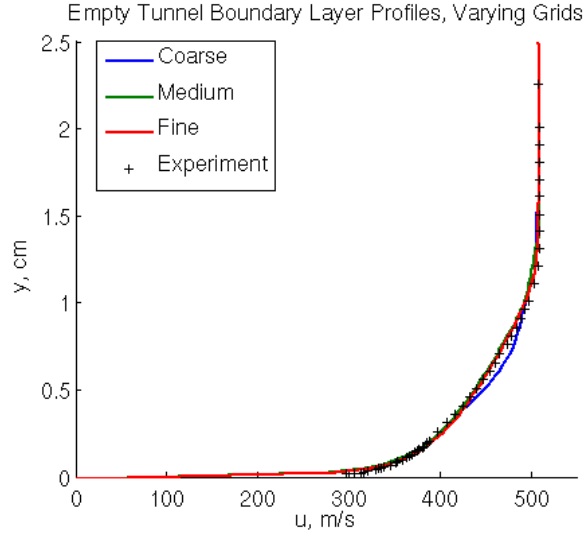


Figure 5.—Grid sensitivity and experimental data for empty tunnel.

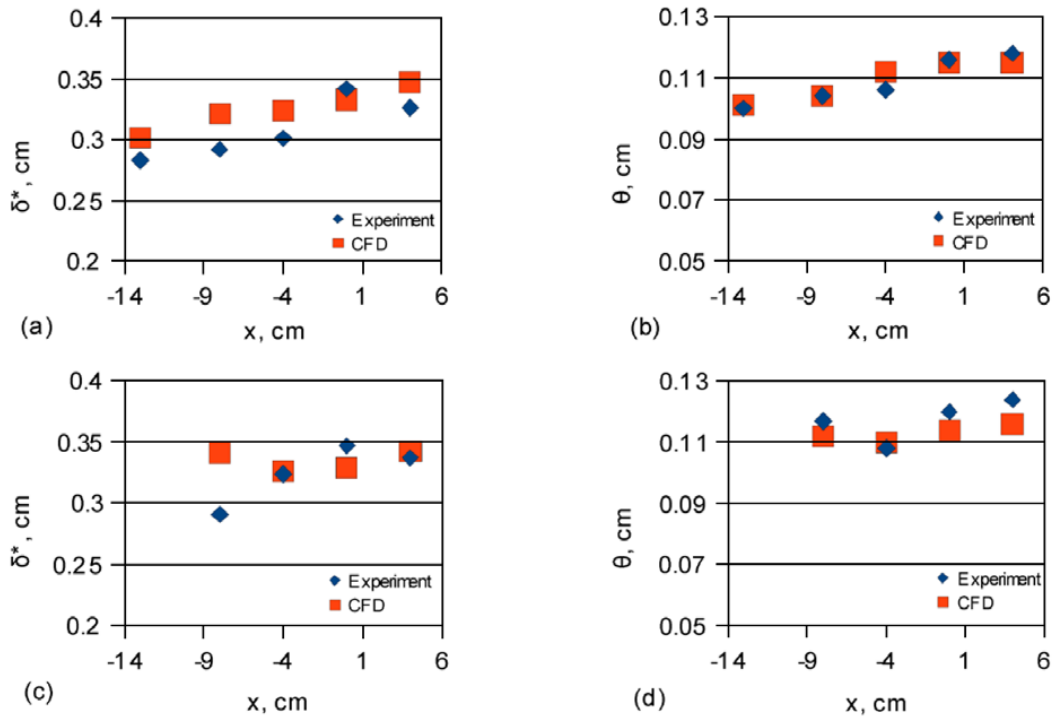


Figure 6.—(a) Empty tunnel compressible displacement thickness, (b) empty tunnel compressible momentum thickness, (c) micro-ramps only compressible displacement thickness and (d) micro-ramps only compressible momentum thickness along the streamwise direction.

Shock Only: Viscous Sidewalls

Attempts to run simulations for the 8.5° shock generator angle were unsuccessful in maintaining a supersonic flow within the vicinity of the shock generator. The pressure rise from the shock generator would move upstream of the shock generator, and the tunnel flow would unstart as in a supersonic inlet.

This was caused by boundary layer thickening along the tunnel floor coupled with an even stronger adverse flow response along the sidewall. Corrective measures such as starting the calculations with a higher inflow pressure (to increase the Reynolds number and reduce the effective blockage) always reverted to the same unstarted flow state when the pressures were reduced to the experimental conditions. In addition to the SST turbulence model this case was run using the Spalart-Allmaras (SA) turbulence model, which tends to predict weaker SBLIs. However, no significant improvement was noted when the SA turbulence model was used. In subsequent attempts, the shock generator angle was first reduced to 7.5° , which still exhibited the undesirable unstart behavior, and then ultimately reduced to 6.5° , which eliminated the unstart characteristics, yet continued to produce a pressure rise upstream of the leading edge of the shock generator plate.

Even for the 6.5° shock generator case, when the micro-ramps were introduced, the effect of the sidewall boundary layer thickening interacted with the wake of the micro-ramps nearest the sidewall causing the flow to unstart. As a result, a further deviation from the exact experimental configuration was made to remove the viscous effect of the sidewall boundary layers to isolate the effects of the micro-ramps on the SBLI. This was accomplished by changing the sidewall boundary condition from viscous wall to inviscid wall. While no longer accurately representing the experimental configuration, comparisons between CFD and experiment were restricted to a small region (17 to 23 percent of the test section width depending on the micro-ramp spacing) near the center of the tunnel where, in the experiment, the flow was observed to be free of tunnel sidewall effects.

The computational grid and contours of u -velocity are shown in Figure 7 for the tunnel with shock generator installed at 6.5° angle of attack. Figure 8 illustrates the interaction between the sidewall boundary layer and the tunnel floor boundary layer due to the shock. Measurements were not taken near the sidewalls in the experiment, but this sidewall boundary layer thickening was expected and has been observed in similar experiments.

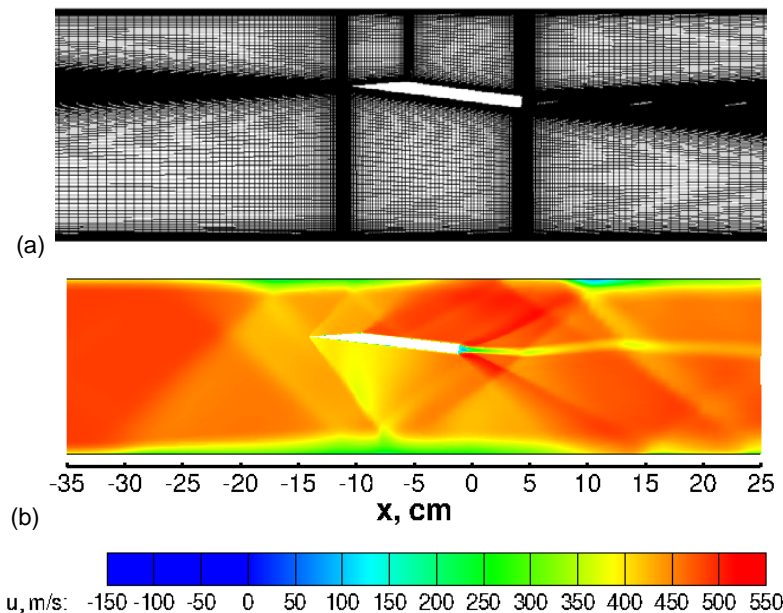


Figure 7.—(a) Grid and (b) u -velocity contours for tunnel with shock generator plate at 6.5° with viscous sidewalls at $z = 0$ cm.

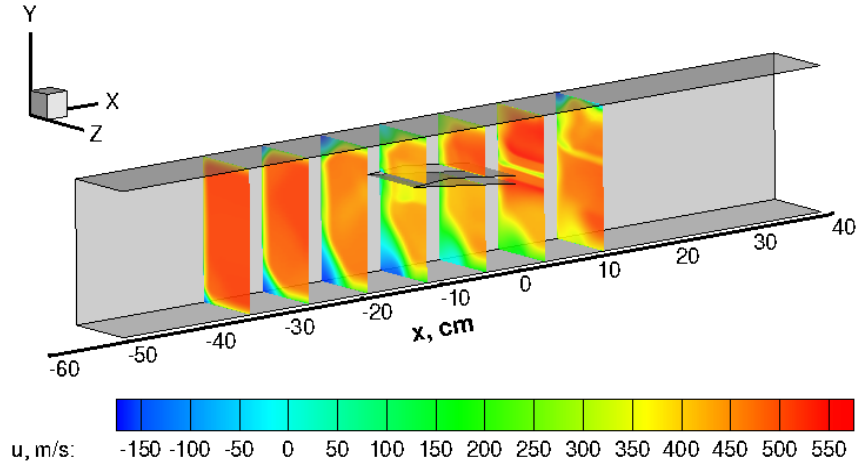


Figure 8.—Contours of u -velocity at various streamwise locations for shock-only case with viscous sidewalls. Symmetry plane normal to the z -direction.

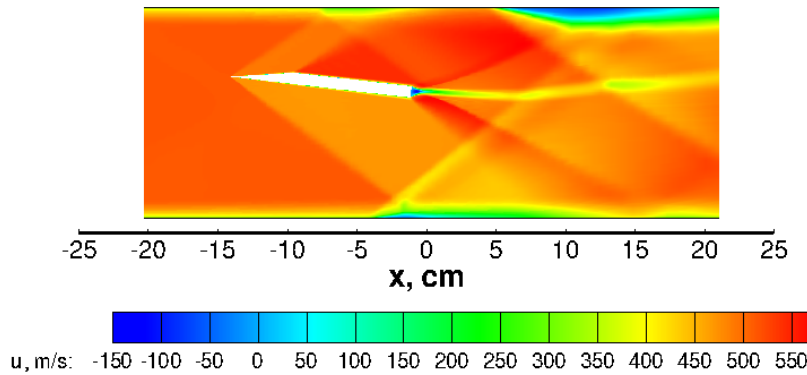


Figure 9.—Contours of u -velocity for the shock-only case with inviscid tunnel sidewalls at $z = 0$ cm.

Shock Only: Inviscid Sidewalls

In order to mitigate the viscous wall issue and better observe the micro-ramp effectiveness, the tunnel sidewall boundary condition was changed from viscous wall to inviscid wall. All cases were simulated with this modified boundary condition, including the baseline cases. The tunnel floor and ceiling remained viscous to preserve the SBLI of interest. Figure 9 shows the shock-only baseline case with inviscid sidewall. It is apparent that the excessive sidewall boundary layer thickening is eliminated and no shocks are present upstream of the shock generator plate.

From Figure 9 it is apparent that the boundary layer is significantly thickened in the region where the oblique shock impacts the tunnel wall. This illustrates the SBLI that is to be mitigated by the micro-ramps.

Micro-Ramps Only: Inviscid Sidewalls

This simulation showed the vortices generated by micro-ramp configuration 2 unaffected by any shocks. The grid in the vicinity of the micro-ramps is shown in Figure 10. Figure 11 illustrates the vortices formed by flow over the micro-ramps. As shown in Figure 11, vorticity magnitude is highest near the trailing-edge tip of the micro-ramps and decays downstream. Previous work has shown that vorticity

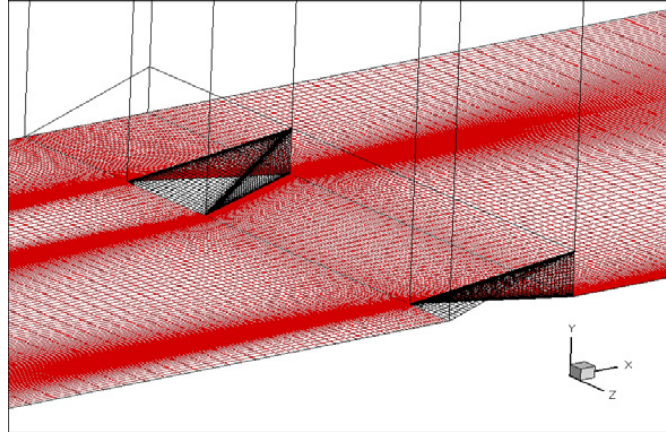


Figure 10.—Grid in the vicinity of the micro-ramps. Flow is from left to right. Symmetry plane normal to z-direction.

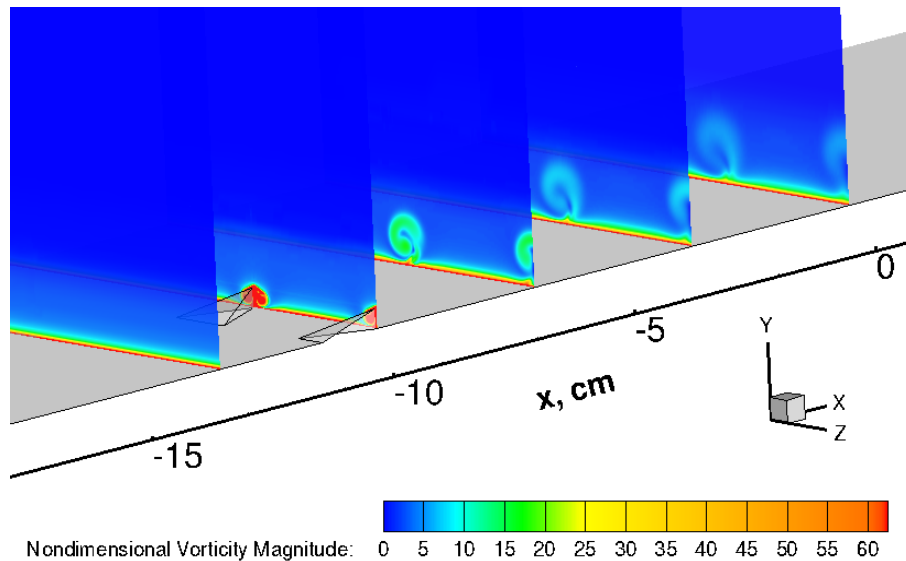


Figure 11.—Vorticity magnitude contours at various streamwise locations. Flow is from left to right. Symmetry plane normal to z-direction.

decay occurs at a higher rate in RANS-based CFD than is measured experimentally (Refs. 9 and 10). As shown in Table 2, the micro-ramps tend to increase compressible displacement thickness compared to the empty tunnel cases at the corresponding locations, but have little effect on incompressible shape factor when no shock is present. Figure 6 (c) and (d) show the micro-ramp only baseline CFD compared to the experimental data. Agreement is generally good expect for the first station downstream of the micro-ramps at $x = -8$ cm. Because this station is so near the micro-ramps, it may be difficult to obtain good measurements in the experiment and calculate good velocities in the computational results.

Micro-Ramps With Shock

The inviscid wall boundary condition was applied to the tunnel sidewalls for all CFD simulations of the tunnel with the shock generator and micro-ramps. The viscous wall boundary condition continued to be applied to the upper and lower walls of the tunnel, as the SBLI on these surfaces was of primary interest in this study. Figures 12 and 13 show u -velocity contours of the four micro-ramp/shock configurations. Local separation occurs in the wake region of each micro-ramp, however it is unclear from contour plots alone whether flow is improved in the spanwise region between the micro-ramps.

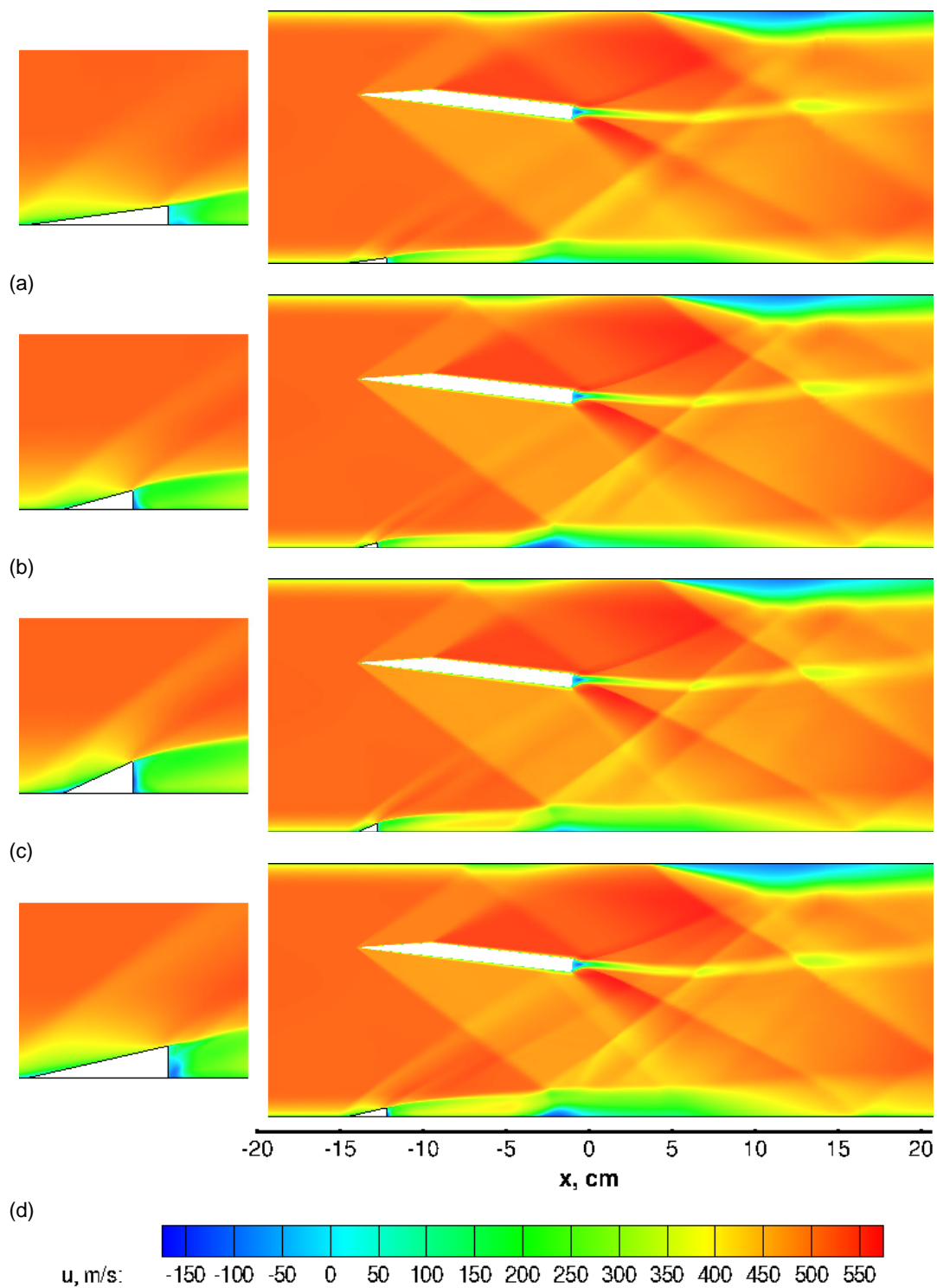


Figure 12.—Contours of u -velocity at the tunnel centerline ($z = 0$) for the four micro-ramp configurations: (a) Configuration 1, (b) Configuration 2, (c) Configuration 3, and (d) Configuration 4.

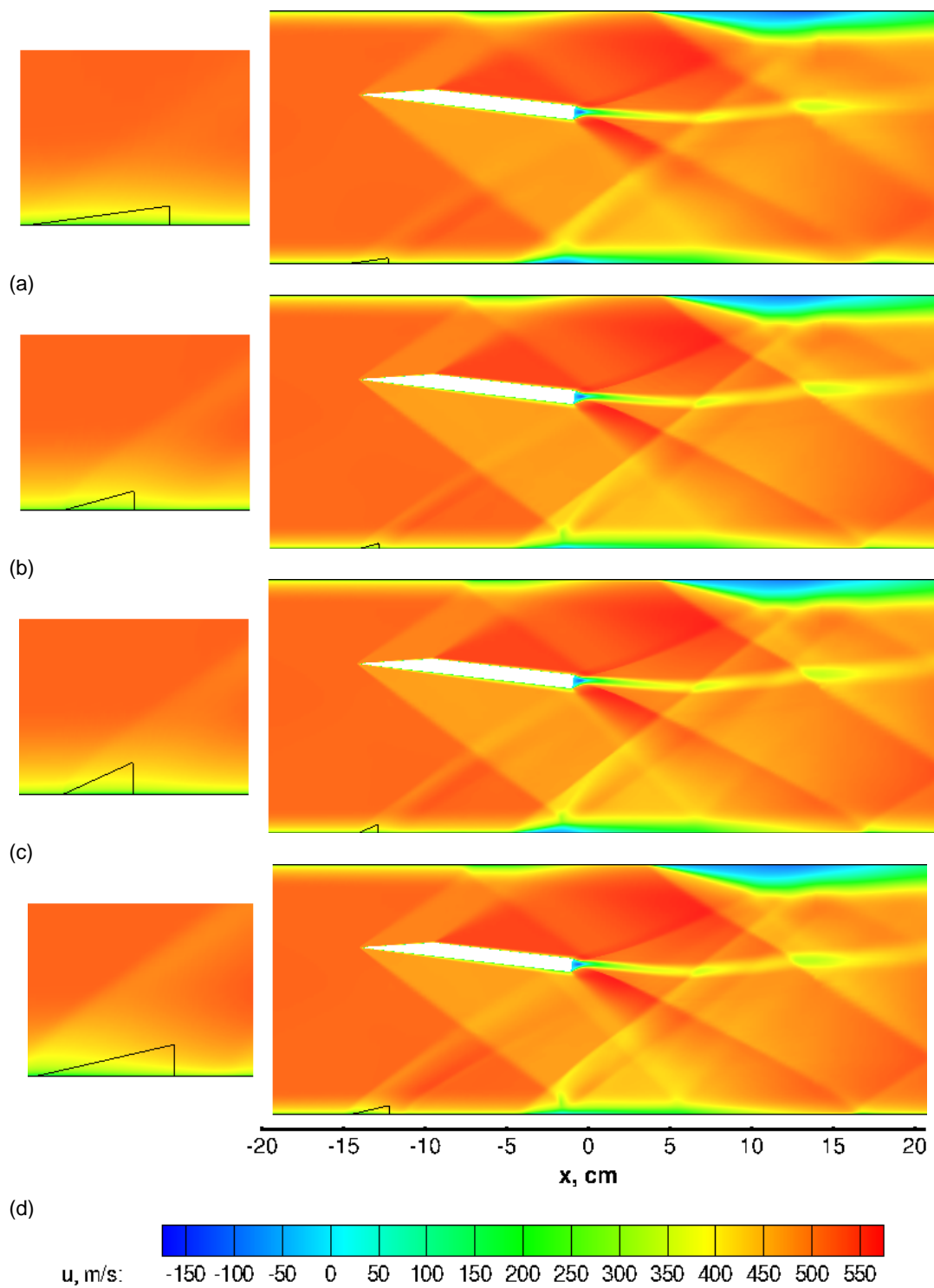


Figure 13.—Contours of u -velocity halfway between the micro-ramps ($z = s/2$) for the four micro-ramp configurations: (a) Configuration 1, (b) Configuration 2, (c) Configuration 3, and (d) Configuration 4.

Spanwise averaging of boundary-layer parameters was used to obtain a qualitative measure of micro-ramp effectiveness. Table 3 shows compressible displacement thickness, compressible momentum thickness, and incompressible shape factor for all four micro-ramp with shock configurations as well as the shock only baseline case for comparison. Compared to the shock-only case, displacement thickness and momentum thickness increased with the addition of micro-ramps. The incompressible shape factor decreased for three of the four micro-ramp configurations.

TABLE 3.—SPAN-AVERAGED COMPRESSIBLE DISPLACEMENT THICKNESS, COMPRESSIBLE MOMENTUM THICKNESS AND INCOMPRESSIBLE SHAPE FACTOR FOR MICRO-RAMPS WITH SHOCK CASES. $x = 4$ cm

Configuration	δ^* , cm	θ , cm	H
Shock	0.495	0.170	1.81
1	0.520	0.183	1.75
2	0.541	0.184	1.81
3	0.546	0.192	1.77
4	0.514	0.194	1.66

Data were available from the 15- by 15-cm SWT test for one micro-ramp configuration with a shock generator angle of 6.5° . and was modeled as configuration 4 in the current study. The CFD and experimental data are presented in Table 4. Also presented are the experimental results for that configuration at 7.5° and 8.5° shock generator angle. Again the CFD predicts an effect of the shock interaction stronger than that observed in the experiment in terms of increased boundary-layer parameter thicknesses and increased shape factor. In fact, the computed boundary-layer parameters are closest to the experimental data at 8.5° . The experimental data seems to show a distinct break where the data at 6.5° and 7.5° are quite similar with a slight increase in the displacement and momentum thicknesses, δ^* and θ , without a change in shape factor, H , but the values of all three parameters for the 8.5° case are significantly increased. It is possible that this is indicative of the flow being attached for the two small shock generator angles and separated at the highest angle. If this is the case, then it seems that the CFD is predicting an earlier separation limit in terms of shock strength than is evidenced in the experimental data.

TABLE 4.—SPAN-AVERAGED COMPRESSIBLE DISPLACEMENT THICKNESS, COMPRESSIBLE MOMENTUM THICKNESS AND INCOMPRESSIBLE SHAPE FACTOR FOR MICRO-RAMPS WITH SHOCK CONFIGURATION 4 (CFD) COMPARED TO EXPERIMENTAL DATA (SWT) FOR THE SAME MICRO-RAMP CONFIGURATION AT VARIOUS SHOCK GENERATOR ANGLES. $x = 4$ cm

α , degrees		δ^* , cm	θ , cm	H
6.5	CFD	0.514	0.194	1.66
6.5	SWT	0.400	0.129	1.29
7.5	SWT	0.445	0.140	1.29
8.5	SWT	0.556	0.226	1.62

To compare the trends between micro-ramp configurations, Figure 14 shows the span-averaged displacement and momentum thicknesses, δ^* and θ , and shape factor, H , for the CFD compared to experimental data. Experimental data is shown in blue for all four micro-ramp configurations at a shock generator angle of 8.5° and in green for configuration 4 with a shock generator angle of 6.5° . The computational results are shown in red with squares marking the four configurations and the horizontal line representing the value for the 6.5° shock-only baseline. Despite the simulations not exactly modeling

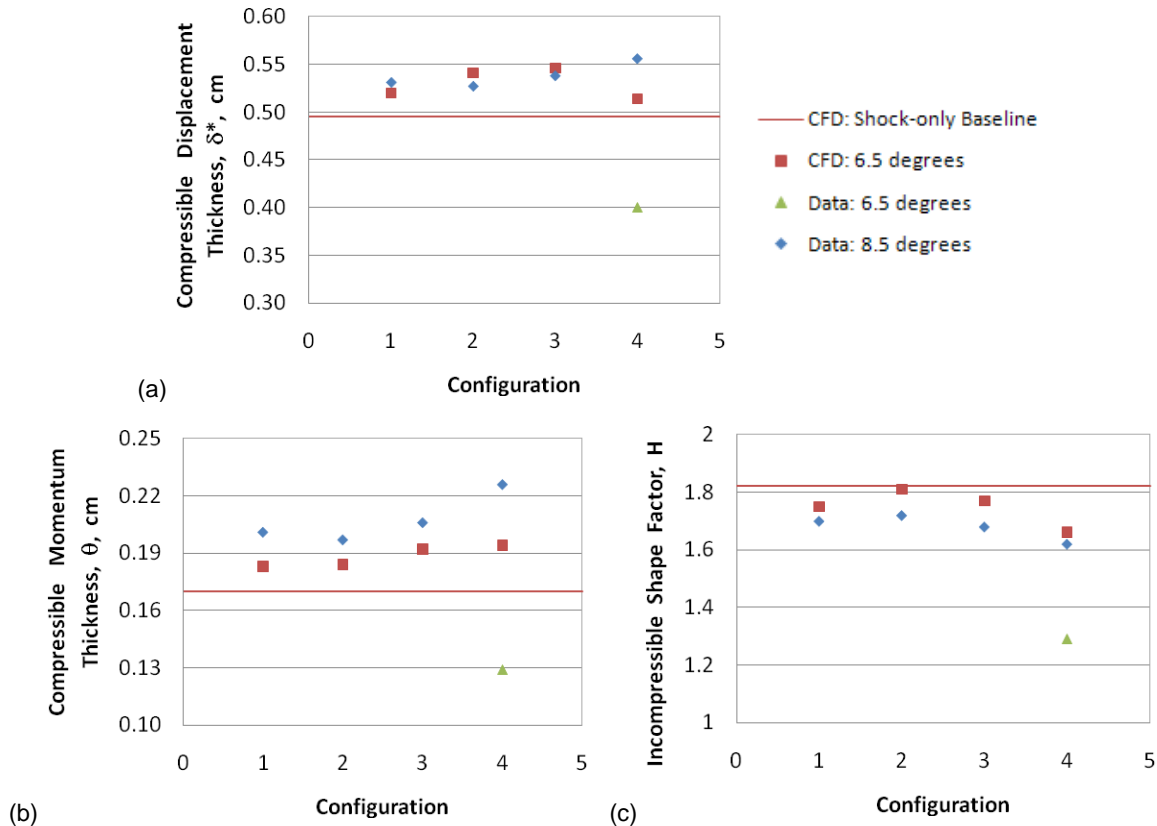


Figure 14.—Plots showing comparisons of span-averaged boundary-layer parameters at $x = 4$ cm by configuration numbers from Table 1 along the x-axis: (a) compressible displacement thickness, δ^* , (b) compressible momentum thickness, θ , and (c) incompressible shape factor, H .

the experimental configuration, the flow affected by the micro-ramps away from the sidewalls was successfully simulated and captured the trends of the impact of the ramps on the shock system, especially in terms of the shape factor. It is important to mention, however, that the CFD predictions represent a 6.5° shock generator angle, while the experimental data was obtained with a shock generator angle of 8.5° . We would expect that the CFD prediction for the 6.5° case should match the experimental data for the same angle. However, we observe that the values more closely match those for the 8.5° case, suggesting that the CFD predicts a greater adverse response to the SBLI than seen in the experiment.

Conclusions

The primary challenge encountered in the present study was that the CFD solutions showed limitations in replicating experimental results with the oblique shock, especially when the sidewalls were modeled as viscous walls. Across the board, the CFD predicted a greater adverse response to the shock interaction than was observed in the experiment. This was seen as a tunnel unstart with a plate angle of 8.5° and also as a larger boundary-layer shape factor with a plate angle of 6.5° . Even when the sidewalls were modeled as inviscid walls, the response of the boundary layer to the shock interaction is not captured well by currently available RANS-based CFD.

Although there were difficulties modeling the exact experimental configuration, the modified simulations with inviscid sidewalls are a useful complement to the experimental data. The effect of the micro-ramps on the shock showed the same trends as for the experiment based on the limited data available for the 6.5° case. The addition of micro-ramps to a SBLI reduced the incompressible shape factor in three of the four configurations. However it is still unclear whether the micro-ramps are

beneficial since both the displacement thickness and momentum thickness increased with the addition of micro-ramps. This trade-off would need to be considered relative to a specific inlet system.

For the cases without a shock present, the CFD agreed reasonably well with the experiment. This was even true for the case with only the micro-ramps even though there are some questions as to whether a RANS solver is appropriate to use with vortical flows. Indeed, the RANS approximation needs to be more closely examined in its application to the study of vortical flow, micro-ramps in particular. All RANS models respond to vorticity by increasing turbulent viscosity, in turn decreasing vorticity, possibly too fast (vorticity is not preserved far enough downstream) to represent a real physical flow. Other approaches such as large-eddy simulation or direct numerical simulation should be investigated and may give more informative results.

References

1. Fukuda, M. K., Hingst, W. G., Reshotko, E., "Control of Shock Wave-Boundary Layer Interactions by Bleed in Supersonic Mixed Compression Inlets," NASA CR2595, 1975.
2. Young, D. D., Jenkins, S. A., "An Investigation of Active Flowfield Control for Inlet Shock/Boundary Layer Interaction," AIAA Paper 2005-4020, July 2005.
3. Lin, J. C., "Review of Research on Low-Profile Vortex Generators to Control Boundary-Layer Separation," *Progress in Aerospace Sciences*, Vol. 38, 2002, pp. 389-420.
4. Anderson, B.H., Tinapple, J., Surber, L., "Optimal Control of Shock Wave Turbulent Boundary Layer Interactions Using Micro-Array Actuation," AIAA Paper 2006-3197, June 2006.
5. Hirt, S.M., Anderson, B.H., "Experimental Investigation of the Application of Microramp Flow Control to an Oblique Shock Interaction," AIAA Paper 2009-919, Jan 2009.
6. Towne, C. E., "Wind-US Users Guide, Version 2.0," NASA/TM—2009-215804, 2009.
7. Georgiadis, N.J., Yoder, D.A., Towne, C.S., Engblom, W.A., Bhagwandin, V.A., Power, G.D., Lankford, D.W., Nelson, C.C., "Wind-US Code Physical Modeling Improvements to Complement Hypersonic Testing and Evaluation," AIAA Paper 2009-193, Jan 2009.
8. Castillo, L., Wang, X., George, W. K., "Separation Criterion for Turbulent Boundary Layers Via Similarity Analysis", *Journal of Fluids Engineering*, Vol. 126, 2004, pp 297-304.
9. Dippold, V., "CFD Analyses and Jet-Noise Predictions of Chevron Nozzles With Vortex Stabilization," AIAA Paper 2008-37, Jan 2008.
10. Dudek, J. C., "Modeling Vortex Generators in the Wind-US Code," AIAA Paper 2010-32, Jan 2010.

REPORT DOCUMENTATION PAGE			Form Approved OMB No. 0704-0188		
<p>The public reporting burden for this collection of information is estimated to average 1 hour per response, including the time for reviewing instructions, searching existing data sources, gathering and maintaining the data needed, and completing and reviewing the collection of information. Send comments regarding this burden estimate or any other aspect of this collection of information, including suggestions for reducing this burden, to Department of Defense, Washington Headquarters Services, Directorate for Information Operations and Reports (0704-0188), 1215 Jefferson Davis Highway, Suite 1204, Arlington, VA 22202-4302. Respondents should be aware that notwithstanding any other provision of law, no person shall be subject to any penalty for failing to comply with a collection of information if it does not display a currently valid OMB control number.</p> <p>PLEASE DO NOT RETURN YOUR FORM TO THE ABOVE ADDRESS.</p>					
1. REPORT DATE (DD-MM-YYYY) 01-08-2012		2. REPORT TYPE Technical Memorandum		3. DATES COVERED (From - To)	
4. TITLE AND SUBTITLE Micro-Ramp Flow Control for Oblique Shock Interactions: Comparisons of Computational and Experimental Data			5a. CONTRACT NUMBER		
			5b. GRANT NUMBER		
			5c. PROGRAM ELEMENT NUMBER		
6. AUTHOR(S) Hirt, Stefanie, M.; Reich, David, B.; O'Connor, Michael, B.			5d. PROJECT NUMBER		
			5e. TASK NUMBER		
			5f. WORK UNIT NUMBER WBS 984754.02.07.03.13.02		
7. PERFORMING ORGANIZATION NAME(S) AND ADDRESS(ES) National Aeronautics and Space Administration John H. Glenn Research Center at Lewis Field Cleveland, Ohio 44135-3191			8. PERFORMING ORGANIZATION REPORT NUMBER E-17976-1		
9. SPONSORING/MONITORING AGENCY NAME(S) AND ADDRESS(ES) National Aeronautics and Space Administration Washington, DC 20546-0001			10. SPONSORING/MONITOR'S ACRONYM(S) NASA		
			11. SPONSORING/MONITORING REPORT NUMBER NASA/TM-2012-217242		
12. DISTRIBUTION/AVAILABILITY STATEMENT Unclassified-Unlimited Subject Category: 02 Available electronically at http://www.sti.nasa.gov This publication is available from the NASA Center for AeroSpace Information, 443-757-5802					
13. SUPPLEMENTARY NOTES					
14. ABSTRACT Computational fluid dynamics was used to study the effectiveness of micro-ramp vortex generators to control oblique shock boundary layer interactions. Simulations were based on experiments previously conducted in the 15- by 15-cm supersonic wind tunnel at the NASA Glenn Research Center. Four micro-ramp geometries were tested at Mach 2.0 varying the height, chord length, and spanwise spacing between micro-ramps. The overall flow field was examined. Additionally, key parameters such as boundary-layer displacement thickness, momentum thickness and incompressible shape factor were also examined. The computational results predicted the effects of the micro-ramps well, including the trends for the impact that the devices had on the shock boundary layer interaction. However, computing the shock boundary layer interaction itself proved to be problematic since the calculations predicted more pronounced adverse effects on the boundary layer due to the shock than were seen in the experiment.					
15. SUBJECT TERMS Vortex generators; Oblique shock waves; Computational fluid dynamics					
16. SECURITY CLASSIFICATION OF:			17. LIMITATION OF ABSTRACT	18. NUMBER OF PAGES	19a. NAME OF RESPONSIBLE PERSON
a. REPORT U	b. ABSTRACT U	c. THIS PAGE U	UU	22	STI Help Desk (email:help@sti.nasa.gov)
					19b. TELEPHONE NUMBER (include area code) 443-757-5802

