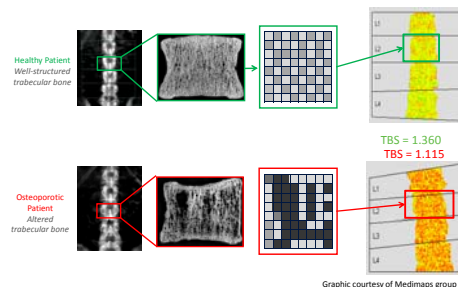


TBS (Trabecular Bone Score) Expands Understanding of Spaceflight Effects on the Lumbar Spine of Long-Duration Astronauts

Scott. A. Smith¹, Nelson Watts², Didier Hans³, Adrian LeBlanc⁴, Elisabeth Spector¹, Harlan Evans¹, Lisa King¹, Jean Sibonga⁵; ¹Wyle, Houston TX, ²Mercy Hospital, Cincinnati, Ohio, ³Lausanne University Hospital, Switzerland, ⁴USRA, Houston, TX, ⁵NASA JSC, Houston TX.

Background: Bone loss due to long-duration spaceflight has been characterized by both DXA and QCT serial scans. It is unclear if these spaceflight-induced changes in bone mineral density (BMD) and structure result in increased fracture incidence. NASA astronauts currently fly 5 to 6-month missions on the International Space Station (ISS) and at least one 12-month mission is planned. While NASA has measured areal BMD (by DXA) and volumetric BMD (by QCT) and has estimated hip strength (by finite element models of QCT data), no method has yet been used to examine bone micro-architecture from lumbar spine (LS). DXA scans are routinely performed pre- and postflight on all ISS astronauts to follow BMD changes associated with spaceflight. Trabecular Bone Score (TBS) is a relatively new method that measures grey-scale-level texture information extracted from LS DXA images and correlates with 3D parameters of bone micro-architecture. We evaluated the ability of LS TBS to discriminate changes in astronauts who have flown on ISS missions and to determine if TBS can provide additional information compared to DXA.

Methods: Lumbar Spine (L1-4) DXA scans from 51 astronauts (mean age, 47 ± 4 yrs) were divided into 3 groups based on the exercise regimens performed onboard the ISS. “Pre-ARED” (exercise using a load-limited resistive exercise device, <300 lb), “ARED” (exercise with a high-load resistive exercise device, up to 600 lb) and “Bisphos+ARED” group (ARED exercise and a 70-mg alendronate tablet once a week before and during flight, starting 17 days before launch). DXA scans were performed and analyzed on a Hologic Discovery W using the same technician for the pre- and post-flight scans. LSC for the LS in our laboratory is 0.025 g/cm². TBS was performed at the Mercy Hospital, Cincinnati, Ohio on a similar Hologic computer. Data were analyzed using a paired, 2-tailed Student’s *t*-test for the difference between pre- and postflight means. Percent change and % change per month are noted below. Statistical significance is noted with an asterisk and *p* values below.



Exercise using the ARED

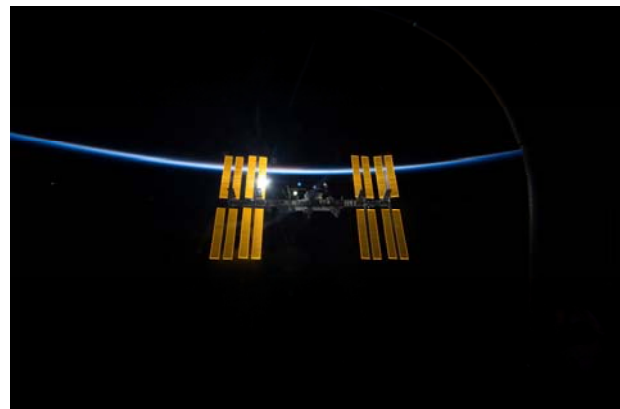
Results:

	n	TBS (mean ± SD)				DXA BMD (mean ± SD)			
		Pre ⁻¹ mm	Post ⁻¹ mm	Change ⁻¹ mm	%Ch/Mo	Pre ² g/cm ²	Post ² g/cm ²	Change ² g/cm ²	%Ch/Mo
Pre-ARED	24	1.447 ± 0.07	1.404 ± 0.09	-0.043* ± 0.04 P < 0.001	-0.53 ± 0.54	1.067 ± 0.10	1.023 ± 0.09	-0.044 ± 0.04 P < 0.001	-0.71 ± 0.51
ARED	20	1.413 ± 0.08	1.416 ± 0.08	0.003 ± 0.03 P = 0.71	0.03 ± 0.50	1.094 ± 0.11	1.071 ± 0.11	-0.023 ± 0.03 P = 0.004	-0.37 ± 0.51
Bisphos+ ARED	7	1.422 ± 0.07	1.401 ± 0.09	-0.021 ± 0.05 P = 0.32	-0.27 ± 0.64	1.038 ± 0.14	1.067 ± 0.14	0.029 ± 0.04 P = 0.07	0.56 ± 0.87

Interpretation: Our data suggest that: TBS and DXA both detected significant decrements in the LS in these pre-ARED astronauts, not unexpected given the insufficient loads provided by this early exercise device.

TBS did not detect significant changes in the ARED or Bisphos+ARED groups while DXA did detect significant changes in the ARED astronauts. These findings suggest that DXA and TBS are detecting independent effects of bone loss interventions tested in ISS astronauts in space, which may be due to distinct effects of interventions on mineral content of separate cortical vs. trabecular bone.

Conclusion: TBS, in conjunction with DXA BMD, may provide additional insight into the nature of changes (or lack thereof) in the microstructure of trabecular bone and the areal BMD of vertebral bodies.



- Have not found the number for the Wakata using ARED, alternative is - 617708main_iss030e033056_full.jpg
- Do not have the ISS pic number