

Final NASA Panel Recommendations for Definition of Acceptable Risk of Injury due to Spaceflight Dynamic Events

*Jeffrey T. Somers
Wyle Science, Technology, and Engineering Group
Johnson Space Center, Houston, Texas*

*Nate Newby
Wyle Science, Technology, and Engineering Group
Johnson Space Center, Houston, TX*

*Jessica Wells
Lockheed Martin – Information Systems & Global Solutions
Johnson Space Center, Houston, TX*

NASA STI Program ... in Profile

Since its founding, NASA has been dedicated to the advancement of aeronautics and space science. The NASA scientific and technical information (STI) program plays a key part in helping NASA maintain this important role.

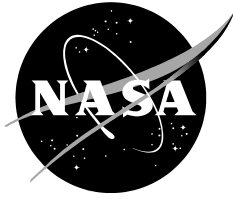
The NASA STI program operates under the auspices of the Agency Chief Information Officer. It collects, organizes, provides for archiving, and disseminates NASA's STI. The NASA STI program provides access to the NTRS Registered and its public interface, the NASA Technical Reports Server, thus providing one of the largest collections of aeronautical and space science STI in the world. Results are published in both non-NASA channels and by NASA in the NASA STI Report Series, which includes the following report types:

- **TECHNICAL PUBLICATION.** Reports of completed research or a major significant phase of research that present the results of NASA Programs and include extensive data or theoretical analysis. Includes compilations of significant scientific and technical data and information deemed to be of continuing reference value. NASA counterpart of peer-reviewed formal professional papers but has less stringent limitations on manuscript length and extent of graphic presentations.
- **TECHNICAL MEMORANDUM.** Scientific and technical findings that are preliminary or of specialized interest, e.g., quick release reports, working papers, and bibliographies that contain minimal annotation. Does not contain extensive analysis.
- **CONTRACTOR REPORT.** Scientific and technical findings by NASA-sponsored contractors and grantees.
- **CONFERENCE PUBLICATION.** Collected papers from scientific and technical conferences, symposia, seminars, or other meetings sponsored or co-sponsored by NASA.
- **SPECIAL PUBLICATION.** Scientific, technical, or historical information from NASA programs, projects, and missions, often concerned with subjects having substantial public interest.
- **TECHNICAL TRANSLATION.** English-language translations of foreign scientific and technical material pertinent to NASA's mission.

Specialized services also include organizing and publishing research results, distributing specialized research announcements and feeds, providing information desk and personal search support, and enabling data exchange services.

For more information about the NASA STI program, see the following:

- Access the NASA STI program home page at <http://www.sti.nasa.gov>
- E-mail your question to help@sti.nasa.gov
- Phone the NASA STI Information Desk at 757-864-9658
- Write to:
NASA STI Information Desk
Mail Stop 148
NASA Langley Research Center
Hampton, VA 23681-2199



Final NASA Panel Recommendations for Definition of Acceptable Risk of Injury due to Spaceflight Dynamic Events

*Jeffrey T. Somers
Wyle Science, Technology, and Engineering Group
Johnson Space Center, Houston, Texas*

*Nate Newby
Wyle Science, Technology, and Engineering Group
Johnson Space Center, Houston, TX*

*Jessica Wells
Lockheed Martin – Information Systems & Global Solutions
Johnson Space Center, Houston, TX*

Acknowledgments

The authors wish to acknowledge the effort, expertise, and professionalism of the Definition of Acceptable Injury Risk panel members:

Nancy Currie
Rick Ybarra
Susan Baggerman
Chuck Lawrence
Joel Stitzel
John Buhrman
Laurence Ullissey
Lee Morin
Thomas Marshburn
Nigel Packham
Joe McEntire
Chris Perry
Jonathon Dory
Dan Patterson
Shean Phelps
Glenn Paskoff
Carol Chancey
Sharmila Watkins
Nancy Srb

Available from:

NASA Center for AeroSpace Information
7115 Standard Drive
Hanover, MD 21076-1320

National Technical Information Service
5301 Shawnee Road
Alexandria, VA 22312

Available in electronic form at <http://ston.jsc.nasa.gov/collections/TRS/>

1.0 Introduction

A panel of experts was convened in 2010 to help define acceptable injury risk levels for space vehicle launches, landings, and abort scenarios. Classifications of spaceflight-relevant injuries were defined using four categories ranging from minor to severe injury. Limits for each injury category were agreed to, dependent on the expected number of crew exposures in a given vehicle and on whether the flight was considered nominal or off-nominal. Somers et al. captured the findings of this summit in a NASA technical memorandum.¹

This panel was recently reconvened (December 1, 2014) to determine whether the previous recommended injury limits were applicable to newly designed commercial spaceflight vehicles. In particular, previous limits were based in part on the number of crew exposures per vehicle and also were sensitive to a definition of nominal and off-nominal vehicle performance. Reconsideration of these aspects led to a new consensus on a definition of injury risk.

2.0 Summary of 2010 Panel Findings

Examining the Orion vehicle's probabilistic risk assessment for landings, the panel previously assigned acceptable risk levels to four different landing modes. One nominal water landing condition (predicted to occur $\geq 95\%$) and three off-nominal possible landing conditions were considered (Table 1). Expected injury numbers were based on 80 vehicle flights with 4 crewmembers on each, for a total of 320 crew exposures. Since off-nominal events are expected to occur so rarely, tolerance for injury risk can increase for these types of landings.

Table 1: Determination of Acceptable Orion Landing Injury Risk (Nominal/Off-Nominal Landing Cases)

Assumes: 80 Landings over Program Life – 4 Crewmembers per Landing, 320 Total Crew Landings 95% Confidence		Nominal		Off-Nominal [^]					
		End of Mission Nominal Water Landing or Pad Abort Water Landing		Ascent Abort Water Landing		End of Mission Water Landing with Parachute Failure, High Winds, High Sea State		Pad Abort Land Landing	
P(Landing)		99.6%		<1%		<1%		<1%	
Injury Class		Expected Number of Injuries	Probability of Injury	Expected Number of Injuries	Probability of Injury	Expected Number of Injuries	Probability of Injury	Expected Number of Injuries	Probability of Injury
Minor	I	18	4%	3	56%	3	56%	4	100%
Moderate	II	3	0.42%	2	39%	2	39%	3	70%
Severe	III	0	0.1%	0	17%	0	17%	0	10%
Life-Threatening	IV	0	0.02%	0	6%	0	6%	(2)*	(30%)*
All Classes		21	4.71%	5	100%	5	100%	9	100%

*Acceptance of this injury risk assumes Search and Rescue forces will get access to the crewmembers within 30 minutes of the mishap occurrence.

[^]Number of expected injuries for off-nominal was determined using 1% probability of occurrence. The current design probabilities are much lower.

The 2010 panel then decided that it would be best to define a total overall risk of injury, rather than discriminate between nominal and the rarely occurring off-nominal events. However, the Table 1 ratios were deemed important to preserve. Table 2 shows the final ratios for each injury category. The percentages are based on a 95% confidence interval of a binomial distribution based on 320 crew exposures.

Table 2: Recommendation for Acceptable Orion Landing Injury Risk (All Landing Cases)

Injury Description	Injury Class	Expected Number of Injuries	Probability of Injury
Minor	I	23/320	5%
Moderate	II	6/320	1%
Severe	III	0/320	0.02%
Life-Threatening	IV	[2/320]*	[0.25%]*
		0/320	0.02%
All Classes	I-IV	29/320	6.8%
		[31/320]*	[7.4%]*

*Acceptance of recommendations in brackets assumes Search and Rescue forces will get access to the crewmembers within 30 minutes of the mishap occurrence.

For commercial space vehicles, the total number of crew exposures could be quite different from expectations for Orion. Therefore, Table 3 was developed to examine injury rates for various numbers of crew exposures. Table 3 shows that the injury risk does not vary significantly based on the number of exposures. The median values are in the 160 to 200 exposure range.

Table 3: Maximum Nominal Risk Levels for each Injury Class Based on Number of Crewmembers Flown Over the Course of a Program

	Number of Crew Exposures								Median
	40	80	120	160	200	240	280	320	
Class I	3.49%	4.18%	4.59%	4.87%	4.68%	4.90%	5.08%	5.23%	4.8%
Class II	0.90%	1.03%	0.68%	0.86%	0.99%	1.09%	0.94%	1.03%	1.0%
Class III	0.13%	0.45%	0.30%	0.22%	0.18%	0.34%	0.29%	0.26%	0.27%
	[0.12%]	[0.44%]	[0.29%]	[0.22%]	[0.17%]	[0.34%]	[0.29%]	[0.25%]	[0.27%]
Class IV	0.13%	0.06%	0.04%	0.03%	0.03%	0.02%	0.02%	0.02%	0.03%

3.0 Final 2014 Panel Recommendations

The reconvened panel agreed that the median values would be a sound basis for a final update to the definition of acceptable risk. However, with only risk guidelines for overall vehicle life cycle, it was somewhat concerning that vehicle designers could potentially ignore any risk associated with off-nominal performance. The panel wanted to ensure the final recommendations required not-to-exceed injury limits in off-nominal conditions as well. To avoid confusion over defining off-nominal versus nominal performance, the panel decided to specify injury limits for $\geq 95\%$ of all possible vehicle dynamic events, and a set of separate not-to-exceed injury limits for the remaining 5% of cases.

To calculate these injury percentages, acceptable injury limits were found from a binomial distribution for crew exposures up to 500. The $\geq 95\%$ of all vehicle dynamic cases bore 75% of the overall risk, with the remaining 25% borne by the $\leq 5\%$ of all cases. These injury risks were then plotted against crew exposures for each category (Figure 1). Because of the nature of a binomial distribution, the risk fluctuates wildly for a small number of crew exposures; for larger number of exposures, the risk begins to approach an asymptote.

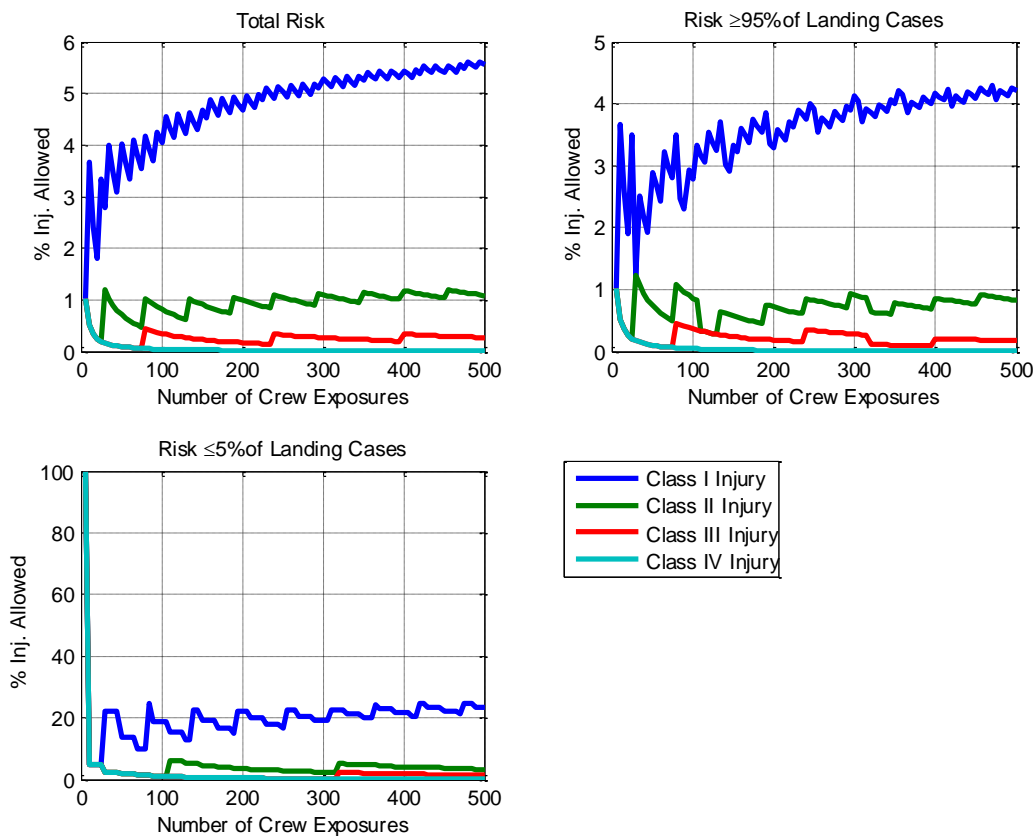


Figure 1: Allowable injury rates for overall, 95%, and 5% of all space vehicle dynamics.

Because of the sensitivity of the numerical model to small numbers of exposures, the panel chose to use the asymptote values for Injury Class I, Class II, and 5% Class III. For Class III and IV, no injuries are expected, so the asymptote approaches zero and is heavily dependent on the number of crew exposures. Rather than using the asymptote values, the panel chose to use the NASA-defined loss-of-crew (LOC) ratio as the basis for this percentage. NASA allows a vehicle to have an LOC of 1/1000 or 0.1%. This LOC calculation is for the entire mission, not just for landing, so the true value for a design will be lower. For Class III, the original definition contained a second probability based on a pad abort land landing. The panel retained this probability for the $\leq 5\%$ category, shown in parentheses, and estimated its value using the asymptote method. Thus, the panel feels it is an appropriate limit for this context. The final recommendation is shown in Table 4.

Table 4: Acceptable Risk Injury Percentage Limits for Space Vehicles Applicable to 95% of the Probabilistic Dynamic Events and Applicable to the Remaining 5% of all Cases

Injury Class	$\geq 95\%$ of all dynamic cases	$\leq 5\%$ of remaining cases
I	<4%	<23%
II	<1%	<4%
III	<0.1%	<0.7%
IV	<0.1%	[<1%]*

*Acceptance of recommendations in brackets assumes Search and Rescue forces will get access to the crewmembers within 30 minutes of the mishap occurrence.

References

- ¹Somers J, Scheuring R, Granderson B, Jones J, Newby N, Gernhardt M. Defining NASA Risk Guidelines for Capsule-based Spacecraft Occupant Injuries Resulting from Launch, Abort, and Landing. Houston, TX: National Aeronautics and Space Administration; 2014. NASA/TM-2014-217383.

REPORT DOCUMENTATION PAGE			Form Approved OMB No. 0704-0188	
Public reporting burden for this collection of information is estimated to average 1 hour per response, including the time for reviewing instructions, searching existing data sources, gathering and maintaining the data needed, and completing and reviewing the collection of information. Send comments regarding this burden estimate or any other aspect of this collection of information, including suggestions for reducing this burden, to Washington Headquarters Services, Directorate for Information Operations and Reports, 1215 Jefferson Davis Highway, Suite 1204, Arlington, VA 22202-4302, and to the Office of Management and Budget, Paperwork Reduction Project (0704-0188), Washington, DC 20503.				
1. AGENCY USE ONLY (Leave Blank)	2. REPORT DATE June 2015	3. REPORT TYPE AND DATES COVERED Technical Publication		
4. TITLE AND SUBTITLE Final NASA Panel Recommendations for Definition of Acceptable Risk of Injury due to Spaceflight Dynamic Events			5. FUNDING NUMBERS	
6. AUTHOR(S) Jeffrey T. Somers; Nate Newby; Jessica Wells				
7. PERFORMING ORGANIZATION NAME(S) AND ADDRESS(ES) Lyndon B. Johnson Space Center Houston, Texas 77058			8. PERFORMING ORGANIZATION REPORT NUMBERS S-1193	
9. SPONSORING/MONITORING AGENCY NAME(S) AND ADDRESS(ES) National Aeronautics and Space Administration Washington, DC 20546-0001			10. SPONSORING/MONITORING AGENCY REPORT NUMBER TP-2015-218578	
11. SUPPLEMENTARY NOTES				
12a. DISTRIBUTION/AVAILABILITY STATEMENT Unclassified/Unlimited Available from the NASA Center for AeroSpace Information (CASI) 7115 Standard Hanover, MD 21076-1320 Category: 16			12b. DISTRIBUTION CODE	
13. ABSTRACT (Maximum 200 words) A panel of experts was convened in 2010 to help define acceptable injury risk levels for space vehicle launches, landings, and abort scenarios. Classifications of spaceflight-relevant injuries were defined using four categories ranging from minor to severe injury. Limits for each injury category were agreed to, dependent on the expected number of crew exposures in a given vehicle and on whether the flight was considered nominal or off-nominal. Somers et al. captured the findings of this summit in a NASA technical memorandum. This panel was recently reconvened (December 1, 2014) to determine whether the previous recommended injury limits were applicable to newly designed commercial spaceflight vehicles. In particular, previous limits were based in part on the number of crew exposures per vehicle and also were sensitive to a definition of nominal and off-nominal vehicle performance. Reconsideration of these aspects led to a new consensus on a definition of injury risk.				
14. SUBJECT TERMS risk assessment; landing; abort; launch vehicles; space capsules; injuries			15. NUMBER OF PAGES 12	16. PRICE CODE
17. SECURITY CLASSIFICATION OF REPORT Unclassified	18. SECURITY CLASSIFICATION OF THIS PAGE Unclassified	19. SECURITY CLASSIFICATION OF ABSTRACT Unclassified	20. LIMITATION OF ABSTRACT Unlimited	
