

***Architectural and Behavioral Systems Design  
Methodology and Analysis for Optimal Habitation in a  
Volume-Limited Spacecraft for Long Duration Flights***

**Psychology in Architecture Conference  
University of Texas  
December 2016**

**Kriss Kennedy, RA  
Ruthan Lewis, Ph.D., M. Arch  
Larry Toups, M. Arch  
Robert Howard, Ph.D.  
Alexandra Whitmire, Ph.D.  
David Smitherman, RA  
Scott Howe, Ph.D., Ph.D. Arch**



# History of Spacecraft Affect on Behavior

**Evidence shows that architectural arrangement and habitability elements impact crew behavior and health**

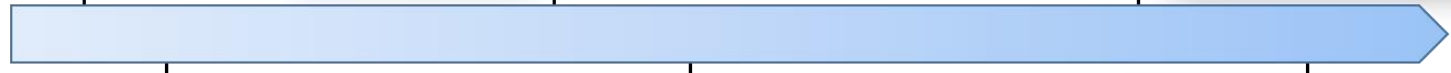
Mercury



Skylab



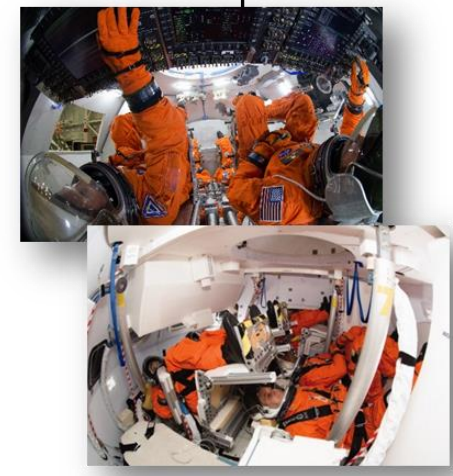
International Space Station



Gemini, Apollo



Space Shuttle



Orion



# Hazards and Risks of Spaceflight

## **Isolation & Confinement**

Cognitive or Behavioral Conditions and  
Psychiatric Disorders

Sleep Disorders

Team Cooperation, Coordination,  
Communication, and Psychosocial Adaptation

## **Altered Gravity**

Balance Disorders

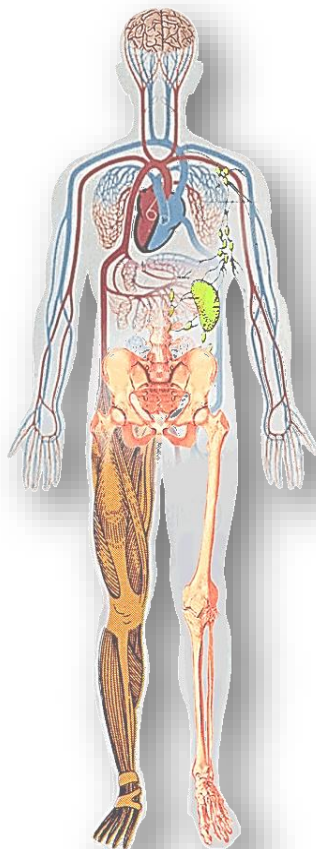
Fluid Shifts

Cardiovascular Deconditioning

Vision Impairment

Muscle Atrophy

Bone Loss



## **Hostile/Closed Environment**

Vehicle Design

Sleep Loss

Circadian Desynchronization

Work Overload

Human-Computer Interaction

CO<sub>2</sub> Levels

Toxic Exposures

Water

Food, Nutrition

## **Space Radiation**

Acute In-flight Effects

Long Term Cancer Risk

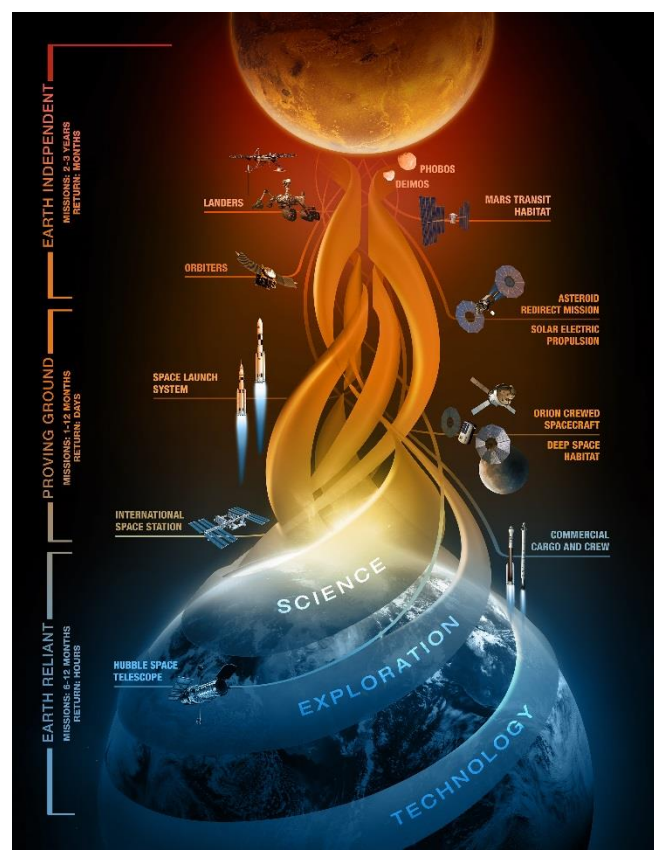
## **Distance from Earth**

“Autonomous” medical care capacity

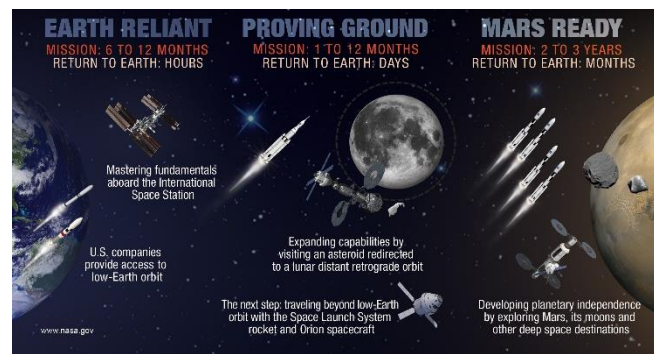
Pharmaceutical Efficacy



# Human Spaceflight Journey to/from Mars



- Several mission options for advancing human spaceflight leading to human presence on and exploration of Mars are under consideration
- As part of these options, humans will occupy deep space, i.e. beyond the International Space Station outside of the Earth’s protective magnetosphere, with increasing mission durations
  - To develop and test propulsion and life-critical technologies and practice techniques for Mars habitation
  - To understand and mitigate impact of habitation variables, e.g. isolation, dormancy
  - To understand and mitigate negative impact of environmental variables, e.g. radiation exposure



- In each environment, in transit, or on a planet’s surface, what is the most effective volume and architectural arrangement of that volume to promote optimal crew behavioral health?



# *Psychology of Long Term Isolation and Confinement*

- Astronauts perform well and thrive on 6 month International Space Station missions
- Stressors of long duration exploration missions greater than 6 months, such as a trip to/from Mars, will introduce a new paradigm
  - isolation and confinement for extended durations
  - remote distances will require autonomous operations
- Research from long duration isolation and confinement expeditions (e.g. Antarctic Stations) reveals psychiatric diagnoses (e.g. depression) which in some cases may have led to evacuations





# Determining Minimally Acceptable Net Habitable Volume

- The volume and habitability recommendations for future spaceflight habitats is based on functional task analyses and behavioral considerations
- Correlation of minimally acceptable net habitable volume to mission duration is not evident
- There is insufficient data to support a correlation of mission location to minimally acceptable net habitable volume
- Thus, determination of minimally acceptable net habitable volume may be based on factors such as:
  - Mission parameters
  - Crew tasks
  - Potential multi-functional areas and co-location of tasks

Notional Mission to Mars Parameters	
Total Mission Duration	30 months: 6 months to Mars, 18 months on Mars, 6 months from Mars
Crew Size	6
Crew Composition	pilot, physician, geologist, biologist, engineers
Gender Mix	Variable; undefined
Cultural Mix	International
Mission Tempo	Long periods of low mission tempo, interspersed with high activity
Communication Delays	Up to 22 minutes one-way with blackout periods
Autonomy from Ground	Increasing en route to Mars, decreasing during return to Earth

Private Quarters  
Sleep Space



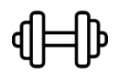
Dining  
Communal



Workspace



Exercise  
Recreation



Suit  
Donning



Medical  
Care



Hygiene



Translation  
Circulation



Stowage  
Access





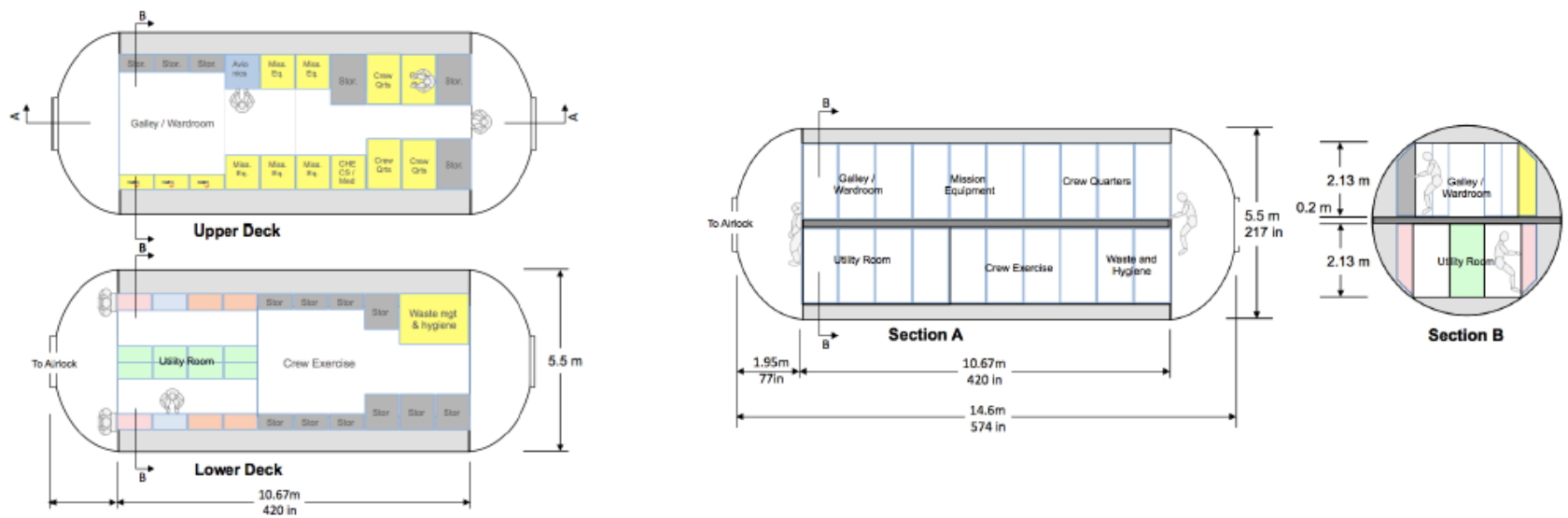
## *Current NASA-Supported Research and Activities*

- Effects of prolonged isolation and confinement, as well as mitigation strategies to support liveability, well being and performance
  - Volume, layout, and design recommendations for specific work areas
  - Food systems that support individual and team health (e.g. facilitate group dining)
  - Optimal lighting to support aesthetics of the environment, visual task performance, and importantly, help maintain circadian rhythms and sleep-wake cycles
- Formulation of a variety of transit and surface spacecraft layouts to accommodate functions, mass and volume constraints, human performance, health, and safety

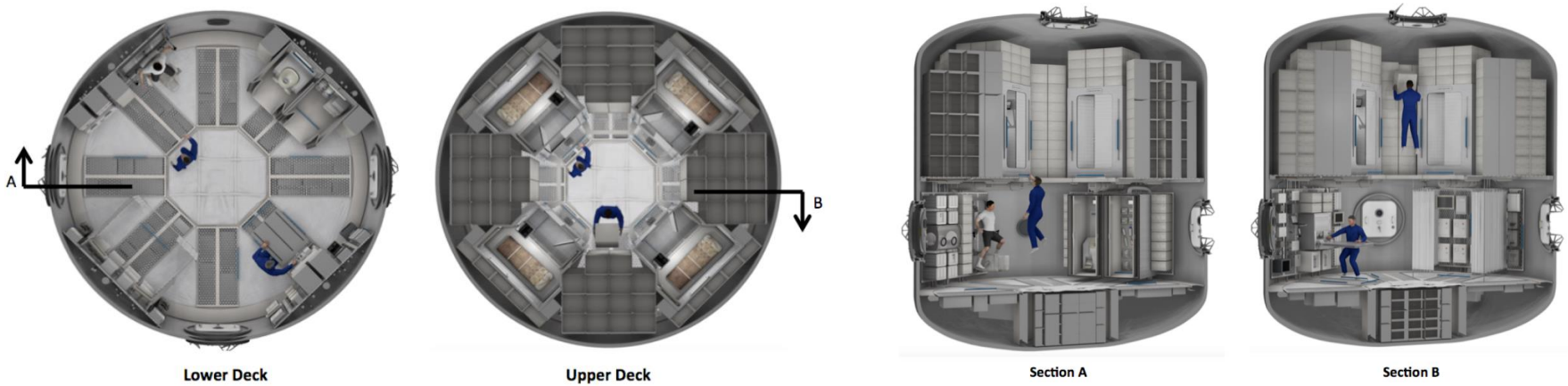


# Notional Arrangements and Considerations for Transit Habitat

## Notional Longitudinal Arrangements



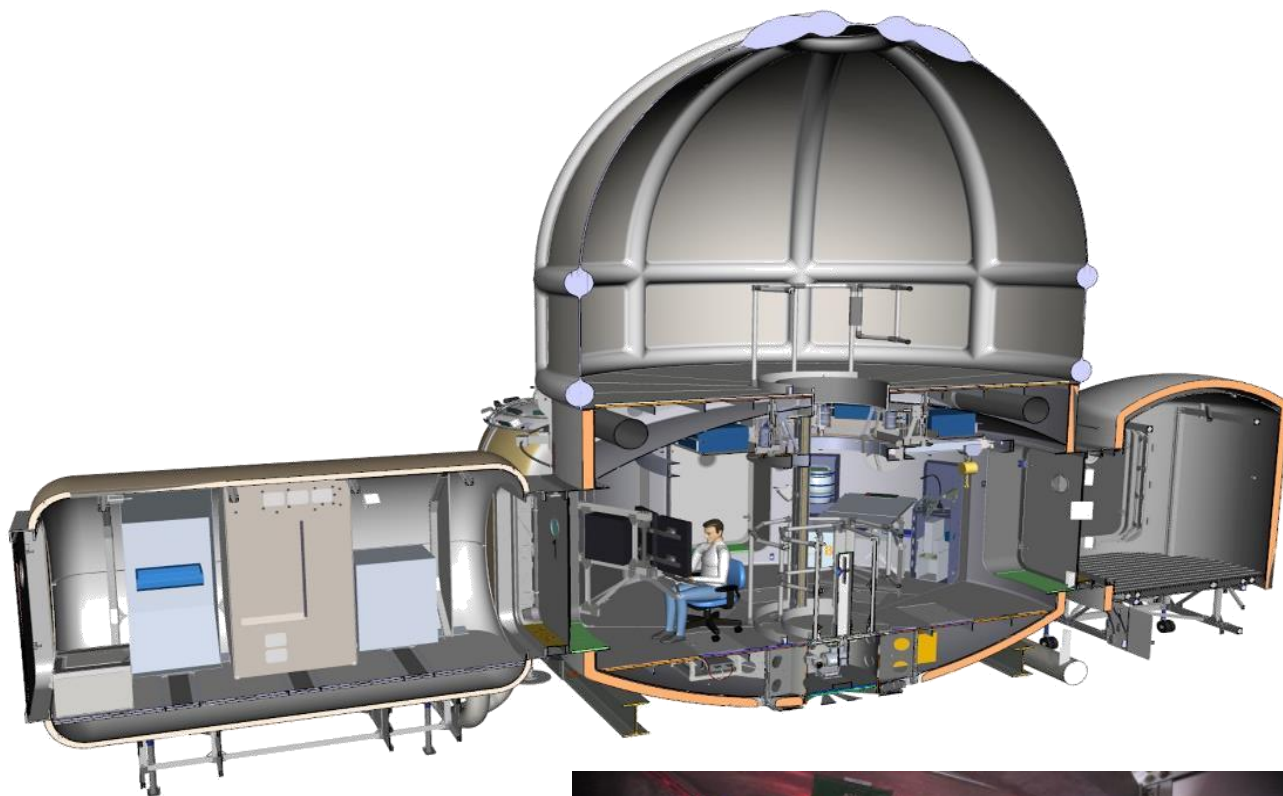
## Notional Vertical/Axial Arrangements







# Notional Arrangements and Considerations for Surface Habitat





# *Psychological and Architectural Design Integration*

- Future human spaceflight mission conditions impact architecture and psychological responses
  - Limited overall volume and small unit volumes
  - Small number of crew
  - Transitions from Earth Reliant to Earth Independence
- The unique environment of space demands special considerations be taken into account for optimal habitation design
  - Environmental conditions (e.g., noise, vibration, lighting)
  - Human physical capabilities and limitations (e.g., anthropometry, strength)
  - Psychosocial considerations
- Specific concerns to maintain psychological health and well-being
  - Sizing of functional areas, especially crew quarters
  - Appropriate allocation of private and public spaces
  - Functional and hardware layout to accommodate “live”, “play”, and “work”
  - Optimize usability: efficiency, effectiveness, and satisfaction for users



## *Additional Architectural Design Considerations*

- Volume is defined by the functions required of the mission
- Potential paradigm shift to larger inflatable/expandable pressure vessels/habitats
- Habitation design features
  - Internal Aesthetics
  - Functional Allocations
  - Use of materials
  - Use of lighting
  - Creation of private and social spaces
  - Separation of noisy and quiet zones
  - Separation of “dirty” and clean zones
  - Separation of “living” and “working” zones
  - Line of Sight
  - Local Vertical