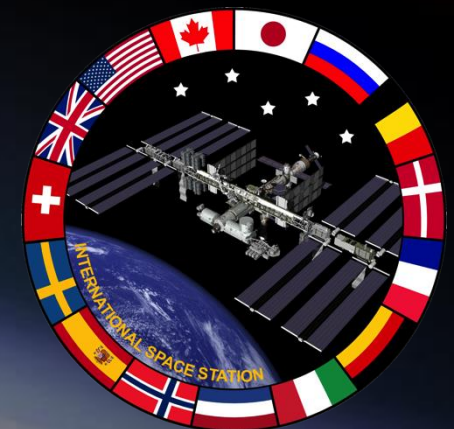
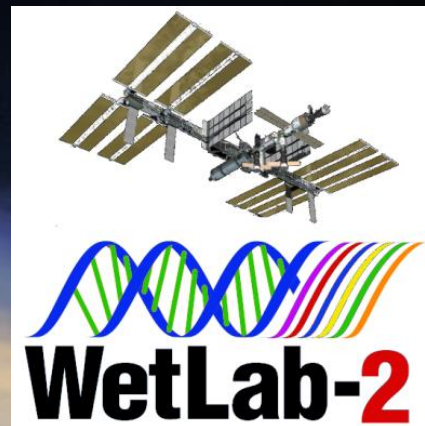




# WetLab-2: Providing Quantitative PCR Capabilities on ISS



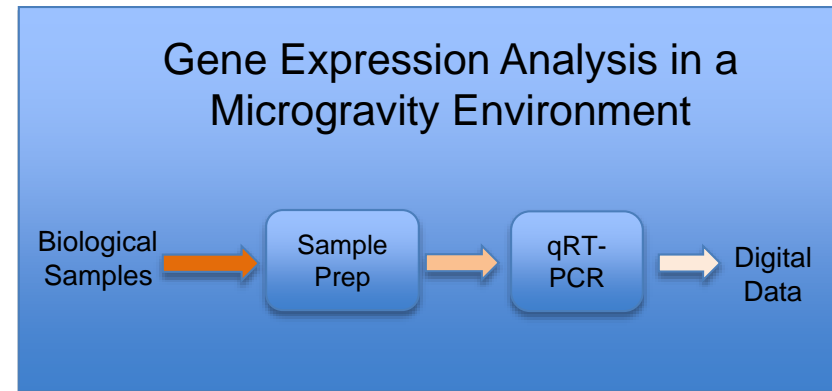
Macarena Parra  
Ames Research Center  
July 9, 2015



# WetLab-2 Objectives

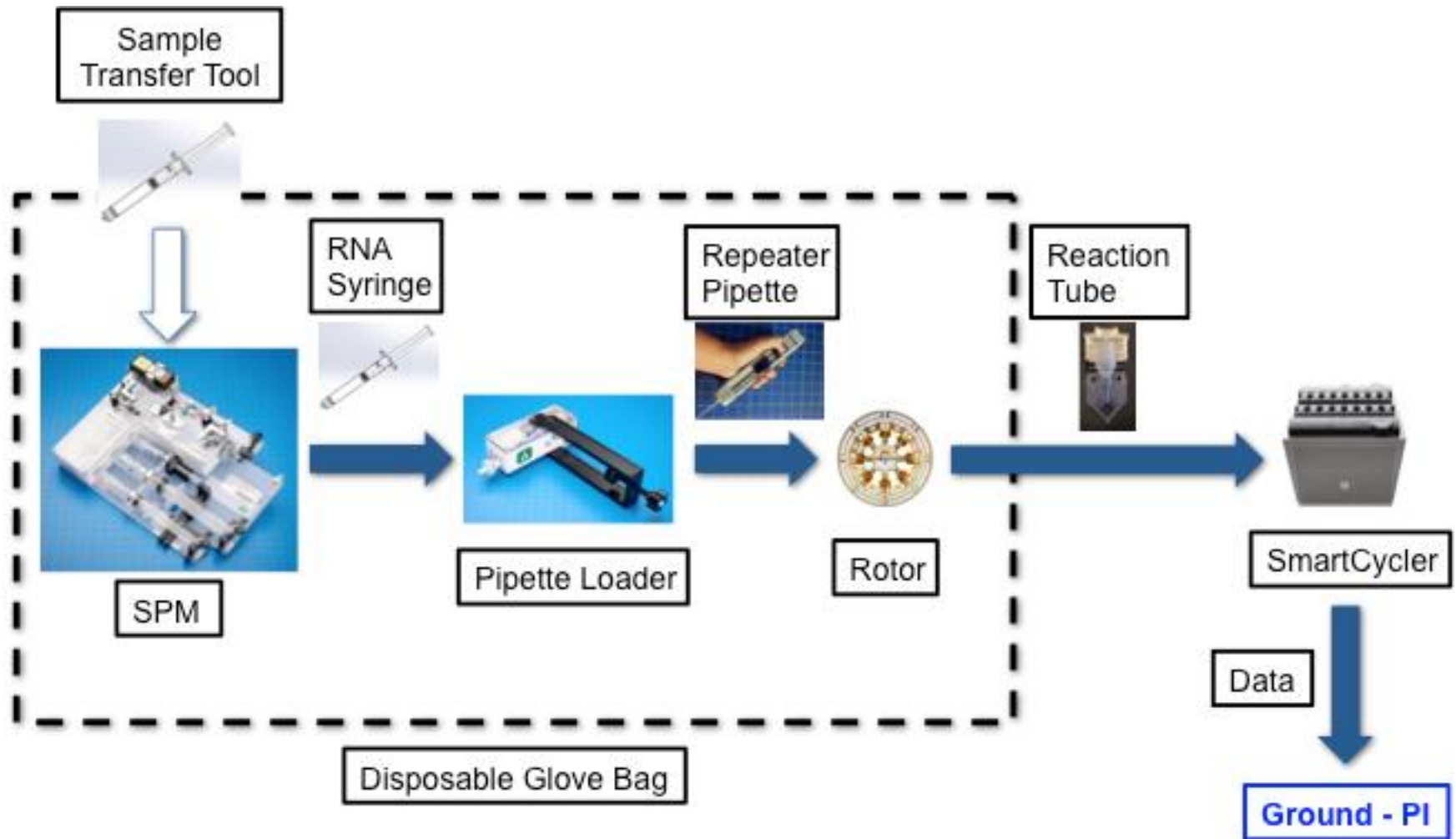


- To place on the ISS a research platform to facilitate space biology gene expression research.
  - Capability to process samples and perform qRT-PCR
- Facility will support multiple sample types (bacteria, cells, tissue)
- The analyzer will remain on ISS, while the experiment-specific disposable hardware will launch with the experiments.
- Also capable of supporting analysis of air, surface, water, and crew health.
- Validation Flight: SpaceX-7





# WetLab-2 Operations Overview





# Sample Transfer Tool



- WL2 uses a Luer-lok connection to accept samples
- Techshot Analytical Containment Transfer Tool (ACT2)
  - Uses luer-lok
  - Provides two levels of containment
  - Maintained throughout sample transfer process
- Standard syringe can be used if two containment levels are not needed

## For Validation Flight:

- Will use the 5ml configuration of the ACT2
- Sample (*E. coli*) will be frozen at -80C after loading in unit
- Crew will thaw the sample then use it as input to the SPM
- Will use a standard luer-lok syringe to introduce the tissue

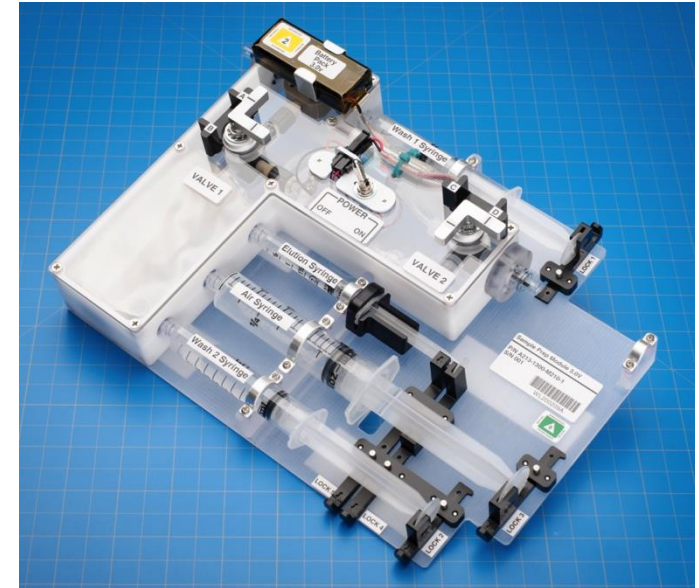




# Sample Preparation Module (SPM)



- Function of SPM
  - Breaks open cells and binds RNA to column
  - Washes RNA
  - Elutes RNA into removable RNA syringe
- Two versions: mammalian, bacterial
- Closed system
- Fluids are pre-loaded in syringes
- No alcohols or organic solvents
- Disposable one time use
- Designed to be run in Disposable Glove Bag (DGB)
- Crew manipulations consist of:
  - Attaching and removing syringes
  - Turning OmniLyser on and off
  - Pushing syringe plungers
  - Switching valves



**System has been successfully tested on the ground with bacterial and mammalian cells**

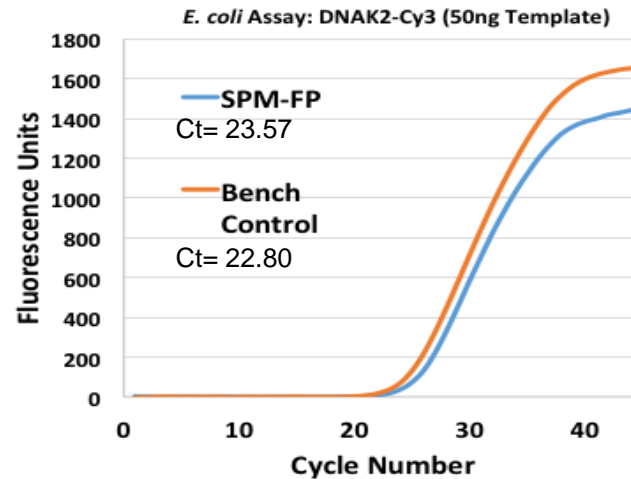
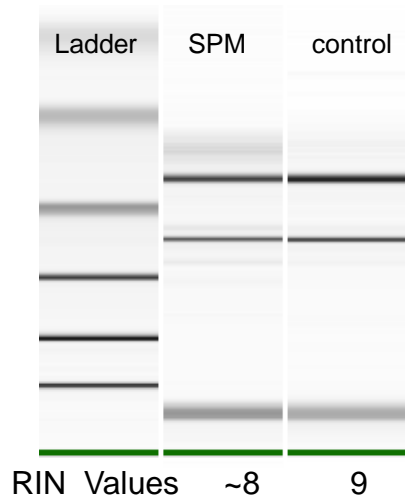


# Sample Preparation Module (SPM)

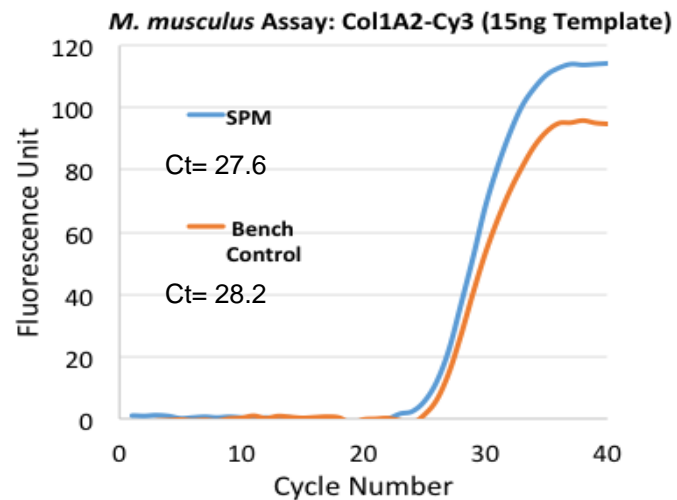
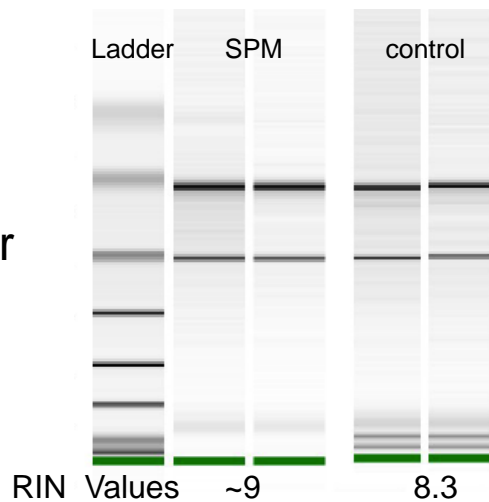


SPM runs give comparable results to those from the already proven ClaremontBio bench procedure

*E. coli*



Mouse liver

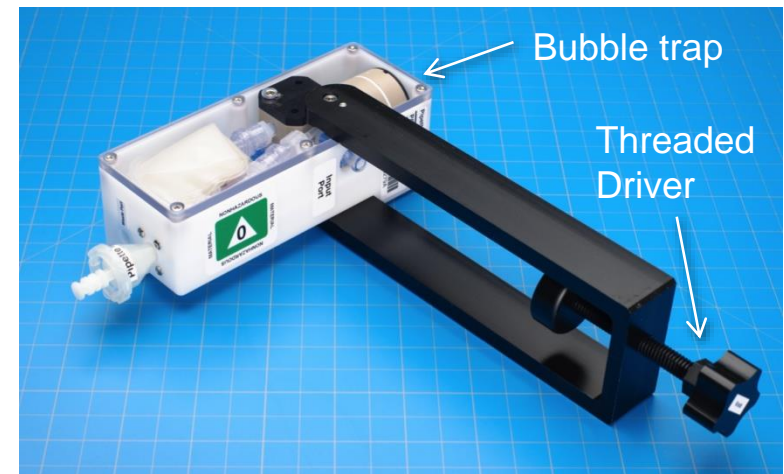




# Pipette Loader



- Function of RAM (Pipette Loader)
  - Removes air bubbles from the RNA sample
  - Loads pipette tip
- Closed system
- Designed to be run in the Disposable Glove Bag (DGB)
- No fluids pre-loaded (long shelf life)
- Sample must be driven slowly through the bubble trap to be effective
- Loads the sample into the Repeater Pipette Tip for downstream tube loading

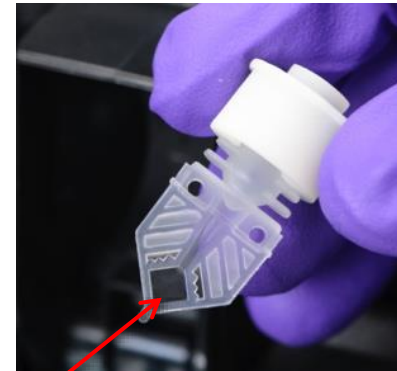




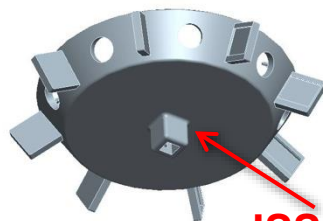
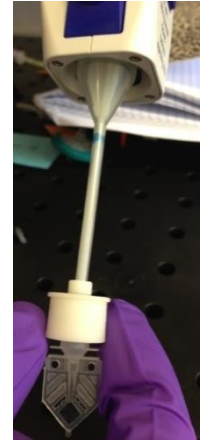
# Reaction Tube Loading and Rotor



- Reaction Tube Loading
  - Pipette is used to load 25ul into each Reaction Tube
  - Loading occurs through septum of modified cap
  - Prototypes tested on Parabolic Flight
- Reaction Tube Rotor
  - Holds 8 Reaction Tubes
  - Rotor is attached to drill on ISS
  - Spin to get RNA into the sample window
  - Prototypes used on Parabolic Flight – design changes made based on experience



Sample Window



ISS Drill Interface







# Pre-filled Reaction Tubes



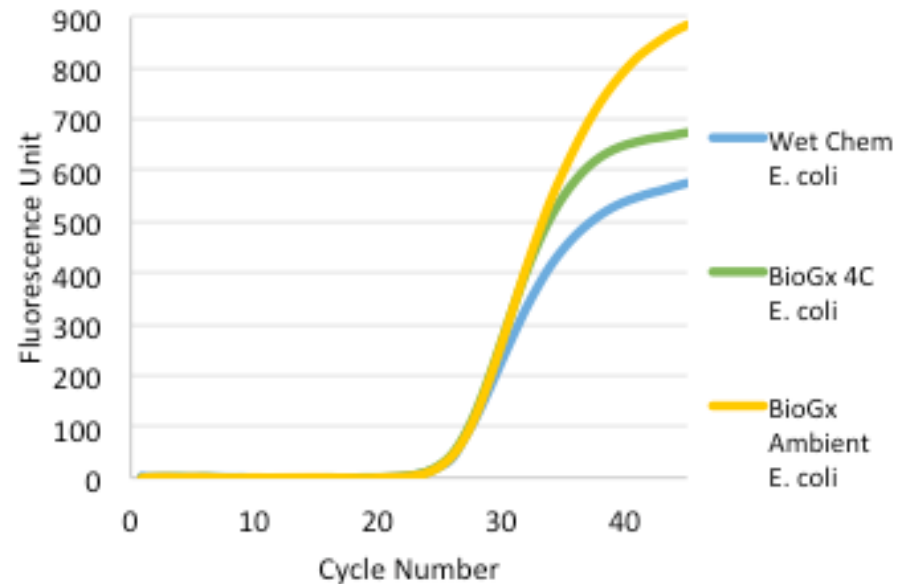
- Pre-filled Reaction Tubes
  - Tubes are a COTS SmartTube with a custom septa cap for loading in microgravity
  - Tubes contain lyophilized primers, probes, enzymes and Master Mix
  - Tubes will be foil packed to protect from moisture and light
  - Lyophilized Reagents give comparable data to commercial wet chemistry reagents



## Lyophilized qPCR Assay

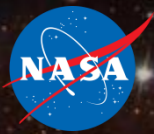


## NASA Formulated BioGx Lyophilized Reagents





# SmartCycler Hardware

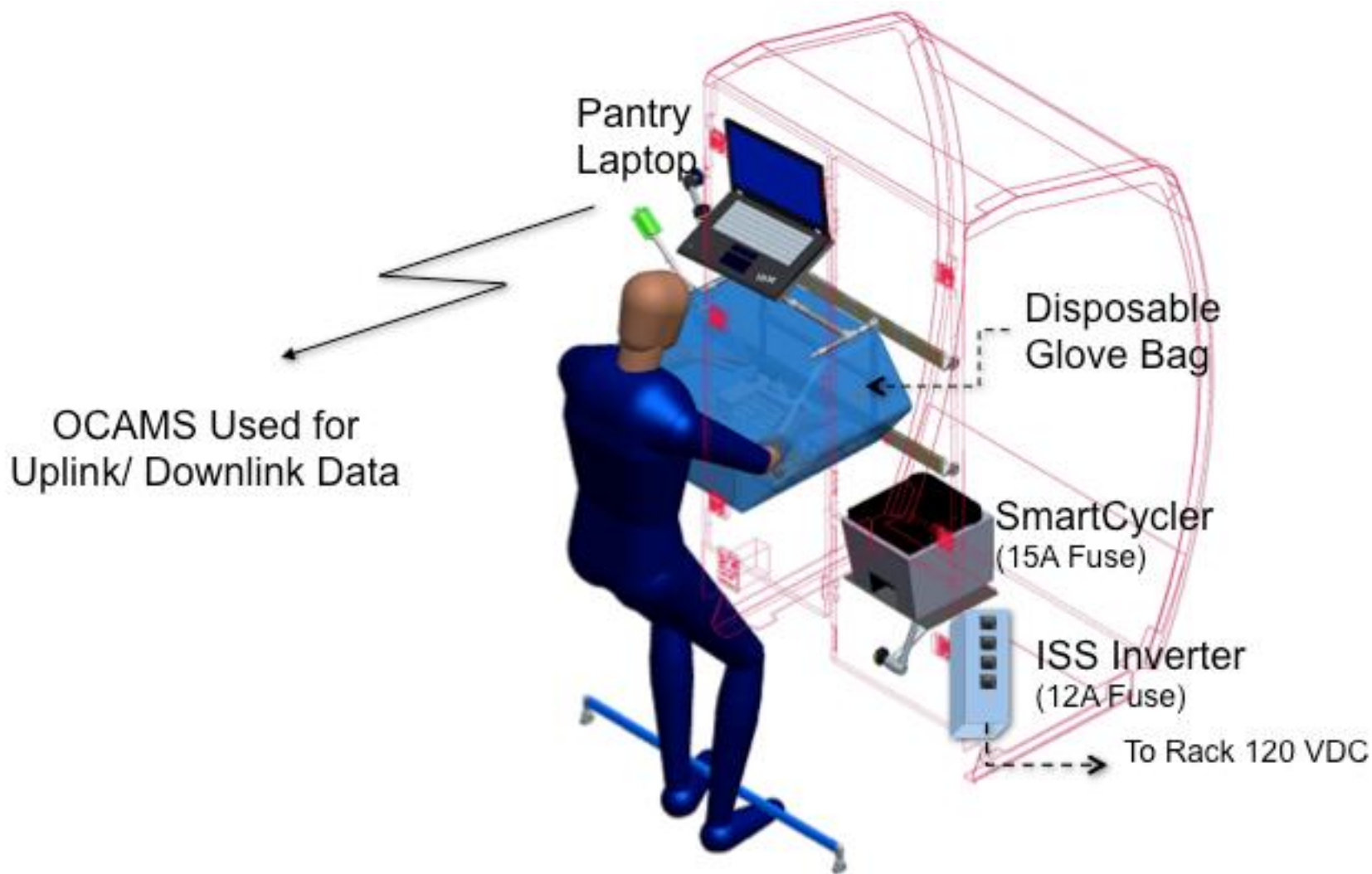


- SmartCycler
  - qRT-PCR system
  - Instrument is designed for field work
  - Will fly as a COTS item
  - Will be used in the aisle
  - Mounted on a Bogun Arm on the rack
  - Provides 16 wells and multiplexing capability
  - Thermal programs can be uploaded from the ground
  - Data can be downlinked to ground after run





# On-Orbit Configuration





# Validation Flight – SpaceX-7



**Goal of Validation Flight:** On-orbit test and check-out of the WetLab-2 system in a systematic way to ensure it will return valid data to future researchers

Objectives of Validation Flight:

- Install software and set-up hardware (Session 1)
- Does real-time PCR data generated on-orbit match data on earth? (Session 2)
  - No convection or other microgravity related issues
  - Validate SmartCycler, RAM, tube loading and rotor functions
- Does the Sample Processing Module function correctly on-orbit? (Session 3)
  - All fluidic manipulations function properly
  - Prove out system with first sample type (*E. coli*)
  - Test system using on-orbit isolated RNA as input to SmartCycler
- Does system function correctly on-orbit with tissues? (Session 4)
  - All fluidic manipulations function properly
  - Prove out system with second sample type: mouse tissue

Flight results from each session will be compared to results from ground controls

Ground controls will be run with a 2-24 hour delay from the flight samples



# End to End Test Data



## Session 3: *E. coli* qRT-PCR

Site ID	Protocol	Sample ID	Sample Type	FAM Ct	Cy3 Ct	Cy5 Ct	Avg A	SD	Avg B	SD	Avg C	SD
A1	Session 3	Gene A	E. coli RNA	19.87	0	0	20.08	0.25				
A2	Session 3	<i>singleplex</i>	E. coli RNA	20.06	0	0						
A3	Session 3		E. coli RNA	20.44	44.44	0						
A4	Session 3		E. coli RNA	19.94	35.29	0						
A5	Session 3	Gene B	E. coli RNA	0	20.44	0			20.29	0.41		
A6	Session 3	<i>singleplex</i>	E. coli RNA	0	20.13	0						
A7	Session 3		E. coli RNA	0	20.78	0						
A8	Session 3		E. coli RNA	0	19.82	0						
A9	Session 3	Genes A&B	E. coli RNA	20.03	20.35	0	19.75	0.42	20.40	0.15		
A10	Session 3	<i>duplex</i>	E. coli RNA	19.32	20.58	0						
A11	Session 3		E. coli RNA	19.47	20.22	0						
A12	Session 3		E. coli RNA	20.19	20.43	0						
A13	Session 3	Genes A, B, & C	E. coli RNA	20.24	20.75	22.55	19.96	0.89	20.97	0.69	22.98	1.02
A14	Session 3	<i>triplex</i>	E. coli RNA	20.09	21.71	23.29						
A15	Session 3		E. coli RNA	20.81	21.3	24.24						
A16	Session 3		E. coli RNA	18.71	20.12	21.85						

Successful singleplex, duplex and triplex results

This data is typical for post-optimization runs



# End to End Test Data



## Session 4: mouse liver qRT-PCR

Site ID	Protocol	Sample ID	Sample Type	FAM Ct	Cy3 Ct	Cy5 Ct	Avg A	SD	Avg B	SD	Avg C	SD
A1	Session 4	Gene A	mouse liver RNA	22.68	0	0	22.29	0.35				
A2	Session 4	<i>singleplex</i>	mouse liver RNA	21.83	0	0						
A3	Session 4		mouse liver RNA	22.3	0	0						
A4	Session 4		mouse liver RNA	22.36	0	0						
A5	Session 4	Gene B	mouse liver RNA	0	22.15	0			21.62	0.44		
A6	Session 4	<i>singleplex</i>	mouse liver RNA	0	21.07	0						
A7	Session 4		mouse liver RNA	0	21.66	0						
A8	Session 4		mouse liver RNA	0	21.61	0						
A9	Session 4	Genes A&B	mouse liver RNA	23.47	21.61	0	23.86	0.72	21.55	0.15		
A10	Session 4	<i>duplex</i>	mouse liver RNA	23.79	21.48	0						
A11	Session 4		mouse liver RNA	24.89	21.72	0						
A12	Session 4		mouse liver RNA	23.27	21.37	0						
A13	Session 4	Genes A, B, & C	mouse liver RNA	26.51	23.32	25.83	26.58	0.85	23.38	0.38	26.41	1.23
A14	Session 4	<i>triplex</i>	mouse liver RNA	25.64	23.2	25.71						
A15	Session 4		mouse liver RNA	27.7	23.06	25.84						
A16	Session 4		mouse liver RNA	26.48	23.93	28.26						

Successful singleplex, duplex and triplex results

This data is typical for post-optimization runs



# Conclusion



- WetLab-2 will facilitate space biology gene expression research
  - Establishes a qRT-PCR analytical instrument on the ISS.
  - Provides a Standard Transfer System for sampling among Wetlab-2 and other bioprocessing & analytical systems (Techshot ACT2)
  - Sample preparation of minimal complexity, can be completed by crew in <2 hours
- Reduce need for downmass of samples due to on-orbit analysis
- Allow researchers to begin to utilize the ISS as a fully working laboratory
  - Results will be available to researchers within hours of run completion allowing for the potential for interactivity with experiments driven by the analysis of results
- Provide on-orbit analysis of air, surface, water, and clinical samples to monitor environmental contaminants and crew health.
  - Results would be available in as little as 90 min compared to current testing that takes 3-6 months due to the need for sample return
- Looking for users of the system after completion of validation flight



# WetLab-2 Team



## Management and Systems Engineering

Julie Schonfeld  
Mark Mallinson  
Eddie Uribe  
Gary Hiatt

## Science Team

Eduardo Almeida  
Macarena Parra  
Jimmy Jung  
Luan Tran

## S&MA

Leonard Hee  
Dean Chacon

## Configuration Management

Mike Henschke

## Engineering

Peter Tong  
Youssef Mohamedaly  
Tori Chinn  
Liz Hyde  
Tony Chen  
Sean Sharif

## Fluidics

Travis Boone

**PIM:** Laura Holcomb  
**Ops POC:** Lisa Prendergast  
**RIM:** Melissa Wallace (Brienne Shkedi)  
**RPM:** Jessica Curry

## Software

Matt Chin  
Matt Everingham

## Test Leads

Dzung Hoang  
Jennifer Murphy

## Operations

Jessica Hauss  
Cindy Harris

## Finance

Veny Jubilo

## Manufacturing

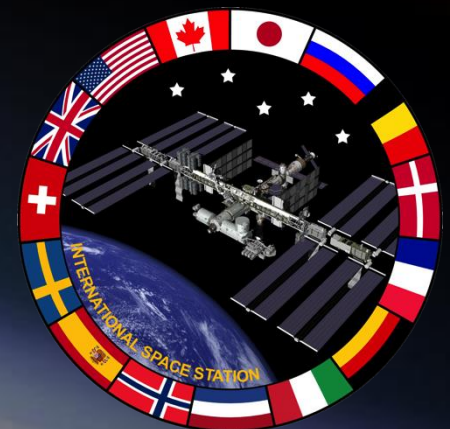
Emmett Quigley  
Ron Strong

Note: Wetlab-2 = Wet Lab RNA SmartCycler





# Backup Slides





# End to End Test Data



## Session 2: q-PCR using QC DNA

Site ID	Protocol	Sample ID	Sample Type	FAM Ct	Avg	SD
A1	Session 2	Low Template	E.coli DNA	30.25	29.72	0.38
A2	Session 2		E.coli DNA	29.71		
A3	Session 2		E.coli DNA	29.35		
A4	Session 2		E.coli DNA	29.57		
A5	Session 2	Mid Template	E.coli DNA	22.6	22.55	0.15
A6	Session 2		E.coli DNA	22.59		
A7	Session 2		E.coli DNA	22.67		
A8	Session 2		E.coli DNA	22.33		
A9	Session 2	High Template	E.coli DNA	16.04	16.30	0.45
A10	Session 2		E.coli DNA	16.21		
A11	Session 2		E.coli DNA	16.95		
A12	Session 2		E.coli DNA	15.99		
A13	Session 2	No Template	E.coli DNA	0	0	0
A14	Session 2		E.coli DNA	0		
A15	Session 2		E.coli DNA	0		
A16	Session 2		E.coli DNA	0		

No carryover from tube to tube

This data is typical



# Post-Validation/Post-Flight



- Fluidics components are disposable
- SmartCycler to remain on board ISS
- SLPS Principle Investigators who propose to use the SmartCycler with launch fluidics components with science hardware
  - Current estimates indicate SmartCycler use 2-4 investigations per year
  - Reagents loaded in SPM and SmartTubes to be experiment-specific