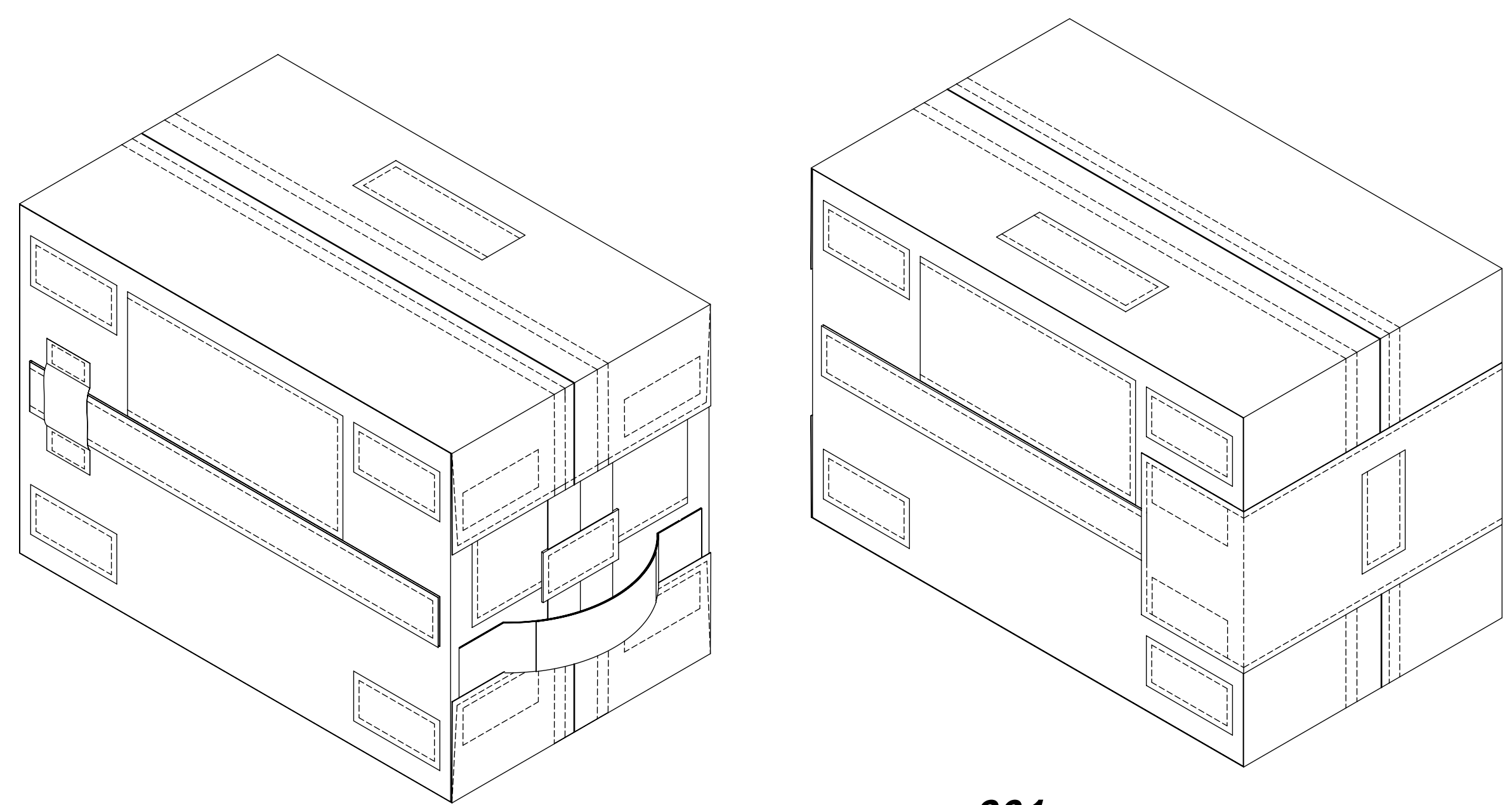


DIMENSIONAL TOLERANCE: UNLESS NOTED OTHERWISE						
LENGTH OVER	0 - .5	.5 - 1.5	1.5 - 10.0	10.0 - 20.0	OVER 20.0	ANGLE
TOLERANCE	±1/16	±1/8	±1/4	±3/8	±1/2	±2°



-301
ISOMETRIC VIEWS
KIT CLOSED
ZIPPER NOT SHOWN
REFERENCE ONLY

FLAG NOTES:

- 1 SILVER INK PEN (ITEM 49) IS USED FOR FABRICATION PURPOSES ONLY. THE PEN IS NOT PART OF THIS ASSEMBLY.
- 2 CUT WEBBING WITH HOT KNIFE TO PREVENT FRAYING.
- 3 X IN P/N DESIGNATES WIDTH OF TAPE. 1", 2", & 3" IS ACCEPTABLE.
- 4 MAKE FROM P/N 9476-1", BALLY RIBBON MILLS, BALLY, PA, CAGE CODE: 83435
- 5 MAKE FROM P/N 60650ROY, NOAH LAMPORT, LOS ANGELES, CA., CAGE CODE 3AYL3.
- 6 MAKE FROM P/N 9476-1/2", BALLY RIBBON MILLS, BALLY, PA, CAGE CODE: 83435
- 7 MAKE FROM P/N 14267B, SAINT GOBAIN PERFORMANCE PLASTICS, HOOSICK FALLS, NY., CAGE CODE 1ECV7.
- 8 BOND COVER ASSEMBLY (ITEM 3) AND LINER ASSEMBLY (ITEM 4) TO BOTH SIDES OF STIFFENER FRONT/BACK (ITEM 39) AND STIFFENER SPINE (ITEM 40) AND STIFFENER ENDS (ITEM 41) AND STIFFENER SIDES (ITEM 42) USING TRANSFER TAPE (ITEM 50).
- 9 1/2 INCH SEAM ALLOWANCE.
- 10 SEAL ENDS OF ZIPPER TAPE (ITEM 45) WITH HOT KNIFE TO PREVENT FRAYING.
- 11 BOND DIVIDER ASSEMBLY (ITEM 16) TO BOTH SIDES OF STIFFENER DIVIDER TOP (ITEM 43) AND STIFFENER DIVIDER BOTTOM (ITEM 44) USING TRANSFER TAPE (ITEM 50).
- 12 MAKE FROM P/N 9981-1 3/4, BALLY RIBBON MILLS, BALLY, PA, CAGE CODE 83435.

NOTES: UNLESS OTHERWISE SPECIFIED

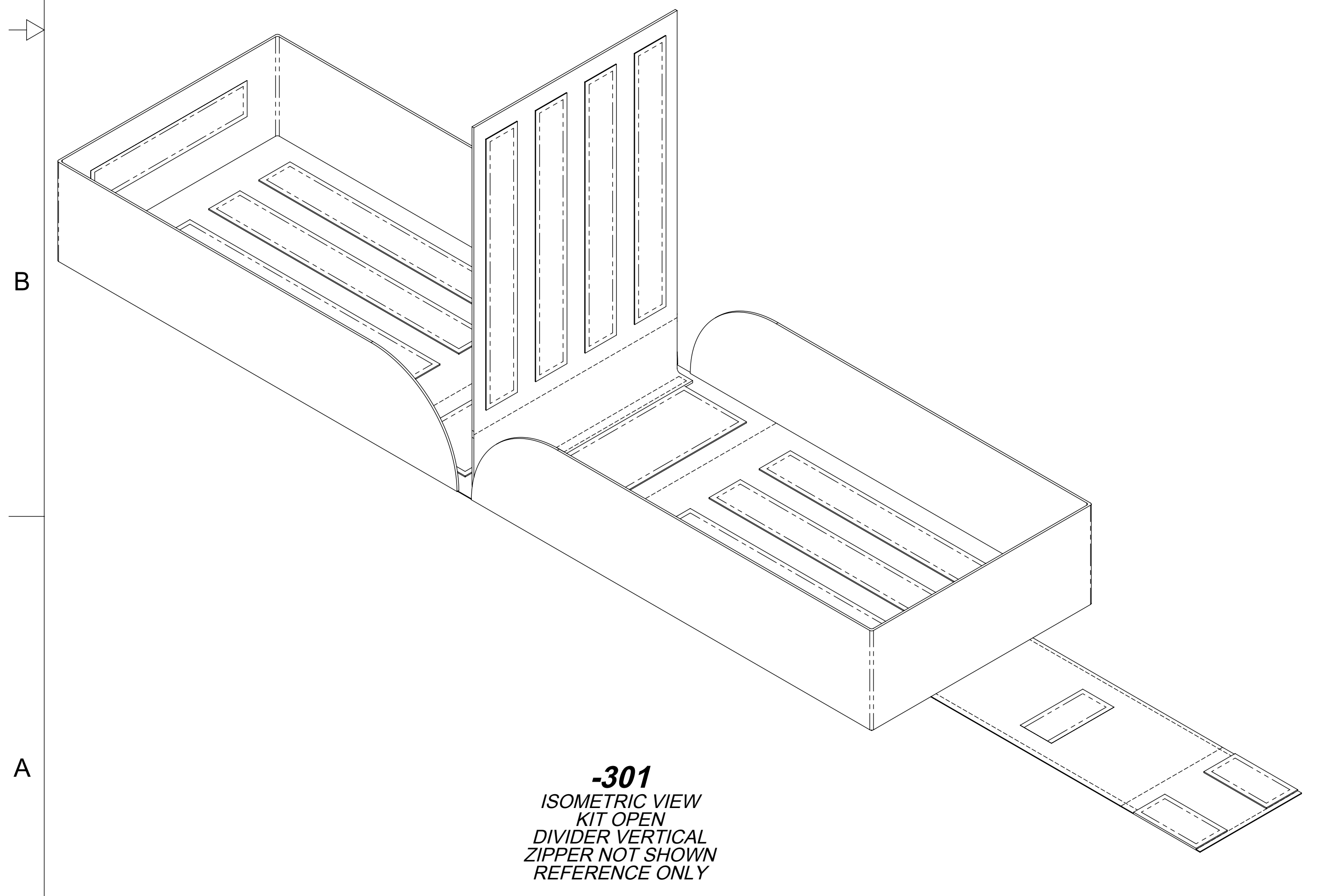
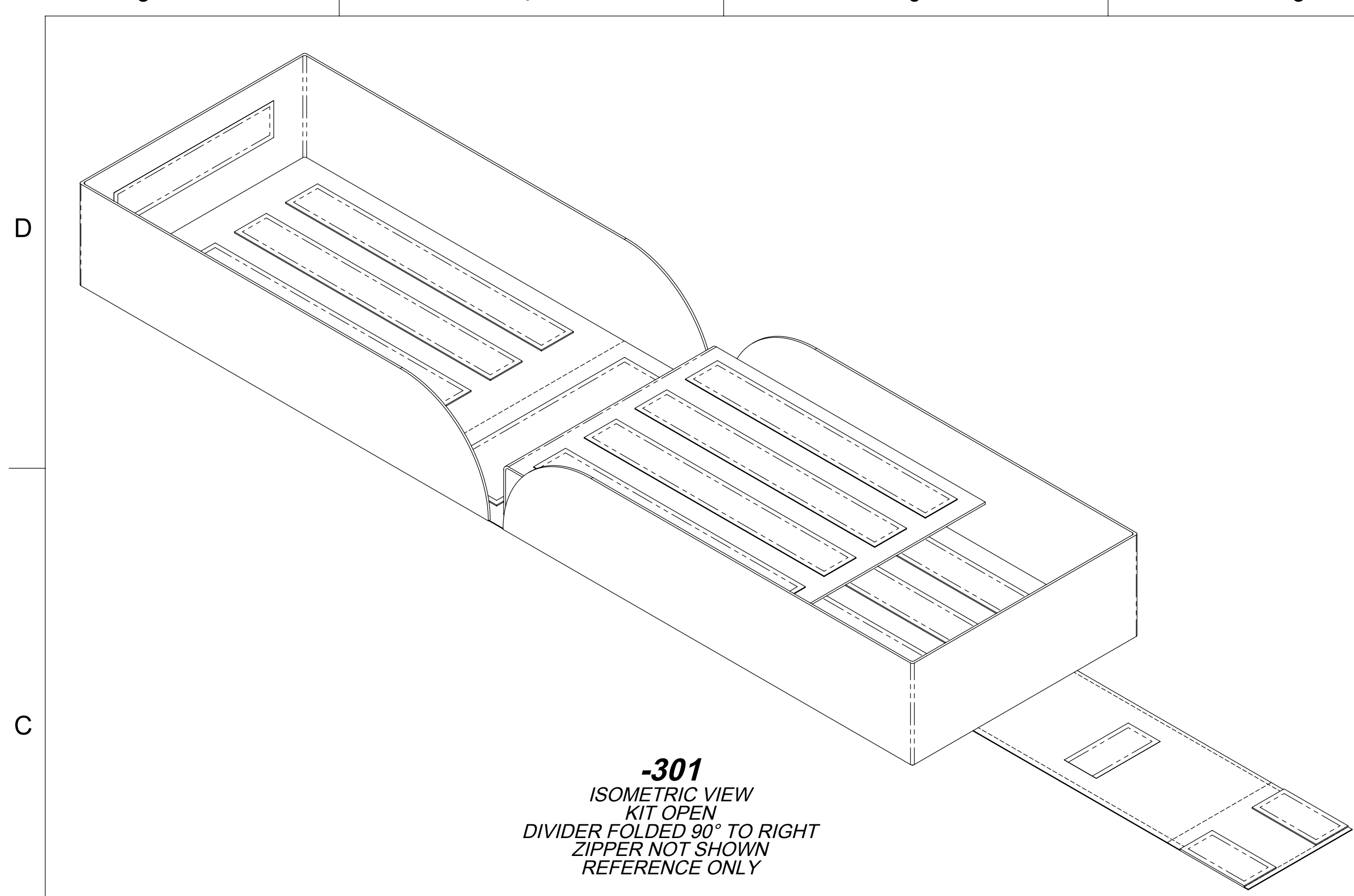
1. INTERPRET DRAWING PER NASA/JSC JPR 8500.4, ENGINEERING DRAWING SYSTEM MANUAL.
2. ACCEPTANCE CRITERIA FOR SEAMS AND STITCHES PER CSD-A-533.
3. ALL TOP STITCHING TO BE 1/8 ± 1/16 FROM FINISHED EDGE OF MATERIAL.
4. HAND STITCHING IS ACCEPTABLE AT ANY POINT IN THE ASSEMBLY WHERE FABRICATION TIME AND/OR QUALITY OF THE ITEM DICTATES ITS USE.
5. STITCHING TO BE 6-8 STITCHES PER INCH, TYPE 301 LOCK STITCH PER ASTM-D 6193, USING THREAD (ITEM 47).
6. BOND ALL RAW EDGES AND THREAD ENDS USING DILUTED CONTACT ADHESIVE (ITEM 48). DILUTE 50/50 WITH POTABLE WATER.
7. CLEAN TO LEVEL GC PER NASA/JSC PRC-5001.
8. MARK PART NUMBER ON HANDLE (ITEM 14) PRIOR TO STITCHING WINDOW (ITEM 32) IN PLACE USING MARKER (ITEM 51) PER NASA/JSC PRC-9002. PREPARE AREA TO BE MARKED WITH 2 COATS OF ADHESIVE (ITEM 48) DILUTED 50/50 WITH POTABLE WATER.
9. 3/4 INCH SEAM ALLOWANCE.
10. DIMENSIONS ARE IN INCHES.

REV	ZONE	DESCRIPTION OF CHANGE
2	---	REVISED AND REDRAWN
	---	SHEET 4 WAS SHEET 5, SHEET 5 WAS SHEET 6, SHEET 6 WAS SHEET 4, DELETED SHEET 10
	PL	DELETED BLANK SPACES 17, 18, 19 & 38
	PL	RENUMBERED PARTS LIST DUE TO ITEM NUMBERS SHIFT
	PL	LINE ITEMS 10-14, 16, 17, 18, 20, 29 & 45 MATERIAL SIZE HAS CHANGED
	PL	ADDED DASH NUMBER -026 THRU -030
	PL	DELETED -017
	PL	ITEM 8 CHANGED QTY FROM 2 TO 1 IN -902 COLUMN
	PL	ITEM 15 MOVED QTY 2 FROM -701 TO -702 COLUMN
	PL	ITEM 16 CHANGED QTY 1 IN -907 TO QTY 2
	PL	ITEM 22 ADDED QTY 10 TO -901 COLUMN
	PL	ITEM 32 ADDED QTY 2 TO -702 COLUMN
	PL	ITEM 34, -901 QTY WAS 6, IS 4
	PL	ITEM 43 & 44 MOVED QTY 1 FROM -701 TO -907 COLUMN
	---	SHEET 10, MOVED SECTION C-C TO SHEET 7, MOVED -905 AND SECTION J-J TO SHEET 8
	1/A8	UPDATED GENERAL NOTE 8
	PL	P/N -023 DESCRIPTION CHANGED

QTY	QTY	QTY	QTY	QTY	QTY	QTY	QTY	QTY	QTY	QTY	CAGE CODE	PART NUMBER	DESCRIPTION	MATERIAL	SPECIFICATION	FRAC CRIT	TRACE CODE	REF DES	ITEM	FLAG	NOTES
				4							21356	-016	FASTENER, LOOP	NYLON, WHITE, 1 X 2 1/4 LG	A-A-55126 CLASS 1	N	LL		25		
		8									21356	-015	FASTENER, LOOP	NYLON, WHITE, 1 X 8 1/2 LG	A-A-55126 TYPE 2, CLASS 1	N	LL		24		
				2							21356	-014	FASTENER, HOOK	NYLON, WHITE, 1 X 1 LG	A-A-55126 TYPE 2, CLASS 1	N	LL		23		
			1	10							21356	-013	FASTENER, HOOK	NYLON, WHITE, 1 X 2 LG	A-A-55126 TYPE 2, CLASS 1	N	LL		22		
8											21356	-012	FASTENER, LOOP	NYLON, WHITE, 1 X 7 1/2 LG	A-A-55126 CLASS 1	N	LL		21		
	1										21356	-011	FASTENER, LOOP	NYLON, WHITE, 1/2 X 1.5 LG	A-A-55126 CLASS 1	N	LL		20		
				2							21356	-010	FASTENER, LOOP	NYLON, WHITE, 2 X 6 LG	A-A-55126 CLASS 1	N	LL		19		
					2						21356	-009	FASTENER, LOOP	NYLON, WHITE, 1 X 5 LG	A-A-55126 CLASS 1	N	LL		18		
				1							21356	-008	FASTENER, HOOK	NYLON, WHITE, 1/2 X 1.5 LG	A-A-55126 TYPE 2, CLASS 1	N	LL		17		
1											21356	-007	DIVIDER	NOMEX FABRIC, BLUE 7 5/8 X 21		N	LL		16	5	
					2						21356	-006	STRAP, LOOP	WEBBING, NOMEX, NATURAL, 1 X 5 LG		N	LL		15	2,4	
	1										21356	-005	STRAP, HANDLE	WEBBING, NOMEX, NATURAL, 1 X 15 LG		N	LL		14	2,4	
			1								21356	-004	STRAP, LONG, SIDE	WEBBING, NOMEX, NATURAL, 1 X 39 LG		N	LL		13	2,4	
					1						21356	-003	FLAP, CLOSURE	NOMEX FABRIC, BLUE 4 1/2 X 18 3/8		N	LL		12	5	
						2					21356	-002	SIDEWALL	NOMEX FABRIC, BLUE 7 1/2 X 34 3/4		N	LL		11	5	
					1	1					21356	-001	COVER/LINER, POUCH	NOMEX FABRIC, BLUE 8 1/2 X 28		N	LL		10	5	
							1				21356	-907	DIVIDER ASSY			N	LL		9		
								1			21356	-906	INSIDE STRAP ASSY			N	LL		8		
									1		21356	-905	HANDLE ASSY			N	LL		7		
										2	21356	-904	OUTSIDE STRAP ASSY			N	LL		6		
											21356	-903	FLAP ASSEMBLY, BLUE			N	LL		5		
											21356	-902	LINER ASSEMBLY, BLUE			N	LL		4		
											21356	-901	COVER ASSEMBLY, BLUE			N	LL		3		
											21356	-702	ZIPPER/SIDEWALL ASSEMBLY, BLUE			N	LL		2		
											21356	-701	COVER/LINER ASSEMBLY, BLUE			N	LL		1		
											21356	-301	MEDICAL KIT ASSEMBLY, 6", BLUE			N	TE				

DIMENSIONAL TOLERANCE UNLESS NOTED OTHERWISE 0 ± .1 .000 ± .005 .00 ± .02 ANGULAR ± .5°		SIGNATURES DATE DR. T. MERROW 09/07/16 ENG. J. JOINER 09/07/16 CH. R. STEVENSON 09/08/16 APP. J. LATTIN, SIMS 09/21/16		NATIONAL AERONAUTICS AND SPACE ADMINISTRATION LYNDON B. JOHNSON SPACE CENTER HOUSTON, TEXAS	
SURFACE FINISH IN MICROINCHES RMS UNLESS NOTED OTHERWISE N/A		PROJECT CCTCAP MEDICAL KIT DEVELOPMENT & CERTIFICATION		MEDICAL KIT ASSEMBLY, COMMERCIAL CREW	
NEXT ASSY N/A		DWG FILENAME 46122498		PROJECT CCTCAP MEDICAL KIT DEVELOPMENT & CERTIFICATION	
DRAWING TYPE FLIGHT MEDICAL SUPPLIES		AUTH FAB APP		SIZE CODE ID NO DWG NO REV D 21356 SEG46122498 2	
DATE 9/21/16		SCALE NONE		ORG FMT SHEET SF W02MAY04 1 of 9	

STATUS: Check for DCNs against the drawing.



QTY	UNIT	DESCRIPTION	MATERIAL	SPECIFICATION	FRAC CRIT	TRACE CODE	REF DES	ITEM	FLAG	NOTES
1		21356 -030 STIFFENER, REINFORCEMENT	FIBERGLASS, 2 X 6 LG		N	LL		52	7	
AR		86874 35001 MARKER, PERMANENT, BLACK			N	LL		51		
AR		76381 950-X TAPE, TRANSFER			N	LL		50	3	
AR	AR	00625 SR80SL PEN, SILVER INK			N	LL		49	1	
AR	AR	76381 30-NF ADHESIVE, CONTACT			N	LL		48		
AR	AR	57439 A-A-50195 THREAD, NOMEX, SIZE "E" BONDED, NATURAL			N	LL		47		
		2 4M411 8CFDFL501 #8 SLIDER, COIL ZIPPER			N	LL		46		
		1 4M411 8CF3/4CHAIN501 ZIPPER, #8 COIL, WHITE, 3/4 TAPE, 36 L			N	LL		45	10	
1		21356 SDG46122499-006 STIFFENER, DIVIDER, BTM, 6" KIT			N	LL		44		
1		21356 SDG46122499-005 STIFFENER, DIVIDER, TOP, 6" KIT			N	LL		43		
		4 21356 SDG46122499-004 STIFFENER, SIDE, 6" KIT			N	LL		42		
		2 21356 SDG46122499-003 STIFFENER, END, 6" KIT			N	LL		41		
		1 21356 SDG46122499-002 STIFFENER, SPINE, 6" KIT			N	LL		40		
		2 21356 SDG46122499-001 STIFFENER, FRONT/BACK, 6" KIT			N	LL		39		
		4 21356 -029 FASTENER, HOOK	NYLON, WHITE, 1 X 2 1/4 LG	A-A-55126 TYPE 2, CLASS 1	N	LL		38		
		1 21356 -028 FASTENER, LOOP	NYLON, WHITE, 1 X 1 3/4 LG	A-A-55126 CLASS 1	N	LL		37		
		2 21356 -027 FASTENER, HOOK	NYLON, WHITE, 1 X 1 3/4 LG	A-A-55126 TYPE 2, CLASS 1	N	LL		36		
		2 21356 -026 ZIPPER END	WEBBING, NOMEX, NATURAL, 1 3/4 X 2 1/8 LG		N	LL		35	2,12	
		4 21356 -025 STIFFENER, REINFORCEMENT	FIBERGLASS, 2 X 3 LG		N	LL		34	7	
		1 21356 -024 WINDOW, POCKET, SPINE	TEFLON, FEP 500A FILM, CLEAR, 2 X 10 LG	ASTM-D-3368	N	LL		33		
	1	2 21356 -023 WINDOW, POCKET	TEFLON, FEP 500A FILM, CLEAR, 1 X 6 LG	ASTM-D-3368	N	LL		32		
		2 21356 -022 WINDOW, POCKET, FLAP	TEFLON, FEP 500A FILM, CLEAR, 1 X 4 LG	ASTM-D-3368	N	LL		31		
		2 21356 -021 WINDOW, POCKET, SMALL	TEFLON, FEP 500A FILM, CLEAR, 2 1/2 X 10 LG	ASTM-D-3368	N	LL		30		
1		21356 -020 STRAP, INSIDE	WEBBING, NOMEX, NATURAL, 1/2 X 20 1/4 LG		N	LL		29	2,6	
		2 21356 -019 STRAP, LANYARD	WEBBING, NOMEX, NATURAL, 1/2 X 8 LG		N	LL		28	2,6	
		1 2 21356 -018 FASTENER, LOOP	NYLON, WHITE, 1 X 2 LG	A-A-55126 CLASS 1	N	LL		27		
			DELETED							26

SIZE	CAGE CODE	DWG NO	SCALE	ORG	FMT	W02MAY04	SHEET	2 of 9
D	21356	SEG46122498	1:2	SF				

8

7

6

5

4

3

2

1

D

D

C

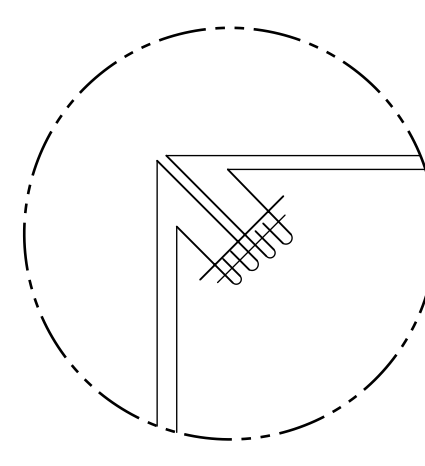
C

B

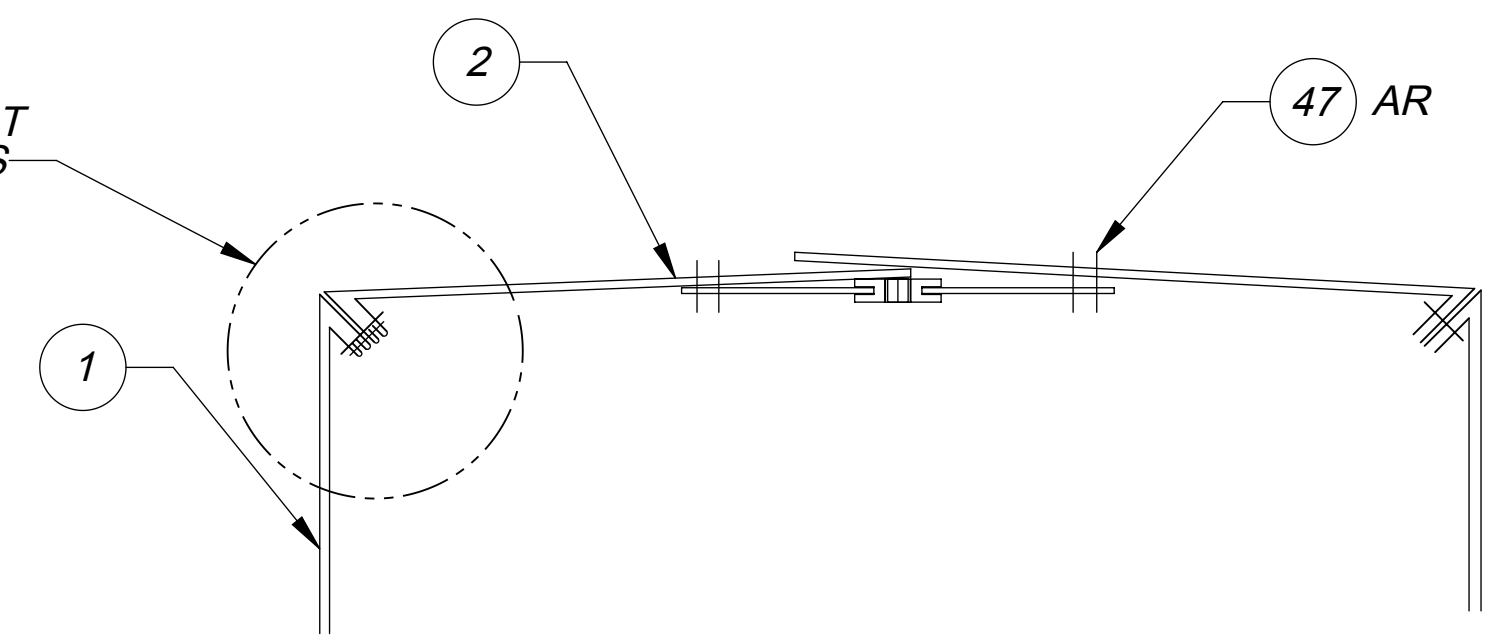
B

A

A

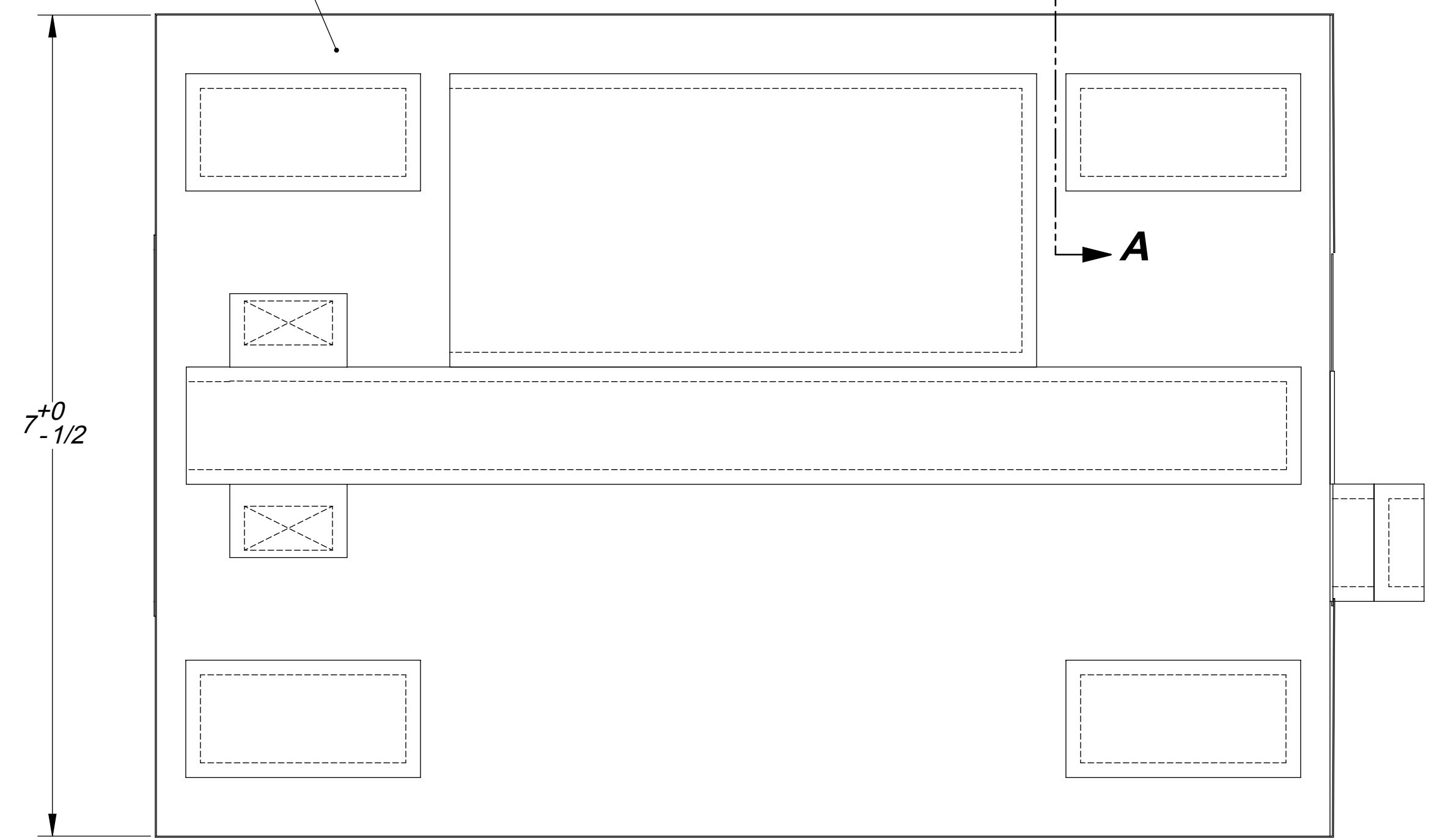
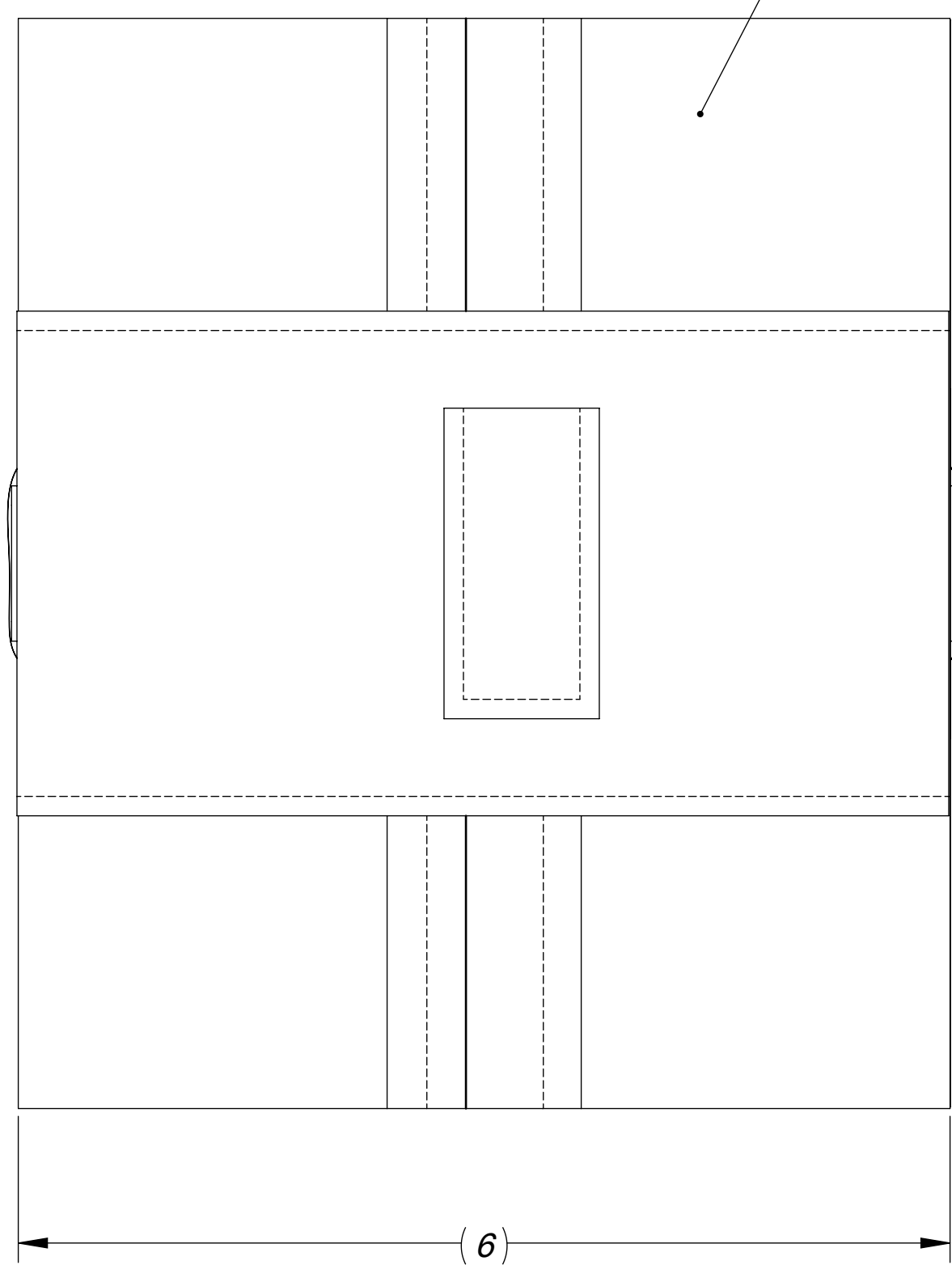
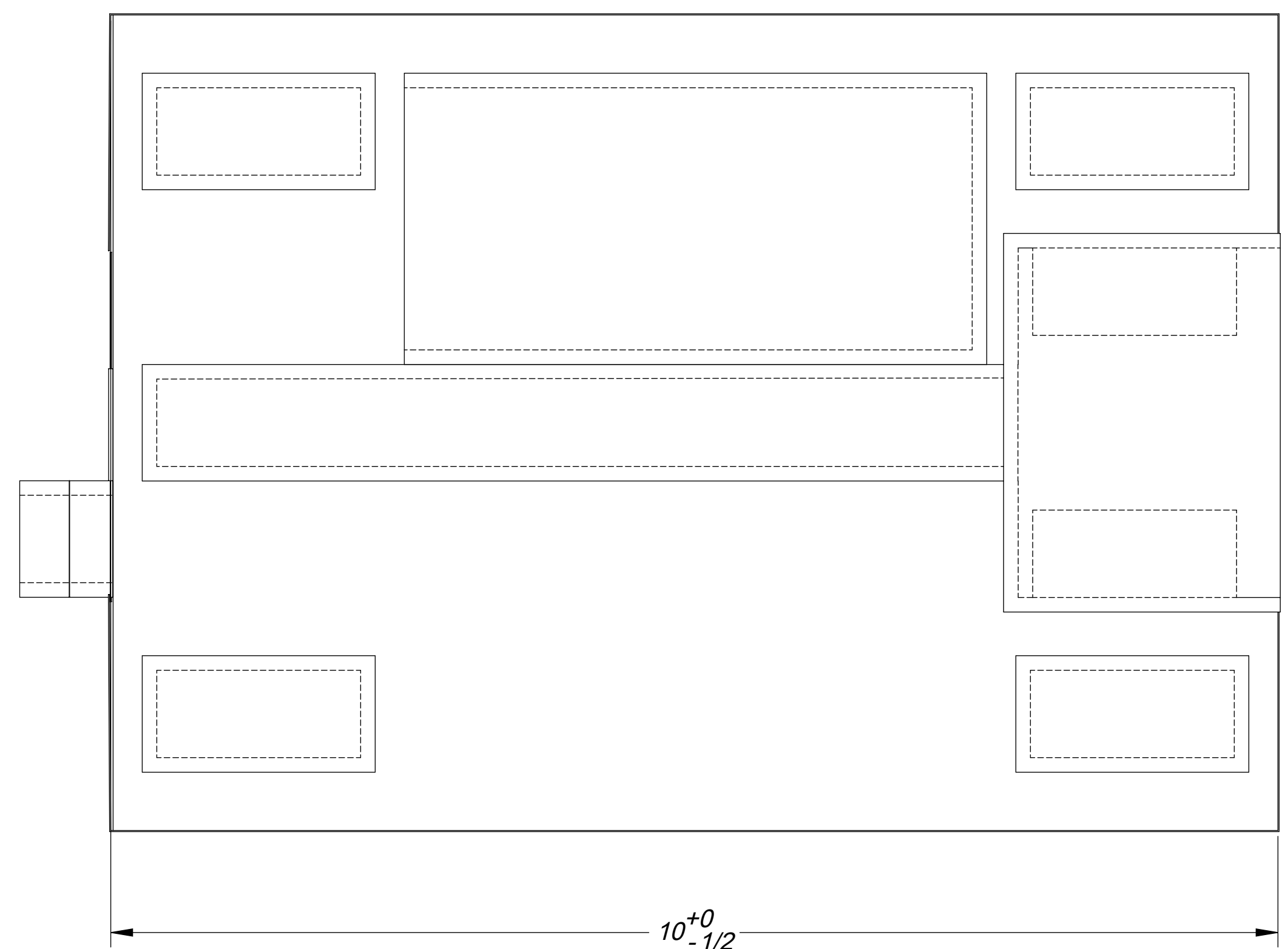


SEE DETAIL T-T
TYP CORNERS



2 REF

REF 1



-301

8

7

6

5

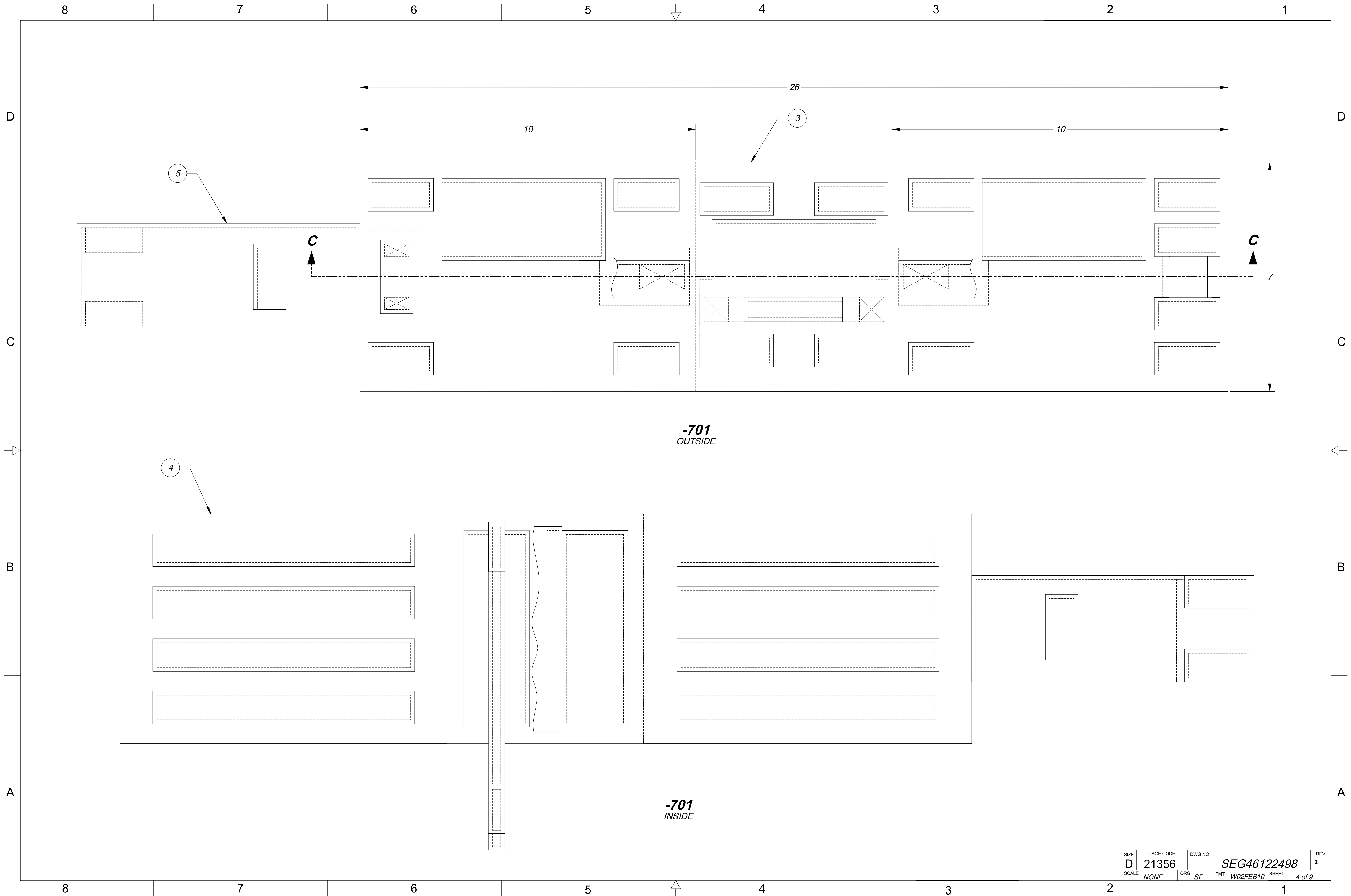
4

3

2

1

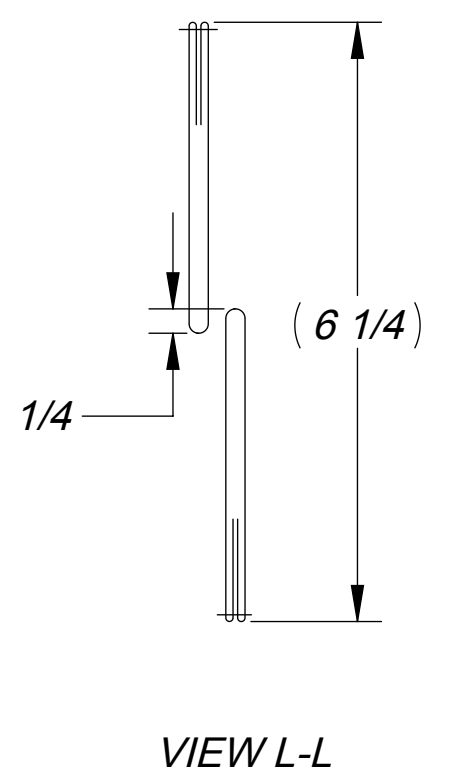
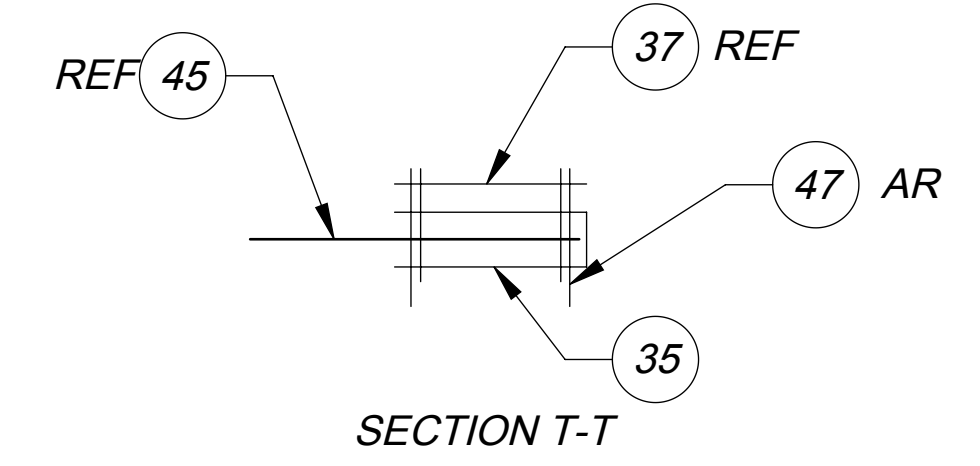
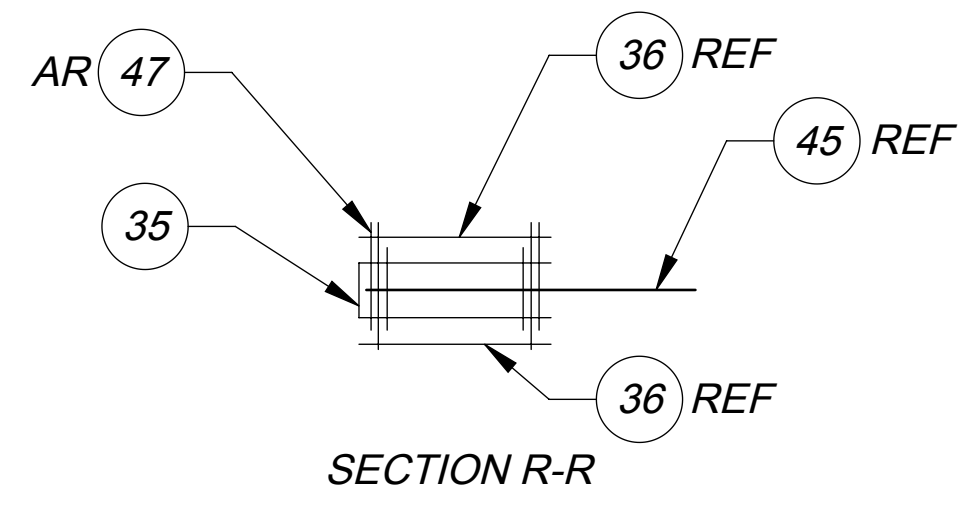
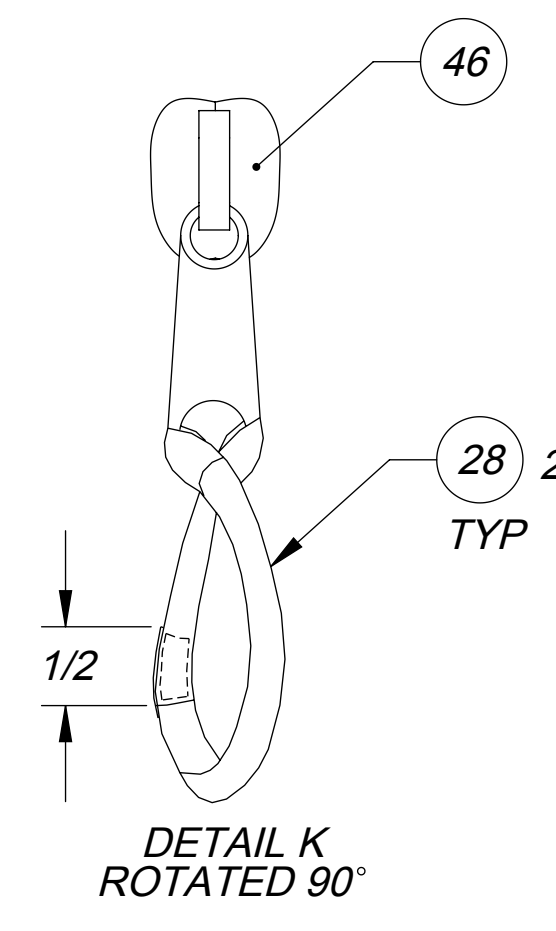
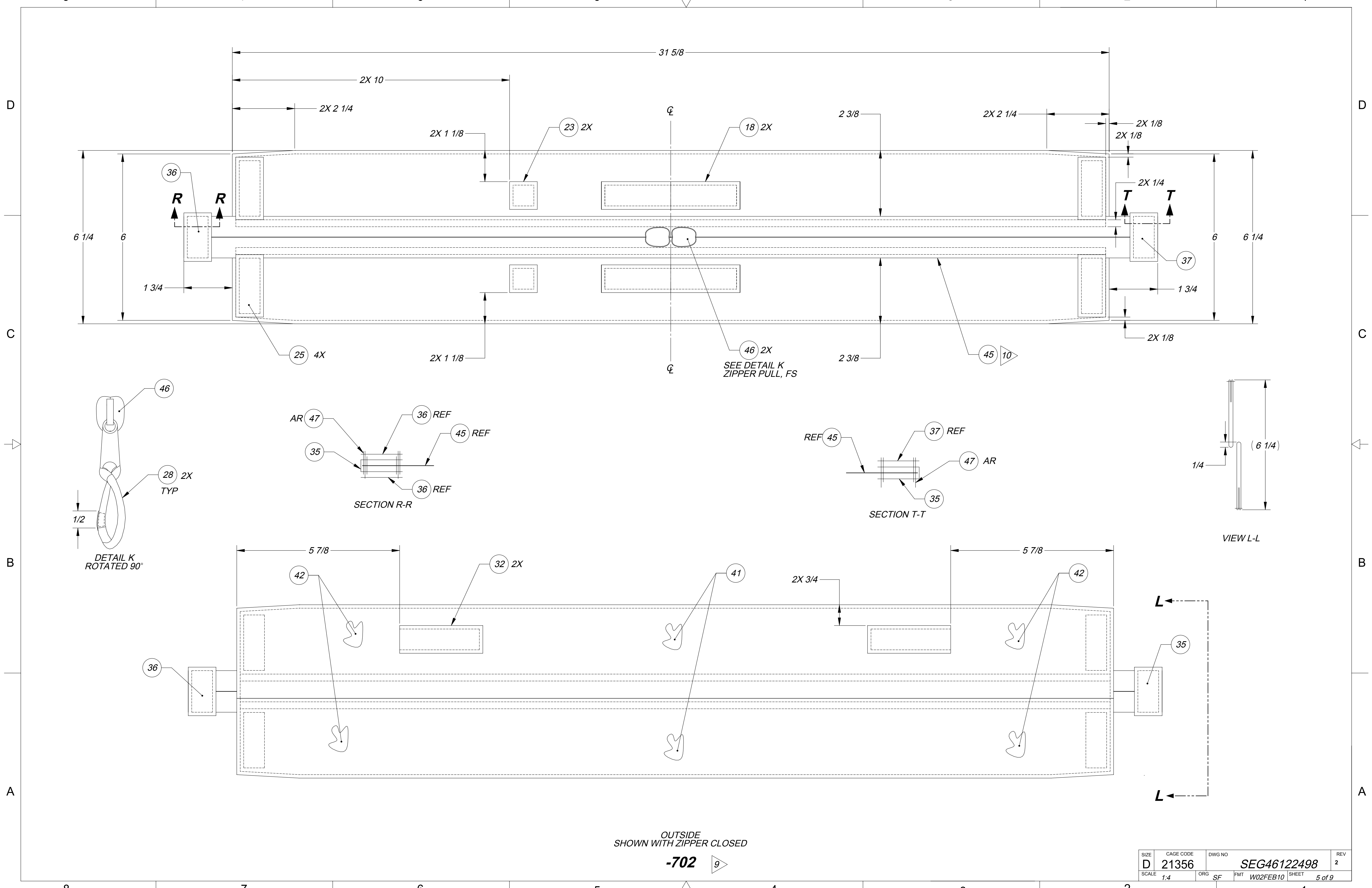
SIZE D	CAGE CODE 21356	DWG NO SEG46122498	REV 2
SCALE 1:1	ORG SF	FMT W02FEB10	SHEET 3 of 9



-701
OUTSIDE

-701
INSIDE

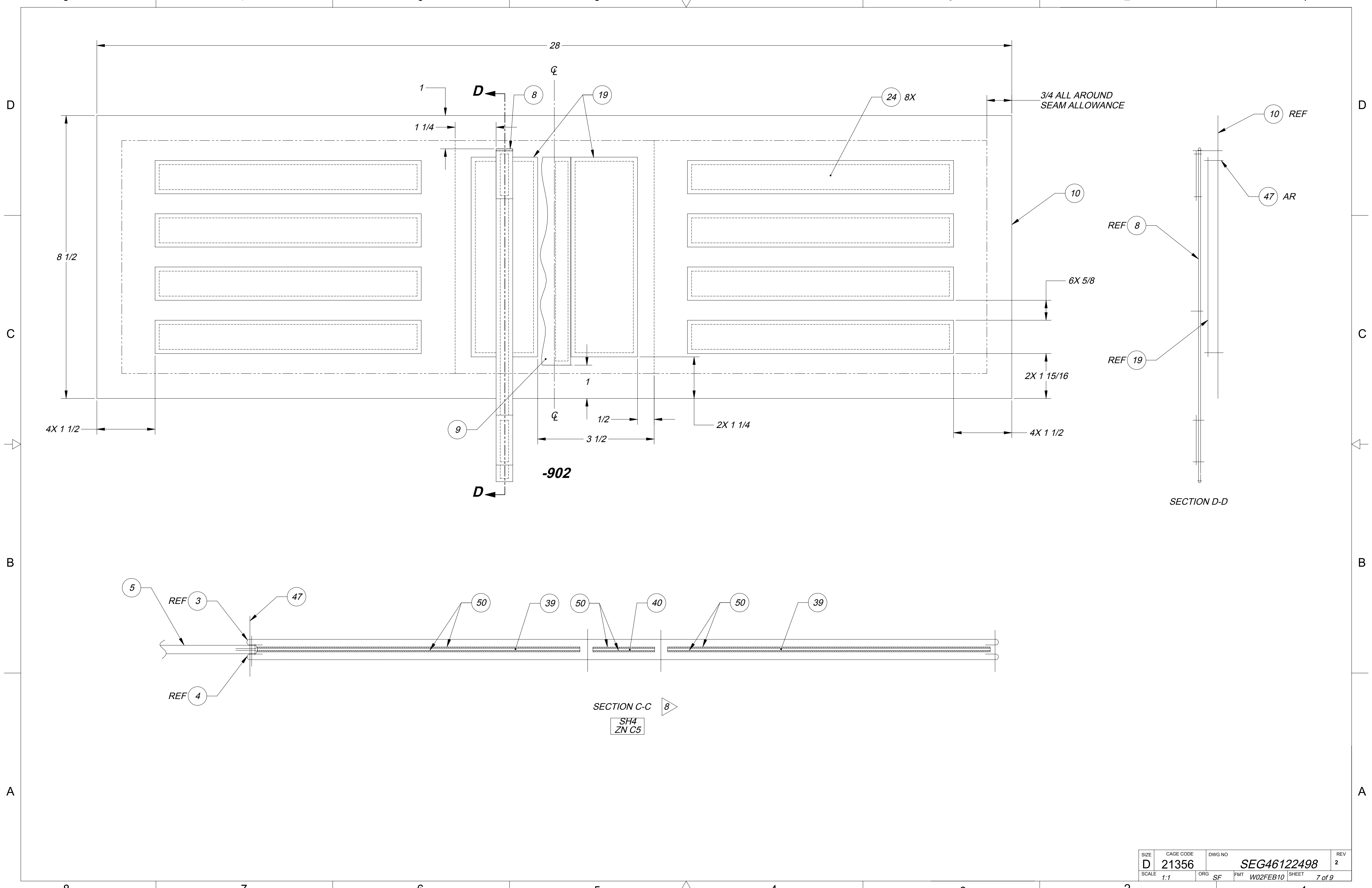
SIZE	CAGE CODE	DWG NO	REV
D	21356	SEG46122498	2
SCALE	ORG	FMT	SHEET
NONE	SF	W02FEB10	4 of 9



OUTSIDE
SHOWN WITH ZIPPER CLOSED

-702 9

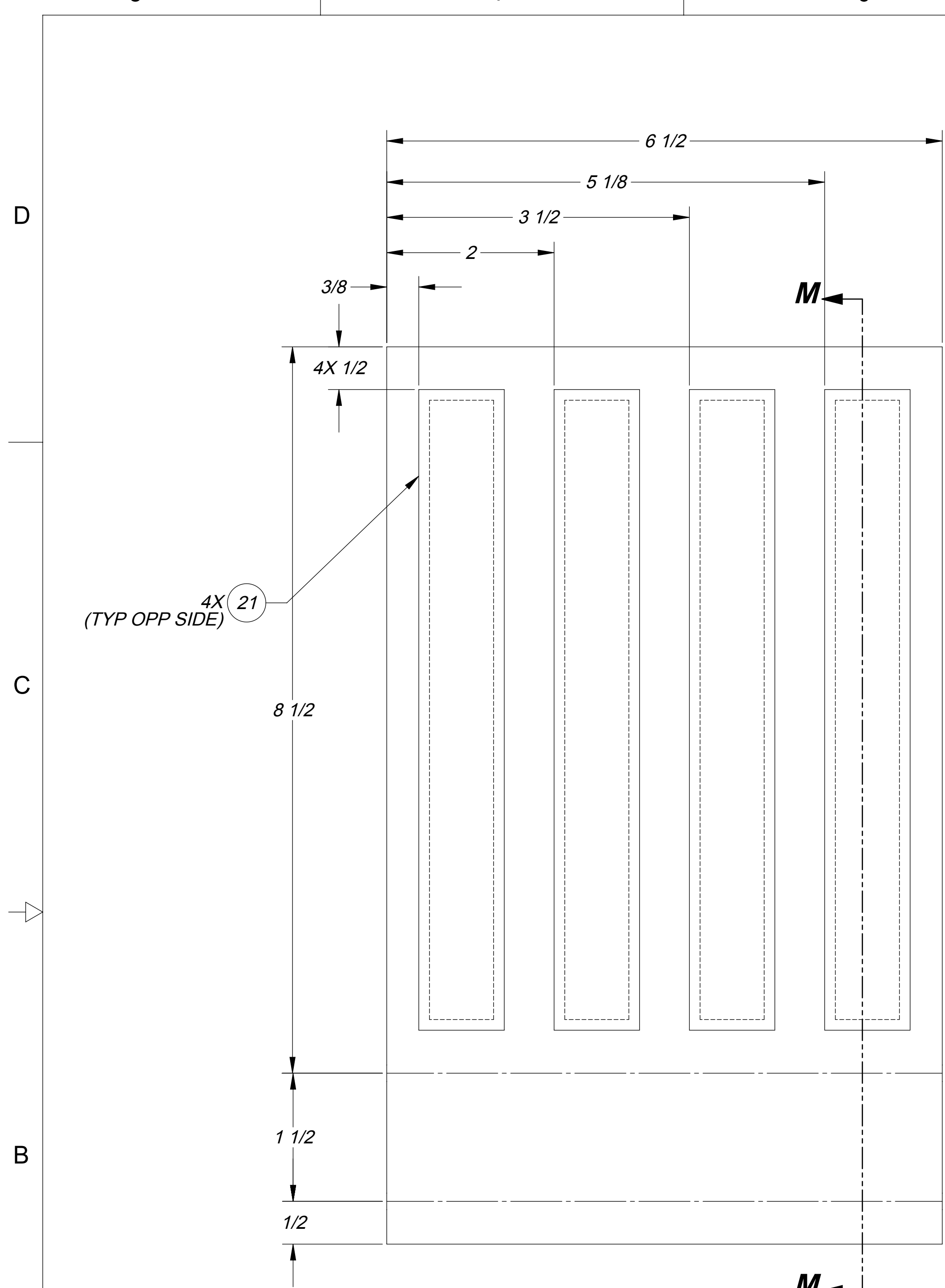
SIZE D	CAGE CODE 21356	DWG NO SEG46122498	REV 2
SCALE 1:4	ORG SF	FMT W02FEB10	SHEET 5 of 9



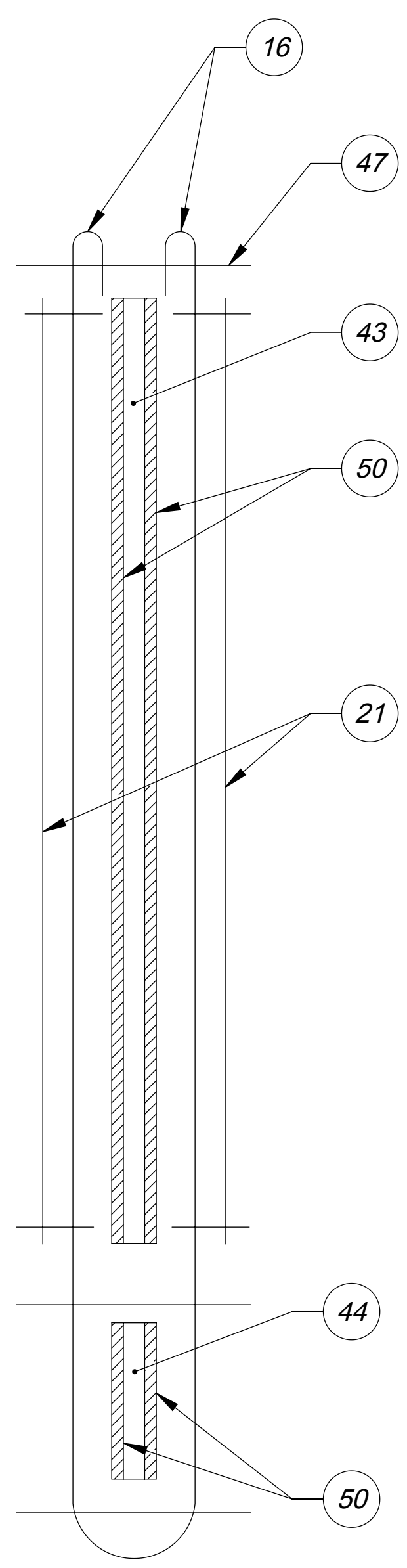
SECTION D-D

SECTION C-C
 SH4
 ZN C5

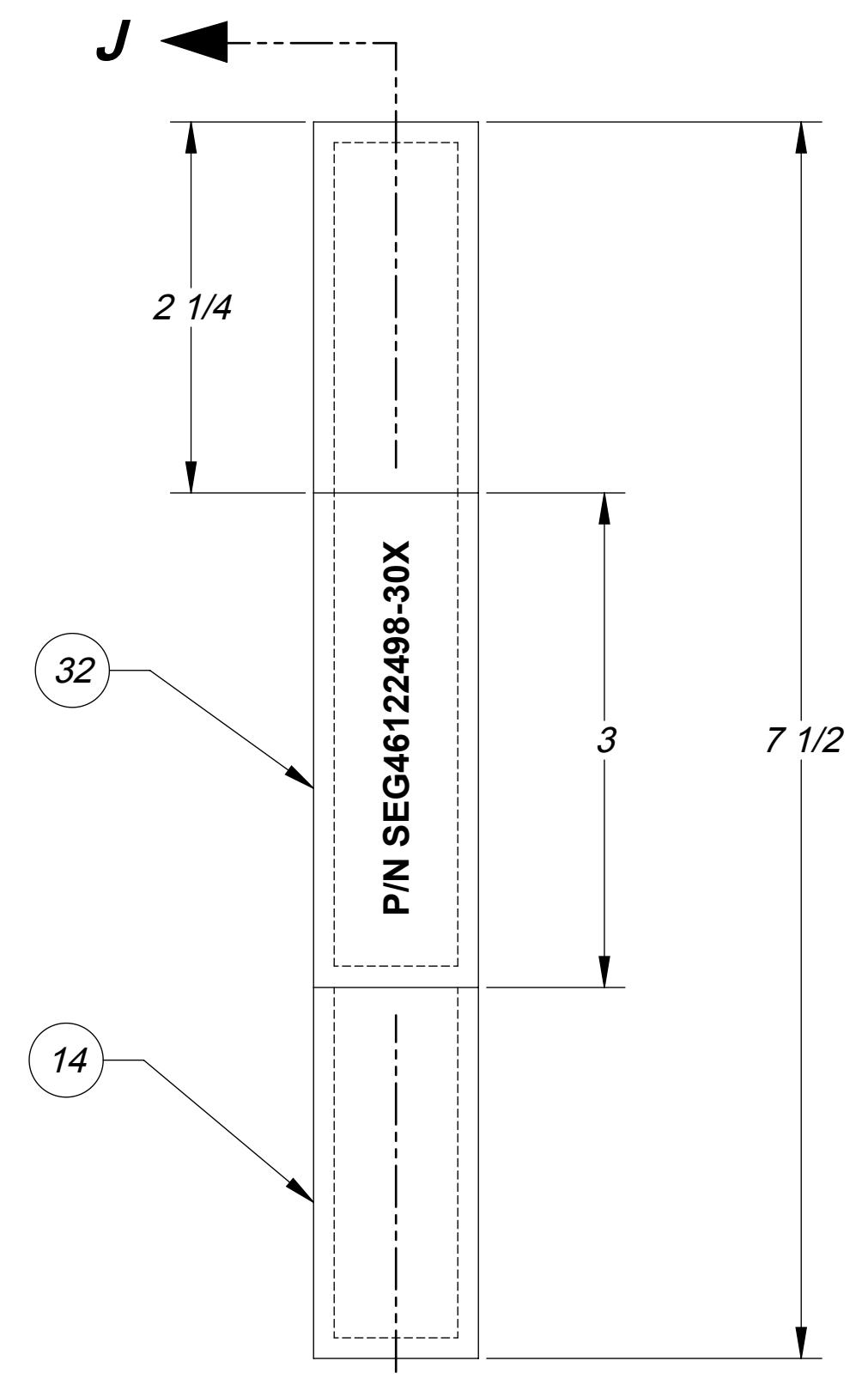
SIZE D	CAGE CODE 21356	DWG NO SEG46122498	REV 2
SCALE 1:1	ORG SF	FMT W02FEB10	SHEET 7 of 9



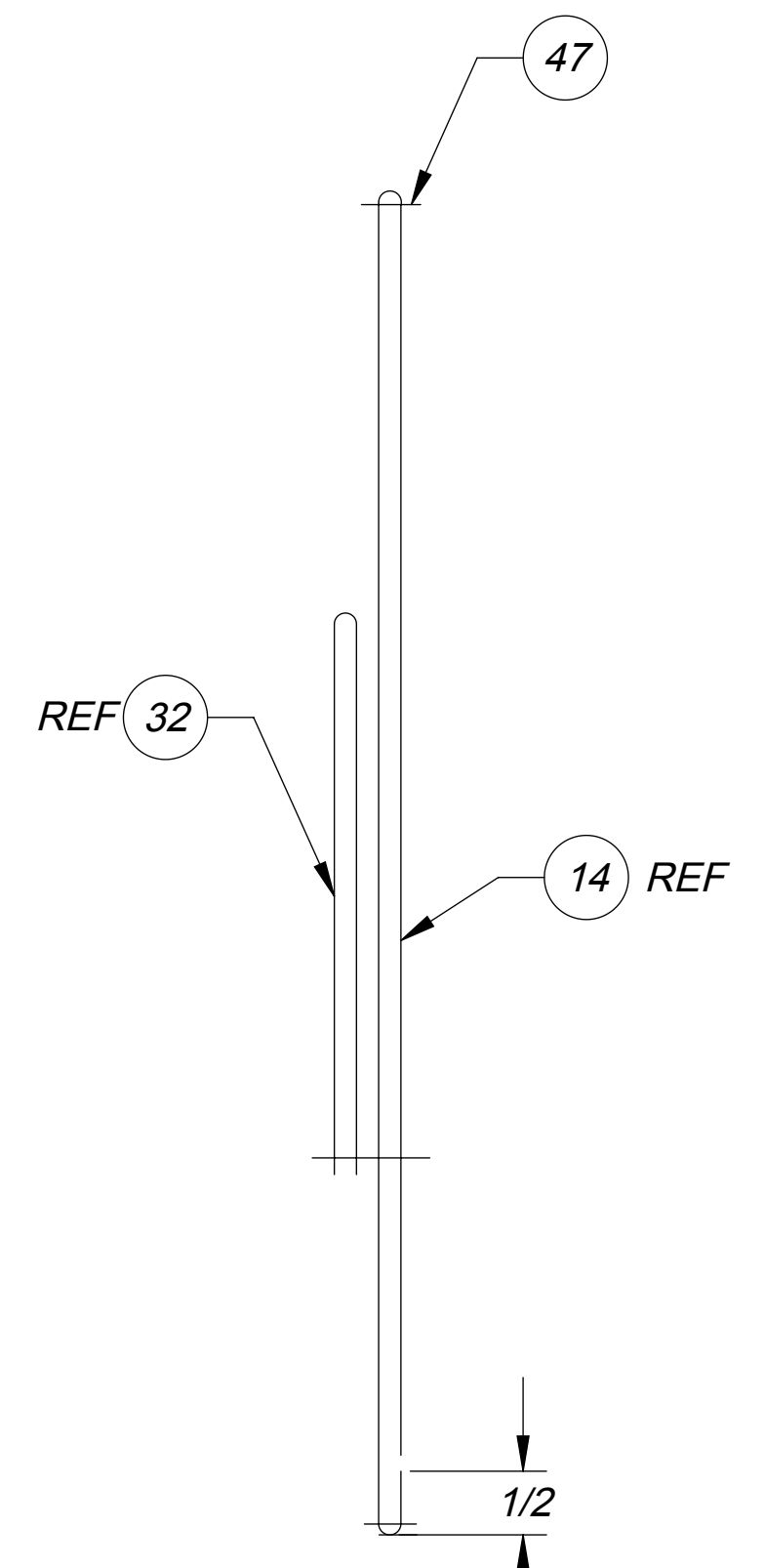
-907



SECTION M-M



-905



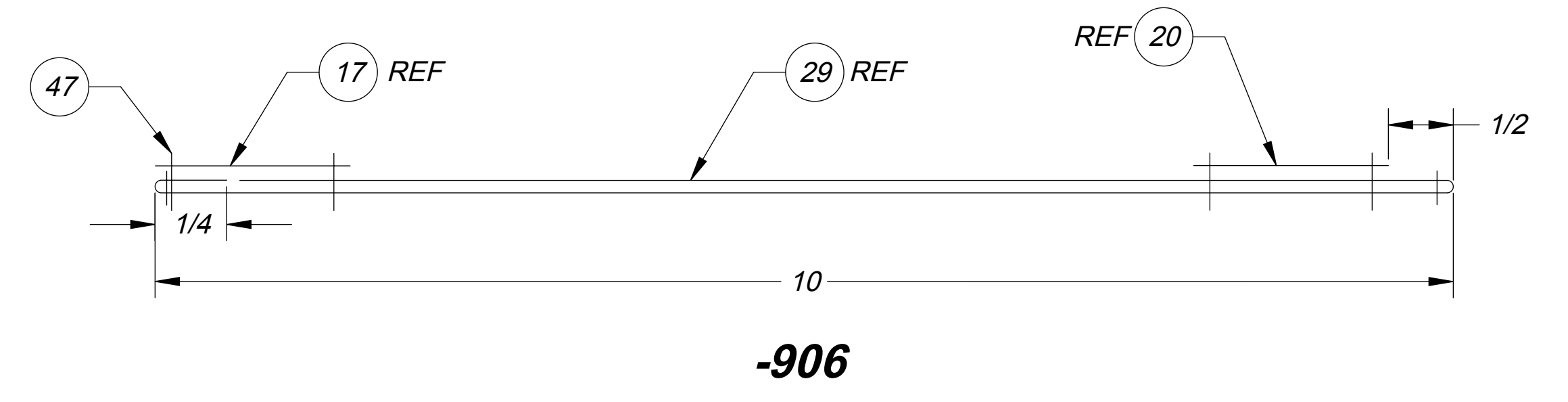
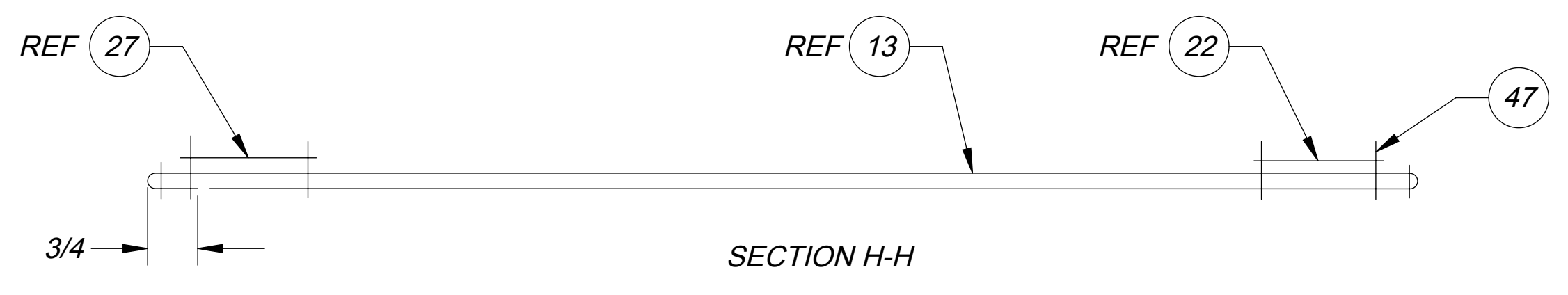
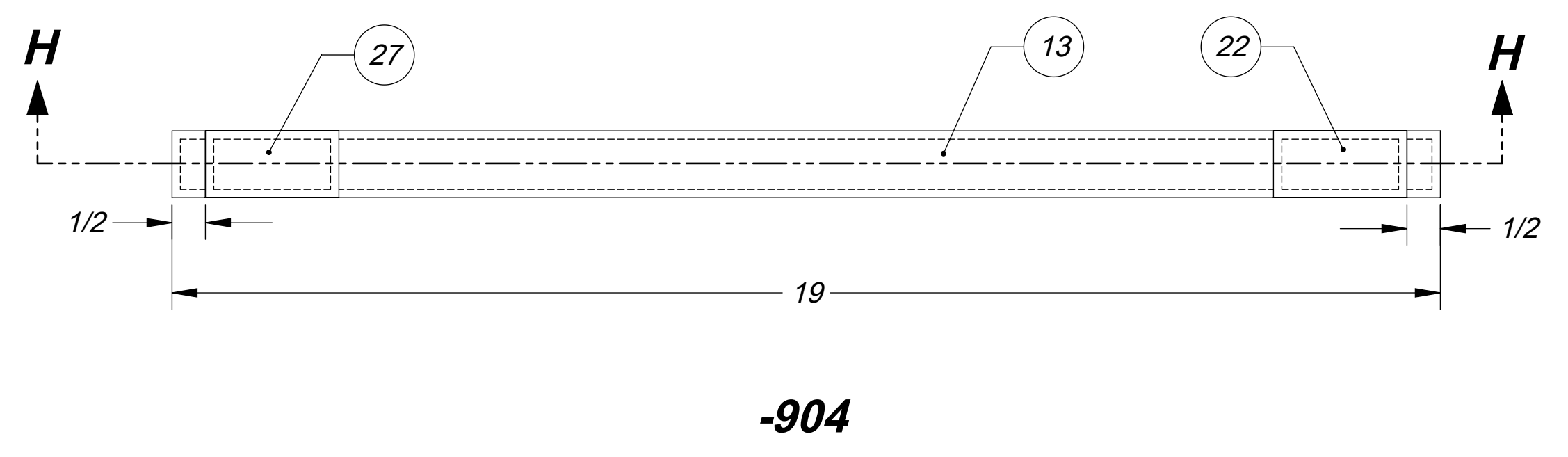
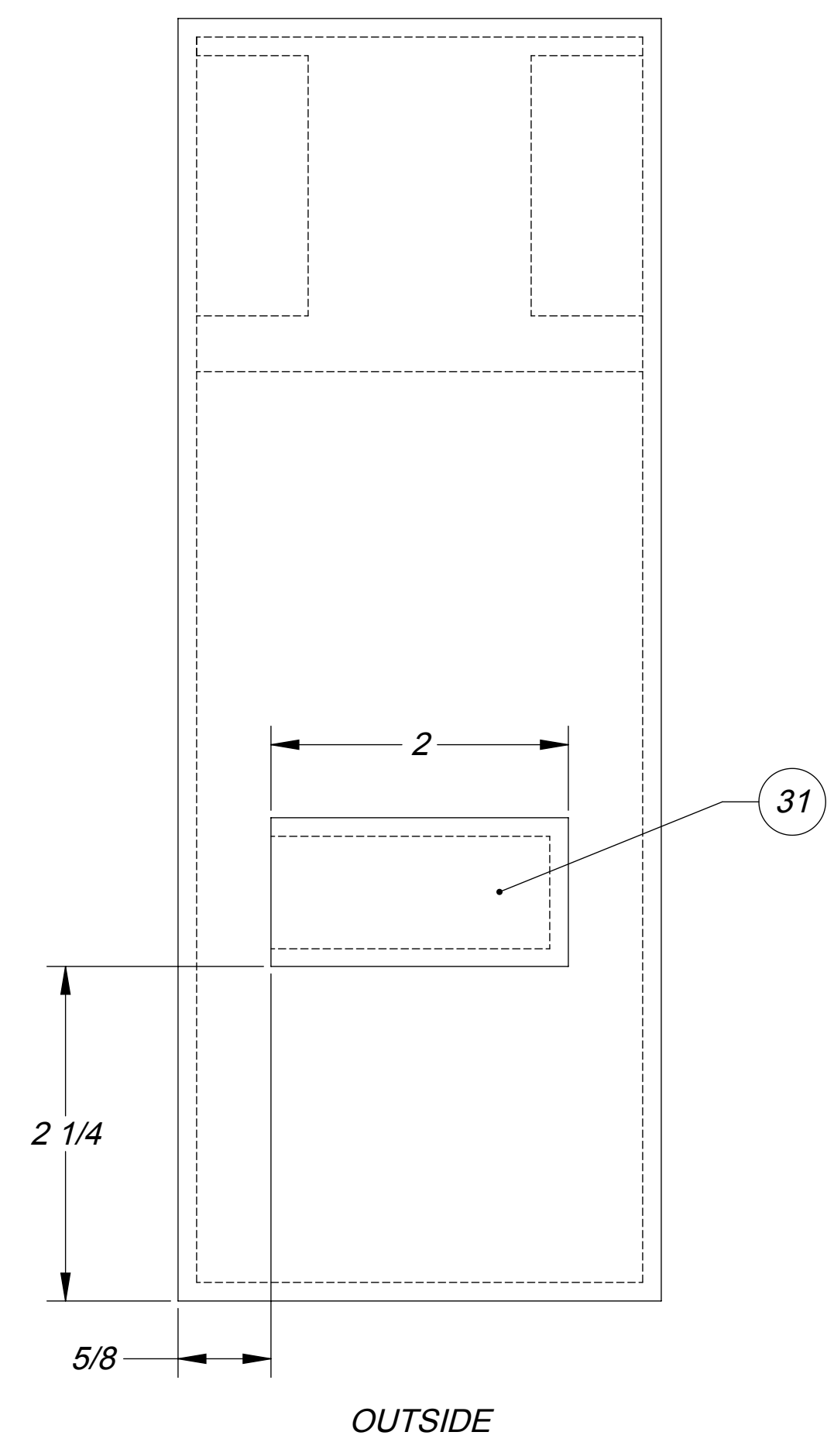
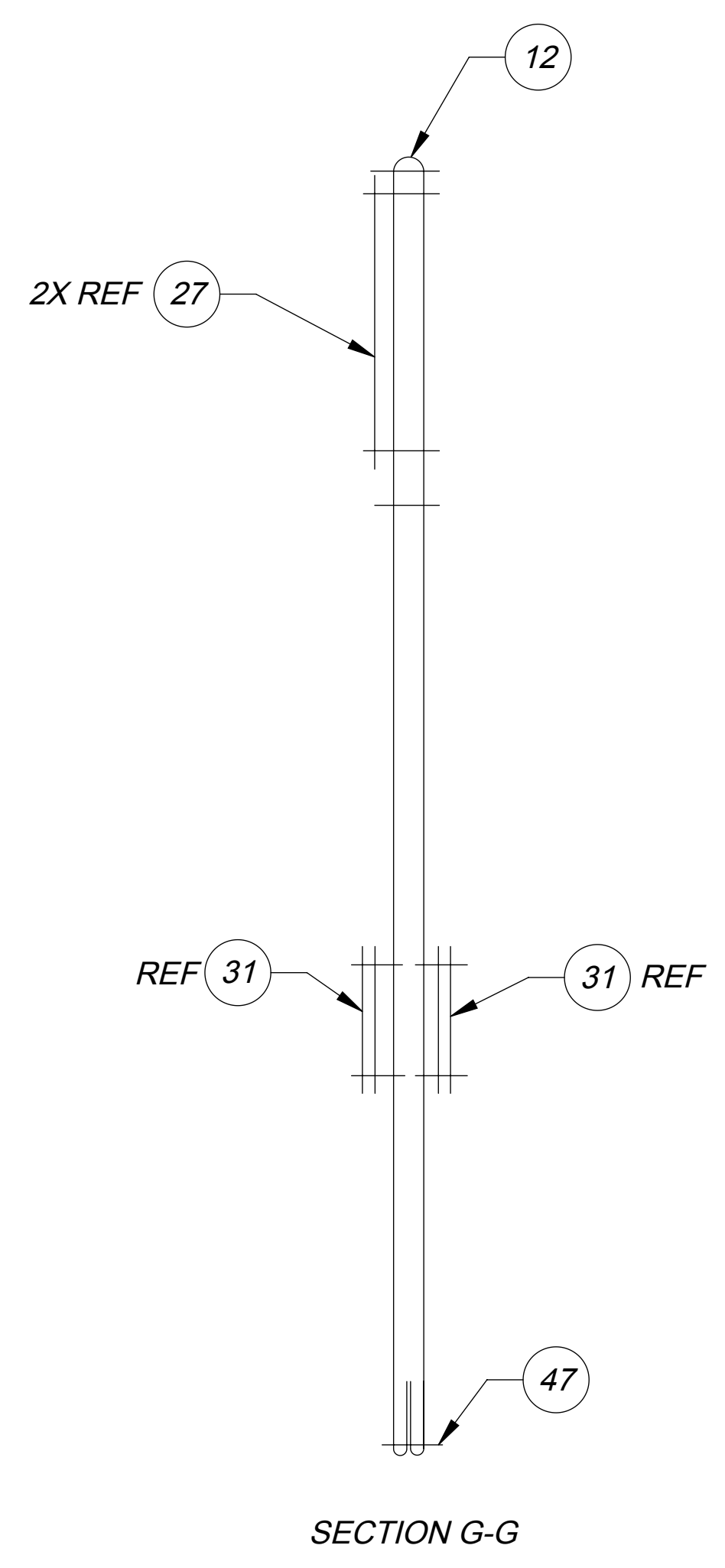
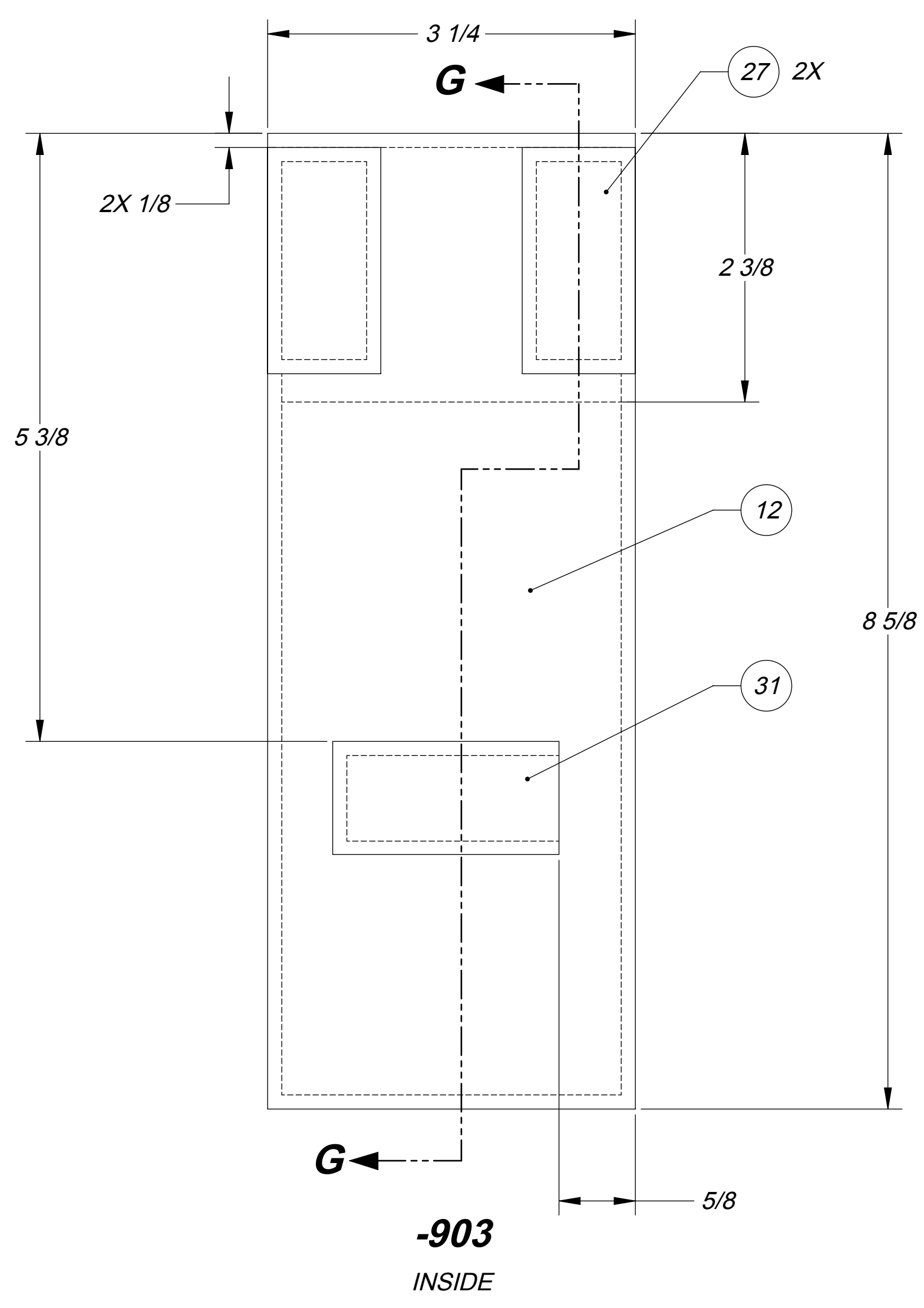
SECTION J-J

SIZE D	CAGE CODE 21356	DWG NO SEG46122498	REV 2
SCALE 1:1	ORG SF	FMT W02FEB10	SHEET 8 of 9

8 7 6 5 4 3 2 1

D
C
B
A

D
C
B
A



SIZE	CAGE CODE	DWG NO	REV
D	21356	SEG46122498	2
SCALE	ORG	FMT	SHEET
1:2	SF	W02FEB10	9 of 9

8 7 6 5 4 3 2 1