
SPORT

The Scintillation Prediction Observations Research Task

James Spann¹, Charles Swenson², Otavio Durão³, Luis Loures⁴, Rod Heelis⁵, Rebecca Bishop⁶, Guan Le⁷, Mangalathayil Abdu⁴, Linda Krause¹, Clezio Denardin³, Lidia Shibuya⁴

¹ NASA/MSFC, ² USU, ³ INPE, ⁴ ITA, ⁵ UTD, ⁶ Aerospace, ⁷ NASA/GSFC



SPORT

- **Joint United States / Brazil Science Mission Concept**

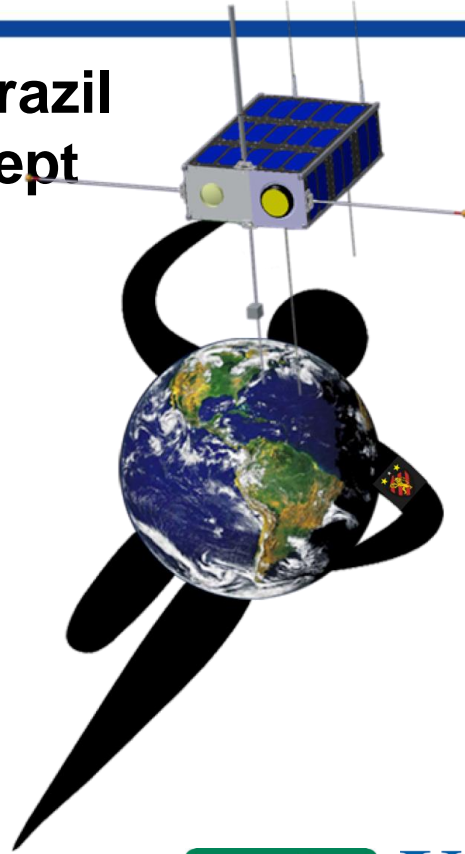
- **United States**

- Science Instruments

- **Brazil**

- Spacecraft

- Operations

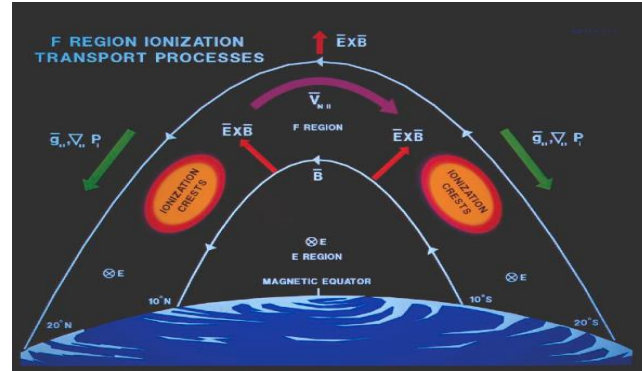


Joint Science Data Analysis



Science

- The equatorial ionization anomalies



Bela Fejer, The Equatorial Ionosphere: A Tutorial
CEDAR Meeting, Seattle Washington, 2015

- Plasma Bubbles

GUVI (Same Local Time, Different Longitudes)

Why do bubbles form and sometimes not at Different Longitudes?



Kil, Hyosub, et al. "Coincident equatorial bubble detection by TIMED/GUVI and ROCSAT-1." Geophysical research letters 31.3 (2004).



AEROSPACE



The University of Alabama in Huntsville

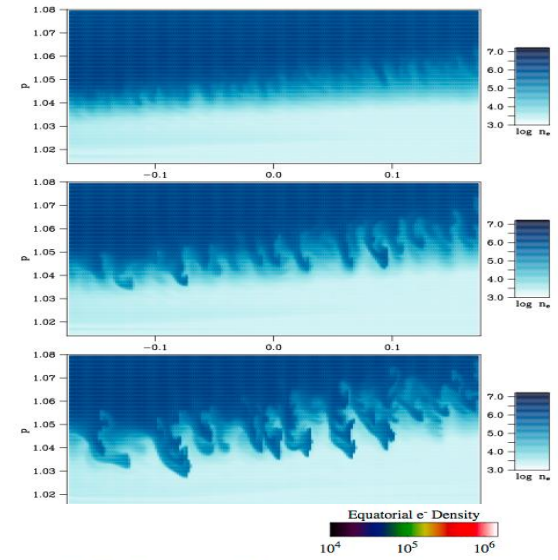
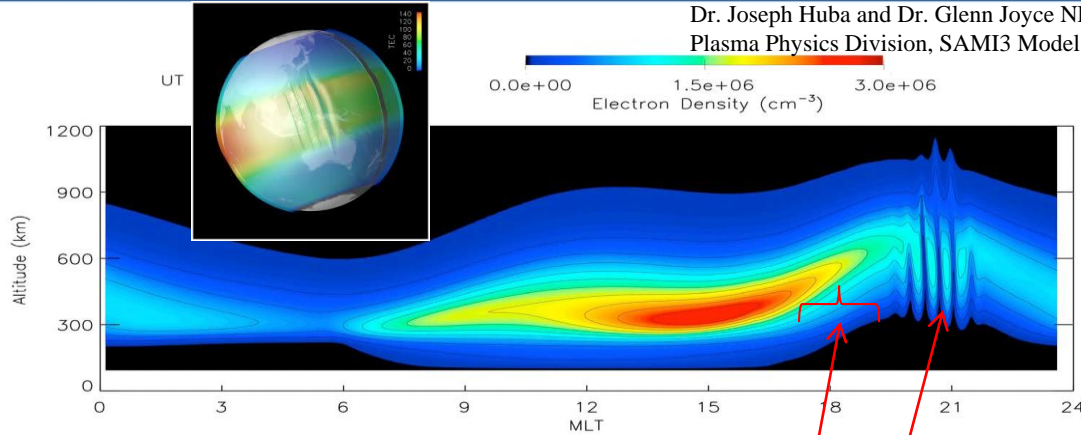


Utah State University



Plasma Bubbles

About 1.5 Hours to form a bubble

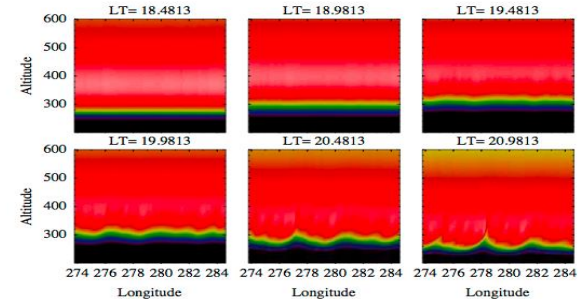


What is the state of the ionosphere here?

That leads to bubbles here ?

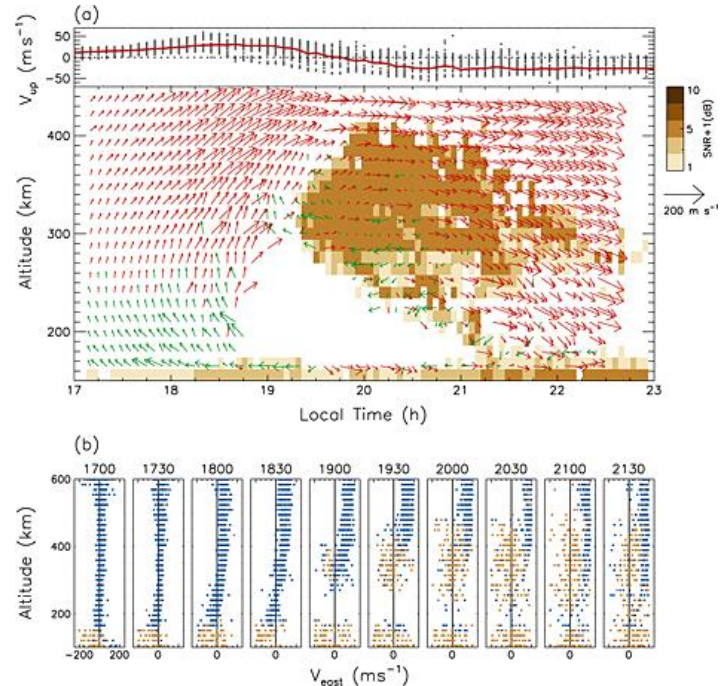
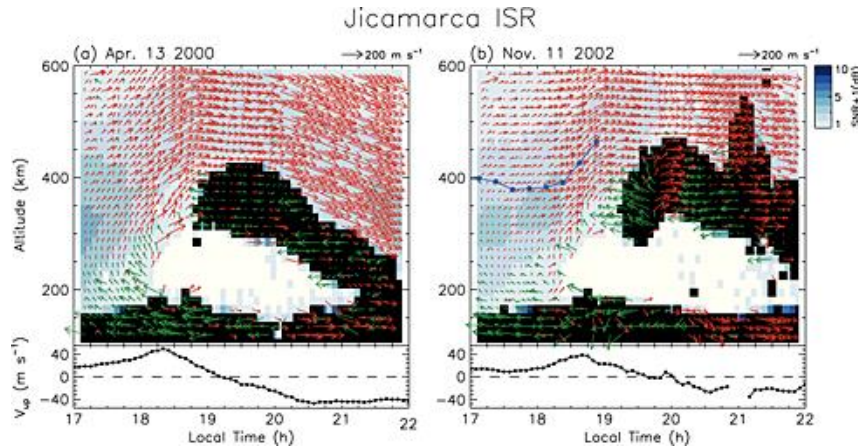
When bottom side seeding perturbations seem to always be present

Retterer, J. M., and P. Roddy. "Faith in a seed: on the origins of equatorial plasma bubbles." *Annales Geophysicae*. Vol. 32. No. 5. Copernicus GmbH, 2014.



Motion of Ionosphere (From Radar)

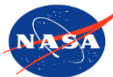
Morphology of the post-sunset vortex in the equatorial ionospheric plasma drift



Geophysical Research Letters

Volume 42, Issue 1, pages 9-14, 8 JAN 2015 DOI: 10.1002/2014GL062019

<http://onlinelibrary.wiley.com/doi/10.1002/2014GL062019/full#grl52441-fig-0001>



The University of Alabama in Huntsville

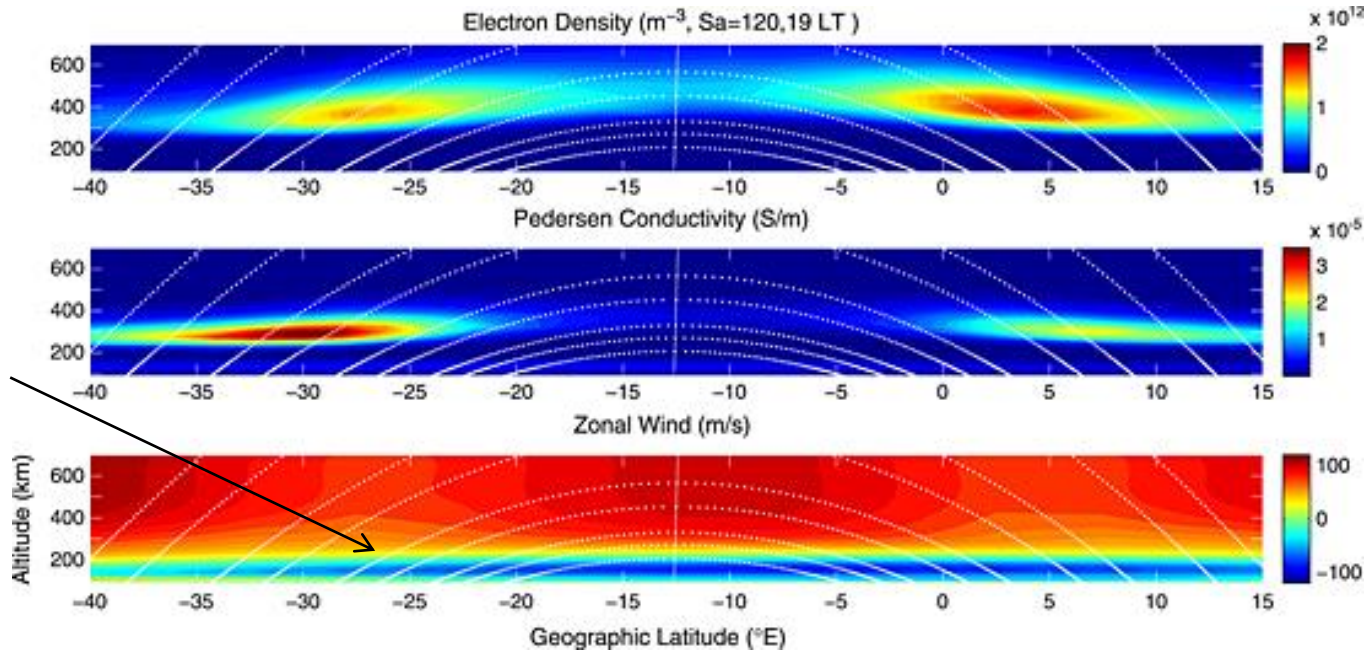


UtahStateUniversity



Neutral Winds and Conductivities

The importance of winds in different regions to triggering EPB particularly wind shears on the bottom of the ionosphere

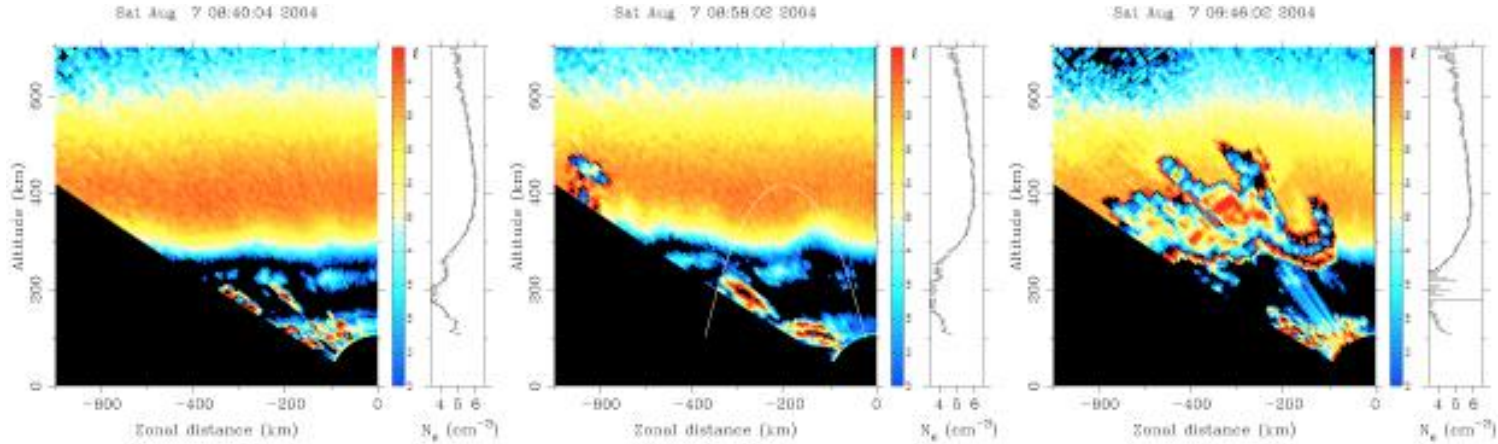


[Electrodynamics of the equatorial evening ionosphere: 1. Importance of winds in different regions](#)

Authors A. D. Richmond, T.-W. Fang, A. Maute First Published: 7 March 2015 Vol: 120, Pages: 2118–2132 DOI: 10.1002/2014JA020934 <http://onlinelibrary.wiley.com/doi/10.1002/2014JA020934/full#jgra51625-fig-0001>



Bubbles Lead to Scintillations



David Hysell Altair Observations

Not all plasma bubble depletions are associated with scintillations?

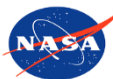
Old Bubbles?

New Bubbles?



Science Goals

- 1) What is the state of the ionosphere that gives rise to the growth of plasma bubbles that extend into and above the F-peak at different longitudes?
- 2) How are plasma irregularities at satellite altitudes related to the radio scintillations observed passing through these regions?



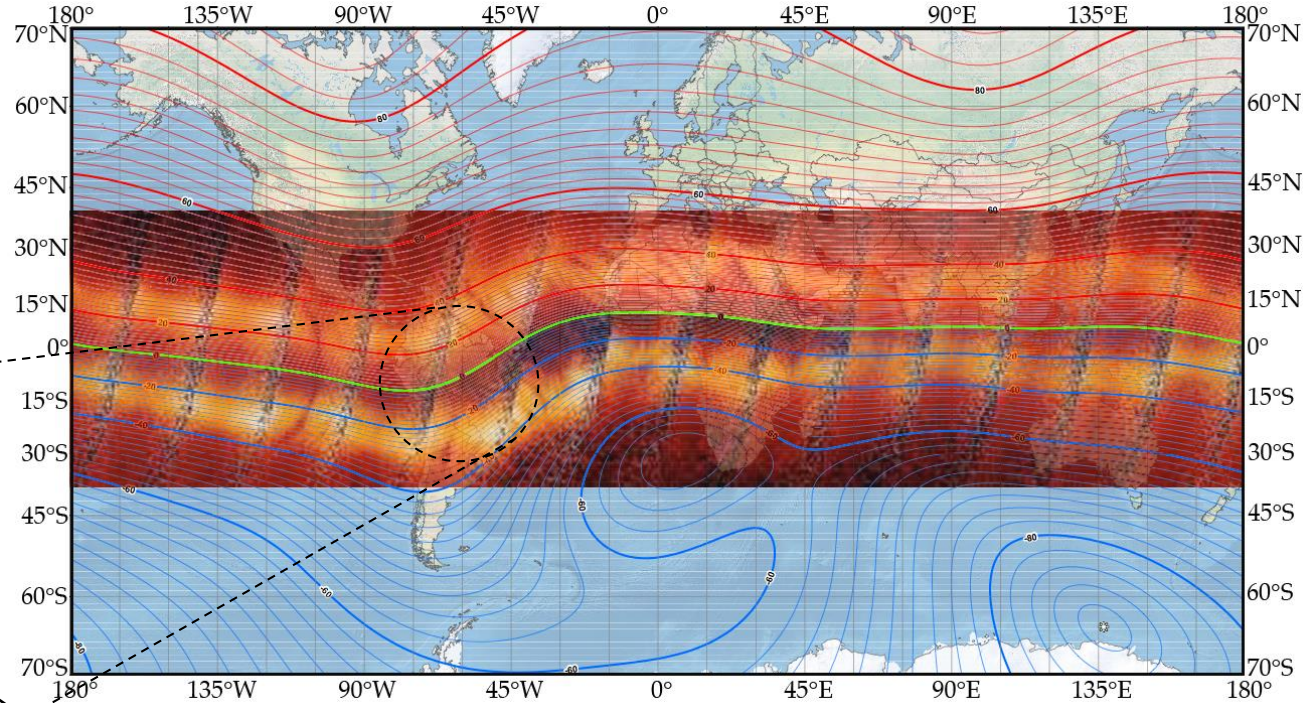
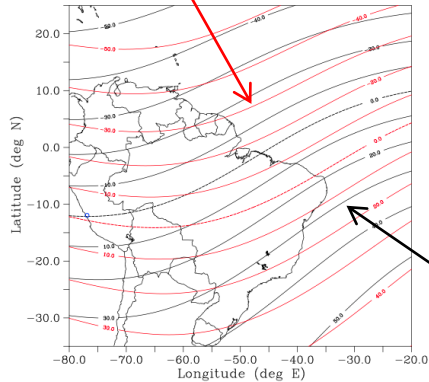
Utah State University



Magnetic Field

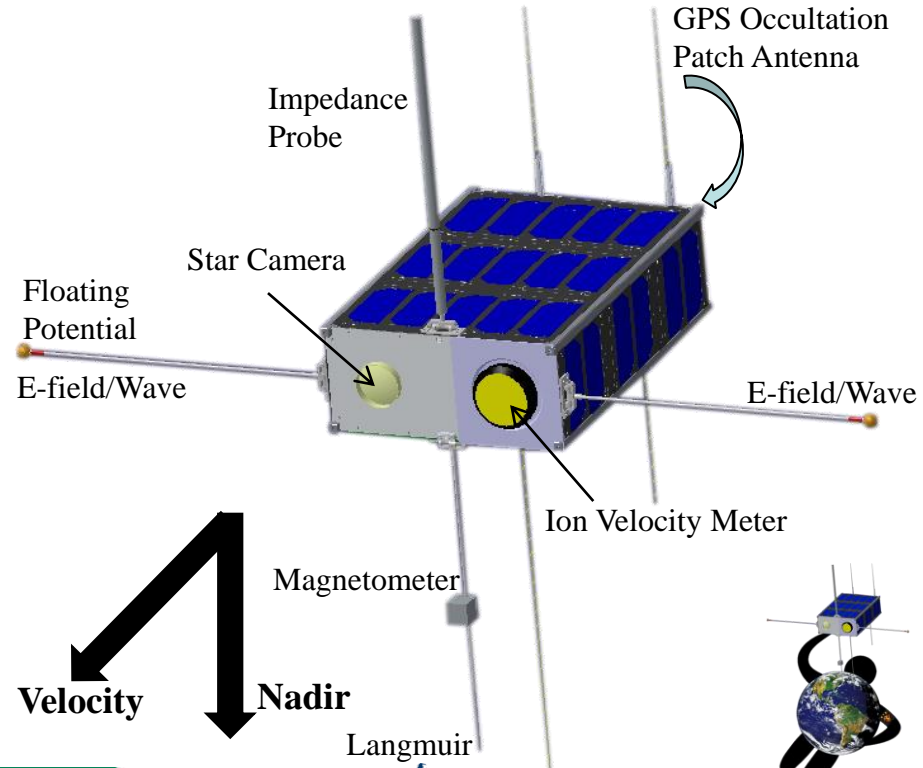
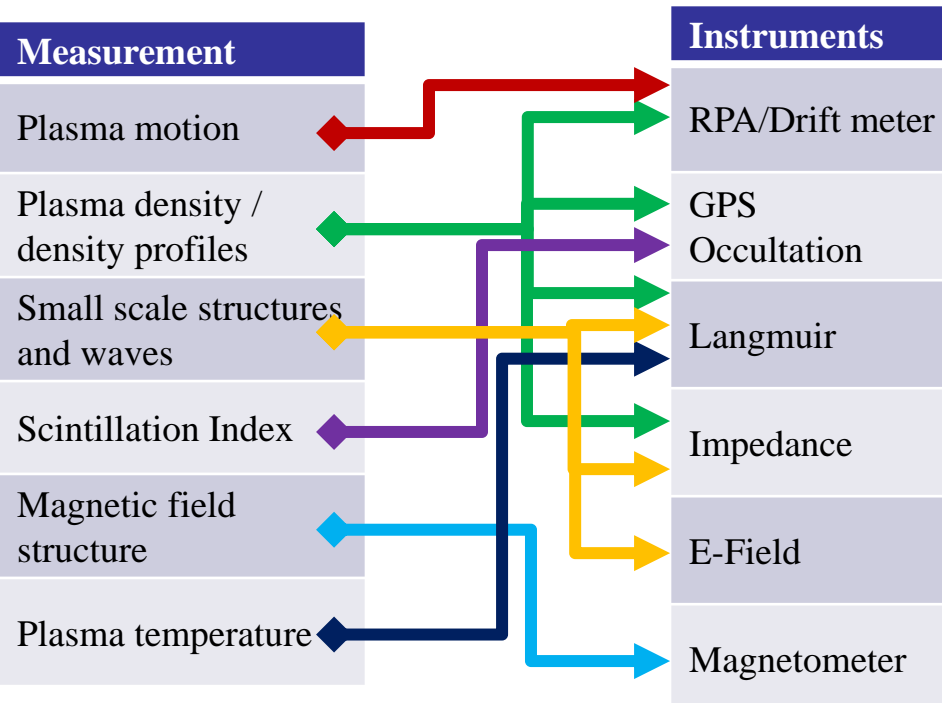
Most ground/radar observations come from the American sector of unique magnetic geometry

IRGF 1960

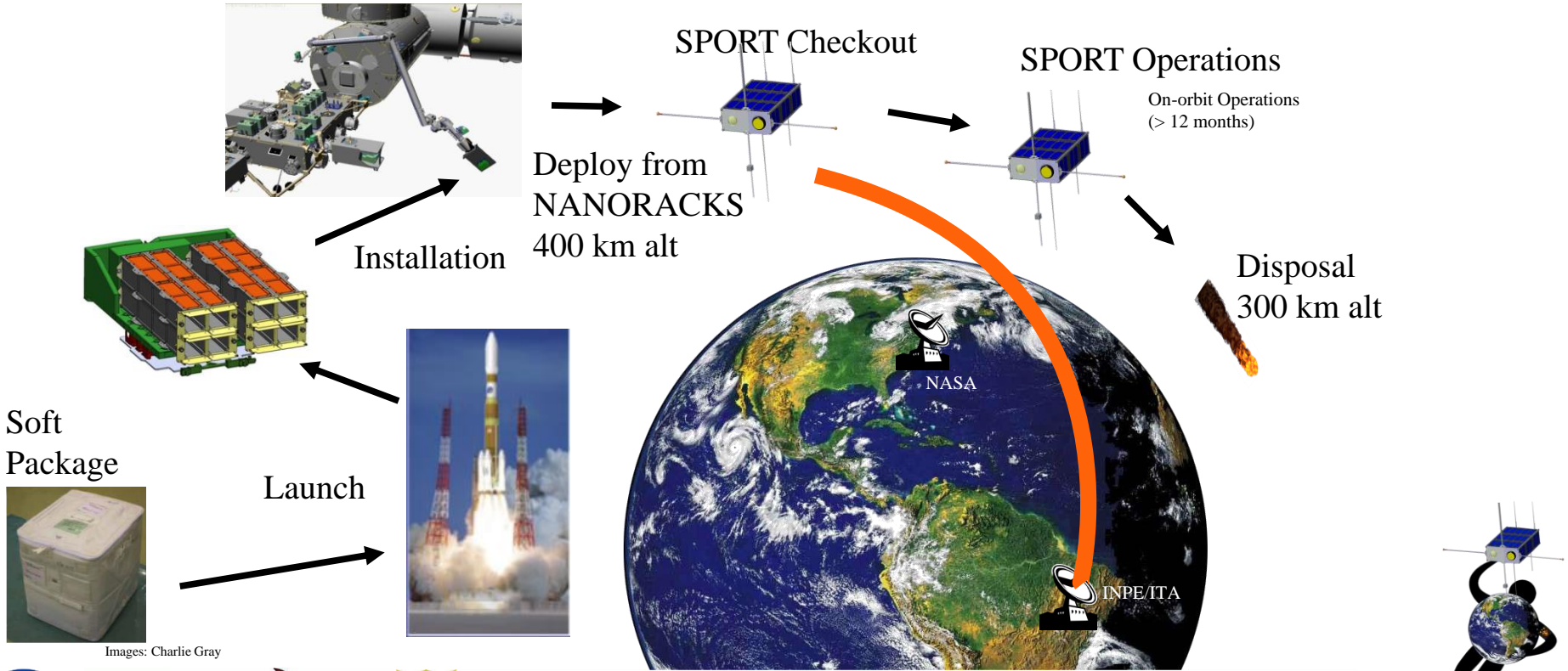


IRGF 2010

Measurement and Instrumentation

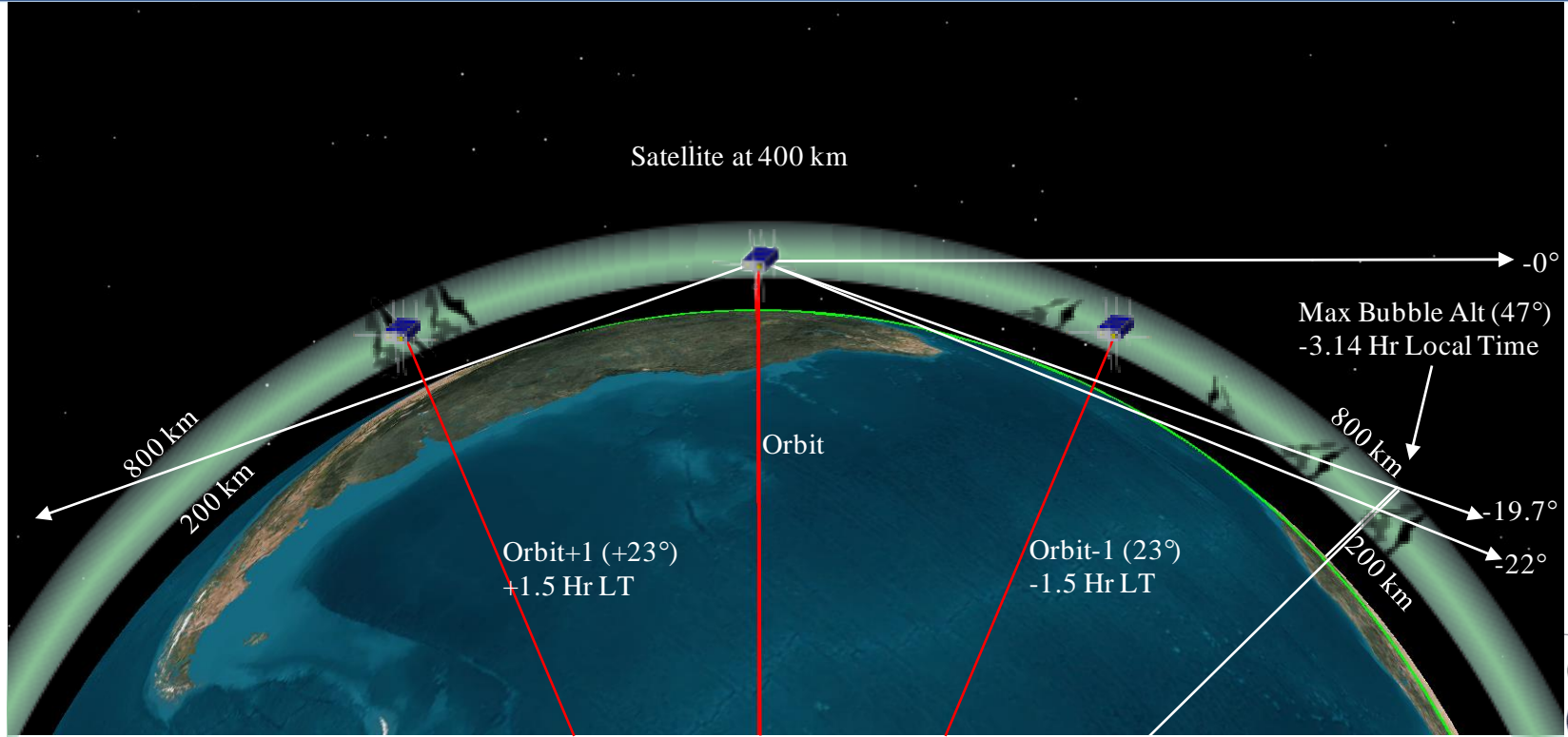


Mission ConOps



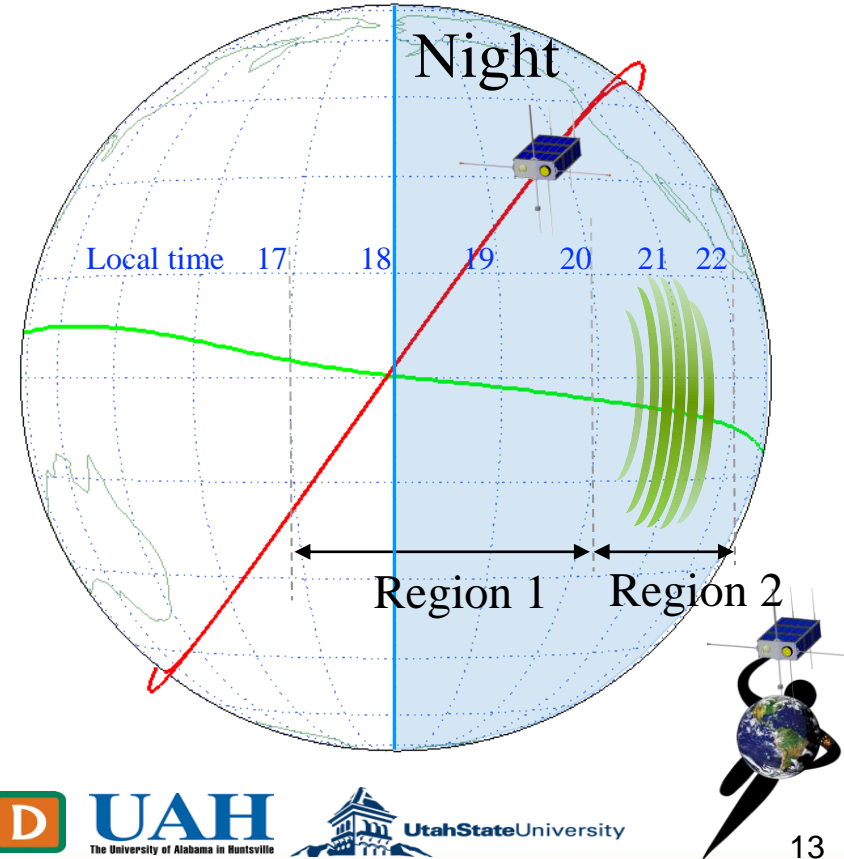
Images: Charlie Gray

GPS Radio Occultation and Scintillation

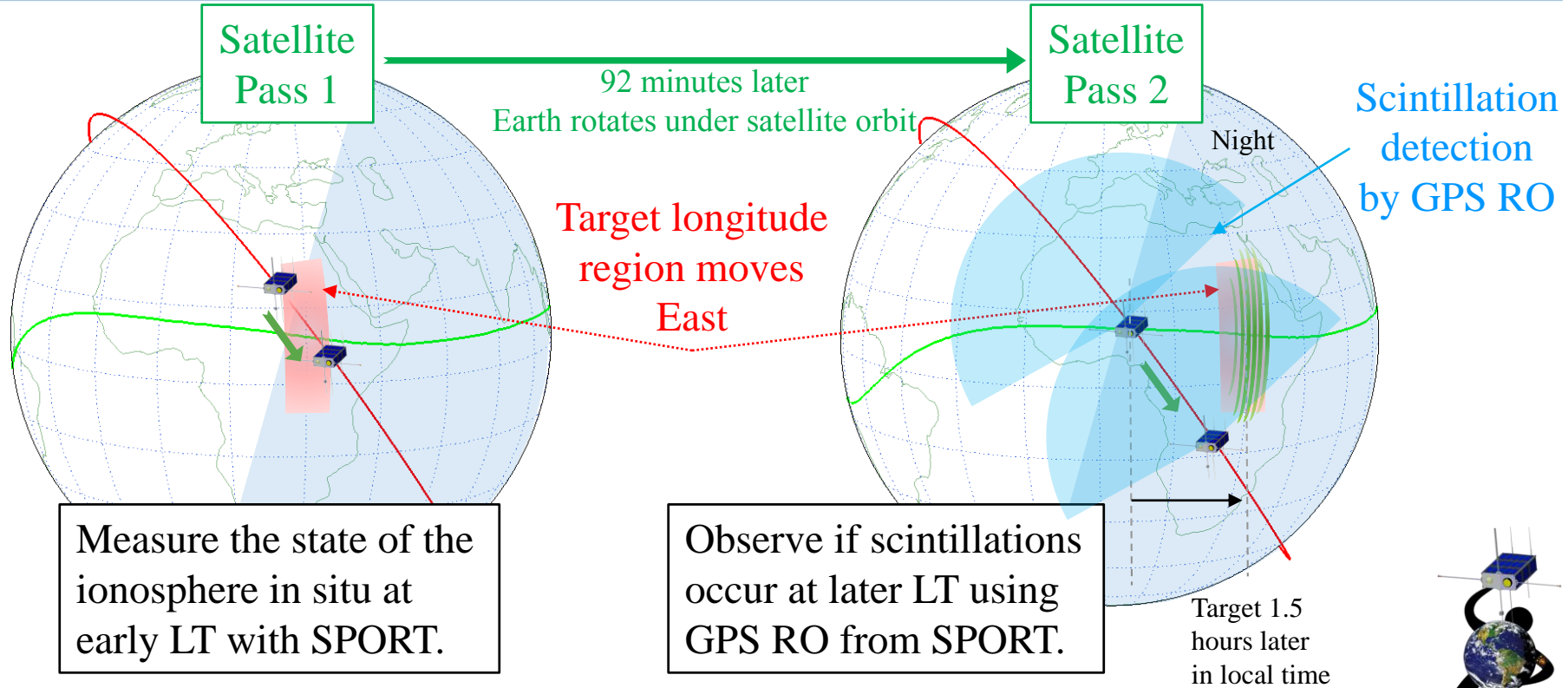


SPORT Methodology

- The state of the ionosphere at early local times is related to the occurrence of scintillations at later local times.
 - How does this relation vary with longitude?
- Use case studies when SPORT ascending or descending node is within 17 to 24 LT sector.
- Examine ~15 degree longitude sectors



Methodology Strategy 1



AEROSPACE



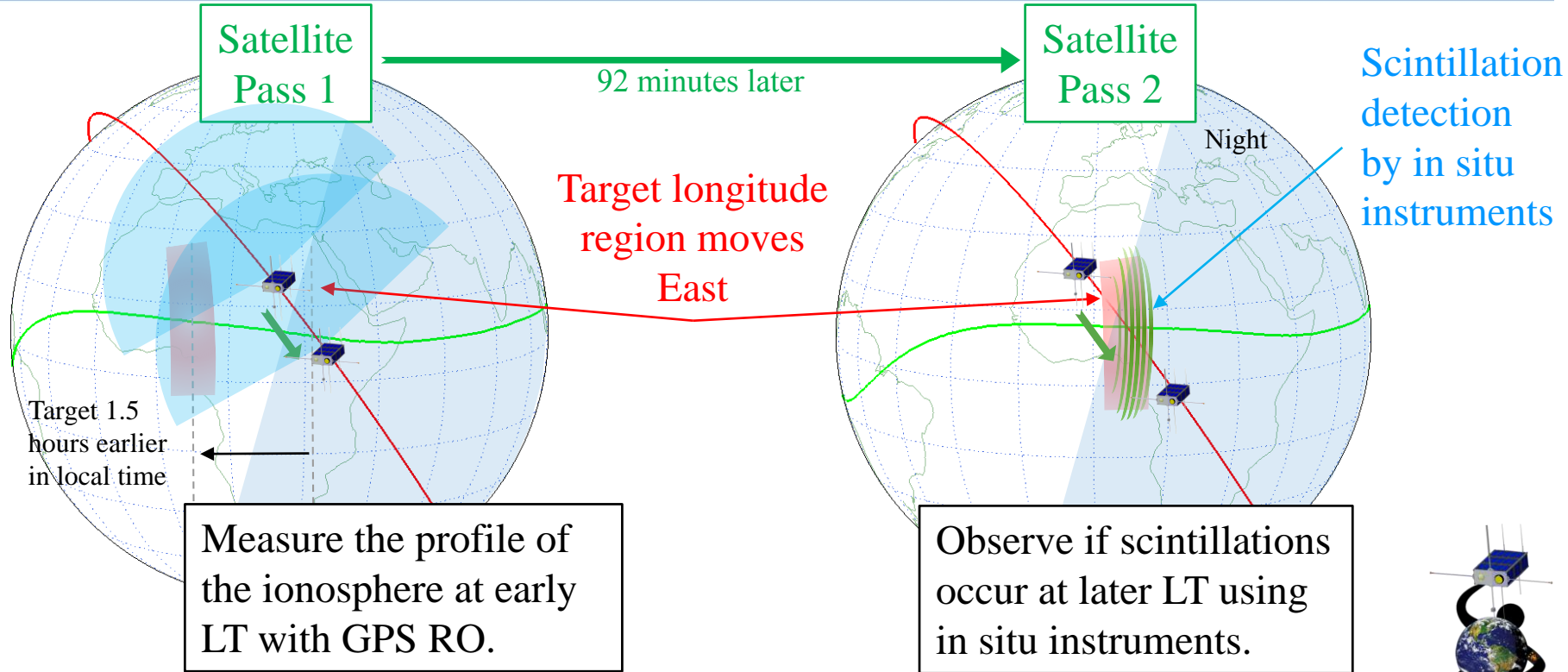
The University of Alabama in Huntsville



UtahStateUniversity

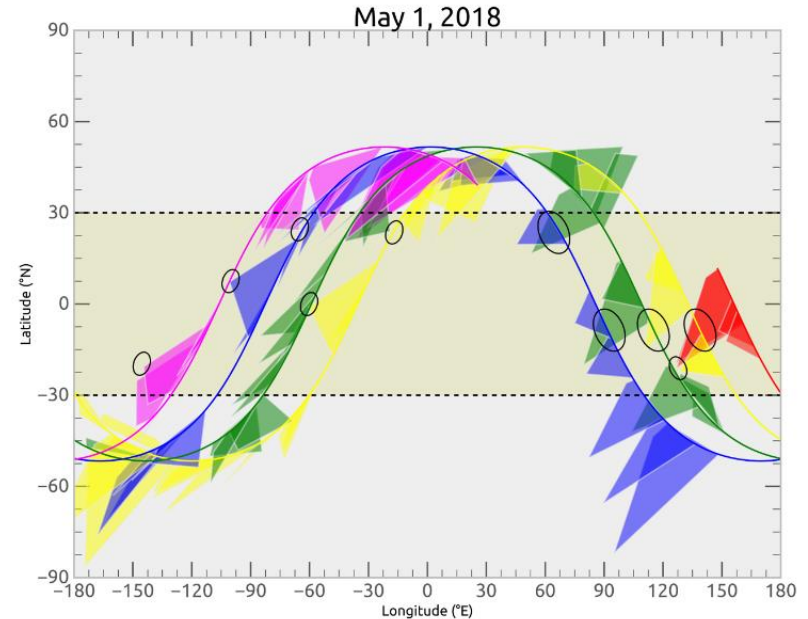


Methodology Strategy 2



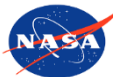
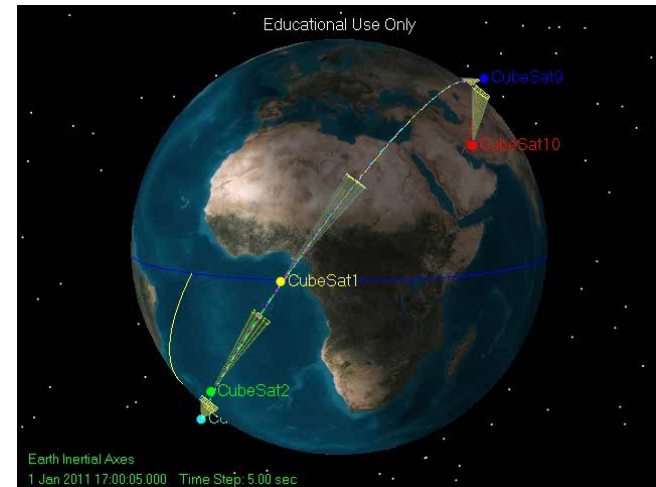
How often are ideal occultation

- Study using SPORT in ISS orbit.
- Over one orbit in the region within $\pm 30^\circ$
 - ~2 profiles over the previous orbit traces
 - ~2 profiles occur over successive orbit traces.



Conclusions

- **CubeSat missions can be developed with a full/regular suite of science instruments.**
- **Mid inclination ISS orbits allow for the deconvolution of local time and longitude at low-latitudes**
- **A String of pearls mission to increase time resolution**



AEROSPACE

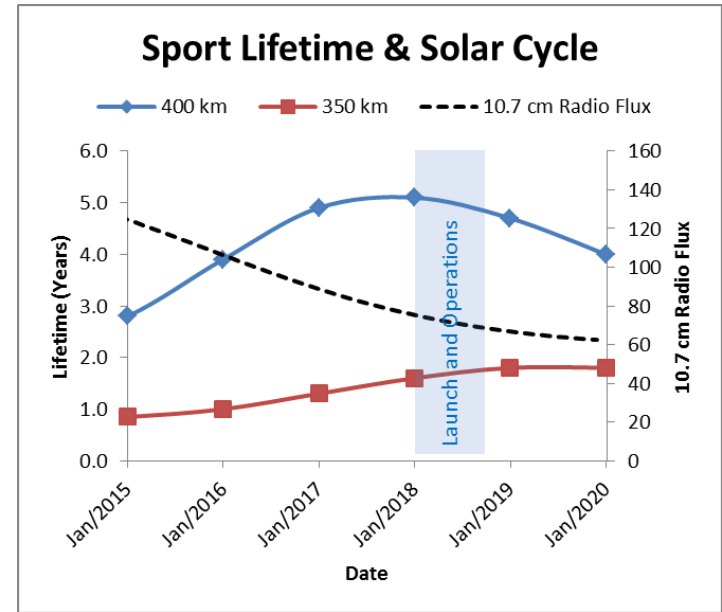
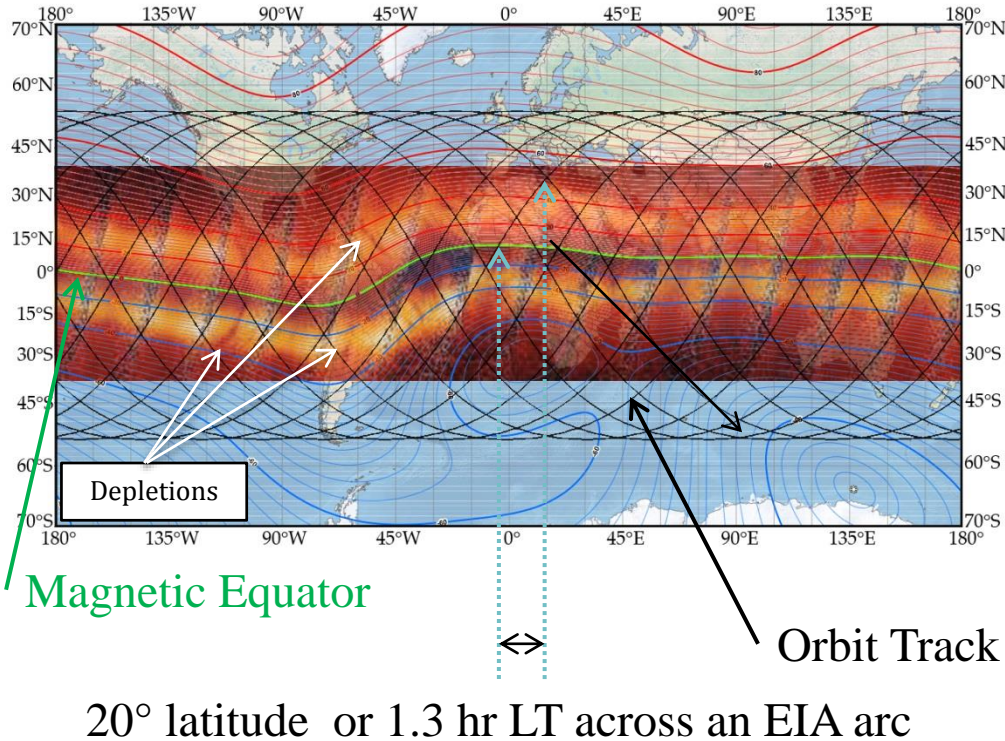


The University of Alabama in Huntsville



UtahStateUniversity

SPORT Mission and ORBIT

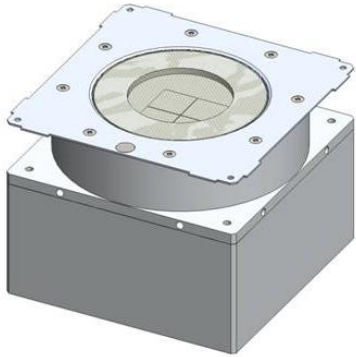


Launch from ISS, 400 km Alt
~3 year life

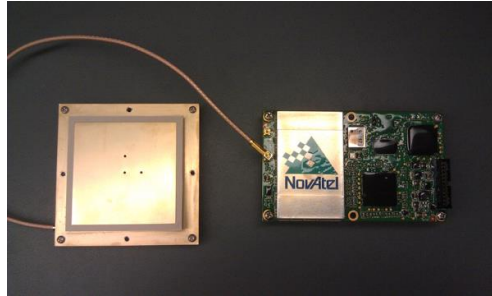


SPORT Instruments

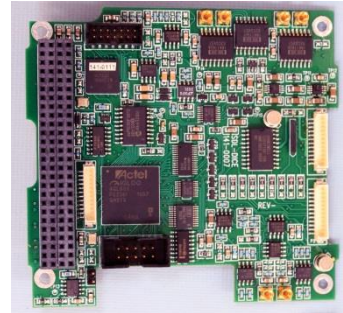
Ion Velocity Meter
UTD



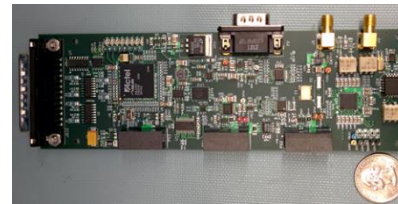
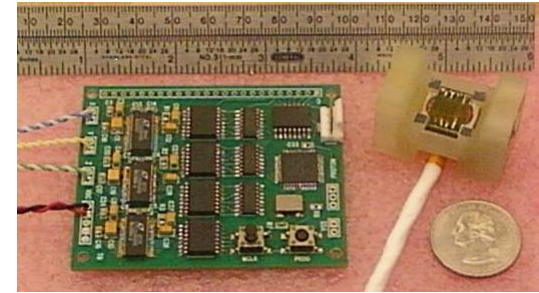
GPS Occultation
Receiver
Aerospace



Langmuir, E-field,
Impedance Probe
USU

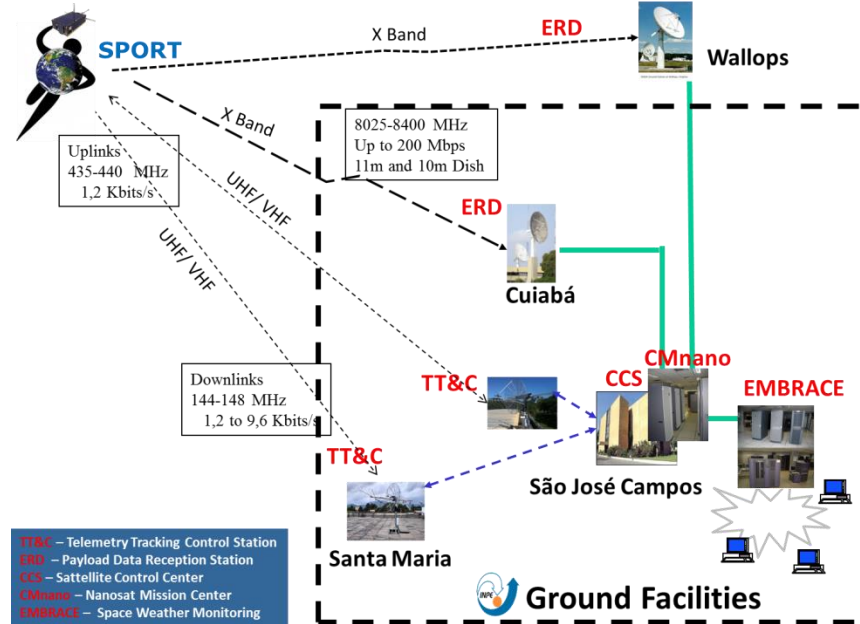


Fluxgate Magnetometer
NASA Goddard



SPORT Telemetry

Channel Name	Duty %	Rate Hz	Bit Rate bps	Alongtrack km
Ion Velocity Meter			1824	
Drifts	100%	2.00	288	3.83
Composition Sweeps	100%	2.00	1536	3.83
GPS RO			16000	
Dayside Tracking	50%	1.00	1000	7.66
Nightside Tracking	50%	50.00	15000	0.15
Langmuir Probe			1984	
DC Probe	100%	40.00	960	0.19
IV Sweeps	100%	0.04	491.52	191.43
Floating Probe Sweeps	100%	0.04	491.52	191.43
N _e Wave Power	100%	0.04	40.96	191.43
E-Field			1321	
DC field	100%	40.00	1280	0.19
E-Field Wave Power	100%	0.04	40.96	191.43
Impedance Probe			197	
I & Q Sweep	20%	0.04	196	191.43
Tracking	20%	40.00	192	0.19
Fluxgate Magnetometer			2880	
DC field	100%	40.00	2880	0.19
Star Imager			1500	
Star Subimage	100%	1.00	1500	7.66
Other			2624	
Science GPS timing	100%	40.00	2560	0.19
Science Housekeeping	100%	0.10	64	76.57
Rate collected on orbit			31210	



50 Mbit/second Downlink giving a safety factor of 14

