



Dynamic/Jitter Assessment of Multiple Potential HabEx Structural Designs

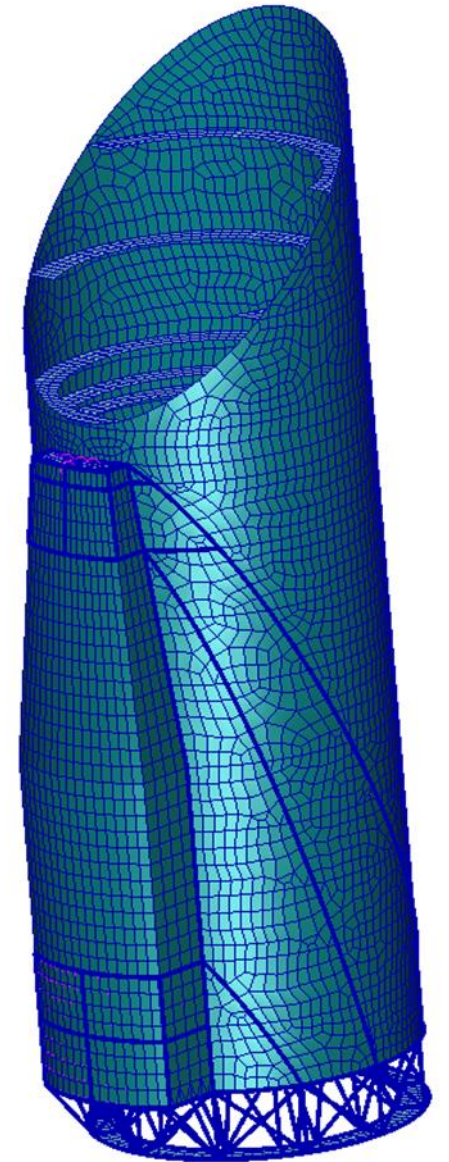
J. Brent Knight/NASA MSFC

August 2017

Introduction

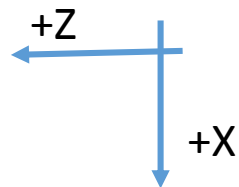
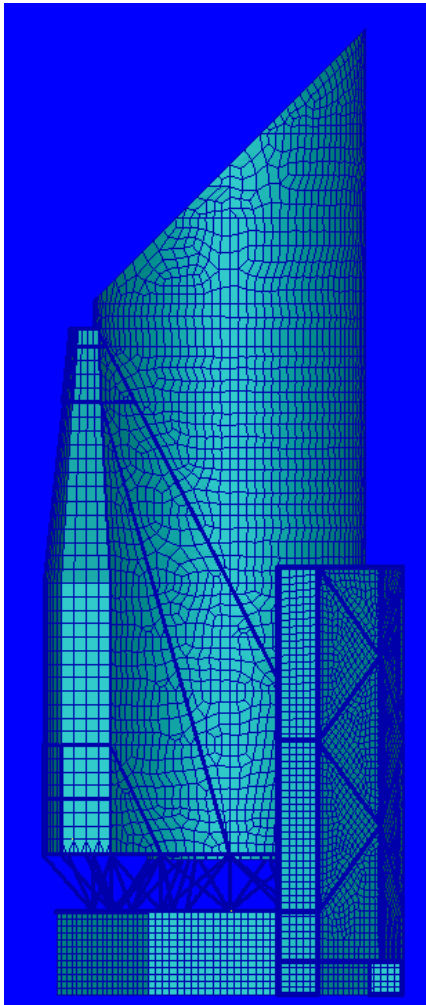


- The 2020 Decadal Survey in Astronomy and Astrophysics will assess candidate large missions to follow James Webb Space Telescope (JWST) and Wide Field Infrared Space Telescope (WFIRST)
 - One candidate mission is the Habitable ExoPlanet Imaging Mission (HabEx)
 - This presentation describes two HabEx structural designs and results from structural dynamic analyses performed to predict Primary Mirror (PM) Secondary Mirror (SM) Line of Site (LOS) stability (jitter) due to Reaction Wheel Assembly (RWA) vibrations



Objective

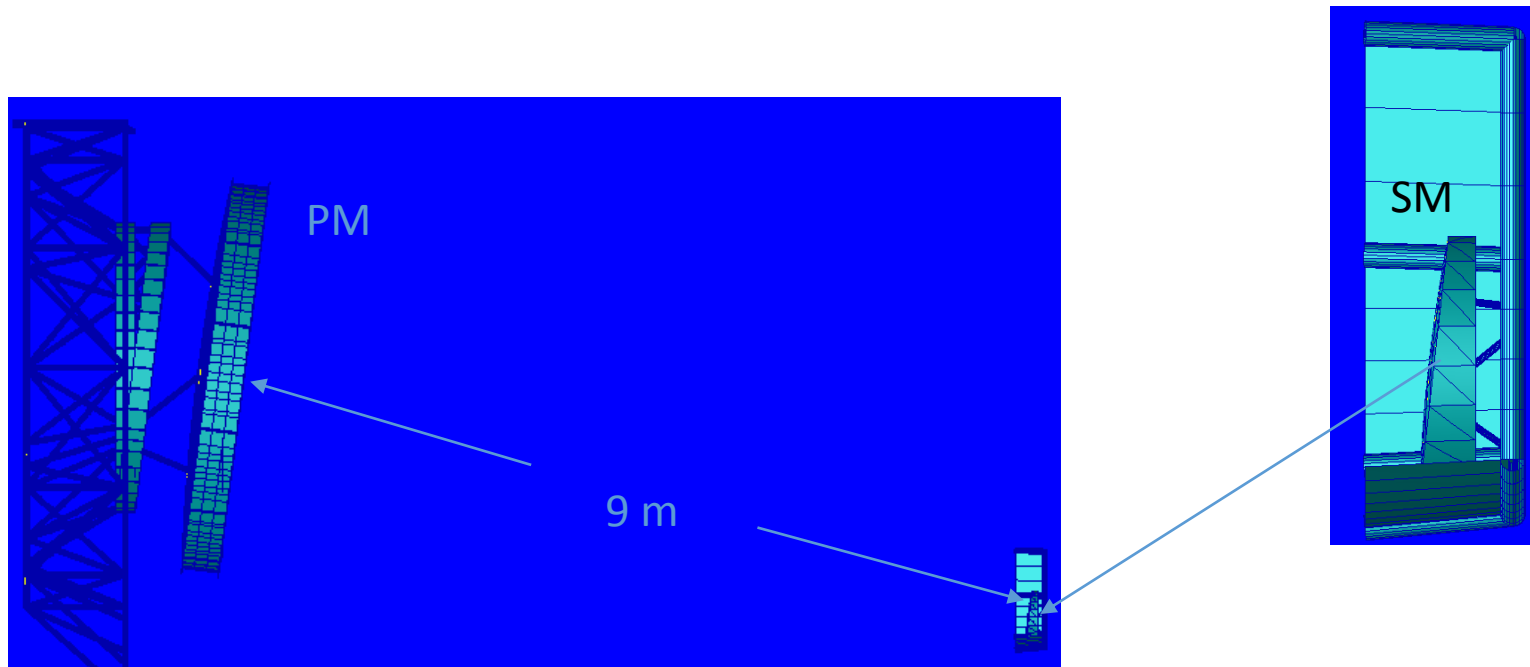
- The objective of this effort was to determine feasibility of meeting HabEx Mechanical stability requirements associated with PM/SM LOS
 - PM/SM LOS alignment is required to be ≤ 5 mas
 - The 9 m spacing between the PM and SM add to the structural design challenge
 - Requirements converted into orthogonal relative displacement vector components are:



Direction	Allocation
X (m)	2.00E-09
Y(m)	2.00E-09
RSSed - De-Center (m)	2.80E-09
Z - De-Space (m)	5.00E-09
Rx (rad)	1.10E-09
Ry (rad)	1.10E-09
RSSed - Tip/Tilt (rad)	1.60E-09
Rz (rad)	1.50E-09

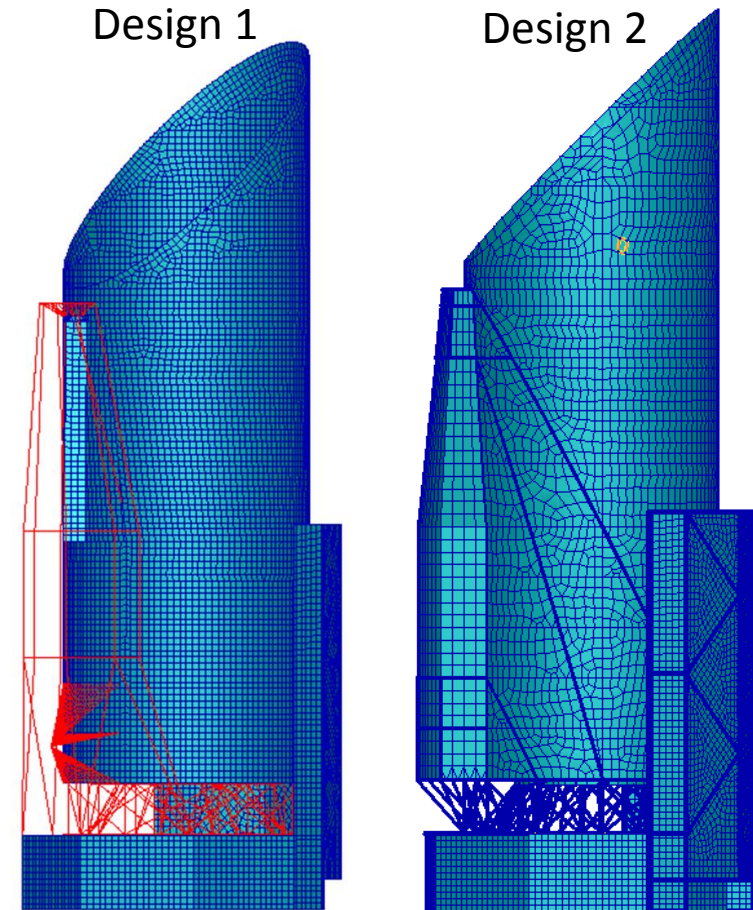
HabEx – Optical Description

- HabEx Designs considered are 4 m PM and .5 m SM off axis optical systems
- The spacing between the PM and the SM being 9 m which, again, adds to the structural design /stability challenge



Structural Designs

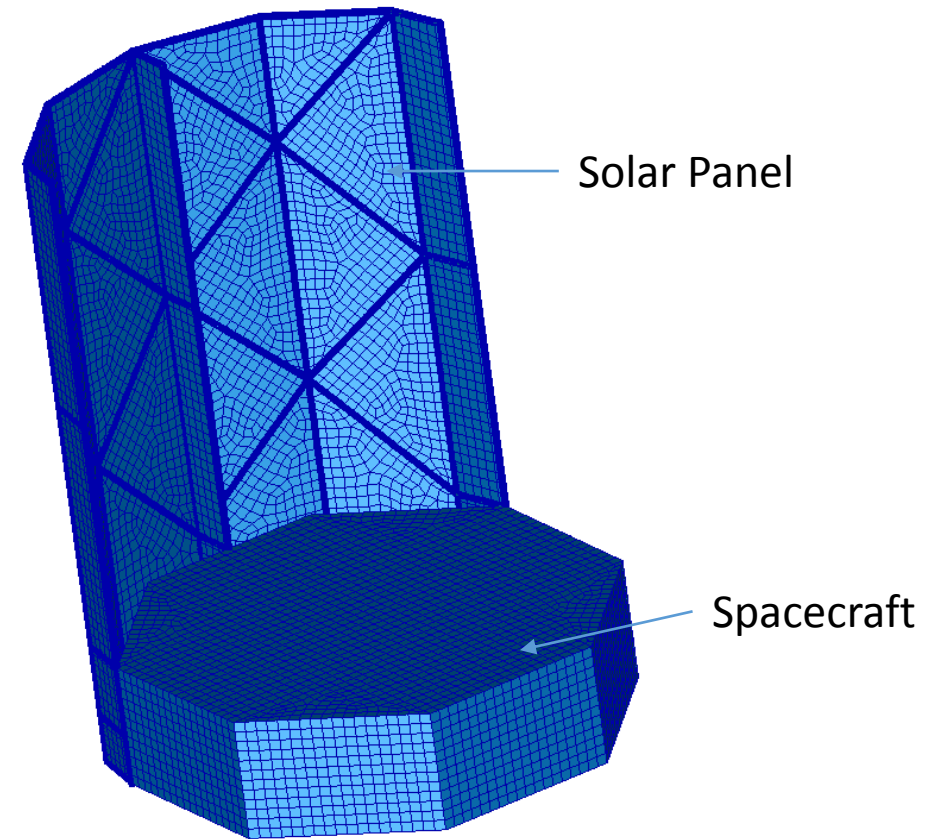
- At the completion of design/analysis 1, stability requirements were not in hand
 - Therefore, how results compared to allowable alignment errors was not known
 - Efforts were then initiated to further evolve the initial design
 - Stiffen the path between the PM and SM without creating detrimental modes
- Two HabEx Structural Designs were analyzed
 - The second design is a further evolved version of the first



Finite Element Models (FEM) of the designs

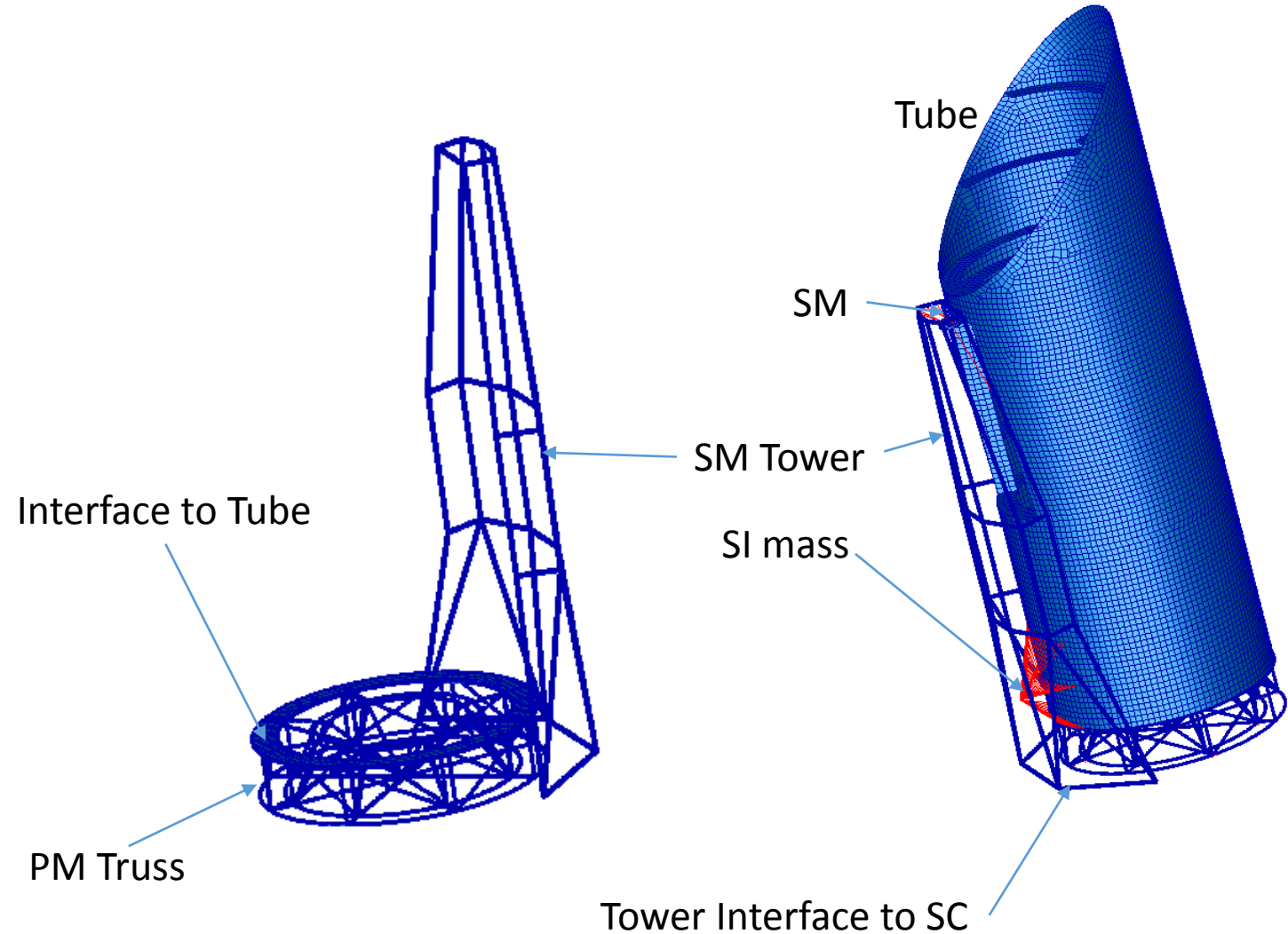
Common Structures

- A simplified Spacecraft design was implemented in both Design 1 and 2
 - Included mass properties representing propulsion and avionics
 - Included 4 load application points
- A simplified solar panel design was included in the design/model



Design 1

- The tower is not connected to the Tube
 - It is integral to the SC only
- The tower includes non-structural mass (not visible) for the stray light baffle

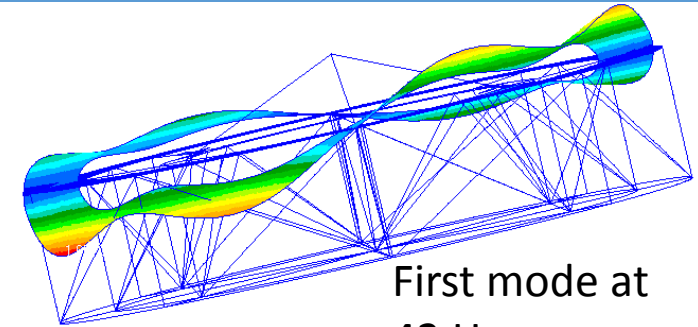
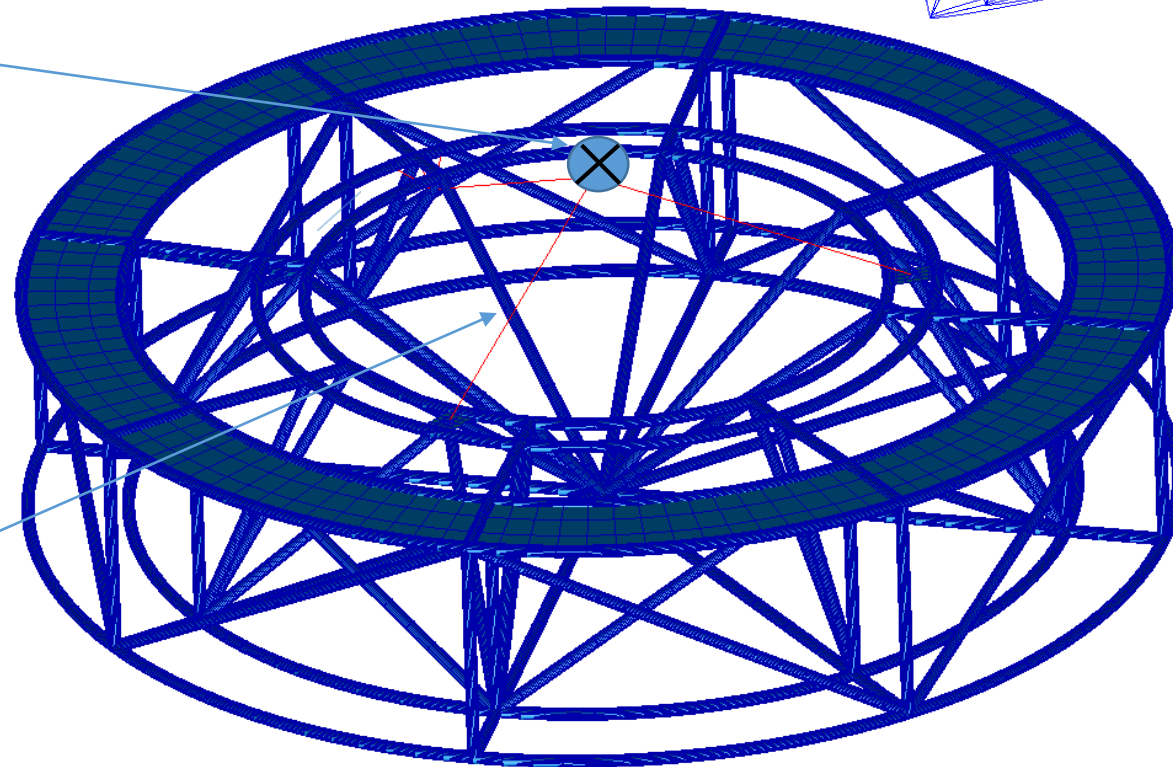


Design 1

- PM Truss

2,000 Kg
Concentrated
Mass Representing
The PM

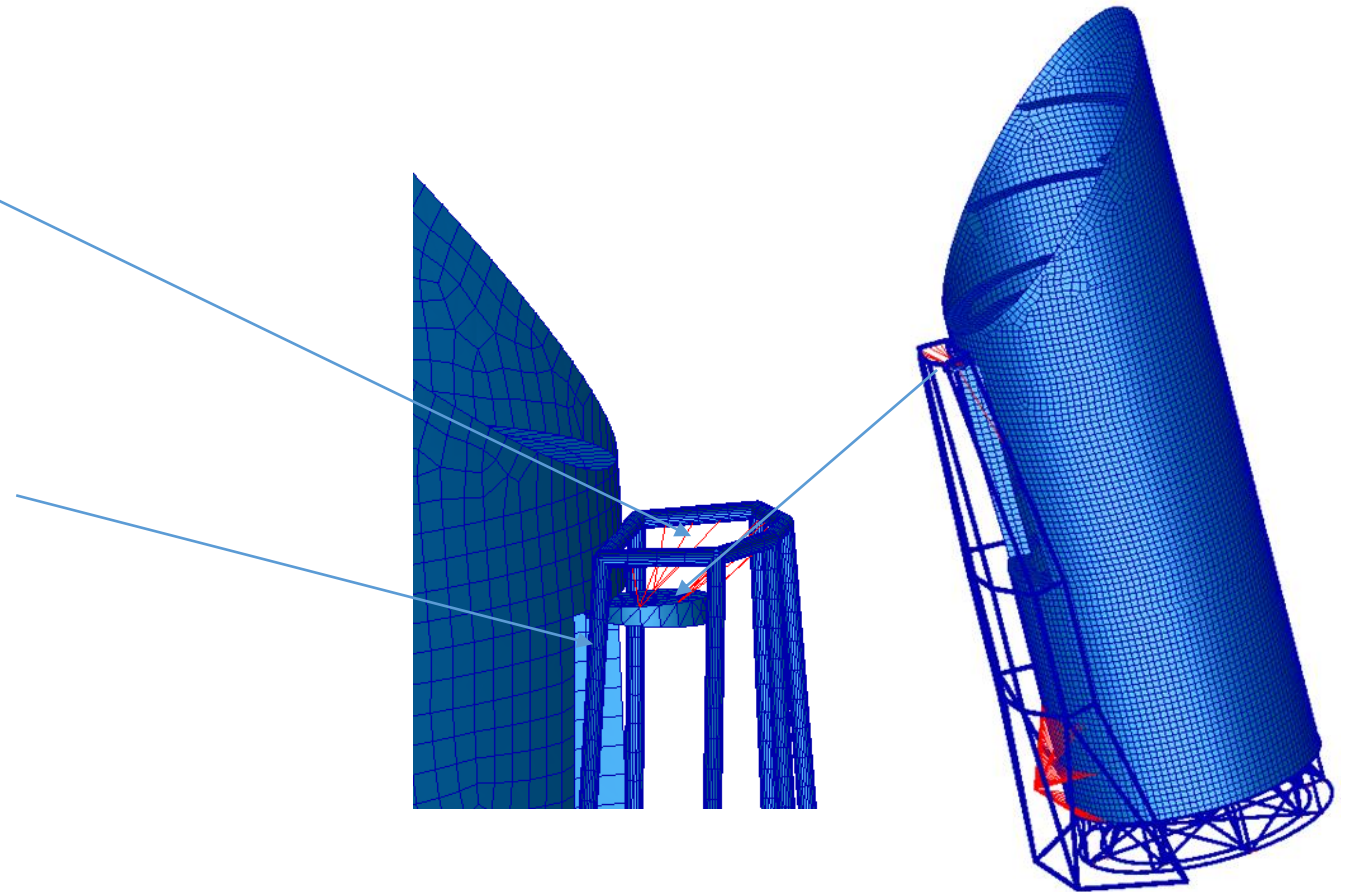
NASTRAN rigid
element connecting
the PM mass to the
Truss



First mode at
42 Hz

Design 1

- SM is attached to the Tower via NASTRAN rigid elements
 - Common modeling technique for a first cut
 - The approach is not well suited for making extremely accurate predictions
- Tower is not connected to the tube

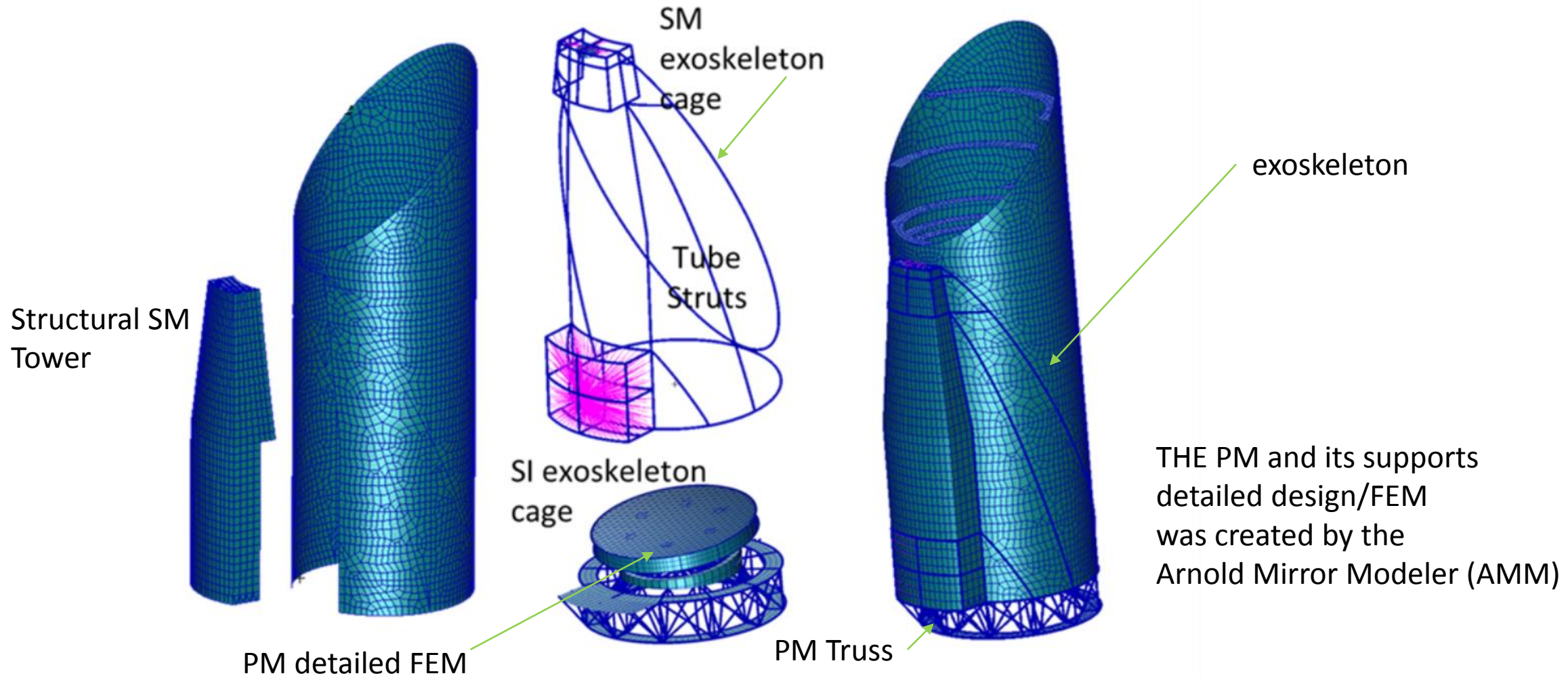




Design 2 - Description

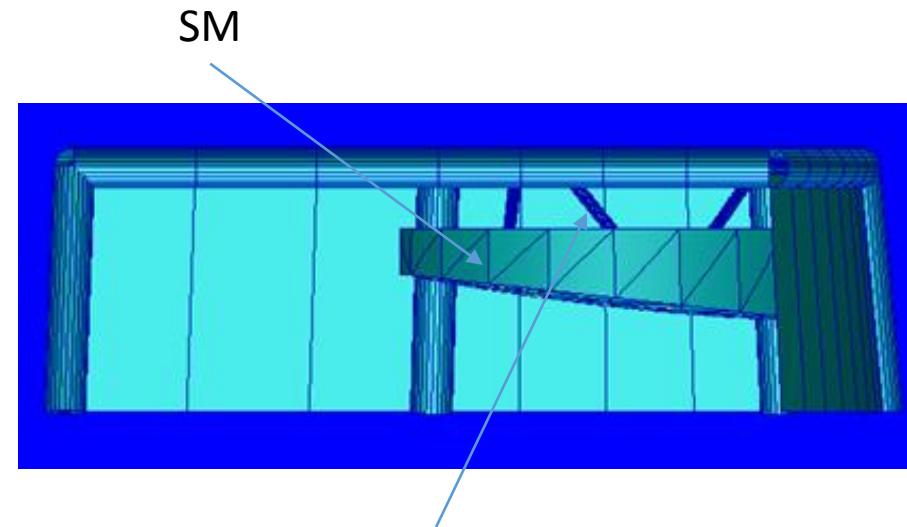
- At this point in time, pertinent stability requirements were not in hand so effort initiated to better the design
- Design 1 modifications:
 1. The SM tower was covered with structural material and integrated to the Tube
 2. An exoskeleton structure that further stiffens the structural path between the PM and the SM was included
 3. A detailed Finite Element Model (FEM) of the PM, created by the Arnold Mirror Modeler (AMM), was included with structural members for the PM support struts (as opposed to a rigid element)
 4. A further re-designed PM truss was included to maintain $f_1 \geq 40$ Hz
 - a. The inclusion of supports with stiffness decreased the first mode dramatically
 5. Structural members (as opposed to a rigid element) were included to represent the SM support struts
 - a. They were scaled based on the PM supports
 6. The composite material was changed to be that of JWST, M55J 954-6 at 68°F.

Design 2 - Description



Design 2 - Description

- The SM supports were, in Design 1, NASTRAN rigid elements
 - They were replaced with linear finite elements
 - Their dimensions were scaled from the PM supports provided by the AMM



SM attached to structural tower via structural Members (NASTRAN CBAR elements) as opposed to a rigid element



Dynamic Forcing Function

- LOS jitter errors are due to a vibration source or sources in the system
- Performing structural dynamic analyses to predict performance associated with jitter requires a Dynamic Forcing Function (DFF)
- Guidance Navigation and Control (GN&C) systems are expected to be the only sources of significant vibrations
 - Reaction Wheels, Thrusters, Etc.
 - It is assumed that HabEx will utilize a Reaction Wheel Assembly (RWA) for GN&C
- JWST personnel communicated that their RWA proved to be challenging with respect to meeting requirements
 - ***The allowable vibration specification for the JWST RWA was utilized in these analyses as the DFF***

Dynamic Forcing Function

- JWST RWA
Vibration Limit
Specification

3.3.1.6 Wheel Unbalance

After exposure to the environments defined in section 3.2.5 of this specification, the unbalance magnitude of the RWA rotating components shall not exceed the following values:

- Static Unbalance: Less than 1.0 (g-cm) over the operating speed range.
- Dynamic Unbalance: Less than 14.0 (g.-cm²) over the operating speed range.
- The peak radial forces and moments produced by the RWA at any operating speed (including resonant conditions) shall not exceed the values listed in the table below:

Peak Radial Disturbance Limits Including Resonant Conditions

Parameter	Frequency	Max. Limit	Parameter	Frequency	Max. Limit
Force (F _x)	0-70 Hz	3.5 N	Torque (M _x)	0-70 Hz	0.5 N-m
	70-210 Hz	0.7 N		70-195 Hz	0.3 N-m
	210-270 Hz	10 N		195-225 Hz	1.5 N-m
	270-500 Hz	0.7 N		225-500 Hz	0.3 N-m

3.3.1.7 Axial Induced Vibration

The peak force (amplitude) produced by the RWA in the direction parallel to the its spin axis shall not exceed 0.2 N within the frequency range 2-200 Hz, when measured at constant speeds that are within the operational speed range and that are free of major structural resonances. The peak axial force produced by the RWA at any operating speed (including resonant conditions) shall not exceed the following limit values:

Frequency Range (in Hz):	0-150	150-195	195-225	225-300	300-500
Axial Force (F _z) Limit:	0.7 N	4.5 N	45 N	4.5 N	0.7 N

Scott Knight of Ball Aerospace



Dynamic Forcing Function

- Use of the JWST RWA is considered conservative
 - Between the time the JWST RWA vibration specification was written and the time a potential HabEx mission selects a RWA (assuming it uses RW's) available RWA's should be more precise (lower emitted vibrations) than that of JW
 - Presumably that technology, like others, will evolve over decades
 - Hence, use of existing JWST RWA data is conservative
 - If HabEx engineers opt to utilize thrusters or some other means to achieve GN&C it is likely that doing so will be done to better performance
 - Hence, use of existing JWST RWA data is conservative

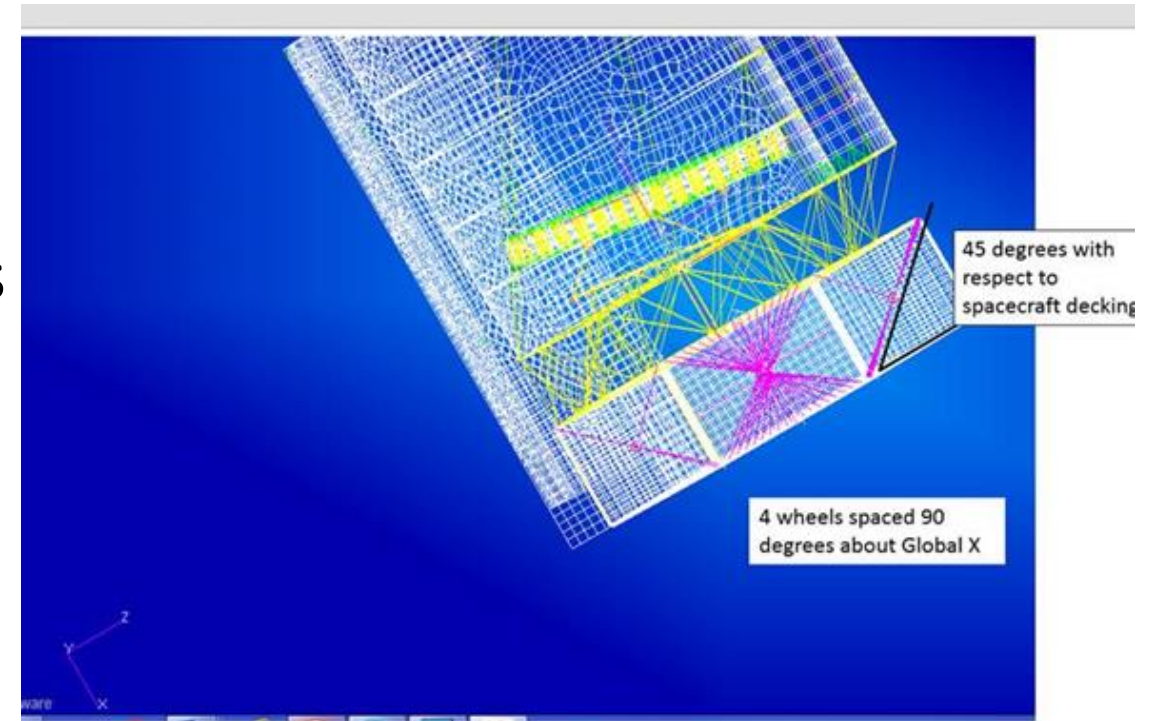
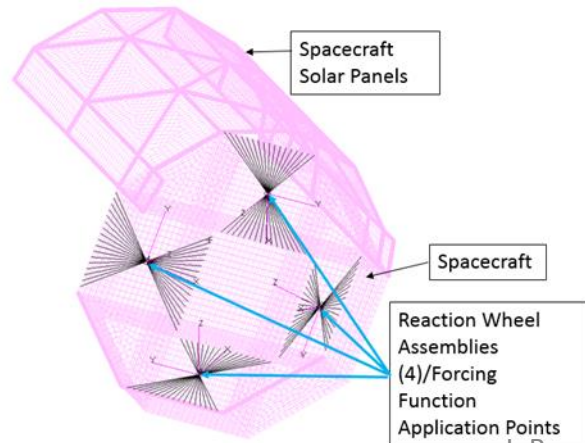


Analysis

- Frequency Response Analysis (FRA) were performed to predict relative motion between the center of the PM and the center of the SM
 - At each frequency analyzed the FEM is loaded with a sinusoidal force of unit maximum amplitude
 - The mean Displacement of the surface of the PM and the SM are calculated due to the input sinusoidal force
 - The relative motion between the two is determined from those results
 - Those data were scaled by the DFF
 - A FRA is effectively a “transfer function” (TF) approach

Analysis

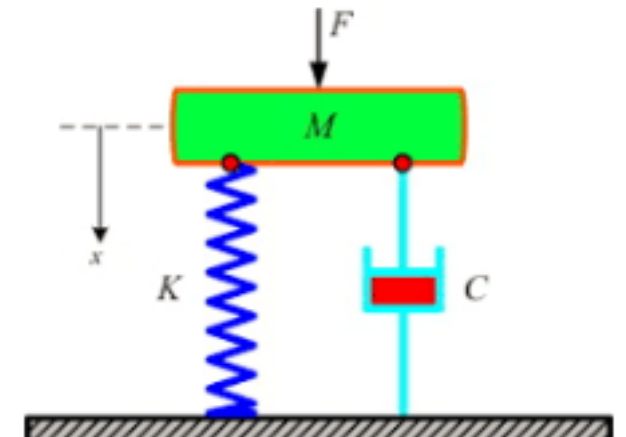
- Frequency response analyses were performed on both designs
- The system FEM was in the free-free configuration as it would be in service
 - The FEM is not fixed or grounded
- 1% Damping was used
- Results were output at 1Hz intervals
- 4 DFF Applications Points



Analysis

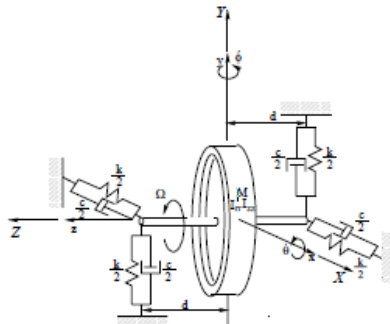
- Uncertainty Factor
 - Due to the very small order of magnitude (nm's) of data being predicted and the use of standard material properties, a 15% uncertainty factor was applied to results
- Isolation
 - JWST has reported that with a number of passive isolation systems a net 80 dB reduction in vibratory responses has been achieved
 - Therefore 80 dB reduction has been assumed in these analyses
 - Should be a reasonable philosophy
 - Assuming pertinent technologies and capabilities evolve between now and when they are needed perhaps better than 80 can be achieved

$$-80db = 20 \text{ Log } \left(\frac{\textit{isolated response}}{\textit{predicted response}} \right)$$

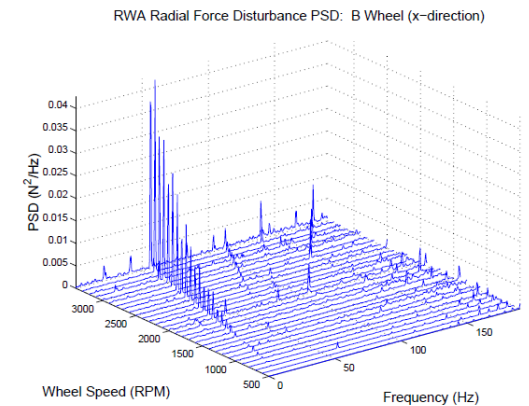


Analysis

- Conservative application of the DFF data
 - JWST data included axial and radial forces as well as torque spectra
 - JWST allowable axial and torque vibration levels were applied in all cases simultaneously with some combination of a radial force vectors at each of the 4 reaction wheels
 - The orientation of the vibratory load radial to each of four the wheels was varied to determine the worst combination of 4 orientations.
 - Initially the load vector was changed in 1 degree increments
 - After the worst combination was determined, the increment was changed to 10 degrees and that converged to the same answer
 - From that time forward a 10 degree increment was utilized
 - This approach is perceived as conservative

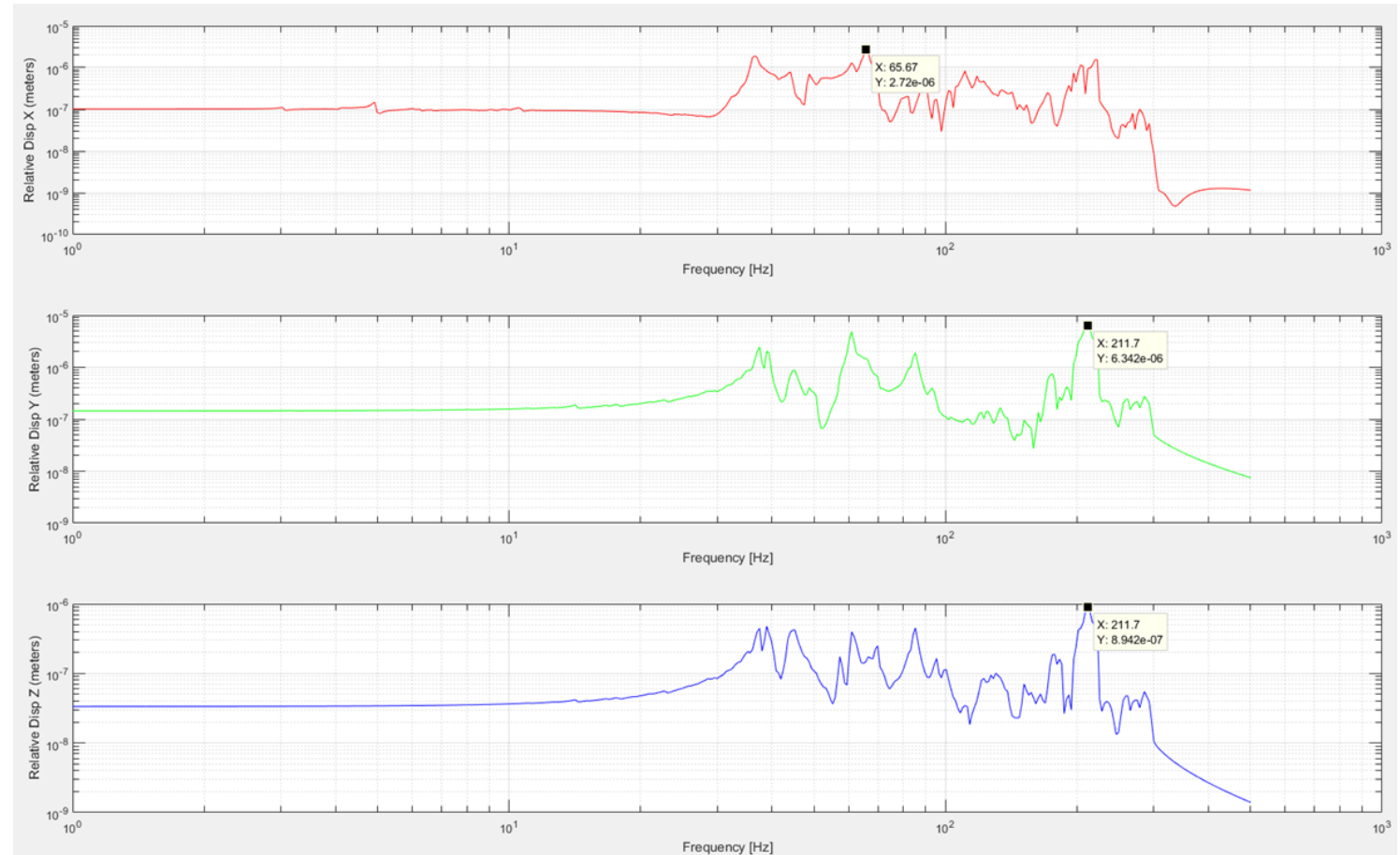


Graphics From: "DEVELOPMENT OF EMPIRICAL AND ANALYTICAL REACTION WHEEL DISTURBANCE MODELS", Rebecca A. Masterson, David W. Millery and Robert L. Groganz



Results

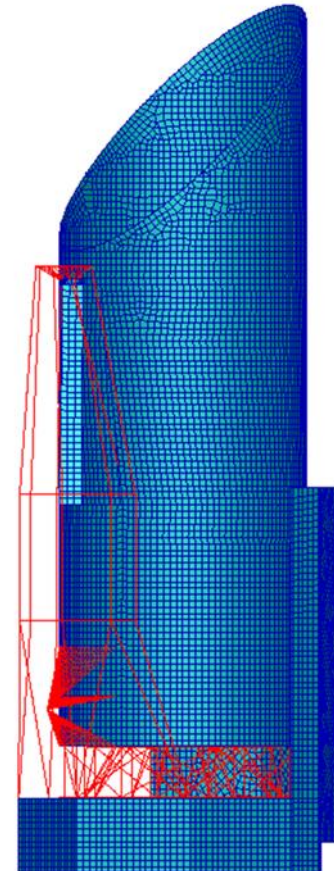
- Sample of relative displacements from 1 to 500 Hz
- At each frequency, from 1 to 500 Hz, in increments of 1 Hz and at each modal frequency, the X, Y, and Z displacements were output for the PM and the SM
- The same was done for rotational motion
- The sum of those numbers at each frequency is the relative displacement



Results

- Design 1 summary
 - Tower independent of tube
 - SM Tower has less structural material than design 2

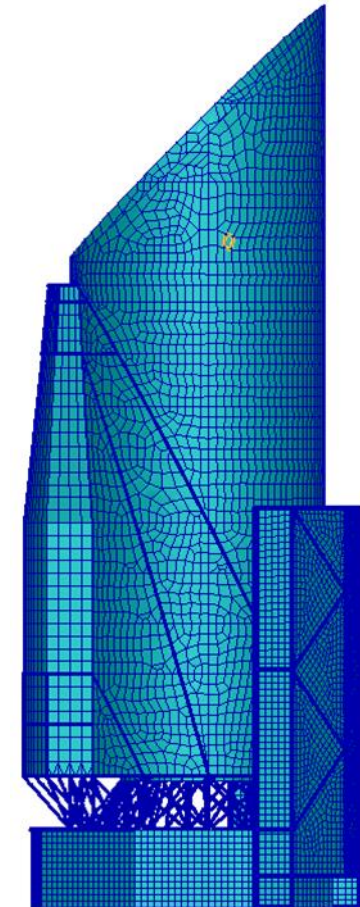
Design 1			
Linear (m)		Rotation (rad)	
X	2.78E-10	Rx	6.26E-12
Y	1.40E-09	Ry	1.25E-11
RSSed X&Y - De-Center	1.43E-09	RSSed Rx&Ry - Tip/Tilt	1.40E-11
Z - De-Space	4.38E-10	Rz	6.39E-12



Results

- Design 2 summary
 - Stiffer SM tower
 - Tower/Tube stiffness integrated
 - Notably more stiffness between the PM and SM
 - Exoskeleton

Design 2			
Linear (m)		Rotation (rad)	
X	3.13E-10	Rx	6.26E-12
Y	7.29E-10	Ry	4.96E-12
RSS X&Y - De-Center	7.93E-10	RSSed Rx&Ry - Tip/Tilt	7.98E-12
Z	1.03E-10	Rz	3.25E-12



Results

- Comparison of Design 1 and Design 2
 - With the exception of Y decenter Design 2 out performs Design 1
 - Design 2 RSS^{ed} decenter results out performs Design 1
 - **Design 2 is more stable than Design 1**

Direction	Design 1	Design 2	Design 2 vs. Design 1
X (m)	1.40E-09	3.13E-10	22.30%
Y(m)	2.78E-10	7.29E-10	261.98%
RSSed - De-Center (m)	1.43E-09	7.93E-10	55.47%
Z - De-Space (m)	4.38E-10	1.03E-10	23.46%
Rx (rad)	1.25E-11	6.26E-12	49.91%
Ry (rad)	6.26E-12	4.96E-12	79.23%
RSSed - Tip/Tilt (rad)	1.40E-11	7.98E-12	56.97%
Rz (rad)	6.39E-12	3.25E-12	50.90%

Results

- Comparison of Design 2 and pertinent requirements

Direction	Design 2	Allocation	% of Allocation
X (m)	3.13E-10	2.00E-09	15.64%
Y(m)	7.29E-10	2.00E-09	36.46%
RSSed - De-Center (m)	7.93E-10	2.80E-09	28.33%
Z - De-Space (m)	1.03E-10	5.00E-09	2.06%
Rx (rad)	6.26E-12	1.10E-09	0.57%
Ry (rad)	4.96E-12	1.10E-09	0.45%
RSSed - Tip/Tilt (rad)	7.98E-12	1.60E-09	0.50%
Rz (rad)	3.25E-12	1.50E-09	0.22%

- Both designs satisfied the LOS stability requirements
- Design 2 notably out performed Design1

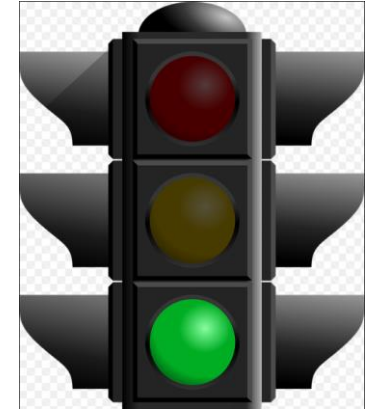


Discussion of Results

- Conservatism
 - Material property UF was utilized
 - Input loads (DFF) applied in many combinations and results enveloped
 - JW RWA data is conservative WRT this activity
 - RSS^{ed} maximum vector components that did not necessarily occur at the same frequency
 - 1% damping is thought to be conservative (in general 1-3 % are commonly used)
 - All DFF applied at the same frequency simultaneously
- Un-conservatism
 - 80 dB reduction based on a simplistic application of that analytically may be over optimistic
- With the conservatism utilized plenty of margin still exists
 - In the worst case, predictions were only about 1/3 the required maximum limit

Conclusions

- The analyses performed to assess feasibility of the global HabEx structure demonstrated that both designs satisfy PM/SM LOS stability requirements
- Design 2, intuitively, is strategically stiffer than Design 1
 - That which keeps the PM and SM in alignment was stiffened and integrated
 - SM Tower stiffened integrated with the Tube
 - The base of the PM support structure was directly tied to that of the SM via the exoskeleton
 - As anticipated, Design 2 outperformed Design 1
- Knowing that in a real system, when hardware is built, and this order of magnitude of performance is required, numerous unforeseen and unpredictable impacts to performance should be anticipated
 - With this in mind, even though Design 1 satisfies requirements and Design 2 would likely be more expensive, Design 2 is the current baseline



Acknowledgements

- NASA/MSFC/ES22 personnel supporting this effort are extremely busy with SLS activities and likely always multitasking to the extreme
- Nonetheless, when asked if they could support this activity they found a way to integrate their efforts/contributions to HabEx in between their never ending SLS list of tasks
- The efforts of Andy Singleton, Melissa Therrell, Ron Hunt, and Kate Caldwell were considered above and beyond and are greatly appreciated

