



Testing and Modeling of the Mars Atmospheric Processing Module

**Anthony Muscatello, Paul Hintze, Anne Meier,
Elspeth M. Petersen, Jon Bayliss, Ricardo Gomez
Cano, Rene Formoso, Malay Shah, Jared Berg,
Bruce Vu, Alexander Walts, and Rupert Lee**

NASA – Kennedy Space Center

AIAA SPACE 2017

Orlando, FL

September 12-14, 2017



Outline



- **Introduction**
- **CO₂ Freezer and Sabatier Subsystem Testing**
- **Sabatier Temperature and Catalyst Testing**
- **CO₂ Freezer Testing and Modeling**
- **Conclusions**
- **Acknowledgments**



MARCO POLO Project



- **ISPP: In Situ Propellant Production**
 - Demonstrate production of Mars Sample Return propellant
 - Reduce risk for human Mars missions
- **MARCO POLO - Mars Atmosphere and Regolith Collector/Processor for Lander Operations**
 - Started in 2011
 - Continues as the **Mars ISRU Pathfinder** project
- The **Atmospheric Processing Module (APM)**
 - Mars CO₂ Freezer Subsystem
 - Sabatier (Methanation) Subsystem
- Collect, purify, and pressurize CO₂ (≥88 g/h)
- Convert CO₂ into methane (CH₄) (32 g/h) and water (72 g/h) with H₂
- Other modules mine regolith, extract water from regolith, purify the water, electrolyze it to H₂ and O₂, send the H₂ to the Sabatier Subsystem, and liquefy/store the CH₄ and O₂



Lander Design Concept



Atmo Processing Module:

- CO₂ capture from simulated Mars atmosphere (KSC)
- Sabatier converts H₂ and CO₂ into Methane and water (KSC)

C&DH/PDU Module: (JSC)

- Central executive S/W
- Power distribution

Soil Processing Module:

- Soil Hopper handles 30 kg (KSC)
- Soil dryer uses CO₂ sweep gas and 500 deg C to extract water (JSC)

Liquefaction Module: (TBD)

- Common bulkhead tank for Methane and Oxygen liquid storage

Water Cleanup Module: (KSC)

- Cleans water prior to electrolysis
- Provides clean water storage

Water Processing Module: (JSC)

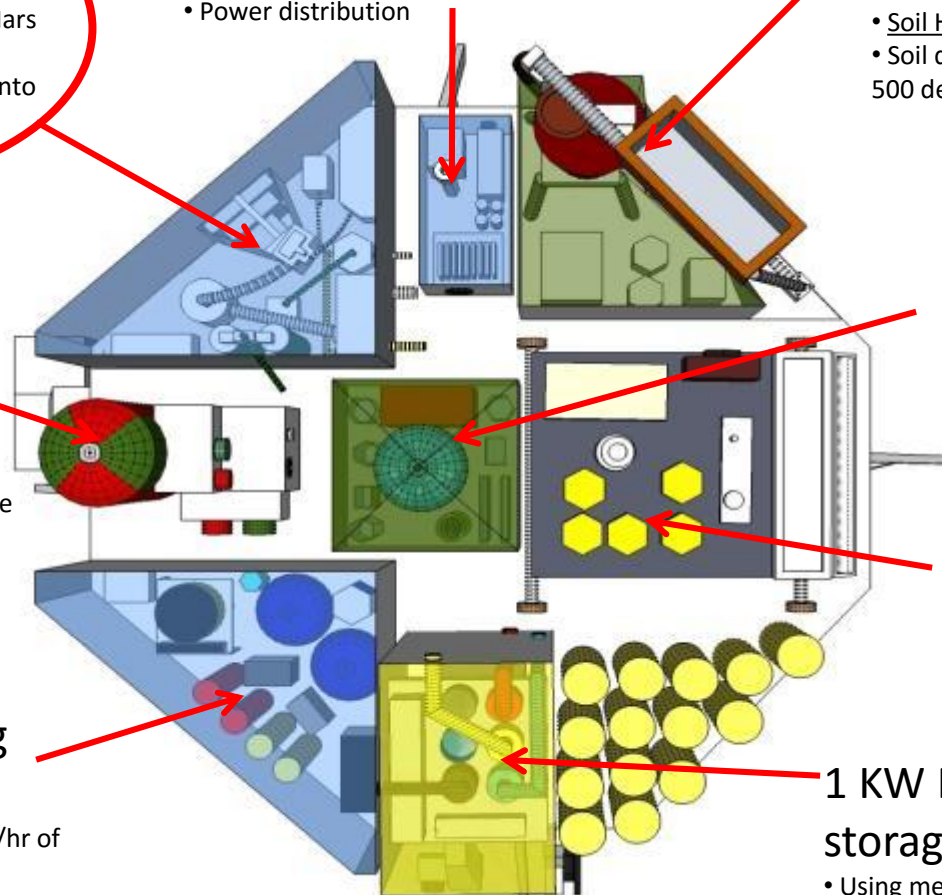
- Currently can process 520g/hr of water (max 694 g/hr)

RASSOR 2.0: (KSC)

- Excavator
- Provides feed to Soil Dryer

1 KW Fuel Cell and consumable storage (JSC & GRC)

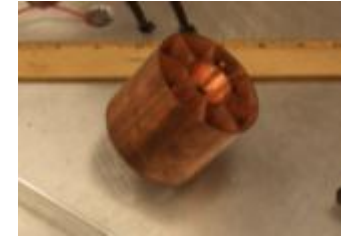
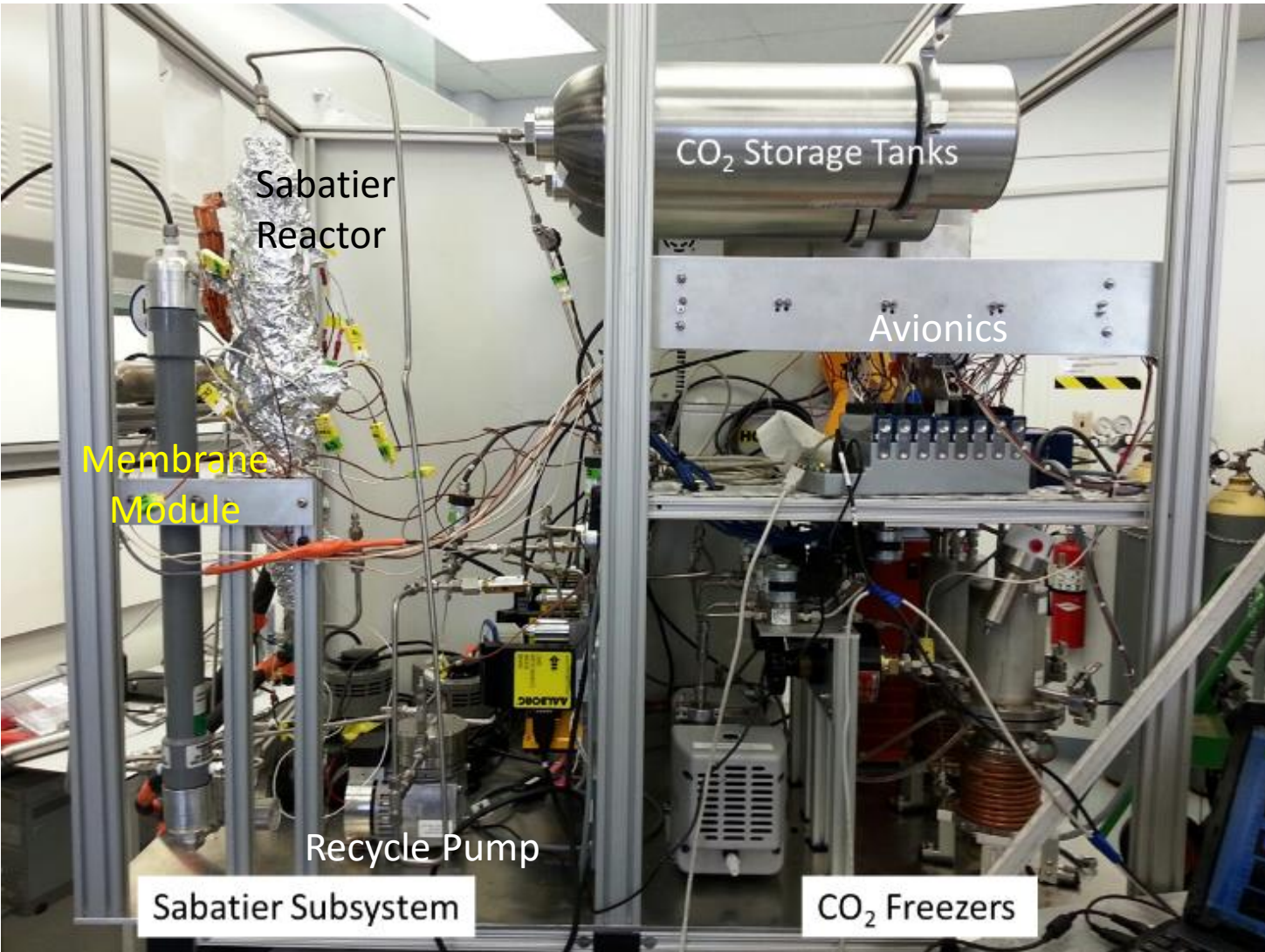
- Using metal hydride for H storage due to available
- 1 KW No Flow Through FC (GRC)
- 10 KW main power FC not shown (JSC)



3m x 3m octagon lander deck



Atmospheric Processing Module



Copper Heat Exchanger



CO₂ Freezers and Chiller



CO₂ Freezer and Sabatier Subsystem Testing



- **Previously demonstrated nominal operations of both the CO₂ Freezers and the Sabatier Subsystem (Earth & Space 2014 and 2016 Conferences)**
- **Measured power to freeze CO₂ at 0.22 W/kg (108% of theoretical) → 680 W for 3.1 kg CO₂/h (full scale ISRU module)**
 - **Froze ≥70% of incoming CO₂ @ ~100 g/h**
- **Sabatier subsystem produced 32 g CH₄/h at >99.9% pure**
- **Water production rate = 64-70 g/h**
 - **Not due to vapor in CH₄ or in membrane module**
 - **Still looking for missing water**



CO₂ Freezer and Sabatier Subsystem Testing (Cont.)



- Tested CO₂ Freezers @ 1.0-1.6 SLPM (nominal 1.2 SLPM)
 - Froze 87-71% of incoming CO₂
- Tested Sabatier subsystem at 0.3-1.2 SLPM (nominal 0.75 SLPM)
 - 550°C maximum temperature observed
 - CO observed in product @ higher feed rates
- Performed “virtual” integrated test (“Dust to Thrust”) w/other KSC hardware in Sept. 2016
 - Very successful
 - Met goals
 - CO₂ flow rate was 11% high due to Mass Flow Controller issues
 - <https://www.youtube.com/watch?v=cRLnAeL3wdU> (142,000 views so far!)
- Plan partial integrated KSC hardware test in October 2017
 - WCM on lander, transferring water through DTAU to a rover w/3 tanks: water, simulated liquid methane, and simulated liquid oxygen
 - APM transmitting and receiving data

Results of the APM Virtual Integrated Test

Test Duration, 6 h, 50 min	Total	Average Flow Rate	Average Mass Rate	Target	Delta, %
Methane Production	243 liters	0.831 SLPM	35.6 g/h	32 g/h	+11.1%
Water Production	516.1 g	-	75.5 g/h	72 g/h	+4.9% (-5.8%)
Calculated CO ₂		0.831 SLPM		0.750 SLPM	+11.1%

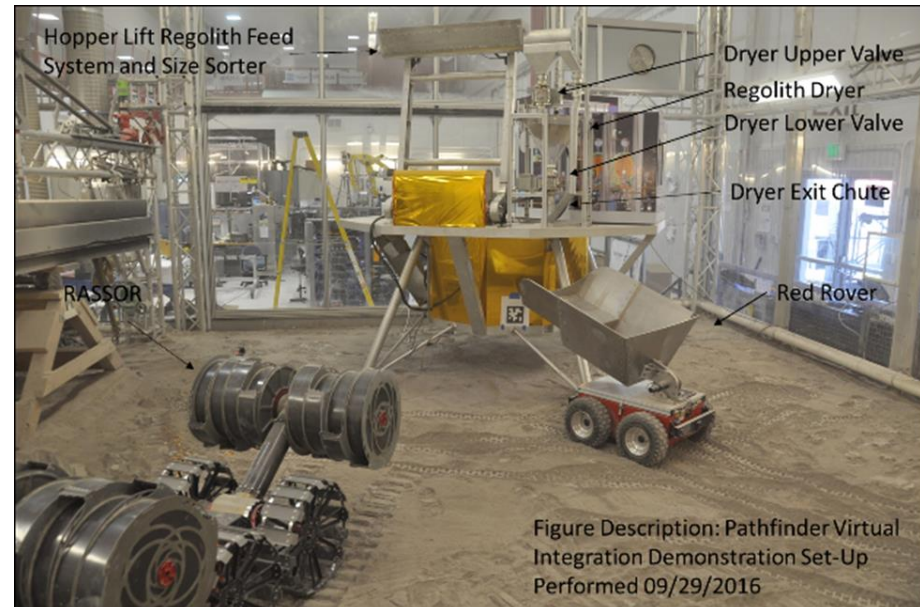


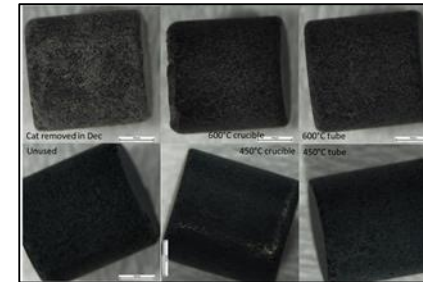
Figure Description: Pathfinder Virtual Integration Demonstration Set-Up Performed 09/29/2016



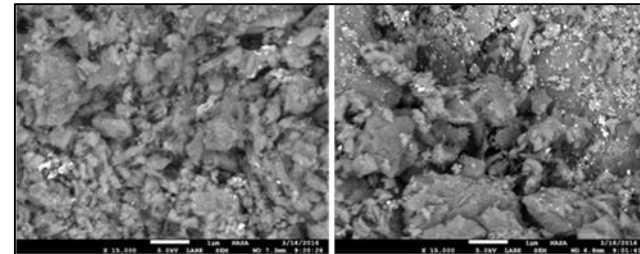
Sabatier Temperature and Catalyst Testing



- Normal operating temps = 453-467°C
- At 1.25 SLPM CO₂, T = 586°C
- CO observed during test and subsequent tests
- Ru/Al₂O₃ catalyst much lighter w/broken pellets
- Sintering possible @>500°C
- Thermal shock investigated @450 and 600°C
- High temperatures experienced by the pellets or the rapid increase in temperature was the driving factor in the change in performance and not other factors such as poisoning



Catalyst pellets after five thermal cycles (magnification of 55x)



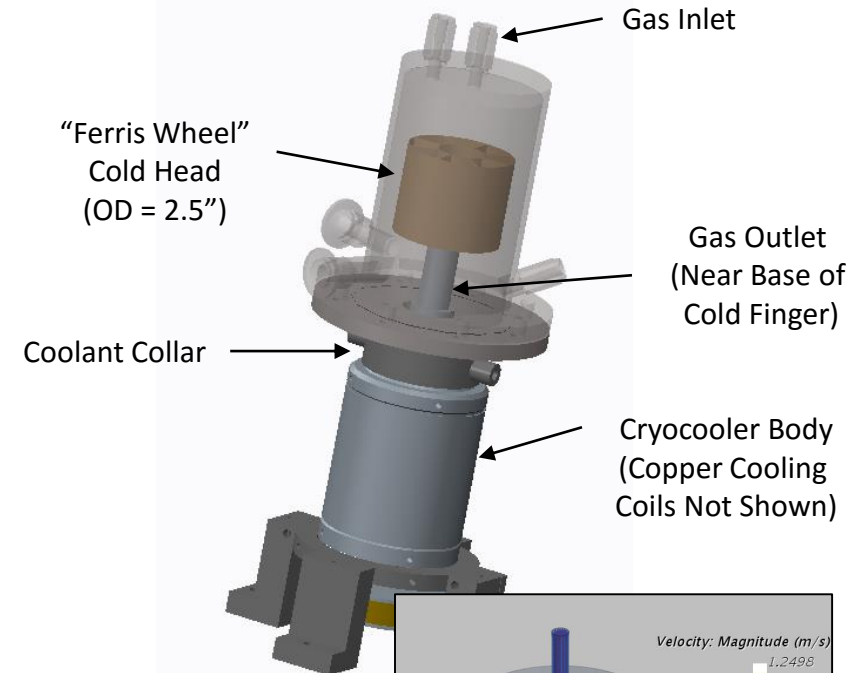
Unused catalyst (left) shows fewer bright specks than the spent catalyst (right) when imaged at 15,000x magnification on an FESEM



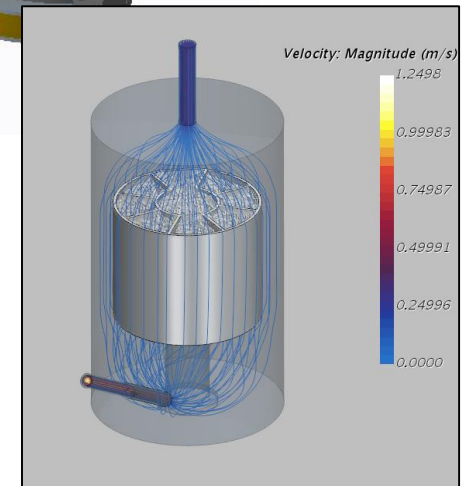
CO₂ Freezer Testing and Modeling



- New NASA ISRU Project formed to develop full-scale Mars ISRU system
- Organized existing resources to develop physics-based models for scale-up
- Initiated modeling and testing of CO₂ Freezer and the Sabatier reactor
- Developed CFD/FEA/VOF (Volume of Fluid) model of existing CO₂ freezer and “Ferris Wheel” cold head
- Sabatier reactor modeling reported at ICES-2017 and TFAWS
 - Good agreement between model and experimental results



Creo 3D model of current CO₂ Freezer & gas flow streamlines around cold head w/VOF model





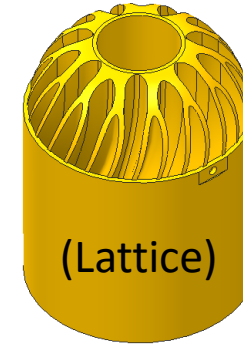
CO₂ Freezer Testing and Modeling (Cont.)



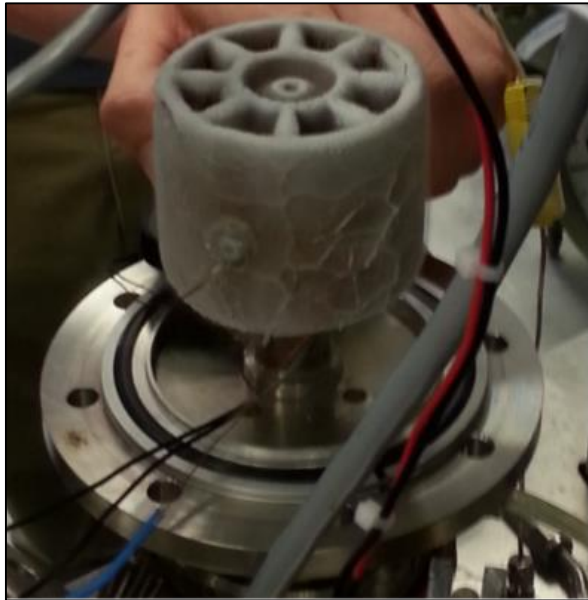
- Opened freezing chamber to observe actual dry ice distribution on Ferris Wheel cold head
- Designed, built, and tested alternate cold heads at long durations



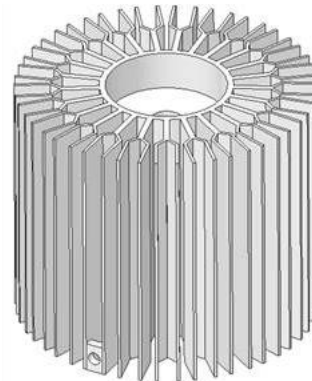
"Starburst" cold head, a precursor to the Ferris Wheel cold head



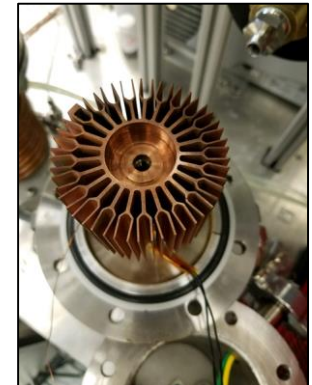
"Branching" cold head CAD drawing & 3D printed version (GRCop-84) from MSFC mounted on cryocooler



Dry ice and water ice frost accumulation on the Ferris Wheel cold head (T = 1.4 h)



CAD drawing of the "Tuning Fork" cold head w/25 fins, EDM machined version, & unit installed on cryocooler

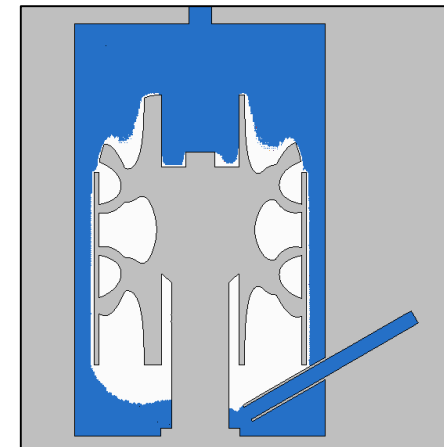
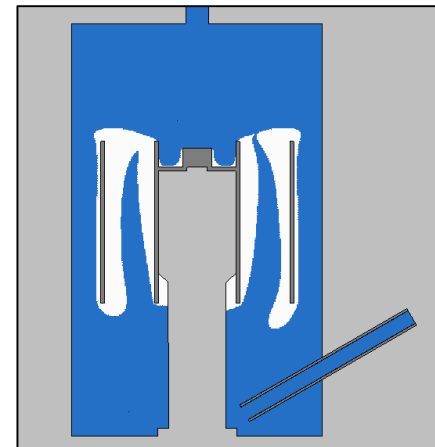
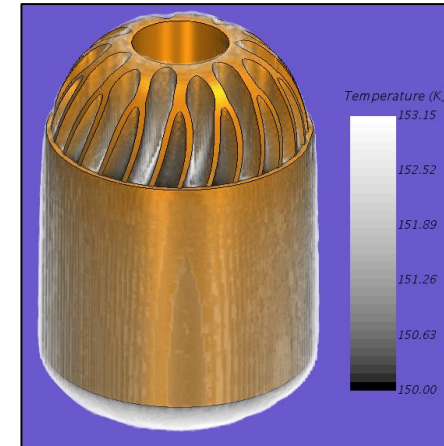
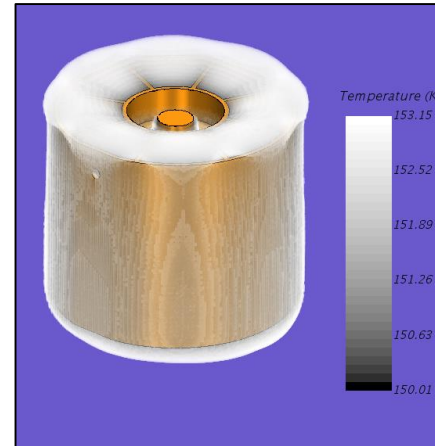




Flow-Considered Steady-State Model Predictions



- **Ferris Wheel model**
 - Did not completely fill in channels
 - Little dry ice at attachment screw
 - Very thin layer on outer walls
- **Branching model**
 - Did fill in channels
 - Little dry ice on top
 - Thin layer on outer walls



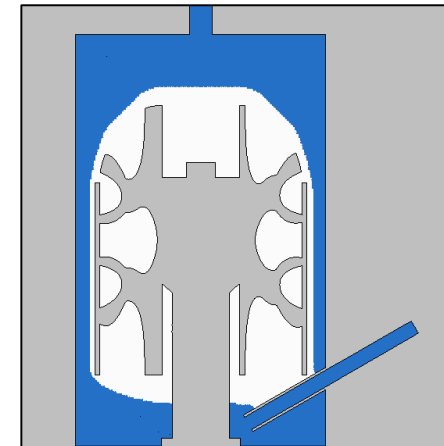
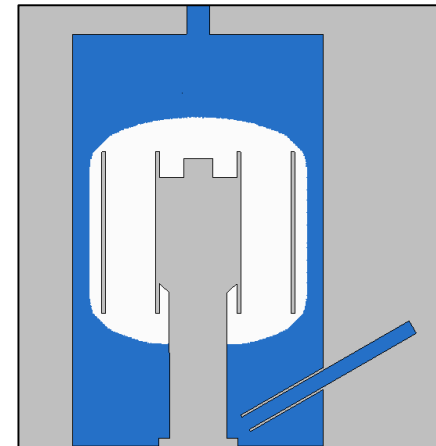
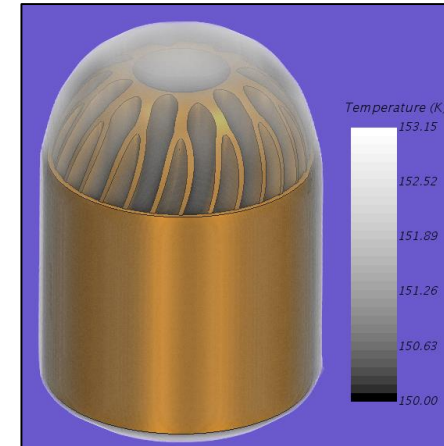
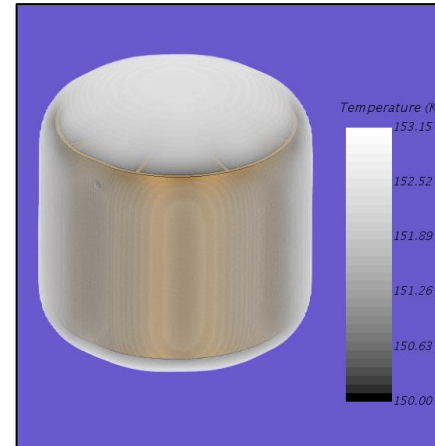
Drawings of the Ferris Wheel cold head (left) and the Branching design (right) with predicted dry ice accumulations at steady-state



No-Flow-Considered Steady-State Model Predictions



- **Ferris Wheel model**
 - Did completely fill in channels
 - Heavy dry ice at attachment screw
 - Thicker layer on outer walls
- **Branching model**
 - Did fill in channels
 - Thick dry ice on top
 - Thin layer on outer walls



Drawings of the Ferris Wheel cold head (left) and the Branching design (right) with predicted dry ice accumulations at steady-state



Comparison of Predicted and Actual Dry Ice Mass at Steady State for Cold Head Designs

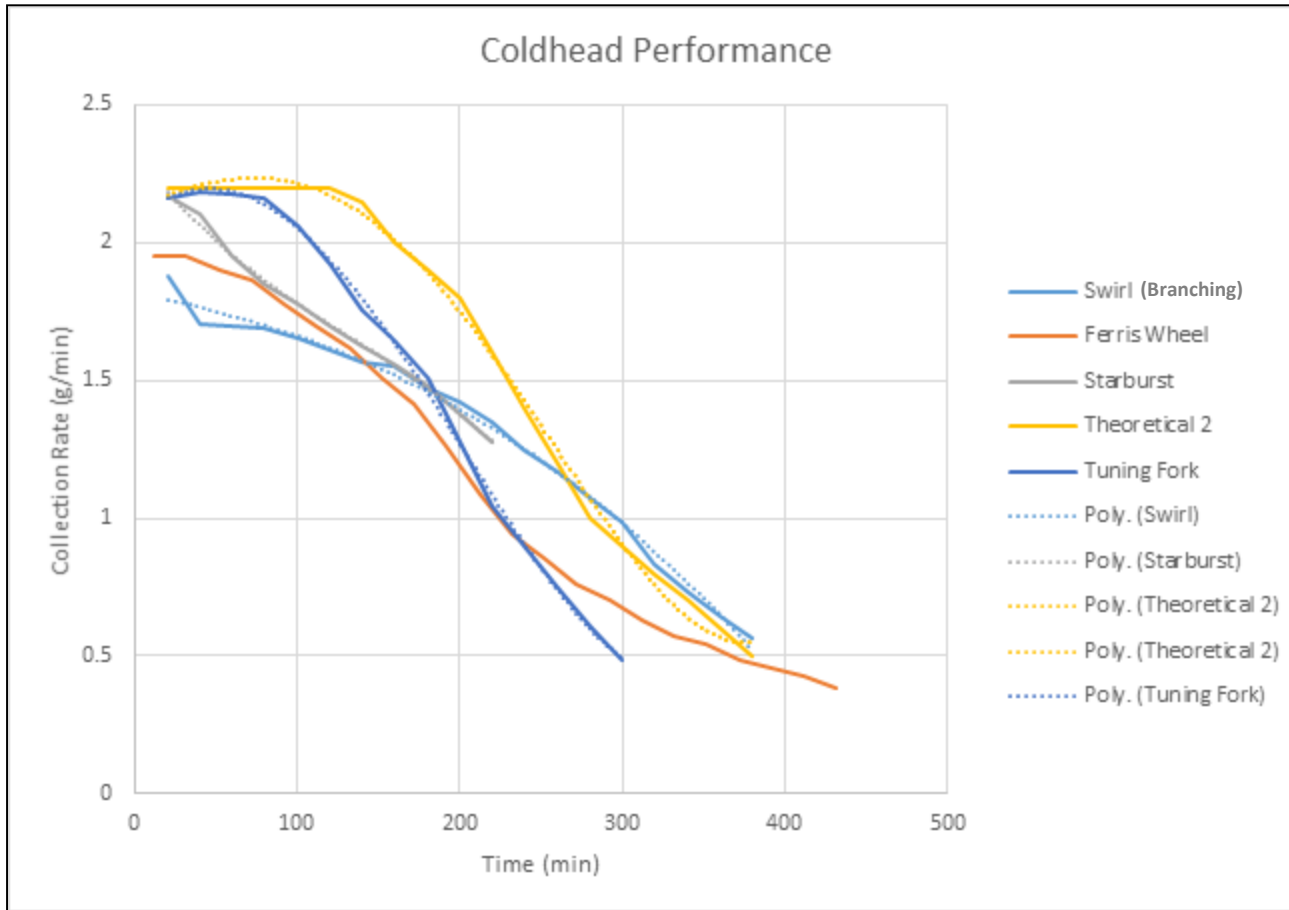


Property or Simulation Type	Ferris Wheel, g	Branching, g	Branching (Lattice), g
Mass	265 g	NA	843 g
Cooling Time to 150 K	8.5 min	NA	45 min
Flow-Considered	207 g	296 g	312 g
No-Flow- Considered	339 g	388 g	404 g
Experimental Results	406 g (7.0 h)	NA	502 g (6.33 h)

- Model is better for cold head *comparisons* vs. explicit predictions for an individual design
- Improvements between the Branching and the Ferris Wheel designs are on the order of 15 – 50%
 - Actual improvement lies between these two extremes
- *Rate* of accumulation may be estimated by normalizing the results when compared to completed steady-state experimental runs



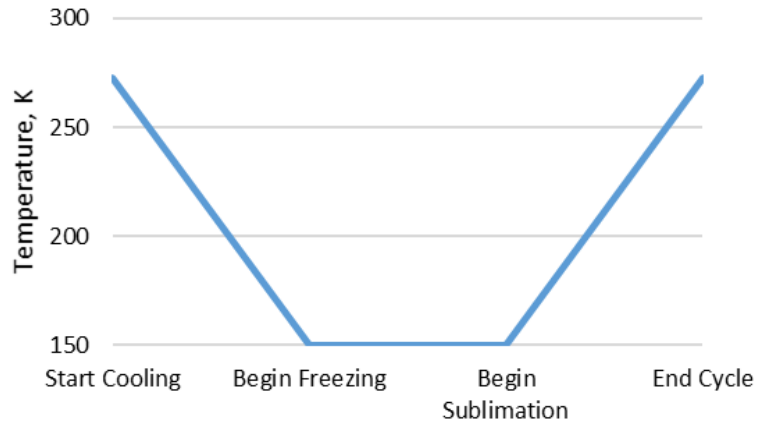
Cold Head Performance Optimization



- **CO₂ Performance Comparison – Test Results vs. “Theoretical Cold Head”**
 - Initial Tuning Fork freezing rate closest to hypothetical “Theoretical 2” rate
 - Exceeded 110 g/h for 120 min; averaged 90 g/h for 5 h



Cold Head Performance Optimization (Cont.)



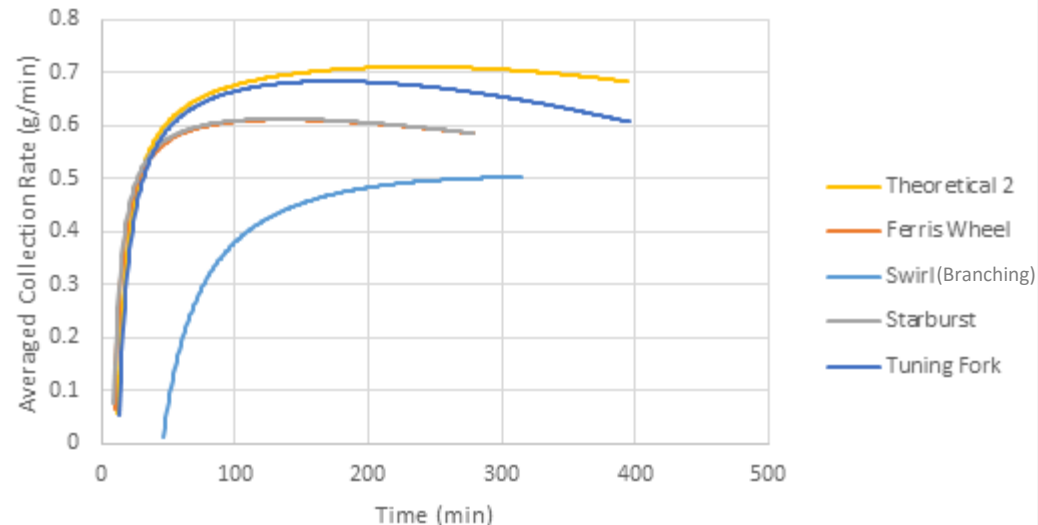
- Cycle Performance Comparison
- Ideal cycle time for the Tuning Fork is 173 min
 - 80.5 min actual freezing time
 - Average collection rate = 41.0 g/h
 - Pair of cryocoolers = 82 g/h

CO₂ collection cycle overview

Optimization:

- Minimize cool down time (reduce mass, maximize thermal conductivity)
- Maximize freezing rate (increase area, maximize thermal conductivity)
- Sublimation rate (supply sufficient heat to close cycle time)

Cycle Performance Comparison





Conclusions



- **CAD models provided info for modeling**
- **Modeling of the CO₂ freezing process has provided great insight into ways to optimize the process**
- **Sabatier reactor modeling gives good agreement of predictions with test results**
- **Sabatier catalysts require protection from thermal shock**
- **Excellent progress has been made in preparing for designing full-scale CO₂ freezers and Sabatier reactors in FY18**



Acknowledgments



- **Multiple NASA interns in addition to the coauthors**
- **Space Technology Mission Directorate (STMD) Game Changing Development (GCD), Next Generation Life Support (NGLS) funding**
- **KSC Continuing Technical Competence (CTC) and Independent Research and Technology Development (IR&TD) projects.**
- **We also especially thank Omar Mireles and Zachary Jones of MSFC for providing Additive Manufacturing cold heads**



Questions?

MARCO POLO/Mars ISRU Pathfinder Modules

