

## 1. Introduction

- National Water Model (NWM) implemented operationally in August 2016 to improve hydrological prediction (OWP, 2017)
  - Four operational configurations (Table 1)
  - Only covers contiguous United States (US)
- NWM is instantiation of Weather Research and Forecasting model hydrological extension package (WRF-Hydro)(Gochis et al., 2013) coupled with Noah Land Surface Model with Multi-Parameterization options (Noah-MP)(Niu et al., 2011)
- WRF-Hydro is extensible, high-resolution hydrologic routing and streamflow modeling framework, coupling column land surface, terrain routing, and channel routing modules (Figure 1) (NCAR, 2017)

	Analysis & Assimilation	Short-Range	Medium-Range	Long-Range
Cycling Frequency	Hourly	Hourly	0600 UTC Daily	Daily Ens. (16 mem.)
Forecast Duration	-3 hours	0-15 hours	0-10 days	0-30 days
Resolution	1-km/250-m/ NHDPlus	1-km/250-m/ NHDPlus	1-km/250-m/ NHDPlus	1-km/1-km/ NHDPlus
Meteor. Forcing	MRMS/ HRRR/RAP	HRRR/RAP	GFS	CFS

Table 1. NWM forecast configurations (OWP, 2017). Resolutions indicate column land surface, terrain routing, and channel routing resolutions, respectively. Meteorological forcing acronyms: Multi-Radar Multi-Sensor (MRMS), Rapid Refresh (RAP), High-Resolution Rapid Refresh (HRRR), Global/Climate Forecast System (GFS/CFS).

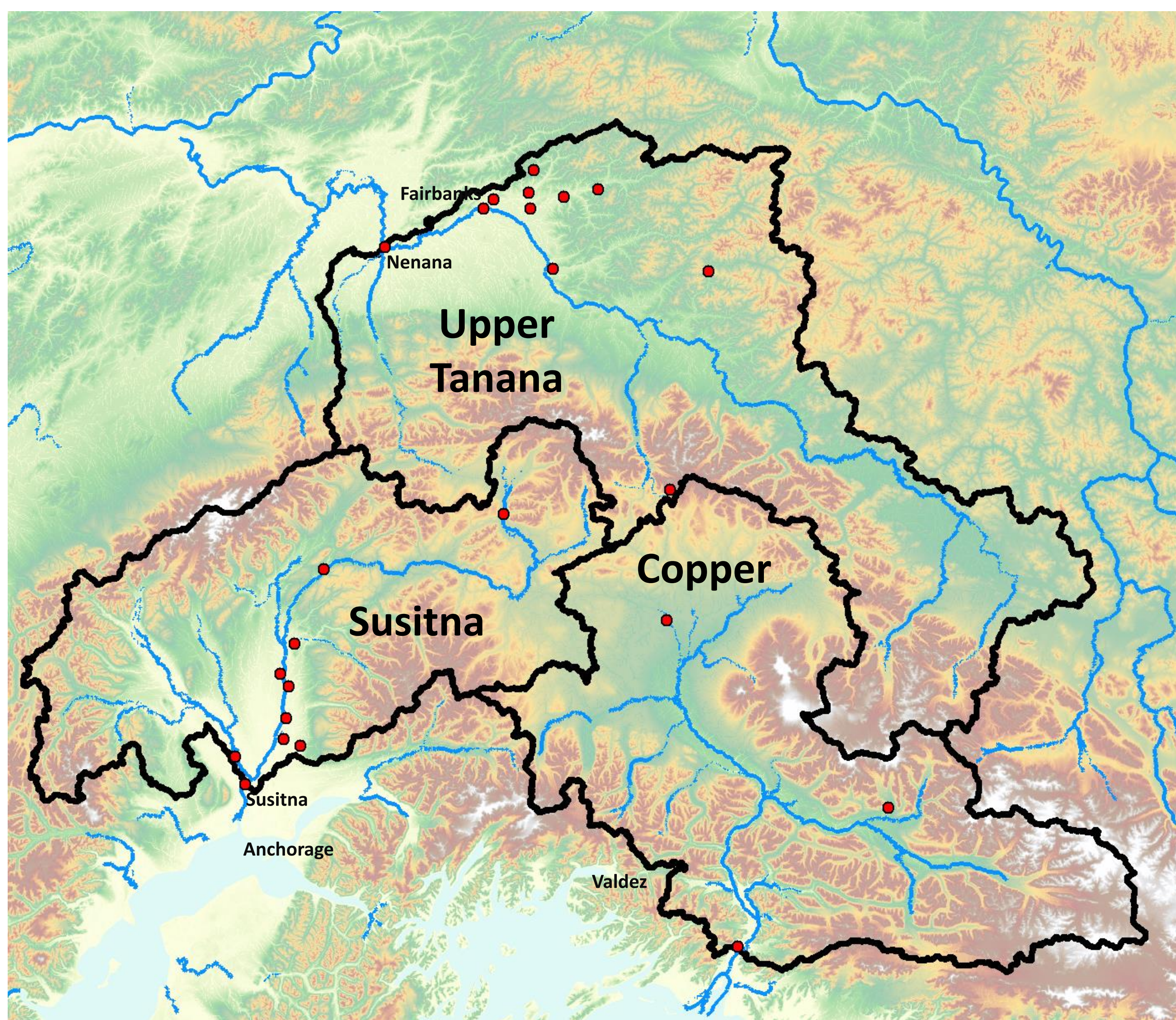


Figure 2. Model domain extent showing current USGS stream gauge sites (red dots) and SWOT observable rivers (blue)(Allen and Pavelsky, 2015).

## 2. Challenges of Hydrological Modeling in Alaska

- Large remote areas with severe lack of in-situ observations (e.g., soil moisture and streamflow) for model initialization
- Rivers and soils are frozen for many months of the year
- Frequent ice jams
- Rapid snowmelt
- Braided rivers with variable width/geometry

## 3. Model Configuration and Calibration

- South-central Alaska domain includes upper Tanana, Susitna, and Copper River basins (Figure 2)
- Offline WRF-Hydro (version 4.0) coupled with Noah-MP
  - 2 arc-second National Elevation Dataset (NED)(USGS, 2017) regridded to 250 m for WRF-Hydro subsurface flow, overland flow, and channel routing
  - 1 km resolution land surface model (grids created using WRF Preprocessing System)
  - Diffusive wave gridded routing
  - Baseflow bucket model
- Case studies:
  - Tanana Valley Flood (July-August 2008)(Plumb and Rundquist, 2009)
  - South-Central Alaska Flood (September 2012)(Jacobs et al., 2016)
  - Susitna Valley Flood (November 2015)(Jacobs et al., 2016)
- Calibrate most sensitive parameters (Rafieeinassab, 2017) using National Center for Atmospheric Research (NCAR) NWM calibration scripts (negative weighted mean Nash-Sutcliffe Efficiency (NSE) and log NSE):
  - Clapp-Hornberger B exponent (bexp)
  - Soil moisture maximum (smcmax)
  - Saturated soil conductivity (dksat)
  - Soil infiltration parameter (refkdt)
  - Soil drainage parameter (slope)
  - Retention depth (RETDEPRTFAC)
  - Saturated soil lateral conductivity (LKSATFAC)
  - Groundwater bucket model max depth (Zmax)
  - Groundwater bucket model exponent (Expon)
  - Canopy wind parameter (cwpvt)
  - Maximum carboxylation at 25C (vcmx25)
  - Ball-Berry conductance relationship slope (mp)

## 4. Surface Water Ocean Topography (SWOT) Mission

- Wide-swath (120 km) radar altimeter (10 m spatial resolution, <10 cm elevation error) (Biancamaria et al., 2016)
  - Ka-band (35.75 GHz)
  - 21-day repeat cycle with orbit inclination of 77.6° (Figure 3)
- Global coverage of rivers with widths greater than 50-100 meters, including major rivers in Alaska (Figure 2)
- Provide measurements of channel water surface elevation (WSE), width, and slope
- Complement USGS stream gauges and provide observations in remote areas where no gauges are present

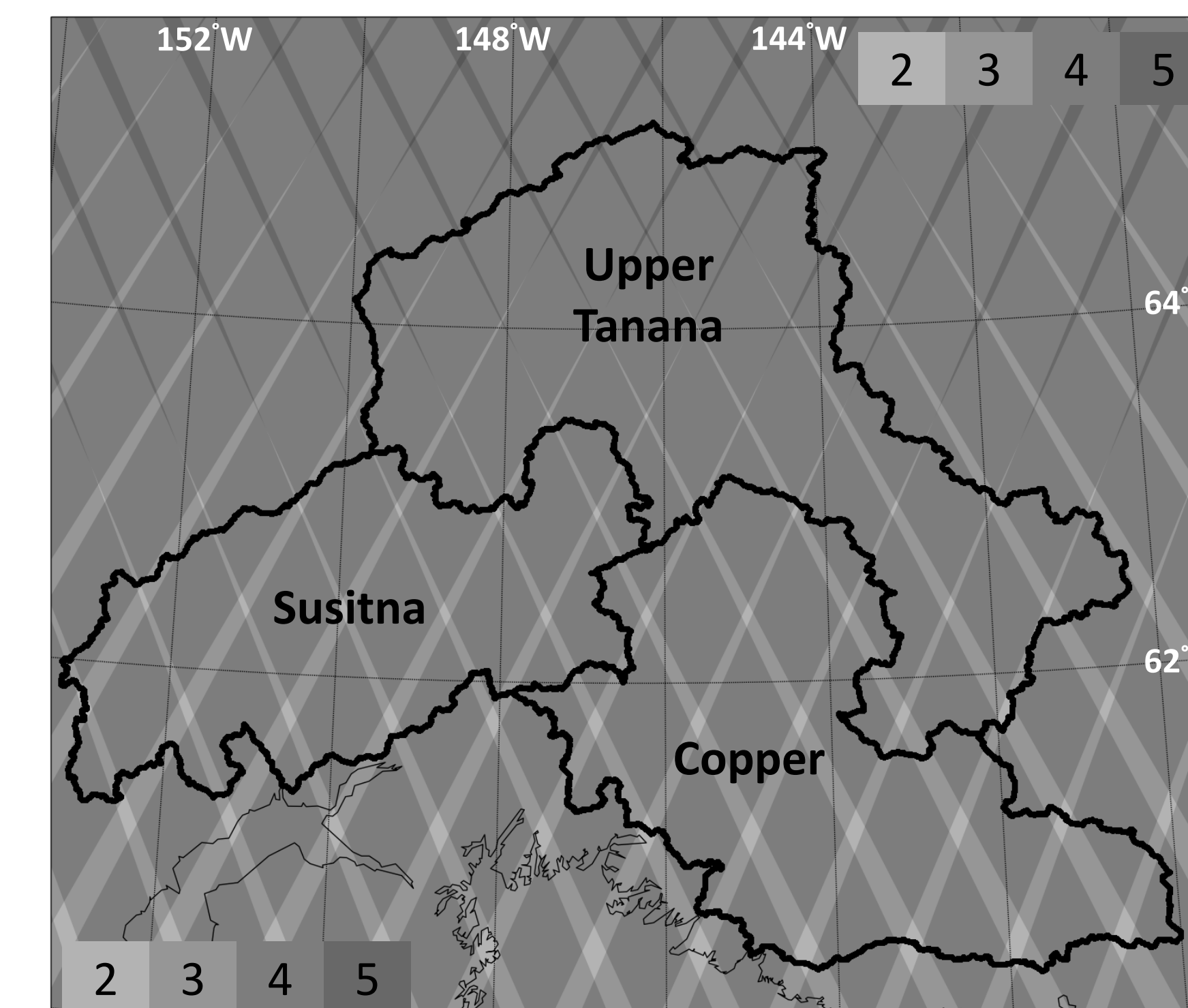


Figure 3. Number of SWOT observations per 21-day repeat cycle over the model domain.

## 5. Next Steps and Future Work

- Spin-up and calibration using Global Land Data Assimilation System Version 2 (GLDAS-2) meteorological forcing (Rodell et al., 2004).
- Perform case study retrospective forecasts
  - Forcing generated from offline WRF (Skamarock et al., 2008) simulation
  - Driven by Global Data Assimilation System (GDAS) atmospheric reanalysis (NOAA NCEP, 2017)
- Assimilate SWOT WSE into WRF-Hydro and identify impacts

## Acknowledgements

This work is supported by NASA Headquarters under the NASA Earth and Space Science Fellowship (NESSF) Program – Grant 80NSSC17K0370.

## References

Allen, G. H., and T. M. Pavelsky (2015), Patterns of river width and surface area revealed by satellite-derived North American river width data set, *Geophys. Res. Lett.*, 42, 395-402, doi:10.1002/2014GL062764. Biancamaria et al 2016

Biancamaria, S., D. P. Lettenmaier, and T. M. Pavelsky (2016), The SWOT mission and its capabilities for land hydrology, *Surv. Geophys.*, 37(2), 307-337, doi:10.1007/s10712-015-9346-y.

Brown, M. E., V. Escobar, S. Moran, D. Entekhabi, P. E. O'Neill, E. G. Njoku, B. Doorn, and J. K. Entin (2013), NASA's Soil Moisture Active Passive (SMAP) mission and opportunities for applications users, *Bull. Amer. Meteor. Soc.*, 94, 1125-1128, doi:10.1175/BAMS-D-11-00049.1.

Gochis, D. J., W. Yu, and D. N. Yates (2013), The WRF-Hydro Model Technical Description and User's Guide, Version 1.0, NCAR Technical Document, 120 pp., NCAR, Boulder, Colo. [Available at [http://www.ral.ucar.edu/projects/wrf\\_hydro/](http://www.ral.ucar.edu/projects/wrf_hydro/)]

Jacobs, A., E. Holloway, and A. Dixon (2016), Atmospheric Rivers in Alaska – Yes they do exist, and are usually tied to the biggest and most damaging rain-generated floods in Alaska, 2016 International Atmospheric River Conference, San Diego, Calif.

NCAR (2017), WRF-Hydro modeling system, National Center for Atmospheric Research Research Applications Laboratory, [https://www.ral.ucar.edu/projects/wrf\\_hydro](https://www.ral.ucar.edu/projects/wrf_hydro).

Niu, G.-Y., et al. (2011), The community Noah land surface model with multiparameterization options (Noah-MP): 1. Model description and evaluation with local-scale measurements, *J. Geophys. Res.*, 116, D12109, doi:10.1029/2010JD015139.

NOAA NCEP, (2017), Global Data Assimilation System (GDAS), National Centers for Environmental Prediction (NCEP), <https://www.ncdc.noaa.gov/data-access/model-data/model-datasets/global-data-assimilation-system-gdas>.

OWP (cited 2017), The National Water Model, <http://water.noaa.gov/about/nwm>.

Plumb, E., and L. Rundquist (2009), The 2008 Tanana River Flood: Where did all the water come from?, *AWRA Spring Specialty Conference*, Anchorage, Alaska, May 4-6, 27.2.

Rafieeinassab, A. (2017), WRF-Hydro calibration, *Personal communication*, Boulder, Colorado, 19 July.

Rodell, M., P. R. Houser, U. Jambor, J. Gottschalck, K. Mitchell, C.-J. Meng, K. Arsenault, B. Cosgrove, J. Radakovich, M. Bosilovich, J. K. Entin, J. P. Walker, D. Lohmann, and D. Toll (2004), The Global Land Data Assimilation System, *Bull. Amer. Meteor. Soc.*, 85(3), 381-394.

Skamarock, W. C., J. B. Klemp, J. Dudhia, D. O. Gill, D. M. Barker, M. G. Duda, X.-Y. Huang, W. Wang, and J. G. Powers (2008), A description of the Advanced Research WRF version 3, NCAR Technical Note, 475, 113 pp., [http://www2.mmm.ucar.edu/wrf/users/docs/arw\\_v3.pdf](http://www2.mmm.ucar.edu/wrf/users/docs/arw_v3.pdf).

USGS (cited 2017), National Elevation Dataset (NED), <https://nationalmap.gov/elevation.html>.