

Lowering Barriers to Visualizing Earth Observation Data with Tethys

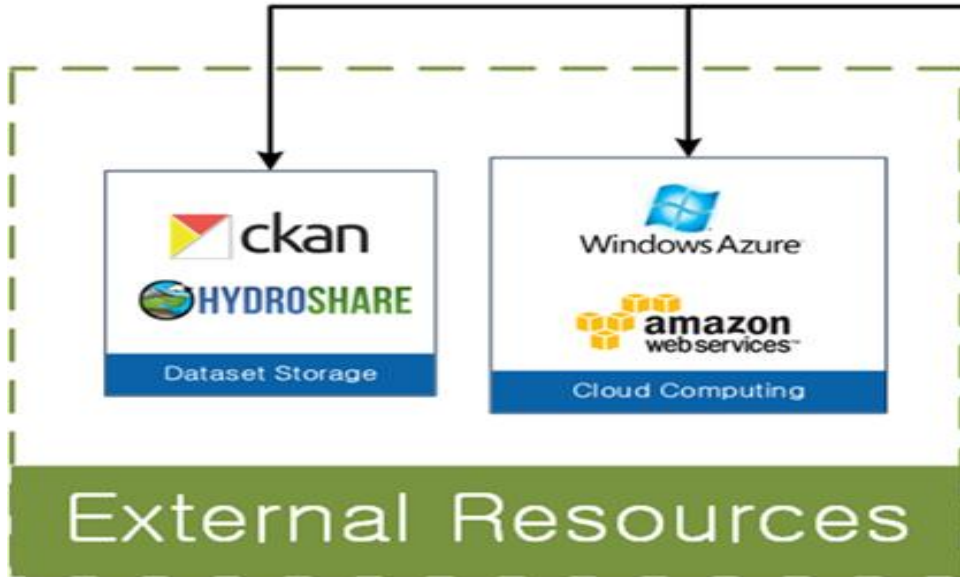
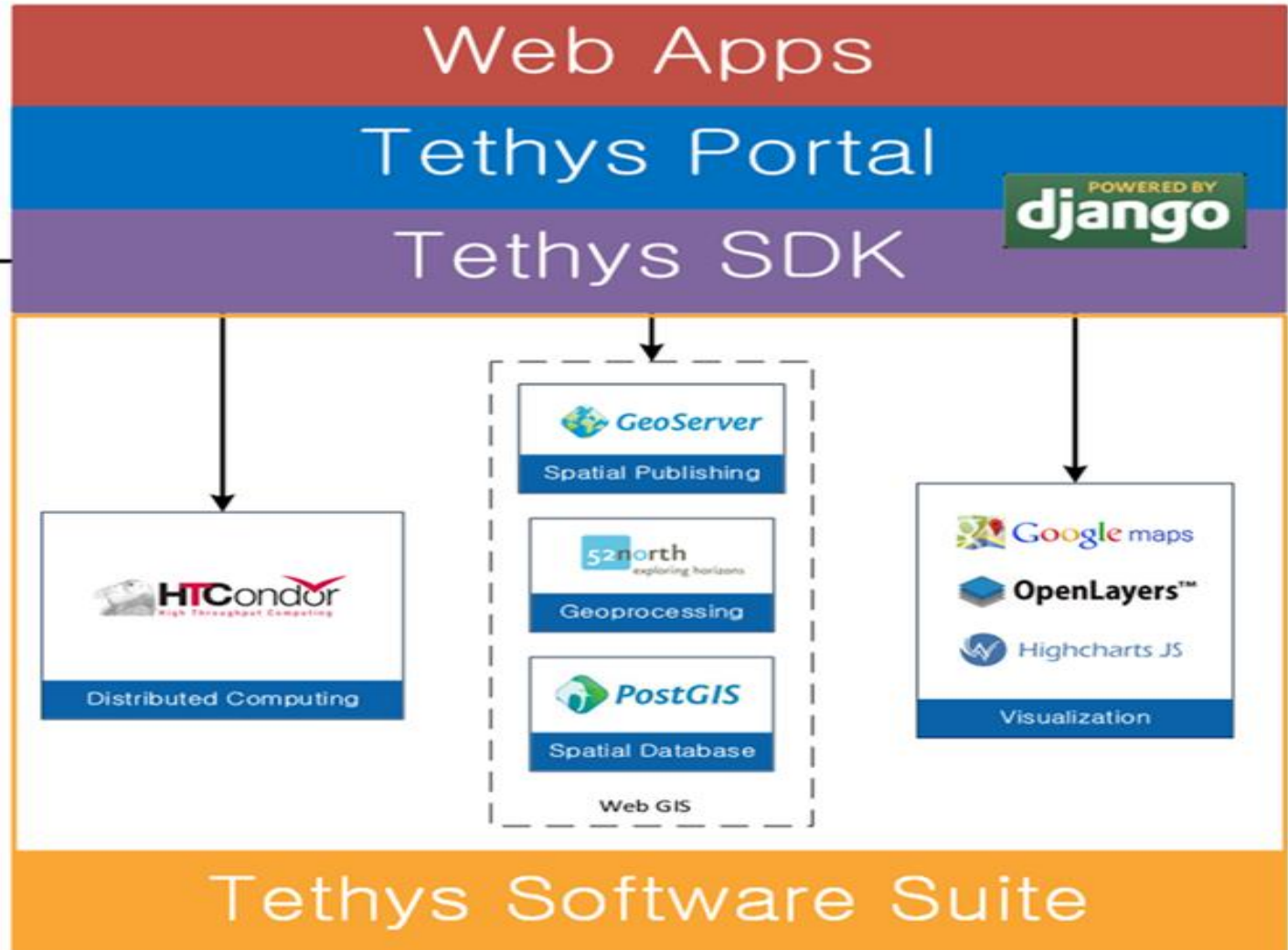
Sarva Pulla

SERVIR Science Coordination Office

Dec 13, 2017



Tethys Platform



Tethys Portal

SERVIR 



SERVIR Tethys Apps Portal

SERVIR GLOBAL Tethys

Log In

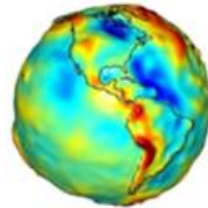
Apps Library



HKH Drought
Index Viewer
Alpha



HydroViewer



GRACE



RHEAS Viewer



Ferlo Ephemeral
Water Body
Monitoring
Dashboard



Copyright © 2017 SERVIR GLOBAL Privacy and Terms of use



USAID
UNITED STATES OF AMERICA



ICIMOD

adpc

GRACE Viewer



App Navigation

Home

Global Map

Select a day

2002 April 16

Map Interaction **None**

Show Plot

Animation Speed(fps): 1.00

Day: 2006 November 16

The main map displays global data from the Gravity Recovery and Climate Experiment (GRACE) satellites. The map is color-coded by region and ocean, with labels for NORTH AMERICA, SOUTH AMERICA, EUROPE, ASIA, AUSTRALIA, Pacific Ocean, Atlantic Ocean, and Indian Ocean. The data is presented as a grid of colored squares, with warmer colors (red/orange) indicating higher values and cooler colors (blue) indicating lower values. The map includes zoom in (+) and zoom out (-) buttons on the left, a share icon on the top right, and an information icon (i) on the bottom right.

Legend Controls

-23.0 -20.7 -18.4 -16.1 -13.8 -11.5 -9.2 -6.9 -4.6 -2.3 2.3 4.6 6.9 9.2 11.5 13.8 16.1 18.4 20.7 23.0

Opacity: 0.7

Colorbar Max: 23

RHEAS Viewer

RHEAS Viewer

Home VIC DSSAT ? ? X

DSSAT Menu

Select a Year

2013

Select a Schema

ken_2013_mam_high

Current Feature: Kenya → Rift Valley → Narok

Select an Ensemble

Median

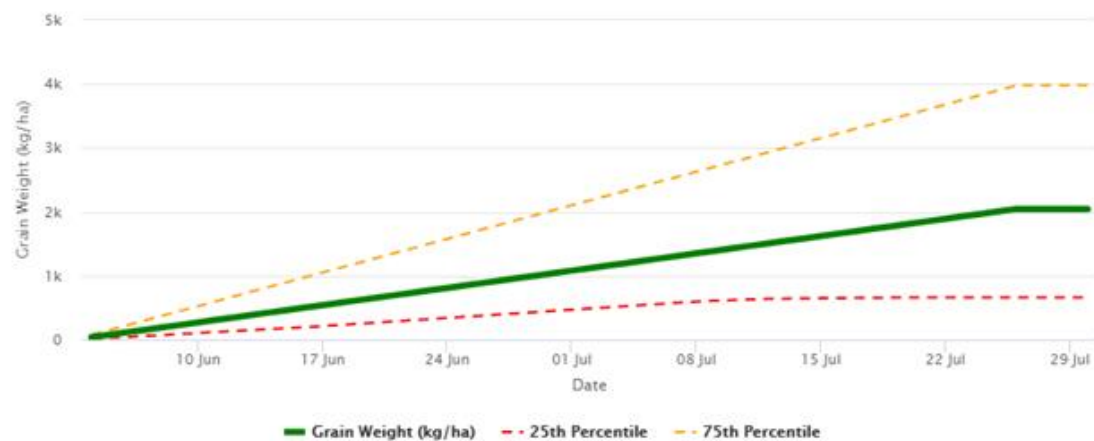
Grain Weight

Water Stress

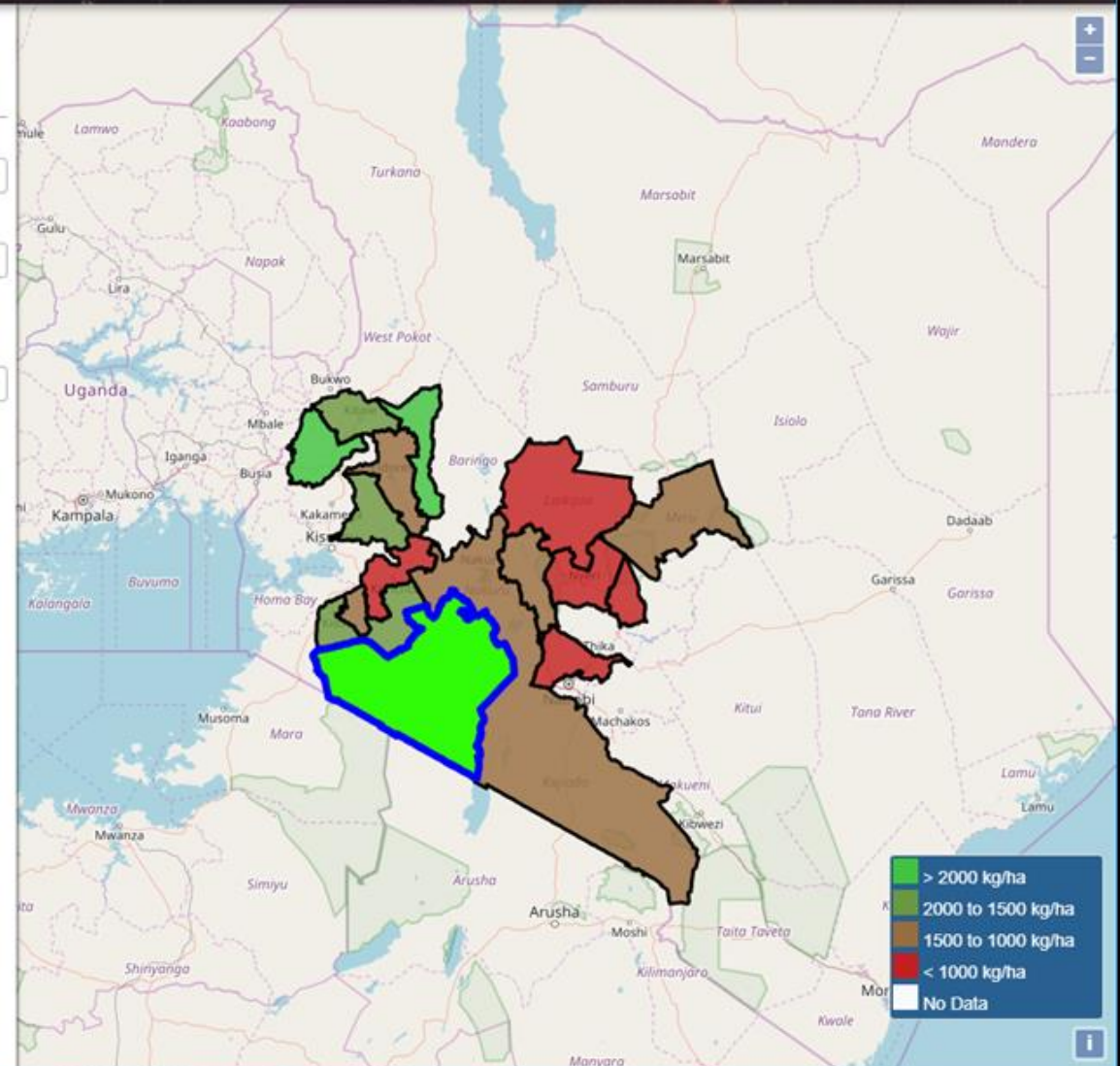
LAI

25th Percentile Ensemble: 37, Median Ensemble: 39, 75th Percentile Ensemble: 19

Grain Weight



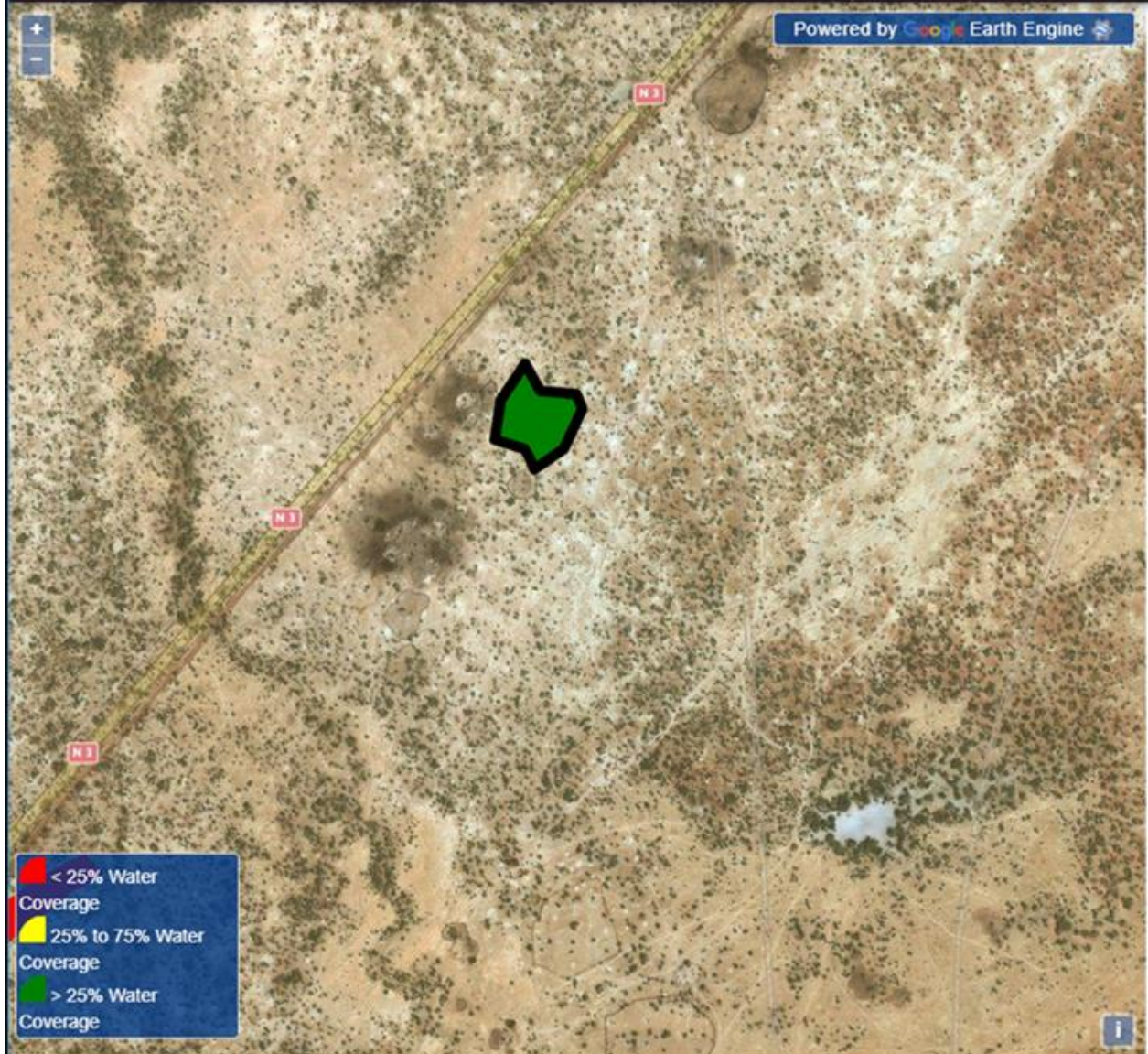
Highcharts.com



Water Watch



Ferlo Ephemeral Water Body Monitoring Dashboard



Current Zoom level = 16.

Note: The zoom level needs to be 16 or greater to retrieve data.