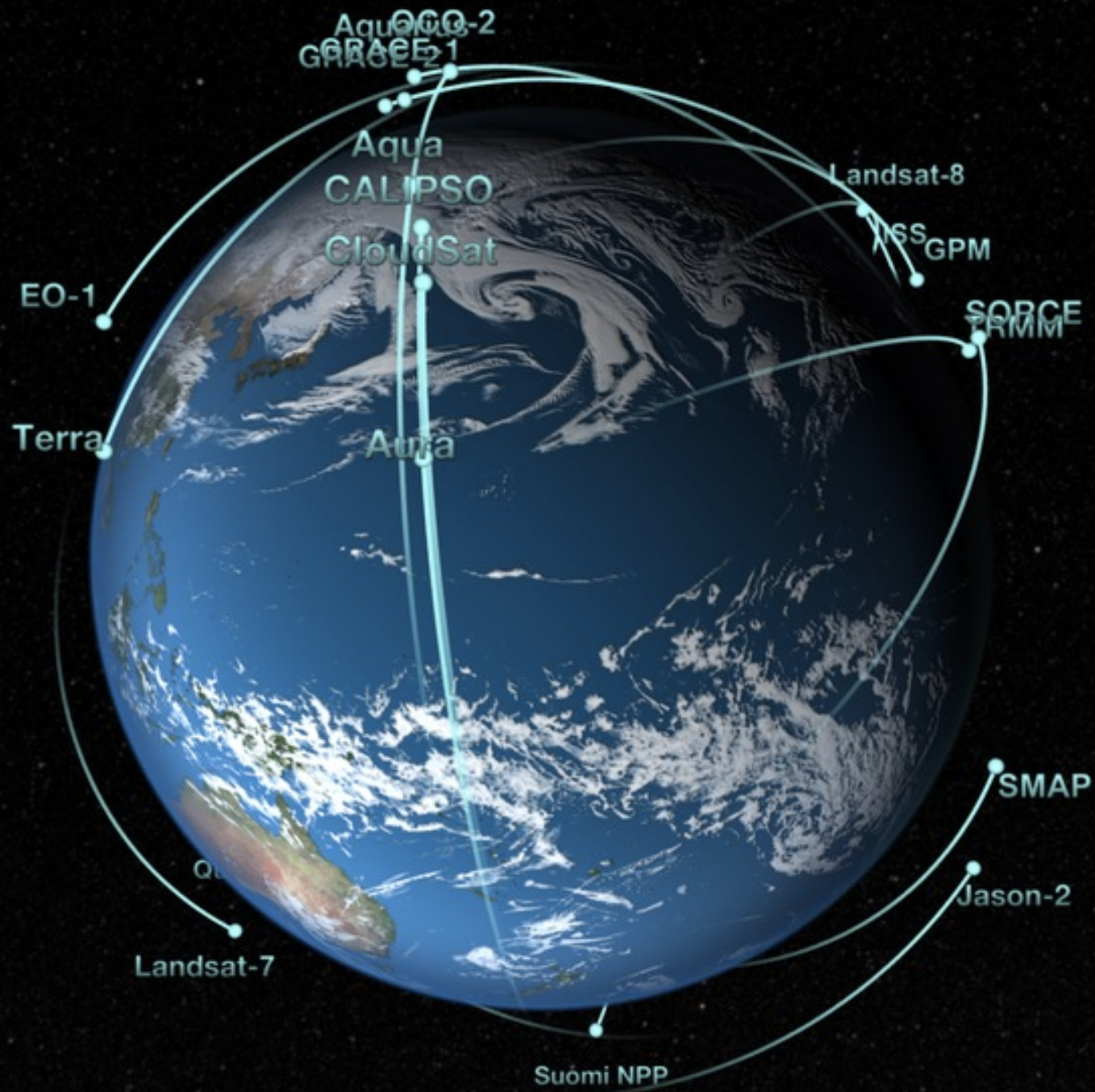


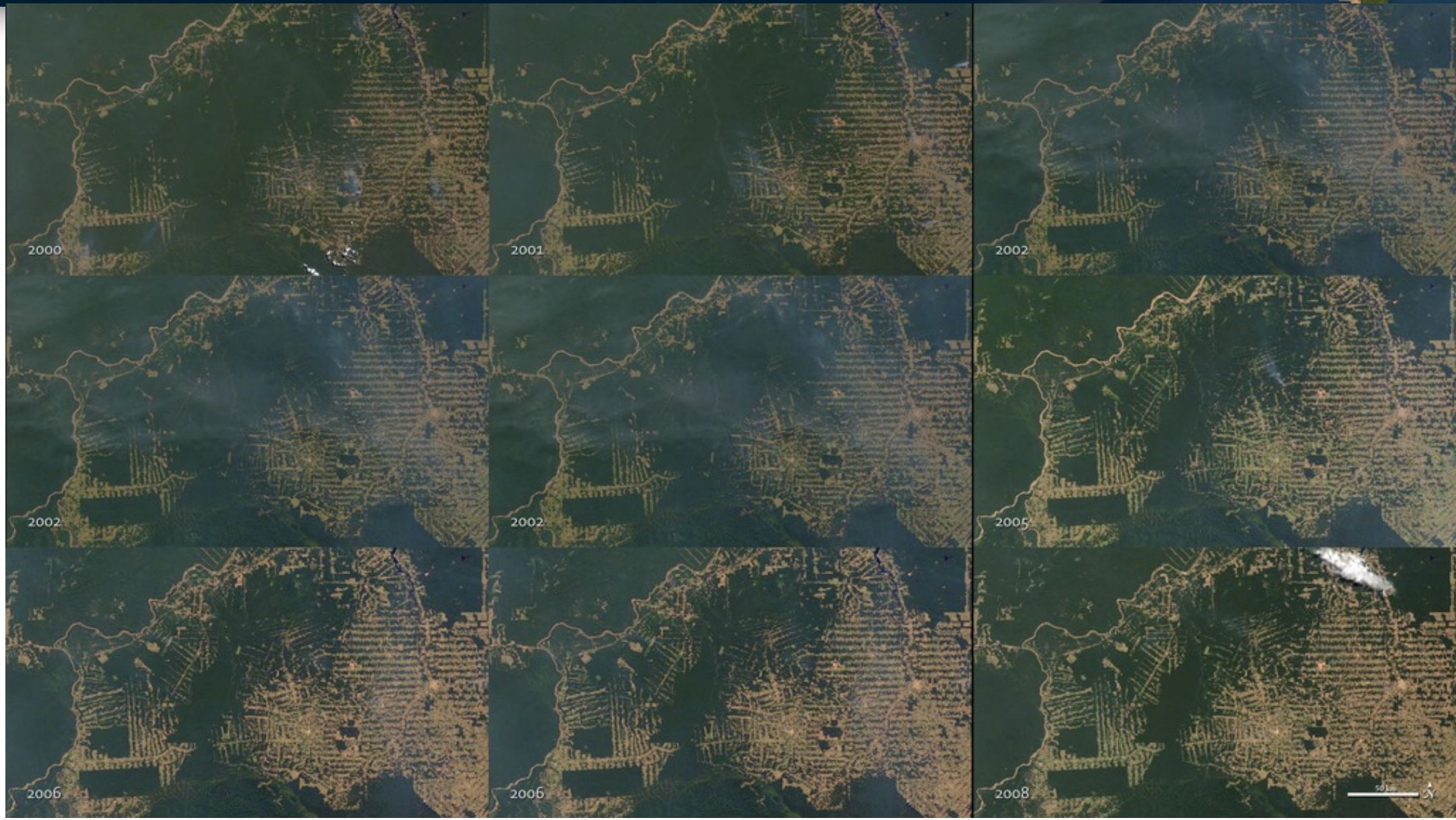
Collect Earth Online: A Global Collaboration to Halt Deforestation

Daniel Irwin
NASA/MSFC





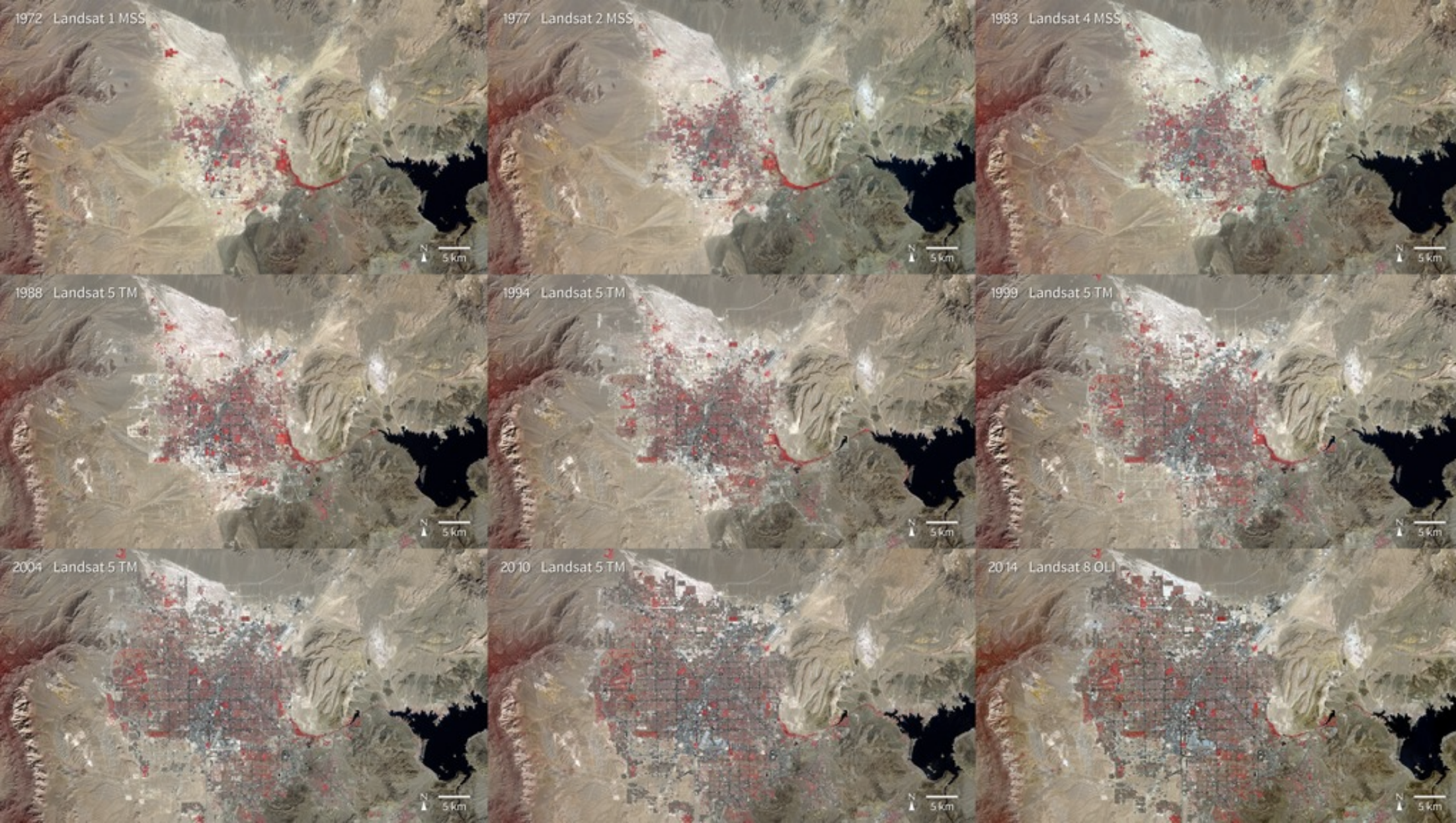
Our Changing Planet-Brazil



Our Changing Planet-Dubai



Our Changing Planet-Las Vegas



Collect Earth Online-Home Page

The screenshot displays the Collect Earth Online Home Page. At the top, there is a navigation bar with links for Home, About, Support, and Account. The user is logged in as admin@sig-gis.com. The main content area is titled "Institutions" and features a list of projects on the left and a world map on the right. The list includes "Spatial Informatics Group (SIG)" with sub-projects like "Mekong River Region", "California, USA", "Mongolia", "FAO Regional Subset Collection", "Bing Maps Test", "HB BlowDown", "Heilongjiang", "Central Japan", and "NASA SERVIR Chipset Test", each with an "Edit" button. Below this is "BillyZ's Coders". The world map shows several blue location markers with the number "1" on it, indicating project locations across North America, Europe, and Asia. A "CHOOSE A PROJECT TO GET STARTED" button is visible at the top right of the map area.

Collect Earth Online

Home About Support Account

admin@sig-gis.com Logout

Institutions

Create New Institution

Spatial Informatics Group (SIG)

- Mekong River Region Edit
- California, USA Edit
- Mongolia Edit
- FAO Regional Subset Collection Edit
- Bing Maps Test Edit
- HB BlowDown Edit
- Heilongjiang Edit
- Central Japan Edit
- NASA SERVIR Chipset Test Edit

BillyZ's Coders

CHOOSE A PROJECT TO GET STARTED

5000 km

Collect Earth Online-Project Setup

PROJECT DASHBOARD

PROJECT DESIGN

PROJECT INFO

Name:

Description:

PROJECT VISIBILITY

Privacy Level

- Public: All Users
- Private: Group Admins
- Institution: Group Members
- Invitation: Coming Soon

PROJECT AGI

Hold CTRL and click-and-drag a bounding box on the map

PROJECT IMAGERY

Basemap Source:

PLOT DESIGN

Spatial Distribution

- Random
- Gridded
-

Plot Shape

- Circle
- Square

Plot Diameter (m):

Number of plots:

Plot spacing (m):

SAMPLE DESIGN

Spatial Distribution

- Random
- Gridded

Samples per plot:

Sample resolution (m):

Project Stats

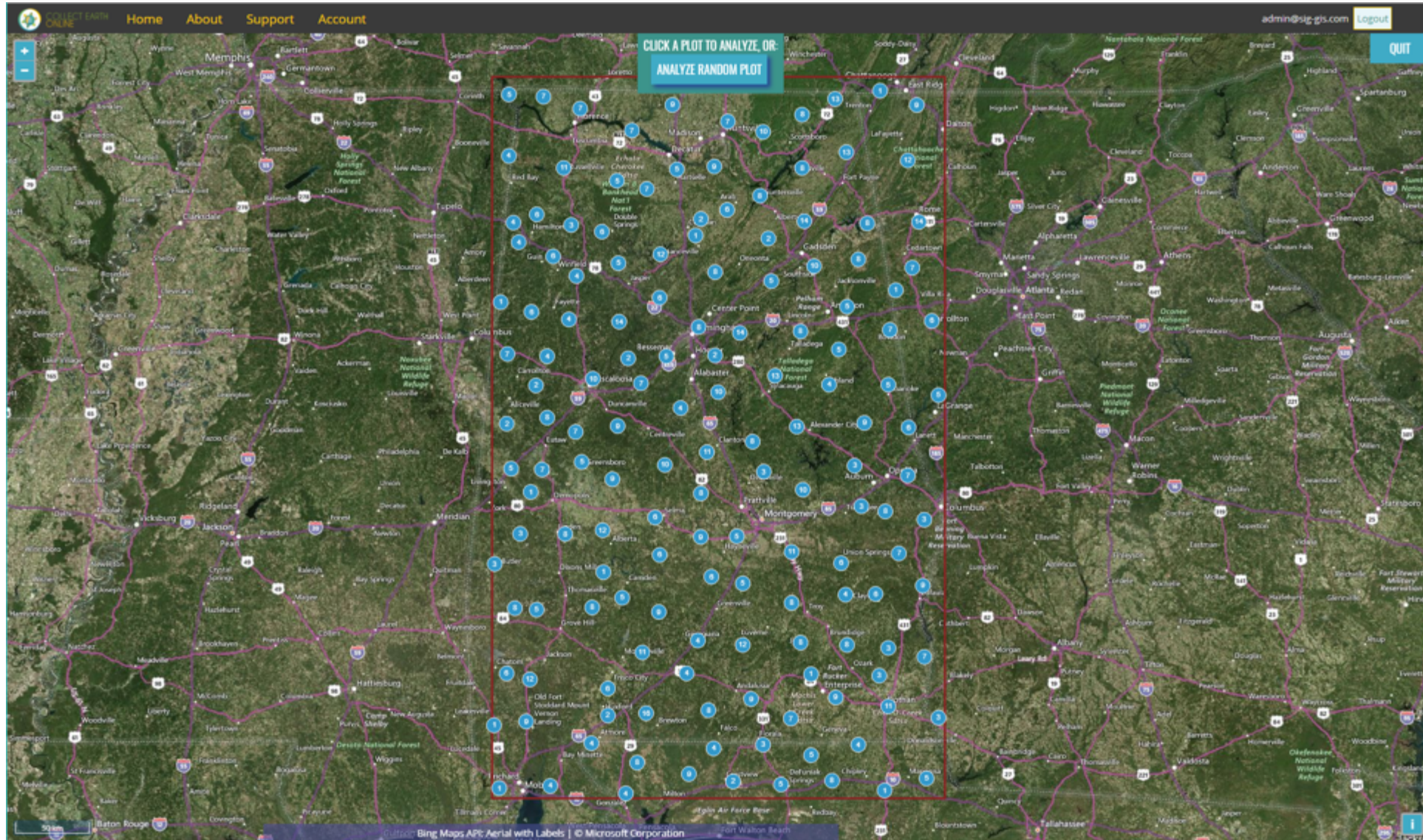
Members	2	Contributors	0
Total Plots	3	Date Created	
Flagged Plots	0	Date Published	
Analyzed Plots	0	Date Closed	
Unanalyzed Plots	3	Date Archived	

Project Management

SAMPLE VALUE: LAND USE

Name	Color	Reference Image
A	Red	
B	Green	
C	Yellow	
D	Light Green	
E	Teal	
F	Blue	
G	Purple	

Collect Earth Online-Random Plot Funtion



Collect Earth Online-Data Collection

The screenshot displays the Collect Earth Online web application interface. At the top, there is a navigation bar with links for Home, About, Support, and Account, along with a user profile 'admin@sig-gis.com' and a Logout button. The main area is dominated by a satellite map showing a landscape with a road, fields, and a pond. Numerous blue dots are scattered across the map, representing data collection points. A text overlay on the map reads 'SELECT EACH DOT TO CHOOSE VALUE'. To the right of the map, there are several control panels:

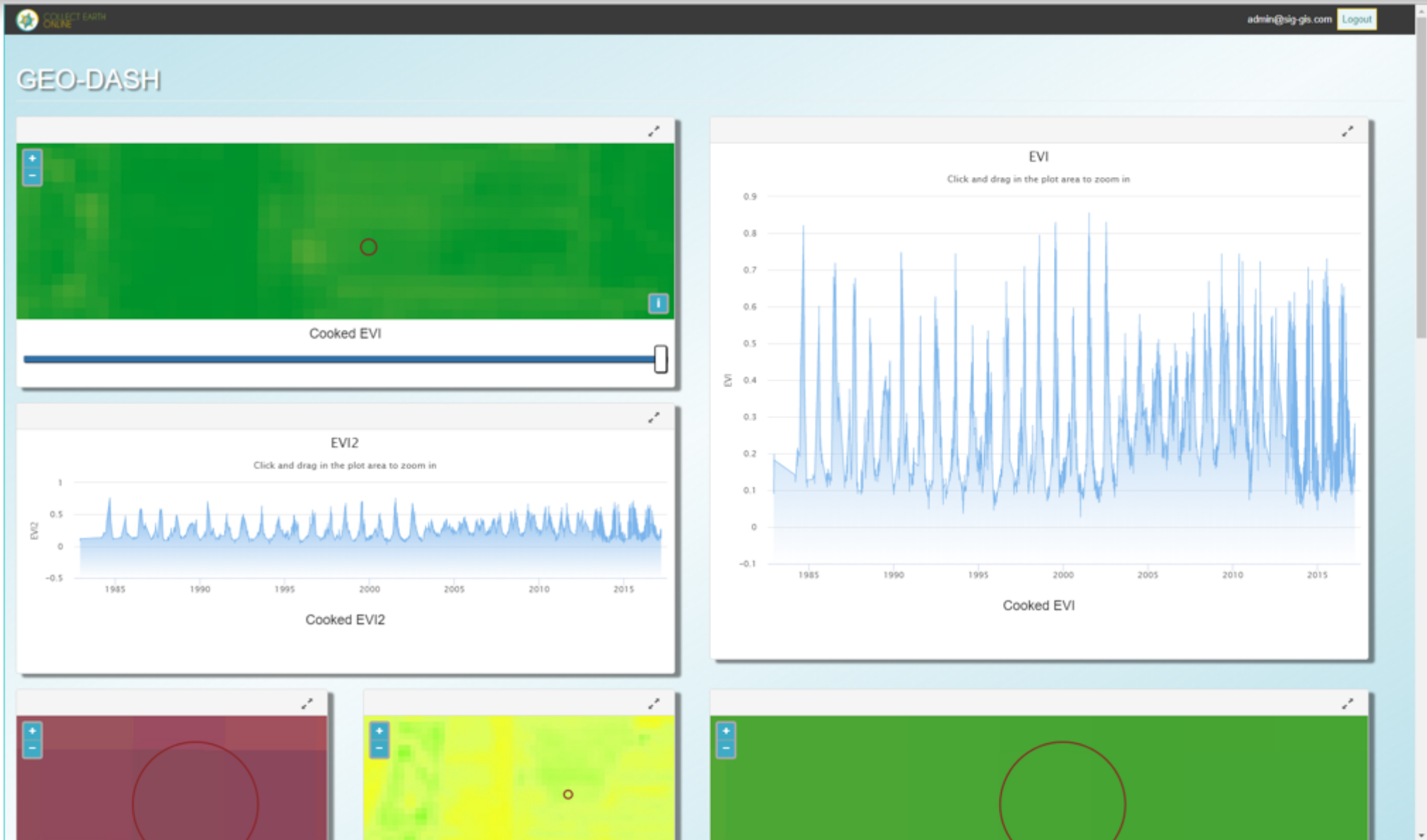
- PROJECT STATS:** A table showing project progress.
- PLOT NAVIGATION:** Buttons for 'SKIP', 'SAVE', and 'FLAG PLOT AS BAD'.
- IMAGERY OPTIONS:** A dropdown menu currently set to 'BingAerialWithLabels'.
- SAMPLE VALUE: GENERAL:** A grid of color-coded categories for data collection.

At the bottom of the map, there is a scale bar indicating '20 m' and a footer with the text 'Bing Maps API: Aerial with Labels | © Microsoft Corporation'.

Project	Alabama
Plots Assigned	6 (0.30%)
Plots Flagged	0 (0.00%)
Plots Completed	6 (0.30%)
Plots Total	2000

SAMPLE VALUE: GENERAL	
FOREST	VEGETATION
WATER	BUILDING
ROAD	

Collect Earth Online-GeoDash



Making Our World a Better Place

