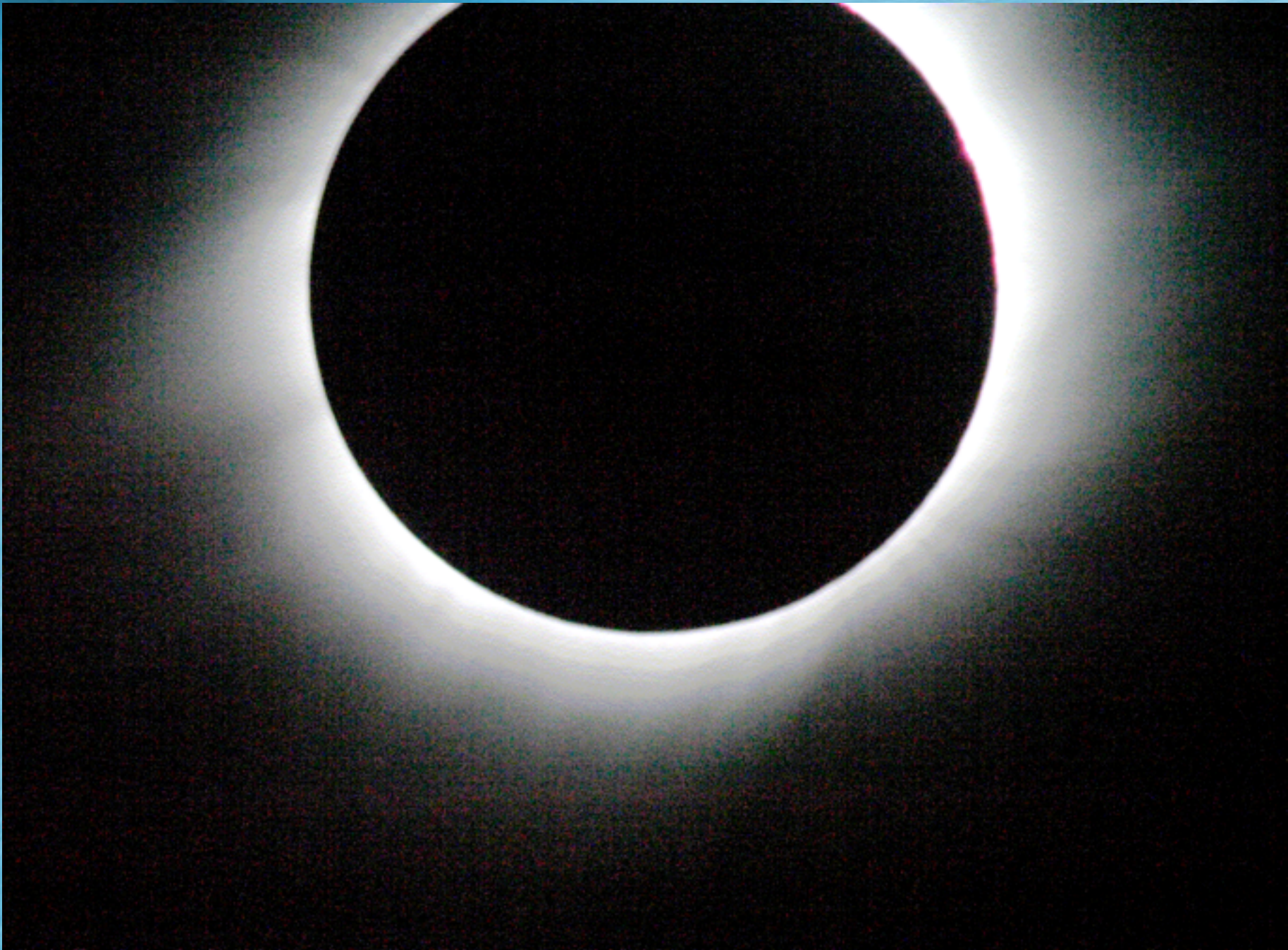


Some Astrophotography Pictures (and a few terrestrial ones too)

Alphonse C. Sterling

The Sun

Ghana (near Cape Coast), 2006



Gangsu Province, China, 2008



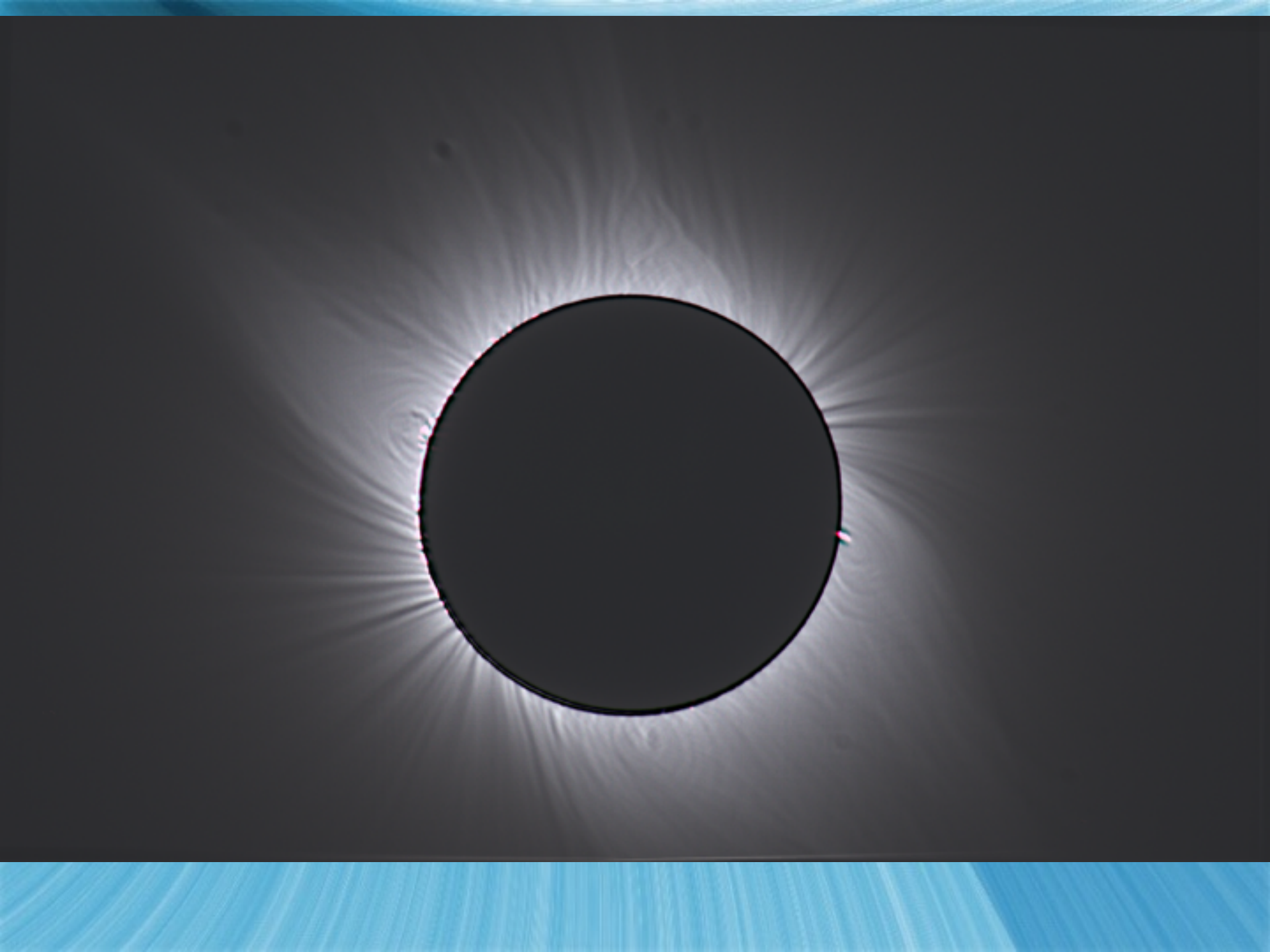




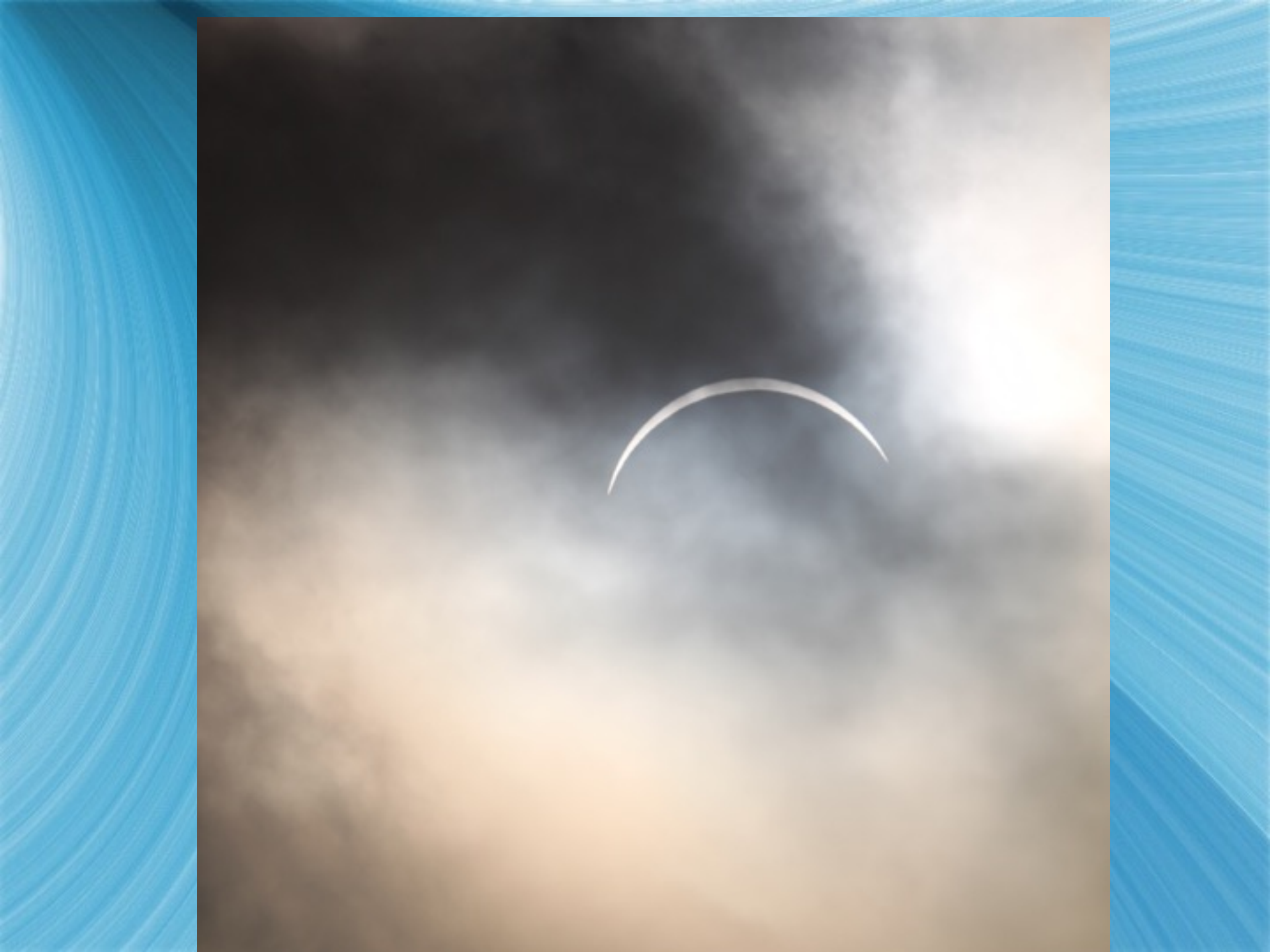








Mangaia, Cook Islands, 2010

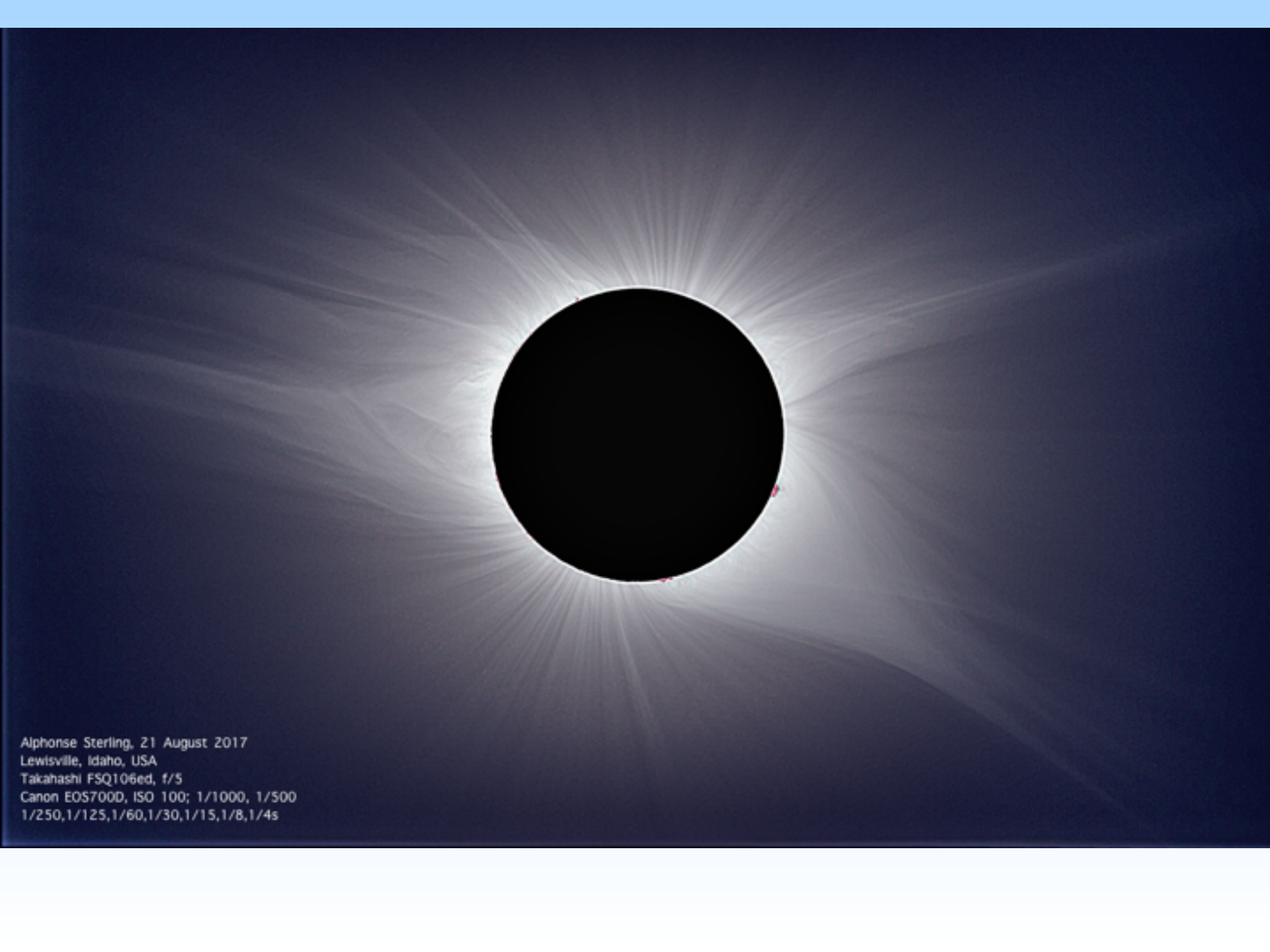


Lewisville, Idaho, 21 August 2017





(A. Sterling, Idaho)



Alphonse Sterling, 21 August 2017
Lewisville, Idaho, USA
Takahashi FSQ106ed, f/5
Canon EOS700D, ISO 100; 1/1000, 1/500
1/250, 1/125, 1/60, 1/30, 1/15, 1/8, 1/4s

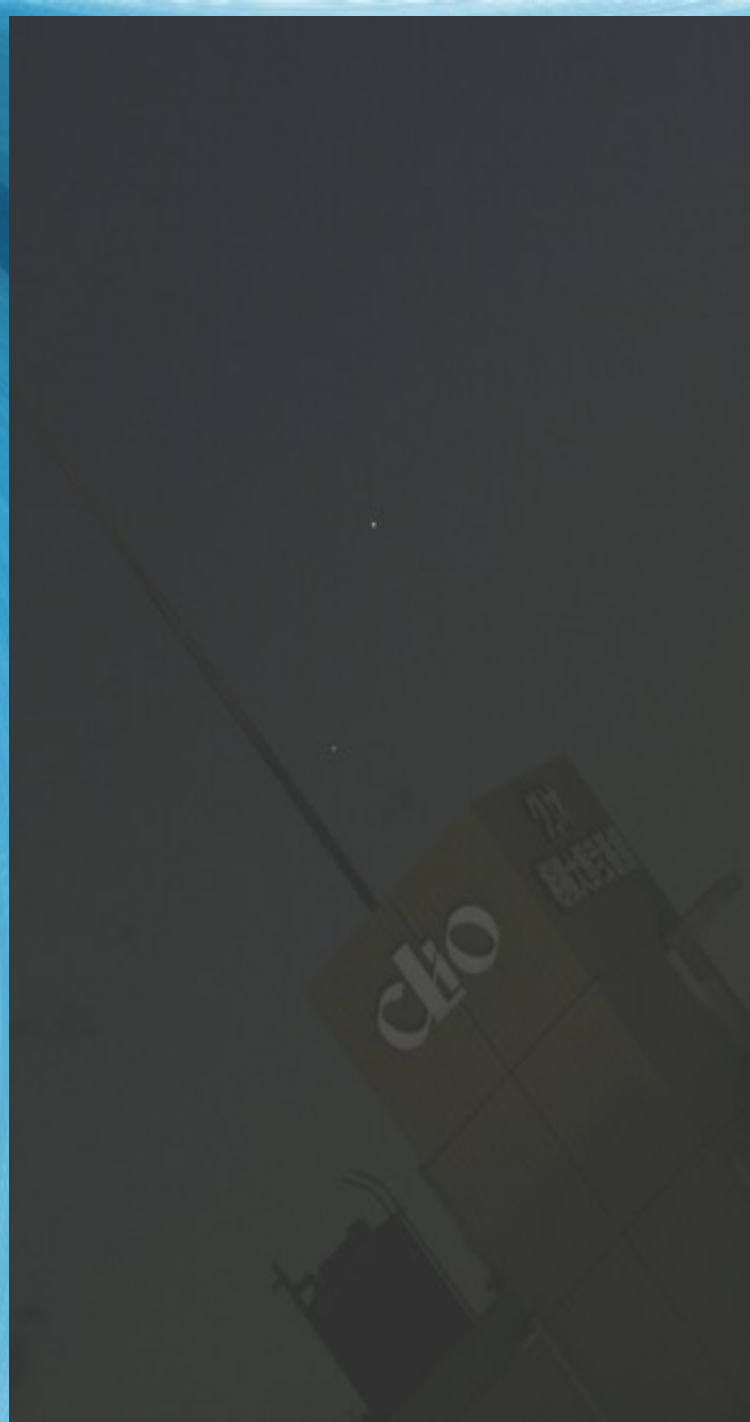
A spectral plot showing emission lines. The plot is a curved band of light with a color gradient from red at the top to blue at the bottom. Four specific lines are labeled with white text and white arrows pointing to their respective positions on the spectrum.

H α 6563
He I 5876(D β)
H β 4861
H γ 4340

Other Solar System Objects

Mercury

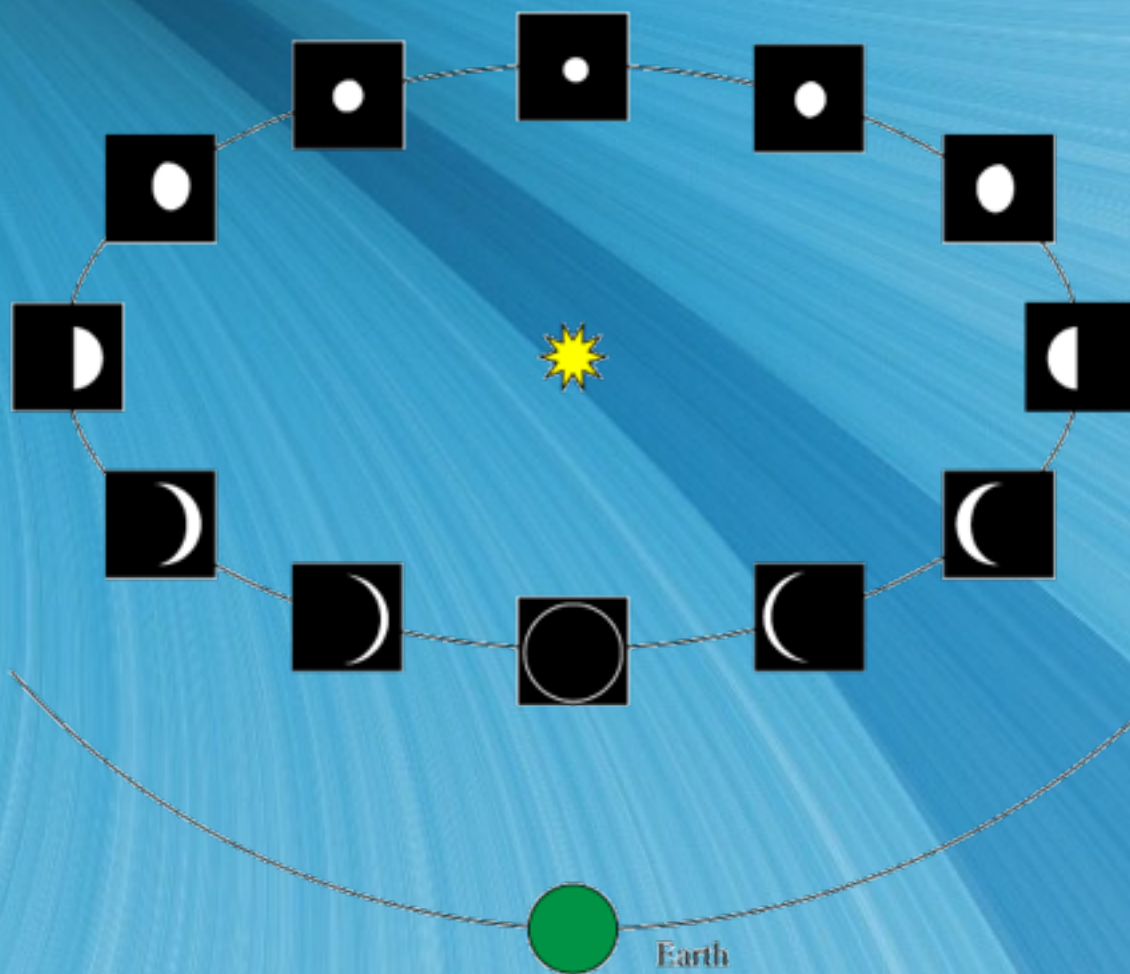
Jupiter (top)
and Mercury:
12/31/2008,
5:25 pm JST



Suisei, WO98, 110910



Phases of Venus as Seen From Earth



Venus

Venus: 08/26/2010



Kinsei, VC200L, 100826

Venus: 09/19/2010

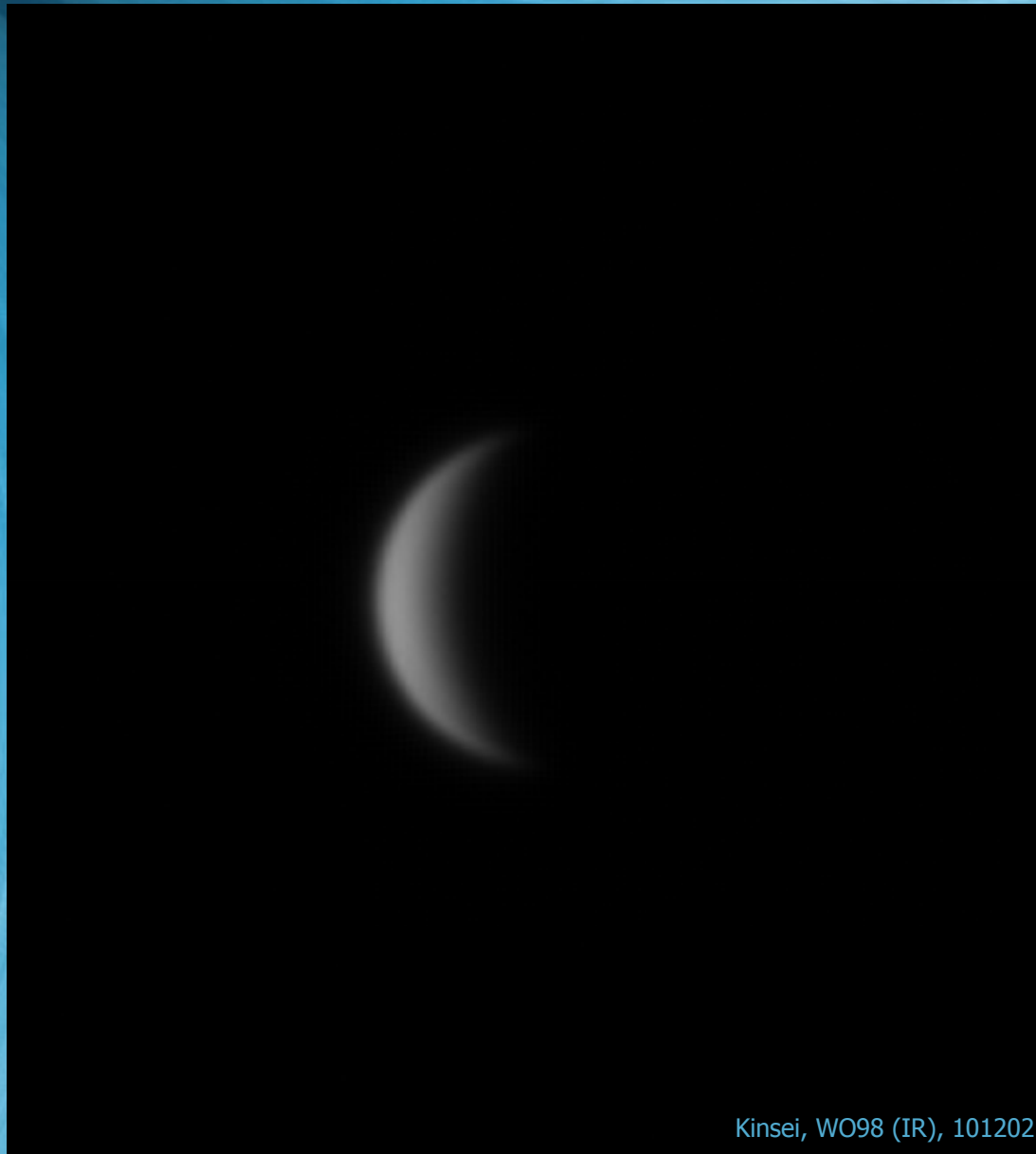


Venus: 11/25/2010



Kinsei, WO98, 101125

Venus: 12/02/2010



Kinsei, WO98 (IR), 101202

Earth









20 May 2012 22:35:02 UT



20 May 2012 22:35:22 UT







(~24 miles)

Our Moon















2018 January 31 Lunar Eclipse (Huntsville, AL, USA)





Alphonse C. Sterling
2018 January 31, Huntsville, Alabama, USA
Takahashi 106 ED, f/5; Canon EOS 700D









Alphonse C. Sterling
2018 January 31, Huntsville, Alabama, USA
Takahashi 106 ED, f/5; Canon EOS 700D

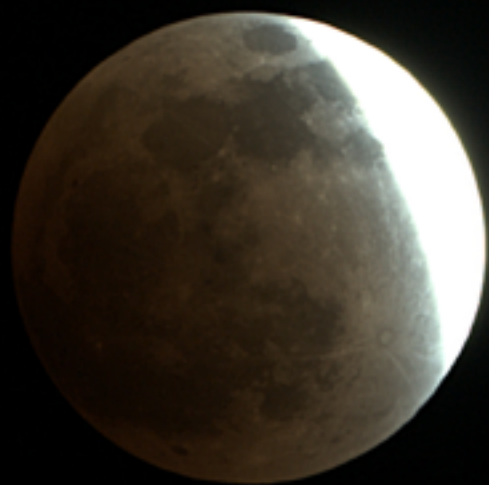


2011 December 10 Lunar Eclipse (Outside Tokyo)







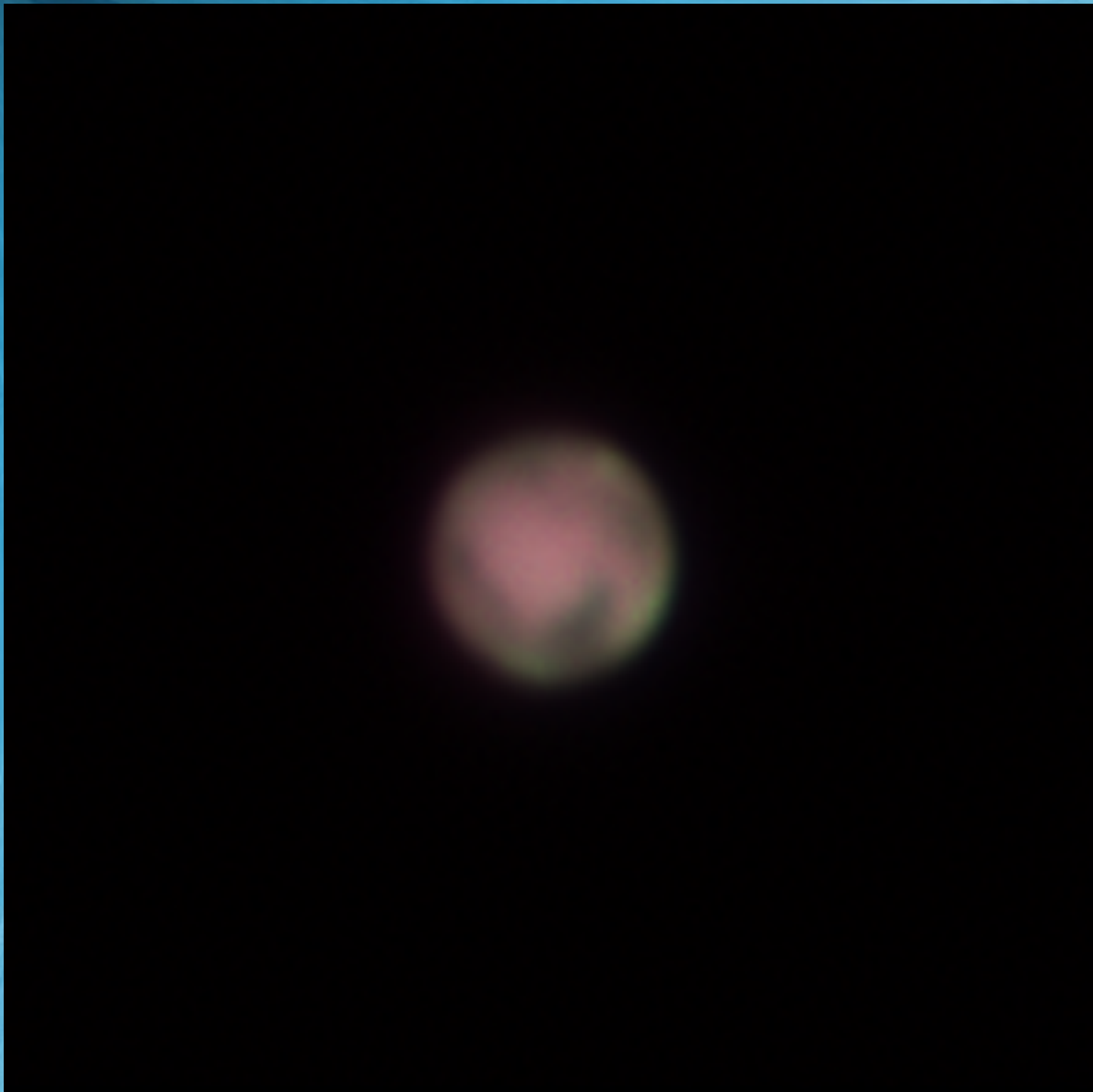




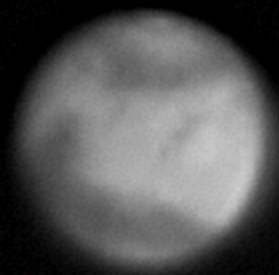




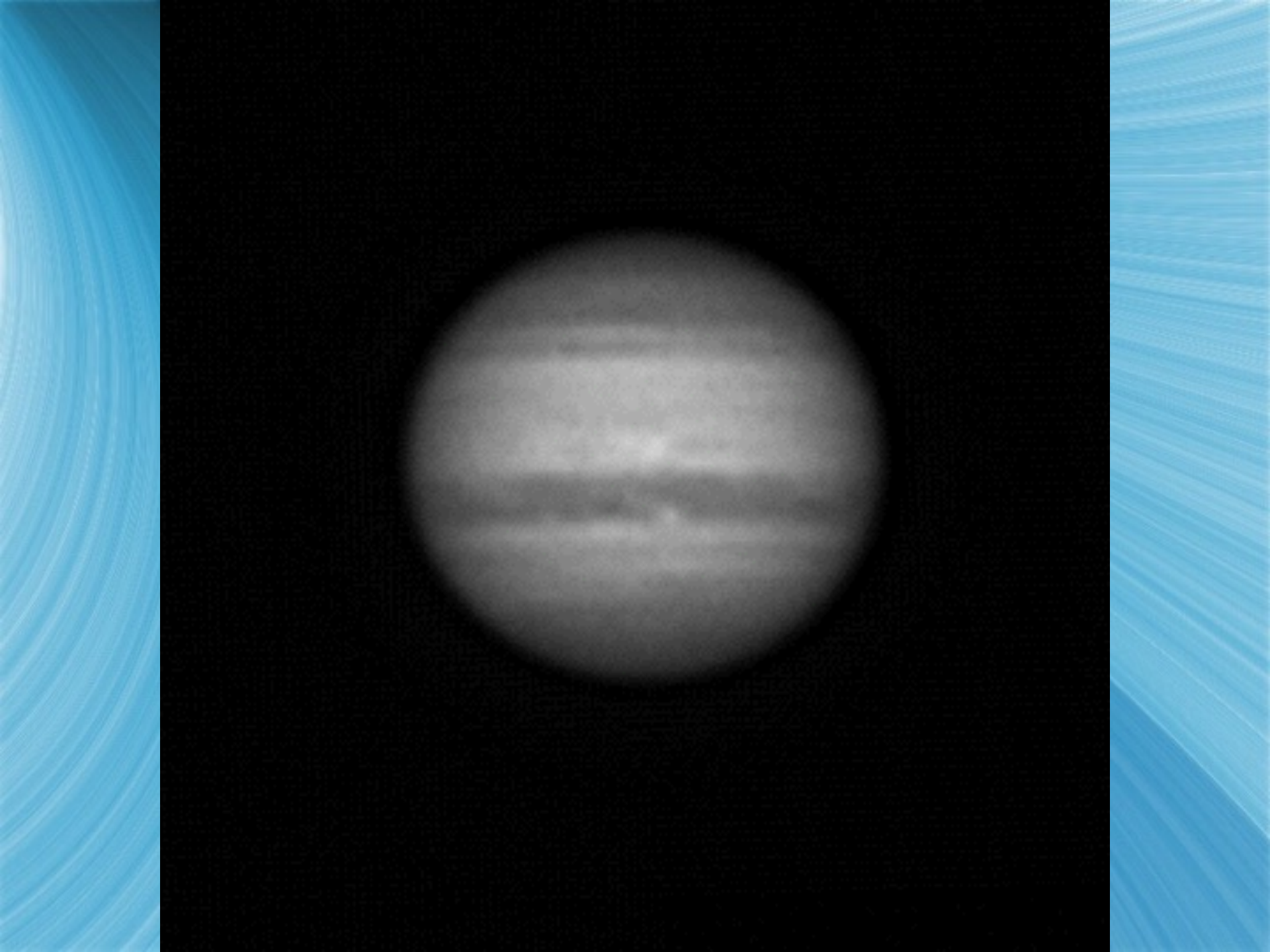
Mars

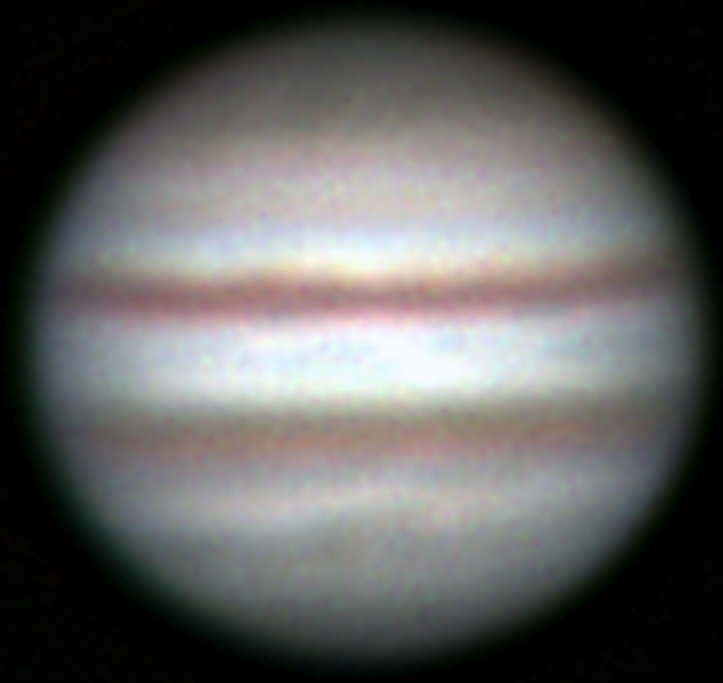


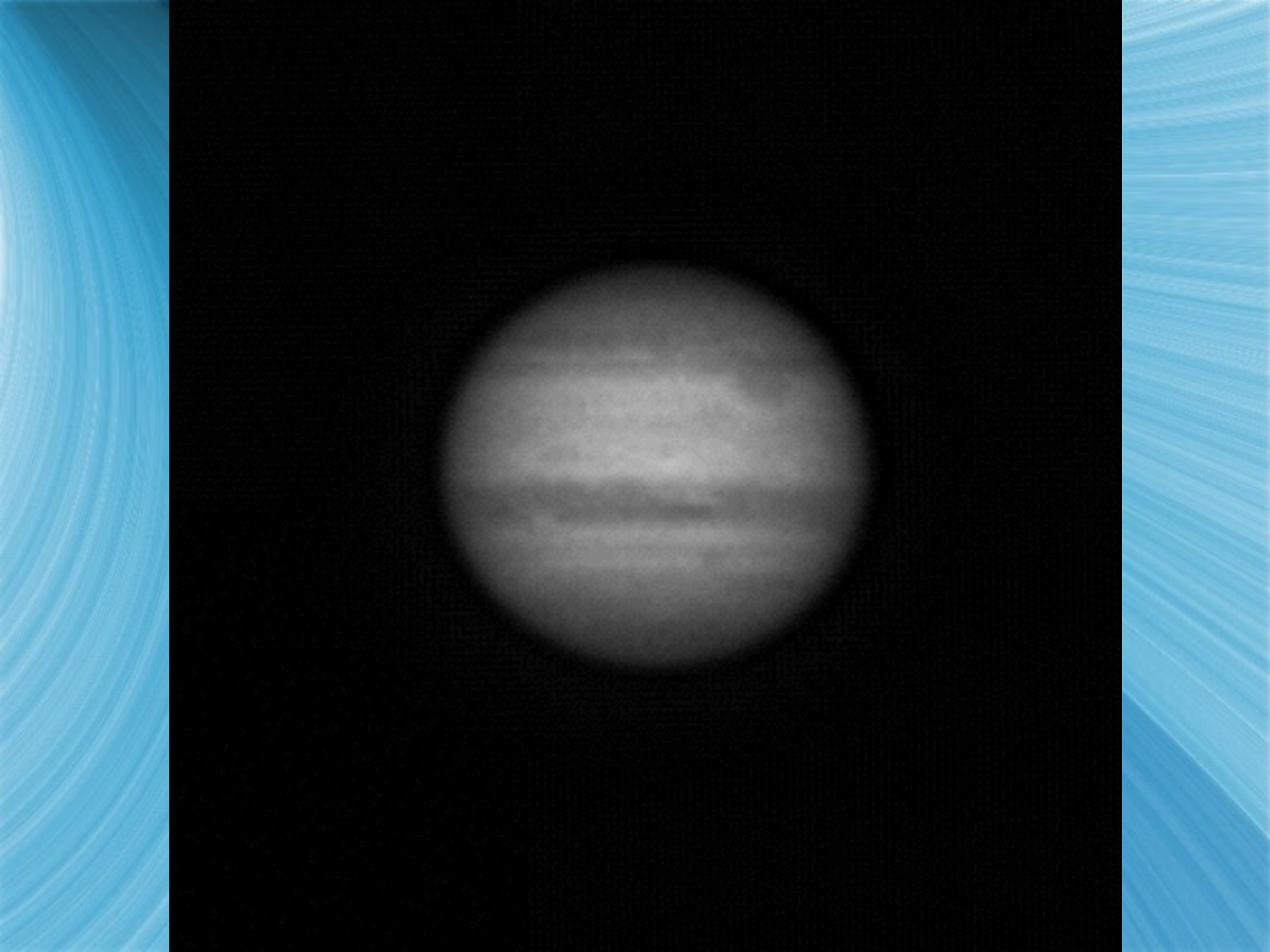




Jupiter

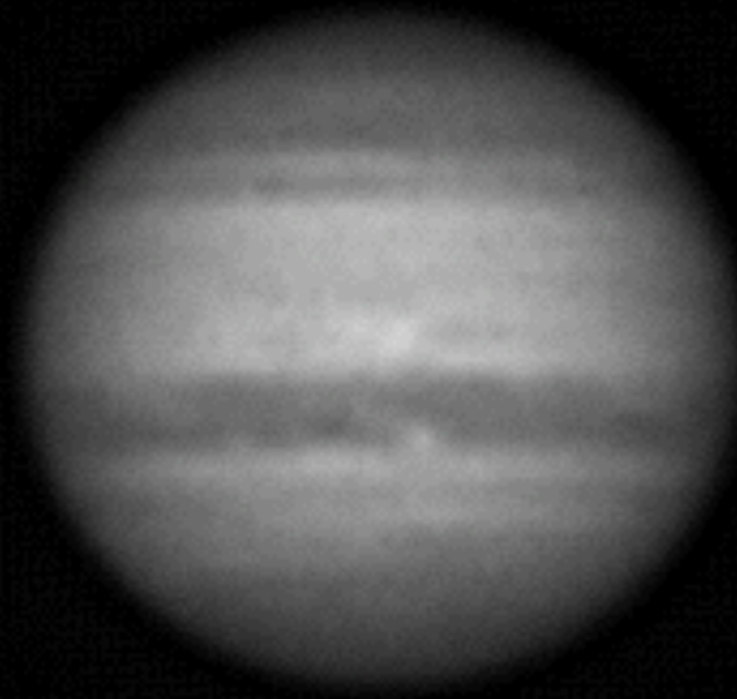




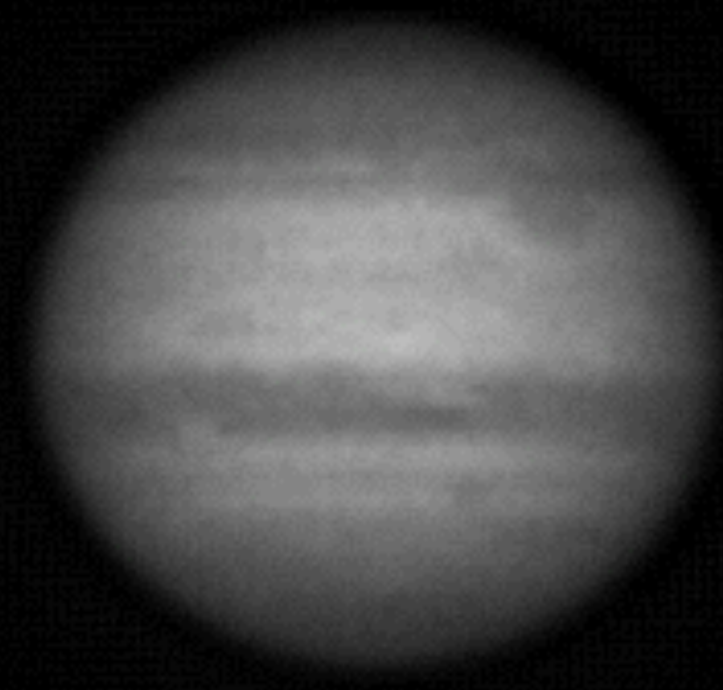


Jupiter's Rotation

21 Sep 2009, 21:41 JST



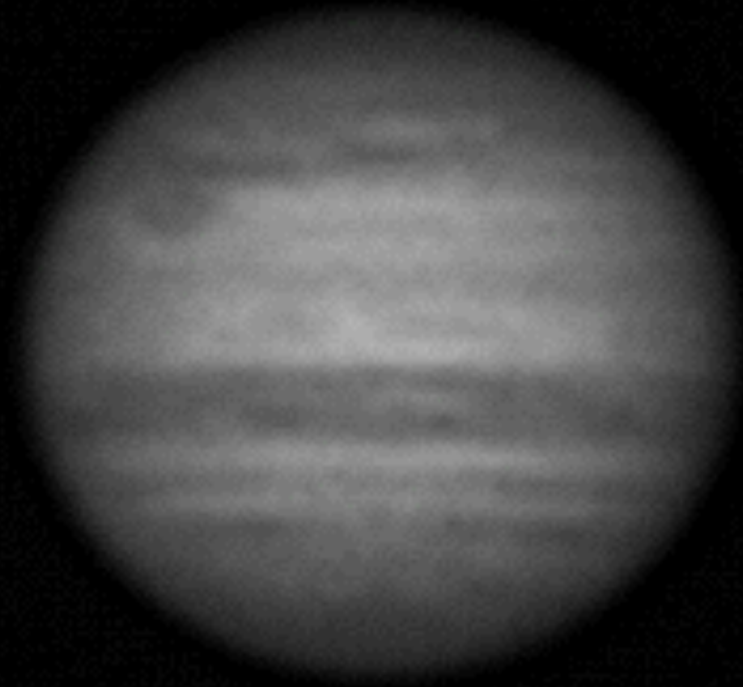
21 Sep 2009, 22:46 JST

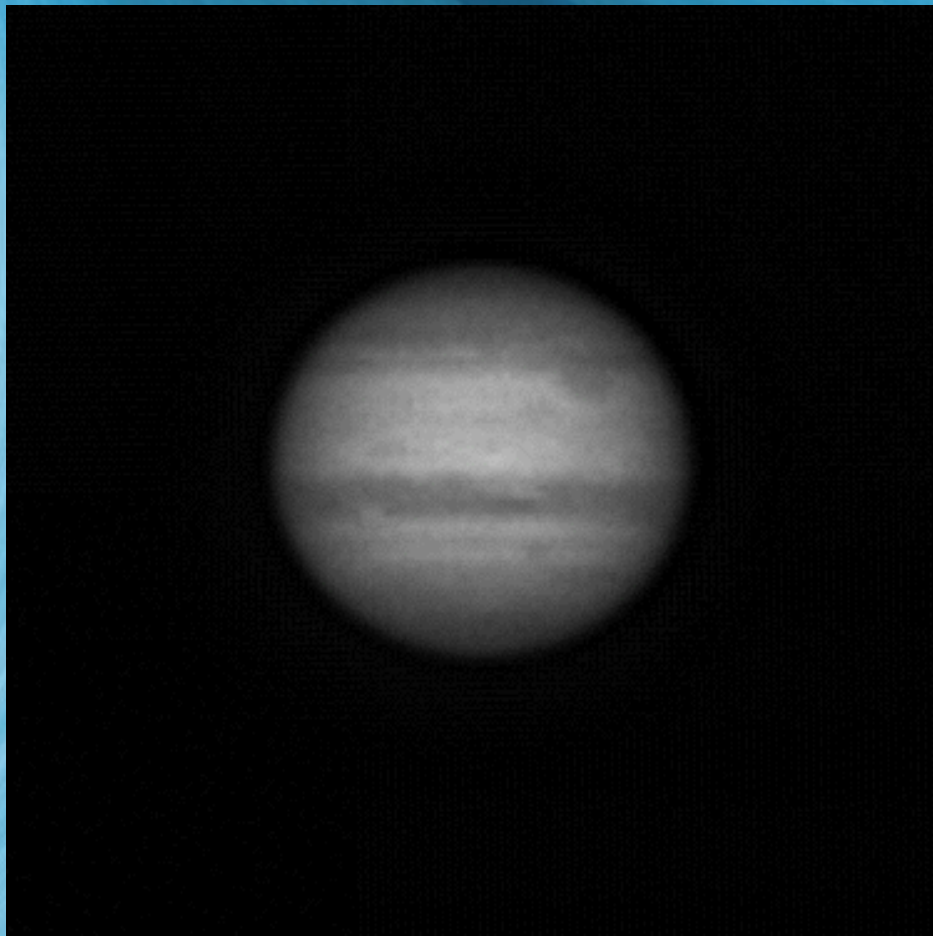


21 Sep 2009, 23:39 JST



22 Sep 2009, 00:41 JST





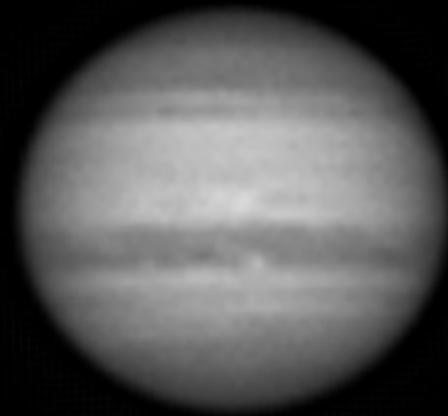


Jupiter's (Large) Moons

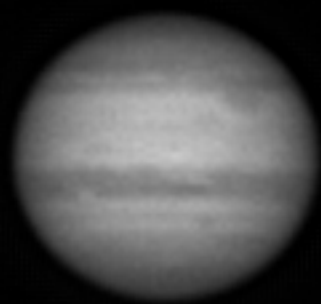
Four large "Galilean" satellites:

Europa, Io, Ganymede, Callisto

21 Sep 2009, 21:41 JST



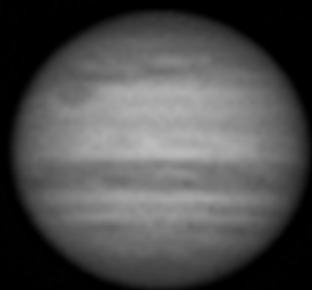
21 Sep 2009, 22:46 JST



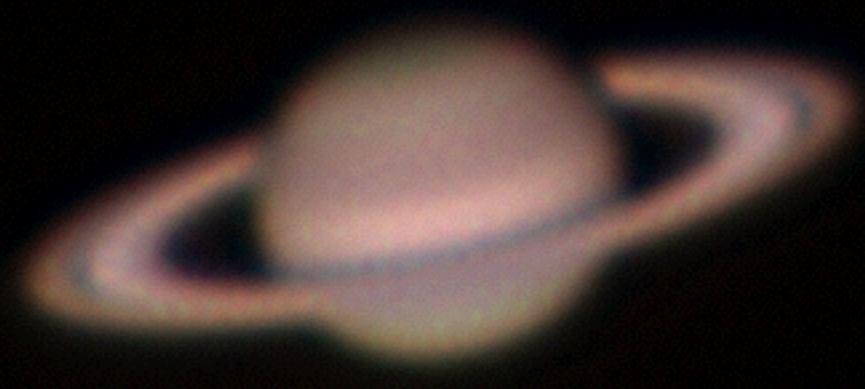
21 Sep 2009, 23:39 JST



22 Sep 2009, 00:41 JST



Saturn





Titan



Dione



Mimas



Enceladus



Tethys

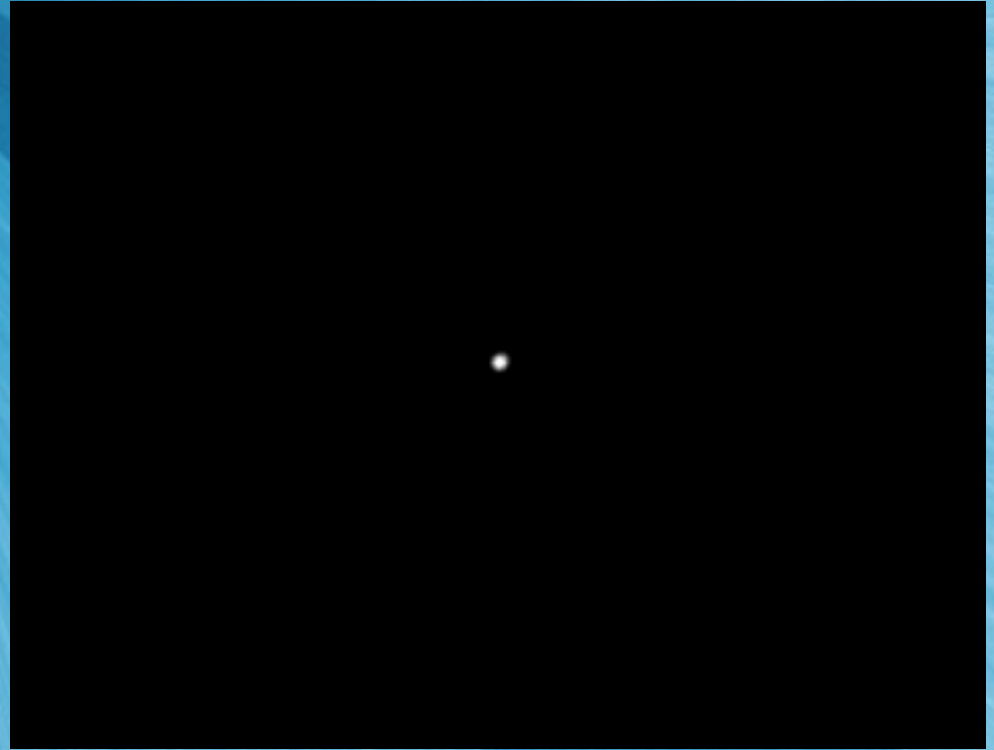
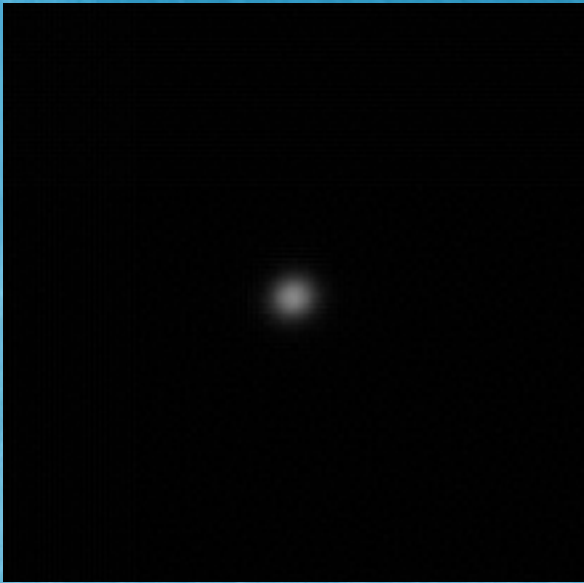


Rhea



2012 Mar 27, 13:47 UT, 1 : X ~500,
moons + one star (10.8 mag); (Sat, same, ~13:22 UT)
Celestron C11, IS DMK21AU04, Sagamihara

Uranus, Neptune



And Beyond...





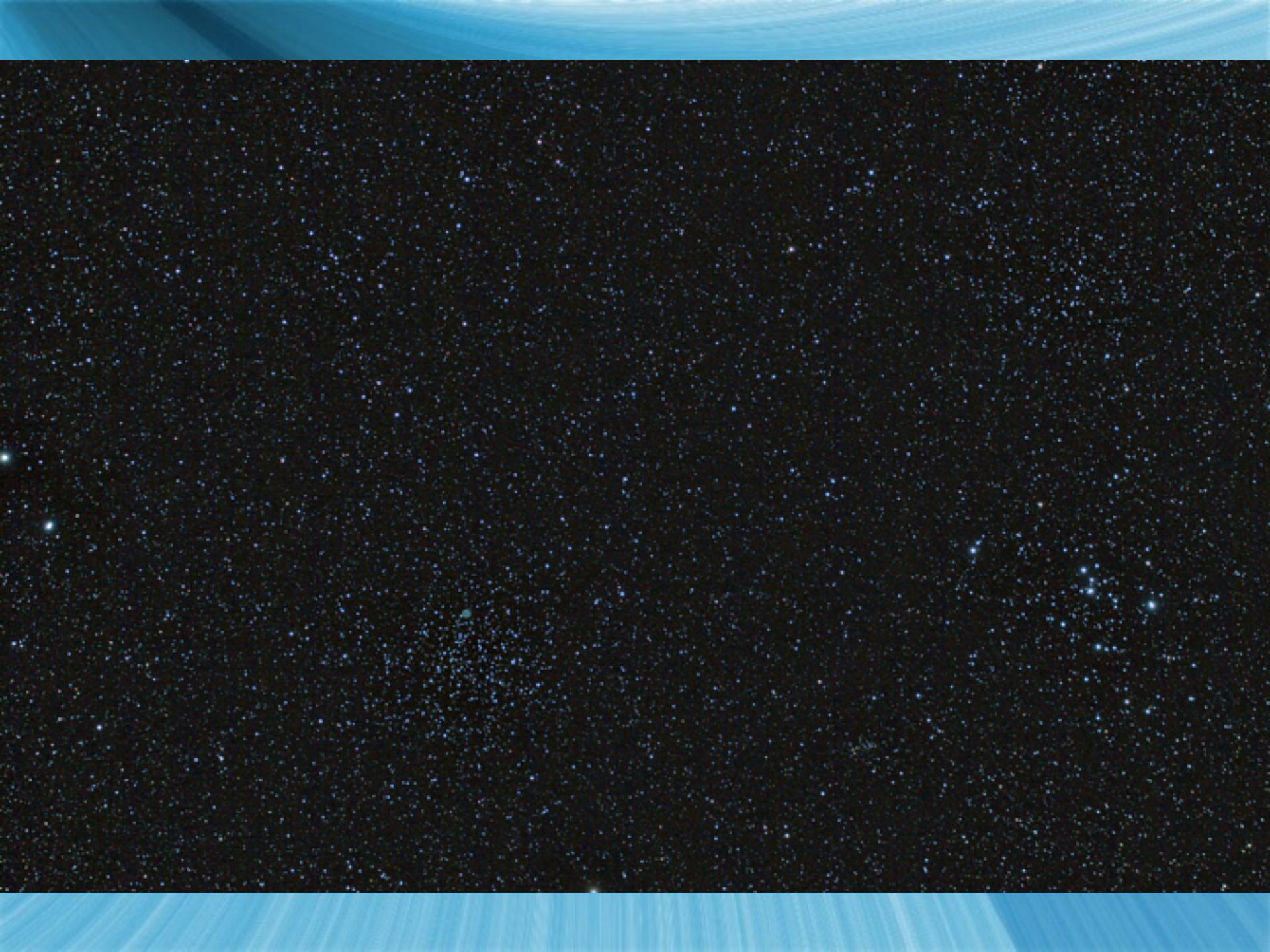
M57, Kumi1
121208, 40x90s



M57, Kumi1
121208, 40x90s

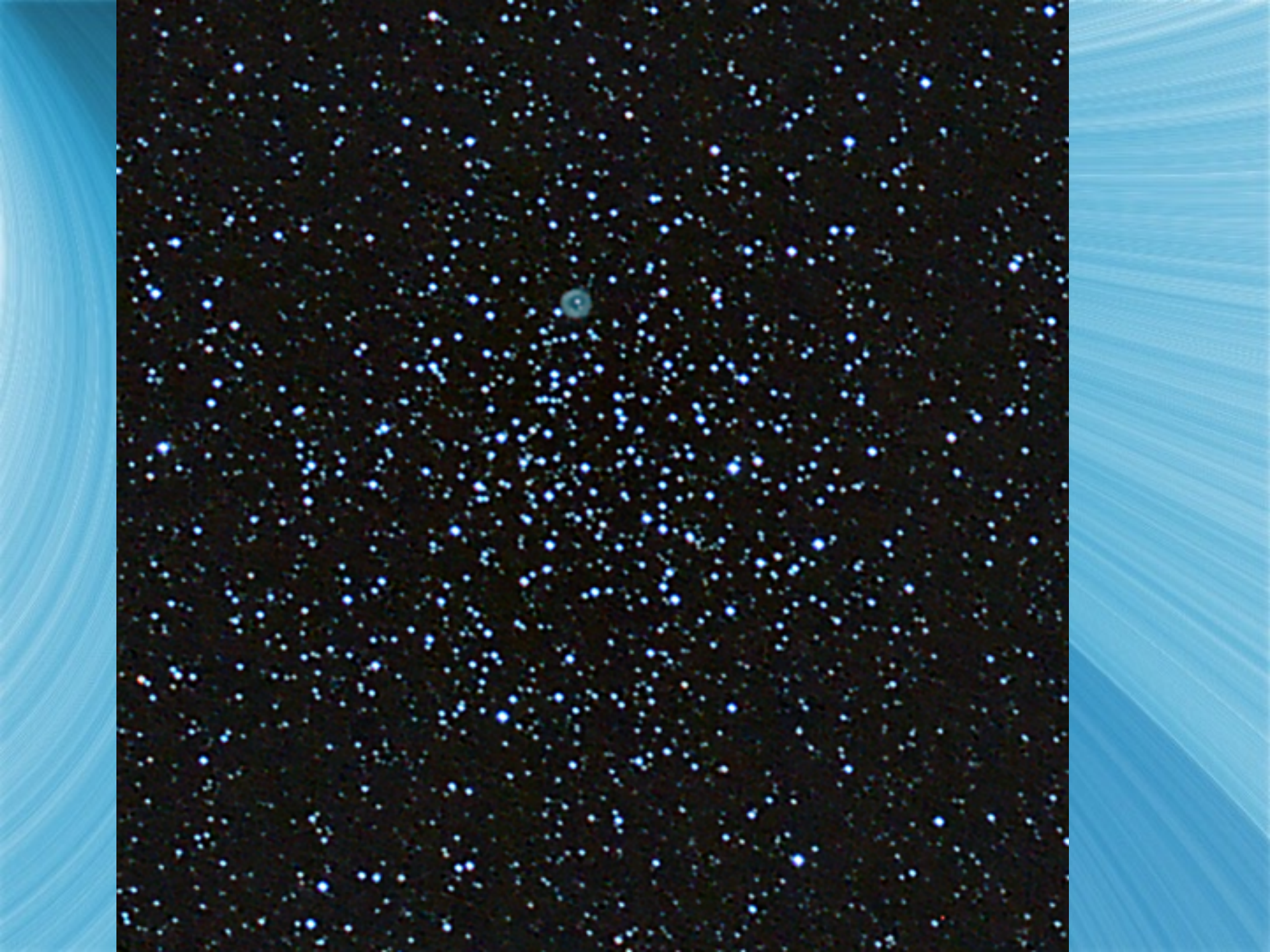




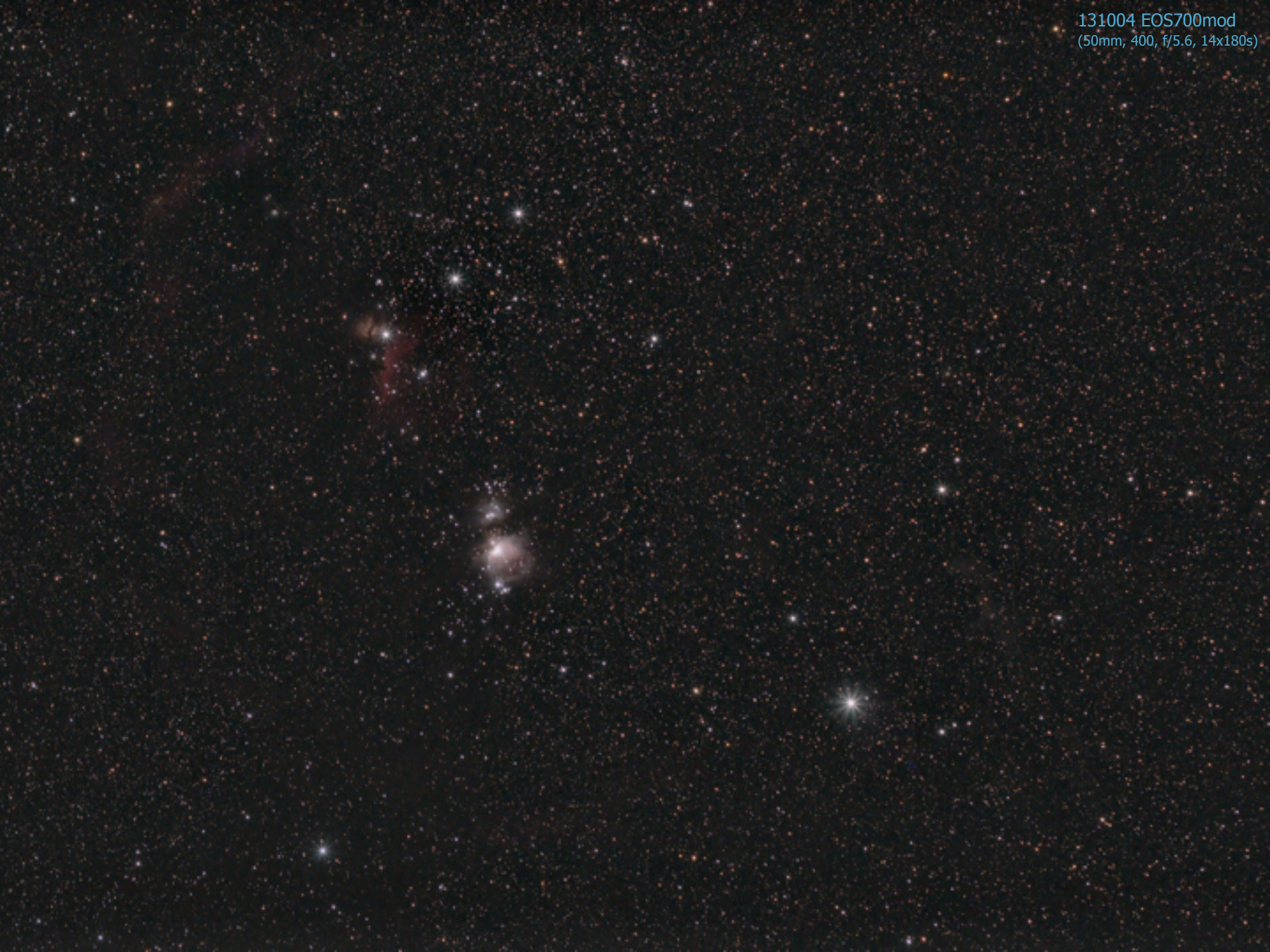


,Kumi1
130216, 28x120s





131004 EOS700mod
(50mm, 400, f/5.6, 14x180s)



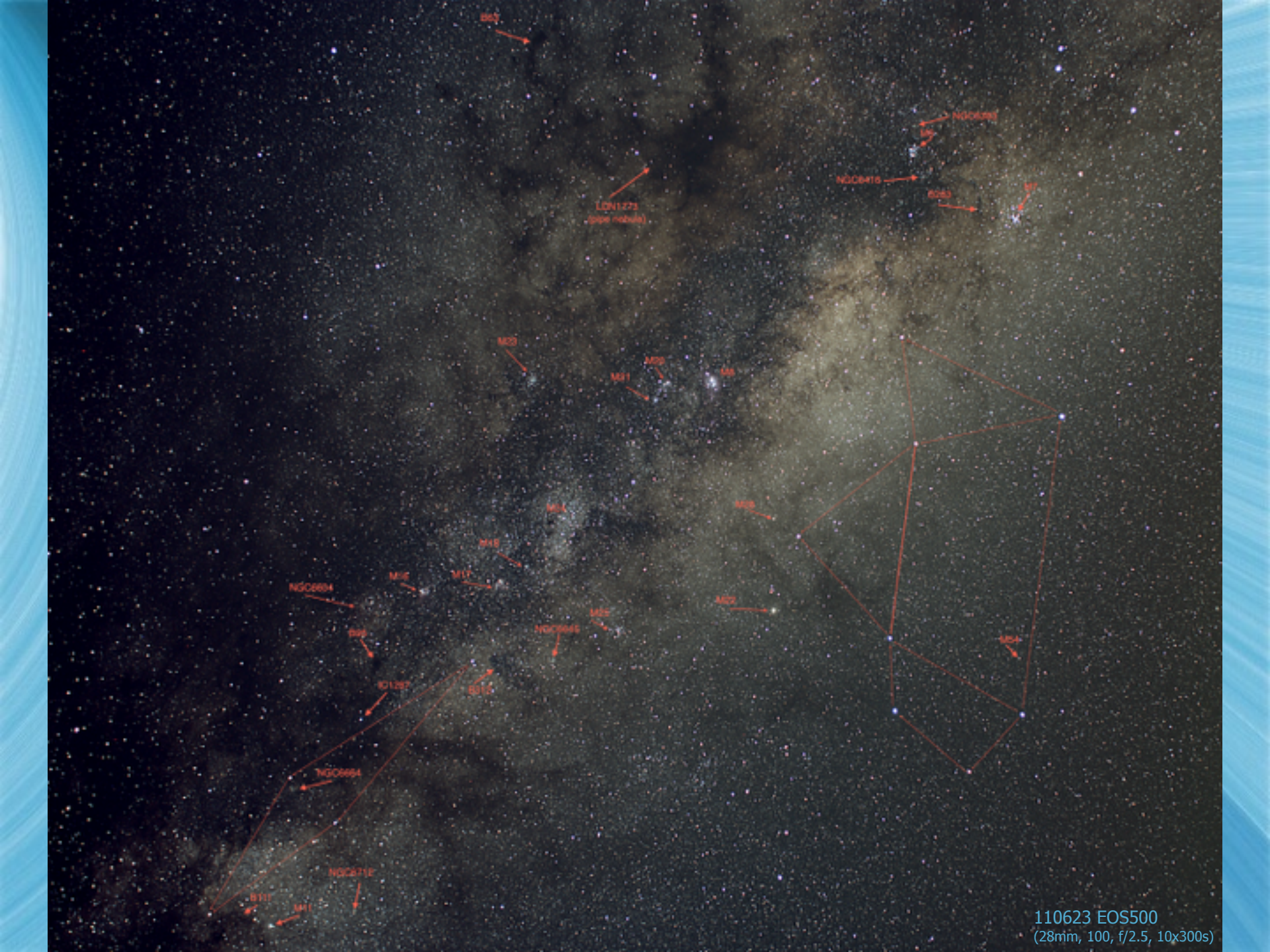


110623 EOS500
(28mm, 100, f/2.5, 10x300s)





110623 EOS500
(28mm, 100, f/2.5, 10x300s)



B65

LCN1273
(open nebula)

NGC6393

NGC6416

RC63

M7

M29

M31

M28

M6

M41

M48

M28

NGC6604

M46

M11

NGC6645

M45

M22

B28

IC1297

B16

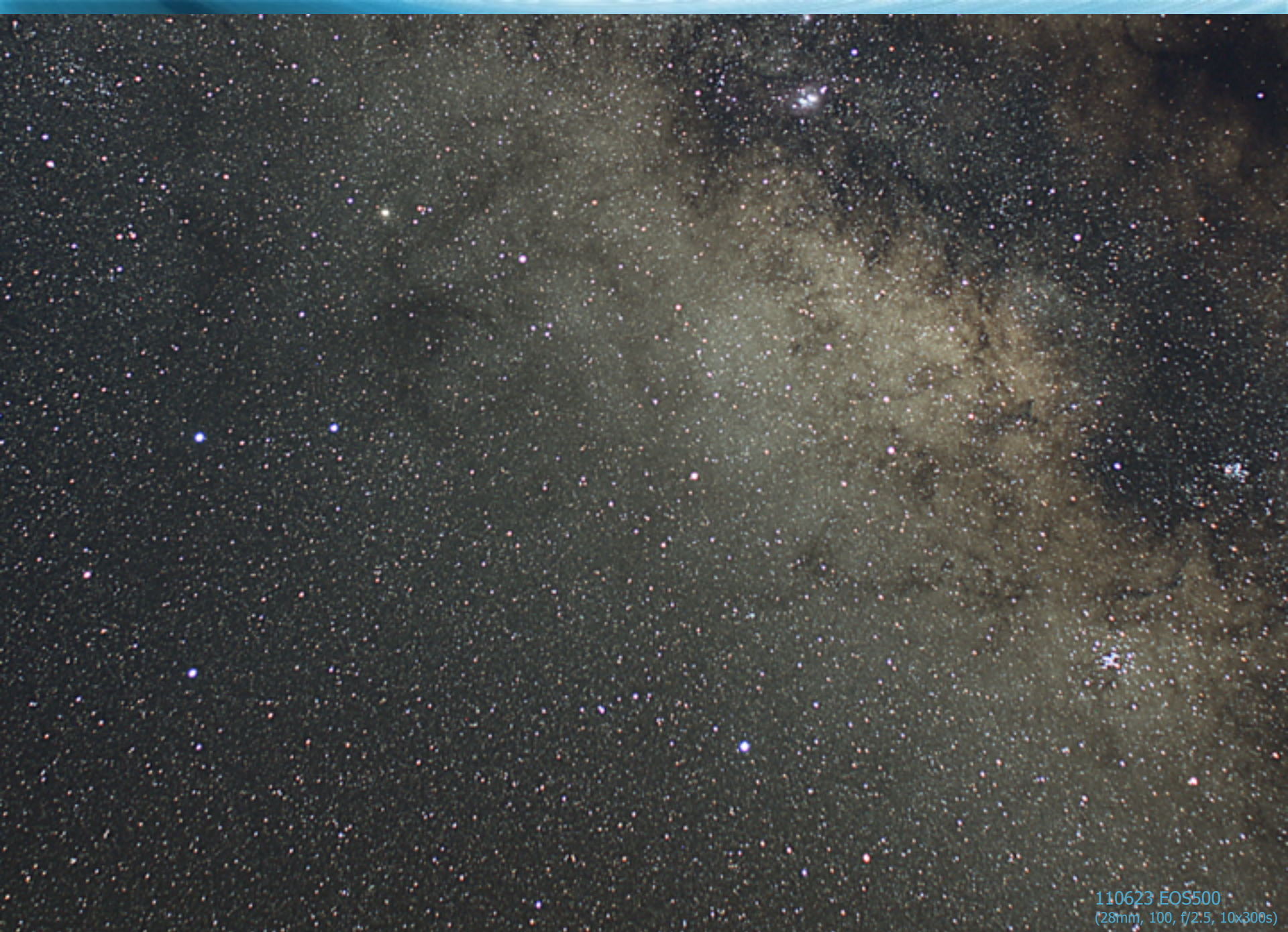
NGC6654

M54

NGC6710

B111

M41



110623 EOS500
(28mm, 100, f/2.5, 10x300s)

M4-NGC6144-Antares-Al-Niyat
Kumii1, 130411, 81x120s



M2 M20 (Trifid), M8 (Lagoon)
Kumii1, 130505, 12x120s



NGC253, WO98(?)
101101, 60x00s





C52-NGC4697+, Kumi1
130403, 51x120s



NGC4718



NGC4705



IC825



PGC170203



NGC4697 (C52)



PGC43178



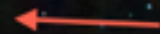
PGC42868



NGC4731



PGC43020



(6.3)

C52-NGC4697+, Kumi1
130403, 51x120s





"Leo Triplet," WO98
110112, 35x90

One "Leo Triplet," WO98

110112, 35x90



One "Leo Triplet," WO98

110112, 35x90





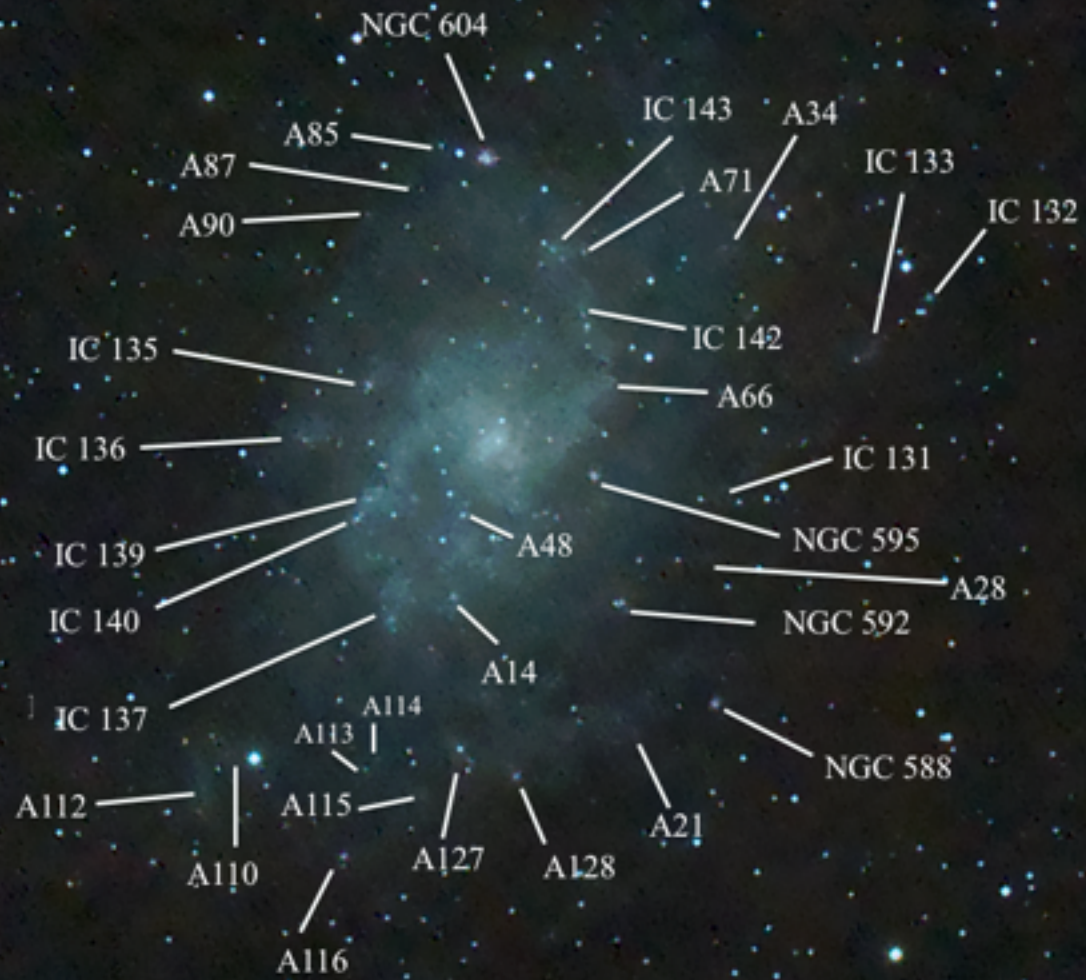
M104 (Sombrero), Kumi1
130210, 44x120



110623 EOS500
(28mm, 100, f/2.5, 10x300s)

M33, Kumi1
130210, 75x120s





2015 April 4 Lunar Eclipse: Earth and Space (Boulder)

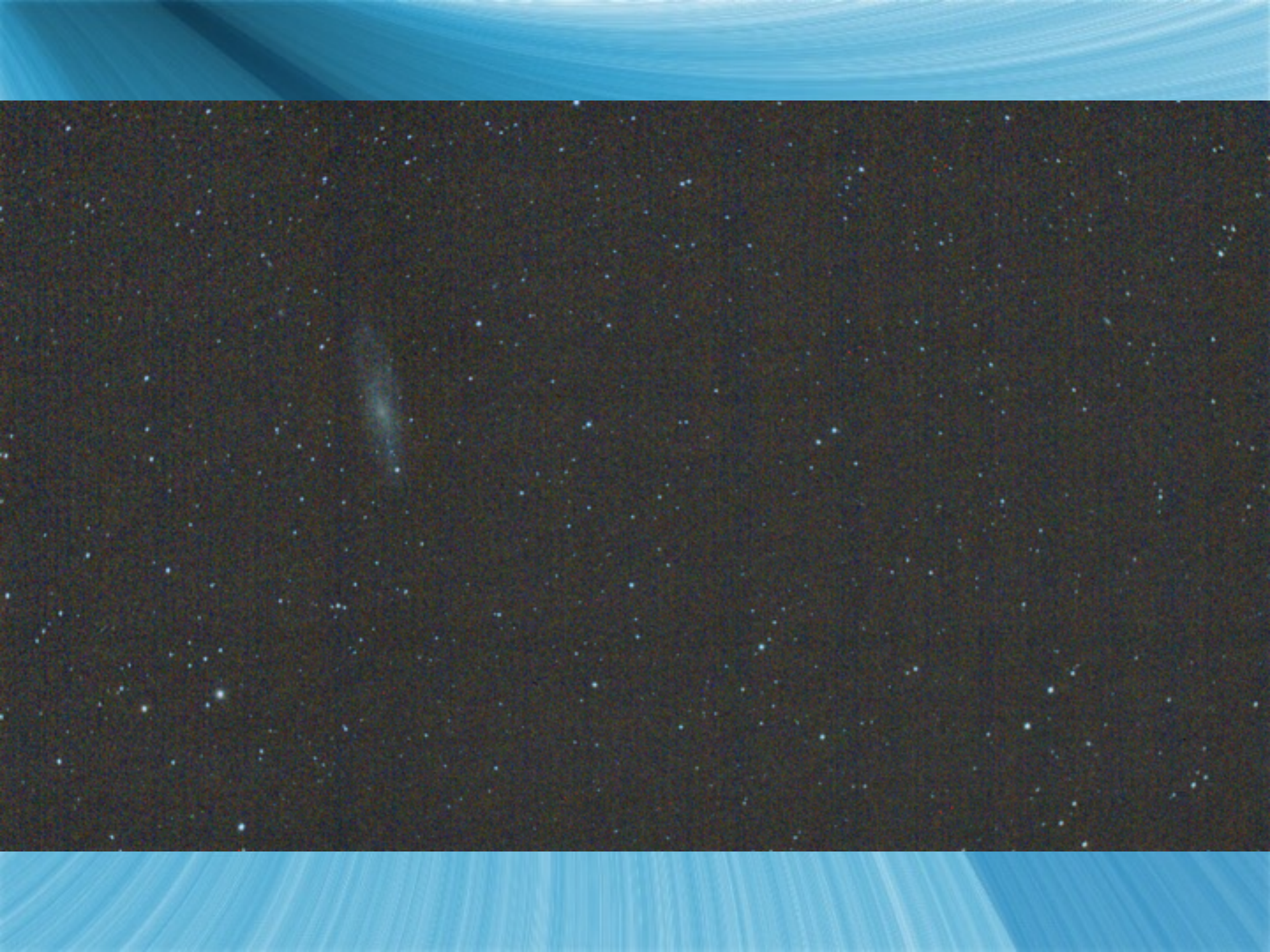


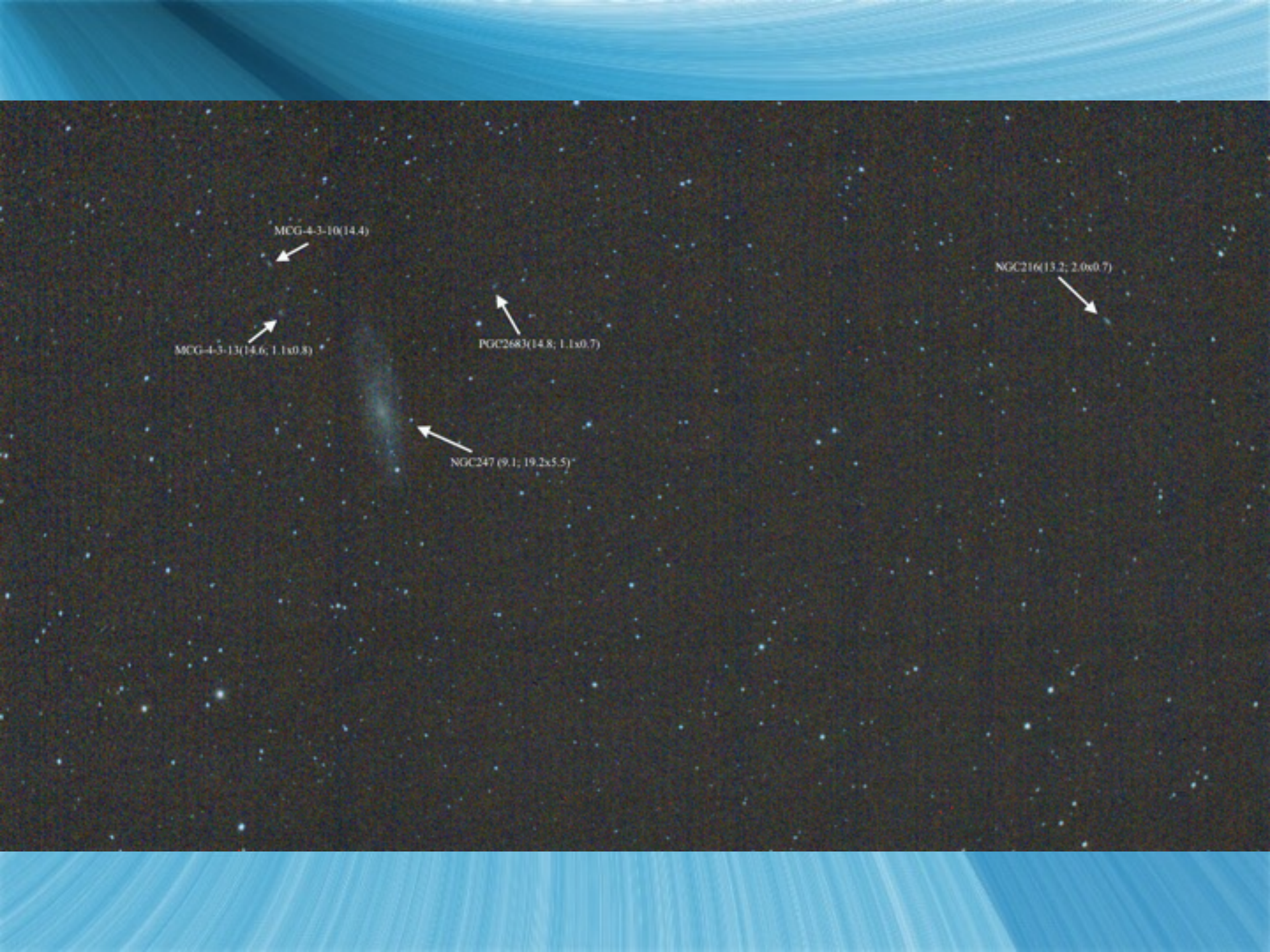












MCG-4-3-10(14.4)

MCG-4-3-13(14.6; 1.1x0.8)

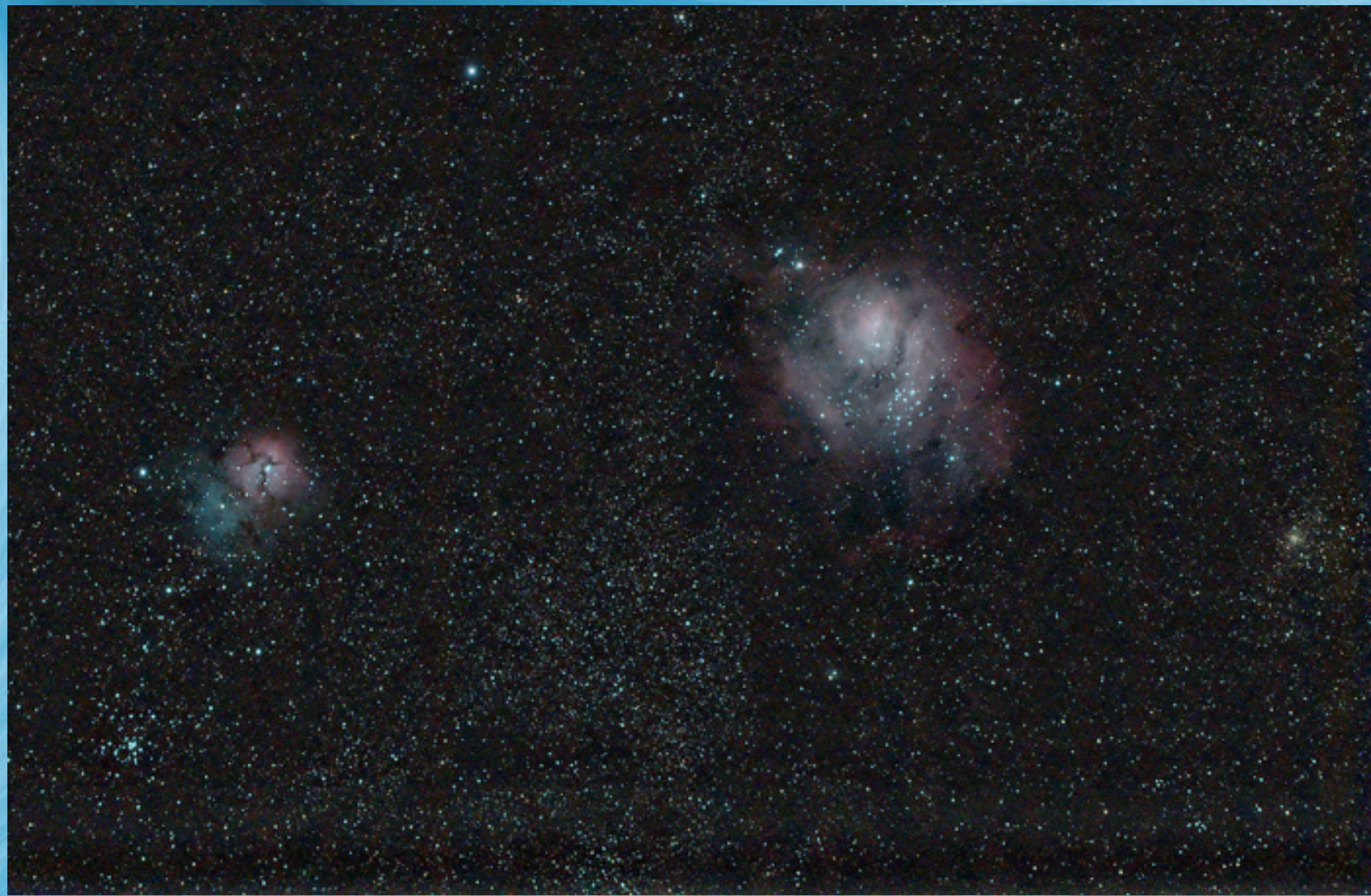
PGC2683(14.8; 1.1x0.7)

NGC247 (9.1; 19.2x5.5)

NGC216(13.2; 2.0x0.7)







NGC 604 in Spiral Galaxy M33



Hubble
Heritage

C59, Kumi1
130408, 35x120s

