

UC

Analyzing NASA Earth Observation Data with ArcGIS Technology

Jennifer Wei, Peisheng Zhao, Wenli Yang, Long Pham, and Dave Meyer

NASA Goddard Earth Science Data and Information Services Center

Outline

- ☐ **Who Are We (GES DISC)**
- ☐ **GES DISC EO Data Characteristics**
- ☐ **Application Examples Through ArcGIS**
- ☐ **Upcoming GES DISC GIS Data Support**

Atmospheric Data

Total Ozone Mapping Spectrometer (TOMS)
 Upper Atmosphere Research Satellite (UARS)
 Solar Radiation and Climate Experiment (SORCE)
 Aura: Ozone Monitoring Instrument (OMI),
 High Resolution Dynamics Infrared Sounder (HIRDLS),
 Microwave Limb Sounder (MLS)
 Historical datasets from Nimbus, Tiros, others
 SNPP Ozone Mapping & Profiler Suite (OMPS)
 Total and Spectral Solar Irradiance Sensor (TSIS)
 Sentinel 5P (TROPOMI)
 Cloud Absorption Radiometer (CAR)

TIROS Operational Vertical Sounder (TOVS)
 Aqua: Atmospheric Infrared Sounder (AIRS)
 SNPP/JPSS : Cross-track Infrared Sounder (CrIS)

Atmospheric CO2 Observations from Space (ACOS)
 Orbiting Carbon Observatory 2 (OCO-2)
 Carbon Monitoring System (CMS)

Modeling

- Modern-Era Retrospective Analysis For Research and Applications (MERRA/2)
- Global Land Data Assimilation System (GLDAS)
- North American Land Data Assimilation System (NLDAS)

Precipitation

- Tropical Rainfall Measuring Mission (TRMM)
- Hydrology Collections
- Global Precipitation Mission (GPM)

MEaSUREs

- MEaSUREs 2006
- MEaSUREs 2012

Outline

- ❑ Who Are We (GES DISC)
- ❑ **GES DISC EO Data Characteristics**
- ❑ Application Examples Through ArcGIS
- ❑ Upcoming GES DISC GIS Data Support

EO Data Characteristics - Multi-spatiotemporal

→ Remote sensing, in-situ, modeling

→ Multiple resolutions:

- ◆ Spatially:

- Global grids (raster) with spatial resolution up to 4-km
- Higher resolution swath (feature points) data (e.g., 2.2-km)

- ◆ Temporally:

- Half-hourly, 3-hourly, daily, monthly satellite measurements
- Hourly, 3-hourly, daily and monthly modeled products
- Monthly ground observation archives
- Composite Climatology (yearly, monthly)
- Near-real-time (NRT) products

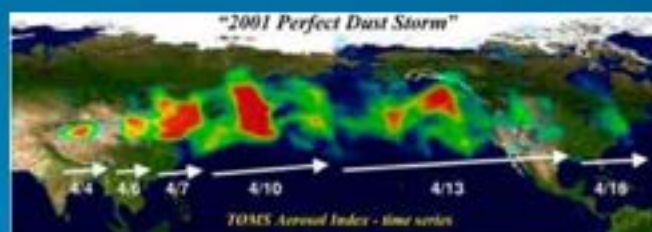
Outline

- ❑ Who Are We (GES DISC)
- ❑ EO Data Characteristics
- ❑ **Application Examples Through ArcGIS**
- ❑ Upcoming GES DISC GIS Data Support

GES DISC EO Data Application via ArcGIS

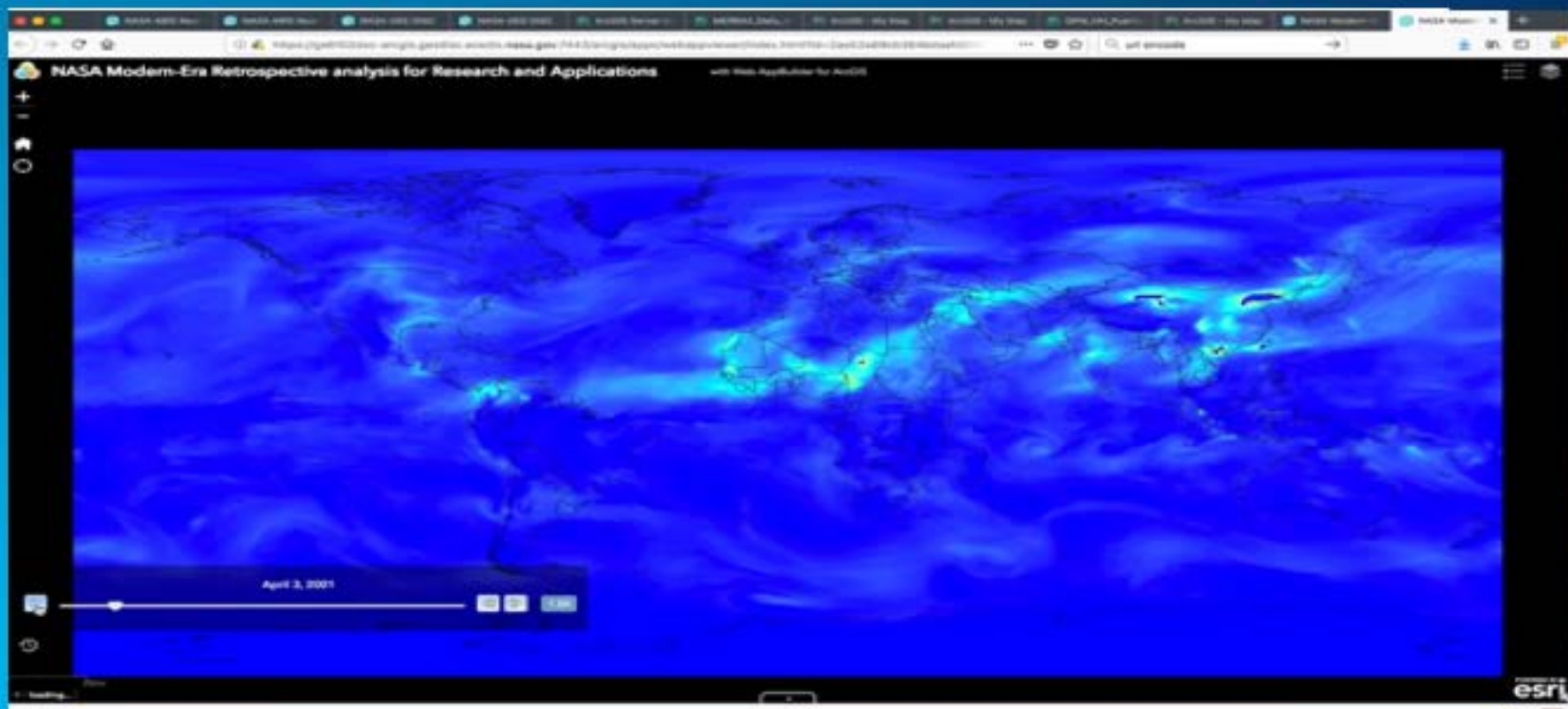
- Data Transformation to be GIS interoperable (WCS/WMS/GeoTIFF)
- Image Service in ArcGIS
- Potential data application in GIS :
 - ◆ Precipitation (TRMM/GPM)
 - ◆ Hydrology (Land Data Assimilation System data (LDAS) with numerous land parameters)
 - ◆ Modern Era Retrospective-Analysis for Research and Applications data assimilation data (MERRA/2), with numerous land, ocean and atmospheric parameters
 - ◆ Atmospheric Compositions
 - Volcano Eruption (SO₂: AIRS/OMI/OMPS/MEaSURES)
 - Dust Storm/Air Quality (AOD/AI/NO₂/PM: TOMS/OMI/OMPS/MERRA-2/TROPOMI...etc)
 - ◆ Extreme Weather Events
 - ◆ Climatic Anomaly

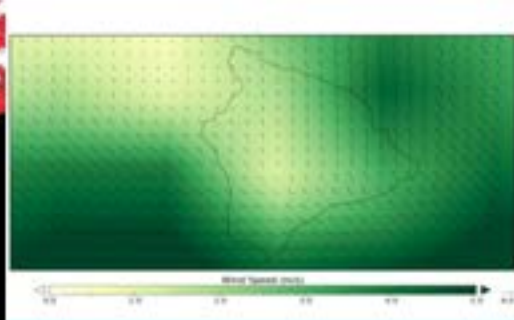
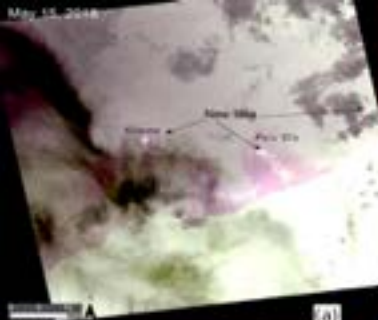
Air Quality Application



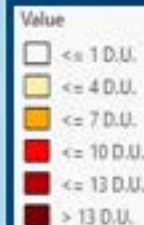
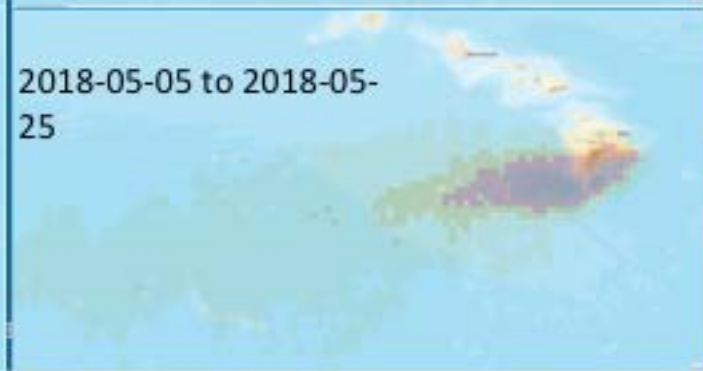
Perfect Dust Storm in 2001 April 3-15

Daily Avg AOD from MERRA-2



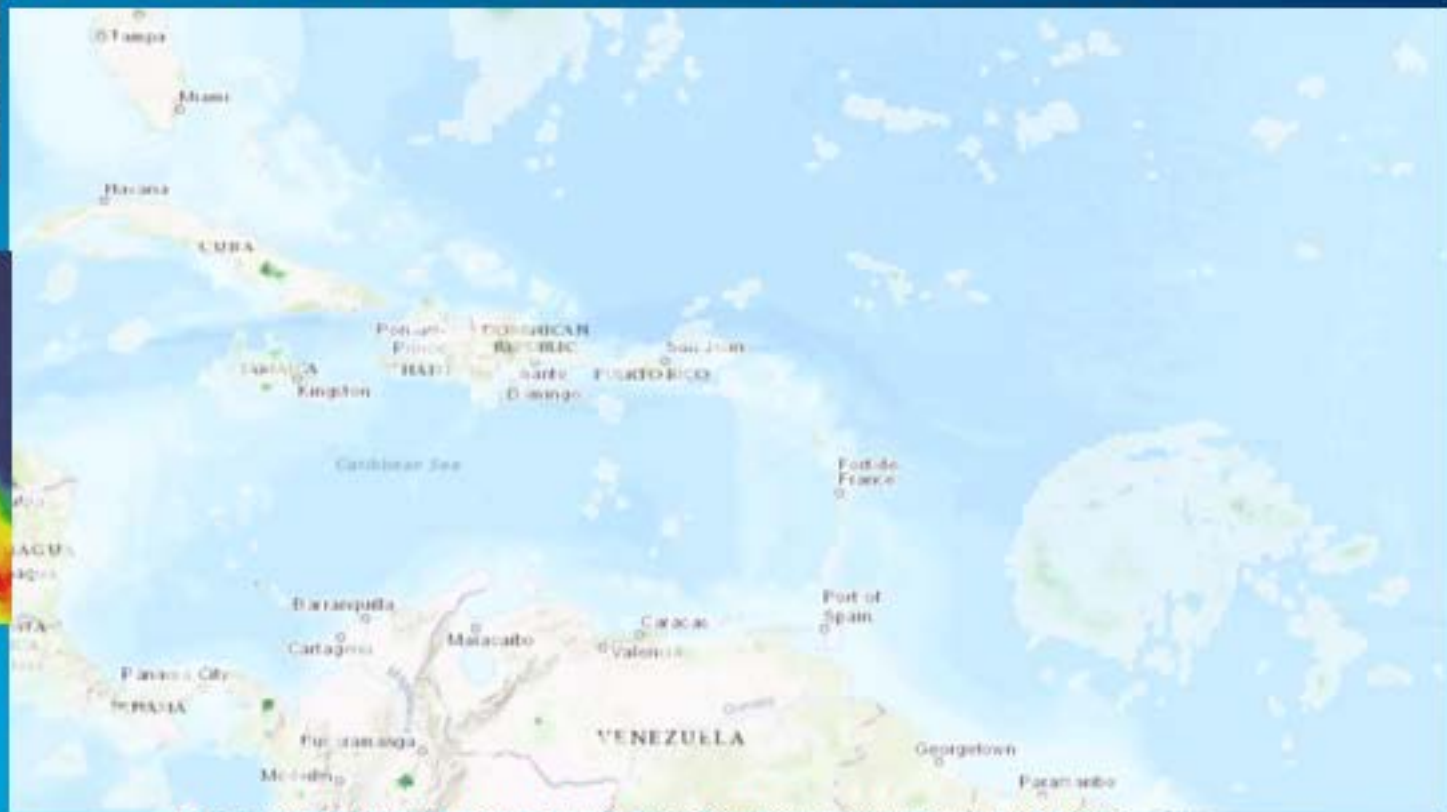


Kilauea Volcanic Eruptions in May 2018



Extreme Weather Events: Hurricane Maria Hurricane Harvey

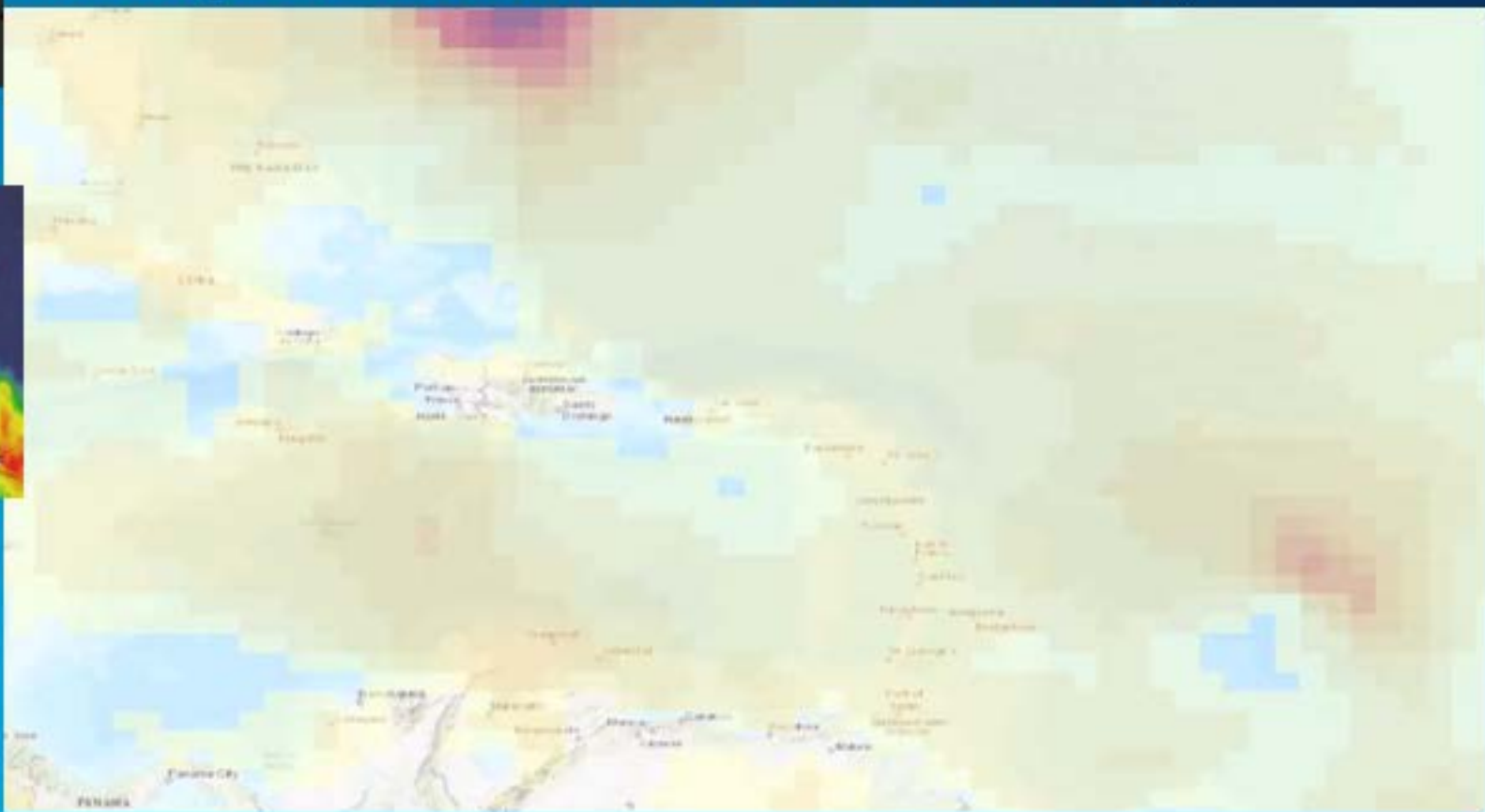
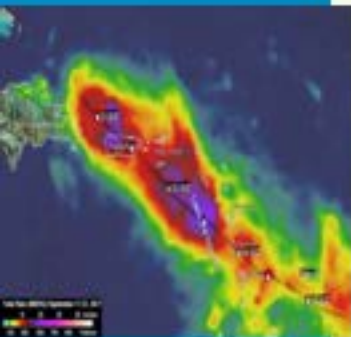
Movie of GPM Precipitation for Hurricane Maria (2017-09-17 00Z to 2017-09-22 2330 Z)



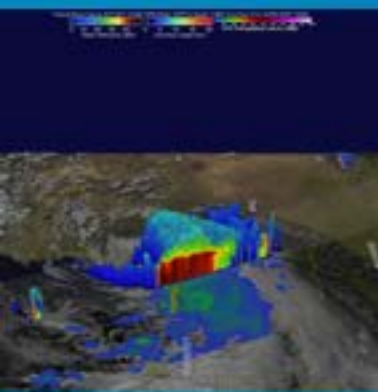
GES DISC Goddard Earth Science Data and Information Services Center

<https://disc.gsfc.nasa.gov>

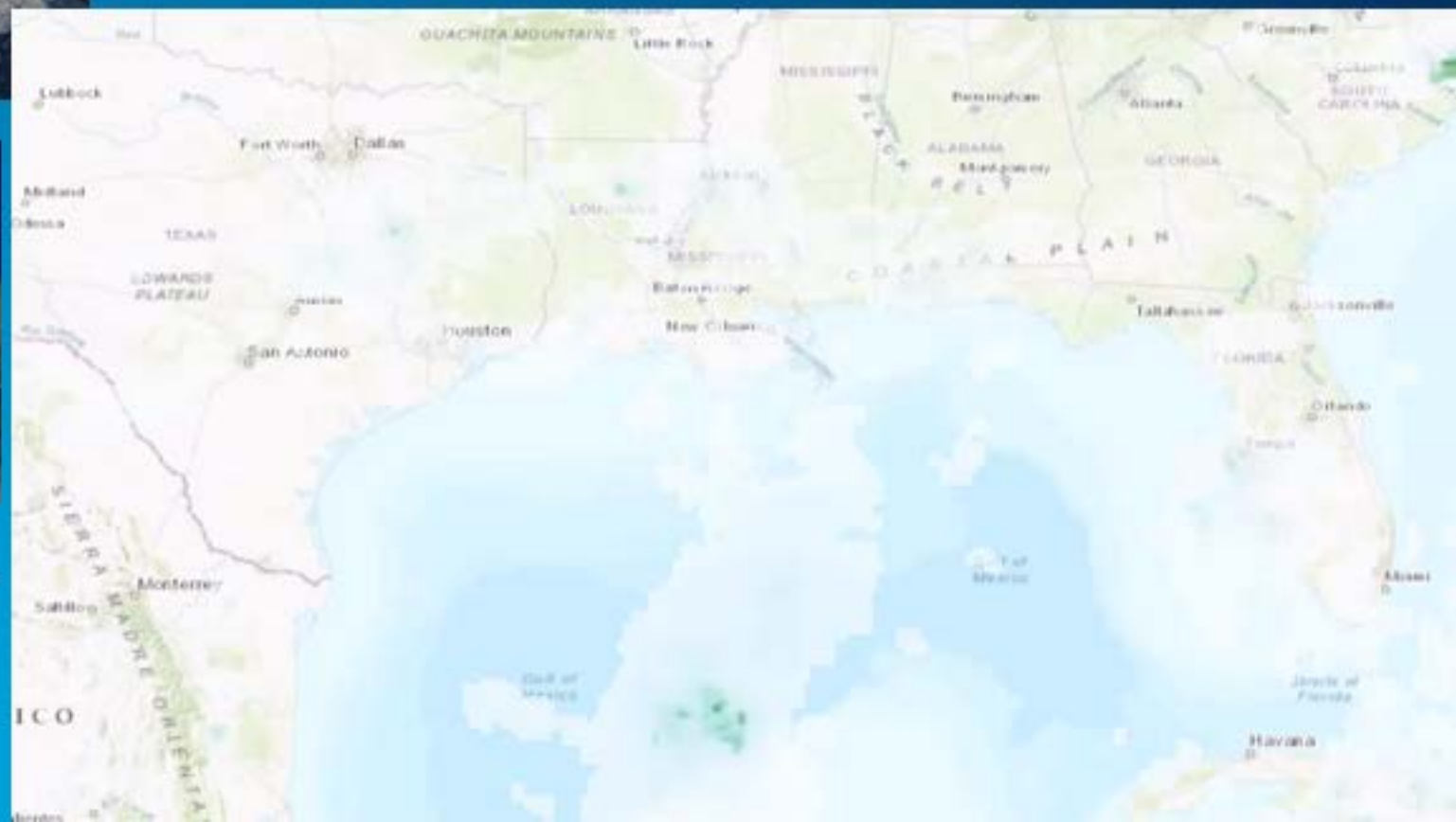
Movie of MERRA-2 Surface Wind During Hurricane Maria (2017-09-17 00Z to 2017-09-22 23Z)



Movie of GPM Precipitation for Hurricane Harvey (2017-08-24 00Z to 2017-08-30 23:30 Z)



Historical Flood in Texas



Other Application: Wind/Energy

Drought/Flash Flood

North American Soil Moisture Monitoring from NLDAS for 65 years data record



Upcoming GES DISC GIS Data Support

- Implement ArcGIS Image Service
- Implement ArcGIS Portal
- Publish GES DISC's Image/WCS/WMS services
- Experiment ArcGIS Feature Service
- Experiment ArcGIS Geoprocessing

Are there any questions?

gsfc-help-disc@lists.nasa.gov

Jennifer Wei (jennifer.c.wei@nasa.gov)