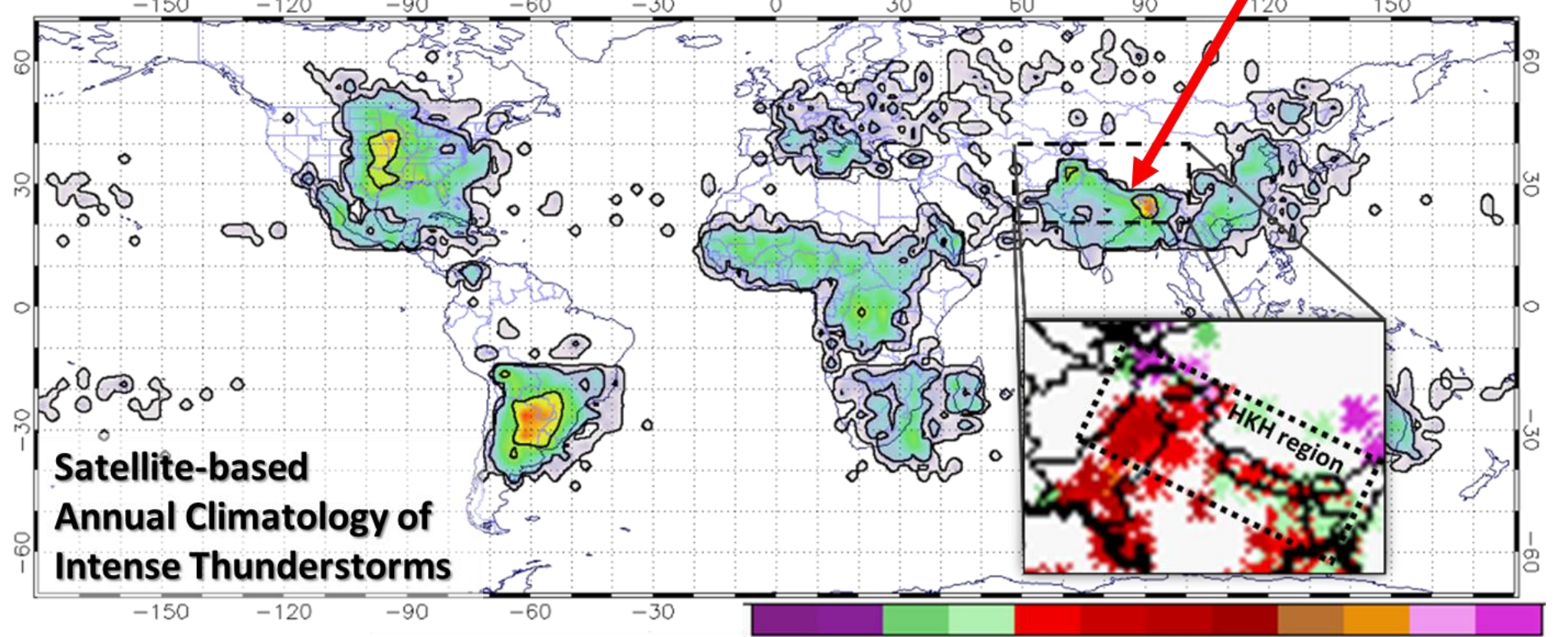


Introduction

- Some of the most intense thunderstorms on Earth plague the Hindu-Kush Himalayan (HKH) region of south-central Asia, esp. during the pre-monsoon months of March through May (see Figure below).
- All thunderstorm hazards are common, including large hail, tornadoes, damaging straight-line winds, deadly lightning, dust storms, and flash flooding.
- This NASA/SERVIR Applied Sciences Team project seeks to use modeling and remote-sensing assets to build early warning capabilities and facilitate timely disaster response for high-impact weather events in the HKH region.

Some of the most intense thunderstorms on Earth plague the HKH region:



From: Cecil and Blankenship (2012) Premonsoon (April-May): Bangladesh to eastern Nepal Monsoon (June-August): Nepal to northern Pakistan

Preliminary Storm Reports and Casualties

- Sourced from regional news/media outlets; Mar-May 2018
- Not necessarily an exhaustive list
 - 17 lightning events with fatalities
 - 16 damaging wind events and 7 damaging hail events
 - Over 200 fatalities estimated

Event	Location	Lightning	Wind	Hail
29-Mar-18	Bhutan NE India	X	X	X
30-Mar-18	Bangladesh Nepal N India NE India	X	X	X
11-Apr-18	NW India	X	X	
17-Apr-18	N. India	X	X	
21-Apr-18	NE India	X	X	
22-Apr-18	Bangladesh	X	X	
29-Apr-18	Bangladesh N. India	X	X	
30-Apr-18	Bangladesh	X	X	
2-May-18	N. India	X	X	
6-May-18	Bangladesh	X	X	
7-May-18	NE India	X	X	
9-May-18	Bangladesh NE India	X	X	
10-May-18	Bangladesh NE India	X	X	X
11-May-18	Bangladesh NE India	X	X	X
13-May-18	N. India	X	X	
15-May-18	Bangladesh	X	X	

Preliminary Impact Assessment with Satellite Imagery

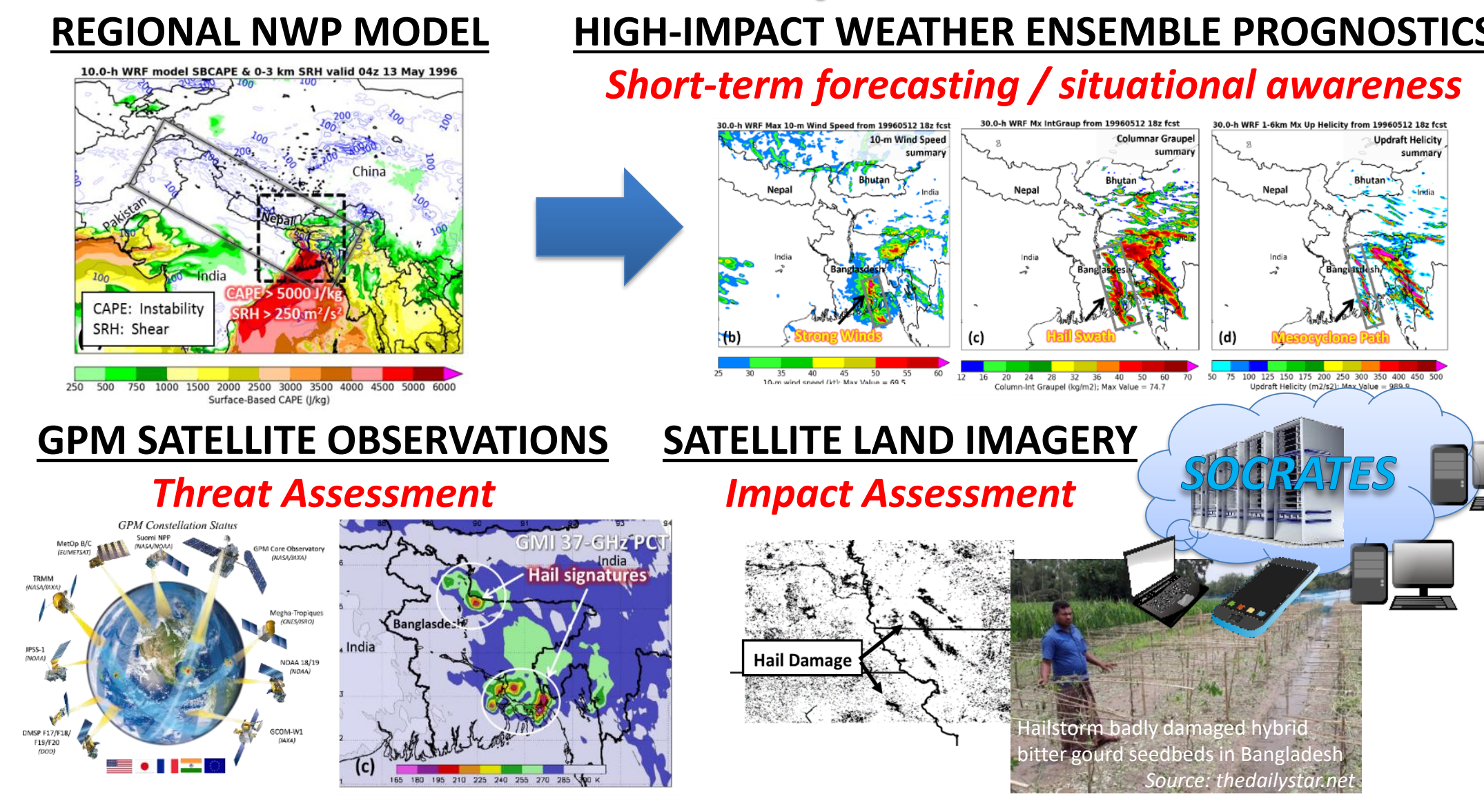
- Passive and active remote sensing was preliminarily evaluated to detect [hail] damage from intense thunderstorms in the HKH region.
- Due to small heterogeneous agricultural areas in the HKH region, it was difficult to identify damaged areas using analysis techniques that are successful in the U.S.
- We will thus re-direct focus to remote-sensing methods and identification techniques to map flooding and inundation areas from intense thunderstorms and annual monsoon rains.
- These techniques and methods will be transferred to end-users and stakeholders during the final year of the project.

(above) 8 June 2018 Sentinel-1 False color SAR RGB image denotes areas of water [blue] in central Bangladesh.

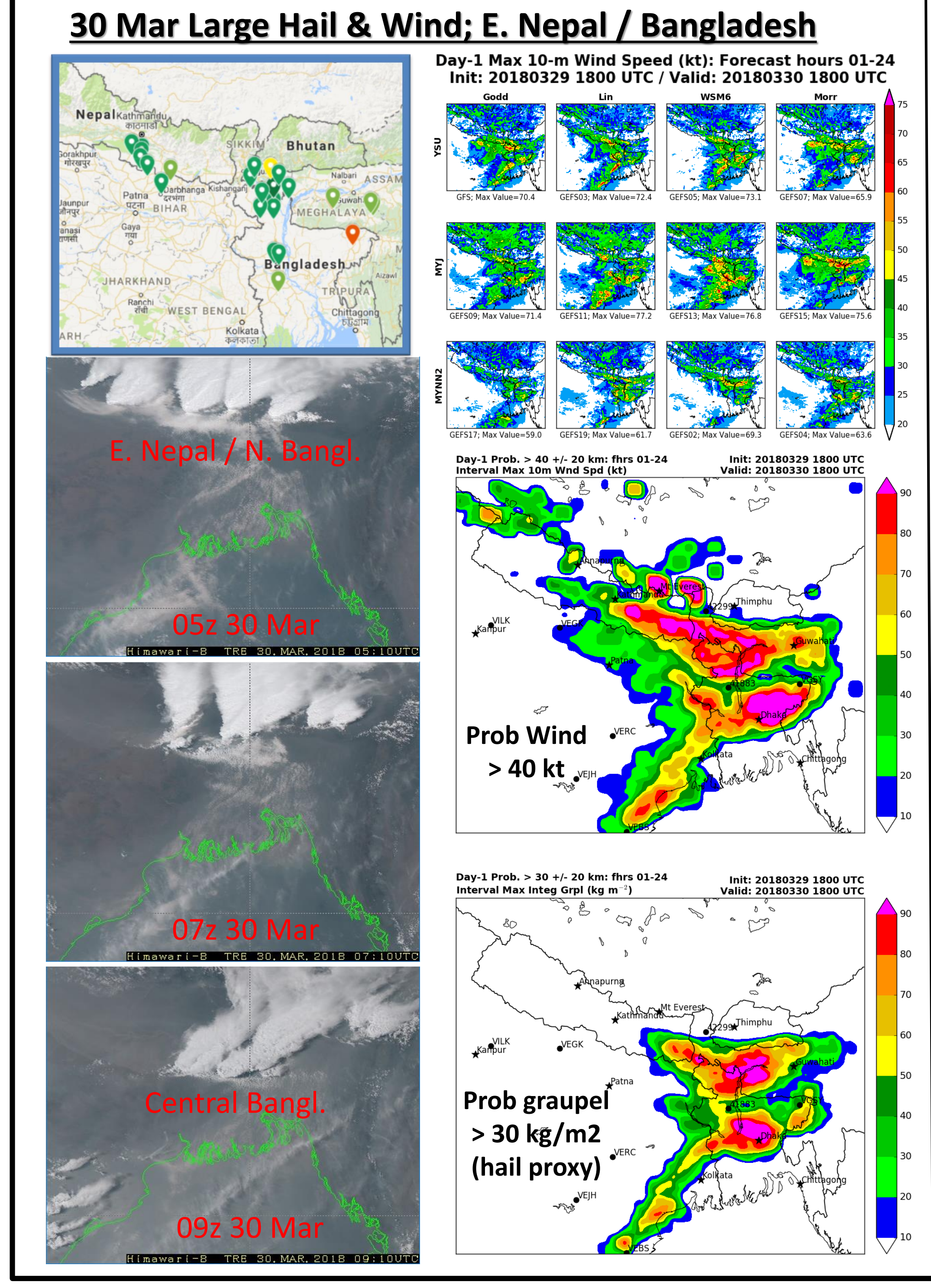
Overarching Project Objectives

- Develop **High-Impact Weather Assessment Toolkit (HIWAT)** for the HKH region.
- Jointly develop HIWAT capabilities and training with the International Centre for Integrated Mountain Development (ICIMOD), the NASA/SERVIR hub based out of Kathmandu, Nepal.
- Demonstrate capability in end-user environment (i.e., "Tethys" web mapping interactive service).
- Transition HIWAT to ICIMOD for future execution and maintenance.

HIWAT Components

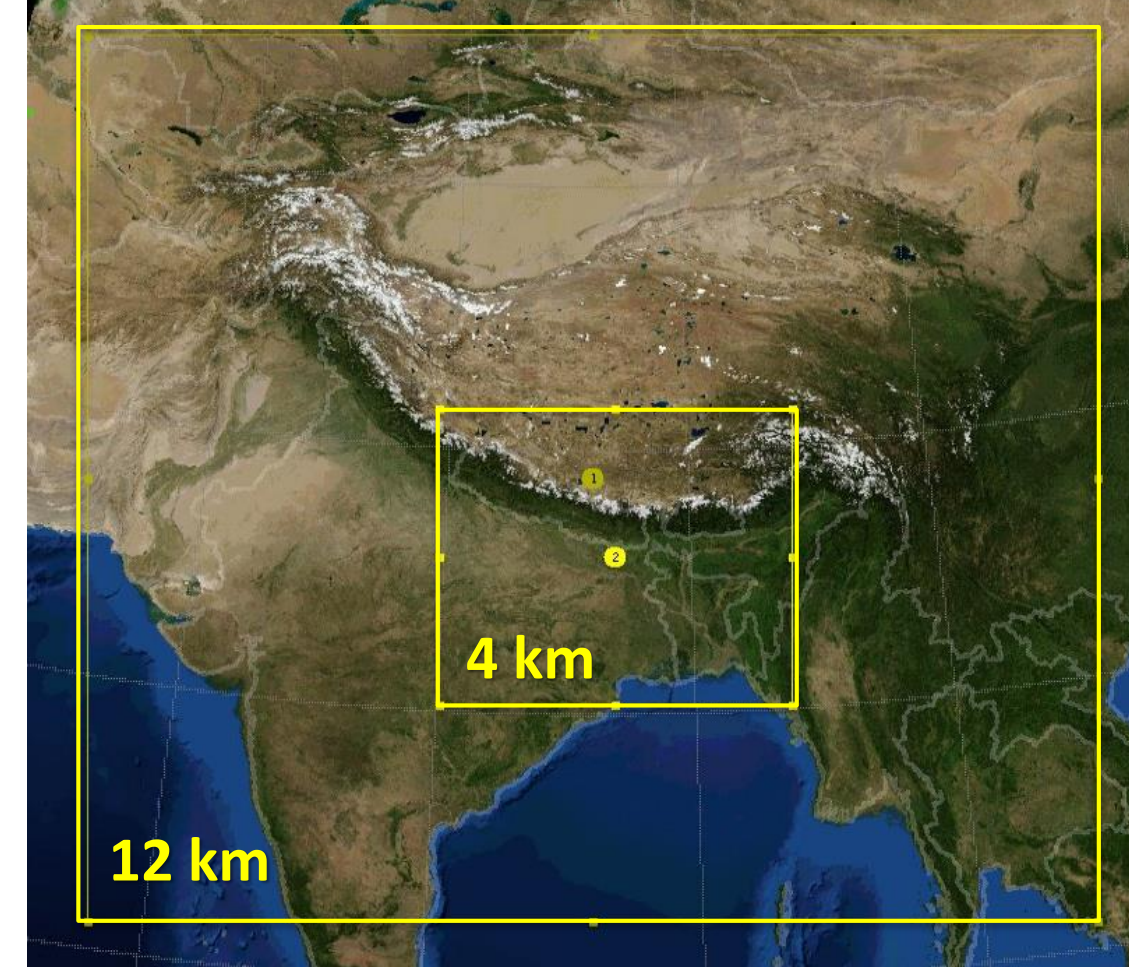


Sample Ensemble Forecast Plots for Select Events



Methodology and Datasets

- Daily, real-time 12-member NWP ensemble; pre-monsoon months of March-May 2018
 - Convection-allowing ensemble system with sufficient spread in solution; 18z daily initializations
 - Weather Research and Forecasting (WRF) model within Unified Environmental Modeling System (UEMS)
 - 12-km outer grid/4-km nested grid; all analysis done on 4-km nest (see domain figure below)
 - 12 different initial/boundary conditions from NCEP/EMC's GFS and GEFS operational models
 - Physics variability using 3 planetary boundary layer and 4 microphysics schemes (see table below)
 - 48-hour forecasts with hourly output, displayed on internal project web page for real-time and archive
 - Cluster: SERVIR Operational Cluster Resource for Applications - Terabytes for Earth Science [SOCRATES]
 - Using "head" node and 12 virtual Linux nodes, each with 32 processors and 128 GB RAM
 - Each node runs a single ensemble member; post-processing / product generation on head node
- Proxy model fields to represent convective hazards (Kain et al. 2008, 2010)
 - Convective Intensity: Composite reflectivity
 - Lightning: Lightning Forecast Algorithm (LFA; McCaul et al. 2009)
 - Straight-Line Winds: Maximum output interval 10-m wind speed
 - Hail Threat: Maximum output interval total column graupel
 - Mesocyclone/tornado: Maximum output interval updraft helicity
 - Flooding rainfall: Accumulated precipitation thresholds (esp. 3-hourly)



12-km/4-km nested domain for convection-permitting ensemble.

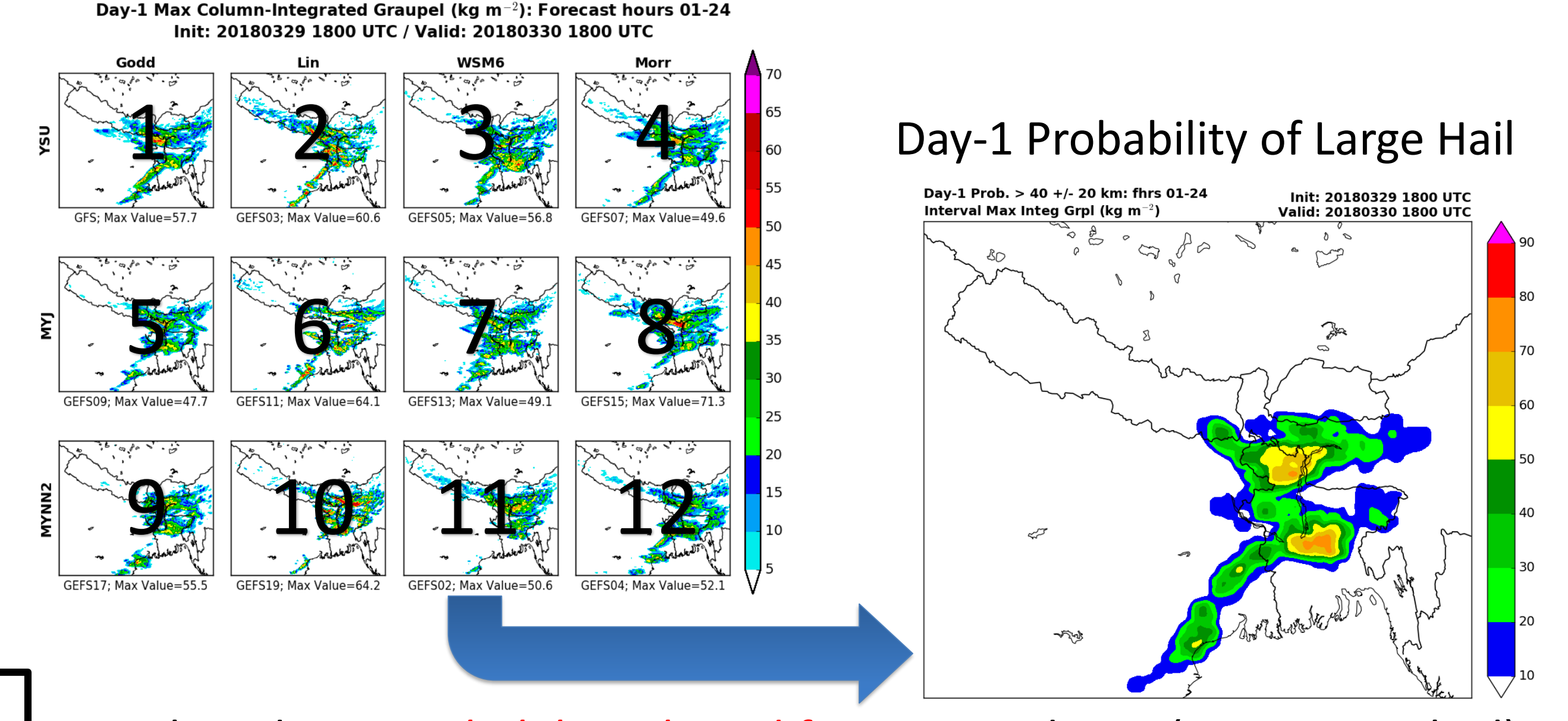
PBL ↓	MP →	Goddard 3-ice with graupel	Lin 6-class	WSM6 6-class	Morrison double moment
Yonsei State University (YSU)	HKH1: GFS	HKH2: GEFS 03	HKH3: GEFS 05	HKH4: GEFS 07	
Mellor-Yamada Janjic (MYJ)	HKH5: GEFS 09	HKH6: GEFS 11	HKH7: GEFS 13	HKH8: GEFS 15	
Mellor-Yamada Nakanishi and Niino (MYNN2)	HKH9: GEFS 17	HKH10: GEFS 19	HKH11: GEFS 02	HKH12: GEFS 04	

12-member ensemble system with variations of initial/boundary conditions and WRF PBL (rows) and microphysics (columns) schemes.

Output NWP Ensemble Products

- Summarize 12-member ensemble system into meaningful fields for intense thunderstorm forecast guidance (largely following Schwartz et al. 2015)
 - Postage stamp plots: Thumbnail view of all ensemble members each hour
 - Ensemble statistics: Mean, Minimum, Maximum, Spread/standard dev.
 - Paintball plots: Threshold applied to various fields and then color-coded by ensemble member with varying transparency
 - Probability products: Probability of exceeding thresholds (as in paintball plots)
 - Daily summaries: Summarizes first and second 24-h forecast periods for a quick look into Day-1 and Day-2 thunderstorm hazards and overall spatial coverage
- Probability products
 - Grid point probability: $Prob_{ij} (\%) = 100 \times \left(\frac{Hits}{n} \right)$; where n = # of ens. members
 - Neighborhood probability: Search for "hits" within neighborhood window, then compute probability using formulation above; apply Gaussian smoother
 - Probability Matched Mean (PMM): Replace ensemble mean values with those sampled from distribution of all ensemble members (Ebert 2001; Clark 2017)

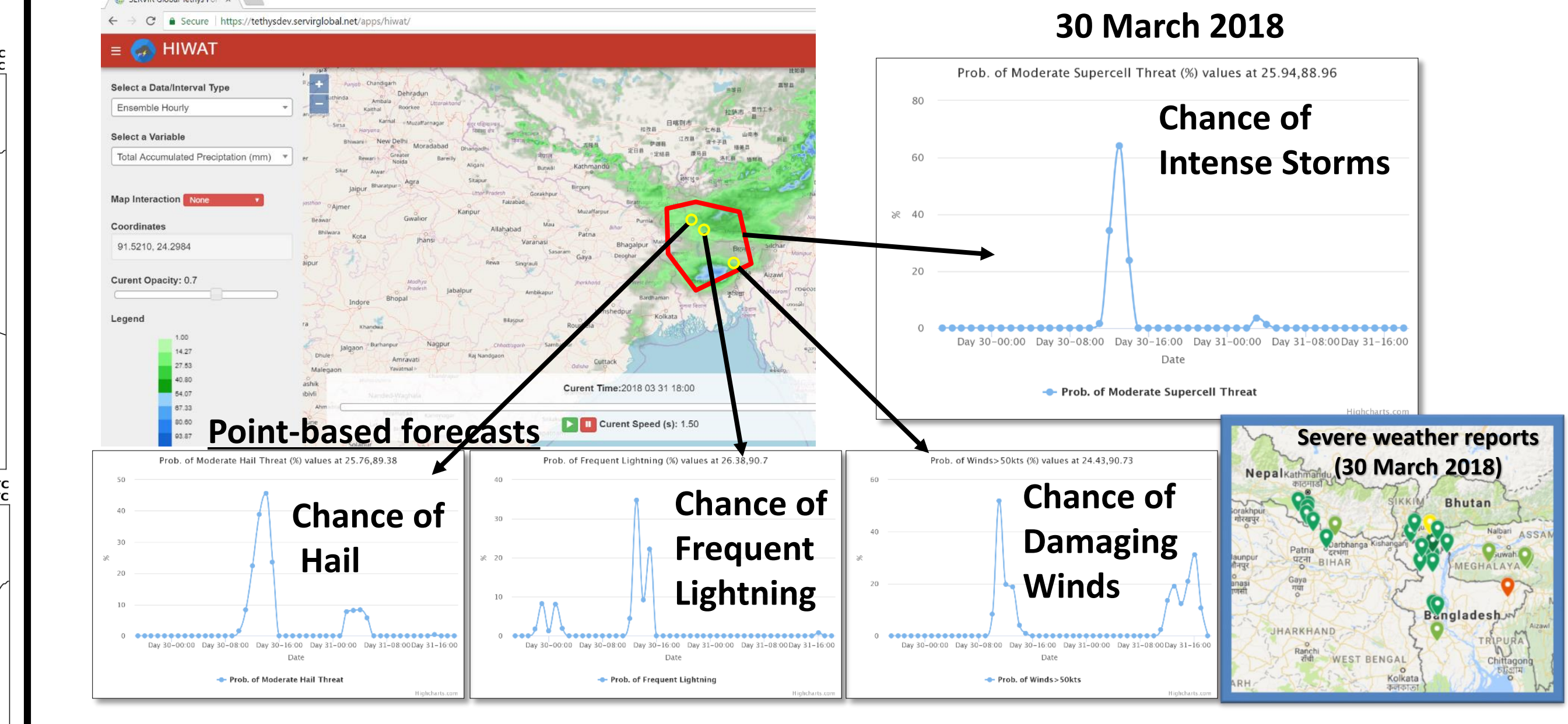
Ensemble Forecast Concept Design



Combined into probabilistic-based forecast guidance (e.g., severe hail)

Ongoing and Future Efforts

- Continuing HIWAT ensemble simulations through 2018 wet monsoon
- Transitioning products into NASA/SERVIR Tethys Application
 - Interactive web mapping service capable of layering HIWAT probability maps over other geo-navigated datasets.
 - Data sampling and interactive time series plots generated on the fly for select points and/or user-outlined polygons (see sample images below).
- Conduct verification of individual ensemble member precipitation and PMM, against GPM/IMERG-Final precipitation rates
- Verification of LFA total lightning flash rates using Earth Networks Total Lightning Network as ground truth.



Acknowledgements: This research is funded by NASA's Applied Sciences Capacity Building Program Manager, Dr. Nancy Searby. We would like to thank Dr. Bhupesh Adhikary and the International Centre for Integrated Mountain Development (in Kathmandu, Nepal) for their assistance and involvement with this project.