

ARTICLE

DOI: 10.1038/s41467-018-06525-2

OPEN

Diverging importance of drought stress for maize and winter wheat in Europe

Heidi Webber^{1,2}, Frank Ewert^{1,2}, Jørgen E. Olesen³, Christoph Müller⁴, Stefan Fronzek⁵, Alex C. Ruane⁶, Maryse Bourgault⁷, Pierre Martre⁸, Behnam Ababaei^{8,9,10}, Marco Bindi¹¹, Roberto Ferrise¹¹, Robert Finger¹², Nándor Fodor¹³, Clara Gabaldón-Leal¹⁴, Thomas Gaiser², Mohamed Jabloun¹⁵, Kurt-Christian Kersebaum¹, Jon I. Lizaso¹⁶, Ignacio J. Lorite¹⁴, Loïc Manceau⁸, Marco Moriondo¹⁷, Claas Nendel¹, Alfredo Rodríguez^{16,18}, Margarita Ruiz-Ramos¹⁶, Mikhail A. Semenov¹⁹, Stefan Siebert²⁰, Tommaso Stella¹, Pierre Stratonovitch¹⁹, Giacomo Trombi¹⁰ & Daniel Wallach²¹

Understanding the drivers of yield levels under climate change is required to support adaptation planning and respond to changing production risks. This study uses an ensemble of crop models applied on a spatial grid to quantify the contributions of various climatic drivers to past yield variability in grain maize and winter wheat of European cropping systems (1984–2009) and drivers of climate change impacts to 2050. Results reveal that for the current genotypes and mix of irrigated and rainfed production, climate change would lead to yield losses for grain maize and gains for winter wheat. Across Europe, on average heat stress does not increase for either crop in rainfed systems, while drought stress intensifies for maize only. In low-yielding years, drought stress persists as the main driver of losses for both crops, with elevated CO₂ offering no yield benefit in these years.

¹ Leibniz-Centre for Agricultural Landscape Research (ZALF), 15374 Müncheberg, Germany. ² Institute of Crop Science and Resources Conservation, University of Bonn, Bonn 53115, Germany. ³ Department of Agroecology, Aarhus University, Tjele 8830, Denmark. ⁴ Potsdam Institute for Climate Impact Research, Member of the Leibniz Association, Potsdam 14473, Germany. ⁵ Finnish Environment Institute, Helsinki 00260, Finland. ⁶ National Aeronautics and Space Administration Goddard Institute for Space Studies, New York 10025 NY, USA. ⁷ Northern Ag Research Center, Montana State University, 3710 Assiniboine Road, Havre, MT, USA. ⁸ LEPSE, Université Montpellier, INRA, Montpellier SupAgro, 34060 Montpellier, France. ⁹ Native Trait Research, Limagrain Europe, 63720 Chappes, France. ¹⁰ Centre for Crop Science, Queensland Alliance for Agriculture and Food Innovation, University of Queensland, 4069 Toowoomba, Australia. ¹¹ Department of Agri-food Production and Environmental Sciences, University of Florence, P.le delle Cascine 18, 50144 Firenze, Italy. ¹² ETH Zurich, Agricultural Economics and Policy Group, Zürich 8092, Switzerland. ¹³ Agricultural Institute, Centre for Agricultural Research, Hungarian Academy of Sciences, Martonvásár 2462, Hungary. ¹⁴ IFAPA-Centro Alameda del Obispo, P.O. Box 3092, 14080 Córdoba, Spain. ¹⁵ School of Biosciences, University of Nottingham, Loughborough LE12 5RD, UK. ¹⁶ Research Centre for the Management of Agricultural and Environmental Risks (CEIGRAM), Universidad Politécnica de Madrid, Madrid 28040, Spain. ¹⁷ CNR-IBIMET, Via Caproni 8, 50100 Firenze, Italy. ¹⁸ Department of Economic Analysis and Finances, Universidad de Castilla-La Mancha, 45071 Toledo, Spain. ¹⁹ Department of Plant Science, Rothamsted Research, Harpenden AL5 2JQ, UK. ²⁰ Department of Crop Sciences, University of Göttingen, Göttingen 37075, Germany. ²¹ INRA, Castanet-Tolosan 31326, France. Correspondence and requests for materials should be addressed to H.W. (email: webber@zalf.de)

Improving global food security is critical given that over 800 million people remain food insecure¹ and its association with conflict and civil unrest^{2,3}. While rising food prices may benefit net food producers^{4,5} and support long-term development⁶, excessive volatility and extreme price spikes, both linked with crop yield variability⁷, pose serious challenges to achieving food security. Globally, weather fluctuations were found to explain upwards of one-third of current crop yield variability⁸ and much more in well-managed high input systems⁹. Understanding how climate change will affect yield variability, as well as average crop yields, is critical¹⁰.

While information on climate impacts is important to understand the macro-economic implications for food security, enabling appropriate adaptation responses is supported with knowledge on which processes drive yield changes under both average and extreme conditions. Identifying the drivers of yield changes and variability can allow the development of targeted adaptation measures^{11,12} such as insurance solutions against specific weather risks^{13–15}; support planning for long-term investments in irrigation infrastructure; or improve breeding effectiveness, as suitability of adaptive traits changes under climate change and elevated [CO₂]¹⁶. Observational studies have offered considerable insight into the importance of high temperatures compared to precipitation in driving negative yield trends^{17,18} and non-linear yield responses^{19,20}. Subsequent study with a process-based crop model identified drought stress as the probable underlying mechanism of this high temperature response in maize in the USA²¹. High temperatures drive non-linear increases in vapor pressure deficit (VPD), raising evaporative demand and concurrently depleting subsequent water supply²¹. Nevertheless, questions remain about which crop level processes dominate these responses, as potentially confounding effects of higher temperature accelerating development and damaging reproductive organs were not explicitly controlled for, both of which are expected to be larger under drought stress conditions due to canopy heating²².

Similar decompositions of drivers of yield change under climate change scenarios have not been systematically undertaken in large area impact studies. Attempts to do so have relied on inferences made in comparing responses across rainfed and irrigated conditions²³, ignoring effects of transpirational cooling in irrigated systems²⁴. Previous work investigating the shifting importance of heat and drought stress for wheat and sorghum in Northeast Australia is a notable exception²⁵, though this study did not account for interactions between heat and drought stresses.

Here we use an optimally sized^{26,27} multi-model ensemble of six grain maize models and eight winter wheat models, hereafter maize and wheat, respectively, to analyze the drivers of current (1984–2009) yield variability and projected (2040–2069) yield changes. We focus on drivers related to higher temperatures for three representative concentration pathways (RCPs 2.6, 4.5, and 8.5)²⁸ and an ensemble of five climate models (GCMs, Supplementary Figs. 1–3), recognizing that other extreme weather events may be more limiting in specific locations or conditions²⁹. While many processes in crops have a temperature response³⁰, we decompose the effects of warmer temperatures on maize and wheat yields into key mechanisms as: (1) direct effects on potential yield levels through altering crop development rates³¹ and radiation use efficiency (RUE, balance between photosynthetic and respiration responses³⁰); (2) indirect effects on drought as VPD responds non-linearly to higher temperatures increasing water demand; and (3) heat stress impacts resulting from more frequent exposure to very high temperatures. Here heat stress refers to a typically large and irreversible reduction in grain yield and accelerated leaf senescence that occurs when

temperatures are higher than critical thresholds for reproductive damage (e.g., 31 °C for wheat and 35 °C for maize) even for very short periods³².

The use of process-based crop models in this study considering each of these factors and their interactions allow accounting for compensation (accelerated development avoiding heat or drought stress) or reinforcement (drought stress leading to higher crop temperatures and greater heat stress) between mechanisms³³ (Supplementary Tables 1 and 2). Our results suggest that average drought losses will increase for maize, and that drought will drive losses in both crops in low-yielding years. We further investigate implications of warmer temperatures co-occurring with elevated [CO₂]. For C4 crops like maize, the main impact of elevated [CO₂] is improved transpiration efficiency, whereas C3 crops like wheat will additionally experience enhanced photosynthesis and leaf area expansion. In both crops, enhanced transpiration efficiency acts to increase crop temperatures^{34,35} which may intensify heat stress. In C4 crops, the ultimate impact of elevated [CO₂] on yield under drought conditions will likely depend on the drought severity and pattern³⁶. For C3 crops, the effects of elevated [CO₂] on crop water use reduction will depend on its relative effects increasing leaf area and crop temperature (both can increase water use) versus improving transpiration efficiency^{37,38}. Our results here suggest that in driest years, elevated [CO₂] will not be able to mitigate yield losses from drought.

Results and Discussion

Drivers of current yield variability. Mean temperature responses explain approximately one-quarter of the variation in interannual yield variability for both crops (Fig. 1) for current conditions across Europe (Supplementary Fig. 4). These mean temperature effects on potential yields largely manifest as year-to-year variation in the length of the growing season, but also include effects on photosynthesis and respiration. On average, including heat stress effects does not explain additional variation in either crop, though with a few exceptions for key producers in more continental rainfed production conditions (e.g., Romania and Bulgaria, Fig. 1 and Supplementary Fig. 5 for proportion of rainfed to irrigated area). For these countries, consideration of canopy temperature in heat stress simulations improves R^2 values, suggesting the interaction of heat and drought stress is important in these areas. The two crops differ markedly in their response to drought. In maize, including drought accounts for an additional 24% of variation for a total explained variation of 46%. It is notable that the models can only account for minimal variation in maize when irrigated production dominates (Supplementary Fig. 5). This is probably due to the implementation of full irrigation in the models, whereas in reality, deficit irrigation is practiced for maize in many Mediterranean regions³⁹, as well as due to the heterogeneity of irrigation management under water scarcity⁴⁰. For wheat on the other hand, inclusion of drought increases R^2 only marginally. In fact, both observations and simulations have lower interannual variability for wheat than for maize (Supplementary Fig. 6), suggesting that wheat is more tolerant to variable weather than maize—a feature also captured by the models. Romania and Spain are the two notable exceptions among the main wheat producing countries, where inclusion of drought effects in simulations increases the average R^2 to over 40 and 50%, respectively. Most notable is the lack of correlation for the United Kingdom, Germany, and Denmark when water limitation is considered (where at most, only one model had significant R^2). This result is in line with previous research which has demonstrated that wheat yields in Denmark⁴¹ and the United Kingdom⁴² have a negative response to late spring

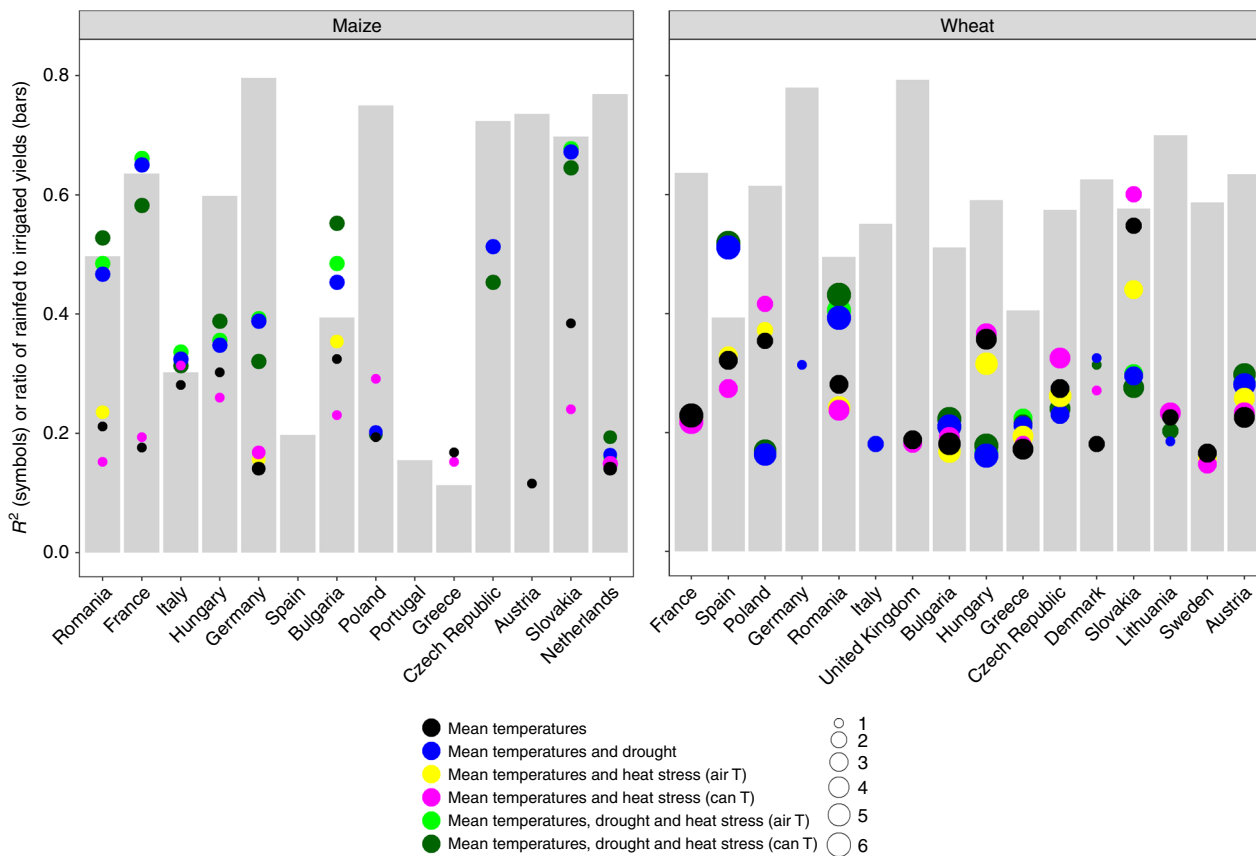


Fig. 1 Climatic variation in historical national crop yields as captured by crop models. The amount of variation in the observed yields as reported in FAO-stats for the period between 1984 and 2009, as quantified by the coefficient of determination (R^2), correlation explained by each of the six simulation sets (black—mean temperature effects only, blue—mean temperature and drought effects, yellow—mean temperature and heat stress with air-temperature effects, magenta—mean temperature and heat stress with canopy-temperature effects, light green—mean temperature, drought, and heat stress with air-temperature effects, and dark green—mean temperature, drought, and heat stress with canopy-temperature effects). Each point represents the mean of the correlation coefficient for the eight winter wheat models and six maize models. The size of the dot indicates the number of models with significant correlations for that simulation set and considered in the respective mean. Gray columns serve as an environmental index indicating the model median average of the ratio of rainfed to irrigated yields for each country. For each plot, countries are ordered by production area in descending order. Note that simulations were only for winter wheat, whereas FAO-stats does not distinguish winter and spring wheat

and summer rainfalls, due to disease, water logging, and lodging. None of the models considered disease or lodging, while the one model including more detailed accounting of water logging has significant R^2 values for Germany and Denmark. Results are largely similar at the NUTS2 (Nomenclature des Unités territoriales statistiques 2) level for both crops (Supplementary Figs. 7 and 8), with increased model skill at the NUTS2 level at high levels of variability in the yield statistics (Supplementary Fig. 9).

Projected yield losses under climate change. Across Europe, maintaining current genotypes, sowing dates, and the mix of rainfed and irrigated land use would result in a 20% decrease of maize yields by 2050, irrespective of consideration of $[CO_2]$ fertilization (Fig. 2). Winter wheat presents a very different story with projected yield increases of 4% when $[CO_2]$ fertilization is accounted for, versus a 9% decline without. We cautiously consider these results valid across our crop model by GCM ensemble. However, at the level of scenarios the magnitude and direction of change differs between crops and depending on $[CO_2]$ fertilization, though we cannot conclusively test these interactions for our model medians (Supplementary Table 3).

While it is beyond the scope of the present study to address, a number of questions exist regarding statistical treatment of multi-model ensembles^{43,44}, and more specifically combining (unbalanced) ensembles. Beyond the challenge of testing three-way interactions of model medians, modeling studies such as ours violate the standard assumption that error terms (considered here as crop model by GCM combinations) are random and independent. Nevertheless, we have attempted a number of different tests and we consider our results valid when most tests agree (Supplementary Tables 3 to 6).

A sensitivity analysis reveals that most uncertainty in maize projections results from use of different GCMs or crop models, whereas consideration of $[CO_2]$ fertilization effects has a very large influence on the magnitude and sign of the simulated impacts for wheat (Supplementary Fig. 10). Due to our study design (CO_2 effects confounded with RCPs), we do not isolate the uncertainty of model response to elevated $[CO_2]$, though comparison of the main and total effects for the crop models and CO_2 terms suggests uncertainty across crop models. While responses to elevated $[CO_2]$ for C3 crops in non-water-limiting conditions are fairly clear and validated in Free Air CO_2 Enrichment (FACE) experiments^{37,45}, the response under drought is more varied across crops, locations, and years^{35,36,46}, as discussed below.

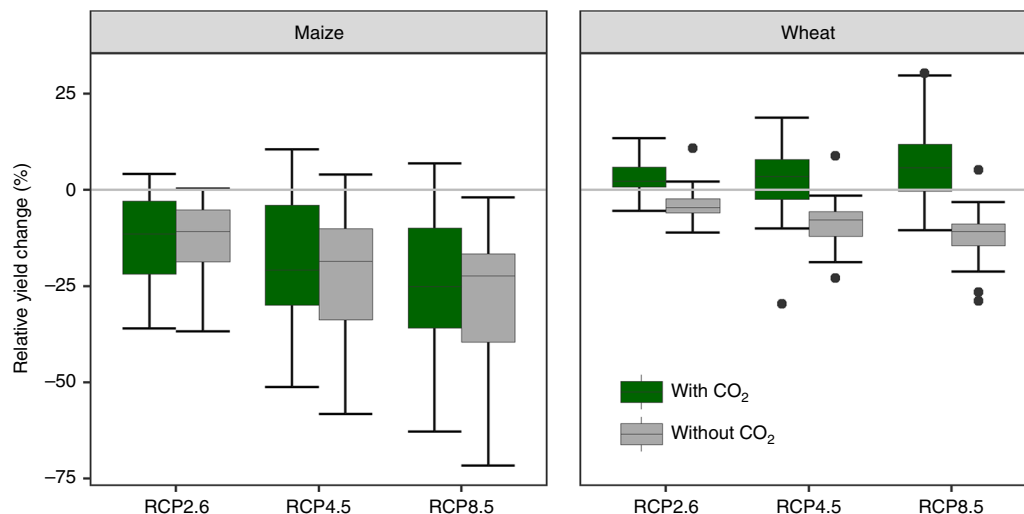


Fig. 2 Projected changes in European maize and wheat yields for current mix of irrigated and rainfed land use. Relative yield changes were estimated for the period 2040 to 2069 compared to the baseline period (1981–2010) for three representative concentration pathways (RCPs). The boxplots depict 25th to 75th percentile values across the crop models (eight for winter wheat and six for maize) and GCMs (two for RCP2.6 and five for RCPs 4.5 and 8.5). Top (bottom) whiskers extend to the minimum (maximum) of the maximum (minimum) value or the 75th (25th) percentile value plus (minus) 1.5 times the difference between the 75th and 25th percentile values. Circles indicate outliers. Green bars indicate yield changes considering CO_2 fertilization effects and gray bars indicate changes without CO_2 fertilization. Yields at the pixel level were aggregated to EU level considering baseline production areas

Drought persists as main driver of losses. To understand what drives yield changes under climate change, we decompose yields at each of the national and European (EU) level for rainfed systems into losses from potential levels due to: drought, heat stress, and the combination of drought plus heat for the baseline and three RCPs (Fig. 3). Additionally, for each of the three RCPs, changes in potential yield levels between the respective scenario and the baseline are examined to quantify the direct effects of warmer mean temperatures versus elevated $[\text{CO}_2]$. The decomposition is conducted for both average yield levels and yield levels of the lowest decile for the baseline and each RCP (Fig. 3). Results presented in Fig. 3 serve to illustrate the procedure followed to decompose yields, as well as highlight the extent of the various yield-limiting factors, and how they shift with the climate change scenarios. For both crops and across scenarios, drought is by far the larger yield-limiting climatic factor across Europe.

Figure 4 provides a summary of the drivers of EU aggregate rainfed yield levels and projected shifts under climate change. Both changes in potential yields relative to the baseline potential and the absolute shifts in the losses from drought and heat relative to scenario potential are presented. For average years and both crops, warmer temperatures result in decreased potential yields of approximately 10% relative to the baseline potential. There is large uncertainty in this response for maize due to GCMs (Supplementary Fig. 10) and how crop models simulate crop development in response to warm temperatures (Supplementary Fig. 11). Some models and GCM combinations indicate increased potential yield levels relative to the baseline potential, and this is related to average conditions becoming more favorable in cooler climates. In the case of wheat, yield gains from CO_2 largely compensate for losses from accelerated development such that no change in potential yields was projected (Fig. 4). As for drought, our analysis showed different responses in maize and wheat, with increasing yield losses relative to scenario potential in maize versus remaining constant at baseline levels for wheat. While CO_2 emerges as being significant to reduce the impact of drought losses on average, the statistical analyses of yield losses due to drought relative to scenario potential (Supplementary Table 4) identify an interaction between crops and CO_2 , suggesting that the reduction in drought losses with CO_2 is more important

for maize than wheat. Heat stress does not increase for either crop.

These EU aggregated yields mask a lot of spatial variability across Europe. Some regions in Eastern and Northern Europe experience a reduction in drought stress for maize (Fig. 5a), and consideration of elevated $[\text{CO}_2]$ marginally increases this effect. This occurs even as growing season water use increases in these regions for some GCMs and RCPs (Supplementary Fig. 12). Similarly, drought stress intensifies for wheat production in large parts of Eastern Europe, while it is reduced in large parts of France and Southern Europe.

Drought drives losses in low-yielding years. While the changes from current yield levels are informative, risk perceived by farmers and transmitted to markets may be better visualized by looking at what drives production risk in the low-yielding years as contrasted with average years. In these low-yielding years, losses are due to drought and not heat stress (Fig. 4b). Drought is responsible for 11 and 5%-point additional losses across scenarios in maize and wheat, respectively. Elevated $[\text{CO}_2]$ is not able to alleviate drought losses in these years for either crop. This confirms the finding that extremely hot days in the USA drove yield losses in maize due to non-linear response of VPD to temperatures, and not due to heat stress²¹.

Elevated carbon dioxide offers no benefit in driest years. C4 crops like maize are expected to benefit from elevated $[\text{CO}_2]$ when water is limiting, reducing their sensitivity to drought⁴⁷, with relatively limited effects on potential yields^{36,37}. Projecting the extent to which elevated $[\text{CO}_2]$ may reduce the drought sensitivity of C3 crops like wheat is more complicated, as enhanced leaf growth under elevated $[\text{CO}_2]$ in C3 crops may lead to increased water use, depending on the vigor of the crop and patterns of soil water depletion^{35,38}. Our study confirms the effect of elevated $[\text{CO}_2]$ on reducing average losses due to drought in both crops, with greater relative effects for maize than wheat (Fig. 4a) and in countries where drought was not strongly limiting yields (e.g., Germany, Denmark, Poland, the Netherlands; Fig. 5a). However, elevated $[\text{CO}_2]$ is not able to offset additional

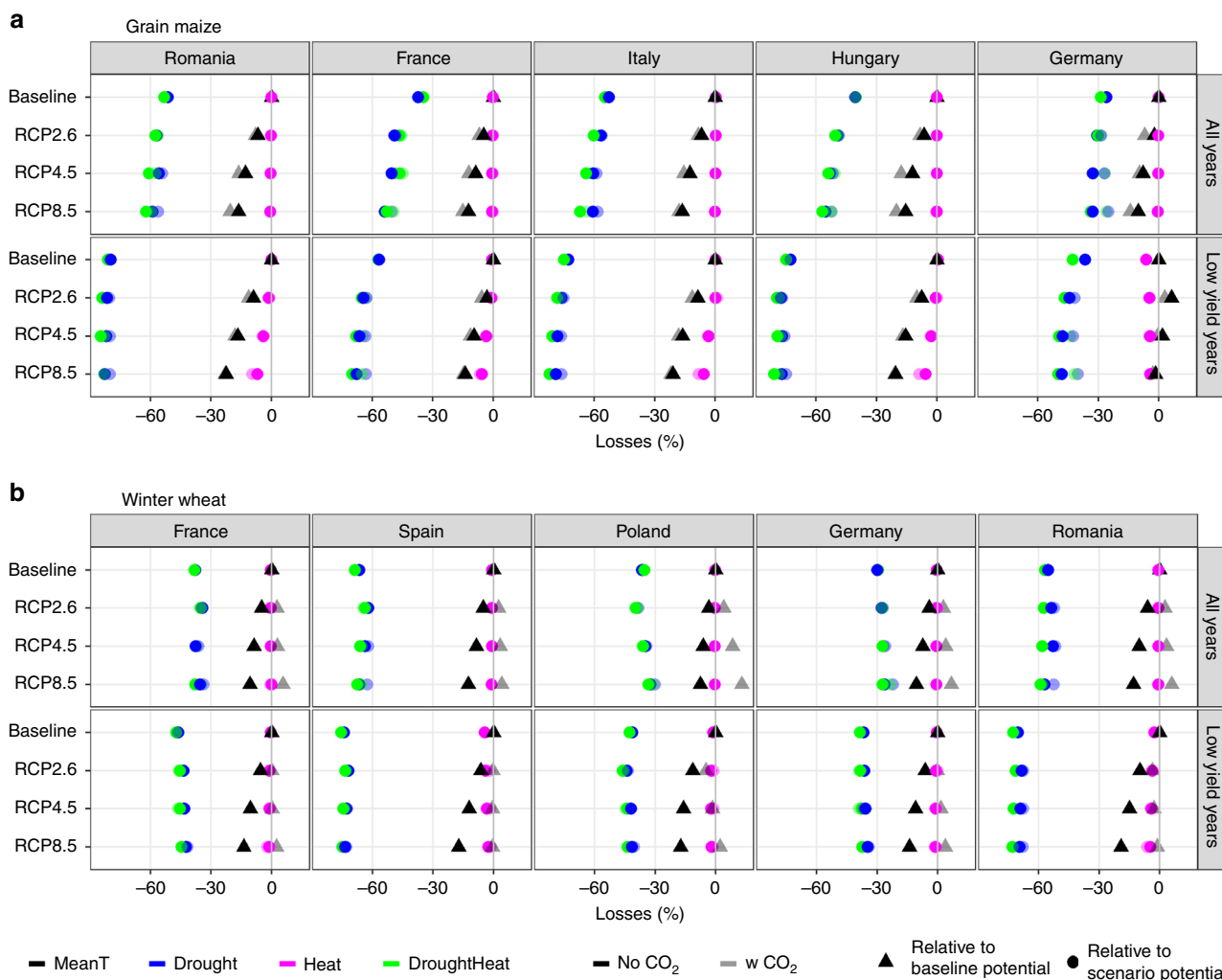


Fig. 3 Drivers of yield losses in average and low-yielding years for rainfed systems by country. Drivers of yield change in current baseline climate (1981-2010) and three climate scenarios (RCPs 2.6, 4.5, and 8.5) in the period 2040 to 2069 for **a** grain maize and **b** winter wheat. Drivers of yield levels are shown for the average of all years (top row in both panels), and drivers of yields levels for years with yields in the lowest decile (bottom row in both panels). The shape of the symbol indicates the period in which changes are expressed as relative to (triangles are for changes relative to the baseline potential and circles are losses relative to the respective scenario potential), whereas the color indicates the drivers considered (black are mean temperature effects, blue are drought, magenta is heat, and green is the combination of drought and heat). The change in potential yields resulting from the mean temperature effects are shown with black triangles for each scenario relative to the baseline potential. For the other drivers, changes indicated by circles are relative to scenario potential yield. In all cases, the shading indicates if CO₂ fertilization was considered (dark symbols consider CO₂, light symbols do not consider CO₂). Results are shown for the five countries with the largest production area in Europe for each crop, listed by production area

losses from drought in the years with yields in the lowest decile in either crop (Fig. 4b), in agreement with experiments with soybean³⁵ and modeling analysis²³ for maize, wheat, and soybean. While most of our wheat models simulate an effect similar to increased transpiration efficiency under elevated [CO₂], wheat also experiences higher leaf area index under elevated [CO₂], and we speculate that this, together with higher water demand under warmer temperatures, may lead to higher water use earlier in the season, and an earlier depletion of soil water⁴⁸. There is considerable variation between models in capturing this response (Supplementary Fig. 10). In fact, one study evaluated 21 maize crop models and found most models unable to capture the very large response to elevated [CO₂] under drought⁴⁹. However, that study was based on only 1 year of data in which the crops experienced drought. This contrasts with a soybean experiment over 7 years, which detected a declining response to elevated [CO₂] as drought stress intensified³⁵, and this was successfully simulated by a process-based crop model⁵⁰. These

results highlight the clear need for continued model improvement based on FACE experiments under different levels of water limitation, temperature regimes, and production conditions^{36,49}.

Implications for informing adaptations. Our results suggest different options for adapting European rainfed maize and winter wheat production to climate change. While both crops mature earlier under warmer mean temperatures (Supplementary Fig. 11), in the absence of other drought adaptive traits⁵¹ or earlier sowing, there may be limited opportunity to adopt longer season maize varieties as drought stress intensifies in most regions (except Northern Europe) (Fig. 5). On the other hand, longer season varieties may be possible in many regions for wheat. However, this would require more study, as heat stress is expected to intensify if wheat growth continues into the hot summer period. Importantly from a risk perspective, drought was the primary driver of losses in years with the lowest yields. The

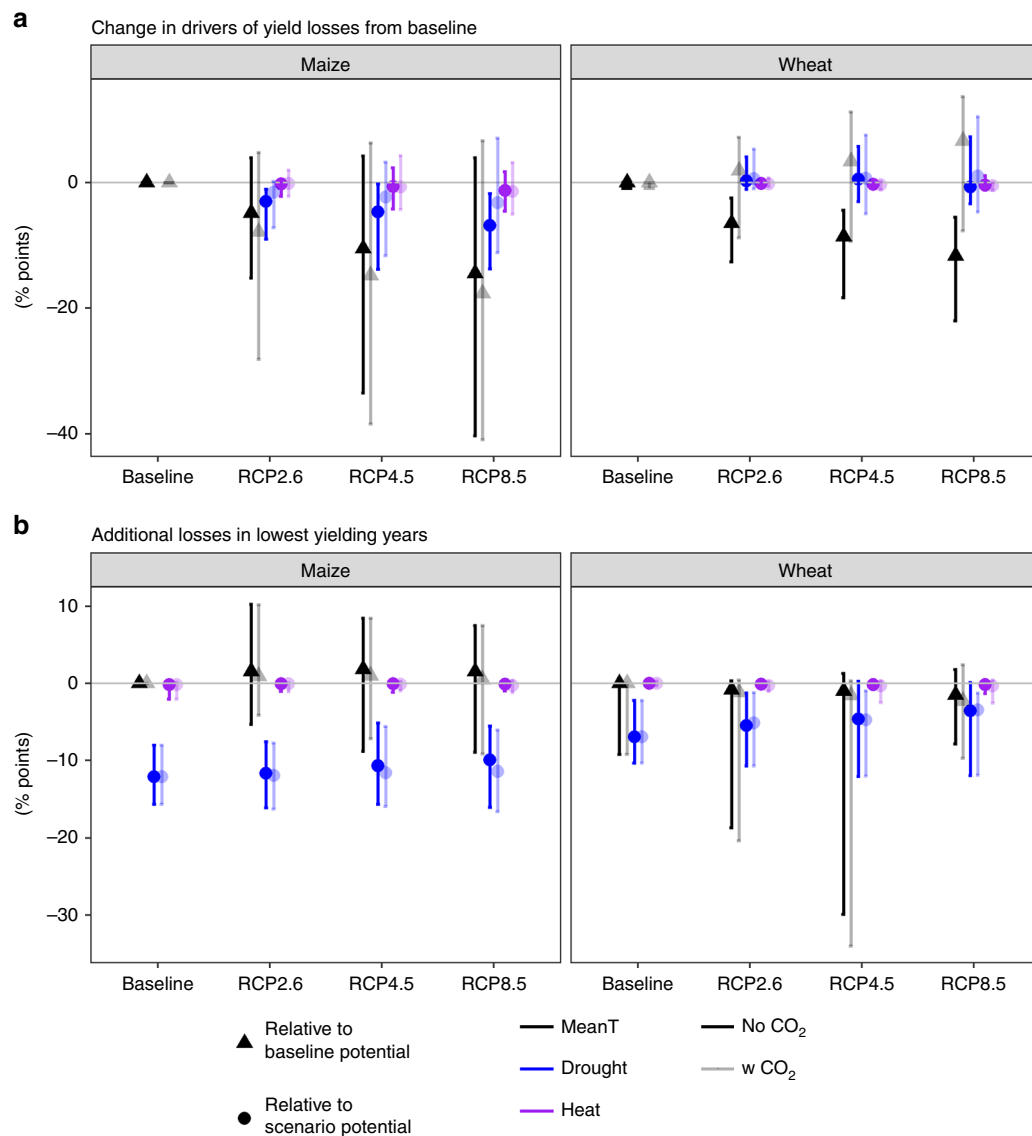


Fig. 4 Changes in drivers of yield losses in average and low-yielding years for European rainfed systems. Baseline refers to the period 1981 to 2010 and the scenario period is 2040 to 2069. **a** Two measures of change in average yields are presented. The black triangles indicate changes in potential yields due to mean temperature effects relative to potential yields in the baseline period (1981–2010). The second type of change shown is the absolute difference between the scenario and baseline (circles) of drought (blue) or heat (purple) losses relative to potential levels in the respective scenario (circles) for three representative concentration pathways (RCPs). **b** Difference (% points) between average yield levels and yields in lowest decile of losses for losses from potential yield levels due to mean temperature effects (black), drought limitation (blue), or heat limitation (purple) for the baseline period (1981–2010) and three RCPs (2040–2069). For all panels, maize is shown on the left and winter wheat on the right. Results are shown with (darker shading) and without (lighter shading) CO₂ fertilization effects. Data shown are the EU aggregates with median values across crop model and GCM combinations with error bars indicating the 10th and 90th percentiles

greater intensification of drought stress for maize than wheat with the same GCMs and RCPs largely reflects that wheat is sown in the autumn with cooler temperatures as compared to maize, which grows in the summer. VPD of the air, a key driver of crop water use, is a non-linear function of temperature, such that increases in temperature in warmer periods will create relatively larger increases in water demand. Therefore, use of autumn sown crops may very well be among the options for enhancing resilience of cropping systems to climate change in Europe.

While these European patterns are informative, our analysis of baseline yield variability confirms that adaptation planning must be conducted at the local level and consider economic drivers⁵². The high degree of spatial variability in drivers and the variable number of models describing yield variability in each country

reinforces earlier findings of conducting adaptation planning at local scales with models that consider the most relevant factors⁵³. The baseline analysis also provides a, albeit limited, degree of validation for our impact projections. We demonstrate that year-to-year maize yield variability is sensitive to drought stress, and this drought stress is projected to increase even after accounting for accelerated crop development. On the other hand, winter wheat yield variability is shown to be relatively insensitive to drought and our model ensemble projects that average yield limitation would not increase due to drought. We can have some confidence that for each crop, the drivers of yield change that emerge as important in the projections are built on models that had skill in explaining these drivers in the baseline. The important exception here is with wheat and drought, which

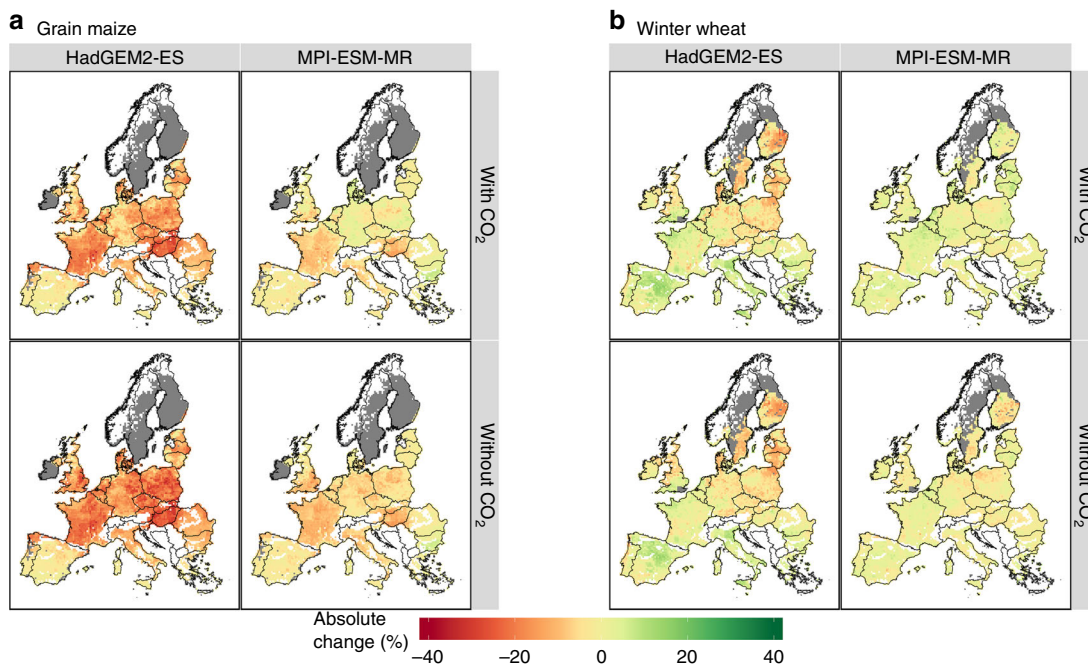


Fig. 5 Change in yield losses due to drought. Change in yield losses due to drought in **a** grain maize and **b** winter wheat for 2040–2069 for RCP4.5 relative to the baseline period (1981–2010). Results are presented with (top row) and without (bottom row) consideration of CO₂ fertilization effects and two GCMs: HadGEM2-ES (first column) and MPI-ESM-MR (second column). Results shown are the median response across crop models

emerged important in low-yielding years, though our ensemble skill decreases in many instances when drought effects are included. This leads to a final consideration on the possibility of weighting ensemble member projections based on performance in a historical period. We opt not to do this for reasons elaborated for climate model ensembles^{43,44}. There is no good scientific basis to assume that models that capture past variability will best describe projected response⁴⁴, as relative importance of processes are expected to shift under new climatic conditions. Given the importance of understanding how crops will respond to climate change, continued work to evaluate the robustness of impact study results is needed.

Methods

Climate data. Climate data from the baseline period (1980–2010) were from the Joint Research Center’s (JRC) Agri4Cast database (version 1.0) and included daily minimum, average and maximum surface air temperature, precipitation, 10-m wind speed, global radiation, and actual vapor pressure at 25 km resolution. Wind speed at 2-m height was derived using procedures in Allen et al.⁵⁴. The climate projections for the future scenarios were available for a period of 2040–2069 for five climate models (GCM: GFDL-CM3, GISS-E2-R, HadGEM2-ES, MIROC5, and MPI-ESM-MR) under two forcing scenarios (RCP4.5 and RCP8.5). For RCP2.6, only two GCMs (HadGEM2-ES and MPI-ESM-MR) from the group used with the other RCPs were available with all required input variables at the time the study was conducted. The climate projections were available at a 0.5° resolution and downscaled to the resolution of the baseline data by assigning to each 25 km grid, the climate projection data in which its center point was located. The climate projections were created using the enhanced delta change method that applies changes simulated by GCMs for aspects of temperature and precipitation variability in addition to changes in mean climate, as described in Ruane et al.⁵⁵. Global radiation was increased by 10% when a wet day in the baseline became dry in the scenario and vice versa decreased by 10% when a dry day turned into a wet day. The five GCMs were selected out of a larger ensemble from CMIP5 (Table 1) to give a range of climatic conditions for Europe similar to the approach described in Ruane and McDermid⁵⁶, but with additional selection across a range of RCP forcings. Note that grid cells were excluded from analysis (maps and aggregation to NUTS2, national or EU levels) when differences in elevation between cropped areas and the mean elevation of the grid cell resulted in temperature differences of >1 °C. The climate data can be accessed at: http://open-research-data-zalf.ext.zalf.de/ResearchData/DK_59.html.

Table 1 Climate models and forcing scenarios selected from the CMIP5 ensemble			
GCM	RCP2.6	RCP4.5	RCP8.5
GFDL-CM3		x	x
GISS-E2-R		x	x
HadGEM2-ES	x	x	x
MIROC5		x	x
MPI-ESM-MR	x	x	x

Soil data. Soil data were obtained from the European Soil database from the JRC European Soil Data Portal (<http://eusoils.jrc.ec.europa.eu/>). The layers from the European soil database used were: the textural classes, depth available to roots, total available water content (TAWC), bulk density (BD), and soil organic carbon (SOC) and were available at 1-km resolution for each of the top soil (0–30 cm) and subsoil (30–max. depth) layers. Soil layers were resampled to 250 m to match the Corine 2006 land cover raster map Version 17 (123/2013) at 250 m (http://www.eea.europa.eu/data-and-maps/data/ds_resolveuid/a47ee0d3248146908f72a8fde9939d9d). It was used to select only agricultural land to in turn aggregate the soil data information. This version of the map did not contain Greece, so agricultural land in Greece was from the Corine Land Cover 2000 raster data v16. Soil data corresponding to: non-irrigated arable land, permanently irrigated land, rice fields, annual crops associated with agriculture, with significant areas of natural vegetation were selected. We also excluded any soils which had depths <40 cm. Depth available to roots, TAWC, BD, and SOC were aggregated to 25 km by selecting their median values, while soil texture (top and subsoil) was based on the area majority in each 25-km unit. The soil water parameters input for permanent wilting point and soil saturation were selected based on the resulting textural classes, and field capacity (FC) was calculated from WP, TAWC, and the soil depth. The initial soil water content was set at 30% depletion of the readily available water on the day of sowing. While previous studies have demonstrated the uncertainty introduced to simulation results by resetting soils water⁵⁷, we opted to reset to avoid uncertainty that would arise from differing methods, skill, and assumptions required to run the models continuously over several seasons. Further, it was beyond the scope of this study to specify crop rotation sequences across Europe under climate change.

Simulations. Simulations were conducted for both crops on agricultural land for the EU-27 with gridded simulations at 25-km resolution (8157 simulation units). Six maize models and eight winter wheat models were used

(see Supplementary Table 4 for details). For each simulation unit and climate scenario, six simulation treatments were conducted: T1, responsiveness to mean temperatures, but no heat or water limitation; T2, responsiveness to mean temperatures and heat stress using air temperature, but no water limitation; T3, responsiveness to mean temperatures and heat stress using simulated canopy temperature, but no water limitation; T4, responsiveness to mean temperatures and drought, but no heat stress; T5, responsiveness to mean temperatures, drought, and heat stress using air temperature; and T6, responsiveness to mean temperatures, drought, and heat stress using simulated canopy temperature. To simulate without effects of heat stress, models followed one of two procedures. The first was to switch off modules or routines to simulate accelerated senescence or impacts on grain number or yield when a high temperature threshold was surpassed. The second procedure used was to set threshold temperature limits very high such that no heat stress damage was simulated. To remove the effects of drought stress, models assumed full and automatic irrigation. Simulations for each climate scenario were conducted twice: once with ambient CO₂ set at 360 ppm and once with elevated [CO₂] at 442, 499, and 571 ppm for RCPs 2.6, 4.5, and 8.5, respectively.

Crop-model properties. Six crop models simulated both maize and winter wheat (4M⁵⁸; CROPSYST, CR^{59,60}; FASSET, FA^{61,62}; HERMES, HE⁶³; MONICA, MO^{64,65}; and SIMPLACE-Lintul5, L5⁶⁶), three models simulated only winter wheat (SIRIUS 2015, S2^{67–69}; SiriusQuality v3, SQ^{70,71}; and SSM-Wheat, SS⁷²), while IXIM, IX⁷³ simulated only grain maize. All crop models included a heat stress response that reduces the final yield under high temperatures as well as mechanisms to reduce growth and leaf area expansion under water limitation. Likewise, each of the models account for the effects of [CO₂] on either RUE or photosynthesis. The [CO₂] effects on transpiration include reducing the transpiration rates (FA, L5, 4M, and IX), affecting the stomatal resistance (HE, MO, and IX), or increasing the transpiration efficiency (SS). SQ and S2 models do not include effects of [CO₂] on transpiration, though they are applied only to wheat. Seven models include algorithms to estimate crop canopy temperature (FA, L5, HE, SS, SQ, S2, and CR) allowing the interaction of high temperature, drought stress, and [CO₂]²². Key details and references of the model's treatment of heat and drought stress are given in Supplementary Tables 5 and 6.

Yield aggregation. The MIRCA2000 global data set on crop area⁷⁴ was used to aggregate yield simulations at 25 km to the European, national, or NUTS2 levels. MIRCA2000 provides irrigated and rainfed crop areas around the year 2000 with a spatial resolution of 9.2 km at the equator. The data on annual harvest area was downloaded from: https://www.uni-frankfurt.de/45218031/data_download. Comparison to national yield statistics considered the share of irrigated and rainfed production, whereas most of the analysis in the study considered rainfed and irrigated production separately. Aggregate production was determined as the product of yield by production area in each 25-km simulation unit and production at NUTS2, national, or European level was determined as the sum of production in all pixels at the respective level. Finally, yield was determined at various scales as production divided by production area.

Drivers of yield loss. Drivers of yield losses presented in the main paper are for rainfed production areas. Losses due to mean temperature effects were determined as the relative change in potential yields for each climate scenario relative to the baseline potential yield levels. For NUTS2, national or European levels, potential yields were considered only on land that had rainfed production. Losses due to drought were computed as the difference between potential yields and water-limited yields, divided by the potential yields, considering only yields on land that had rainfed production. Losses due to heat stress under irrigated conditions were computed as the difference between potential yields and heat-limited yields (using canopy temperature for the models that simulated it and air temperature for the other models), divided by the potential yields, considering only yields on land that had rainfed production. Heat losses under rainfed conditions were computed as the difference between losses due to combined heat and drought stress and only drought stress, relative to potential yields considering only yields on land that had rainfed production. The change in losses due to drought and heat stress in each climate scenario were computed as relative changes from the baseline period for both all years and for years with yields in the lowest decile over the respective scenario period. Finally, drivers of losses were computed for both cases with and without inclusion of CO₂ fertilization effects. The difference between the two sets of losses was used to estimate the size of the CO₂ fertilization effect and is considered as a source of uncertainty in the response of crops to climate change.

Comparison of simulations and observed yield statistics. Finally, though multi-model ensembles are increasingly used as they capture uncertainty associated with modeled processes, a frequent concern with their use in large area climate impact assessments is the limited opportunity to evaluate their performance⁹. Here we assessed the skill of our 25-km resolution crop model ensemble to explain past (1984–2009) yield variability based on both national and sub-national yield statistics. Time series of national production amounts and areas from Food and Agriculture Organization statistics (FAO-stats) were downloaded for the period from 1980 to 2010. Time series of NUTS2 level production amounts and areas were

from the CAPRI (Comparative Analysis of PRotein-protein Interaction) database for the period from 1982 to 2010. To enable comparison of yield observations to the simulations, yield observations were de-trended by computing annual anomalies from a 5-year moving mean average of a 5-year window ($t - 2$ to $t + 2$), with 3-year windows at both ends ($t - 1$ to $t + 1$) of the time series in order to not lose too many years from the time series, as reported in previous studies^{9,75}. Results were largely similar when a linear trend was used, but some countries (e.g., Spain) had a clear break point, though this varied between countries. Six simulation cases were compared to the observations using correlation analysis, to determine the level of variability in the observations that could be explained by the simulations. The cases that were compared were: (1) mean temperature effects with no heat stress or water limitation, (2) mean temperature and heat stress effects with no water limitation, (3) mean temperature and drought effects with no heat stress (used an area-based weighted average of irrigated and rainfed yields to approximate actual degree of irrigation), and (4) a combination of mean temperature effects, drought, and heat stress (used an area-based weighted average of irrigated and rainfed yields to reproduce actual degree of irrigation). Simulation sets (5) and (6) were conducted by a subset of models by repeating simulations for (2) and (4) using both air and canopy temperature to enable the interaction of water limitation and heat stress.

Uncertainty decomposition. To determine the contribution of the i factors (X_i ; GCMs, crop models, RCPs, consideration of [CO₂]) to the total variability in EU aggregate simulated crop yields, Y , for the current area of rainfed and irrigated production, main effects (ME _{i} , first order) and total effects (TS _{i}) sensitivity indices were computed. Following Monod et al.⁷⁶, ME _{i} and TS _{i} sensitivity index was determined as:

$$ME_i = \frac{\text{var}(E[Y|X_i])}{\text{var}(Y)} \quad (1)$$

and

$$TS_i = 1 - \frac{\text{var}(E[Y|X_{-i}])}{\text{var}(Y)}, \quad (2)$$

where var is the variance and $E[Y|X_i]$ denotes the expected value of Y across factors X_i , while $E[Y|X_{-i}]$ is the expected value of Y across all factors except X_i . Sensitivity analyses were estimated in R version 3.2.2 using the RStudio software.

Statistical analyses. A number of statistical tests were considered in R for the (1) relative changes in EU aggregate yield, (2) losses due to drought stress on average, (3) losses due to heat stress on average, and (4) drivers of heat stress in the years with yields in the lowest decile. The treatment factors considered for the first three variables were: crop (fixed), CO₂ effects (fixed), RCP (fixed), and GCM and crop models were treated as error terms or as random factors depending on the test, as explained below. Finally, in testing the fourth variable, the driver of stress was also considered as a fixed factor. The tests conducted included two-way fixed-effects test on the medians (med2way and mcp2a from the WRS2 package), three-way fixed-effects analysis of variance on the means, and general linear mixed model tests on the means by residual maximum likelihood (asreml in asreml package) with different assumptions about the crop models and/or GCMs as being random factors or error terms. Results were first aggregated to EU level for each crop-model and GCM combinations. In doing so, we acknowledge that we violate a central tenant of the statistical tests we conducted in that the error terms are neither random nor independent. As none of the tests are strictly appropriate for our design, we consider our results valid when most tests agree.

Code availability. All crop models that support the study are available for download in the following links or by contacting the listed developer: FASSET: www.fasset.dk and by contacting Prof. Olesen, jeo@agro.au.dk; SIMPLACE: <http://www.simplace.net/Joomla/index.php/download>; HERMES: model description, executable code and institutional contact at: http://www.zalf.de/en/forschung_lehre/software_downloads/Pages/default.aspx; MONICA: <https://github.com/zalf-rpm/monica>; 4M is available at FigShare with the identifier <https://doi.org/10.6084/m9.figshare.6260069>; SSM: the code is embedded in a VBA macro at <https://sites.google.com/site/cropmodeling/-6-ssm-wheat>; SiriusQuality (<http://www1.clermont.inra.fr/siriusquality/>) at <https://forgemia.inra.fr/siriusquality/sqcode/Release>; SIRIUS 2015: <https://sites.google.com/view/sirius-wheat/>; and DSSAT_IX: <https://github.com/DSSAT/dssat-csm>.

Data availability. The modeling protocol followed to generate the simulation results is included as Supplementary Methods. The climate data can be accessed at: http://open-research-data-zalf.ext.zalf.de/ResearchData/DK_59.html (<https://doi.org/10.4228/ZALF.DK.59>). Individual crop model codes can be accessed at the links provided in the Methods. All other relevant data are available from the corresponding author on request.

Received: 22 March 2018 Accepted: 7 September 2018

Published online: 12 October 2018

References

1. FAO, IFAD, UNICEF, WFP & WHO. *Building Resilience for Peace and Food Security* (FAO, Rome, 2017).
2. Kalkuhl, M., von Braun, J. & Torero, M. (eds). *Food Price Volatility and Its Implications for Food Security and Policy* 3–31 (Springer, Cham, Switzerland, 2016).
3. Bellemare, M. F. Rising food prices, food price volatility, and social unrest. *Am. J. Agric. Econ.* **97**, 1–21 (2015).
4. Brown, M. E., Hintermann, B. & Higgins, N. Markets, climate change, and food security in West Africa. *Environ. Sci. Technol.* **43**, 8016–8020 (2009).
5. Hertel, T. W. Food security under climate change. *Nat. Clim. Change* **6**, 10 (2016).
6. Swinnen, J. & Squicciarini, P. Mixed messages on prices and food security. *Science* **335**, 405–406 (2012).
7. Tadasse, G., Algieri, B., Kalkuhl, M. & von Braun, J. in *Food Price Volatility and its Implications for Food Security and Policy* (eds Kalkuhl, M., von Braun, J. & Torero, M.) 59–82 (Springer International Publishing, Switzerland, 2016).
8. Ray, D. K., Gerber, J. S., MacDonald, G. K. & West, P. C. Climate variation explains a third of global crop yield variability. *Nat. Commun.* **6**, 5989 (2015).
9. Müller, C. et al. Global gridded crop model evaluation: benchmarking, skills, deficiencies and implications. *Geosci. Model Dev.* **10**, 1403 (2017).
10. Wheeler, T. & Von Braun, J. Climate change impacts on global food security. *Science* **341**, 508–513 (2013).
11. Di Falco, S., Veronesi, M. & Yesuf, M. Does adaptation to climate change provide food security? A micro-perspective from Ethiopia. *Am. J. Agric. Econ.* **93**, 829–846 (2011).
12. Smit, B. & Pilifosova, O. Adaptation to climate change in the context of sustainable development and equity. *Sustain. Dev.* **8**, 9 (2003).
13. Vermeulen, S. J. et al. Options for support to agriculture and food security under climate change. *Environ. Sci. Policy* **15**, 136–144 (2012).
14. Dalhaus, T. & Finger, R. Can gridded precipitation data and phenological observations reduce basis risk of weather index-based insurance? *Weather Clim. Soc.* **8**, 409–419 (2016).
15. Ricome, A. et al. Are subsidies to weather-index insurance the best use of public funds? A bio-economic farm model applied to the Senegalese groundnut basin. *Agric. Syst.* **156**, 149–176 (2017).
16. Christy, B. et al. Benefits of increasing transpiration efficiency in wheat under elevated CO₂ for rainfed regions. *Glob. Change Biol.* **24**, 1965–1977 (2018).
17. Hochman, Z., Gobbett, D. L. & Horan, H. Climate trends account for stalled wheat yields in Australia since 1990. *Glob. Change Biol.* **23**, 2071–2081 (2017).
18. Lobell, D. B., Schlenker, W. & Costa-Roberts, J. Climate trends and global crop production since 1980. *Science* **333**, 616–620 (2011).
19. Lobell, D. B., Bänziger, M., Magorokosho, C. & Vivek, B. Nonlinear heat effects on African maize as evidenced by historical yield trials. *Nat. Clim. Change* **1**, 42–45 (2011).
20. Schlenker, W. & Roberts, M. J. Nonlinear temperature effects indicate severe damages to US crop yields under climate change. *Proc. Natl Acad. Sci. USA* **106**, 15594–15598 (2009).
21. Lobell, D. B. et al. The critical role of extreme heat for maize production in the United States. *Nat. Clim. Change* **3**, 497–501 (2013).
22. Webber, H. et al. Physical robustness of canopy temperature models for crop heat stress simulation across environments and production conditions. *Field Crops Res.* **216**, 75–88 (2018).
23. Schauburger, B. et al. Consistent negative response of US crops to high temperatures in observations and crop models. *Nat. Commun.* **8**, 13931 (2017).
24. Siebert, S., Webber, H., Zhao, G. & Ewert, F. Heat stress is overestimated in climate impact studies for irrigated agriculture. *Environ. Res. Lett.* **12**, 054023 (2017).
25. Lobell, D. B. et al. The shifting influence of drought and heat stress for crops in northeast Australia. *Glob. Change Biol.* **21**, 4115–4127 (2015).
26. Martre, P. et al. Multimodel ensembles of wheat growth: many models are better than one. *Glob. Change Biol.* **21**, 911–925 (2015).
27. Bassu, S. et al. How do various maize crop models vary in their responses to climate change factors? *Glob. Change Biol.* **20**, 2301–2320 (2014).
28. van Vuuren, D. P. et al. The representative concentration pathways: an overview. *Clim. Change* **109**, 5–31 (2011).
29. Trnka, M. et al. Adverse weather conditions for European wheat production will become more frequent with climate change. *Nat. Clim. Change* **4**, 637 (2014).
30. Parent, B., Turc, O., Gibon, Y., Stitt, M. & Tardieu, F. Modelling temperature-compensated physiological rates, based on the co-ordination of responses to temperature of developmental processes. *J. Exp. Bot.* **61**, 2057–2069 (2010).
31. Craufurd, P. & Wheeler, T. Climate change and the flowering time of annual crops. *J. Exp. Bot.* **60**, 2529–2539 (2009).
32. Eyshi Rezaei, E., Webber, H., Gaiser, T., Naab, J. & Ewert, F. Heat stress in cereals: mechanisms and modelling. *Eur. J. Agron.* **64**, 98–113 (2015).
33. Boote, K. J., Jones, J. W., White, J. W., Asseng, S. & Lizaso, J. I. Putting mechanisms into crop production models. *Plant Cell Environ.* **36**, 1658–1672 (2013).
34. Kimball, B. et al. Free-air CO₂ enrichment and soil nitrogen effects on energy balance and evapotranspiration of wheat. *Water Resour. Res.* **35**, 1179–1190 (1999).
35. Gray, S. B. et al. Intensifying drought eliminates the expected benefits of elevated carbon dioxide for soybean. *Nat. Plants* **2**, 16132 (2016).
36. Kimball, B. A. Crop responses to elevated CO₂ and interactions with H₂O, N, and temperature. *Curr. Opin. Plant Biol.* **31**, 36–43 (2016).
37. Leakey, A. D. et al. Elevated CO₂ effects on plant carbon, nitrogen, and water relations: six important lessons from FACE. *J. Exp. Bot.* **60**, 2859–2876 (2009).
38. Urban, D. W., Sheffield, J. & Lobell, D. B. Historical effects of CO₂ and climate trends on global crop water demand. *Nat. Clim. Change* **7**, 901–905 (2017).
39. Lorite, I. J., Mateos, L. & Fereres, E. Evaluating irrigation performance in a Mediterranean environment: II. Variability among crops and farmers. *Irrig. Sci.* **23**, 85–92 (2004).
40. Garcia-Vila, M., Lorite, I. J., Soriano, M. A. & Fereres, E. Management trends and responses to water scarcity in an irrigation scheme of Southern Spain. *Agric. Water Manag.* **95**, 458–468 (2008).
41. Kristensen, K., Schelde, K. & Olesen, J. E. Winter wheat yield response to climate variability in Denmark. *J. Agric. Sci.* **149**, 33–47 (2011).
42. Landau, S. et al. Testing winter wheat simulation models' predictions against observed UK grain yields. *Agric. For. Meteorol.* **89**, 85–99 (1998).
43. Knutti, R., Furrer, R., Tebaldi, C., Cermak, J. & Meehl, G. A. Challenges in combining projections from multiple climate models. *J. Clim.* **23**, 2739–2758 (2010).
44. Tebaldi, C. & Knutti, R. The use of the multi-model ensemble in probabilistic climate projections. *Philos. Trans. R. Soc. Lond. Ser. A* **365**, 2053–2075 (2007).
45. Kimball, B. A. et al. Productivity and water use of wheat under free-air CO₂ enrichment. *Glob. Change Biol.* **1**, 429–442 (1995).
46. Fitzgerald, G. J. et al. Elevated atmospheric [CO₂] can dramatically increase wheat yields in semi-arid environments and buffer against heat waves. *Glob. Change Biol.* **22**, 2269–2284 (2016).
47. Manderscheid, R., Erbs, M. & Weigel, H.-J. Interactive effects of free-air CO₂ enrichment and drought stress on maize growth. *Eur. J. Agron.* **52**, 11–21 (2014).
48. Richards, R. A. Physiological traits used in the breeding of new cultivars for water-scarce environments. *Agric. Water Manag.* **80**, 197–211 (2006).
49. Durand, J.-L. et al. How accurately do maize crop models simulate the interactions of atmospheric CO₂ concentration levels with limited water supply on water use and yield? *Eur. J. Agron.* <https://doi.org/10.1016/j.eja.2017.01.002> (2017).
50. Jin, Z., Ainsworth, E. A., Leakey, A. D. & Lobell, D. B. Increasing drought and diminishing benefits of elevated carbon dioxide for soybean yields across the US Midwest. *Glob. Change Biol.* **24**, e522–e533 (2018).
51. Turner, N. C. Agronomic options for improving rainfall-use efficiency of crops in dryland farming systems. *J. Exp. Bot.* **55**, 2413–2425 (2004).
52. Zimmermann, A. et al. Climate change impacts on crop yields, land use and environment in response to crop sowing dates and thermal time requirements. *Agric. Syst.* **157**, 81–92 (2017).
53. Asseng, S. et al. Uncertainty in simulating wheat yields under climate change. *Nat. Clim. Change* **3**, 827–832 (2013).
54. Allen, R. G. & Wright, J. L. Translating wind measurements from weather stations to agricultural crops. *J. Hydrol. Eng.* **2**, 26–35 (1997).
55. Ruane, A. C., Goldberg, R. & Chryssanthacopoulos, J. Climate forcing datasets for agricultural modeling: merged products for gap-filling and historical climate series estimation. *Agric. For. Meteorol.* **200**, 233–248 (2015).
56. Ruane, A. C. & McDermid, S. P. Selection of a representative subset of global climate models that captures the profile of regional changes for integrated climate impacts assessment. *Earth Perspect.* **4**, 1 (2017).
57. Lilley, J. M. & Kirkegaard, J. A. Farming system context drives the value of deep wheat roots in semi-arid environments. *J. Exp. Bot.* **67**, 3665–3681 (2016).
58. Fodor, N., Pásztor, L. & Németh, T. Coupling the 4M crop model with national geo-databases for assessing the effects of climate change on agro-ecological characteristics of Hungary. *Int. J. Digital Earth* **7**, 391–410 (2014).
59. Moriondo, M., Giannakopoulos, C. & Bindl, M. Climate change impact assessment: the role of climate extremes in crop yield simulation. *Clim. Change* **104**, 679–701 (2011).

60. Stöckle, C. O., Donatelli, M. & Nelson, R. CropSyst, a cropping systems simulation model. *Eur. J. Agron.* **18**, 289–307 (2003).
61. Olesen, J. E., Bernsten, J., Hansen, E. M., Petersen, B. M. & Petersen, J. Crop nitrogen demand and canopy area expansion in winter wheat during vegetative growth. *Eur. J. Agron.* **16**, 279–294 (2002).
62. Olesen, J. E. et al. Comparison of methods for simulating effects of nitrogen on green area index and dry matter growth in winter wheat. *Field Crops Res.* **74**, 131–149 (2002).
63. Kersebaum, K. C. Modelling nitrogen dynamics in soil-crop systems with HERMES. *Nutr. Cycl. Agroecosyst.* **77**, 39–52 (2007).
64. Nendel, C. et al. The MONICA model: testing predictability for crop growth, soil moisture and nitrogen dynamics. *Ecol. Model.* **222**, 1614–1625 (2011).
65. Nendel, C. in *Novel Methods for Monitoring and Managing Land and Water Resources in Siberia* (eds Müller, L., Sheudshen, A. K. & Eulenstein, F.) 503–518 (Springer Water, Cham, Switzerland, 2016).
66. Webber, H. et al. Simulating canopy temperature for modelling heat stress in cereals. *Environ. Model. Softw.* **77**, 143–155 (2016).
67. Jamieson, P. D., Semenov, M. A., Brooking, I. R. & Francis, G. S. Sirius: a mechanistic model of wheat response to environmental variation. *Eur. J. Agron.* **8**, 161–179 (1998).
68. Semenov, M. A. & Stratonovitch, P. Adapting wheat ideotypes for climate change: accounting for uncertainties in CMIP5 climate projections. *Clim. Res.* **65**, 123–139 (2015).
69. Stratonovitch, P. & Semenov, M. A. Heat tolerance around flowering in wheat identified as a key trait for increased yield potential in Europe under climate change. *J. Exp. Bot.* **66**, 3599–3609 (2015).
70. Martre, P. et al. Modelling protein content and composition in relation to crop nitrogen dynamics for wheat. *Eur. J. Agron.* **25**, 138–154 (2006).
71. Martre, P. & Dambreville, A. A model of leaf coordination to scale-up leaf expansion from the organ to the canopy. *Plant Physiol.* **176**, 704–716 (2018).
72. Soltani, A., Maddah, V. & Sinclair, T. R. SSM-wheat: a simulation model for wheat development, growth and yield. *Int. J. Plant Prod.* **7**, 711–740 (2013).
73. Lizaso, J. et al. Modeling the response of maize phenology, kernel set, and yield components to heat stress and heat shock with CSM-IXIM. *Field Crops Res.* **214**, 239–252 (2017).
74. Portmann, F. T., Siebert, S. & Döll, P. MIRCA2000—Global monthly irrigated and rainfed crop areas around the year 2000: a new high-resolution data set for agricultural and hydrological modeling. *Glob. Biogeochem. Cycles* **24**, GB1011 (2010).
75. Iizumi, T. et al. Prediction of seasonal climate-induced variations in global food production. *Nat. Clim. Change* **3**, 904–908 (2013).
76. Monod, H., Naud, C. & Makowski, D. in *Working with Dynamic Crop Models* (eds Wallach, D., Makowski, D. & Jones, J.) 55–100 (Elsevier, Amsterdam, 2006).

Acknowledgements

H.W., F.E., and T.G. acknowledge support from the FACCE JPI MACSUR project through the German Federal Ministry of Food and Agriculture (2815ERA01J). Support from the SUSTAg project funded through the German Federal Ministry of Food and Agriculture is acknowledged by H.W., F.E., T.G. (031B0170B) and C.M. (031B0170A). J. E.O. and M.J. were funded by Innovation Fund Denmark (5105-00001B). S.F. received financial support from the Academy of Finland (decision 277276) and the Finnish

Ministry of Agriculture and Forestry (MMM) through FACCE-MACSUR. A.R. was supported by the National Aeronautics and Space Agency Science Mission Directorate (WBS 281945.02.03.06.79). M.Bi., R.F., M.M., and G.T. acknowledge financial support from the JPI FACCE MACSUR2 project, funded by the Italian Ministry for Agricultural, Food, and Forestry Policies (D.M. 24064/7303/15 of 26/Nov/2015). N.F.'s contribution was supported by the Széchenyi 2020 program, the European Regional Development Fund-“Investing in your future” and the Hungarian Government (GINOP-2.3.2-15-2016-00028). M.R.-R. and A.Ro. acknowledge support from MINECO (APCIN2016-0005-00-00). M.A.S. and P.S. received grant-aided support from the BBSRC Designing Future Wheat programme [BB/P016855/1]. We thank RP Rötter for discussions at the onset of the study and climate scenario construction. The contributions of Andreas Enders and Gunther Kraus in facilitating the data transfer and processing are acknowledged and appreciated.

Author contributions

H.W., F.E., J.E.O., and M.A.S. conceived the study. H.W., F.E., J.E.O., and C.M. discussed the analysis. M.Bo. advised on framing the results for [CO₂]. I.J.L. and C.G.-L. evaluated the results under irrigated conditions. H.W., B.A., M.Bi., R.Fe., N.F., M.J., K.-C.K., J.L.L., L.M., M.M., P.M., C.N., A.Ro., M.R.-R., M.A.S., S.S., T.S., P.S., and G.T. conducted the simulations. S.F. and A.Ru. prepared the climate data. H.W., T.G., and S.S. prepared the soil data. M.Bo., P.M., D.W., R.Fi., F.E., and H.W. discussed the statistical analysis. M.Bo. and H.W. performed the statistical analysis. H.W. coordinated the simulations, performed the analysis, and wrote the paper. All authors reviewed the paper.

Additional information

Supplementary Information accompanies this paper at <https://doi.org/10.1038/s41467-018-06525-2>.

Competing interests: The authors declare no competing interests.

Reprints and permission information is available online at <http://npg.nature.com/reprintsandpermissions/>

Publisher's note: Springer Nature remains neutral with regard to jurisdictional claims in published maps and institutional affiliations.



Open Access This article is licensed under a Creative Commons Attribution 4.0 International License, which permits use, sharing, adaptation, distribution and reproduction in any medium or format, as long as you give appropriate credit to the original author(s) and the source, provide a link to the Creative Commons license, and indicate if changes were made. The images or other third party material in this article are included in the article's Creative Commons license, unless indicated otherwise in a credit line to the material. If material is not included in the article's Creative Commons license and your intended use is not permitted by statutory regulation or exceeds the permitted use, you will need to obtain permission directly from the copyright holder. To view a copy of this license, visit <http://creativecommons.org/licenses/by/4.0/>.

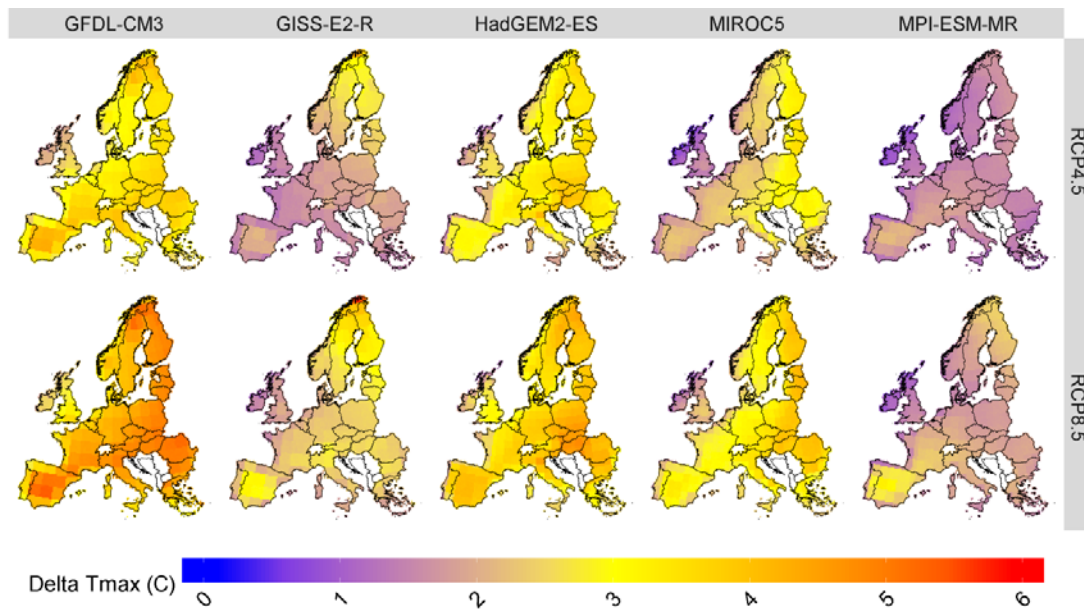
© The Author(s) 2018

Diverging importance of drought stress for maize and winter wheat in Europe

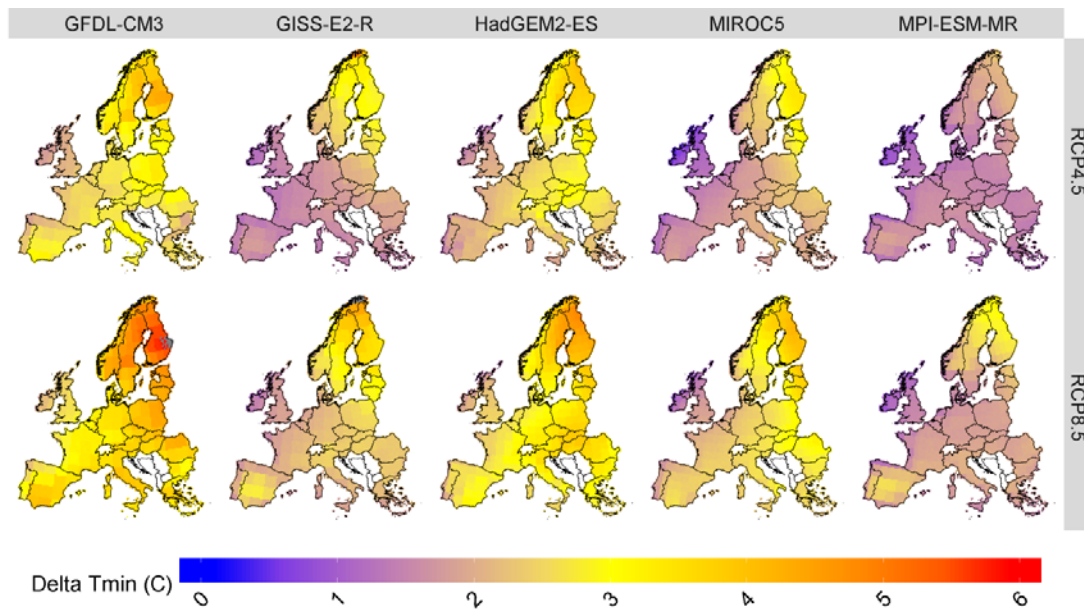
Webber *et al*

Supplemental Information

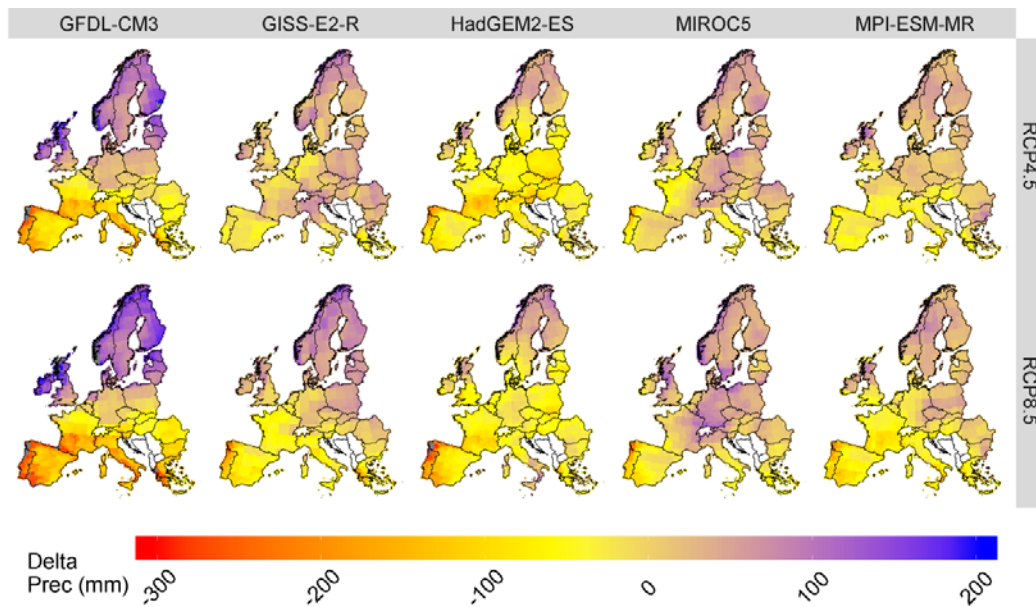
Diverging importance of drought stress for maize and winter wheat in Europe



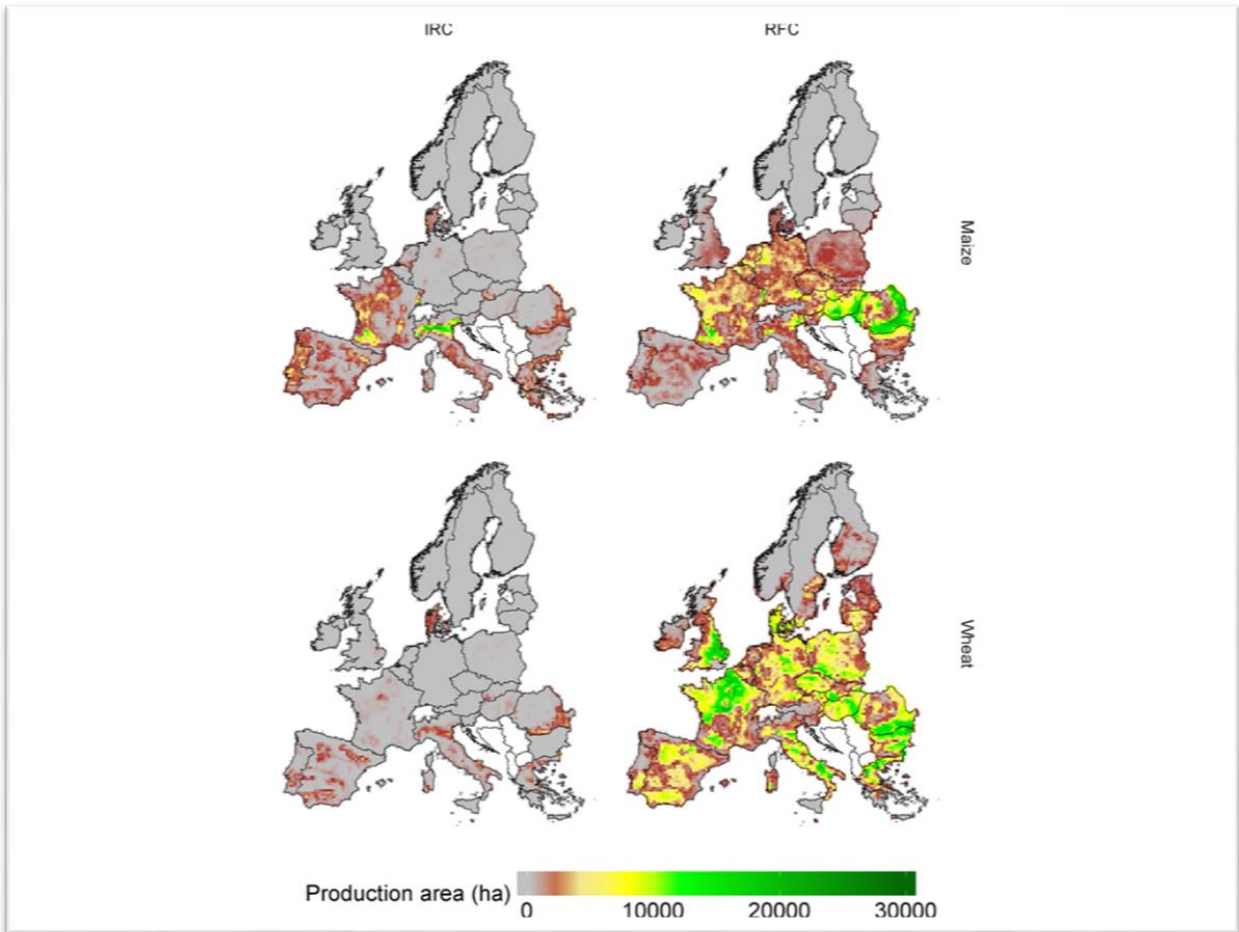
Supplementary Figure 1. Change in daily maximum temperature to 2055. Absolute change in average daily maximum temperature (°C) between the 2055 scenario period (2040-2069) and the baseline period (1980 to 2010) for RCPs 4.5 and 8.5 for five GCMs: GFDL-CM3, GISS-ES-R, HadGEM2-ES, MIROC5 and MPI-ESM-MR.



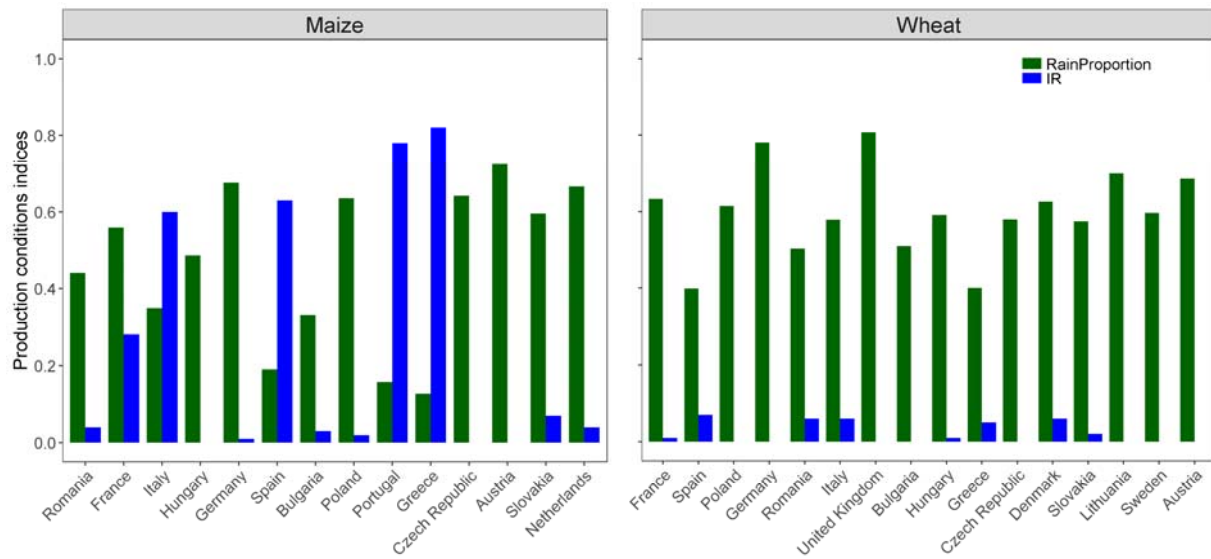
Supplementary Figure 2. Change in daily minimum temperature to 2055. Absolute change in average daily minimum temperature (°C) between the 2055 scenario period (2040-2069) and the baseline period (1980 to 2010) for RCPs 4.5 and 8.5 for five GCMs: GFDL-CM3, GISS-ES-R, HadGEM2-ES, MIROC5 and MPI-ESM-MR.



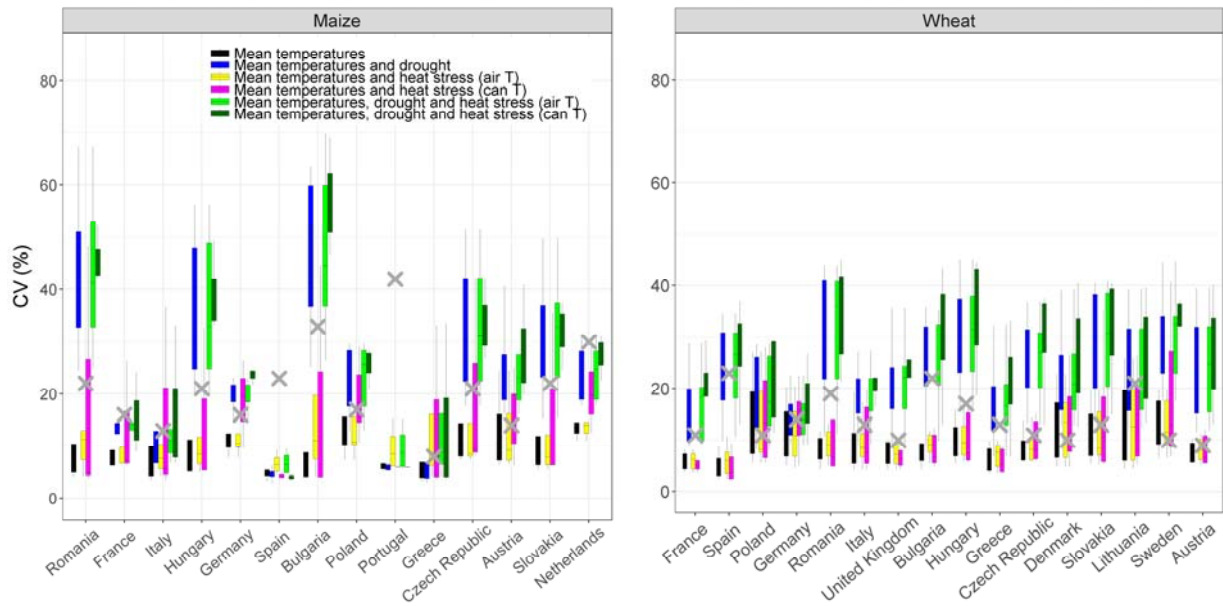
Supplementary Figure 3. Change in annual precipitation sum to 2055. Absolute change in annual precipitation (mm) for RCPs 4.5 and RCP8.5 between the 2055 scenario period (2040-2069) and the baseline period (1980 to 2010) for five GCMs: GFDL-CM3, GISS-ES-R, HadGEM2-ES, MIROC5 and MPI-ESM-MR.



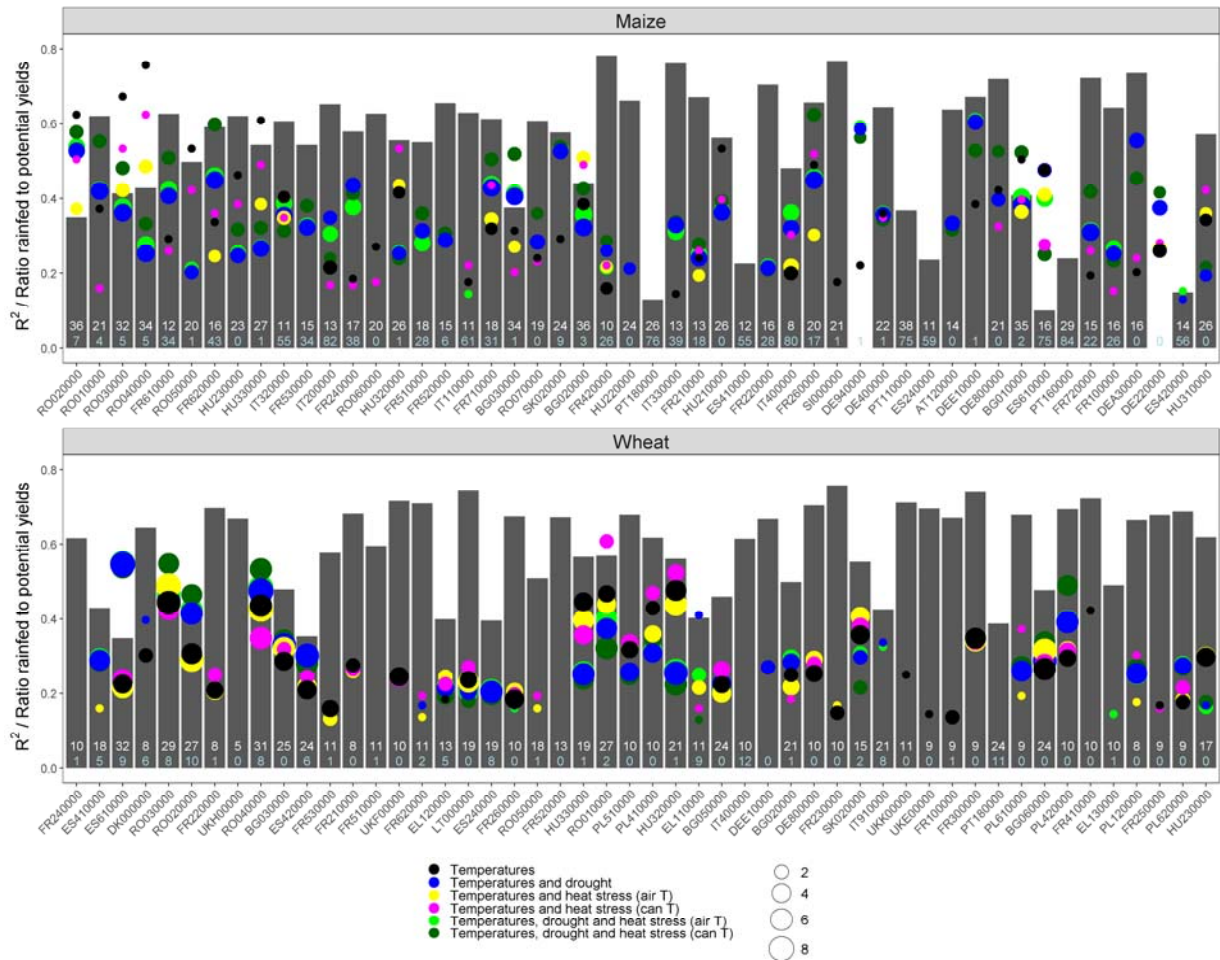
Supplementary Figure 4. The production area (ha) for irrigated (IRC, left column) and rainfed (RFC, right column) maize (top row) and winter wheat (bottom row) from the MIRCA2000 database (https://www.uni-frankfurt.de/45218031/data_download). Areas shaded in grey have no reported production of the respective crop.



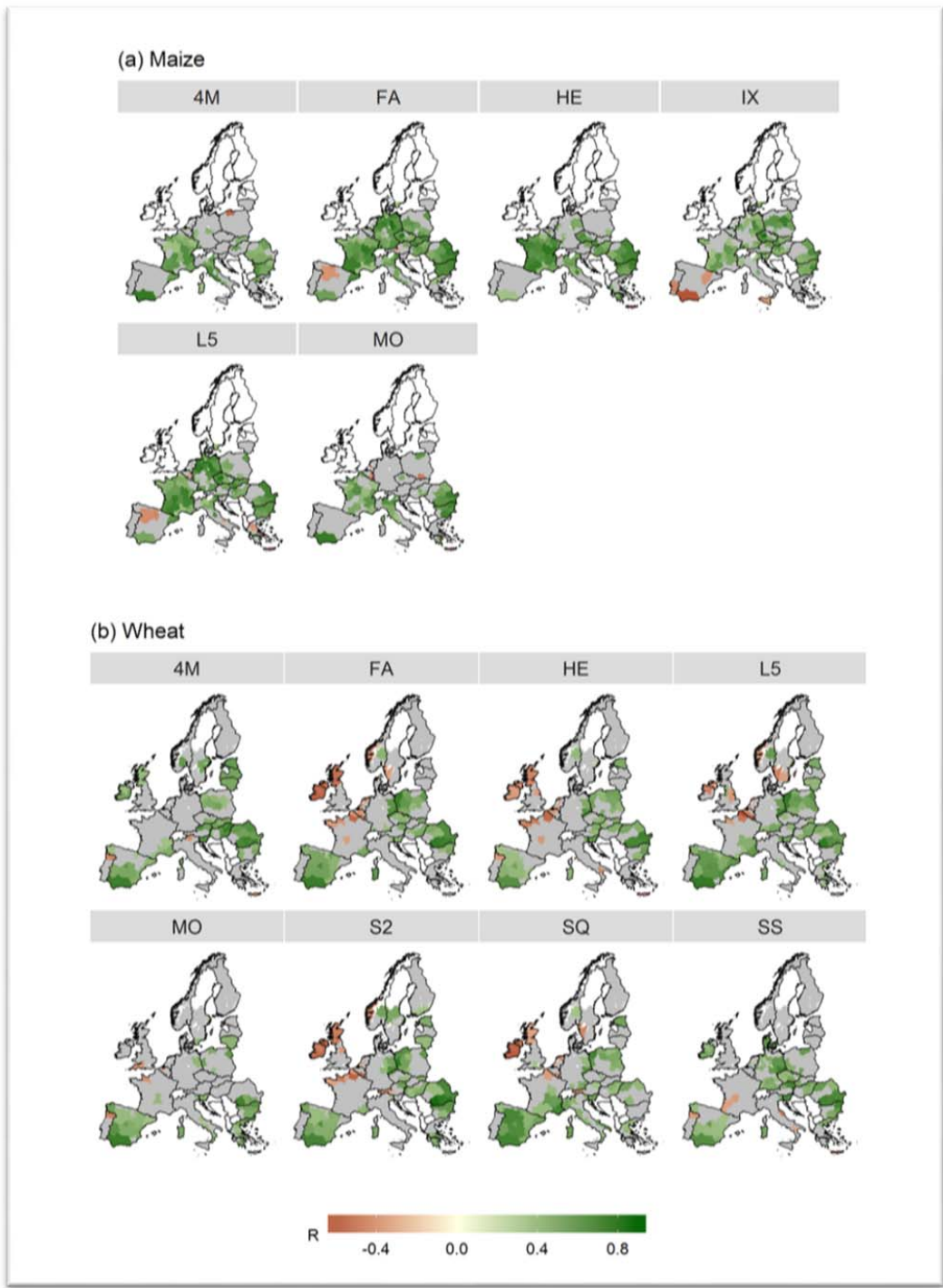
Supplementary Figure 5. National characterization of crop production aridity and prevalence of irrigation. Green bars indicate the model median's average ratio of rainfed to irrigated yields at the country level for the period 1980 to 2010. Blue bars indicate the percentage of crop land under irrigation in each country (IR).



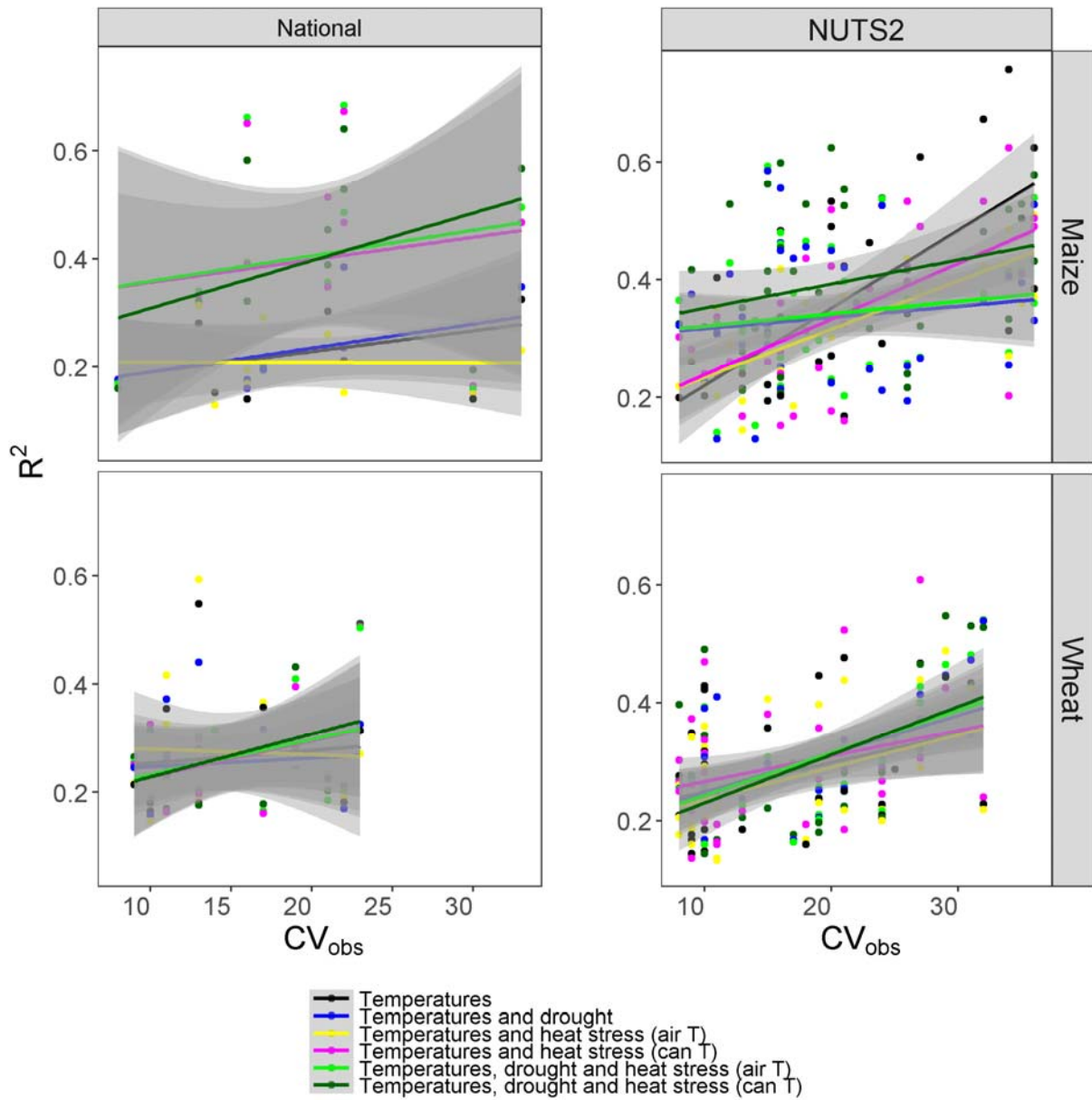
Supplementary Figure 6. The coefficient of variation (CV) of national yields. CV was calculated between 1984 and 2009 are shown for the FAO-stat observations (grey x symbol) and with the boxplots for the six simulation sets (black- optimal temperature effects only, blue – mean temperature and drought effects, yellow – mean temperature and high air-temperature effects, magenta - mean temperature and high canopy-temperature effects, light green - mean temperature, drought and high air-temperature effects, and dark green - mean temperature, drought and high canopy-temperature effects). The boxplots indicate the uncertainty the crop model ensemble. Countries are listed if they contain more than 1% of the European production area for that crop and are listed from largest area to smallest. For each crop, countries are ordered by production area in descending order.



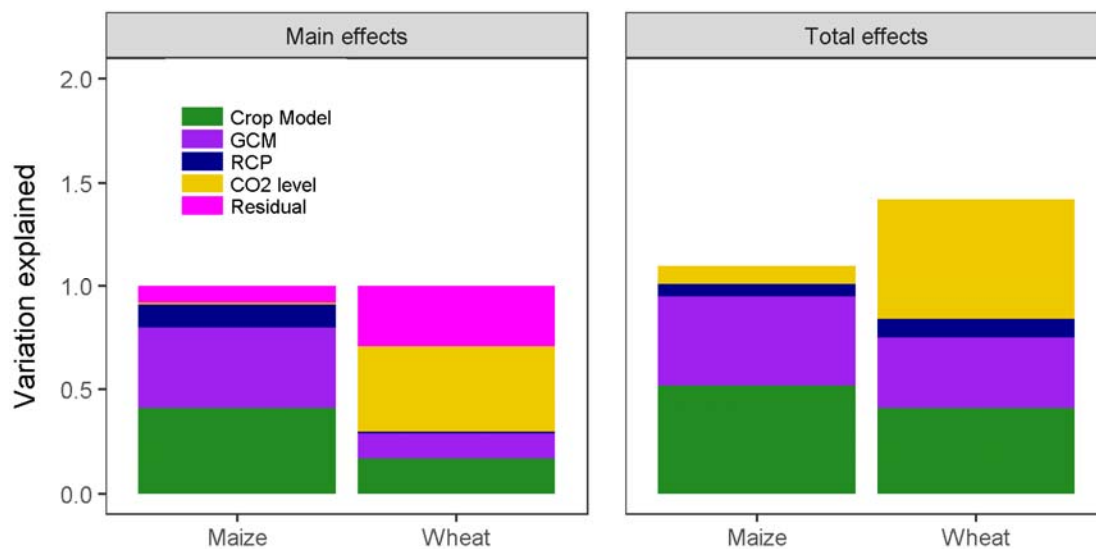
Supplementary Figure 7. Model skill and explained variation at NUTS2 level for grain maize and winter wheat. The coefficient of determination (R^2) between observed yields as reported in CAPRI database for the period between 1984 and 2009 and the six simulation sets (black - mean temperature effects only, blue – mean temperature and drought effects, yellow – mean temperature and heat stress with air-temperature effects, magenta - mean temperature and heat stress with canopy-temperature effects, light green - mean temperature, water-limitation and heat stress with air-temperature effects, and dark green - mean temperature, drought and heat stress with canopy-temperature effects). Each point represents the mean of the correlation coefficient for the eight winter wheat models and six maize models and the size of the dot indicates the number of models that had significant correlations for that simulation set and were considered in the respective mean. Grey columns serve as an environmental index indicating the model median average of rainfed to potential yields for each country. NUTS2 for the 50 NUTS2 with the largest production area are ordered by production area in descending order. Numbers in white at the base of the grey bars indicate the coefficient of variation in the observations. Numbers in light blue at the base of the grey bars indicate the ratio of irrigated to total maize production in the NUTS2 zone.



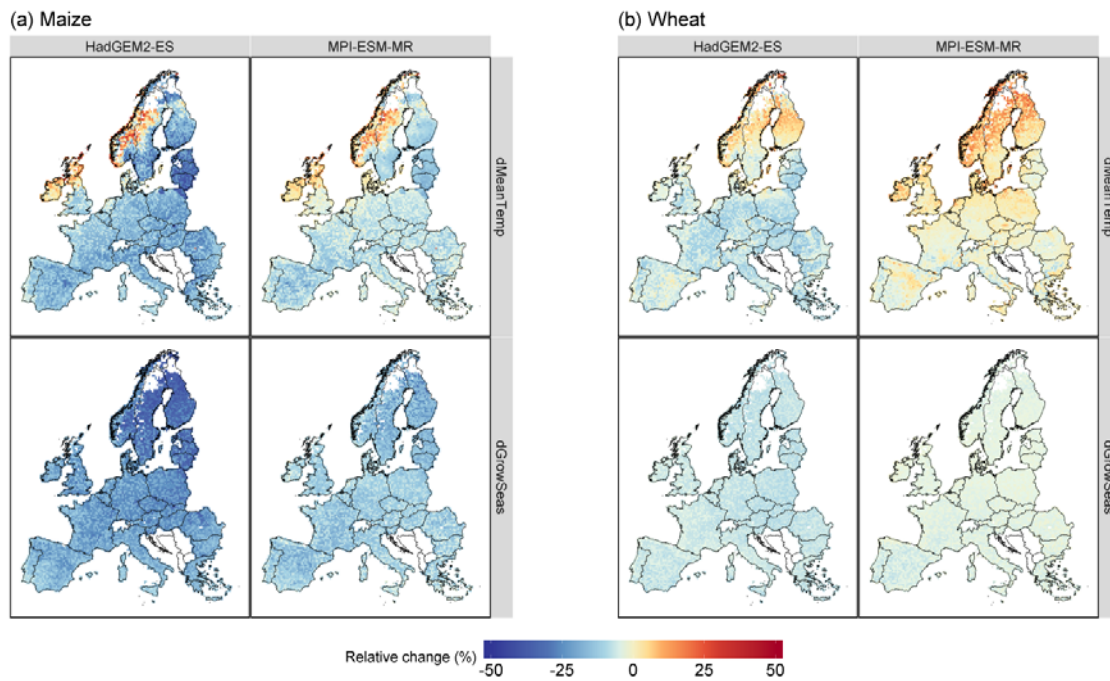
Supplementary Figure 8. The correlation coefficient (R) between observed yields as reported at the NUTS2 sub-national administrative level for the period between 1986 and 2009 for the simulations (see Table S1 for names and details for each model) considering mean temperature, drought, and high air-temperature effects for (a) grain maize and (b) winter wheat



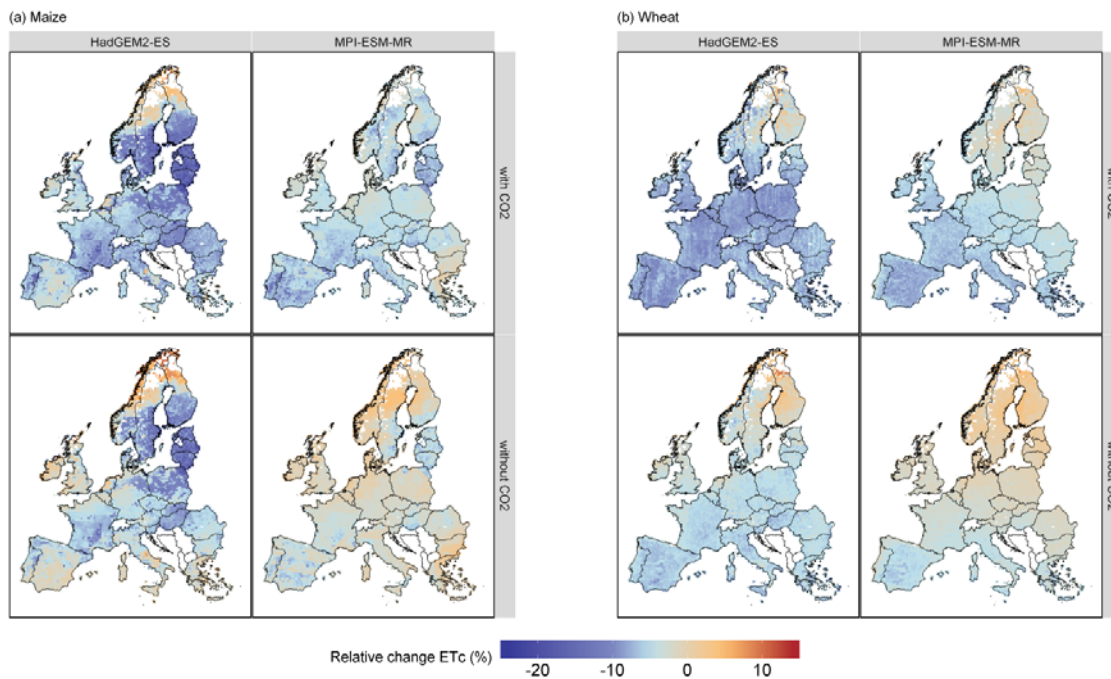
Supplementary Figure 9. Model skill and coefficient of variation of the observations (CV). The relationship between model skill expressed as coefficient of determination (R^2) between observed yields and simulations and the coefficient of variation (CV) in the observed yield data at the national and NUTS2 level for grain maize and winter wheat. Analysis at the national level was for the period between 1981 and 2009 while analysis at the subnational NUTS2 level was for the period 1986 to 2009 for six simulation sets (black- mean temperature effects only, blue – mean temperature and drought effects, yellow – mean temperature and high air-temperature effects, magenta - mean temperature and high canopy-temperature effects, green - mean temperature, drought and high air-temperature effects, and dark green - mean temperature, drought and high canopy-temperature effects) over all models.



Supplementary Figure 10. Main (first order) and total effects sensitivity indices of different sources of variation in the simulations of EU aggregate crop yields for current maize and wheat production areas to 2050. Sources of variation include: crop model (green), generalized circulation model (purple), representative concentration pathway (RCP, blue), [CO₂] level (gold) with the residual variation for the first order indices indicated by magenta.



Supplementary Figure 11. Relationship between of yield change due to mean temperature effects (*dMeanTemp*, top row) and the change in the length of the growing season (*dGrowSeas*, bottom row) for two general circulation models, *HadGEM2-ES* (first column in each panel) and *MPI-ESM-MR* (second column in each panel) to the period 2040 to 2069 relative to the baseline (1980 to 2010) for RCP4.5 for (a) grain maize and (b) winter wheat.



Supplementary Figure 12. Relative change in growing season crop water use (ET_c) for the period 2040 - 2069 relative to the baseline (1981 - 2010) for RCP 4.5 for current varieties and management of (a) grain maize and (b) winter wheat. In each panel, simulations are shown with (top row) and without (bottom row) the effects of elevated [CO₂]. Results are shown for two generalized circulation models (GCMs) in each panel, HadGEM2-ES (first column) and MPI-ESM-RM (second column).

Supplementary Table 1. Description of the crop models and their consideration of CO₂ and water limitation effects.

MODEL	CROP	Effects of increasing [CO ₂]			Water		
		Temperature	Transpiration	RUE	ET Method	Water stress	Evaporation/Transpiration distribution
FASSET (FA)	MZ, WW	Elevated CO ₂ affects transpiration, which in turn affects daily maximum canopy temperature ¹	An empirical function reduces transpiration with elevated CO ₂ ²	An empirical function increases RUE with elevated CO ₂ differentially for C3 and C4 crops ²	Modified Makkink method ³	Soil water stress is calculated as the ratio of actual to potential transpiration. The dry matter growth is proportional to this ratio. In addition, leaf senescence is enhanced when this ratio is lower than 1 ⁴	Potential ET is divided between crop and soil simulated LAI ⁴
SIMPLACE (L5)	MZ, WW	Elevated CO ₂ reduces stomatal conductance in non-water limited conditions which reduces canopy cooling for any given level of transpiration which results in higher canopy temperature (T _c) ¹	An empirical function reduces potential transpiration rates with elevated CO ₂ differentially for C3 and C4 crops ⁵	An empirical function increases RUE with elevated CO ₂ differentially for C3 and C4 crops ⁵	FAO-56 Penman-Monteith ⁶	Soil water stress calculated as ratio of actual to potential transpiration. Used to reduce rates of biomass accumulation and leaf area expansion. Also increase partitioning of biomass to roots. Used in calculation of T _c between the upper (no transpiration) and lower (full transpiration) limit of T _c . The rate of transpiration also influences the energy balance of each limit as well as the stability correction terms.	Dual crop coefficient approach of FAO-56 ⁶
HERMES (HE)	MZ, WW	When canopy temperature is used the reduced transpiration under elevated CO ₂ increase canopy temperature relative to the approach with air temperature	Standard stomata resistance in FAO-56 is replaced by a dynamic value derived by a function suggested by Yu et al. ⁷ depending on daily gross assimilation, CO ₂ and vapor pressure deficit.	CO ₂ effect on photosynthesis (P-R approach) is considered by a non-linear function according to Hoffmann ⁸ for C3, no effect for C4. Details are given in Kersebaum & Nendel ⁹	FAO-56 Penman-Monteith ⁶	Soil water stress calculated as ratio of actual to potential transpiration. Acceleration of crop development due to water stress. Reduced transpiration increase T _c .	One crop coefficient approach of FAO-56 ⁶
MONICA (MO)	MZ, WW	None	Crop stomata resistance in FAO-56 model is calculated according to Yu et al. ⁷ depending on CO ₂	For photosynthesis of C3 crops, the dependency of maximum photosynthesis	FAO-56 Penman-Monteith ⁶ on the basis of crop LAI and	Drought stress of the crop is indicated by the relation of actual to potential transpiration, a reduction factor that acts directly on gross CO ₂ assimilation if crop-	Ground coverage determines to what extent transpiration contributes to total evapotranspiration

			concentration, daily gross assimilation, and vapor pressure deficit.	rate and light use efficiency to CO ₂ are described by non-linear functions proposed by Mitchell et al. ¹⁰ CO ₂ effects are not simulated for C4 crops	height, where potential ET is calculated from reference ET and developmental stage-specific Kc factors, minus interception storage	specific thresholds are exceeded.	
4M (4M)	MZ, WW	N/A	An empirical function reduces potential transpiration rates with elevated CO ₂ differentially for C3 and C4 crops	An empirical function increases RUE with elevated CO ₂ differentially for C3 and C4 crops	Priestley-Taylor method ¹¹	Soil water stress calculated as ratio of actual to potential transpiration. Used to (1) reduce rates of biomass accumulation, (2) accelerate leaf senescence	Potential E and T are partitioned based on simulated LAI. Suleiman and Ritchie ¹² method for actual E based on upward flux calculations from all soil layers.
SSM (SS)	WW	Elevated CO ₂ affects transpiration, thus canopy temperature through affecting the energy balance	An empirical function increases transpiration efficiency with elevated CO ₂ ¹³	An empirical functions increases RUE with elevated CO ₂ ¹³	Priestley-Taylor method ¹¹ as modified and described by Ritchie ¹⁴	Water deficit hastens phenological development, reduces leaf expansion rate, and biomass accumulation ¹⁵ . A certain number of consecutive flooding days (20 d) results in crop death ¹⁵	Soil evaporation using a two-stage evaporation model ¹⁶ . Daily transpiration rate is calculated using transpiration efficiency coefficient and vapor pressure deficit ¹⁶
SiriusQuality version 3 (SQ)	WW	None	None	An empirical function increases RUE with elevated CO ₂ ¹⁷	Penman ¹⁸	Soil water deficit calculated using a moisture deficit choking function. Used to reduce leaf expansion rate, biomass accumulation, transpiration, and accelerate leaf senescence ¹⁹	Soil evaporation calculated using Ritchie approach ^{18,20,21}
SIRIUS 2015 (S2)	WW	none	none	Increase of RUE with elevated CO ₂ ¹⁷	Penman ¹⁸ , but if wind and/or VP are not available, use Priestley-Taylor	Water stress reduces leaf expansion rate, biomass accumulation, transpiration, and accelerate leaf senescence	Soil evaporation calculated using Ritchie approach ^{14,18}
DSSAT_IX (IX)	MZ	None	Calculates a relative transpiration rate between current and elevated CO ₂ conditions, affecting the leaf stomatal resistance and canopy resistance	Empirical C4 function increases potential growth rate, calculated from hourly leaf assimilation and daily canopy respiration, with elevated CO ₂	FAO-56 Penman-Monteith ⁶	Two water stresses based on the ratio of actual to potential T. The most limiting reduces expansion processes. The less limiting reduces growth processes.	Potential E and T are partitioned based on simulated LAI. Suleiman and Ritchie ¹² method for actual E based on upflux calculations from all soil layers.

Supplementary Table 2. Description of the crop models and their approaches to simulating heat stress, canopy temperature and phenology.

MODEL	CROP	Heat stress response	Canopy temperature	Phenology approach	Temperature sensitivity of processes (not included as heat stress)
FASSET (FA)	MZ, WW	Heat stress affects leaf senescence enhancing leaf senescence rate when daily maximum temperature (T_c) exceeds a threshold of 30 C ²²	Based on an empirical relationship between midday crop temperature, evapotranspiration and net radiation ²³ . Maximum and minimum T_c are calculated on a daily time step	Thermal time for maize and wheat with no heat stress effects. Wheat in addition considered photoperiod.	Phenology, leaf area expansion and leaf senescence, RUE
SIMPLACE (L5)	MZ, WW	The module reduces yield (Y) as a function of the hourly stress thermal time (TThs, in °Ch) accumulated above a critical high temperature threshold (T_{crit}), being 31 or 34°C (wheat or maize) This module is applied during the critical period for kernel number determination ²⁴	T_c is calculated from an hourly energy balance by summing incident solar radiation, soil, latent and sensible (H) heat fluxes and solving T_c from H . Atmospheric stability is considered by using Monin-Obukhov Similarity Theory (MOST) and empirical stability correction factors to solve for r_a . T_c is calculated for two bounding extremes: upper (no transpiration) and lower (full transpiration) limits of T_c , avoiding the need to specify canopy resistance terms at intermediate transpiration rates. With these two extreme potential values of T_c , actual $T_c = T_{c,L} + (1 - K_{ws})(T_{c,U} - T_{c,L})$ where K_{ws} is soil water stress index. A full description is given by Webber et al ²⁵	Thermal time for maize and wheat with no heat stress effects, Wheat additionally considers photoperiod and vernalization	phenology, leaf area expansion in juvenile phase (before driven by biomass accumulation and specific leaf area), RUE and evapotranspiration
HERMES (HE)	MZ, WW	Approach acc. to MONICA: Daily temperatures above a threshold during 10 days from flowering create a descending stress factor which is accumulated during the 10 days. The final factor is applied to biomass increase of grains during the rest of the season.	T_c is calculated from an hourly energy balance by summing incident solar radiation, latent and sensible (H) heat fluxes and solving T_c from H . Hourly temperature and radiation values are determined following Hoogenboom & Huck ²⁶ . The sensible heat flux is given by: $H = (\rho c_p (T_c - T_a)) / r_a$, where ρ is air density, c_p the specific heat of air, T_a is air temperature and r_a is the aerodynamic resistance which is calculated according to Thom and Oliver ²⁷ as $r_a = [4.72 \ln((z - d + z_0)/z_0)]^2 / (1 + 0.54u)$ where u is wind speed at reference height z , d the zero-displacement height equal 1.04h0.88 and z_0 the roughness length for momentum and heat transfer each equal to $z_0 = 0.062h1.08$, where h is the crop height.	Thermal time for maize and wheat with no heat stress effects, Wheat additionally considers photoperiod and vernalization	Specific temperature functions for C3 and C4 crops for gross photosynthesis, and temperature dependent respiration. Net assimilation (P-R) is strongly affected by temperature.
MONICA (MO)	MZ, WW	A sensitive phase for heat stress is defined around flowering. In this period, temperatures above 31°C for wheat or 35°C for maize determine a linear increment of	None	Thermal time for maize and wheat. Water stress after flowering accelerates development. Wheat additionally considers	Phenology, photosynthesis and respiration, evapotranspiration, root growth, soil organic matter turnover, soil nitrogen processes

		a stress factor ²⁸ applied to the fraction of opened flowers ²⁹ . The cumulative stress factor reduces the partitioning of assimilates to the grains.		photoperiod and vernalization	
4M (4M)	MZ, WW	Incomplete pollination as a function of Tmax. Number of kernels available for grain filling is reduced above 30 °C (wheat) and 35 °C (maize) in the flowering stage	N/A	Thermal time for maize and wheat with no heat stress effects, Wheat additionally considers photoperiod and vernalization	Phenology, photosynthesis and respiration, evapotranspiration, leaf senescence, soil nitrogen processes
SSM (SS)	WW	Maximum daily temperatures above a threshold value (30°C) reduce leaf expansion and accelerate leaf senescence. The daily seed growth rate is progressively reduced by temperatures higher than 31°C and is null when temperature is greater than 40°C	T_c is calculated from a daily energy balance assuming neutral atmospheric stability (Jamieson <i>et al.</i> , 1995).	Phenological development is calculated based on the biological day concept. A biological day is a day with optimal temperature, photoperiod and moisture conditions for plant development ¹⁵	Phenology (including leaf appearance rate and vernalization), leaf area expansion, radiation use efficiency, evapotranspiration ¹⁵
SIRIUS QUALITY (SQ)	WW	Leaf senescence increases linearly above a threshold value (31°C) of maximum daily T_c ³⁰	T_c is calculated from a daily energy balance assuming neutral atmospheric stability ¹⁸	Flowering time is calculated from the final number response to temperature and daylength ^{31,32}	Phenology (leaf appearance rate and vernalization), leaf expansion, biomass accumulation, biomass and nitrogen remobilization, evapotranspiration, soil nitrogen mineralization ³³
SIRIUS 2000 (S2)	WW	Decrease in grain number and grain size, accelerated leaf senescence during grain filling ³⁴	T_c is calculated from a daily energy balance assuming neutral atmospheric stability ¹⁸	Anthesis is calculated from the final leaf number as a function of temperature and daylength ³¹	Phenology, leaf expansion and senescence, RUE, biomass accumulation, biomass and nitrogen remobilization, evapotranspiration, soil nitrogen mineralization
DSSAT_IX (IX)	MZ	Cohorts of plants reaching anthesis and shedding pollen and cohorts of plants exposing silks separated by ASI days. Hourly temperatures extrapolated from Tmax and Tmin are scanned and compared against a critical Tc (35 °C) and a sterilizing Ts (41 °C). Number of hours above Tc and Ts reduce daily the number of exposed silks and the potential kernel set ³⁵	Not considered	Thermal time calculated with the simplified beta function ³⁶ parametrized for vegetative and reproductive phases	Temperature functions affecting leaf assimilation, canopy respiration, leaf expansion, and grain growth rate

Supplementary Table 3: Significance of main treatment effects and interactions from statistical analyses of relative change to 2050 in European yield levels aggregated by current areas for rainfed and irrigated production. Results are shown for each of the: three-way fixed effects ANOVA on means (3-fixed-ANOVA), three-way mixed model ANOVA on means (3-mixed-ANOVA), three-way mixed model ANOVA on means with crop model and GCM as random factors (3-mixed-ANOVA-rModGCM), three-way mixed model ANOVA on means with GCM nested in crop model as random factors (3-mixed-ANOVA-rModNestGCM) and two-way fixed test on median (2-way-median).

Effect	3-fixed-ANOVA	3-mixed-ANOVA	3-mixed-ANOVA-rModGCM	3-mixed-ANOVA-rModNestGCM	2-way-median
Crop	***	***	***	***	***
CO ₂	***	***	***	***	***
Scenario	**	**	***	***	NA
Crop x CO ₂	***	***	***	***	**
Crop x Scenario	*	**	***	***	NA
CO ₂ x Scenario	*	*	***	***	NA
Crop x CO ₂ x Scenario	ns	ns	ns	ns	NA

* Indicates significant at p<0.05
 ** Indicates significant at p< 0.01
 *** Indicates significant at p<0.001
 ns indicates non-significant
 NA not tested

Supplementary Table 4: Significance of main treatment effects and interactions from statistical analyses on relative yield losses due to drought to 2050 in European yield levels aggregated by current areas for rainfed production. Results are shown for each of the: three-way fixed effects ANOVA on means (3-fixed-ANOVA), three-way mixed model ANOVA on means (3-mixed-ANOVA), three-way mixed model ANOVA on means with crop model and GCM as random factors (3-mixed-ANOVA-rModGCM), three-way mixed model ANOVA on means with GCM nested in crop model as random factors (3-mixed-ANOVA-rModNestGCM) and two-way fixed test on median (2-way-median).

Effect	3-fixed-ANOVA	3-mixed-ANOVA	3-mixed-ANOVA-rModGCM	3-mixed-ANOVA-rModNestGCM	2-way-median
Crop	***	***	***	***	***
CO ₂	*	*	***	***	*
Scenario	ns	ns	**	**	NA
Crop x CO ₂	ns	ns	**	**	ns
Crop x Scenario	ns	ns	ns	*	NA
CO ₂ x Scenario	ns	ns	ns	ns	NA
Crop x CO ₂ x Scenario	ns	ns	ns	ns	NA

* Indicates significant at p<0.05
 ** Indicates significant at p< 0.01
 *** Indicates significant at p<0.001
 ns indicates non-significant
 NA not tested

Supplementary Table 5: Significance of main treatment effects and interactions from statistical analyses on relative yield losses due to heat to 2050 in European yield levels aggregated by current areas for rainfed production. Results are shown for each of the three-way fixed effects ANOVA on means (3-fixed-ANOVA), and two-way fixed test on median (2-way-median).

Effect	3-fixed-ANOVA	2-way-median
Crop	**	ns
CO ₂	ns	ns
Scenario	ns	NA
Crop x CO ₂	ns	ns
Crop x Scenario	ns	NA
CO ₂ x Scenario	ns	NA
Crop x CO ₂ x Scenario	ns	NA

* Indicates significant at p<0.05
 ** Indicates significant at p< 0.01
 *** Indicates significant at p<0.001
 ns indicates non-significant
 NA not tested

Supplementary Table 6: Significance of main treatment effects and interactions from statistical analyses on absolute increase in low-yielding years as compared to average conditions in yield losses due to different drivers (mean temperature effects, drought or heat stress effects) to 2050 in European yields aggregated by current areas for rainfed production. Results are shown for each of the: three-way fixed effects ANOVA on means (3-fixed-ANOVA), three-way mixed model ANOVA on means (3-mixed-ANOVA), three-way mixed model ANOVA on means with crop model and GCM as random factors (3-mixed-ANOVA-rModGCM), three-way mixed model ANOVA on means with GCM nested in crop model as random factors (3-mixed-ANOVA-rModNestGCM) and two-way fixed test on median (2-way-median Crop x CO₂).

Effect	3-fixed-ANOVA	3-mixed-ANOVA	3-mixed-ANOVA-rModGCM	3-mixed-ANOVA-rModNestGCM	2-way-median (Crop x CO ₂)
Driver	***	***	***	***	NA
Crop	***	***	***	***	*
CO ₂	ns	ns	ns	ns	ns
Scenario	ns	ns	ns	ns	NA
Driver x Crop	***	***	***	***	NA
Driver x CO ₂	ns	ns	ns	ns	NA
Driver x Scenario	ns	ns	ns	ns	NA
Crop x CO ₂	ns	ns	ns	ns	ns
Crop x Scenario	ns	ns	ns	ns	NA
CO ₂ x Scenario	ns	ns	ns	ns	NA
Driver x Crop x CO ₂	ns	ns	ns	ns	NA
Driver x Crop x Scenario	ns	ns	ns	ns	NA
Driver x CO ₂ x Scenario	ns	ns	ns	ns	NA
Crop x CO ₂ x Scenario	ns	ns	ns	ns	NA
Driver x Crop x CO ₂ x Scenario	ns	ns	ns	ns	NA

* Indicates significant at p<0.05
 ** Indicates significant at p< 0.01
 *** Indicates significant at p<0.001
 ns indicates non-significant
 NA not tested

Supplementary Methods

The details of the modelling protocol followed to generate the simulation results are detailed below:

1. Data access

Access to all input data is available by emailing Heidi Webber at: Heidi.webber@mail.mcgill.ca (permanent address)

2. Study extent

The study is conducted over the EU-27 for the 8157 grid cells with all data inputs have been prepared for use with these grids. The final selection of grid cells for simulation in this study is less than the total number of climate grids (8709). The extent of the current study is based on selecting climate grids in which there was current agricultural land use (2006 Corine Land Use Map v17) and aggregate soil depth of at least 40 cm

3. Climate data description

All climate data (all periods, and RCM_RCP combinations) for a simulation grid (total of 8709) are contained in a single file (name indicates the grid, row_col), compressed with gzip. To avoid issues with leap years, all scenario climate data use dates from the 1980 - 2010 period. To distinguish the time periods from one another, please use the field "period" (0 = 1980-2010; 2 = 2040-2069; 3 = 2070-2099)

4. Soil data and initial soil moisture data

Soil data, including the assumed initial soil moisture, for all simulation grids are saved in a single csv file. Please consider a maximum root depth as 1.5 m (both wheat and maize) or the depth of soil, if less than 1.5 m.

5. Phenology observations

Observed sowing dates, anthesis dates and harvest/maturity dates for all simulation grids are saved in a one csv file for each of maize and winter wheat. The original observations for sowing, anthesis and harvest for winter wheat and maize were taken from Eurostat (<http://ec.europa.eu/eurostat/web/main>). Across Europe, approx. 220000 observations for the period 1928-2006 were aggregated to 13 environmental zones (FIRST_ENZ field in the shapefile)³⁷. The values in the environmental zones were further disaggregated and assigned to the grid cells.

Starting simulations and re-initialization

ASimulations are started on the day of (or 1 day before, if required) the reported mean sowing day for each grid, reinitializing each year, for all simulation periods and scenarios

6. Calibration

Only observed anthesis and harvest dates are be calibrated. Using the historical climate data (period = 0) and the phenology observations, for each grid cell, crop thermal times (and associated vernalization and photoperiod parameters) are selected to match (averaged over the 1980-2010 period) observed and simulated anthesis and maturity dates. The calibrated thermal times (and other phenology parameters) are used for all scenario simulations.

7. Simulation steps

For each grid (8157), simulations are performed for both crops (grain maize= "Maize" and winter wheat= "WW"), six simulation treatments as indicated below, for each of the 48 gcm_rcp-period-CO2 combinations defined below. Model that do not simulate canopy temperature, do not simulate treatments T3 or T6.

Simulation treatments with respective codes for TrtNo, Irrigation status and Production case to be used for reporting results

TrtNo	Irrigation status (code)	Production case (code)	How to accomplish
T1	Full	Potential (Pot)	switch off heat stress (ie, set threshold temperature at 70°C)
T2	Full	Heat-limited with air temperature (HL_air)	use air temperature as input to heat stress routines, but keep all other processes (RUE, dev rate, photosynthesis) using regular temperature inputs
T3	Full	Heat-limited with canopy temperature (HL_can)	use canopy temperature as input to heat stress routines, but keep all other processes (RUE, dev rate, photosynthesis) using regular temperature inputs
T4	Rain	Water limited with no heat stress (WL)	switch off heat stress (ie, set threshold temperature at 70°C)
T5	Rain	Water-heat-limited with air temperature (WHL_air)	use air temperature as input to heat stress routines, but keep all other processes (RUE, dev rate, photosynthesis) using regular temperature inputs
T6	Rain	Water - heat- limited with canopy temperature (WHL_can)	use canopy temperature as input to heat stress routines, but keep all other processes (RUE, dev rate, photosynthesis) using regular temperature inputs

Unique identifiers for the 48 period * gcm_rcp * CO₂ levels for which simulations are conducted

ClimPerCO2_ID	period	gcm_rcp	CO2
C1	0	0_0	360
C2	2	GFDL-CM3_45	360
C3	3	GFDL-CM3_45	360
C4	2	GFDL-CM3_85	360
C5	3	GFDL-CM3_85	360
C6	2	GISS-E2-R_45	360
C7	3	GISS-E2-R_45	360
C8	2	GISS-E2-R_85	360
C9	3	GISS-E2-R_85	360
C10	2	HadGEM2-ES_26	360
C11	3	HadGEM2-ES_26	360
C12	2	HadGEM2-ES_45	360
C13	3	HadGEM2-ES_45	360
C14	2	HadGEM2-ES_85	360
C15	3	HadGEM2-ES_85	360
C16	2	MIROC5_45	360
C17	3	MIROC5_45	360
C18	2	MIROC5_85	360
C19	3	MIROC5_85	360
C20	2	MPI-ESM-MR_26	360
C21	3	MPI-ESM-MR_26	360
C22	2	MPI-ESM-MR_45	360
C23	3	MPI-ESM-MR_45	360
C24	2	MPI-ESM-MR_85	360
C25	3	MPI-ESM-MR_85	360
C26	2	GFDL-CM3_45	499
C27	3	GFDL-CM3_45	532
C28	2	GFDL-CM3_85	571
C29	3	GFDL-CM3_85	801
C30	2	GISS-E2-R_45	499
C31	3	GISS-E2-R_45	532
C32	2	GISS-E2-R_85	571
C33	3	GISS-E2-R_85	801
C34	2	HadGEM2-ES_26	442
C35	3	HadGEM2-ES_26	429
C36	2	HadGEM2-ES_45	499
C37	3	HadGEM2-ES_45	532
C38	2	HadGEM2-ES_85	571
C39	3	HadGEM2-ES_85	801
C40	2	MIROC5_45	499
C41	3	MIROC5_45	532
C42	2	MIROC5_85	571
C43	3	MIROC5_85	801
C44	2	MPI-ESM-MR_26	442
C45	3	MPI-ESM-MR_26	429
C46	2	MPI-ESM-MR_45	499
C47	3	MPI-ESM-MR_45	532
C48	2	MPI-ESM-MR_85	571
C49	3	MPI-ESM-MR_85	801

8. Prepare outputs

One output file per simulation grid, for a total of 8157 output files. All period by gcm_rcp by CO₂ levels, treatments and crops for a grid cell will be in the same file.

Each output file has: 2 crops (Maize or WW); 49 climate by period by CO₂ combinations (ClimPerCO₂_ID); 6 treatments (TrtNo) and 30 years (harvest year, ie 1981 to 2010, do not output 1980 for maize), for a total of 17 640 lines of output data (excluding header) for each of the 8157 files

with any missing values reported as “na”

9. Naming, saving and sending your outputs (8157 compressed files)

Each output file is named as: “EU_HS_Your2digitModelCode_row_col.csv.gz (e.g. for the STICS model, on grid 54_119 would result in a file: EU_HS_ST_54_119.txt)

The 2-digit code for each model is listed below.

...

2-digit model for naming files and output folders

Model (code)	Model 2-letter code
HERMES	HE
Simplace<Lintul5, Slim3, FAO-56 ET0>	L5
Nwheat	AN
SiriusQuality	SQ
MONICA	MO
Sirius2014	S2
FASSET	FA
4M	4M
SSM	SS
DSSAT-CSM Ixim & DSSAT CERES (control)	IX

References

- 1 Webber, H. *et al.* Physical robustness of canopy temperature models for crop heat stress simulation across environments and production conditions. *Field Crops Research* **216**, 75 - 88 (2018).
- 2 Doltra, J., Lægdsmand, M. & Olesen, J. E. Impacts of projected climate change on productivity and nitrogen leaching of crop rotations in arable and pig farming systems in Denmark. *The Journal of Agricultural Science* **152**, 75-92 (2014).
- 3 Hansen, S. Estimation of Potential and Actual Evapotranspiration Paper presented at the Nordic Hydrological Conference (Nyborg, Denmark, August-1984). *Hydrology Research* **15**, 205-212 (1984).
- 4 Olesen, J. E. *et al.* Comparison of methods for simulating effects of nitrogen on green area index and dry matter growth in winter wheat. *Field Crops Research* **74**, 131-149 (2002).
- 5 Zhao, G. *et al.* The implication of irrigation in climate change impact assessment: a European wide study. *Global Change Biology* **21**, 4031–4048, doi:10.1111/gcb.13008 (2015).
- 6 Allen, R. G., Pereira, L. S., Raes, D. & Smith, M. Crop evapotranspiration-Guidelines for computing crop water requirements-FAO Irrigation and drainage paper 56. *FAO, Rome* **300**, 6541 (1998).
- 7 Yu, O., Goudriaan, J. & Wang, T.-D. Modelling Diurnal Courses of Photosynthesis and Transpiration of Leaves on the Basis of Stomatal and Non-Stomatal Responses, Including Photoinhibition. *Photosynthetica* **39**, 43-51, doi:10.1023/a:1012435717205 (2001).
- 8 Hoffmann, F. FAGUS, a model for growth and development of beech. *Ecological Modelling* **83**, 327-348 (1995).
- 9 Kersebaum, K. & Nendel, C. Site-specific impacts of climate change on wheat production across regions of Germany using different CO₂ response functions. *European Journal of Agronomy* **52**, 22-32 (2014).
- 10 Mitchell, R. *et al.* Effects of elevated CO₂ concentration and increased temperature on winter wheat: test of ARCWHEAT1 simulation model. *Plant, Cell & Environment* **18**, 736-748 (1995).
- 11 Priestley, C. & Taylor, R. On the assessment of surface heat flux and evaporation using large-scale parameters. *Monthly weather review* **100**, 81-92 (1972).
- 12 Suleiman, A. A. & Ritchie, J. T. Modifications to the DSSAT vertical drainage model for more accurate soil water dynamics estimation. *Soil science* **169**, 745-757 (2004).
- 13 Ludwig, F. & Asseng, S. Climate change impacts on wheat production in a Mediterranean environment in Western Australia. *Agricultural Systems* **90**, 159-179 (2006).
- 14 Ritchie, J. in *Understanding options for agricultural production* 41-54 (Springer, 1998).
- 15 Soltani, A., Maddah, V. & Sinclair, T. SSM-Wheat: a simulation model for wheat development, growth and yield. *International Journal of Plant Production* **7**, 711-740 (2013).
- 16 Soltani, A. *Modeling physiology of crop development, growth and yield*. (CABi, 2012).
- 17 Jamieson, P. D. *et al.* Modelling CO₂ effects on wheat with varying nitrogen supplies. *Agriculture, ecosystems & environment* **82**, 27-37 (2000).
- 18 Jamieson, P., Brooking, I., Porter, J. & Wilson, D. Prediction of leaf appearance in wheat: a question of temperature. *Field Crops Research* **41**, 35-44 (1995).
- 19 Martre, P. *et al.* Modelling protein content and composition in relation to crop nitrogen dynamics for wheat. *European Journal of Agronomy* **25**, 138-154 (2006).
- 20 Ritchie, J. T. Model for predicting evaporation from a row crop with incomplete cover. *Water resources research* **8**, 1204-1213 (1972).
- 21 Tanner, C. & Jury, W. Estimating Evaporation and Transpiration from a Row Crop during Incomplete Cover 1. *Agronomy Journal* **68**, 239-243 (1976).

- 22 Vignjevic, M., Wang, X., Olesen, J. E. & Wollenweber, B. Traits in spring wheat cultivars associated with yield loss caused by a heat stress episode after anthesis. *Journal of Agronomy and Crop Science* **201**, 32-48 (2015).
- 23 SEGUIN, B. & ITIER, B. Using midday surface temperature to estimate daily evaporation from satellite thermal IR data. *International Journal of Remote Sensing* **4**, 371-383 (1983).
- 24 Gabaldón-Leal, C. *et al.* Modelling the impact of heat stress on maize yield formation. *Field Crops Research* **198**, 226-237 (2016).
- 25 Webber, H. A. *et al.* Simulating canopy temperature for modelling heat stress in cereals. *Environmental Modelling & Software* **77**, 143-155 (2016).
- 26 Hoogenboom, G. & Huck, M. G. Rootsimu v4. 0: A dynamic simulation of root growth, water uptake, and biomass partitioning in a soil-plant-atmosphere continuum: Update and documentation. *Agronomy and soils departmental series-Auburn University, Alabama Agricultural Experiment Station (USA)* (1986).
- 27 Thom, A. & Oliver, H. On Penman's equation for estimating regional evaporation. *Quarterly Journal of the Royal Meteorological Society* **103**, 345-357 (1977).
- 28 Challinor, A., Wheeler, T., Craufurd, P. & Slingo, J. Simulation of the impact of high temperature stress on annual crop yields. *Agricultural and Forest Meteorology* **135**, 180-189 (2005).
- 29 Moriondo, M., Giannakopoulos, C. & Bindi, M. Climate change impact assessment: the role of climate extremes in crop yield simulation. *Climatic Change* **104**, 679-701 (2011).
- 30 Maiorano, A. *et al.* Crop model improvement reduces the uncertainty of the response to temperature of multi-model ensembles. *Field Crops Research* **202**, 5-20 (2017).
- 31 Jamieson, P. D. *et al.* A comparison of the models AFRCWHEAT2, CERES-wheat, Sirius, SUCROS2 and SWHEAT with measurements from wheat grown under drought. *Field Crops Research* **55**, 23-44 (1998).
- 32 He, J. *et al.* Simulation of environmental and genotypic variations of final leaf number and anthesis date for wheat. *European Journal of Agronomy* **42**, 22-33 (2012).
- 33 Wang, E. *et al.* The uncertainty of crop yield projections is reduced by improved temperature response functions. *Nature plants* **3**, 17102 (2017).
- 34 Stratonovitch, P. & Semenov, M. A. Heat tolerance around flowering in wheat identified as a key trait for increased yield potential in Europe under climate change. *Journal of experimental botany*, erv070 (2015).
- 35 Lizaso, J. *et al.* Modeling the response of maize phenology, kernel set, and yield components to heat stress and heat shock with CSM-IXIM. *Field Crops Research* **214**, 239-252 (2017).
- 36 Metzger, M., Bunce, R., Jongman, R., Múcher, C. & Watkins, J. A climatic stratification of the environment of Europe. *Global Ecology and Biogeography* **14**, 549-563 (2005).