

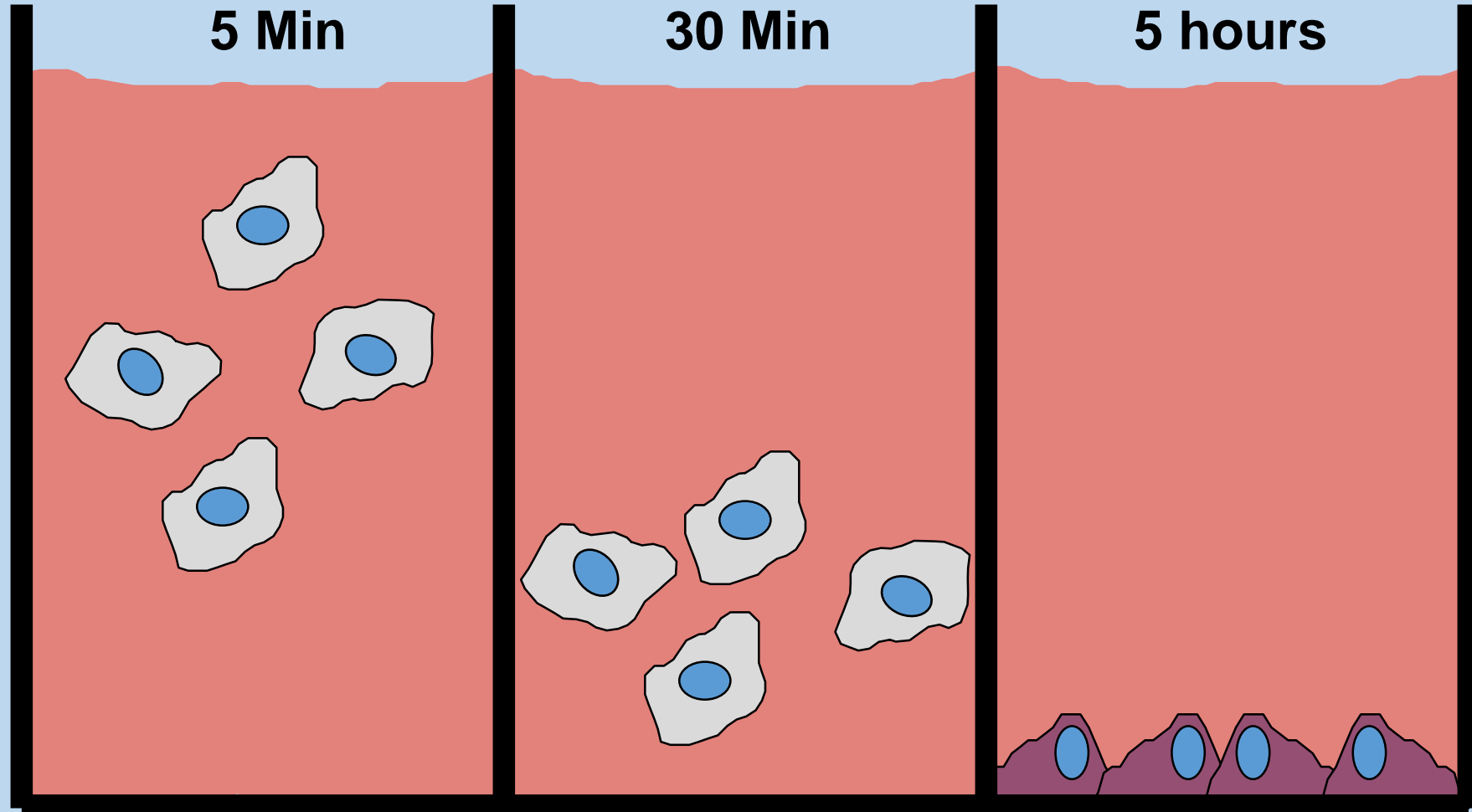
Ciencia y Tecnología Biomédica en la Estación Espacial Internacional



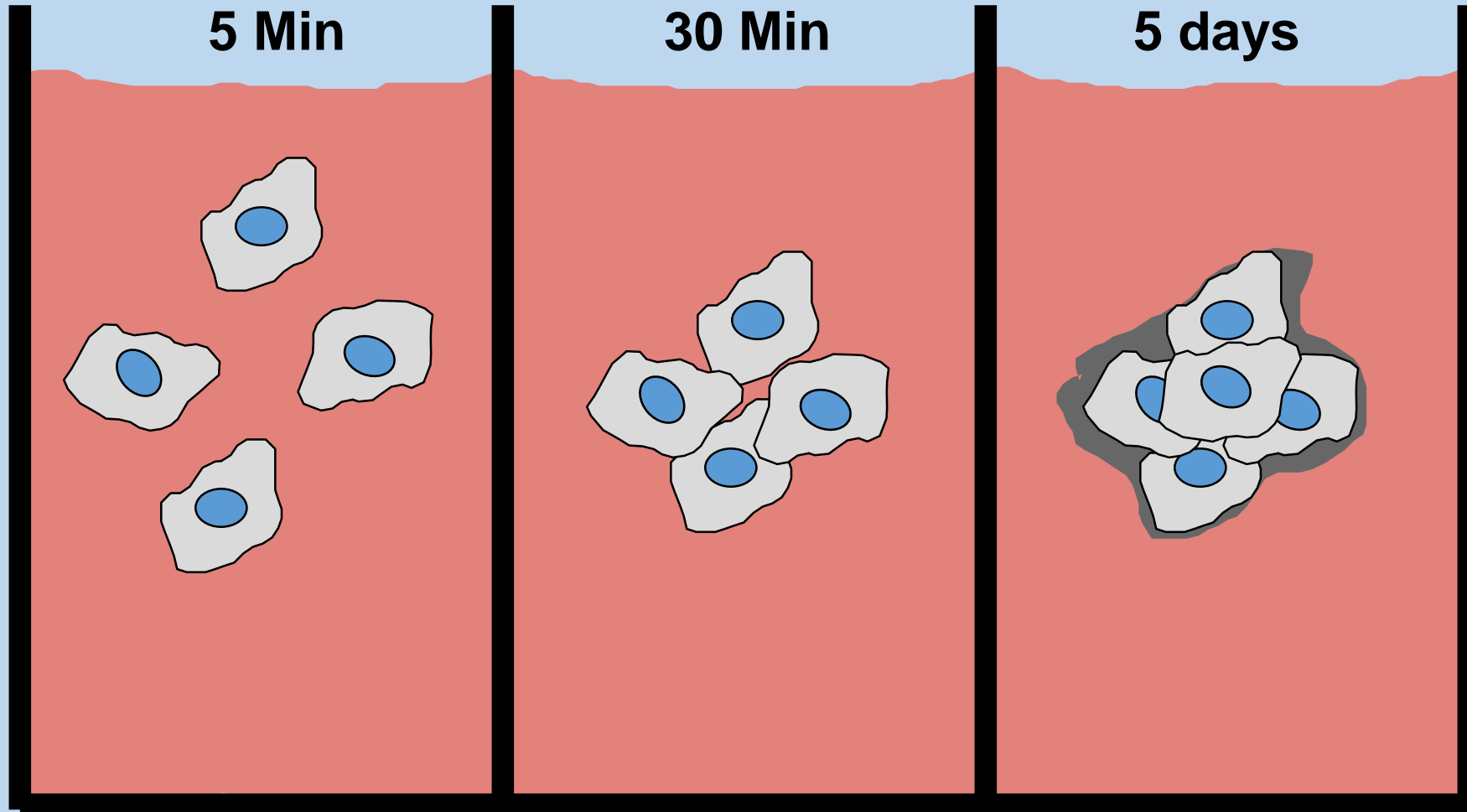
Beneficios para la Humanidad

ESI AMLAT Expo-Ciencias Latinoamericana
Antofagasta, Chile
2018

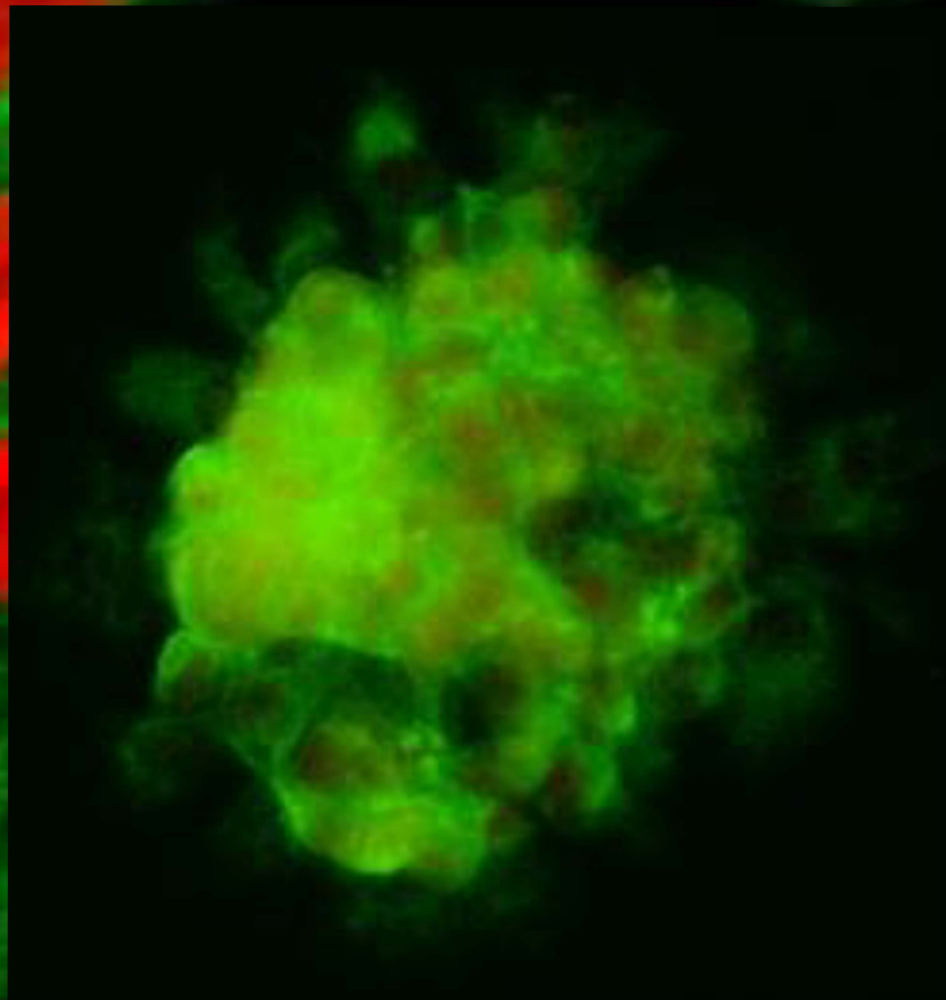
Cultivo de Células en Gravedad Terrestre



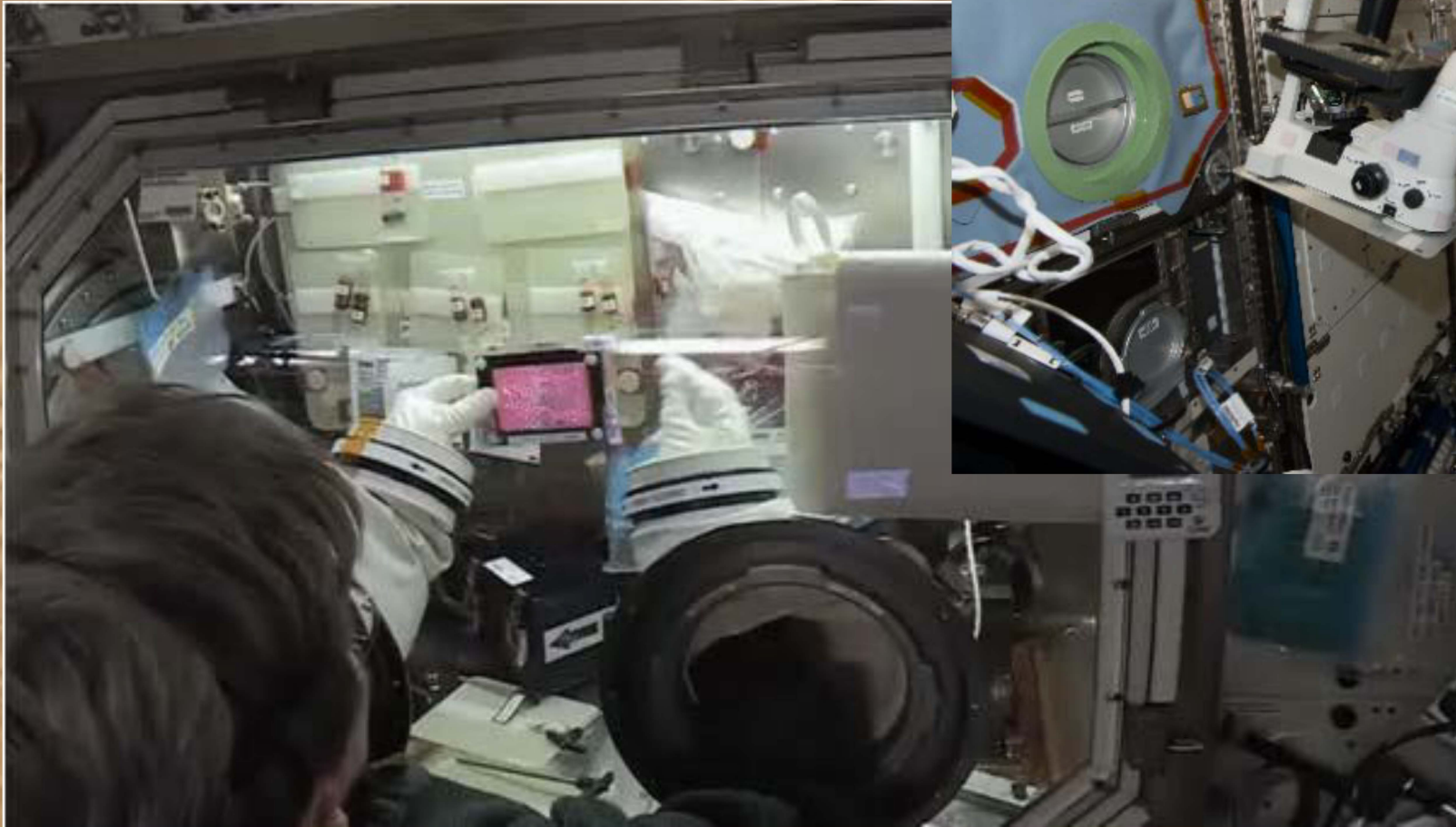
Cultivo de Células en Microgravedad Espacial



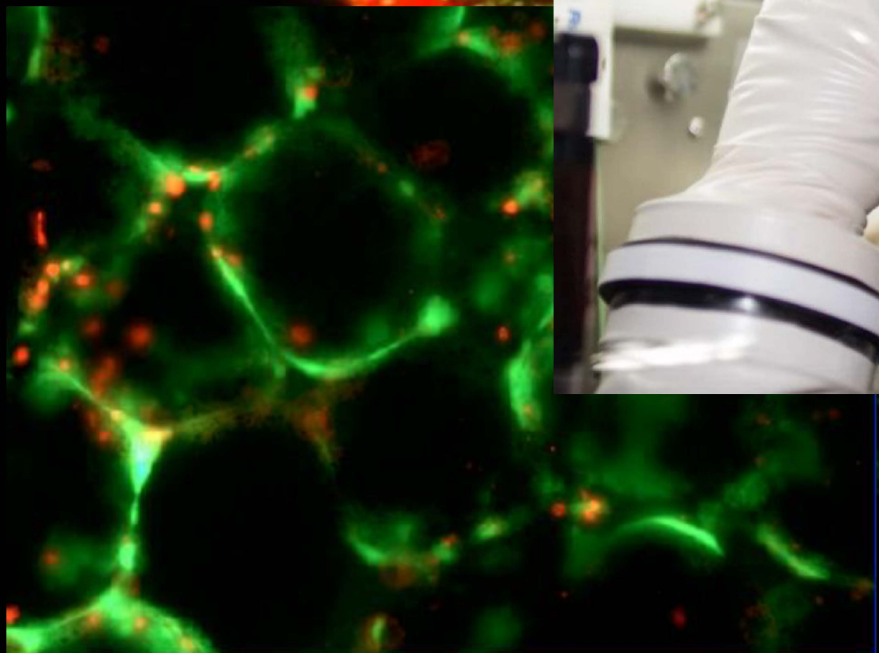
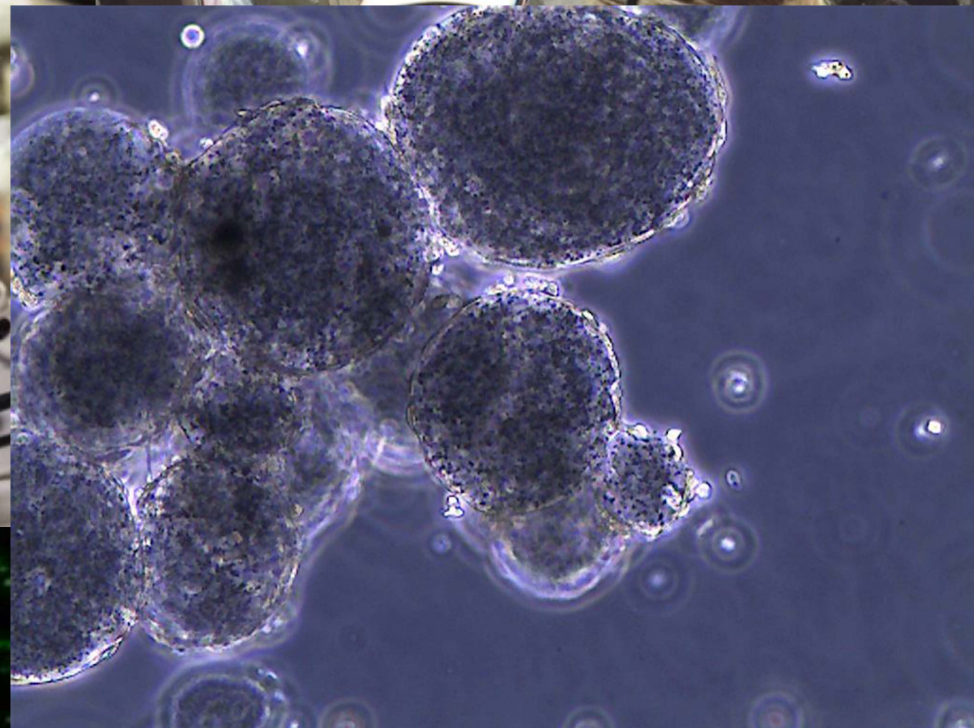
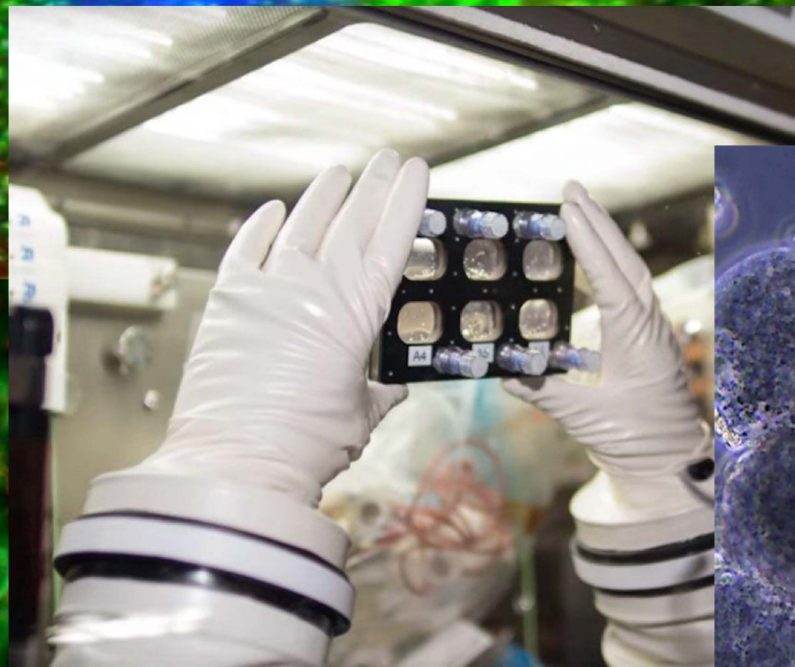
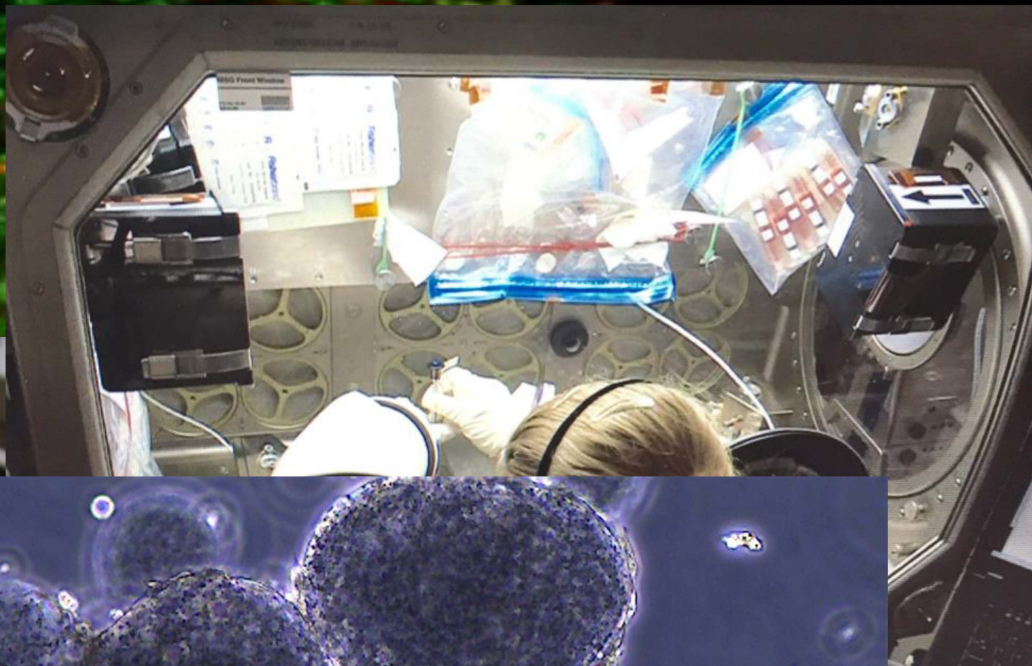
Ingeniería de Tejidos Celulares



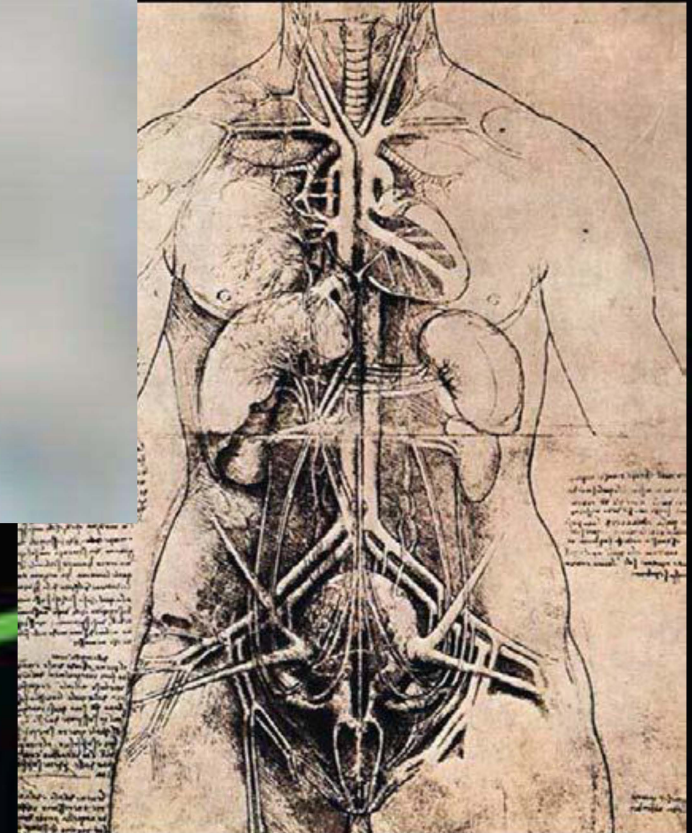
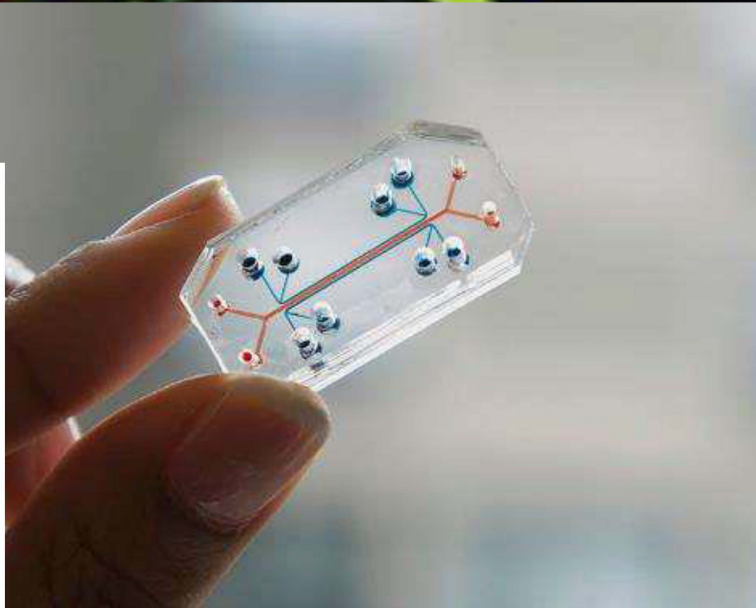
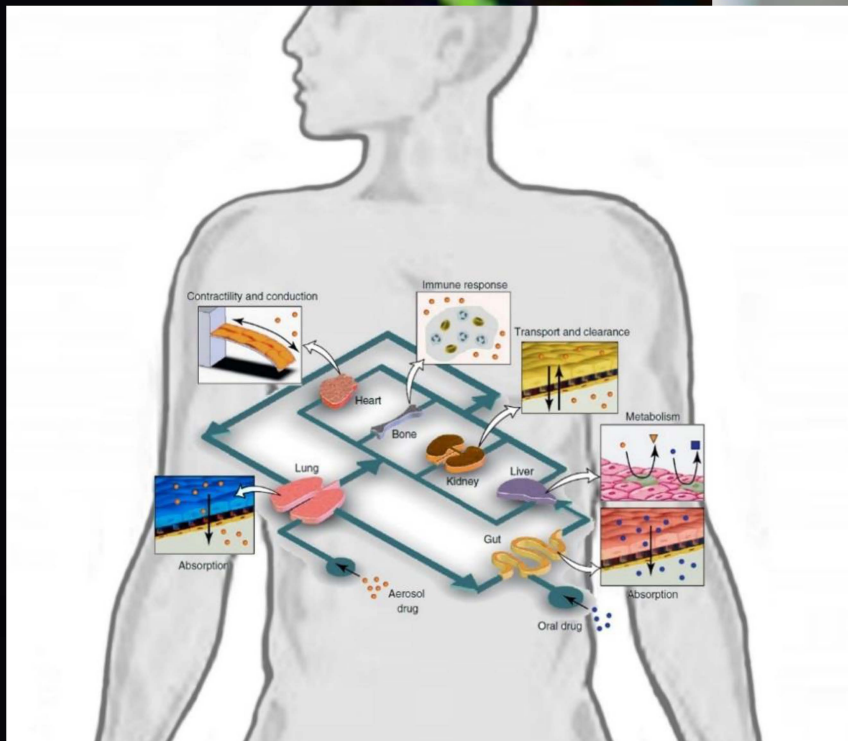
Cultivo de Células Progenitoras



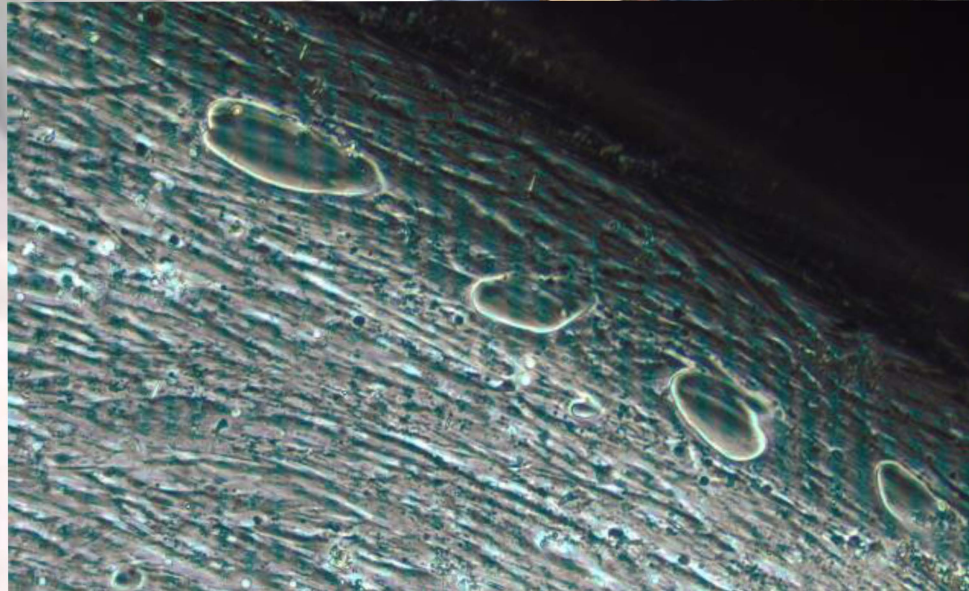
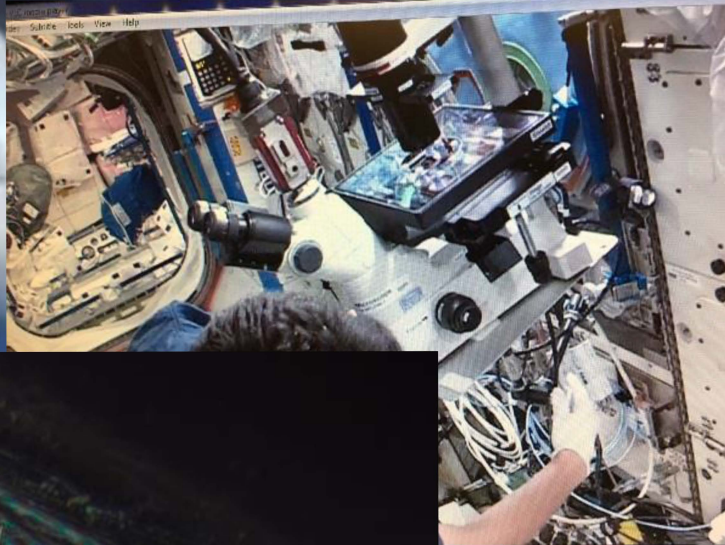
Modelos de Organos y Enfermedades



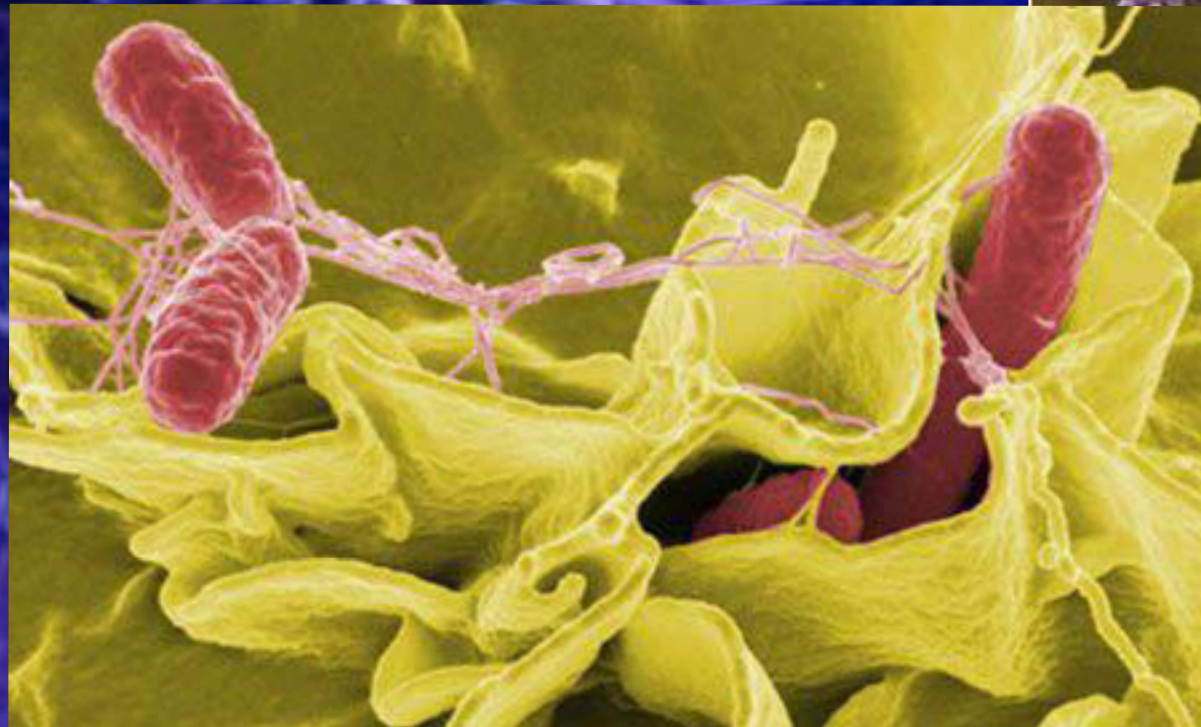
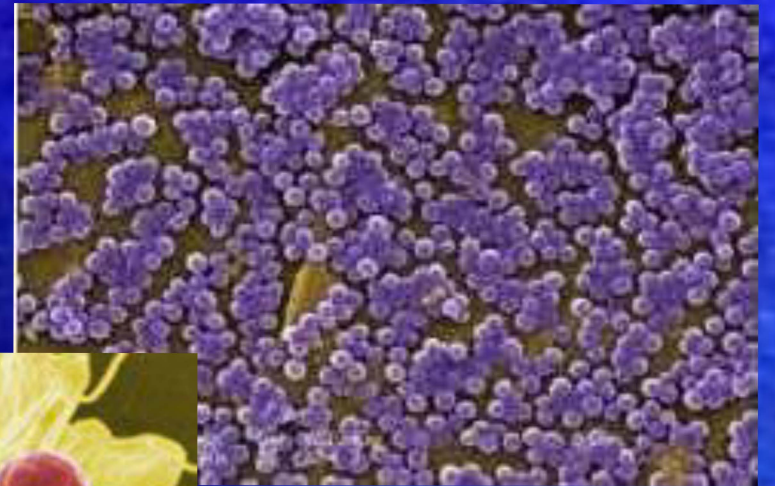
Organos en un Chip



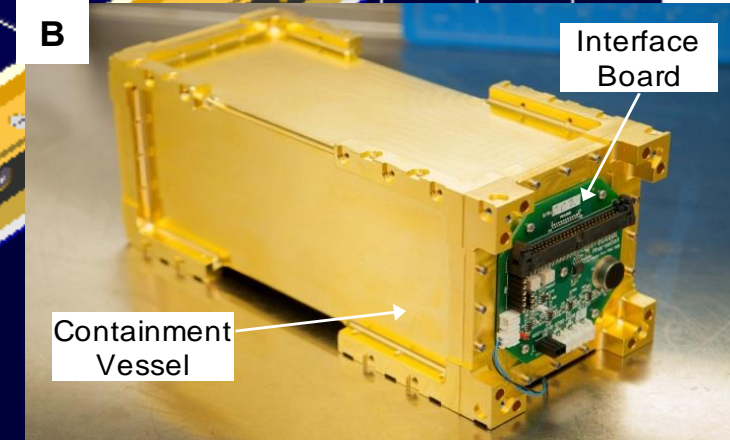
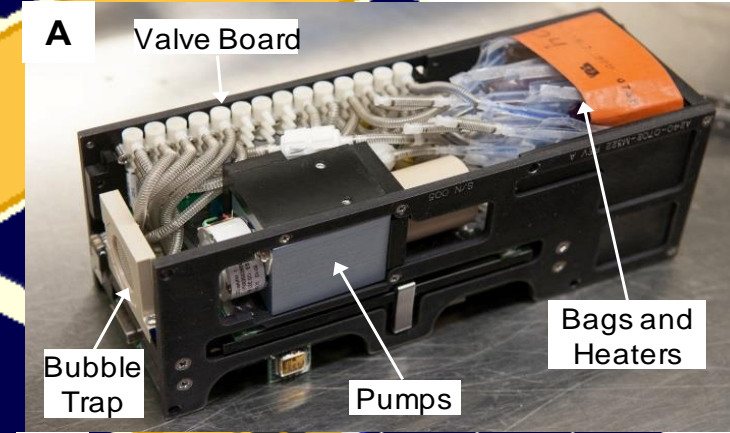
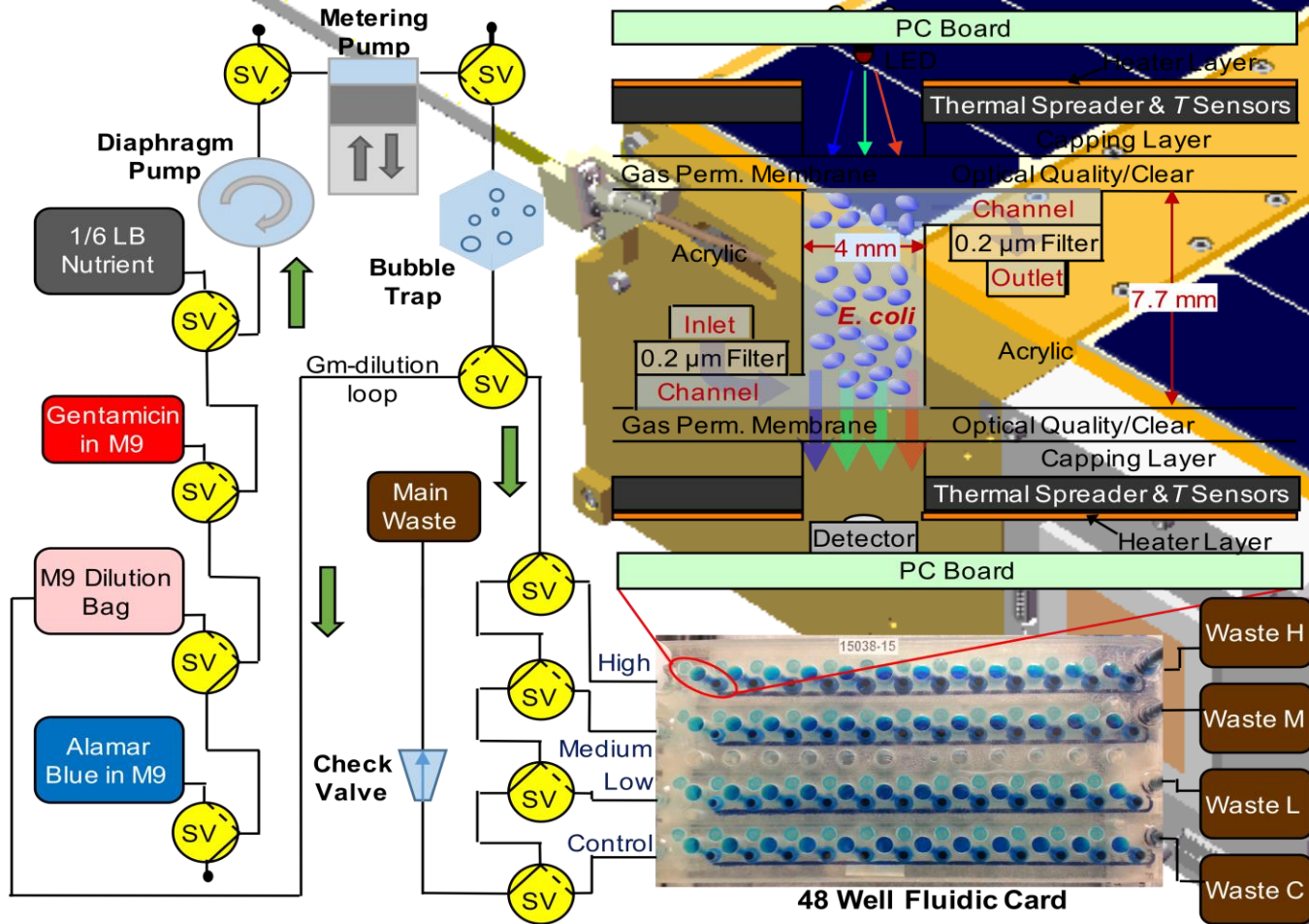
Bioingeniería



Desarrollo de Vacunas



Microsatélite Biológico Microfluídico

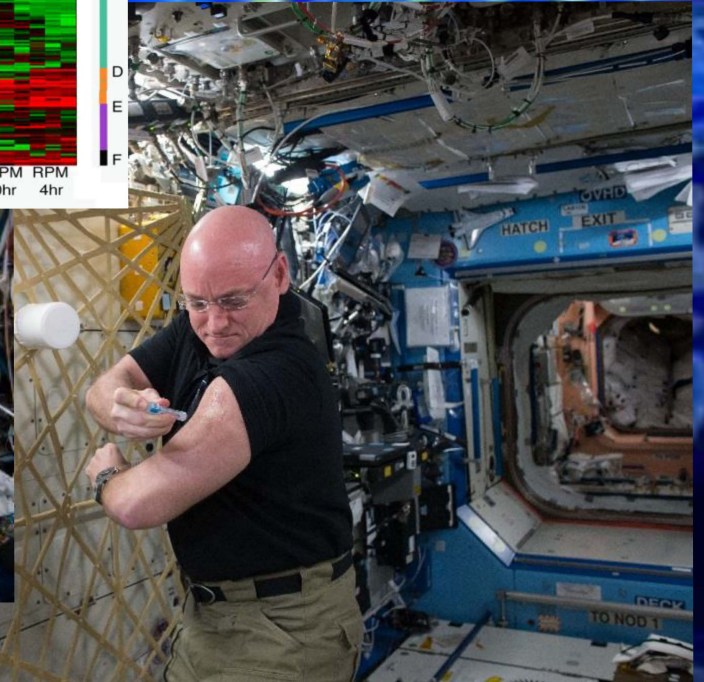
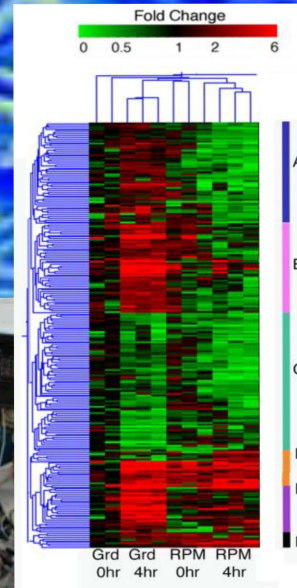
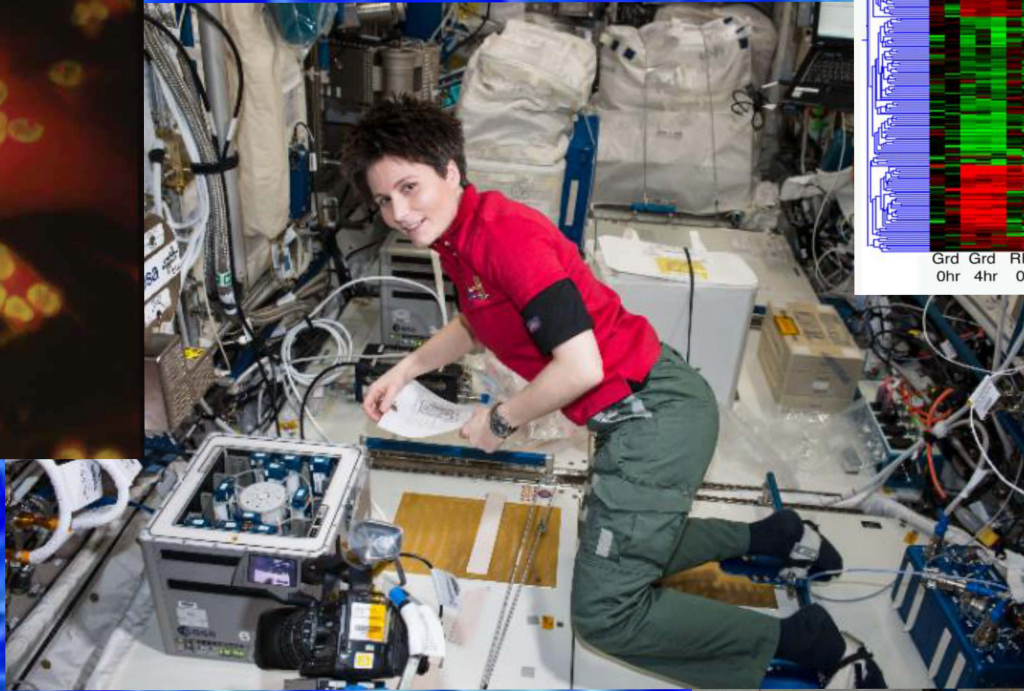
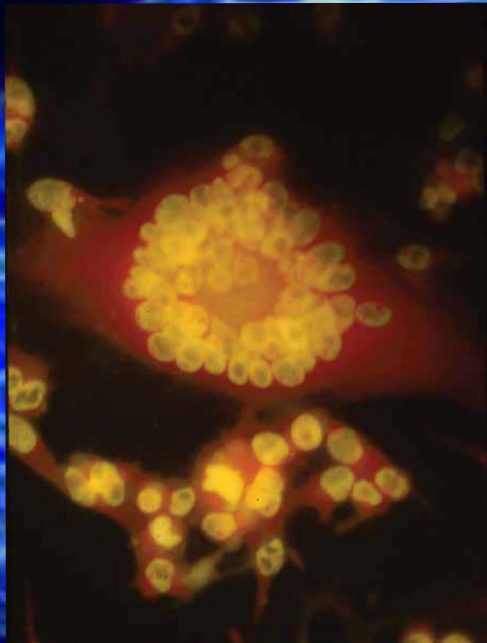


	Growth	Challenge	Measure
Pumping	48 hr	48 hr	56 hr
	Growth to Stationary w/ 1/6 LB	Antibiotic Incubation	Alamar Blue Viability Measurements

Temp control ON: Incubate at 37°C

Optics ON: 15 min Readings

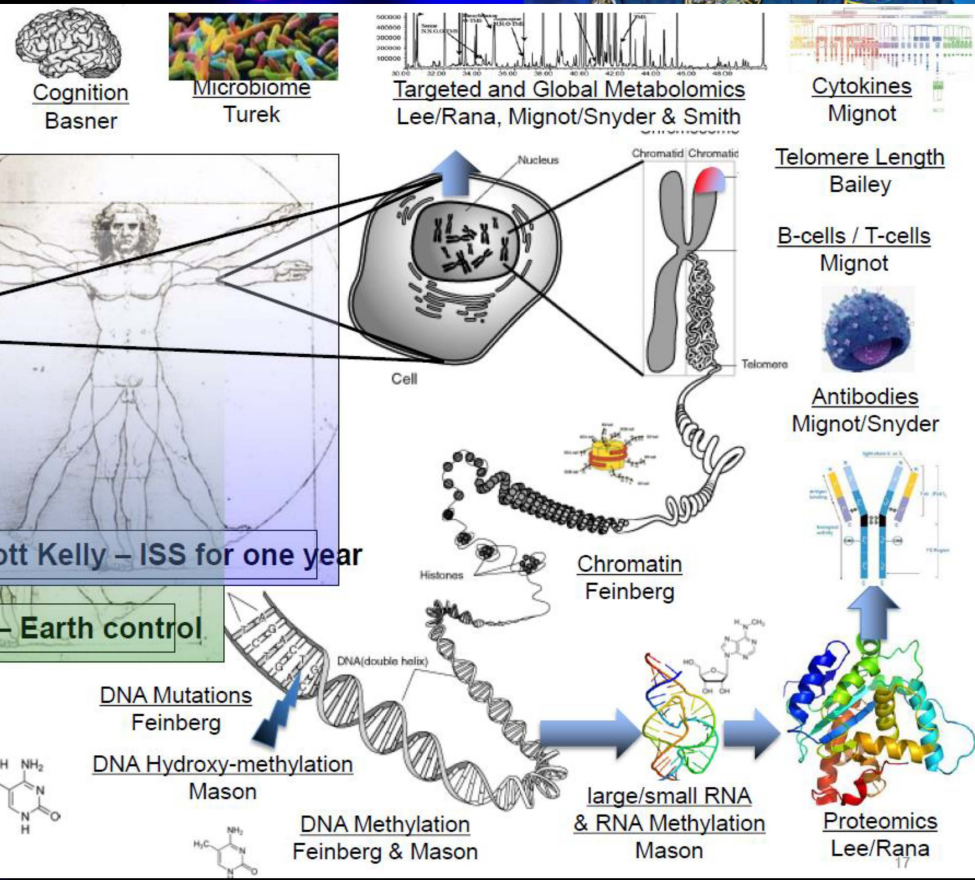
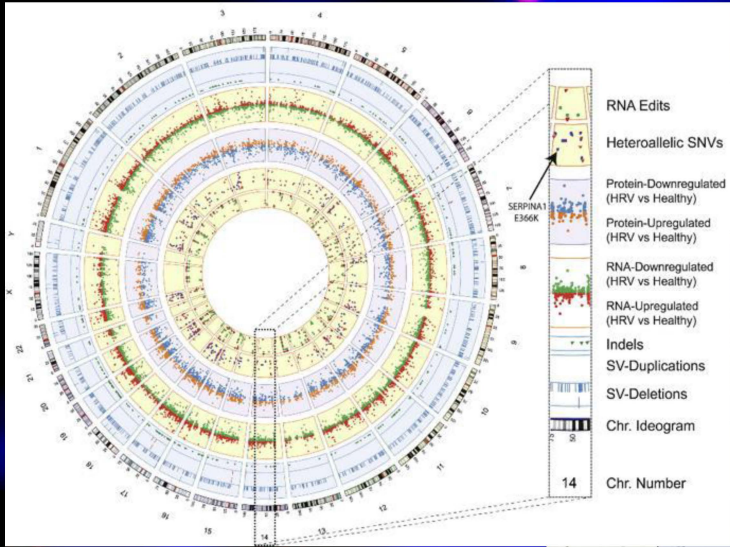
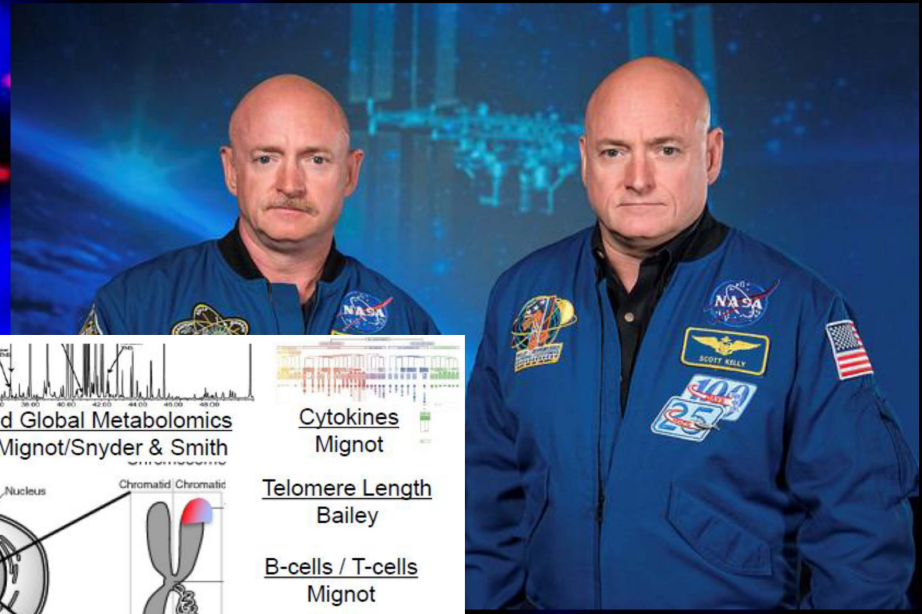
Inmunidad



Bioquímica de Nutrición



Análisis Omico Humano



Scott Kelly – ISS for one year

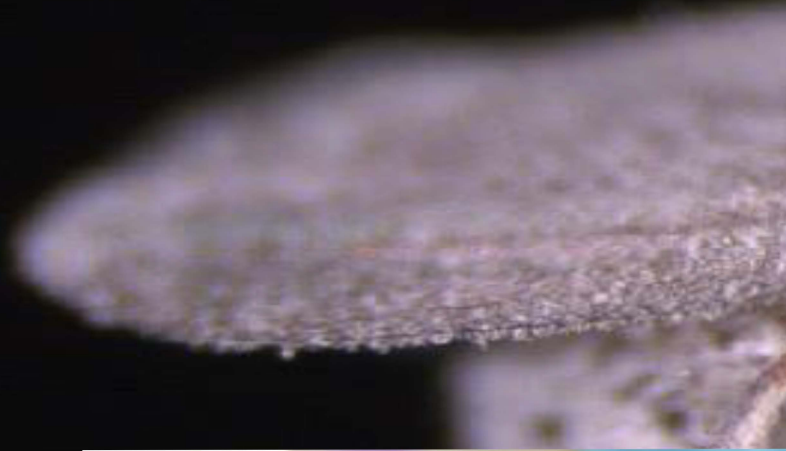
Mark Kelly – Earth control

Informática Genética

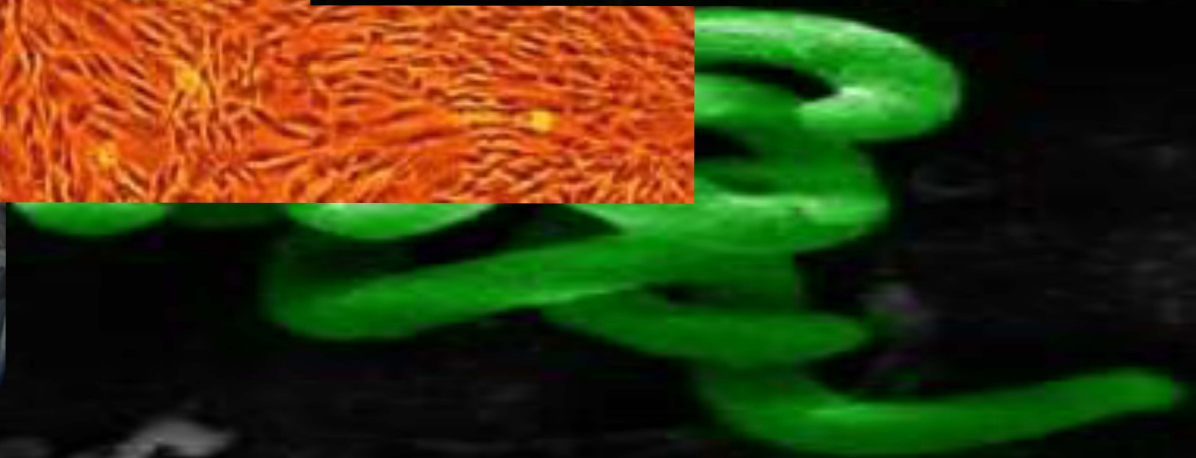
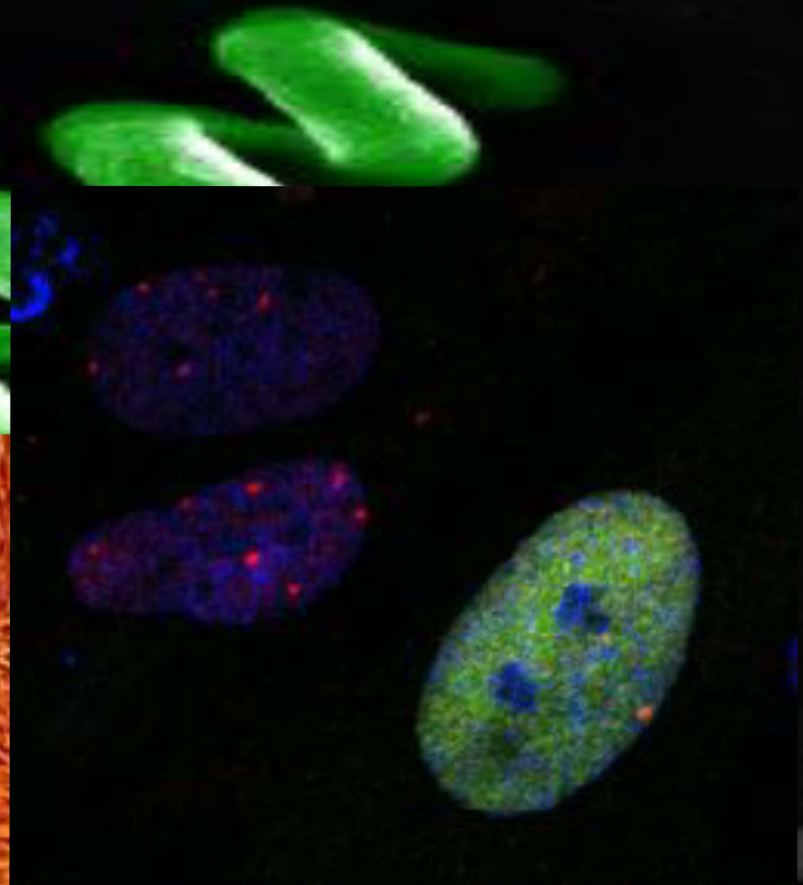
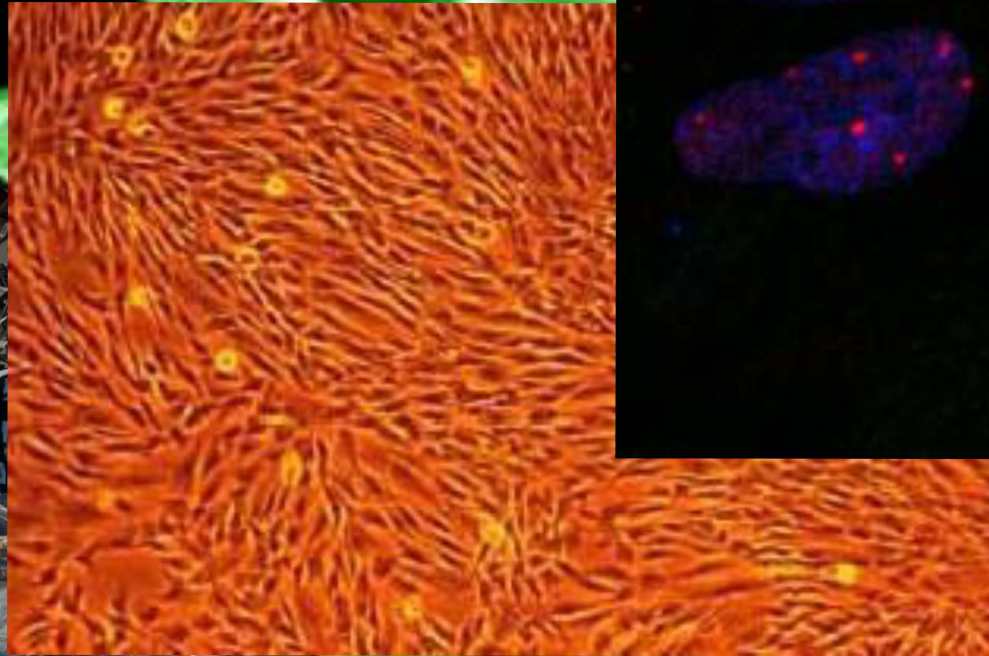


A screenshot of the GeneLab website interface. At the top left is the NASA logo. To its right is the text "GeneLab" and "Open Science for Exploration". Below this is a row of six icons representing different organisms: a human figure, a mouse, a fly, a snake, a potted plant, and a cluster of grapes. Underneath the icons is a navigation menu with links for "Home", "Repository", "Data", "Data Mining Tools", "Submit Data", "Help", and "Workspace". To the right of the menu is a circular logo with a colorful DNA helix. Below the menu is a search bar with the text "Search Data" and a magnifying glass icon. At the bottom of the search bar are several radio buttons for filtering data: "All", "GeneLab" (which is selected), "NIH GEO", "EBI PRIDE", and "ANL MG-RAST".

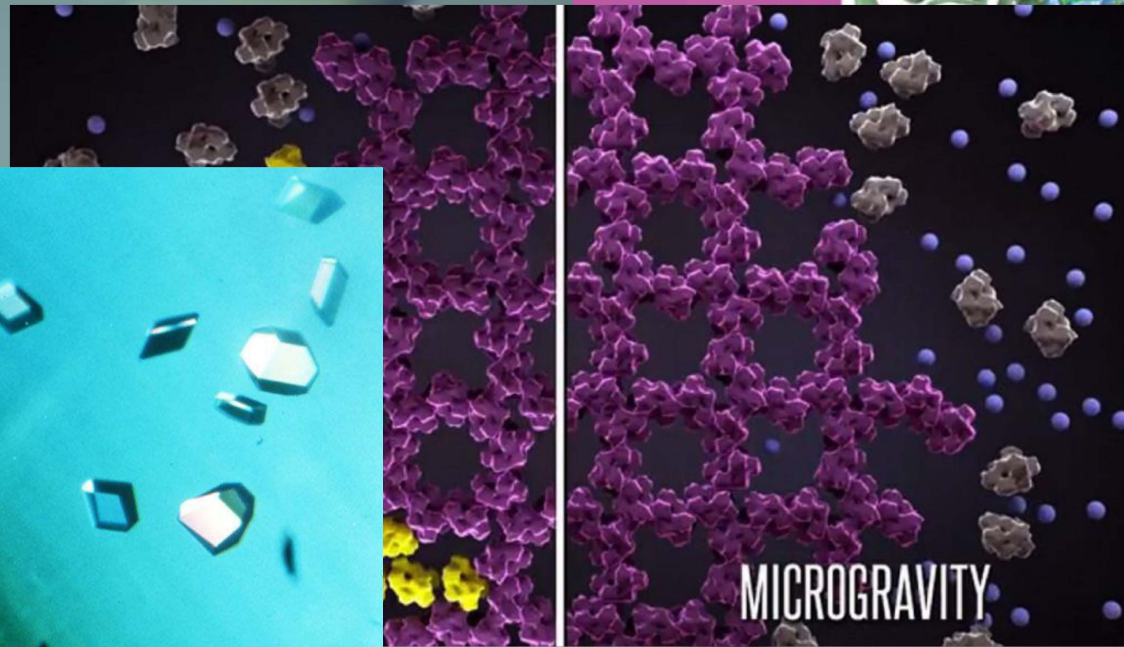
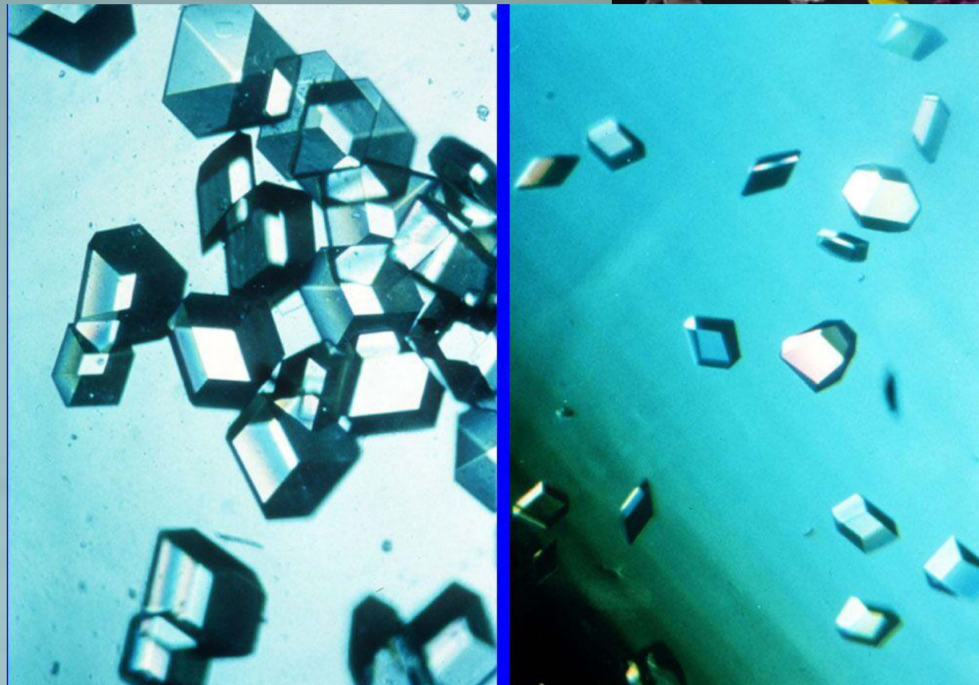
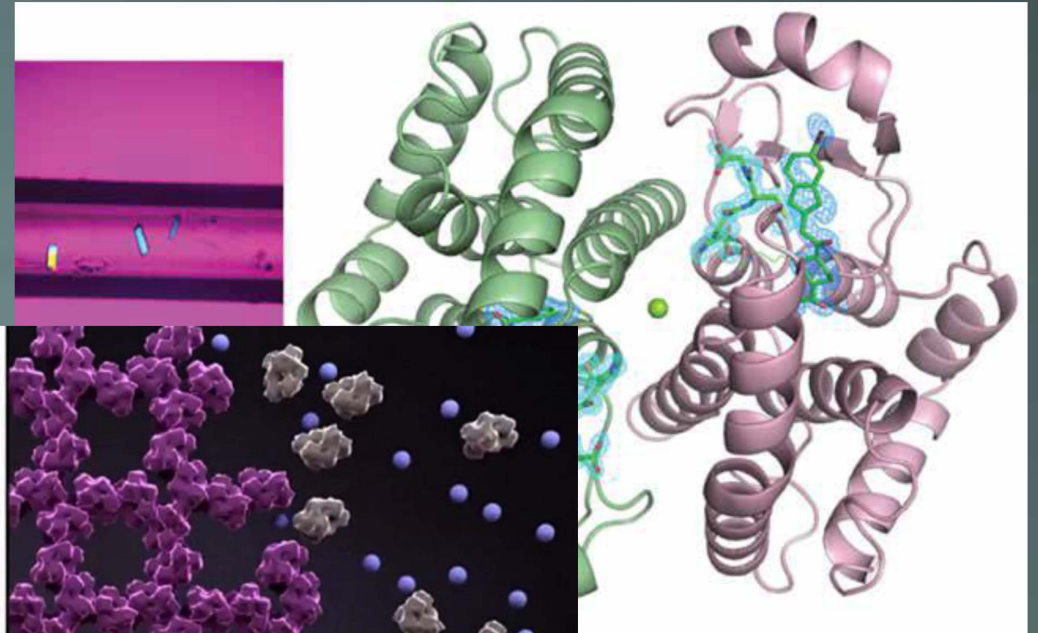
Organismos Modelo



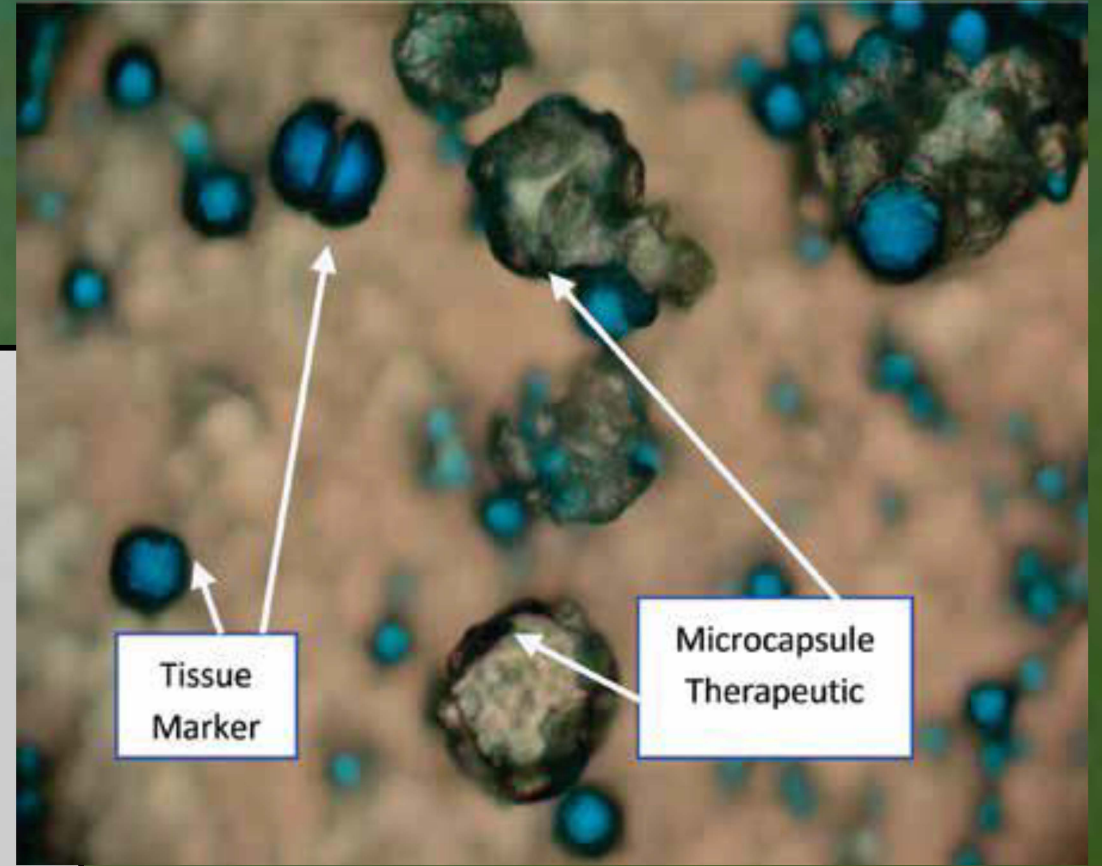
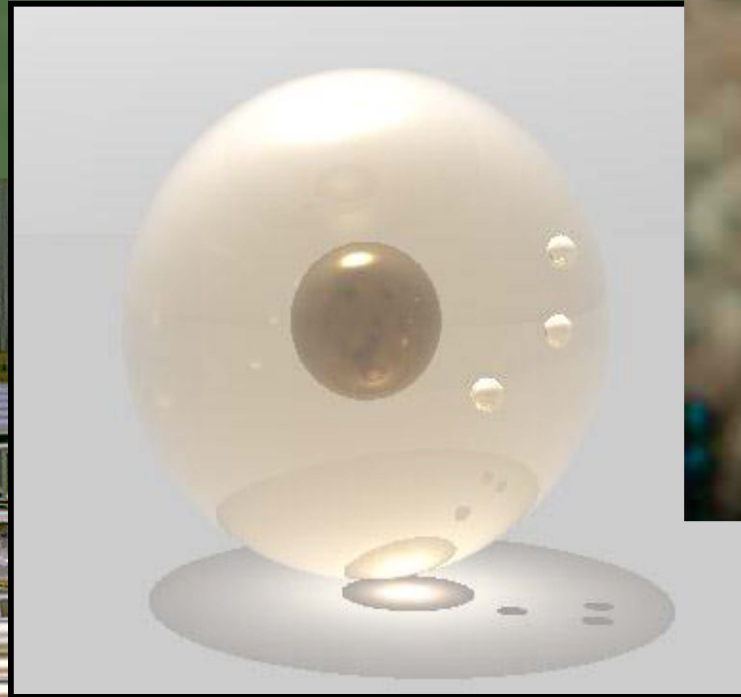
Efectos del Ambiente Espacial



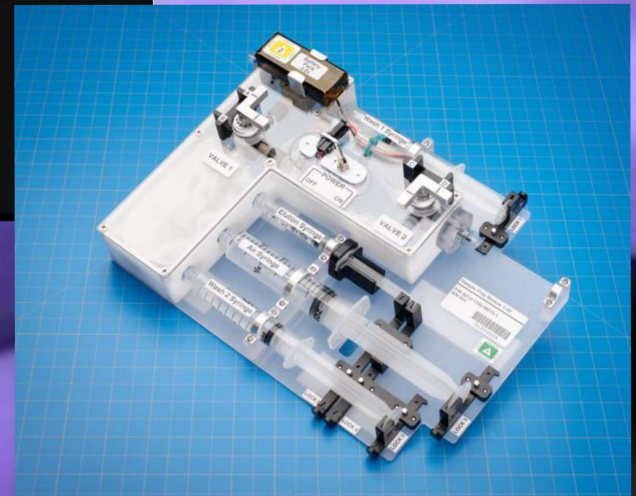
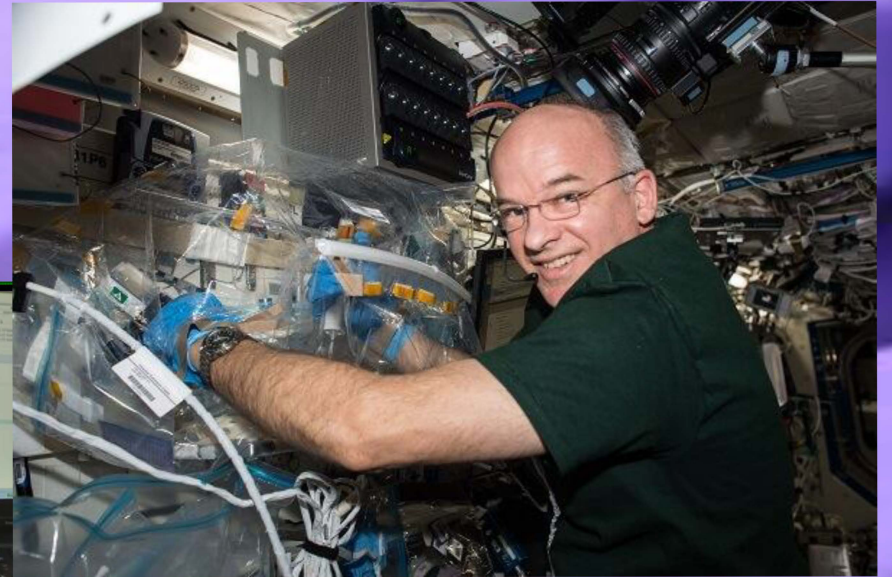
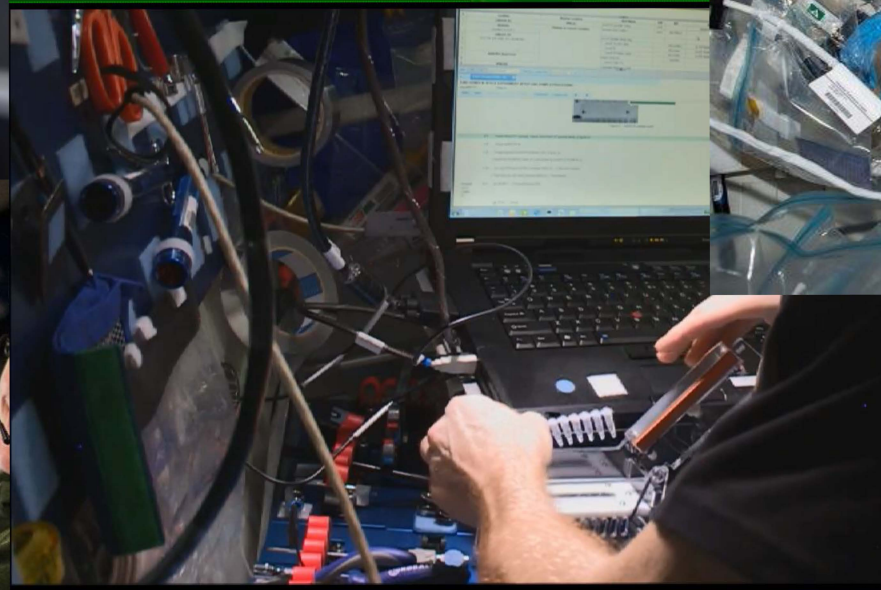
Crecimiento de Cristales Macromoleculares



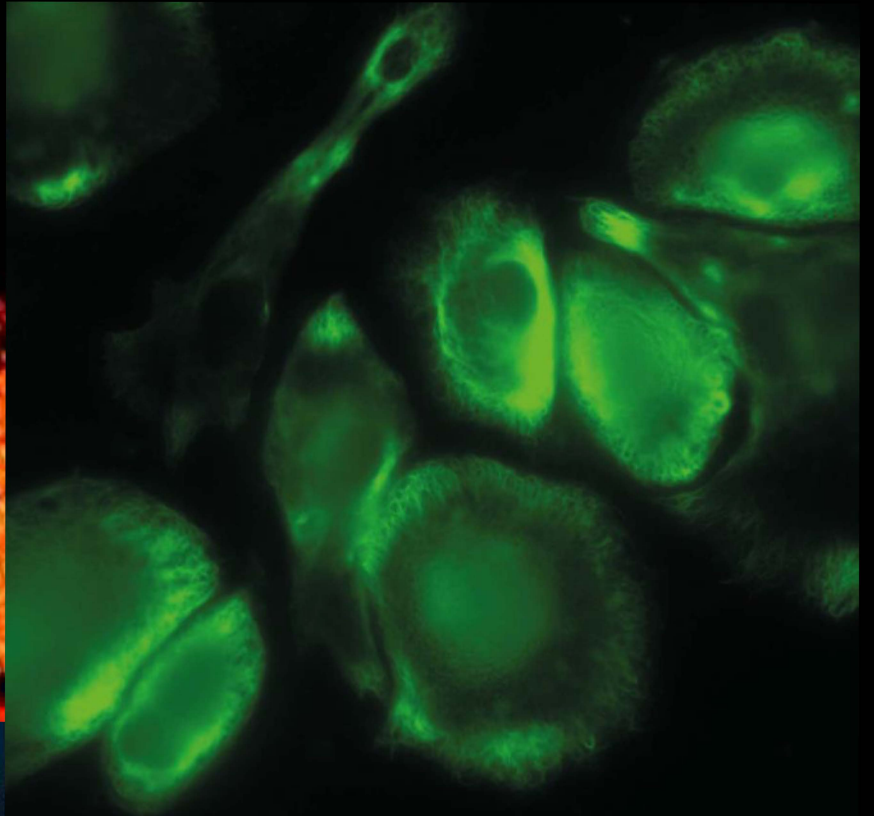
Microencapsulación de Medicinas



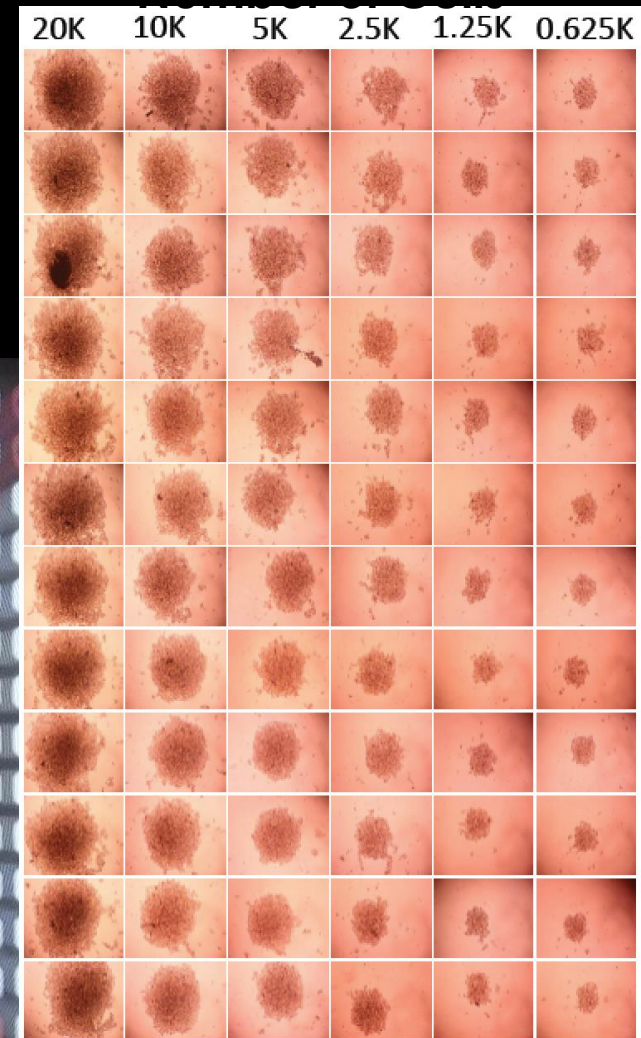
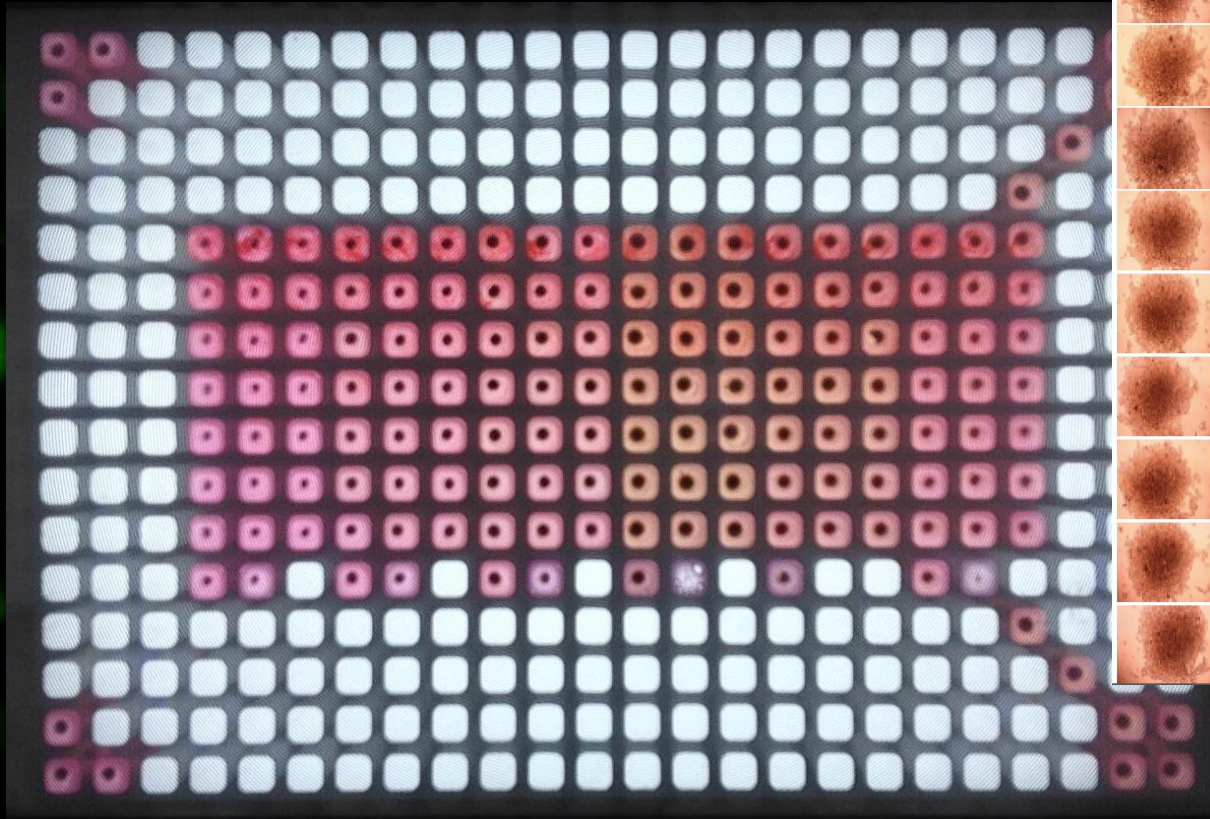
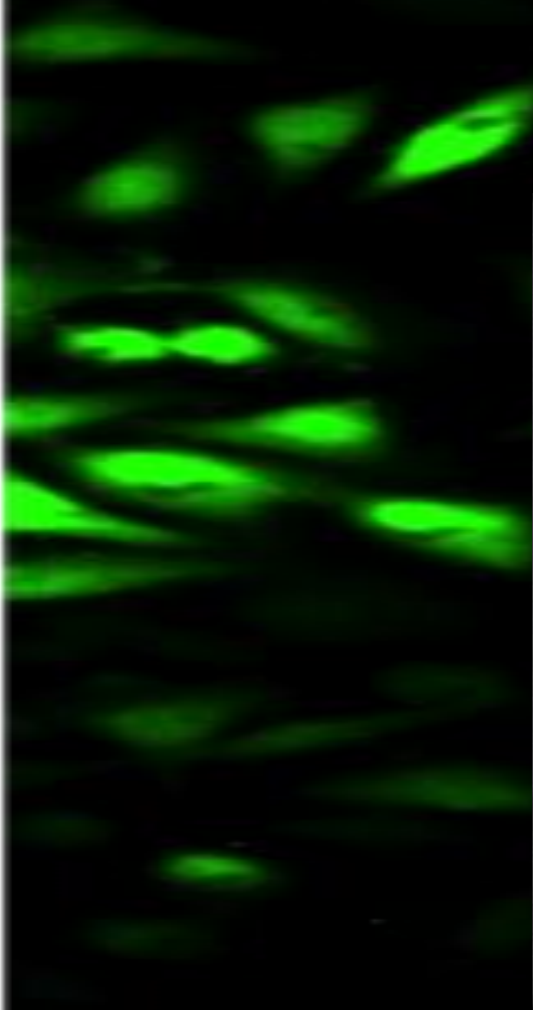
Análisis Biomoleculares



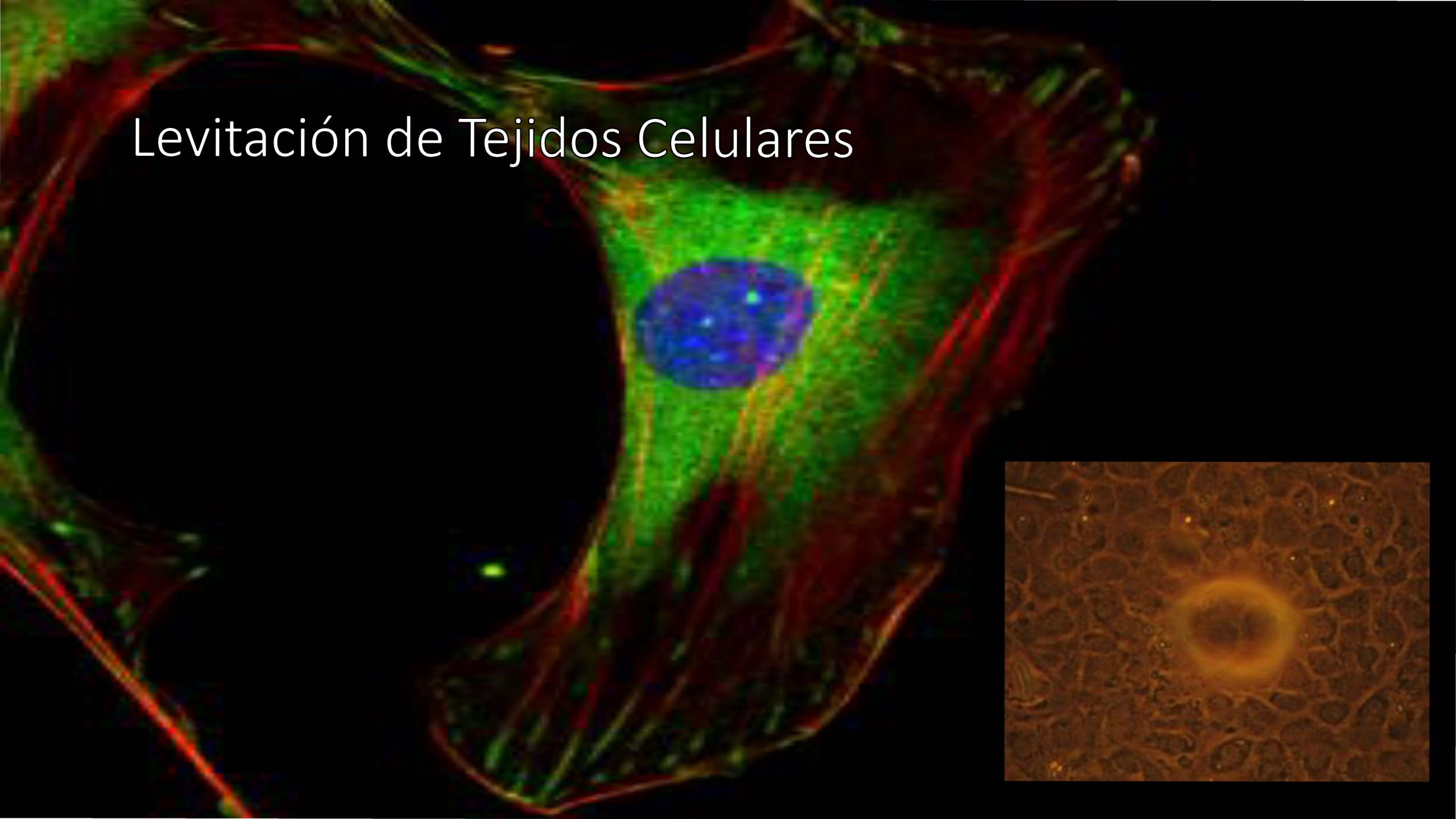
Microscopía Confocal



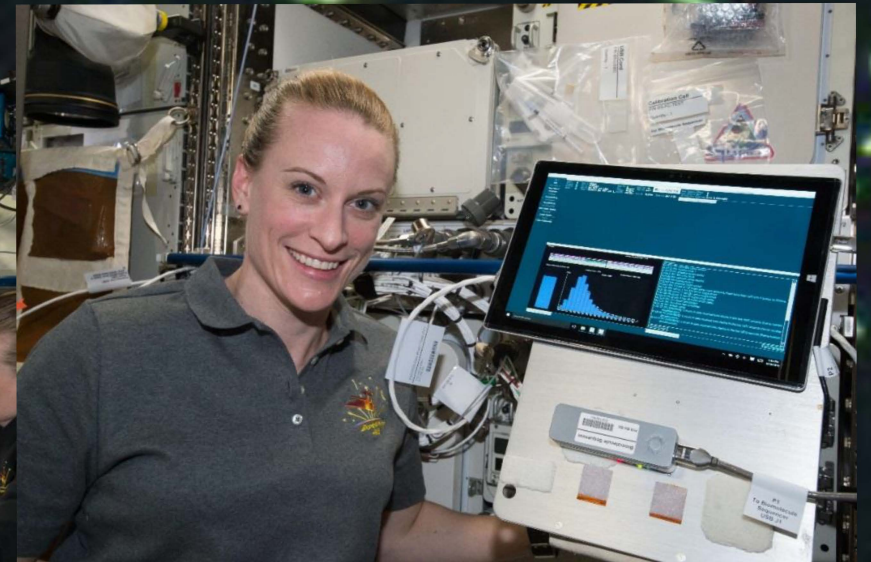
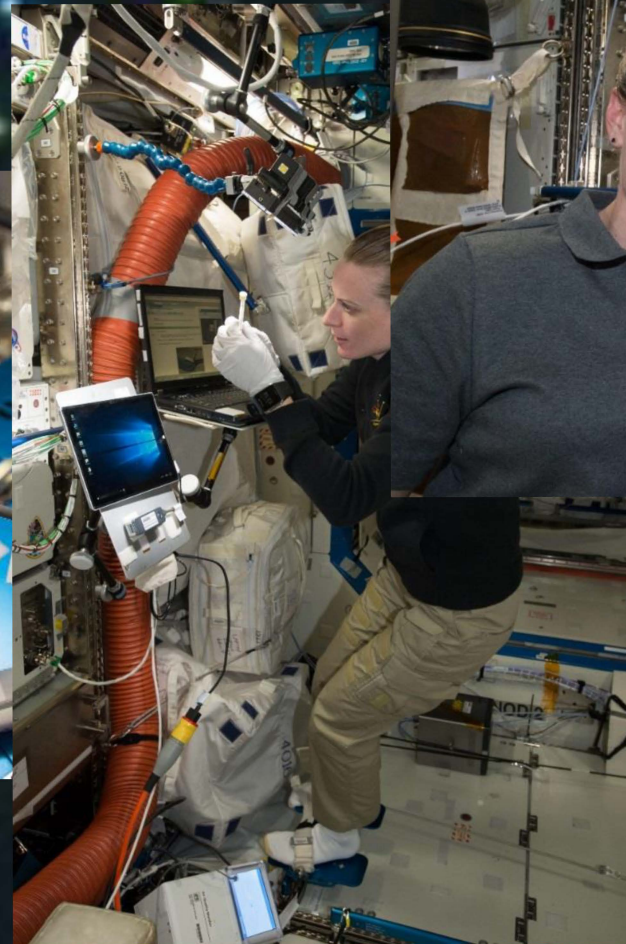
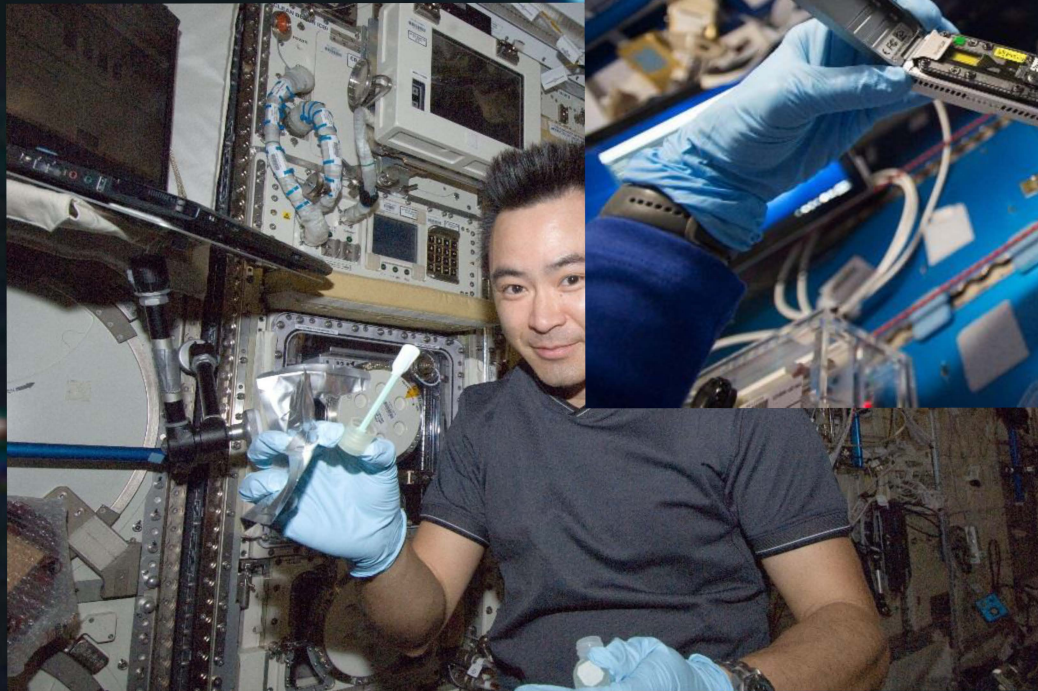
Bioimpresión Tridimensional



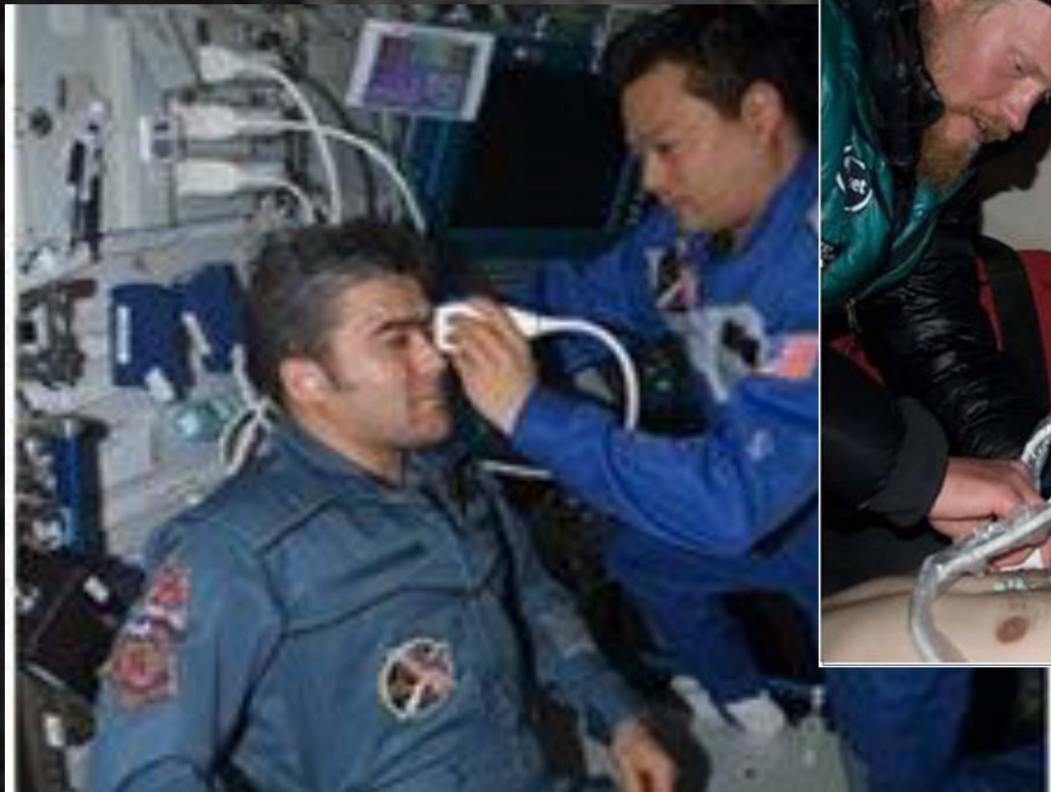
Levitación de Tejidos Celulares



Identificación de Microbios



Ultrasonido Diagnóstico para Telemedicina



Comportamiento Humano



