



Mechanotransductive regulation of gap-junction activity between MLO-Y4 osteocyte-like and MC3T3-E1 osteoblast-like cells in Three-Dimensional Co-Culture.

C.M. Juran¹, E.A. Blaber¹, E.A.C. Almeida¹.

¹Space Biosciences Division, NASA Ames Research Center, Moffett Field, CA, USA

Presented by: Cassandra M. Juran, Ph.D.

ASGSR Annual Meeting October 28, 2016



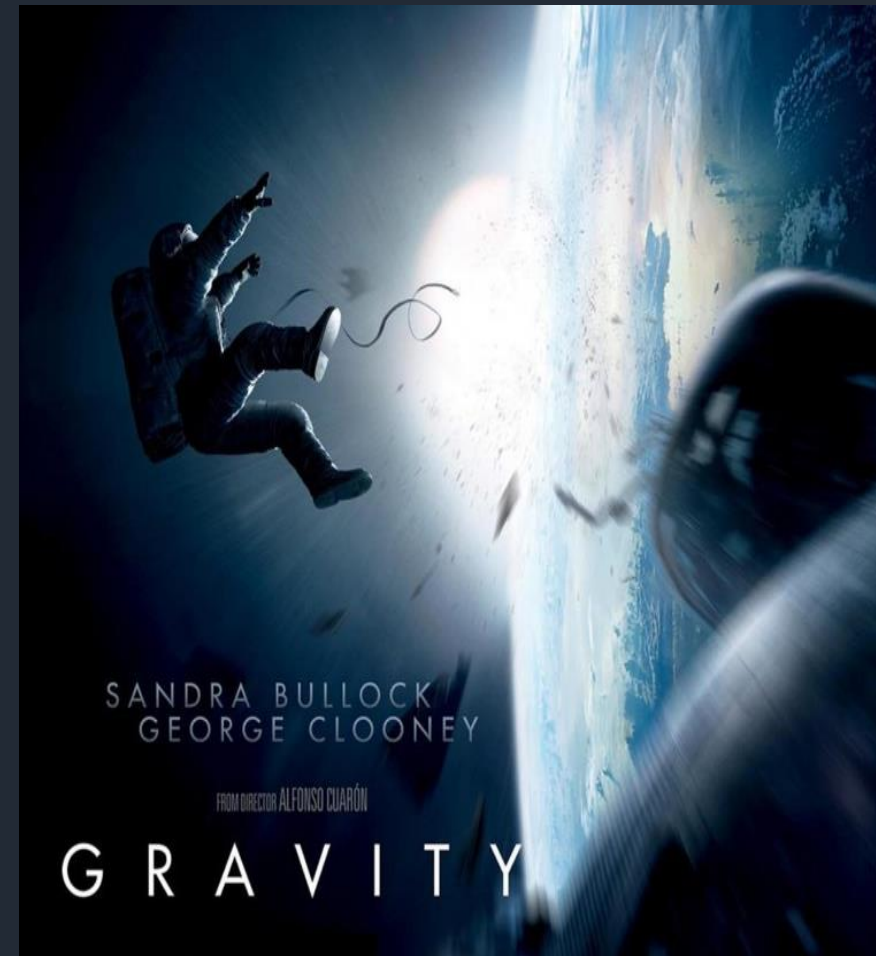
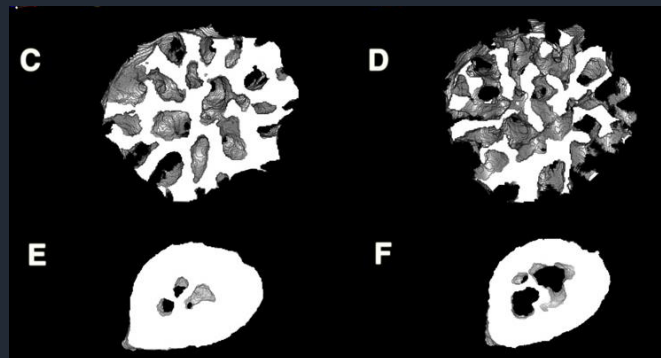
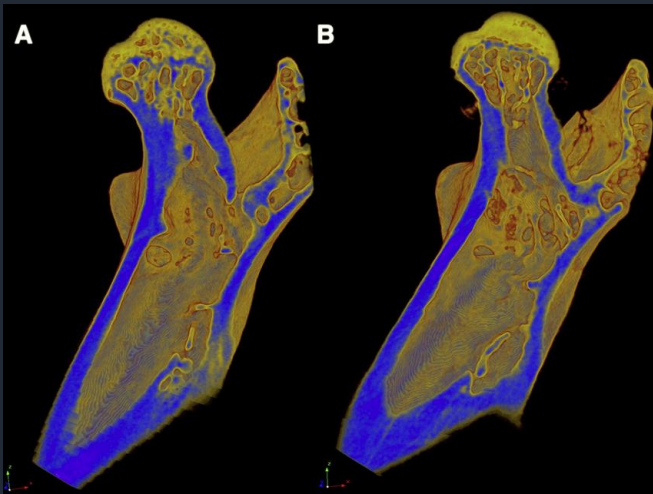
Space
Biosciences
NASA AMES RESEARCH CENTER



Unloading In Space



Research on these pioneering missions, aboard the Shuttle and currently the ISS have provided groundbreaking data illuminating the deleterious biological response of bone to mechanical unloading.

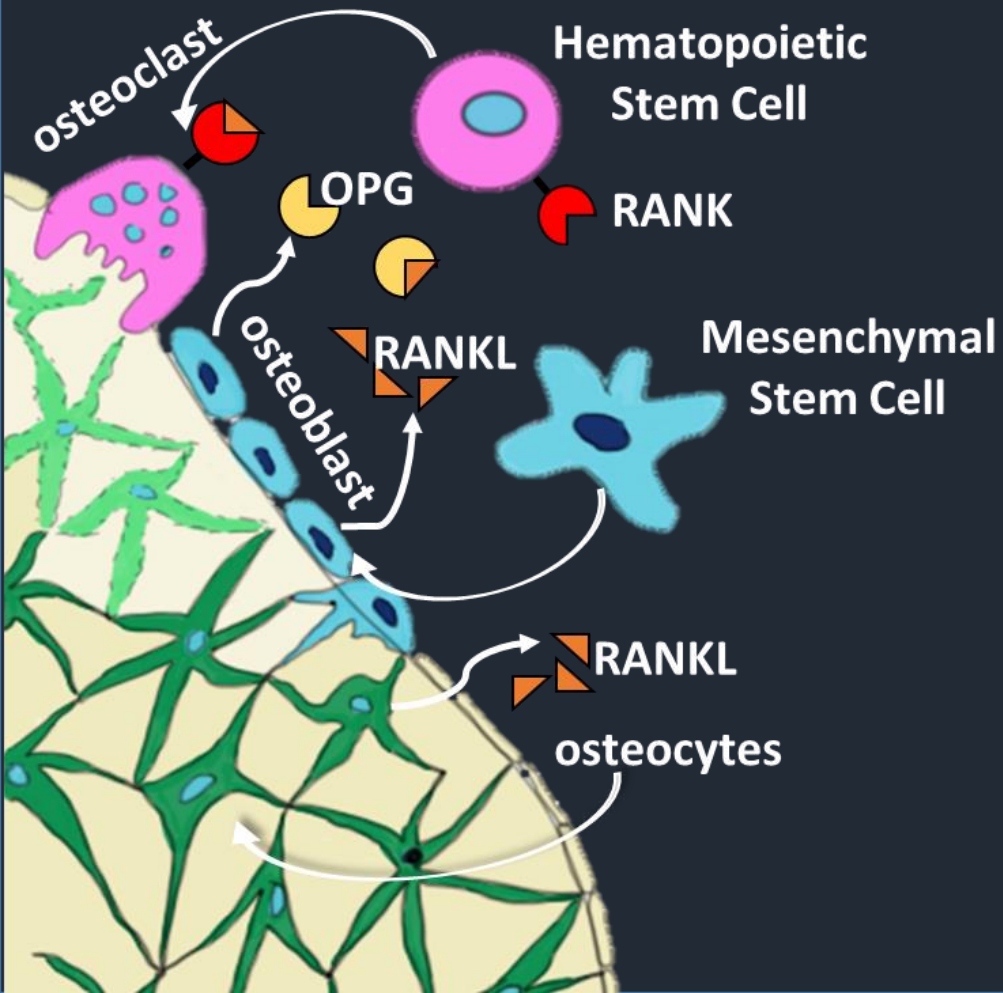


Even Hollywood is fascinated with Unloading



Balancing Act

- Skeletal System Homeostasis



Active Osteoclasts
Bone Resorption

Active Osteoblasts
Bone Formation



- Unloading interrupts the balance between bone resorption and bone formation
- But is that the whole story?



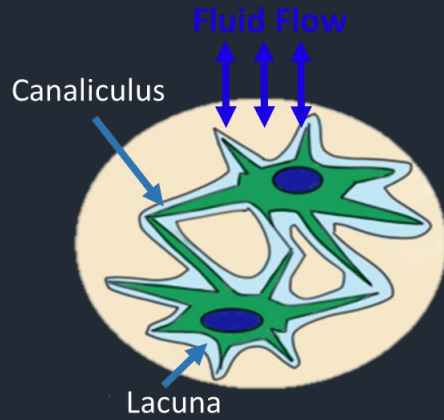
Our Investigation

Stimulation → Gap Junction Activity → cell-cell communication →
Regulation of Cell Activity

1. Are there regulatory actions of osteocytes only observable when direct communication via gap junctions with osteoblast are present in a physiologically relevant culture system?
2. Does the tissue analogous three dimensional orientation of the culture system and cellular population influence proliferative and recruitment phenotype expressions?

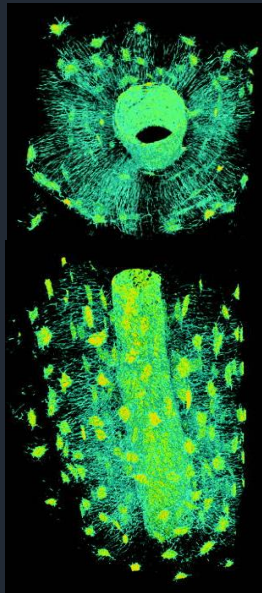


Physiologically Relevant Osteocyte/Osteoblast Organization

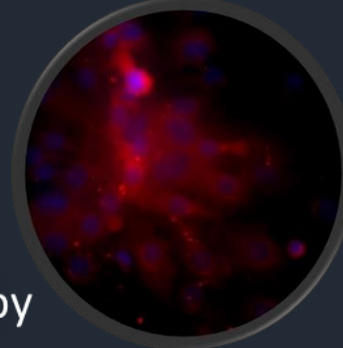


Osteon

Longitudinal
Compressive Load



Pacureanu, Alexandra, et al. "Nanoscale imaging of the bone cell network with synchrotron X-ray tomography: optimization of acquisition setup." *Medical physics* 39.4 (2012): 2229-2238.

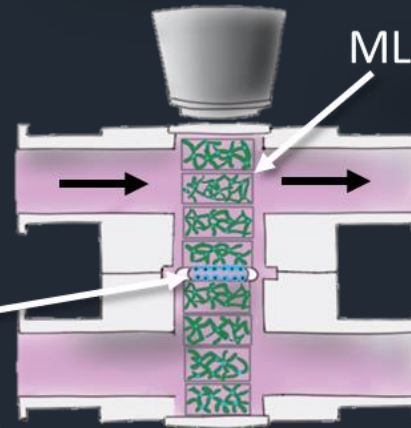


Microscopy

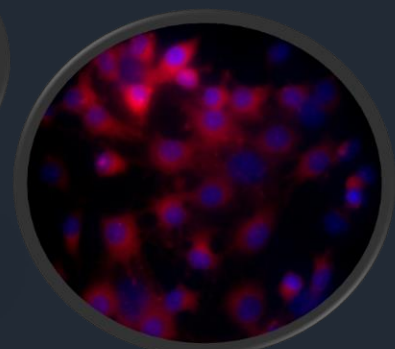
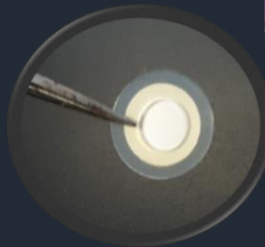


Pulsatile
Fluid flow

MC3T3-E1



MLOY4

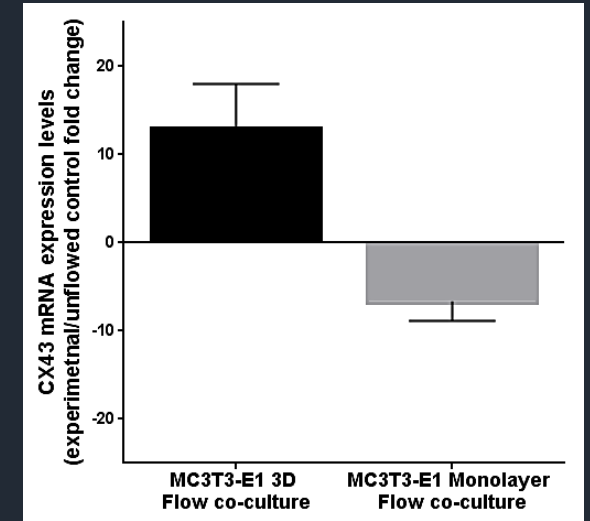
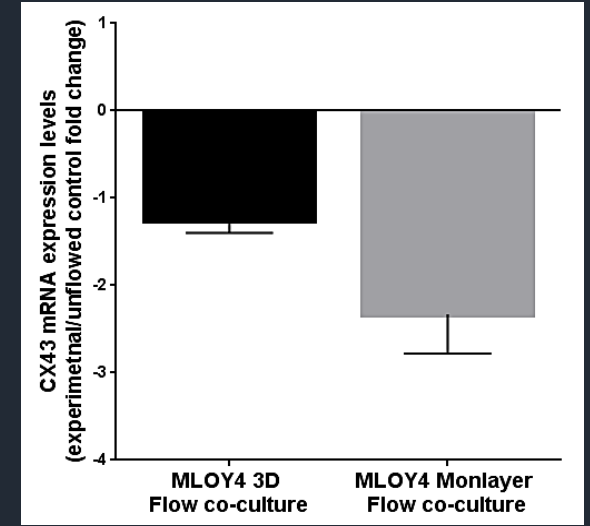
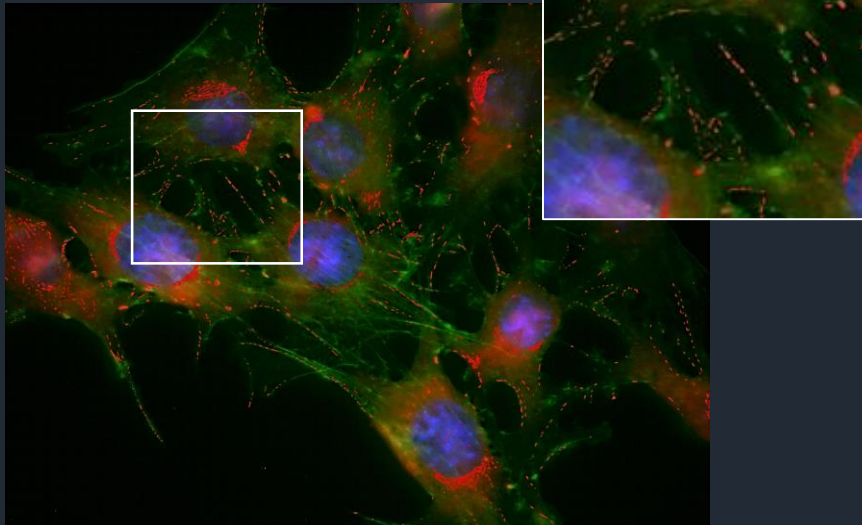
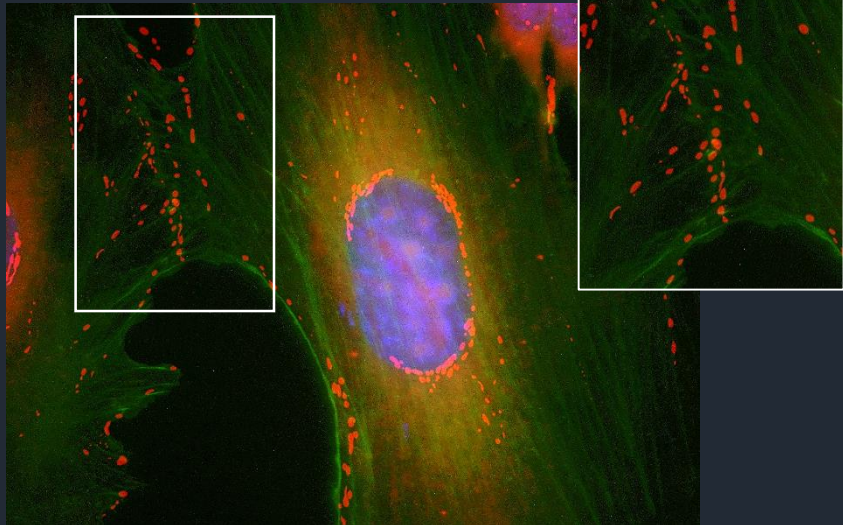
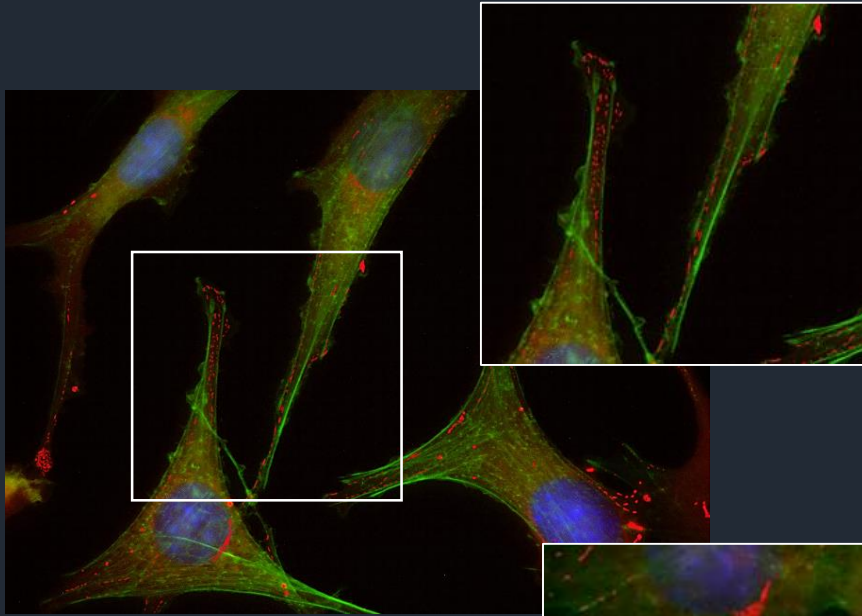
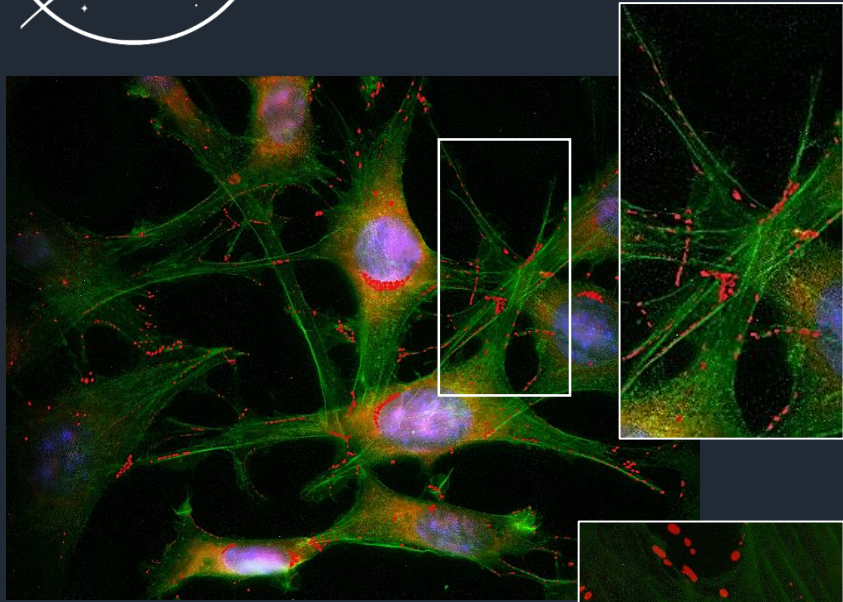


Environment Provides

- Cell-Cell contact enabled by adjacent culture
- Three dimensional osteon shape and osteocyte orientation and interconnectivity represented
- Flow only experienced by the osteocyte culture
- Imaging conducted without disturbing the culture

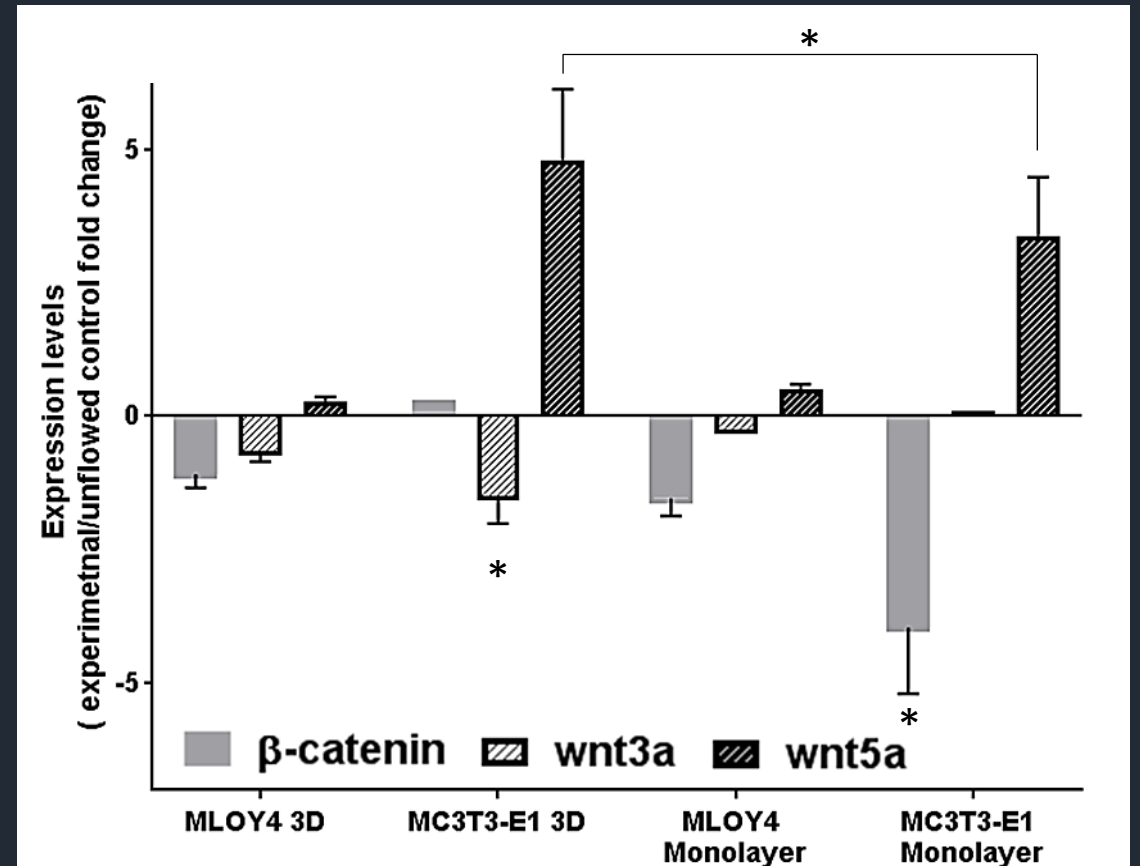
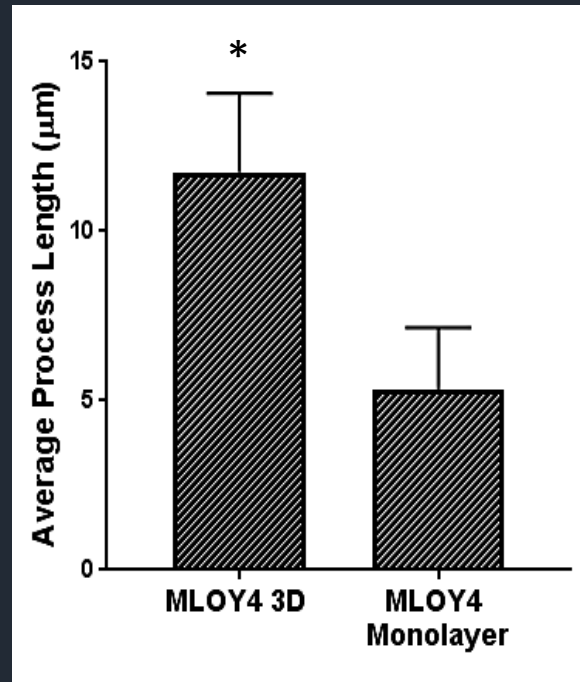
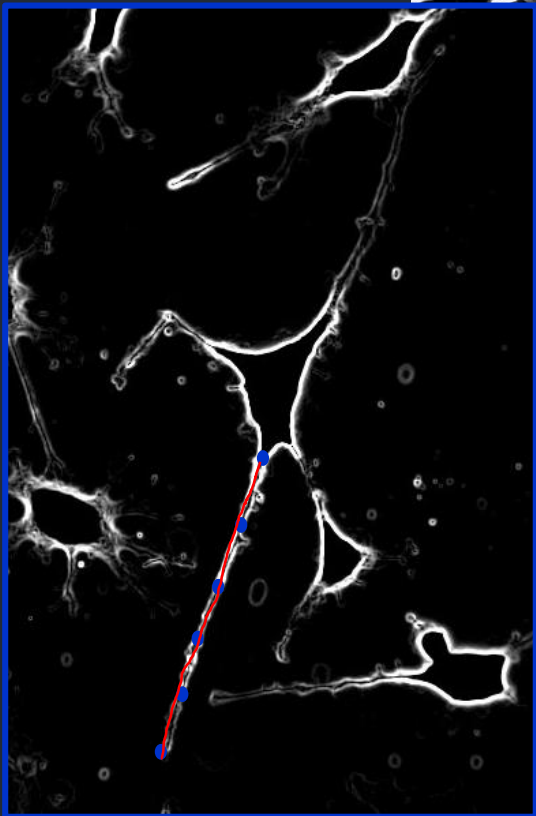
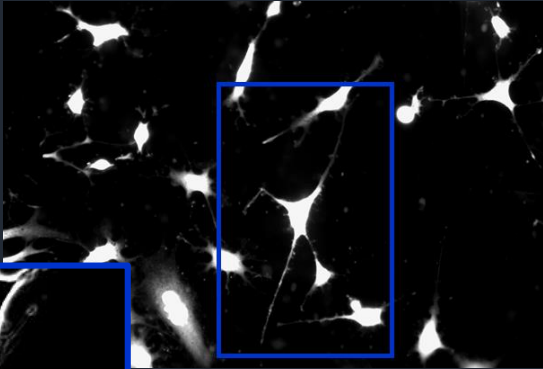


Connexin-43 Direct Communication Activity



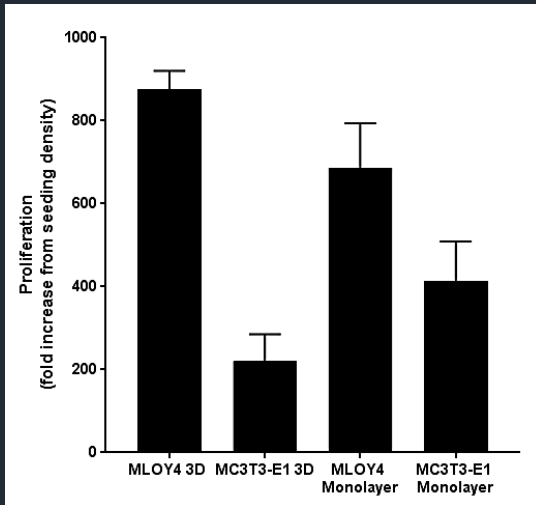
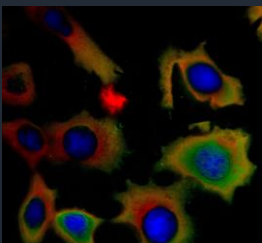
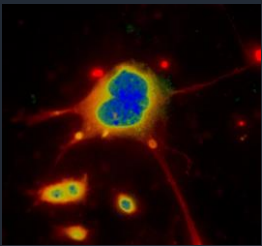


3D Organization effects on Example Osteogenic Signal Transduction Pathway



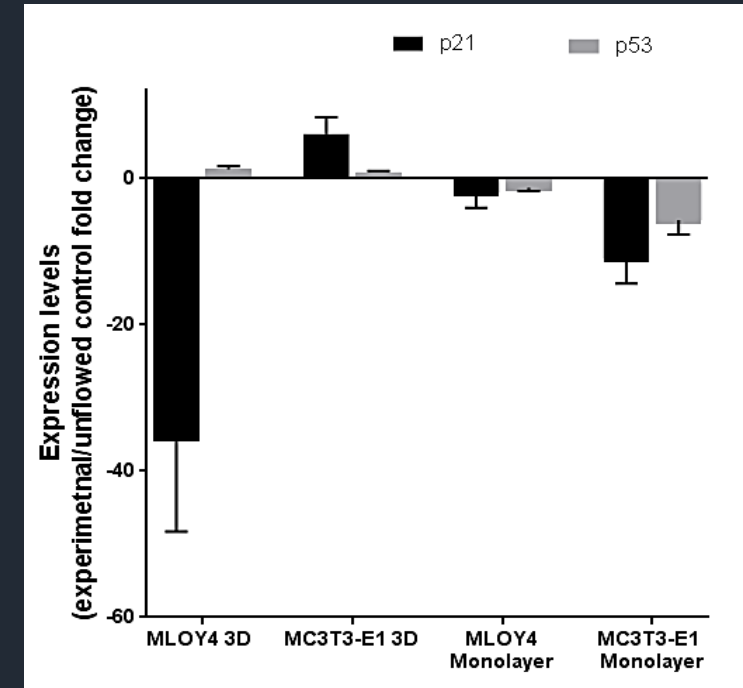


Proliferation Regulation and Osteoclastogenesis Niche Cell Recruitment

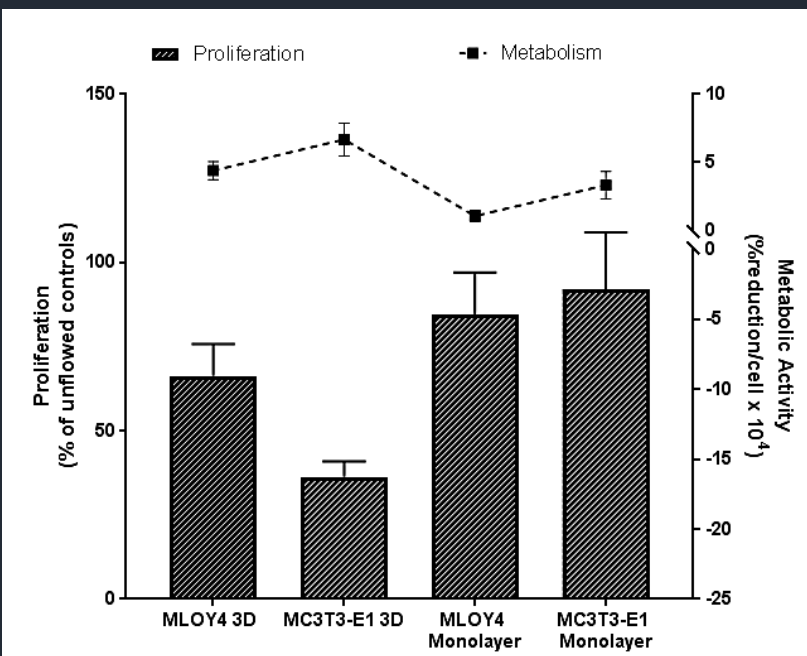


CX43
p21
Proliferation
RANKL/OPG

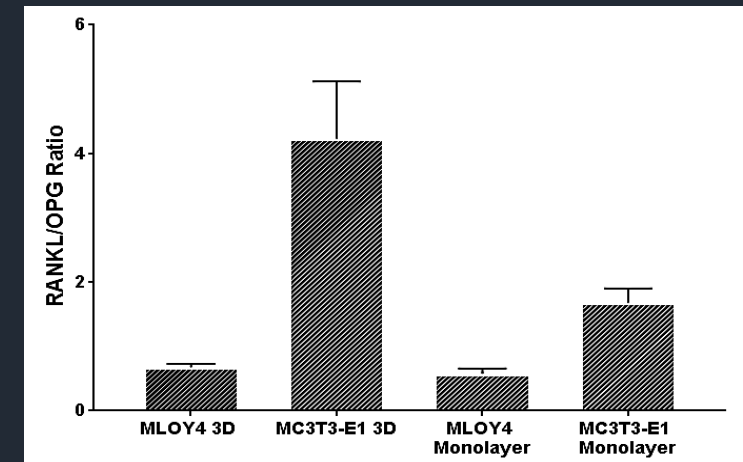
MLOY4 3D MC3T3-E1 3D



MLOY4 Monolayer MC3T3-E1 Monolayer



CX43
p21
Proliferation
RANKL/OPG

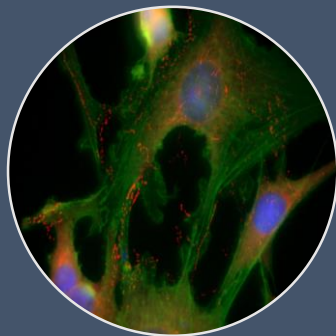




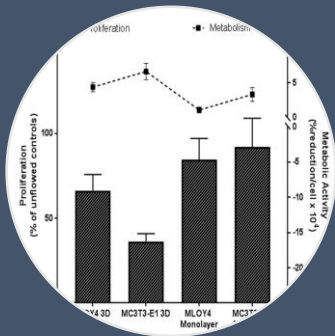
Direct Communication regulation may be propagating and summative



Physiologically relevant cell organization in co-culture.



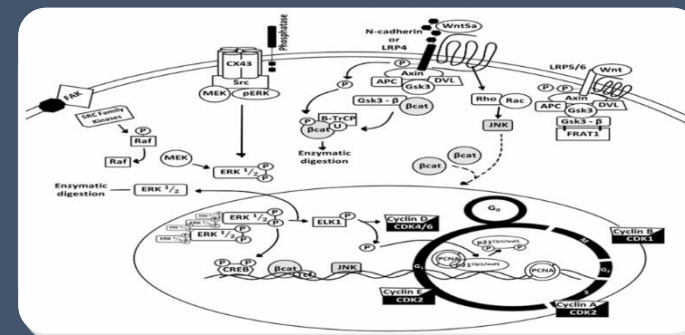
Importance of distribution of CX43 in response to mechanical loading.



Mechanical Regulation of Proliferative mechanisms via CX43 activity

Mechanical Regulation of molecular cell cycle behavior

Future Work



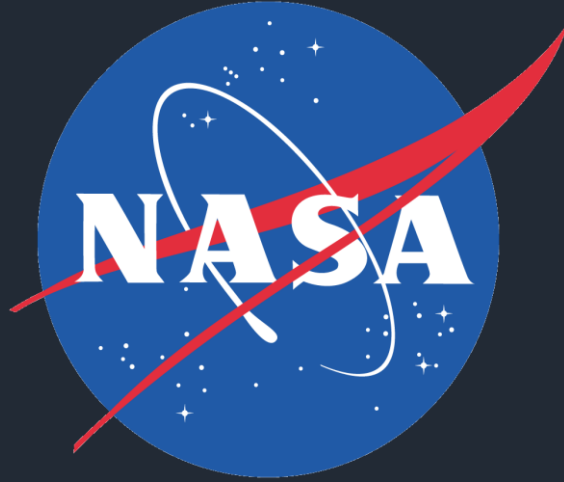
More fully defined osteoregulator and osteogenic molecular pathways

- Pathways of interest include
- Gap Junction Connexin 43
- Non-canonical Wnt (Wnt5a group – specifically Wnt11)
- PCNA (Proliferating cells nuclear antigen)



Acknowledgements

Eduardo Almeida, Ph.D.
Elizabeth Blaber, Ph.D.
Margareth Cheng-Campbell
Oscar Roque



NASA Space Biology Grant NNH14ZTT001N-0062
E. Blaber and NNH14ZTT001N-003 to E. Almeida



NASA Postdoctoral Program

