



**NASA Goddard Earth Sciences
Data and Information Services Center
(GES DISC)**

**Data Tips: Learn how to
Discover, Access and Analyze
NASA GES DISC data**

Jennifer Wei

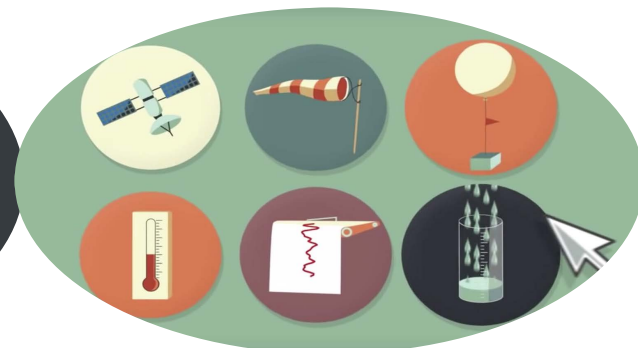
2018 AGU



GES DISC Earth Science Data & Challenges

Data Producers

Data Users



Sciences

Atmospheric
Composition

Global Water &
Energy Cycles

Climate
Variability

Weather

Carbon Cycles

Data

Satellite
In Situ
Model
Aircraft

Ingest

Archive

Preservation

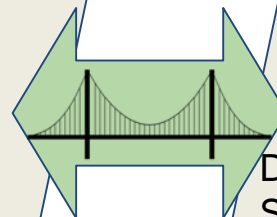
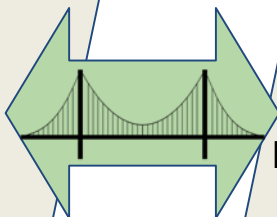
Distribution

Services

Accessibility
Interoperability
Usability

Downloading
Subsetting
Reprojection
Visualization

User Services





Explore...

Data Collections ▾ Enter search (e.g., rainfall, GPM, TRMM_3B42) [Calendar] [Bookmarks] [Search]

Browse Data by Category ▾

Data Collections ▾

Data Collections

Data Documentation

Alerts

FAQs

Glossary

How-To's

Image Gallery

News

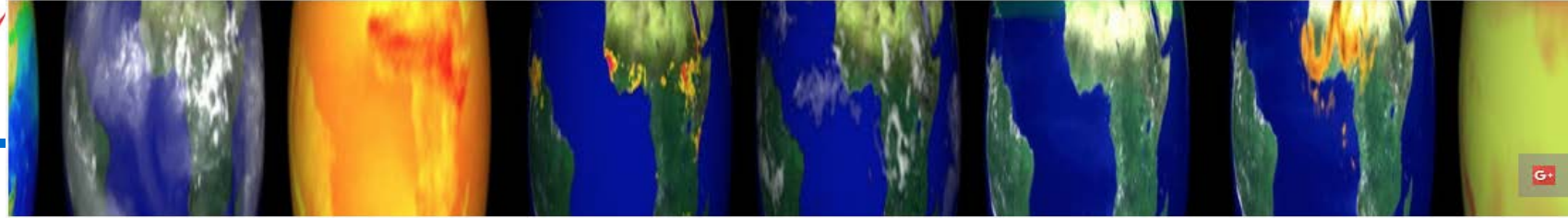
Tools

Explore with *search* capability

- Data: over 1200 collections
- Data Documentation:
 - ATBD, ReadMe, PI Publication, etc
- Alerts
- FAQs
- Glossary
- News:
 - ~ 550 articles, growing continually
- How-To's:
 - ~ 53 resources, growing continually
- Tools:
 - Giovanni, Subsetters, OPeNDAP, WCS/WMS, etc



Use 'NASA GE
DISC' in any
searching
engine

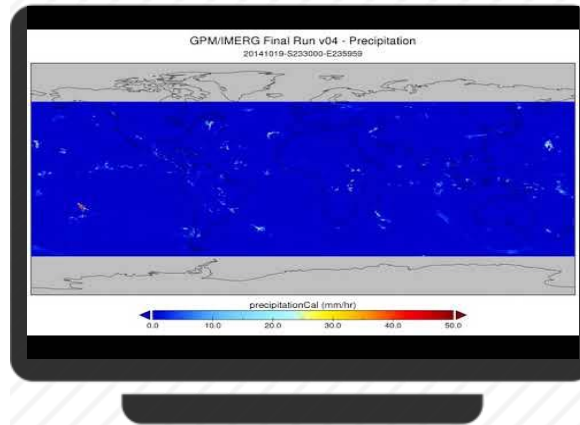


NASAGESDISC

776 subscribers

SUBSCRIBE 776

"Refined" Data Set Searching with the NASA GES DISC Web site



Open an Excel spreadsheet, and click the Data tab. Click "From Text" to start the text import process. Select the text data file to import. In the first import step, "Delimited" is the default option. Click "Next >".



How to use GES DISC website



How to access NASA GPM data



How to import data into Excel



Analyze California Fire with GES DISC data & tools



Carbon Monoxide and Aerosol from Satellites and MERRA-2 California Fire, July 28 2018

Meteorology and Land Surface Conditions Before the Fire event

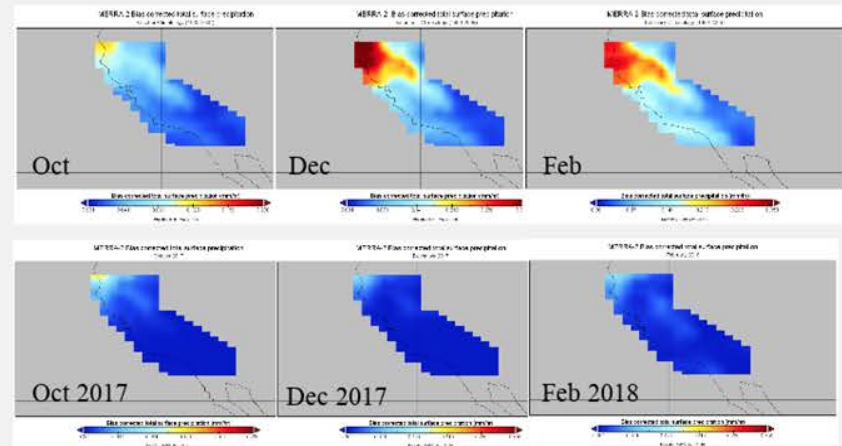
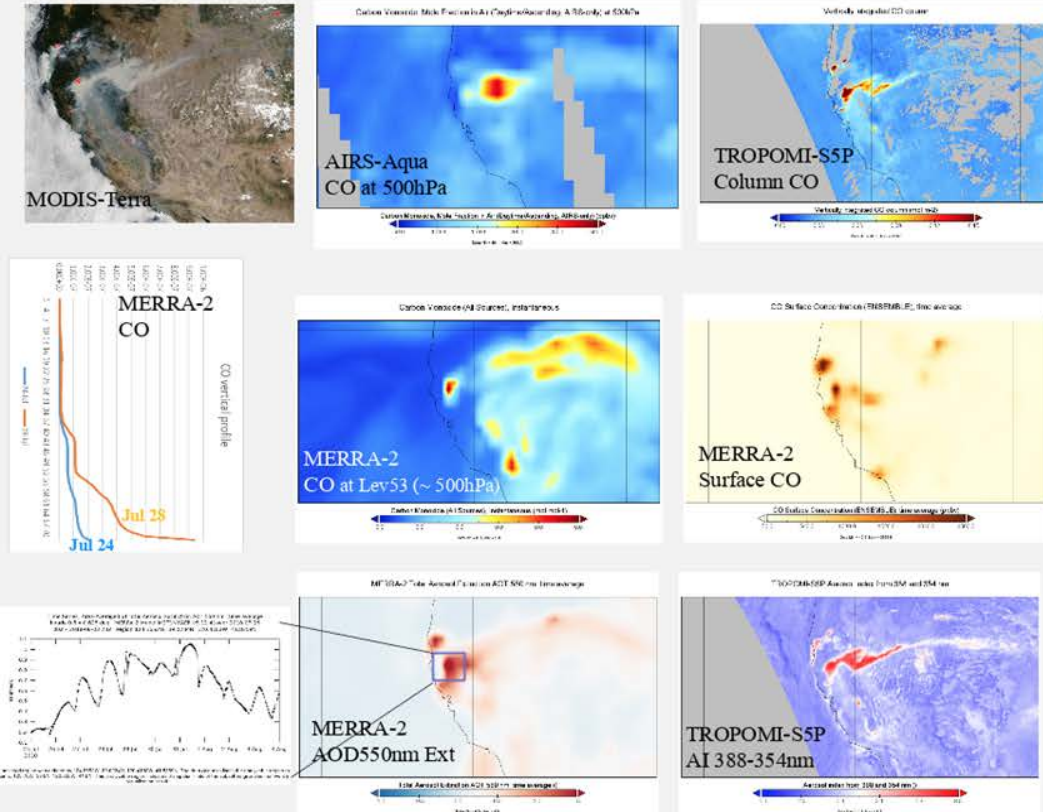


Fig.2 Images are monthly precipitation from MERRA-2, showing that the precipitation during 2017-2018 raining season is much below the climatology.



Fig.3 Time series of monthly soil moisture at root zone from NLDAS_NOAH over northern California (-124.0,38.9,-120.3,41.5) from Aug 2017 to Jul 2018 (Red line) and corresponding monthly Climatology

Fig.1 Images demonstrated the large scale elevated Carbon Monoxide (CO) and aerosols observed from satellite (AIRS/Aqua and TROPOMI/Sentinel-5P) and model assimilated data from MERRA-2 during a California Fire event on July 28 2018. The true color image is from MODIS-Terra.

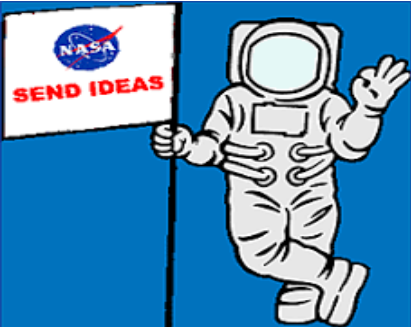



How-To's

Download

Case Study

Visualization



- Videos on **You Tube** : subscribe “NASAGESDISC”
- Twitter  : @NASA_GESDISC, @NASA_Giovanni
- How-To's

Download

Case Study

Visualization

- Feedback: 
- Help Desk: gsfc-help-disc@lists.nasa.gov