

# An Ocean-Atmosphere Simulation for Studying Air-Sea Interactions

Ehud Strobach<sup>1,2</sup>, Andrea Molod<sup>2</sup>, Atanas Trayanov<sup>2</sup>, William Putman<sup>2</sup>, Gael Forget<sup>3</sup>, Jean-Michel Campin<sup>3</sup>, Chris Hill<sup>3</sup>, Dimitris Menemenlis<sup>4</sup> and Patrick Heimbach<sup>5</sup>

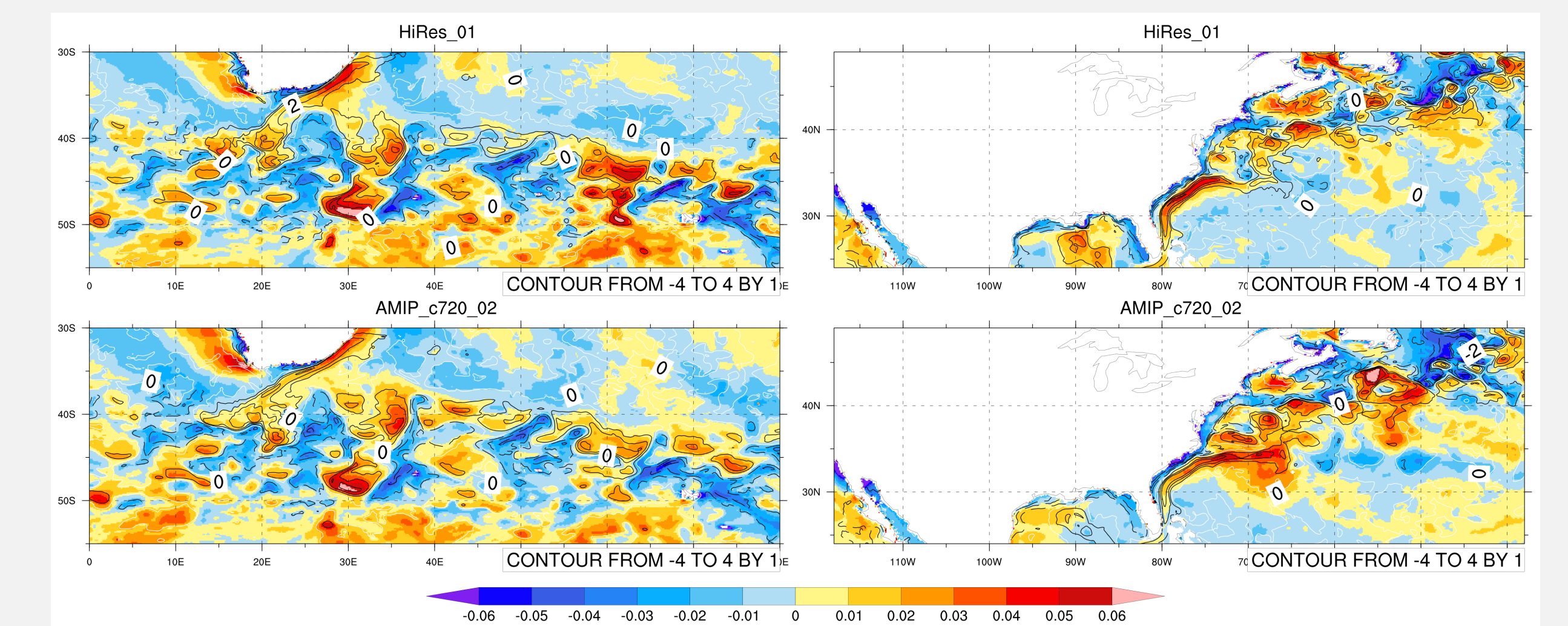
<sup>1</sup>University of Maryland, <sup>2</sup>NASA Goddard Space Flight Center, <sup>3</sup>Massachusetts Institute of Technology, <sup>4</sup>NASA Jet Propulsion Laboratory, <sup>5</sup>University of Texas at Austin



AS2.5/OS4.14

**1. Background:** Analysis of coarse-resolution, observation-based products generally finds negative correlation between Sea Surface Temperature (SST) and surface wind speed. This ocean-atmosphere interaction is interpreted as the ocean passively responding to wind-induced latent and sensible heat fluxes. For oceanic mesoscales, however, observations show that wind speed is stronger over warmer ocean and weaker over cooler ocean. The explanation for this is one-way feedback between SST anomalies and Planetary Boundary Layer (PBL) instability. Positive SST anomalies increase PBL instability, which results in transfer of momentum from the upper levels to the surface.

**Is there a governing two-way feedback mechanism between the atmosphere and the ocean?**



Two-month averages (Feb-Mar, 2012) of spatially high-pass-filtered sea surface temperature (SST) overlaid as contours on spatially high-pass-filtered wind stress

## 2. The coupled Model

Atmosphere – GEOS:

- Horizontal grid type – Cubed sphere, 1/8° X1/8°
- Vertical grid type – hybrid sigma-pressure, 72 levels

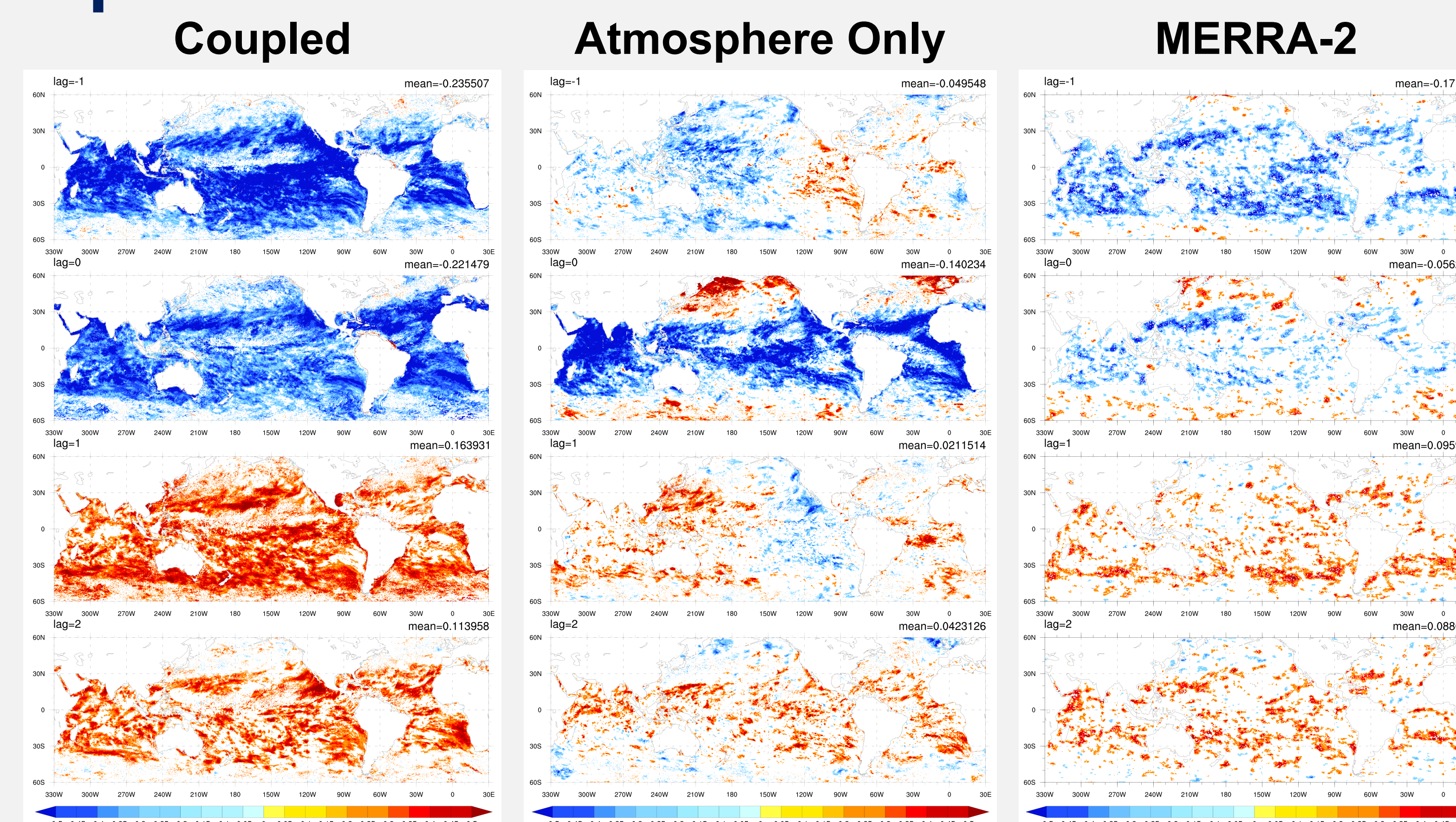
Ocean – MITgcm

- Horizontal grid type – Lat-Lon-Cap, 1/12° X1/12°
- Vertical grid type – z\* rescaled height vertical coordinate, 90 levels

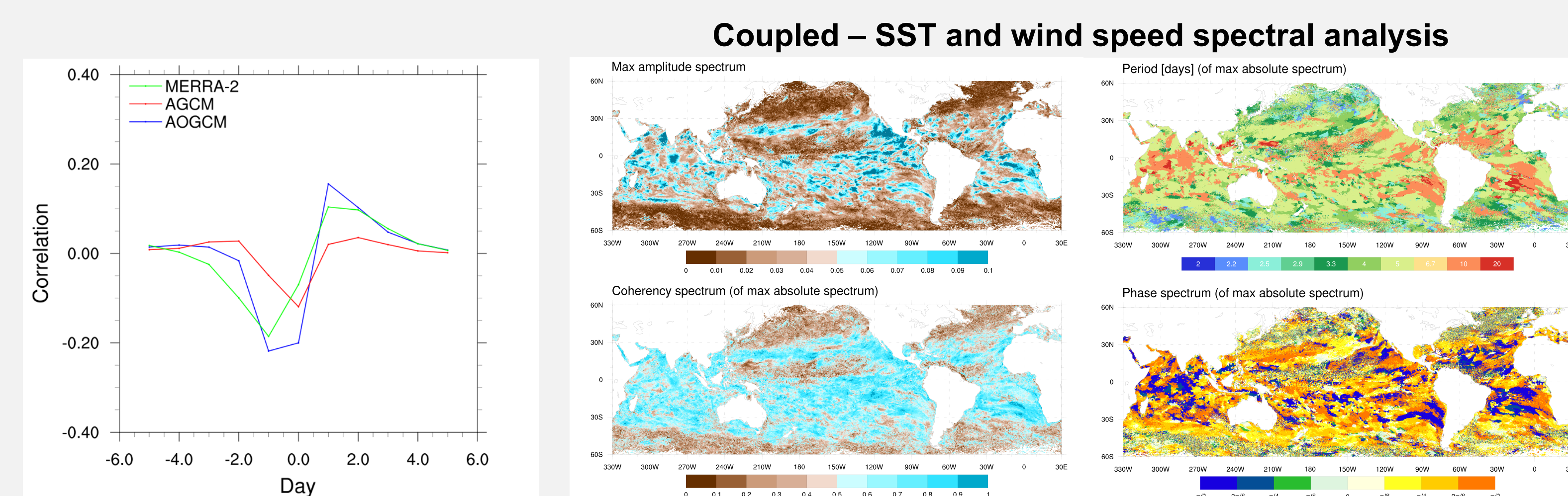
## 3. Experiments

1. Atmosphere Only – GEOS (AGCM)
  - Feb, 9 – Apr 9, 2012
  - Forcing: SST and ice fraction from ocean only equivalent experiment.
  - Initial conditions: MERRA-2
2. Coupled – GEOS-MITgcm (AOGCM)
  - Feb, 9 – Apr 9, 2012
  - Ocean initial conditions: from run 1
  - Atmospheric initial conditions: MERRA-2 (same as the run 1)

## 4. Correlation between daily SST and wind speed tendencies



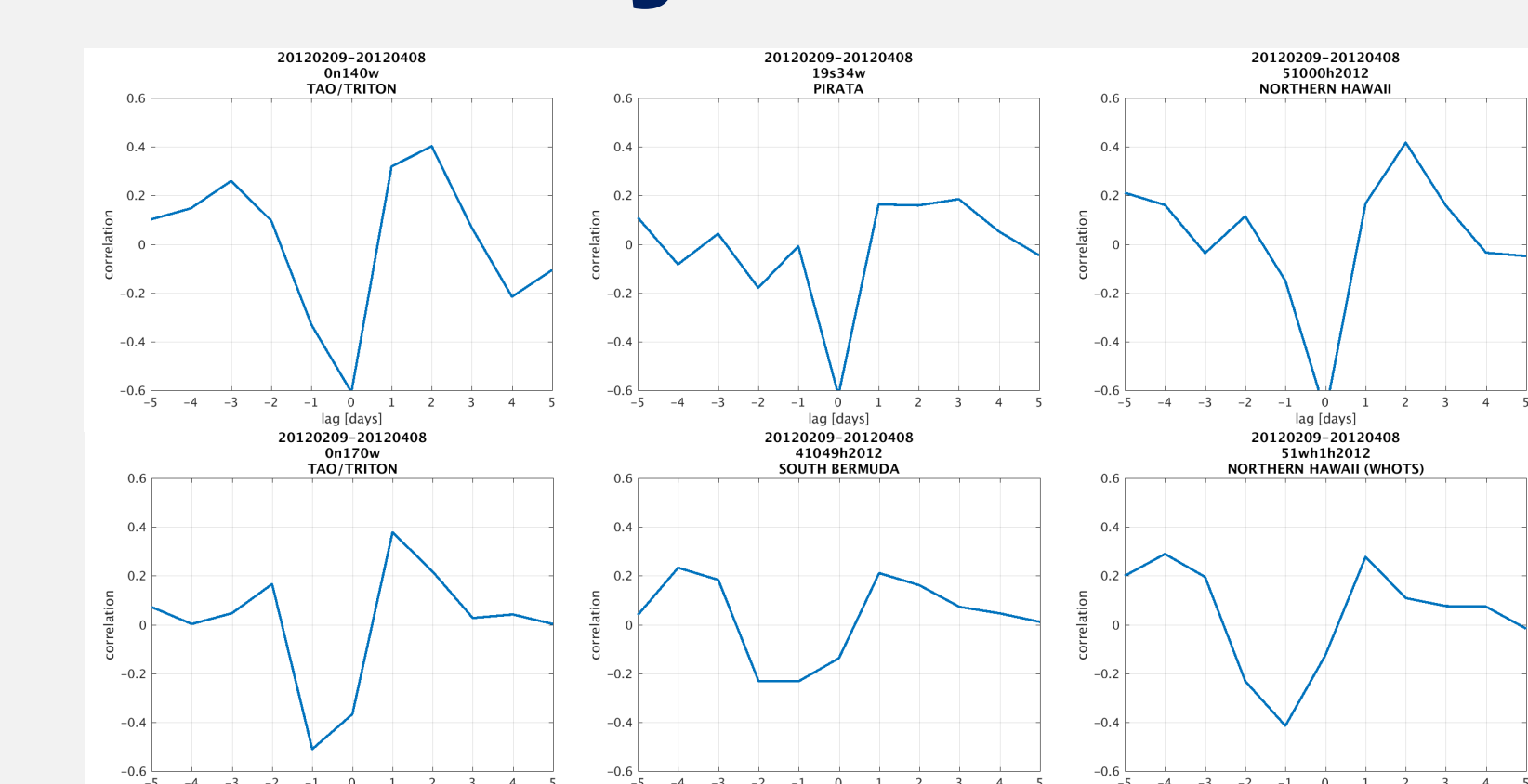
Lagged correlations between SST and wind speed for -1,0,1 and 2 days for the AOGCM (left), AGCM (middle) and MERRA-2 (right). Positive lag corresponds to SST leading the wind speed



Global lagged correlations between SST and wind speed. Maximum absolute spectrum (top left) and the coherency (bottom left), Frequency (top right) and phase (bottom right) of the maximum absolute spectrum.

**SST-wind correlation indicates a 3-5 day cycle**

## 5. Buoys



Lagged correlations between observed daily SST and wind speed tendencies for 6 buoys

**A 3-5 days cycle is also found in buoys**

## 6. Suggested mechanism

