

Compositional and microstructural effects in the protection of SiC components in water vapor

Benjamin Kowalski, Bryan Harder

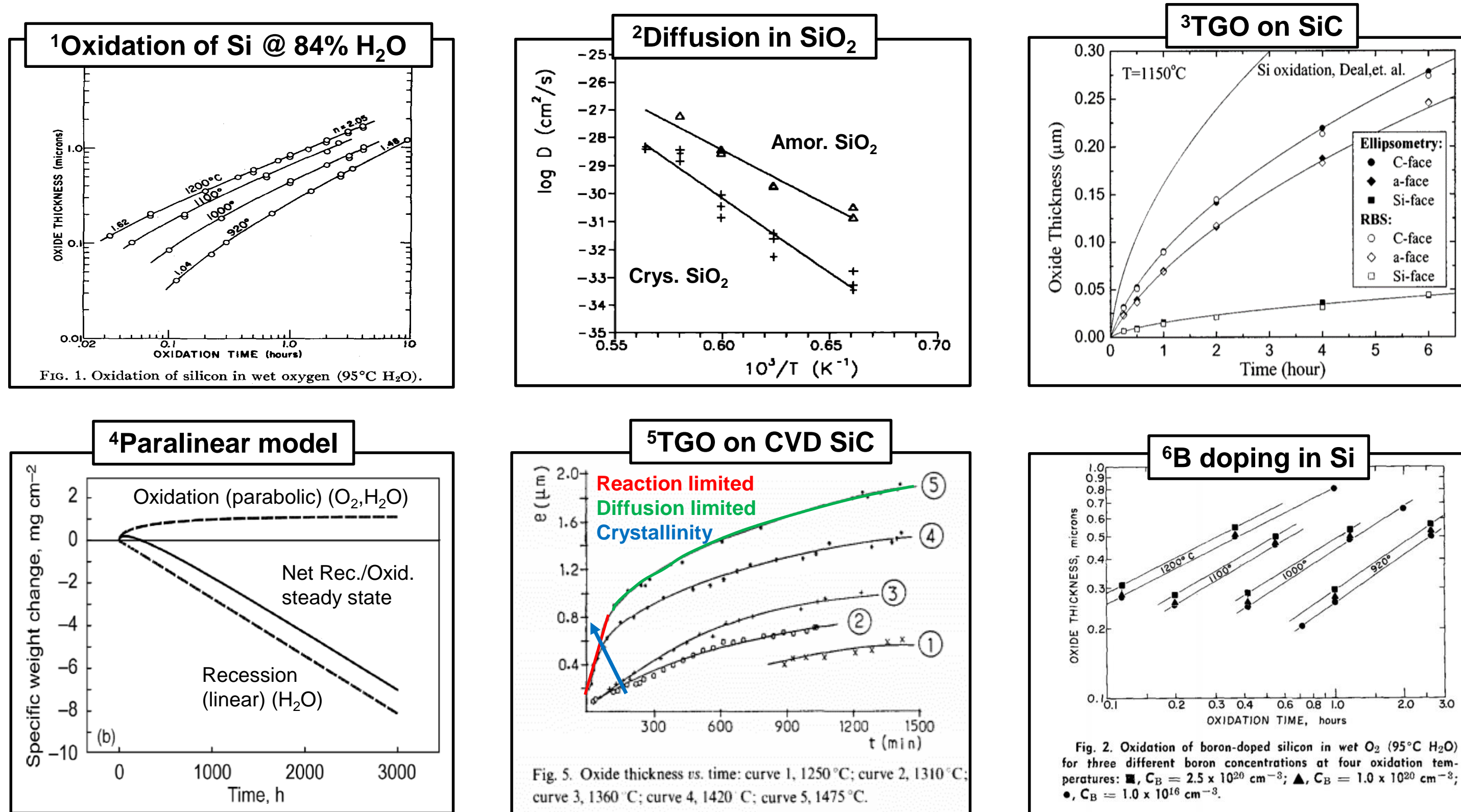
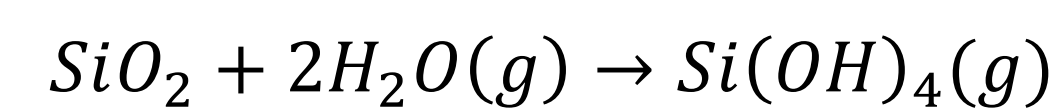
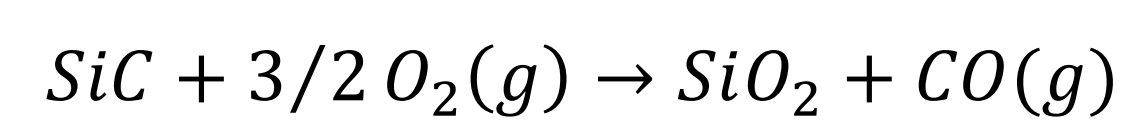
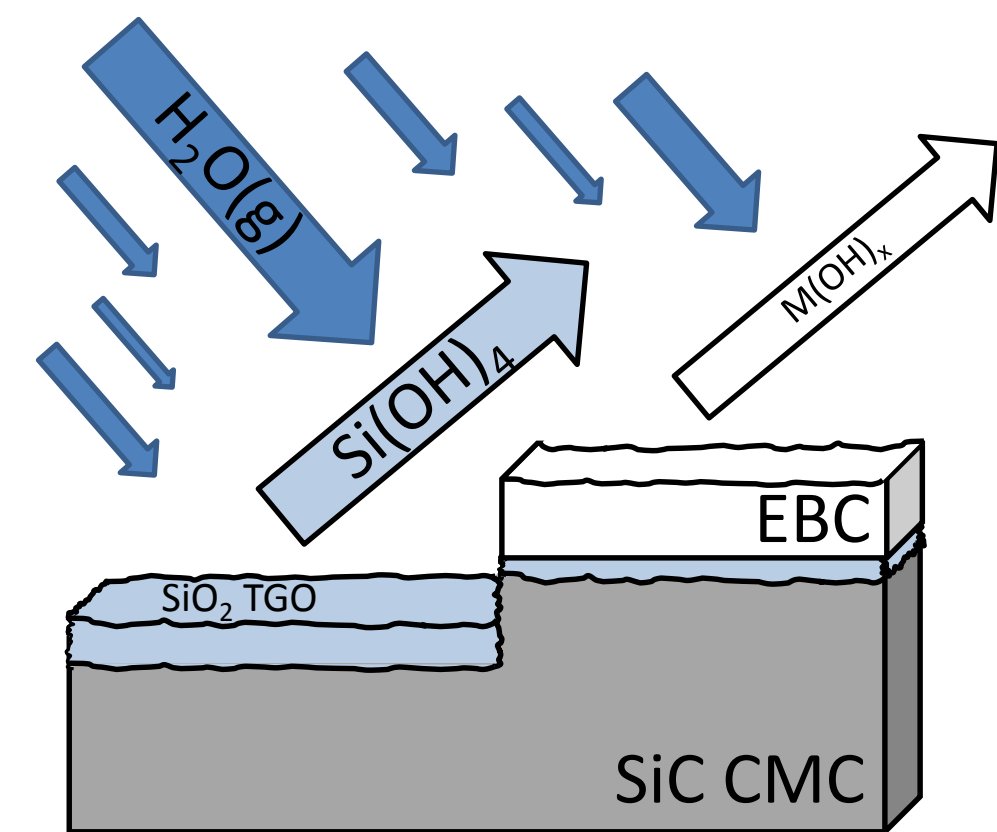
NASA Glenn Research Center, Cleveland, OH 44135, USA

Motivation:

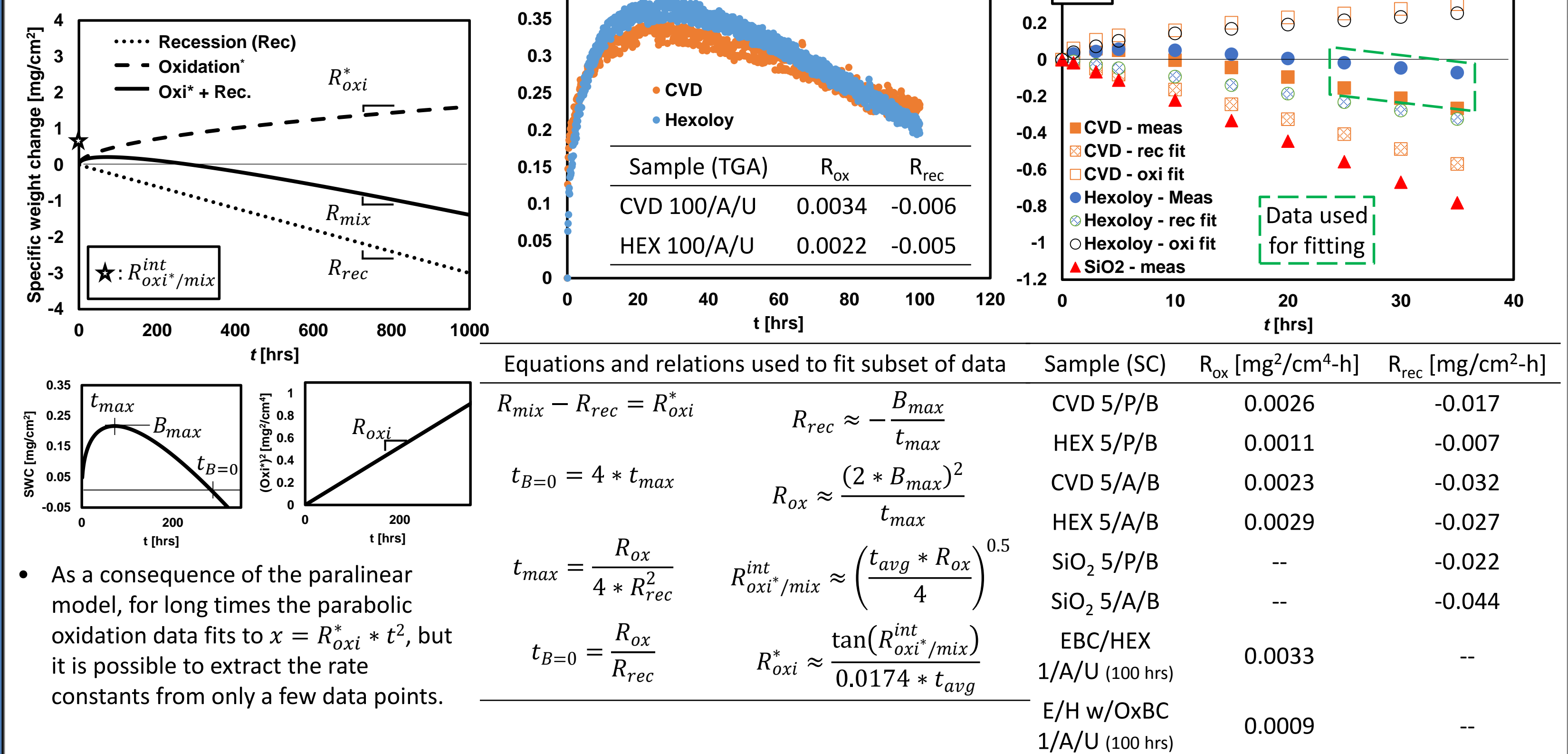
To realize greater efficiencies in gas turbine engines, it is necessary to increase the operating temperature. To that end, silicon-based ceramics, composites, and coatings have shown great promise as replacements for current hot-stage alloy components of gas turbine engines. However, these Si-based materials are susceptible to a multitude of deleterious effects at elevated temperature. Water vapor plays a role in both the oxidation of the SiC ceramic-matrix composite (CMC) as well as the recession of the environmental barrier coating (EBC) meant to protect the underlying substrate. It is necessary to understand how the interaction with water vapor affects the life of both the CMC and EBC. This work primarily focuses on degradation of the CMC.

Background:

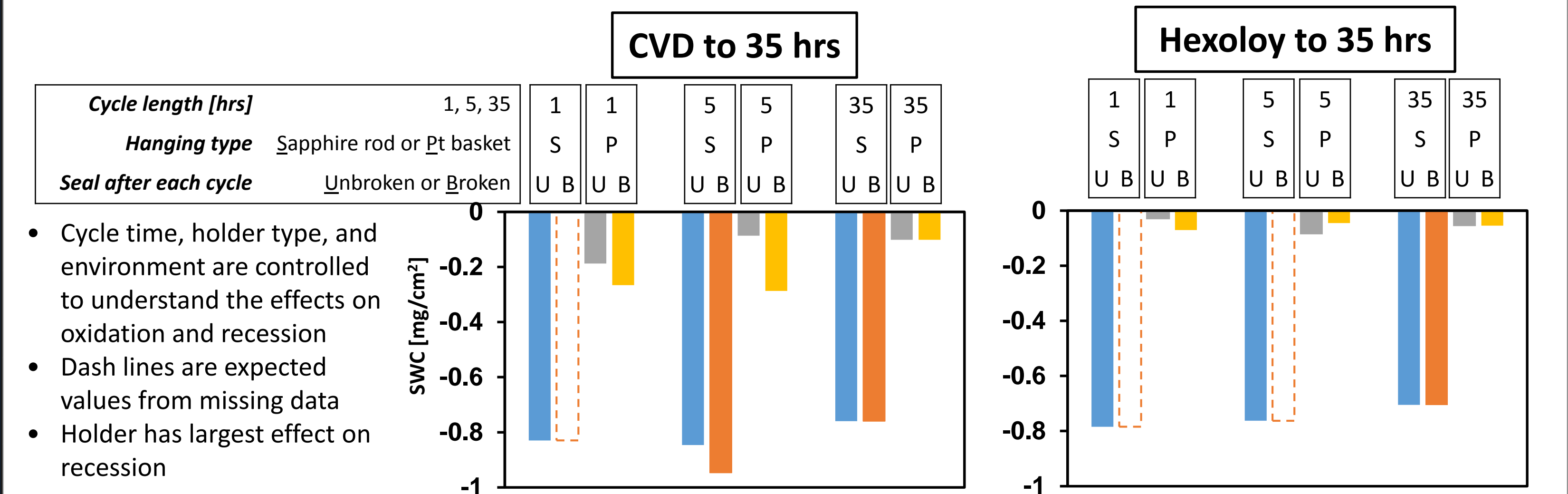
- Opila *et al* demonstrated that Si-based composites were vulnerable to recession by water vapor as depicted to the right with corresponding chemical equations.
- Oxidation and recession of SiC were described by a parilinear model (i.e. a combination of parabolic oxidation and linear recession as shown below.) with rates ascribed to each.
- These rates are affected by a multitude of factors, often overlapping, such as: diffusion rate, crystallinity, density, porosity, and doping among others, shown in graphs below.
- An EBC slows the rate of oxidation, but failure modes can appear due to the new interface that forms owing to chemical compatibility effects and thermal expansion mismatch.



Oxidation & Recession of SiC:

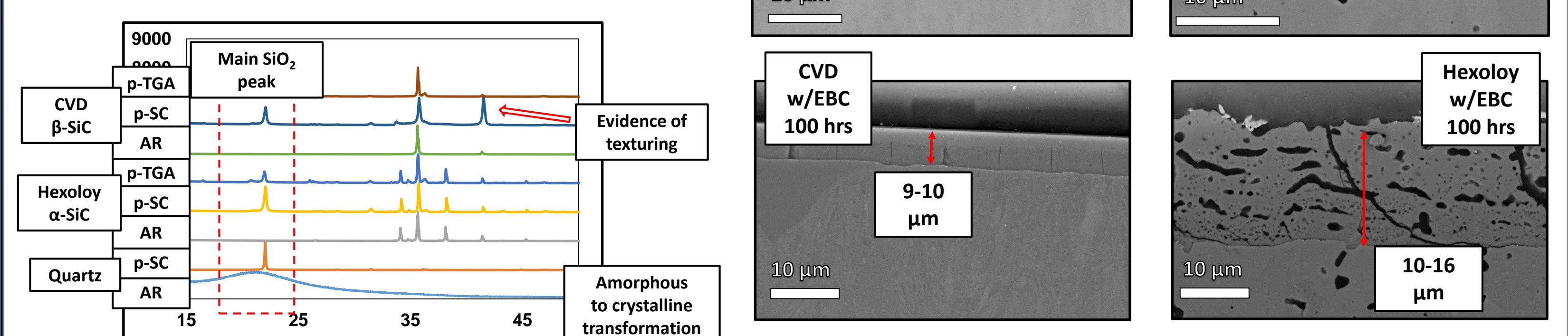


Effect of testing conditions in steam cycling:



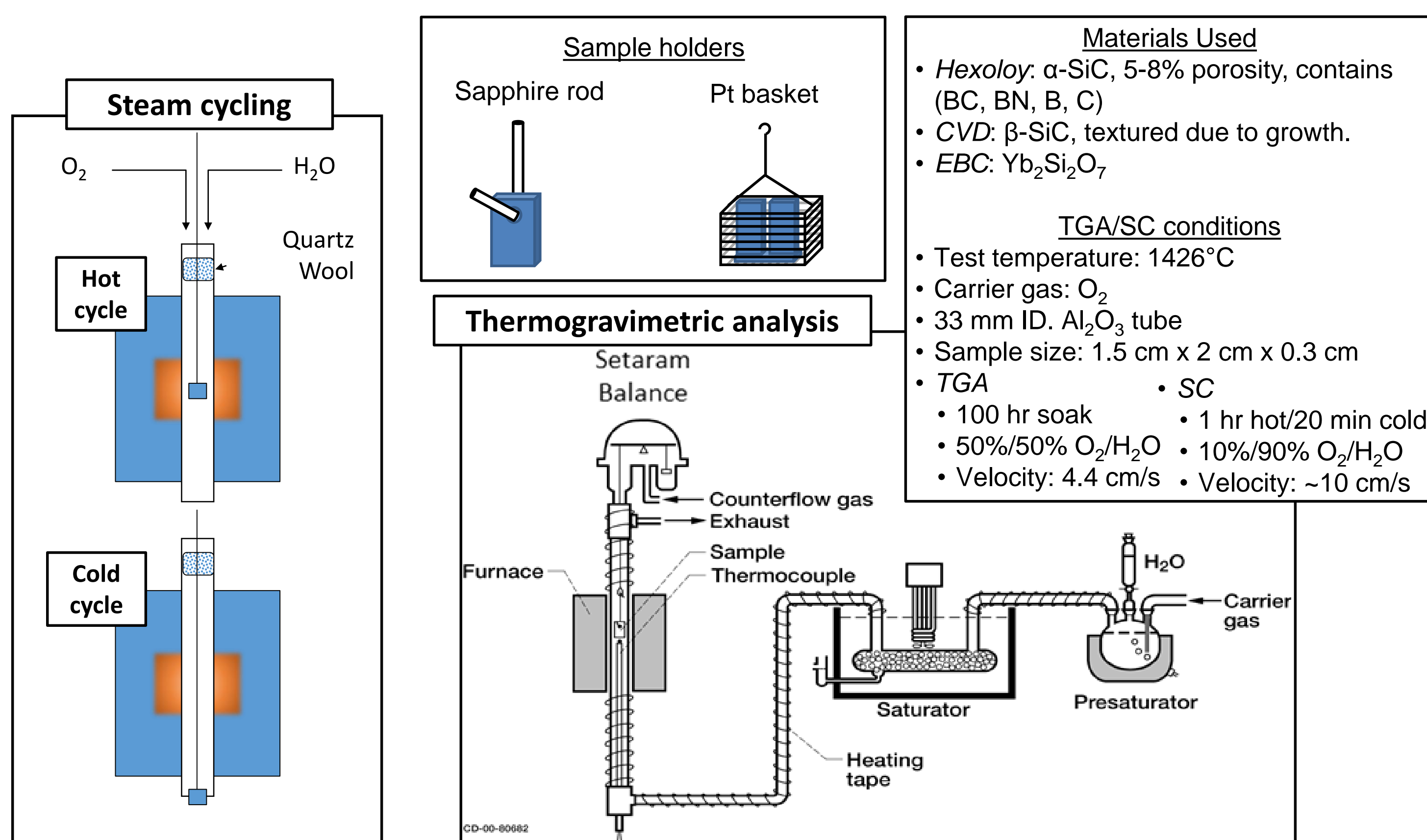
Structural analysis (X-ray diffraction and Scanning Electron Microscopy):

- XRD and SEM confirm the presence of the SiO₂ grown on the SiC surface.
- As expected, Hexoloy has a thicker TGO layer and a correspondingly higher intensity in XRD



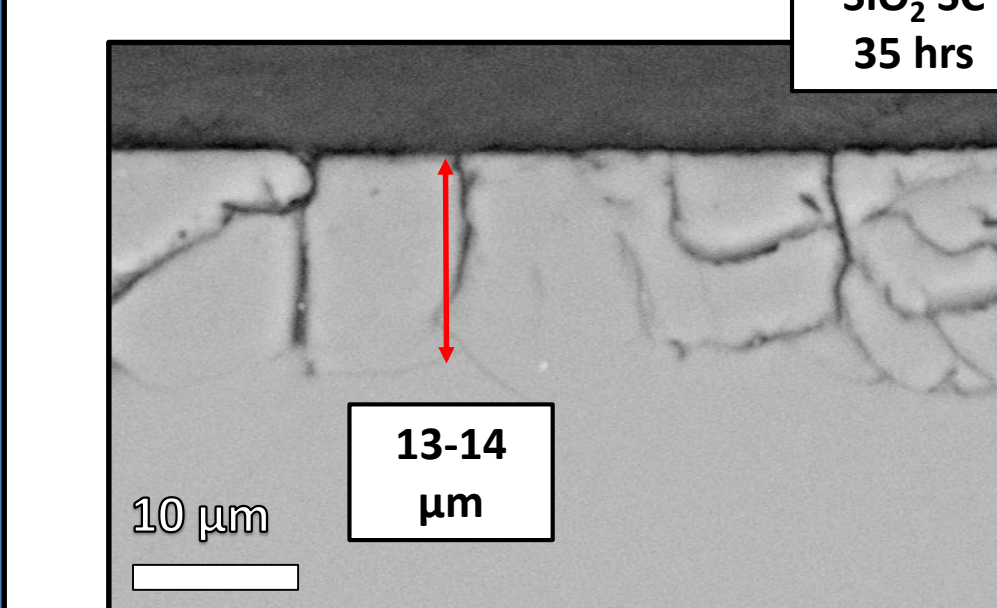
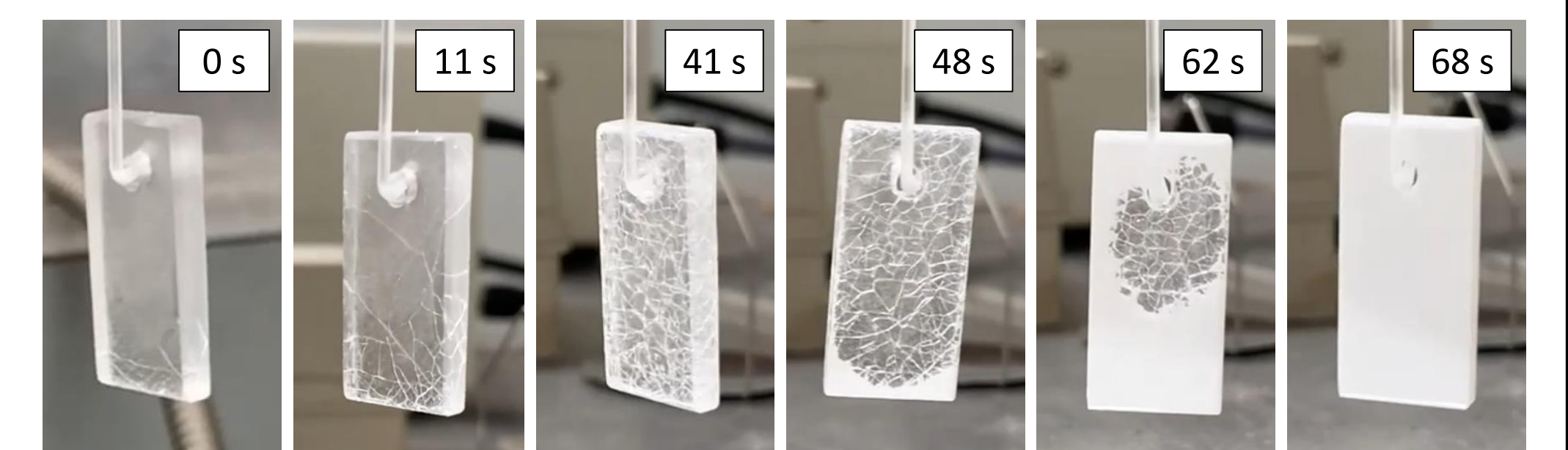
Experimental Setup:

- To understand the efficacy of the EBC as well as the influence of the material parameters in different SiC types, measurements of weight changes are performed *in situ* at a particular temperature (i.e. Thermogravimetric analysis (TGA)) or *ex situ* after temperature cycling (i.e. Steam cycling)



Diffusional effects:

- SiO₂ after 100 hrs at 1426 °C in 50/50 H₂O/O₂ in TGA to the right
- SiO₂ SEM after 35 hrs
- Amorphous until quenched
- Diffusion plays a role in crystallization as can be seen in the comparison between SC and TGA.



Conclusion:

- TGO growth and failure is complex
- Temperature cycling more closely resembles in use characteristics
- The choice of substrate, cycle time, sample holder all strongly affect the TGO growth rate through oxidation and recession; must be accounted for when reporting rates

References:

- Deal *et al.* – J. Appl. Phys. – (1965)
- Rodriguez-Viejo – J. Eur. Cer. Soc. – (1994)
- Song – J. Appl. Phys. – (2004)
- Opila *et al.* – Cer. Sci. & Tech. (2013)
- Sibieude – Thin Solid Films – (1991),
- Deal *et al.* – ECS – (1965)