



# The KSC Augmented/Virtual Reality Lab

**Charter:** To investigate the new XR technologies that are coming onto the market, learn how they work, determine their strengths and weaknesses, and recommend potential applications of these technologies to the work we do at KSC, processing spacecraft, launch delivery systems, and ground support equipment.

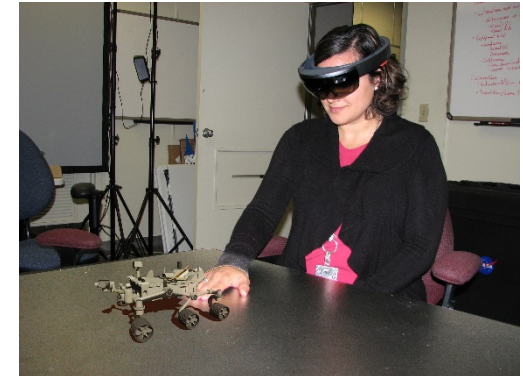




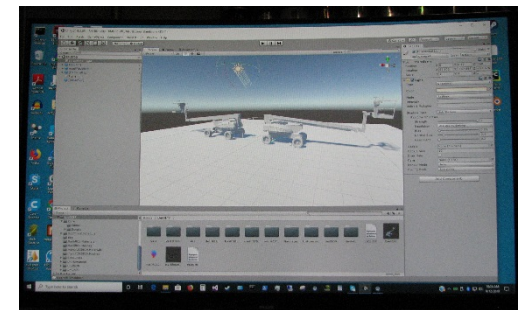
# MR: Virtual Control Panel



# AR: Virtual Rover



# VR: Rapid Model Import Tool





# Rapid Model Import Tool (RMIT)

- Goal: Import 3D CAD models, reduce file size by decimation and object removal while maintaining the fidelity of the original, then export the results to a format and size that are compatible with contemporary game development platforms such as Unity. Provide engineering personnel with models that can be viewed and interacted with on VR-ready laptops and desktops.

The slide is titled "KSC Augmented/Virtual Reality Lab An Insight Into AR/VR technologies" and "Rapid Model Importer Tool (RMIT)". It features the NASA logo and the IT-C1 Discovery logo. The slide is divided into several sections:

- Introduction:** Discusses the goal of the project to allow users to create 3D models of KSC assets and export them to a format and size that are compatible with contemporary game development platforms such as Unity. It mentions that the tool is designed to be used by engineering personnel who are not VR experts.
- One Proposed Solution:** Describes the tool's architecture, which includes a user interface for selecting and configuring models, a decimation and object removal process, and an export function that generates a Unity-compatible model.
- Conclusions:** States that the tool is designed to be used by engineering personnel who are not VR experts, and that it provides a way to create 3D models of KSC assets that can be used in AR/VR applications.

The slide also includes several images showing 3D models of KSC assets, such as a forklift and a crane, and a photo of a person using a VR headset to interact with a 3D model of a forklift.



# Rapid Model Import Tool (RMIT)

