



Connecting GPM data to Decision Makers: Applications and Outreach



Dalia Kirschbaum
*GPM Deputy Project
Scientist for
Applications*

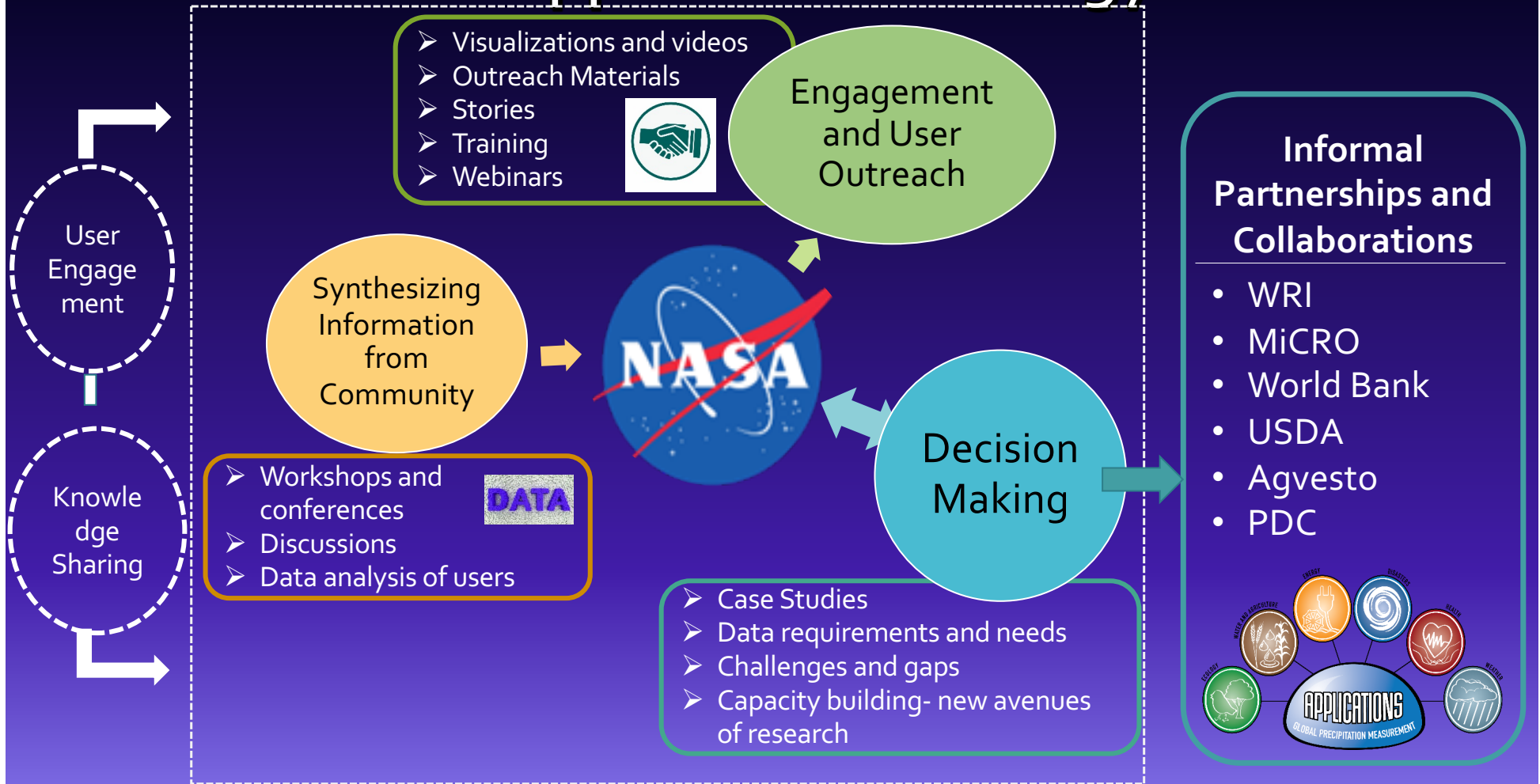
Andrea Portier
*GPM Applications
Coordinator*

Twitter: [NASA_Rain](#)
Facebook: [NASA.Rain](#)

Dalia.kirschbaum@nasa.gov

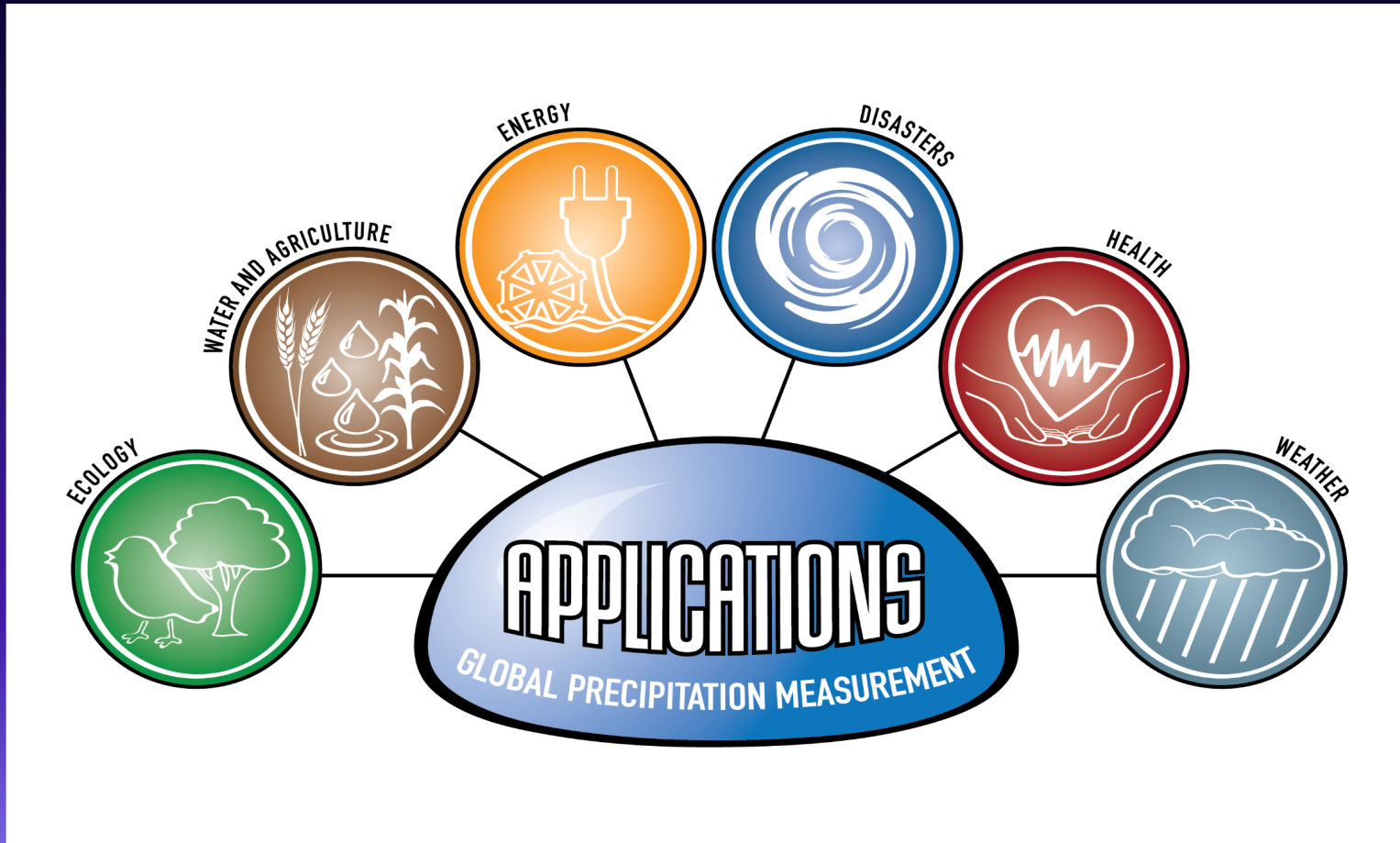
Andrea.m.portier@nasa.gov

GPM's Applications Strategy

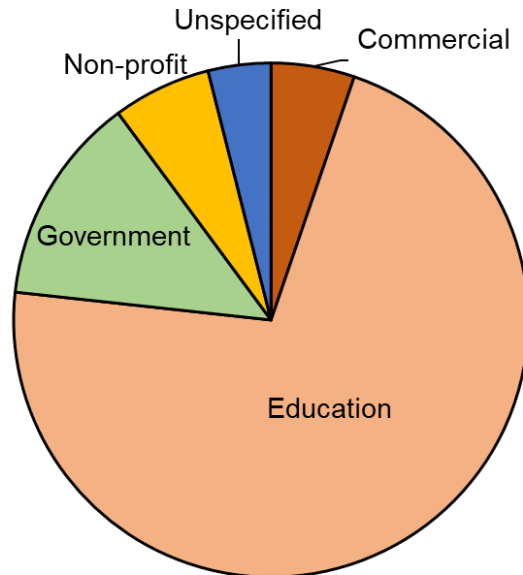




GPM Applications Areas



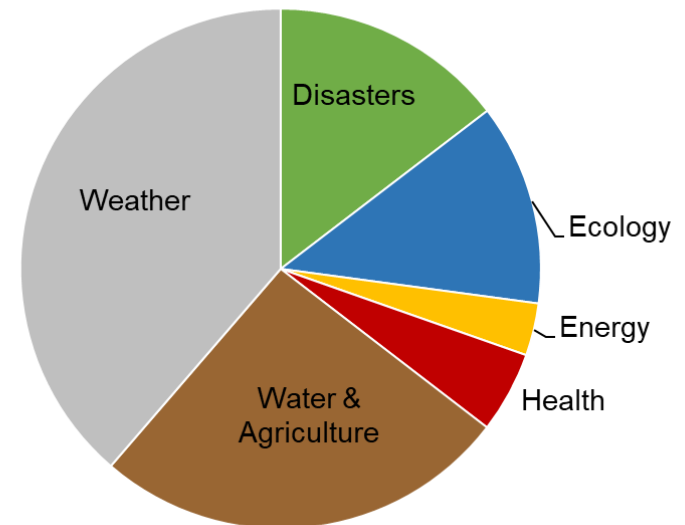
GPM Data Users by Sector



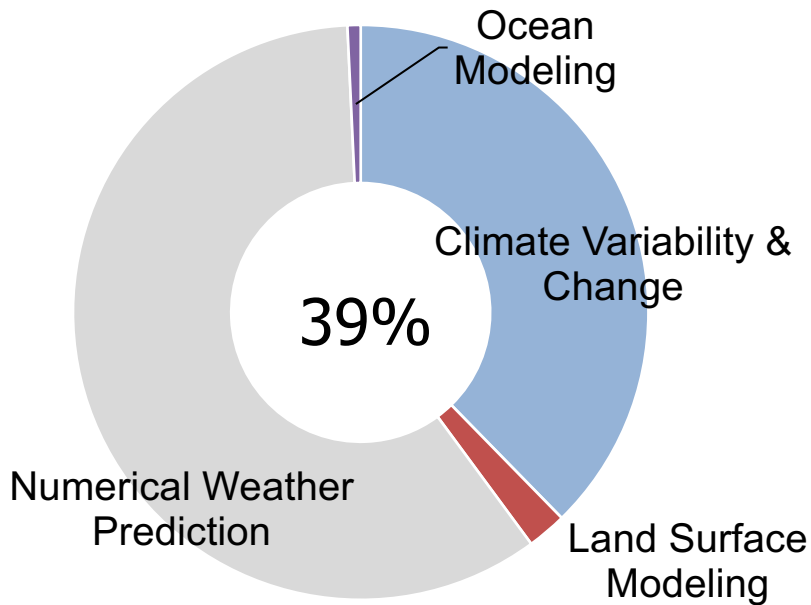
- On average ~1,000 unique users per month access GPM data and products (GDISC and PPS)
- E-mail, type of user, application area

Goal is to better understand the user community and reach into sectors that may not be well represented or better engage active groups

GPM User by Application Area

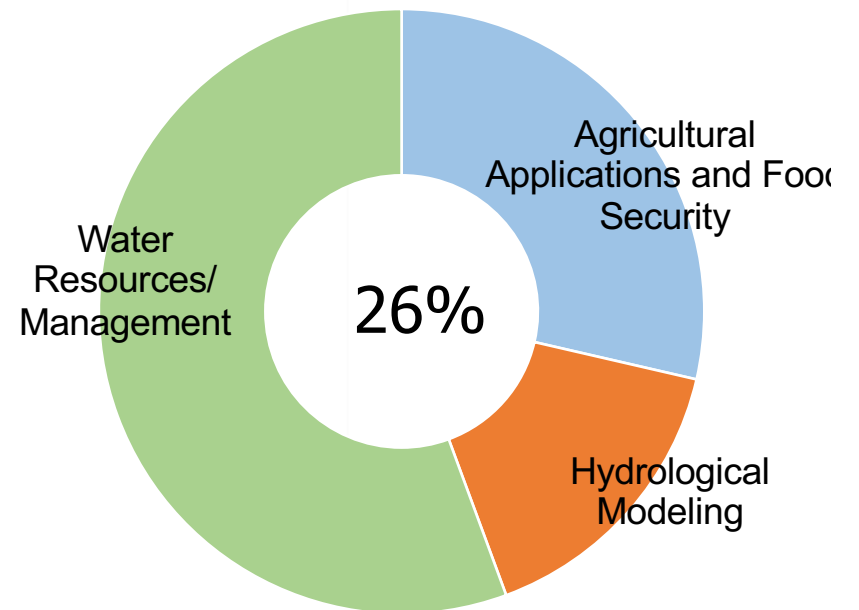


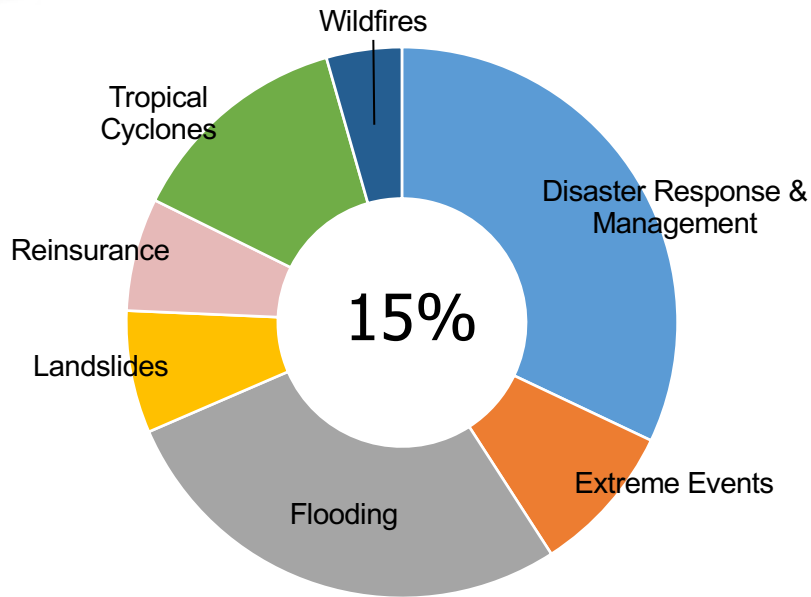
Over 85 highlights have been made to show how GPM is being used for applications



Weather, Climate, Modeling

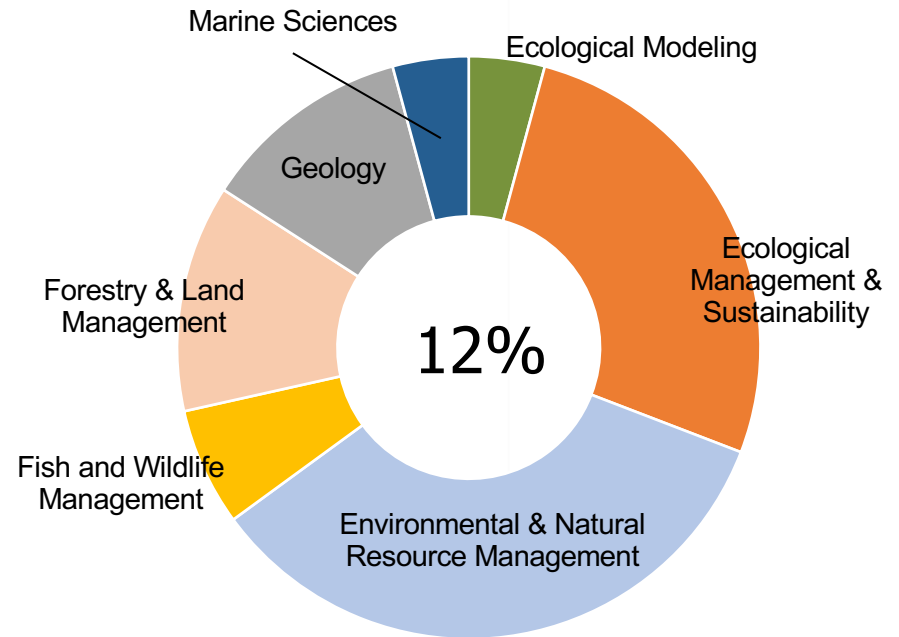
Water Resources, Agriculture, and Food Security





Disasters & Risk Management

Ecological Management



GPM Applications Examples

For all Applications Highlights please visit <https://pmm.nasa.gov>


To share an application with the GPM Team, please contact Andrea Portier!



Looking Inside Tropical Storm Lorenzo



GLOBAL PRECIPITATION MEASUREMENT

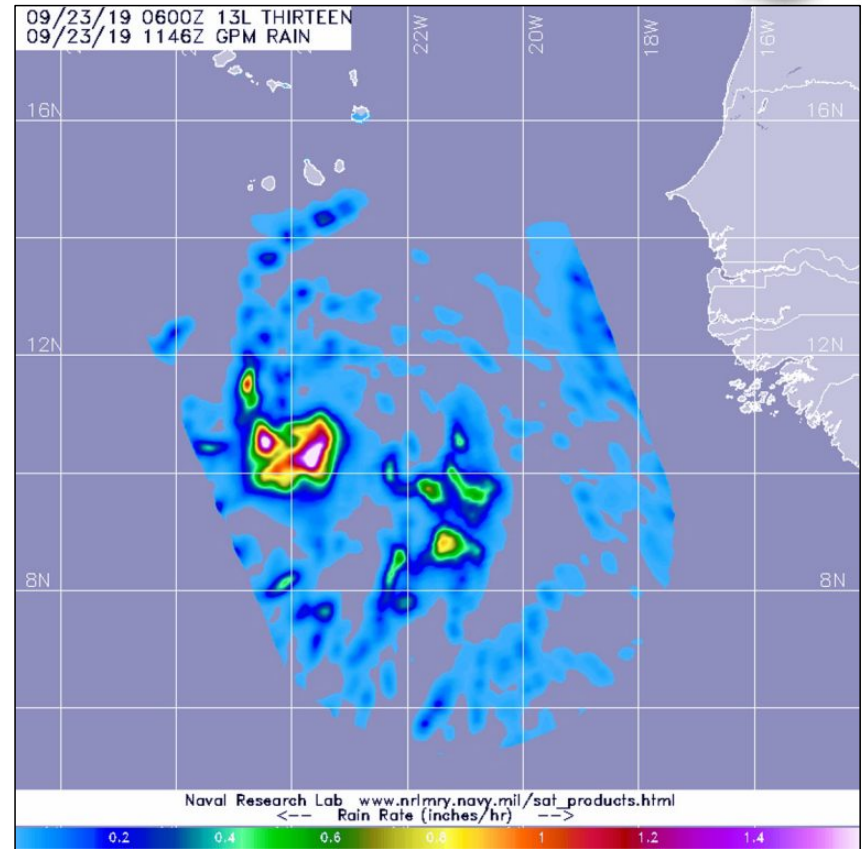
Issue	Monitoring and forecasting storms to support disaster preparation and response
Objective	Use satellite imagery to monitor and track behavior of tropical cyclones
Solution	GMI data used by the NRL and NOAA's NHC to help understand behavior and location of Lorenzo 
Results/ Benefit	GMI used by NHC to help communicate about the storm's behavior (and available to the public)

Recent GMI microwave imagery and ASCAT-C data showed that the low-level center of Lorenzo is on the north side of most of its deep convection. While this disorganized structure may limit how quickly Lorenzo can strengthen in the short-term, the tropical storm is located within a generally favorable environment for intensification. All of the intensity guidance shows Lorenzo becoming a hurricane, but the timing varies from model to model. The official forecast follows the HFIP Corrected Consensus, and shows Lorenzo reaching hurricane status within 48 h. Continued strengthening is forecast thereafter. No noteworthy changes were made to the NHC intensity forecast.

The ASCAT and microwave data were very helpful in determining the location of Lorenzo's center and its forward speed. The cyclone has accelerated and the initial motion estimate is now 275/15 kt. Very little adjustment was made to the NHC track forecast. Lorenzo is still forecast to be steered generally westward to west-northwestward to the south of a deep-layer ridge centered over the eastern Atlantic. The cyclone will pass well south and southwest of the Cabo Verde Islands through tonight. A turn toward the northwest is forecast in about 4 days as Lorenzo reaches a break in the ridge. Just like the intensity forecast, the track forecast is


The NHC provides regular updates of a storm's track, location, and behavior to the public. The NHC mentioned the use of the

GMI instrument in a recent discussion of tropical storm Lorenzo on 09/23/2013 at 11am (above). Credit: <https://www.nhc.noaa.gov/archive/2019/a13/a132019.discus.003.shtml>



GPM's GMI provides a view of Lorenzo's precipitation, showing the heaviest rainfall near the center on 09/23/2019.

Credit: NASA/JAXA/NRL

Issue	Monitoring and forecasting drought
Objective	Develop tool (DSET) for improved drought reporting
Solution	DSET connects NASA Earth Observations, modeled climate data, and in-situ rain gauge data for on-the-fly analyses 
Results/ Benefit	DSET end products (field scale maps, time series figures, and reporting metrics) will assist in drought emergency declarations and the subsequent allocation of relief dollars across the NN

The Drought Severity Evaluation Tool (DSET)




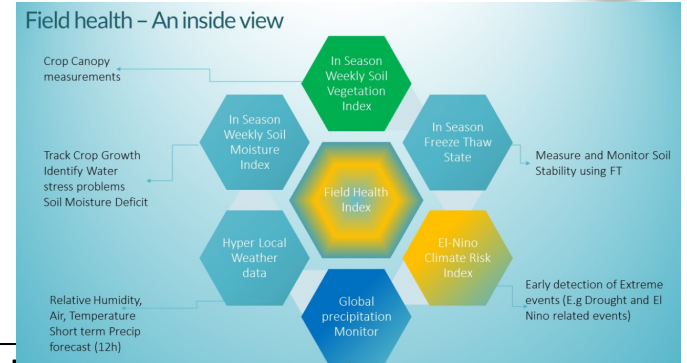
Image credit: Amber Jean McCullum¹, Justin Huntington², Britta Daudert², Carlee McClellan³
 (¹Bay Area Environmental Research Institute/NASA Ames Research Center, ²Desert Research Institute, ³Navajo Nation Dept of Water Resources).



Monitoring and Managing Weather Risks with GPM



Issue	Protect farmers from financial disaster and combat food insecurity faced by environmental extremes
Objective	Work with companies to develop insurance platform that protects agricultural assets when a disaster strikes
Solution	Uses climate and weather data to monitor and manage risks in agriculture 
Results/ Benefit	Work with thousands of farmers and companies throughout world to design payouts



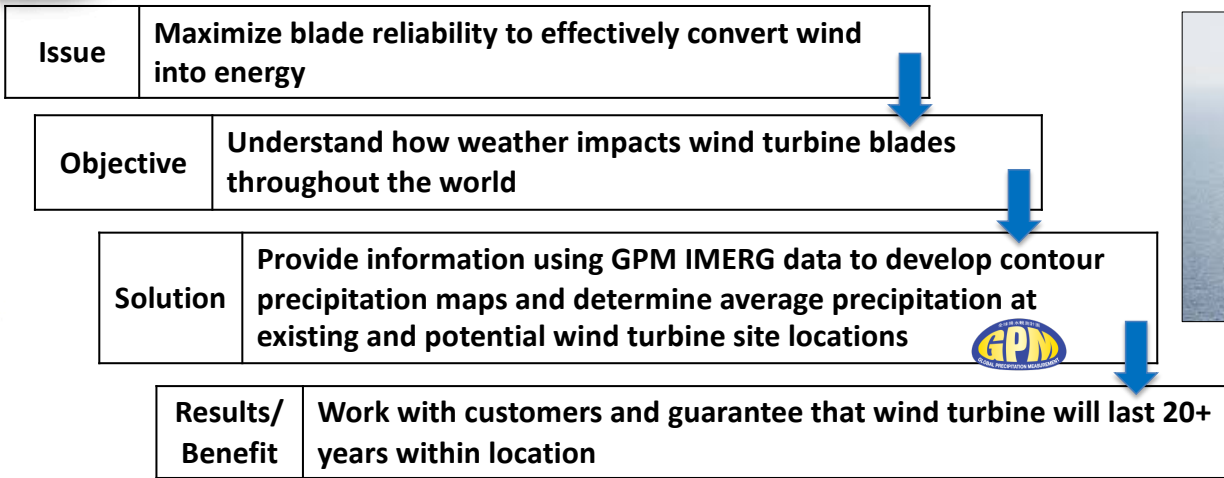
GPM

Agvesto - GPM Index Capture



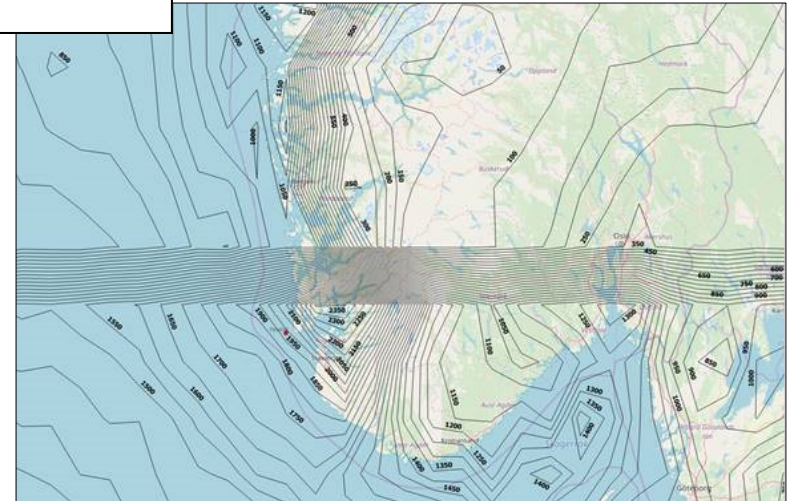
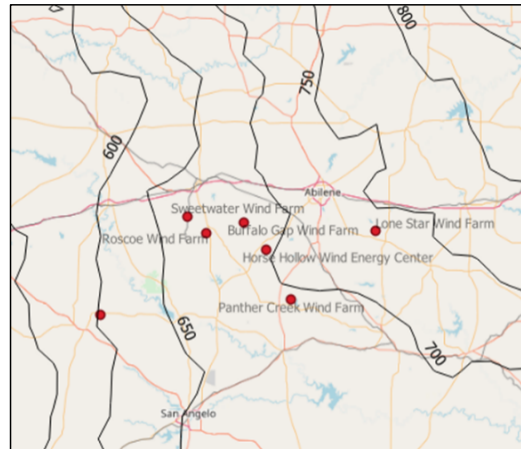
In April 2016, Argentina and Uruguay received upwards of 300mm above monthly average which led to flooding. To help assess the total crop damage and potential crop yield, Agvesto worked with the Argentine government to provide field health and risk insights using GPM precipitation and SMAP soil moisture data. Credit: Agvesto.

GLOBAL PRECIPITATION MEASUREMENT



Map of average precipitation in Texas (left) and the North Sea and western Norway (right) depicted by black contour lines using GPM IMERG data.

Image credits: Laurids Andersen

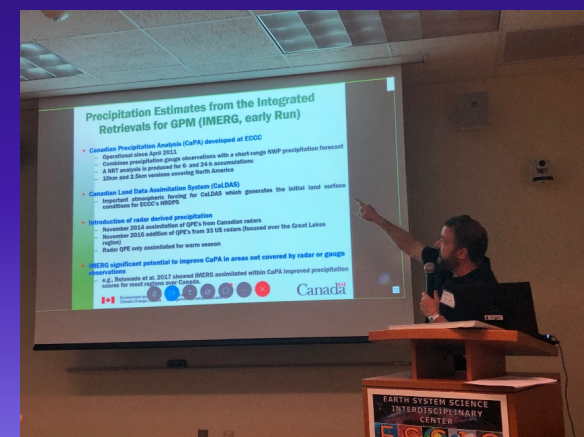




Weather and Air Quality Forecasting Applications Workshop



- July 22-23, 2019, 40 experts (NASA, NOAA, NRL, JMA, JAXA, ECMWF, ECCC)
- Discuss how existing NASA satellite products could be better leveraged for NWP and AQ forecasting efforts and outline future needs for NASA's next generation satellite estimates
- Discuss utility and opportunities for future measurements for ACCP





Weather and AQ Workshop



Objectives:

- Understand how GPM data products are currently assimilated in NWP modeling and opportunities for future applications;
- Explore barriers and solutions related to the assimilation of satellite observations into NWP models and opportunities for AQ forecasting;
- Assess how future measurements from the ACCP concept study may be utilized by the NWP and AQ forecast community; and
- Increase awareness of the needs of the NWP and AQ forecast community for future research developments and collaboration.

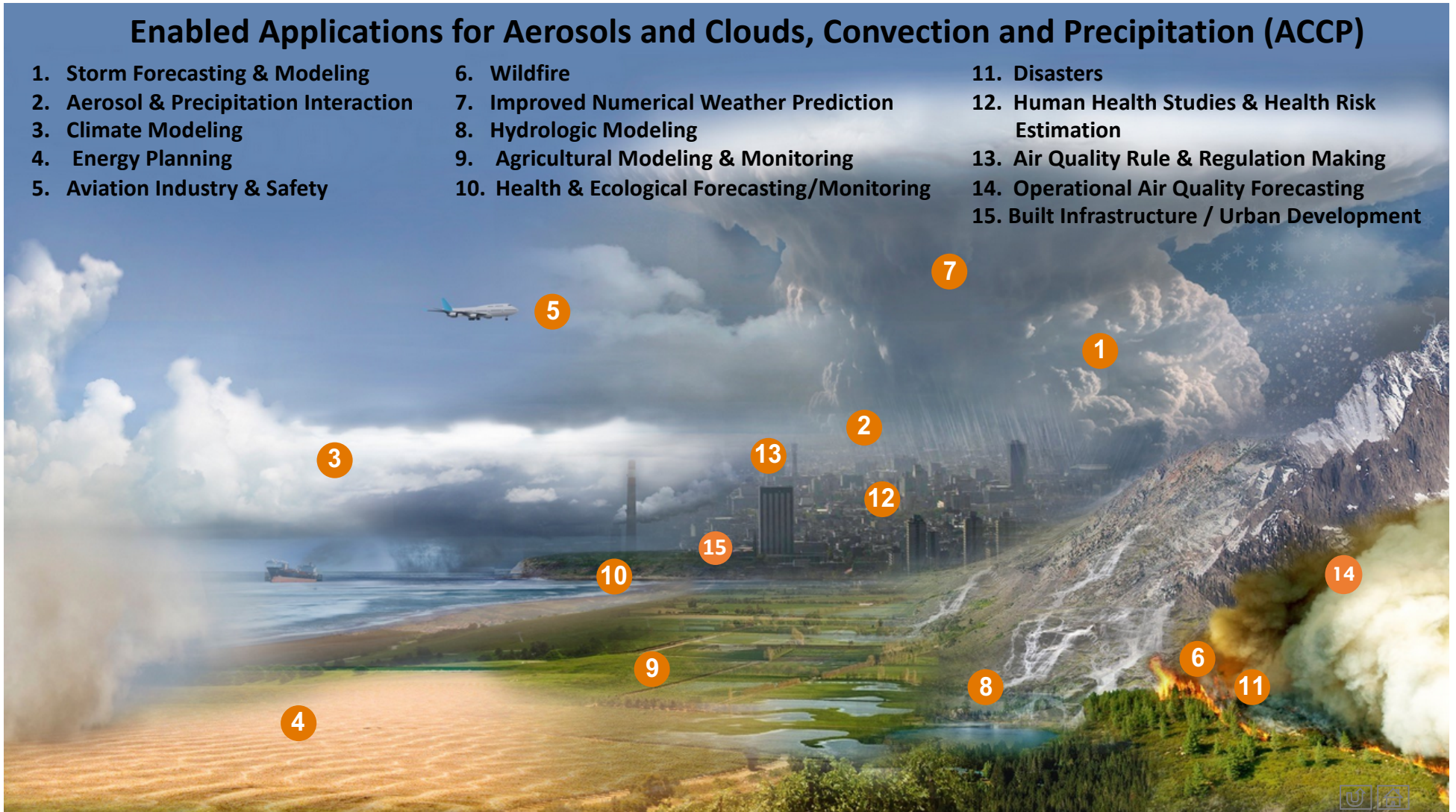
End Products:

- 1) Series of highlights
- 2) White paper
- 3) Workshop summary for EOS
- 4) Direct input to inform A-CCP's SATM and Applications Library documents

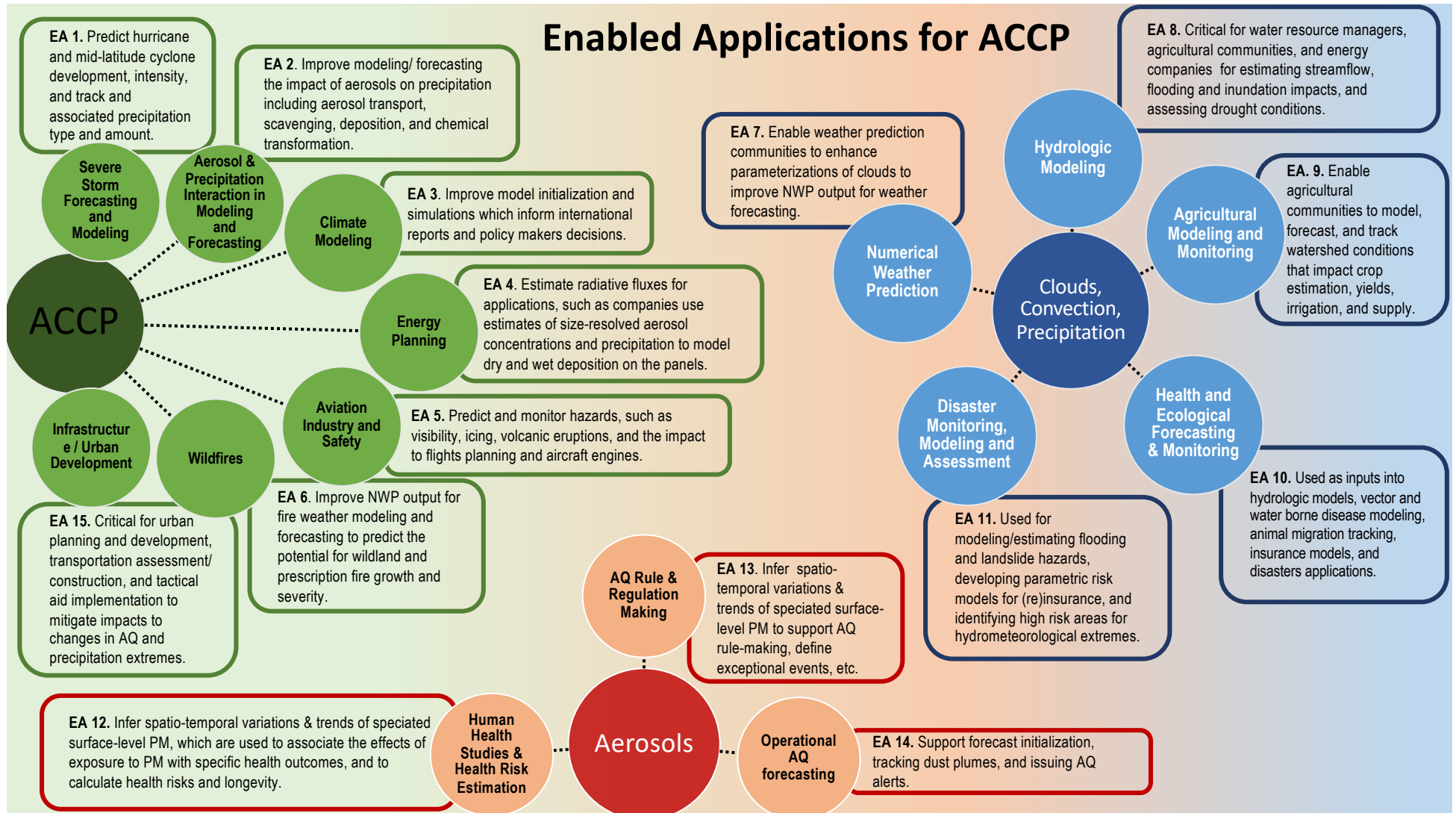


Enabled Applications for Aerosols and Clouds, Convection and Precipitation (ACCP)

1. Storm Forecasting & Modeling
2. Aerosol & Precipitation Interaction
3. Climate Modeling
4. Energy Planning
5. Aviation Industry & Safety
6. Wildfire
7. Improved Numerical Weather Prediction
8. Hydrologic Modeling
9. Agricultural Modeling & Monitoring
10. Health & Ecological Forecasting/Monitoring
11. Disasters
12. Human Health Studies & Health Risk Estimation
13. Air Quality Rule & Regulation Making
14. Operational Air Quality Forecasting
15. Built Infrastructure / Urban Development



Enabled Applications for ACCP



GPM Outreach Activities



2019 Fall IMERG Campaign



Oct 15 -20, 2019: GPM launched campaign to highlight release of V06 IMERG!

Campaign events included:

- NASA.gov feature
- Six core data visualization products
- NASA Live Shots morning that consisted of 31 TV, radio, and print interviews
- Introductory applications webinar (>110 registrants)
- NASA GSFC Visitors Center Sunday Experiment
- PMM Webpage to support activities
- Social Media posts (Tumblr, Snapchat story posted Oct. 29th)



PRECIPITATION MEASUREMENT MISSIONS

Home GPM TRMM Science Applications Meetings Data Access Resources Education

GPM

- Science Objectives
- GPM Ground Validation
- Extreme Weather News
- GPM Flight Project
- Constellation Partners
- Meetings and Workshops
- Mission Updates
- Launch
- PMM Science Team

Connect With Us

- Twitter
- Facebook
- Youtube

Two Decades of Precipitation Measurement

NASA's Precipitation Measurement Missions (PMM) have collected rain and snowfall from space for nearly 20 years, and for the first time in 2019, scientists can access PMM's entire record as one data set.

Click Here for More IMERG Resources

KEYWORDS

IMERG

SHARE THIS ARTICLE

Share 0

Tweet

Google+

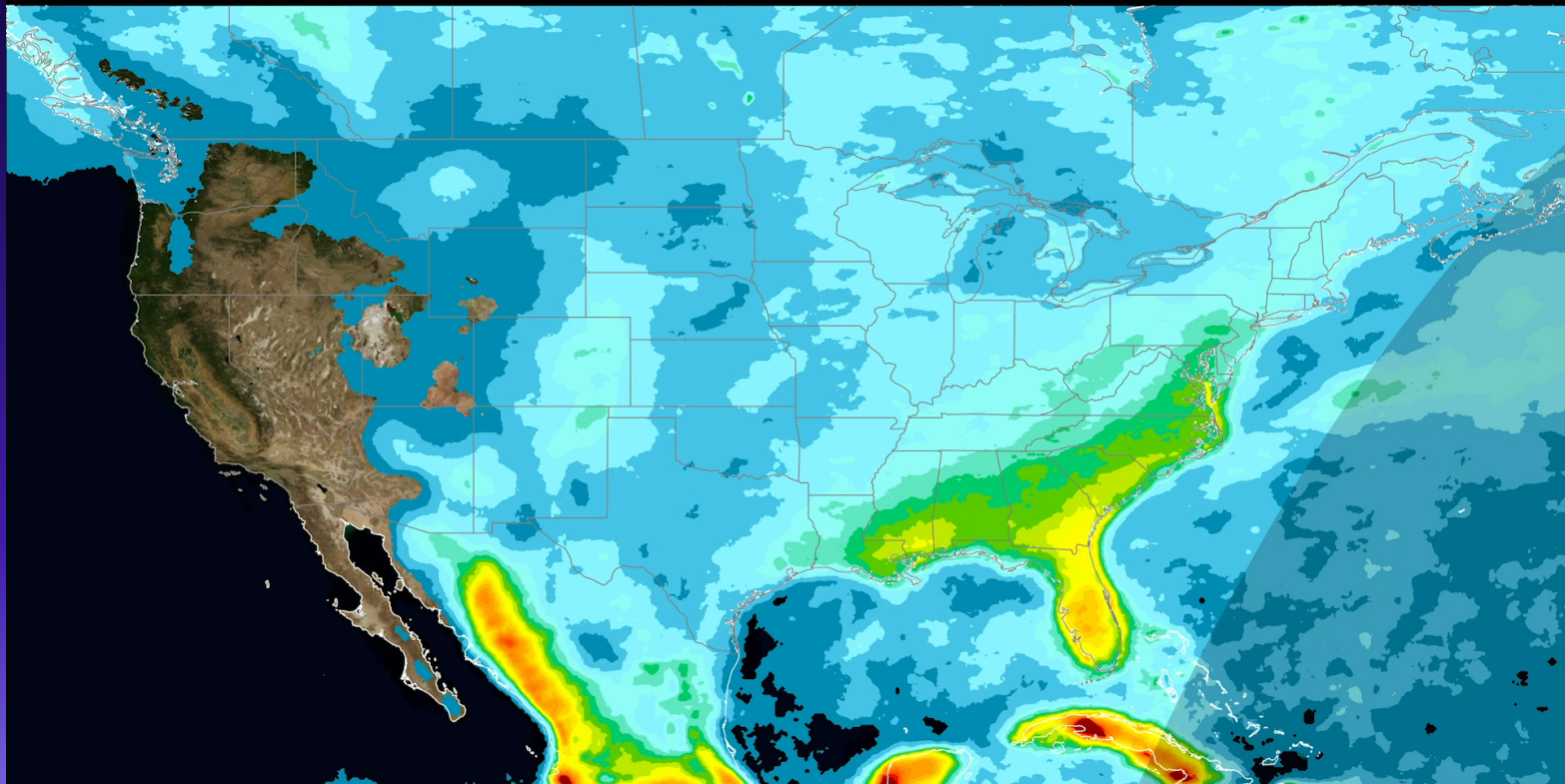
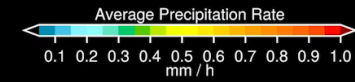
Reddit



Precipitation Diurnal Cycles

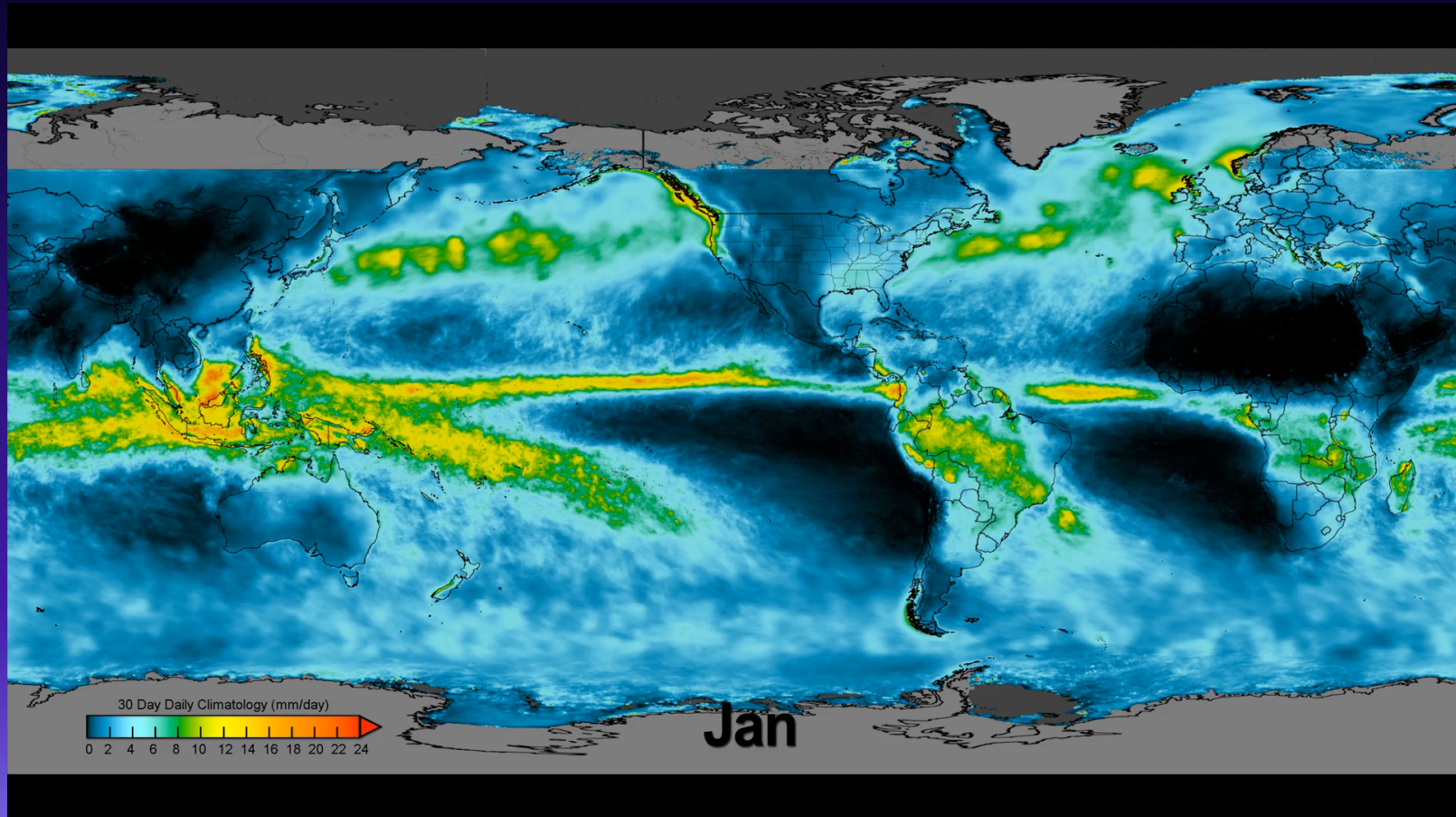


00:00 UTC





IMERG Daily Climatology





Go to Class!



GLOBAL PRECIPITATION MEASUREMENT



NATIONAL AERONAUTICS AND SPACE ADMINISTRATION

GODDARD SPACE FLIGHT CENTER

Search

PRECIPITATION MEASUREMENT MISSIONS

- Home
- GPM
- TRMM
- Science
- Applications
- Meetings
- Data Access
- Resources
- Education

GPM

- Science Objectives
- GPM Ground Validation
- Extreme Weather News
- ▶ GPM Flight Project
- Constellation Partners
- Meetings and Workshops
- Mission Updates
- Launch
- PMM Science Team**

Connect With Us



Twitter



Facebook



Youtube

PMM Science Team

The [NASA Precipitation Measurement Missions \(PMM\)](#) Science Team conducts scientific research (including [algorithm](#) development, mission implementation, product validation, and data utilization) in support of [TRMM](#) and [GPM](#) Missions. The team comprises scientists funded by NASA and international investigators selected by NASA on the basis of no exchange of funds.

- [PMM Science Program Management Team](#)
- [PMM Principal Investigators and Proposals](#)
- [PMM Principal Investigators funded under NASA Internal Work Packages](#)
- [PMM / GPM International Collaborator Team](#)

Go To Class!

Here you will find a variety of resources to assist you in making a visit to a local school, day care center, or after school group. Make a difference in the lives of young people by sharing what you do and the excitement of learning about GPM, Earth's freshwater resources, and the water cycle.

[Click here to visit this section](#)

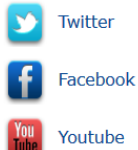
PRECIPITATION MEASUREMENT

Home GPM TRMM Science Applications Meetings Data Access

Resources

- ▼ Images
 - PMM
 - GPM
 - TRMM
 - Flight Project
 - Ground Validation
- ▼ Videos
 - GPM
 - TRMM
 - Ground Validation
- Featured Articles Archive
- Media & Press
- GPM Refereed Publications
- TRMM Refereed Publications
- ▼ Documents
- Related Sites
- Glossary
- Acronyms
- 3D Printed GPM Precipitation Data
- ▼ Go To Class
 - Early Childhood
 - Elementary
 - High School
 - Middle School
 - Preschool

Connect With Us



Need Help?

- View Frequently Asked Questions
- View the PMM Glossary
- Contact Us

Go To Class

We Want You to Go to Class!

Our students desperately need to have some face to face time with scientists and engineers who are doing amazing things to make their world a better place. That means you guys! From time to time, you may be invited to give a presentation on your work to kids in some context- and we want to make it easier for you. You might even reach out yourself to your local school and offer to come in and give a talk.

Having been a classroom teacher across all grade levels by the time I finished my illustrious career, I know personally the joy of having real STEM professionals come in and share the excitement and wonder of their work with my students. I also know that many of them felt a bit out of their comfort zone trying to explain what they did to the eager little 6-year-old faces looking up at them. Below you will find some hints, Best Practices, links to the National Science Standards, and sample activities to do with kids across all grade levels, from pre-K to high school!



Should you have any questions, feel free to reach out to me. I can also send you some GPM "droplets", anime comic books, and/or stickers to hand out while you are visiting the students. Contact me at dorian.w.janney@nasa.gov . Be sure to give me at least three weeks to mail things out.

Click on the age/grade levels below to see ideas for how you can "Go to Class" and make lasting memories as you inspire kids and their teachers!

- [Preschool](#) (ages 2 through 5 years)
- [Early Childhood](#) (grades K through 2nd)
- [Elementary School](#) (grades 3rd-5th)
- [Middle School](#) (grades 6-8)
- [High School](#) (grades 9-12)

Preschool



These are such fun little people lots of enthusiasm and question everything they know and then turn to share in. While that is e you are trying to convey pretty

Here are some general guidelines

• A typical presentation to ti like this:

- Everyone is sitting on t sitting on a small chair on carpet squares or in
- You introduce yourself, you if they know you a introduction your name hydrologist; and what y
- A very short introductio about clouds and how t a little bit about how r When I am finished, w learn a little more".
- You talk for a few minu everyone can respond out the answer togeth about their weekend at sidetracked if you allow questions by individual
- Have a few slides to sh I will list a few suggest age level. When you s the slide pointing thing call out the names of t have them repeat som the water cycle (only th evaporation- condensa

Early Childhood



Students in K-2nd grades are eage scientist come to visit their class! often like to share their experie look over the suggestions in the c Best Practices for giving presentat

There are many ways in which the meaningful and engaging to child some of the Next Generation Scie states across the country) that rel might present on to children in th attempting to teach everything in th information in the standard will gi children in that grade level need t their knowledge. You are just one achieve these rather broad and co

Kindergarten:

- K-ESS2 Earth's Systems
- K-ESS3 Earth and Human Acti

First Grade:

- 1-LS1 From Molecules to Org

Second Grade:

- 2-ESS2-1 Earth's Systems
- 2- LS2 Ecosystems: Interacti

The key topic areas that are relev these grade levels center around availability/resources. You can fin videos we have developed and ga topics below. You might look over could also forward the lists to the resources.

High School



Students in high school are very interested in hearing about science from "real" scientists! Although they have a lot of background knowledge about natural phenomena, they will also have misconceptions as well. They are also at the age in which they will begin to consider their future career interests, and hearing from you about why you chose your career will be very interesting to them. They may be reticent at first to answer questions for fear of "sticking out" among their peers. Take a few minutes to read over the "Giving Presentations in Secondary Schools" get a feel for what secondary school classes are like and some pointers for presenting to students in these grade levels.

There are many ways in which the science behind the GPM mission is meaningful and engaging to students in high school classes. Here are some of the Next Generation Science Standards (followed by most states across the country) that relate directly themes germane to GPM's science and technology. Note that you aren't attempting to teach everything in the standards below- rather the information in the standard will give you a sense of what ultimately children in that grade level need to know and do to demonstrate their knowledge. You are just one small step toward helping them achieve these rather broad and complicated standards of science.

- HS- ESS2 Earth's Systems
- HS- ESS3 Earth and Human Activity
- HS- PS4 Waves and their Applications in Technologies for Information Transfer
- HS- ETS1 Engineering Design

The key topic areas that are relevant to GPM and are related to students in these grade levels center around the water cycle and freshwater availability/resources. You can find many of the lessons plans and videos we have developed and gathered related to each of these topics below. You might look over these to get some ideas, and could also forward the lists to the teacher to offer them additional resources.

SHARE THIS ARTICLE



Go to a Grade

- [Preschool](#)
- [Early Childhood](#)
- [Elementary School](#)
- [Middle School](#)
- [High School](#)



Precipitation Education Webpage



GLOBAL PRECIPITATION MEASUREMENT

Precipitation Education

Home Current Activities GPM Originals Glossary & FAQ GPM Mission

Water Cycle
The continuous movement of water on, above and below Earth's surface.

Weather & Climate
The atmospheric conditions that lead to our daily weather and global climate.

Technology
The spacecraft, instruments and people that study Earth systems.

Societal Applications
How studying our planet's rain and snowfall makes the world a better place.

Why Measure Rain and Snow?

Rain, snow, and other forms of precipitation affect every part of life on Earth. Rain falls on the crops we eat, fills the reservoirs of water we drink, and is an integral part of everyday weather and long term climate trends. This website, presented by NASA's Global Precipitation Measurement (GPM) mission, provides students and educators with resources to learn about Earth's water cycle, weather and climate, and the technology and societal applications of studying them.

New to the site? [Click here for a quick video tour.](#)

The GPM Core Observatory successfully launched on February 27th, 2014, [learn more.](#)

Global Precipitation Measurement

GPM is an international satellite mission that uses multiple satellites orbiting Earth to collect rain, snow and other precipitation data worldwide every three hours. On February 27th, 2014, NASA and the Japan Aerospace Exploration Agency (JAXA) launched a Core Observatory satellite carrying advanced instruments that improve our precipitation-measuring capabilities and bring all the data from the partner satellites into a unified global dataset.

- Learn More about GPM
- See our Current Activities
- Water Cycle Basics
- Frequently Asked Questions

Search [Advanced Search](#)

Browse Type

Video	Article	Formal	K-5
Image	Website	Informal	6-8
Interactive	Lesson Plan	Outreach	9-12

Featured Resources

Raindrop Tales: GPM Meets Mizu-Chan

<https://pmm.nasa.gov/education/>

302,836 pageviews in month of October (new all-time high!)

PMM Website: 95,000 pageviews per month



Twitter: **NASARain** **27,000+ followers**

https://www.twitter.com/NASA_Rain

Home Moments Notifications Messages Search Twitter Tweet

TWEETS 2,894 FOLLOWING 234 FOLLOWERS 17.5K LIKES 95 LISTS 2 MOMENTS 0 Edit profile

GPM & TRMM Missions
@NASARain
Official acct. of NASA's Precipitation Measurement Missions. Get the latest GPM, TRMM and ground validation news, and learn about Earth's weather and climate.
Goddard Space Flight Center
pmm.nasa.gov
Joined July 2011
Photos and videos

Tweets Tweets & replies Media

GPM & TRMM Missions @NASARain · Oct 18
GPM Looks at Rainfall in Remnants of Songda Over Pacific NW
pmm.nasa.gov/extreme-weathe ...

Your Tweet activity
Your Tweets earned **27,484** impressions over the last week

Who to follow · Refresh · View

- CanadianSpaceA... Follow
- NASA JPL @NASA... Follow
- BmoreKarl @bmore... Followed by Aries

United States Trends · Change

#DebateHeadache Debates bring headaches; Exceedin® brings fast
Promoted by Exceedin®
#BeRomanticIn4Words
3.4K Tweets



Facebook: **NASARain** **52,500+ Followers**

<https://www.facebook.com/NASA.Rain>

facebook Email or Phone Password Log In

Precipitation Measurement Missions @NASARain

Home Like Message Share More

About Photos Videos Likes Posts Create a Page

Precipitation Measurement Missions
Yesterday at 7:32am · 49,202 likes

The Global Precipitation Measurement mission or GPM core satellite saw heavy rain with rates of around 50 mm/hr (~2 inches/hr shown in dark red) in the front that absorbed the remnants of former northwestern Pacific Ocean Typhoon Songda. These images were created from data taken on Saturday, Oct. 15 as the front was affecting the U.S. Pacific Northwest. The rain is depicted in red and green areas, indicating heavy, moderate and light rain, respectively.
Credit: NASA Jacob Reed / JAXA
More GPM extreme weather news:
<https://pmm.nasa.gov/extreme-weather>

5.1K Views
Like Comment Share

Youlle Mbeng, Jose Enri Caro, Rhane Rhodes and 59 others like this.

Government Organization
Search for posts on this Page
PEOPLE 49,202 likes
ABOUT
PHOTOS



https://pmm.nasa.gov/ New website coming soon!



PRECIPITATION MEASUREMENT MISSIONS
Missions Data Applications Research Resources Education

Modeling Landslide Threats in Near Realtime
For the first time, scientists can look at landslide threats anywhere around the world in near real-time, thanks to satellite data and a new model developed by NASA. The model, developed at NASA's Goddard Space Flight Center in Greenbelt, Maryland, estimates potential landslide activity triggered by rainfall. Rainfall is the most widespread trigger of landslides around the world. If conditions beneath Earth's surface are already unstable, heavy rains act as the last straw that causes mud, rocks or debris — or all combined — to move rapidly down mountains and hillsides.

July

GET DATA
GLOBAL PRECIPITATION MEASUREMENT
New Users Start Here
NASA satellite precipitation data is made freely available to all researchers who wish to use it. Visit this section for a directory of data products, documentation, training materials and more.
Learn more

1997-2013
NASA's Precipitation Measurement Missions use satellites to measure Earth's rain and snowfall for the benefit of mankind. Launched by NASA and JAXA on Feb. 27th, 2014, the Global Precipitation Measurement Mission (GPM) is an international mission that sets the standard for spaceborne precipitation measurements. Using a network of satellites led by the GPM Core Observatory, GPM expands on the legacy of the Tropical Rainfall Measuring Mission (TRMM) by providing high quality estimates of Earth's rain and snowfall every 30 minutes. Learn More

2014-Present
Learn how PMM datasets are being used by government agencies and other organizations around the world to study natural disasters, public health, freshwater resources, and a variety of other application areas.
Learn more

GPM IMERG Early Run
Latest Half-hour of Earth's Precipitation
The Integrated Multi-satellite Precipitation Retrievals for GPM product combines infrared and microwave sensors from a constellation of partner satellites, united by the GPM Core Observatory, to provide near real-time half-hourly precipitation estimates at 10km resolution for the entire globe.
• Learn More About IMERG
• Download IMERG Data

2019/10/28 10:30:00

Related Projects
LANDSLIDES @ NASA
NASA scientists are building a catalog of landslides so we can be prepared when the next

Upcoming Events
June 28, 2018
Using NASA Earth Observations to Predict and Monitor Water-related

Tweets
@NASA_Precipitation
Make your very own map of long term global precipitation in 100. The GPM sample with interactive, can be downloaded from: pmm.nasa.gov/learn/IMERG/

PRECIPITATION MEASUREMENT MISSIONS
Missions Data Applications Research Resources Education

The Global Precipitation Measurement Mission (GPM)

Tuesday, July 9, 2019

GPM Mission Concept
The Global Precipitation Measurement (GPM) mission is an international network of satellites that provide the next-generation global observations of rain and snow. Building upon the success of the Tropical Rainfall Measuring Mission (TRMM), the GPM concept centers on the deployment of a "Core" satellite carrying an advanced radar/radiometer system to measure precipitation from space and serve as a reference standard to unify precipitation measurements from a constellation of research and operational satellites. Through improved measurements of precipitation globally, the GPM mission is helping to advance our understanding of Earth's water and energy cycle, improve forecasting of extreme events that cause natural hazards and disasters, and avoid current capabilities in using accurate and timely information of precipitation to directly benefit society. GPM, led by NASA and the Japan Aerospace Exploration Agency (JAXA) as a global successor to TRMM, comprises a consortium of international space agencies, including the Centre National d'Etudes Spatiales (CNES), the Indian Space Research Organisation (ISRO), the National Oceanic and Atmospheric Administration (NOAA), the European Organization for the Exploitation of Meteorological Satellites (EUMETSAT), and others.
The GPM Core Observatory launched on February 27th, 2014 at 1:37pm EST from Tanegashima Space Center, Japan. Learn more about the launch.

Sections

- GPM Mission Concept
- Building upon TRMM's Legacy
- GPM Core Observatory
- GPM Science and Applications

Missions

GPM
GPM Constellation
Spacecraft and Instruments
Dual-Frequency Precipitation Radar (DPR)
GPM Microwave Imager (GMI)
Launch

TRMM
Spacecraft and Instruments
Extreme Weather News

Follow Us

GET DATA
GLOBAL PRECIPITATION MEASUREMENT
Questions? Contact Us

RELATED LINKS

- JAXA, Japanese Aerospace Exploration Agency
- TRMM: Tropical Rainfall Measuring Mission

Global Precipitation Measurement Core Observatory
Download the GPM Mission brochure

GPM Constellation April 2019
Diagram of the GPM satellite constellation as of early 2019. Credit: NASA GSFC

Building upon TRMM's Legacy
The Tropical Rainfall Measuring Mission (TRMM), launched by NASA and JAXA in 1997, used both active and passive microwave instruments to measure rainfall in the tropics. It also provided a foundation for merging rainfall information



<https://pmm.nasa.gov/applications>



PRECIPITATION MEASUREMENT MISSIONS
Missions Data Applications Research Resources Education

Home > Applications

APPLICATIONS
GLOBAL PRECIPITATION MEASUREMENT

Water is fundamental to life on Earth. Knowing where and how much precipitation falls globally is vital to understanding how weather and climate impact our environment including the effects on agriculture, fresh water availability and natural disasters, among others. The Global Precipitation Measurement (GPM) mission uses advanced space-borne instruments to measure global precipitation, ranging from light rain to heavy rain and snow, to produce a global dataset every 30 minutes. Through improved measurements of rain and snow, precipitation data from the GPM mission reveals new information for a diverse range of applications across agencies, research institutions and global community.

What are Applications?
"Applications" refers to the use of mission data products in decision-making activities for societal benefit. Mission Applications take a satellite's data products and expands them into areas where they can help inform policy or decisions.

Among the applications of GPM mission data are improvements to our understanding and forecasting of tropical cyclones, severe weather, floods, landslides, energy production, spread of water-borne diseases, ecosystems, agriculture, freshwater availability and climate change. Data from the GPM Core Observatory, combined with data from other satellites within the constellation, will lead to advances in precipitation measurement science that will subsequently benefit society for years to come.

Sections

- GPM Applications Overview
- What are Applications?
- More Information
- Featured Applications Articles

Applications
Ecology
Water & Agriculture
Energy
Disasters
Health
Weather

Follow Us
Twitter Facebook YouTube

GET DATA
GLOBAL PRECIPITATION MEASUREMENT

Questions? Contact Us

Applications Resources

- GPM Training
- Workshops and Meetings
- GPM Scientific Visualization Studio
- GPM Applications Poster (.pdf)
- GPM Applications & Data Access One Pager (.pdf)

Get Involved +

GPM Applications Team +

GPM Applications Materials +

Applications Featured Resources

Applications Articles Applications Videos Applications Highlights

NASA Rainfall Data and Global Fire Weather

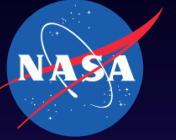
The Global Fire Weather Database (GRWED) integrates different weather factors influencing the likelihood of vegetation fire starting and spreading. It is based on the Fire Weather Index (FWI) System, which tracks the dryness of three general fuel classes, and the potential behavior of a fire if it were to start. Each day, FWI values are calculated from global weather data, including satellite rainfall data from the Global Precipitation Measurement (GPM) mission.

Read More

Using Precipitation Data to Map Cholera Risk

New website will include

- Application Highlights
- Application resources (one-pagers)
- Application Videos/ visualizations



Next Steps.....

Share your application or data use story!

Contribute to the ACCP applications community

Come to the working group meeting (Wednesday @ lunch)





IMERG Daily Cycle of Rain

