



EGS Education and Outreach Georgia Initiative

Brittany Woods



**Exploration
Ground
Systems**

UNLOCKING
deep space exploration

- ◆ **Launching crew and cargo to the Moon and Mars.**
- ◆ **Build. Launch. Recover.**
 - EGS's mission is to prepare the Center to process and launch the next generation of rockets and spacecraft in support of NASA's exploration objectives by developing the necessary ground systems, infrastructure and operational approaches.

Program Goals and Objectives

GOAL 1:	Provide sustainable, affordable and safe ground operations and integration capabilities required to extend the human presence across the solar system; Drive operability into flight and ground systems
GOAL 2:	Proactively share program progress and knowledge with the world
GOAL 3:	Strengthen EGS Program



- ◆ What we value collectively “T.I.E.S” us together as a team, supporting each other in work and life.
- ◆ In all we do, we aim to be role models of the NASA core values

Teamwork

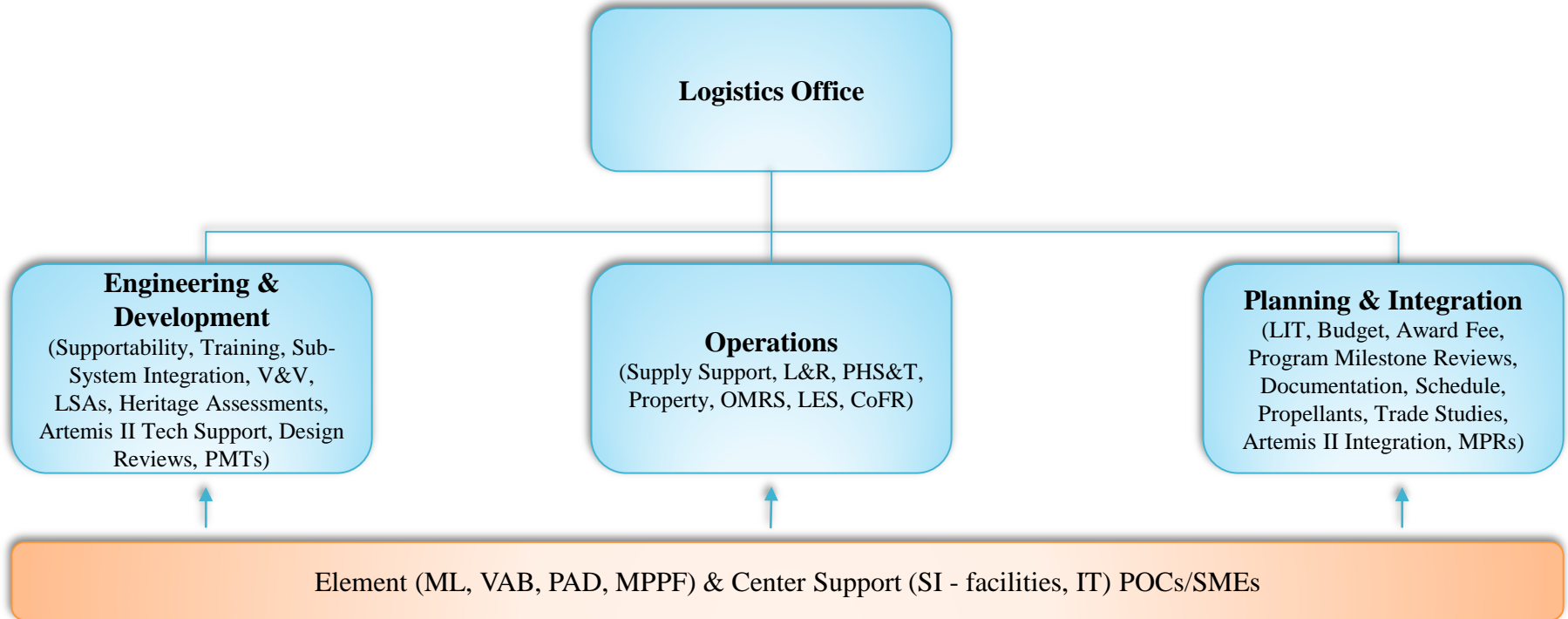
Integrity

Excellence

Safety

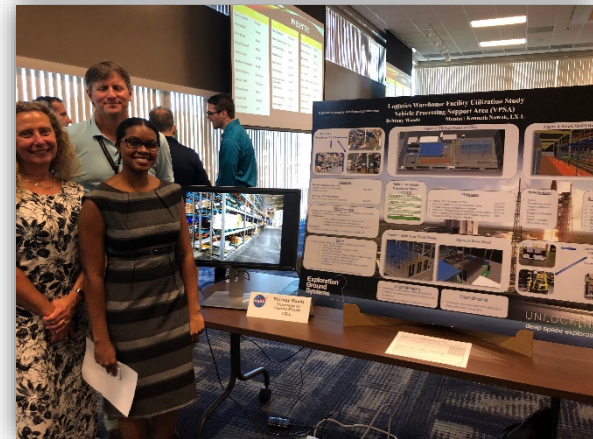
◆ NASA KSC Pathways Internship Employment Program (IEP)

- Intern Appointment - February 4, 2019
- Engineering Student Trainee, LX-L
 - Exploration Ground Systems Program Logistics Office



◆ As an Intern...

- Developed a plan to optimize the Logistics Facility Warehouse Vehicle Processing Support Area
- Proposed four configurations that would accommodate items four times the size of a single pallet location with increased shelf heights



- ◆ **NASA KSC's Accelerated Training Program (ATP)**
 - Conversion date: August 18, 2019
 - AST, Logistics Engineering Management, LX-L
- ◆ **ATP (requires oral presentation)**
 - Orientation
 - Diverse Work Assignments
 - Targeted Work Assignments

◆ As an ATP Participant...

- Skills and Competencies
 - Inventory control, forecasting, facility layout, material handling, facilities design, management and ergonomics
 - Utilize optimization and simulation methods for general analysis and design
 - Analyze, design, build and manage processes and systems that improve quality, productivity, and supportability
 - Integrate combinations of people, information, materials and equipment that produce innovative and efficient organizations
- Diverse Work Assignments
 - Job shadowing various NASA Organizations and EGS Directorates
- Performed Logistics Supportability Analysis
 - EGS Storage Requirements Analysis / Warehouse Redesign



Why NASA or STEAM Career?



