

A 60 kpc Galactic Wind Cone in NGC 3079

EDMUND J. HODGES-KLUCK,¹ MIHOKO YUKITA,^{1,2} RYAN TANNER,^{1,3} ANDREW F. PTAK,¹ JOEL N. BREGMAN,⁴ AND JIANG-TAO LI⁴

¹Code 662, NASA Goddard Space Flight Center, Greenbelt, MD 20771, USA

²Henry A. Rowland Department of Physics and Astronomy, Johns Hopkins University, Baltimore, MD 21218, USA

³Universities Space Research Association, 7178 Columbia Gateway Dr, Columbia, MD 21046

⁴Department of Astronomy, University of Michigan, Ann Arbor, MI 48109, USA

ABSTRACT

Galactic winds are associated with intense star formation and AGNs. Depending on their formation mechanism and velocity they may remove a significant fraction of gas from their host galaxies, thus suppressing star formation, enriching the intergalactic medium, and shaping the circumgalactic gas. However, the long-term evolution of these winds remains mostly unknown. We report the detection of a wind from NGC 3079 to at least 60 kpc from the galaxy. We detect the wind in FUV line emission to 60 kpc (as inferred from the broad FUV filter in *GALEX*) and in X-rays to at least 30 kpc. The morphology, luminosities, temperatures, and densities indicate that the emission comes from shocked material, and the O/Fe ratio implies that the X-ray emitting gas is enriched by Type II supernovae. If so, the speed inferred from simple shock models is about 500 km s^{-1} , which is sufficient to escape the galaxy. However, the inferred kinetic energy in the wind from visible components is substantially smaller than canonical hot superwind models.

Keywords: Galactic Winds – Starburst Galaxies – Late-type Galaxies

1. INTRODUCTION

Intense periods of star formation can lead to multi-phase, galaxy-scale outflows driven by the energy and momentum of stellar winds and supernovae. These galactic winds can have speeds of hundreds to thousands of km s^{-1} and are the most extreme instance of stellar feedback (Veilleux et al. 2005; Heckman & Thompson 2017; Rupke 2018). Winds have the potential to regulate or even quench star formation in their host galaxies, and are perhaps the main source of metals in the intergalactic medium. It is generally accepted that star formation and AGN are the source of galactic winds, but how these determine the morphology, kinematics, composition, and how much (if any) material completely escapes the galaxy are unsettled questions. Plausible theoretical models vary widely in their answers to these questions (for a recent theoretical review, see Zhang 2018).

Addressing these uncertainties requires measuring the evolution of wind properties with distance from the galaxy, such as the temperature, density, and velocity phase diagrams. This is challenging because winds expand and decrease in surface brightness, so beyond a few kpc from the galaxy winds have primarily been studied in absorption. For ex-

ample, Kacprzak et al. (2012) found using the MAGICAT dataset of Mg II absorbers that absorption occurs most frequently within $\sim 20^\circ$ of the minor axis (outflows) and major axis (accretion) of the host galaxies (although this is not generally true beyond 40 kpc; Bordoloi et al. 2014), while Heckman et al. (2017) showed with the COS-Burst survey that Ly α absorbers around starburst galaxies have roughly twice the virial velocity, suggesting rapid outflows.

Nevertheless, searching for emission at large radii is important because it enables detailed study of winds from individual objects, whereas pencil-beam absorption studies must build up samples of absorption systems around similar galaxies or focus on well-placed sightlines. This is limiting because the wind properties are sensitive to the characteristics of the generative starburst or AGN, which may differ substantially even in similar galaxies. In addition to emission, scattered Lyman- α can probe winds in individual galaxies (e.g., Duval et al. 2016), but as it does not directly probe ionized gas and can have complex line-of-sight radiative transfer even after scattering it is not a primary tool. One of the best ways to search for emission from winds, which is expected to be primarily line emission, is to use integral field spectrographs on large telescopes (e.g., Finley et al. 2017). Recently, (Rupke et al. 2019) reported the discovery of a 100 kpc wind in SDSS J211824.06+001729.4 (“Makani”) at $z = 0.459$ using the integral field unit on the Keck observatory. However,

it remains worthwhile to search for extended emission from nearby winds because they can be observed with current instruments in nearly every waveband.

Here we present evidence for emission from shocked gas in a biconical outflow extending at least 60 kpc from NGC 3079, using far ultraviolet (FUV) and X-ray data. NGC 3079 is a well known starburst and AGN galaxy with an extensive radio halo (Irwin & Saikia 2003), a nuclear H α and X-ray bubble (Cecil et al. 2001), and diffuse nuclear hard X-rays (Li et al. 2019). A biconical outflow at lower latitudes has already been established from previous H α , X-ray, and UV studies (e.g., Fabbiano et al. 1992; Strickland et al. 2004). There is also a suggestion that the extensive H I tail seen behind the companion NGC 3073 is due to stripping by the wind from NGC 3079 (Irwin et al. 1987), as the ambient halo density required to explain it via stripping in the hot halo of NGC 3079 or the tidal forces needed to strip the gas are inconsistent with existing data (Shafi et al. 2015). If so, this would indicate a wind extended significantly beyond the radio halo, although the prospect of NGC 3073 itself driving an outflow has not been thoroughly explored. The starburst in NGC 3079 is fueled by $3 \times 10^8 M_{\odot}$ of molecular gas in the nucleus (Sofue et al. 2001) with a nuclear star-formation rate (SFR) of $2.6 M_{\odot} \text{ yr}^{-1}$ (Yamagishi et al. 2010).

In the following sections we describe the data sources (Section 2), the search for extended diffuse emission and structure (Section 3), and our interpretation of this structure based on the X-ray properties (Sections 4 and 5). We close with a summary in Section 6. We adopt a distance of $d = 19$ Mpc for NGC 3079 (Springob et al. 2009), which corresponds to a scale of $5.5 \text{ kpc arcmin}^{-1}$ and is the median redshift-independent distance from the NASA/IPAC Extragalactic Database¹.

2. OBSERVATIONS AND DATA

The primary data sets used in this paper are a 16.1 ks *GALEX* (Galaxy Evolution Explorer) observation of NGC 3079 and 300 ks of new and archival *XMM-Newton* observations. 231 ks of new observations were obtained under *XMM-Newton* project 080271 (PI: Hodges-Kluck). We also used archival *Chandra*, *Neil Gehrels Swift Observatory* (*Swift*), *Infrared Astronomy Satellite* (IRAS), and *Herschel* observations as complementary data sets.

2.1. GALEX

We used the FUV and NUV pipeline-processed *GALEX* images. The FUV filter has an effective wavelength of 1542Å and a width (FWHM) of 228Å. The NUV filter has an effective wavelength of 2274Å and a width of 796Å. The on-axis angular resolution of the 50 cm telescope is about $4.2''$ in the

Table 1. UV and X-ray Observations in this Paper

(1)	(2)	(3)	(4)	(5)	(6)
Telescope	Instrument	Date	ObsID	Exposure	GTI
				(10^3 s)	(10^3 s)
GALEX	FUV	2005-02-24	NGA_NGC3079	16.1	16.1
GALEX	NUV	2005-02-24	NGA_NGC3079	16.1	16.1
Swift	UVW1	2013-11-12	80030001	0.3	0.3
Swift	UVM2	2008-02-26	37245001	8.5	8.5
Swift	UVW2	2009-02-27	37245002	1.2	1.2
Swift	UVM2	2013-11-12	80030001	0.6	0.6
Swift	UVW2	2014-04-04	91912001	0.7	0.7
Swift	UVW2	2014-04-06	91912002	4.9	4.9
XMM	EPIC	2001-04-13	110930201	25.3	3.1
XMM	EPIC	2003-10-14	147760101	44.4	6.6
XMM	EPIC	2017-11-01	802710101	22.8	17.0
XMM	EPIC	2017-11-03	802710201	22.4	7.1
XMM	EPIC	2017-11-05	802710301	22.4	9.1
XMM	EPIC	2017-11-09	802710401	22.4	3.8
XMM	EPIC	2017-11-15	802710501	22.4	11.3
XMM	EPIC	2017-11-23	802710601	22.4	14.1
XMM	EPIC	2017-11-27	802710701	22.4	12.5
XMM	EPIC	2018-04-17	802710801	26.0	22.0
XMM	EPIC	2018-04-21	802710901	22.4	18.6
XMM	EPIC	2018-04-23	802711001	25.3	21.0
Chandra	ACIS-S	2001-03-07	2038	26.6	26.6
Chandra	ACIS-S	2018-01-30	19307	53.2	53.2
Chandra	ACIS-S	2018-02-01	20947	44.4	44.4

FUV and $5.3''$ in the NUV channel. To prepare the images for analysis, we clipped the image to a $25' \times 25'$ square around the galaxy, identified and masked point sources at least 3σ above background, and masked extended sources through visual inspection. The size of the region of interest is limited by the significantly increased noise and image reconstruction artifacts near the edge of the *GALEX* field, and no overlapping *GALEX* image is nearly as deep. Since we are interested in diffuse light near the bright galaxy, we corrected for galactic light scattered into the halo region by the wings of the point-spread function (PSF). We followed the procedure described in Hodges-Kluck et al. (2016) (HK16), which involves subtracting a scaled convolution of the galaxy image (i.e., within the optical R_{25}) with the PSF from the raw image. The scale factor depends on the PSF and accounts for the fact that the galaxy image has already been convolved with the PSF. We used a PSF constructed in HK16 that is $15'$ in radius. There are no other extended sources in the field bright enough to require this procedure. The resultant image is shown in Figure 1.

2.2. XMM

We processed each *XMM-Newton* dataset using Science Analysis Software (SAS) v17.0.0 and applied standard procedures to extract events files for each camera (two MOS

¹ <http://ned.ipac.caltech.edu>

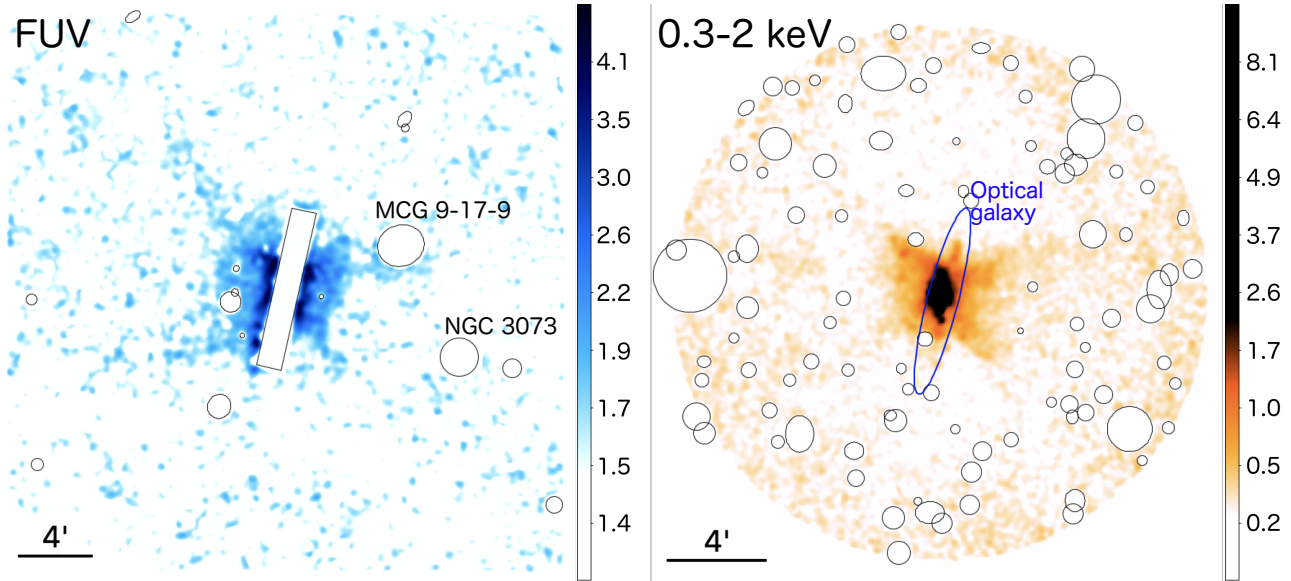


Figure 1. *Left:* *GALEX* FUV image of NGC 3079, corrected for the galaxy light scattered into the wings of the PSF (see text for an explanation). The galaxy itself is clipped out near R_{25} and bright source masks are indicated in black (many more small point sources were excised). Several filament candidates form an “X” shape. The color table is in units of 10^{-4} counts s^{-1} . *Right:* 0.3–2 keV *XMM-Newton* image of the same field with source masks shown in black and the optical galaxy (R_{25}) shown as a blue ellipse. The same “X” shape seen in previous *Chandra* images is evident. The color table is in units of 10^{-5} counts s^{-1} . Both images have been smoothed with a Gaussian kernel and clipped at the mean background.

and one pn). First, we used the `emchain` and `epchain` scripts to filter and calibrate events and produce analysis-ready event lists for the MOS and pn cameras (for the pn we also extracted out-of-time events). We then used the XMM Extended SAS (E-SAS) software (Snowden et al. 2004) to further filter the data, including removing background flares (through `mos_filter` and `pn_filter`), masking point sources (through modified `cheese` masks), and extracting spectra with the quiescent particle background and an estimate of the solar wind charge exchange subtracted (through `mos-spectra`, `mos_back`, `pn-spectra`, and `pn_back`). After filtering, about 150 ks of good time remained (Table 1). We used the background estimates to create filtered images from each detector, and combined these images across all exposures for the image analysis. The combined X-ray image is several times more sensitive to faint point source emission than any individual exposure and so we identified and masked additional sources with `edetect_chain` to highlight the diffuse emission. In general, the source masks extend to where the light from the wings of the PSF is well below the background rather than to a fixed encircled energy fraction.

For the image analysis we adopt the 0.3 – 2 keV bandpass to maximize the signal from hot gas. The combined 0.3–2 keV image is shown in Figure 1. The sensitivity is not uniform across the field, and this image has been clipped to the region where the effective exposure exceeds about 80% of the total. However, there is clearly a ring of increased noise that limits the search for extended diffuse emission. The pri-

mary astrophysical backgrounds are the hot gas in and around the Milky Way and solar wind charge exchange, whereas the instrumental backgrounds include residual soft proton flaring (below the flare detection threshold) and a strong Al $K\alpha$ line (1.49 keV) from the detector. The astrophysical backgrounds are vignettted, the protons are centrally concentrated but not optically vignettted, and the detector background is not vignettted. This means that simple exposure correction can be misleading. We follow Anderson & Bregman (2014) in accounting for backgrounds (but not in fitting a radial profile) in the 0.3–2 keV bandpass, which involves fitting the soft X-ray background spectrum at large radii to obtain its physical normalization, using the unexposed chip corners (through the ESAS software) to make non-vignettted background maps, and “exposure correcting” using a factor based on the vignettting function as a function of radius.

2.3. Auxiliary Data

We used the *uvw1* ($\lambda 2600\text{\AA}$), *uvw2* ($\lambda 2200\text{\AA}$), and *uvw2* ($\lambda 2000\text{\AA}$) *Swift* Ultraviolet and Optical Telescope (UVOT) images as a check on the deeper *GALEX* data. We previously processed these data in HK16, including the removal of persistent, diffuse scattered light artifacts and correcting for the PSF scattering from the galaxy. Multiple short exposures were combined to form single images for each filter.

The 124 ks of archival *Chandra* Advanced CCD Imaging Spectrometer (ACIS) data was used to identify X-ray point sources to remove from the *XMM-Newton* data and to search for diffuse emission. Both data sets were centered on the

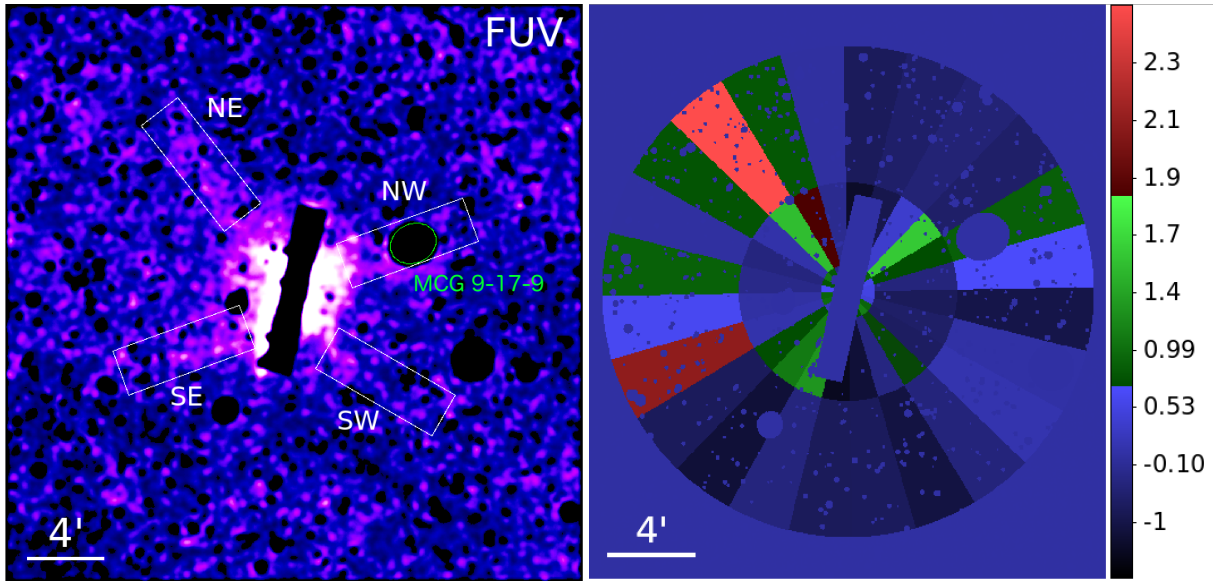


Figure 2. *Left:* Four candidate filaments identified in the *GALEX* FUV image. The maximum apparent extent is about 66 kpc from the galaxy nucleus on the east side. The existence and extent of the northwest filament is unclear because it coincides with the companion galaxy, MCG 9-17-9, located 33 kpc from NGC 3079. *Right:* An azimuthal significance map between $R = 0\text{--}1.25$ arcmin, $1.25\text{--}5.0$ arcmin, and $5.0\text{--}11.25$ arcmin. Each segment is 15° wide. In each ring the color represents $(X - \mu)/\sigma$, where X is the mean value in each segment, μ is the mean for the ring, and σ is the standard deviation of values in the ring. The colors have been biased towards positive deviations.

ACIS-S3 chip. Unfortunately, the longer *Chandra* data sets were obtained after the detector lost most of its soft sensitivity ($E < 1$ keV) due to molecular contaminant buildup on the detector window. Thus, the *Chandra* sensitivity to hot gas is much worse than with *XMM-Newton*. We reprocessed the data using the *Chandra* Interactive Analysis of Observations (CIAO) v4.11 software². We used the standard `chandra_repro` script to filter and grade the events. We then searched for background flares in the light curve for the whole ACIS-S3 chip and excluded periods where the count rate exceeded 3σ above background but found no significant flaring. For the imaging analysis, we reprojected and combined the data sets using the `merge_obs` script. We then identified and removed point sources, and restricted the bandpass to $0.3\text{--}2$ keV.

We also used the $100\ \mu\text{m}$ IRAS and pipeline-processed *Herschel* data in several bands from $70\text{--}160\ \mu\text{m}$ without further processing.

3. AN EXTENDED WIND CONE

We searched for extended emission in the *GALEX* and X-ray images (Figure 1). Both the FUV and X-ray images show the characteristic “X” shape of a biconical wind known to exist around NGC 3079 from previous $H\alpha$ and *Chandra* observations, but the filaments along the wind edges (identified in Figure 2) appear to extend significantly farther than previously known, especially in the FUV image where the eastern

filaments extend at least to 60 kpc from the galactic center. The western filaments appear more truncated but extend at least to 30-40 kpc from the nucleus. Meanwhile, the *XMM-Newton* image shows more extended X-ray emission on the west side with a maximum extent of about 40 kpc, and to 30-35 kpc on the east. The emission may extend farther but the sensitivity declines significantly outside $R \sim 40$ kpc.

3.1. Filaments

The filaments are resolved, with widths exceeding several kpc, although it is difficult to measure their widths owing to the low surface brightness. This also makes it difficult to objectively define filaments. Here we assumed that they simply follow the direction of the brighter emission seen at lower latitudes and defined rectangular boxes 38×13 kpc wide that start at the edge of the brighter reflection nebula reported at lower latitudes in Hodges-Kluck et al. (2016). 7 arcmin in length (38 kpc) appears well matched to the data, but was defined by eye. We measured the fluxes in these boxes, which are given in Table 2 and overlaid on Figure 2.

Detecting low surface brightness emission requires accounting for true variation in the background across the field of view. This variation, rather than Poisson noise, limits the sensitivity. We defined multiple source-free regions around the galaxy at the outskirts of the clipped field of view and measured the mean background in each, as well as the standard deviation among fields. We find $B_{\text{NUV}} = (2.17 \pm 0.01) \times 10^{-3}$ counts s^{-1} pix^{-1} and $B_{\text{FUV}} = (1.44 \pm 0.02) \times 10^{-4}$ counts s^{-1} pix^{-1} , which is consistent with typical *GALEX* values. The fluxes in each filament region were

² <http://cxc.harvard.edu/ciao/>

measured and converted to magnitudes using the AB zero points of 20.08 and 18.82 mag for the NUV and FUV, respectively. The sensitivities imply 3σ upper limits for these boxes of around 20.4 and 21.0 mag for the NUV and FUV, respectively (surface brightness of 23.5 and 24.1 mag arcmin⁻²).

Each of the FUV filaments is clearly detected (for a 3σ threshold). The luminosities range from $2\text{--}5 \times 10^{40}$ erg s⁻¹ and their total luminosity is about 1% of the galaxy FUV luminosity. In contrast, no filaments are detected in the NUV image. The limits imply FUV/NUV luminosity ratios greater than 2 in the NE, NW, and SE filaments, corresponding to FUV–NUV colors of less than 0.4 mag. The SW filament is the weakest detection in the FUV, but it is also not present in the NUV and Figure 2 suggests that it may not extend the full length of the (uniform) 38 kpc box.

Although there are no extended ($R > 15$ kpc) NUV filaments, at lower latitude diffuse UV continuum emission is detected in the FUV, NUV, and the UVOT images. The morphology in each filter agrees well and the measured fluxes are similar. This emission was ascribed to scattering by circumgalactic dust in HK16, indicating that the FUV filaments are something else. However, since we defined the filaments based on the presumption that they continue from spurs seen at lower latitude it is likely that not all of the UV light seen at lower latitude comes from dust.

The measured fluxes show that there is some extended emission in the boxes that we defined, but this does not prove that the filaments are actually coherent structures that trace the “X” shape seen clearly at lower latitudes. The average surface brightness of the NE box (without subtracting background) is 20.4 mag arcmin⁻², which is about equal to the 1σ contour above background. This precludes definitively characterizing the emission as a coherent filament. However, there are two reasons to believe that they do continue the “X” shape.

First, the X-ray image has similar structures that are clearly connected to the lower latitude filaments. This also makes it unlikely that they are filter artifacts. There are some *GALEX* FUV images where either a ghost image or stray light from a bright source exterior to the field causes similar looking patterns, but there are no large-scale structures like this seen in the wider FUV or NUV images.

Second, an azimuthal map gridded in 15° angular segments at several radii (based on the drop-off of the average radial profile) suggests that the “X”-shaped structure continues beyond the inner regions except to the southwest. The right panel in Figure 2 shows the quantity $(X - \mu)/\sigma$, where X is the mean value of the FUV image in each segment, μ is the mean of the X values in that ring, and σ is their standard deviation (*not* the background). There are no filament candidates exceeding 3σ from the mean at any radii, but note that if the “X” shape is real then at least four of the 24 segments

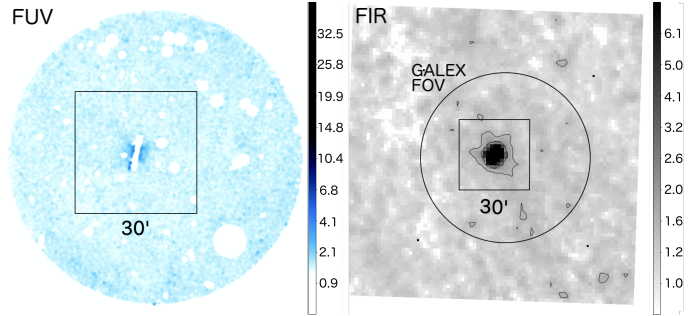


Figure 3. Neither the full *GALEX* FUV image (left) nor the 100 μ m IRAS image (right) support the hypothesis that the filaments are Galactic cirrus. The cirrus in the region of NGC 3079 is neither bright nor strongly spatially variable. Since the galaxy itself is a bright point source at 100 μ m (89 Jy), it is not possible to search for FIR counterparts in the IRAS data. The box shows the region shown in Figure 1, while the circle shows the *GALEX* field of view. The FUV color scale is in units of 10^{-4} counts s⁻¹, while the IRAS color scale is in units of MJy sr⁻¹. Sources detected with greater than 3σ significance have been masked in the FUV image.

will have positive deviations. For instance, if the background annulus has a uniform brightness and there are four equally brighter segments, the limiting $(X - \mu)/\sigma \approx 2.2$. Therefore, the purpose is to show where positive deviations occur, and the map shows that they form an “X” shaped structure in the second ring ($\theta = 1.25$ to 5 arcmin) and this continues to the northwest, northeast, and southeast in the outer ring ($\theta = 5$ to 11.25 arcmin).

3.2. Galactic cirrus

Extensive Galactic cirrus filaments are common in *GALEX* images, so we investigated whether the filaments around NGC 3079 can be explained by cirrus. First, we searched for larger structures in the full 2° FUV image (as well as in the NUV image). There is no clear structure in this wider field in either the FUV (Figure 3) or the NUV. The FUV–NUV colors of less than -0.4 mag in the filament boxes shown in Figure 2 also disfavor cirrus, which tends to have FUV–NUV ~ 0 . In this case, we should have easily detected the filaments in the NUV image.

We then searched for far-infrared (FIR) counterparts, or evidence for filamentary or highly variable FIR emission from cirrus in the region. To investigate the larger-scale emission, we used the IRAS 100 μ m maps³, as reprocessed using the IRIS software (Miville-Deschênes & Lagache 2005). Figure 3 shows the wider field in the FUV and in the FIR, and the cirrus in the region appears somewhat patchy but with variation on larger scales than the filaments. NGC 3079 itself is a FIR source, and the 4' resolution of the IRAS map prevents directly searching for FIR counterparts to the FUV fila-

³ retrieved from <https://irsa.ipac.caltech.edu/data/IRIS/>

Table 2. UV Filament Luminosities

(1)	(2)	(3)	(4)	(5)	(6)	(7)	(8)	(9)	(10)
Filament	R.A.	Dec	P.A.	Length	Width	Filter	m	FUV–NUV	λL_λ
	(J2000)	(J2000)	(deg.)	(arcmin)	(arcmin)		(mag)	(mag)	(10^{40} erg s $^{-1}$)
NE	10:02:32.16	+55:47:15.8	38	7	2.4	FUV	19.8 ± 0.1	< -0.4	3.7 ± 0.4
						NUV	> 20.2		< 1.8
SE	10:02:38.20	+55:37:37.1	110	7	2.4	FUV	19.6 ± 0.1	< -0.7	4.6 ± 0.4
						NUV	> 20.3		< 1.6
NW	10:01:15.92	+55:43:11.2	110	7	2.4	FUV	19.8 ± 0.1	< -0.6	3.7 ± 0.3
						NUV	> 20.4		< 1.5
SW	10:01:24.17	+55:35:57.9	60	7	2.4	FUV	20.4 ± 0.2	< 0.1	2.1 ± 0.4
						NUV	> 20.3		< 1.3

NOTE—Cols. (1) Filament ID from Figure 2 (2-3) Central coordinates (4-6) Region (7) GALEX filter (8) AB magnitude calculated from the GALEX count rate after PSF wing and dust correction (9) FUV–NUV color (10) Luminosity

ments. However, no such counterparts are seen in the higher resolution, but smaller field of view, *Herschel* images of the region (covering 70–200 μm). Since diffuse FIR emission from dust above NGC 3079 itself (“cirrus” in that galaxy) is detected at lower latitudes in the same maps, we estimate that FIR emission from cirrus would be detectable considering the FUV fluxes. Finally, we examined the fields around NGC 3079 that have shallow *GALEX* FUV coverage. We do not find such sharply defined structure within a few degrees of NGC 3079. Thus, we argue that it is very unlikely that the large FUV filaments are due to Galactic cirrus.

They are also not due to scattered light from dust above NGC 3079 itself. At lower latitudes, dust scattering is evident through UV continuum emission in the FUV, NUV, and *Swift* UVOT bands (HK16). The FUV–NUV color of the diffuse, low latitude scattered light is close to 0 mag, whereas $\text{FUV–NUV} < -0.4$ mag for three of the four filaments.

If the FUV filaments are not produced by dust in either the Galaxy or NGC 3079, the most likely light source is emission lines in the filter. Any other continuum source would have to explain the absence of emission in redder bands. There are several possible lines covered by the FUV filter, including C IV $\lambda\lambda 1548, 1550\text{\AA}$, He II $\lambda 1640\text{\AA}$, and [O III] $\lambda\lambda 1661, 1666\text{\AA}$. These lines could be produced either by cooling wind fluid, photoionization, or shock heating.

Without spectroscopic data, it is not possible to use the FUV fluxes alone to distinguish between these possibilities. If such a spectrum were to exist, models such as CLOUDY (Ferland et al. 2017) would be able to do so. For example, the He II line requires hard ionizing photons (at least 54 eV), so a strong He II line would favor shocks or AGN photoionization (cf. Jaskot & Ravindranath 2016). As far as we know, there are no existing models that could use only the FUV flux to determine the origin, but we note that Borthakur et al. (2013) found C IV *absorption* around four starburst galaxies at impact parameters between 100–200 kpc and concluded from

CLOUDY modeling that photoionization from either a starburst or the metagalactic radiation field cannot explain the C IV lines. They instead find that shock heating can do so, provided that much of the wind energy is expended in shock-heating circumgalactic gas. The emission around NGC 3079 is not as extended, but if it connects to unseen ionized gas at larger radii then the same logic would apply.

3.3. Quadrant Stacks

The structure of the FUV and X-ray emission becomes clearer when stacking them in quadrants (Figure 4). We define the abscissa along the galactocentric radius R and the height above the midplane z as the ordinate. Despite the uncertainty about the filaments, the FUV and X-ray emission clearly trace limb-brightened cones. Notably, the edge of the X-ray cone is interior to that of the FUV cone, and the X-ray edge coincides with the brightest part of the FUV limb. This morphology is consistent with the hot wind model from Heckman et al. (1990), in which the hot wind shocks surrounding gas, and this shocked gas is surrounded by a thin layer of rapidly cooling gas visible in optical and UV emission lines. On the other hand, the morphology disfavors strong radiative cooling of the hot wind fluid itself (Thompson et al. 2016), in which case we would expect strongly peaked X-ray emission below the strongest FUV line emission.

We measured scale heights for several types of profiles. These include vertical profiles, radial profiles, and profiles extracted along the edge of the cone (Figure 5). The vertical profiles are averaged within $R < 22$ kpc for the FUV image and $R < 16$ kpc for the X-ray image, based on the extent of the base of the wind. A single exponential profile fits the X-ray data well but not the FUV, whereas the sum of two exponential profiles is a good fit to the FUV data. The scale height in the X-rays is $h_X = 5.1 \pm 0.2$ kpc, which is consistent with one component of the FUV, $h_{\text{FUV},1} = 4.6 \pm 0.5$ kpc.

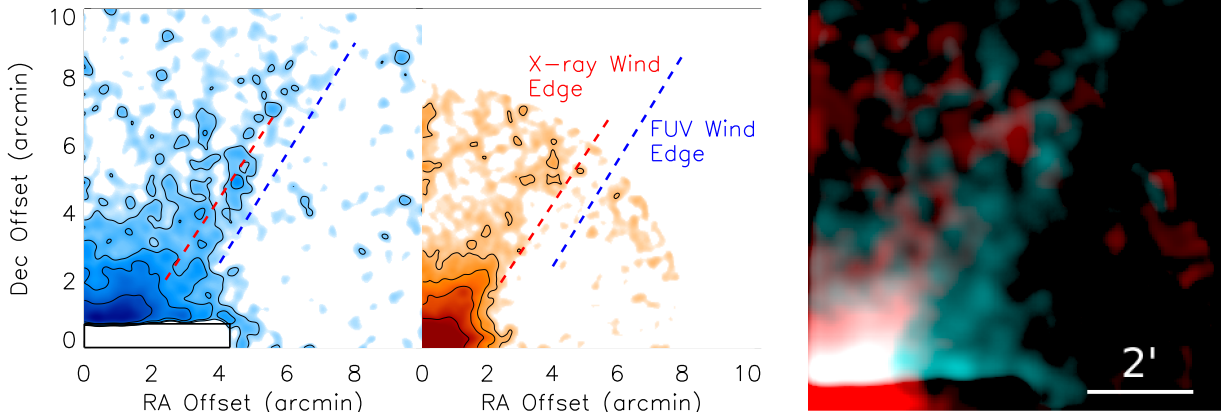


Figure 4. FUV (*left*) and X-ray (*center*) images rotated and stacked into a single quadrant to improve the signal, with the galaxy nucleus at the origin and the galactocentric radius along the x -axis. The images have been clipped at the mean background, smoothed, and overlaid with 2, 4, 8, and 12σ contours. The X-ray image is clipped at a radius of $8'$ because of the lower signal at the image edges. Both images show an extended, conical, limb-brightened wind profile, with the FUV wind extending farther than the X-ray wind in both the horizontal and vertical directions. *Right:* The X-ray (red) and FUV (cyan) quadrant images are clipped at the mean background + 1σ and overlaid. The combination highlights that the X-rays are interior to the FUV emission.

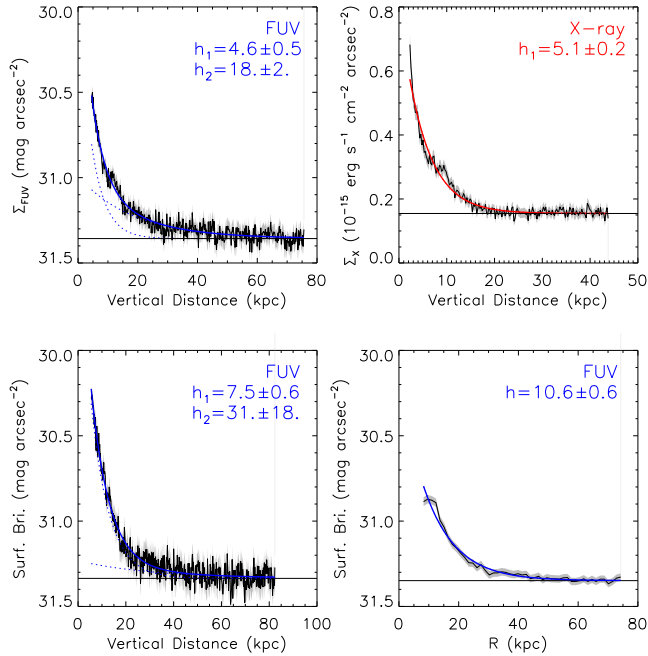


Figure 5. Emission profiles measured from the quadrant stacks (Figure 4), with the best-fit scale heights listed. Scale heights for both components are listed when a double-exponential model is a significantly better fit than a single-exponential model. The data are shown in black (errors in grey) and the best-fit model plotted in blue (FUV) or red (X-rays), with the components plotted as dotted lines. Here we show the FUV vertical (z) profile averaged over $R < 22$ kpc (*top left*), the X-ray vertical profile averaged over $R < 16$ kpc (*top right*), the FUV profile along the wind cone edge as shown in Figure 4 (*bottom left*), and the FUV radial profile (*bottom right*). The large scale heights indicate that the wind is indeed very extended.

However, the second component of the FUV, which accounts for 50% of the flux, has a much larger scale height of $h_{\text{FUV},2} = 18 \pm 2$ kpc. Meanwhile, the FUV profile along the edge of the wind cone (where the S/N is highest) is even more extended, with scale heights $h_{\text{FUV},1} = 7.5 \pm 0.6$ kpc and $h_{\text{FUV},2} = 31 \pm 18$ kpc, while the azimuthally averaged radial profile has $h_{\text{FUV}} = 10.6 \pm 0.6$ kpc.

4. X-RAY PROPERTIES

The soft X-rays provide further insight into the wind through the resolved temperature and density measurements. We measured these from spectra extracted in apertures parallel to the midplane (Figure 6). The vertical sizes of the apertures are based on the need to obtain at least several hundred source counts to measure precise temperatures through most of the wind. There is more than enough signal at lower heights, where both soft and hard X-rays have been previously studied (Strickland et al. 2004; Li et al. 2019), to perform finer gridding, but we defer a more complete analysis of the temperature structure to a future paper (Yukita et al., in prep.).

4.1. Spectral Extraction and Fitting

For each aperture (Figure 6), we masked point sources and extracted spectra from each XMM observation using the XMM-ESAS software (Snowden et al. 2004). The bright superbubble at the center (Cecil et al. 2002) is point-like at the XMM resolution and is also masked. An inspection of the Chandra image shows that the diffuse spectrum from the central aperture predominantly contains flux from the base of the wind, so we include that aperture in the profiles. We also extracted a background spectrum from an annular aperture for each exposure.

Table 3. X-ray Wind Properties

(1)	(2)	(3)	(4)	(5)	(6)	(7)	(8)	(9)	(10)	(11)
Height	Height	Area	kT	APEC norm	0.3-10 keV L_X	R_2	R_1	h	$\bar{n}(Z/Z_\odot)$	Hot Mass
(arcmin)	(kpc)	(arcmin ²)	(keV)	(10 ⁻⁵)	(10 ³⁹ erg s ⁻¹)	(arcmin)	(arcmin)	(arcmin)	(10 ⁻³ cm ⁻³)	(10 ⁶ M_\odot)
-3.9	-21.5	12.5	0.28±0.12	<0.2	<0.2	3.1±0.3	2.6±0.8	1.6	<0.15	<5
-2.4	-13.2	9.3	0.28±0.02	0.80 ^{+0.06} _{-0.09}	0.7±0.1	1.9±0.2	1.5±0.4	1.2	0.6±0.2	8±3
-1.2	-6.6	9.5	0.36±0.02	2.4±0.1	2.4±0.1	1.4±0.2	1.1±0.4	1.2	1.4±0.3	10±3
0	0	8.0	0.40±0.01	6.8±0.4	4.8±0.3	1.1±0.3	0.5±0.2	1.2	2.0±0.6	18±7
1.2	6.6	9.5	0.33±0.03	2.2 ^{+0.2} _{-0.1}	2.1 ^{+0.2} _{-0.1}	1.4±0.2	1.2±0.4	1.2	1.3±0.3	9±2
2.4	13.2	9.7	0.29±0.02	0.9±0.1	0.8±0.1	2.0±0.2	1.5±0.3	1.2	0.6±0.2	7±2
3.9	21.5	13.8	0.27±0.02	0.5±0.1	0.4±0.1	3.5±0.3	2.1±0.6	1.6	0.3±0.1	11±5

NOTE— Cols. (1-2) Average box height above midplane (3) Unmasked area for spectral extraction (4-6) Best parameters for an isothermal model (7-9) Best parameters for the average cylindrical shell at each height (10) Mean density in each shell. The errors assume a 30% error in R_1 , except for the central aperture where we assume a 50% error because source masking makes it more difficult to determine (R_2 is well defined and h is fixed). The error bar for kT in the case of the density upper limit corresponds to allowed temperatures if the source is there.

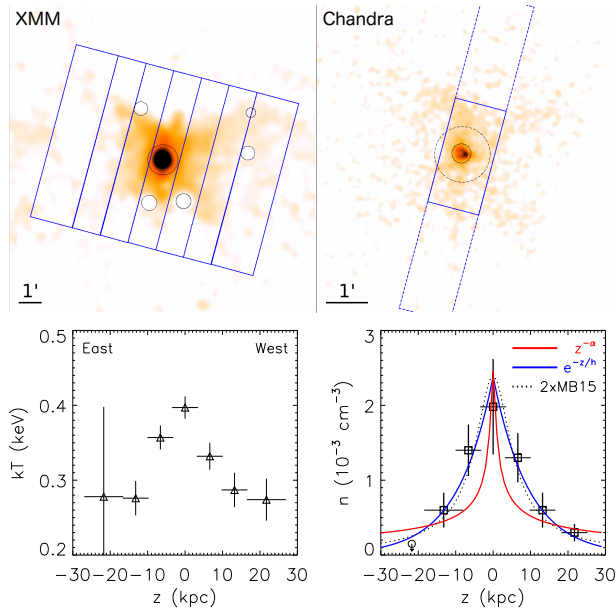


Figure 6. *Top Left:* The temperature and density were inferred from model fits to spectra extracted from the blue rectangular regions, shown overlaid on the soft X-ray image with point source masks marked in black. *Top Right:* The bright superbubble is unresolved with XMM and its mask (dashed circle) covers much of the central region, so we measured the flux and emission measure from the *Chandra* image where the bubble (solid circle) is resolved (see text). *Bottom Left:* The temperature profile measured from these spectra, based on fitting isothermal plasma models to the data. The error bars are the 90% credible interval. *Bottom Right:* Mean density inferred from the emission measure and a cylindrical wind model (see text). The red and blue lines are the best-fitting power-law and exponential disk models, respectively, while the dotted line represents a shock compression of the Milky Way halo model (Miller & Breghan 2015) by a factor of two.

All spectral fitting was performed with *Xspec* v12.10.1, and the spectra from a given region were fitted jointly rather than using a co-added spectrum. We used the APEC thermal plasma model with the Asplund et al. (2009) solar abundance table to model hot gas. If the X-rays come from shocked gas, APEC may not be appropriate as it is based on collisional ionization equilibrium. However, the equilibrium timescales are short relative to both the radiative lifetime and the time for the wind to expand at least to 50 kpc, so the hot gas at the wind edge is likely close to equilibrium.

Instead of subtracting a scaled background spectrum, we fitted the background spectrum and used the best-fit model as a fixed component when fitting the source spectra. We adopted a model for the soft X-ray background that includes a thermal component for the Local Hot Bubble and the Galactic hot halo, and a power law with photon index $\Gamma = 1.46$ for the cosmic X-ray background (PHABS(APEC+APEC+POW)), in addition to instrumental lines and continua⁴. We obtained a good fit with typical values ($kT_1 = 0.1$ keV and $kT_2 \approx 0.25$ keV).

The source model is an absorbed, isothermal plasma (PHABS*APEC), where the column density of the absorbing material is fixed at the Galactic value $N_H = 9 \times 10^{19}$ cm⁻². We fix the metallicity (Z/Z_\odot) at the solar value for these fits, but the signal is sufficient to measure the O/Fe ratio (although not the abundances of individual elements), as explored below.

4.2. Temperature, Density, and Abundance Profiles

The best-fit temperatures, APEC normalizations, and luminosities are given in Table 3. The X-ray surface brightness is asymmetric from east to west across the disk, possibly be-

⁴ described in the ESAS manual and particular to each observation; see <https://heasarc.gsfc.nasa.gov/docs/xmm/esas/cookbook/xmm-esas.html>

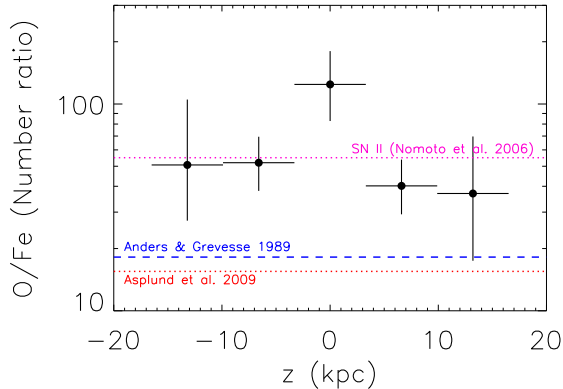


Figure 7. O/Fe number density as a function of height above the midplane. The O and Fe values are measured using an isothermal VAPEC model using Asplund et al. (2009) for solar abundances. The outermost bins are not shown because the signal in the spectrum is too low to measure abundances. The expected ratios for Type II SNe from Nomoto et al. (2006) and the Sun (Anders & Grevesse 1989; Asplund et al. 2009) are shown for reference. The outflowing material is more consistent with enrichment from Type II SNe, in agreement with a prior Suzaku study by Konami et al. (2012).

cause of the interaction of the wind with companion galaxies on the west side. There is insufficient signal in the easternmost bin to robustly measure the temperature, although the wind is formally detected.

The APEC normalization encodes the emission measure, $EM \propto \int n_e n_H dV$. To obtain \bar{n} we assume a volume and that $n_e = n_H$. Based on the limb-brightened morphology, in each aperture except at the midplane we fitted a simple cylindrical shell model with constant density in the shell to the surface brightness to obtain the emitting volume. This model yields the average inner and outer radii R_1 and R_2 , while the height h is that of the aperture. Since we have fixed the metallicity at Solar, we derive the quantity $\bar{n}(Z/Z_\odot)^{1/2}$. A summary of the measured properties is given in Table 3 and the temperature and density profiles are shown in Figure 6.

The central aperture is a special case because the XMM superbubble mask covers much of the emission of interest (Figure 6). Thus, to estimate the density we first obtain R_1 , R_2 , and the temperature from the XMM data. Then, we measure the 0.3 – 2 keV Chandra count rate in the region using a more appropriately sized mask for the superbubble, whose emission is associated with radio lobes and is not part of the larger X-shaped structure (Irwin & Saikia 2003). The Chandra response files are used to convert this count rate into an emission measure, assuming the best-fit XMM APEC temperature, and the emission measure is converted to density using the same assumptions as for the other apertures.

The profiles indicate a decline in temperature as well as density. The temperature appears to flatten near $kT \sim$

0.28 keV, but in the outer regions the signal is low and the fit may be biased by the Galactic background, which has a similar $kT \sim 0.25$ keV. The decline of the density is more certain. The inferred density is weakly sensitive to the volume assumed in the shell model, but R_2 is tightly constrained to within 1.5 kpc. R_1 is less constrained, but a filled cylindrical model is strongly ruled out by the limb brightening and the uncertainty in the quantity $R_2^2 - R_1^2$ is dominated by that in R_2 .

The density profile cannot be described by a power-law model, where $n(z) \propto z^{-\alpha}$ (Figure 6). The best-fit $\alpha = 0.26 \pm 0.05$ is obviously a poor fit to the data. An exponential profile, where $n(z) \propto e^{-z/h}$, is a good match with a scale height $h = 10 \pm 3$ kpc. This is consistent with the ≈ 5 kpc scale height from the surface brightness profile, which scales as n^2 . For a symmetric biconical wind with an opening angle of 30° , the best-fit profiles imply a total mass within 30 kpc of $\approx 7 \times 10^7 M_\odot$ for the X-ray-emitting gas.

Finally, Figure 7 shows the O/Fe ratio as a function of height above the midplane. This ratio was determined by fitting the spectra in each box with an isothermal VAPEC model in which the abundances of the α elements and Fe-group elements were allowed to float relative to the solar values. The number ratio was then calculated using the solar abundance table, for which we adopted that of Asplund et al. (2009). We then compared the values to the predictions for Type II SNe enrichment (Nomoto et al. 2006) and the solar abundance. The measured values are a better match to the Type II SNe, indicating that the outflow is enriched and powered by these SNe.

There are several caveats. First, for the temperature of NGC 3079 and the energy resolution of the MOS and pn, the oxygen abundance is the best constrained and the difference between Asplund et al. (2009) and other commonly used tables is significant for oxygen. However, using another table with VAPEC (such as Anders & Grevesse 1989) would tend to increase the O/Fe ratio rather than bring it closer to the Solar value. Second, the signal in the spectra is too low to rule out solar abundances for regions well above the disk. Indeed, the outermost bins lack the signal to get a meaningful fix on O/Fe at all and are not shown. Third, if the wind has a complex temperature structure then the abundance values are likely biased. We will explore these issues in a forthcoming, detailed analysis of the X-ray spectra (Yukita et al., in prep.).

5. THE EXTENDED WIND

NGC 3079 is a well known superwind galaxy and the features described above are new only in their extent, as they continue the X-shaped structure previously reported (Heckman et al. 1990; Cecil et al. 2001). Thus, we conclude that the X-ray, and especially FUV, emission are part of an extended galactic wind on a scale similar to that seen in the

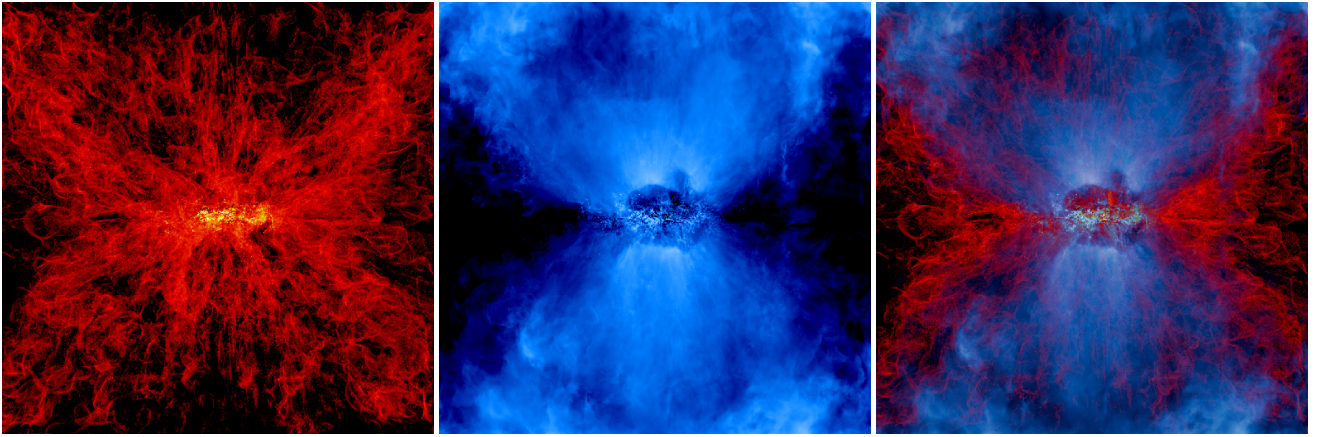


Figure 8. Projected emission from a simulated galactic wind from Tanner et al. (2016). The three panels show H α emission (left), which has the same morphology as FUV line emission, soft X-ray emission (center) from the shocked wind, and the superposition of X-rays on H α (right). Note that the X-rays are somewhat edge-brightened, mostly “fill” the wind cone at lower latitudes, and are interior to the strongly edge-brightened H α emission, similar to what is seen in NGC 3079. Each box is 1 kpc on a side, but see text for discussion.

galaxy Makani by Rupke et al. (2019). This extended emission provides clues to the formation of the wind, for which there are multiple theories (reviewed by Zhang 2018).

In particular, the line emission (primarily H α) was interpreted by Heckman et al. (1990) in the context of a hot wind. In this case, superheated gas ($T > 10^8$ K) in the starburst nucleus adiabatically expands into the ambient medium (Chevalier & Clegg 1985; Strickland & Stevens 2000). This drives a wind with velocity $v_{\text{wind}} > 1000$ km s $^{-1}$, with some gas at lower and higher velocities. For a truly adiabatic wind, the asymptotic $v_{\text{wind}} > 3000$ km s $^{-1}$. The actual velocity will depend on the wind evolution, which remains the subject of active research (see Zhang 2018). At first, the wind inflates a bubble with a forward shock whose advance speed is faster than the wind fluid, leading to a wind shock. The cooled wind fluid is reheated at the shock to $T \sim 10^6 - 10^7$ K, so the soft X-rays come from the sheath of shocked wind fluid around the “free” wind. Outside of the wind is the shocked CGM, which emits primarily optical and UV lines. Mixing of the shocked wind and shocked ambient medium through Rayleigh-Taylor instabilities also heats the cooler gas and powers the optical and UV emission.

The morphology of the extended wind in NGC 3079 is in qualitative agreement with this structure, with both the X-rays and FUV forming edge-brightened cones and the X-rays interior to the FUV. We compared the FUV and X-ray morphology to more recent numerical simulations of a hot wind from Tanner et al. (2016), which follows and is in agreement with earlier work that pioneered fractal gas distributions by Cooper et al. (2008). One such model is shown in Figure 8 and the X-ray and H α (a proxy for FUV) emission look very similar to what we find in NGC 3079 as shown in Figure 4. The authors used the magnetohydrodynamic Athena code (Stone et al. 2008) with radiative cooling and photo-

electric heating prescriptions. The model seen in Figure 8 shows a projection from 1.5 Myr after the start of the starburst with a SFR of $1.7 M_{\odot} \text{ yr}^{-1}$ and an energy injection rate of 7.5×10^{41} erg s $^{-1}$. This corresponds to a central mass-loading of $\beta \approx 2$, while the SNe thermalization efficiency is fixed at $\epsilon \equiv 1$. While this model uses parameters similar to M82 and not NGC 3079, the similarity of the structure to what we see in NGC 3079 is encouraging.

We note that the Tanner et al. (2016) simulations include cool, molecular gas, which could, in principle, affect the partitioning of wind energy relative to the Heckman et al. (1990) hot wind model. However, an inspection of the simulations presented here shows that the hot gas contains the bulk of the energy and that the inclusion of molecular gas represents a small perturbation to the energy balance, even though the cold phase contains a substantial fraction of the mass.

Thus, we investigate the wind using the X-ray and FUV data *as if it is produced by a hot wind*. This enables us both to assess whether the data are indeed consistent with a hot wind (i.e., whether interpreting the data in this model leads to sensible results), as well as the impact of this wind on the galaxy and its environs. The values we can infer in this framework are the FUV/X-ray luminosity ratio, the shock velocity (a lower limit on the wind velocity), and the mass-loading factor. We defer a more detailed study of the thermal properties of the wind to a separate paper (Yukita et al., in prep.).

First, we note that the same basic wind structure has also been proposed for AGN-driven winds (Faucher-Giguère & Quataert 2012), and NGC 3079 hosts a Compton-thick AGN (Iyomoto et al. 2001) with an absorption-corrected 2–10 keV $L_X \approx 10^{42}$ erg s $^{-1}$ (La Caria et al. 2019). Assuming a bolometric correction of 15–25 from Vasudevan & Fabian (2007), the true luminosity is a few $\times 10^{43}$ erg s $^{-1}$, or about 1 SN per year. This is sufficient to drive a galactic wind. The XMM

and *GALEX* data alone are insufficient to distinguish between a starburst or AGN origin (see [Sebastian et al. 2019](#), for a discussion of the wind at smaller radii). Hereafter, we refer to the hot wind model without regard to the initial power source, except where noted.

5.1. Luminosity Ratio

The FUV/X-ray luminosity ratio is consistent with the hot wind model. The 0.3–10 keV X-ray luminosity associated with the wind is 1.1×10^{40} erg s⁻¹ (Table 3), but about half of this comes from the disk region where we cannot isolate the wind FUV emission due to extinction and scattered light. The extraplanar X-ray luminosity is about 6×10^{39} erg s⁻¹, while the FUV filament luminosity is 23 times higher at 1.4×10^{41} erg s⁻¹, after correcting for the PSF wings of the galaxy. The disparity intensifies with height. The luminosity ratio should be high in the hot wind model (up to 100; [Tanner et al. 2016](#)), as shock-heating and mixing can heat entrained clouds and the CGM to $T \sim 10^5$ K, where the C IV ion fraction is highest, without significantly depleting the thermal energy of the shocked wind.

This is also consistent with the conclusion from [Borthakur et al. \(2013\)](#) that FUV absorption around starburst galaxies is from collisionally ionized gas. Without spectroscopic information we cannot strongly rule out ionization from the AGN or starburst, but both are disfavored here.

A quasar or more modest AGN outburst could easily ionize the extended wind. For example, [Kreimeyer & Veilleux \(2013\)](#) report giant ionization cones around a quasar, and [Bland-Hawthorn et al. \(2019\)](#) show that activity from Sgr A* likely ionized material in the Magellanic Stream, 75 kpc away from the Galaxy. However, measurements in the prominent superbubble close to the disk ([Cecil et al. 2001](#)) find an [O III]/H α ratio of less than 0.4, which is smaller than expected for an AGN ([Robitaille et al. 2007](#)) and more consistent with a starburst. The AGN is also low luminosity and possibly obscured, so ionization of the extended filaments appear to require a more luminous episode within the past 0.2 Myr, based on the light-travel time to the edge of the nebula. More data are needed to confirm or rule out this possibility.

Despite the soft ionizing spectrum implied by the superbubble line ratios, the starburst is a poor candidate for ionizing the extended nebula. A starburst relies on SNe to power the wind, but the ionizing flux from a given star cluster is highest at very early times before many SNe have exploded. Thus, the starburst would need to continually generate massive, young star clusters and sustain a nuclear wind.

5.2. Shock Velocities

In the hot wind paradigm, the wind speed can be estimated from the temperature profile. If the wind rams into adiabatically cooled wind fluid at the wind head or entrained cool

gas then the shock will be strong, with $kT \approx \frac{3}{16} \mu v_{\text{wind}}^2$. The temperature profile in NGC 3079 then implies that v_{wind} decreases from about 570 km s⁻¹ near the disk to 475 km s⁻¹ at 20 kpc above the disk. The outermost points hint that the temperature profile flattens.

Alternatively, the X-ray emission could be a mixture of shocked wind fluid and shocked ambient CGM. Galaxies like NGC 3079 are believed to have extensive hot CGM with a temperature near or above the virial temperature ([Bregman et al. 2018](#)), $kT_{\text{vir}} \approx \frac{5}{3} \mu m_p G M_{\text{vir}} / r_{\text{vir}}$, where $M_{\text{vir}} \sim 10^{12} M_{\odot}$ is the mass enclosed in the virial radius and $r_{\text{vir}} \sim 250$ kpc for an L_* galaxy like NGC 3079. This leads to $kT_{\text{vir}} \sim 0.18$ keV, or 2×10^6 K. In this case, the strong shock limit for the Rankine-Hugoniot shock jump conditions may not apply, since even a 1000 km s⁻¹ wind (near the predicted maximum for the adiabatic case) would only shock the CGM at Mach 4. Adopting 0.2 keV as a rough estimate for the presence of a putative hot halo, the sound speed is $c_s \approx 230$ km s⁻¹ and the temperature profile (Figure 6) implies Mach numbers of 2.1 to 1.5, or $v_{\text{shock}} \sim 350 - 480$ km s⁻¹. This is about 20% smaller than for the strongly shocked case.

The density profile is independent of the temperature and provides a constraint if we again assume a form for the hot halo. NGC 3079 has a mass similar to that of the Milky Way ($v_{\text{circ}} \approx 208$ km s⁻¹ compared to 240 km s⁻¹ for the Galaxy), so we consider the hot CGM model for the Milky Way from [Miller & Bregman \(2015\)](#), which is a modified β model with $n(r) = n_0 (r/r_c)^{-3\beta_{\text{CGM}}}$ for $r \gg r_c$, where where $n_0 r_c^{3\beta_{\text{CGM}}} = 0.0135$ cm⁻³ kpc^{3 β_{CGM}} and $\beta_{\text{CGM}} \approx 0.5$. The core radius is not independently determined because of confusion towards the Galactic center, so we fixed $\beta_{\text{CGM}} \equiv 0.5$ and determine the r_c and compression factor (Mach number) that best matches the NGC 3079 density profile to the Milky Way density profile. We find a good fit (Figure 6) for $r_c \sim 6$ kpc and a compression factor of ≈ 2.0 , leading to an average Mach 2.4 shock.

Of course, both estimates are speculative given the absence of measurements of a hot halo around NGC 3079. Nevertheless, should such a hot halo exist one could still infer the wind velocity from kT as though the X-rays in the wind come from shocked gas. This puts a lower limit on the wind velocity of about 350 km s⁻¹.

Finally, we note that while the [Miller & Bregman \(2015\)](#) model provides a good match to X-ray emission- and absorption-line data from around the Galaxy, there are several competing models that can qualitatively change the expected wind morphology and shock speed. For example, [Faerman et al. \(2017\)](#) use a combination of absorption and emission data to infer a much more massive halo, while [Gupta et al. \(2012\)](#) and [Nicastro et al. \(2016\)](#) use absorption data sets to describe hot halos that contain upwards of $10^{11} M_{\odot}$. If we perform the same exercise as above for the

Faerman et al. (2017) model, which has the advantage of being analytical, we find that it overpredicts the observed density above about 10 kpc while having a similar temperature. If such a massive halo existed around NGC 3079, the high density would likely crush the wind, perhaps turning it into a bubbling plume. However, we note that this does not constitute evidence for or against any Milky Way halo model (for a discussion of those models, see Bregman et al. 2018).

5.3. Mass Loading and Energetics

We can estimate the mass-loading factor for gas that reaches high latitudes (here defined as $z > 2$ kpc) by comparing the estimated $5 \times 10^7 M_\odot$ in X-ray emitting gas above this height (Table 3) and the size of the wind to the SFR, assuming a starburst origin. The 60 kpc size of the wind and the inferred wind velocity of $\sim 500 \text{ km s}^{-1}$ places a lower bound on the lifetime of 120 Myr (if the X-rays trace shocked gas, the wind cone expands more slowly). Since the average density of hot gas implies a cooling time of hundreds of Myr (assuming Solar metallicity and the collisional equilibrium cooling functions from Gnat & Sternberg 2007), the X-rays should trace the energy deposited by the shocked wind over its history.

The 120 Myr limit implies an outflow rate to high latitudes of $\dot{M} < 0.4 M_\odot \text{ yr}^{-1}$. If we further assume that the current $\text{SFR} \approx 2.6 M_\odot \text{ yr}^{-1}$ (Yamagishi et al. 2010) is the average over that period and that the central mass-loading factor is $\beta = 1$, then the high-latitude $\beta_{\text{hl}} < 0.2$. Note that even if we assume a younger wind (60 Myr at a terminal velocity of 1000 km s^{-1}), $\beta_{\text{hl}} < 0.4$. However, β_{hl} will be increased by the mass in the swept-up shell that is accelerated outwards. We do not know the photoionization fraction, so we have a poor constraint on the mass represented by the FUV emission. If all FUV-emitting material is shock-heated and accelerated outwards, then it is possible for β_{hl} to approach unity.

The mass and inferred shock speed lead to a kinetic energy of about 1×10^{56} erg. For a 120 Myr lifetime, the kinetic luminosity of the high-latitude wind is less than $2.7 \times 10^{40} \text{ erg s}^{-1}$. If we further assume that 1% of the stellar mass becomes SNe, that each SN contributes 10^{51} erg, and that the thermalization efficiency is unity, then the average kinetic luminosity of the starburst is $8 \times 10^{41} \text{ erg s}^{-1}$. This is consistent with a Starburst99 (Leitherer et al. 1999) population synthesis model for the same input SFR at solar metallicity. The average wind kinetic luminosity is only 3.4% of this value. We have not considered the UV contribution, but it will be small. Strongly shocked gas transforms roughly half the kinetic energy into thermal energy, so even with zero photoionization and ten times more mass in warm gas the contribution will be smaller than from the X-ray emitting gas.

The 120 Myr estimate from assuming a terminal wind velocity of 500 km s^{-1} is in tension with other estimates for the starburst age. Yamagishi et al. (2010) found that the gas-to-dust ratio is rather high and concluded that NGC 3079 is early in its starburst phase. Meanwhile, Konami et al. (2012) defined a region with α -enhanced abundances (an annulus centered at 4.5 kpc from the nucleus) and used the hydrodynamic model of Tomisaka & Bregman (1993) to estimate the expansion velocity, and thus the age. They arrived at a velocity of about 450 km s^{-1} , which is consistent with our shock-inferred velocity but leads to a starburst age of 10 Myr. This is consistent with the age of the well known superbubble Cecil et al. (2001).

There are a few ways to reconcile the two ages. The 120 Myr value assumes that the overall wind terminal velocity is 500 km s^{-1} , which is substantially below the 3000 km s^{-1} adiabatic solution or 1000 km s^{-1} from Strickland & Stevens (2000). Gas that remains this fast to large radii will be hard to see and must not strongly interact with the surrounding medium, or it would dissipate its kinetic energy. Thus, there may be a very fast spine to the wind with shocks at the edges from lower velocity components. However, for a maximal expansion velocity of 3000 km s^{-1} , the starburst or AGN outburst would still need to be at least 20 Myr old.

Alternatively, the extended structure may be a relic from a prior outburst. If it were a jetted AGN outburst, we would expect to see low-frequency radio synchrotron emission from aging cosmic rays. The 326 MHz radio continuum maps in Irwin & Saikia (2003) reveal a large radio halo but no structures close to the scale of the wind described here. Instead, the well known radio lobes occur on much smaller scales near the disk, and larger extensions that may indicate a prior outburst are about 10 kpc in size.

Finally, the shocked wind interpretation that we applied above may be wrong. A different source for the X-rays and FUV would lead to different constraints on the wind speed. Reconciling the young starburst with the large filaments is a puzzle that remains to be solved.

5.4. A Hot Wind?

The FUV and X-ray morphology, FUV/X-ray luminosity ratio, and small β at high latitudes are consistent with a fast, non-radiative wind powered by superheated gas. On the other hand, the inferred velocity and kinetic energy are smaller than expected for an adiabatic wind. In such a wind, $v_{\text{wind}} \sim 1000 \epsilon^{1/2} \beta^{-1/2} \text{ km s}^{-1}$, where $\epsilon \in [0, 1]$ is the SNe thermalization efficiency and β is the mass-loading factor. To reconcile this velocity with the $\sim 500 \text{ km s}^{-1}$ implied by the X-ray temperature requires $\epsilon \approx 0.25$ or a large $\beta = 4$. For a powerful wind, a large β is more likely than a small ϵ , and the high latitude $\beta_{\text{hl}} < 0.2$ would mean that very little of

the mass makes it to high latitudes and the wind ceases to be adiabatic at lower latitudes. This scenario is supported by the density profile, which is inconsistent with the R^{-2} profile (or any power-law model) expected from the adiabatic model. Since the shocked wind is produced by the wind overrunning itself, the density profile from the X-rays should be (to first order) a compressed version of the underlying profile.

It would not be surprising for a wind that begins with adiabatic free expansion to leave the adiabatic regime after several kpc, so our main concern is whether inferring v_{shock} from kT is still valid in this case, i.e., whether the high latitude wind is still fast and non-radiative. Strickland & Stevens (2000) found that an initially adiabatic wind will not remain so but that X-rays still predominantly come from shocked gas, with some reasonable parameter sets (based on M82) yielding an average wind speed of $v_{\text{wind}} \sim 500 \text{ km s}^{-1}$. This suggests that kT should roughly map to v_{wind} even when the adiabatic approximation breaks down.

However, there are two more problems for the hot wind. First, the density profile suggests that the FUV and X-ray emission are coming from shocked CGM rather than shocked wind, or that the shocked wind contributes little mass and mixes efficiently with the CGM. Secondly, the kinetic energy implied by the velocity and density places an upper bound on the kinetic luminosity of $E < 2.7 \times 10^{40} \text{ erg s}^{-1}$, which is less than 3.4% of the total starburst kinetic luminosity. In contrast, hot wind models hold that most of the wind energy is in hot gas.

In summary, the morphology and luminosities are consistent with a fast, non-radiative wind that shock heats the surroundings, but that carries only a small fraction of the starburst or AGN energy, likely due to carrying a small amount of mass. In this case, the remainder of the energy would accelerate cooler gas at lower latitudes in an action like a galactic fountain. Alternatively, if a collimated wind propagates far beyond the 60 kpc limit to the FUV emission, then the forward shock may effectively cease to exist in the tenuous CGM and the X-rays could represent only a small fraction of the energy carried by the wind. This would be the case if there is a 3000 km s^{-1} component that persists to large radii.

5.5. Impact

Regardless of the nature of the wind, we can draw several conclusions about its impact on the galaxy. First, the $5 \times 10^7 M_{\odot}$ in hot, high-latitude gas implies that the wind is not effective at removing mass from the galaxy. If the starburst is self-limiting due to feedback, the heating and recycling occurs at radii of at most a few kpc. The masses and limits from above lead to a rate of $< 1 M_{\odot} \text{ yr}^{-1}$ for removing gas to $\gtrsim 2 \text{ kpc}$ (deep radio observations place limits on the neutral hydrogen in the wind; Shafi et al. 2015). The SFR is $\approx 2.6 M_{\odot} \text{ yr}^{-1}$, so much more gas will be locked in stars

than completely removed from the galaxy by the end of the starburst.

Secondly, the wind may indeed heat the intergalactic medium, assuming that kT maps to v_{shock} . At 500 km s^{-1} between 1-30 kpc from the disk, the wind very likely exceeds the escape velocity. A conservative estimate for the escape velocity within the disk, $v_{\text{esc}} \sim 3v_{\text{circ}} = 625 \text{ km s}^{-1}$, implies a lower $v_{\text{esc}} < 550 \text{ km s}^{-1}$ at a height of 1 kpc for an exponential disk model. Most of the X-rays from the central bin come from at least this height (in large part due to absorption in the edge-on disk). At larger heights, a disk model may not be appropriate. NGC 3079 has a similar stellar mass and v_{circ} to the Milky Way, so if we adopt the RAVE Milky Way mass (Piffl et al. 2014) and a NFW profile, the escape velocity at 20 kpc is $250 - 300 \text{ km s}^{-1}$. Hence, the $< 1 M_{\odot} \text{ yr}^{-1}$ expelled to $> 2 \text{ kpc}$ from the disk is also the limit on gas unbound from the galaxy.

Thirdly, the wind has a strong impact on the CGM. The density profile is incompatible with the adiabatic approximation ($n(r) \propto R^{-2}$) and this suggests that many of the X-rays come from shock-compressed CGM or entrained clouds rather than strictly shocked wind. The 10 kpc scale height of the best-fit exponential profile suggests that it is mostly CGM, since most cold ISM is not expelled to high latitudes. 10 kpc is rather large for a relaxed, disk-like atmosphere around a galaxy, but the extended CGM may follow a spherical distribution like the β model, in which $n(r) \propto (1 + (r/r_c)^2)^{-3\beta_{\text{CGM}}/2}$. This is a good fit to the data for $r_c \sim 6 \text{ kpc}$ when $\beta_{\text{CGM}} \equiv 0.5$ (Figure 6) regardless of whether the working surface is warm or hot CGM.

If the working surface is warm CGM then only a small fraction of the mass is heated, but all of the CGM traced by the FUV is compressed, which may trigger condensation and infall of clouds. On the other hand, if the working surface is hot CGM then the kinetic luminosity of $\dot{E} < 2.7 \times 10^{40} \text{ erg s}^{-1}$ implied by the hot gas is likely substantially higher than the $\text{few} \times 10^{39} \text{ erg s}^{-1}$ radiative luminosity of a normal hot halo in an L_* galaxy (Li & Wang 2013) and can prevent cooling. Even if the leading edge of the wind expands 10 times slower than its internal speed, the high-latitude mechanical luminosity is more than enough to balance radiative cooling. The other major impact on the hot CGM is through displacement. Although the opening angle is only about 30° , the hot mass in the wind cone is similar to that expected from the Miller & Bregman (2015) Milky Way model within a radius of about 8 kpc. Thus, as the wind evolves and eventually dissipates the hot and expanding cone will continue to stir up the CGM for a long time.

The wind also likely affects the companion galaxy, NGC 3073. Shafi et al. (2015) argued that an ambient hot density of $1.3 \times 10^{-2} \text{ cm}^{-2}$ is needed to explain the cometary H I tail of NGC 3073 through ram-pressure stripping due

to infall. The hot density profile shows that the hot density around NGC 3073 (beyond 25 kpc from NGC 3079) is at least an order of magnitude too small. In contrast, the ram pressure from $v_{\text{wind}} \gtrsim 500 \text{ km s}^{-1}$ and a density of $\sim 5 \times 10^{-4} \text{ cm}^{-3}$ is likely, but barely, sufficient to produce the tail based on the arguments in Irwin et al. (1987). If NGC 3073 is in the middle of the wind, then v_{wind} could be substantially higher, which would strengthen the case for wind stripping.

6. SUMMARY AND CONCLUSIONS

We report the discovery of FUV emission around NGC 3079 at least to 60 kpc from the nucleus, with X-rays detected to at least 30 kpc. The FUV and X-ray emission is biconical and edge-brightened, with the X-rays interior to the FUV. We rule out dust scattering as the source of the FUV light, which makes line emission the most likely candidate. Meanwhile, the X-ray spectrum is consistent with line-dominated thermal emission from a plasma near collisional ionization equilibrium. We measured the temperature and density of the hot gas. Both decline with height, with a possible flattening in the temperature beyond 20 kpc at $kT \approx 0.27 \text{ keV}$. The total X-ray emitting mass is about $5 \times 10^7 M_{\odot}$.

The extended FUV and X-ray emission connects smoothly to emission already well known at lower latitudes, and is part of a galactic superwind. The morphology of the FUV and X-ray emission suggest a hot, non-radiative wind in which the emission is produced by shock heating (rather than radiative cooling of upstream wind fluid). Assuming this to be the case, the X-ray temperatures imply wind velocities of $\sim 500 \text{ km s}^{-1}$, which is sufficient to escape the galaxy. However, the density profile and low mass and kinetic energy in hot gas are inconsistent with a hot wind model, so the nature of the wind must be further explored (Yukita et al., in prep.).

The wind carries little mass and less kinetic energy than expected for a hot wind, but will nonetheless significantly heat

the CGM and perhaps the IGM. It remains an open question whether winds, or how much of them, can escape the galaxy's potential. If the extended emission in NGC 3079 traces shock-heated gas, then the wind is able to maintain high velocities at least to 20% of the virial radius, and will encounter less resistance the farther it goes.

The extended wind reported here is one of just a handful of highly extended winds, with others including NGC 6240 (Yoshida et al. 2016) and Makani (Rupke et al. 2019). NGC 3079 is by far the closest, and presents a good target for deep $H\alpha$ mapping. The serendipitous discovery of the extended filaments in the deep *GALEX* data suggests searching for extended emission around other nearby, well developed starbursts, such as NGC 253 or M82. These galaxies are even closer, so a very wide field is required.

The other work that is required is modeling of the evolution of winds in realistic CGM environments and over long times. This is difficult because the high resolution required to resolve instabilities and mixing makes a large box computationally expensive. However, adaptive mesh refinement and similar techniques for concentrating resolution where it is needed may make these models feasible.

ACKNOWLEDGMENTS

We thank the anonymous referee for a careful and helpful report which improved this paper. M. Y. gratefully acknowledges support through NASA grant 80NSSC18K0609. This research has made use of the NASA/IPAC Extragalactic Database (NED) which is operated by the Jet Propulsion Laboratory, California Institute of Technology, under contract with the National Aeronautics and Space Administration.

REFERENCES

- Anders, E., & Grevesse, N. 1989, *GeoCoA*, 53, 197, doi: [10.1016/0016-7037\(89\)90286-X](https://doi.org/10.1016/0016-7037(89)90286-X)
- Anderson, M. E., & Bregman, J. N. 2014, *ApJ*, 785, 67, doi: [10.1088/0004-637X/785/1/67](https://doi.org/10.1088/0004-637X/785/1/67)
- Asplund, M., Grevesse, N., Sauval, A. J., & Scott, P. 2009, *ARA&A*, 47, 481, doi: [10.1146/annurev.astro.46.060407.145222](https://doi.org/10.1146/annurev.astro.46.060407.145222)
- Bland-Hawthorn, J., Maloney, P. R., Sutherland, R., et al. 2019, *ApJ*, 886, 45, doi: [10.3847/1538-4357/ab44c8](https://doi.org/10.3847/1538-4357/ab44c8)
- Bordoloi, R., Lilly, S. J., Kacprzak, G. G., & Churchill, C. W. 2014, *ApJ*, 784, 108, doi: [10.1088/0004-637X/784/2/108](https://doi.org/10.1088/0004-637X/784/2/108)
- Borthakur, S., Heckman, T., Strickland, D., Wild, V., & Schiminovich, D. 2013, *ApJ*, 768, 18, doi: [10.1088/0004-637X/768/1/18](https://doi.org/10.1088/0004-637X/768/1/18)
- Bregman, J. N., Anderson, M. E., Miller, M. J., et al. 2018, *ApJ*, 862, 3, doi: [10.3847/1538-4357/aacafe](https://doi.org/10.3847/1538-4357/aacafe)
- Cecil, G., Bland-Hawthorn, J., & Veilleux, S. 2002, *ApJ*, 576, 745, doi: [10.1086/341861](https://doi.org/10.1086/341861)
- Cecil, G., Bland-Hawthorn, J., Veilleux, S., & Filippenko, A. V. 2001, *ApJ*, 555, 338, doi: [10.1086/321481](https://doi.org/10.1086/321481)
- Chevalier, R. A., & Clegg, A. W. 1985, *Nature*, 317, 44, doi: [10.1038/317044a0](https://doi.org/10.1038/317044a0)

- Cooper, J. L., Bicknell, G. V., Sutherland, R. S., & Bland-Hawthorn, J. 2008, *ApJ*, 674, 157, doi: [10.1086/524918](https://doi.org/10.1086/524918)
- Duval, F., Östlin, G., Hayes, M., et al. 2016, *A&A*, 587, A77, doi: [10.1051/0004-6361/201526876](https://doi.org/10.1051/0004-6361/201526876)
- Fabbiano, G., Kim, D. W., & Trinchieri, G. 1992, *ApJS*, 80, 531, doi: [10.1086/191675](https://doi.org/10.1086/191675)
- Faerman, Y., Sternberg, A., & McKee, C. F. 2017, *ApJ*, 835, 52, doi: [10.3847/1538-4357/835/1/52](https://doi.org/10.3847/1538-4357/835/1/52)
- Faucher-Giguère, C.-A., & Quataert, E. 2012, *MNRAS*, 425, 605, doi: [10.1111/j.1365-2966.2012.21512.x](https://doi.org/10.1111/j.1365-2966.2012.21512.x)
- Ferland, G. J., Chatzikos, M., Guzmán, F., et al. 2017, *RMxAA*, 53, 385. <https://arxiv.org/abs/1705.10877>
- Finley, H., Bouché, N., Contini, T., et al. 2017, *A&A*, 605, A118, doi: [10.1051/0004-6361/201730428](https://doi.org/10.1051/0004-6361/201730428)
- Gnat, O., & Sternberg, A. 2007, *ApJS*, 168, 213, doi: [10.1086/509786](https://doi.org/10.1086/509786)
- Gupta, A., Mathur, S., Krongold, Y., Nicastro, F., & Galeazzi, M. 2012, *ApJL*, 756, L8, doi: [10.1088/2041-8205/756/1/L8](https://doi.org/10.1088/2041-8205/756/1/L8)
- Heckman, T., Borthakur, S., Wild, V., Schiminovich, D., & Bordoloi, R. 2017, *ApJ*, 846, 151, doi: [10.3847/1538-4357/aa80dc](https://doi.org/10.3847/1538-4357/aa80dc)
- Heckman, T. M., Armus, L., & Miley, G. K. 1990, *ApJS*, 74, 833, doi: [10.1086/191522](https://doi.org/10.1086/191522)
- Heckman, T. M., & Thompson, T. A. 2017, *Galactic Winds and the Role Played by Massive Stars*, ed. A. W. Alsabti & P. Murdin, 2431, doi: [10.1007/978-3-319-21846-5_23](https://doi.org/10.1007/978-3-319-21846-5_23)
- Hodges-Kluck, E., Cafmeyer, J., & Bregman, J. N. 2016, *ApJ*, 833, 58, doi: [10.3847/1538-4357/833/1/58](https://doi.org/10.3847/1538-4357/833/1/58)
- Irwin, J. A., & Saikia, D. J. 2003, *MNRAS*, 346, 977, doi: [10.1111/j.1365-2966.2003.07146.x](https://doi.org/10.1111/j.1365-2966.2003.07146.x)
- Irwin, J. A., Seaquist, E. R., Taylor, A. R., & Duric, N. 1987, *ApJL*, 313, L91, doi: [10.1086/184837](https://doi.org/10.1086/184837)
- Iyomoto, N., Fukazawa, Y., Nakai, N., & Ishihara, Y. 2001, *ApJL*, 561, L69, doi: [10.1086/324056](https://doi.org/10.1086/324056)
- Jaskot, A. E., & Ravindranath, S. 2016, *ApJ*, 833, 136, doi: [10.3847/1538-4357/833/2/136](https://doi.org/10.3847/1538-4357/833/2/136)
- Kacprzak, G. G., Churchill, C. W., & Nielsen, N. M. 2012, *ApJL*, 760, L7, doi: [10.1088/2041-8205/760/1/L7](https://doi.org/10.1088/2041-8205/760/1/L7)
- Konami, S., Matsushita, K., Gandhi, P., & Tamagawa, T. 2012, *PASJ*, 64, 117, doi: [10.1093/pasj/64.5.117](https://doi.org/10.1093/pasj/64.5.117)
- Kreimeyer, K., & Veilleux, S. 2013, *ApJL*, 772, L11, doi: [10.1088/2041-8205/772/1/L11](https://doi.org/10.1088/2041-8205/772/1/L11)
- La Caria, M. M., Vignali, C., Lanzuisi, G., Gruppioni, C., & Pozzi, F. 2019, *MNRAS*, 487, 1662, doi: [10.1093/mnras/stz1381](https://doi.org/10.1093/mnras/stz1381)
- Leitherer, C., Schaerer, D., Goldader, J. D., et al. 1999, *ApJS*, 123, 3, doi: [10.1086/313233](https://doi.org/10.1086/313233)
- Li, J.-T., Hodges-Kluck, E., Stein, Y., et al. 2019, *ApJ*, 873, 27, doi: [10.3847/1538-4357/ab010a](https://doi.org/10.3847/1538-4357/ab010a)
- Li, J.-T., & Wang, Q. D. 2013, *MNRAS*, 435, 3071, doi: [10.1093/mnras/stt1501](https://doi.org/10.1093/mnras/stt1501)
- Miller, M. J., & Bregman, J. N. 2015, *ApJ*, 800, 14, doi: [10.1088/0004-637X/800/1/14](https://doi.org/10.1088/0004-637X/800/1/14)
- Miville-Deschênes, M.-A., & Lagache, G. 2005, *ApJS*, 157, 302, doi: [10.1086/427938](https://doi.org/10.1086/427938)
- Nicastro, F., Senatore, F., Krongold, Y., Mathur, S., & Elvis, M. 2016, *ApJL*, 828, L12, doi: [10.3847/2041-8205/828/1/L12](https://doi.org/10.3847/2041-8205/828/1/L12)
- Nomoto, K., Tominaga, N., Umeda, H., Kobayashi, C., & Maeda, K. 2006, *NuPhA*, 777, 424, doi: [10.1016/j.nuclphysa.2006.05.008](https://doi.org/10.1016/j.nuclphysa.2006.05.008)
- Piffl, T., Scannapieco, C., Binney, J., et al. 2014, *A&A*, 562, A91, doi: [10.1051/0004-6361/201322531](https://doi.org/10.1051/0004-6361/201322531)
- Robitaille, T. P., Rossa, J., Bomans, D. J., & van der Marel, R. P. 2007, *A&A*, 464, 541, doi: [10.1051/0004-6361:20065454](https://doi.org/10.1051/0004-6361:20065454)
- Rupke, D. 2018, *Galaxies*, 6, 138, doi: [10.3390/galaxies6040138](https://doi.org/10.3390/galaxies6040138)
- Rupke, D. S. N., Coil, A., Geach, J. E., et al. 2019, *Nature*, 574, 643, doi: [10.1038/s41586-019-1686-1](https://doi.org/10.1038/s41586-019-1686-1)
- Sebastian, B., Kharb, P., O’Dea, C. P., Colbert, E. J. M., & Baum, S. A. 2019, *ApJ*, 883, 189, doi: [10.3847/1538-4357/ab371a](https://doi.org/10.3847/1538-4357/ab371a)
- Shafi, N., Oosterloo, T. A., Morganti, R., Colafrancesco, S., & Booth, R. 2015, *MNRAS*, 454, 1404, doi: [10.1093/mnras/stv2034](https://doi.org/10.1093/mnras/stv2034)
- Snowden, S. L., Collier, M. R., & Kuntz, K. D. 2004, *ApJ*, 610, 1182, doi: [10.1086/421841](https://doi.org/10.1086/421841)
- Sofue, Y., Koda, J., Kohno, K., et al. 2001, *ApJL*, 547, L115, doi: [10.1086/318907](https://doi.org/10.1086/318907)
- Springob, C. M., Masters, K. L., Haynes, M. P., Giovanelli, R., & Marinoni, C. 2009, *ApJS*, 182, 474, doi: [10.1088/0067-0049/182/1/474](https://doi.org/10.1088/0067-0049/182/1/474)
- Stone, J. M., Gardiner, T. A., Teuben, P., Hawley, J. F., & Simon, J. B. 2008, *ApJS*, 178, 137, doi: [10.1086/588755](https://doi.org/10.1086/588755)
- Strickland, D. K., Heckman, T. M., Colbert, E. J. M., Hoopes, C. G., & Weaver, K. A. 2004, *ApJS*, 151, 193, doi: [10.1086/382214](https://doi.org/10.1086/382214)
- Strickland, D. K., & Stevens, I. R. 2000, *MNRAS*, 314, 511, doi: [10.1046/j.1365-8711.2000.03391.x](https://doi.org/10.1046/j.1365-8711.2000.03391.x)
- Tanner, R., Cecil, G., & Heitsch, F. 2016, *ApJ*, 821, 7, doi: [10.3847/0004-637X/821/1/7](https://doi.org/10.3847/0004-637X/821/1/7)
- Thompson, T. A., Quataert, E., Zhang, D., & Weinberg, D. H. 2016, *MNRAS*, 455, 1830, doi: [10.1093/mnras/stv2428](https://doi.org/10.1093/mnras/stv2428)
- Tomisaka, K., & Bregman, J. N. 1993, *PASJ*, 45, 513. <https://arxiv.org/abs/astro-ph/9209002>
- Vasudevan, R. V., & Fabian, A. C. 2007, *MNRAS*, 381, 1235, doi: [10.1111/j.1365-2966.2007.12328.x](https://doi.org/10.1111/j.1365-2966.2007.12328.x)
- Veilleux, S., Cecil, G., & Bland-Hawthorn, J. 2005, *ARA&A*, 43, 769, doi: [10.1146/annurev.astro.43.072103.150610](https://doi.org/10.1146/annurev.astro.43.072103.150610)
- Yamagishi, M., Kaneda, H., Ishihara, D., et al. 2010, *PASJ*, 62, 1085, doi: [10.1093/pasj/62.4.1085](https://doi.org/10.1093/pasj/62.4.1085)
- Yoshida, M., Yagi, M., Ohyama, Y., et al. 2016, *ApJ*, 820, 48, doi: [10.3847/0004-637X/820/1/48](https://doi.org/10.3847/0004-637X/820/1/48)
- Zhang, D. 2018, *Galaxies*, 6, 114, doi: [10.3390/galaxies6040114](https://doi.org/10.3390/galaxies6040114)