

Ecosphere

Assessing Precipitation, Evapotranspiration, and NDVI as Controls of U.S. Great Plains Plant Production

Maosi Chen, William J. Parton, Melannie D. Hartman, Stephen J. Del Grosso, William K. Smith, Alan K. Knapp, Susan Lutz, Justin D. Derner, Compton J. Tucker, Dennis S. Ojima, Jerry D. Volesky, Mitchell B. Stephenson, Walter H. Schacht, Wei Gao

Appendix S4. Additional regional distributions of water variables and their correlations in the U.S. GP

Mean 1982-2015 April-July Actual Evapotranspiration (cm)

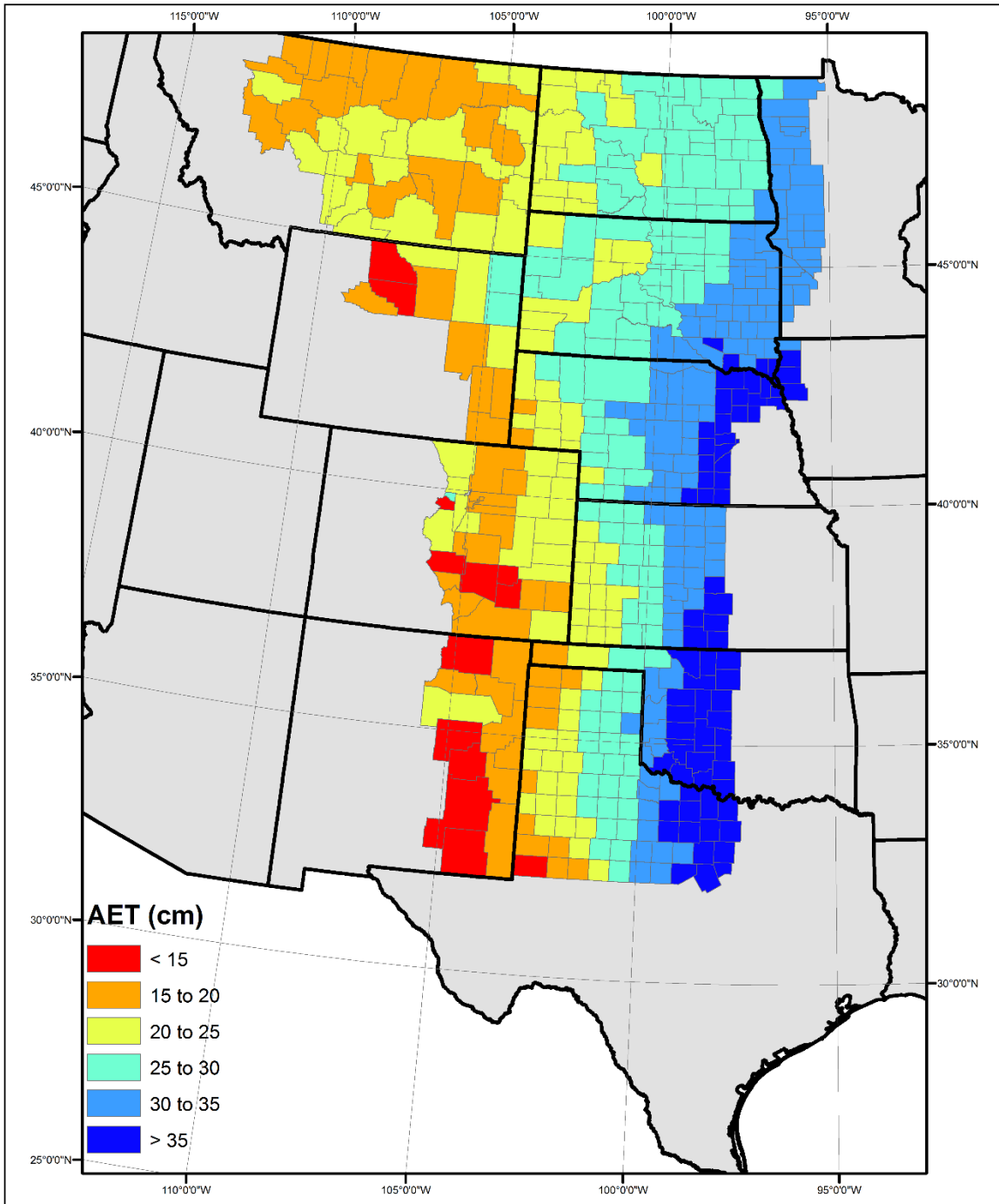


Figure S1. Spatial pattern of mean April-to-July AET in the GP

Mean 1982-2015 April-July Potential Evapotranspiration (cm)

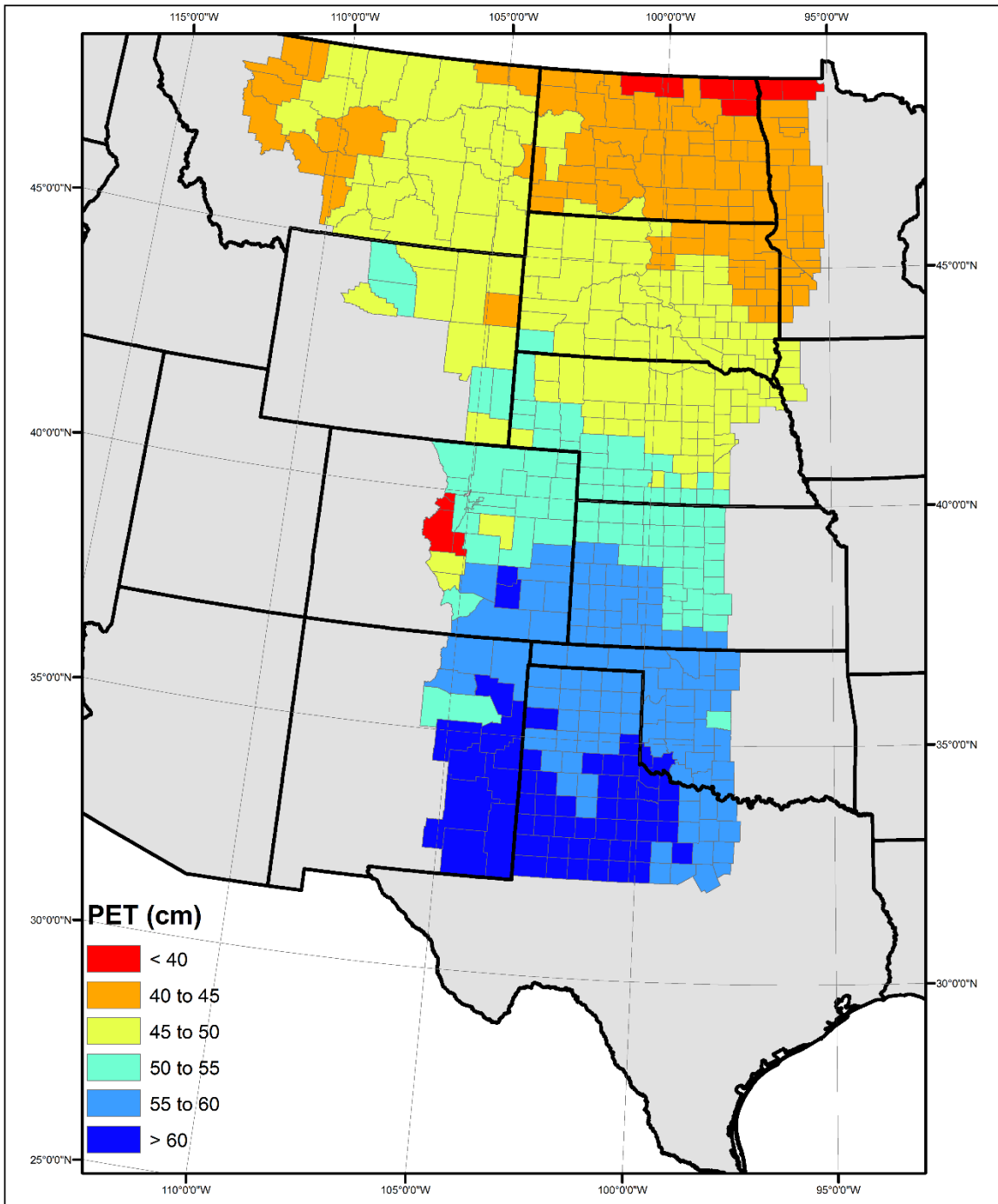


Figure S2. Spatial pattern of mean April-to-July Potential Evapotranspiration in the GP

R² AETamjj vs.PPTamjj 1982-2015

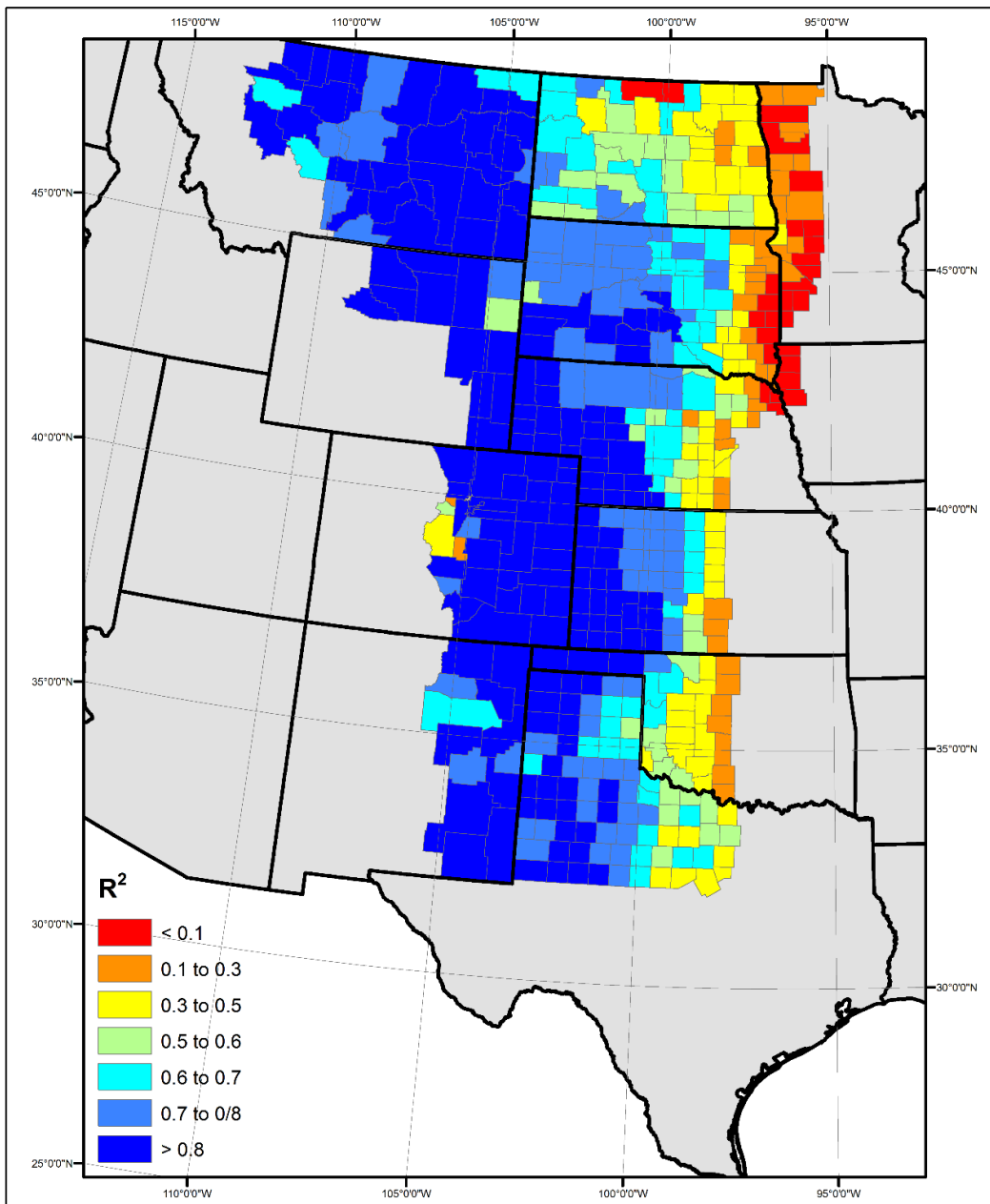


Figure S3. Spatial pattern of correlation (linear regression R²) between cumulative April-to-July AET and precipitation in the U.S. GP (1982-2015).

AETamjj stdev/mean 1982-2015

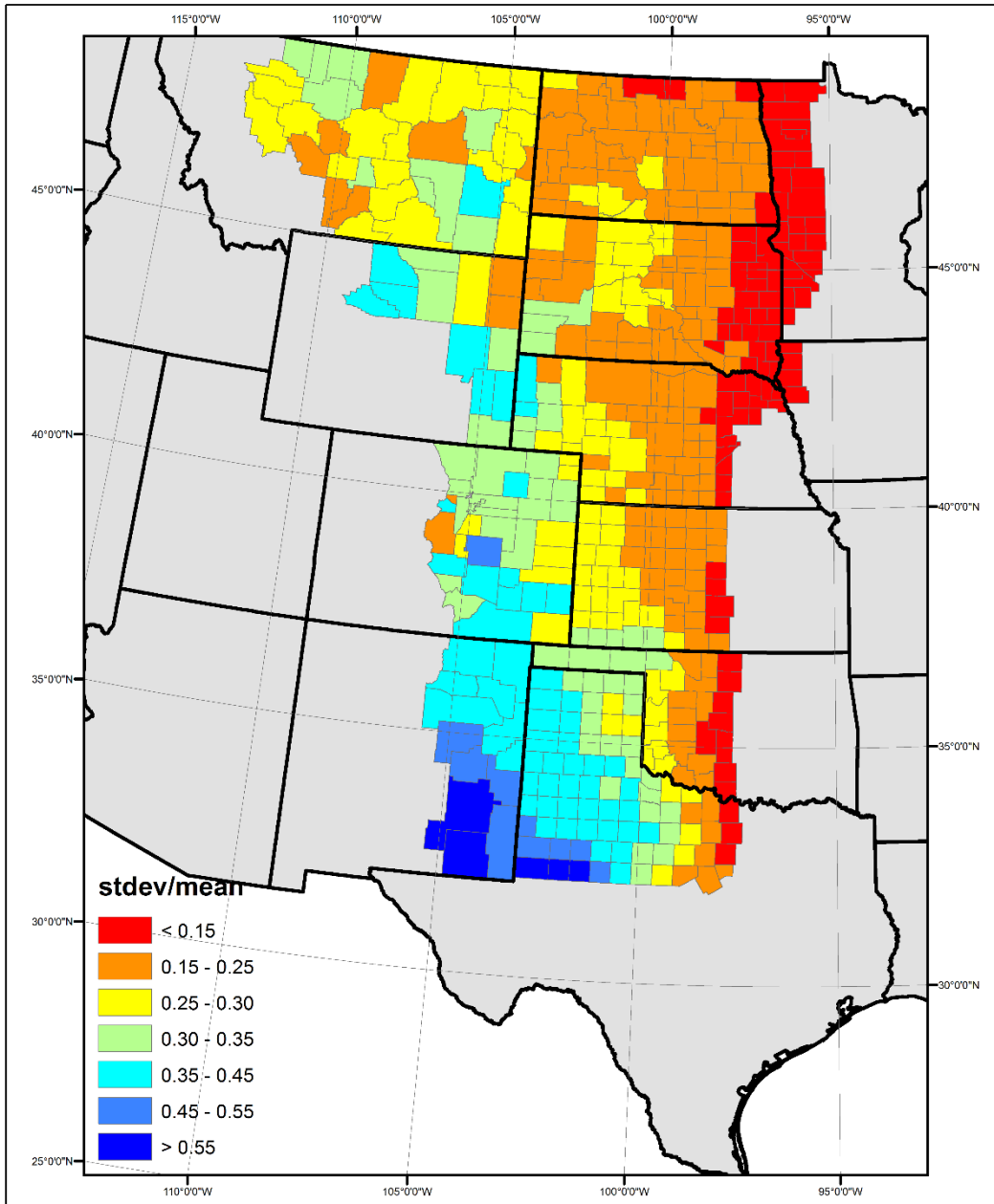


Figure S4. Spatial pattern of coefficient of variation (CV, standard deviation divided by mean) for the annual cumulative April-to-July AET in the U.S. GP (1982-2015).

PPTamjj stdev/mean 1982-2015

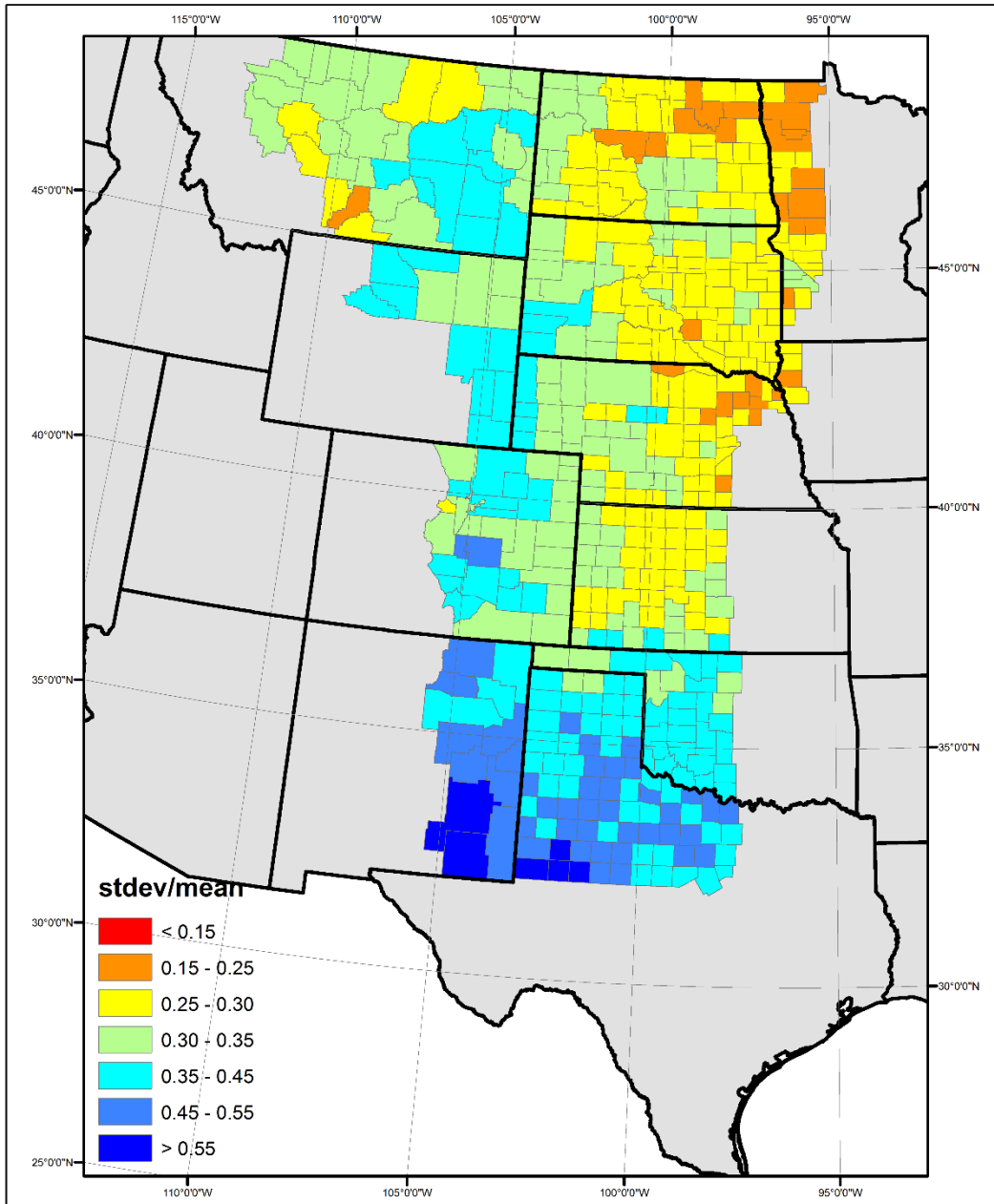


Figure S5. Spatial pattern of coefficient of variation (CV, standard deviation divided by mean) for the annual cumulative April-to-July precipitation in the U.S. GP (1982-2015).