

# Validation of Soil Moisture Data Products from the NASA SMAP Mission

A. Colliander, R.H. Reichle, W.T. Crow, M.H. Cosh, F. Chen, S. Chan, N. Das, R. Bindlish, J. Chaubell, S.B. Kim, Q. Liu, P. O'Neill, R.S. Dunbar, L. Dang, J. Kimball, T.J. Jackson, H.K. al Jassar, J. Asanuma, B. K. Bhattacharya, A. Berg, D.D. Bosch, L. Bourgeau-Chavez, T. Caldwell, J-C. Calvet, C. Holifield Collins, K.H. Jensen, S. Livingston, E. Lopez-Baeza, J. Martínez-Fernández, H. McNairn, M. Moghaddam, C. Montzka, C. Notarnicola, T. Pellarin, I. Greimeister-Pfeil, J. Pulliainen, J. Ramos, M. Seyfried, P. Starks, Z. Su, R. van der Velde, Y. Zeng, M. Thibeault, M. Vreugdenhil, J.P. Walker, M. Zribi, D. Entekhabi, S. Yueh

**Abstract** – The National Aeronautics and Space Administration (NASA) Soil Moisture Active Passive (SMAP) mission has been validating its soil moisture (SM) products since the start of data production on March 31, 2015. Prior to launch, the mission defined a set of criteria for core validation sites (CVS) that enable the testing of the key mission SM accuracy requirement (unbiased root-mean-square error  $<0.04 \text{ m}^3/\text{m}^3$ ). The validation approach also includes other (“sparse network”) *in situ* SM measurements, satellite SM products, model-based SM products, and field experiments. Over the past six years, the SMAP SM products have been analyzed with respect to these reference data, and the analysis approaches themselves have been scrutinized in an effort to best understand the products’ performance. Validation of the

most recent SMAP Level 2 and 3 SM retrieval products (R17000) shows that the L-band (1.4 GHz) radiometer-based SM record continues to meet mission requirements. The products are generally consistent with SM retrievals from the European Space Agency (ESA) Soil Moisture Ocean Salinity mission, although there are differences in some regions. The high-resolution (3-km) SM retrieval product, generated by combining Copernicus Sentinel-1 data with SMAP observations, performs within expectations. Currently, however, there is limited availability of 3-km CVS data to support extensive validation at this spatial scale. The most recent (version 5) SMAP Level 4 SM data assimilation product providing surface and root-zone SM with complete spatio-temporal coverage at 9-km resolution also meets performance requirements. The SMAP SM validation program will continue

---

A.C., S.C., J.C., S.B.K., R.S.D., L.D., S.Y. are with Jet Propulsion Laboratory, California Institute of Technology, Pasadena, CA, USA (e-mail: andreas.colliander@jpl.nasa.gov; steven.k.chan@jpl.nasa.gov; mario.j.chaubell@jpl.nasa.gov; seungbum.kim@jpl.nasa.gov; roy.s.dunbar@jpl.nasa.gov; lan.dang@jpl.nasa.gov; simon.h.yueh@jpl.nasa.gov).

R.H.R., R.B. Q.L., and P.O. are with NASA Goddard Space Flight Center, Greenbelt, MD, USA (e-mail: rolf.reichle@nasa.gov; rajat.bindlish@nasa.gov; peggy.e.oneill@nasa.gov).

W.T.C. and M.H.C. are with USDA-ARS, Hydrology and Remote Sensing Laboratory, Beltsville, MD, USA (e-mail: wade.crow@usda.gov; michael.cosh@usda.gov).

F.C. is with USDA-ARS, Hydrology and Remote Sensing Laboratory, Beltsville, MD, USA and SSAI, Inc., Lanham, Maryland (e-mail: fan.chen@usda.gov).

N.D. is with Michigan State University, Department of Civil and Agricultural Engineering, East Lansing, MI, USA (e-mail: dasnaren@msu.edu).

J.K. is with Numerical Terradynamic Simulation Group, University of Montana, Missoula, MT, USA (e-mail: john.kimball@mso.umt.edu).

T.J.J. is retired from USDA-ARS, Hydrology and Remote Sensing Laboratory, Beltsville, MD, USA (e-mail: tj080204@yahoo.com).

H.K.J. is with Kuwait University, Physics Department, Kuwait, Kuwait (e-mail: hkjassar.rs@gmail.com).

J.A. is with University of Tsukuba, Center for Research in Isotopes and Environmental Dynamics (CRIED), Tsukuba, Japan (e-mail: asanuma@ied.tsukuba.ac.jp).

B.K.B. is with Space Applications Centre, ISRO, Ahmedabad, Gujarat, India (e-mail: bkbhattacharya@sac.isro.gov.in).

A.B. is with University of Guelph, Department of Geography, Environment and Geomatics, Guelph, ON, Canada (e-mail: aberg@uoguelph.ca).

D.D.B. is with USDA-ARS Southeast Watershed Research, Tifton, GA, USA (e-mail: david.bosch@usda.gov).

L.B.-C. is with Michigan Technical Research Institute, Ann Arbor, MI, USA (e-mail: lchavez@mtu.edu).

T.C. is with US Geological Survey, Nevada Water Science Center, Carson City, NV, USA (e-mail: tcaldwell@usgs.gov).

J.-C.C. is with CNRM, Université de Toulouse, Météo-France, CNRS, Toulouse, France (e-mail: jean-christophe.calvet@meteo.fr).

C.H.C. is with USDA-ARS Northwest Watershed Research Center, Tucson, AZ, USA (e-mail: chandra.holifield@usda.gov).

K.H.J. is with University of Copenhagen, Copenhagen, Denmark (e-mail: khj@ign.ku.dk).

S.L. is with USDA-ARS National Soil Erosion Research Lab, West Lafayette, IN, USA (e-mail: stan.livingston@usda.gov).

E. L-B. is with University of Valencia, Valencia, Spain (e-mail: ernesto.lopez@uv.es).

J.M-F. is with Universidad de Salamanca, Instituto Hispano Luso de Investigaciones Agrarias (CIALE), Spain (e-mail: jmf@usal.es).

H.M. is with Agriculture and Agri-Food Canada (AAFC), Ottawa, ON, Canada (e-mail: heather.mcnaime@agr.gc.ca).

M.M. is with University of Southern California, Los Angeles, CA, USA (e-mail: mahta@usc.edu).

C.M. is with Research Center Juelich, Institute of Bio- and Geosciences: Agrosphere (IBG-3), Juelich, Germany (e-mail: c.montzka@fz-juelich.de).

C.N. is with EURAC-Institute for Earth Observation, Bolzano, Italy (e-mail: claudia.notarnicola@eurac.edu).

T.P. is with University of Grenoble Alpes, CNRS, IRD, Grenoble INP, IGE, 38000 Grenoble, France (e-mail: thierry.pellarin@univ-grenoble-alpes.fr).

I.G-P. and M.V. are with Vienna University of Technology, Vienna, Austria (e-mail: isabella.pfeil@geo.tuwien.ac.at; Mariette.Vreugdenhil@geo.tuwien.ac.at).

J.P. is with Finnish Meteorological Institute, Helsinki, Finland (e-mail: jouni.pulliainen@fmi.fi).

J.R. is with Universidad Nacional Autónoma de México, Mexico City, Mexico (e-mail: jramosh@ingen.unam.mx).

M.S. is with USDA-ARS Northwest Watershed Research Center, Boise, ID, USA (e-mail: mark.seyfried@usda.gov).

P.S. is with USDA-ARS Grazinglands Research Laboratory, El Reno, OK, USA (e-mail: patrick.starks@usda.gov).

Z.S., R.V. and Y.Z. are with University of Twente, Enschede, the Netherlands (e-mail: z.su@utwente.nl; r.vandervelde@utwente.nl; y.zeng@utwente.nl).

M.T. is with Comisión Nacional de Actividades Espaciales (CONAE), Buenos Aires, Argentina (e-mail: mthibeault@conae.gov.ar).

J.P.W. is with Monash University, Clayton, Victoria, Australia (e-mail: jeff.walker@monash.edu).

M.Z. is with CESBIO, Université de Toulouse, CNRS/UPS/IRD/CNES/INRAE, Toulouse, France (e-mail: mehrez.zribi@ird.fr).

D.E. is with Massachusetts Institute of Technology, Cambridge, MA, USA (e-mail: darae@mit.edu).

throughout the mission life; future plans include expanding it to forested and high-latitude regions.

*Index Terms*—SMAP, Soil Moisture, Validation, Core Validation Sites

## I. INTRODUCTION

The National Aeronautics and Space Administration (NASA) Soil Moisture Active Passive (SMAP) mission has produced global soil moisture (SM) measurements since March 2015 [1]. SMAP uses the L-band (1.413 GHz) frequency to carry out the SM measurements because of its sensitivity to SM changes in the surface (~0-5 cm) soil layer and its relative insensitivity to confounding effects of surface roughness and vegetation [2]. As with other remotely sensed data products, the scientific value of these SM products is determined, in part, by how well their performance characteristics are known. The process of assessing the accuracy of a data product by independent means is called validation ([3],[4]). The SMAP mission established a rigorous validation program to verify that mission requirements are met and to provide information on the quality of the products to the community. The mission recognized the importance of the calibration and validation program early on, resulting a comprehensive plan of validation activities during the pre-launch phase ([5]). In particular, the mission started engaging external partners and conducting validation exercises years before the launch. Moreover, the SMAP validation strategy benefited from two earlier missions that had a considerable focus on the validation of SM products: the (Japan Aerospace Exploration Agency) JAXA AMSR-E (Advanced Microwave Scanning Radiometer-Earth Observing System) instrument launched by NASA on the Aqua satellite in 2002 ([6]), and the SMOS (Soil Moisture and Ocean Salinity) satellite launched by ESA (European Space Agency) in 2009 ([7]). AMSR-E validation efforts spurred the development of locally dense observation networks with surface SM measurements in hydrologic research watersheds for SM validation at the footprint scale of these satellites (tens of kilometers) (e.g., [8],[9],[10],[11],[12],[13],[14]). This trend continued with SMOS (e.g., [15],[16],[17],[18],[19]). Consequently, when SMAP was launched in 2015, there was already a significant infrastructure of locally dense networks in place with respect to the remote sensing footprint size, due to these earlier efforts and active international cooperation.

The SMAP project evaluated these existing locally dense networks for their suitability as so-called SMAP core validation sites (CVS) and called for expanding these kinds of observations as much as possible, while also incorporating sparse networks (typically providing just one point-scale observation location within a footprint), other satellite data products, model-based products, and field experiments into the SM validation plan ([5]). The AMSR-E and SMOS validation efforts utilized these components as well. In the US, the AMSR-E community led a series of field experiments that also included airborne observations (e.g., [20],[21],[22]). The experience gained from these experiments was invaluable for the subsequent SMAP validation experiments (Section III.F). SMOS SM validation plans [23] similarly included field experiments (e.g., [24]), sparse networks (e.g., [25]), and other

approaches (e.g., [26]) in addition to dense networks (e.g., [27],[28],[18],[29]). In the 1990s, an effort was started to collect global SM measurements in a single database called the Global Soil Moisture Data Bank [30]. ESA and SMOS continued the development of a centralized repository via the ongoing collection of *in situ* SM observations into the International Soil Moisture Network (ISMN; [31]).

The SMAP project required the release of beta and validated versions of the SM data products after 6 and 12 months, respectively, from the start of science observations [5]. This timeline drove many decisions in the development of the validation plan and tools. Obviously, only reference data for the period after the start of the SMAP science observations on March 31, 2015 could be used for SMAP validation. Moreover, reference measurements needed to be available to SMAP with short temporal latency to facilitate validation of the beta and validated product versions in time for their public release. The mission's emphasis on this point ensured that there were data available during the first months of the validation period to meet the challenging timeline. This is also the main reason the SMAP validation team connected directly to the data providers and operated outside of established repositories, such as the ISMN, that do not have such strict latency requirements. Furthermore, the bulk of the data processing tools were developed and the data formats, transfer protocols etc. were agreed upon before the launch of SMAP. This arguably reduced the flexibility to include data sets that did not meet the constraints during the first year of the validation. However, once the most intensive phase of the validation was completed, the mission was able to increase flexibility and relax its previous requirements on the latency of the validation data.

A unique aspect of the SMAP SM validation is the need to assess SM estimates for the nested “surface” (0-5 cm) and “root-zone” (0-100 cm) soil layers from the SMAP Level 4 (L4) product, which is based on the assimilation of SMAP brightness temperature (TB) observations into a land surface model [39]. To the extent possible, the SM validation strategy for the L4 product is similar to that of the directly retrieved Level 2 (L2) and Level 3 (L3) surface-only SM products (Section II), which were based on CVS, sparse networks, and other data sources. However, adaptation to the unique characteristics of the L4 product resulted in some differences between the validation of the L4 and L2/L3 products (Sections III and IV).

The Committee on Earth Observation Satellites (CEOS) has advanced a four-stage validation hierarchy, which has been adopted by many providers of satellite data product (<https://lpvs.gsfc.nasa.gov>). The validation stages increase with the breadth of the validation effort (Appendix A). SMAP was operating at validation Stage 1 during the first year of the mission, which implied that the assessment was conducted based on comparisons to *in situ* reference data collected at a small set of locations and over relatively short time periods. The SM products achieved Stage 2 shortly thereafter with the extension of the spatial and temporal scope and the publication of the first validation results in the peer-reviewed literature. Since then, SMAP has continued to expand the analysis, with significant contributions from the community, to achieve Stage 3 maturity. Stage 4 (the final stage) requires the Stage 3 level analysis to be updated systematically over time. Many of the SMAP validation analyses are currently updated on a yearly

basis and released in the data product assessment reports (e.g., [32],[33]), which satisfies the key aspect of Stage-4 validation.

The experience of the AMSR-E, SMOS, and SMAP SM validation efforts contributed to two important community reference documents that outline best practices for SM validation along with guidance for future development of these practices [34],[35]. The SMAP SM validation approach is largely in line with these recommendations. This paper lays out the SMAP SM validation approach, describes the use of the different methodologies, discusses the uncertainty estimates associated with the validation analyses (Section III), and presents updated validation results for the most recent versions (R17000 for L2/L3 and Vv5030 for L4) of the SMAP SM products (Section IV). In Section V, we discuss the reliability of the validation approach, its shortcomings, and how to improve on the current approach as well as results from other validation studies and future directions for the SMAP soil moisture products and their validation.

## II. SMAP SOIL MOISTURE DATA PRODUCTS

Since March 31, 2015, the SMAP mission has delivered data products containing instrument measurements (Level 1), geophysical SM retrievals (swath-based, L2, and daily composite, L3), and SM estimates from data assimilation of the instrument measurements into a land surface model (L4). On 7 July 2015, the SMAP radar malfunctioned and ceased operation. Prior to the radar malfunction, SMAP provided four different surface SM products and one root-zone SM product [1]: radiometer-based surface SM on a 36-km grid [36], radar-based surface SM on a 3-km grid [37], radiometer and radar combined surface SM on a 9-km grid [38], and surface and root-zone SM based on the assimilation of SMAP TB observations into the NASA Goddard Earth Observing System (GEOS) Catchment land surface model on a 9-km grid [39]. The grid used by the SMAP products is the version 2 Equal Area Scalable Earth (EASEv2) grid system [40],[41].

Following the failure of the radar, the mission introduced a new TB sampling approach and two new SM products. The SMAP 40° angle TB measurements have a 38-km resolution (defined by the half-power footprint on the Earth’s surface of the radiometer antenna pattern); the radiometric resolution of the gridded TB is better than 0.5 K, and the measurements filter out radio frequency interference (RFI, [42],[43],[44]). The original radiometer sampling averaged the TB measurements over the 36-km EASEv2 grid cells using inverse distance weighting ([45]). The enhanced TB processing developed after the radar malfunction, using a Backus-Gilbert approach to

sample measurements on the 9-km EASEv2 grid [46]. A new SM product was developed based on the enhanced TB product, which was also sampled onto the 9-km grid [47]. Because the spatial resolution of the TB measurement is considerably larger than the 9-km spacing of the sampling grid, the enhanced passive radiometer-based SM product (henceforth, PE) inverts the TB from a given 9-km grid cell into a SM estimate using ancillary data and parameters for a 33-km “aggregation domain” centered on the 9-km grid cell, thereby approximating the spatial resolution of the TB measurement. The second SM product introduced after the radar malfunction uses observations from the C-band radar on the Copernicus Sentinel-1a and 1b satellites to downscale the SMAP L-band radiometer TB measurements with an algorithm similar to that used by the original SMAP radar/radiometer combined product [38], and then derives SM from the downsampled TB field [48]. The SMAP/Sentinel-1 product (henceforth, SP) provides SM on 1-km and 3-km grids. The product uses the SMAP observations only when the Sentinel-1 measurements are available; therefore, the product covers the Earth in about 12-days (based on Sentinel-1 repeat cycle), but the combined revisit interval of the two satellites is less for certain areas where data collection is prioritized (over Europe, for example) [48]. Table I summarizes the SMAP SM products.

The radiometer-based products (P and PE) include SM retrieved using three different algorithms: single channel vertical polarization (SCA-V), single channel horizontal polarization (SCA-H) and dual channel algorithms (DCA) [49]. Besides adding the enhanced and the SMAP/Sentinel-1 products described above, the mission has broadly improved all products over the years. Key improvements include the processing of ancillary data, such as the surface temperature [49], updating the SM retrieval algorithm for the DCA [50], and improving the modeling parameterization for the L4 product [51]. New versions of the SMAP SM products have been released approximately yearly with various enhancements and always accompanied by updated assessment reports (e.g., [32] [33]), plus a complete reprocessing of the data.

The SMAP baseline validation domain is defined by the product accuracy requirements of the mission. Surfaces with permanent ice and snow, urban areas, wetlands, and areas with above-ground vegetation water content greater than 5 kg/m<sup>2</sup> are excluded from the formal accuracy requirements and identified with a non-zero Retrieval Quality Flag (RQF) [1]. In recent years, the SMAP SM algorithm research has included improving the quality of SM retrievals in more densely

TABLE I. SMAP SOIL MOISTURE DATA PRODUCTS. THE RESOLUTION COLUMN INDICATES THE EFFECTIVE SPATIAL RESOLUTION AND THE EASEV2 GRID COLUMN INDICATES THE SPACING OF THE POSTING GRID.

Data Product Name	Abbr.	Short Description	Resolution	EASEv2 Grid	Time Period
[L2/L3]SMPE	PE	Enhanced radiometer-based	33 km	9 km	March 31, 2015 – present
[L2/L3]SMP	P	Radiometer-based	36 km	36 km	March 31, 2015 – present
[L2/L3]SMA	A	Radar-based	3 km	3 km	April 13 – July 7, 2015
[L2/L3]SMAP	AP	Combined SMAP radiometer and radar	9 km	9 km	April 13 – July 7, 2015
L2SMSP	SP	Combined SMAP radiometer and Sentinel-1 radar	3 km	3 km	March 31, 2015 – present
L4SM	L4	Model assimilation product (surface and root-zone SM)	9 km	9 km	March 31, 2015 – present

vegetated regions, which has resulted in validation activities in forested areas [52][53].

### III. SMAP SOIL MOISTURE VALIDATION STRATEGY AND METHODOLOGIES

The SMAP SM validation strategy is driven by the mission validation requirements, the characteristics of the measured SM (accounting for natural variability in the horizontal, vertical and time dimensions), and the availability of high-quality reference data [5]. NASA required the SMAP mission to measure SM to within 0.04 m<sup>3</sup>/m<sup>3</sup> accuracy - in an average aggregate sense - across the entire SM validation domain [1],[54], where accuracy is defined as the standard deviation of the error or unbiased root-mean-square error (ubRMSE, see Appendix B). Because the locally dense CVS SM monitoring networks provide the best available measurements of SM at the SMAP radiometer footprint scale (Section III.B), the mission chose the CVS data as the primary validation reference to establish that the accuracy requirement is met. Specifically, the product accuracy assessment is based on the average of the unbiased root-mean-square difference (ubRMSD) sampled at the CVS [56]. Other metrics used in the validation are the RMSD and the mean difference (MD) (see Appendix B). Owing to errors in the *in situ* measurements, the ubRMSD, RMSD and MD are conservative estimates of the true SMAP ubRMSE, RMSE and bias, respectively (section III.A). The validation metrics further include the Pearson correlation (R; Appendix B) and the anomaly R computed using the departures from the multi-year, seasonally varying climatology computed for both the reference and SMAP SM [51]. Because the number of available SM CVS across the globe is limited, the validation strategy was complemented with additional data sources. These sources include geographically more extensive SM networks with only one, or very few, measurements within the footprint (i.e., sparse networks; Section III.C), other global satellite-based SM products (Section III.D), global land model-based estimates of SM (Section III.E), and field experiments (Section III.F). Additionally, the validation of the L4 product included data assimilation diagnostics as an important element, reflecting the unique nature of L4 among the products (Section III.G). Each methodology has key features that are exploited in the

continuing validation process to accomplish the most comprehensive validation possible for each product across time and space.

The application of the methodologies and analysis approaches depends on the SMAP products. For example, there are few other high-resolution (<30 km) SM products, especially at the global scale, that can be compared with the SMAP active (A), active-passive (AP) and SP products. Triple collocation (TC) analysis has been used to support the use of the sparse networks and other satellite data products together with land model-based products for complementary assessments of the P and PE products [57],[58]. However, since the L4 product is based on merging radiometer observations into a land model, traditional TC analysis cannot be used for the L4 SM because there are not enough independent reference datasets. However, other Instrumental Variable approaches can be used to quantify the skill improvement from the assimilation of SMAP observations in L4 (relative to a model-only baseline; [59]). Table II summarizes the different validation methodologies and the analysis approaches applied with them for the different data products.

The SMAP satellite makes measurements in the morning and evening based on its 6 AM / 6 PM equator crossing sun-synchronous orbit configuration (Section II). The accuracy requirement for L2SM products applies to the SM retrieved using the 6 AM (descending) SMAP overpasses because of the expected uniformity of the temperature across the soil-vegetation column [49], but the SM retrieved using the 6 PM overpasses is also validated (and actually has roughly equivalent accuracy performance to the AM overpasses). L4 SM is available and validated at 3-hourly intervals.

Currently, the data record of *in situ* comparisons with SMAP is over 6 years long. This allows a very detailed look into the performance of the SMAP products, including seasonal characteristics (e.g., [60],[61],[62]). Continuing data collection and validation are nevertheless important. CEOS considers the continuous monitoring of data consistency to be a key aspect of any validation program since it allows for the reliable detection of any potential anomalies. For example, SMAP experienced an operational anomaly from 19 June to 23 July 2019; once SMAP science measurements were available again after 23 July 2019, it was extremely important to have immediate access to

TABLE II. SMAP CAL/VAL METHODOLOGIES FOR L2-L4 SOIL MOISTURE PRODUCTS, RELEVANT ANALYSIS APPROACHES AND ASSOCIATED PRODUCTS.

Methodology	Key Features	Analysis Approaches	Products
Core validation sites	Accurate estimates of products at matching scales for a limited set of conditions	Direct comparisons	P, PE, A, AP, SP, L4
		Retrieval algorithm testing	P, PE, A
Sparse networks	One point in the grid cell for a wide range of conditions	Direct comparisons (bias-insensitive metric only)	P, PE, A, AP, SP, L4
		Triple-collocation	P, PE,
Satellite products	Estimates over a very wide range of conditions at matching scales	Direct comparisons	P, PE
		Triple-collocation	P, PE
		Instrumental Variable	L4
Model products	Estimates over a very wide range of conditions at matching scales	As part of the triple-collocation analysis	P, PE
Field campaigns	Detailed estimates for a very limited set of conditions	Direct comparisons	P, PE
		Retrieval algorithm testing	P, PE
Assimilation diagnostics	Assessment of the proper functioning of the assimilation system	Observation-Forecast (O-F) TB residuals	L4

concurrent validation data to verify that the SM retrieval performance remained unchanged following the operational anomaly.

The metrics computed with respect to *in situ* data are subject to sampling error and should always be provided together with statistical confidence intervals. Reference [34] summarizes the appropriate methodology to compute confidence intervals for each metric. While they provide a quantitative way of evaluating the statistical significance of the differences between different products and algorithm versions, it is important to emphasize that they do not provide the confidence with respect to the actual true value, but the confidence in the calculation of the difference between the two data sets (SMAP and the reference). This approach was adopted also by the SMAP validation team. The equations are summarized in Appendix B.

#### A. Horizontal and Vertical Variability of Soil Moisture

SM measurements are scale-dependent and must be interpreted in terms of their spatial support, spacing, and network extent [63]. The validation of SMAP SM with *in situ* measurements is complicated by the extremely different spatial support of the measurements (point-scale *in situ* sensor measurements vs km-scale resolution of the SMAP products). Depending on the network, the spacing and extent of the *in situ* measurements may approximate the SMAP footprint, as is the case with the CVS. Perhaps most importantly, the spacing of the station measurements (number and distribution) must allow a reliable estimation of the average SM over the SMAP footprint. The required minimum number of point-scale sensors and their spacing is dictated by the spatial variability of SM within the area of interest and the desired accuracy for the estimate at that spatial scale (e.g., [64],[65],[66],[67],[68],[9],[10],[69],[70],[71]). Upscaling of *in situ* measurements to a satellite footprint scale can be accomplished by averaging *in situ* measurements with some weighting scheme and it can also include additional high-resolution information (e.g., [72],[73],[74],[75],[76]). For the SMAP CVS, the geometric Voronoi diagram ([77]; or see Thiessen Polygons in [78]) approach was chosen as the baseline upscaling approach to avoid geographical overweighting of clustered parts of the pixels – for uniformly distributed networks, the weighting of the stations is also uniform and the upscaling corresponds to a simple arithmetic average [54]. Because of an extremely distinct soil texture gradient at the Carman CVS, an upscaling approach based on the soil texture distribution relative to the SM station locations was applied there [79]. Reference [80] presented the upscaling approach applied at the Twente CVS where a smaller number of continuously measuring stations are used to estimate the average SM based on a hydrological model and measurements from additional stations that do not cover the entire time-period.

The scale discrepancy presents a particular challenge for determining errors in large-scale SM products because the long-term mean SM at a randomly selected single point may be very different from that of the area-average SM. That is, point-scale SM measurements are typically biased with respect to area-average SM. Conversely, the time-varying component of SM typically has a large autocorrelation over long distances; that is, point measurements can better represent the SM temporal changes over domains of several km [81],[82]. Many studies of

temporal stability of SM very effectively illustrate these differences of spatial and temporal evolution of SM (e.g., [83],[84],[85],[11],[86],[70]). Generally, the sparse networks lack adequate representation for resolving bias and RMSE at the scale of satellite SM retrieval footprints.

While arguably less severe than the challenges facing the sampling of bias [82], there are also challenges in estimating bias-insensitive metrics (e.g., ubRMSE, R) from sparse ground observations. Most notably, random spatial representativeness errors will spuriously inflate the sampled ubRMSD [87] and degrade the sampled estimates of R [57]. As a result, the recovery of absolute ubRMSE and R metrics acquired from *in situ* measurements, and especially from sparse networks, requires statistical upscaling techniques capable of estimating, and correcting for, the impact of random spatial representative errors (see Section III.C).

In addition to determining performance metrics, calibration/validation (cal/val) activities are often used to quantify the *relative* variation of metrics between, for example, two different retrieval techniques. It is worth noting that a robust bulk characterization of *relative* skill in terms of ubRMSE and R can generally be obtained directly from sparse network data – without the application of upscaling techniques. While point-to-footprint upscaling errors can be large, they can be treated as random in nature and independent of retrieval errors. As a result, random spatial representativeness can be assumed to have an equal impact on ubRMSD and R calculated for multiple products and will not affect the assessment of relative metric differences between two products [88].

A consequential assumption in SMAP validation is that the L2/L3 products provide an estimate of the surface SM in the top 5 cm (on average) and within the grid cell boundaries. This is especially important in considering the breakdown of uncertainties. The response of a microwave radiometer varies depending on the SM content and its vertical distribution (e.g., [89],[90],[91],[92]). Accounting for this effect separately in the data product would introduce another set of uncertainties, but because of the assumption, the uncertainty caused by the variable sensing depth is embedded within the product uncertainty (e.g., [93],[80]). Hence, the validation of the surface SM products is done with respect to *in situ* measurements that correspondingly provide an estimate for the top 5 cm of the soil column with their own set of uncertainties. Most of the *in situ* measurements used for SMAP validation measure the SM at 5 cm depth using a probe that is installed horizontally in the soil which captures the SM over an approximate depth range of 3-7 cm, missing the topmost layer of the soil. Probes that have ~5 cm prongs and are inserted vertically also capture the topmost layer and provide a truer average of water content in the 0-5 cm soil column, particularly during rapid dry-down periods after rain events [94]. Vertical installation, however, makes sensors more vulnerable to surface disturbances, and depending on the sensor, may interfere with the water flow, result in inaccurate soil temperature compensation of the probe calibration, or the assumptions of the SM measurement along the sensor prongs may be inaccurate [95]. The study in [96] found that the practical difference of these measurements is dependent on the soil clay content (increasing dependence on sensor orientation with increasing clay content).

### B. Core Validation Sites

The SMAP mission engaged with investigators across the globe to provide data from dense networks. The networks were assessed before the SMAP launch according to the following criteria:

1. Number of sensors:  $N > 8$  for 36-km,  $N > 5$  for 9-km and  $N > 3$  for 3-km pixels (see [54]).
2. Geographical distribution: The sensors are not clustered in only one portion of the pixel but cover (approximately) the entire pixel (although not necessarily evenly, see the next requirement).
3. Spatial upscaling: An average SM can be established based on the measured SM and ancillary information (such as additional short-term observations), see Section III.A.
4. Calibration: The sensors have undergone a calibration using additional measurements, or the calibration is otherwise verified based on past measurements.
5. Quality assessment: The time-series of each sensor is valid (no dropouts, spikes, drifting, etc.).
6. Maturity: The network has been up and running for a sufficiently long period during which the overall consistency of the measurements was verified.
7. Latency: The data is made available for SMAP validation within 1 week (at most 1 month). This criterion was applied only in the early phase of the mission.

Based on these requirements, currently 15 sites provide reference data at the 33-km scale (or 36 km for the standard P product), 17 sites provide reference data at the 9-km scale, and 8 sites provide reference data at the 3-km scale. At the 9-km and 3-km scales, a few sites include more than one independent reference pixel, for a total of 22 (15) pixels at the 9-km (3-km) scale. Two of the original 36-km sites (Kyeamba and Bell Ville) [54] did not continue to provide data from a sufficient number of stations after the initial validation period and were therefore moved to the candidate site category. One site (HOBE; [97]) was added only after the initial validation period because it had not met the first-year latency requirement. The 9-km L4 product

is validated primarily using 9-km reference pixels that were selected following largely the same principles as for L2 SM validation, resulting in a nearly identical set of 18 CVS with sufficient *in situ* measurements for surface SM validation. Only 7 CVS provide sufficient measurements for root-zone SM validation. Table III lists the CVS and candidate sites and Figure 1 shows their locations.

Most of the 33-km CVS have more than the minimum required number of measurement locations, which would suggest an uncertainty of less than  $0.03 \text{ m}^3/\text{m}^3$  for the average *in situ* SM across the 33-km reference pixel [54]. However, [82] found that the variability of the SM caused the confidence interval (CI) for the MD to be greater than  $0.03 \text{ m}^3/\text{m}^3$  at seven of the 15 analyzed CVS. The study also accounted for the distribution of the stations (spacing) so that clustered installations had less sampling power; using this adjustment, the MD CI exceeded  $0.03 \text{ m}^3/\text{m}^3$  at nine CVS. The study found that these sites would need to add about eight stations on average to meet the CI goal. At four of the CVS, temporary SM sensors were installed that provided an additional 19-34 measurement stations over one season. These temporary measurements are useful as a reference for the permanent network measurements. As expected, SM measurements from the permanent and temporary networks were very well correlated overall, but the absolute SM difference ranged from  $0.009 \text{ m}^3/\text{m}^3$  to  $0.034 \text{ m}^3/\text{m}^3$  [98], which supports the finding by [82] that significant uncertainties in absolute SM remain even with relatively dense spatial sampling.

Even though the candidate validation sites did not satisfy all of the core site requirements, they still offered rich data sets. The 18 candidate sites provided data from six continents and for diverse land cover and climate conditions. The candidate sites could be applied to investigate SM anomalies, the impact of RFI on SM retrievals, and performance outside the validation domain (e.g., forests).

In Section IV, updated performance metrics at the CVS are presented using the six-year data record of the latest SMAP product version for each SM product. The metrics obtained for

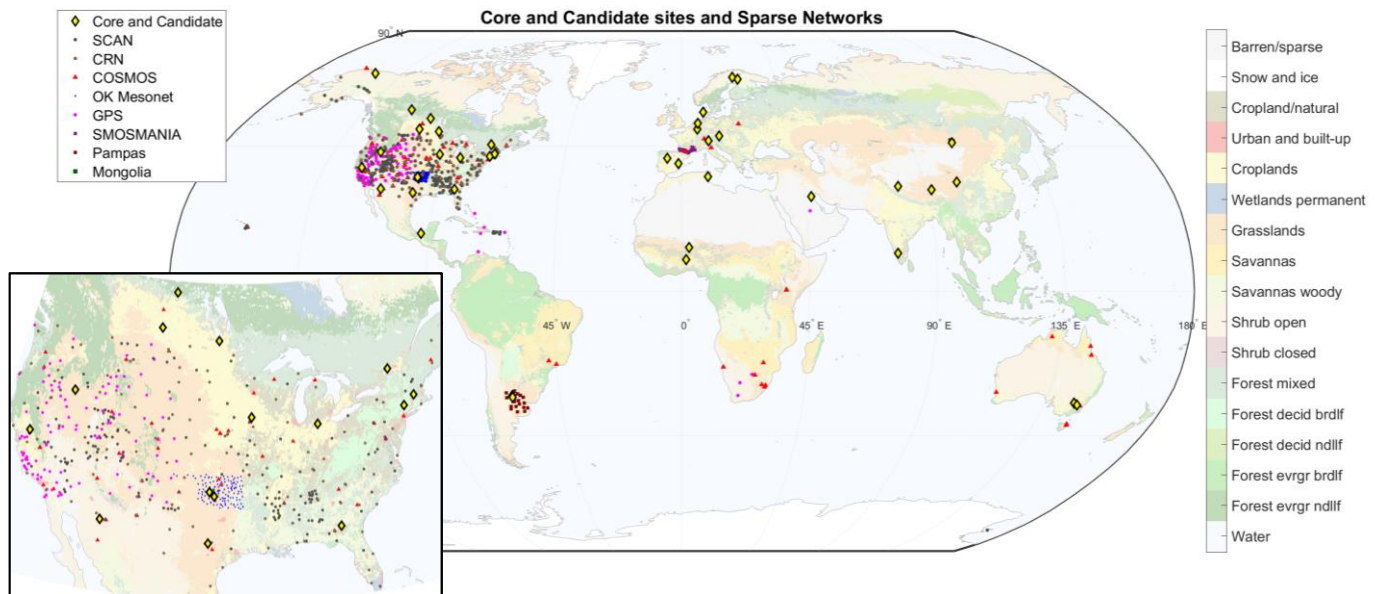


Figure 1. Map of core and candidate validation sites and sparse networks overlaid on a land cover map (MODIS IGBP).

each CVS are averaged to derive an overall representative value.

TABLE III. CORE AND CANDIDATE VALIDATION SITES

	Location	Site Name	No. of ref. pixels <sup>a</sup>					No. sensors (short-term)	Short-term stations	Data period used (month/year) <sup>b</sup>	Field Experiments <sup>c</sup>	Climate Regime <sup>d</sup>	MODIS IGBP <sup>e</sup> Land Cover (True Land Cover)	References
			L2 33	L2 9	L2 3	L4 SF	L4 RZ							
Core	Argentina	Monte Buey	1	1	1	1	-	19		4/15-3/21		Arid	Croplands	
	Australia	Yanco	1	2	4	2	-	38		4/15-8/20	'06, '10, '11, '15	Semi-Arid	Croplands (Crop-grass mix)	[14][99][100][17]
	Benin	AMMA-CATCH-Benin	1*	1	-	1	-	9		4/15-12/20		Arid	Savannas	[101]
	Canada	Kenaston	1	2	2	2	1	36		4/15-8/19	'10	Cold	Croplands	[19][102]
	Canada	Carman	1	1	-	1	-	27(50)	'16	4/15-3/21	'12, '16	Cold	Croplands	[79] [103][104][105]
	Denmark	HOBE	1	1	1	1	-	30		4/15-3/19		Temperate	Croplands (Crop-natural mix)	[15]
	Mongolia	Mongolian grasslands	1	-	-	-	-	14		4/15-10/20		Cold	Grasslands	[106]
	Niger	AMMA-CATCH-Niger	1*	1	-	1	-	6		4/15-12/20		Arid	Grasslands	[101]
	Spain	REMEDHUS	1	2	-	2	-	23		4/15-3/21		Temperate	Croplands	[11]
	Spain	Valencia	-	1	1	1	-	9		4/15-7/17		Arid	Savannas woody	
	The Netherlands	Twente	1	-	-	-	-	20		4/15-12/18		Temperate	Cropland/natural mosaic	[80][16]
	USA (Arizona)	Walnut Gulch	1	2	2	3	-	54(49)	'15	4/15-3/21	'04, '15	Arid	Shrub open	[107][10][108]
	USA (California)	Tonzi Ranch	1*	1	1	1	1	121		4/15-10/20		Temperate	Savannas woody	
	USA (Georgia)	Little River	1	1	-	1	1	33(48)	'17	4/15-12/20	'03	Temperate	Cropland/natural mosaic	[109][110]
	USA (Idaho)	Reynolds Creek	1	1*	-	2	-	15		4/15-12/20		Arid	Grasslands	[111]
	USA (Indiana)	St. Josephs	-	1	-	1	-	15		4/15-3/20		Cold	Croplands	[112]
	USA (Iowa)	South Fork	1	1	-	3	3	20(39)	'16	4/15-12/20	'16	Cold	Croplands	[113][114][52]
	USA (Oklahoma)	Fort Cobb	1	1	-	2	2	15		4/15-12/20	'07	Temperate	Grasslands (Crop-grass mix)	[115] [86]
USA (Oklahoma)	Little Washita	1	1	-	3	2	20		4/15-12/20	'99, '03, '07	Temperate	Grasslands	[115] [86]	
USA (Texas)	TxSON	1	2	3	2	2	40		4/15-3/21		Temperate	Grasslands	[70]	
Candidate	Argentina	Bell Ville	1	-	-	-	-	8		4/15-3/21		Arid	Croplands	
	Australia	Kyeamba	1	1	-	-	-	14		4/15-8/20	'06	Temperate	Croplands	[14] [17]
	Austria	HOAL	1	-	1	-	-	37		4/15-12/20		Temperate	Mixed forest (Crop-grass-forest mix)	[116]
	Canada	Alberta	1	1	-	-	-	30		6/17-9/19		Cold	Mixed forest	
	Canada	BERMS	1	1	-	-	-	17(20)	'22	5/18-10/19	'22	Cold	Forest evergreen needl.	
	Canada	Casselman	-	1	-	-	-	15		4/15-3/21		Cold	Croplands	
	Finland	Sodankylä	1	1	1	-	-	25		4/15-3/21		Cold	Savannas woody (Evergreen needl.)	[117]
	Finland	Saariselkä	-	-	1	-	-	4		4/15-3/21		Cold	Savannas woody (Tundra)	
	Germany	TERENO	1	1	-	-	-	14		4/15-10/15		Temperate	Forest mixed	[118]
	India	Berambadi	-	1	-	-	-	8		4/15-3/18		Tropical	Savannas woody (Crop-natural mix)	[119]
	Italy	EURAC	-	1	1	-	-	12		4/15-3/16		Polar	Shrub open	[120]
	Kuwait	Kuwait	1	1	1	-	-	3(5)	'18	4/15-3/20		Temperate	Barren/sparse	[121]
	Mexico	Tabasco	-	1	-	-	-	2		4/15-9/16	'13-'15	Tropical	Croplands	
	Tibet	Ngari	1	2	-	-	-	25		4/15-8/17		Arid	Barren/sparse	[122]
	Tibet	Naqu	1	1	-	-	-	11		4/15-8/17		Polar	Grasslands	[122]
	Tibet	Maqu	1	1	1	-	-	28		4/15-8/17		Cold	Grasslands	[122]
	Tunisia	Tunisia	1	-	-	-	-	6		4/15-6/20		Arid	Croplands	
	USA (Alaska)	Sagwon	1	1	-	-	-	12		6/17-9/19		Polar	Shrub open	
USA (Mass.)	Harvard Forest	1	1	1	-	-	(23)	'19-'22	4/19-3/21	'22	Cold	Forest deciduous broadleaf	[52]	
USA (New York)	Millbrook	1	1	1	-	-	7(25)	'19-'22	4/15-3/21	'22	Cold	Forest deciduous broadleaf	[123]	

\*) Candidate at this scale

a) A single site can have multiple pixels at various spatial scales (see, e.g., [54]). SF stands for surface and RZ for root-zone.

b) Some but not all sites provide data before 4/15 and/or after 3/21. The range does not account for station outages.

c) Experiments including an L-band retrieval aspect and a large-scale sampling.

d) Koepfen-Geiger climate classification scheme [124]

e) MODIS-based International Geosphere-Biosphere Program classification [125]



### C. Sparse Networks

During the SMAP period (2015-present), a large number of *in situ* SM measurements are available from across the world, albeit with larger concentration in North America (see Figure 1). Most of these measurements are from sparse networks and do not provide SM at the spatial scale of SMAP estimates (Section III.A). Nevertheless, they still provide useful information and greatly expand the spatial coverage of the *in situ* validation. The periodically released SMAP assessment reports include performance metrics computed using the sparse network measurements (e.g., [49]). These metrics are not used in an absolute sense, but give a general indication of retrieval performance and to track consistency between algorithm versions (see Section III.A). Table IV summarizes the networks used in the SMAP validation activities. Most of the networks use conventional probe-based measurements, but the PBO H2O network uses GPS reflectometry to derive SM [126] and the COSMOS network uses neutron measurements to derive SM [127], which have different spatial and vertical support compared to probes.

The use of sparse networks together with other satellite-based and land model-based SM products in TC approaches has been studied extensively (e.g., [128],[129],[130]). The basic principle has been to use TC to statistically characterize point-to-footprint upscaling errors and then apply this characterization to correct for the biasing impact of such error on satellite validation metrics [87]. However, despite this potential, work conducted during the SMAP cal/val project revealed significant limitations in the utility of TC for this purpose. First, TC analysis is insensitive to the presence of additive or multiplicative biases in a time series. Such biases can only be detected (and thus eliminated) if TC is given access to a perfectly calibrated data set (i.e., data lacking bias of any kind and degraded only via additive random noise). This assumption, unfortunately, is not satisfied by the sparse

network SM observations [57]. As a result, TC cannot contribute directly to the specification of either RMSE (which is sensitive to both additive and multiplicative biases) or even ubRMSE (which is sensitive to multiplicative bias). Even for a bias-tolerant metric like R, TC is only truly trustworthy when applied to a SM *anomaly* time series, that is, after removing the multi-year mean (seasonally varying) SM climatology [57],[131]. Therefore, the utility of TC analysis for the calculation of absolute SMAP cal/val metrics from sparse networks is limited to anomaly R.

We computed bias-insensitive performance metrics with respect to the sparse networks with confidence intervals using the six-year data record for each product. The metrics obtained for each network location were averaged based on land cover to derive representative values for each major land cover class (Section IV).

### D. Other Global Satellite Products

Other global satellite-based SM products can be compared directly with SMAP SM estimates by computing the performance metrics between the products at each grid point [137]. Such results do not indicate the correctness of the retrievals - rather the degree of consistency between the products; anomalies in the consistency across the globe can point to potential weak points in the algorithm that are not revealed by geographically limited *in situ* measurements.

The intercomparison can be developed further by applying TC with additional global information sources. Provided that certain statistical assumptions (e.g., mutual error independence) are met, TC can provide unbiased estimates of anomaly R – even in the absence of ground-based observations. Using a triplet of SMAP (or SMOS) SM retrievals, ASCAT SM retrievals and surface SM estimates from land surface models, [58] validated the assumptions underlying TC (over limited areas of the globe containing ground-based observations) and, subsequently, applied TC globally to obtain unbiased, 36-km estimates of anomaly R for SMAP, ASCAT and SMOS SM retrievals. Their results illustrated that SMAP retrievals are significantly outperforming their SMOS or ASCAT equivalents over a large fraction of the globe.

SMOS provides the most relevant satellite products for comparison with the SMAP SM because it uses the same L-band frequency as SMAP. Moreover, SMOS retrievals utilize multi-angle TB measurements to compensate for the vegetation effect, but otherwise the retrieval approaches are similar. The comparisons between SMAP and SMOS were updated over the SMAP lifetime (Section IV). The SMAP PE product on the 9-km grid allows for interpolation of the SM values to the SMOS grid with minimal loss of information because the 9-km SMAP grid spacing is less than a half of the effective resolution of the product (Nyquist Sampling Theorem). Therefore, the metrics (ubRMSD, MD, RMSD, Pearson correlation) were computed over each SMOS grid point with sufficient valid retrievals with the SMAP PE (SCA-V algorithm) and SMOS L3 products after applying the quality flags for both products. The standard bilinear interpolation of the four nearest data points was applied to the SMAP PE product and if any of the values used in the interpolation was flagged, the result was also flagged.

TABLE IV. SPARSE NETWORKS.

Network	Area	Technique	No. of stations <sup>a</sup>	Data period used (month/year) <sup>b</sup>	Ref.
CRN	USA	HydraProbe (triplet)	119	4/15-3/21	[132]
SCAN	USA	HydraProbe	202	4/15-3/21	[133]
Oklahoma Mesonet	Oklahoma, USA	Campbell Scientific 229-L	140	4/15-4/18	[134]
Pampas	Argentina	HydraProbe	20	4/15-3/21	
SMOSMANIA	France	ThetaProbe	21	4/15-12/19	[135] [136]
Mongolian Grasslands	Mongolia	Trime IT	14	4/15-10/20	[106]
PBO H2O	Western USA	GPS reflectometry	124	4/15-12/17	[126]
COSMOS	Mostly USA	Cosmic ray probe	79	4/15-12/19	[127]
OzNet	Australia	CS615/ HydraProbe/ SDI-12	50	4/15-8/20	[14]

a) Total number of stations in network. Not all stations provide data suitable for SMAP product validation.

b) Some but not all sites provide data before 4/15 and/or after 3/21. The date range does not account for station outages.

### E. Global Model-based Products

Like other satellite products, land surface model-based SM products cannot be used as a direct reference for SMAP SM validation [138]. Nevertheless, land models capture the most relevant hydrological processes and SM dynamics based on a large set of input parameters, including precipitation, and therefore, offer an additional source of SM information at global scale and at very high temporal resolution. Various land model products have been used in SMAP validation studies, especially to support TC analyses, including the GMAO Nature Run [57][58], MERRA-2 [34], ECMWF ERA [139], and ECMWF H-TESSSEL [58]. These studies exploit the independence of the model products from remote and *in situ* measurement to compensate remote-sensing error metrics for the impact of random error in model and *in situ* reference products.

### F. Field Experiments

Before the launch, the SMAP field experiments facilitated retrieval algorithm development and testing (e.g., [99], [103]). After the launch, the field experiments have supported the testing of specific algorithm features under a limited set of conditions. These analyses can be supported by CVS data sets as they offer a longer-term reference set, albeit without the supporting measurements provided in a field experiment. For this reason, the SMAP Validation Experiment 2015 (SMAPVEX15) [108] and SMAPVEX16 [104] focused on the locations of the Walnut Gulch, South Fork and Carman CVS sites. The main objectives of these experiments were, respectively, to support the development and validation of the SM spatial disaggregation algorithm used by SMAP and to provide additional insight into algorithms over agricultural domains, where the analysis of the first-year retrievals revealed specific issues [36]. The SMAP Experiment-4 (SMAPEX-4) and SMAPEX-5 in Australia at the Yanco CVS were also designed to support the development and validation of SM downscaling algorithms [100].

Unfortunately, only SMAPEX-4 was executed before the SMAP radar malfunctioned; when SMAPVEX15 and SMAPEX-5 were conducted later in 2015, only the SMAP radiometer was operational. The Copernicus Sentinel-1 mission – now used for the SP product – did not make measurements over the SMAPVEX15 site at that time, but did cover the SMAPEX-5 site [140]. The topic is particularly important because the validation of the spatial disaggregation techniques is exceptionally difficult. The issue is related to the challenge of reliably characterizing the SM areal mean (discussed in Section III.A), since, in order to show that a disaggregation approach works as intended, absolute SM levels in neighboring grid cells need to be known accurately (see also Section IV.B). Furthermore, the difference between the average SM in the cells needs to be large enough for the disaggregation to have a meaningful impact on the retrieved SM pattern. Such cases are extremely difficult to capture during a short-term field experiment.

Airborne measurements providing high-resolution SM retrievals are well-suited for evaluating the effectiveness of downscaling approaches because they provide a spatially distributed SM reference (e.g., [141]). The data collected during SMAPVEX15 (despite not being able to test SMAP radar-based

disaggregation) was useful for examining: sub-footprint spatial heterogeneity; discrepancies in 5-cm *in situ* sensor readings and SMAP measurements with the help of rain gauge records [108]; the effectiveness of a high-resolution hydrological model for SM validation [142], and surface roughness effects on SM retrievals [143].

Over agricultural areas, SM retrievals face rapidly changing vegetation and surface roughness conditions that may be large enough to disrupt L-band retrieval of SM (e.g., [61][60][144]). In SMAPVEX16, the vegetation water content (VWC) and surface roughness were sampled at multiple fields within the South Fork and Carman CVS. VWC was measured multiple times over the growing season. While the VWC calibrated using the experiment data [114] shows significant differences with respect to the data used by the SMAP algorithm, the differences cannot by themselves explain the retrieval errors of the operational algorithm [104].

### G. Assimilation Diagnostics

In any operational data assimilation system, model estimates are routinely confronted with the assimilated observations. The L4 algorithm computes, in 3-hourly intervals, the difference between the SMAP TB observations that are available during each 3-hour period and the corresponding model forecast TB [145]. These observation-minus-forecast (O-F) TB residuals encapsulate the new information provided by the SMAP observations to the modeling system; they consequently form the basis of the L4 SM analysis, which converts the O-F TB residuals into corrections to the modeled SM estimates (a.k.a. SM increments). Because the O-F TB difference involves only TB observations that have not contributed to the corresponding TB forecast, the statistics of the O-F TB residuals provide independent verification of the quality of the model's TB estimates and, by extension, the model's SM estimates within the assimilation system. Specifically, in a well-calibrated, unbiased assimilation system, the time series mean of the O-F TB residuals should be close to zero. Moreover, the typical magnitude of the O-F TB residuals (computed as their time series standard deviation) should be consistent with the error assumptions underpinning the assimilation system. Finally, a well-designed land data assimilation – parameterized with accurate measurements of both model and observation errors – will also minimize the temporal standard deviation of O-F TB residuals. This principle is particularly useful when evaluating new L4 algorithm versions. For example, the land model revisions in Version 4 of the L4 algorithm resulted in a reduction of the typical magnitude of the O-F TB residuals by 0.13 K compared to Version 3 [51].

## IV. UPDATED VALIDATION RESULTS

### A. Radiometer-Based Product (PE)

This section presents updated validation results for the PE algorithm only. Results for the P algorithm are essentially the same (not shown) because of the very similar resolution of the products [47]. Figure 2 shows histograms of the validation metrics for the 6 AM overpasses computed over the CVS, with the average metric indicated by the vertical blue line. Metrics include the ubRMSD, MD, RMSD, R and anomaly R. The numbers in the plots list the average and median metrics, along

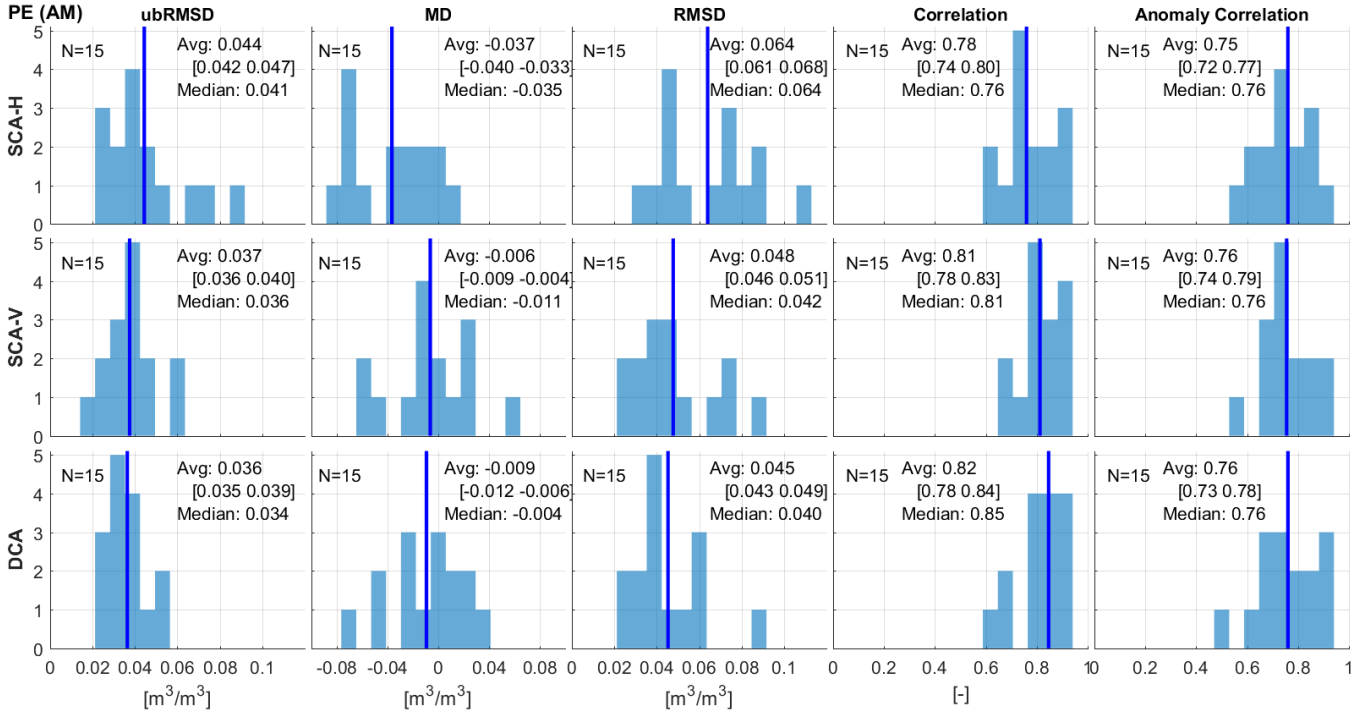


Figure 2. Histograms of the performance metrics over the core validation sites (all available data between March 31, 2015 and March 31, 2021) for the L2SMPE SCA-H, SCA-V and DCA algorithms (version R17000) morning overpasses. The blue line shows average metric values. Text in brackets gives the 95% confidence intervals of the average metric values. Validation period is from April 2015 through March 2021.

with lower and upper bounds of the 95% confidence interval of the average metric (see Appendix B). The performance of the SCA-V (current baseline) and DCA algorithms is essentially the same (well within the confidence interval), while the SCA-H algorithm has a significantly larger MD and ubRMSD.

When categorized based on land cover, the grassland dominant sites have markedly better performance metrics compared to agriculture-dominated sites (Table 5). Across all sites, the DCA performed slightly better than SCA-V (0.036 vs 0.038  $\text{m}^3/\text{m}^3$  ubRMSD). This difference stems from the agricultural sites, where DCA is better at addressing rapid temporal variability in vegetation attenuation characteristics than SCA-V due to the latter's use of a prescribed NDVI-based VWC climatology.

The metrics were also compared to the soil texture and the mean and variance of the VWC at each site. The soil texture was based on the values obtained from *in situ* samples where available and from the global data set used for the SM retrieval otherwise. The only parameter pair that resulted in a meaningful correlation was the MD versus soil clay content. Figure 3 shows the scatterplot for the MD of each algorithm as a function of the clay content at the CVS. SCA-V exhibits the strongest correlation, while DCA has a somewhat weaker correlation; for

SCA-H, the correlation is only marginally meaningful (P-value 0.016). The MD has the most uncertainty of the metrics as discussed in Section III.A, but the level of correlation with clay content is compelling, especially for SCA-V. Although the result seems to indicate a systematic bias in the SMAP SM, the effect may be linked to the vertical distribution of water in the top layers of the soil and the difference between the *in situ* sensor and the SMAP measurements as the clay content impacts the water retention in the soil. It is also possible that the clay content correlates with the upscaling uncertainty contributing to the observed relationship.

Next, Figure 4 shows histograms of ubRMSD and correlation vs. the sparse network measurements for each algorithm, broken down by grasslands and croplands. The SCA-H has somewhat weaker performance than SCA-V and DCA,

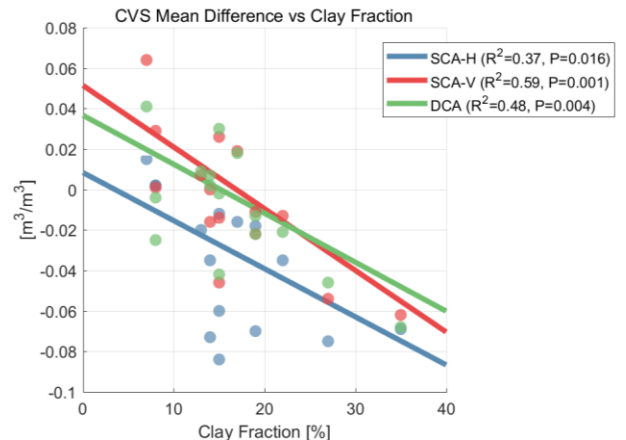


Figure 3. Core validation site (CVS) SM MD vs clay fraction observed at the site for each of the PE algorithms.

TABLE V. L2SMPE ALGORITHM PERFORMANCE OVER CVS DOMINATED BY GRASSLANDS (N=6) AND CROPLANDS (N=6) FOR 6 AM OVERPASSES

L2SMPE	Land	ubRMSD	MD	RMSD	R	Anom. R
SCA-H	Grass	0.033	-0.053	0.066	0.84	0.80
	Crops	0.055	-0.038	0.070	0.73	0.74
SCA-V	Grass	0.030	-0.015	0.038	0.85	0.81
	Crops	0.043	-0.020	0.052	0.79	0.74
DCA	Grass	0.031	-0.010	0.037	0.86	0.82
	Crops	0.039	-0.021	0.050	0.80	0.74

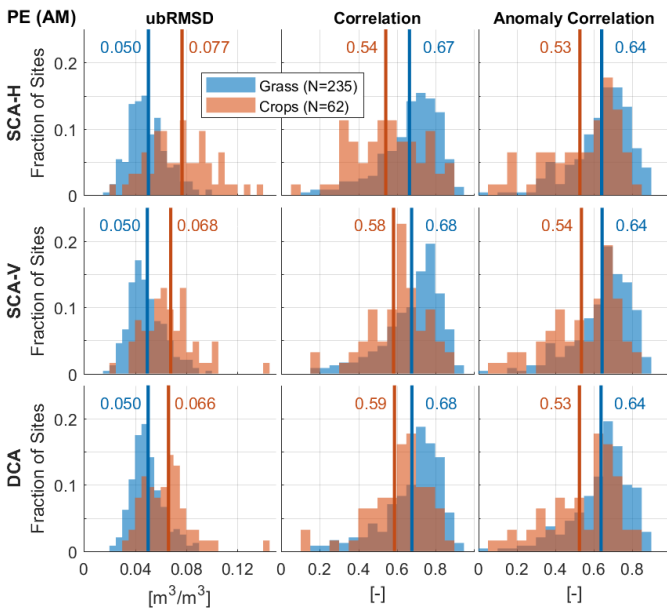


Figure 4. Histograms of the performance metrics over the sparse network sites for the PE SCA-H, SCA-V and DCA algorithms. The blue (red) vertical lines indicate average values for grassland (cropland) stations. The numerical values for the average are provided in each panel and the number of stations (N) is provided in the legend. Validation period is from April 2015 through March 2021.

particularly for croplands, consistent with the CVS results. All algorithms performed significantly worse for croplands compared to grasslands. As discussed in Section III.C, the representativeness errors over sparse network sites are expected to be large, which is reflected also in the level of the ubRMSD and R values, which are generally worse than for CVS. Furthermore, the sparse networks are particularly susceptible to representativeness errors over croplands, which have relatively higher heterogeneity compared to grasslands. Moreover, the *in situ* measurements in croplands are typically installed next to the actual fields to avoid interfering with the cultivation activities, which may exacerbate the problem. The metrics of the core site and sparse network comparisons for AM and PM overpasses are tabulated in Appendix C.

Finally, Figure 5 shows a comparison of the SMAP L3SMPE SCA-V with the SMOS L3 SM product from their morning overpasses. The quality flags of the products were cross applied before the comparisons. For reference, panels (a) and (b) show the time series of mean and standard deviation, respectively, for SMAP SM for the nearly 6-year period from 31 March 2015 to 13 March 2021. As expected, the mean and variation are small in arid and desert regions, such as the Sahara, the Arabian Peninsula, and western Australia. Large variations are seen in the Pampas, in the savannas south of the Sahel region, in the savannas south of the Congo rainforest and in eastern Australia. Panel (c) shows the number of valid SMAP-SMOS data pairs used in the comparison, indicating good coverage except in forested regions. Panel (d) shows the MD between the products. SMAP has generally wetter features in the western Sahel, southern Congo rainforest and eastern India, for example. Panel (e) shows the ubRMSD between SMAP and SMOS. First, regions with low SM variability have naturally low ubRMSD, and regions with high variability are prone to have a high ubRMSD. Therefore, the patterns in SM variability (panel (b))

are, for the most part, repeated in those of the ubRMSD (panel (e)). However, the savannas south of the Sahel and in eastern Australia exhibit relatively low ubRMSD indicating a particularly good match between the SMAP and SMOS products there. Finally, panel (f) shows the correlation between products. Significant parts of the globe have strong correlations, including regions with relatively low SM variability such as western Australia. Owing to the lack of underlying signal, low correlations are expected in areas with extremely low SM variability, such as the Arabian Peninsula and Sahara Desert. There are regions where the differences between the products draw more attention. For example, the Indian subcontinent has relatively large ubRMSD and low correlation, which are not directly explained by high or low variability, respectively, and relatively large and varying MDs. Based on a global TC analysis, [58] suggest that SMAP SM is more reliable than SMOS L3 SM product (v300) in this region.

### B. SMAP/Sentinel-1 Combined Product (SP)

Figure 6 shows the histograms of the validation metrics over the CVS for the SP product at 9-km and 3-km resolution. Anomaly correlation was not computed because the number of SP retrievals does not allow for a reliable computation of the climatology. The number of sites used is less than shown in Table III. The smaller number of sites reflects the limited coverage by Sentinel-1; SP retrievals are also flagged when the site happens to be systematically on the edge of a Sentinel-1 data granule [48]. The average ubRMSD of 0.035  $\text{m}^3/\text{m}^3$  at the 9-km scale is below the 0.04  $\text{m}^3/\text{m}^3$  ubRMSD threshold of the requirement. The difference to the ubRMSD of the PE SCA-V and DCA products is within the statistical confidence intervals. The average MD is reasonable, but with large variation from site to site, which is reflected in the relatively large average RMSD value (compared to that of the SCA-V and DCA algorithms of the PE product). The correlation is in line with the good ubRMSD performance. Considering that the SP algorithm is susceptible to additional uncertainties because of the disaggregation scheme, the performance is overall very satisfactory at 9-km. The narrow distribution of the individual site results around the average value, especially for ubRMSD and correlations, is also a good sign regarding the consistency of the performance.

At the 3-km scale, the overall number of sites is smaller than at the 9-km scale. Additionally, as in the 9-km case, the number of sites used in the comparison is smaller than values shown in Table III because of the limited Sentinel-1 coverage. However, at 3-km, the site-to-site consistency observed in the 9-km evaluation breaks down. The reliability of the aggregate results is somewhat questionable, given the large dispersion of the site-specific results around the average values. However, the requirement of only three stations within footprint for the 3-km sites seems particularly small (relative to requirements enforced at 9- and 33-km) and may be the primary reason for large spread in the metrics. Naturally, some of the dispersion is due to the retrieval performance; however, the current reliability of 3-km results remains relatively low.

Figure 7 shows the sparse network metrics for the SP product for grasslands and croplands at the 3-km scale. The number of stations is not the same as in the PE comparison (Figure 4) because of the coverage of the SP product, as discussed above.

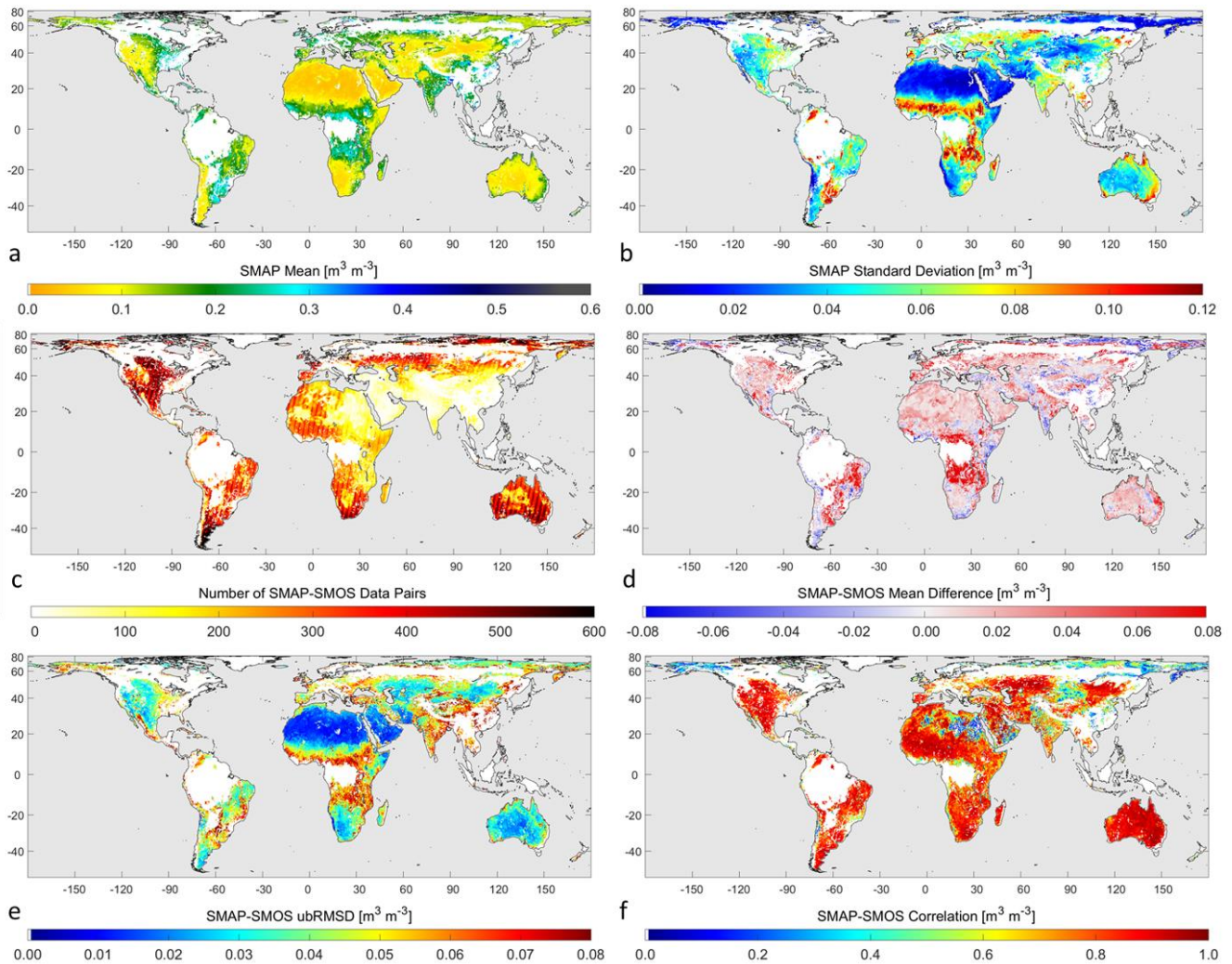


Figure 5. Comparison of SMAP SCA-V SM (R17000) and SMOS Level 3 SM (v300) for morning overpasses between March 31, 2015-March 31, 2021. Time series (a) mean and (b) standard deviation of SMAP SM. (c) Number of SMAP-SMOS data pairs used in the analysis. (d) Mean difference (SMAP minus SMOS) and (e) ubRMSD and (f) Pearson correlation between SMAP and SMOS SM.

The performance over grasslands is identical to that of the PE product. Over croplands, the correlation is very similar to that of the PE product and the average ubRMSD is somewhat smaller.

Figure 8 shows the spatial distribution of SM for a 400 km by 300 km area in Georgia, USA (a) based on the PE product (b) and the SP product at the 3-km resolution (c) and aggregated up to the 9-km resolution (d). Panel (b) illustrates the true resolution of the PE product (33 km) as the SM features are spatially smoothed over the 9-km grid. In contrast, the SM features of the 9-km SP product follow distinctly the 9-km grid, and the same is true for the 3-km resolution (d). The observations are consistent with the SP algorithm principle, which relies on the TB observations to provide the information content on the absolute SM level at the coarse scale (33 km), while the backscatter observations provide the information content on the higher-resolution spatial variations starting from 1 km (not shown).

In principle, the smaller temporal ubRMSD obtained with the SP product over croplands implies that the 3-km SP product, through its disaggregation technique, compensates for some of the heterogeneity that the PE product cannot resolve. However,

in order to evaluate quantitatively this possibility, the skill of the spatial disaggregation would need to be assessed using approaches focused on spatial measures of downscaling performance (as discussed in Section III.F).

### C. Assimilation Product (L4)

Figure 9 summarizes the performance of L4 surface and root-zone SM product across the CVS for the 9-km reference pixels (Table 3). The ubRMSD values for individual CVS locations are relatively tightly clustered around their average values, which are  $0.040 \text{ m}^3/\text{m}^3$  for surface and  $0.027 \text{ m}^3/\text{m}^3$  for root-zone SM. When factoring in the measurement error of the reference pixel-average *in situ* observations, which reference [82] conservatively estimates as  $\text{ubRMSE} \sim 0.01\text{-}0.02 \text{ m}^3/\text{m}^3$ , the L4 product clearly meets the accuracy requirement (i.e., average  $\text{ubRMSE} \leq 0.04 \text{ m}^3/\text{m}^3$ ) specified prior to the launch of SMAP. The MD values are spread across a much wider range of approximately  $\pm 0.1 \text{ m}^3/\text{m}^3$ , with an average MD of  $0.023 \text{ m}^3/\text{m}^3$  for surface and  $0.027 \text{ m}^3/\text{m}^3$  for root-zone SM. The average *absolute* MD is  $0.049 \text{ m}^3/\text{m}^3$  for surface and  $0.047 \text{ m}^3/\text{m}^3$  for root-zone SM. The relatively large MD values originate in the underlying land surface modeling system that

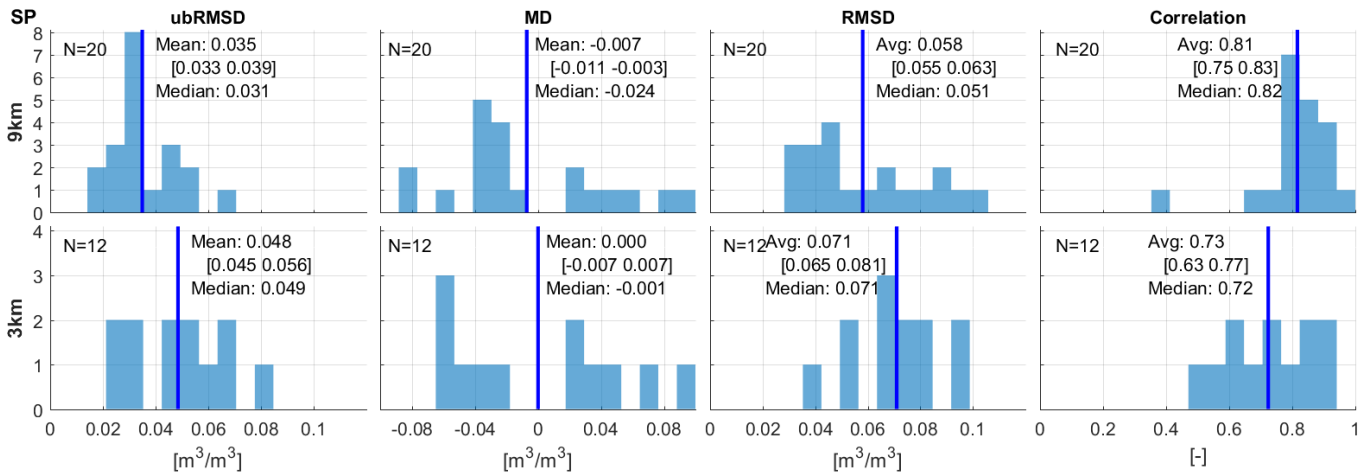


Figure 6. Histograms of the performance metrics over the core validation sites (all available data between March 31, 2015 and March 31, 2021) for the L2SMSP at 9-km and 3-km resolution (version R17000). The blue line shows the average of the values. The brackets show the 95% confidence intervals of the average value. Validation period is from April 2015 through March 2021.

dictates the SM climatology in which the SMAP TB analysis operates. Owing to the large MD values, the RMSDs are noticeably larger than the ubRMSDs and spread across a wider range. The average RMSD is 0.068  $\text{m}^3/\text{m}^3$  for surface and 0.059  $\text{m}^3/\text{m}^3$  for root-zone SM. Finally, correlation values exceed 0.6 at most of the sites, with average correlation values of 0.75 for surface and 0.76 for root-zone SM and average anomaly correlation values of 0.71 for surface and 0.80 for root-zone SM. It must be emphasized that the L4 SM validation presented in Figure 9 is based on 3-hourly data and 9-km pixels at 18 core sites. When evaluated at the 33-km reference pixels (not shown), the ubRMSD for L4 surface SM drops to 0.037  $\text{m}^3/\text{m}^3$  and is thus comparable to that of the L2SMPE product (Figure 2).

Next, Figure 10 summarizes the performance of L4 SM across 178 grassland and 94 cropland sparse network stations. Root-zone measurements are not available at all stations, and at one station each for surface and root-zone SM there is no anomaly correlation metric because the number of available measurements was not sufficient to compute the climatology needed for this metric. The average ubRMSD for L4 surface (root-zone) SM is  $\sim 0.056$  ( $\sim 0.038$ )  $\text{m}^3/\text{m}^3$ , with typical values ranging from 0.03 to 0.09  $\text{m}^3/\text{m}^3$  for surface SM and from 0.02 to 0.07  $\text{m}^3/\text{m}^3$  for root-zone SM. The surface SM ubRMSD is slightly higher for cropland than grassland stations, but the difference is much less pronounced than for the L2 product (Figure 4 and Figure 7); for L4 root-zone SM, the ubRMSD is

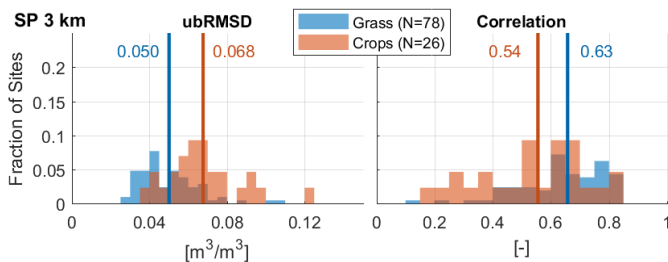


Figure 7. Histograms of the ubRMSD and correlation over the sparse network sites for the SP product at the 3-km resolution. The blue (red) vertical lines indicate average values for grassland (cropland) stations. The numerical values for the average are provided in each panel and the number of stations (N) is provided in the legend. Validation period is from April 2015 through March 2021.

nearly identical for grasslands and croplands. As expected, the ubRMSD at the sparse network stations is larger than at the CVS (Figure 9) due to enhanced levels of upscaling error associated with characterizing SM at the 9 km scale using only one or two point-scale sparse network measurements.

Typical values for the L4 correlation and anomaly correlation at the sparse network stations range from 0.5 to 0.9 at a large majority of the stations, with average metrics falling between 0.65 and 0.74 for surface and between 0.59 and 0.70 for root-zone SM (Figure 10). Interestingly, the L4 correlation and anomaly correlation skill is better by  $\sim 0.04$  on average for cropland than for grassland stations, which is the opposite of the result seen for the L2 product (Figure 4 and Figure 7). Most of the sparse network stations are in the continental US, where the L4 algorithm benefits from high-quality land model background estimates owing to the dense network of precipitation gauges available to force the land surface model. Consequently, L4 SM should be less sensitive than the L2 retrievals to errors incurred in the challenging parameterization of the surface radiative transfer equations over cropland.

Finally, the L4 algorithm's consistency between the assimilated SMAP TB observations and the corresponding TB model forecasts was examined (Section III.G). Figure 11(a) shows a global map of the mean O-F TB residuals from the L4 algorithm, with a global average value of only 0.06 K and an average absolute value of just 0.29 K. The small values primarily reflect the impact of the climatological rescaling of the assimilated SMAP TB observations prior to their assimilation into the land surface model [145]. The L4 algorithm, through this TB rescaling, efficiently assimilates the time series anomaly information contained in the SMAP TB observations while ensuring that the analysis is unbiased. Whereas earlier versions of the L4 algorithm relied on SMOS TB observations to determine the rescaling parameters and resulted in mean absolute O-F TB values of  $\sim 0.6$  K, only SMAP observations are used to compute the rescaling parameters in Version 5. This, together with improvements in the underlying modeling system, considerably improved the algorithm calibration. Figure 11(b) shows the global distribution of the standard deviation of the O-F TB residuals, with values ranging from 2-3 K in very densely and very sparsely vegetated regions

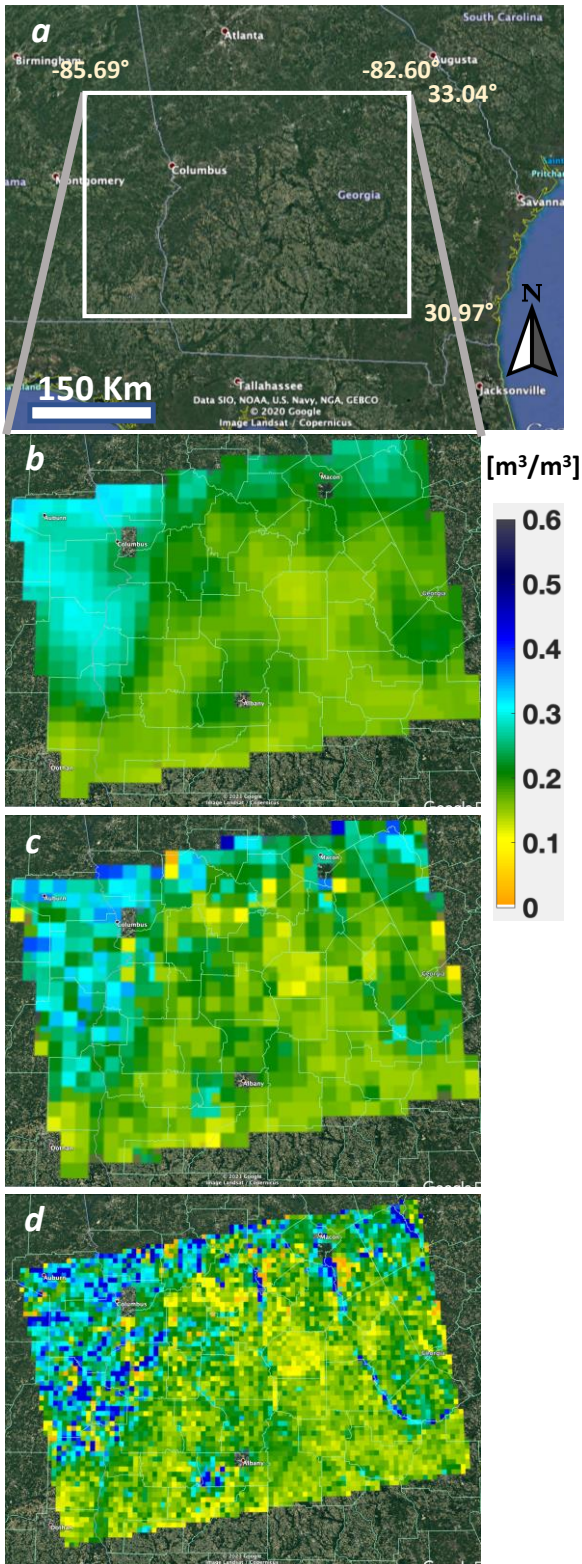


Figure 8. SMAP SM over a region in Georgia, USA. (a) Map of the area. (b) SMAP L2SMPE SM. The grid size is 9-km. (c) SMAP L2SMSP at the 9-km resolution. (d) SMAP L2SMSP at the 3-km resolution.

up to 10-12 K in regions with strong SM variability. The typically very large O-F TB residuals in central Australia are a consequence of gross errors in gauge-based precipitation forcing used in the land modeling system. These errors were revealed by the assimilation of SMAP TB observations in the L4 algorithm [145],[59]. The global average O-F TB standard deviation is 5.5 K in the Version 5 algorithm, which represents a  $\sim 0.2$  K reduction from the corresponding value in the Version 4 algorithm [51]. This reduction in the typical magnitude of the O-F TB residuals reflects improvements in the underlying land surface modeling system as well as in the calibration stability of the assimilated SMAP TB observations [146].

## V. DISCUSSION

The CVS analysis illustrates that the performance of the current versions of the SMAP SM products is as expected based on earlier results. The PE product (and, by extension, the P product) meets the mission requirements by achieving ubRMSD of less than  $0.04 \text{ m}^3/\text{m}^3$  (with both SCA-V and DCA algorithms). The enhancements in the DCA algorithm [50] helped achieve a mean performance of less than  $0.04 \text{ m}^3/\text{m}^3$  ubRMSD also over agricultural areas, although some of the individual sites still exhibit performance not meeting expectations.

The temporal performance of the SP product at 9-km based on the CVS comparisons is satisfactory. The CVS comparisons at 3-km suffer from a lack of sites and the low number of sampling points within the 3-km reference pixels (even though meeting the original requirement of three stations). The validation of high-resolution and/or disaggregated SM products will need significantly more resources in the future for completing a full assessment of these products. The availability of sites meeting the original CVS requirements (Section III.B) at 3-km (or 1-km) is not adequate, and even sites meeting these criteria do not reliably capture the area-average SM. The skill of the spatial downscaling algorithm, as discussed in Section IV.B, is difficult to resolve. Improving the skill requires measurement setups, such as airborne field experiments (e.g., [147],[140]) or particularly dense measurement networks close to each other, which are not commonly available. This is a very significant aspect of the validation of spatially downscaled products that is often overlooked in algorithm assessments.

The performance of L4 surface SM compared well with the PE and SP products over the CVS. Like the SP product, the root-zone product comparisons also suffer from a lack of suitable reference sites, with only 7 independent CVS locations currently available.

As discussed in Section III.B, studies have found that to estimate reliably the *absolute* level of the area-average SM, the number of point measurements required seems to be larger than originally estimated. The SMAP criteria for the number of *spatially distributed* measurement locations was computed based on the relationship between SM variability in the area and the desired accuracy with a certain level of confidence presented in [67]. The original computation assumed 70% confidence, and for the 3-km and 9-km scales, a  $0.05 \text{ m}^3/\text{m}^3$  target accuracy with an assumption of a  $0.05 \text{ m}^3/\text{m}^3$  SM spatial variation within the pixel, which resulted in three and five measurement-location minimums, respectively [54]. With a

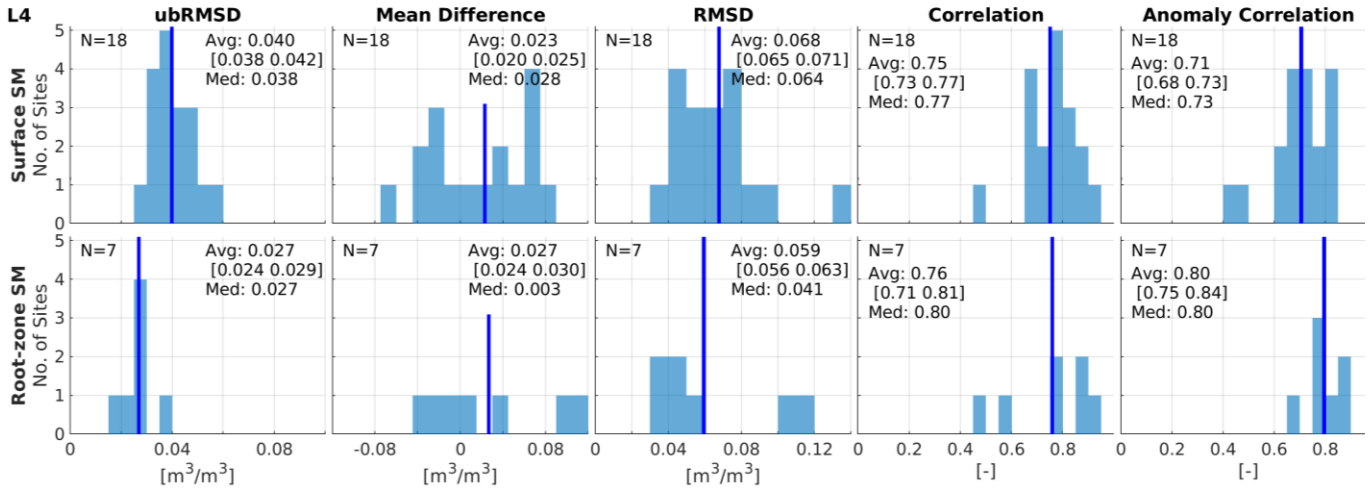


Figure 9. Histograms of performance metrics over the 9-km reference pixels from N core validation sites for L4 SM Vv5030 (top) surface and (bottom) root-zone soil moisture. Thin vertical lines indicate average values. Numerical values for average (Avg) and median (Med) are provided in each panel, along with estimates of 95% statistical confidence intervals for the mean in brackets. Validation period is from April 2015 through March 2021.

90% confidence, a  $0.03 \text{ m}^3/\text{m}^3$  target accuracy and spatial variation assumptions of  $0.06 \text{ m}^3/\text{m}^3$  and  $0.07 \text{ m}^3/\text{m}^3$  (which are more in line with literature, e.g., [67]) the corresponding minimum number of locations would be 17 and 23. For the 33-km scale, a 90% confidence and a  $0.08 \text{ m}^3/\text{m}^3$  SM variability (instead of the original  $0.07 \text{ m}^3/\text{m}^3$ ) would result in 30 locations (instead of 8). These numbers are consistent with the findings of [82] (which also applied 90% confidence in the computations). This translates into a strong desire to not only see more CVS at different spatial scales but to see them deploy even denser networks at all scales to enable an accurate computation of the bias-sensitive SM metrics. For the bias-insensitive metrics (e.g., R or ubRMSE), the requirements are not as strict; the sampling currently available at the 33-km sites provides a solid reference for computing these metrics [82]. At smaller scales (9-km, 3-km, and even 1-km and below), the availability of sites with an adequate sampling, even for resolving the bias-insensitive metrics, is scarcer. Inadequate validation resources will hinder the development of the SM

products overall because spatially representative validation references are needed to reveal the true performance of the algorithms; otherwise, the representativeness errors will dominate the comparisons and algorithm improvement will be difficult.

The SMAP SM products have been investigated in several other studies using various dense and sparse networks. Most of the networks are captured in this study, but there are a few additional ones, including the BIEBRZA-S-1 network in Poland [148], the RSMN network in Romania [149], CTP-SMTMN in China [150] and an agricultural area in China [151]. Several studies include complementary analysis approaches and comparisons to other spaceborne SM products over the *in*

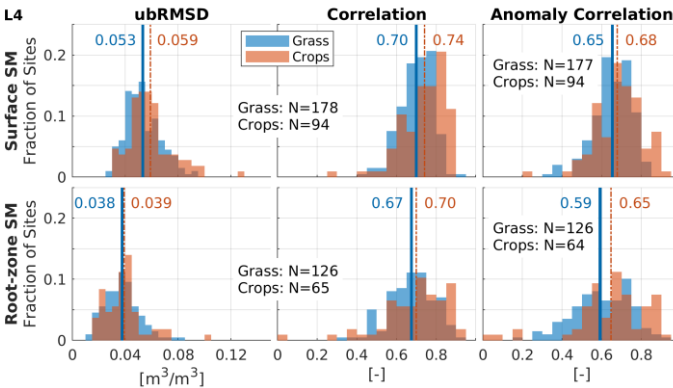


Figure 10. Histograms of performance metrics over the sparse network sites for L4 SM Vv5030 (top) surface and (bottom) root-zone soil moisture, shown separately for grassland and cropland stations. Thin solid (dashed) vertical lines indicate average values for grassland (cropland) stations. The number of stations (N) and numerical values for the average are provided in each panel. Networks include CRN, SCAN, OK Mesonet, SMOSMANIA and OzNet (Table IV). Validation period is from April 2015 through March 2021.

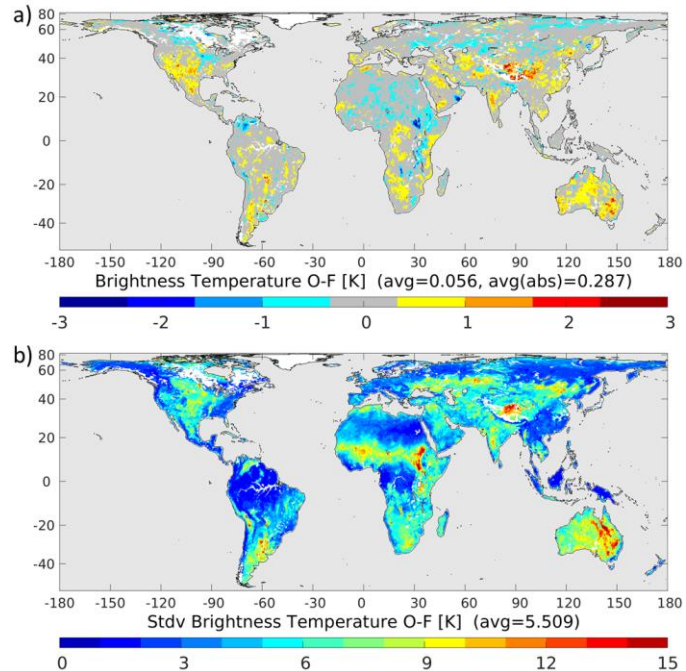


Figure 11. (a) Mean and (b) standard deviation of O-F TB residuals from the L4 algorithm (Vv5030) for April 2015 through March 2021. Areas where too few SMAP TB observations are assimilated to compute the O-F TB statistics are shown in white.



*situ* measurement sites, for example, [36], [152], [25], [148] and [151]. In all these studies, the SMAP performance over the study sites was rated very favorably with respect to the other products. Most of these studies did not include confidence intervals and the differences were small in some cases. In [151], SMAP was the only product to produce reasonable performance over a corn field in China. The study also highlighted the importance of the varying surface roughness in agricultural areas.

Several of these studies also assess the surface temperature used in the SM retrieval algorithm. These comparisons shed light on potential systematic errors arising from the estimation of the effective soil temperature needed for the inversion of the radiative transfer model [153], even though the effective soil temperature (based on GEOS model analysis soil temperature for the SMAP algorithms, [49]) generally differs from the physical soil temperature. This aspect is also particularly important for the consistency of the retrievals between the 6 AM and 6 PM overpasses. Different soil temperatures and the different vertical distribution of temperature in the soil-vegetation continuum can cause systematic differences in the retrievals even though their overall performance metrics are similar.

Capturing SM during or right after precipitation is important for many hydrological applications. Reference [154] quantified the retrieval degradation over CVS during and right after (high vertical gradient in SM) rain events and showed that the SMAP PE product maintains sensitivity to SM even during rain events and suggests that flagging of rain events may be unnecessary to ensure SM retrieval quality.

The utility of the SMAP SM products has been also revealed through other means than comparisons to reference measurements. For example, [155] showed that the L4 product is consistent with SM condition surveys conducted by USDA National Agriculture Statistics Service volunteers indicating the value of the SMAP observations in the prediction of crop yield by geographical area. Reference [156] showed the value of SMAP SM in clarifying water supply controls affecting ecosystem productivity and land-atmosphere CO<sub>2</sub> exchange. Reference [157] showed that the SMAP SM improves evapotranspiration retrievals for water limited regions. References [158] and [159] used an analysis of SMAP SM dynamics to investigate the coupling between SM and energy fluxes. Reference [160] showed the value of the SMAP SM data in improving hydrologic forecasts and [88] showed the SMAP products can achieve meaningful correlation between SM and near-surface air temperature.

During the first three years of the SMAP mission, the objective was to provide SM products that meet the requirements across the validation domain. Thereafter, the objective was broadened to include areas outside of the original validation domain, including forests. The mission is currently engaged in exploring the improvement and validation of SMAP SM products over forested areas through field experiments [52],[161], an added focus on forested candidate CVS (see Table III) and other networks, such as the National Ecological Observatory Network (NEON) [53]. Furthermore, the effort to expand the validation domain includes accounting for the complex soil composition of the boreal and arctic regions. One obstacle in addressing the retrieval issues in these areas has

been the distortion of the global projection of the EASE v2 grid at high latitudes [162]. One solution is the use of the north polar grid projection, which is currently being implemented by the SMAP mission.

## VI. CONCLUSION

The validation of six years of SMAP SM products demonstrate that they meet the accuracy requirements set for the mission. The DCA algorithm of the radiometer-based enhanced product (PE) exhibits the best performance - although the differences between the DCA and SCA-V are small. All of the algorithms show a relative degradation of the performance over croplands where the retrievals are challenged by rapidly changing vegetation and landscape heterogeneity. DCA is the only algorithm maintaining less than 0.04 m<sup>3</sup>/m<sup>3</sup> mean ubRMSD for the agriculturally dominated CVS. The PE product is also consistent with the SMOS L3 product across most parts of the globe. The validation of the 3-km SM product is hindered by the small number of high-quality validation pixels and the limited temporal and spatial coverage of Copernicus Sentinel-1 data. When aggregating the 3-km SM up to 9-km, the evaluation is more robust and the performance is satisfactory. The 9-km L4 product provides surface and root-zone SM, and the performance of both meet the mission accuracy requirement. Notably, L4 SM does not exhibit similar degradation of performance over croplands as the L2 products.

The SMAP validation program has fostered an increased use of *in situ* resources for SM validation. At the same time, studies have found that the spatial sampling requirements for the CVS may need to be even higher than originally planned for SMAP to accurately measure the area-average absolute SM [82]. Going forward, it would be important for the community to support efforts that aim at providing more accurate reference data at all spatial scales. Counterintuitively, the availability of reference data is more restrictive at smaller scales (1 and 3 km) than at coarser scales. Accurate reference data – designed to capture true SM conditions at a variety of spatial scales – are the only way to ensure continued improvement in the quality of satellite-based SM products.

## ACKNOWLEDGMENTS

Funding for this work was provided by the NASA SMAP mission. The research described in this publication was carried out in part at the Jet Propulsion Laboratory, California Institute of Technology, under a contract with the National Aeronautics and Space Administration. Computational resources for L4 production were provided by the NASA High-End Computing program through the NASA Center for Climate Simulation. The University of Salamanca team involvement in this study was supported by the Spanish Ministry of Science, Innovation and Universities (project ESP2017- 89463-C3-3-R), the Castilla y León Government (projects SA112P20 and CLU-2018-04) and the European Regional Development Fund (ERDF). SMAP radiometer and SM data products and SMAP core site validation data are available from the National Snow and Ice and Data Center (<https://nsidc.org/data/smap>). SMAP radar products are available from the Alaska Satellite Facility (<https://asf.alaska.edu/data-sets/sar-data-sets/smap/smap-data-and-imagery/>). This research was supported by the U.S.

Department of Agriculture, Agricultural Research Service. USDA is an equal opportunity provider and employer. This research was a contribution from the Long-Term Agroecosystem Research (LTAR) network. LTAR is supported by the United States Department of Agriculture.

#### APPENDIX A

CEOS has put forward a four-stage validation hierarchy which has been adopted by many data providers (<https://lpvs.gsfc.nasa.gov>). The validation stage increases with increasing product maturity and extensiveness of the validation effort. It is a useful guide to assess the progress of a validation program.

- Stage 1 Validation: Product accuracy is assessed from a small (typically < 30) set of locations and time periods by comparison with in-situ or other suitable reference data.
- Stage 2 Validation: Product accuracy is estimated over a significant (typically > 30) set of locations and time periods by comparison with reference in situ or other suitable reference data. Spatial and temporal consistency of the product, and its consistency with similar products, has been evaluated over globally representative locations and time periods. Results are published in the peer-reviewed literature.
- Stage 3 Validation: Uncertainties in the product and its associated structure are well quantified over a significant (typically > 30) set of locations and time periods representing global conditions by comparison with reference in situ or other suitable reference data. Validation procedures follow community-agreed-upon good practices. Spatial and temporal consistency of the product, and its consistency with similar products, has been evaluated over globally representative locations and time periods. Results are published in the peer-reviewed literature.
- Stage 4 Validation: Validation results for stage 3 are systematically updated when new product versions are released and as the interannual time-series expands. When appropriate for the product, uncertainties in the product are quantified using fiducial reference measurements over a global network of sites and time periods (if available).

#### APPENDIX B

This Appendix describes the computation of the performance metrics and the statistical confidence intervals. The performance metrics are computed following [55]. The root-mean-square difference (RMSD) is defined as:

$$\text{RMSD} = \sqrt{\frac{1}{N} \sum_{i=1}^N (x_i - y_i)^2}, \quad (1)$$

where  $x_i$  is the SMAP soil moisture samples;  $y_i$  is the in situ soil moisture samples (either core validation site or sparse network), and  $N$  is the number of samples. The mean difference (MD) is defined as:

$$\text{MD} = \frac{1}{N} \sum_{i=1}^N x_i - y_i. \quad (2)$$

The unbiased RMSD is defined as:

$$\text{ubRMSD} = \sqrt{\overline{\text{RMSD}^2} - \text{MD}^2} \quad (3)$$

The Pearson correlation ( $R$ ) is defined as:

$$R = \frac{\sum_{i=1}^N (x_i - \bar{x})(y_i - \bar{y})}{\sqrt{\sum_{i=1}^N (x_i - \bar{x})^2 \sum_{i=1}^N (y_i - \bar{y})^2}} \quad (4)$$

where the overbar denotes average. Anomaly  $R$  is computed using the same equation, but the climatology of  $x$  and  $y$  is removed from them before applying the equation.

The confidence intervals (CI) of the aforementioned metrics are calculated following [34]. The CI of the MD for one measurement location is defined as:

$$CI_{MD} = \left[ MD + t_{N-1}^{\alpha/2} \frac{\text{ubRMSD}}{\sqrt{N}}, MD + t_{N-1}^{1-\alpha/2} \frac{\text{ubRMSD}}{\sqrt{N}} \right] \quad (5)$$

where  $t_{N-1}^{\alpha/2}$  is the value at  $\alpha/2$  for the  $t$ -distribution with  $N-1$  degrees of freedom. The CI of the ubRMSD for one measurement location is defined as:

$$CI_{\text{ubRMSD}} = \left[ \text{ubRMSD} \frac{\sqrt{N-1}}{\chi_{N-1}^{1-\alpha/2}}, \text{ubRMSD} \frac{\sqrt{N-1}}{\chi_{N-1}^{\alpha/2}} \right] \quad (6)$$

where  $\chi_{N-1}^{1-\alpha/2}$  is the value at  $1 - \alpha/2$  for the  $\chi$ -distribution with  $N-1$  degrees of freedom. The CI of RMSD for one measurement location is defined as:

$$CI_{RMSD} = \left[ \sqrt{CI_{MD}^2(1) + CI_{\text{ubRMSD}}^2(1)}, \sqrt{CI_{MD}^2(2) + CI_{\text{ubRMSD}}^2(2)} \right] \quad (7)$$

The CI of  $R$  for one measurement location is defined as:

$$CI_R = \left[ \frac{e^{2z_L} - 1}{e^{2z_L} + 1}, \frac{e^{2z_U} - 1}{e^{2z_U} + 1} \right] \quad (8)$$

where

$$z_{L/U} = z_r -/+ \frac{F^{-1}(\alpha/2)}{\sqrt{N_{eff} - 3}} \quad (9)$$

in which  $F^{-1}$  is the normal inverse function with mean 0 and standard deviation 1, and

$$z_r = \frac{1}{2} \ln \left( \frac{1+R}{1-R} \right) \quad (10)$$

In the calculation of the  $CI_R$ , the effective number of samples is computed as:

$$N_{eff} = N \left( \frac{1-\rho}{1+\rho} \right) \quad (11)$$

where

$$\rho = \sqrt{\rho_x \rho_y} \quad (12)$$

in which  $\rho_x$  and  $\rho_y$  are the 1-lag autocorrelation of the SMAP and in situ SM samples, respectively. The confidence interval

for the anomaly R is computed similarly as for R. For the 95% confidence intervals,  $\alpha = 0.05$ .

For the average metrics, the confidence intervals of the separate locations are combined as follows:

$$\overline{CI}_P = \frac{1}{M} \sum_{j=1}^M P_j - \frac{P_j - CI_{P,j}}{\sqrt{M}} \quad (13)$$

where  $P_j$  denotes the metric (MD, ubRMSD, RMSD, R, or anomaly R) whose confidence intervals are computed for site  $j$ , and  $M$  denotes the number of sites.

## APPENDIX C

### A. Result Tables for Radiometer-Based Product (PE)

Table VII and Table VI show the PE product CVS metrics for the 6 AM and 6 PM overpasses, respectively. Table VIII shows the sparse network comparison results for the PE product.

TABLE VII. CVS METRICS FOR THE L2SMPE PRODUCT CATEGORIZED BASED ON THE LAND COVER FOR THE 6 AM OVERPASSES. N REFERS TO THE NUMBER OF DATA POINTS.

L2SMPE (6 AM)		ubRMSD (m <sup>3</sup> /m <sup>3</sup> )			MD (m <sup>3</sup> /m <sup>3</sup> )			RMSD (m <sup>3</sup> /m <sup>3</sup> )			R (-)			Anom R (-)			N		
Land Cover	Site Name	SCA-H	SCA-V	DCA	SCA-H	SCA-V	DCA	SCA-H	SCA-V	DCA	SCA-H	SCA-V	DCA	SCA-H	SCA-V	DCA	SCA-H	SCA-V	DCA
Grasslands	Reynolds Creek	0.041	0.041	0.044	-0.07	-0.022	-0.013	0.081	0.046	0.046	0.64	0.67	0.63	0.58	0.58	0.51	150	174	171
	TxSON	0.022	0.022	0.025	-0.074	-0.017	0.001	0.077	0.028	0.025	0.92	0.93	0.92	0.91	0.91	0.90	828	828	828
	Fort Cobb	0.033	0.029	0.032	-0.084	-0.046	-0.042	0.09	0.054	0.053	0.88	0.89	0.89	0.86	0.87	0.88	767	769	753
	Little Washita	0.022	0.021	0.027	-0.060	-0.014	-0.002	0.064	0.025	0.027	0.90	0.92	0.91	0.87	0.90	0.91	613	613	613
	MAHASRI	0.035	0.033	0.025	-0.018	-0.011	-0.022	0.039	0.035	0.034	0.78	0.80	0.88	0.72	0.76	0.85	295	287	117
	Yanco	0.042	0.038	0.034	-0.016	0.019	0.018	0.045	0.042	0.039	0.90	0.90	0.92	0.85	0.86	0.89	543	542	532
	<b>Average</b>	<b>0.033</b>	<b>0.030</b>	<b>0.031</b>	<b>-0.053</b>	<b>-0.015</b>	<b>-0.010</b>	<b>0.066</b>	<b>0.038</b>	<b>0.037</b>	<b>0.84</b>	<b>0.85</b>	<b>0.86</b>	<b>0.80</b>	<b>0.81</b>	<b>0.82</b>			
Croplands	South Fork	0.052	0.046	0.040	-0.075	-0.054	-0.046	0.091	0.071	0.062	0.70	0.74	0.77	0.76	0.76	0.76	351	358	324
	Kenaston	0.041	0.030	0.031	-0.035	0.00	0.007	0.053	0.030	0.031	0.72	0.78	0.79	0.79	0.8	0.78	265	266	266
	Carman	0.085	0.062	0.051	-0.069	-0.062	-0.069	0.109	0.088	0.085	0.61	0.67	0.70	0.64	0.67	0.72	421	427	429
	Monte Buey	0.067	0.045	0.033	-0.035	-0.013	-0.021	0.075	0.047	0.040	0.76	0.85	0.85	0.76	0.82	0.82	332	350	359
	REMEDHUS	0.039	0.038	0.038	-0.020	0.007	0.010	0.044	0.039	0.039	0.83	0.85	0.85	0.69	0.69	0.68	678	730	690
	HOBE	0.045	0.036	0.042	0.002	0.001	-0.004	0.045	0.036	0.042	0.75	0.86	0.85	0.77	0.74	0.69	124	124	124
	<b>Average</b>	<b>0.055</b>	<b>0.043</b>	<b>0.039</b>	<b>-0.038</b>	<b>-0.020</b>	<b>-0.021</b>	<b>0.070</b>	<b>0.052</b>	<b>0.050</b>	<b>0.73</b>	<b>0.79</b>	<b>0.80</b>	<b>0.74</b>	<b>0.74</b>	<b>0.74</b>			
Crops/natural	Little River	0.045	0.036	0.040	0.014	0.064	0.040	0.047	0.074	0.057	0.73	0.77	0.78	0.68	0.71	0.74	721	718	722
	Twente	0.071	0.060	0.054	0.002	0.029	-0.025	0.071	0.066	0.060	0.81	0.81	0.82	0.64	0.66	0.67	449	449	448
	<b>Average</b>	<b>0.058</b>	<b>0.048</b>	<b>0.047</b>	<b>0.008</b>	<b>0.046</b>	<b>0.008</b>	<b>0.059</b>	<b>0.070</b>	<b>0.058</b>	<b>0.77</b>	<b>0.79</b>	<b>0.80</b>	<b>0.66</b>	<b>0.66</b>	<b>0.71</b>			
Shrub open	Walnut Gulch	0.025	0.026	0.028	-0.014	0.024	0.029	0.029	0.036	0.040	0.76	0.77	0.69	0.74	0.75	0.64	315	335	301

TABLE VI. CVS METRICS FOR THE L2SMPE PRODUCT CATEGORIZED BASED ON THE LAND COVER FOR THE 6 PM OVERPASSES. N REFERS TO THE NUMBER OF DATA POINTS.

L2SMPE (6 PM)		ubRMSD (m <sup>3</sup> /m <sup>3</sup> )			MD (m <sup>3</sup> /m <sup>3</sup> )			RMSD (m <sup>3</sup> /m <sup>3</sup> )			R (-)			Anom R (-)			N		
Land Cover	Site Name	SCA-H	SCA-V	DCA	SCA-H	SCA-V	DCA	SCA-H	SCA-V	DCA	SCA-H	SCA-V	DCA	SCA-H	SCA-V	DCA	SCA-H	SCA-V	DCA
Grasslands	Reynolds Creek	0.047	0.044	0.046	-0.074	-0.027	-0.017	0.087	0.051	0.049	0.55	0.63	0.6	0.57	0.61	0.55	207	246	240
	TxSON	0.02	0.019	0.022	-0.068	-0.016	-0.001	0.071	0.025	0.022	0.93	0.93	0.93	0.9	0.91	0.89	900	900	900
	Fort Cobb	0.038	0.03	0.03	-0.081	-0.05	-0.051	0.089	0.058	0.059	0.87	0.89	0.87	0.85	0.87	0.85	847	856	798
	Little Washita	0.025	0.021	0.026	-0.048	-0.009	-0.002	0.054	0.023	0.026	0.9	0.91	0.90	0.87	0.9	0.89	642	642	639
	MAHASRI	0.034	0.031	0.031	-0.026	-0.018	-0.019	0.043	0.035	0.037	0.76	0.77	0.70	0.72	0.73	0.64	353	448	213
	Yanco	0.048	0.041	0.033	-0.012	0.016	0.011	0.05	0.044	0.035	0.90	0.91	0.92	0.84	0.85	0.84	573	575	521
	<b>Average</b>	<b>0.035</b>	<b>0.031</b>	<b>0.031</b>	<b>-0.052</b>	<b>-0.017</b>	<b>-0.013</b>	<b>0.066</b>	<b>0.040</b>	<b>0.038</b>	<b>0.82</b>	<b>0.84</b>	<b>0.82</b>	<b>0.79</b>	<b>0.81</b>	<b>0.78</b>			
Croplands	South Fork	0.052	0.045	0.038	-0.068	-0.057	-0.054	0.086	0.073	0.066	0.73	0.76	0.77	0.78	0.78	0.77	357	367	297
	Kenaston	0.036	0.025	0.03	-0.031	-0.001	0.006	0.047	0.025	0.031	0.83	0.89	0.85	0.85	0.86	0.83	366	367	365
	Carman	0.085	0.066	0.052	-0.072	-0.065	-0.072	0.111	0.093	0.089	0.50	0.53	0.57	0.57	0.58	0.62	494	495	488
	Monte Buey	0.062	0.04	0.033	-0.005	0.001	-0.022	0.062	0.04	0.04	0.83	0.88	0.8	0.8	0.86	0.83	315	336	338
	REMEDHUS	0.04	0.037	0.035	-0.029	-0.007	-0.007	0.049	0.038	0.036	0.82	0.85	0.86	0.71	0.7	0.67	704	860	805
	HOBE	0.043	0.035	0.042	0.01	0.008	0.000	0.044	0.036	0.042	0.72	0.85	0.84	0.74	0.66	0.62	123	123	123
	<b>Average</b>	<b>0.053</b>	<b>0.042</b>	<b>0.038</b>	<b>-0.032</b>	<b>-0.02</b>	<b>-0.025</b>	<b>0.067</b>	<b>0.051</b>	<b>0.050</b>	<b>0.74</b>	<b>0.79</b>	<b>0.78</b>	<b>0.74</b>	<b>0.74</b>	<b>0.72</b>			
Crops/natural	Little River	0.044	0.036	0.038	0.023	0.067	0.043	0.05	0.076	0.057	0.76	0.76	0.78	0.71	0.71	0.72	642	637	641
	Twente	0.072	0.059	0.054	0.019	0.03	-0.026	0.074	0.067	0.059	0.83	0.82	0.82	0.64	0.64	0.63	562	562	562
	<b>Average</b>	<b>0.058</b>	<b>0.048</b>	<b>0.046</b>	<b>0.021</b>	<b>0.049</b>	<b>0.009</b>	<b>0.062</b>	<b>0.071</b>	<b>0.058</b>	<b>0.80</b>	<b>0.79</b>	<b>0.8</b>	<b>0.68</b>	<b>0.68</b>	<b>0.68</b>			
Shrub open	Walnut Gulch	0.026	0.025	0.026	-0.026	0.01	0.013	0.036	0.027	0.029	0.70	0.73	0.63	0.71	0.71	0.57	573	669	596

TABLE VIII. SPARSE NETWORKS METRICS FOR THE L2SMPE PRODUCT CATEGORIZED BASED ON THE LAND COVER FOR THE 6 AM AND 6 PM OVERPASSES. N REFERS TO THE NUMBER OF STATIONS.

Land Cover	Over-pass	ubRMSD (m <sup>3</sup> /m <sup>3</sup> )			R (-)			Anom R (-)			N
		SCA-H	SCA-V	DCA	SCA-H	SCA-V	DCA	SCA-H	SCA-V	DCA	
Grasslands	AM	0.050	0.050	0.050	-0.076	-0.031	-0.018	0.096	0.073	0.071	0.67
	PM	0.050	0.049	0.049	-0.071	-0.030	-0.020	0.093	0.072	0.071	0.66
Croplands	AM	0.077	0.068	0.066	-0.039	-0.010	-0.007	0.122	0.108	0.104	0.54
	PM	0.076	0.066	0.064	-0.032	-0.012	-0.014	0.119	0.105	0.100	0.55
Crop/Natural vegetation mosaic	AM	0.071	0.063	0.062	-0.036	0.011	-0.008	0.104	0.090	0.090	0.58
	PM	0.071	0.062	0.061	-0.013	0.021	-0.001	0.098	0.090	0.088	0.58
Open shrublands	AM	0.041	0.040	0.041	-0.045	0.000	0.015	0.066	0.055	0.058	0.52
	PM	0.042	0.042	0.042	-0.050	-0.003	0.012	0.069	0.055	0.058	0.47
Savannas	AM	0.037	0.035	0.037	-0.037	-0.003	-0.006	0.065	0.053	0.054	0.83
	PM	0.038	0.037	0.037	-0.030	0.002	-0.003	0.063	0.056	0.056	0.83
Woody savannas	AM	0.060	0.055	0.055	-0.029	0.024	0.013	0.096	0.090	0.085	0.7
	PM	0.059	0.054	0.053	-0.015	0.030	0.018	0.093	0.091	0.085	0.7
Barren/Sparse	AM	0.022	0.022	0.023	-0.017	0.014	0.022	0.036	0.034	0.038	0.51
	PM	0.023	0.024	0.024	-0.021	0.013	0.020	0.038	0.034	0.037	0.43
Evergreen needleleaf forest	AM	0.038	0.035	0.031	-0.037	0.022	0.062	0.062	0.052	0.07	0.75
	PM	0.038	0.037	0.039	-0.041	0.021	0.062	0.063	0.055	0.074	0.66
Mixed forest	AM	0.063	0.062	0.061	-0.068	-0.024	-0.014	0.092	0.067	0.063	0.71
	PM	0.058	0.055	0.053	-0.057	-0.017	-0.008	0.081	0.058	0.054	0.77

B. Result Tables for SMAP/Sentinel-1 Combined Product (SP)

Table IX and Table XI show the SP product CVS metrics for the 9-km and 3-km scales, respectively. Table X shows the sparse network comparison results for the SP product at the 3-km scale.

TABLE IX. CVS METRICS FOR THE L2SMSP PRODUCT AT THE 9-KM SCALE CATEGORIZED BASED ON THE LAND COVER. PIX REFERS TO THE PIXEL ID WITHIN THE SITE. N REFERS TO THE NUMBER OF DATA POINTS.

Land Cover	Site Name	Pix	ub RMSD (m <sup>3</sup> /m <sup>3</sup> )	MD (m <sup>3</sup> /m <sup>3</sup> )	RMSD (m <sup>3</sup> /m <sup>3</sup> )	R (-)	N	
Grasslands	Walnut Gulch	6	0.023	0.028	0.037	0.88	42	
	TxSON	2	0.017	-0.031	0.036	0.9	14	
	TxSON	11	0.02	-0.024	0.031	0.91	64	
	Fort Cobb	11	0.03	-0.019	0.035	0.85	66	
	Little Washita	25	0.033	-0.028	0.043	0.84	155	
	Niger	2	0.031	0.026	0.041	0.87	63	
	Yanco	2	0.055	-0.011	0.056	0.88	58	
	Yanco	16	0.05	0.041	0.065	0.8	83	
	<b>Average</b>			<b>0.032</b>	<b>-0.002</b>	<b>0.043</b>	<b>0.87</b>	
	Croplands	South Fork	10	0.045	-0.06	0.075	0.79	57
St Josephs		7	0.03	-0.034	0.046	0.68	31	
Kenaston		10	0.032	-0.082	0.088	0.79	44	
Kenaston		11	0.036	-0.08	0.087	0.76	35	
Carman		6	0.07	-0.037	0.079	0.4	46	
Monte Buey		11	0.023	-0.039	0.045	0.93	19	
REMEDHUS		3	0.047	0.087	0.099	0.79	118	
REMEDHUS		8	0.043	-0.039	0.059	0.77	329	
Valencia		6	0.023	-0.023	0.033	0.77	15	
<b>Average</b>				<b>0.039</b>	<b>-0.034</b>	<b>0.068</b>	<b>0.74</b>	
Crops/natural		Little River	21	0.03	0.09	0.095	0.84	32
Shrub open	Walnut Gulch	7	0.031	0.06	0.068	0.79	109	

TABLE X. SPARSE NETWORK COMPARISON RESULTS FOR THE L2SMSP PRODUCT AT THE 3-KM SCALE CATEGORIZED BASED ON THE LAND COVER. N REFERS TO THE NUMBER OF STATIONS.

Land Cover	ubRMSD (m <sup>3</sup> /m <sup>3</sup> )	R (-)	N
Grasslands	0.050	0.63	78
Croplands	0.068	0.54	26
Crops/natural	0.077	0.25	3
Shrubs open	0.042	0.57	32
Savannas	0.036	0.47	2
Woody Savanna	0.069	0.38	1
Barren/Sparse	0.017	0.72	2

TABLE XI. CVS METRICS FOR THE L2SMSP PRODUCT AT THE 3-KM SCALE CATEGORIZED BASED ON THE LAND COVER. PIX REFERS TO THE PIXEL ID WITHIN THE SITE. N REFERS TO THE NUMBER OF DATA POINTS.

Land Cover	Site Name	Pix	ub RMSD (m <sup>3</sup> /m <sup>3</sup> )	MD (m <sup>3</sup> /m <sup>3</sup> )	RMSD (m <sup>3</sup> /m <sup>3</sup> )	R (-)	N	
Grasslands	TxSON	1	0.031	0.060	0.068	0.79	109	
	TxSON	2	0.017	-0.031	0.036	0.90	14	
	Yanco	2	0.030	0.090	0.095	0.84	32	
	Yanco	3	0.032	-0.082	0.088	0.79	44	
	Yanco	4	0.036	-0.080	0.087	0.76	35	
	<b>Average</b>			<b>0.039</b>	<b>-0.034</b>	<b>0.068</b>	<b>0.74</b>	
	Croplands	Kenaston	1	0.020	-0.024	0.031	0.91	64
Kenaston		2	0.03	-0.019	0.035	0.85	66	
Monte Buey		1	0.033	-0.028	0.043	0.84	155	
Valencia		1	0.045	-0.06	0.075	0.79	57	
Yanco		1	0.030	-0.034	0.046	0.68	31	
<b>Average</b>			<b>0.030</b>	<b>0.090</b>	<b>0.095</b>	<b>0.84</b>		
Shrub open	Walnut Gulch	5	0.023	0.028	0.037	0.88	42	

C. Result Tables for Assimilation Product (L4)

Table XII shows the L4 product CVS metrics. Table XIII shows the sparse network comparison results for the L4 product.

TABLE XII. CVS METRICS FOR L4 SURFACE (SF) AND ROOT-ZONE (RZ) SM AT THE 9-KM SCALE CATEGORIZED BASED ON LAND COVER.

L4 (9-km, 3-hourly)		ubRMSD (m <sup>3</sup> /m <sup>3</sup> )		MD (m <sup>3</sup> /m <sup>3</sup> )		RMSD (m <sup>3</sup> /m <sup>3</sup> )		R (-)		Anomaly R (-)		No. of 9-km ref. pixels		Avg. no. of 3-hr data per ref. pix.	
Land Cover	Site Name	SF	RZ	SF	RZ	SF	RZ	SF	RZ	SF	RZ	SF	RZ	SF	RZ
Grasslands	Reynolds Creek	0.044	n/a	-0.021	n/a	0.049	n/a	0.70	n/a	0.69	n/a	2	n/a	3,222	n/a
	TxSON	0.033	0.019	0.073	0.110	0.080	0.112	0.86	0.89	0.83	0.87	2	2	14,583	13,969
	Fort Cobb	0.037	0.026	-0.042	0.000	0.056	0.041	0.82	0.80	0.83	0.78	2	2	12,239	9,510
	Little Washita	0.037	0.029	-0.021	-0.021	0.046	0.037	0.78	0.76	0.77	0.74	3	2	9,181	3,850
	Niger	0.039	n/a	0.067	n/a	0.078	n/a	0.48	n/a	0.44	n/a	1	n/a	1,053	n/a
	Yanco	0.057	n/a	-0.028	n/a	0.064	n/a	0.85	n/a	0.82	n/a	2	n/a	10,207	n/a
	<b>Average</b>	<b>0.041</b>	<b>0.025</b>	<b>0.005</b>	<b>0.029</b>	<b>0.062</b>	<b>0.063</b>	<b>0.75</b>	<b>0.81</b>	<b>0.73</b>	<b>0.79</b>				
Croplands	South Fork	0.055	0.037	0.021	0.003	0.063	0.050	0.66	0.48	0.75	0.82	3	3	9,319	4,743
	Kenaston	0.032	0.021	-0.019	-0.033	0.039	0.039	0.76	0.90	0.76	0.92	2	1	4,911	2,803
	Carman	0.065	n/a	0.056	n/a	0.086	n/a	0.41	n/a	0.36	n/a	1	n/a	8,274	n/a
	Monte Buey	0.036	n/a	-0.071	n/a	0.079	n/a	0.79	n/a	0.81	n/a	1	n/a	3,738	n/a
	REMEDHUS	0.042	n/a	0.064	n/a	0.098	n/a	0.67	n/a	0.63	n/a	2	n/a	9,667	n/a
	HOBE	0.045	n/a	-0.013	n/a	0.047	n/a	0.83	n/a	0.63	n/a	1	n/a	1,067	n/a
	St Josephs	0.041	n/a	0.056	n/a	0.070	n/a	0.72	n/a	0.66	n/a	1	n/a	2,413	n/a
	<b>Average</b>	<b>0.045</b>	<b>0.029</b>	<b>0.013</b>	<b>-0.015</b>	<b>0.069</b>	<b>0.045</b>	<b>0.69</b>	<b>0.69</b>	<b>0.65</b>	<b>0.87</b>				
Crops/natural	Little River	0.031	0.027	0.081	0.097	0.087	0.101	0.80	0.60	0.79	0.65	1	1	4,290	3,471
Open shrubs	Walnut Gulch	0.035	n/a	0.040	n/a	0.060	n/a	0.68	n/a	0.66	n/a	3	n/a	12,363	n/a
Woody savannas	Tonzi Ranch	0.036	0.029	0.012	0.033	0.038	0.035	0.93	0.90	0.72	0.80	1	1	9,283	3,667
	Valencia	0.027	n/a	0.066	n/a	0.072	n/a	0.65	n/a	0.73	n/a	1	n/a	1,766	n/a
Savannas	Benin	0.048	n/a	0.114	n/a	0.124	n/a	0.75	n/a	0.32	n/a	1	n/a	2,523	n/a

TABLE XIII. SPARSE NETWORKS METRICS FOR L4 SURFACE (SF) AND ROOT-ZONE (RZ) SM CATEGORIZED BASED ON LAND COVER.

L4 (9-km, 3-hr)	ubRMSD		R		Anomaly R		No. of stations			
	(m <sup>3</sup> /m <sup>3</sup> )		(-)		(-)		ubRMSD, R		Anomaly R	
	SF	RZ	SF	RZ	SF	RZ	SF	RZ	SF	RZ
Grasslands	0.053	0.038	0.70	0.67	0.65	0.59	178	126	177	126
Croplands	0.059	0.039	0.74	0.70	0.68	0.65	94	65	94	64
Crop/Natural vegetation mosaic	0.059	0.043	0.72	0.67	0.66	0.64	41	37	41	37
Open shrublands	0.037	0.026	0.70	0.67	0.64	0.62	27	12	27	12
Woody savannas	0.063	0.044	0.69	0.67	0.59	0.58	31	24	31	24
Barren/Sparse	0.024	n/a	0.72	n/a	0.65	n/a	2	n/a	2	n/a
Evergreen needleleaf forest	0.058	0.044	0.71	0.64	0.58	0.55	7	4	7	4
Mixed forest	0.058	0.040	0.70	0.68	0.61	0.65	23	17	23	16
Evergreen broadleaf forest	0.036	0.028	0.51	0.25	0.47	0.23	1	1	1	1
Deciduous broadleaf forest	0.049	0.034	0.73	0.70	0.67	0.67	15	11	14	9
Urban and built-up	0.071	0.038	0.58	0.67	0.62	0.70	4	3	3	2

## REFERENCES

- [1] Entekhabi, D., S. Yueh, P. O'Neill, and K. Kellogg. (2014). SMAP Handbook – Soil Moisture Active Passive: Mapping Soil Moisture and Freeze/Thaw from Space. SMAP Project, Jet Propulsion Laboratory, Pasadena, CA.
- [2] Schmugge, T.J., P.E. O'Neill, J.R. Wang (1986). Passive Microwave Soil Moisture Research. IEEE Trans. Geosci. Remote Sens., GE-24(1), 12-22.
- [3] Colliander, A. (2014). Calibration and Validation. Encyclopedia of Remote Sensing, E. G. Njoku (ed.). Springer, 2014. ISBN: 0387367004
- [4] Loew, A., Bell, W., Brocca, L., Bulgin, C. E., Burdanowitz, J., Calbet, X., Donner, R. V., Ghent, D., Gruber, A., Kaminski, T., Kinzel, J., Klepp, C., Lambert, J. C., Schaepman-Strub, G., Schröder, M. and Verhoelst, T. (2017). Validation practices for satellite-based Earth observation data across communities, Rev. Geophys., 55(3), 779–817, doi:10.1002/2017RG000562
- [5] Jackson, T.J., A. Colliander, J. Kimball, R. Reichle, W. Crow, D. Entekhabi, P. O'Neill, E. Njoku. (2014). SMAP Science Data Calibration and Validation Plan. SMAP Mission. Jet Propulsion Laboratory. March 14, 2014. <http://smap.jpl.nasa.gov/science/validation/>
- [6] Kawanishi, T., T. Sezai, Y. Ito, K. Imaoka, T. Takeshima, Y. Ishido, A. Shibata, M. Miura, H. Inhata, and R. W. Spencer (2003). The Advanced Microwave Scanning Radiometer for the Earth Observing System (AMSR-E), NASDA's Contribution to the EOS for Global Energy and Water Cycle Studies. IEEE Trans. Geosci. Rem. Sens., Vol. 41, No. 2, pp. 184-194.
- [7] Mecklenburg, S., M. Drusch, L. Kaleschke, N. Rodriguez-Fernandez, N. Reul, Y. Kerr, J. Font, M. Martin-Neira, R. Oliva, et al. (2016). ESA's Soil Moisture and Ocean Salinity mission: From Science to Operational Applications. Remote Sens. Environ., Vol. 180, pp. 3-18. doi: 10.1016/j.rse.2015.12.025
- [8] Bosch, D.D., V. Lakshmi, T.J. Jackson, M. Choi, J.M. Jacobs. (2006). Large Scale Measurements of Soil Moisture for Validation of Remotely Sensed Data: Georgia Soil Moisture Experiment 2003. J. Hydrology. Vol. 323, pp. 120-137. DOI: 10.1016/j.jhydrol.2005.08.024
- [9] Cosh, M.H., T. J. Jackson, P. J. Starks, G. C. Heathman. (2006). Temporal Stability of Surface Soil Moisture in the Little Washita River Watershed and Its Applications in Satellite Soil Moisture Product Validation," J. Hydrol., Vol. 323, pp. 168-177. <https://doi.org/10.1016/j.jhydrol.2005.08.020>
- [10] Cosh, M.H., T.J. Jackson, S. Moran, R. Bindlish. (2008). Temporal persistence and stability of surface soil moisture in a semi-arid watershed. Remote Sensing of Environment, Vol. 112, No. 2, pp. 304-313. <https://doi.org/10.1016/j.rse.2007.07.001>.
- [11] Martinez-Fernandez, J., A. Ceballos, "Mean Soil Moisture Estimation Using Temporal Stability Analysis," Vol. 312, pp. 28-38, 2005. doi:10.1016/j.jhydrol.2005.02.007
- [12] Rudiger, C., G. Hancock, H. M. Hemakumara, B. Jacobs, J. D. Kalma, C. Martinez, M. Thyer, J. P. Walker, T. Wells, and G. R. Willgoose (2007), Goulburn River experimental catchment data set, Water Resour. Res., 43, W10403, doi:10.1029/2006WR005837.
- [13] Jackson, T. J., Cosh, M. H., Bindlish, R., Starks, P. J., Bosch, D. D., Seyfried, M., Goodrich, D. C., Moran, M. S., & Du, J. (2010). Validation of Advanced Microwave Scanning Radiometer Soil Moisture Products. IEEE Transactions on Geoscience and Remote Sensing, 48(12), 4256–4272. <https://doi.org/10.1109/tgrs.2010.2051035>.
- [14] Smith, A. B., J. P. Walker, A. W. Western, R. I. Young, K. M. Ellett, R. C. Pipunic, R. B. Grayson, L. Siriwardena, F. H. S. Chiew, and H. Richter (2012), The Murrumbidgee soil moisture monitoring network data set, Water Resour. Res., 48, W07701, doi:10.1029/2012WR011976.
- [15] Bircher, S., N. Skou, K. H. Jensen, J. P. Walker, and L. Rasmussen. (2012). A soil moisture and temperature network for SMOS validation in Western Denmark, Hydrol. Earth Syst. Sci., 16, 1445–1463, <https://doi.org/10.5194/hess-16-1445-2012>, 2012.
- [16] Dente, L., Z. Su, J. Wen. (2012). Validation of SMOS Soil Moisture Products over the Maqu and Twente Regions. Sensors, Vol. 12, pp. 9965-9986. DOI: 10.3390/s120809965
- [17] Merlin, O., J.P. Walker, J.D. Kalma, E.J. Kim, J. Hacker, R. Panciera, R. Young, G. Summerell, J. Hornbuckle, M. Hafeez, T. Jackson. (2008). The NAFE'06 data set: Towards soil moisture retrieval at intermediate resolution. Advances in Water Resources. Vol. 31, No. 11, pp. 1444-1455. <https://doi.org/10.1016/j.advwatres.2008.01.018>.
- [18] Jackson, T. J., Bindlish, R., Cosh, M. H., Zhao, T., Starks, P. J., Bosch, D. D., Seyfried, M., Moran, M. S., Goodrich, D. C., Kerr, Y. H., & Leroux, D. (2012). Validation of Soil Moisture and Ocean Salinity (SMOS) Soil Moisture Over Watershed Networks in the U.S. IEEE Transactions on Geoscience and Remote Sensing, 50(5), 1530–1543. <https://doi.org/10.1109/tgrs.2011.2168533>
- [19] Tetlock E, Toth B, Berg A, Rowlandson T, Ambadan JT. (2019). An 11-year (2007–2017) Soil Moisture and Precipitation Dataset from the Kenaston Network in the Brightwater Creek Basin, Saskatchewan, Canada. Earth System Science Data, Vol. 11, No. 2, pp. 787-96. <https://doi.org/10.5194/essd-11-787-2019>
- [20] Bindlish, R., T.J. Jackson, A.J. Gasiewski, M. Klein, E.G. Njoku. (2006). Soil moisture mapping and AMSR-E validation using the PSR in SMEX02. Remote Sensing of Environment, Vol. 103, No. 2, pp. 127-139, <https://doi.org/10.1016/j.rse.2005.02.003>.
- [21] Bindlish, R., T.J. Jackson, A. Gasiewski, B. Stankov, M. Klein, M.H. Cosh, I. Mladenova, C. Watts, E. Vivoni, V. Lakshmi, J. Bolten, T. Keefer. (2008). Aircraft based soil moisture retrievals under mixed vegetation and topographic conditions. Remote Sensing of Environment, Vol. 112, No. 2, pp. 375-390, <https://doi.org/10.1016/j.rse.2007.01.024>.
- [22] Jackson, T. J., R. Bindlish, A.J. Gasiewski, B. Stankov, M. Klein, E.G. Njoku, D. Bosch, T.L. Coleman, C.A. Laymon, P. Starks. (2005). Polarimetric scanning radiometer C- and X-band microwave observations during SMEX03. IEEE Trans. Geosci. Remote Sensing, Vol. 43, No. 11, pp. 2418-2430, doi: 10.1109/TGRS.2005.857625.
- [23] Delwart, S., Bouzinac, C., Wursteisen, P., Berger, M., Drinkwater, M., Martin-Neira, M., & Kerr, Y. H. (2008). SMOS Validation and the COSMOS Campaigns. IEEE Transactions on Geoscience and Remote Sensing, 46(3), 695–704. <https://doi.org/10.1109/tgrs.2007.914811>
- [24] dall'Amico, J.T., F. Schlenz, A. Loew and W. Mauser. (2012). First Results of SMOS Soil Moisture Validation in the Upper Danube Catchment. IEEE Trans. Geosci. Remote Sensing, Vol. 50, No. 5, pp. 1507-1516, doi: 10.1109/TGRS.2011.2171496.
- [25] Al-Yaari, A., J.P. Wigneron, W. Dorigo, A. Colliander, T. Pellarin, S. Hahn, A. Mialon, P. Richaume, R. Fernandez-Moran, L. Fan, Y.H. Kerr, G. De Lannoy. (2019). Assessment and inter-comparison of recently developed/reprocessed microwave satellite soil moisture products using ISMN ground-based measurements. Remote Sensing of Environment, Vol. 224, pp. 289-303. doi: 10.1016/j.rse.2019.02.008.
- [26] Rotzer, K., C. Montzka, H. Bogena, W. Wagner, Y.H. Kerr, R. Kidd, H. Vereecken. (2014). Catchment scale validation of SMOS and ASCAT soil moisture products using hydrological modeling and temporal stability analysis. J. Hydrology, Vol 519, Part A, pp. 934-946, <https://doi.org/10.1016/j.jhydrol.2014.07.065>.
- [27] Bircher, S., N. Skou and Y. H. Kerr. (2013). Validation of SMOS LIC and L2 Products and Important Parameters of the Retrieval Algorithm in the Skjern River Catchment, Western Denmark. IEEE Trans. Geosci. Remote Sensing, Vol. 51, No. 5, pp. 2969-2985, doi: 10.1109/TGRS.2012.2215041.
- [28] Gherboudj, I., R. Magagi, K. Goita, A. A. Berg, B. Toth and A. Walker. (2012). Validation of SMOS Data Over Agricultural and Boreal Forest Areas in Canada. IEEE Trans. Geosci. Remote Sensing, vol. 50, no. 5, pp. 1623-1635. doi: 10.1109/TGRS.2012.2188532.
- [29] Sanchez, N., J. Martinez-Fernandez, A. Scaini and C. Perez-Gutierrez. (2012). Validation of the SMOS L2 Soil Moisture Data in the REMEDHUS Network (Spain). IEEE Trans. Geosci. Remote Sensing, Vol. 50, No. 5, pp. 1602-1611, doi: 10.1109/TGRS.2012.2186971.
- [30] Robock, A., Vinnikov, K. Y., Srinivasan, G., Entin, J. K., Hollinger, S. E., Speranskaya, N. A., Liu, S., & Namkhai, A. (2000). The Global Soil Moisture Data Bank. Bulletin of the American Meteorological Society, 81(6), 1281–1299. [https://doi.org/10.1175/1520-0477\(2000\)081<1281:tgsmdb>2.3.co;2](https://doi.org/10.1175/1520-0477(2000)081<1281:tgsmdb>2.3.co;2)
- [31] Dorigo, W. A., Wagner, W., Hohensinn, R., Hahn, S., Paulik, C., Xaver, A., Gruber, A., Drusch, M., Mecklenburg, S., van Oevelen, P., Robock, A., & Jackson, T. (2011). The International Soil Moisture Network: a data hosting facility for global in situ soil moisture measurements. Hydrology and Earth System Sciences, 15(5), 1675–1698. <https://doi.org/10.5194/hess-15-1675-2011>
- [32] Das, N.N., D. Entekhabi, S. Dunbar, S. Kim, S. Yueh, A. Colliander, T. J. Jackson, P. E. O'Neill, M. Cosh, T. Caldwell, J. Walker, A. Berg, T. Rowlandson, J. Martínez-Fernández, Á. González-Zamora, P. Starks, C. Holifield-Collins, J. Prueger, E. Lopez-Baeza. (2020). Assessment Report for the L2\_SM\_SP Version-3 Release Data Products, SMAP Project, JPL D-56549, Jet Propulsion Laboratory, Pasadena, CA. August 21, 2020.
- [33] O'Neill, P., S.Chan, R. Bindlish, M. Chaubell, A. Colliander, F. Chen, S. Dunbar, T. Jackson, J. Peng, M. Cosh, T.Bongiovanni, J. Walker, X. Wu, A. Berg, H. McNairn, M.Thibeault, J. Martínez-Fernández, Á. González-Zamora, E. Lopez-Baeza, K. Jensen, M. Seyfried, D. Bosch, P.

- Starks, C. Holifield Collins, J. Prueger, Z. Su, R. van der Velde, J. Asanuma, M. Palecki, E. Small, M. Zreda, J. Calvet, W. Crow, Y. Kerr, S. Yueh, and D. Entekhabi. (2020a). Calibration and Validation for the L2/3\_SM\_P Version 7 and L2/3\_SM\_P\_E Version 4 Data Products, SMAP Project, JPL D-56297, Jet Propulsion Laboratory, Pasadena, CA. August 31, 2020.
- [34] Gruber, A., G. De Lannoy, C. Albergel, A. Al-Yaari, L. Brocca, J.-C. Calvet, A. Colliander, M. Cosh, W. Crow, W. Dorigo, C. Draper, M. Hirschi, Y. Kerr, A. Konings, W. Lahoz, K. McColl, C. Montzka, J. Muñoz-Sabater, J. Peng, R. Reichle, P. Richaume, C. Ruiger, T. Scanlon, R. van der Schalie, J.-P. Wigneron, W. Wagner. (2020). Validation Practices for Satellite Soil Moisture Retrievals: What Are (the) Errors? *Remote Sens. Environ.*, Vol. 244. <https://doi.org/10.1016/j.rse.2020.111806>
- [35] Montzka, C., M. Cosh, B. Bayat, A. Al Bitar, A. Berg, R. Bindlish, H. R. Bogen, J. D. Bolten, F. Cabot, T. Caldwell, S. Chan, A. Colliander, W. Crow, N. Das, G. De Lannoy, W. Dorigo, S. R. Evett, A. Gruber, S. Hahn, T. Jagdhuber, S. Jones, Y. Kerr, S. Kim, C. Koyama, M. Kurum, E. Lopez-Baeza, F. Mattia, K. McColl, S. Mecklenburg, B. Mohanty, P. O'Neill, D. Or, T. Pellarin, G. P. Petropoulos, M. Piles, R. H. Reichle, N. Rodriguez-Fernandez, C. Rüdiger, T. Scanlon, R. C. Schwartz, D. Spengler, P. Srivastava, S. Suman, R. van der Schalie, W. Wagner, U. Wegmüller, J.-P. Wigneron, F. Camacho, and J. Nickeson (2020): Soil Moisture Product Validation Good Practices Protocol Version 1.0. In: C. Montzka, M. Cosh, J. Nickeson, F. Camacho (Eds.): *Good Practices for Satellite Derived Land Product Validation* (p. 123), Land Product Validation Subgroup (WGCV/CEOS), doi:10.5067/doc/ceoswgcv/lpv/sm.001
- [36] Chan, S.K., R. Bindlish, P.E. O'Neill, E.G. Njoku, T.J. Jackson, A. Colliander, et al. (2016). Assessment of the SMAP Passive Soil Moisture Product. *IEEE Trans. Geosci. Rem. Sens.*, Vol. 54, No. 8.
- [37] Kim, S.B., J. J. van Zyl, J. T. Johnson, M. Moghaddam, L. Tsang, A. Colliander, R. S. Dunbar, T. J. Jackson, S. Jaruwatanadilok, R. West, A. A. Berg, T. G. Caldwell, D. C. Goodrich, S. Livingston, E. Lopez-Baeza, T. Rowlandson, M. Thibeault, J. P. Walker, D. Entekhabi, E. G. Njoku, P. O'Neill, and S. H. Yueh. "Surface Soil Moisture Retrieval using the L-band Synthetic Aperture Radar Onboard the Soil Moisture Active Passive (SMAP) Satellite and Evaluation at Core Validation Sites," *IEEE Trans. Geosci. Remote Sens.*, Vol. 55, No. 4, pp. 1897-1914, 2017. doi: 10.1109/tgrs.2016.2631126
- [38] Das, N.N., D. Entekhabi, R.S. Dunbar, A. Colliander, F. Chen, W. Crow, T.J. Jackson, A. Berg, D.D. Bosch, T. Caldwell, M.H. Cosh, C. Holifield Collins, E. Lopez-Baeza, M. Moghaddam, T. Rowlandson, P.J. Starks, M. Thibeault, J.P. Walker, X. Wu, P.E. O'Neill, S. Yueh, E.G. Njoku, "The SMAP Mission Combined Active-Passive Soil Moisture Product at 9 km and 3 km Spatial Resolutions," *Remote Sensing of Environment*, Vol. 211, pp. 204-217, 2018. <https://doi.org/10.1016/j.rse.2018.04.011>
- [39] Reichle, R.H., Reichle, G. J. M. De Lannoy, Q. Liu, J. V. Ardizzone, A. Colliander, A. Conaty, W. Crow, T. J. Jackson, L. A. Jones, J. S. Kimball, R. D. Koster, S. P. Mahanama, E. B. Smith, A. Berg, S. Bircher, D. Bosch, T. G. Caldwell, M. Cosh, Á. González-Zamora, C. D. Holifield Collins, K. H. Jensen, S. Livingston, E. Lopez-Baeza, J. Martínez-Fernández, H. McNairn, M. Moghaddam, A. Pacheco, T. Pellarin, J. Prueger, T. Rowlandson, M. Seyfried, P. Starks, Z. Su, M. Thibeault, R. van der Velde, J. Walker, X. Wu, and Y. Zeng (2017a) "Assessment of the SMAP Level-4 Surface and Root-Zone Soil Moisture Product Using In Situ Measurements", *J. Hydromet.*, Vol. 18, pp. 2621-2645, 2017. <https://doi.org/10.1175/JHM-D-17-0063.1>
- [40] Brodzik, M. J., B. Billingsley, T. Haran, B. Raup, M. H. Savoie. 2012. EASE-Grid 2.0: Incremental but Significant Improvements for Earth-Gridded Data Sets. *ISPRS International Journal of Geo-Information*, 1(1):32-45, doi:10.3390/ijgi1010032.
- [41] Brodzik, M. J., B. Billingsley, T. Haran, B. Raup, M. H. Savoie. 2014. Correction: Brodzik, M. J. et al. EASE-Grid 2.0: Incremental but Significant Improvements for Earth-Gridded Data Sets. *ISPRS International Journal of Geo-Information* 2012, 1, 32-45. *ISPRS International Journal of Geo-Information*, 3(3):1154-1156, doi:10.3390/ijgi3031154.
- [42] Piepmeier, J. R., Johnson, J. T., Mohammed, P. N., Bradley, D., Ruf, C., Aksoy, M., Garcia, R., Hudson, D., Miles, L., & Wong, M. (2014). Radio-Frequency Interference Mitigation for the Soil Moisture Active Passive Microwave Radiometer. *IEEE Transactions on Geoscience and Remote Sensing*, 52(1), 761–775. <https://doi.org/10.1109/tgrs.2013.2281266>
- [43] Piepmeier, J. R., Focardi, P., Horgan, K. A., Knuble, J., Ehsan, N., Lucey, J., Brambora, C., Brown, P. R., Hoffman, P. J., French, R. T., Mikhaylov, R. L., Kwack, E.-Y., Slimko, E. M., Dawson, D. E., Hudson, D., Peng, J., Mohammed, P. N., De Amici, G., Freedman, A. P., ... Njoku, E. G. (2017). SMAP L-Band Microwave Radiometer: Instrument Design and First Year on Orbit. *IEEE Transactions on Geoscience and Remote Sensing*, 55(4), 1954–1966. <https://doi.org/10.1109/tgrs.2016.2631978>
- [44] Mohammed, P. N., Aksoy, M., Piepmeier, J. R., Johnson, J. T., & Bringer, A. (2016). SMAP L-Band Microwave Radiometer: RFI Mitigation Prelaunch Analysis and First Year On-Orbit Observations. *IEEE Transactions on Geoscience and Remote Sensing*, 54(10), 6035–6047. <https://doi.org/10.1109/tgrs.2016.2580459>
- [45] Chan, S., E. G. Njoku, A. Colliander. (2014). Algorithm Theoretical Basis Document (ATBD): Level 1C Radiometer Data Product. SMAP Project, Rev. A, Dec. 9, 2014.
- [46] Chaubell, M.J., S. Yueh, J. Peng, R.S. Dunbar, S. Chan, J. Piepmeier, R. Bindlish, D. Entekhabi, P. O'Neill. (2018). Algorithm Theoretical Basis Document (ATBD): SMAP Level 1(B/C) Enhanced Radiometer Brightness Temperature Data Product. SMAP Project, Rev. B, May 31, 2018.
- [47] Chan, S.K., R. Bindlish, P. O'Neill, T. Jackson, E. Njoku, S. Dunbar, J. Chaubell, J. Piepmeier, S. Yueh, D. Entekhabi, A. Colliander, F. Chen, M.H. Cosh, T. Caldwell, J. Walker, A. Berg, H. McNairn, M. Thibeault, J. Martínez-Fernández, F. Uldall, M. Seyfried, D. Bosch, P. Starks, C. Holifield Collins, J. Prueger, R. van der Velde, J. Asanuma, M. Palecki, E.E. Small, M. Zreda, J. Calvet, W.T. Crow, Y. Kerr "Development and Assessment of the SMAP Enhanced Passive Soil Moisture Product," *Remote Sensing of Environment*, Vol. 204, pp. 931-941, 2018. doi: 10.1016/j.rse.2017.08.025
- [48] Das, N.N., D. Entekhabi, R.S. Dunbar, M. J. Chaubell, A. Colliander, S. Yueh, T. Jagdhuber, F. Chen, W. Crow, P.E. O'Neill, A. Berg, D. D. Bosch, T. Caldwell, M.H. Cosh, C. Holifield Collins, E. Lopez-Baeza, M. Thibeault, J.P. Walker. (2019). The SMAP and Copernicus Sentinel 1A/B Microwave Active-Passive High Resolution Surface Soil Moisture Product. *Remote Sensing of Environment*, Vol. 233. <https://doi.org/10.1016/j.rse.2019.111380>
- [49] O'Neill, P., S. Chan, E. G. Njoku, T. Jackson, R. Bindlish. (2020b). Algorithm Theoretical Basis Document (ATBD): L2 & L3 Radiometer Soil Moisture (Passive) Data Products. SMAP Project, Rev. F, August 31, 2020.
- [50] Chaubell, M. J., Yueh, S. H., Dunbar, R. S., Colliander, A., Chen, F., Chan, S. K., Entekhabi, D., Bindlish, R., O'Neill, P. E., Asanuma, J., Berg, A. A., Bosch, D. D., Caldwell, T., Cosh, M. H., Holifield Collins, C., Martínez-Fernández, J., Seyfried, M., Starks, P. J., Su, Z., ... Walker, J. (2020). Improved SMAP Dual-Channel Algorithm for the Retrieval of Soil Moisture. *IEEE Transactions on Geoscience and Remote Sensing*, 58(6), 3894–3905. <https://doi.org/10.1109/tgrs.2019.2959239>
- [51] Reichle, R., Q. Liu, R.D. Koster, W. Crow, G.J.M. De Lannoy, J.S. Kimball, J.V. Ardizzone, D. Bosch, A. Colliander, M.H. Cosh, J. Kolassa, S.P. Mahanama, J. Prueger, P. Starks, J.P. Walker. (2019). Version 4 of the SMAP Level-4 Soil Moisture Algorithm and Data Product. *J. Adv. Modeling Earth Systems*, Vol. 11, No. 10, pp. 3106-3130. <https://doi.org/10.1029/2019MS001729>
- [52] Colliander, A., Cosh, M. H., Kelly, V. R., Kraatz, S., Bourgeau-Chavez, L., Siqueira, P., A. Roy, A.G. Konings, N. Holtzman, S. Misra, D. Entekhabi, P. O'Neill, S.H. Yueh. (2020). SMAP Detects Soil Moisture under Temperate Forest Canopies. *Geophysical Research Letters*. Vol. 47. <https://doi.org/10.1029/2020GL089697>
- [53] Ayres, E., A. Colliander, M. Cosh, R. Joshua, S. Simkin, M. Genazzio. (2021). Validation of SMAP Soil Moisture at Terrestrial National Ecological Observatory Network (NEON) Sites Show Potential for Soil Moisture Retrieval in Forested Areas. *IEEE J. Sel. Topics in Applied Earth Observations and Remote Sensing*. doi: 10.1109/JSTARS.2021.3121206.
- [54] Colliander, A., J.T. Jackson, R. Bindlish, S. Chan, S.B. Kim, M.H. Cosh, R.S. Dunbar, L. Dang, L. Pashaian, J. Asanuma, K. Aida, A. Berg, T. Rowlandson, D. Bosch, T. Caldwell, K. Caylor, D. Goodrich, H. al Jassar, E. Lopez-Baeza, J. Martínez-Fernández, A. González-Zamora, S. Livingston, H. McNairn, A. Pacheco, M. Moghaddam, C. Montzka, C. Notarnicola, G. Niedrist, T. Pellarin, J. Prueger, J. Pulliainen, K. Rautiainen, J. Ramos, M. Seyfried, P. Starks, Z. Su, Y. Zeng, R. van der Velde, M. Thibeault, W. Dorigo, M. Vreugdenhil, J.P. Walker, X. Wu, A. Monerris, P.E. O'Neill, D. Entekhabi, E.G. Njoku, S. Yueh. (2017a). Validation of SMAP surface soil moisture products with core validation sites. *Rem. Sens. Env.*, Vol. 191, pp. 215-231. <https://doi.org/10.1016/j.rse.2017.01.021>

- [55] Entekhabi, D., R. H. Reichle, R. D. Koster, W. T. Crow. (2010). Performance Metrics for Soil Moisture Retrievals and Application Requirements,” *J. Hydrometeorol.*, Vol. 11, pp. 832-840. <https://doi.org/10.1175/2010JHM1223.1>
- [56] SMAP Science Definition Team, SMAP Algorithm Development Team. (2012). Skill Metrics for Validation of SMAP Data Products. D. Entekhabi, E.G. Njoku. (ed.). SMAP Project, Oct. 31, 2012.
- [57] Chen, F., W.T. Crow, A. Colliander, et al., Application of Triple Collocation in Ground-Based Validation of Soil Moisture Active/Passive (SMAP) Level 2 Data Products, *IEEE J. Sel. Topics App. Earth Obs. Rem., Sens.*, Vol. 10, No. 2, 2017. doi:10.1109/JSTARS.2016.2569998
- [58] Chen, F., W.T. Crow, R. Bindlish, A. Colliander, M.S. Burgin, J. Asanuma, K. Aida, “Global-Scale Evaluation of SMAP, SMOS and ASCAT Soil Moisture Products using Triple Collocation,” *Remote Sensing of Environment*, Vol. 214, pp. 1-13, 2018. <https://doi.org/10.1016/j.rse.2018.05.008>
- [59] Reichle, R. H., Q. Liu, J. V. Ardizzone, W. T. Crow, G. J. M. De Lannoy, J. Dong, J. S. Kimball, and R. D. Koster (2021), The Contributions of Gauge-Based Precipitation and SMAP Brightness Temperature Observations to the Skill of the SMAP Level-4 Soil Moisture Product, *Journal of Hydrometeorology*, 22, 405-424, doi:10.1175/JHM-D-20-0217.1.
- [60] Zwieback, S., A. Colliander, M. H. Cosh, J. Martinez-Fernandez, H. McNairn, P.J. Starks, M. Thibeault, A. Berg, “Estimating time-dependent vegetation biases in the SMAP soil moisture product,” *Hydrology and Earth System Sciences*, February 7, 2018.
- [61] Walker V.A., B.K. Hornbuckle, M.H. Cosh, J.H. Prueger. (2019). Seasonal Evaluation of SMAP Soil Moisture in the U.S. Corn Belt. *Remote Sensing*, Vol. 11, No. 21. DOI: 10.3390/rs11212488
- [62] Colliander, A., T.J. Jackson, S.K. Chan, P. O’Neill, R. Bindlish, M.H. Cosh, T. Caldwell, J.P. Walker, A. Berg, H. McNairn, M. Thibeault, J. Martinez-Fernandez, K.H. Jensen, J. Asanuma, M.S. Seyfried, D.D. Bosch, P.j. Starks, C. Holifield Collins, J.H. Pruger, Z. Su, S.H. Yueh. (2019a). Seasonal Dependence of SMAP Radiometer-Based Soil Moisture Performance as Observed Over Core Validation Sites. *IGARSS 2019 - 2019 IEEE International Geoscience and Remote Sensing Symposium*, Yokohama, Japan, 2019, pp. 5320-5323, doi: 10.1109/IGARSS.2019.8899007.
- [63] Western, A.W., R.B. Grayson, G. Bloschl. (2002). Scaling of Soil Moisture: A Hydrologic Perspective. *Annu. Rev. Earth Planet. Sci.* Vol. 30, pp. 149–80. DOI: 10.1146/annurev.earth.30.091201.140434.
- [64] Rodriguez-Iturbe, I., G.K. Vogel, R. Rigon, D. Entekhabi, F. Castelli, A. Rinaldo. (1995). On the Spatial Organization of Soil Moisture Fields. *Geophys. Res. Lett.* Vol. 22, No. 22, pp. 2757-2760. <https://doi.org/10.1029/95GL02779>
- [65] Famiglietti, J.S, J.W. Rudnicki, M. Rodell. (1998). Variability in Surface Moisture Content Along a Hillslope Transect: Rattlesnake Hill, Texas. *J. Hydrology*, Vol. 210, pp. 259-281. [https://doi.org/10.1016/S0022-1694\(98\)00187-5](https://doi.org/10.1016/S0022-1694(98)00187-5)
- [66] Famiglietti, J.S, J.A. Devereaux, C.A. Laymon, T. Tsegaye, P.R. Houser, T.J. Jackson, S.T. Graham, M. Rodell, P.J. van Oevelen. (1999). Ground-based Investigation of Soil Moisture Variability within Remote Sensing Footprints during the Southern Great Plains 1997 (SGP97) Hydrology Experiment. *Water Resources Research*, Vol. 35, No. 6, pp. 1839-1851. <https://doi.org/10.1029/1999WR900047>
- [67] Famiglietti, J.S., D. Ryu, A. A. Berg, M. Rodell, T. J. Jackson. (2008). Field Observations of Soil Moisture Variability across Scales,” *Water Resources Research*, Vol. 44, W01423. doi:10.1029/2006WR00580
- [68] Crow, W.T., E.F. Wood. (1999). Multi-scale Dynamics of Soil Moisture Variability Observed during SGP’97. *Geophysical Research Letter*, Vol. 26. No. 23, pp. 3485-3488, 1999. <https://doi.org/10.1029/1999GL010880>
- [69] Yee, M. S., Walker, J. P., Monerris, A., Rüdiger, C., & Jackson, T. J. (2016). On the identification of representative in situ soil moisture monitoring stations for the validation of SMAP soil moisture products in Australia. *Journal of Hydrology*, 537, 367–381. <https://doi.org/10.1016/j.jhydrol.2016.03.060>
- [70] Caldwell, T. G., T. Bongiovanni, M.H. Cosh, T.J. Jackson, A. Colliander, C.J. Abolt, R. Casteel, T. Larson, B.R. Scanlon, M.H. Young. (2019). The Texas Soil Observation Network: A comprehensive soil moisture dataset for remote sensing and land surface model validation. *Vadose Zone J.* Accepted Paper. <https://doi.org/10.2136/vzj2019.04.0034>
- [71] Montzka, C., H. R. Bogaen, M. Herbst, M. H. Cosh, T. Jagdhuber, and H. Vereecken. (2021). Estimating the number of reference sites necessary for the validation of global soil moisture products. *IEEE Geoscience and Remote Sensing Letters*. In Press. DOI:10.1109/LGRS.2020.3005730.
- [72] Qin, J., et al., Spatial upscaling of in-situ soil moisture measurements based on MODIS-derived apparent thermal inertia. *Remote Sensing of Environment*, 2013. 138: p. 1-9.
- [73] Kang, J., R. Jin, and X. Li, Regression Kriging-Based Upscaling of Soil Moisture Measurements From a Wireless Sensor Network and Multiresource Remote Sensing Information Over Heterogeneous Cropland. *IEEE Geoscience and Remote Sensing Letters*, 2015. 12(1): p. 92-96.
- [74] Kang, J., et al., High spatio-temporal resolution mapping of soil moisture by integrating wireless sensor network observations and MODIS apparent thermal inertia in the Babao River Basin, China. *Remote Sensing of Environment*, 2017. 191(Supplement C): p. 232-245.
- [75] Wang, J., et al., Upscaling In Situ Soil Moisture Observations To Pixel Averages With Spatio-Temporal Geostatistics. *remote sensing*, 2015. 7(9): p. 11372-11388.
- [76] Ma CF, et al. Multi-scale validation of SMAP soil moisture products over cold and arid regions in northwestern China using distributed ground observation data. *Remote Sensing*, 2017, 9(4)327, 10.3390/rs9040327.
- [77] Voronoi, Georgy. (1908). Nouvelles applications des paramètres continus à la théorie des formes quadratiques. *Journal für die Reine und Angewandte Mathematik*. Vol. 134, No. 4, pp. 198–287.
- [78] Dingman, S.L. (2015). *Physical Hydrology*. Waveland Press, Inc., Illinois, USA, 2015.
- [79] Bhuiyan, H.A., McNairn, H., Powers, J., Friesen, M., Pacheco, A., Jackson, T.J., Cosh, M.H., Colliander, A., Berg, A., Rowlandson, T., Bullock, P. and Magagi, R. (2018). Assessing SMAP Soil Moisture Scaling and Retrieval in the Carman (Canada) Study Site. *Vadose Zone Journal*, 17: 1-14 180132. doi: 10.2136/vzj2018.07.0132
- [80] van der Velde, R., Colliander, A., Peziz, M., Benninga, H.-J. F., Bindlish, R., Chan, S. K., Jackson, T. J., Hendriks, D. M. D., Augustijn, D. C. M., and Su, Z. (2021). Validation of SMAP L2 passive-only soil moisture products using upscaled in situ measurements collected in Twente, the Netherlands, *Hydrol. Earth Syst. Sci.*, 25, 473–495, doi: 10.5194/hess-25-473-2021, 2021.
- [81] Crow, W.T., A.A. Berg, M.H. Cosh, A. Loew, B.P. Mohanty, R. Panciera, P. de Rosnay, D. Ryu, J. P. Walker. (2012). Upscaling Sparse Ground-Based Soil Moisture Observations for the Validation of Coarse-Resolution Satellite Soil Moisture Products,” *Reviews of Geophysics*, Vol. 50, No. RG2002. doi: 8755-1209/12/2011RG000372
- [82] Chen, F., W.T. Crow, M.H. Cosh, A. Colliander, J. Asanuma, A. Berg, D.D. Bosch, T.G. Caldwell, C. Holifield Collins, K. Høgh Jensen, J. Martínez-Fernández, H. McNairn, P.J. Starks, Z. Su, and J.P. Walker. (2019). Uncertainty of Reference Pixel Soil Moisture Averages Sampled at SMAP Core Validation Sites. *J. Hydrometeorology*, Vol. 20, pp. 1553-1568. <https://doi.org/10.1175/JHM-D-19-0049.1>
- [83] Vachaud, G., Passerat De Silans, A., Balabanis, P., & Vauclin, M. (1985). Temporal Stability of Spatially Measured Soil Water Probability Density Function. *Soil Science Society of America Journal*, Vol. 49, pp. 822–828. <https://doi.org/10.2136/sssaj1985.03615995004900040006x>
- [84] Gómez-Plaza, A., Alvarez-Rogel, J., Albaladejo, J. and Castillo, V.M. (2000). Spatial patterns and temporal stability of soil moisture across a range of scales in a semi-arid environment. *Hydrol. Process.*, 14: 1261-1277.
- [85] Cosh, M.H., T.J. Jackson, R. Bindlish, J.H. Prueger. (2004). Watershed Scale Temporal and Spatial Stability of Soil Moisture and its Role in Validating Satellite Estimates. *Remote Sensing of Environment*, Vol. 92, No. 4, pp. 427–435, <https://doi.org/10.1016/j.rse.2004.02.016>.
- [86] Michael H. Cosh,\* Patrick J. Starks, Jorge A. Guzman, and Daniel N. Moriasi. (2014). Upper Washita River Experimental Watersheds: Multiyear Stability of Soil Water Content Profiles. *J. Environ. Qual.* 43:1328–1333 (2014). doi:10.2134/jeq2013.08.0318
- [87] Miralles, D.G., W.T. Crow, M.H. Cosh. (2010). Estimating Spatial Sampling Errors in Coarse-Scale Soil Moisture Estimates Derived from Point-Scale Observations, *Journal of Hydrometeorology*, 11(6), 1423-1429. doi:10.1175/2010JHM1285.1
- [88] Dong, J., Crow, W.T., Tobin, K.J., Cosh, M.H., Bosch, D.D., Starks, P.J., Seyfried, M. and Holifield-Collins, C. Comparison of microwave remote sensing and land surface modeling for surface soil moisture climatology estimation. *Remote Sensing of Environment*. 242. 111756. 10.1016/j.rse.2020.111756. 2020.
- [89] Njoku, E. G., J-A. Kong. (1977). Theory for Passive Microwave Remote Sensing of Near-Surface Soil Moisture. *J. Geophys. Res.*, Vol. 82, No. 20, pp. 3108-3118.
- [90] Escorihuela, M. J., Chanzy, A., Wigneron, J. P., & Kerr, Y. H. (2010). Effective soil moisture sampling depth of L-band radiometry: A case



- study. *Remote Sensing of Environment*, 114(5), 995–1001. <https://doi.org/10.1016/j.rse.2009.12.011>
- [91] Lv, S., Zeng, Y., Wen, J., Zhao, H. & Su, Z. 2018, Estimation of Penetration Depth from Soil Effective Temperature in Microwave Radiometry, *Remote sensing*, 10, 4, p. 519
- [92] Shen, X., Walker, J. P., Ye, N., Wu, X., Boopathi, N., Yeo, I.-Y., Zhang, L., & Zhu, L. (2020). Soil Moisture Retrieval Depth of P- and L-Band Radiometry: Predictions and Observations. *IEEE Transactions on Geoscience and Remote Sensing*, 1–9. <https://doi.org/10.1109/tgrs.2020.3026384>
- [93] Shellito, P.J., E.E. Small, A. Colliander, R. Bindlish, M.H. Cosh, A.A. Berg, D.D. Bosch, T.G. Caldwell, D.C. Goodrich, H. McNairn, J.H. Prueger, P.J. Starks, R. van der Velde, J.P. Walker, “SMAP Soil Moisture Drying More Rapid Than Observed In Situ Following Rainfall Events,” *Geophys. Res. Lett.*, Vol. 43, pp. 8068-8075, 2016. doi: 10.1002/2016GL069946
- [94] Berg, A., J. Thomas-Ambadan, A. Colliander, H. McNairn, J. Powers, E. Tetlock. (2020) The Impact of In-Situ Probe Orientation on SMAP Validation Statistics. *IEEE Geosci. Remote Sens. Lett.*, In Press.
- [95] Caldwell, T.G., T. Bongiovanni, M.H. Cosh, C. Halley, and M.H. Young. 2018. Field and laboratory evaluation of the CS655 soil water content sensor. *Vadose Zone J.* 17:170214. doi:10.2136/vzj2017.12.0214
- [96] Adams, J. R., McNairn, H., Berg, A. A., & Champagne, C. (2015). Evaluation of near-surface soil moisture data from an AAFC monitoring network in Manitoba, Canada: Implications for L-band satellite validation. *Journal of Hydrology*, 521, 582–592. <https://doi.org/10.1016/j.jhydrol.2014.10.024>
- [97] Jensen, K. H., & Refsgaard, J. C. (2018). HOBE: The Danish Hydrological Observatory. *Vadose Zone Journal*, 17(1), 0. <https://doi.org/10.2136/vzj2018.03.0059>
- [98] Whitcomb, J., Clewley, D., Colliander, A., Cosh, M. H., Powers, J., Friesen, M., McNairn, H., Berg, A. A., Bosch, D. D., Coffin, A., Collins, C. H., Prueger, J. H., Entekhabi, D., & Moghaddam, M. “Evaluation of SMAP Core Validation Site Representativeness Errors Using Dense Networks of In Situ Sensors and Random Forests,” *IEEE J. Sel. Top. Appl. Earth Observations Remote Sensing*, vol. 13, pp. 6457–6472, 2020, doi: 10.1109/jstars.2020.3033591.
- [99] Panciera, R., Walker, J. P., Jackson, T. J., Gray, D. A., Tanase, M. A., Ryu, D., Moneris, A., Yardley, H., Rudiger, C., Wu, X., Gao, Y., & Hacker, J. M. (2014). The Soil Moisture Active Passive Experiments (SMAPEx): Toward Soil Moisture Retrieval From the SMAP Mission. *IEEE Transactions on Geoscience and Remote Sensing*, 52(1), 490–507. <https://doi.org/10.1109/tgrs.2013.2241774>
- [100] Ye, N., J.P. Walker, R. Bindlish, J. Chaubell, N.N. Das, A.I. Gevaert, T.J. Jackson, C. Rudiger. (2019). Evaluation of SMAP downscaled brightness temperature using SMAPEx-4/5 airborne observations. *Remote Sensing of Environment*, Vol. 221, pp. 363-372, doi: 10.1016/j.rse.2018.11.033.
- [101] Galle S., Grippa M., Peugeot C., Bouzou Moussa I., Cappelaere B., Demarty J., Mougou E., Panthou G., Adjomayi P., Agbossou E.K., Ba A., Boucher M., Cohard J-M., Desclotres M., Descroix L., Diawara M., Dossou M., Favreau G., Gangneron F., Gosset M., Hector B., Hiernaux P., Issoufou B-A., Kergoat L., Lawin E., Lebel T., Legchenko A., Malam Abdou M., Malam-Issa O., Mamadou O., Nazoumou Y., Pellarin T., Quantin G., Sambou B., Seghier J., Séguis L., Vandervaere J-P., Vischel T., Vouillamoz J-M., Zannou A., Afouda S., Alhassane A., Arjounin M., Barral H., Biron R., Cazenave F., Chaffard V., Chazarin J-P., Guyard H., Koné A., Mainassara I., Mamane A., Oi M., Ouani T., Soumaguel N., Wubda M., Ago E.E., Alle I. C., Allies A., Arpin-Pont F., Awessou B., Cassé C., Charvet G., Dardel C., Depeyre A., Diallo F.B., Do T., Fatras C., Frappart F., Gal L., Gascon T., Gibon F., Guiro I., Ingatan A., Kempf J., Kotchoni D.O.V., Lawson F.M.A., Leauthaud C., Louvet S., Mason E., Nguyen C. C., Perrimon B, Pierre C., Richard A., Robert E., Román-Cascón, C., Velluet C., Wilcox C, AMMA-CATCH, a critical zone observatory in West Africa, monitoring a region in transition, *Vadose Zone Journal*, DOI : 10.2136/vzj2018.03.0062
- [102] Magagi R., A.A. Berg, K. Goita, S. Belair, T. Jackson, B. Toth, A. Walker, H. McNairn, P. O'Neill, M. Moghaddam, I. Gherboudj, A. Colliander, M. Cosh, J. Belanger\*, M. Burgin, J. Fisher, S. Kim, L-P. Rouseau, J. Djamai, J. Shang, A. Merzouki. 2013. CanEX-SM 10 (Canadian Experiment for Soil Moisture in 2010): Overview and Preliminary results. *IEEE Transactions in Remote Sensing and Geosciences* 51(1.2): doi:10.1109/TGRS.2012.2198920
- [103] McNairn, H., Jackson, T., Wiseman, G., Belair, S., Berg, A., Bullock, P., Colliander, A., Cosh, M., Kim, S., Magagi, R., Moghaddam, M., Adams, J., Homayouni, S., Ojo, E., Rowlandson, T., Shang, J., Goita, K., Hosseini, M., “The Soil Moisture Active Passive Validation Experiment 2012 (SMAPVEX12): Pre-Launch Calibration and Validation of the SMAP Satellite”, *IEEE Transactions on Geoscience and Remote Sensing*, Vol. 53, No. 5, May 2015. doi: 10.1109/TGRS.2014.2364913
- [104] Colliander, A., M.H. Cosh, S. Misra, T.J. Jackson, W.T. Crow, J. Powers, H. McNairn, P. Bullock, A. Berg, R. Magagi, Y. Gao, R. Bindlish, R. Williamson, I. Ramos, B. Latham, P. O’Neill, S. Yueh. (2019b). Comparison of high-resolution airborne soil moisture retrievals to SMAP soil moisture during the SMAP validation experiment 2016 (SMAPVEX16). *Remote Sensing of Environment*, Vol. 227, pp. 137-150. <https://doi.org/10.1016/j.rse.2019.04.004>.
- [105] Rowlandson, T.L., A.A. Berg, A. Roy, E. Kim, R. Pardo Lara, J. Powers, K. Lewis, P. Hauser, K. McDonald, P. Toose, A. Wu, E. De Marco, C. Derksen, J. Entin, A. Colliander, X. Xu, A. Mavrovic, “Capturing Agricultural Soil Freeze/Thaw State Through Remote Sensing and Ground Observations: A Soil Freeze/Thaw Validation Campaign,” *Remote Sensing of Environment*, Vol 211, pp. 59-70, 2018. <https://doi.org/10.1016/j.rse.2018.04.003>
- [106] Wen, X., H. Lu, C. Li, T. Koike, I. Kaihotsu. (2014). Inter-Comparison of Soil Moisture Products from SMOS, AMSR-E, ECMWF and GLDAS over the Mongolia Plateau. *Proc. SPIE*, Vol. 9260.
- [107] Keefer, T. O., M. S. Moran, and G. B. Paige, 2008: Long-term meteorological and soil hydrology database, Walnut Gulch experimental watershed, Arizona, United States. *Water Resour. Res.*, 44, W05S07, <https://doi.org/10.1029/2006WR005702>.
- [108] Colliander, A., M.H. Cosh, S. Misra, T.J. Jackson, W.T. Crow, S. Chan, R. Bindlish, C. Chae, C. Holifield Collins, S.H. Yueh. (2017b). Validation and Scaling of Soil Moisture in a Semi-Arid Environment: SMAP Validation Experiment 2015 (SMAPVEX15). *Remote Sensing of Environment*, Vol. 196, pp. 101-112. <https://doi.org/10.1016/j.rse.2017.04.022>
- [109] Bosch, D. D., J. M. Sheridan, R. R. Lowrance, R. K. Hubbard, T. C. Strickland, G. W. Feyereisen, and D. G. Sullivan, 2007: Little River experimental watershed database. *Water Resour. Res.*, 43, W09472, <https://doi.org/10.1029/2006WR005844>.
- [110] Choi, M., Jacobs, J. M., & Bosch, D. D. (2008). Remote sensing observatory validation of surface soil moisture using Advanced Microwave Scanning Radiometer E, Common Land Model, and ground based data: Case study in SMEX03 Little River Region, Georgia, U.S. *Water Resources Research*, 44, W08421. <https://doi.org/10.1029/2006WR005578>
- [111] Seyfried, M. S., Lohse, K. A., Marks, D., Flerchinger, G. N., Pierson, F., Holbrook, S. (2018): Reynolds Creek Experimental Watershed and Critical Zone Observatory. *Vadose Zone Journal* 17:180129. DOI: 10.2136/vzj2018.07.0129
- [112] Han, E., Heathman, G. C., Merwade, V., & Cosh, M. H. (2012). Application of observation operators for field scale soil moisture averages and variances in agricultural landscapes. *Journal of Hydrology*, 444–445, 34–50.
- [113] Coopersmith, E., Cosh, M. H., Petersen, W. A., Prueger, J. H., & Niemeier, J. J. (2015). Soil moisture model calibration and validation: An ARS watershed on the South Fork Iowa River. *Journal of Hydrometeorology*, 16, 1087–1101.
- [114] Cosh, M.H., W.A. White, A. Colliander, T.J. Jackson, J.H. Prueger, B.K. Hornbuckle, E.R. Hunt, H. McNairn, J. Powers, V.A. Walker, P. Bullock. (2019). Estimating Vegetation Water Content During the Soil Moisture Active Passive Validation Experiment 2016. *J. Appl. Remote Sens.*, Vol. 13, No. 1. <https://doi.org/10.1117/1.JRS.13.014516>
- [115] Starks, P. J., J. L. Steiner, and A. J. Stern, 2014: Upper Washita River experimental watersheds: Land cover data sets (1974–2007) for two southwestern Oklahoma agricultural watersheds. *J. Environ. Qual.*, 43, 1310–1318, <https://doi.org/10.2134/jeq2013.07.0292>.
- [116] Blöschl, G., A.P. Blaschke, M. Broer, C. Bucher, G. Carr, X. Chen, A. Eder, et al., (2016). The Hydrological Open Air Laboratory (HOAL) in Petzenkirchen: a hypothesis-driven observatory. *Hydrology and Earth System Sciences* 20 (1), 227-255
- [117] Ikonen, J., J. Vehviläinen, K. Rautiainen, T. Smolander, J. Lemmetyinen, S. Bircher, J. Pulliainen. (2015). The Sodankylä in-situ Soil Moisture Observation Network: An Example Application to Earth Observation Data Product Evaluation,” *Geoscientific Instrumentation Methods and Data Systems Discussion*, Vol. 5, pp. 599-629.
- [118] Zacharias, S., H. Bogaen, L. Samaniego, M. Mauder, R. Fuss, T. Putz, et al. (2011). A Network of Terrestrial Environmental Observatories in Germany. *Vadose Zone Journal*, Vol. 10, pp. 955-973.



- [151] Zheng, X., Feng, Z., Xu, H., Sun, Y., Bai, Y., Li, B., Li, L., Zhao, X., Zhang, R., Jiang, T., Li, X., & Li, X. (2020). Performance of Four Passive Microwave Soil Moisture Products in Maize Cultivation Areas of Northeast China. *Ieee J-Stars*, 13, 2451-2460, doi:10.1109/JSTARS.2020.2995623.
- [152] Cui, C., J. Xu, J. Zeng, K. S. Chen, X. Bai, H. Lu, et al., "Soil moisture mapping from satellites: an intercomparison of SMAP, SMOS, FY3B, AMSR2, and ESA CCI over two dense network regions at different spatial scales," *Remote Sens.*, vol. 10, 2018, doi:10.3390/rs10010033.
- [153] Lv, S., Zeng, Y., Wen, J., & Su, Z. (2016). A reappraisal of global soil effective temperature schemes. *Remote sensing of environment*, 183, 144-153. doi: 10.1016/j.rse.2016.05.012
- [154] Colliander, A., Jackson, T. J., Berg, A., Bosch, D. D., Caldwell, T., Chan, S., Cosh, M. H., Collins, C. H., Martínez-Fernández, J., McNairn, H., Prueger, J. H., Starks, P. J., Walker, J. P., & Yueh, S. H. (2020). Effect of Rainfall Events on SMAP Radiometer-Based Soil Moisture Accuracy Using Core Validation Sites. *Journal of Hydrometeorology*, 21(2), 255-264. <https://doi.org/10.1175/JHM-D-19-0122.1>
- [155] Colliander, A., Z. Yang, R. Mueller, A. Sandborn, R. Reichle, W. Crow, D. Entekhabi, and S. Yueh. (2019c). Consistency between NASS Surveyed Soil Moisture Conditions and SMAP Soil Moisture Observations. *Water Resources Research*. Vol. 55, No. 9, pp. 7682-7693. doi:10.1029/2018WR024475
- [156] Jones, L.A., J.S. Kimball, R.H. Reichle, N. Madani, J. Glassy, J.V. Ardizzone, A. Colliander, J. Cleverly, A.R. Desai, D. Eamus, E.S. Euskirchen, L. Hutley, C. Macfarlane, R.L. Scott, "The SMAP Level 4 Carbon Product for Monitoring Ecosystem Land-Atmosphere CO2 Exchange," *IEEE Trans. Geosci. Remote Sens.*, Vol. 55, No. 11, 2017. <https://par.nsf.gov/servlets/purl/10085142>
- [157] Purdy, A.J., J.B. Fisher, M.L. Goulden, A. Colliander, G. Halverson, K. Tu, J.S. Famiglietti, "Soil Moisture Improves Global Evapotranspiration," *Remote Sens. Environ.*, Vol. 219, pp. 1-14, 2018. doi : 10.1016/j.rse.2018.09.023
- [158] Akbar, R., Short Gianotti, D. J., McColl, K. A., Haghighi, E., Salvucci, G. D., & Entekhabi, D. (2018). Estimation of Landscape Soil Water Losses from Satellite Observations of Soil Moisture, *Journal of Hydrometeorology*, 19(5), 871-889. doi: <https://doi.org/10.1175/JHM-D-17-0200.1>
- [159] Gianotti, D. J., Rigden, A. J., Salvucci, G. D., & Entekhabi, D. (2019). Satellite and station observations demonstrate water availability's effect on continental-scale evaporative and photosynthetic land surface dynamics. *Water Resources Research*, Vol. 55, pp. 540-554. doi: 10.1029/2018WR023726
- [160] Crow, W. T., Chen, F., Reichle, R. H., Xia, Y., & Liu, Q. (2018). Exploiting soil moisture, precipitation, and streamflow observations to evaluate soil moisture/runoff coupling in land surface models. *Geophysical Research Letters*, 45, 4869-4878. <https://doi.org/10.1029/2018GL077193>
- [161] Holtzman, N., L.D.L. Anderegg, S. Kraatz, A. Mavrovic, O. Sonnentag, C. Pappas, M.H. Cosh, A. Langlois, T. Lakhankar, D. Tesser, N. Steiner, A. Colliander, A. Roy, A.G. Konings. (2020). L-band vegetation optical depth as an indicator of plant water potential in a temperate deciduous forest stand. *Biogeosciences*. Under Review. <https://doi.org/10.5194/bg-2020-373>
- [162] Wrona, E., T.L. Rowlandson, M. Nambiar, A.A. Berg, A. Colliander, P. Marsh, "Validation of the Soil Moisture Active Passive (SMAP) Satellite Soil Moisture Retrieval in an Arctic Tundra Environment," *Geophys. Res. Lett.*, Vol. 44, pp. 4152-4158, 2017. <https://doi.org/10.1002/2017GL072946>



**Dr. Andreas Colliander** (S'04-A'06-M'07-SM'08) received the M.Sc. (Tech.), Lic.Sc. (Tech.), and D.Sc. (Tech.) degrees from Aalto University, Espoo, Finland, in 2002, 2005, and 2007, respectively.

He is currently a Research Scientist with the Jet Propulsion Laboratory, California Institute of Technology, Pasadena, CA.

His research is focused on development of microwave remote sensing techniques. He is currently leading the calibration and

validation of the geophysical retrievals of NASA's SMAP mission and developing multi-frequency retrievals for ice sheets and polar atmosphere.



**Dr. Rolf H. Reichle** received the M.S. degree ("Diplom") in physics from the University of Heidelberg, Heidelberg, Germany, in 1996, and the Ph.D. degree in environmental engineering from the Massachusetts Institute of Technology, Cambridge, MA, USA, in 2000.

He is currently a Research Physical Scientist with the Global Modeling and Assimilation Office, NASA Goddard Space Flight Center, Greenbelt, MD, USA. His research interests include land data assimilation, satellite-based remote sensing, and applications related to land-atmosphere interactions, weather prediction, and seasonal climate forecasting.



**Dr. Wade T. Crow** received his Ph.D. in 2001 from Princeton University.

He is currently a Research Physical Scientist at the USDA ARS Hydrology and Remote Sensing Laboratory in Beltsville, MD. His research focuses on the development of hydrologic and agricultural applications for remote sensing data and the implementation of appropriate data assimilation approaches

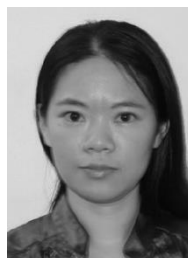
to facilitate this goal with a special emphasis on techniques that fuse information from various disparate remote sensing sources



**Dr. Michael H. Cosh** (M'02-SM'17) received the Ph.D. degree in civil and environmental engineering from Cornell University, Ithaca, NY, USA, in 2002.

He is currently a Research Hydrologist with the U.S. Department of Agriculture, Agricultural Research Service, Hydrology and Remote Sensing Laboratory,

Beltsville, MD, USA. His current research interests include the monitoring of soil moisture from both in situ resources and satellite products, and he conducts research on satellite calibration and validation for such missions as the Soil Moisture Active Passive and Soil Moisture Ocean Salinity Missions.



**Dr. Fan Chen** received her PhD degree in climatology from University of North Carolina, Chapel Hill, in 2006.

She is currently a visiting scientist at the Hydrology and Remote Sensing Laboratory, ARS, U.S. Department of Agriculture, Beltsville, Maryland. Her research involves validation methodology for satellite retrievals of geophysical

variables and application of data assimilation techniques to leverage satellite surface soil moisture products in hydrologic modelling.



**Dr. Steven Chan** (M'01-SM'03) received the Ph.D. degree in electrical engineering from the University of Washington.

He is currently a Research Scientist at Jet Propulsion Laboratory, California Institute of Technology. His work in remote sensing of soil moisture encompasses the NASA Aqua/AMSR-E instrument, the

JAXA GCOM-W/AMSR2 instrument, the ESA SMOS mission, the NASA SMAP mission, and more recently the NISAR mission.



**Prof. Narendra Narayan Das** received the B. Engineering degree from the National Institute of Technology, Raipur (formerly, Government Engineering College, Raipur), India, and the Master and the Ph.D. degrees from Texas A&M University, College Station, Texas, in 2005 and 2008, respectively.

He is currently an Associate Professor in the departments of Biosystems & Agricultural Engineering and Civil & Environmental Engineering at the Michigan State University (MSU).



**Dr. Rajat Bindlish** (SM-2005) received his B.S. in civil engineering from Indian Institute of Technology, Bombay in 1993, and the M.S. and Ph.D. in civil engineering from The Pennsylvania State University in 1996 and 2000 respectively.

He is currently with NASA Goddard Space Flight Center. His research interests involve the application of microwave remote sensing in hydrology.



**Dr. Julian Chaubell** received a Bachelor of Science in Mathematic degree from the University of Mar del Plata, Buenos Aires, Argentina, in 1997. He earned his Ph.D. in Applied and Computational Mathematics from the California Institute of Technology in 2004.

He is currently with Jet Propulsion Laboratory, California Institute of Technology, Pasadena, CA. His research interests include the forward modeling of radar and radiometer measurements as well as retrieval of the geophysical quantity from those measurements.

**Dr. Seung-bum Kim** received the B.Sc. degree from the Korea Advanced Institute of Science and Technology (KAIST) in 1992 and the M.S. (1993) and Ph.D. (1998) degrees from the University College London, England.

He is currently a Research Scientist with the Jet Propulsion Laboratory, California Institute of Technology. His current research includes microwave modeling, soil moisture retrieval with the radar.

**Dr. Qing Liu** received the Ph.D. degree in Atmospheric Science from the Georgia Institute of Technology, Atlanta, GA, USA, in 2004.

She currently works in the Global Modeling and Assimilation Office at NASA Goddard Space Flight Center, Greenbelt, MD, USA, on the development of land modeling and data assimilation systems.

**P. O'Neill**



**Dr. R. Scott Dunbar** received the B.S. in Physics and Astronomy from the University of Albany, New York, in 1976, and the Ph.D. degree in Physics from Princeton University in 1980.

He is currently with the Jet Propulsion Laboratory, California Institute of Technology, Pasadena CA. He has contributed to the development of science

algorithms for the NSCAT and SeaWinds ocean vector wind scatterometer projects, and since 2009 has worked on SMAP soil moisture and freeze-thaw algorithm development.

**L. Dang**



**Prof. John S. Kimball** received the Ph.D. degree in bioresource engineering from Oregon State University, Corvallis, OR, USA, in 1995, and the M.A. and B.A. degrees in Physical Geography from San Diego State University, CA, USA, in 1990 and 1987.

He is currently a Professor of Systems Ecology and Director of the Numerical Terradynamic Simulation Group (NTSG) at the University of Montana, Missoula, MT, USA.

**Thomas J. Jackson** (Fellow, IEEE) received the Ph.D. degree in civil engineering from the University of Maryland, College Park, MD, USA, in 1976.

He is Hydrologist and retired from the Hydrology and Remote Sensing Laboratory, United States Department of Agriculture, Agricultural Research Service, Beltsville, MD, USA in 2018.

**H.K. al Jassar**

**J. Asanuma**

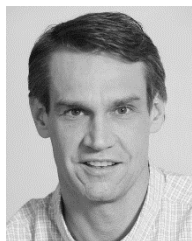


**Dr. Bimal K. Bhattacharya** received his PhD degree in 1995 and MSc degree in 1991, from Indian Agricultural Research Institute, New Delhi.

He is currently a scientist with Space Applications Centre (SAC), Indian Space Research Organization (ISRO), Ahmedabad, India since 2000. He is involved in developing satellite-based

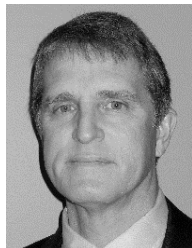
agro-met products and their utilization in National Agro-met Advisory Services in India. He is the science leader of AVIRIS-NG airborne hyperspectral mission in Indian and also the

science co-chair of ISRO-CNES (Indo-French) thermal infrared mission.



**Prof. Aaron A. Berg** received a Ph.D. degree in Earth System Science from the University of California at Irvine, Irvine, CA, USA, in 2003.

He is currently a Professor and Canada Research Chair in the department of Geography, Environment and Geomatics, University of Guelph, Guelph, ON, Canada. His research interests include remote sensing to support hydrological modeling.



**Dr. David D. Bosch** received a Ph.D. degree in hydrology from The University of Arizona, Tucson, AZ, USA, in 1990. In 1986, he joined the Agricultural Research Service.

He is currently a Research Hydrologist with the Southeast Watershed Research Laboratory, Agricultural Research Service, Tifton, Georgia, USA and he leads a Watershed Research Program. His primary research interests include watershed and landscape scale hydrology, agricultural impacts on water quality, and hydrologic and solute transport modeling of watershed processes.



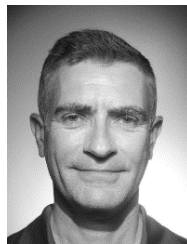
**Dr. Laura Bourgeau-Chavez** received a BS and MS from University of Michigan, School of Natural Resources and Environment as well as a PhD from University of New Brunswick, School of Forestry and Environmental Management. She is currently a Senior Research Scientist at Michigan Tech Research Institute and an Adjunct Assistant

Professor in the College of Forest Resources and Environmental Science (SFRES) of Michigan Technological University. Her main interests are in using passive and active microwave radar imaging for extracting moisture, inundation and biophysical information from wetland and upland landscapes.



**Dr. Todd Caldwell** received his B.S. in geosciences at the University of New Mexico, and his M.S. and Ph.D. in Hydrogeology from the University of Nevada, Reno.

He is currently a research hydrologist with the U.S. Geological Survey in the Nevada Water Science Center. His research focuses on in-situ soil moisture measurements and scaling, near-surface geophysics, and numerical modeling and parameter estimation of soil hydraulic properties.



**Dr. Jean-Christophe Calvet** received the M.Eng. degree in agronomy from AgroParisTech, France, in 1990, the M.Sc./Eng. degree in meteorology from the Ecole Nationale de la Météorologie, Toulouse, France, in 1990, the Ph.D. degree from the University of Toulouse in 1996, and the Habilitation in 2002.

He is currently with Météo-France, Toulouse, the French meteorological service, where he has been the Head of a land modeling and remote sensing team since 2003. His research interests include land-atmosphere exchange modeling and the use of remote sensing over land surfaces for meteorology.



**Chandra Holifield Collins** received a PhD in Soil Water and Environmental Science with a minor in Remote Sensing from the University of Arizona in 2006.

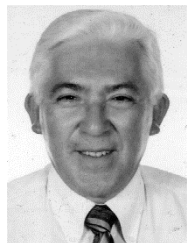
She is currently a Soil Scientist with the USDA-Agricultural Research Service's Southwest Watershed Research Center in Tucson, AZ. Her research interests include image analysis and the use of remote sensing data for agricultural applications, with current focus on operational tools for rangeland management.



**Prof. Karsten H. Jensen** received MSc and PhD degrees in hydrology from the Technical University of Denmark in 1977 and in 1983.

He is currently professor in hydrology at University of Copenhagen. He has been PI for a number of major research programs and is currently director of HOBE – the Danish Hydrological Observatory and project leader of two Danida Fellowship Centre (DFC) research projects in South Africa and India. His current research interest is integrated hydrological modelling at catchment scale under current and future climate conditions.

## S. Livingston



**Prof. Ernesto Lopez-Baeza** received the Doctorate Degree in Physics from the University of Valencia, Spain, in 1986.

He is currently an Associate Professor in Applied Physics with the Department of Earth Physics and Thermodynamics, University of Valencia, and Director of the Climatology from Satellites Group since 2000. He is responsible for the Valencia Anchor Station surface validation site in the framework of the current EO missions CERES, GERB, Sentinel-1, -2, -3, SMAP, SMOS, and preparing for EarthCARE



**Dr. José Martínez-Fernández** received the B.S. (Degree Award) and Ph.D. degrees in Physical Geography from the Universidad de Murcia (UM), in 1985 and 1992, respectively. In 1991 he received the M.S. degree in Water Science and Technology from the UM.

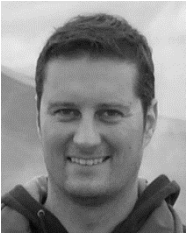
He is currently a Professor of Physical Geography in the Department of Geography of the Universidad de Salamanca (USAL), and the PI of the Water Resources Research Group at the Instituto Hispano Luso de Investigaciones Agrarias (CIALE), USAL.



**Dr. Heather McNairn** graduated with a Ph.D. in Geography from Université Laval (1999), a M.Sc. in Soil Science from the University of Guelph (1992) and a Bachelor of Environmental Studies in Geography from the University of Waterloo (1987).

She is a Senior Research Scientist with Agriculture and Agri-food Canada in Ottawa (Canada). She has 30 years of research experience in developing methods to monitor soils and crops using multi-spectral, hyperspectral and Synthetic Aperture Radar (SAR) sensors.

**M. Moghaddam**



**Dr. Carsten Montzka** (M'17) received the Ph.D. degree in Geography from the University of Bonn, Germany, in 2007.

He is currently with Institute of Bio- and Geosciences: Agrosphere (IBG-3) of the Forschungszentrum Jülich, Germany where he is focusing on hydrological remote sensing.



**Dr. Claudia Notarnicola** (M'09) received the M.S. degree in physics (summa cum laude) and the Ph.D. degree in physics from the University of Bari, Bari, Italy, in 1995 and 2002, respectively.

She is currently the Vice-Head of the Institute for Earth Observation at Eurac Research, Bolzano, Italy, and the Leader of Earth Observation for Environmental Monitoring Group. Her research interests include biophysical parameter (soil moisture, vegetation, and snow) retrieval using optical and SAR images, optical and SAR data processing, data fusion, and electromagnetic models.



**Dr. Thierry Pellarin** is a senior scientist (CNRS) at the Institute of Environmental Geosciences (IGE) in Grenoble. His main research interests include microwave remote sensing of soil moisture (particularly in the SMOS mission), field-to regional-scale hydro-geological simulations, rainfall estimates from soil

moisture and agricultural applications, and he is co-PI of soil

moisture measurements in the AMMA-CATCH Observatory in West Africa.



**Isabella Greimeister-Pfeil** received the B.Sc. and M.Sc. degrees in geodesy and geoinformation from TU Wien in 2013 and 2016, respectively.

She is currently working toward her Ph.D. degree in remote sensing with the Centre for Water Resource Systems and Department of Geodesy and Geoinformation (TU Wien), and recently joined the Environment Agency Austria as

radar remote sensing expert.

Her work focuses on the retrieval and validation of soil moisture and vegetation datasets from active microwave remote sensing observations as well as their application in land surface and drought monitoring projects.



**Prof. Jouni Pulliainen** received the M.Sc. and the D.Sc. in Technology degrees from the Helsinki University of Technology (TKK), Faculty of Electrical Engineering, in 1988 and 1994, respectively. From 2001 to 2006 he was a professor of Space Technology at TKK, specializing in remote sensing.

He is currently a research professor at the Finnish Meteorological Institute (FMI) and the Director of the FMI Space and Earth Observation Centre (FMI-SPACE).

**J. Ramos**

**M. Seyfried**

**P. Starks**

**Z. Su**

**R. van der Velde**

**Y. Zeng**

**M. Thibeault**



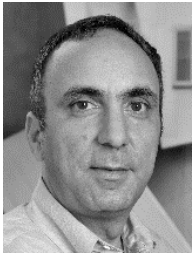
**Dr. Mariette Vreugdenhil** received her B.Sc. (2009) and M.Sc. (2011) in Earth Sciences at VUA Amsterdam. At TU Wien she obtained a PhD in remote sensing (2016) and has continued working there on soil moisture and vegetation monitoring with active microwave observations.



**Prof. Jeffrey Walker** received his B.E. (Civil) and B.Surveying degrees in 1995 with Hons 1 and University Medal from the University of Newcastle, Australia, and his Ph.D. in Water Resources Engineering from the same University in 1999.

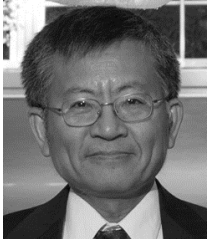
He is currently a Professor in the Department of Civil Engineering at Monash University. He is contributing to soil moisture satellite missions at NASA, ESA and JAXA, as a Science Team member for the SMAP mission and Cal/Val Team member for the SMOS and GCOM-W, respectively.

#### **M. Zribi**



**Prof. Dara Entekhabi** (M'04, SM'09, Fellow'15) received B.S. (1983) and M.S. degrees (1985, 1988) in geography from Clark University, Worcester, MA and Ph.D. degree (1990) in civil and environmental engineering from the Massachusetts Institute of Technology (MIT), Cambridge, MA.

He is currently a Professor with the Department of Civil and Environmental Engineering and the Department of Earth, Atmospheric and Planetary Sciences, MIT, and he is the Science Team lead for the SMAP mission. His research includes terrestrial remote sensing, data assimilation, and coupled land-atmosphere systems modeling.



**Dr. Simon H. Yueh** received the Ph.D. degree in Electrical Engineering in January 1991 from the Massachusetts Institute of Technology.

He is currently a Senior Research Scientist and SMAP Project Scientist with the Jet Propulsion Laboratory, California Institute of Technology, Pasadena, CA, and the Editor-in-Chief for the IEEE Trans. Geoscience and Remote Sensing.