

## RESEARCH ARTICLE SUMMARY

## OUTER SOLAR SYSTEM

## Color, composition, and thermal environment of Kuiper Belt object (486958) Arrokoth

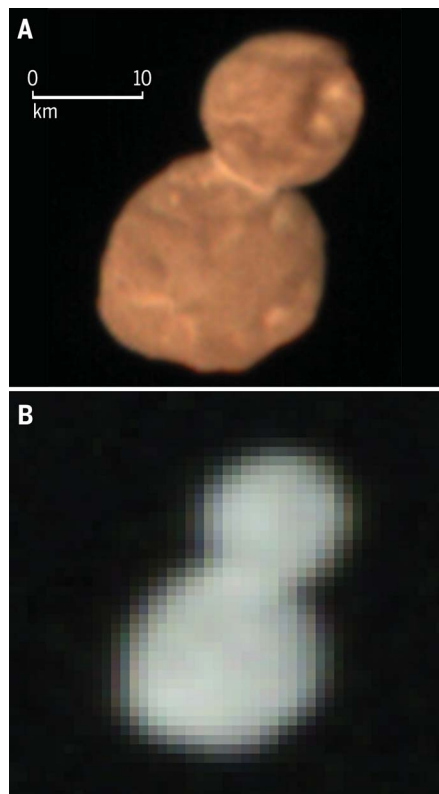
W. M. Grundy\*, M. K. Bird, D. T. Britt, J. C. Cook, D. P. Cruikshank, C. J. A. Howett, S. Krijt, I. R. Linscott, C. B. Olkin, A. H. Parker, S. Protopapa, M. Ruard, O. M. Umurhan, L. A. Young, C. M. Dalle Ore, J. J. Kavelaars, J. T. Keane, Y. J. Pendleton, S. B. Porter, F. Scipioni, J. R. Spencer, S. A. Stern, A. J. Verbiscer, H. A. Weaver, R. P. Binzel, M. W. Buie, B. J. Buratti, A. Cheng, A. M. Earle, H. A. Elliott, L. Gabasova, G. R. Gladstone, M. E. Hill, M. Horanyi, D. E. Jennings, A. W. Lunsford, D. J. McComas, W. B. McKinnon, R. L. McNutt Jr., J. M. Moore, J. W. Parker, E. Quirico, D. C. Reuter, P. M. Schenk, B. Schmitt, M. R. Showalter, K. N. Singer, G. E. Weigle II, A. M. Zangari

**INTRODUCTION:** The New Horizons spacecraft flew past (486958) Arrokoth (provisional designation 2014 MU<sub>69</sub>) on 1 January 2019. Arrokoth is a member of the subclass of trans-neptunian or Kuiper Belt objects (KBOs), known as the cold classical KBOs (CCKBOs). Most KBOs formed in a disk of planetesimals that extended to about 30 AU from the Sun. Neptune eventually disrupted that disk by migrating outward through it, with the migration halted by the sparseness of the disk beyond 30 AU. That event eliminated most members of the planetesimal disk, but a minority were emplaced into dynamically excited orbits in the present-day Kuiper belt. CCKBOs differ from those objects in having formed well beyond the 30-AU edge of the main planetesimal disk. They remain approximately where they formed, on low-inclination, near-circular orbits between 42 and 47 AU from the Sun, relicts of the early Solar System. Their distributions of colors, albedos, sizes, and binarity differ from those of the more excited KBOs.

**RATIONALE:** Initial results from the exploration of Arrokoth were published previously. More data have since been received from the spacecraft, allowing a more detailed analysis. We analyze a high-spatial resolution color imaging observation, near-infrared spectral imaging, and microwave radiometry of Arrokoth. The infrared spectral data have been processed to compensate for the changing range and scale during the observation. Our multiple scattering radiative transfer models provide compositional constraints from the infrared spectral imagery. Microwave thermal radiometry at 4.2-cm wavelength is combined with heat transport models that account for the bilobate shape of Arrokoth and for self-radiation.

**RESULTS:** At visual wavelengths, Arrokoth's reflectance rises toward longer wavelengths. This red coloration is typical of the broader CCKBO population that has been studied using telescopic observations. Color differences across

the surface of Arrokoth correspond to geological features. These color differences are subtle, with deviations of just a few percent around the prevailing red coloration. Some of the color variations are associated with albedo markings, such as the bright neck between the two lobes, bright splotches associated with a large pit or crater on the smaller lobe, and poorly resolved small bright spots. Methanol



**Visible and near-infrared wavelength views of Arrokoth.** (A) Blue, green, and red channels show wavelengths 0.40 to 0.55  $\mu\text{m}$ , 0.54 to 0.70  $\mu\text{m}$ , and 0.78 to 0.98  $\mu\text{m}$ , respectively. (B) These channels show wavelengths 1.2 to 1.6  $\mu\text{m}$ , 1.6 to 2.0  $\mu\text{m}$ , and 2.0 to 2.5  $\mu\text{m}$ , respectively.

ice ( $\text{CH}_3\text{OH}$ ) and complex organic tholins dominate the near-infrared reflectance spectrum, with  $\text{H}_2\text{O}$  ice contributing little or no detectable absorption. At the 4.2-cm microwave wavelength of New Horizons' radio system, Arrokoth's winter night side glows with an average brightness temperature of  $29 \pm 5$  K. This emission probably emerges from below the cold winter surface, at depths where warmth from the previous summer lingers. Our models show that self-radiation more than compensates

## ON OUR WEBSITE

Read the full article at <http://dx.doi.org/10.1126/science.aay3705>

for self-shadowing in the neck region between the two lobes, resulting in warmer temperatures in that region, by up to a few kelvin.

**CONCLUSION:** The nearly uniform coloration across Arrokoth is consistent with expectations for an object that accreted too quickly for the composition of the available nebular solids to have changed during the course of its accretion. Radiolysis and photolysis from long exposure to space radiation would be expected to result in a dark, space-weathered surface veneer that is distinct from the more pristine interior, but there is little evidence for such a coating, perhaps because radiolytically processed material is eroded away faster than it accumulates. The abundance of  $\text{CH}_3\text{OH}$  ice and apparent scarcity of  $\text{H}_2\text{O}$  ice appear to be signatures of a distinct environment in the cold, dust-shaded midplane of the outer nebula during formation of the Solar System. In this region, temperatures would have been low enough that volatile CO and  $\text{CH}_4$  could freeze onto dust grains, enabling production of  $\text{CH}_3\text{OH}$  and perhaps also destruction of  $\text{H}_2\text{O}$ . When the nebular dust dissipated some time after Arrokoth's formation, exposure to sunlight would have raised its temperature, rapidly driving off condensed CO and  $\text{CH}_4$ . The temperature has remained too cold to crystallize amorphous  $\text{H}_2\text{O}$ . Volatile species may remain trapped in amorphous  $\text{H}_2\text{O}$  ice within Arrokoth's interior, but the infrared spectrum shows little evidence for such ice at the surface. Although the neck region gets slightly warmer than the rest of Arrokoth's surface, this effect is small relative to the winter-summer temperature contrast and is thus unlikely to account for the distinctly higher albedo and slightly less red material that is seen there. A more plausible explanation for the neck's albedo and color contrasts involves texture changes induced by the merger of the two lobes or subsequent downslope movement of material there. ■

The list of author affiliations is available in the full article online.  
\*Corresponding author. Email: [w.grundy@lowell.edu](mailto:w.grundy@lowell.edu)  
Cite this article as W. M. Grundy et al., *Science* 367, eaay3705 (2020). DOI: 10.1126/science.aay3705

## RESEARCH ARTICLE

## OUTER SOLAR SYSTEM

## Color, composition, and thermal environment of Kuiper Belt object (486958) Arrokoth

W. M. Grundy<sup>1,2\*</sup>, M. K. Bird<sup>3,4</sup>, D. T. Britt<sup>5</sup>, J. C. Cook<sup>6</sup>, D. P. Cruikshank<sup>7</sup>, C. J. A. Howett<sup>8</sup>, S. Krijt<sup>9</sup>, I. R. Linscott<sup>10</sup>, C. B. Olkin<sup>8</sup>, A. H. Parker<sup>8</sup>, S. Protopapa<sup>8</sup>, M. Ruard<sup>7</sup>, O. M. Umurhan<sup>7,11</sup>, L. A. Young<sup>8</sup>, C. M. Dalle Ore<sup>7,11</sup>, J. J. Kavelaars<sup>12,13</sup>, J. T. Keane<sup>14</sup>, Y. J. Pendleton<sup>7</sup>, S. B. Porter<sup>8</sup>, F. Scipioni<sup>7,11</sup>, J. R. Spencer<sup>8</sup>, S. A. Stern<sup>8</sup>, A. J. Verbiscer<sup>15</sup>, H. A. Weaver<sup>16</sup>, R. P. Binzel<sup>17</sup>, M. W. Buie<sup>8</sup>, B. J. Buratti<sup>18</sup>, A. Cheng<sup>16</sup>, A. M. Earle<sup>17</sup>, H. A. Elliott<sup>19</sup>, L. Gabasova<sup>20</sup>, G. R. Gladstone<sup>19</sup>, M. E. Hill<sup>16</sup>, M. Horanyi<sup>21</sup>, D. E. Jennings<sup>22</sup>, A. W. Lunsford<sup>22</sup>, D. J. McComas<sup>23</sup>, W. B. McKinnon<sup>24</sup>, R. L. McNutt Jr.<sup>16</sup>, J. M. Moore<sup>7</sup>, J. W. Parker<sup>8</sup>, E. Quirico<sup>20</sup>, D. C. Reuter<sup>22</sup>, P. M. Schenk<sup>25</sup>, B. Schmitt<sup>20</sup>, M. R. Showalter<sup>11</sup>, K. N. Singer<sup>8</sup>, G. E. Weigle II<sup>26</sup>, A. M. Zangari<sup>8</sup>

The outer Solar System object (486958) Arrokoth (provisional designation 2014 MU<sub>69</sub>) has been largely undisturbed since its formation. We studied its surface composition using data collected by the New Horizons spacecraft. Methanol ice is present along with organic material, which may have formed through irradiation of simple molecules. Water ice was not detected. This composition indicates hydrogenation of carbon monoxide-rich ice and/or energetic processing of methane condensed on water ice grains in the cold, outer edge of the early Solar System. There are only small regional variations in color and spectra across the surface, which suggests that Arrokoth formed from a homogeneous or well-mixed reservoir of solids. Microwave thermal emission from the winter night side is consistent with a mean brightness temperature of  $29 \pm 5$  kelvin.

The New Horizons spacecraft flew past (486958) Arrokoth at the beginning of 2019 (1). Arrokoth rotates with a 15.9-hour period, about a spin axis inclined  $99.3^\circ$  to the pole of its 298-year orbit, at a mean distance from the Sun of 44.2 AU (2, 3). Its near-circular orbit, with a mean eccentricity of 0.03 and inclination of  $2.4^\circ$  to the plane of the Solar System, makes it a Kuiper Belt object (KBO) and

specifically a member of the “kernel” sub-population of the cold classical KBOs (CCKBOs) (4). The origins and properties of CCKBOs are distinct from those of KBOs on more excited orbits, which are thought to have formed closer to the Sun before being perturbed outward by migrating giant planets early in Solar System history (5). CCKBOs still orbit where they formed in the protoplanetary nebula (the accretion disk of gas and dust around the young Sun). CCKBOs have a high fraction of binary objects (6), a uniformly red color distribution (7, 8), a size-frequency distribution deficient in large objects (9, 10), and higher albedos (11, 12) than other KBOs. These properties arise from the environment at the outermost edge of the protoplanetary nebula, from a distinct history of subsequent evolution of CCKBOs relative to other KBOs, or of some combination of these two. Arrokoth provides a record of the process of forming planetesimals—the first generation of gravitationally bound bodies—that has been minimally altered by subsequent processes such as heating and impactor bombardment (3). Its distinctive bilobed, 35-km-long shape with few impact craters favors formation via rapid gravitational collapse, rather than scenarios involving more gradual accretion via piecemeal agglomeration of dust particles to assemble incrementally larger aggregates (13). We study Arrokoth’s color, composition, and thermal environment using data from the New Horizons flyby and discuss the resulting implications for its formation and subsequent evolution.

## Instruments and data

New Horizons encountered Arrokoth when it was 43.28 AU from the Sun, collecting data with a suite of scientific instruments. Color and compositional remote sensing data were provided by the Ralph color camera and imaging spectrometer, sensitive to wavelengths between 0.4 and 2.5  $\mu\text{m}$  (14). Over this wavelength range, all light observed from Arrokoth is reflected sunlight, with the wavelength dependence of the reflectance indicative of surface composition and texture. Ralph’s two focal planes share a single 75-mm aperture telescope using a dichroic beamsplitter. The Multi-spectral Visible Imaging Camera (MVIC) provides panchromatic and color imaging in four color filters: BLUE (400 to 550 nm), RED (540 to 700 nm), NIR (780 to 975 nm), and CH4 (860 to 910 nm) (15). The highest-spatial resolution MVIC color observation of Arrokoth, designated as CA05, was obtained on 1 January 2019 at 05:14 UTC (coordinated universal time), from a range of 17,200 km, at an image scale of 340 m per pixel and phase angle of  $15.5^\circ$ . This provides more spatial detail than the CA02 MVIC color scan at 860 m per pixel (7).

Ralph’s Linear Etalon Infrared Spectral Array (LEISA) images its target scene through a linear variable filter covering wavelengths from 1.2 to 2.5  $\mu\text{m}$  at a spectral resolving power of about 240. Frames are recorded while the spacecraft scans LEISA’s field of view across the scene; this enables each location to be captured at each wavelength of the filter. The highest-spatial resolution LEISA observation, designated as CA04, was executed around 04:58 UTC, shortly before the CA05 MVIC observation, from a phase angle of  $12.6^\circ$  and a mean range of 31,000 km, resulting in a mean image scale of 1.9 km per pixel (15).

New Horizons’ panchromatic Long-Range Reconnaissance Imager [LORRI (16)] is co-aligned with Ralph and can record images while the spacecraft is scanning for a Ralph observation. Such LORRI observations, referred to as “riders,” are limited to short integration times to minimize image smear from scan motion, but multiple images can be recorded and combined in postprocessing, providing for longer effective integration times (3). LORRI rider observations were obtained during both the CA04 and CA05 observations, providing higher-spatial resolution context images for the Ralph observations.

New Horizons’ Radio Science Experiment [REX (17)] was used to observe thermal emission in the X-band (4.2-cm wavelength, 7.2 GHz) from Arrokoth’s Sun-oriented face on approach and then from its anti-Sun-oriented face on departure. The two REX observations, designated as CA03 and CA08, respectively, were obtained on 1 January at mean times of 04:34 and 05:52 UTC, phase angles of  $11.9^\circ$  and  $162.0^\circ$ , and ranges of 52,000 and 16,700 km. At those

<sup>1</sup>Lowell Observatory, Flagstaff, AZ 86001, USA. <sup>2</sup>Department of Astronomy and Planetary Science, Northern Arizona University, Flagstaff, AZ 86011, USA. <sup>3</sup>Argelander-Institut für Astronomie, University of Bonn, D-53121 Bonn, Germany. <sup>4</sup>Rheinisches Institut für Umweltforschung, Universität zu Köln, 50931 Cologne, Germany. <sup>5</sup>University of Central Florida, Orlando, FL 32816, USA. <sup>6</sup>Pinhead Institute, Telluride, CO 81435, USA. <sup>7</sup>NASA Ames Research Center, Moffett Field, CA 94035, USA. <sup>8</sup>Southwest Research Institute, Boulder, CO 80302, USA. <sup>9</sup>Steward Observatory, University of Arizona, Tucson, AZ 85719, USA. <sup>10</sup>Stanford University, Stanford, CA 94305, USA. <sup>11</sup>Carl Sagan Center, SETI Institute, Mountain View, CA 94043, USA. <sup>12</sup>National Research Council, Victoria, BC V9E 2E7, Canada. <sup>13</sup>Department of Physics and Astronomy, University of Victoria, Victoria, BC V8W 2Y2, Canada. <sup>14</sup>California Institute of Technology, Pasadena, CA 91125, USA. <sup>15</sup>University of Virginia, Charlottesville, VA 22904, USA. <sup>16</sup>Johns Hopkins University Applied Physics Laboratory, Laurel, MD 20723, USA. <sup>17</sup>Massachusetts Institute of Technology, Cambridge, MA 02139, USA. <sup>18</sup>NASA Jet Propulsion Laboratory, La Cañada Flintridge, CA 91011, USA. <sup>19</sup>Southwest Research Institute, San Antonio, TX 78238, USA. <sup>20</sup>Institut de Planétologie et d’Astrophysique de Grenoble, Centre National de la Recherche Scientifique, Université Grenoble Alpes, Grenoble, France. <sup>21</sup>University of Colorado, Boulder, CO 80309, USA. <sup>22</sup>NASA Goddard Space Flight Center, Greenbelt, MD 20771, USA. <sup>23</sup>Princeton University, Princeton, NJ 08544, USA. <sup>24</sup>Washington University, St. Louis, MO 63130, USA. <sup>25</sup>Lunar and Planetary Institute, Houston, TX 77058, USA. <sup>26</sup>Big Head Endian LLC, Leawood, KS 67019, USA. \*Corresponding author. Email: w.grundy@lowell.edu

distances, Arrokoth was unresolved, appearing much smaller than the  $1.2^\circ$  width (at 3 dB) of the high-gain antenna beam. Two independent receivers recorded the radio flux density in different polarizations at a sampling rate of 10 Hz. The REX A receiver recorded right circularly polarized flux while REX B recorded left circularly polarized flux.

### Visible-wavelength

The CA02 MVIC color scan (1) had shown Arrokoth to be red but revealed little spatial variation in color. The higher-resolution CA05 observation allows us to better quantify Arrokoth's regional color variations. Figure 1 compares the CA05 color image with the contemporaneous LORRI panchromatic rider image. Color slopes, computed by fitting a linear model to the MVIC BLUE, RED, and NIR filter reflectance data, are shown in Fig. 1C. All of Arrokoth's surface is red in color, with a mean color slope of  $27\%$  rise per 100 nm relative (at 550 nm). This quantification of color slopes is commonly used for KBOs, being convenient for comparison of colors obtained using different filter sets (18). Even in the higher spatial resolution of the CA05 observation, the color distribution is largely uniform across the observed face of Arrokoth, with a standard deviation in slope of only  $\pm 2.7\%$  per 100 nm.

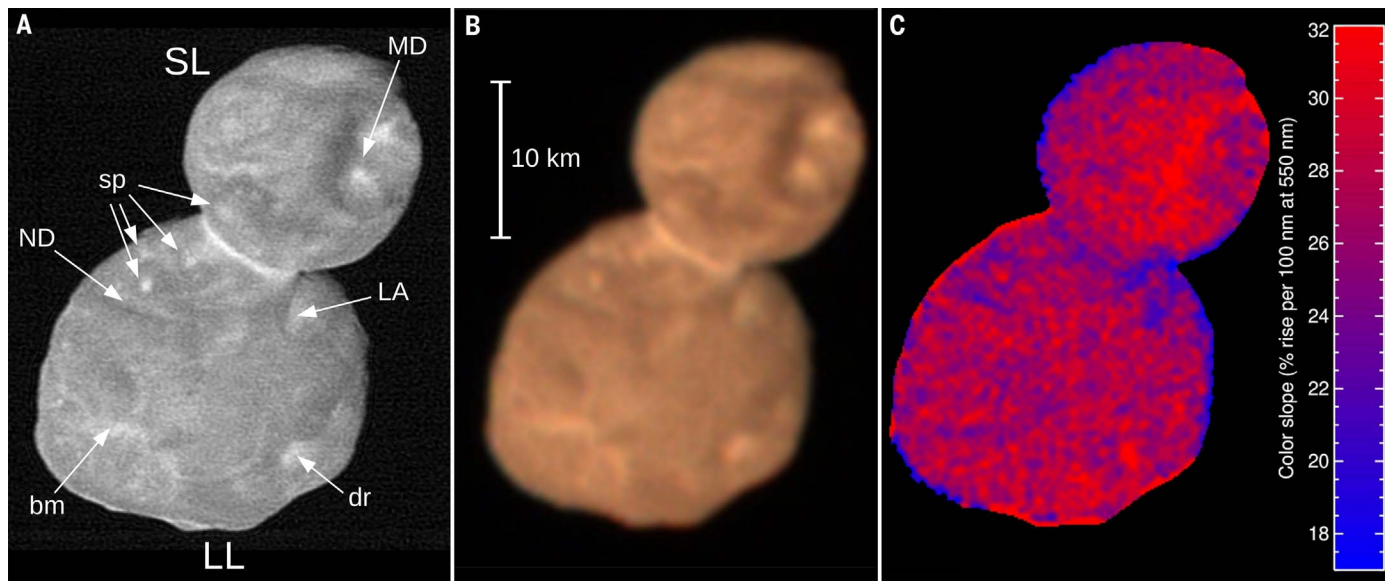
Subtle regional color differences correspond to specific geological and albedo features discussed in a companion paper (3). The smaller lobe (SL) appears slightly redder on average

than the larger lobe (LL) [ $28 \pm 2\%$  average slope versus  $27 \pm 2\%$  for LL, where the  $\pm 2$  values represent the variance across each lobe, rather than the uncertainty in the measurement of the mean slopes, which is much smaller for averages over many pixels (15)]. That difference appears to be mostly due to the redder rim (color slope  $30 \pm 2\%$ ) of a 6-km-diameter depression on SL, a possible impact crater informally designated as Maryland (MD; all place names are informal). Statistically significant color differences tend to be on similarly small (or smaller) spatial scales. Several slightly less red regions appear as blue in the color scale used in Fig. 1C. These include the brighter neck region where the two lobes intersect ( $25 \pm 1\%$  slope) and several regions on LL. Two regions that were not resolved in the earlier color data are Louisiana, a depression near the neck ( $23 \pm 2\%$  slope), and North Dakota, a linear depression or groove ( $24 \pm 1\%$  slope), labeled in Fig. 1A. Bright material (bm) in the geological map (3) is in some places more and in others less red than average, suggesting that that unit is composed of two or more distinct materials. Another depressed region (dr) on LL is slightly redder than the average ( $29 \pm 2\%$  slope). Some bright spots (sp) appear to have distinct colors as well, although they are not all the same; some are a little redder than average while others are a little less red. The lack of a consistent color pattern for these spots suggests that they may have resulted from delivery of diverse material in impacts rather than by

impact excavation of a uniform subsurface material. However, the nature of these spots remains ambiguous (3).

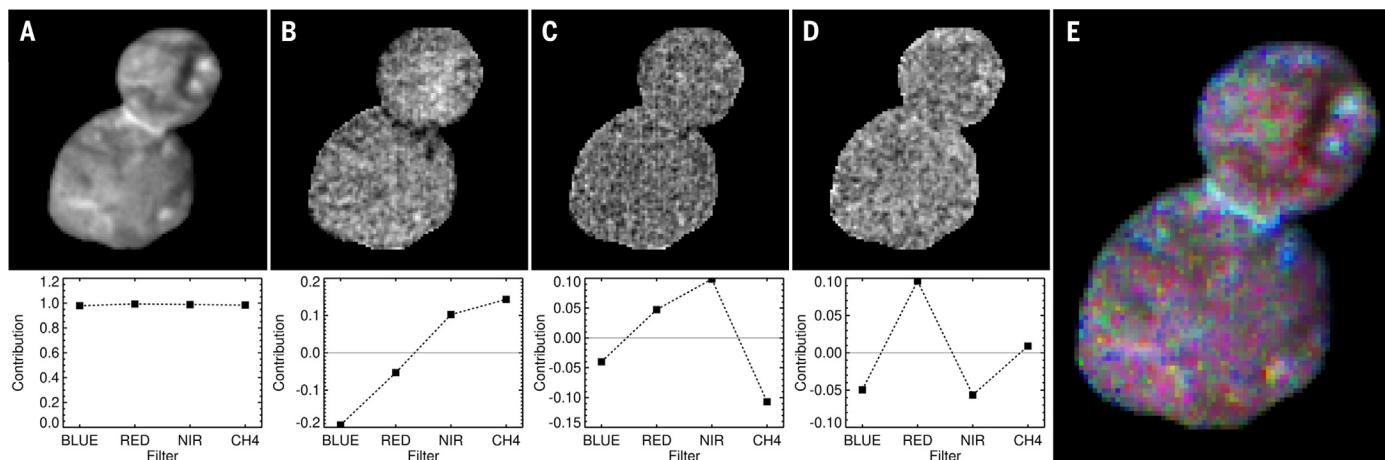
We performed a principal components analysis (PCA) of the color data (Fig. 2). This analysis projects the data into an orthogonal basis set, with the first axis corresponding to the axis of maximum variance within the data. The second axis corresponds to the maximum remaining variance after collapsing the data along the first axis, and so forth. Principal component 1 (PC1, Fig. 2A) corresponds with variations in brightness due to lighting and albedo, accounting for 97% of the total variance in the data. The corresponding eigenvector is flat across all filters. PC2 corresponds to redness (Fig. 2B), closely resembling the color slope map in Fig. 1C, and accounts for 1.8% of the total variance. PC3 and PC4 correspond to contrasts between the NIR and CH4 filters and to spectral curvature between BLUE, RED, and NIR filters, respectively. They account for only 1% of the variance between them, much of it due to image noise rather than real color variations across the surface of Arrokoth.

Red coloration on planetary bodies is often attributed to the presence of tholins (19). These are a broad class of refractory macromolecular polymer-like organic solids, commonly produced in laboratory simulations of energetic radiation acting on various combinations of simpler molecules (20–22). The precursors can be in gaseous form (23) or frozen solid (24, 25). Figure 3 compares the color of Arrokoth



**Fig. 1. The CA05 color observation of (486958) Arrokoth.** (A) LORRI panchromatic context image obtained as a rider during the CA05 observation; the geometry is nearly identical to the MVIC observation, but with a finer spatial scale of  $83 \text{ m pixel}^{-1}$ . Abbreviations and informal feature names (clockwise from top): SL, smaller lobe; MD, Maryland; LA, Louisiana; dr, depressed region; LL, larger lobe; bm, bright material; ND, North Dakota;

sp, bright spots. These features can be seen more clearly in higher-resolution LORRI images [figure 1 of (3)]. (B) Color observation CA05, at a spatial scale of  $340 \text{ m pixel}^{-1}$ . The BLUE filter (400 to 550 nm) is displayed in blue, RED filter (540 to 700 nm) in green, and NIR filter (780 to 975 nm) in red. (C) Color slope map obtained by fitting a linear model to the BLUE, RED, and NIR reflectance values.

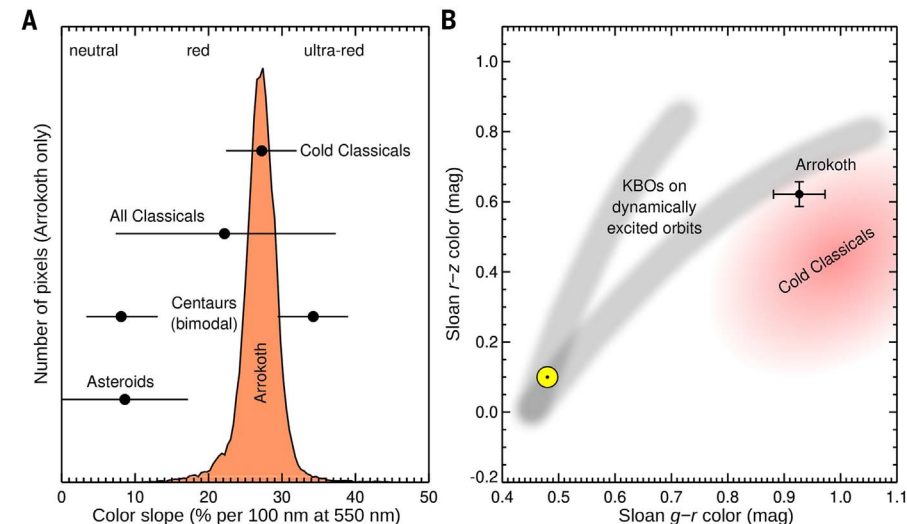


**Fig. 2. Principal components analysis of the CA05 color data.** (A to D) Principal components images (PCs) 1 through 4, with the corresponding eigenvector for each. The images show the regional distribution of the spectral characteristic indicated by the eigenvector. For example, the PC2 eigenvector shows a red slope (B). The corresponding image shows high values where Arrokoth is reddest and low values where it is least red. The y axes of the eigenvector plots give the contribution of each filter to its respective PC. (E) False-color image highlighting color contrasts across Arrokoth with PC2, PC3, and PC4 displayed in the red, green, and blue channels, respectively, with shading from the PC1 image.

with that of other KBOs and related populations. Arrokoth's color slope is consistent with other CCKBOs (8). It is less red than the reddest KBOs and the red group of Centaurs (26), whose red coloration is generally interpreted as due to tholins (19). Arrokoth is much more red than the gray Centaurs and various classes of asteroids (27), including the red D-type asteroids that dominate the Jupiter Trojan population (28). Using the Sloan  $g$ ,  $r$ , and  $z$  filters, KBO colors can be placed on a color-color plot of  $g-r$  and  $r-z$  color differences, which has revealed a distinction between CCKBOs and more dynamically excited KBO populations (8). The latter appear to follow two color tracks (29) (Fig. 3B) while the CCKBOs cluster below and to the right, owing to their red slopes becoming less steep at  $z$ -band wavelengths (0.82 to 0.96  $\mu\text{m}$ ). Arrokoth's red slope continues into MVIC's NIR band (0.78 to 1  $\mu\text{m}$ ). After converting to Sloan colors, Arrokoth lies above the main clump of CCKBO colors in Fig. 3B, although this is consistent with the overall CCKBO color distribution.

### Near-infrared spectral reflectance

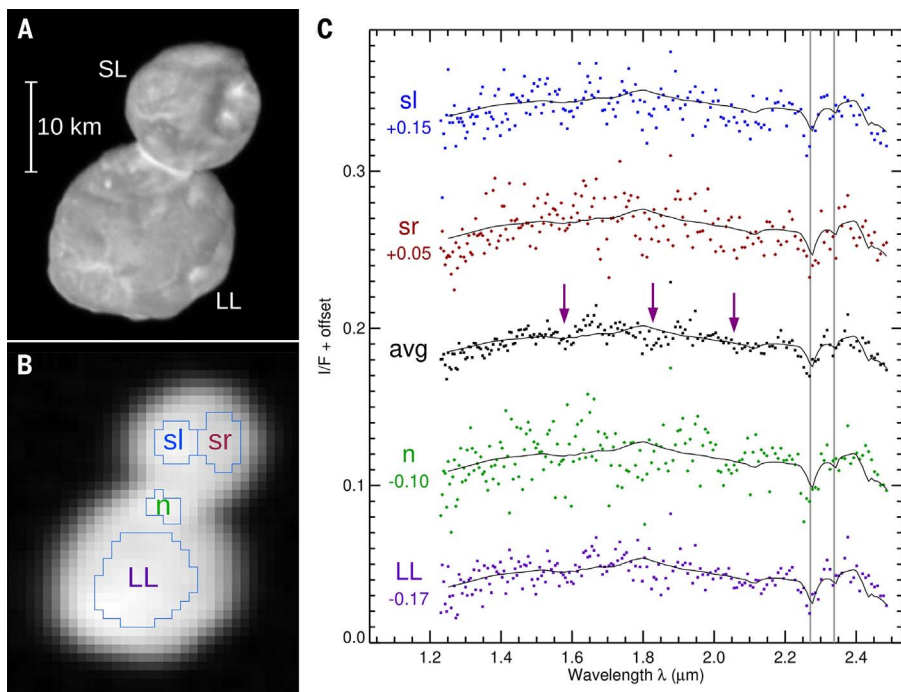
The LEISA data were processed into a spectral cube, with spatial dimensions along two axes and wavelength along the third axis (15). The cube-building algorithm we adopted accounts for changes in spacecraft range over the course of the CA04 LEISA scan [unlike (1)]. The spatial resolution of the LEISA data is considerably coarser than that of the corresponding LORRI rider (Fig. 4), and the signal/noise ratio is considerably lower. Noise in the LEISA data is dominated by instrumental effects, which are as large as the signal from sunlit areas on Arrokoth, so spectral features can only be revealed by averaging over multiple pixels



**Fig. 3. Comparison of Arrokoth's color with other populations.** (A) Histogram of Arrokoth color slopes shown in Fig. 1C. Typical color ranges for other Solar System small-body populations are indicated via horizontal bars [e.g., (8, 18, 26–29)]. (B) Color-color plot using Sloan  $g$ ,  $r$ , and  $z$  filters, with the additional wavelength providing sensitivity to spectral curvature in addition to slope. In this color-color space, KBOs form three distinct zones (8). The gray tracks are populated by KBOs on dynamically excited (higher inclination and/or eccentricity) orbits; CCKBOs occupy the red zone. Arrokoth lies above the center of the CCKBO clump, because its red slope declines less into the  $z$ -band than the average for CCKBOs. The yellow Sun symbol indicates solar color, corresponding to neutral spectral reflectance at visible wavelengths.

and/or wavelengths. The spatially averaged spectrum (Fig. 4C) lacks the strong absorption features that were seen in the Pluto system [e.g., (30)]. The red color slope seen in the visible flattens with increasing wavelength to become neutral by  $\sim 1.5$   $\mu\text{m}$ . We constructed Hapke reflectance models (15, 31) for various combinations of potential surface components. The data support inclusion of amorphous carbon and tholins in the models. Combinations

of these materials match the overall albedo and spectral shape. Although we used tholins made in conditions simulating the atmosphere of the moon Titan (20), the data do not support singling out any of the various tholins with published optical constants. None have been made under simulated outer nebular conditions, so they may not be particularly good analogs for the tholins on Arrokoth. Amorphous carbon has no diagnostic spectral features in this wavelength



**Fig. 4. The CA04 infrared spectral observation of Arrokoth.** (A) The LORRI CA04 rider image for context, with a spatial scale of  $138 \text{ m pixel}^{-1}$ . (B) LEISA image with regions of interest (ROIs) indicated, with a much coarser mean spatial scale of  $1.9 \text{ km pixel}^{-1}$ . (C) Average and ROI spectra (points) compared with the Hapke model fitted to the average spectrum (black curves). Vertical gray lines indicate the wavelengths of the two strongest  $\text{CH}_3\text{OH}$  ice absorptions. Purple arrows mark other possible features discussed in the text.  $I/F$  is defined as the ratio of the bidirectional reflectance to that of a perfectly diffusely scattering surface illuminated normally (31).

range, so it cannot be specifically identified. Any dark, spectrally neutral material would be equally consistent with the data.

Shallow absorption bands can be discerned near  $1.5$  to  $1.6 \mu\text{m}$ ,  $1.8 \mu\text{m}$ ,  $2.0$  to  $2.1 \mu\text{m}$ ,  $2.27 \mu\text{m}$ , and  $2.34 \mu\text{m}$  (Fig. 4C). Inclusion of ices of methanol ( $\text{CH}_3\text{OH}$ ), water ( $\text{H}_2\text{O}$ ), and ammonia ( $\text{NH}_3$ ) enables the models to match many of these features, but not the one at  $1.8 \mu\text{m}$ . With the low signal/noise ratio of the LEISA spectrum, even in the global average, we must consider the information content and limit the model free parameters to those that can be statistically justified. Of the molecular ices we tried, only the addition of  $\text{CH}_3\text{OH}$  produces a sufficiently large improvement in  $\chi^2$  to constitute a confident detection (15). This does not preclude the presence of  $\text{H}_2\text{O}$  or  $\text{NH}_3$  ices, but the available data do not provide statistically significant evidence for their presence. Adding more than a trace of them to the models makes  $\chi^2$  worse, but the increase can be minimized with large grain sizes that limit the projected area of  $\text{H}_2\text{O}$  or  $\text{NH}_3$  grains to a small fraction of the total. Small amounts of other ices, such as  $\text{H}_2\text{CO}$ ,  $\text{CO}_2$ , or  $\text{C}_2\text{H}_6$ , could also be compatible with the data, as could the silicate and metallic phases that have been seen in comets and interplanetary dust particles. The  $1.8\text{-}\mu\text{m}$  feature in Arrokoth's spectrum is not

matched by available ices or tholins and remains unidentified. It could be an artifact.

To search for spectral contrasts across the surface of Arrokoth, we selected several regions of interest (ROIs), as shown in Fig. 4B. These include LL, the brighter neck region (n), and a pair of ROIs on the left and right sides of SL: sr, which incorporates the redder material on the rim of Maryland, and sl, which represents portions of SL unrelated to Maryland. Spectra of these regions are shown in Fig. 4C. In averaging over fewer pixels, the signal/noise ratios in the ROI spectra are correspondingly poorer than the global average. However, the ROI spectra all look very similar to the average, and fitting Hapke models shows that tholin, carbon, and  $\text{CH}_3\text{OH}$  are favored, without statistically significant evidence for  $\text{H}_2\text{O}$  or  $\text{NH}_3$  ices, just as with the average.

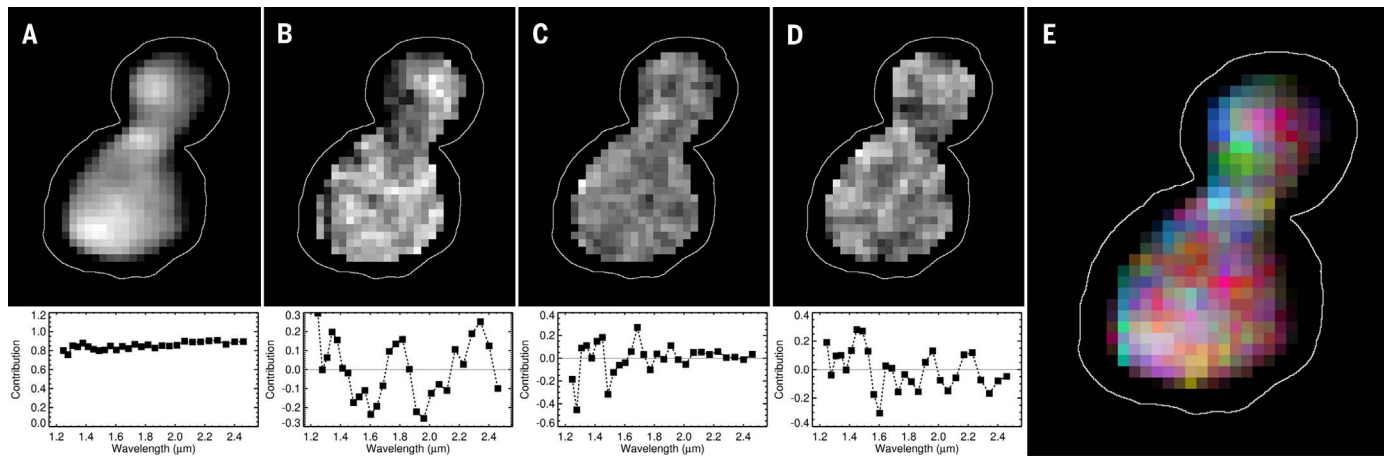
Our confidence in the detection of  $\text{CH}_3\text{OH}$  is increased by the appearance of two distinct absorption bands of methanol ice: one band at  $2.271 \mu\text{m}$ , attributed to  $(\nu_1 + \nu_{11})$  or  $(\nu_1 + \nu_7)$  vibrational combination modes, and another at  $2.338 \mu\text{m}$ , attributed to  $(\nu_1 + \nu_8)$  (32). These spectral characteristics have been seen in Earth-based spectra of the Centaur 5145 Pholus (33) and the resonant KBO (55638) 2002  $\text{VE}_{95}$  (34). Additional, weaker  $\text{CH}_3\text{OH}$  absorption bands at  $1.6$  and  $2.1 \mu\text{m}$  are not visible in Arrokoth's

spectrum. In the case of Pholus, the spectrum from  $0.45$  to  $2.45 \mu\text{m}$  was fitted with a radiative transfer model incorporating solid  $\text{CH}_3\text{OH}$  and  $\text{H}_2\text{O}$ , in addition to an iron-bearing olivine (forsterite Fo 82) and tholin (33), similar to our models for Arrokoth, except that  $\text{H}_2\text{O}$  ice is not required in the Arrokoth models.

To assess spectral contrasts in a way that does not depend on multiple scattering models, we performed a PCA on the LEISA cube, with results shown in Fig. 5. Because of the low signal/noise ratio, we first binned the wavelengths down to 28 channels, producing an effective spectral resolving power of 39. We also discarded pixels along the edge where jitter during the scan is prone to producing artifacts. As with the MVIC colors, PC1 is sensitive to the overall light variation from shading and albedo, with the eigenvector flat across all wavelengths (Fig. 5A). PC1 accounts for 72% of the total variance in the LEISA data. PC2 captures only 2.3% of the variance, but the eigenvector shows pronounced dips around  $1.5$  and  $2 \mu\text{m}$ , where  $\text{H}_2\text{O}$  ice has its strongest absorption bands within LEISA's spectral range; this finding suggests that regional variations in  $\text{H}_2\text{O}$  ice absorption could be the next most prominent source of spectral variance across the surface of Arrokoth, perhaps being most abundant around Maryland crater. However, the absence of strong  $\text{H}_2\text{O}$  absorptions in any of our extracted spectra (including the sr ROI that covers this region) reduces confidence in that conclusion. Subsequent PCs account for even lower fractions of the total variance. The lack of spatial coherence in the images, coupled with eigenvectors that are not suggestive of absorption by likely surface constituents, suggests that the higher PCs are responding mostly to instrumental noise rather than to signal in the LEISA data.

### Thermal environment

The CA03 REX observation was performed on approach, observing Arrokoth's day side; the CA08 observation was done after closest approach, looking back at Arrokoth's night side. The microwave sky background is shown in Fig. 6A (35, 36). The CA03 observation was performed with a fixed staring geometry. A later observation of the same field was obtained for background subtraction, but the system antenna temperature drifts over time, making it difficult to separate out the flux from Arrokoth. The CA08 night-side observation was obtained under more favorable geometry, from a closer range, and with the antenna scanned along the uncertainty ellipse for Arrokoth's location. Scanning instead of staring facilitated calibration against the later background observation despite the drift in system response. The flux measurements are shown Fig. 6B. The radiometric signal was converted to radio brightness temperature



**Fig. 5. Principal components analysis of the CA04 infrared spectral imaging data.** (A to E) Same as Fig. 2, but for the LEISA observation in Fig. 4. Edge pixels have been removed; the white outlines show the full extent of Arrokoth.

using procedures developed earlier in the mission, accounting for the solid angle subtended by Arrokoth within the antenna beam (15, 17, 36, 37). Accounting for the 414.4-km<sup>2</sup> cross section of Arrokoth and noise from instrument and background, we obtain a mean brightness temperature  $T_B$ , averaged across the night-side visible face of Arrokoth, of  $T_B = 29 \pm 5$  K, which is within the range of brightness temperatures estimated from an earlier analysis (1). To translate that brightness temperature to a kinetic temperature requires knowledge of the X-band emissivity of Arrokoth's surface, which is not known but most likely lies in the range 0.7 to 0.9 (36).

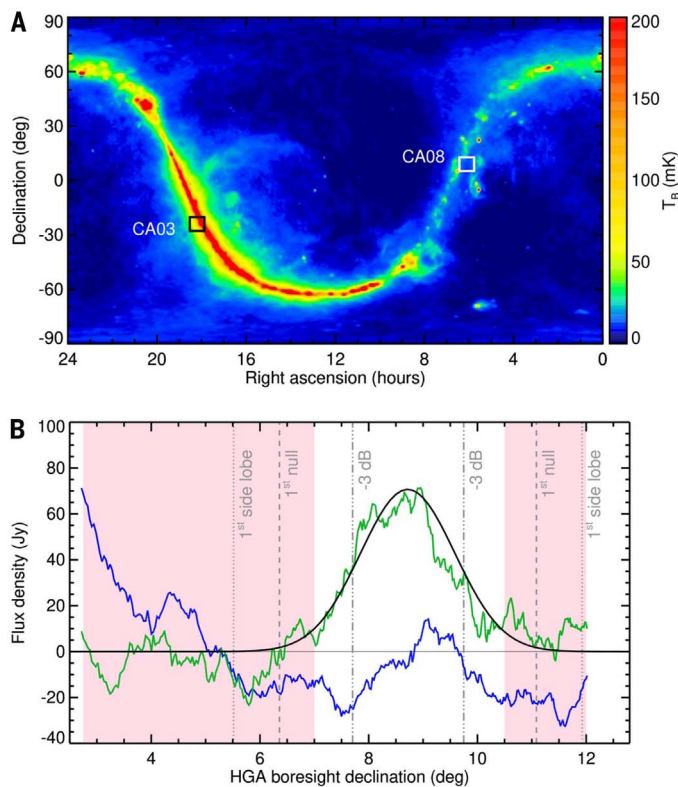
Thermophysical models were used to assess the implications of this  $T_B$  measurement (15). For each surface element of the three-dimensional (3D) shape model (3), we balanced radiative losses and thermal conduction against insolation (received sunlight) and also reradiation from other parts of Arrokoth's surface visible from that location. Accounting for self-shadowing and surface reradiation makes this modeling inherently global in scope (38). Sub-surface thermal evolution was simulated with a 1D thermal diffusion prescription (15). For simplicity, we assume that Arrokoth's obliquity does not precess and that its orbit is circular, with a semimajor axis of 44.2 AU and period of 298 years. At this distance, the incident solar radiation flux  $F_\odot$  is  $0.7 \text{ W m}^{-2}$ . Given Arrokoth's 99.3° obliquity (2), seasonal effects are strong. We determined the subsolar latitude along approximately 300 equally spaced temporal nodes over one orbital period (15). During the New Horizons flyby, the subsolar latitude was approximately  $-62^\circ$ . At each orbital node, the daily averaged (15.9-hour period) solar insolation was calculated, accounting for self-shadowing. With these diurnally averaged insolation profiles, we determined the surface temperature on every element over

the course of an orbit. We assumed that the subsurface thermal response is in the time-asymptotic limit, meaning there is no net gain or loss of thermal energy into or out of the interior over the course of one orbit (39). This assumption requires heat from radioactive decay inside Arrokoth to be negligible and requires the interior to have reached thermal equilibrium with the Sun over the course of the lifetime of the Solar System (see below).

We assume that the low-bond albedo [ $A_B = 0.06$  (1, 3)] surface of Arrokoth is characterized by a very low thermal inertia ( $\Gamma = 2.5 \text{ J m}^{-2} \text{ s}^{-1/2} \text{ K}^{-1}$ ) typical of loosely consolidated granular material, as inferred from infrared observations of KBOs (40). The thermal inertia is given by  $\Gamma \equiv \sqrt{k\rho C_p}$ , where  $k$  is thermal conductivity,  $\rho$  is density, and  $C_p$  is specific heat at constant pressure. Arrokoth's bulk density must be at least  $290 \text{ kg m}^{-3}$  (3) and densities of small KBOs and comet nuclei tend to be higher than that, but generally less than  $1000 \text{ kg m}^{-3}$  (41, 42). The density near the surface that matters for Arrokoth's thermal response is even more uncertain and could differ substantially from the bulk density. We assume a generic density of  $\rho = 500 \text{ kg m}^{-3}$  (3) and that  $C_p = 350 \text{ J kg}^{-1} \text{ K}^{-1}$ . Under these assumptions, the corresponding thermal conductivity is  $3.6 \times 10^{-5} \text{ W m}^{-1} \text{ K}^{-1}$ , very low relative to values determined for surfaces in the inner Solar System. These values correspond to a seasonal thermal skin depth  $\lambda = 0.55 \text{ m}$ , where  $\lambda \equiv \sqrt{k\tau_s(\rho C_p 2\pi)^{-1}}$  and  $\tau_s$  is the 298-year seasonal period (43). This value is similar to the electrical skin depth (36). The subsolar equilibrium temperature  $T_* = 58 \text{ K}$  was obtained from  $\epsilon\sigma T_*^4 = (1 - A_B)F_\odot$ , where  $\epsilon$  is emissivity [commonly assumed to be 0.9; e.g., (40, 43)],  $\sigma$  is the Stefan-Boltzmann constant ( $5.67 \times 10^{-8} \text{ W m}^{-2} \text{ K}^{-4}$ ), and  $F_\odot$  is the solar flux at 44.2 AU. The thermal parameter  $\Theta \equiv \Gamma\omega_0^{1/2}\sigma^{-1}T_*^{-3}$  characterizes the efficiency

of the energy transport rate (per K) of thermal conduction across one seasonal skin depth relative to radiative losses (43), which is about  $\Theta \equiv 0.02$  for Arrokoth. Such a small value of  $\Theta$  indicates that the surface layers are highly insulating, leading to extreme variations in surface temperature over the course of a year. Winter surface temperatures are much lower than peak summer temperatures. The low conductivity might only pertain to a surficial layer. If deeper below the surface the texture is more compacted with greater granular contact, the conductivity would likely be higher. We can estimate the body's thermalization time scale by calculating the thermal wave propagation time ( $t_{\text{thermalization}} \equiv 2\pi\rho C_p R^2 k^{-1}$ ) across a length scale  $R$  corresponding to the characteristic radius of the short axes of both lobes ( $\sim 3.5 \text{ km}$ ). For values of  $k$  greater than  $10^{-4} \text{ W m}^{-1} \text{ K}^{-1}$ , this time scale is less than the age of the Solar System, supporting our assumption of a time-asymptotic state.

Figure 7A shows the insolation averaged over an orbit from two viewing positions. The flattened shape and high obliquity lead to the equator receiving less energy on average ( $\sim 0.1 \text{ W m}^{-2}$ ) than the poles ( $\sim 0.2 \text{ W m}^{-2}$ ). Owing to self-shadowing, the neck region generally receives less energy than the equatorial zone (ranging from 0.06 to  $0.08 \text{ W m}^{-2}$ ). Figure 7B shows the additional radiation received from thermal emission from other parts of Arrokoth itself, again averaged over an orbit. Our model indicates that the neck region is warmed by this trapping process, receiving about 0.025 to  $0.04 \text{ W m}^{-2}$  from self-reradiation, which partially offsets the effect of shadowing. Figure 7C shows the orbital average of the warming due to self-reradiation. The neck region experiences the greatest amount of relative warming, in the range of  $\sim 1$  to 3 K. Maryland crater also receives enhanced thermal reradiation, but the relative warming in



**Fig. 6. Microwave radiometry of Arrokoth.** (A) 7.1-GHz microwave sky background based on an all-sky radio map (35) sampled at REX's 4.2-cm wavelength and smoothed to REX's 1.2° beam width (36), indicating the locations of the CA03 and CA08 observations. [Reproduced from (36) with permission] (B) Observed flux during the CA08 scan in green, with the later background scan in blue. Shaded areas were used to calibrate the two observations for background subtraction. The black curve is a model response for a  $T_B = 30$  K source with the 414-km<sup>2</sup> projected area of Arrokoth. (C) CA07 LORRI image (3) obtained 10 min before the mid-time of the REX scan, at nearly identical lighting geometry but a  $\sim 10^\circ$  shift in viewing geometry, showing more of the lit crescent than was visible at the time of the CA08 REX observation.

that region is slight, about 0.5 K. Figure 7D shows the predicted observable surface temperature at the time of the New Horizons encounter: Typical temperatures are in the range of 50 to 57 K near the poles of each lobe, falling to  $\sim 40$  K near the equator. Parts of the neck region that are not shaded at times of high subsolar latitude ( $-62^\circ$  at the time of the encounter) stand out as having among the warmest surface temperatures during the encounter, as high as 60 K.

Figure 7E shows the predicted surface temperature at the time and viewing geometry of the CA08 REX observation, during which the sub-spacecraft point was latitude  $+44^\circ$ , longitude  $78^\circ$ E. From this orientation, the model global averaged surface temperature is 16.1 K. Although the surface temperature within the bulk of the body's winter night side is predicted to be in the range of 12 to 14 K, the contribution to the average from the viewable part of the lit equatorial region (top of Fig. 7E;  $T \sim 40$  to 55 K) raises the average temperature only slightly. The observed thermal emission seen by REX yields a much warmer mean brightness temperature of 29 K. If the model is correct, this discrepancy implies that the 4.2-cm radiation emerges primarily from the warmer subsurface, which is consistent with the expectation that the 4.2-cm thermal emission samples many wavelengths into the surface (36). Higher thermal inertias than we have assumed would also permit warmer winter surface temperatures (15).

#### Implications for formation

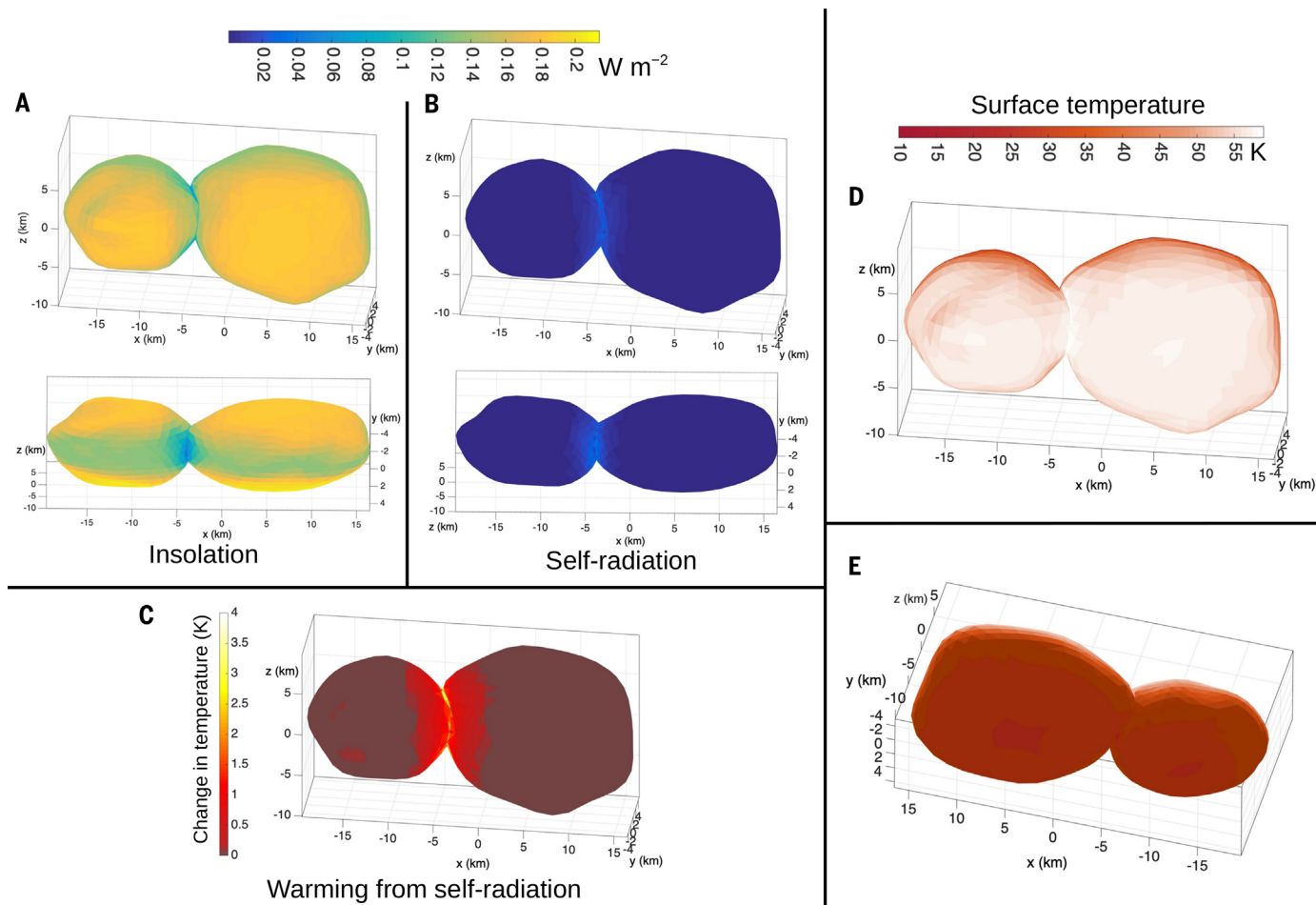
The distribution of orbits in the present-day Kuiper belt was strongly influenced by an outward migration of Neptune early in Solar System history, resulting from dynamical interaction between Neptune and the disk of planetesimals [e.g., (44)]. Neptune's migration stopped at 30 AU from the Sun, indicating a break in the distribution of planetesimals in the disk, beyond which there was insufficient mass to drive Neptune's migration further outward (45). Most KBOs that have been studied spectroscopically [e.g., (46, 47)] are not CCKBOs; they originated in the denser planetesimal disk from inside 30 AU. Likewise, most comets that approach the Sun and Earth, and therefore can be studied in detail, likely do not sample the outer part of the nebula where it formed. Constraints include the evidence for methanol ice and the lack of evidence for water ice, which is unlike the high abundance of H<sub>2</sub>O in many outer Solar System bodies and interstellar grains.

CCKBOs appear to have formed in the outer solar nebula through the gravitational collapse of pebble-size particles, concentrated aerodynamically (13, 48). In this scenario, microscopic dust grains coagulate into larger particles (49, 50). As particles approach pebble sizes, they decouple from the gas, causing them to spend most of their time near the cold disk midplane and allowing them to become con-

centrated in dense clumps that can gravitationally collapse into planetesimals (51, 52). The (original) bulk composition of CCKBOs should reflect the makeup of the solids present in the midplane of the solar nebula at the time and location of their formation. It remains unclear, however, how long the dust coagulation phase lasted and/or how far pebbles were able to move radially inward [e.g., (53)] before they formed planetesimals.

When the solar nebula formed, the chemical composition of the ices present in the outer regions was set by a combination of inheritance from the parent molecular cloud and chemistry taking place during formation of the disk. In the midplane of the outer disk, the resulting CH<sub>3</sub>OH/H<sub>2</sub>O ratio on cold grain surfaces likely did not exceed a few percent (54). During the subsequent disk evolution, spatial variations in physical conditions such as temperature, density, and radiation environment, coupled with ongoing chemistry (55) and transport or mixing processes (56), result in gas-phase and ice compositions changing over time.

In regions where it was cold enough for highly volatile CO to freeze as ice onto grains (57), methanol could be formed through successive addition of hydrogen atoms to CO ice. Both interstellar and outer nebular environments are potential settings for this chemistry (58–60). Before the loss of nebular gas and dust, the midplane of the disk was shaded from direct sunlight and extremely cold, favoring condensation of CO in its outermost



**Fig. 7. Models of insolation and temperature across the surface of**

**Arrokoth.** (A) Insolation averaged over Arrokoth's orbit viewed from two different orientations. (B) Reradiation received from other portions of the shape on the same scale and from the same orientations as (A), also averaged over the orbit. The color scale applies to (A) and (B). (C) Seasonally averaged additional warming resulting from reradiation is shown as a temperature increase above

that which would have been computed in the absence of self-radiation.

(D) Summer day-side temperature distribution as seen from New Horizons during LORRI observation CA06 (3). (E) Winter night-side temperature distribution as seen from New Horizons during the REX CA08 scan. In all panels, the x, y, and z axes correspond to the principal axes of inertia with the origin at the center of mass (13).

portions. Simulations of protoplanetary disks indicate that methanol can be produced in this way (consuming CO) on time scales of  $\sim 1$  million years at Arrokoth's distance from the Sun (61). Intermediate steps include formation of formaldehyde ( $H_2CO$ ) and radicals (e.g.,  $CH_3O$ ). Radiolytic destruction of  $CH_3OH$  can produce  $H_2CO$ , but the band at  $2.27 \mu m$  remains prominent even after irradiation (62).

Another potential  $CH_3OH$  formation mechanism involves radiolysis of mixed  $H_2O$  and  $CH_4$  ices (63–66). Again, low temperatures consistent with the shaded midplane are required for  $CH_4$  to be frozen onto grains, although  $CH_4$  is not quite as volatile as CO. If such radiolytic production occurs with an excess of  $CH_4$ , the  $H_2O$  could be consumed, providing a possible explanation for the lack of evidence for  $H_2O$  at Arrokoth. Such a radiolytic process would also efficiently form simple hydrocarbons such as  $C_2H_4$  and  $C_2H_6$ ,

which are known to be precursors of complex organic tholins [e.g., (20, 67)].

Gas-phase methanol has been detected at low abundance in protoplanetary disks around nearby stars (68). This is consistent with methanol ice formation on grain surfaces, with a small fraction subsequently released to the gas through nonthermal desorption mechanisms [e.g., (60, 69)]. This would also be consistent with the observation that many of these disks are also depleted in gaseous CO (70, 71), requiring a combination of sequestration on pebbles and chemical processing (61, 72, 73).

Although  $H_2O$  was not detected on Arrokoth, it could be present but somehow masked or hidden from view, such as by materials produced through radiolysis or photolysis of  $CH_3OH$  ice and perhaps other undetected precursor materials. Preferential removal of  $H_2O$  ice from the uppermost surface by a process such as

sputtering is another possibility, although it is unclear that  $H_2O$  should be more susceptible to such removal than  $CH_3OH$  is. Spectra of some larger KBOs also lack  $H_2O$  absorption features (46, 47).  $H_2O$  ice absorption is considerably weaker in the spectrum of Arrokoth than seen on Pholus and (55638) 2002 VE<sub>95</sub>, the two other objects with strong  $CH_3OH$  signatures, but those objects are much larger than Arrokoth (74, 75). They likely formed in the closer, more densely populated planetesimal disk originally inside 30 AU, as did other, large KBOs where strong  $H_2O$  ice signatures have been detected spectroscopically. It is hard to envision a mechanism that preferentially masks or removes  $H_2O$  from the surface of Arrokoth but not the  $H_2O$  on these other objects. Their contrasting compositions suggest that the observed surface composition of these bodies is reflective of their bulk compositions, and that Arrokoth's composition is



distinct from those of planetesimals that formed closer to the Sun. A contrast in planetesimal composition driven by nebular chemistry enabled by CO and/or CH<sub>4</sub> frozen on grains may be connected to the transition at 30 AU that halted Neptune's outward migration at that distance.

Although regional variations in tholin and ice abundance could cause albedo, color, and spectral variations, the subtle variations that are seen at Arrokoth do not require compositional differences. Reflectance also depends on mechanical properties such as particle size distribution and degree of compaction (37). The merger of the two lobes (13) could have mechanically modified the material in the neck region. After the formation of Arrokoth from the nebula, low-speed impacts of residual debris could locally modify surface textures, which might account for some of the spots with slightly contrasting colors and albedos.

### Surface and interior evolution

The surface features of comets are dominated by geologically rapid volatile loss and sublimation erosion, whereas the surfaces of larger asteroids are dominated by high-energy impacts. In contrast, Arrokoth and the CCKBOs are distinct in inhabiting an environment with very little energy input from interstellar, solar, and micrometeorite sources that require long time scales to modify the surface. Depending on the thermal parameters, surface temperatures range from as low as 10 to 20 K in winter to 50 to 60 K in summer, with the neck region getting at most a few degrees warmer because of self-radiation. Summer surface temperatures are warm enough to drive off volatiles such as CO, CH<sub>4</sub>, and N<sub>2</sub>, but are not warm enough to crystallize amorphous H<sub>2</sub>O ice or to sublimate it. We therefore expect little thermally driven evolution of the surface, except early in Arrokoth's history when the volatile ices would have been lost soon after nebular dust cleared, allowing sunlight to illuminate the surface. Galactic and solar energetic photons and charged particles can break bonds and drive chemical reactions that produce refractory macromolecular tholins (19, 24, 25). Photolysis and radiolysis of solid methanol also produce formaldehyde, which may subsequently polymerize (76, 77). Although formaldehyde polymer (paraformaldehyde) shows some spectral structure in the 2- to 2.5- $\mu$ m region, it does not match the bands seen in Pholus (33) or Arrokoth. Macromolecular tholins seen on Arrokoth's surface could derive from three potential sources: (i) They could have originated in the pre-solar gas and dust cloud. (ii) They could arise from photolysis and radiolysis of hydrocarbons and associated nitrogen- and oxygen-bearing components in the nebula, especially where material is transported to regions near the surface of the nebula

exposed to radiation from the forming Sun or other astrophysical sources (56). (iii) Radiolysis and photolysis of Arrokoth's surface components could produce tholins, as discussed above. All these sources likely contributed to Arrokoth's inventory of complex organics, with the products of the first two mechanisms being distributed throughout the body, whereas the products of the third mechanism should only occur at the surface. The flux of Solar System and interstellar micrometeorites at Arrokoth's location is highly uncertain (78, 79), but such bombardment could produce up to several meters of mechanical erosion over the age of the Solar System (80, 81). If this erosion operates faster than space weathering by energetic radiation, the visible surface could be representative of the deep interior. If it is slower, the surface should accumulate a lag deposit enriched in more refractory materials through loss or destruction of more volatile and fragile molecules.

It is not obvious from the encounter data whether a distinct surface veneer exists on Arrokoth. Albedo and color contrasts corresponding to ancient features such as the neck suggest that such contrasts are not quickly masked by a space weathering processes. If compositionally distinct interior material was exposed at the neck, it might weather differently and thus maintain a contrasting appearance, but the LEISA data show no evidence for a distinct composition in the neck region. The warmer thermal environment of the neck would be another potential reason for distinct evolution there, but the temperature difference is too small to produce outcomes that differ substantially from the rest of the surface. No obviously fresh craters expose distinct-looking interior material (with the possible exception of Maryland), and color trends do not appear to correspond to downslope transport, which is generally from equators to the poles of the lobes, and ultimately to the neck (3). Less-altered interior material should be preferentially exposed at high elevations, but we do not see obvious color differences in high-standing regions along the equators. Brighter material in the neck and in Maryland may accumulate in topographic lows, suggestive of textural rather than compositional contrasts. Among the CCKBO population, the diversity of colors coupled with similar colors of different sized components of binaries have been used to argue against the importance of size-dependent factors such as the balance between erosion and space weathering in altering their surface colors (82).

The evolution of Arrokoth's interior is shaped by energy inputs that are even smaller than at its surface. Subsequent to the loss of shading from nebular dust, insolation would have raised Arrokoth's equilibrium temperature. As that thermal wave slowly propagated inward,

highly volatile species such as N<sub>2</sub>, CO, and CH<sub>4</sub> would have become unstable, at least as condensed ices. Early outgassing of these species may have produced what appear to be collapse or outgassing pits at the boundaries of terrain units (1, 3). Such features may be analogous to pits or sinkholes on comet 67P/Churyumov-Gerasimenko [e.g., (83, 84)]. Localization of the pits to certain regions may arise from variable permeability of surface deposits that would favor volatiles escaping through weaker zones at unit boundaries. However, the equilibrium temperature in Arrokoth's interior would never have been high enough for amorphous ice to crystallize and expel its payload of trapped volatiles [e.g., (85, 86)]. Apart from loss of these volatile species, Arrokoth's interior may have undergone little alteration or processing since accretion, and could thus preserve many characteristics of the original accretion such as layering [as observed on comets (87, 88)], very high porosity, and an intimate mixture of nebular ices, organics, and silicate dust grains.

### REFERENCES AND NOTES

1. S. A. Stern *et al.*, Initial results from the New Horizons exploration of 2014 MU<sub>69</sub>, a small Kuiper Belt object. *Science* **364**, eaaw9771 (2019). doi: [10.1126/science.aaw9771](https://doi.org/10.1126/science.aaw9771); pmid: [31097641](https://pubmed.ncbi.nlm.nih.gov/31097641/)
2. S. B. Porter *et al.*, High-precision orbit fitting and uncertainty analysis of (486958) 2014 MU<sub>69</sub>. *Astron. J.* **156**, 20 (2018). doi: [10.3847/1538-3831/aac2e1](https://doi.org/10.3847/1538-3831/aac2e1)
3. J. R. Spencer *et al.*, The geology and geophysics of Kuiper Belt object (486958) Arrokoth. *Science* **367**, 10.1126/science.aay3999 (2020).
4. J.-M. Petit *et al.*, The Canada-France Ecliptic Plane Survey - full data release: The orbital structure of the Kuiper belt. *Astron. J.* **142**, 131 (2011). doi: [10.1088/0004-6256/142/4/131](https://doi.org/10.1088/0004-6256/142/4/131)
5. H. F. Levison, A. Morbidelli, C. Van Laerhoven, R. Gomes, K. Tsiganis, Origin of the structure of the Kuiper belt during a dynamical instability in the orbits of Uranus and Neptune. *Icarus* **196**, 258–273 (2008). doi: [10.1016/j.icarus.2007.11.035](https://doi.org/10.1016/j.icarus.2007.11.035)
6. K. S. Noll, W. M. Grundy, D. C. Stephens, H. F. Levison, S. D. Kern, Evidence for two populations of classical transneptunian objects: The strong inclination dependence of classical binaries. *Icarus* **194**, 758–768 (2008). doi: [10.1016/j.icarus.2007.10.022](https://doi.org/10.1016/j.icarus.2007.10.022)
7. S. C. Tegler, W. Romanishin, Extremely red Kuiper-belt objects in near-circular orbits beyond 40 AU. *Nature* **407**, 979–981 (2000). doi: [10.1038/35039572](https://doi.org/10.1038/35039572); pmid: [11069171](https://pubmed.ncbi.nlm.nih.gov/11069171/)
8. R. E. Pike *et al.*, Col-OSSOS: Z-band photometry reveals three distinct TNO surface types. *Astron. J.* **154**, 101 (2017). doi: [10.3847/1538-3831/aa83b1](https://doi.org/10.3847/1538-3831/aa83b1)
9. H. F. Levison, S. A. Stern, On the size dependence of the inclination distribution of the main Kuiper Belt. *Astron. J.* **121**, 1730–1735 (2001). doi: [10.1086/319420](https://doi.org/10.1086/319420)
10. M. E. Schwamb, M. E. Brown, W. C. Fraser, The small numbers of large Kuiper belt objects. *Astron. J.* **147**, 2 (2014). doi: [10.1088/0004-6256/147/1/2](https://doi.org/10.1088/0004-6256/147/1/2)
11. M. J. Brucker *et al.*, High albedos of low inclination Classical Kuiper belt objects. *Icarus* **201**, 284–294 (2009). doi: [10.1016/j.icarus.2008.12.040](https://doi.org/10.1016/j.icarus.2008.12.040)
12. E. Vilenius *et al.*, "TNOs are Cool": A survey of the trans-neptunian region X. Analysis of classical Kuiper belt objects from Herschel and Spitzer observations. *Astron. Astrophys.* **564**, A35 (2014). doi: [10.1051/0004-6361/201322416](https://doi.org/10.1051/0004-6361/201322416)
13. W. B. McKinnon *et al.*, The solar nebula origin of (486958) Arrokoth, a primordial contact binary in the Kuiper Belt. *Science* **367**, 10.1126/science.aay6620 (2020).
14. D. C. Reuter *et al.*, Ralph: A visible/infrared imager for the New Horizons Pluto/Kuiper belt mission. *Space Sci. Rev.* **140**, 129–154 (2008). doi: [10.1007/s11214-008-9375-7](https://doi.org/10.1007/s11214-008-9375-7)
15. See supplementary materials.
16. A. F. Cheng *et al.*, Long-Range Reconnaissance Imager on New Horizons. *Space Sci. Rev.* **140**, 189–215 (2008). doi: [10.1007/s11214-007-9271-6](https://doi.org/10.1007/s11214-007-9271-6)

17. G. L. Tyler *et al.*, The New Horizons radio science experiment (REX). *Space Sci. Rev.* **140**, 217–259 (2008). doi: [10.1007/s1214-007-9302-3](https://doi.org/10.1007/s1214-007-9302-3)
18. O. R. Hainaut, A. C. Delsanti, Colors of minor bodies in the outer Solar System: A statistical analysis. *Astron. Astrophys.* **389**, 641–664 (2002). doi: [10.1051/0004-6361/20020431](https://doi.org/10.1051/0004-6361/20020431)
19. D. P. Cruikshank, H. Imanaka, C. M. Dalle Ore, Tholins as coloring agents on outer Solar System bodies. *Adv. Space Res.* **36**, 178–183 (2005). doi: [10.1016/j.asr.2005.07.026](https://doi.org/10.1016/j.asr.2005.07.026)
20. B. N. Khare *et al.*, Optical constants of organic tholins produced in a simulated Titanian atmosphere: From soft X-ray to microwave frequencies. *Icarus* **60**, 127–134 (1984). doi: [10.1016/0019-1035\(84\)90142-8](https://doi.org/10.1016/0019-1035(84)90142-8)
21. B. N. Khare *et al.*, Production and optical constants of ice tholin from charged particle irradiation of (1:6) C<sub>2</sub>H<sub>6</sub>/H<sub>2</sub>O at 77 K. *Icarus* **103**, 290–300 (1993). doi: [10.1006/icar.1993.1071](https://doi.org/10.1006/icar.1993.1071)
22. B. N. Khare *et al.*, Optical constants of Triton tholin: Preliminary results. *Bull. Am. Astron. Soc.* **26**, 1176–1177 (1994).
23. H. Imanaka *et al.*, Laboratory experiments of Titan tholin formed in cold plasma at various pressures: Implications for nitrogen-containing polycyclic aromatic compounds in Titan haze. *Icarus* **168**, 344–366 (2004). doi: [10.1016/j.icarus.2003.12.014](https://doi.org/10.1016/j.icarus.2003.12.014)
24. C. K. Materese *et al.*, Ice chemistry on outer Solar System bodies: Carboxylic acids, nitriles, and urea detected in refractory residues produced from the UV photolysis of N<sub>2</sub>:CH<sub>4</sub>:CO-containing ices. *Astrophys. J.* **788**, 111 (2014). doi: [10.1088/0004-637X/788/2/111](https://doi.org/10.1088/0004-637X/788/2/111)
25. C. K. Materese, D. P. Cruikshank, S. A. Sandford, H. Imanaka, M. Nuevo, Ice chemistry on outer Solar System bodies: Electron radiolysis of N<sub>2</sub>, CH<sub>4</sub>, and CO-containing ices. *Astrophys. J.* **812**, 150 (2015). doi: [10.1088/0004-637X/812/2/150](https://doi.org/10.1088/0004-637X/812/2/150)
26. N. Peixinho, A. Delsanti, A. Guilbert-Lepoutre, R. Gafeira, P. Lacerda, The bimodal colors of Centaurs and small Kuiper belt objects. *Astron. Astrophys.* **546**, A86 (2012). doi: [10.1051/0004-6361/201219057](https://doi.org/10.1051/0004-6361/201219057)
27. F. E. DeMeo, B. Carry, The taxonomic distribution of asteroids from multi-filter all-sky photometric surveys. *Icarus* **226**, 723–741 (2013). doi: [10.1016/j.icarus.2013.06.027](https://doi.org/10.1016/j.icarus.2013.06.027)
28. G. M. Szabó, Z. Ivezić, M. Jurić, R. Lupton, The properties of jovian Trojan asteroids listed in SDSS Moving Object Catalogue 3. *Mon. Not. R. Astron. Soc.* **377**, 1393–1406 (2007). doi: [10.1111/j.1365-2966.2007.11687.x](https://doi.org/10.1111/j.1365-2966.2007.11687.x)
29. W. C. Fraser, M. E. Brown, The Hubble Wide Field Camera 3 test of surfaces in the outer Solar System: The compositional classes of the Kuiper belt. *Astrophys. J.* **749**, 33 (2012). doi: [10.1088/0004-637X/749/1/33](https://doi.org/10.1088/0004-637X/749/1/33)
30. B. Schmitt *et al.*, Physical state and distribution of materials at the surface of Pluto from New Horizons LEISA imaging spectrometer. *Icarus* **287**, 229–260 (2017). doi: [10.1016/j.icarus.2016.12.025](https://doi.org/10.1016/j.icarus.2016.12.025)
31. B. Hapke, *Theory of Reflectance and Emission Spectroscopy* (Cambridge Univ. Press, ed. 2, 2012).
32. S. A. Sandford, L. J. Allamandola, Condensation and vaporization studies of CH<sub>3</sub>OH and NH<sub>3</sub> ices: Major implications for astrochemistry. *Astrophys. J.* **417**, 815–825 (1993). doi: [10.1086/173362](https://doi.org/10.1086/173362); pmid: [11540092](https://pubmed.ncbi.nlm.nih.gov/11540092/)
33. D. P. Cruikshank *et al.*, The composition of Centaur 5145 Pholus. *Icarus* **135**, 389–407 (1998). doi: [10.1006/icar.1998.5997](https://doi.org/10.1006/icar.1998.5997)
34. M. A. Barucci, F. Merlin, E. Dotto, A. Doressoundiram, C. de Bergh, TNO surface ices: Observations of the TNO 55638 (2002 VE<sub>69</sub>) and analysis of the population's spectral properties. *Astron. Astrophys.* **455**, 725–730 (2006). doi: [10.1051/0004-6361/20064951](https://doi.org/10.1051/0004-6361/20064951)
35. H. Zheng *et al.*, An improved model of diffuse galactic radio emission from 10 MHz to 5 THz. *Mon. Not. R. Astron. Soc.* **464**, 3486–3497 (2017). doi: [10.1093/mnras/stw2525](https://doi.org/10.1093/mnras/stw2525)
36. M. K. Bird *et al.*, Radio thermal emission from Pluto and Charon during the New Horizons encounter. *Icarus* **322**, 192–209 (2019). doi: [10.1016/j.icarus.2019.01.004](https://doi.org/10.1016/j.icarus.2019.01.004)
37. I. R. Linscott *et al.*, Radiometer Calibration at 4.2 cm on New Horizons. Stanford Radioscience Report No. 17-06-0 (2017); [https://sbn.astro.umd.edu/holdings/nh-jr-x-2-jupiter-v2.0/document/nh\\_rex\\_radiometer\\_calib\\_v4p7.pdf](https://sbn.astro.umd.edu/holdings/nh-jr-x-2-jupiter-v2.0/document/nh_rex_radiometer_calib_v4p7.pdf).
38. D. Vokrouhlický, W. F. Bottke, S. R. Chesley, D. J. Scheeres, T. S. Statler, in *Asteroids IV*, P. Michel, F. E. DeMeo, W. F. Bottke, Eds. (Univ. of Arizona Press, 2015), pp. 509–531.
39. O. L. White, O. M. Umurhan, J. W. Moore, A. D. Howard, Modeling of ice pinnacle formation on Callisto. *J. Geophys. Res.* **121**, 21–45 (2016). doi: [10.1002/2015JE004846](https://doi.org/10.1002/2015JE004846)
40. E. Lellouch *et al.*, “TNOs are Cool”: A survey of the trans-neptunian region IX. Thermal properties of Kuiper belt objects and Centaurs from combined Herschel and Spitzer observations. *Astron. Astrophys.* **557**, A60 (2013). doi: [10.1051/0004-6361/201322047](https://doi.org/10.1051/0004-6361/201322047)
41. M. Pätzold *et al.*, A homogeneous nucleus for comet 67P/Churyumov-Gerasimenko from its gravity field. *Nature* **530**, 63–65 (2016). doi: [10.1038/nature16535](https://doi.org/10.1038/nature16535); pmid: [26842054](https://pubmed.ncbi.nlm.nih.gov/26842054/)
42. C. J. Bierson, F. Nimmo, Using the density of Kuiper belt objects to constrain their composition and formation history. *Icarus* **326**, 10–17 (2019). doi: [10.1016/j.icarus.2019.01.027](https://doi.org/10.1016/j.icarus.2019.01.027)
43. J. R. Spencer, A rough-surface thermophysical model for airless planets. *Icarus* **83**, 27–38 (1990). doi: [10.1016/0019-1035\(90\)90004-S](https://doi.org/10.1016/0019-1035(90)90004-S)
44. R. S. Gomes, A. Morbidelli, H. F. Levison, Planetary migration in a planetesimal disk: Why did Neptune stop at 30 au. *Icarus* **170**, 492–507 (2004). doi: [10.1016/j.icarus.2004.03.011](https://doi.org/10.1016/j.icarus.2004.03.011)
45. A. Shannon, Y. Wu, Y. Lithwick, Forming the cold classical Kuiper belt in a light disk. *Astrophys. J.* **818**, 175 (2016). doi: [10.3847/0004-637X/818/2/175](https://doi.org/10.3847/0004-637X/818/2/175)
46. K. M. Barkume, M. E. Brown, E. L. Schaller, Near-infrared spectra of Centaurs and Kuiper belt objects. *Astron. J.* **135**, 55–67 (2008). doi: [10.1088/0004-6256/135/1/55](https://doi.org/10.1088/0004-6256/135/1/55)
47. M. A. Barucci *et al.*, New insights on ices in Centaur and transneptunian populations. *Icarus* **214**, 297–307 (2011). doi: [10.1016/j.icarus.2011.04.019](https://doi.org/10.1016/j.icarus.2011.04.019)
48. D. Nesvorný, R. Li, A. Youdin, J. B. Simon, W. M. Grundy, Trans-Neptunian binaries as evidence for planetesimal formation by the streaming instability. *Nat. Astron.* **3**, 808–812 (2019). doi: [10.1016/j.nature.2011.04.019](https://doi.org/10.1016/j.nature.2011.04.019)
49. C. Dominik, A. G. G. M. Tielens, The physics of dust coagulation and the structure of dust aggregates in space. *Astrophys. J.* **480**, 647–673 (1997). doi: [10.1086/303996](https://doi.org/10.1086/303996)
50. J. Blum, G. Wurm, The growth mechanisms of macroscopic bodies in protoplanetary disks. *Annu. Rev. Astron. Astrophys.* **46**, 21–56 (2008). doi: [10.1146/annurev.astro.46.060407.145152](https://doi.org/10.1146/annurev.astro.46.060407.145152)
51. A. N. Youdin, J. Goodman, Streaming instabilities in protoplanetary disks. *Astrophys. J.* **620**, 459–469 (2005). doi: [10.1086/426895](https://doi.org/10.1086/426895)
52. A. Johansen *et al.*, Rapid planetesimal formation in turbulent circumstellar disks. *Nature* **448**, 1022–1025 (2007). doi: [10.1038/nature06086](https://doi.org/10.1038/nature06086); pmid: [17728751](https://pubmed.ncbi.nlm.nih.gov/17728751/)
53. S. J. Weidenschilling, Aerodynamics of solid bodies in the solar nebula. *Mon. Not. R. Astron. Soc.* **180**, 57–70 (1977). doi: [10.1093/mnras/180.2.57](https://doi.org/10.1093/mnras/180.2.57)
54. M. N. Drozdovskaya *et al.*, Cometary ices in forming protoplanetary disc midplanes. *Mon. Not. R. Astron. Soc.* **462**, 977–993 (2016). doi: [10.1093/mnras/stw1632](https://doi.org/10.1093/mnras/stw1632)
55. T. Henning, D. Semenov, Chemistry in protoplanetary disks. *Chem. Rev.* **113**, 9016–9042 (2013). doi: [10.1021/cr400128p](https://doi.org/10.1021/cr400128p); pmid: [24191756](https://pubmed.ncbi.nlm.nih.gov/24191756/)
56. F. J. Ciesla, S. A. Sandford, Organic synthesis via irradiation and warming of ice grains in the solar nebula. *Science* **336**, 452–454 (2012). doi: [10.1126/science.1217291](https://doi.org/10.1126/science.1217291); pmid: [22461502](https://pubmed.ncbi.nlm.nih.gov/22461502/)
57. K. I. Öberg, R. Murray-Clay, E. A. Bergin, The effect of snowlines on C/O in planetary atmospheres. *Astrophys. J.* **743**, L16 (2011). doi: [10.1088/2041-8205/743/1/L16](https://doi.org/10.1088/2041-8205/743/1/L16)
58. A. G. G. M. Tielens, W. Hagen, Model calculations of the molecular composition of interstellar grain mantles. *Astron. Astrophys.* **114**, 245–260 (1982).
59. H. M. Cuppen, E. F. van Dishoeck, E. Herbst, A. G. G. M. Tielens, Microscopic simulation of methanol and formaldehyde ice formation in cold dense cores. *Astron. Astrophys.* **508**, 275–287 (2009). doi: [10.1051/0004-6361/200913119](https://doi.org/10.1051/0004-6361/200913119)
60. M. Ruaud, U. Gorti, A three-phase approach to grain surface chemistry in protoplanetary disks: Gas, ice surfaces, and ice mantles of dust grains. *Astrophys. J.* **885**, 146 (2019). doi: [10.3847/1538-4357/ab4996](https://doi.org/10.3847/1538-4357/ab4996)
61. A. D. Bosman, C. Walsh, E. F. van Dishoeck, CO destruction in protoplanetary disk midplanes: Inside versus outside the CO snow surface. *Astron. Astrophys.* **618**, A182 (2018). doi: [10.1051/0004-6361/201833497](https://doi.org/10.1051/0004-6361/201833497)
62. R. Brunetto, G. A. Baratta, M. Domingo, G. Strazzulla, Reflectance and transmittance spectra (2.2–2.4 μm) of ion irradiated methanol. *Icarus* **175**, 226–232 (2005). doi: [10.1016/j.icarus.2004.10.011](https://doi.org/10.1016/j.icarus.2004.10.011)
63. M. H. Moore, R. L. Hudson, Infrared study of ion-irradiated water-ice mixtures with hydrocarbons relevant to comets. *Icarus* **135**, 518–527 (1998). doi: [10.1006/icar.1998.5996](https://doi.org/10.1006/icar.1998.5996)
64. A. Wada, N. Mochizuki, K. Hiraoka, Methanol formation from electron-irradiated mixed H<sub>2</sub>O/CH<sub>4</sub> ice at 10 K. *Astrophys. J.* **644**, 300–306 (2006). doi: [10.1086/503380](https://doi.org/10.1086/503380)
65. R. Hodyss, P. V. Johnson, J. V. Stern, J. D. Goguen, I. Kanik, Photochemistry of methane-water ices. *Icarus* **200**, 338–342 (2009). doi: [10.1016/j.icarus.2008.10.024](https://doi.org/10.1016/j.icarus.2008.10.024)
66. M. P. Pearce *et al.*, Formation of methanol from methane and water in an electrical discharge. *Phys. Chem. Chem. Phys.* **14**, 3444–3449 (2012). doi: [10.1039/c2cp22135g](https://doi.org/10.1039/c2cp22135g); pmid: [22307542](https://pubmed.ncbi.nlm.nih.gov/22307542/)
67. G. D. McDonald *et al.*, Production and chemical analysis of cometary ice tholins. *Icarus* **122**, 107–117 (1996). doi: [10.1006/icar.1996.0112](https://doi.org/10.1006/icar.1996.0112)
68. C. Walsh *et al.*, First detection of gas-phase methanol in a protoplanetary disk. *Astrophys. J.* **823**, L10 (2016). doi: [10.3847/2041-8205/823/1/L10](https://doi.org/10.3847/2041-8205/823/1/L10)
69. C. Walsh, S. Vissaropraga, H. McGee, in *Astrochemistry VII - Through the Cosmos from Galaxies to Planets*, Proceedings IAU Symposium No. 332, M. Cunningham, T. Millar, Y. Aikawa, Eds. (International Astronomical Union, 2018), pp. 395–402.
70. E. A. Bergin *et al.*, An old disk still capable of forming a planetary system. *Nature* **493**, 644–646 (2013). doi: [10.1038/nature11805](https://doi.org/10.1038/nature11805); pmid: [23364742](https://pubmed.ncbi.nlm.nih.gov/23364742/)
71. M. K. McClure *et al.*, Mass measurements in protoplanetary disks from hydrogen deuteride. *Astrophys. J.* **831**, 167 (2016). doi: [10.3847/0004-637X/831/2/167](https://doi.org/10.3847/0004-637X/831/2/167)
72. S. Krijt, K. R. Schwarz, E. A. Bergin, F. J. Ciesla, Transport of CO in protoplanetary disks: Consequences of pebble formation, settling, and radial drift. *Astrophys. J.* **864**, 78 (2018). doi: [10.3847/1538-4357/aad69b](https://doi.org/10.3847/1538-4357/aad69b)
73. K. Zhang, E. A. Bergin, K. Schwarz, S. Krijt, F. Ciesla, Systematic variations of CO gas abundance with radius in gas-rich protoplanetary disks. *Astrophys. J.* **883**, 98 (2019). doi: [10.3847/1538-4357/ab38b9](https://doi.org/10.3847/1538-4357/ab38b9)
74. S. C. Tegler *et al.*, The period of rotation, shape, density, and homogeneous surface color of the Centaur 5145 Pholus. *Icarus* **175**, 390–396 (2005). doi: [10.1016/j.icarus.2004.12.011](https://doi.org/10.1016/j.icarus.2004.12.011)
75. M. A. Barucci *et al.*, The extra red plutino (55638) 2002 VE<sub>95</sub>. *Astron. Astrophys.* **539**, A152 (2012). doi: [10.1051/0004-6361/201118505](https://doi.org/10.1051/0004-6361/201118505)
76. M. P. Bernstein, S. A. Sandford, L. J. Allamandola, S. Chang, M. A. Scharberg, Organic compounds produced by photolysis of realistic interstellar and cometary ice analogs containing methanol. *Astrophys. J.* **454**, 327–344 (1995). doi: [10.1086/176485](https://doi.org/10.1086/176485)
77. T. Butscher *et al.*, Radical-assisted polymerization in interstellar ice analogues: Formyl radical and polyoxymethylene. *Mon. Not. R. Astron. Soc.* **486**, 1953–1963 (2019). doi: [10.1093/mnras/stz879](https://doi.org/10.1093/mnras/stz879)
78. M. Piquette *et al.*, Student Dust Counter: Status report at 38 au. *Icarus* **321**, 116–125 (2019). doi: [10.1016/j.icarus.2018.11.012](https://doi.org/10.1016/j.icarus.2018.11.012)
79. A. R. Poppe *et al.*, Constraining the Solar System's debris disk with in situ New Horizons measurements from the Edgeworth-Kuiper belt. *Astrophys. J.* **881**, L12 (2019). doi: [10.3847/2041-8213/ab322a](https://doi.org/10.3847/2041-8213/ab322a)
80. S. A. Stern, ISM-induced erosion and gas-dynamical drag in the Oort cloud. *Icarus* **84**, 447–466 (1990). doi: [10.1016/0019-1035\(90\)90048-E](https://doi.org/10.1016/0019-1035(90)90048-E)
81. S. A. Stern, The evolution of comets in the Oort cloud and Kuiper belt. *Nature* **424**, 639–642 (2003). doi: [10.1038/nature01725](https://doi.org/10.1038/nature01725); pmid: [12904784](https://pubmed.ncbi.nlm.nih.gov/12904784/)
82. S. D. Benecchi *et al.*, The correlated colors of transneptunian binaries. *Icarus* **200**, 292–303 (2009). doi: [10.1016/j.icarus.2008.10.025](https://doi.org/10.1016/j.icarus.2008.10.025)
83. O. Mousis *et al.*, Pits formation from volatile outgassing on 67P/Churyumov-Gerasimenko. *Astrophys. J.* **814**, L5 (2015). doi: [10.1088/2041-8205/814/1/L5](https://doi.org/10.1088/2041-8205/814/1/L5)
84. J. B. Vincent *et al.*, Large heterogeneities in comet 67P as revealed by active pits from sinkhole collapse. *Nature* **523**, 63–66 (2015). doi: [10.1038/nature14564](https://doi.org/10.1038/nature14564); pmid: [26135448](https://pubmed.ncbi.nlm.nih.gov/26135448/)
85. P. Ayotte *et al.*, Effect of porosity on the adsorption, desorption, trapping, and release of volatile gases by amorphous solid water. *J. Geophys. Res.* **106**, 33387–33392 (2001). doi: [10.1029/2000JE001362](https://doi.org/10.1029/2000JE001362)
86. A. Bar-Nun, G. Notesco, T. Owen, Trapping of N<sub>2</sub>, CO and Ar in amorphous ice: Application to comets. *Icarus* **190**, 655–659 (2007). doi: [10.1016/j.icarus.2007.03.021](https://doi.org/10.1016/j.icarus.2007.03.021)
87. M. Massironi *et al.*, Two independent and primitive envelopes of the bilobate nucleus of comet 67P. *Nature* **526**, 402–405 (2015). doi: [10.1038/nature15511](https://doi.org/10.1038/nature15511); pmid: [26416730](https://pubmed.ncbi.nlm.nih.gov/26416730/)
88. L. Penasa *et al.*, A three-dimensional modelling of the layered structure of comet 67P/Churyumov-Gerasimenko. *Mon. Not. R. Astron. Soc.* **469** (suppl. 2), S741–S754 (2017). doi: [10.1093/mnras/stx2899](https://doi.org/10.1093/mnras/stx2899)

**ACKNOWLEDGMENTS**

We gratefully thank the many hundreds of people who worked together on the New Horizons team. Their hard work enabled the encounter. **Funding:** Supported by NASA's New Horizons project via contracts NASW-02008 and NAS5-97271/TaskOrder30; the National Research Council of Canada (J.J.K.); a Hubble Fellowship, program number HST-HF2-51394.002 provided by NASA through a grant from the Space Telescope Science Institute, which is operated by the Association of Universities for Research in Astronomy Inc. under NASA contract NAS5-26555 (S.K.); the NASA Astrobiology Institute under Cooperative Agreement Notice NNN13ZDA017C issued through the Science Mission Directorate (M.R.); the French Centre National d'Etudes Spatiales (CNES) (B.S., L.G., and E.Q.); and NASA Astrophysics Theory Program Grant NNX17AK59G (O.M.U.). **Author contributions:** W.M.G. led authorship of the manuscript. W.M.G., C.J.A.H., C.B.O., A.H.P., and S.P. analyzed the MVIC color data and wrote that section. W.M.G., A.H.P., S.P., J.C.C., and D.P.C. analyzed the LEISA spectral data

and wrote that section. M.K.B. and I.R.L. analyzed the REX data and wrote that section. O.M.U. did the thermal modeling and wrote that section, with input from W.M.G., C.J.A.H., and L.A.Y. W.M.G., D.P.C., D.T.B., S.K., and M.R. wrote the implications section. C.M.D.O., J.J.K., J.T.K., Y.J.P., S.B.P., F.S., J.R.S., S.A.S., A.J.V., and H.A.W. contributed to data analysis and development of scientific ideas. All authors played roles in experimental design and/or provided feedback and insights on drafts of the manuscript.

**Competing interests:** We declare no competing interests. **Data and materials availability:** All images, spacecraft data, and the shape model used in this paper are available at <https://doi.org/10.6084/m9.figshare.c.4819110> and at <https://doi.org/10.6084/m9.figshare.11485443>. The three Charon observations used in flat-fielding the LEISA data are available at [https://pds-smallbodies.astro.umd.edu/holdings/nh-p-leisa-3-pluto-v3.0/data/20150714\\_029914/l\\_sb\\_0299146219\\_0x54b\\_sci.fit](https://pds-smallbodies.astro.umd.edu/holdings/nh-p-leisa-3-pluto-v3.0/data/20150714_029914/l_sb_0299146219_0x54b_sci.fit), [https://pds-smallbodies.astro.umd.edu/holdings/nh-p-leisa-3-pluto-v3.0/data/20150714\\_029917/l\\_sb\\_0299171308\\_0x53c\\_sci.fit](https://pds-smallbodies.astro.umd.edu/holdings/nh-p-leisa-3-pluto-v3.0/data/20150714_029917/l_sb_0299171308_0x53c_sci.fit), and [https://pds-smallbodies.astro.umd.edu/holdings/nh-p-leisa-3-pluto-v3.0/data/20150714\\_029917/l\\_sb\\_0299175509\\_0x53c\\_sci.fit](https://pds-smallbodies.astro.umd.edu/holdings/nh-p-leisa-3-pluto-v3.0/data/20150714_029917/l_sb_0299175509_0x53c_sci.fit). Additional fully calibrated New Horizons data and higher-order data products will be released by the NASA Planetary Data System at [https://pds-smallbodies.astro.umd.edu/data\\_sb/missions/newhorizons/index.shtml](https://pds-smallbodies.astro.umd.edu/data_sb/missions/newhorizons/index.shtml) in a series of stages in 2020 and 2021, due to the time required to fully download and calibrate the data.

[umd.edu/holdings/nh-p-leisa-3-pluto-v3.0/data/20150714\\_029917/l\\_sb\\_0299175509\\_0x53c\\_sci.fit](https://pds-smallbodies.astro.umd.edu/holdings/nh-p-leisa-3-pluto-v3.0/data/20150714_029917/l_sb_0299175509_0x53c_sci.fit). Additional fully calibrated New Horizons data and higher-order data products will be released by the NASA Planetary Data System at [https://pds-smallbodies.astro.umd.edu/data\\_sb/missions/newhorizons/index.shtml](https://pds-smallbodies.astro.umd.edu/data_sb/missions/newhorizons/index.shtml) in a series of stages in 2020 and 2021, due to the time required to fully download and calibrate the data.

**SUPPLEMENTARY MATERIALS**

[science.sciencemag.org/content/367/6481/eaay3705/suppl/DC1](https://science.sciencemag.org/content/367/6481/eaay3705/suppl/DC1)

Materials and Methods

Fig. S1

Data S1

References (89–98)

12 June 2019; accepted 22 January 2020

Published online 13 February 2020

10.1126/science.aay3705

## Color, composition, and thermal environment of Kuiper Belt object (486958) Arrokoth

W. M. Grundy, M. K. Bird, D. T. Britt, J. C. Cook, D. P. Cruikshank, C. J. A. Howett, S. Krijt, I. R. Linscott, C. B. Olkin, A. H. Parker, S. Protopapa, M. Ruard, O. M. Umurhan, L. A. Young, C. M. Dalle Ore, J. J. Kavelaars, J. T. Keane, Y. J. Pendleton, S. B. Porter, F. Scipioni, J. R. Spencer, S. A. Stern, A. J. Verbiscer, H. A. Weaver, R. P. Binzel, M. W. Buie, B. J. Buratti, A. Cheng, A. M. Earle, H. A. Elliott, L. Gabasova, G. R. Gladstone, M. E. Hill, M. Horanyi, D. E. Jennings, A. W. Lunsford, D. J. McComas, W. B. McKinnon, R. L. McNutt Jr., J. M. Moore, J. W. Parker, E. Quirico, D. C. Reuter, P. M. Schenk, B. Schmitt, M. R. Showalter, K. N. Singer, G. E. Weigle II and A. M. Zangari

*Science* **367** (6481), eaay3705.

DOI: 10.1126/science.aay3705 originally published online February 13, 2020

### Examining Arrokoth

The New Horizons spacecraft flew past the Kuiper Belt object (486958) Arrokoth (also known as 2014 MU<sub>69</sub>) in January 2019. Because of the great distance to the outer Solar System and limited bandwidth, it will take until late 2020 to downlink all the spacecraft's observations back to Earth. Three papers in this issue analyze recently downlinked data, including the highest-resolution images taken during the encounter (see the Perspective by Jewitt). Spencer *et al.* examined Arrokoth's geology and geophysics using stereo imaging, dated the surface using impact craters, and produced a geomorphological map. Grundy *et al.* investigated the composition of the surface using color imaging and spectroscopic data and assessed Arrokoth's thermal emission using microwave radiometry. McKinnon *et al.* used simulations to determine how Arrokoth formed: Two gravitationally bound objects gently spiraled together during the formation of the Solar System. Together, these papers determine the age, composition, and formation process of the most pristine object yet visited by a spacecraft.

*Science*, this issue p. eaay3999, p. eaay3705, p. eaay6620; see also p. 980

#### ARTICLE TOOLS

<http://science.sciencemag.org/content/367/6481/eaay3705>

#### SUPPLEMENTARY MATERIALS

<http://science.sciencemag.org/content/suppl/2020/02/12/science.aay3705.DC1>

#### RELATED CONTENT

<http://science.sciencemag.org/content/sci/367/6481/980.full>  
<http://science.sciencemag.org/content/sci/367/6481/eaay6620.full>  
<http://science.sciencemag.org/content/sci/367/6481/eaay3999.full>

#### REFERENCES

This article cites 97 articles, 2 of which you can access for free  
<http://science.sciencemag.org/content/367/6481/eaay3705#BIBL>

Use of this article is subject to the [Terms of Service](#)

---

*Science* (print ISSN 0036-8075; online ISSN 1095-9203) is published by the American Association for the Advancement of Science, 1200 New York Avenue NW, Washington, DC 20005. The title *Science* is a registered trademark of AAAS.

Copyright © 2020 The Authors, some rights reserved; exclusive licensee American Association for the Advancement of Science. No claim to original U.S. Government Works

PERMISSIONS

<http://www.sciencemag.org/help/reprints-and-permissions>

Use of this article is subject to the [Terms of Service](#)

---

*Science* (print ISSN 0036-8075; online ISSN 1095-9203) is published by the American Association for the Advancement of Science, 1200 New York Avenue NW, Washington, DC 20005. The title *Science* is a registered trademark of AAAS.

Copyright © 2020 The Authors, some rights reserved; exclusive licensee American Association for the Advancement of Science. No claim to original U.S. Government Works



## Supplementary Materials for

### **Color, composition, and thermal environment of Kuiper Belt object (486958)**

#### **Arrokoth**

W. M. Grundy\*, M. K. Bird, D. T. Britt, J. C. Cook, D. P. Cruikshank, C. J. A. Howett, S. Krijt, I. R. Linscott, C. B. Olkin, A. H. Parker, S. Protopapa, M. Ruaud, O. M. Umurhan, L. A. Young, C. M. Dalle Ore, J. J. Kavelaars, J. T. Keane, Y. J. Pendleton, S. B. Porter, F. Scipioni, J. R. Spencer, S. A. Stern, A. J. Verbiscer, H. A. Weaver, R. P. Binzel, M. W. Buie, B. J. Buratti, A. Cheng, A. M. Earle, H. A. Elliott, L. Gabasova, G. R. Gladstone, M. E. Hill, M. Horanyi, D. E. Jennings, A. W. Lunsford, D. J. McComas, W. B. McKinnon, R. L. McNutt Jr., J. M. Moore, J. W. Parker, E. Quirico, D. C. Reuter, P. M. Schenk, B. Schmitt, M. R. Showalter, K. N. Singer, G. E. Weigle II, A. M. Zangari

\*Corresponding author. Email: [w.grundy@lowell.edu](mailto:w.grundy@lowell.edu)

Published 13 February 2020 on *Science* First Release  
DOI: 10.1126/science.aay3705

#### **This PDF file includes:**

Materials and Methods

Fig. S1

Caption for data S1

References

#### **Other supplementary material for this manuscript includes:**

Data S1 (.obj file)

## Materials and Methods

### Ralph Instrument Details and Data Processing

The Ralph instrument is a three-mirror anastigmat telescope with a dichroic beamsplitter that feeds two focal planes, making it effectively two instruments in one (14). The MVIC focal plane consists of 6 time delay integration (TDI) charge-coupled device (CCD) arrays and one frame transfer CCD. The TDI detectors have 32 rows to build up the integrated signal as the instrument scans the field of view across the scene. In the cross-track direction, orthogonal to the 32 TDI lines, there are 5000 active pixels. Each pixel subtends 20  $\mu\text{rad}$  for a cross-track field of view of 5.7°. Ralph/MVIC is distinguished from other New Horizons imaging instruments for its wide field of view and color imaging capabilities. Four of the 6 TDI detectors have broadband filters fixed to the detector assembly. The color filters are identified as “BLUE” (400-550 nm), “RED” (540-700 nm), “NIR” (780-975 nm) and “CH4” (860-910 nm). The two Panchromatic TDI detectors cover the wavelength range from 400-975 nm; see (89) for details of system response and calibration. Comparing the observed signal for a well lit portion of Arrokoth to the standard deviation in a sample of blank sky, we estimate the single pixel signal-to-noise ratios to be 60, 175, 148, and 57 in BLUE, RED, NIR, and CH4 filters, respectively. The corresponding 1- $\sigma$  uncertainty in a percent color slope measurement is about  $\pm 0.2$  around the mean slope of 27%. The uncertainty in determination of a mean color slope drops rapidly as multiple pixels are averaged together.

Ralph’s LEISA focal plane consists of a Rockwell Scientific Corporation PICNIC array (a 256 $\times$ 256 pixel HgCdTe device) with two linear variable filters to disperse the light. The larger filter covers wavelengths from 1.25 to 2.5  $\mu\text{m}$  with a resolving power ( $\lambda/\Delta\lambda$ , where  $\lambda$  is the wavelength) of  $\sim 240$ . The smaller filter covers 2.1 to 2.25  $\mu\text{m}$  with a higher resolving power ( $\sim 560$ ). The LEISA detector has a field of view of 0.9° with both axes providing spatial data coupled with spectral dispersion along one axis.

For all the data collecting modes of Ralph (except observing with the panchromatic frame transfer array), the spacecraft scans the Ralph boresight across the target to build up an image or image cube in the case of LEISA. At Arrokoth, our scan rates were slower than previously used at Pluto because of the low light levels at Arrokoth’s extreme distance from the Sun (43 au at the

time of the encounter) and its low albedo. The color scans used a commanded rate of approximately  $800 \mu\text{rad s}^{-1}$  which corresponds to an integration time of 0.8 seconds. The instrument reads the actual scan rate of the spacecraft to set the TDI rate or frame rate for data collection: the actual scan rate is within  $\pm 32 \mu\text{rad s}^{-1}$  of the commanded scan rate. For the LEISA observations, we used a very slow scan rate ( $60 \mu\text{rad s}^{-1}$ ) to maximize the observed signal.

We used three LEISA scans of Charon taken during the Pluto encounter to construct a flat field for LEISA. Charon was used for this purpose because of the lack of spectral diversity across its surface, unlike Pluto. The three highest spatial resolution scans of Charon (90) were used in order to check for consistency. These are identified as C\_LEISA\_HIRES, C\_LEISA\_LORRI and C\_LEISA. In each of these scans, Charon passed through the center of the field-of-view with the C\_LEISA\_HIRES scan subtending the greatest area of the detector. Charon did not completely fill the detector in any of these scans, so there are regions around the frame edges which have not been corrected, but Arrokoth was not imaged in these uncorrected regions.

Using the frame data (spatial vs. spatial-spectral format), a mask was constructed to isolate Charon from the background. The average signal was then calculated for each pixel when it was illuminated by Charon. This produced a  $256 \times 256$  pixel array (with pixels set to zero if never illuminated by Charon) with the mean spectrum of Charon still present. That was removed by robust fitting (i.e., with rejection of outlier points) of a single-order polynomial to each row (wavelength) of the frame. The results from each of the Charon scans were then combined where they overlap. The result is the ratio of the new flat to the old flat with which the Charon data had already been processed by the standard pipeline. After multiplying by the old flat, the new flat was obtained.

To extract the spatially-registered spectra of Arrokoth from the LEISA data frames, a frame-by-frame pointing solution was determined. The changing spacecraft-to-target range during the LEISA scan resulted in a spatial scale that changed from 2.0 to 1.8 km/pixel over the time the scan, with the closer range coinciding with longer wavelengths. The range was taken from predicted SPICE (91) kernels for the observation time of each frame, and used to construct a scaled model image of Arrokoth (two sky-plane circles connected by a rectangular neck). The



focal plane center of figure, mean albedo, and the full width at half maximum of a Gaussian point spread function was varied until the mean squared difference between a given frame and the model was minimized. Parameter optimization was achieved with simplex minimization. The position angle of the neck and two spheres was assumed to be fixed in all frames. In the case where a pointing solution failed (such as when the target was crossing the edge of the focal plane), the position was estimated via linear interpolation from the nearest successful solutions.

Pixel coordinates in each plane were then converted into a physical frame relative to the center of figure using the range prediction. The ( $\Delta x$  (km),  $\Delta y$  (km),  $\lambda$  ( $\mu\text{m}$ )) coordinates of each pixel were stored, where  $\Delta x$  and  $\Delta y$  are distance from the center of figure along the axes of the detector array, along with the I/F measured by that pixel. A mask of hot pixels and cosmic rays was applied at this stage, and flagged pixels were removed from this data structure. A nearest-neighbor interpolant was constructed to interpolate these I/F measurements over these coordinates. The final spectral cube was constructed by constructing a ( $\Delta x$ ,  $\Delta y$ , I/F) plane from this interpolant sampled over a spatially-uniform grid sampled at 10 times the average native spatial resolution at each unique wavelength sampled by the measurements.

## Spectral Modeling

Multiple scattering of incident sunlight by a granular surface as a function of composition and texture was simulated using a Hapke model (31, 92). This model was numerically inverted to obtain the best-fitting representations of surface composition and texture, given a set of assumed ingredients and parameters. Because there is an infinite set of potential ingredients and parameters, the resulting best-fitting representations are necessarily not unique solutions, though they can demonstrate that a particular configuration is consistent with the data, and assess spectral differences between regions. Although the MVIC data could provide additional constraints, the models are only applied to LEISA data, because the MVIC and LEISA data sets were obtained at different times and thus at different viewing geometries.

For Hapke parameters, we assumed the single scattering phase function,  $P(g)$ , from (3), characterized by McGuire & Hapke parameters  $b = 0.3178$  and  $c = 0.7450$  (93). Hapke's opposition effect and macroscopic roughness parameters were not used (by setting Hapke's  $B_0$  and  $\bar{\theta}$  parameters to zero). Because all of the spectra being modeled were averages over a range of incidence and emission angles, we computed the models for simplified geometry with incident

angle  $i = 30^\circ$ , emission angle  $e = 30^\circ$ , and phase angle  $g = 10^\circ$ . These simplifications are justified by the low signal-to-noise ratio of the data and the coarseness of the spatial registration of the data, owing to the complex shape of the body and changing geometry from spacecraft motion during the LEISA scan. The target was in LEISA's field of view for a little over 4 minutes, during which the spacecraft closed from 32,770 to 29,110 km range from Arrokoth. The changing range is accounted for in our processing of LEISA data, but the phase angle also changed during the scan, and this change is not accounted for. During the scan, the phase angle grew from  $12.49^\circ$  to  $12.79^\circ$ . The start of the scan corresponds to the short wavelength end of the spectral range, so not accounting for this change in geometry could introduce a spurious spectral slope, but with just a  $0.3^\circ$  change over LEISA's spectral range, this is a small effect. This changing geometry over time also results in slightly different geometry between the LEISA data and the LORRI rider obtained during the same scan (see (3), their table S1).

We fitted models to the grand average spectrum incorporating a variety of potential ingredients. We considered the Akaike and Bayesian information criteria (AIC and BIC) to assess whether the inclusion of each particular ingredient was able to reduce  $\chi^2$  sufficiently to justify its inclusion. We found only five ingredients to be statistically supported on this basis: tholin, amorphous carbon, and  $\text{CH}_3\text{OH}$  ice, with this model accounting for 92% of the marginalized probability according to the AIC, and to a lesser extent,  $\text{NH}_3$  ice at 4.5%, and  $\text{H}_2\text{O}$  ice at 3%. According to the BIC, inclusion of  $\text{H}_2\text{O}$  and  $\text{NH}_3$  are less supported, because it penalizes the inclusion of additional model complexity more harshly than the AIC. We used optical constants for these materials from (20, 92, 94-96) for tholin,  $\text{CH}_3\text{OH}$  ice, amorphous carbon,  $\text{H}_2\text{O}$  ice, and  $\text{NH}_3$  ice, respectively. Tholins from a variety of sources were tried, but according to AIC and BIC criteria, no particular tholin is favored. Titan tholin (20) should be seen not as a specific identification but as a generic representative of this broad class of materials. Likewise, amorphous carbon (94) is a generic dark opaque material, and is not necessarily an exact match for the dark material present on Arrokoth.

### REX Data Processing

From the shape model of Arrokoth (3), the projected area of Arrokoth as observed from New Horizons at 05:52:14 UTC (time of minimum separation between the high-gain antenna (HGA) boresight and the position of Arrokoth), was  $414.4 \text{ km}^2$ . The distance at this time was

16,700 km. The main beam of the HGA at this distance covered an area about 230 times larger than the target, so the REX measurement was unresolved and only a global determination of the Arrokoth brightness temperature is possible. The observed radio flux is therefore a combination of source plus sky background. The contribution of the background was determined by performing an additional scan along the identical path in right ascension and declination, but one day after the flyby. As viewed from the spacecraft (Fig. 6A), Arrokoth was located on the edge of the Galactic plane in the opposite direction from the Galactic Center, well separated from all bright natural radio sources. With imperfect a priori knowledge of the precise location of Arrokoth, the REX scan was designed to cover all possible time-of-flight errors between  $\pm 180$  seconds of the nominal flyby design. This required scanning the HGA over a lengthy arc of  $1.2^\circ$  in RA and  $10.2^\circ$  in Dec, more than adequate to assure covering the slower motion of Arrokoth on the sky ( $0.5^\circ$  in RA;  $4.2^\circ$  in Dec). As it turned out, the target was 23 seconds late and thus near the middle of the pre-planned scan range.

The brightness temperature of the sky background within the HGA beam was determined to be only slightly higher than the cosmic microwave background temperature  $T_{\text{CMB}} = 2.73$  K. Nevertheless, the radio flux density from the background in each receiver is still about 25 times stronger than the maximum due to the excess thermal emission from Arrokoth. The main contributor to the observation noise, the system temperature of each receiver (REX A  $\sim 146$  K; REX B  $\sim 137$  K), was assumed to remain constant during each scan.

The flux density recorded for the target scan on encounter day is shown together with the background scan recorded one day later (Fig. 6B). The smooth black curve shows the modeled effect of an unresolved Arrokoth with a brightness temperature of 30 K. The target and background scans are plotted over their common declination interval in order to distinguish possible variations in the background. Both curves show only the changes in flux density with respect to the mean value measured during a calibration interval (also indicated in Fig. 6B), defined as those times when the HGA boresight was well separated from Arrokoth. The plotted flux density is a stacked average of the measurements from the two receivers, REX A and REX B, smoothed over a running interval of  $0.75^\circ$  in declination. The smoothing interval was selected as an optimum value: wide enough to reduce the measurement noise, but still narrow enough to capture changes during the roughly 80 seconds when Arrokoth passed through the HGA beam.

Appropriate for the point source case, the observations were fitted to a model with a Gaussian superimposed on a linear background. The best fitting model yielded a change in flux density at maximum of  $62 \pm 10$  Jansky, where the uncertainty accounts for the standard deviation of the entire fit to the data. Converting this to the global brightness temperature of Arrokoth (36, 37) yields  $T_B = 29 \pm 5$  K, roughly corresponding to a 6- $\sigma$  detection. Different declination smoothing intervals from  $0.25^\circ$  to  $1.25^\circ$  led to changes in brightness temperature of less than 1 K.

## Thermal models

Our modeling is based on the Arrokoth global shape model (3), reduced to a “low poly” version with  $N_f = 1962$  triangulated facets (Data S1). For a given facet  $i$ , with surface area  $\sigma_i$  and outward pointing normal vector  $\mathbf{n}_i$ , we determine which other faces  $j$  are viewable from it using simple ray-tracing, and from this we develop a logical face network  $N_{ij}$ , sometimes referred to as the “who-sees-who” list (38). For each  $i$ - $j$  pair, we assess their relative distance  $r_{ij}$  with corresponding unit vector  $\mathbf{r}_{ij}$ . This procedure is nominally an  $O(N_f^2)$  calculation, but is done only once for any given shape model and is subsequently used for all derived thermal models. This methodology accounts for large scale roughness expressed in the faceted shape model, but does not account for smaller scale roughness which can also be expected to affect surface temperatures.

We adopt a surface plus one-dimensional subsurface model to describe the near surface energy balance in which losses to radiation and subsurface conduction is balanced by the net received energy,  $\Phi_i$ , which is the radiative losses plus the gains from both solar insolation and surface re-radiation,

$$k \partial_z T_i|_{z=0} + \epsilon_i \sigma_B T_i^4 = \Phi_i = (1 - A_i) F_i + \sum_j \epsilon_j \sigma_B K_{ij} T_j^4, \quad (\text{S1})$$

$$F_i = F_* (\mathbf{n}_* \cdot \mathbf{n}_i),$$

where  $z$  is depth and the summation is over all non-zero  $N_{ij}$ .  $T_i$  is the surface temperature of element  $i$ . The local emissivity is  $\epsilon_i$  (assumed to be 0.9, following (40, 43)),  $F_i$  is the non-self-blocked insolation received by surface element  $i$  from the Sun located in the sky by unit vector  $\mathbf{n}_*$ ,  $(1 - A_i) F_i$  is the absorbed solar radiation flux (taking into account self-shadowing), and  $A_i$  the bond albedo, measured to be 0.06 (1, 3). The scaled radiated power emanating from facet  $j$  and received by facet  $i$  is quantified by the following expression:

$$K_{ij} = \sigma_i N_{ij} \frac{(\mathbf{n}_i \cdot \mathbf{r}_{ij})(-\mathbf{n}_j \cdot \mathbf{r}_{ij})}{2\pi r_{ij}^2}. \quad (\text{S2})$$

We adopt the 1D heat equation for the subsurface,

$$\rho C_p \partial_t \theta_i = k \partial_z^2 \theta_i, \quad (\text{S3})$$

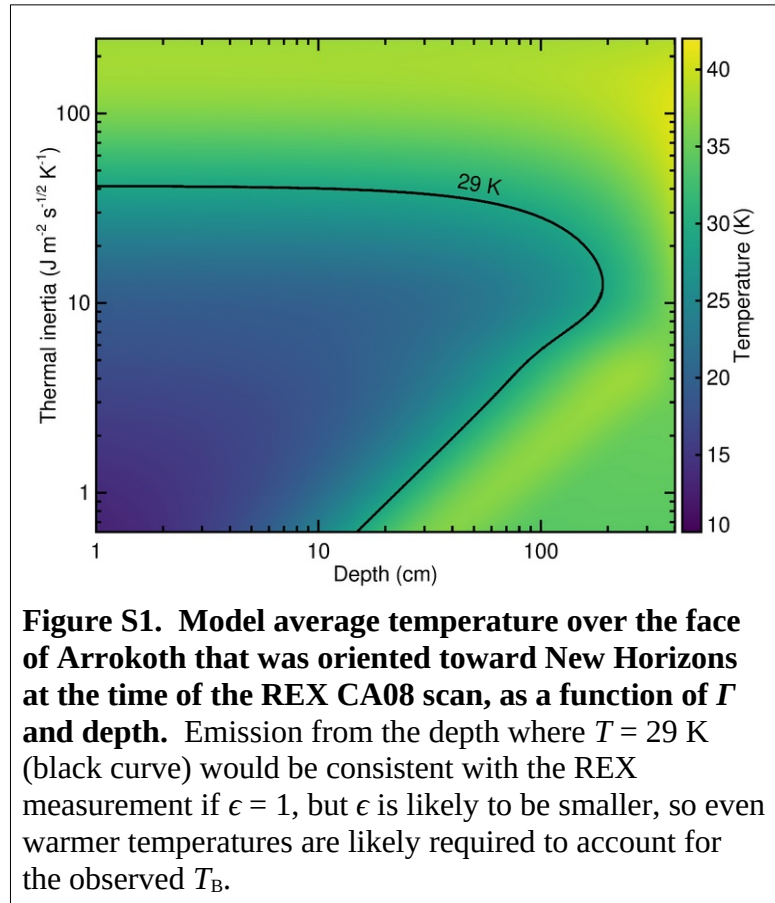
where  $\rho$  is the material density,  $C_p$  is its heat capacity,  $\theta_i$  is the depth dependent ( $z$ ) temperature of facet  $i$  where surface temperature is denoted by  $T_i = \theta_i$  (at  $z = 0$ ), and finally  $k$  is the material conductivity. Solutions to Eq. S3 are developed in the time-asymptotic limit whereby we impose the condition that the conductive flux goes to zero sufficiently deep underneath the surface (39). This amounts to representing the solution for the temperature for  $z < 0$  as a truncated sum in powers of seasonal frequency, i.e.,

$$\begin{aligned} \theta_i &= \bar{T}_i + \sum_{n=1, N} e^{\kappa_n z} (A_n e^{i\omega_0 n t} + \text{c.c.}); \\ \kappa_n &\equiv (1+i) \sqrt{\frac{n \omega_0 \rho C_p}{2k}}; \end{aligned} \quad (\text{S4})$$

where  $\bar{T}_i$  is the local mean temperature of element  $i$ . This solution approach has also been used in the thermal response analysis of Martian sand dunes (97). We construct solutions based on daily averaged solar insolation and proceed by building a received insolation profile for 298 evenly selected times over the course of  $\sim 298$  year orbit of Arrokoth. We truncate the number of frequencies retained in Eq. S4 to about 75 so as to minimize the possibility of incurring de-aliasing errors in the solution procedure. We then build solutions to Eqs. S1 and S3 via an iterative procedure. We start by solving Eq. S1 for  $T_i$  with  $k$  set to zero and calculate a first iteration of  $\Phi_i$ . This solution involves the inversion of a sparse matrix. This can be done via a forward iterative Gauss procedure because the matrix is well-conditioned. Then we correct  $T_i$  by solving Eq. S3 using this first guess for  $\Phi_i$ , as the flux boundary condition  $k \partial_z \theta_i|_{z=0} + \epsilon_i \sigma_B \theta_i^4|_{z=0} = \Phi_i$ . This provides a corrected surface temperature  $T_i = \theta_i|_{z=0}$  which is input back into Eq. S1 whereupon an updated value of  $\Phi_i$  is assessed and used as an updated upper boundary condition used to solve Eq. S3. This iterates until a converged solution is reached which is usually assessed to be when the maximum change between successive iterations is sufficiently small, i.e., when  $\max(\Delta\Phi_i/\Phi_i) < 10^{-4}$ , where  $\Delta\Phi_i$  is the difference between successive iterations of  $\Phi_i$ .

Following (1, 40), we assumed thermal inertia  $\Gamma = 2.5 \text{ J m}^{-2} \text{ s}^{-1/2} \text{ K}^{-1}$ . The resulting 16 K model mean surface temperature across the face of Arrokoth oriented toward New Horizons during the REX CA08 observation is far below the  $29 \pm 5 \text{ K}$  brightness temperature recorded by REX. However, thermal radiation tends to emerge from a range of depths within a surface, potentially extending to many times the wavelength below the surface. Additionally, we do not know the X-band emissivity ( $\epsilon$ ) of Arrokoth's surface that provides the link between kinetic and brightness temperatures. To explore the range of parameters permitted by the REX observation, we re-ran our model with  $\Gamma$  ranging from 0.5 to  $250 \text{ J m}^{-2} \text{ s}^{-1/2} \text{ K}^{-1}$  and computed temperatures at depths from the surface down to 4 m below the surface

( $\sim 100$  wavelengths), as shown in Fig. S1. The observed REX thermal emission is consistent with low thermal inertia and emission emerging from tens of cm below the surface, but is also consistent with higher thermal inertia and emission from closer to the surface. For instance, at the nominal  $2.5 \text{ J m}^{-2} \text{ s}^{-1/2} \text{ K}^{-1}$  thermal inertia, the mean temperature over the observed hemisphere is 29 K at a mean depth of  $\sim 50 \text{ cm}$  (12 REX wavelengths). For less than unit emissivity, warmer temperatures are



**Figure S1. Model average temperature over the face of Arrokoth that was oriented toward New Horizons at the time of the REX CA08 scan, as a function of  $\Gamma$  and depth.** Emission from the depth where  $T = 29 \text{ K}$  (black curve) would be consistent with the REX measurement if  $\epsilon = 1$ , but  $\epsilon$  is likely to be smaller, so even warmer temperatures are likely required to account for the observed  $T_B$ .

needed to account for the observed  $T_B$ , consistent with emission from greater depths. With  $\epsilon = 0.8$ , the corresponding kinetic temperature would be 36 K, which is reached at a depth of  $\sim 1 \text{ m}$ . The maximum temperatures seen for any thermal inertia and depth combination are in the  $\sim 41 \text{ K}$  range, implying a lower limit of 0.7 for the REX wavelength emissivity.

For the higher thermal inertia solutions, the required value of  $\Gamma$  would be  $>40 \text{ J m}^{-2} \text{ s}^{-1/2} \text{ K}^{-1}$  to reconcile the surface temperature with the REX observation with unit emissivity at REX

wavelengths. Surface and subsurface temperatures are similar for the high thermal inertia models, so the higher thermal inertia models place less constraint on the depth sampled by the 4.2 cm the emission. A high thermal inertia is inconsistent with the statistical estimates from (40), but those estimates are for diurnal timescales rather than seasonal timescales. Higher thermal conduction at depth could enable seasonal thermal inertias to be much higher than the values relevant for diurnal timescales. Additionally, the (40) sample does not include small CCKBOs in Arrokoth's size range, so it might not even be relevant to such objects.

Effects of unresolved surface roughness can be important in some thermal environments. These were explored by (98) through use of effective values of the albedo and emissivity. Arrokoth's bond albedo has been directly measured as 0.06 (1, 3), so we leave it unchanged, but we tried higher values of emissivity  $\epsilon = 0.95$  and  $\epsilon = 1.0$  consistent with a rough surface. These led to slightly lower temperatures by up to 1 K across the observed face of Arrokoth, not enough to materially affect our conclusions.

### **Data S1 (separate file).**

A low facet count version of the Arrokoth shape model (3) used in our thermal models is provided as an ASCII file consisting of 1,039 lines representing vertices starting with the character v, followed by 1,962 lines representing facets starting with the character f. Each vertex line has three white-space separated floating point values representing  $x$ ,  $y$ ,  $z$  coordinates in units of km. The axes are aligned with the shape's principal axes of inertia and the origin corresponds to the center of mass assuming a uniform internal density. Each facet line has three white-space separated integers specifying three vertices to define the corners of that triangular facet, in order such that the right hand rule points in the direction of the exterior of the shape. The index of the first vertex line is 1 and the last is 1,039.

## References

1. S. A. Stern, H. A. Weaver, J. R. Spencer, C. B. Olkin, G. R. Gladstone, W. M. Grundy, J. M. Moore, D. P. Cruikshank, H. A. Elliott, W. B. McKinnon, J. W. Parker, A. J. Verbiscer, L. A. Young, D. A. Aguilar, J. M. Albers, T. Andert, J. P. Andrews, F. Bagenal, M. E. Banks, B. A. Bauer, J. A. Bauman, K. E. Bechtold, C. B. Beddingfield, N. Behrooz, K. B. Beisser, S. D. Benecchi, E. Bernardoni, R. A. Beyer, S. Bhaskaran, C. J. Bierson, R. P. Binzel, E. M. Birath, M. K. Bird, D. R. Boone, A. F. Bowman, V. J. Bray, D. T. Britt, L. E. Brown, M. R. Buckley, M. W. Buie, B. J. Buratti, L. M. Burke, S. S. Bushman, B. Carcich, A. L. Chaikin, C. L. Chavez, A. F. Cheng, E. J. Colwell, S. J. Conard, M. P. Conner, C. A. Conrad, J. C. Cook, S. B. Cooper, O. S. Custodio, C. M. Dalle Ore, C. C. Deboy, P. Dharmavaram, R. D. Dhingra, G. F. Dunn, A. M. Earle, A. F. Egan, J. Eisig, M. R. El-Maarry, C. Engelbrecht, B. L. Enke, C. J. Ercol, E. D. Fattig, C. L. Ferrell, T. J. Finley, J. Firer, J. Fischetti, W. M. Folkner, M. N. Fosbury, G. H. Fountain, J. M. Freeze, L. Gabasova, L. S. Glaze, J. L. Green, G. A. Griffith, Y. Guo, M. Hahn, D. W. Hals, D. P. Hamilton, S. A. Hamilton, J. J. Hanley, A. Harch, K. A. Harmon, H. M. Hart, J. Hayes, C. B. Hersman, M. E. Hill, T. A. Hill, J. D. Hofgartner, M. E. Holdridge, M. Horányi, A. Hosadurga, A. D. Howard, C. J. A. Howett, S. E. Jaskulek, D. E. Jennings, J. R. Jensen, M. R. Jones, H. K. Kang, D. J. Katz, D. E. Kaufmann, J. J. Kavelaars, J. T. Keane, G. P. Keleher, M. Kinczyk, M. C. Kochte, P. Kollmann, S. M. Krimigis, G. L. Kruizinga, D. Y. Kusnierkiewicz, M. S. Lahr, T. R. Lauer, G. B. Lawrence, J. E. Lee, E. J. Lessac-Chenen, I. R. Linscott, C. M. Lisse, A. W. Lunsford, D. M. Mages, V. A. Mallder, N. P. Martin, B. H. May, D. J. McComas, R. L. McNutt Jr., D. S. Mehoke, T. S. Mehoke, D. S. Nelson, H. D. Nguyen, J. I. Núñez, A. C. Ocampo, W. M. Owen, G. K. Oxton, A. H. Parker, M. Pätzold, J. Y. Pelgrift, F. J. Pelletier, J. P. Pineau, M. R. Piquette, S. B. Porter, S. Protopapa, E. Quirico, J. A. Redfern, A. L. Regiec, H. J. Reitsema, D. C. Reuter, D. C. Richardson, J. E. Riedel, M. A. Ritterbush, S. J. Robbins, D. J. Rodgers, G. D. Rogers, D. M. Rose, P. E. Rosendall, K. D. Runyon, M. G. Ryschkewitsch, M. M. Saina, M. J. Salinas, P. M. Schenk, J. R. Scherrer, W. R. Schlei, B. Schmitt, D. J. Schultz, D. C. Schurr, F. Scipioni, R. L. Sepan, R. G. Shelton, M. R. Showalter, M. Simon, K. N. Singer, E. W. Stahlheber, D. R. Stanbridge, J. A. Stansberry, A. J. Steffl, D. F. Strobel, M. M. Stothoff, T. Stryk, J. R. Stuart, M. E. Summers, M. B. Tapley, A. Taylor, H. W. Taylor, R. M. Tedford, H. B. Throop, L. S. Turner, O. M. Umurhan, J. Van Eck, D. Velez, M. H. Versteeg, M. A. Vincent, R. W. Webbert, S. E. Weidner, G. E. Weigle 2nd, J. R. Wendel, O. L. White, K. E. Whittenburg, B. G. Williams, K. E. Williams, S. P. Williams, H. L. Winters, A. M. Zangari, T. H. Zurbuchen, Initial results from the New Horizons exploration of 2014 MU<sub>69</sub>, a small Kuiper Belt object. *Science* **364**, eaaw9771 (2019). [doi:10.1126/science.aaw9771](https://doi.org/10.1126/science.aaw9771) [Medline](#)
2. S. B. Porter, M. W. Buie, A. H. Parker, J. R. Spencer, S. Benecchi, P. Tanga, A. Verbiscer, J. J. Kavelaars, S. D. J. Gwyn, E. F. Young, H. A. Weaver, C. B. Olkin, J. W. Parker, S. A.



- Stern, High-precision orbit fitting and uncertainty analysis of (486958) 2014 MU<sub>69</sub>. *Astron. J.* **156**, 20 (2018). [doi:10.3847/1538-3881/aac2e1](https://doi.org/10.3847/1538-3881/aac2e1)
3. J. R. Spencer, S. A. Stern, J. M. Moore, H. A. Weaver, K. N. Singer, C. B. Olkin, A. J. Verbiscer, W. B. McKinnon, J. W. Parker, R. A. Beyer, J. T. Keane, T. R. Lauer, S. B. Porter, O. L. White, B. J. Buratti, M. R. El-Maarry, C. M. Lisse, A. H. Parker, H. B. Throop, S. J. Robbins, O. M. Umurhan, R. P. Binzel, D. T. Britt, M. W. Buie, A. F. Cheng, D. P. Cruikshank, H. A. Elliott, G. R. Gladstone, W. M. Grundy, M. E. Hill, M. Horányi, D. E. Jennings, J. J. Kavelaars, I. R. Linscott, D. J. McComas, R. L. McNutt Jr., S. Protopapa, D. C. Reuter, P. M. Schenk, M. R. Showalter, L. A. Young, A. M. Zangari, A. Y. Abedin, C. B. Beddingfield, S. D. Benecchi, E. Bernardoni, C. J. Bierson, D. Borncamp, V. J. Bray, A. L. Chaikin, R. D. Dzingra, C. Fuentes, T. Fuse, P. L. Gay, S. D. J. Gwyn, D. P. Hamilton, J. D. Hofgartner, M. J. Holman, A. D. Howard, C. J. A. Howett, H. Karoji, D. E. Kaufmann, M. Kinczyk, B. H. May, M. Mountain, M. Pätzold, J. M. Petit, M. R. Piquette, I. N. Reid, H. J. Reitsema, K. D. Runyon, S. S. Sheppard, J. A. Stansberry, T. Stryk, P. Tanga, D. J. Tholen, D. E. Trilling, L. H. Wasserman, The geology and geophysics of Kuiper Belt object (486958) Arrokoth. *Science* **367**, 10.1126/science.aay3999 (2020).
  4. J.-M. Petit, J. J. Kavelaars, B. J. Gladman, R. L. Jones, J. W. Parker, C. Van Laerhoven, P. Nicholson, G. Mars, P. Rousselot, O. Mousis, B. Marsden, A. Bieryla, M. Taylor, M. L. N. Ashby, P. Benavidez, A. Campo Bagatin, G. Bernabeu, The Canada-France Ecliptic Plane Survey - full data release: The orbital structure of the Kuiper belt. *Astron. J.* **142**, 131 (2011). [doi:10.1088/0004-6256/142/4/131](https://doi.org/10.1088/0004-6256/142/4/131)
  5. H. F. Levison, A. Morbidelli, C. Van Laerhoven, R. Gomes, K. Tsiganis, Origin of the structure of the Kuiper belt during a dynamical instability in the orbits of Uranus and Neptune. *Icarus* **196**, 258–273 (2008). [doi:10.1016/j.icarus.2007.11.035](https://doi.org/10.1016/j.icarus.2007.11.035)
  6. K. S. Noll, W. M. Grundy, D. C. Stephens, H. F. Levison, S. D. Kern, Evidence for two populations of classical transneptunian objects: The strong inclination dependence of classical binaries. *Icarus* **194**, 758–768 (2008). [doi:10.1016/j.icarus.2007.10.022](https://doi.org/10.1016/j.icarus.2007.10.022)
  7. S. C. Tegler, W. Romanishin, Extremely red Kuiper-belt objects in near-circular orbits beyond 40 AU. *Nature* **407**, 979–981 (2000). [doi:10.1038/35039572](https://doi.org/10.1038/35039572) [Medline](#)
  8. R. E. Pike, W. C. Fraser, M. E. Schwamb, J. J. Kavelaars, M. Marsset, M. T. Bannister, M. J. Lehner, S.-Y. Wang, M. Alexandersen, Y.-T. Chen, B. J. Gladman, S. Gwyn, J.-M. Petit, K. Volk, Col-OSSOS: Z-band photometry reveals three distinct TNO surface types. *Astron. J.* **154**, 101 (2017). [doi:10.3847/1538-3881/aa83b1](https://doi.org/10.3847/1538-3881/aa83b1)
  9. H. F. Levison, S. A. Stern, On the size dependence of the inclination distribution of the main Kuiper Belt. *Astron. J.* **121**, 1730–1735 (2001). [doi:10.1086/319420](https://doi.org/10.1086/319420)

10. M. E. Schwamb, M. E. Brown, W. C. Fraser, The small numbers of large Kuiper belt objects. *Astron. J.* **147**, 2 (2014). [doi:10.1088/0004-6256/147/1/2](https://doi.org/10.1088/0004-6256/147/1/2)
11. M. J. Brucker, W. M. Grundy, J. A. Stansberry, J. R. Spencer, S. S. Sheppard, E. I. Chiang, M. W. Buie, High albedos of low inclination Classical Kuiper belt objects. *Icarus* **201**, 284–294 (2009). [doi:10.1016/j.icarus.2008.12.040](https://doi.org/10.1016/j.icarus.2008.12.040)
12. E. Vilenius, C. Kiss, T. Müller, M. Mommert, P. Santos-Sanz, A. Pál, J. Stansberry, M. Mueller, N. Peixinho, E. Lellouch, S. Fornasier, A. Delsanti, A. Thirouin, J. L. Ortiz, R. Duffard, D. Perna, F. Henry, “TNOs are Cool”: A survey of the trans-neptunian region X. Analysis of classical Kuiper belt objects from Herschel and Spitzer observations. *Astron. Astrophys.* **564**, A35 (2014). [doi:10.1051/0004-6361/201322416](https://doi.org/10.1051/0004-6361/201322416)
13. W. B. McKinnon, D. C. Richardson, J. C. Marohnic, J. T. Keane, W. M. Grundy, D. P. Hamilton, D. Nesvorný, O. M. Umurhan, T. R. Lauer, K. N. Singer, S. A. Stern, H. A. Weaver, J. R. Spencer, M. W. Buie, J. M. Moore, J. J. Kavelaars, C. M. Lisse, X. Mao, A. H. Parker, S. B. Porter, M. R. Showalter, C. B. Olkin, D. P. Cruikshank, H. A. Elliott, G. R. Gladstone, J. W. Parker, A. J. Verbiscer, L. A. Young, New Horizons Science Team, The solar nebula origin of (486958) Arrokoth, a primordial contact binary in the Kuiper Belt. *Science* **367**, 10.1126/science.aay6620 (2020).
14. D. C. Reuter, S. A. Stern, J. Scherrer, D. E. Jennings, J. W. Baer, J. Hanley, L. Hardaway, A. Lunsford, S. McMurdock, J. Moore, C. Olkin, R. Parizek, H. Reitsma, D. Sabatke, J. Spencer, J. Stone, H. Throop, J. Van Cleve, G. E. Weigle, L. A. Young, Ralph: A visible/infrared imager for the New Horizons Pluto/Kuiper belt mission. *Space Sci. Rev.* **140**, 129–154 (2008). [doi:10.1007/s11214-008-9375-7](https://doi.org/10.1007/s11214-008-9375-7)
15. See supplementary materials.
16. A. F. Cheng, H. A. Weaver, S. J. Conard, M. F. Morgan, O. Barnouin-Jha, J. D. Boldt, K. A. Cooper, E. H. Darlington, M. P. Grey, J. R. Hayes, K. E. Kosakowski, T. Magee, E. Rossano, D. Sampath, C. Schlemm, H. W. Taylor, Long-Range Reconnaissance Imager on New Horizons. *Space Sci. Rev.* **140**, 189–215 (2008). [doi:10.1007/s11214-007-9271-6](https://doi.org/10.1007/s11214-007-9271-6)
17. G. L. Tyler, I. R. Linscott, M. K. Bird, D. P. Hinson, D. F. Strobel, M. Pätzold, M. E. Summers, K. Sivaramakrishnan, The New Horizons radio science experiment (REX). *Space Sci. Rev.* **140**, 217–259 (2008). [doi:10.1007/s11214-007-9302-3](https://doi.org/10.1007/s11214-007-9302-3)
18. O. R. Hainaut, A. C. Delsanti, Colors of minor bodies in the outer Solar System: A statistical analysis. *Astron. Astrophys.* **389**, 641–664 (2002). [doi:10.1051/0004-6361:20020431](https://doi.org/10.1051/0004-6361:20020431)
19. D. P. Cruikshank, H. Imanaka, C. M. Dalle Ore, Tholins as coloring agents on outer Solar System bodies. *Adv. Space Res.* **36**, 178–183 (2005). [doi:10.1016/j.asr.2005.07.026](https://doi.org/10.1016/j.asr.2005.07.026)
20. B. N. Khare, C. Sagan, E. T. Arakawa, F. Suits, T. A. Callcott, M. W. Williams, Optical constants of organic tholins produced in a simulated Titanian atmosphere: From soft X-

- ray to microwave frequencies. *Icarus* **60**, 127–134 (1984). [doi:10.1016/0019-1035\(84\)90142-8](https://doi.org/10.1016/0019-1035(84)90142-8)
21. B. N. Khare, W. R. Thompson, L. Cheng, C. Chyba, C. Sagan, E. T. Arakawa, C. Meisse, P. S. Tuminello, Production and optical constants of ice tholin from charged particle irradiation of (1:6) C<sub>2</sub>H<sub>6</sub>/H<sub>2</sub>O at 77 K. *Icarus* **103**, 290–300 (1993). [doi:10.1006/icar.1993.1071](https://doi.org/10.1006/icar.1993.1071)
  22. B. N. Khare *et al.*, Optical constants of Triton tholin: Preliminary results. *Bull. Am. Astron. Soc.* **26**, 1176–1177 (1994).
  23. H. Imanaka, B. N. Khare, J. E. Elsila, E. L. O. Bakes, C. P. McKay, D. P. Cruikshank, S. Sugita, T. Matsui, R. N. Zare, Laboratory experiments of Titan tholin formed in cold plasma at various pressures: Implications for nitrogen-containing polycyclic aromatic compounds in Titan haze. *Icarus* **168**, 344–366 (2004). [doi:10.1016/j.icarus.2003.12.014](https://doi.org/10.1016/j.icarus.2003.12.014)
  24. C. K. Materese, D. P. Cruikshank, S. A. Sandford, H. Imanaka, M. Nuevo, D. W. White, Ice chemistry on outer Solar System bodies: Carboxylic acids, nitriles, and urea detected in refractory residues produced from the UV photolysis of N<sub>2</sub>:CH<sub>4</sub>:CO-containing ices. *Astrophys. J.* **788**, 111 (2014). [doi:10.1088/0004-637X/788/2/111](https://doi.org/10.1088/0004-637X/788/2/111)
  25. C. K. Materese, D. P. Cruikshank, S. A. Sandford, H. Imanaka, M. Nuevo, Ice chemistry on outer Solar System bodies: Electron radiolysis of N<sub>2</sub>-, CH<sub>4</sub>-, and CO-containing ices. *Astrophys. J.* **812**, 150 (2015). [doi:10.1088/0004-637X/812/2/150](https://doi.org/10.1088/0004-637X/812/2/150)
  26. N. Peixinho, A. Delsanti, A. Guilbert-Lepoutre, R. Gafeira, P. Lacerda, The bimodal colors of Centaurs and small Kuiper belt objects. *Astron. Astrophys.* **546**, A86 (2012). [doi:10.1051/0004-6361/201219057](https://doi.org/10.1051/0004-6361/201219057)
  27. F. E. DeMeo, B. Carry, The taxonomic distribution of asteroids from multi-filter all-sky photometric surveys. *Icarus* **226**, 723–741 (2013). [doi:10.1016/j.icarus.2013.06.027](https://doi.org/10.1016/j.icarus.2013.06.027)
  28. G. M. Szabó, Z. Ivezić, M. Jurić, R. Lupton, The properties of jovian Trojan asteroids listed in SDSS Moving Object Catalogue 3. *Mon. Not. R. Astron. Soc.* **377**, 1393–1406 (2007). [doi:10.1111/j.1365-2966.2007.11687.x](https://doi.org/10.1111/j.1365-2966.2007.11687.x)
  29. W. C. Fraser, M. E. Brown, The Hubble Wide Field Camera 3 test of surfaces in the outer Solar System: The compositional classes of the Kuiper belt. *Astrophys. J.* **749**, 33 (2012). [doi:10.1088/0004-637X/749/1/33](https://doi.org/10.1088/0004-637X/749/1/33)
  30. B. Schmitt, S. Philippe, W. M. Grundy, D. C. Reuter, R. Côte, E. Quirico, S. Protopapa, L. A. Young, R. P. Binzel, J. C. Cook, D. P. Cruikshank, C. M. Dalle Ore, A. M. Earle, K. Ennico, C. J. A. Howett, D. E. Jennings, I. R. Linscott, A. W. Lunsford, C. B. Olkin, A. H. Parker, J. W. Parker, K. N. Singer, J. R. Spencer, J. A. Stansberry, S. A. Stern, C. C. Tsang, A. J. Verbiscer, H. A. Weaver, Physical state and distribution of materials at the surface of Pluto from New Horizons LEISA imaging spectrometer. *Icarus* **287**, 229–260 (2017). [doi:10.1016/j.icarus.2016.12.025](https://doi.org/10.1016/j.icarus.2016.12.025)

31. B. Hapke, *Theory of Reflectance and Emittance Spectroscopy* (Cambridge Univ. Press, ed. 2, 2012).
32. S. A. Sandford, L. J. Allamandola, Condensation and vaporization studies of CH<sub>3</sub>OH and NH<sub>3</sub> ices: Major implications for astrochemistry. *Astrophys. J.* **417**, 815–825 (1993). [doi:10.1086/173362](https://doi.org/10.1086/173362) [Medline](#)
33. D. P. Cruikshank, T. L. Roush, M. J. Bartholomew, T. R. Geballe, Y. J. Pendleton, S. M. White, J. F. Bell III, J. K. Davies, T. C. Owen, C. de Bergh, D. J. Tholen, M. P. Bernstein, R. H. Brown, K. A. Tryka, C. M. Dalle Ore, The composition of Centaur 5145 Pholus. *Icarus* **135**, 389–407 (1998). [doi:10.1006/icar.1998.5997](https://doi.org/10.1006/icar.1998.5997)
34. M. A. Barucci, F. Merlin, E. Dotto, A. Doressoundiram, C. de Bergh, TNO surface ices: Observations of the TNO 55638 (2002 VE<sub>95</sub>) and analysis of the population's spectral properties. *Astron. Astrophys.* **455**, 725–730 (2006). [doi:10.1051/0004-6361/20064951](https://doi.org/10.1051/0004-6361/20064951)
35. H. Zheng, M. Tegmark, J. S. Dillon, D. A. Kim, A. Liu, A. R. Neben, J. Jonas, P. Reich, W. Reich, An improved model of diffuse galactic radio emission from 10 MHz to 5 THz. *Mon. Not. R. Astron. Soc.* **464**, 3486–3497 (2017). [doi:10.1093/mnras/stw2525](https://doi.org/10.1093/mnras/stw2525)
36. M. K. Bird, I. R. Linscott, G. L. Tyler, D. P. Hinson, M. Pätzold, M. E. Summers, D. F. Strobel, S. A. Stern, H. A. Weaver, C. B. Olkin, L. A. Young, K. Ennico, J. M. Moore, G. R. Gladstone, W. M. Grundy, C. C. DeBoy, M. Vincent, Radio thermal emission from Pluto and Charon during the New Horizons encounter. *Icarus* **322**, 192–209 (2019). [doi:10.1016/j.icarus.2019.01.004](https://doi.org/10.1016/j.icarus.2019.01.004)
37. I. R. Linscott *et al.*, Radiometer Calibration at 4.2 cm on New Horizons. Stanford Radioscience Report No. 17-06-0 (2017); [https://sbn.astro.umd.edu/holdings/nh-j-rex-2-jupiter-v2.0/document/nh\\_rex\\_radiometer\\_calib\\_v4p7.pdf](https://sbn.astro.umd.edu/holdings/nh-j-rex-2-jupiter-v2.0/document/nh_rex_radiometer_calib_v4p7.pdf).
38. D. Vokrouhlický, W. F. Bottke, S. R. Chesley, D. J. Scheeres, T. S. Statler, in *Asteroids IV*, P. Michel, F. E. DeMeo, W. F. Bottke, Eds. (Univ. of Arizona Press, 2015), pp. 509–531.
39. O. L. White, O. M. Umurhan, J. W. Moore, A. D. Howard, Modeling of ice pinnacle formation on Callisto. *J. Geophys. Res.* **121**, 21–45 (2016). [doi:10.1002/2015JE004846](https://doi.org/10.1002/2015JE004846)
40. E. Lellouch, P. Santos-Sanz, P. Lacerda, M. Mommert, R. Duffard, J. L. Ortiz, T. G. Müller, S. Fornasier, J. Stansberry, C. Kiss, E. Vilenius, M. Mueller, N. Peixinho, R. Moreno, O. Groussin, A. Delsanti, A. W. Harris, “TNOs are Cool”: A survey of the trans-neptunian region IX. Thermal properties of Kuiper belt objects and Centaurs from combined Herschel and Spitzer observations. *Astron. Astrophys.* **557**, A60 (2013). [doi:10.1051/0004-6361/201322047](https://doi.org/10.1051/0004-6361/201322047)
41. M. Pätzold, T. Andert, M. Hahn, S. W. Asmar, J.-P. Barriot, M. K. Bird, B. Häusler, K. Peter, S. Tellmann, E. Grün, P. R. Weissman, H. Sierks, L. Jorda, R. Gaskell, F. Preusker, F. Scholten, A homogeneous nucleus for comet 67P/Churyumov-Gerasimenko from its gravity field. *Nature* **530**, 63–65 (2016). [doi:10.1038/nature16535](https://doi.org/10.1038/nature16535) [Medline](#)

42. C. J. Bierson, F. Nimmo, Using the density of Kuiper belt objects to constrain their composition and formation history. *Icarus* **326**, 10–17 (2019). [doi:10.1016/j.icarus.2019.01.027](https://doi.org/10.1016/j.icarus.2019.01.027)
43. J. R. Spencer, A rough-surface thermophysical model for airless planets. *Icarus* **83**, 27–38 (1990). [doi:10.1016/0019-1035\(90\)90004-S](https://doi.org/10.1016/0019-1035(90)90004-S)
44. R. S. Gomes, A. Morbidelli, H. F. Levison, Planetary migration in a planetesimal disk: Why did Neptune stop at 30 au. *Icarus* **170**, 492–507 (2004). [doi:10.1016/j.icarus.2004.03.011](https://doi.org/10.1016/j.icarus.2004.03.011)
45. A. Shannon, Y. Wu, Y. Lithwick, Forming the cold classical Kuiper belt in a light disk. *Astrophys. J.* **818**, 175 (2016). [doi:10.3847/0004-637X/818/2/175](https://doi.org/10.3847/0004-637X/818/2/175)
46. K. M. Barkume, M. E. Brown, E. L. Schaller, Near-infrared spectra of Centaurs and Kuiper belt objects. *Astron. J.* **135**, 55–67 (2008). [doi:10.1088/0004-6256/135/1/55](https://doi.org/10.1088/0004-6256/135/1/55)
47. M. A. Barucci, A. Alvarez-Candal, F. Merlin, I. N. Belskaya, C. de Bergh, D. Perna, F. DeMeo, S. Fornasier, New insights on ices in Centaur and transneptunian populations. *Icarus* **214**, 297–307 (2011). [doi:10.1016/j.icarus.2011.04.019](https://doi.org/10.1016/j.icarus.2011.04.019)
48. D. Nesvorný, R. Li, A. Youdin, J. B. Simon, W. M. Grundy, Trans-Neptunian binaries as evidence for planetesimal formation by the streaming instability. *Nat. Astron.* **3**, 808–812 (2019). [doi:10.1038/s41550-019-0806-z](https://doi.org/10.1038/s41550-019-0806-z)
49. C. Dominik, A. G. G. M. Tielens, The physics of dust coagulation and the structure of dust aggregates in space. *Astrophys. J.* **480**, 647–673 (1997). [doi:10.1086/303996](https://doi.org/10.1086/303996)
50. J. Blum, G. Wurm, The growth mechanisms of macroscopic bodies in protoplanetary disks. *Annu. Rev. Astron. Astrophys.* **46**, 21–56 (2008). [doi:10.1146/annurev.astro.46.060407.145152](https://doi.org/10.1146/annurev.astro.46.060407.145152)
51. A. N. Youdin, J. Goodman, Streaming instabilities in protoplanetary disks. *Astrophys. J.* **620**, 459–469 (2005). [doi:10.1086/426895](https://doi.org/10.1086/426895)
52. A. Johansen, J. S. Oishi, M. M. Mac Low, H. Klahr, T. Henning, A. Youdin, Rapid planetesimal formation in turbulent circumstellar disks. *Nature* **448**, 1022–1025 (2007). [doi:10.1038/nature06086](https://doi.org/10.1038/nature06086) [Medline](#)
53. S. J. Weidenschilling, Aerodynamics of solid bodies in the solar nebula. *Mon. Not. R. Astron. Soc.* **180**, 57–70 (1977). [doi:10.1093/mnras/180.2.57](https://doi.org/10.1093/mnras/180.2.57)
54. M. N. Drozdovskaya, C. Walsh, E. F. van Dishoeck, K. Furuya, U. Marboeuf, A. Thiabaud, D. Harsono, R. Visser, Cometary ices in forming protoplanetary disc midplanes. *Mon. Not. R. Astron. Soc.* **462**, 977–993 (2016). [doi:10.1093/mnras/stw1632](https://doi.org/10.1093/mnras/stw1632)
55. T. Henning, D. Semenov, Chemistry in protoplanetary disks. *Chem. Rev.* **113**, 9016–9042 (2013). [doi:10.1021/cr400128p](https://doi.org/10.1021/cr400128p) [Medline](#)

56. F. J. Ciesla, S. A. Sandford, Organic synthesis via irradiation and warming of ice grains in the solar nebula. *Science* **336**, 452–454 (2012). [doi:10.1126/science.1217291](https://doi.org/10.1126/science.1217291) [Medline](#)
57. K. I. Öberg, R. Murray-Clay, E. A. Bergin, The effect of snowlines on C/O in planetary atmospheres. *Astrophys. J.* **743**, L16 (2011). [doi:10.1088/2041-8205/743/1/L16](https://doi.org/10.1088/2041-8205/743/1/L16)
58. A. G. G. M. Tielens, W. Hagen, Model calculations of the molecular composition of interstellar grain mantles. *Astron. Astrophys.* **114**, 245–260 (1982).
59. H. M. Cuppen, E. F. van Dishoeck, E. Herbst, A. G. G. M. Tielens, Microscopic simulation of methanol and formaldehyde ice formation in cold dense cores. *Astron. Astrophys.* **508**, 275–287 (2009). [doi:10.1051/0004-6361/200913119](https://doi.org/10.1051/0004-6361/200913119)
60. M. Ruaud, U. Gorti, A three-phase approach to grain surface chemistry in protoplanetary disks: Gas, ice surfaces, and ice mantles of dust grains. *Astrophys. J.* **885**, 146 (2019). [doi:10.3847/1538-4357/ab4996](https://doi.org/10.3847/1538-4357/ab4996)
61. A. D. Bosman, C. Walsh, E. F. van Dishoeck, CO destruction in protoplanetary disk midplanes: Inside versus outside the CO snow surface. *Astron. Astrophys.* **618**, A182 (2018). [doi:10.1051/0004-6361/201833497](https://doi.org/10.1051/0004-6361/201833497)
62. R. Brunetto, G. A. Baratta, M. Domingo, G. Strazzulla, Reflectance and transmittance spectra (2.2–2.4  $\mu\text{m}$ ) of ion irradiated methanol. *Icarus* **175**, 226–232 (2005). [doi:10.1016/j.icarus.2004.10.011](https://doi.org/10.1016/j.icarus.2004.10.011)
63. M. H. Moore, R. L. Hudson, Infrared study of ion-irradiated water-ice mixtures with hydrocarbons relevant to comets. *Icarus* **135**, 518–527 (1998). [doi:10.1006/icar.1998.5996](https://doi.org/10.1006/icar.1998.5996)
64. A. Wada, N. Mochizuki, K. Hiraoka, Methanol formation from electron-irradiated mixed  $\text{H}_2\text{O}/\text{CH}_4$  ice at 10 K. *Astrophys. J.* **644**, 300–306 (2006). [doi:10.1086/503380](https://doi.org/10.1086/503380)
65. R. Hodyss, P. V. Johnson, J. V. Stern, J. D. Goguen, I. Kanik, Photochemistry of methane–water ices. *Icarus* **200**, 338–342 (2009). [doi:10.1016/j.icarus.2008.10.024](https://doi.org/10.1016/j.icarus.2008.10.024)
66. M. P. Pearce, M. J. Bussemaker, P. D. Cooper, K. M. Lapere, D. A. Wild, A. J. McKinley, Formation of methanol from methane and water in an electrical discharge. *Phys. Chem. Chem. Phys.* **14**, 3444–3449 (2012). [doi:10.1039/c2cp22135g](https://doi.org/10.1039/c2cp22135g) [Medline](#)
67. G. D. McDonald, L. J. Whited, C. DeRuiter, B. N. Khare, A. Patnaik, C. Sagan, Production and chemical analysis of cometary ice tholins. *Icarus* **122**, 107–117 (1996). [doi:10.1006/icar.1996.0112](https://doi.org/10.1006/icar.1996.0112)
68. C. Walsh, R. A. Loomis, K. I. Öberg, M. Kama, M. L. R. van 't Hoff, T. J. Millar, Y. Aikawa, E. Herbst, S. L. Widicus Weaver, H. Nomura, First detection of gas-phase methanol in a protoplanetary disk. *Astrophys. J.* **823**, L10 (2016). [doi:10.3847/2041-8205/823/1/L10](https://doi.org/10.3847/2041-8205/823/1/L10)

69. C. Walsh, S. Vissapragada, H. McGee, in *Astrochemistry VII - Through the Cosmos from Galaxies to Planets, Proceedings IAU Symposium No. 332*, M. Cunningham, T. Millar, Y. Aikawa, Eds. (International Astronomical Union, 2018), pp. 395–402.
70. E. A. Bergin, L. I. Cleeves, U. Gorti, K. Zhang, G. A. Blake, J. D. Green, S. M. Andrews, N. J. Evans 2nd, T. Henning, K. Öberg, K. Pontoppidan, C. Qi, C. Salyk, E. F. van Dishoeck, An old disk still capable of forming a planetary system. *Nature* **493**, 644–646 (2013). [doi:10.1038/nature11805](https://doi.org/10.1038/nature11805) [Medline](#)
71. M. K. McClure, E. A. Bergin, L. I. Cleeves, E. F. Dishoeck, G. A. Blake, N. J. Evans II, J. D. Green, T. Henning, K. I. Öberg, K. M. Pontoppidan, C. Salyk, Mass measurements in protoplanetary disks from hydrogen deuteride. *Astrophys. J.* **831**, 167 (2016). [doi:10.3847/0004-637X/831/2/167](https://doi.org/10.3847/0004-637X/831/2/167)
72. S. Krijt, K. R. Schwarz, E. A. Bergin, F. J. Ciesla, Transport of CO in protoplanetary disks: Consequences of pebble formation, settling, and radial drift. *Astrophys. J.* **864**, 78 (2018). [doi:10.3847/1538-4357/aad69b](https://doi.org/10.3847/1538-4357/aad69b)
73. K. Zhang, E. A. Bergin, K. Schwarz, S. Krijt, F. Ciesla, Systematic variations of CO gas abundance with radius in gas-rich protoplanetary disks. *Astrophys. J.* **883**, 98 (2019). [doi:10.3847/1538-4357/ab38b9](https://doi.org/10.3847/1538-4357/ab38b9)
74. S. C. Tegler, W. Romanishin, G. J. Consolmagno, J. Rall, R. Worhatch, M. Nelson, S. Weidenschilling, The period of rotation, shape, density, and homogeneous surface color of the Centaur 5145 Pholus. *Icarus* **175**, 390–396 (2005). [doi:10.1016/j.icarus.2004.12.011](https://doi.org/10.1016/j.icarus.2004.12.011)
75. M. A. Barucci, F. Merlin, D. Perna, A. Alvarez-Candal, T. Müller, M. Mommert, C. Kiss, S. Fornasier, P. Santos-Sanz, E. Dotto, The extra red plutino (55638) 2002 VE<sub>95</sub>. *Astron. Astrophys.* **539**, A152 (2012). [doi:10.1051/0004-6361/201118505](https://doi.org/10.1051/0004-6361/201118505)
76. M. P. Bernstein, S. A. Sandford, L. J. Allamandola, S. Chang, M. A. Scharberg, Organic compounds produced by photolysis of realistic interstellar and cometary ice analogs containing methanol. *Astrophys. J.* **454**, 327–344 (1995). [doi:10.1086/176485](https://doi.org/10.1086/176485)
77. T. Butscher, F. Duvernay, G. Danger, R. Torro, G. Lucas, Y. Carissan, D. Hagebaum-Reignier, T. Chiavassa, Radical-assisted polymerization in interstellar ice analogues: Formyl radical and polyoxymethylene. *Mon. Not. R. Astron. Soc.* **486**, 1953–1963 (2019). [doi:10.1093/mnras/stz879](https://doi.org/10.1093/mnras/stz879)
78. M. Piquette, A. R. Poppe, E. Bernardoni, J. R. Szalay, D. James, M. Horányi, S. A. Stern, H. Weaver, J. Spencer, C. Olkin, Student Dust Counter: Status report at 38 au. *Icarus* **321**, 116–125 (2019). [doi:10.1016/j.icarus.2018.11.012](https://doi.org/10.1016/j.icarus.2018.11.012)
79. A. R. Poppe, C. M. Lisse, M. Piquette, M. Zemcov, M. Horányi, D. James, J. R. Szalay, E. Bernardoni, S. A. Stern, Constraining the Solar System’s debris disk with in situ New

- Horizons measurements from the Edgeworth-Kuiper belt. *Astrophys. J.* **881**, L12 (2019).  
[doi:10.3847/2041-8213/ab322a](https://doi.org/10.3847/2041-8213/ab322a)
80. S. A. Stern, ISM-induced erosion and gas-dynamical drag in the Oort cloud. *Icarus* **84**, 447–466 (1990). [doi:10.1016/0019-1035\(90\)90048-E](https://doi.org/10.1016/0019-1035(90)90048-E)
81. S. A. Stern, The evolution of comets in the Oort cloud and Kuiper belt. *Nature* **424**, 639–642 (2003). [doi:10.1038/nature01725](https://doi.org/10.1038/nature01725) [Medline](#)
82. S. D. Benecchi, K. S. Noll, W. M. Grundy, M. W. Buie, D. C. Stephens, H. F. Levison, The correlated colors of transneptunian binaries. *Icarus* **200**, 292–303 (2009).  
[doi:10.1016/j.icarus.2008.10.025](https://doi.org/10.1016/j.icarus.2008.10.025)
83. O. Mousis, A. Guilbert-Lepoutre, B. Brugger, L. Jorda, J. S. Kargel, A. Bouquet, A.-T. Auger, P. Lamy, P. Vernazza, N. Thomas, H. Sierks, Pits formation from volatile outgassing on 67P/Churyumov-Gerasimenko. *Astrophys. J.* **814**, L5 (2015).  
[doi:10.1088/2041-8205/814/1/L5](https://doi.org/10.1088/2041-8205/814/1/L5)
84. J. B. Vincent, D. Bodewits, S. Besse, H. Sierks, C. Barbieri, P. Lamy, R. Rodrigo, D. Koschny, H. Rickman, H. U. Keller, J. Agarwal, M. F. A'Hearn, A.-T. Auger, M. A. Barucci, J.-L. Bertaux, I. Bertini, C. Capanna, G. Cremonese, V. Da Deppo, B. Davidsson, S. Debei, M. De Cecco, M. R. El-Maarry, F. Ferri, S. Fornasier, M. Fulle, R. Gaskell, L. Giacomini, O. Groussin, A. Guilbert-Lepoutre, P. Gutierrez-Marques, P. J. Gutiérrez, C. Güttler, N. Hoekzema, S. Höfner, S. F. Hviid, W.-H. Ip, L. Jorda, J. Knollenberg, G. Kovacs, R. Kramm, E. Kührt, M. Küppers, F. La Forgia, L. M. Lara, M. Lazzarin, V. Lee, C. Leyrat, Z.-Y. Lin, J. J. Lopez Moreno, S. Lowry, S. Magrin, L. Maquet, S. Marchi, F. Marzari, M. Massironi, H. Michalik, R. Moissl, S. Mottola, G. Naletto, N. Oklay, M. Pajola, F. Preusker, F. Scholten, N. Thomas, I. Toth, C. Tubiana, Large heterogeneities in comet 67P as revealed by active pits from sinkhole collapse. *Nature* **523**, 63–66 (2015). [doi:10.1038/nature14564](https://doi.org/10.1038/nature14564) [Medline](#)
85. P. Ayotte, R. S. Smith, K. P. Stevenson, Z. Dohnálek, G. A. Kimmel, B. D. Kay, Effect of porosity on the adsorption, desorption, trapping, and release of volatile gases by amorphous solid water. *J. Geophys. Res.* **106**, 33387–33392 (2001).  
[doi:10.1029/2000JE001362](https://doi.org/10.1029/2000JE001362)
86. A. Bar-Nun, G. Notesco, T. Owen, Trapping of N<sub>2</sub>, CO and Ar in amorphous ice: Application to comets. *Icarus* **190**, 655–659 (2007). [doi:10.1016/j.icarus.2007.03.021](https://doi.org/10.1016/j.icarus.2007.03.021)
87. M. Massironi, E. Simioni, F. Marzari, G. Cremonese, L. Giacomini, M. Pajola, L. Jorda, G. Naletto, S. Lowry, M. R. El-Maarry, F. Preusker, F. Scholten, H. Sierks, C. Barbieri, P. Lamy, R. Rodrigo, D. Koschny, H. Rickman, H. U. Keller, M. F. A'Hearn, J. Agarwal, A.-T. Auger, M. A. Barucci, J.-L. Bertaux, I. Bertini, S. Besse, D. Bodewits, C. Capanna, V. Da Deppo, B. Davidsson, S. Debei, M. De Cecco, F. Ferri, S. Fornasier, M. Fulle, R. Gaskell, O. Groussin, P. J. Gutiérrez, C. Güttler, S. F. Hviid, W.-H. Ip, J. Knollenberg, G.



- Kovacs, R. Kramm, E. Kührt, M. Küppers, F. La Forgia, L. M. Lara, M. Lazzarin, Z.-Y. Lin, J. J. Lopez Moreno, S. Magrin, H. Michalik, S. Mottola, N. Oklay, A. Pommerol, N. Thomas, C. Tubiana, J.-B. Vincent, Two independent and primitive envelopes of the bilobate nucleus of comet 67P. *Nature* **526**, 402–405 (2015). [doi:10.1038/nature15511](https://doi.org/10.1038/nature15511)  
[Medline](#)
88. L. Penasa, M. Massironi, G. Naletto, E. Simioni, S. Ferrari, M. Pajola, A. Lucchetti, F. Preusker, F. Scholten, L. Jorda, R. Gaskell, F. Ferri, F. Marzari, B. Davidsson, S. Mottola, H. Sierks, C. Barbieri, P. L. Lamy, R. Rodrigo, D. Koschny, H. Rickman, H. U. Keller, J. Agarwal, M. F. A'Hearn, M. A. Barucci, J. L. Bertaux, I. Bertini, G. Cremonese, V. Da Deppo, S. Debei, M. De Cecco, J. Deller, C. Feller, S. Fornasier, E. Frattin, M. Fulle, O. Groussin, P. J. Gutierrez, C. Güttler, M. Hofmann, S. F. Hviid, W. H. Ip, J. Knollenberg, J. R. Kramm, E. Kührt, M. Küppers, F. La Forgia, L. M. Lara, M. Lazzarin, J.-C. Lee, J. J. Lopez Moreno, N. Oklay, X. Shi, N. Thomas, C. Tubiana, J. B. Vincent, A three-dimensional modelling of the layered structure of comet 67P/Churyumov-Gerasimenko. *Mon. Not. R. Astron. Soc.* **469** (suppl. 2), S741–S754 (2017). [doi:10.1093/mnras/stx2899](https://doi.org/10.1093/mnras/stx2899)
89. C. J. A. Howett, A. H. Parker, C. B. Olkin, D. C. Reuter, K. Ennico, W. M. Grundy, A. L. Graps, K. P. Harrison, H. B. Throop, M. W. Buie, J. R. Lovering, S. B. Porter, H. A. Weaver, L. A. Young, S. A. Stern, R. A. Beyer, R. P. Binzel, B. J. Buratti, A. F. Cheng, J. C. Cook, D. P. Cruikshank, C. M. Dalle Ore, A. M. Earle, D. E. Jennings, I. R. Linscott, A. W. Lunsford, J. W. Parker, S. Phillippe, S. Protopapa, E. Quirico, P. M. Schenk, B. Schmitt, K. N. Singer, J. R. Spencer, J. A. Stansberry, C. C. C. Tsang, G. E. Weigle II, A. J. Verbiscer, Inflight radiometric calibration of New Horizons' Multispectral Visible Imaging Camera (MVIC). *Icarus* **287**, 140–151 (2017). [doi:10.1016/j.icarus.2016.12.007](https://doi.org/10.1016/j.icarus.2016.12.007)
90. C. M. Dalle Ore, S. Protopapa, J. C. Cook, W. M. Grundy, D. P. Cruikshank, A. J. Verbiscer, K. Ennico, C. B. Olkin, S. A. Stern, H. A. Weaver, L. A. Young, Ices on Charon: Distribution of H<sub>2</sub>O and NH<sub>3</sub> from New Horizons LEISA observations. *Icarus* **300**, 21–32 (2018). [doi:10.1016/j.icarus.2017.08.026](https://doi.org/10.1016/j.icarus.2017.08.026)
91. C. H. Acton Jr., Ancillary data services of NASA's Navigation and Ancillary Information Facility. *Planet. Space Sci.* **44**, 65–70 (1996). [doi:10.1016/0032-0633\(95\)00107-7](https://doi.org/10.1016/0032-0633(95)00107-7)
92. J. C. Cook, C. M. Dalle Ore, S. Protopapa, R. P. Binzel, D. P. Cruikshank, A. Earle, W. M. Grundy, K. Ennico, C. Howett, D. E. Jennings, A. W. Lunsford, C. B. Olkin, A. H. Parker, S. Phillippe, D. Reuter, B. Schmitt, K. Singer, J. A. Stansberry, S. A. Stern, A. Verbiscer, H. A. Weaver, L. A. Young, J. Hanley, F. Alketbi, G. L. Thompson, L. A. Pearce, G. E. Lindberg, S. C. Tegler, The distribution of H<sub>2</sub>O, CH<sub>3</sub>OH, and hydrocarbon-ices on Pluto: Analysis of New Horizons spectral images. *Icarus* **331**, 148–169 (2019). [doi:10.1016/j.icarus.2018.09.012](https://doi.org/10.1016/j.icarus.2018.09.012)

93. A. F. McGuire, B. W. Hapke, An experimental study of light scattering by large, irregular particles. *Icarus* **113**, 134–155 (1995). [doi:10.1006/icar.1995.1012](https://doi.org/10.1006/icar.1995.1012)
94. F. Rouleau, P. G. Martin, Shape and clustering effects on the optical properties of amorphous carbon. *Astrophys. J.* **377**, 526–540 (1991). [doi:10.1086/170382](https://doi.org/10.1086/170382)
95. W. M. Grundy, B. Schmitt, The temperature-dependent near-infrared absorption spectrum of hexagonal H<sub>2</sub>O ice. *J. Geophys. Res.* **103**, 25809–25822 (1998). [doi:10.1029/98JE00738](https://doi.org/10.1029/98JE00738)
96. A. Zanchet, Y. Rodríguez-Lazcano, Ó. Gálvez, V. J. Herrero, R. Escibano, B. Maté, Optical constants of NH<sub>3</sub> and NH<sub>3</sub>:N<sub>2</sub> amorphous ices in the near-infrared and mid-infrared regions. *Astrophys. J.* **777**, 26 (2013). [doi:10.1088/0004-637X/777/1/26](https://doi.org/10.1088/0004-637X/777/1/26)
97. T. N. Titus, G. E. Cushing, Thermal diffusivity experiment at the Grand Falls dune field. Third International Planetary Dunes Workshop, 12 to 15 June 2012, Flagstaff, AZ. LPI Contribution No. 7044.
98. A. P. Ingersoll, T. Svitek, B. C. Murray, Stability of polar frosts in spherical bowl-shaped craters on the moon, Mercury, and Mars. *Icarus* **100**, 40–47 (1992). [doi:10.1016/0019-1035\(92\)90016-Z](https://doi.org/10.1016/0019-1035(92)90016-Z)