

Supporting Information for Projected Changes to Hydroclimate Seasonality in the Continental United States

Kate Marvel^{1,2}, Benjamin I. Cook¹, Céline Bonfils³, Jason E. Smerdon⁴, A.

Park Williams, Haibo Liu⁴

¹NASA Goddard Institute for Space Studies, New York, NY 10025

²Center for Climate Systems Research, Columbia University, New York, NY 10025

³Lawrence Livermore National Laboratory, Livermore CA 94551

⁴Lamont-Doherty Earth Observatory, Palisades, NY

Contents of this file

1. Figures S1 to S7

Introduction These supporting files consist of seven figures with eight panels each, showing the multi-model ensemble (MME) average time evolution of hydroclimate variables under the high-forcing SSP5-8.6 scenario. Each line represents the MME average monthly value for that variable; warmer colors correspond to later years.

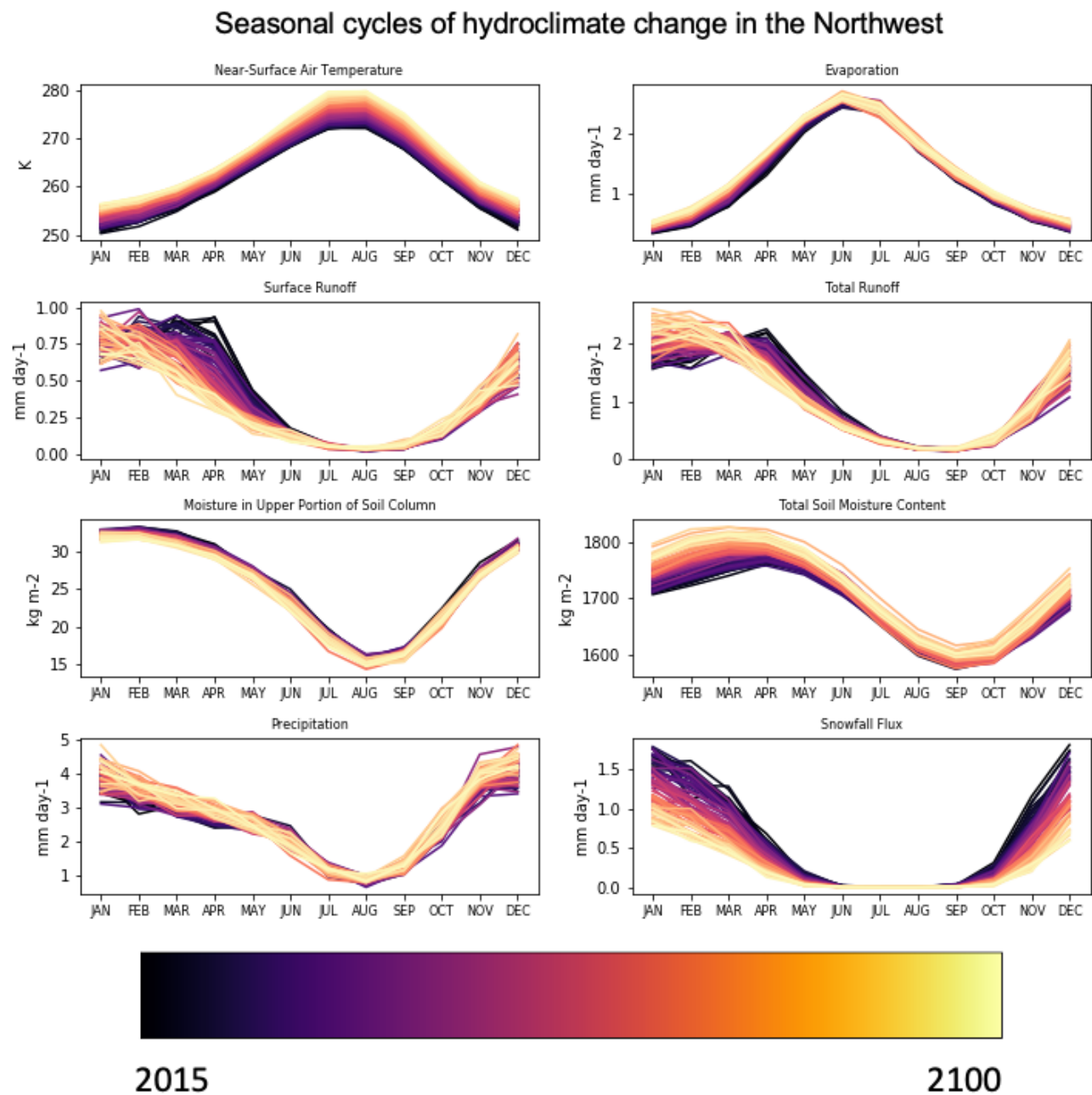
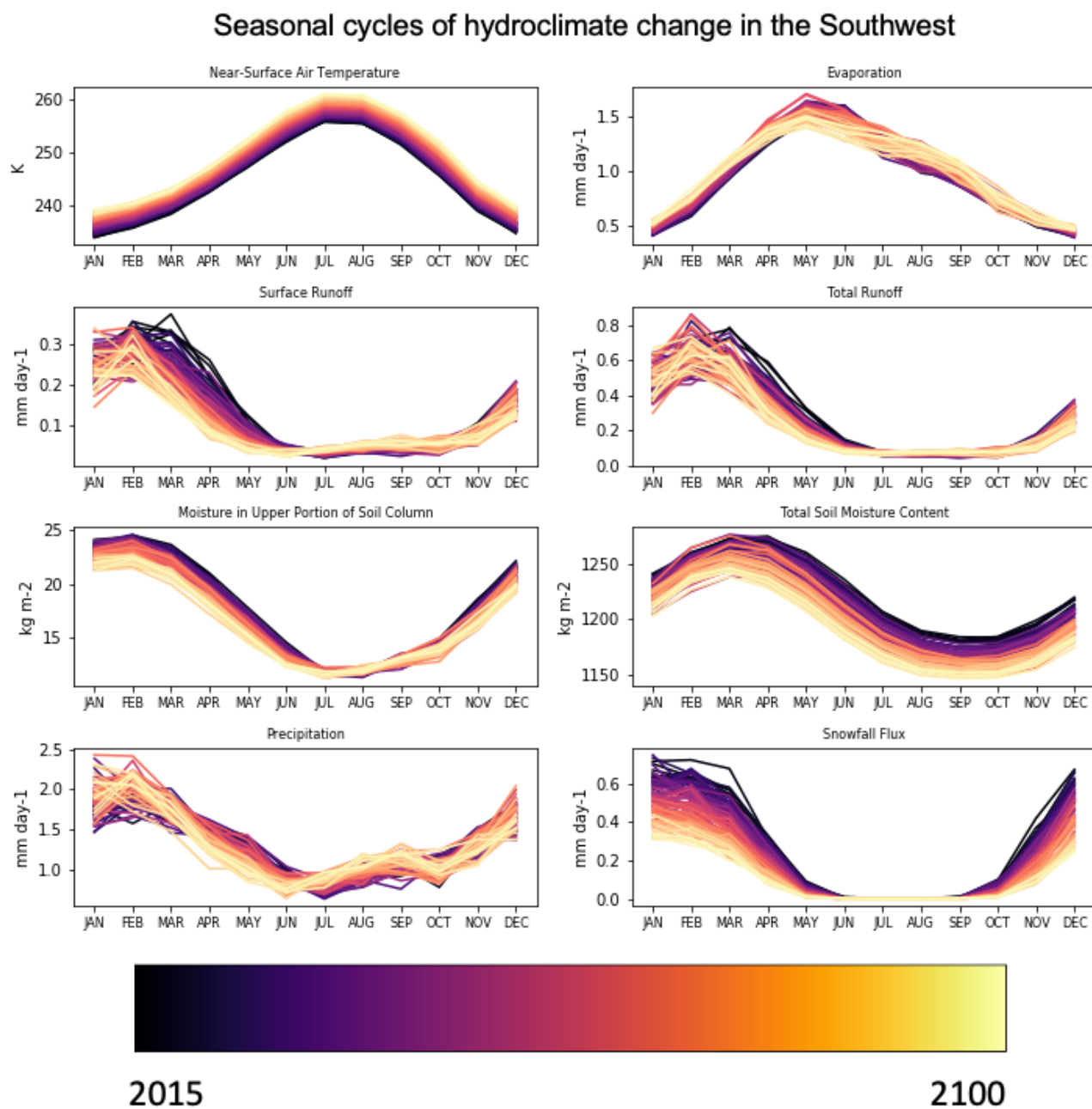
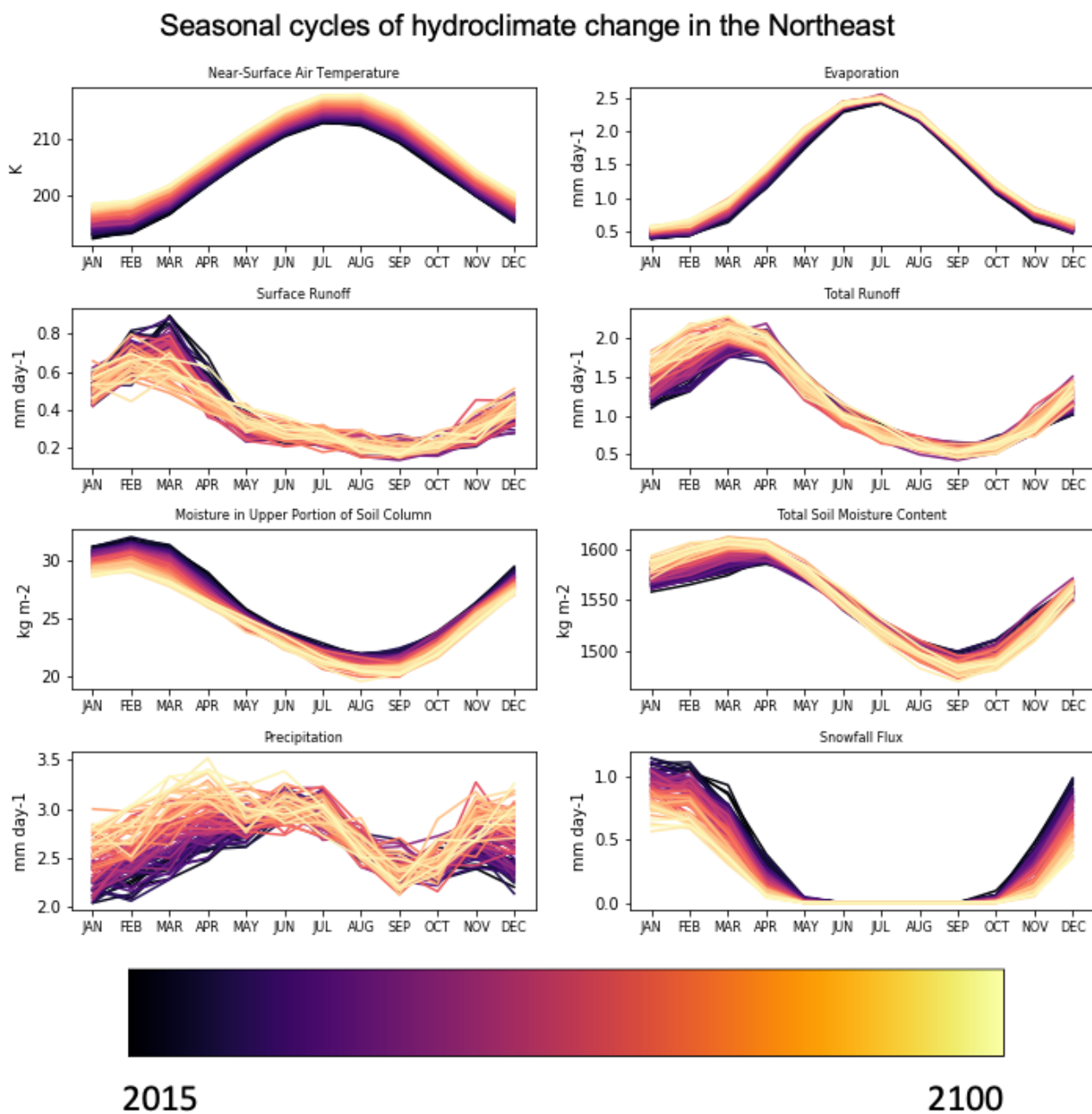


Figure S1. Multi-model ensemble average seasonal cycles in the Northwest for each year in 2015-2100 inclusive for the SSP5-8.5 scenario.



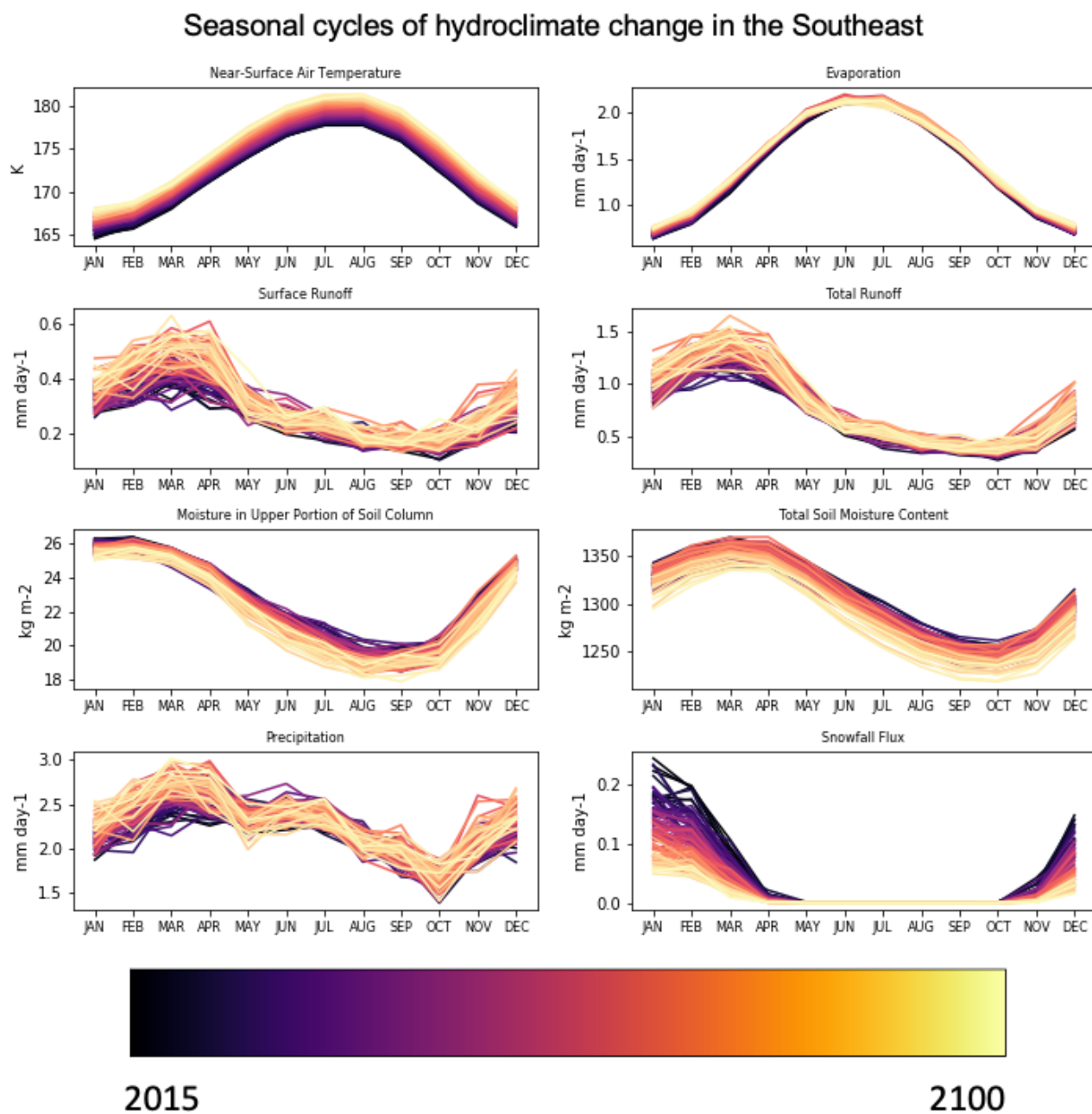
July 6, 2021, 8:27am

Figure S2. As in fig S1, but for the Southwest.



July 6, 2021, 8:27am

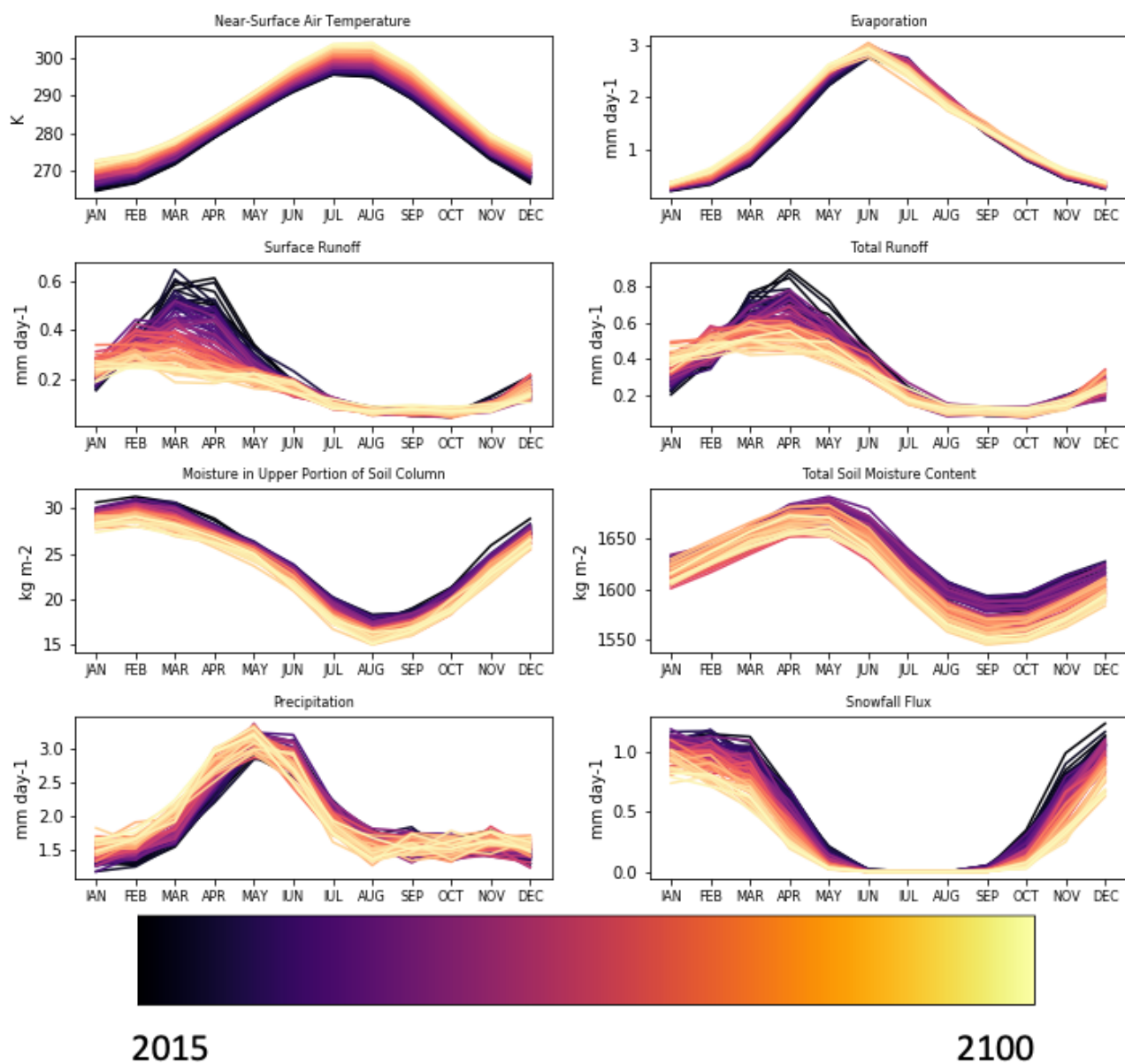
Figure S3. As in fig S1, but for the upper Great Plains.



July 6, 2021, 8:27am

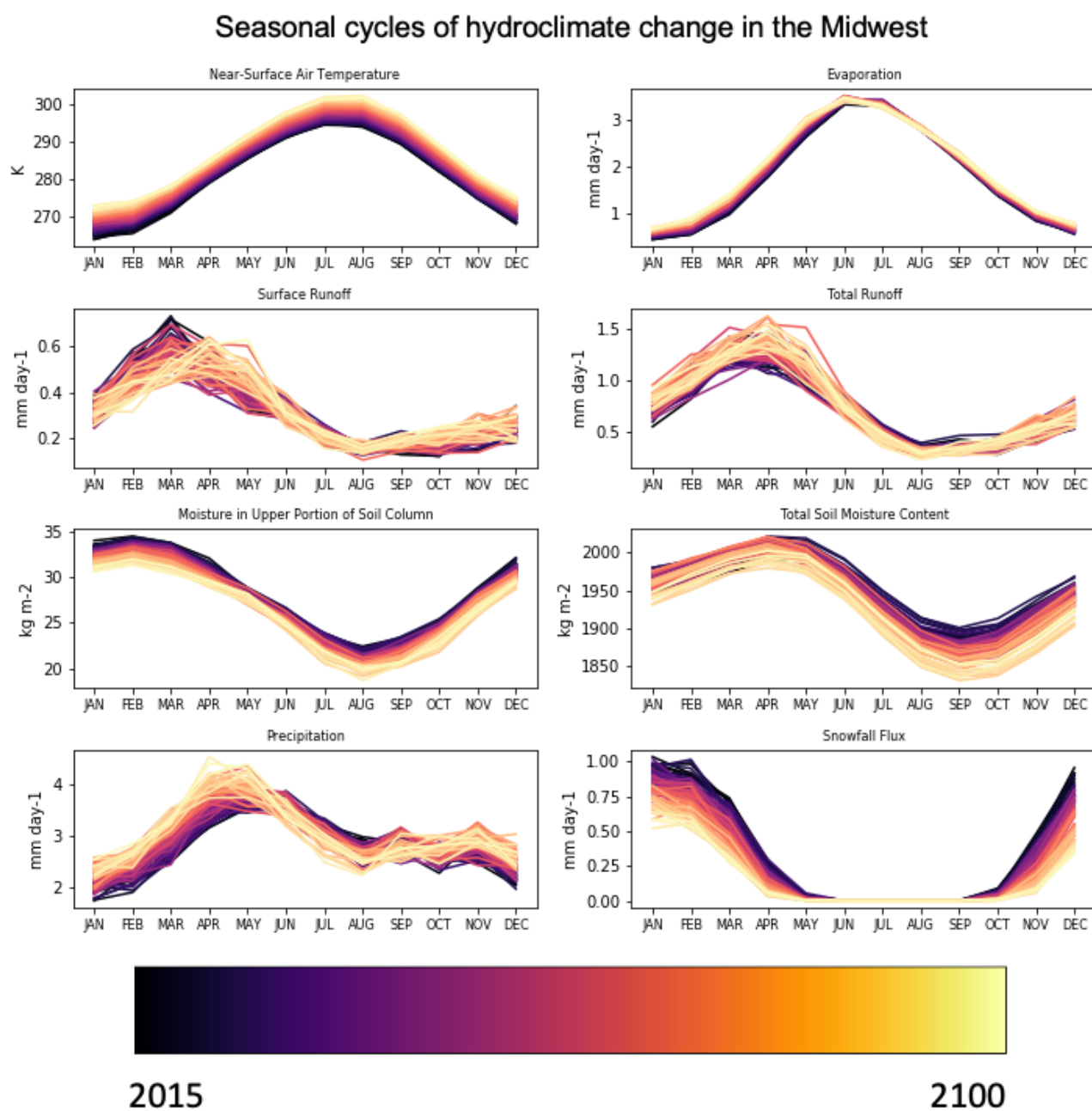
Figure S4. As in fig S1, but for the lower Great Plains.

Seasonal cycles of hydroclimate change in the upper Great Plains



July 6, 2021, 8:27am

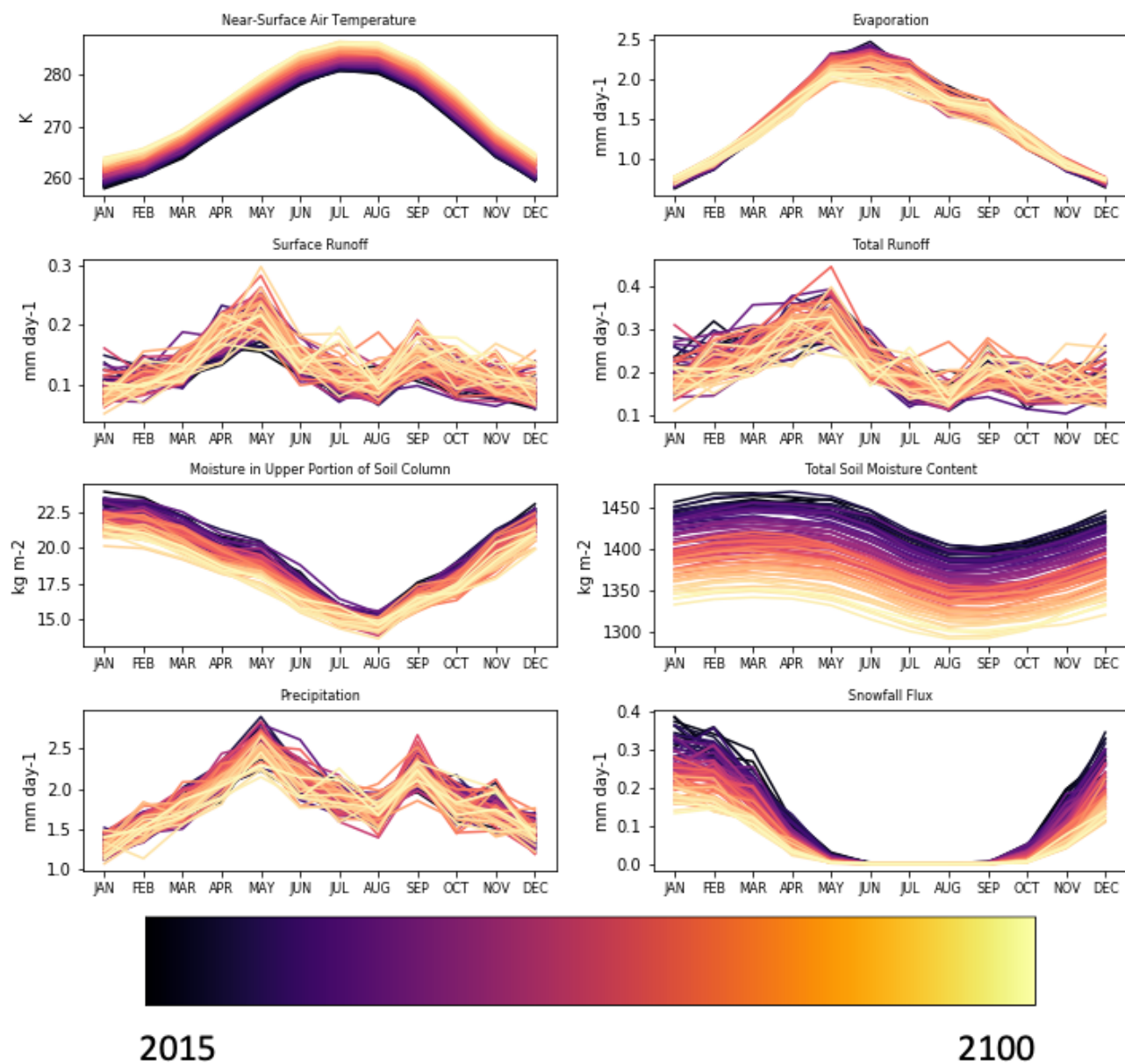
Figure S5. As in fig S1, but for the Midwest.



July 6, 2021, 8:27am

Figure S6. As in fig S1, but for the Northeast.

Seasonal cycles of hydroclimate change in the lower Great Plains



July 6, 2021, 8:27am

Figure S7. As in fig S1, but for the Southeast.