

# **Supplementary information for: Seasonal forecasting skill for the High Mountain Asia region in the Goddard Earth Observing System**

5 Elias C. Massoud<sup>1,2</sup>, Lauren Andrews<sup>3</sup>, Rolf Reichle<sup>3</sup>, Andrea Molod<sup>3</sup>, Jongmin Park<sup>4</sup>, Sophie Ruehr<sup>1</sup>,  
Manuela Girotto<sup>1</sup>

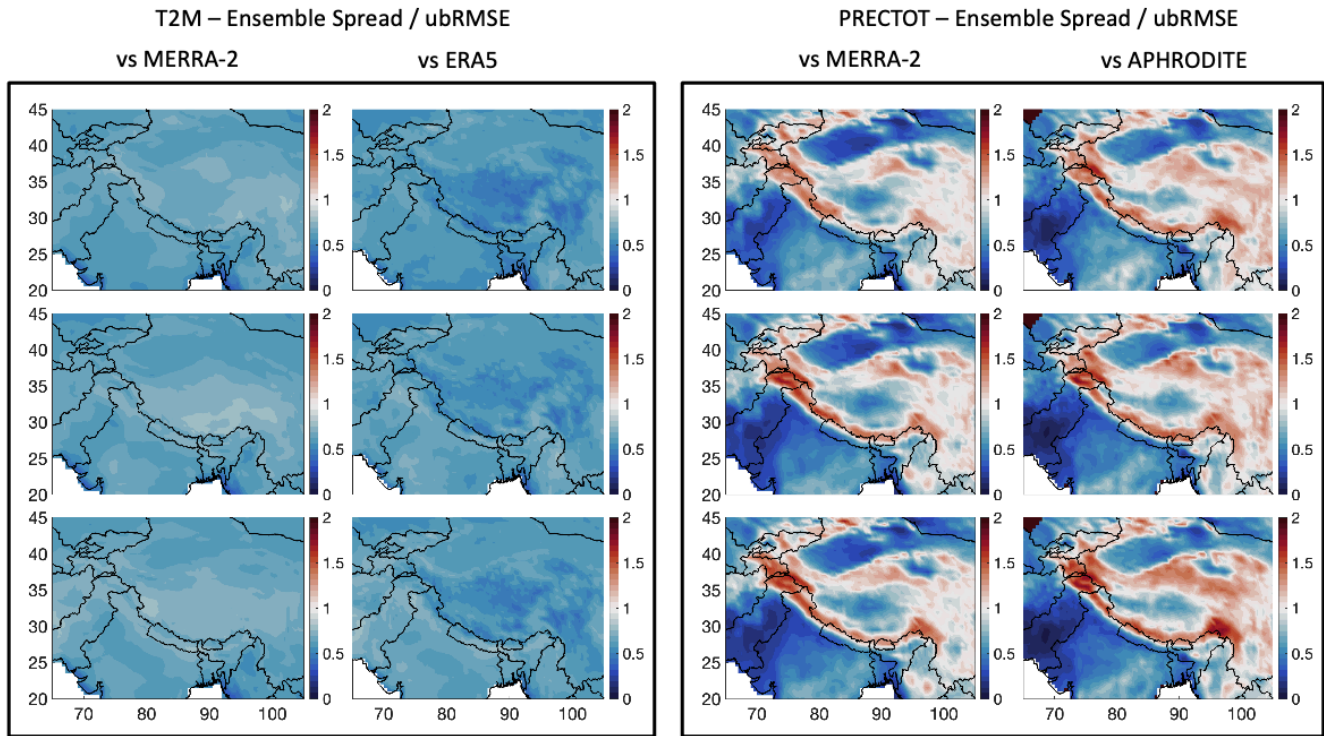
<sup>1</sup>University of California Berkeley, Department of Environmental Science, Policy, and Management, Berkeley, CA, USA.

<sup>2</sup>Computational Sciences and Engineering Division, Oak Ridge National Laboratory, Oak Ridge, TN, USA.

<sup>3</sup>NASA Goddard Space Flight Center, Global Modeling & Assimilation Office, Greenbelt, MD, USA.

<sup>4</sup>Department of Environmental Engineering, Korea National University of Transportation, Chungju, Republic of Korea

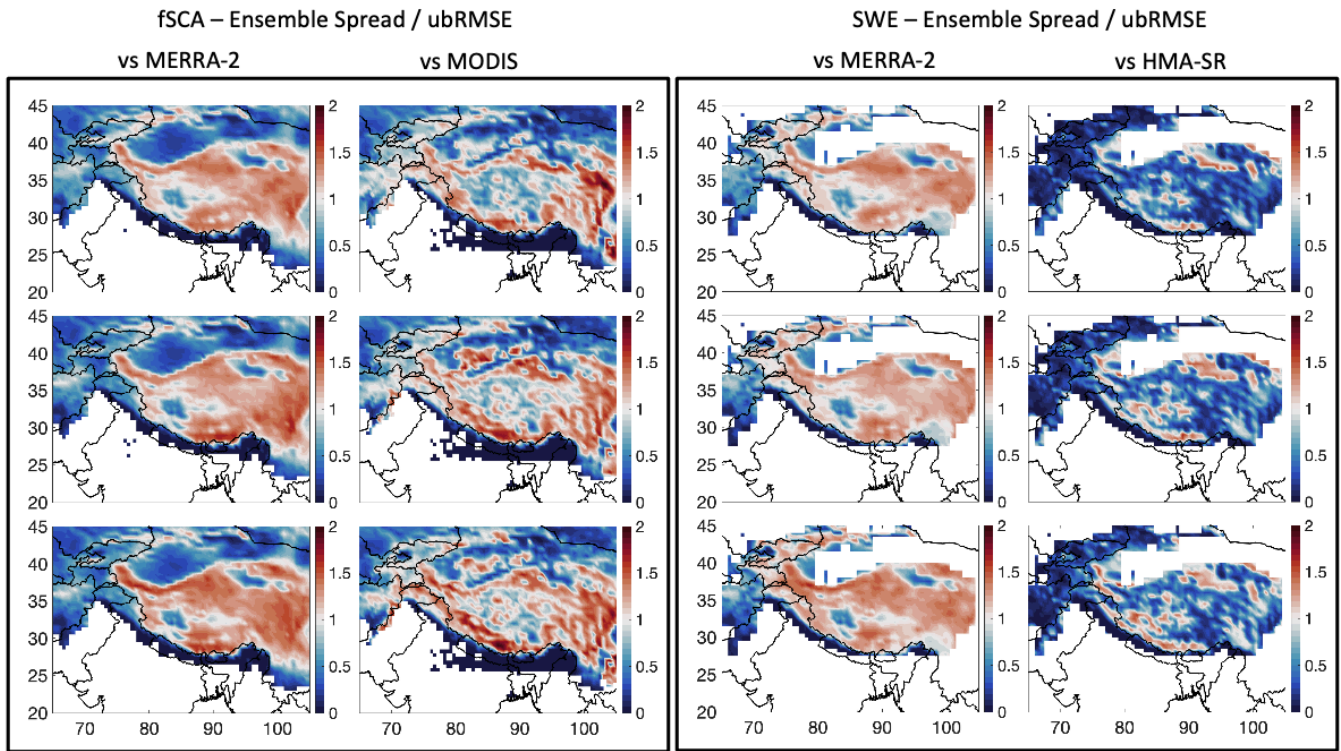
10 *Correspondence to:* Elias C. Massoud (massoudec@ornl.gov)



15

Figure S1: These plots show the reliability of the S2S forecasts for T2M and PRECTOT, calculated as the ensemble spread divided by the ubRMSE, information that can be found in Figures 7-8. For these plots, blue indicates the forecasts are overconfident for that region, meaning there is a smaller spread compared to what the error is. Red shows the opposite, indicating that the forecasts are underconfident for that region, which means there is a larger spread compared to what the error is. The rows of plots show the 1-month (top), 2-month (center), and 3-month (bottom) forecasts.

20



25 **Figure S2:** These plots show the reliability of the S2S forecasts for fSCA and SWE, calculated as the ensemble spread divided by the ubRMSE, information that can be found in Figures 9-10. For these plots, blue indicates the forecasts are overconfident for that region, meaning there is a smaller spread compared to what the error is. Red shows the opposite, indicating that the forecasts are underconfident for that region, which means there is a larger spread compared to what the error is. The rows of plots show the 1-month (top), 2-month (center), and 3-month (bottom) forecasts.

30

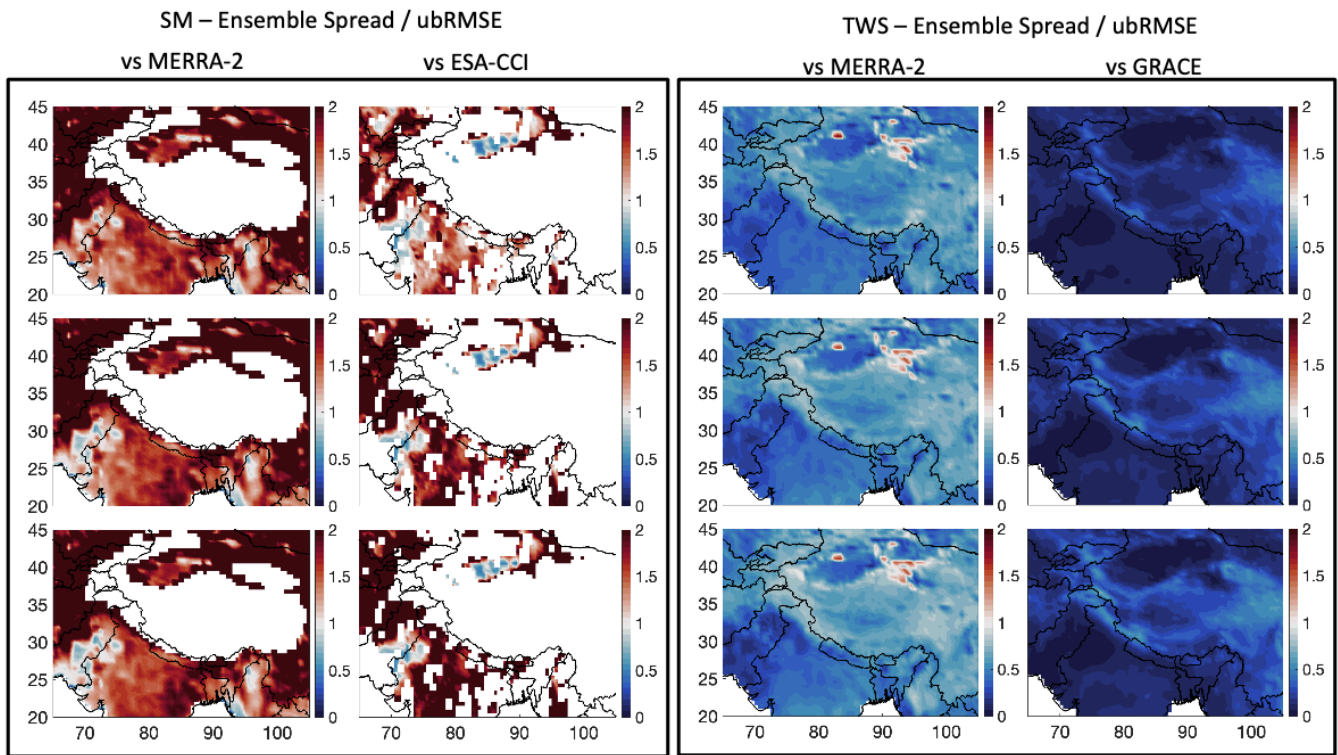


Figure S3: These plots show the reliability of the S2S forecasts for SM and TWS, calculated as the ensemble spread divided by the ubRMSE, information that can be found in Figures 11-12. For these plots, blue indicates the forecasts are overconfident for that region, meaning there is a smaller spread compared to what the error is. Red shows the opposite, indicating that the forecasts are underconfident for that region, which means there is a larger spread compared to what the error is. The rows of plots show the 1-month (top), 2-month (center), and 3-month (bottom) forecasts.

35