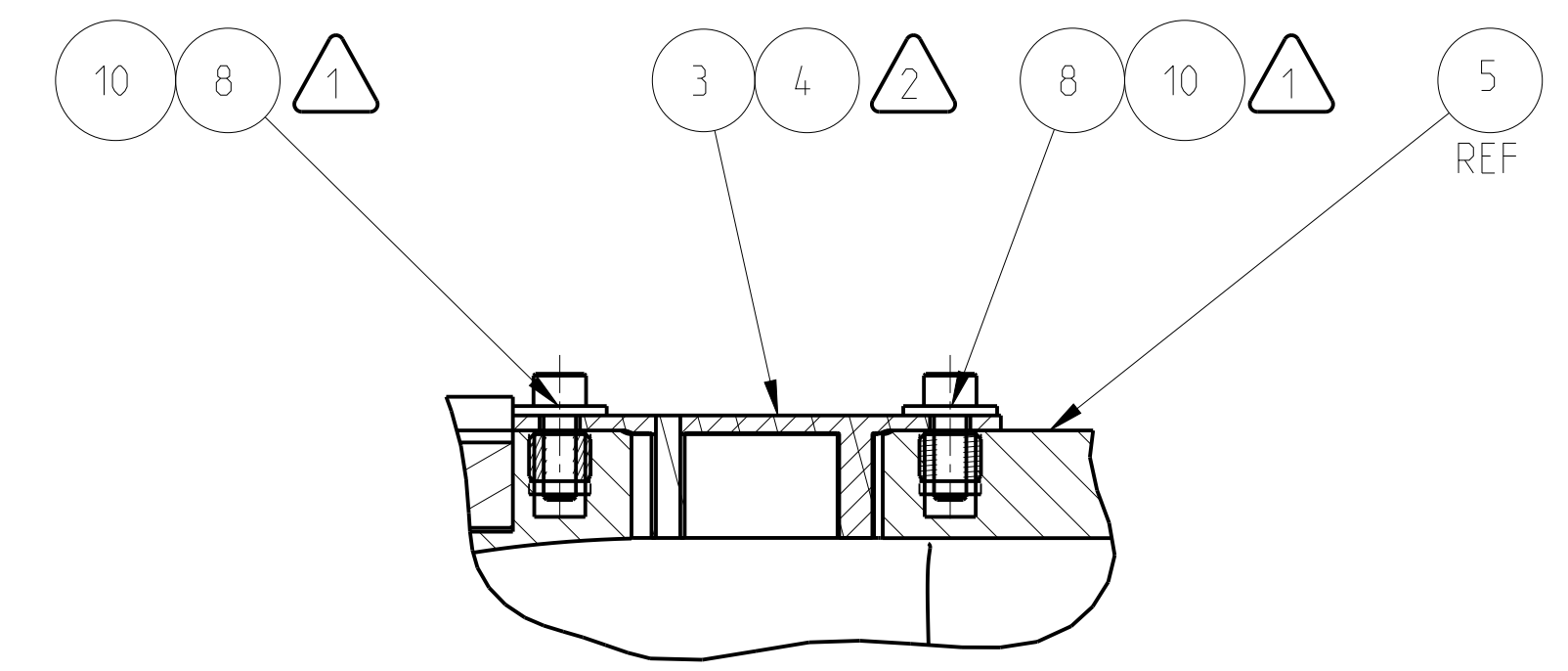
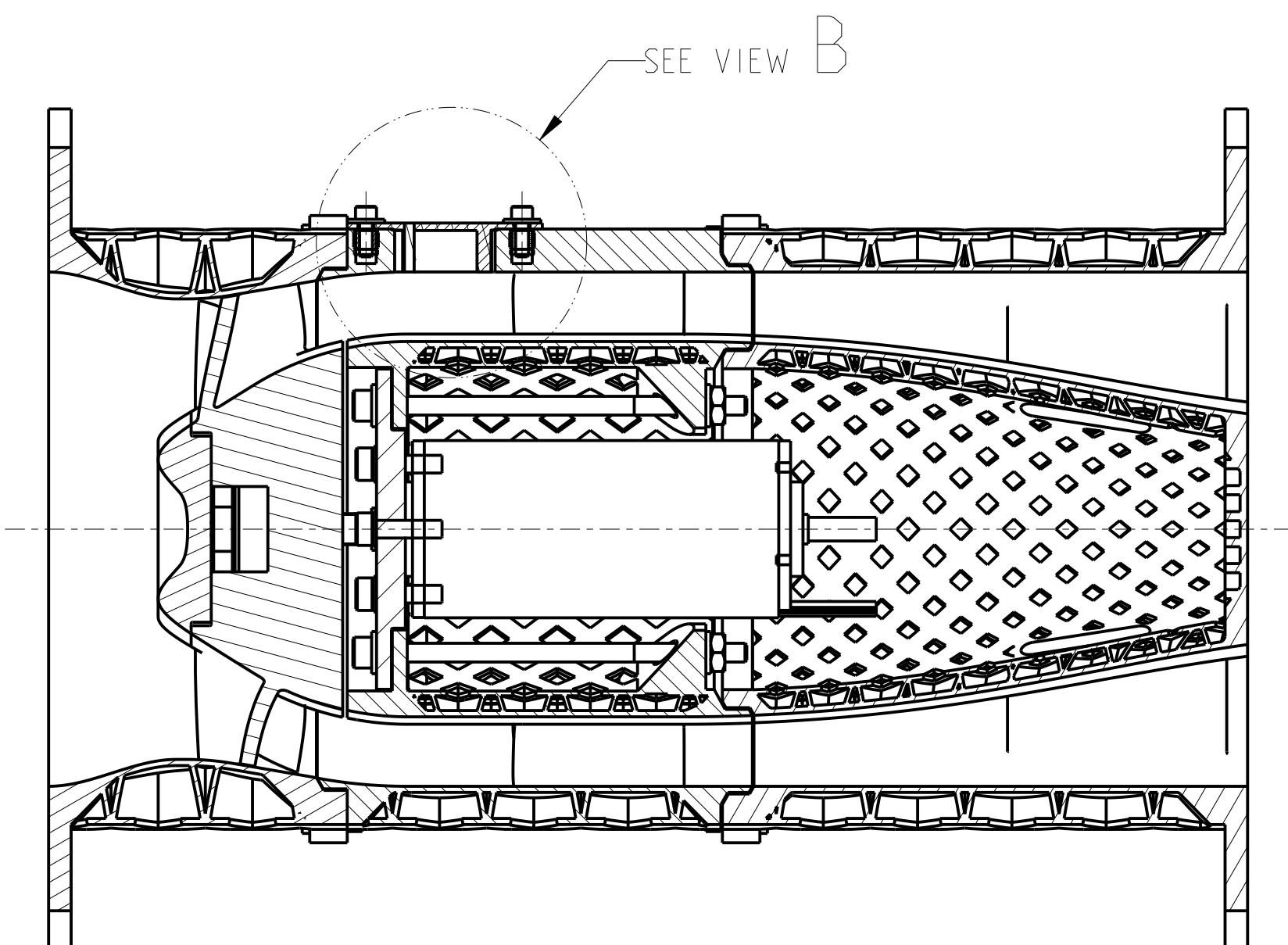
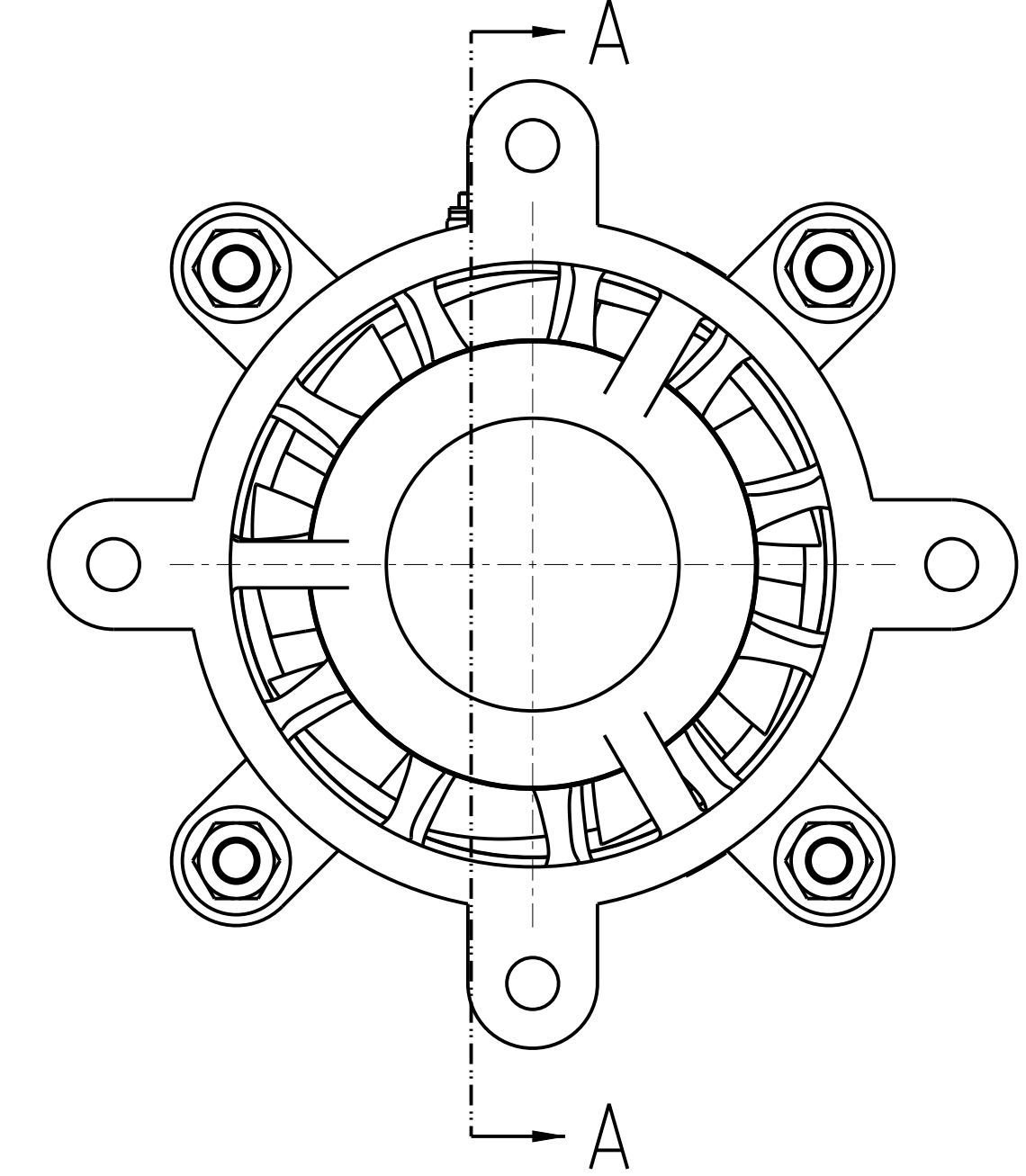
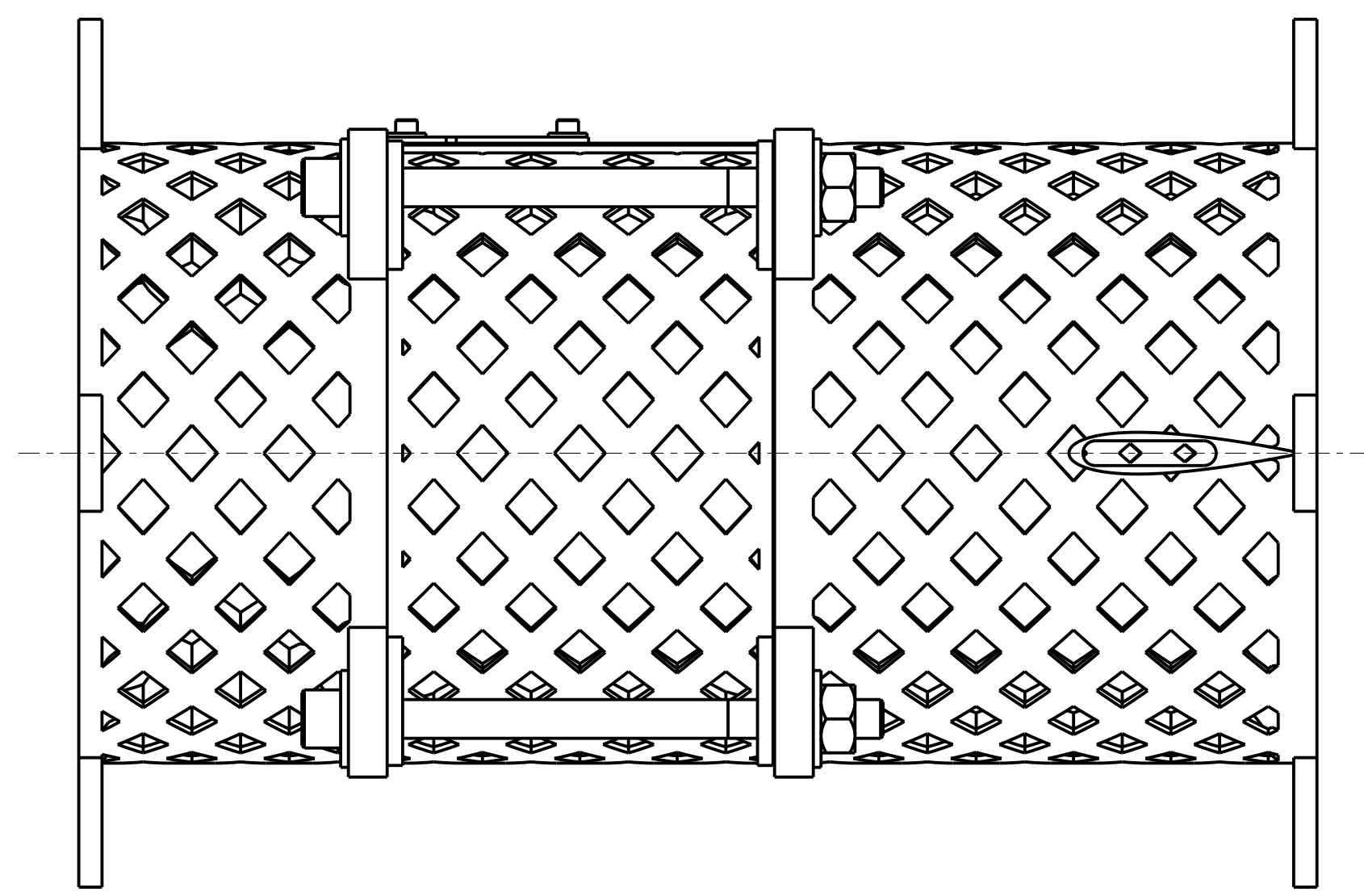
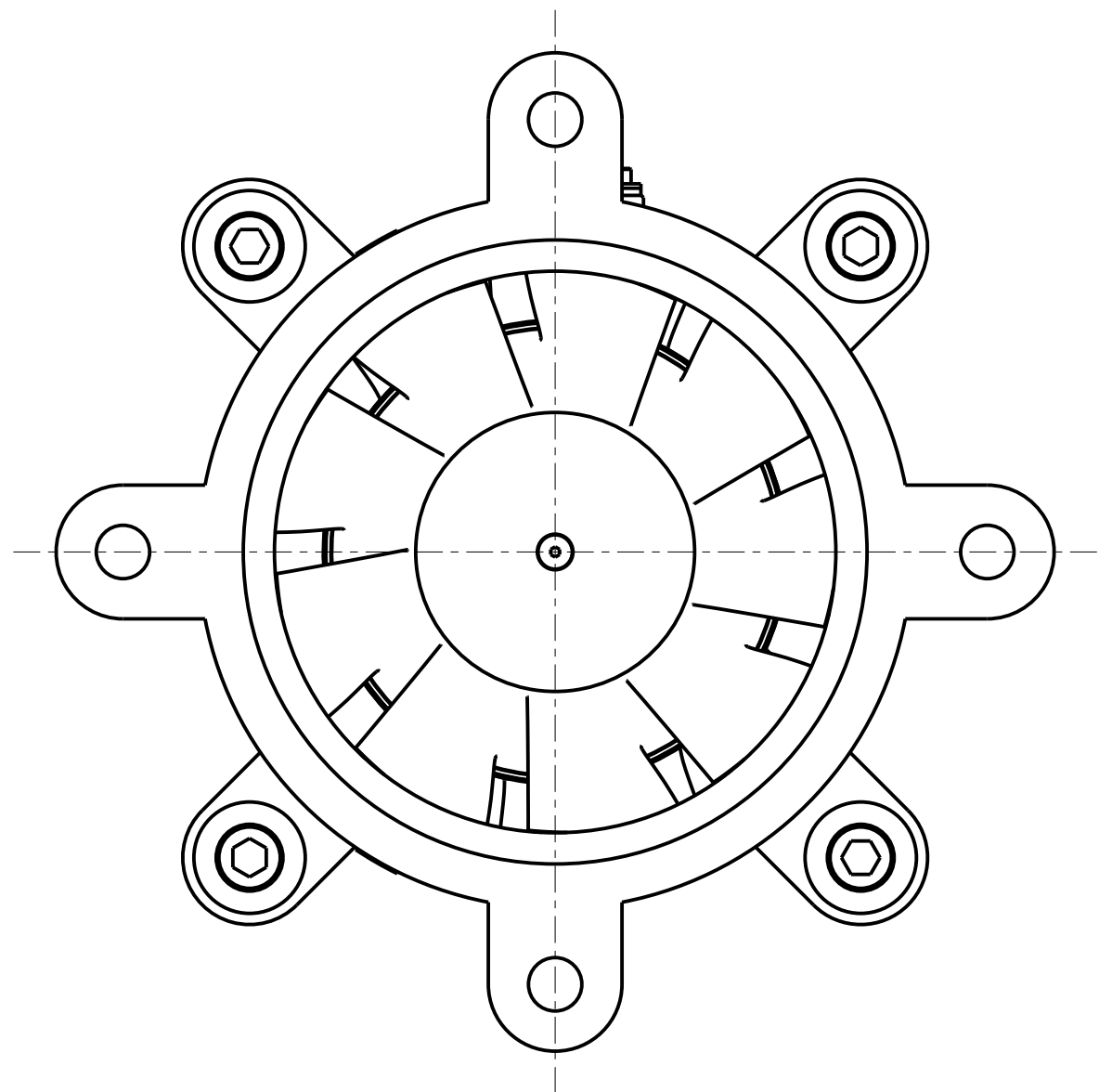
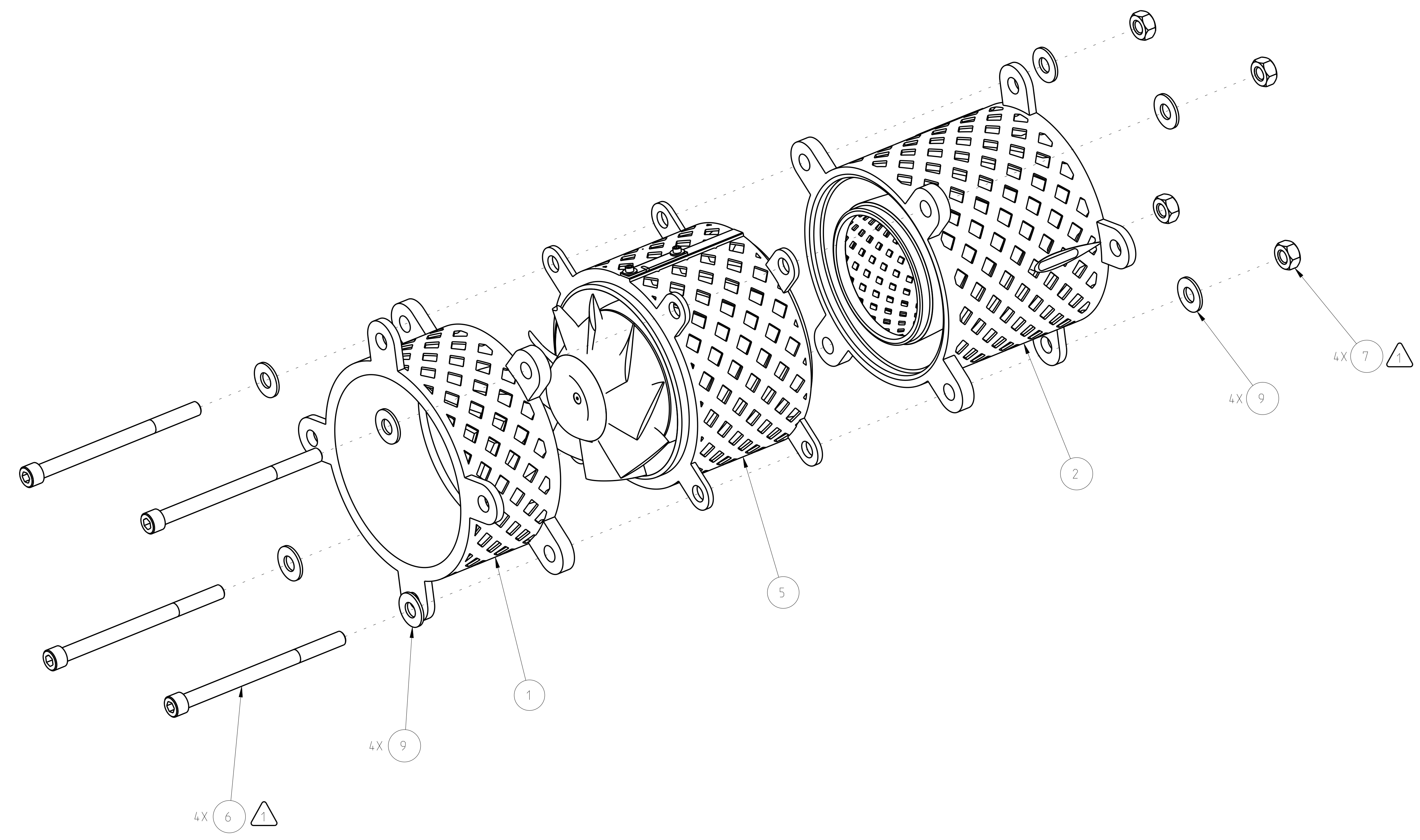


⚠ TORQUE VALUES DETERMINED BY CONTRACTOR PER "AS AGREED UPON" BY "STATEMENT OF WORK".

⚠ ALTERNATE ASSEMBLY CONFIGURATION SUBSTITUTE 200501MRA103 (STATOR PLUG-1) (FN3) IN PLACE OF 2005010MRA105 (STATOR PLUG-3) (FN4).

REVISION HISTORY			
ZONE	REV	DESCRIPTION	DATE
-	A	GENERAL REVISION	2021/04/30



SECTION A-A
(REMOVED VIEW)

DETAIL B
SCALE 2/1

FIND NO	QTY	REDD	CAGE CODE	PART OR IDENT NO	NOMENCLATURE OR DESCRIPTION	NOTES OR REMARKS
10	2			90107A003	WASHER, FLAT, FOR NO. 2-56 SCREW 316 STAINLESS STEEL	MCMASTER-CARR PART (OR EQUIVALENT)
9	8			90107A029	WASHER FOR .250 FASTENER. MAT'L: 316 STAINLESS STEEL	MCMASTER-CARR PART (OR EQUIVALENT)
⚠ 8	2			92196A077	.086-56 UNC-3A X .250 LONG SOCKET HEAD CAP SCREW, 18-8 STAINLESS STEEL	MCMASTER-CARR PART (OR EQUIVALENT)
⚠ 7	4			95462A505	.250-28 UNF-2B HEX NUT, ZINC- PLATED, GRADE 5 STEEL, PER ASME B18.2.2	MCMASTER-CARR PART (OR EQUIVALENT)
⚠ 6	4			92196A342	.250-28 UNF-3A X 3.5 LONG, SOCKET HEAD CAP SCREW, MATERIAL: 18-8 STAINLESS STEEL	MCMASTER-CARR PART (OR EQUIVALENT)
5	1		10FP5	200501MRA110	QUIET SPACE FAN ROTOR ASSEMBLY	
⚠ 4	1		10FP5	200501MRA105	QUIET SPACE FAN STATOR PLUG - 3	
⚠ 3	1		10FP5	200501MRA103	QUIET SPACE FAN STATOR PLUG - 1	
2	1		10FP5	200501MRA102	QUIET SPACE FAN AFT STRUTS	
1	1		10FP5	200501MRA101	QUIET SPACE FAN INLET	

UNLESS OTHERWISE SPECIFIED DIMENSIONS ARE IN INCHES X.X ± 0.03 X.XXX ± 0.005 X.XX ± 0.01 ANGLE ± 0° 30' BREAK EDGES .01-.02		DATE: 2020/10/02	NATIONAL AERONAUTICS AND SPACE ADMINISTRATION JOHN H. GLENN RESEARCH CENTER LEWIS FIELD, CLEVELAND, OHIO
MODELER: LMP/GOODMAN	ENGINEER: LMP/GOODMAN	STATE: Released	
CONTRACTOR:	APPLICATION:	THIRD ANGLE PROJECTION	TITLE: QUIET SPACE FAN FAN ASSEMBLY
CONTRACT NO.:	USED ON:	W INDCHELL PRODUCT	SIZE: E
		200501.Quiet.Space.Fa	CAGE CODE: 10FP5
		200501MRA100_FAN_ASSEMBLY	DWG NO: 200501MRA100
			SCALE: 1/1
			REV: A