



SY32A-02

Localizing Earth Science:

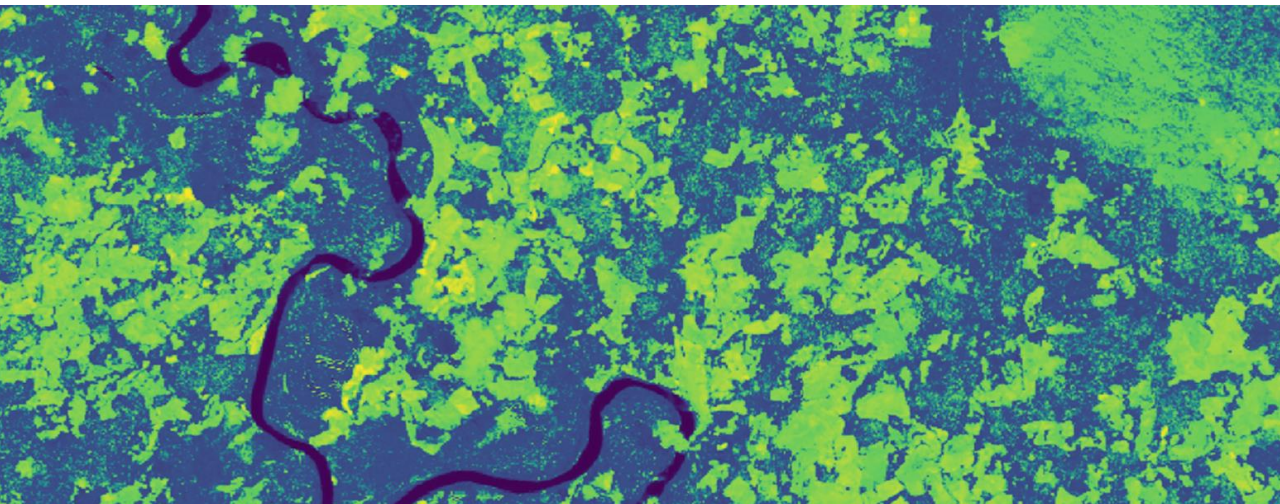
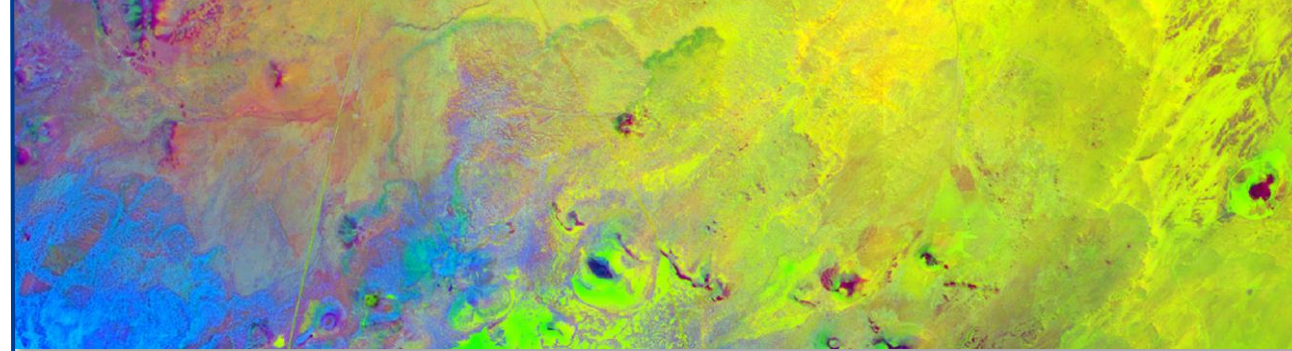
The NASA DEVELOP Model of Community Science & Engagement

Robert Cecil Byles

Ryan Hammock, Kenton Ross

About DEVELOP

- DEVELOP **builds capacity** in individuals and institutions to use remote sensing to **address environmental problems**
- **NASA Earth observations** to assist decision makers



AGRICULTURE



ENERGY



WILDFIRES



ECOLOGICAL
FORECASTING



DISASTERS



CLIMATE



HEALTH &
AIR QUALITY

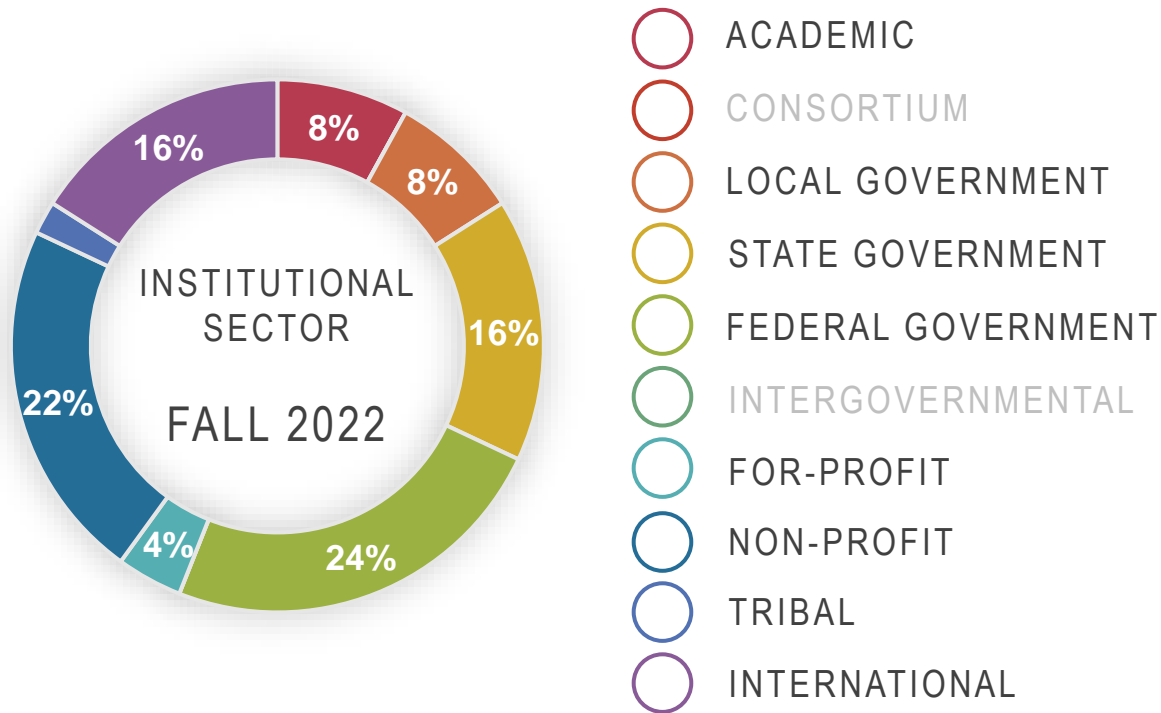


WATER
RESOURCES



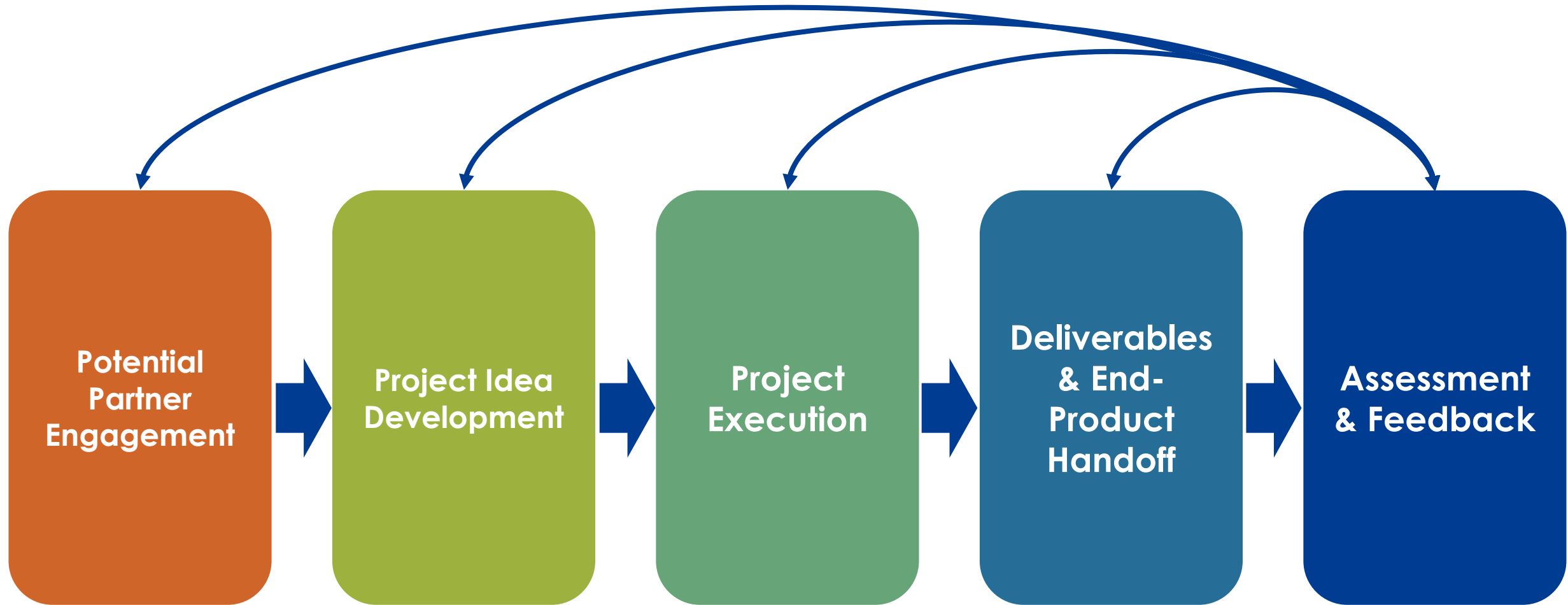
URBAN
DEVELOPMENT

Partner Engagement



- Variety of partner organizations
 - Federal agencies
 - State/local governments
 - Academia
 - Non-profit
 - For-profit
 - Consortium
 - International
- Reach out to stakeholders and create projects **collaboratively** with their needs in mind
- Each project tailored to specific end user making an **environmental decision**

DEVELOP's User-Centric Project Model



DEVELOP's Project Model

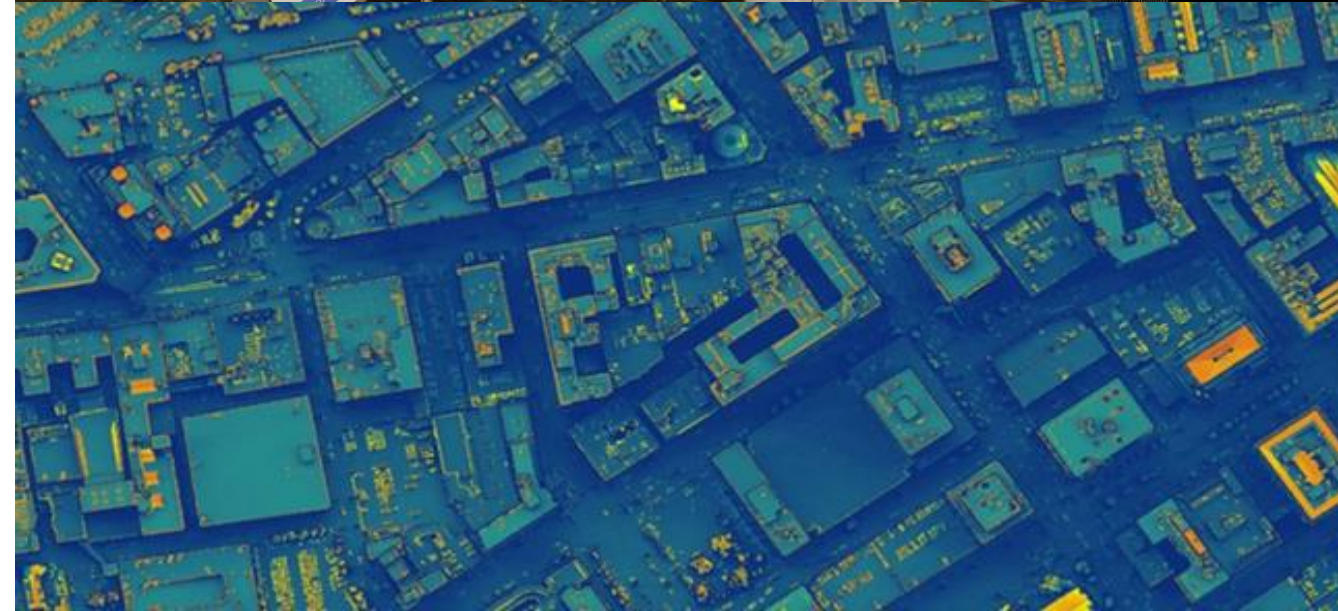
- Listening projects: **identify community organizations**
 - Health, air quality, and disaster-oriented environmental justice organizations interested in collaboration
- Feasibility projects: **incorporate Earth data into decision making**
 - End products given to partners to supplement regular practices

Key Takeaways:

- Partner input critical part of project formulation
- Building partner relationships with decision-making organizations



Credit: NASA DEVELOP



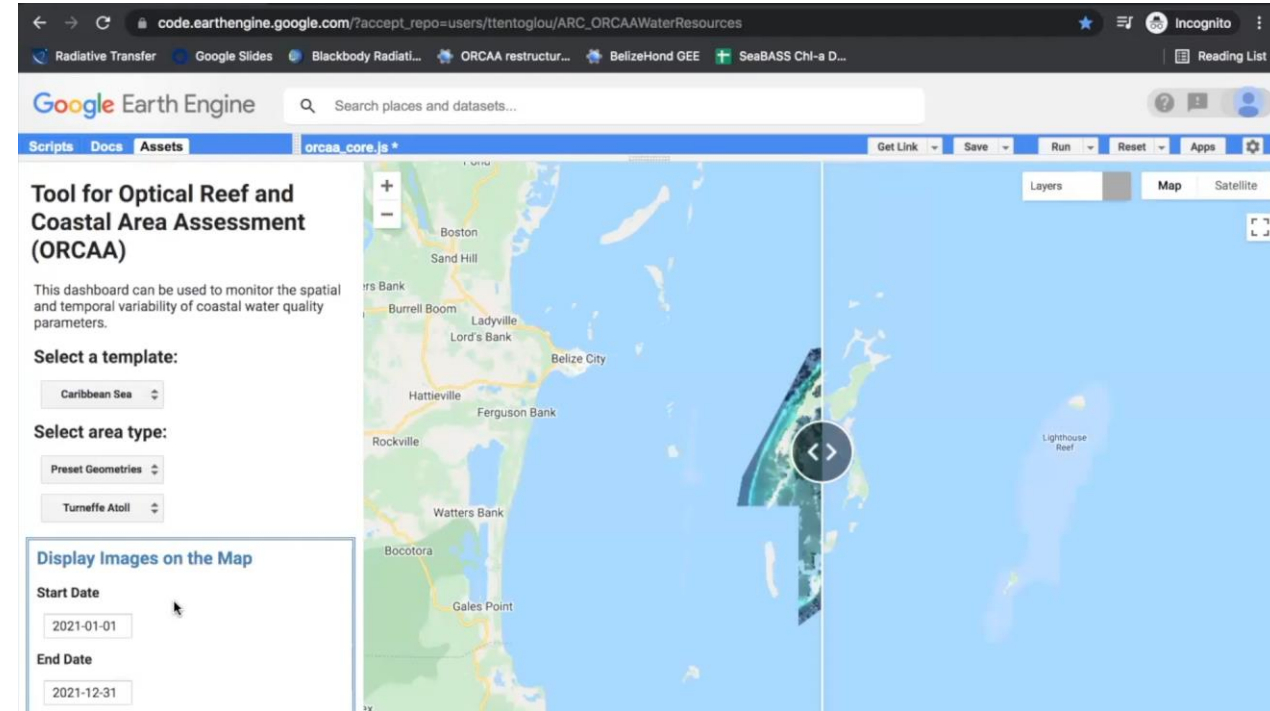
Communities Themselves

Socioeconomic factors

- Relate scientific findings back to community
- Assessments of Environmental Justice impacts

Conveying impact of science

- Science communication
- Posters, videos, tools, etc.



Lessons Learned

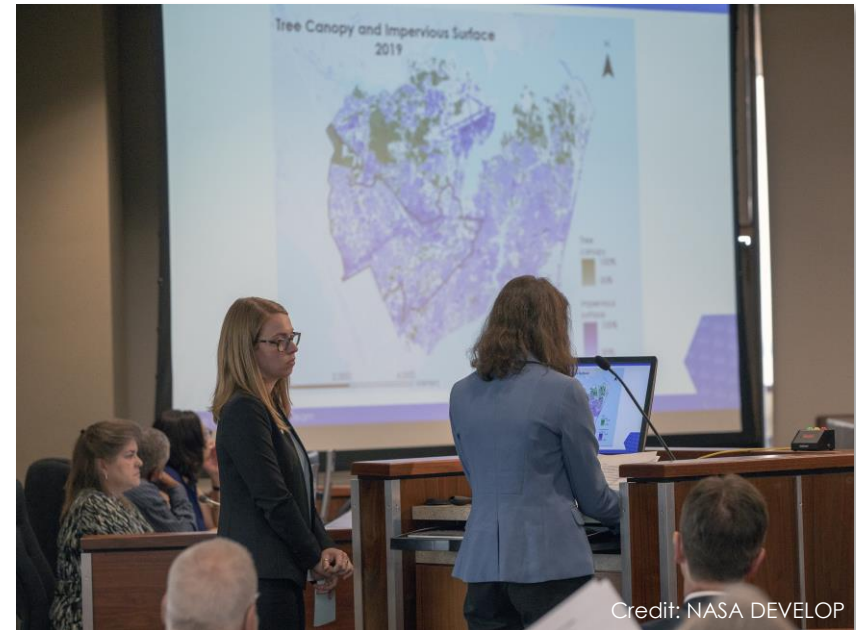
- Meaningful involvement in every step of project creation
- Hearing lived experiences of environmental issues and injustice
- Public-facing science products

Key Takeaways:

- Community voices must be amplified and incorporated into project design
- Connect with people rather than just reporting science

Evaluation

- Partner feedback forms
 - Qualitatively assess strengths of partnerships and science products



A DEVELOP team presents findings to the City Council of Hampton, VA.

+ + + + + + + + + +
+ Thank You! + +
+ + + + + + + + + +

Visit the DEVELOP website:

<https://appliedsciences.nasa.gov/nasadevelop>

Email us at:

Robert.c.byles@nasa.gov

This material is based upon work supported by NASA through contract NNL16AA05C. Any mention of a commercial product, service, or activity in this material does not constitute NASA endorsement. Any opinions, findings, and conclusions or recommendations expressed in this material are those of the author(s) and do not necessarily reflect the views of the National Aeronautics and Space Administration and partner organizations.



**EARTH SCIENCE
APPLIED SCIENCES**

