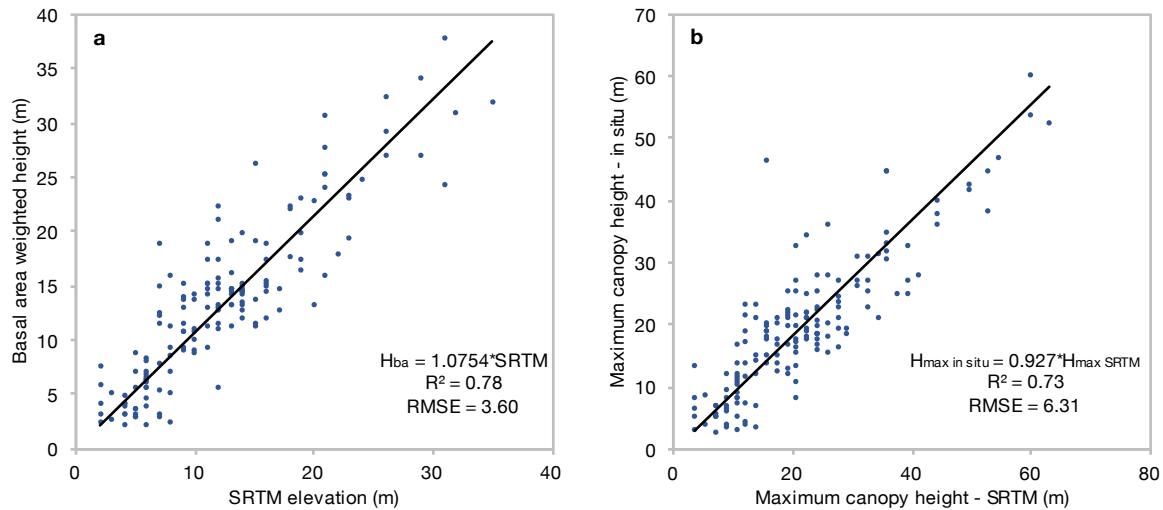


1 **Extended Data**

- 2
- 3
- 4
- 5
- 6
- 7
- 8
- 9
- 10
- 11
- 12
- 13
- 14
- 15
- 16
- 17
- 18
- 19
- 20
- 21
- 22
- 23
- 24
- 25
- 26
- 27
- 28
- 29
- 30
- 31
- 32



33

34 **Extended Data Fig. 1 | a. Correlation of in situ vs SRTM height metrics** a. Scatter plot of in  
 35 situ basal area weighted height vs the 30 m SRTM DEM elevation of the in situ plot locations and  
 36 **b.** Scatter plot of in situ  $H_{max}$  vs SRTM  $H_{max}$  values. The  $H_{max}$  plot does not include the data from  
 37 Bangladesh, as in situ  $H_{max}$  was not measured. Coefficients of determination are shown in each  
 38 plot. The significance of correlation was calculated using a t-test with a significance level of 0.05.  
 39 All correlations are significant at  $P < 0.001$ .

40

41

42

43

44

45

46

47

48

49

50

51

52

53

54

55

56

57

58

59

60

61

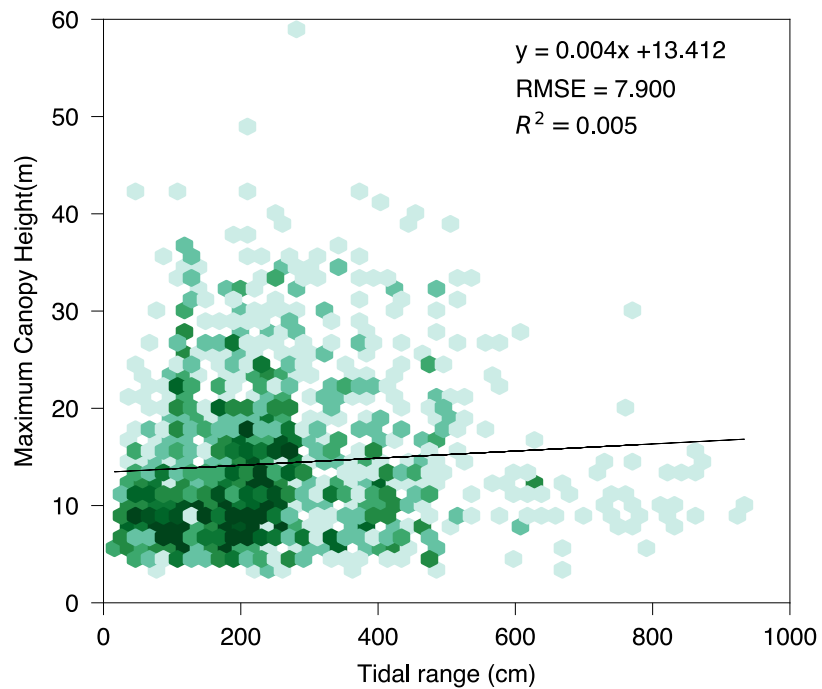
62

63

64

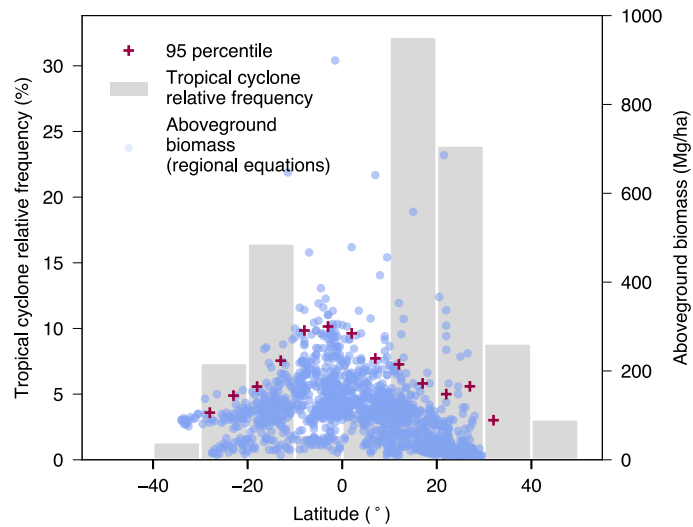
65

66  
67  
68  
69  
70  
71  
72  
73  
74  
75  
76  
77  
78  
79  
80  
81  
82  
83  
84  
85  
86



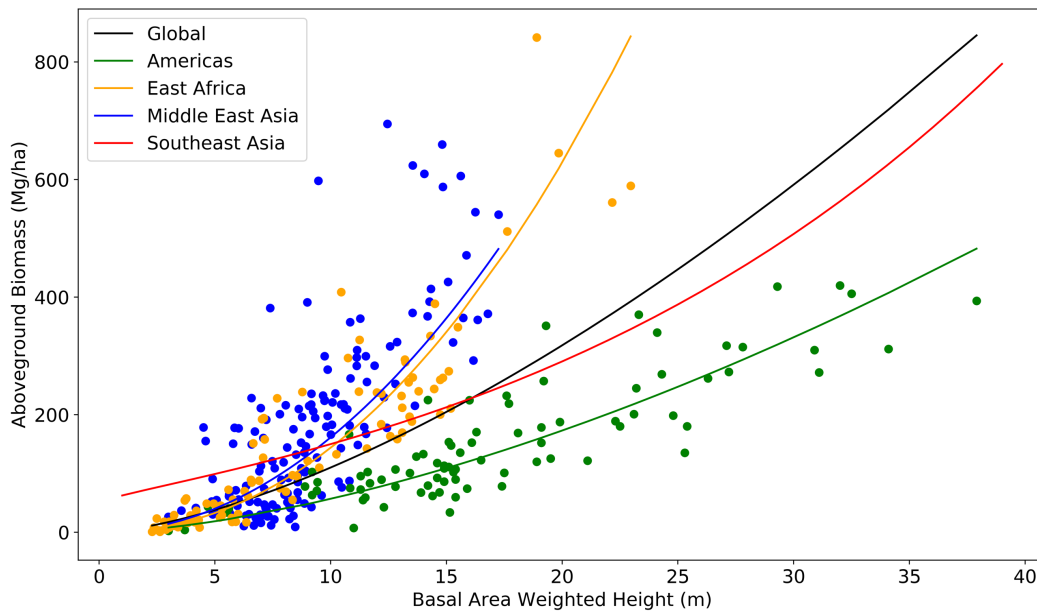
87  
88  
89  
90  
91  
92  
93  
94

**Extended Data Fig. 2 | Maximum mangrove canopy height (in m) in relation to maximum yearly tidal range (in cm).** We plotted tidal outputs from the ocean model developed by Wang and colleagues<sup>3</sup> to test whether spatial trends of mangrove canopy structure are associated with tidal range by sampling mangrove forest height every 1 degree in latitude along with mean tidal range.



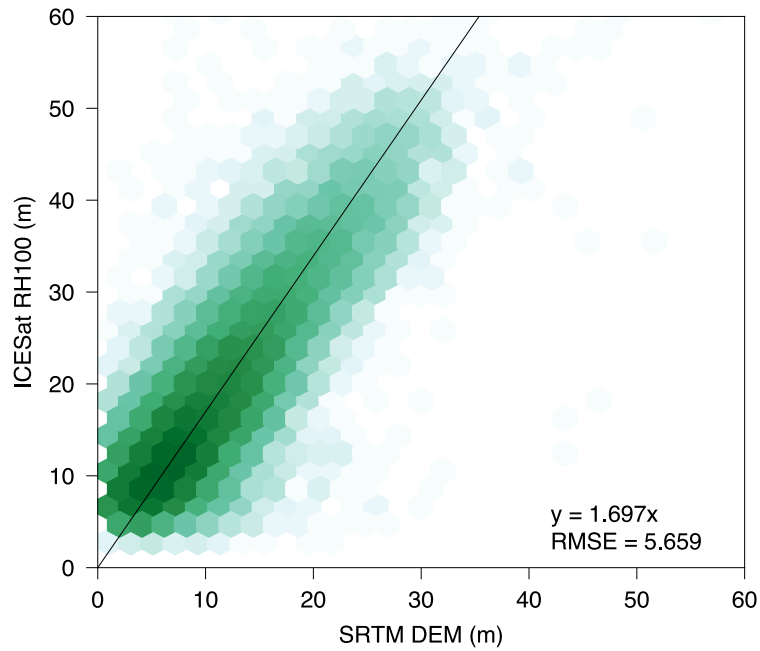
95  
 96  
 97  
 98  
 99  
 100  
 101  
 102

**Extended Data Fig. 3 | Latitudinal variation of aboveground biomass (AGB) ( $\text{Mg ha}^{-1}$ ) and tropical cyclone landfall frequency (in %).** The 95<sup>th</sup> percentile of AGB is shown as a red plus sign at every 5 degrees of latitude between ca.  $-30$  and  $30$  degrees (where mangroves occur). Tropical cyclone landfall frequency and distribution from 1842–2016, shown in grey, was generated using data from the NOAA National Centers for Environmental Information (NCEI).



103

104 **Extended Data Fig. 4 | Scatterplot and model fit of aboveground biomass (AGB) as a function**  
 105 **of basal area weighted height ( $H_{BA}$ ).**  $H_{ba}$ -AGB model based on measurements from: all 330 *in*  
 106 *situ* plots (black), 149 plots from Bangladesh (Middle East-Asia) (blue), 101 plots in East Africa  
 107 (orange), and 81 plots in the Americas (green). The red line is the published allometry relating  
 108 SRTM elevation to AGB in Southeast Asia<sup>75</sup>. Equations and  $r^2$  values are shown in Extended Data  
 109 Table 8. All correlations are significant at  $P < 0.001$ .



110

111 **Extended Data Fig. 5 | ICESat top of canopy elevation values (RH100) as a function of SRTM**  
112 **elevation values for mangrove areas across the globe.** Each ICESat footprint falling on a  
113 mangrove area was used to compute the regression between the RH100 and SRTM elevation  
114 data. Since ICESat values at RH100 are closely linked to top of canopy height values, the scaling  
115 factor is 1.697, with a RMSE of 5.659 m. The darker the hexagon, the higher the density of ICESat  
116 points corresponding to shown values.

117

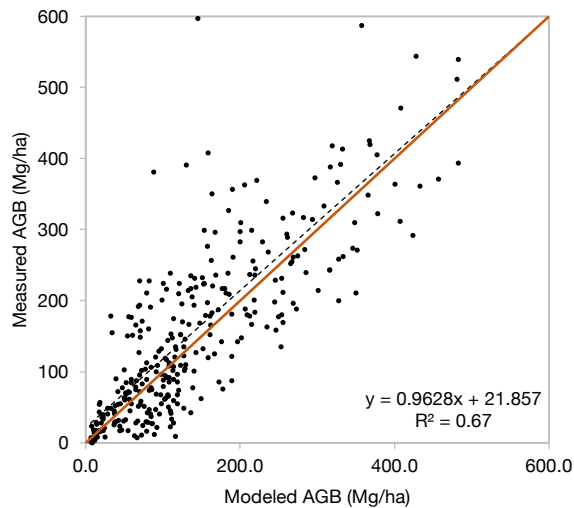
118

119

120

121

122



124

125 **Extended Data Fig. 6 | Scatterplot of the modeled aboveground biomass (AGB) as a function**  
126 **of predicted aboveground biomass using the site specific allometric models.** The red line  
127 shows the 1 to 1 relationship. The coefficient of determination ( $r^2 = 0.67$ ) and regression (dash  
128 line) equation between predicted and and measured AGB is shown on the plot.

129

130 **Extended Data Table 1 | Measurement locations and plot type.** The datasets without a  
 131 citation were collected specifically for this study and have not been previously published.  
 132

	<b>Location</b>	<b>Latitude (°)</b>	<b>Longitude (°)</b>	<b>Dataset</b>	<b>Number of plots</b>	<b>Plot type</b>
1	Tibuga, Chocó, Colombia	5.818	-77.252		4	Variable
2	San Juan River, Monagas, Venezuela	10.138	-62.608		26	Variable
3	Everglades, Florida, USA	25.444	-81.146		19	Variable
4	Caeté River, Pará, Brazil	-0.933	-46.710		4	Variable
5	Sundarbans, Khulna, Bangladesh	22.050	89.800	ref. <sup>4</sup>	149	Standard
6	Inhaca Island, Maputo Bay, Mozambique	-26.026	32.918	ref. <sup>5</sup>	51	Standard
7	Zambezi Delta, Mozambique	-18.838	36.291	ref. <sup>6</sup>	40	Standard
8	Terraba Sierpe, Puntarenas, Costa Rica	8.942	-83.614		4	Variable
9	Guayas Estuary, Guayas, Ecuador	-2.526	-79.739		5	Variable
10	Ciénaga Grande, Magdalena, Colombia	10.731	-74.420	ref. <sup>7</sup>	15	Variable
11	Celestún, Yucatán, Mexico	20.958	-90.339		1	Standard
12	Caragua, São Paulo, Brazil	-23.906	-46.198		3	Standard
13	Maputo Bay, Maputo, Mozambique	-26.184	32.679		10	Variable
14	Gabon estuary, Estuaire, Gabon	0.078	9.766		1	5 tallest trees
	<b>TOTAL</b>				<b>332</b>	

133  
 134  
 135  
 136  
 137  
 138  
 139  
 140  
 141  
 142  
 143  
 144  
 145  
 146  
 147  
 148  
 149  
 150  
 151  
 152  
 153  
 154  
 155  
 156  
 157

158 **Extended Data Table 2 | Africa's mangrove canopy height, aboveground biomass (AGB),**  
 159 **and carbon estimates based on region-specific allometric equations.**  
 160

	<b>Country</b>	<b>Max height (m)</b>	<b>Mean height (m)</b>	<b>Max AGB (Mg ha<sup>-1</sup>)</b>	<b>Mean AGB (Mg ha<sup>-1</sup>)</b>	<b>Total AGB (Mg)</b>	<b>Total carbon (Mg)</b>	<b>Total area (ha)</b>
1	Gabon	62.8	23.5	910.5	244.0	33,578,276	61,504,323	137,597
2	Equatorial Guinea	57.7	21.6	800.0	208.6	2,630,892	5,337,399	12,613
3	Cameroon	47.5	22.6	594.5	208.7	41,603,704	84,360,030	199,303
4	Angola	45.8	16.6	562.3	139.7	3,738,534	10,090,736	26,779
5	Cote d'Ivoire	44.1	16.1	530.8	130.4	249,076	708,115	1,911
6	Liberia	37.3	13.2	411.1	97.0	724,245	2,599,351	7,465
7	Nigeria	33.9	13.4	355.3	96.5	66,791,716	240,715,439	691,986
8	Comoros	32.2	19.2	658.0	246.7	26,858	48,867	109
9	Democratic Rep. of Congo	30.5	10.9	302.4	68.8	1,396,076	6,684,097	20,304
10	Ghana	28.8	9.4	277.1	59.8	689,229	3,724,126	11,523
11	Sierra Leone	28.8	11.3	277.1	74.7	11,701,745	52,204,468	156,682
12	South Africa	28.8	14.9	519.2	160.9	226,963	551,950	1,411
13	Tanzania	28.8	16.4	519.2	182.0	17,214,904	38,347,862	94,628
14	Madagascar	27.2	14.6	456.3	146.8	39,610,740	102,656,269	268,686
15	Mayotte	25.5	15.3	397.7	152.1	78,149	197,952	514
16	Europa Island	23.8	16.5	343.4	166.5	96,445	228,726	579
17	Reunion and Mauritius	23.8	8.3	343.4	65.7	2,107	10,497	32
18	Guinea	22.1	10.2	183.9	60.4	14,682,286	78,699,556	243,227
19	Seychelles	22.1	13.3	293.3	114.4	124,380	391,309	1,087
20	Togo	22.1	6.8	183.9	39.3	4,894	38,560	125
21	Djibouti	20.4	11.3	269.2	93.4	50,933	188,495	545
22	Guinea Bissau	20.4	11.8	162.7	71.6	24,783,942	114,576,720	346,015
23	Kenya	20.4	8.8	247.3	55.3	1,789,149	10,363,775	32,373
24	Mozambique	20.4	10.6	247.3	73.9	23,639,760	106,169,069	319,023
25	Gambia	18.7	8.1	142.4	42.0	2,932,013	21,735,458	69,842
26	Egypt	17.0	6.6	186.7	45.1	9,502	66,810	214
27	Eritrea	15.3	8.2	151.1	53.1	307,640	1,847,310	5,797
28	Somalia	15.3	6.3	134.0	30.7	78,608	777,134	2,559
29	Senegal	13.6	6.2	87.5	28.4	4,587,751	48,735,342	161,316
30	Mauritania	10.2	6.2	56.3	29.2	814	8,450	28
31	Benin	8.5	3.0	42.6	10.0	47,369	1,370,222	4,729
32	Soudan	8.5	3.4	46.5	11.0	3,551	93,902	323
33	Congo	0.8	1.0	1.3	1.3	445	100,260	353

161  
 162  
 163  
 164  
 165  
 166  
 167  
 168

169 **Extended Data Table 3 | Oceania’s mangrove canopy height, aboveground biomass (AGB),**  
 170 **and carbon estimates based on region-specific allometric equations.**  
 171

	Country	Max height (m)	Mean height (m)	Max AGB (Mg ha <sup>-1</sup> )	Mean AGB (Mg ha <sup>-1</sup> )	Total AGB (Mg)	Total Carbon (Mg)	Total area (ha)
1	Papua New Guinea	45.8	27.7	432.5	242.4	113,948,576	209,577,515	469,983
2	Micronesia	40.7	21.6	366.4	189.0	1,839,511	3,990,518	9,733
3	New Zealand	30.5	12.3	257.3	118.6	3,669,821	11,229,992	30,968
4	Australia	25.5	11.9	212.6	119.4	112,797,816	342,085,251	940,941
5	Hawaii	25.5	10.6	122.6	35.6	25,154	216,808	706
6	Palau*	25.5	16.4	212.6	149.4	601,312	1,543,040	4,025
7	Solomon Islands*	25.5	14.2	212.6	136.0	4,268,817	11,753,573	31,396
8	Vanuatu	25.5	12.1	212.6	120.3	163,396	494,188	1,358
9	Wallis and Futuna	25.5	12.8	212.6	124.7	1,717	5,052	14
10	Samoa*	23.8	13.0	199.0	127.2	36,766	106,538	289
11	French Polynesia	22.8	18.5	191.7	161.7	176	425	1
12	Fiji*	22.1	5.5	185.9	83.5	8,344,792	33,924,129	100,058
13	Northern Mariana Islands*	21.9	14.6	184.6	133.1	98	273	1
14	New Caledonia	18.7	8.0	161.5	92.1	2,198,955	8,233,948	23,874
15	Tuvalu	17.0	4.5	150.0	76.8	585	2,549	8
16	Tonga	13.6	7.0	128.5	89.9	69,344	264,770	771
17	Kiribati	0.8	0.8	57.4	57.4	980	5,490	17
18	Marshall islands	0.8	0.8	57.4	57.4	60	334	1

\*Maximum canopy height could not be accurately measured due to misclassification of mangrove extent.

172  
 173  
 174  
 175  
 176  
 177  
 178  
 179  
 180  
 181  
 182  
 183  
 184  
 185  
 186  
 187  
 188  
 189  
 190  
 191  
 192  
 193  
 194  
 195  
 196  
 197

198 **Extended Data Table 4 | Asia's mangrove canopy height, aboveground biomass (AGB), and**  
 199 **carbon estimates based on region-specific allometric equations.**  
 200

	<b>Country</b>	<b>Max height (m)</b>	<b>Mean height (m)</b>	<b>Max AGB (Mg ha<sup>-1</sup>)</b>	<b>Mean AGB (Mg ha<sup>-1</sup>)</b>	<b>Total AGB (Mg)</b>	<b>Total carbon (Mg)</b>	<b>Total area (ha)</b>
1	Indonesia	44.1	24.3	409.5	215.3	574,318,208	1,140,797,712	2,667,356
2	Brunei	39.0	28.4	346.2	241.1	2,624,305	4,843,908	10,885
3	Malaysia	33.9	19.9	290.6	172.9	95,561,040	220,641,786	552,741
4	Singapore	33.9	16.7	290.6	152.0	86,206	218,443	567
5	Myanmar	30.5	13.7	257.3	130.7	61,974,552	175,266,415	472,156
6	Andaman and Nicobar*	25.5	16.1	421.2	192.7	9,023,870	19,319,468	46,839
7	Bangladesh	25.5	15.4	421.2	171.7	73,916,552	171,532,878	430,607
8	Timor Leste*	25.5	21.3	212.6	180.8	6,423	14,369	36
9	Philippines	23.8	10.4	199.0	110.3	27,886,714	90,271,662	252,763
10	Japan*	22.1	13.3	185.9	127.4	100,112	289,565	785
11	Thailand	22.1	13.4	185.9	126.0	30,703,280	89,541,480	243,495
12	Cambodia	20.4	9.8	173.4	107.1	5,040,616	16,706,995	47,066
13	Taiwan	18.7	8.0	161.5	96.4	12,994	46,890	135
14	Hong Kong	17.0	5.7	150.0	80.9	46,635	194,432	576
15	China	15.3	5.6	139.0	81.8	1,266,828	5,243,015	15,518
16	Macau	15.3	8.3	139.0	98.6	477	1,689	5
17	Sri Lanka	15.3	7.6	151.1	43.4	989,212	7,118,467	22,805
18	Vietnam	15.3	6.4	139.0	87.0	17,462,792	68,489,813	200,548
19	India	13.6	7.3	119.3	41.1	13,331,113	100,688,547	324,135
20	Pakistan	8.5	5.0	46.5	17.9	961,184	15,842,946	53,700

201 \*Maximum canopy height could not be accurately measured due to misclassification of mangrove extent.

202 **Extended Data Table 5 | Americas' mangrove canopy height, aboveground biomass (AGB),**  
 203 **and carbon estimates based on region-specific allometric equations**  
 204

	Country	Max height (m)	Mean height (m)	Max AGB (Mg ha <sup>-1</sup> )	Mean AGB (Mg ha <sup>-1</sup> )	Total AGB (Mg)	Total carbon (Mg)	Total area (ha)
1	Colombia	54.3	24.0	413.3	129.5	26,648,548	75,973,344	205,179
2	Venezuela	52.6	30.7	392.8	184.0	45,505,364	100,551,457	247,252
3	Panama	50.9	27.7	372.6	155.6	23,676,218	58,979,743	152,189
4	French Guyana	49.2	23.2	352.9	129.2	10,290,431	29,453,310	79,640
5	Costa Rica	45.8	23.4	314.7	116.4	4,512,007	13,998,836	38,752
6	Guyana	42.4	24.5	278.2	127.8	2,806,631	8,105,363	21,976
7	Brazil	40.7	19.9	260.5	92.5	97,833,808	363,245,344	1,051,244
8	Ecuador	40.7	19.4	260.5	88.2	11,611,429	45,065,625	131,671
9	Guatemala	40.7	24.2	260.5	120.2	4,142,346	12,548,011	34,503
10	Suriname	40.7	17.3	260.5	80.7	6,937,571	29,000,268	86,001
11	El Salvador	39.0	18.0	243.3	75.9	2,550,341	11,216,253	33,578
12	Saint Lucia	32.2	17.7	179.1	71.6	9,892	45,725	138
13	Trinidad and Tobago	32.2	19.5	179.1	84.3	532,507	2,144,539	6,313
14	Honduras	30.5	16.9	164.2	68.0	4,519,796	21,857,392	66,502
15	US Virgin Islands	30.5	13.6	164.2	47.1	8,510	56,878	181
16	Nicaragua	28.8	14.7	149.9	55.1	4,017,509	23,354,504	72,985
17	Barbados	27.2	15.6	136.0	58.6	2,094	11,514	36
18	Dominican Republic	27.2	12.9	136.0	45.3	801,214	5,543,970	17,687
19	Martinique	27.2	14.9	136.0	54.6	58,613	343,171	1,073
20	Mexico	27.2	11.1	136.0	37.9	26,388,806	212,888,568	689,596
21	Anguilla*	25.5	8.3	122.6	29.4	56	574	2
22	Grenada	25.5	16.1	122.6	61.1	12,704	67,394	208
23	Jamaica	25.5	10.6	122.6	35.6	325,390	2,806,067	9,143
24	Saint Vincent and the Grenadines*	23.8	11.7	109.8	40.7	1,642	12,536	40
25	Belize	22.1	8.8	97.5	26.0	1,447,931	16,717,298	55,634
26	Cuba	22.1	9.9	97.5	30.2	12,797,064	128,397,896	423,316
27	Peru	22.1	12.1	97.5	40.1	162,545	1,256,800	4,055
28	Saint Kitts and Nevis	22.1	9.9	97.5	31.6	1,637	15,732	52
29	United States (continental)	22.1	10.6	97.5	33.3	7,666,705	70,281,607	230,140
30	Guadeloupe	20.4	11.0	85.7	34.1	101,593	911,443	2,979
31	Cayman Islands	18.7	11.2	74.6	34.3	259,153	2,309,178	7,544
32	Aruba	17.0	7.2	64.0	20.2	1,956	28,741	97
33	British Virgin Islands	17.0	5.8	64.0	14.2	1,090	22,465	77
34	Puerto Rico	17.0	8.2	64.0	21.8	170,687	2,333,429	7,840
35	Antigua and Barbuda	15.3	9.1	54.0	25.2	22,607	269,102	897
36	Bahamas	13.6	5.8	44.7	13.3	1,016,952	22,295,189	76,367
37	Haiti	13.6	7.5	44.7	18.0	261,748	4,280,545	14,504
38	Turks and Caicos Islands	10.2	6.9	28.2	15.4	262,418	4,992,163	17,017

205 \*Maximum canopy height could not be accurately measured due to misclassification of mangrove extent.

206 **Extended Data Table 6 | Middle East’s mangrove canopy height, aboveground biomass**  
 207 **(AGB), and carbon estimates based on region-specific allometric equations**  
 208

	<b>Country</b>	<b>Max height (m)</b>	<b>Mean height (m)</b>	<b>Max AGB (Mg ha<sup>-1</sup>)</b>	<b>Mean AGB (Mg ha<sup>-1</sup>)</b>	<b>Total AGB (Mg)</b>	<b>Total carbon (Mg)</b>	<b>Total area (ha)</b>
1	Oman	17.0	6.1	186.7	33.7	7,825	70,433	230
2	Iran	11.9	5.5	91.3	24.4	300,787	3,692,116	12,332
3	Saudi Arabia	11.9	3.9	91.3	16.2	109,564	1,941,001	6,599
4	Yemen	11.9	7.4	91.3	35.2	36,737	319,725	1,043
5	Qatar	10.2	4.7	67.0	18.0	6,892	112,853	382
6	United Arab Emirates	10.2	3.7	67.0	11.9	140,746	3,435,388	11,805
7	Bahrain	6.8	2.0	29.7	4.5	328	20,902	73

209  
 210  
 211  
 212  
 213  
 214  
 215  
 216  
 217  
 218  
 219  
 220  
 221  
 222  
 223  
 224  
 225  
 226  
 227  
 228  
 229  
 230  
 231  
 232  
 233  
 234  
 235  
 236  
 237  
 238  
 239  
 240  
 241  
 242

243 Extended Data Table 7 | Results from the multivariate ordinary least squares regression  
 244 between the SRTM  $H_{\max}$  and annual precipitation, temperature and tropical cyclone landfall  
 245 frequency at every 1-degree latitude. Sample size  $n = 61$ ; adjusted  $r^2 = 0.74$ , (VIF: variance  
 246 inflation factor)  
 247

	<b>Coefficient</b>	<b>p- value</b>	<b>standard error</b>	<b>95% Confidence Interval</b>	<b>VIF scores</b>
Annual Precipitation (mm)	0.0068	<0.001	0.002	0.004 to 0.010	1.97349
Mean Temperature (°C)	0.2424	<0.001	0.039	0.164 to 0.321	1.87399
Tropical Cyclone Landfall Frequency	-0.001	<0.05	0.000	-0.002 to 0	1.41523

248

249  
250

**Extended Data Table 8 | Aboveground biomass calibration models.** Where  $H_{ba} = 1.0754 \times H_{SRTM}$ ,  $H_{max} = 1.697 \times H_{SRTM}$  (with ICESat RH100),  $H_{CHM} = 2.7191 \times H_{SRTM}^{0.676}$ .

Allometric model	$R^2$	RMSE (Mg ha <sup>-1</sup> )	Allometry name	Region Covered by Model
$AGB = 3.254 \times H_{ba}^{1.5295}$	0.55	134.3	Global generic power	Global
$AGB = 1.066 \times H_{ba}^{2.1295}$	0.84	72.0	East Africa generic power	Somalia to South Africa
$AGB = 1.418 \times H_{ba}^{1.6038}$	0.71	54.3	Americas generic power	North, Central and South America
$AGB = 1.589 \times H_{ba}^{2.0067}$	0.46	103.4	Middle East Asia generic power	Djibouti to Bangladesh
$AGB = \exp(3.9042 + 0.0858 \times H_{CHM})$	0.55	148.0	South East Asia generic power <sup>4</sup>	Myanmar to Hawaii
$AGB = 2.572 \times H_{max}^{1.5191}$	0.70	180.0	Global Hmax power	Global
$AGB = 0.440 \times H_{max}^{2.1578}$	0.85	66	East Africa Hmax power	Somalia to South Africa
$AGB = 0.745 \times H_{max}^{1.6228}$	0.70	65	Americas Hmax power	North, Central and South America

251  
252  
253  
254  
255  
256  
257  
258  
259  
260  
261  
262  
263  
264  
265  
266  
267  
268  
269  
270  
271  
272  
273  
274  
275  
276  
277  
278  
279  
280

281 **Extended Data Table 9 | Comparison of this study with published global estimates of**  
 282 **mangrove aboveground biomass (AGB), belowground biomass (BGB) and carbon (C).**  
 283  
 284

Study	AGB (Pg)	BGB (Pg)	Total biomass (Pg)	Soil C (Pg)	Total C (Pg)	Soil C depth (m)	Mangrove cover map used	Year of estimate
Hutchison et al. (2014) <sup>8</sup>	2.83	1.11	-	-	-	-	World Atlas of Mangroves (Spalding et al. 2010) <sup>9</sup>	1999-2003
Twilley et al. (1992) <sup>10</sup>	2.34	1.69	4.03	-	-	-	World Resources (1986) (see ref. <sup>10</sup> )	1986
Sanders et al. (2016) <sup>11</sup>	1.6	-	-	9.6	11.2	2	Giri et al. (2011) <sup>12</sup>	2000
Sanderman et al. (2018) <sup>13</sup>	-	-	-	6.4, resp. 12.6	-	1, resp. 2	Giri et al. (2011) <sup>12</sup>	2000
Hamilton & Friess (2018) <sup>14</sup>	0.82	0.41	-	2.96	4.19	1	Hamilton and Casey (2016) <sup>15</sup>	2012
Atwood et al. (2017) <sup>16</sup>	1.8	-	-	2.6	4.4	1	Hamilton and Casey (2016) <sup>15</sup>	2012
Jardine & Siikamäki (2014) <sup>17</sup>	-	-	-	5.00 ± 0.94	-	1	Giri et al. (2011) <sup>12</sup>	2000
Siikamäki et al. (2012) <sup>18</sup>	-	-	2.1	4.4	6.5	-	Giri et al. (2011) <sup>12</sup>	2000
Tang et al. (2018) <sup>19</sup>	1.908	0.725	2.633	-	1.32	-	World Atlas of Mangroves (Spalding et al. 2010) <sup>9</sup>	2000
Donato et al. (2011) <sup>20</sup>	data from various sources	data from various sources	data from various sources	data from various sources	4 to 20	-	FAO (2007) <sup>21</sup> & Giri et al. (2011) <sup>12</sup>	
Rovai et al. (2018) <sup>22</sup>	-	-	-	2.26	-	-	Hamilton and Casey (2016) <sup>15</sup>	
<b>This study</b>	<b>1.75 ± 0.77</b>	<b>0.84 ± 0.377</b>	<b>1.72</b>	<b>3.6</b>	<b>5.03</b>	<b>1</b>	<b>Giri et al. (2011)<sup>12</sup></b>	<b>2000</b>

285  
 286  
 287  
 288  
 289  
 290  
 291  
 292

293 **References**

294

- 295 1. Fick, S. E. & Hijmans, R. J. WorldClim 2: new 1-km spatial resolution climate surfaces for  
296 global land areas. *Int. J. Climatol.* **37**, 4302–4315 (2017).
- 297 2. Kummerow, C., Barnes, W., Kozu, T., Shiue, J. & Simpson, J. The Tropical Rainfall  
298 Measuring Mission (TRMM) sensor package. *J. Atmos. Ocean. Technol.* **15**, 809–817 (1998).
- 299 3. Wang, X., Chao, Y., Shum, C. K., Yi, Y. & Fok, H. S. Comparison of two methods to assess  
300 ocean tide models. *J. Atmos. Ocean. Technol.* **29**, 1159–1167 (2012).
- 301 4. Aslan, A., Rahman, A. F., Warren, M. W. & Robeson, S. M. Mapping spatial distribution and  
302 biomass of coastal wetland vegetation in Indonesian Papua by combining active and passive  
303 remotely sensed data. *Remote Sens. Environ.* **183**, 65–81 (2016).
- 304 5. Fatoyinbo, T. E., Simard, M., Washington-Allen, R. A. & Shugart, H. H. Landscape-scale  
305 extent, height, biomass, and carbon estimation of Mozambique’s mangrove, forests with  
306 Landsat ETM+ and Shuttle Radar Topography Mission elevation data. *J. Geophys. Res.*  
307 *Biogeosciences* **113**, 1–13 (2008).
- 308 6. Trettin, C. C., Stringer, C. E. & Zarnoch, S. J. Composition, biomass and structure of  
309 mangroves within the Zambezi River Delta. *Wetl. Ecol. Manag.* **24**, 173–186 (2015).
- 310 7. Simard, M., Rivera-monroy, V. H., Mancera-pineda, J. E., Castañeda-Moya, E. & Twilley,  
311 R. R. A systematic method for 3D mapping of mangrove forests based on Shuttle Radar  
312 Topography Mission elevation data, ICESat / GLAS waveforms and field data: application to  
313 Ciénaga Grande de Santa Marta, Colombia. *Remote Sens. Environ.* **112**, 2131–2144 (2008).
- 314 8. Hutchison, J., Manica, A., Swetnam, R., Balmford, A. & Spalding, M. Predicting global  
315 patterns in mangrove forest biomass. *Conserv. Lett.* **7**, 233–240 (2014).
- 316 9. Spalding, M., Kainuma, M. & Collins, L. *World Atlas of Mangroves*. Earthscan, London  
317 (2010).
- 318 10. Twilley, R. R., Chen, R.H. & Hargis, T. Carbon sinks in mangroves and their implications to  
319 carbon budget of tropical coastal ecosystems. *Water Air Soil Poll.* **64**, 265–288 (1992).
- 320 11. Sanders, C. J., et al., Are global mangrove carbon stocks driven by rainfall? *J. Geophys. Res.*  
321 *Biogeosci.* **121**, doi:10.1002/2016JG003510 (2016).
- 322 12. Giri, C. et al. Status and distribution of mangrove forests of the world using earth observation  
323 satellite data. *Glob. Ecol. Biogeogr.* **20**, 154–159 (2011).
- 324 13. Sanderman, J. et al. A global map of mangrove forest soil carbon at 30 m spatial resolution.  
325 *Environ. Res. Lett.* **13**, 055002 (2018).
- 326 14. Hamilton, S. E. & Friess, D. A. Global carbon stocks and potential emissions due to  
327 mangrove deforestation from 2000 to 2012. *Nat. Clim. Chang.* **8**, 240–244 (2018).
- 328 15. Hamilton, S. E. & Casey, D. Creation of a high spatio-temporal resolution global database of  
329 continuous mangrove forest cover for the 21<sup>st</sup> century (CGMFC-21). *Glob. Ecol. Biogeogr.*  
330 **25**, 729–738 (2016).
- 331 16. Atwood, T. B. et al. Global patterns in mangrove soil carbon stocks and losses. *Nat. Clim.*  
332 *Chang.* **7**, 523–528 (2017).
- 333 17. Jardine, S. L. & Siikamäki, J. V. A global predictive model of carbon in mangrove soils.

334 *Environ. Res. Lett.* **9**, 104013 (2014).

335 18. Siikamaäki, J., Sanchirico, J. N. & Jardine, S. L. Global economic potential for reducing  
336 carbon dioxide emissions from mangrove loss. *Proc. Natl. Acad. Sci.* **109**, 14287–14288  
337 (2012).

338 19. Tang, W., Zheng, M., Zhao, X., Shi, J., Yang, J. & Trettin, C. C. Big geospatial data  
339 analytics for global mangrove biomass and carbon estimation. *Sustainability* **10**,  
340 doi:10.3390/su10020472 (2018).

341 20. Donato, D. C. et al. Mangroves among the most carbon-rich forests in the tropics. *Nat.*  
342 *Geosci.* **4**, 293–297 (2011).

343 21. Food and Agriculture Organization of the United Nations (FAO). *The World's Mangroves*  
344 *1980–2005* (FAO Forestry Paper 153. FAO, 2007).

345 22. Rovai, A. S. et al. Global controls on carbon storage in mangrove soils. *Nat. Clim. Change* **8**,  
346 534–538 (2018).

347

348

349