

**CONTRACTOR SUPPORT BUILDING #7**

**PER- AND POLYFLUOROALKYL SUBSTANCES (PFAS) SITE  
ASSESSMENT WORK PLAN**

**KENNEDY SPACE CENTER, FLORIDA**

**Prepared for:**



**National Aeronautics and Space Administration  
Kennedy Space Center, Florida**

**January 2023  
Revision 0**

**Prepared by:**

**HydroGeoLogic, Inc.  
2405 Courtenay Parkway, Suite 203  
Merritt Island, FL 32953  
(407) 737-1881**

## TABLE OF CONTENTS

	<b>Page</b>
1.0 KENNEDY SPACE CENTER, FLORIDA INTRODUCTION.....	1
1.1 SITE DESCRIPTION .....	1
1.2 SITE HISTORY .....	1
1.3 PREVIOUS INVESTIGATIONS.....	1
2.0 SITE ASSESSMENT ACTIVITIES.....	3
2.1 SITE ASSESSMENT APPROACH .....	3
2.2 INITIAL SITE ASSESSMENT ACTIVITIES.....	4
2.2.1 Lithologic Boring.....	4
2.2.2 Staff Gauge Installations.....	4
2.2.3 Monitoring Well Sampling .....	5
2.2.4 DPT Groundwater Sampling.....	5
2.2.5 Surface Water Sampling .....	5
2.3 SUBSEQUENT SITE ASSESSMENT ACTIVITIES.....	5
3.0 REFERENCES .....	6

## LIST OF TABLES

Table 1	Sample Location Rationale
---------	---------------------------

## LIST OF FIGURES

Figure 1	Contractor Support Building #7 Site Location Map
Figure 2	Contractor Support Building #7 Surface Water and Groundwater Analytical Results
Figure 3	SWMU #114 Groundwater Elevation Map Shallow Zone
Figure 4	SWMU #114 Groundwater Elevation Map Intermediate Zone
Figure 5	Regional Proposed DPT Locations and Monitoring Wells

## LIST OF ACRONYMS AND ABBREVIATIONS

---

mg/kg	milligrams per kilogram
ng/L	nanograms per liter
AOPC	Area of Potential Concern
bgs	below ground surface
DPT	Direct Push Technology
EPA	Environmental Protection Agency
FDEP	Florida Department of Environmental Protection
HGL	HydroGeoLogic, Inc.
KSC	John F. Kennedy Space Center
NASA No.	National Aeronautics and Space Administration number
PFAS	Per- and Polyfluoroalkyl Substances
PFBS	Perfluorobutanesulfonic acid
PFHxS	Perfluorohexanesulfonic acid
PFNA	Perfluorononanoic acid
PFOA	Perfluorooctanoic acid
PFOS	Perfluorooctanesulfonic acid
PRL	Potential Release Location
RCRA	Resource Conservation and Recovery Act
RSL	Regional Screening Level
SLF	Shuttle Landing Facility
SW SL	Surface Water Screening Level
SWMU	Solid Waste Management Unit

# **CONTRACTOR SUPPORT BUILDING #7 PER- AND POLYFLUOROALKYL SUBSTANCES (PFAS) SITE ASSESSMENT WORK PLAN**

## **1.0 KENNEDY SPACE CENTER, FLORIDA INTRODUCTION**

Contractor Support Building #7 (J6-2327) is located at John F. Kennedy Space Center (KSC), Florida (“the Site;” **Figure 1**) and is designated Potential Release Location (PRL) Number (No.) 237, Area of Potential Concern (AOPC) No. 2 under KSC’s Resource Conservation and Recovery Act (RCRA) Corrective Action Program. In accordance with the RCRA Corrective Action Program, HydroGeoLogic, Inc. (HGL) prepared this Per-and Polyfluoroalkyl Substances (PFAS) Site Assessment Work Plan for the National Aeronautics and Space Administration (NASA) under Contract No. 80KSC019D0012, Delivery Order 80KSC021F0168, Technical Directive No. 1. This document presents and summarizes the approach to investigating soil, groundwater, and surface water with PFAS impacts that were previously identified at the Site.

### **1.1 SITE DESCRIPTION**

Contractor Support Building #7 (J6-2327) is located east-northeast of State Road 3 (Kennedy Parkway North) and was formerly investigated under PRL 78, Contractor Support Building #7, which was granted No Further Action status in 2014. Contractor Support Building #7 is located within and on the east side of Solid Waste Management Unit (SWMU) No. 114 and to the southeast of SWMU No. 119.

### **1.2 SITE HISTORY**

Information regarding the current and historical use of this property is summarized from the Contractor Support Building #7 (J6-2377) Kennedy Space Center, Florida Confirmatory Sampling Report (PRL #78) (Revision 2) (J-BOSC Environmental Health Services [J-BOSC] 2000). In 1963, the Contractor Support Building was constructed and used mostly for storage; a photography lab was also present. The septic tank and dry well associated with this building may have received discharges that contained solvents and/or metal residuals. The septic tank was removed in 1999. This building was historically identified as PRL 078. Additionally, this site was identified by Mr. Moore and Chief Anderson as a former storage area for aqueous film-forming foam materials. Therefore, this area was identified as an AOPC.

Phase I activities indicated groundwater concentrations from samples collected at AOPC #2 exceeded the Florida Department of Environmental Protection provisional Groundwater Cleanup Target Levels for PFOS and PFOA.

### **1.3 PREVIOUS INVESTIGATIONS**

As part of the KSC Center-Wide PFAS Confirmatory Sampling, four groundwater samples were collected from one location (PFAS-DPT0019) in March 2019. In August and September 2021, a total of eight additional groundwater samples from two direct push technology (DPT) locations (PFAS-DPT0221 and PFAS-DPT0222) and four soil samples from two soil boring locations

(PFAS-SB0101 and PFAS-SB102) were collected from this site. Additionally, in October 2021, two surface water samples (PFAS-SW0199 and PFAS-SW0200) were collected from this site. One surface water sample (PFAS-SW0184) was collected from a stormwater pond located south of the Site and three surface water samples were collected in the vicinity of the site (PFAS-SW0065, PFAS-SW0199 and PFAS-SW0200).

As part of the initial SWMU #114 PFAS Site Assessment Activities, four groundwater samples were collected from one location (S114-DPT1025) in June 2022 and one intermediate monitoring well was installed and sampled in August 2022 (Figure 2).

Surface water analytical results for PFAS-SW0065, PFAS-SW0184, PFAS-SW0199, and PFAS-SW0200 indicate perfluorooctanoic acid (PFOA) concentrations are below the FDEP surface water screening level (SW SL). Perfluorooctanesulfonic acid (PFOS) concentrations are above the SW SL at concentrations of 79.1 ng/L, 80.3 ng/L, 30.1 ng/L, and 774 ng/L, respectively.

Groundwater analytical results indicate that concentrations of PFAS compounds exceeded the Environmental Protection Agency (EPA) Regional Screening Level (RSL) at one or more depths at four of the five sample locations. Maximum PFOA, perfluorobutanesulfonic acid (PFBS), perfluorohexanesulfonic acid (PFHxs) and PFOS concentrations were detected at the 25' depth interval of PFAS-DPT0019 at 160 ng/L, 1,100 ng/L, 3,000 ng/L and 990 ng/L, respectively (**Figure 2**). Perfluorononanoic acid (PFNA) was not detected in any of the samples.

Analytical results for soil samples PFAS-SB0101 and PFAS-SB0102 indicate that PFOA and PFOS concentrations are below the pSCTLs in all depth intervals. Maximum PFOA concentrations are located within PFAS-SB0102 at 0 to 0.5 foot below ground surface (bgs) at a concentration of 0.00029 milligrams per kilogram (mg/kg). Maximum PFOS concentrations are located within PFAS-SB0101 at 0 to 0.5 foot bgs at a concentration of 0.00046 mg/kg.

Two monitoring wells have been installed at the Site. Based on groundwater elevation data from adjacent SWMU 114, groundwater flow is towards the southeast (**Figures 3 and 4**).

No lithologic borings have been advanced at the Site. Lithologic borings advanced at SWMU 114 located to the southwest of the Site, indicate that the lithology consists primarily of sand and shell to a depth of 43 to 48 feet bgs. This layer is underlain by a semi-confining or retarding layer of silt, shell and/or clay.

KSCRT consensus was reached to conduct SA investigations at AOPC #2 during the January 2022 KSCRT meeting (KSCRT Decision 2201-D04).

## 2.0 SITE ASSESSMENT ACTIVITIES

The proposed site assessment approach and activities are described in the following sections.

### 2.1 SITE ASSESSMENT APPROACH

Site assessment activities will be performed using a phased approach. Initial site assessment activities will consist of the following activities:

- Advancement of a lithologic boring to 60 feet bgs for lithologic description;
- Installation of one staff gauge to monitor surface water levels at the Site;
- Collection of DPT groundwater samples at five depths (3'-7', 13'-17', 23'-27', 33'-37', and 43'-47') from eight DPT groundwater sample locations to continue the delineation of PFAS compounds; and
- Collection of four surface water samples.

Based on the results of the activities listed above, additional soil, groundwater, and/or surface water sample locations may be proposed. Additional proposed groundwater and surface water samples may be specific to the Site or as part of the greater Shuttle Landing Facility (SLF) study area investigation.

Additionally, on a quarterly basis for 1 year, water level measurements will be collected from the two recently installed monitoring wells and the staff gauge, one monitoring well will be sampled, and one surface water sample will be collected.

All collected samples will be analyzed by EPA Method 537.1.1 Mod for the 25 PFAS compounds listed below.

Analyte	Acronym	CAS No.
Perfluorobutanoic acid	PFBA	375-22-4
Perfluoropentanoic acid	PFPeA	2706-90-3
Perfluorohexanoic acid	PFHxA	307-24-4
Perfluoroheptanoic acid	PFHpA	375-85-9
Perfluorooctanoic acid	PFOA	335-67-1
Perfluorononanoic acid	PFNA	375-95-1
Perfluorodecanesulfonic acid	PFDA	335-76-2
Perfluoroundecanoic acid	PFUnA	2058-94-8
Perfluorodecanoic acid	PFDoA	307-55-1
Perfluorotridecanoic acid	PFTriA	72629-94-8
Perfluorotetradecanoic acid	PFTeA	376-06-7
Perfluorobutanesulfonic acid	PFBS	375-73-5
Perfluoropentanesulfonic acid	PFPeS	2706-91-4
Perfluorohexanesulfonic acid	PFHxS	355-46-4
Perfluoroheptanesulfonic acid	PFHpS	375-92-8
Perfluorooctanesulfonic acid	PFOS	1763-23-1
Perfluorononanesulfonic acid	PFNS	68259-12-1
Perfluorododecanoic acid	PFDS	335-77-3
Perfluorooctanesulfonamide	PFOSA	754-91-6

Analyte	Acronym	CAS No.
N-methylperfluorooctanesulfonamidoacetic acid	NMeFOSAA	2355-31-9
N-ethylperfluorooctanesulfonamidoacetic acid	NEtFOSAA	2991-50-6
4:2 Fluorotelomer sulfonate	4:2 FTS	757124-72-4
6:2 Fluorotelomer sulfonate	6:2 FTS	27619-97-2
8:2 Fluorotelomer sulfonate	8:2 FTS	39108-34-4
Hexafluoropropylene oxide dimer acid	GenX	13252-13-6

Additionally, select samples may be analyzed for branched and linear PFOS, PFOA, PFNA, and/or PFHxS analysis.

Laboratory analytical results for soil and groundwater samples will be screened against the EPA RSLs. Laboratory analytical results for surface water samples will be screened against the FDEP SW SLs. The screening levels for specific PFAS compounds are summarized below.

Compound	EPA Soil RSL <sup>(1)</sup> (mg/kg)	EPA Groundwater RSL <sup>(2)</sup> (ng/L)	FDEP SW SL (ng/L)
PFOA	0.19	6	500
PFNA	0.19	6	-
PFBS	19	600	-
PFHxS	1.3	40	-
PFOS	0.13	4	10
GenX	0.23	6	-

(1): EPA, 2022. Regional Screening Level Resident Soil Table (TR=1E-06, HQ=1.0)

(2): EPA, 2022. Regional Screening Level Resident Tapwater Table (TR=1E-06, HQ=0.1)

## 2.2 INITIAL SITE ASSESSMENT ACTIVITIES

The proposed initial site assessment activities are summarized in the following sections. The rationale for the proposed sample locations is given in **Table 1**.

### 2.2.1 Lithologic Boring

One soil boring will be advanced to a depth of 60 feet using a rotasonic drill rig for lithologic description. Photographs will be taken of the soil cores. The proposed boring (PLB-1) is located on the eastern side of the Site in an area where high PFAS concentrations are not expected (**Figure 2**). No soil samples will be collected from the boring for laboratory analysis. It is anticipated that deep soil samples will be collected during a future phase during installation of a deep monitoring well. The borehole will be pressure grouted from total depth to land surface immediately following completion of the boring.

### 2.2.2 Staff Gauge Installations

One staff gauge will be installed in the canal on the southern side of the Site. The proposed location of the staff gauge (PSG-1) is shown on **Figure 2**. The water level elevation at the staff gauge will be measured on a quarterly basis for 1 year to assess temporal variations in water level elevations.

### **2.2.3 Monitoring Well Sampling**

Monitoring well S114-MW004S will be sampled on a quarterly basis for 1 year to assess temporal variations in PFAS concentrations. Monitoring well S114-MW004S has not yet been sampled.

### **2.2.4 DPT Groundwater Sampling**

The objective of the initial groundwater investigation is to gain an understanding of the magnitude of PFAS impacts in the vicinity of the Site. Groundwater sampling at eight DPT groundwater sample locations are proposed. At each sample location, groundwater samples will be collected at intervals of 3 to 7 feet (or water table), 13 to 17 feet, 23 to 27 feet, 33 to 37 feet, and 43 to 47 feet bgs. The boreholes will be pressure grouted from total depth to land surface immediately following sample collection. No samples from these proposed locations will be collected below the 43 to 47 feet bgs interval. Prior to groundwater sampling, a lithologic boring will be advanced to a depth of 60 feet bgs. Groundwater sample intervals may be revised based on the lithologies encountered during the advancement of the lithologic soil boring. The proposed DPT groundwater sample locations are shown on **Figure 2**.

### **2.2.5 Surface Water Sampling**

Surface water samples will be collected from four locations at the immediate surface. Additionally, surface water sample location PSW-3 will be sampled on a quarterly basis for 1 year to assess temporal variations in PFAS concentrations. The proposed surface water sample locations are shown on **Figure 2**.

## **2.3 SUBSEQUENT SITE ASSESSMENT ACTIVITIES**

After data from the initial round of site assessment activities has been reviewed by HGL and NASA KSC, additional soil and DPT groundwater sample locations may be proposed to complete horizontal delineation, complete vertical delineation, reduce the footprint of the interpreted area of PFAS above RSLs and/or investigate groundwater/surface water interactions. Additional surface water sampling locations will be proposed as part of a SLF area-wide surface water investigation to be performed after the initial site assessment activities have been completed at the Site and other sites in the SLF study area. All currently proposed DPT groundwater sample and monitoring well locations for the SLF study area are shown on **Figure 5**.



### 3.0 REFERENCES

AECOM, 2022. *Center-Wide Phase II and III Solid Waste Management Unit Assessment and Confirmatory Sampling Report for Per- and Polyfluorinated Alkyl Substances, Potential Release Location (PRL) No. 237*, Kennedy Space Center, Florida. 2022.

J-BOSC. 2000. *Contractor Support Building #7 (CSB #7) (J6-2377) Kennedy Space Center, Florida Confirmatory Sampling Report (PRL #78) (Revision 2)*. June 2000.

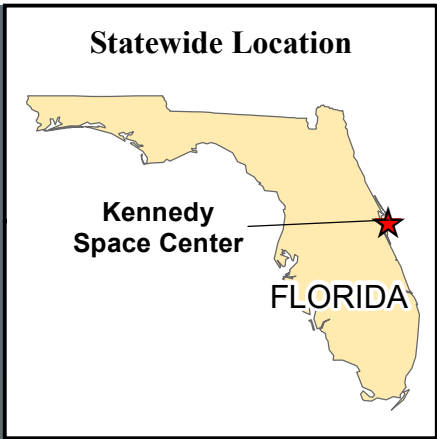
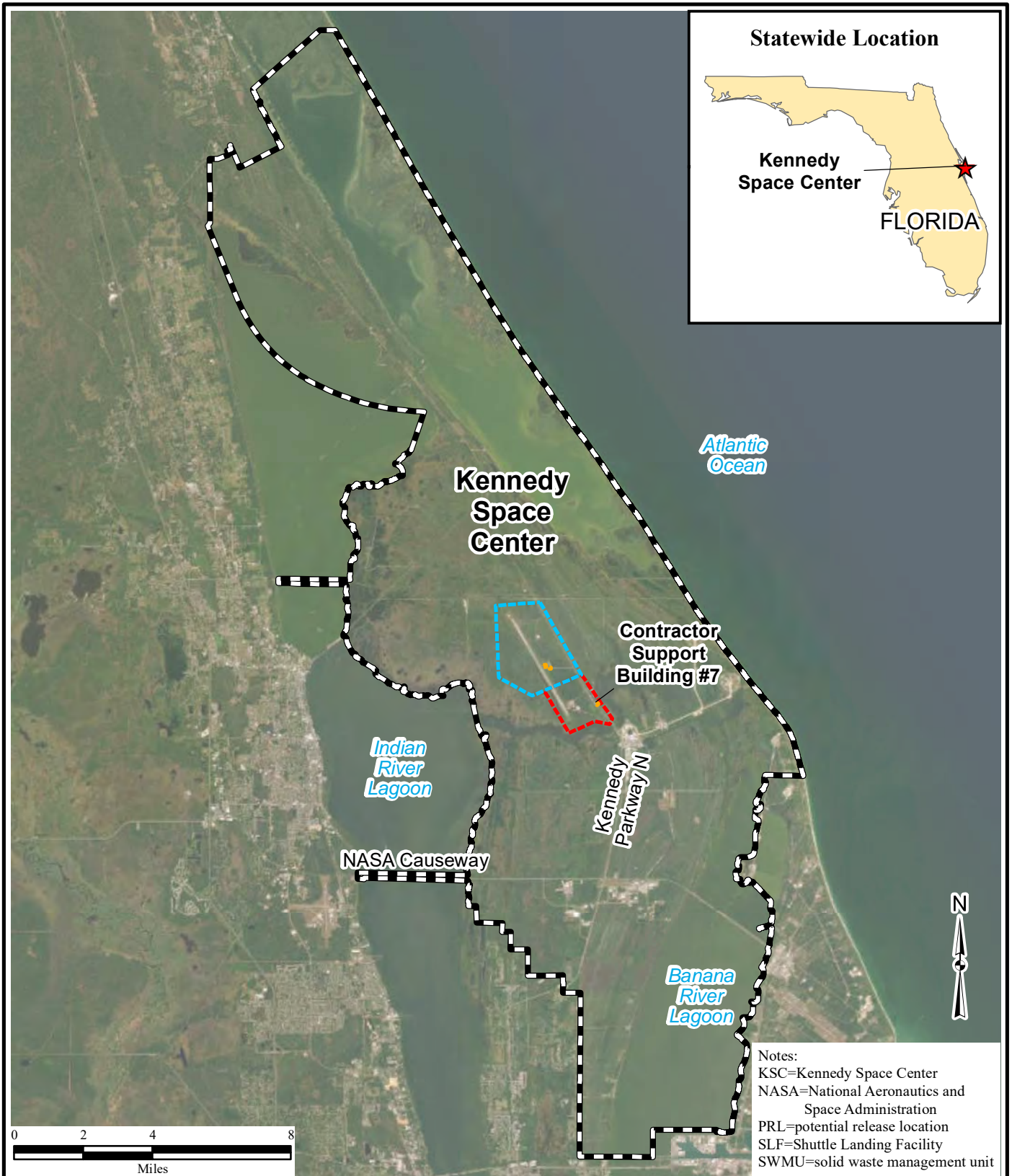
National Aeronautics and Space Administration (NASA). 2019. *Phase I Solid Waste Management Unit Assessment and Confirmatory Sampling Report Center-Wide Per- and Polyfluoroalkyl Substances (PFAS) Potential Release Location 237*, John F. Kennedy Space Center, Florida (Revision 0). Prepared by Geosyntec Consultants. September 2019.

## **TABLE**

**Table 1**  
**Contractor Support Building #7 Work Plan**  
**Sample Location Rationale**

Proposed Sample Location	Rationale
PDPT-1	Assess groundwater quality on northern edge of site
PDPT-2	Assess groundwater quality on westrn edge of site
PDPT-3	Assess groundwater quality northeast of PFAS-DPT0019 Hotspot
PDPT-4	Assess groundwater quality northwest of PFAS-DPT0019 Hotspot
PDPT-5	Assess groundwater quality southwest of PFAS-DPT0019 Hotspot
PDPT-6	Assess groundwater quality southeast of PFAS-DPT0019 Hotspot
PDPT-7	Assess groundwater quality downgradient of site
PDPT-8	Assess groundwater quality downgradient of site
PSW-1	Assess groundwater quality upstream of previous surface water exceedance
PSW-2	Assess groundwater quality upstream of previous surface water exceedance
PSW-3	Assess groundwater quality downstream of previous surface water exceedance
PSW-4	Assess groundwater quality downstream of previous surface water exceedance
PSG-1	Staff Gauge adjacent to MW0004S

## **FIGURES**



Notes:  
 KSC=Kennedy Space Center  
 NASA=National Aeronautics and Space Administration  
 PRL=potential release location  
 SLF=Shuttle Landing Facility  
 SWMU=solid waste management unit

\\srv-gst-01\hglgis\KSC\_NS1002\_Misc\_Figures  
 \PFOS\_Sites\Work\_Plan\CSBldg7  
 \01\CSBldg7\_Site\_Location.mxd  
 11/16/2022 TB  
 Source: HGL, 3E Consultants  
 ArcGIS Online Imagery

Legend	
	Site Location
	SWMU 114 Boundary
	SWMU 119 Boundary
	PRL 237 Boundary
	Kennedy Space Center

**Figure 1**  
**Contractor Support Building #7**  
**Site Location Map**

**Figure 2**  
**Contractor Support Building #7**  
**Surface Water and Groundwater**  
**Analytical Results**

**Legend**

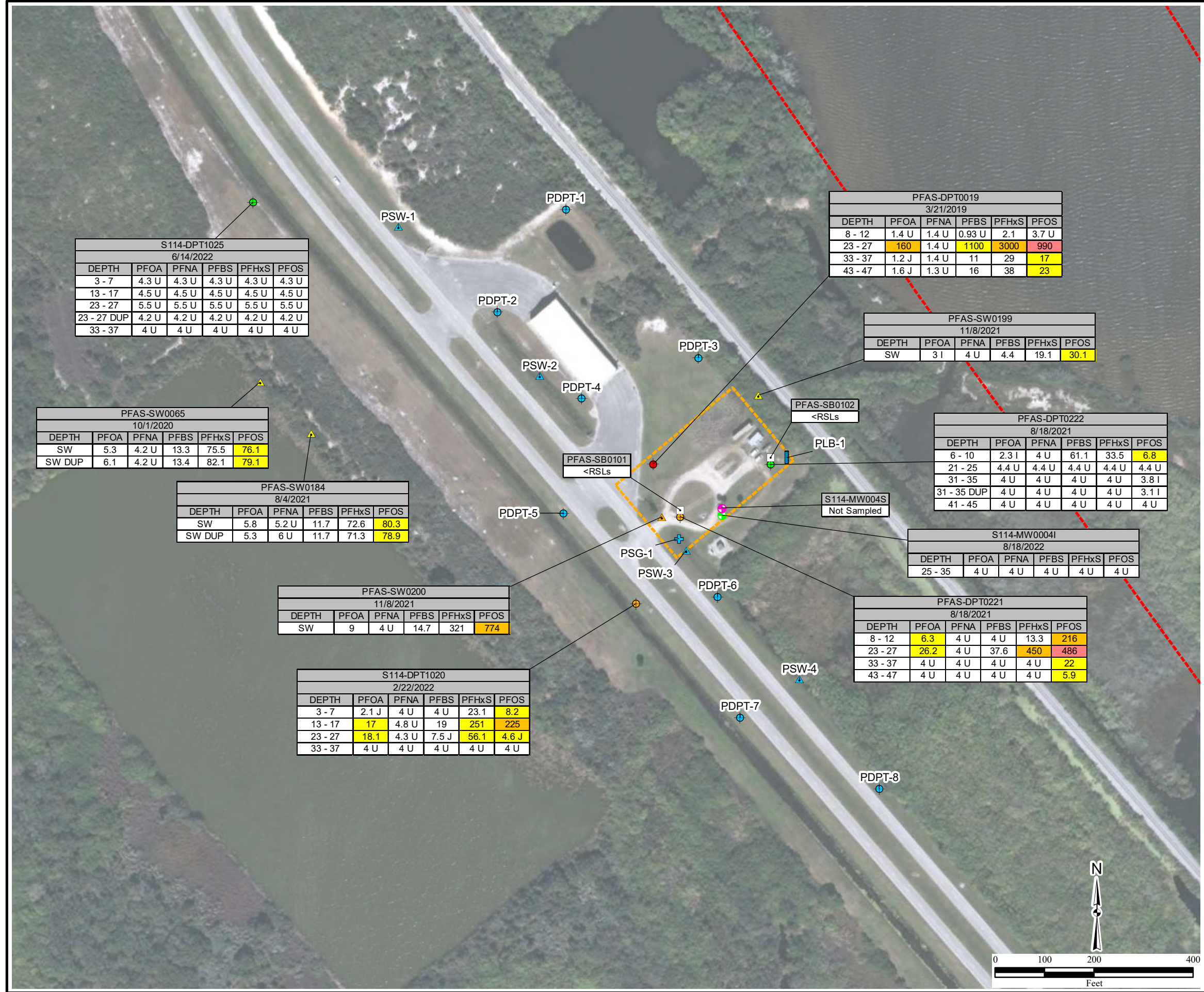
- DPT Sample Concentration Less than RSLs
- DPT Sample Concentration Greater than 10 x RSLs
- DPT Sample Concentration Greater than 100 x RSLs
- ▲ Surface Water Sample Concentration Greater than 10 x RSLs
- ▲ Surface Water Sample Concentration Greater than 10 x RSLs
- Shallow Monitoring Well
- Intermediate Monitoring Well Concentration Less than RSLs
- Soil Sample
- Proposed DPT Sample
- | Proposed Lithologic Boring Location
- + Proposed Staff Gauge
- ▲ Proposed Surface Water Sample Location
- SWMU 114 Boundary
- PRL 237 Boundary

Notes:  
  = concentration greater than RSLs  
  = concentration greater than 10 x RSLs  
  = concentration greater than 100 x RSLs  
 Results in nanograms per liter (ng/L)

I=estimated value  
 J=estimated value  
 PFOA=perfluorooctanoic acid  
 PFNA=perfluorononanoic acid  
 PFHxS=perfluorohexanesulfonic acid  
 PFOS=perfluorooctanesulfonic acid  
 PFBS=perfluorobutanesulfonic acid  
 RSL=regional screening level  
 U=not detected

Sample Location					
Sample Date					
Depth	PFOA	PFNA	PFHxS	PFOS	PFBS
Groundwater RSLs					
PFOA	PFNA	PFHxS	PFOS	PFBS	
6	6	40	4	600	
Surface Water SLs					
PFOS	10 ng/L				
PFOA	500 ng/L				

\\srv-gst-01\hglgis\KSC\_NS1002\_Misc\_Figures\PFOS\_Sites\Work\_Plan\CSBldg7 (02)\CSBldg7\_GW-SW.mxd  
 1/25/2023 TB  
 Source: HGL, ArcGIS Online Imagery



S114-DPT1025					
6/14/2022					
DEPTH	PFOA	PFNA	PFBS	PFHxS	PFOS
3 - 7	4.3 U	4.3 U	4.3 U	4.3 U	4.3 U
13 - 17	4.5 U	4.5 U	4.5 U	4.5 U	4.5 U
23 - 27	5.5 U	5.5 U	5.5 U	5.5 U	5.5 U
23 - 27 DUP	4.2 U	4.2 U	4.2 U	4.2 U	4.2 U
33 - 37	4 U	4 U	4 U	4 U	4 U

PFAS-DPT0019					
3/21/2019					
DEPTH	PFOA	PFNA	PFBS	PFHxS	PFOS
8 - 12	1.4 U	1.4 U	0.93 U	2.1	3.7 U
23 - 27	160	1.4 U	1100	3000	990
33 - 37	1.2 J	1.4 U	11	29	17
43 - 47	1.6 J	1.3 U	16	38	23

PFAS-SW0199					
11/8/2021					
DEPTH	PFOA	PFNA	PFBS	PFHxS	PFOS
SW	3 I	4 U	4.4	19.1	30.1

PFAS-SW0065					
10/1/2020					
DEPTH	PFOA	PFNA	PFBS	PFHxS	PFOS
SW	5.3	4.2 U	13.3	75.5	76.1
SW DUP	6.1	4.2 U	13.4	82.1	79.1

PFAS-SW0184					
8/4/2021					
DEPTH	PFOA	PFNA	PFBS	PFHxS	PFOS
SW	5.8	5.2 U	11.7	72.6	80.3
SW DUP	5.3	6 U	11.7	71.3	78.9

PFAS-SW0200					
11/8/2021					
DEPTH	PFOA	PFNA	PFBS	PFHxS	PFOS
SW	9	4 U	14.7	321	774

S114-DPT1020					
2/22/2022					
DEPTH	PFOA	PFNA	PFBS	PFHxS	PFOS
3 - 7	2.1 J	4 U	4 U	23.1	8.2
13 - 17	17	4.8 U	19	251	225
23 - 27	18.1	4.3 U	7.5 J	56.1	4.6 J
33 - 37	4 U	4 U	4 U	4 U	4 U

PFAS-DPT0222					
8/18/2021					
DEPTH	PFOA	PFNA	PFBS	PFHxS	PFOS
6 - 10	2.3 I	4 U	61.1	33.5	6.8
21 - 25	4.4 U	4.4 U	4.4 U	4.4 U	4.4 U
31 - 35	4 U	4 U	4 U	4 U	3.8 I
31 - 35 DUP	4 U	4 U	4 U	4 U	3.1 I
41 - 45	4 U	4 U	4 U	4 U	4 U

S114-MW004I					
8/18/2022					
DEPTH	PFOA	PFNA	PFBS	PFHxS	PFOS
25 - 35	4 U	4 U	4 U	4 U	4 U

PFAS-DPT0221					
8/18/2021					
DEPTH	PFOA	PFNA	PFBS	PFHxS	PFOS
8 - 12	6.3	4 U	4 U	13.3	216
23 - 27	26.2	4 U	37.6	450	486
33 - 37	4 U	4 U	4 U	4 U	22
43 - 47	4 U	4 U	4 U	4 U	5.9

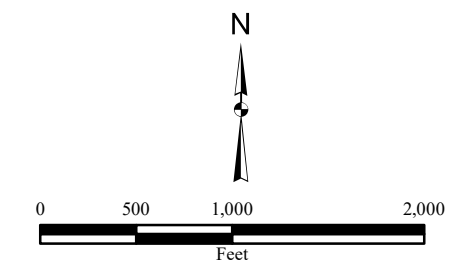
**Figure 3**  
**SWMU #114**  
**Groundwater Elevation Map**  
**Shallow Zone**



**Legend**

- + Staff Gauge Location
- Shallow Zone Monitoring Well
- MW0001S  
 (1.8 - 11.8)  
 -0.49  
 Monitoring Well Identification  
 Screened Interval (ft)  
 Groundwater Elevation (ft amsl, NAVD88)
- Generalized Groundwater Flow Direction
- 1.50- Groundwater Elevation Contour (ft amsl, NAVD88)
- SWMU 114 Boundary

Notes:  
 ft amsl=feet above mean sea level  
 NAVD88=North American Vertical Datum of 1988  
 SWMU=solid waste management unit



\\srv-gst-01\hgl\gis\KSC\_NS1002\_Misc\_Figures\PFOS\_Sites\Work\_Plan\CSBldg7\03\SWMU114\_GWE\_Shallow.mxd  
 1/25/2023 TB  
 Source: HGL, ArcGIS Online Imagery

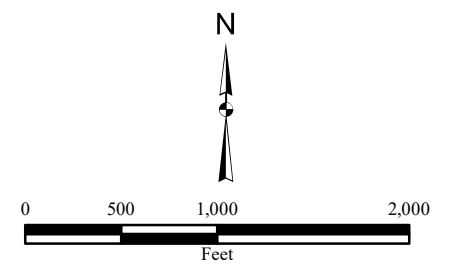
**Figure 4**  
**SWMU #114**  
**Groundwater Elevation Map**  
**Intermediate Zone**



**Legend**

- Intermediate Zone Monitoring Well
- MW00011 Monitoring Well Identification  
 (24.6 - 34.6) Screened Interval (ft)  
-0.44 Groundwater Elevation (ft amsl, NAVD88)
- Generalized Groundwater Flow Direction
- 1.50- Groundwater Elevation Contour (ft amsl, NAVD88)
- SWMU 114 Boundary

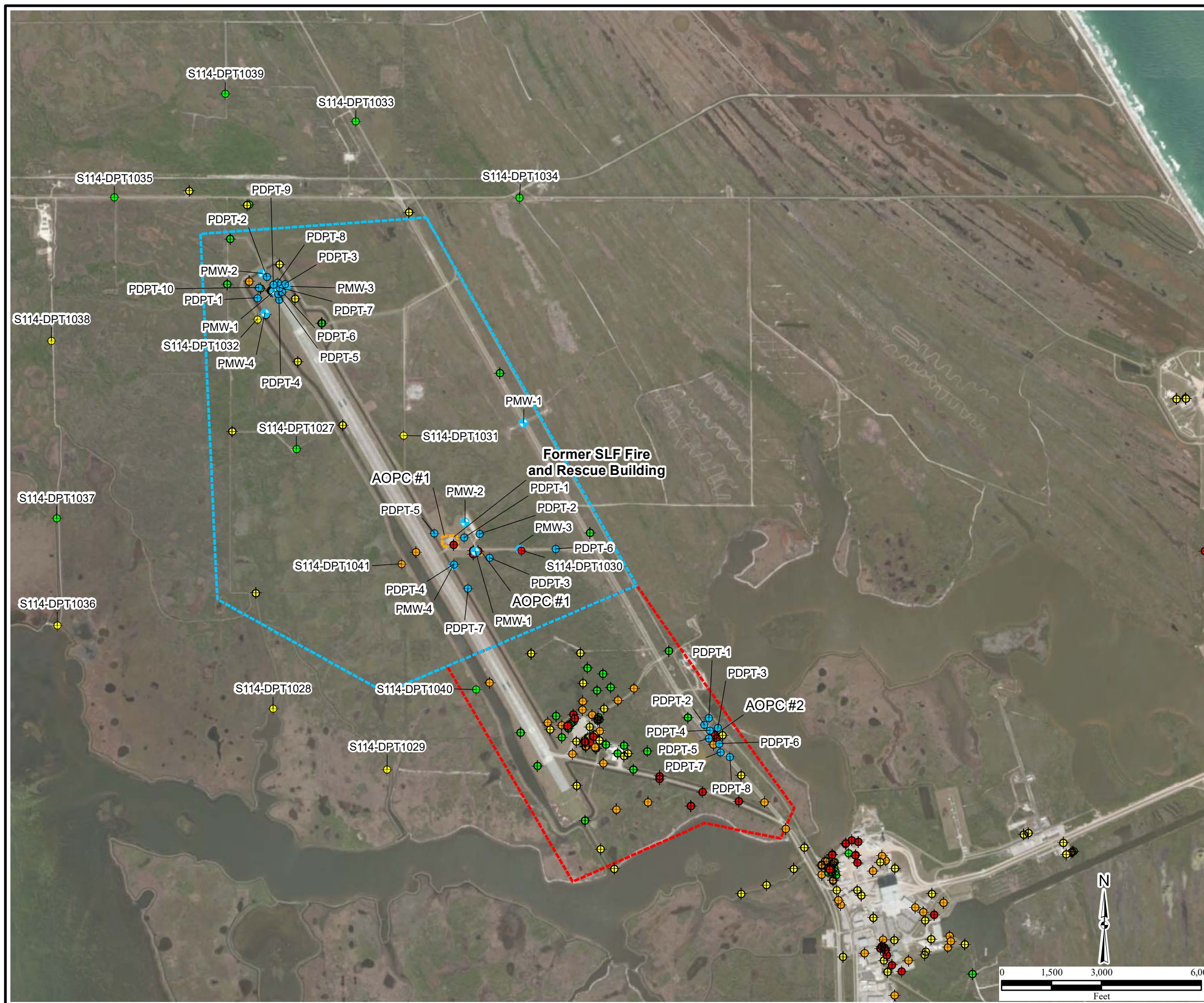
Notes:  
 ft amsl=feet above mean sea level  
 NAVD88=North American Vertical Datum of 1988  
 SWMU=solid waste management unit



\\srv-gst-01\hglgis\KSC\_NS1002\_Misc\_Figures\PFOS\_Sites\Work\_Plan\CSBldg7\04\SWMU114\_GWE\_Int.mxd  
 1/25/2023 TB  
 Source: HGL, ArcGIS Online Imagery



**Figure 5**  
**SLF Area**  
**Regional Proposed DPT Locations**  
**and Monitoring Wells**



**Legend**

- DPT Sample Concentration Less than RSLs
- DPT Sample Concentration Greater than RSLs
- DPT Sample Concentration Greater than 10 x RSLs
- DPT Sample Concentration Greater than 100 x RSLs
- DPT Sample Concentration Greater than 1000 x RSLs
- Proposed DPT Sample
- Proposed Monitoring Well
- SWMU 114 Boundary
- SWMU 119 Boundary
- PRL 237 Boundary

Notes:  
PRL=potential release location  
RSL=regional screening level  
SLF=Shuttle Landing Facility  
SWMU=solid waste management unit

\\srv-gst-01\hgl\gis\KSC\_NS1002\_Misc\_Figures\PFOS\_Sites\Work\_Plan\CSBldg7\05\CSBldg7\_Prop\_DPT.mxd  
1/25/2023 TB  
Source: HGL,  
ArcGIS Online Imagery