

PAPER • OPEN ACCESS

## Arctic warming in response to regional aerosol emissions reductions

To cite this article: Michael Previdi *et al* 2023 *Environ. Res.: Climate* **2** 035011

View the [article online](#) for updates and enhancements.

### You may also like

- [Long-term dynamics of the social space in the Russian Arctic](#)  
E A Korchak
- [China's participation in the international scientific cooperation in the Arctic](#)  
W Yaxin
- [Problems of socio-economic development of the Karelian Arctic and ways to overcome them, taking into account spatial and economic features and the legal status of the region](#)  
A Volkov

# ENVIRONMENTAL RESEARCH CLIMATE



## PAPER

# Arctic warming in response to regional aerosol emissions reductions

### OPEN ACCESS

RECEIVED  
15 June 2023





ACCEPTED FOR PUBLICATION  
6 July 2023

PUBLISHED  
14 July 2023

Original content from  
this work may be used  
under the terms of the  
[Creative Commons  
Attribution 4.0 licence](#).

Any further distribution  
of this work must  
maintain attribution to  
the author(s) and the title  
of the work, journal  
citation and DOI.



Michael Previdi<sup>1,\*</sup> , Jean-François Lamarque<sup>2</sup>, Arlene M Fiore<sup>1,3,4</sup> , Daniel M Westervelt<sup>1,5</sup> ,  
Drew T Shindell<sup>6</sup>, Gustavo Correa<sup>1</sup>  and Gregory Faluvegi<sup>5,7</sup>

<sup>1</sup> Lamont-Doherty Earth Observatory of Columbia University, Palisades, NY, United States of America

<sup>2</sup> National Center for Atmospheric Research, Boulder, CO, United States of America

<sup>3</sup> Department of Earth and Environmental Sciences, Columbia University, New York, NY, United States of America

<sup>4</sup> Department of Earth, Atmospheric, and Planetary Sciences, Massachusetts Institute of Technology, Cambridge, MA, United States of America

<sup>5</sup> NASA Goddard Institute for Space Studies, New York, NY, United States of America

<sup>6</sup> Nicholas School of the Environment, Duke University, Durham, NC, United States of America

<sup>7</sup> Center for Climate Systems Research, Columbia University, New York, NY, United States of America

\* Author to whom any correspondence should be addressed.

E-mail: [mprevidi@ldeo.columbia.edu](mailto:mprevidi@ldeo.columbia.edu)

**Keywords:** Arctic climate change, Arctic amplification, aerosols, global climate models, radiative forcing, climate feedbacks, energy transport

Supplementary material for this article is available [online](#)

## Abstract

This study examines the Arctic surface air temperature response to regional aerosol emissions reductions using three fully coupled chemistry–climate models: National Center for Atmospheric Research–Community Earth System Model version 1, Geophysical Fluid Dynamics Laboratory–Coupled Climate Model version 3 (GFDL–CM3) and Goddard Institute for Space Studies–ModelE version 2. Each of these models was used to perform a series of aerosol perturbation experiments, in which emissions of different aerosol types (sulfate, black carbon (BC), and organic carbon) in different northern mid-latitude source regions, and of biomass burning aerosol over South America and Africa, were substantially reduced or eliminated. We find that the Arctic warms in nearly every experiment, the only exceptions being the U.S. and Europe BC experiments in GFDL–CM3 in which there is a weak and insignificant cooling. The Arctic warming is generally larger than the global mean warming (i.e. Arctic amplification occurs), particularly during non-summer months. The models agree that changes in the poleward atmospheric moisture transport are the most important factor explaining the spread in Arctic warming across experiments: the largest warming tends to coincide with the largest increases in moisture transport into the Arctic. In contrast, there is an inconsistent relationship (correlation) across experiments between the local radiative forcing over the Arctic and the simulated Arctic warming, with this relationship being positive in one model (GFDL–CM3) and negative in the other two. Our results thus highlight the prominent role of poleward energy transport in driving Arctic warming and amplification, and suggest that the relative importance of poleward energy transport and local forcing/feedbacks is likely to be model dependent.

## 1. Introduction

The Arctic has experienced rapid warming over recent decades (Gulev *et al* 2021), with this warming occurring about four times faster than the global mean warming since 1979 (Chylek *et al* 2022, Rantanen *et al* 2022). While the dominant role of anthropogenic greenhouse gases (GHGs) in driving the recent Arctic warming is well established (e.g. Najafi *et al* 2015, Polvani *et al* 2020, England 2021, Aizawa *et al* 2022), other anthropogenic forcings—notably, aerosols—may have contributed as well. England (2021) found that

anthropogenic aerosol forcing warmed the Arctic at a rate of  $0.18\text{ }^{\circ}\text{C}/\text{decade}$  during 1975–2019 (compared with a warming of  $0.59\text{ }^{\circ}\text{C}/\text{decade}$  during this period from GHGs). This aerosol-induced warming is a result of reductions in aerosol (and aerosol precursor) emissions from the United States and Europe (Acosta Navarro *et al* 2016, Wang *et al* 2018). In contrast, increases in aerosol emissions from Asia in recent decades have likely contributed to Arctic cooling (Yang *et al* 2014, Wang *et al* 2018), thus opposing the observed warming. These increases in Asian emissions are not expected to continue, however, as efforts to improve air quality are likely to result in decreases in anthropogenic aerosol emissions from Asia over the next several decades (Lund *et al* 2019). These decreases in Asian emissions could contribute significantly to Arctic warming and sea-ice loss (Wang *et al* 2018, Merikanto *et al* 2021), thus enhancing the effects of rising GHGs.

Motivated by these potential impacts of anthropogenic aerosol forcing on Arctic climate, we here examine the Arctic climate response to several different regional aerosol emissions reductions using three coupled chemistry–climate models: the Community Earth System Model version 1 (CESM1) which was run at the National Center for Atmospheric Research (NCAR-CESM1), the Geophysical Fluid Dynamics Laboratory (GFDL) Coupled Climate Model version 3 (GFDL-CM3), and the Goddard Institute for Space Studies (GISS) ModelE version 2 (GISS-E2-R). Within each of these models, emissions of sulfur dioxide ( $\text{SO}_2$ , precursor to sulfate aerosol) and/or carbonaceous aerosol from six world regions (the United States, Europe, China, India, South America, and Africa) were instantaneously reduced or eliminated (see section 2.1 for additional details). The climate response to these emissions reductions was then computed as the difference relative to a long control simulation with fixed year 2000 or 2005 emissions.

This same set of model experiments was recently used by Westervelt *et al* (2020) to assess the global and regional surface temperature response to regional aerosol emissions reductions. While the Arctic was shown to warm in most experiments, the physical mechanisms underlying this warming response were not explored. Here, we aim to provide a mechanistic understanding of the Arctic warming response to regional aerosol emissions reductions. By analyzing the perturbation atmospheric energy budget, we show that enhanced moisture transport into the Arctic due to aerosol forcing is a leading-order factor explaining the Arctic warming response in all models. Less robust across models are the relationships between local radiative forcing and feedbacks and Arctic warming, which can be of opposite sign in different models.

## 2. Methods

### 2.1. Model experiments

As noted above, we employ simulations with perturbed regional aerosol emissions from three different models: NCAR-CESM1 (Neale *et al* 2012), GFDL-CM3 (Donner *et al* 2011), and GISS-E2-R (Schmidt *et al* 2014). Each of these models includes active atmosphere, ocean, sea ice, and land surface components, and has fully interactive chemistry of aerosols and trace gases. All models represent the aerosol direct and first indirect (cloud albedo) effects, while NCAR-CESM1 and GFDL-CM3 additionally represent the second indirect (cloud lifetime) effect. The model configurations used here are very similar to those that were used for Coupled Model Intercomparison Project phase 5 (CMIP5). For additional model description and model evaluation, we refer readers to Westervelt *et al* (2017) and Naik *et al* (2013).

For each model, we completed a long (up to 400 years) control simulation with fixed year 2000 (2005 for NCAR-CESM1) boundary conditions (including emissions of aerosols and aerosol precursors). From this control simulation, we then launched several additional simulations in which regional aerosol emissions were perturbed in various ways. These perturbation simulations are summarized in table 1. Briefly, we instantaneously reduced or eliminated the emissions of  $\text{SO}_2$ , black carbon (BC), and organic carbon (OC) from six world regions (the United States, Europe, China, India, South America, and Africa). In some experiments (e.g. USO2), a single aerosol (or precursor) species was perturbed, whereas in other experiments (e.g. UALL) multiple species were perturbed simultaneously. All 14 experiments listed in table 1 were completed with the GFDL-CM3. For NCAR-CESM1 (GISS-E2-R), 12 (8) of these experiments were completed.

Each aerosol perturbation experiment includes two companion simulations: a fully coupled atmosphere–ocean simulation of 160–240 years in length, and a fixed sea surface temperature (SST) simulation of 40–80 years in length. In the fixed SST simulations (which include a year 2000 (or 2005 for NCAR-CESM1) control), only the atmosphere and land surface components of the models are active, with SSTs and sea-ice concentrations prescribed to follow a repeating climatological seasonal cycle (but with no other time variation). We compute the climate response to a given aerosol perturbation as the difference between the perturbation simulation and the control simulation. More specifically, we difference each time in the perturbation simulation from the corresponding time in the control simulation, and then average over all times, which removes the effects of any drift in the (coupled) control simulation.

**Table 1.** Model experiments analyzed in the present study. Listed are the experiment name, the region where emissions are perturbed, the aerosol or aerosol precursor species perturbed, the emissions perturbation amount (roughly the same for all models; values in parentheses are the percentage reduction in emissions relative to the control experiment), and the models that completed each experiment.

Experiment name	Region	Species <sup>a</sup>	Perturbation amount (Tg yr <sup>-1</sup> ) (%)	Models
ESO2	Europe	SO <sub>2</sub>	18 (80%)	All
EBC	Europe	BC	0.8 (100%)	NCAR, GFDL
EOC	Europe	OC	2 (100%)	NCAR, GFDL
EALL	Europe	SO <sub>2</sub> , BC, OC	Sum of above	GFDL
USO2	United States	SO <sub>2</sub>	15 (100%)	All
UBC	United States	BC	0.4 (100%)	NCAR, GFDL
UOC	United States	OC	0.8 (100%)	NCAR, GFDL
UALL	United States	SO <sub>2</sub> , BC, OC	Sum of above	All
CSO2	China	SO <sub>2</sub>	15 (80%)	All
ISO2	India	SO <sub>2</sub>	5.6 (100%)	All
IBC	India	BC	0.6 (100%)	All
IOC	India	OC	2.78 (100%)	GFDL
SABB	South America	BB SO <sub>2</sub> , BC, OC	0.4 (SO <sub>2</sub> ), 0.4 (BC), 4.7 (OC) (100%)	All
AFBB	Africa	BB SO <sub>2</sub> , BC, OC	0.4 (SO <sub>2</sub> ), 0.4 (BC), 5.3 (OC) (33%)	All

<sup>a</sup> SO<sub>2</sub>: sulfur dioxide, BC: black carbon, OC: organic carbon, BB: biomass burning.

Finally, it is worth noting that the same set of model experiments described here was previously used by Westervelt *et al* (2020) to assess the global and regional surface temperature response to regional aerosol emissions reductions (as mentioned above), and by Westervelt *et al* (2018) to assess the precipitation response to these emissions reductions. Additionally, the surface temperature and precipitation responses in just the USO2 experiment (see table 1) were previously assessed by Conley *et al* (2018) and Westervelt *et al* (2017), respectively.

## 2.2. Energy budget analysis

We analyze the perturbation atmospheric energy budget in order to understand the Arctic annual-mean surface air temperature (SAT) response to regional aerosol emissions reductions. The perturbation energy budget can be expressed as:

$$\Delta R - \Delta \text{OHU} + \Delta \text{AHT} = 0 \quad (1)$$

where  $R$  is the net downward top-of-atmosphere (TOA) radiation, OHU is the ocean heat uptake (i.e. net downward surface energy flux), AHT is the convergence of the atmospheric heat transport, and  $\Delta$  is the response to aerosol forcing (i.e. the difference between the perturbation and control simulations). Note that since we are focused here on annual time scales, the atmospheric energy storage has been ignored (i.e. assumed to be zero).

The TOA radiation response  $\Delta R$  can be decomposed into a radiative forcing  $\Delta F$  and radiative feedbacks, with the latter assumed proportional to the SAT response:

$$\Delta R = \Delta F + \lambda \Delta \text{SAT} \quad (2)$$

where  $\lambda$  is referred to as the feedback parameter. Substituting (2) into (1) and solving for  $\Delta \text{SAT}$  yields:

$$\Delta \text{SAT} = \frac{\Delta F - \Delta \text{OHU} + \Delta \text{AHT}}{-\lambda} \quad (3)$$

We take  $\Delta F$  to be the effective radiative forcing (ERF), which we estimate as the net TOA radiation response in the fixed SST simulations (e.g. Forster *et al* 2016, Smith *et al* 2020). The feedback parameter  $\lambda$  is estimated as the slope of the regression line obtained by regressing annual-mean  $\Delta R$  against  $\Delta \text{SAT}$ , using output from the coupled atmosphere–ocean simulations (Gregory *et al* 2004). With these estimates of  $\Delta F$  and  $\lambda$ , and using model output  $\Delta \text{SAT}$  and  $\Delta \text{OHU}$  (from the coupled simulations), we then estimate  $\Delta \text{AHT}$  as a residual in equation (3).

The total AHT response  $\Delta \text{AHT}$  can be decomposed into responses of the dry static energy (DSE) flux convergence  $\Delta \text{AHT}_{\text{dse}}$  and moisture flux convergence  $\Delta \text{AHT}_{\text{q}}$ :

$$\Delta \text{AHT} = \Delta \text{AHT}_{\text{dse}} + \Delta \text{AHT}_{\text{q}} \quad (4)$$

Substituting (4) into (3) yields:

$$\Delta\text{SAT} = \frac{\Delta F - \Delta\text{OHU} + \Delta\text{AHT}_{\text{dse}} + \Delta\text{AHT}_{\text{q}}}{-\lambda} \quad (5)$$

We estimate  $\Delta\text{AHT}_{\text{q}}$  as a residual in the atmospheric moisture budget:

$$\Delta\text{AHT}_{\text{q}} = \Delta P - \Delta E \quad (6)$$

where  $P$  and  $E$  are the surface precipitation and evaporation, and atmospheric moisture storage has been ignored. Finally,  $\Delta\text{AHT}_{\text{dse}}$  is computed as the difference between  $\Delta\text{AHT}$  and  $\Delta\text{AHT}_{\text{q}}$ .

Equation (5) represents our working form of the perturbation atmospheric energy budget. In section 3.2, we evaluate the different terms on the right-hand side of this equation in order to understand the SAT response in our model experiments. Terms in equation (5) are generally averaged annually and over the Arctic region (60° N–90° N), although we also briefly consider in our analysis the SAT response averaged globally, and the ERF averaged globally and over Northern Hemisphere (NH) midlatitudes (30° N–60° N). Note that when averaged over the Arctic,  $\Delta\text{AHT}_{\text{dse}}$  and  $\Delta\text{AHT}_{\text{q}}$  are equivalent to the changes in the poleward fluxes of DSE and moisture across 60° N.

### 2.3. Quantification of uncertainty

We quantify the uncertainty in the mean SAT response by computing the 95% confidence interval (CI) for this mean response:

$$\text{CI}_{\Delta\text{SAT}} = \pm \left( t_{N-1} \times \frac{\Delta\text{SAT}_{\text{std}}}{\sqrt{N}} \right) \quad (7)$$

where  $N$  is the sample size,  $t_{N-1}$  is the critical value from the  $t$  distribution for  $N-1$  degrees of freedom, and  $\Delta\text{SAT}_{\text{std}}$  is the standard deviation of the SAT response. When the mean SAT response is an average over time in a particular model experiment, we account for autocorrelation in the model time series by computing an effective sample size  $N_{\text{eff}}$  ( $N_{\text{eff}} \leq N$ ; e.g. Zwiers and von Storch 1995, Santer *et al* 2000, Conley *et al* 2018):

$$N_{\text{eff}} = N \times \frac{1 - r_1}{1 + r_1} \quad (8)$$

where  $r_1$  is the lag-1 autocorrelation. In this case,  $N_{\text{eff}}$  is used in equation (7) both in the computation of the standard error ( $\Delta\text{SAT}_{\text{std}}/\sqrt{N_{\text{eff}}}$ ), and in the indexing of the critical  $t$  value. Note that when the mean SAT response is an average over time in a particular model experiment,  $\Delta\text{SAT}_{\text{std}}$  in equation (7) is the standard deviation of the annual-mean  $\Delta\text{SAT}$  time series for that experiment. In this case,  $\text{CI}_{\Delta\text{SAT}}$  is an estimate of the uncertainty in the mean (forced) SAT response in that experiment due to internal climate variability.

In section 3.2, we use least-squares linear regression to quantify the relationship between the SAT response and the various terms in the perturbation atmospheric energy budget (equation (5)) across the model experiments. The slope of the regression line  $m$  has a 95% CI given by:

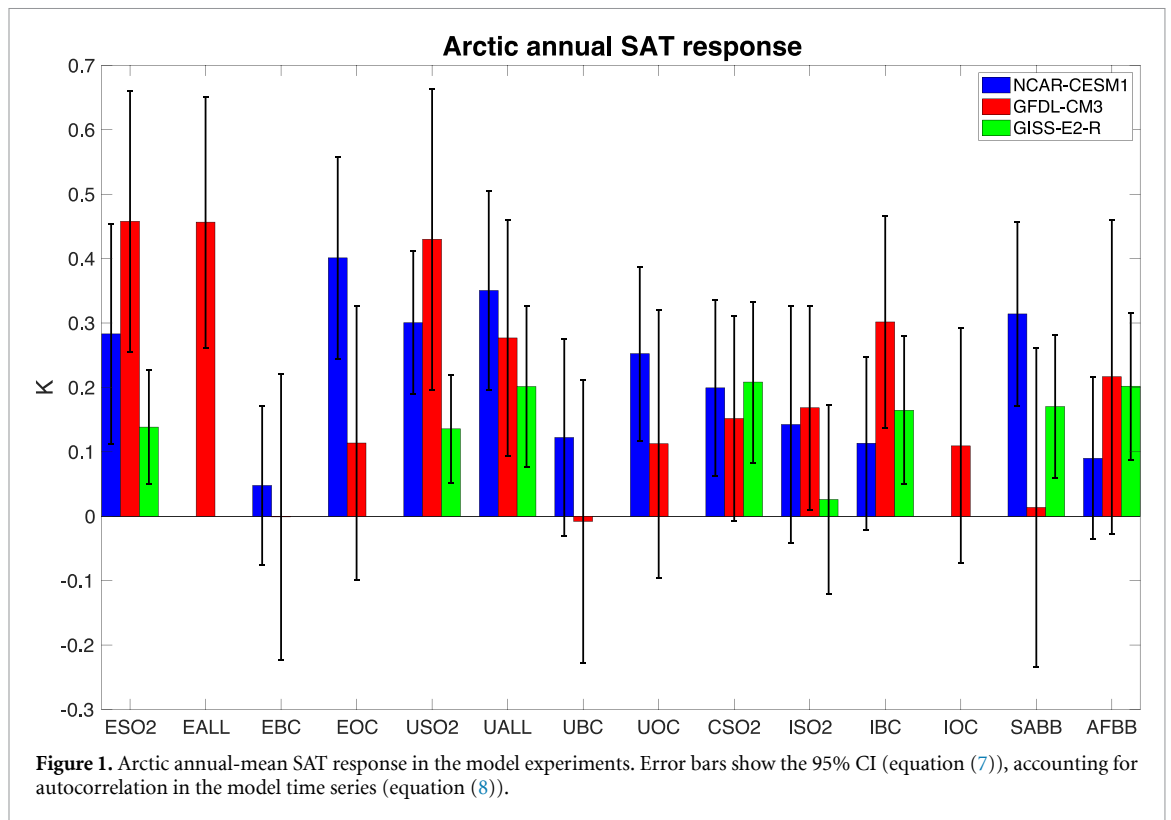
$$\text{CI}_m = \pm \left( t_{N-2} \times \sqrt{\left( \frac{1}{N-2} \times \frac{\sum_{i=1}^N (y - \hat{y})^2}{\sum_{i=1}^N (x - \bar{x})^2} \right)} \right) \quad (9)$$

where  $y - \hat{y}$  are the regression residuals, an overbar indicates a mean (in this case, over all experiments), and  $t_{N-2}$  is the critical value from the  $t$  distribution for  $N-2$  degrees of freedom. In our analysis,  $y$  in equation (9) will typically be defined as the model-simulated SAT response (with corresponding least-squares estimate  $\hat{y}$ ), and  $x$  will typically be defined as a given term in the perturbation energy budget. The sample size  $N$  in this case is the number of experiments in a given model (see table 1).

## 3. Results

### 3.1. Arctic SAT response

We begin by considering the annual-mean SAT response averaged over the Arctic region (figure 1). In nearly all model experiments, the Arctic warms in response to regional aerosol emissions reductions. This warming is statistically significant (i.e. error bars in figure 1 (bracketing the 95% CI) do not overlap zero) in about half of the experiments in NCAR-CESM1 and GFDL-CM3 (7 out of 12 experiments and 6 out of 14 experiments, respectively), and nearly all (7 out of 8) of the experiments in GISS-E2-R. Averaged over all experiments, we find a similar Arctic warming response in the three models:  $0.22 \pm 0.06$  K in NCAR-CESM1,  $0.20 \pm 0.09$  K



in GFDL-CM3, and  $0.16 \pm 0.04$  K in GISS-E2-R (mean response  $\pm$  95% CI). However, although the mean responses are similar, the variation in the Arctic warming response across the experiments is not well correlated between different pairs of models, with a correlation coefficient  $r$  of 0.27 between NCAR-CESM1 and GFDL-CM3, 0.16 between NCAR-CESM1 and GISS-E2-R, and  $-0.08$  between GFDL-CM3 and GISS-E2-R (all correlations are insignificant). Despite this lack of correlation, we will show in section 3.2 that a common physical mechanism (atmospheric moisture transport) largely explains the spread in Arctic warming response in all three models.

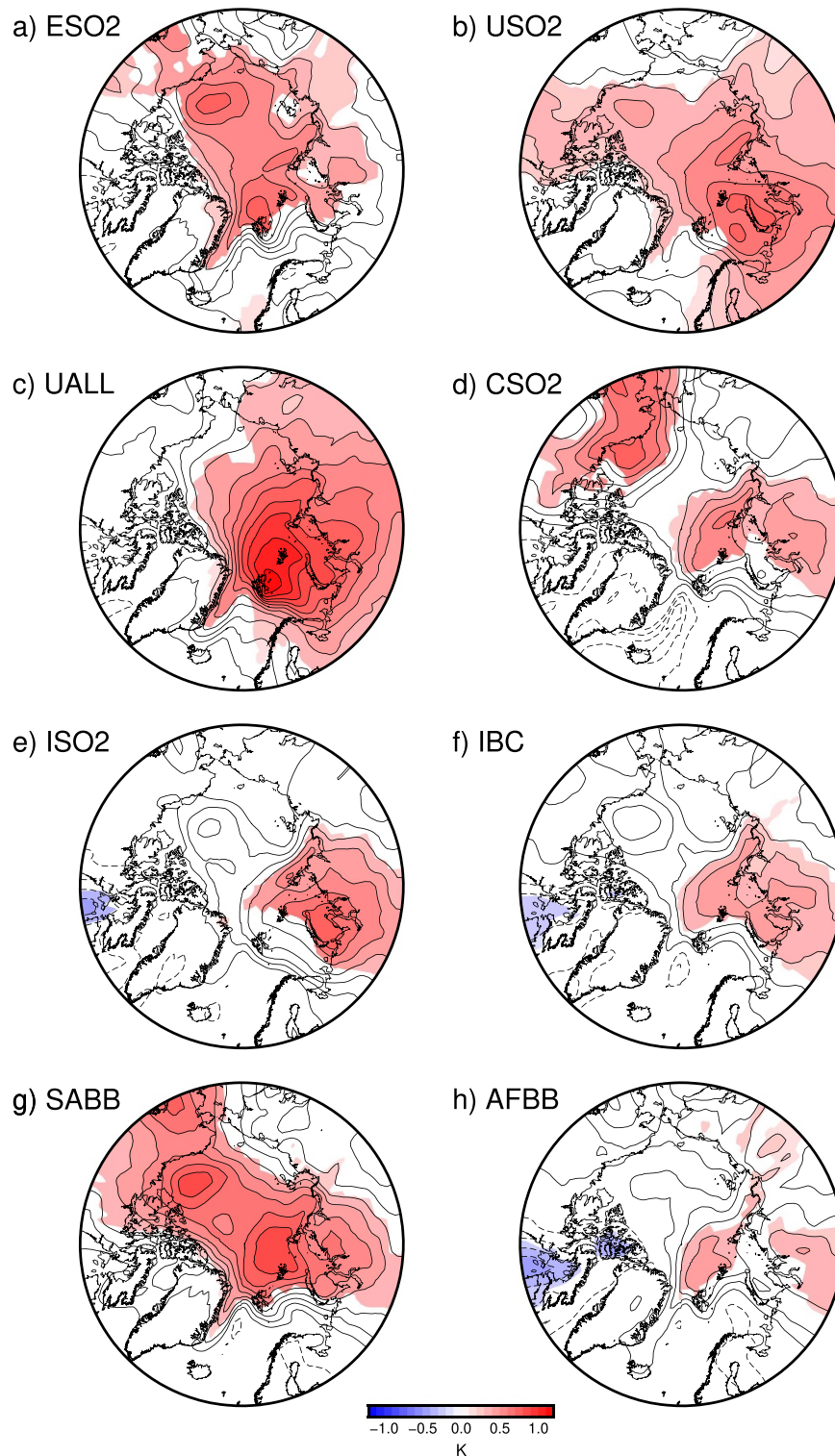
We next examine the spatial patterns of annual-mean SAT response over the Arctic, as shown in figures 2–4 for the eight experiments common to all three models, and in figures S1 and S2 for the remaining experiments. In some cases, different experiments in a given model can yield broadly similar spatial patterns of SAT response, for instance the ISO2 and IBC experiments in NCAR-CESM1 (figures 2(e) and (f)). More commonly, however, there are notable differences in the SAT response patterns, both within a given model, and for the same experiment in different models. As an example of the latter, we consider the ISO2 experiment that is common to all models. In NCAR-CESM1 (figure 2(e)), this experiment produces an area of statistically significant warming (red shading) over Western Russia and the Kara Sea, with a smaller area of significant cooling (blue shading) evident over Hudson Bay. In GFDL-CM3 (figure 3(e)), significant warming in ISO2 occurs further to the north and west over Svalbard, Franz Josef Land, the Greenland Sea and portions of the Arctic Ocean, with an absence of any significant cooling. Finally, in GISS-E2-R (figure 4(e)), statistically significant SAT responses in ISO2 are mostly limited to a small area of weak warming occurring over northern Hudson Bay and Baffin Island.

We also briefly consider another experiment that is common to all models: CSO2. The Arctic mean warming in this experiment is quite similar in the three models (figure 1), yet there are clear differences in the spatial patterns of SAT response. All models simulate a warming dipole across the Arctic Ocean in CSO2, but the strength of this dipole varies significantly, being strongest in NCAR-CESM1 (figure 2(d)) and weakest in GFDL-CM3 (figure 3(d)), with GISS-E2-R (figure 4(d)) somewhere in the middle. These examples thus serve to illustrate that even for the same aerosol emissions perturbation, different models can sometimes produce quite different climate responses over the Arctic.

SAT responses by month of year are shown in figure 5 for the eight experiments common to all three models, and in figure S3 for the remaining experiments. In both figures, Arctic mean SAT responses are depicted as colored lines, and global mean SAT responses as colored crosses. It is clear that Arctic SAT responses exhibit greater seasonality than global responses, with the former tending to maximize in the

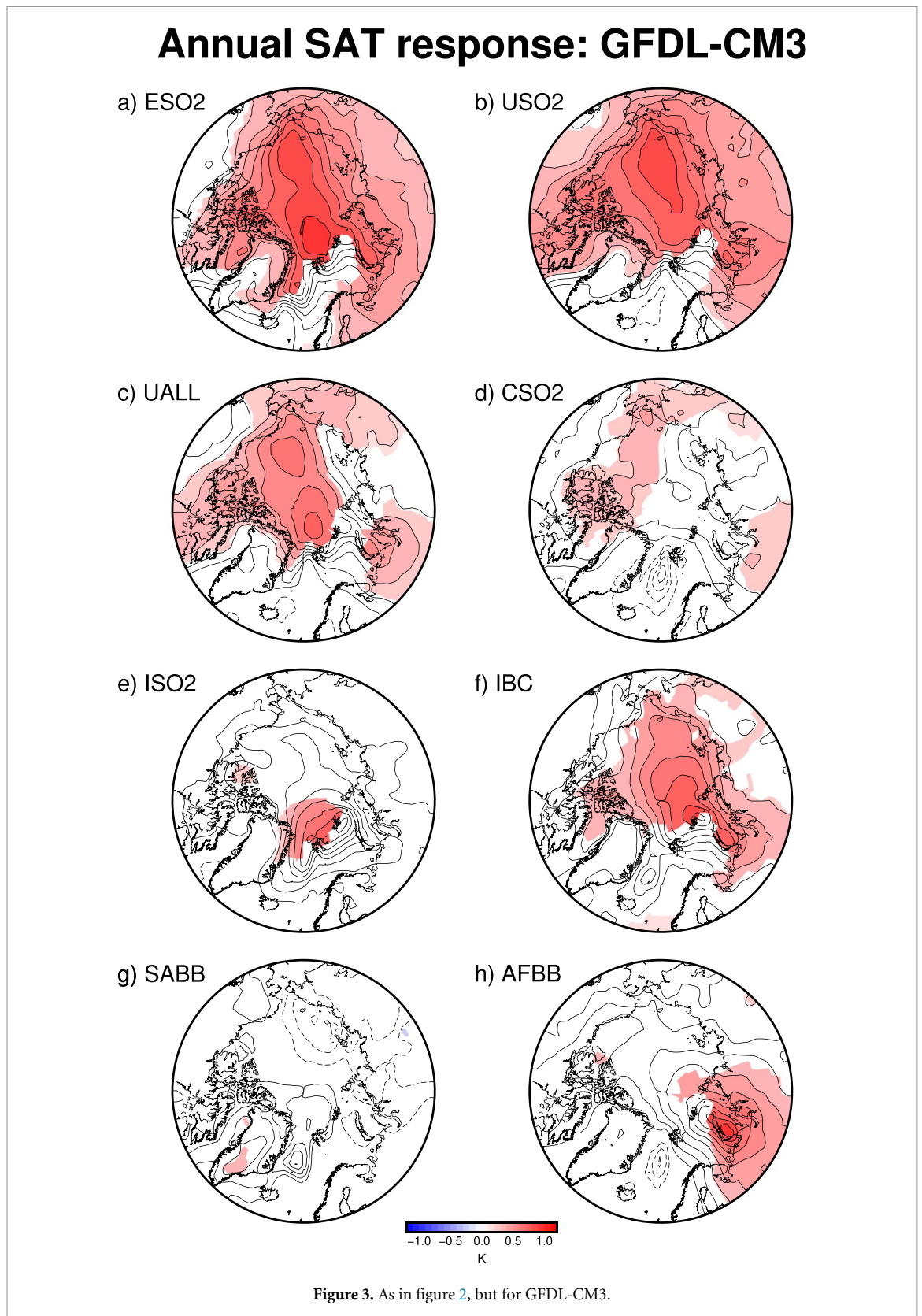


## Annual SAT response: NCAR-CESM1



**Figure 2.** Annual-mean SAT response in NCAR-CESM1 for the eight experiments that are common to all three models. The response is plotted using a contour interval of 0.1 K with negative contours dashed and the zero contour excluded. Shading indicates that the response is statistically significant (i.e. 95% CI does not overlap zero). The 95% CI of the mean response is computed using equation (7), accounting for autocorrelation (equation (8)).

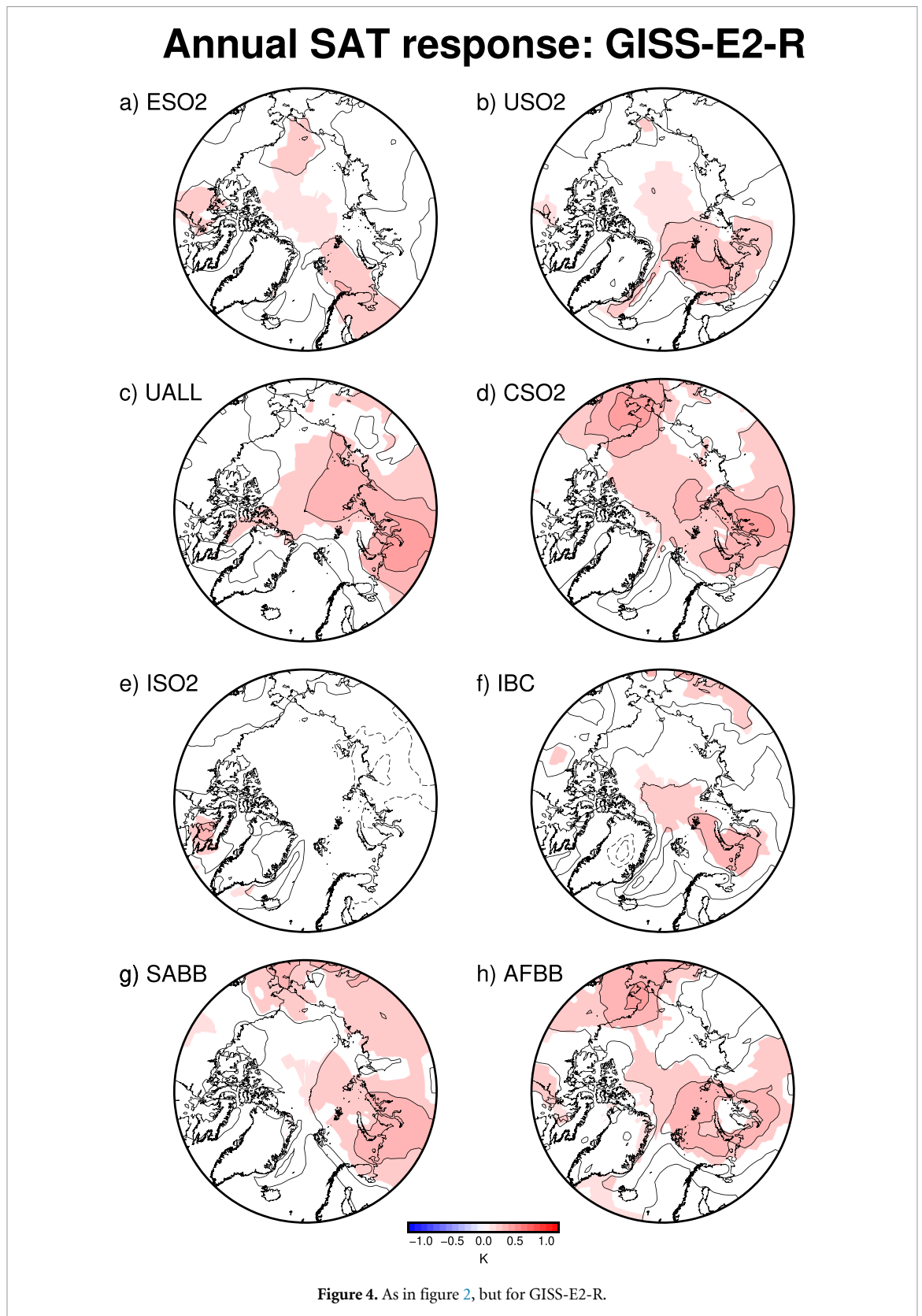
non-summer months and the latter fairly constant throughout the year. Arctic warming responses tend to be larger than global warming responses, indicating that Arctic amplification (AA) is occurring in these simulations. This is particularly true during the non-summer months, which fits with the expected seasonality of AA (Previdi *et al* 2021).



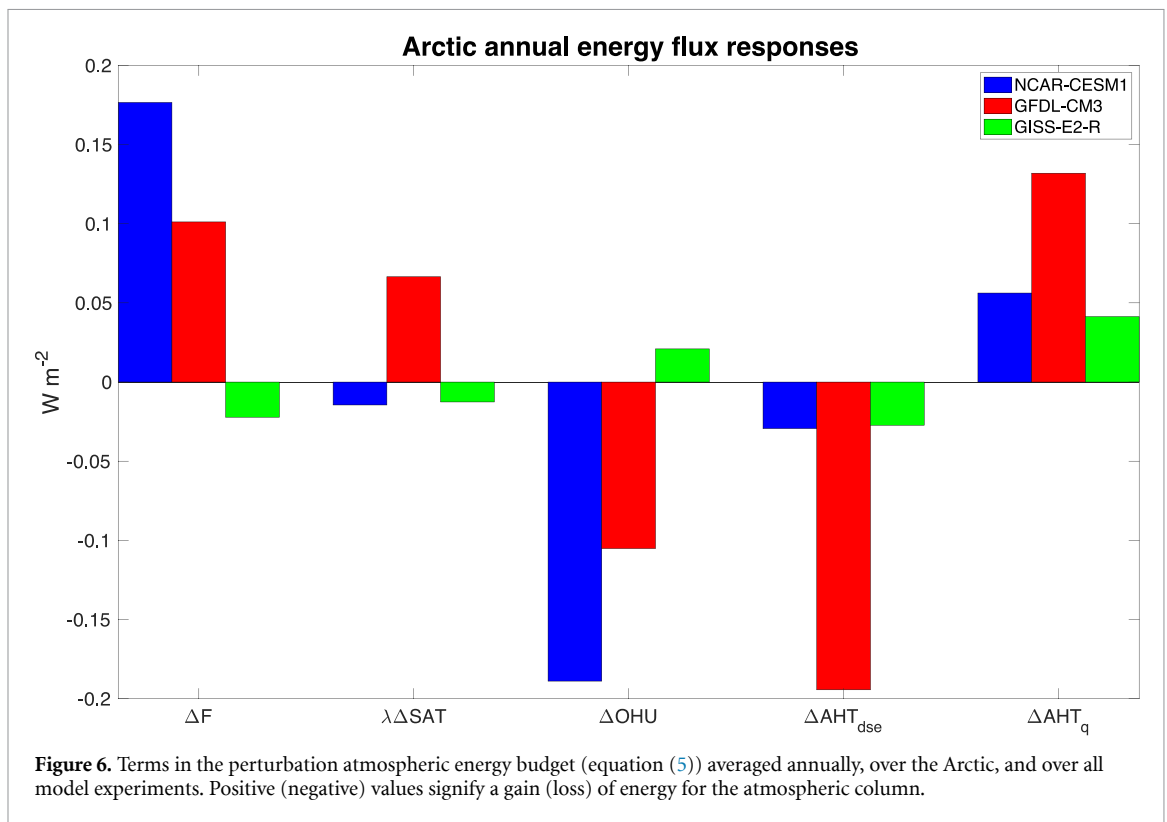
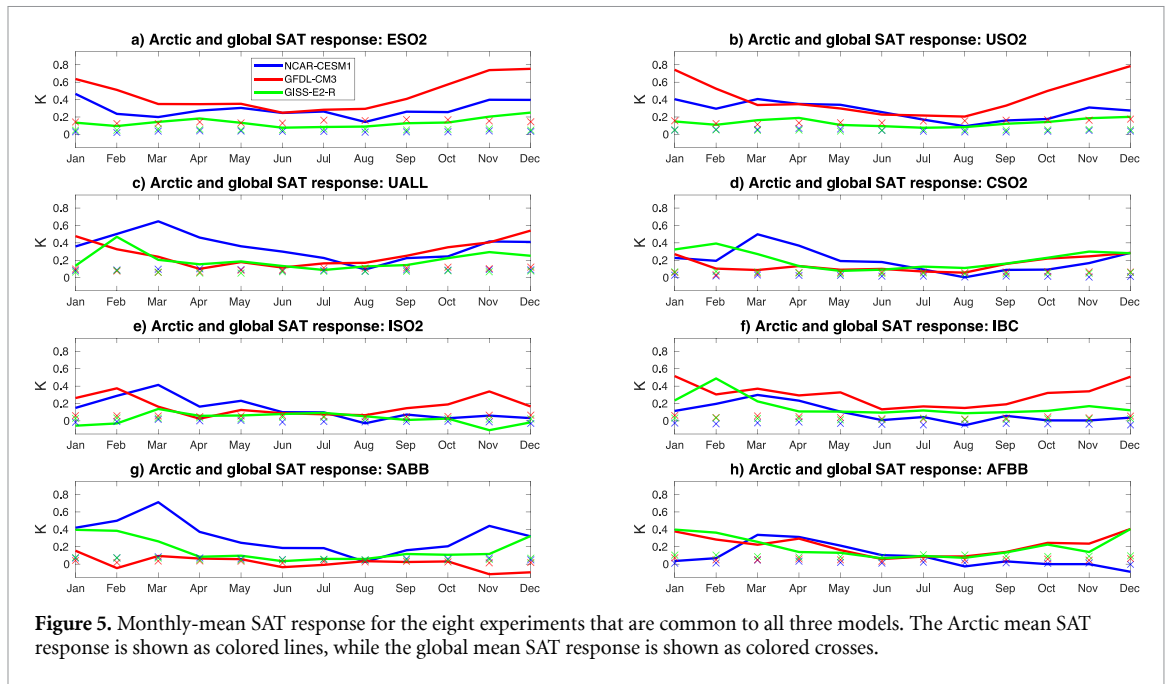
### 3.2. Energy budget analysis

We next analyze the perturbation atmospheric energy budget (see section 2.2) in order to understand the Arctic annual-mean SAT response in our model experiments. We focus on two aspects of the Arctic SAT response in each model: the mean SAT response averaged over all experiments, and the spread in the SAT response across the experiments.

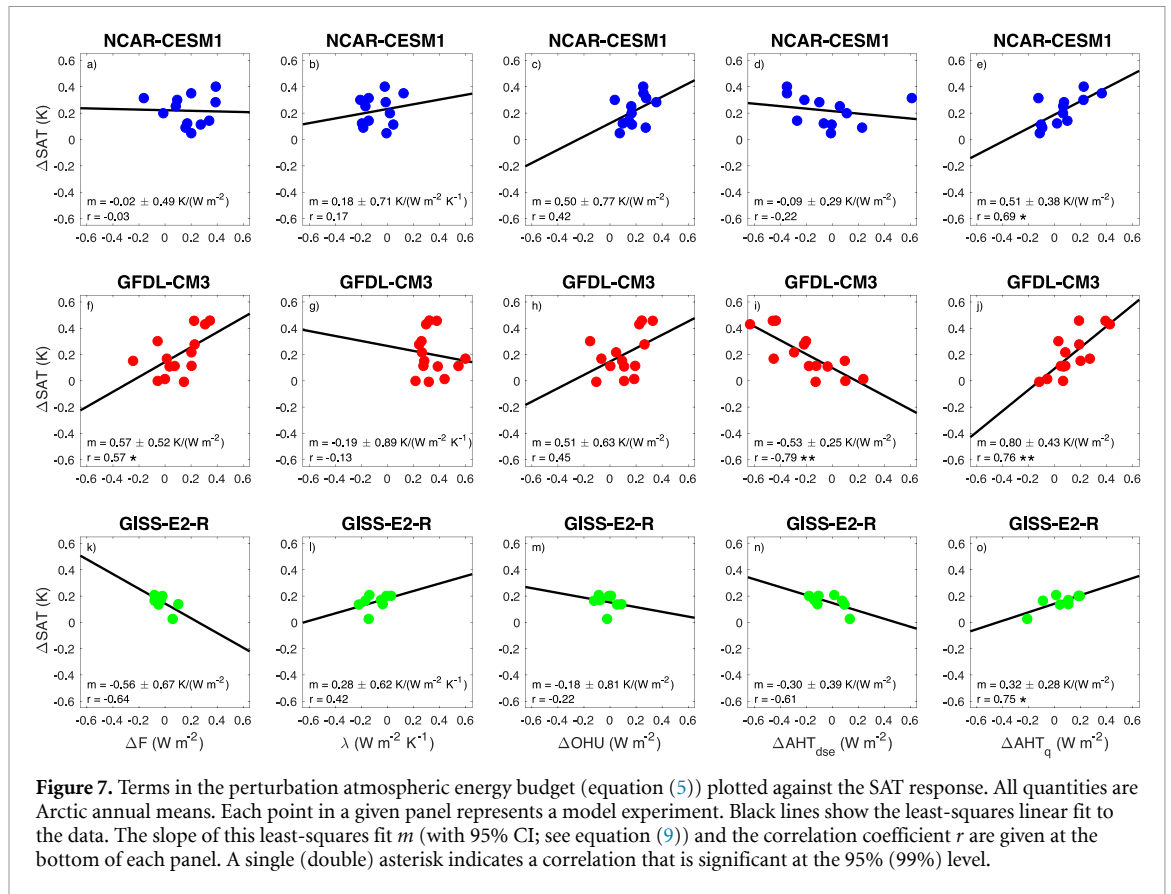




As noted in section 3.1, the mean Arctic SAT response averaged over all experiments is similar in the three models:  $0.22 \pm 0.06$  K in NCAR-CESM1,  $0.20 \pm 0.09$  K in GFDL-CM3, and  $0.16 \pm 0.04$  K in GISS-E2-R. In order to identify the processes responsible for producing this mean response, we average each term in the perturbation energy budget (equation (5)) over all model experiments (figure 6). A positive (negative) value for a given energy budget term signifies that, on average, that term contributes to a gain (loss) of energy for the Arctic atmosphere, and thus contributes to (opposes) the mean warming response. To



begin, we note that the contribution of local radiative forcing over the Arctic ( $\Delta F$ ) to the mean warming response is of opposite sign in different models, being positive in NCAR-CESM1 and GFDL-CM3 and negative in GISS-E2-R. In all models, however, this contribution of  $\Delta F$  is offset by a similar magnitude but opposite-signed response of the OHU ( $\Delta OHU$ ). The contribution of local radiative feedbacks over the Arctic ( $\lambda \Delta SAT$ ) to the mean warming response is also of opposite sign in different models, being positive in GFDL-CM3 and negative in NCAR-CESM1 and GISS-E2-R. This is consistent with a previous multi-model analysis (Block *et al* 2020) of the CMIP5 abrupt  $4 \times CO_2$  experiment, in which it was shown that the total radiative feedback in the Arctic (i.e.  $\lambda$ ) can be positive or negative depending on the model. Lastly, all three models in our analysis agree on the sign of  $\Delta AHT_{dse}$  and  $\Delta AHT_q$ . The former is negative, indicating decreased DSE transport into the Arctic, which is expected from reductions in the meridional temperature

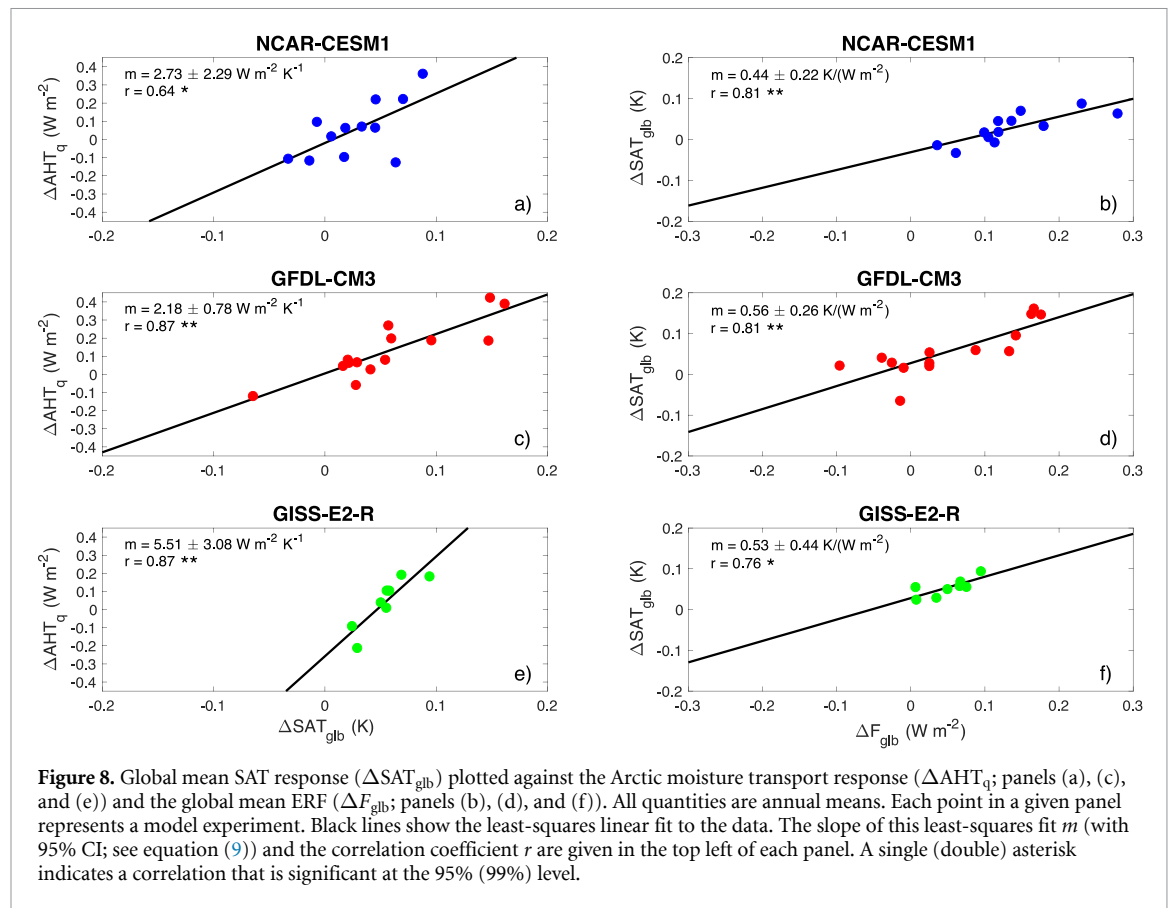


gradient due to polar-amplified warming (see figures 5 and S3; Langen and Alexeev 2007, Hwang *et al* 2011, Skific and Francis 2013, Graversen and Burtu 2016, Audette *et al* 2021). The latter is positive, indicating increased moisture transport into the Arctic. The physical reason for this increased moisture transport will be discussed below. Here, we simply note that  $\Delta\text{AHT}_q$  is the largest contributor to the mean Arctic warming response in both GFDL-CM3 and in GISS-E2-R. In NCAR-CESM1, this term is the second largest contributor to the mean warming response behind  $\Delta F$ .

Before proceeding to discuss the spread in Arctic warming across the experiments, we note that the mean energy flux responses shown in figure 6 are generally consistent in sign with the majority of the individual experiments. The only instance where this is not the case is for  $\Delta\text{AHT}_{\text{dse}}$  in GISS-E2-R, where equal numbers of the individual experiments exhibit positive and negative responses. For  $\Delta\text{AHT}_q$ , 8 out of 12 experiments in NCAR-CESM1, 12 out of 14 experiments in GFDL-CM3, and 6 out of 8 experiments in GISS-E2-R exhibit positive responses, thus consistent with the experiment mean. In two of the individual experiments (SABB in NCAR-CESM1 and IBC in GISS-E2-R), the Arctic warms significantly (see figure 1) yet  $\Delta\text{AHT}_q$  is negative, indicating that processes other than enhanced poleward moisture transport must be driving the Arctic warming in these experiments. In general though, the processes that we have identified as driving the mean Arctic warming (including enhanced poleward moisture transport) also contribute to warming in the individual experiments.

We now turn our attention to the spread in the Arctic SAT response across the model experiments. Figure 7 shows the SAT response plotted versus each term in the perturbation energy budget (equation (5)) for the three models. In all models, there is a statistically significant positive correlation between the Arctic SAT response and the moisture transport response (figures 7(e), (j) and (o)). In other words, model experiments that exhibit the greatest amount of Arctic warming tend to be the experiments with the largest increases in moisture transport into the Arctic. Correlations between the Arctic SAT response and the other terms in the energy budget are generally not statistically significant, with the exceptions of a significant positive correlation between  $\Delta\text{SAT}$  and  $\Delta F$  (figure 7(f)) and a significant negative correlation between  $\Delta\text{SAT}$  and  $\Delta\text{AHT}_{\text{dse}}$  (figure 7(i)) in GFDL-CM3.

Given the importance of the moisture transport response for both the mean Arctic warming (figure 6) and the warming spread (figure 7), we wish to better understand the factors controlling this response. Increased poleward moisture transport in the extratropics with warming is a direct consequence of warming-induced increases in lower-tropospheric water vapor (Held and Soden 2006). Because of the



nonlinear dependence of the saturation vapor pressure on temperature—as given by the Clausius–Clapeyron relationship—these water vapor increases are larger at warmer low latitudes than at colder high latitudes (even despite polar-amplified warming), which strengthens the meridional humidity gradient and drives the increased poleward moisture transport (e.g. Graversen and Burtu 2016, Previdi *et al* 2021). Thus, the mean increase in moisture transport into the Arctic in our model experiments (figure 6) is an expected response to the simulated mean warming together with the nonlinearity of the Clausius–Clapeyron relationship. One might also expect that  $\Delta\text{AHT}_q$  would increase across the model experiments in proportion to the increase in average warming (see also Held and Soden 2006). Indeed, we find a strong and statistically significant positive correlation between  $\Delta\text{AHT}_q$  and the globally-averaged SAT response ( $\Delta\text{SAT}_{\text{glb}}$ ) in all three models (figures 8(a), (c) and (e)). Perhaps not surprisingly, most of the variance in  $\Delta\text{SAT}_{\text{glb}}$  across the experiments can be explained by differences in the globally-averaged ERF (figures 8(b), (d) and (f)); see also Westervelt *et al* 2020).

#### 4. Discussion and conclusions

In this study, we have analyzed the Arctic temperature response to regional aerosol emissions reductions using three fully-coupled chemistry–climate models. We found that the Arctic warms in most model experiments (figure 1), and that this warming is generally amplified relative to the global mean warming, particularly during non-summer months (figures 5 and S3). The perturbation atmospheric energy budget was analyzed in order to better understand both the mean Arctic warming (i.e. the response averaged over all experiments) and the warming spread across the experiments. In both cases, changes in atmospheric moisture transport into the Arctic are important. There is a mean increase in moisture transport into the Arctic in all three models (figure 6), which is the largest contributor to the mean Arctic warming in two of the models (GFDL-CM3 and GISS-E2-R). Increases in moisture transport into the Arctic tend to be largest in the model experiments where the Arctic warms the most (figures 7(e), (j) and (o)). Our results therefore support several previous studies (e.g. Flannery 1984, Cai 2005, Cai and Lu 2007, Langen and Alexeev 2007, Graversen and Burtu 2016, Yoshimori *et al* 2017, Merlis and Henry 2018, Graversen and Langen 2019) that have suggested that enhanced poleward moisture transport contributes significantly to Arctic warming and AA. This enhanced moisture transport warms the polar region by strengthening the greenhouse effect over the Arctic, both directly and by increasing Arctic cloudiness (Previdi *et al* 2021).

Increased poleward moisture transport into the Arctic (and in the extratropics more generally) is a robust response of the hydrological cycle to global warming (Held and Soden 2006). Accordingly, the moisture transport response ( $\Delta\text{AHT}_q$ ) in our model experiments increases in proportion to the global mean SAT response ( $\Delta\text{SAT}_{\text{glob}}$ ; see figures 8(a), (c) and (e)). This being said, not all of the variance in  $\Delta\text{AHT}_q$  across the experiments can be explained by differences in  $\Delta\text{SAT}_{\text{glob}}$ . In NCAR-CESM1 (figure 8(a)), most of the variance in  $\Delta\text{AHT}_q$  cannot be explained by  $\Delta\text{SAT}_{\text{glob}}$ . In this model, we find that a better predictor of  $\Delta\text{AHT}_q$  is the ERF averaged over NH midlatitudes ( $30^\circ\text{N}$ – $60^\circ\text{N}$ ), with these two variables significantly correlated ( $r = 0.83$ ) across the experiments. A positive correlation between  $\Delta\text{AHT}_q$  and the NH midlatitude ERF also exists in GFDL-CM3 and GISS-E2-R ( $r = 0.71$  and  $r = 0.46$ , respectively), but it is weaker and statistically insignificant in GISS-E2-R. In the latter two models,  $\Delta\text{AHT}_q$  is more strongly correlated with the global mean ERF ( $r = 0.79$  in GFDL-CM3 and  $r = 0.73$  in GISS-E2-R) and SAT response (figures 8(c) and (e)). (The correlation between  $\Delta\text{AHT}_q$  and the global mean ERF in NCAR-CESM1 is relatively weak and insignificant,  $r = 0.35$ .) Thus, the most important factors controlling the moisture transport response to regional aerosol emissions reductions differ somewhat between models.

Other aspects of the climate response to these emissions reductions similarly exhibit model dependence. As noted in section 3.1, there is no correlation in the Arctic SAT response across the experiments between different models. This lack of correlation persists even when the Arctic SAT response is normalized by the global mean ERF (not shown). Additionally, in some cases, the same aerosol perturbation can lead to quite different spatial patterns of Arctic SAT response in different models (figures 2–4 and S1, S2). Finally, our analysis of the perturbation atmospheric energy budget has revealed that certain energy budget terms—specifically, the local radiative forcing and feedbacks and the OHU response—make opposite-signed contributions to the mean Arctic SAT response in different models (figure 6).

Comparing the models across such a diverse set of aerosol perturbation experiments makes it difficult to identify the causes of these model differences. Such differences may arise due to different model sensitivities to emissions perturbations from a particular region(s), or of a particular aerosol type(s), or some combination of the two (and possibly other reasons as well). In this regard, it may be informative to compare the models across a subset of more similar experiments. To test this, we computed the correlation in the Arctic SAT response across just the  $\text{SO}_2$  perturbation experiments in different pairs of models. For this subset, we find correlations of  $r = 0.92$  between NCAR-CESM1 and GFDL-CM3,  $r = 0.45$  between NCAR-CESM1 and GISS-E2-R, and  $r = 0.11$  between GFDL-CM3 and GISS-E2-R. The correlation between NCAR-CESM1 and GFDL-CM3 is significant at the 90% level even despite the very small sample size ( $N = 4$ ). This suggests that the lack of correlation between these models across the full set of experiments ( $r = 0.27$ ; see section 3.1) likely cannot be explained by different model sensitivities to regional  $\text{SO}_2$  emissions. Given the difficulty of establishing statistically robust results using only a subset of the model experiments, we do not pursue this further. This example nevertheless serves to illustrate the potential value of comparing the models across a more similar set of aerosol perturbations in order to better understand the causes of the model differences described above.

In closing, our results underscore the importance of adopting a multi-model framework when assessing the climate response to aerosol forcing, so as to be able to distinguish between robust and model-dependent aspects of the response. Along these lines, the ongoing Regional Aerosol Model Intercomparison Project (RAMIP; Wilcox *et al* 2022) is developing a new set of Earth System Model simulations (using CMIP6 models) in which the emissions of anthropogenic aerosols and their precursors are perturbed in several world regions (East Asia, South Asia, Africa, and the Middle East). These emissions perturbations are realistic transient perturbations based on different assumed Shared Socioeconomic Pathway future scenarios (Rao *et al* 2017, Riahi *et al* 2017), in contrast to the idealized instantaneous emissions perturbations considered in the present study. Analysis of RAMIP results will therefore allow for continued exploration of the Arctic climate response to regional aerosol emissions changes—importantly, within a framework that is relevant for near-term Arctic climate change over the next few decades.

## Data availability statements

The data cannot be made publicly available upon publication because the cost of preparing, depositing and hosting the data would be prohibitive within the terms of this research project. The data that support the findings of this study are available upon reasonable request from the authors.



## Acknowledgments

Climate modeling at GISS is supported by the NASA Modeling, Analysis and Prediction program. Resources supporting this work were provided by the NASA High-End Computing (HEC) Program through the NASA Center for Climate Simulation (NCCS) at Goddard Space Flight Center.

## ORCID iDs

Michael Previdi  <https://orcid.org/0000-0001-7701-1849>

Arlene M Fiore  <https://orcid.org/0000-0003-0221-2122>

Daniel M Westervelt  <https://orcid.org/0000-0003-0806-9961>

Gustavo Correa  <https://orcid.org/0000-0002-0098-7322>

## References

- Acosta Navarro J C, Varma V, Riipinen I, Seland Ø, Kirkevåg A, Struthers H, Iversen T, Hansson H-C and Ekman A M L 2016 Amplification of Arctic warming by past air pollution reductions in Europe *Nat. Geosci.* **9** 277–81
- Aizawa T, Oshima N and Yukimoto S 2022 Contributions of anthropogenic aerosol forcing and multidecadal internal variability to mid-20th century Arctic cooling—CMIP6/DAMIP multimodel analysis *Geophys. Res. Lett.* **49** e2021GL097093
- Audette A, Fajber R A, Kushner P J, Wu Y, Peings Y, Magnusdottir G, Eade R, Sigmond M and Sun L 2021 Opposite responses of the dry and moist eddy heat transport into the Arctic in the PAMIP experiments *Geophys. Res. Lett.* **48** e2020GL089990
- Block K, Schneider F A, Mülmenstädt J, Salzmann M and Quaas J 2020 Climate models disagree on the sign of total radiative feedback in the Arctic *Tellus A* **72** 1–14
- Cai M 2005 Dynamical amplification of polar warming *Geophys. Res. Lett.* **32** L22710
- Cai M and Lu J 2007 Dynamical greenhouse-plus feedback and polar warming amplification. Part II: meridional and vertical asymmetries of the global warming *Clim. Dyn.* **29** 375–91
- Chylek P, Folland C, Klett J D, Wang M, Hengartner N, Lesins G and Dubey M K 2022 Annual mean Arctic amplification 1970–2020: observed and simulated by CMIP6 climate models *Geophys. Res. Lett.* **49** e2022GL099371
- Conley A J, Westervelt D M, Lamarque J-F, Fiore A M, Shindell D T, Correa G, Faluvegi G and Horowitz L W 2018 Multimodel surface temperature responses to removal of U.S. sulfur dioxide emissions *J. Geophys. Res. Atmos.* **123** 2773–96
- Donner L J et al 2011 The dynamical core, physical parameterizations, and basic simulation characteristics of the atmospheric component AM3 of the GFDL global coupled model CM3 *J. Clim.* **24** 3484–519
- England M R 2021 Are multi-decadal fluctuations in Arctic and Antarctic surface temperatures a forced response to anthropogenic emissions or part of internal climate variability? *Geophys. Res. Lett.* **48** e2020GL090631
- Flannery B P 1984 Energy balance models incorporating transport of thermal and latent energy *J. Atmos. Sci.* **41** 414–21
- Forster P M, Richardson T, Maycock A C, Smith C J, Samset B H, Myhre G, Andrews T, Pincus R and Schulz M 2016 Recommendations for diagnosing effective radiative forcing from climate models for CMIP6 *J. Geophys. Res. Atmos.* **121** 12460–75
- Graversen R G and Burtu M 2016 Arctic amplification enhanced by latent energy transport of atmospheric planetary waves *Q. J. R. Meteorol. Soc.* **142** 2046–54
- Graversen R G and Langen P L 2019 On the role of the atmospheric energy transport in  $2 \times \text{CO}_2$ -induced polar amplification in CESM1 *J. Clim.* **32** 3941–56
- Gregory J M, Ingram W J, Palmer M A, Jones G S, Stott P A, Thorpe R B, Lowe J A, Johns T C and Williams K D 2004 A new method for diagnosing radiative forcing and climate sensitivity *Geophys. Res. Lett.* **31** L03205
- Gulev S K et al 2021 Changing state of the climate system *Climate Change 2021: The Physical Science Basis. Contribution of Working Group I to the Sixth Assessment Report of the Intergovernmental Panel on Climate Change* ed V Masson-Delmotte et al (Cambridge University Press) pp 287–422
- Held I M and Soden B J 2006 Robust responses of the hydrological cycle to global warming *J. Clim.* **19** 5686–99
- Hwang Y T, Frierson D M W and Kay J E 2011 Coupling between Arctic feedbacks and changes in poleward energy transport *Geophys. Res. Lett.* **38** L17704
- Langen P L and Alexeev V A 2007 Polar amplification as a preferred response in an idealized aquaplanet GCM *Clim. Dyn.* **29** 305–17
- Lund M T, Myhre G and Samset B H 2019 Anthropogenic aerosol forcing under the Shared Socioeconomic Pathways *Atmos. Chem. Phys.* **19** 13827–39
- Merikanto J, Nordling K, Räisänen P, Räisänen J, O'Donnell D, Partanen A-I and Korhonen H 2021 How Asian aerosols impact regional surface temperatures across the globe *Atmos. Chem. Phys.* **21** 5865–81
- Merlis T M and Henry M 2018 Simple estimates of polar amplification in moist diffusive energy balance models *J. Clim.* **31** 5811–24
- Naik V, Horowitz L W, Fiore A M, Ginoux P, Mao J, Aghedo A M and Levy H 2013 Impact of preindustrial to present-day changes in short-lived pollutant emissions on atmospheric composition and climate forcing *J. Geophys. Res. Atmos.* **118** 1–25
- Najafi M, Zwiers F and Gillett N 2015 Attribution of Arctic temperature change to greenhouse-gas and aerosol influences *Nat. Clim. Change* **5** 246–9
- Neale R B, Gettelman A, Park S, Chen C-C, Lauritzen P H, Williams D L and Taylor M A 2012 Description of the NCAR Community Atmosphere Model (CAM 5.0) *NCAR Technical Note TN-486+STR*, Natl. Center for Atmospheric Research (available at: [www.cesm.ucar.edu/models/cesm1.0/cam/docs/description/cam5\\_desc.pdf](http://www.cesm.ucar.edu/models/cesm1.0/cam/docs/description/cam5_desc.pdf))
- Polvani L M, Previdi M, England M R, Chiodo G and Smith K L 2020 Substantial twentieth-century Arctic warming caused by ozone-depleting substances *Nat. Clim. Change* **10** 130–3
- Previdi M, Smith K L and Polvani L M 2021 Arctic amplification of climate change: a review of underlying mechanisms *Environ. Res. Lett.* **16** 093003
- Rantanen M, Karpechko A Y, Lipponen A, Nordling K, Hyvärinen O, Ruosteenoja K, Vihma T and Laaksonen A 2022 The Arctic has warmed nearly four times faster than the globe since 1979 *Commun. Earth Environ.* **3** 168
- Rao S et al 2017 Future air pollution in the Shared Socio-Economic Pathways *Glob. Environ. Change* **42** 346–58

- Riahi K *et al* 2017 The Shared Socioeconomic Pathways and their energy, land use, and greenhouse gas emissions implications: an overview *Glob. Environ. Change* **42** 153–68
- Santer B D, Wigley T M L, Boyle J S, Gaffen D J, Hnilo J J, Nychka D, Parker D E and Taylor K E 2000 Statistical significance of trends and trend differences in layer-average atmospheric temperature time series *J. Geophys. Res.* **105** 7337–56
- Schmidt G A *et al* 2014 Configuration and assessment of the GISS ModelE2 contributions to the CMIP5 archive *J. Adv. Model. Earth Syst.* **6** 141–84
- Skific N and Francis J A 2013 Drivers of projected change in Arctic moist static energy transport *J. Geophys. Res. Atmos.* **118** 2748–61
- Smith C J *et al* 2020 Effective radiative forcing and adjustments in CMIP6 models *Atmos. Chem. Phys.* **20** 9591–618
- Wang Y, Jiang J H, Su H, Yong-Sang C, Huang L, Guo J and Yung Y L 2018 Elucidating the role of anthropogenic aerosols in Arctic sea ice variations *J. Clim.* **31** 99–114
- Westervelt D M, Conley A J, Fiore A M, Lamarque J-F, Shindell D, Previdi M, Faluvegi G, Correa G and Horowitz L W 2017 Multimodel precipitation responses to removal of U.S. sulfur dioxide emissions *J. Geophys. Res. Atmos.* **122** 5024–38
- Westervelt D M, Conley A J, Fiore A M, Lamarque J-F, Shindell D, Previdi M, Mascioli N R, Faluvegi G, Correa G and Horowitz L W 2018 Connecting regional aerosol emissions reductions to local and remote precipitation responses *Atmos. Chem. Phys.* **18** 12461–75
- Westervelt D M, Mascioli N R, Fiore A M, Conley A J, Lamarque J-F, Shindell D T, Faluvegi G, Previdi M, Correa G and Horowitz L W 2020 Local and remote mean and extreme temperature response to regional aerosol emissions reductions *Atmos. Chem. Phys.* **20** 3009–27
- Wilcox L J *et al* 2022 The regional aerosol model intercomparison project (RAMIP) *Geosci. Model Dev. Discuss.* accepted (<https://doi.org/10.5194/gmd-2022-249>)
- Yang Q, Bitz C M and Doherty S J 2014 Offsetting effects of aerosols on Arctic and global climate in the late 20th century *Atmos. Chem. Phys.* **14** 3969–75
- Yoshimori M, Abe-Ouchi A and Láiné A 2017 The role of atmospheric heat transport and regional feedbacks in the Arctic warming at equilibrium *Clim. Dyn.* **49** 3457–72
- Zwiers F W and von Storch H 1995 Taking serial correlation into account in tests of the mean *J. Clim.* **8** 336–51