

Supplementary Data for “Arctic Warming in Response to Regional Aerosol Emissions Reductions”

Michael Previdi^{1*}, Jean-François Lamarque², Arlene M. Fiore^{1,3,4}, Daniel M. Westervelt^{1,5}, Drew T. Shindell⁶, Gustavo Correa¹, and Gregory Faluvegi^{5,7}

¹Lamont-Doherty Earth Observatory of Columbia University, Palisades, NY, USA

²National Center for Atmospheric Research, Boulder, CO, USA

³Department of Earth and Environmental Sciences, Columbia University, New York, NY, USA

⁴Department of Earth, Atmospheric, and Planetary Sciences, Massachusetts Institute of Technology, Cambridge, MA, USA

⁵NASA Goddard Institute for Space Studies, New York, NY, USA

⁶Nicholas School of the Environment, Duke University, Durham, NC, USA

⁷Center for Climate Systems Research, Columbia University, New York, NY, USA

*Correspondence to mprevidi@ldeo.columbia.edu

Annual SAT response: NCAR-CESM1

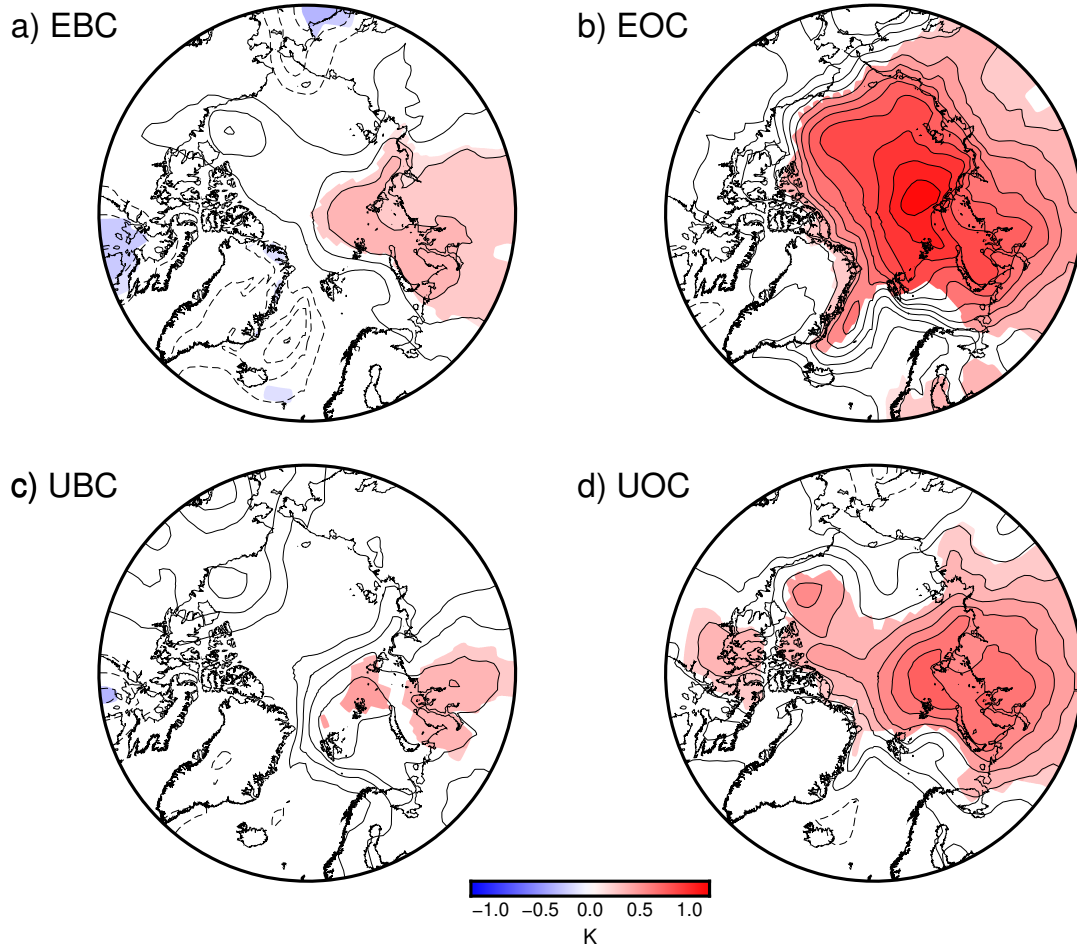


Figure S1. As in Figure 2, but for the additional experiments with NCAR-CESM1.

Annual SAT response: GFDL-CM3

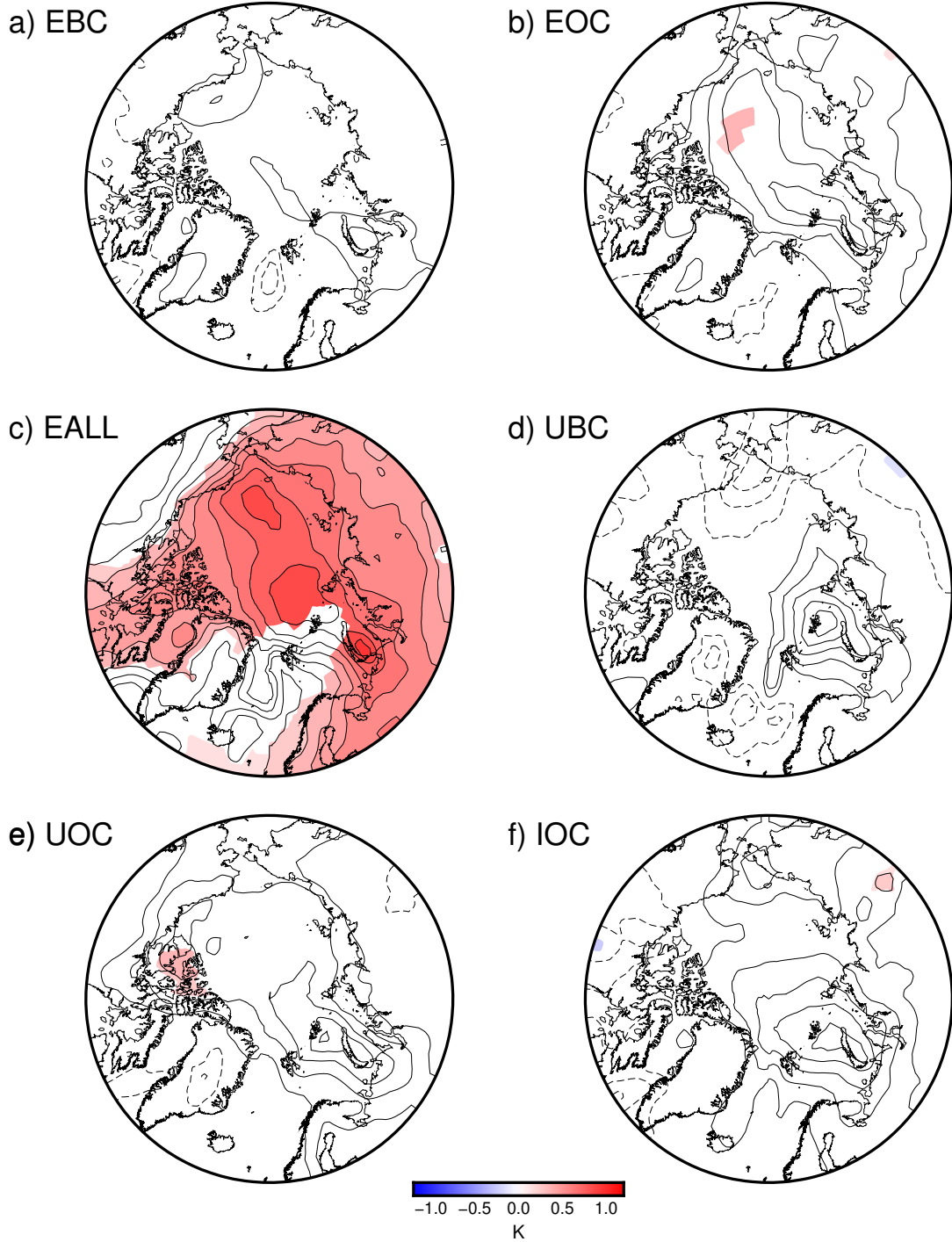


Figure S2. As in Figure 2, but for the additional experiments with GFDL-CM3.

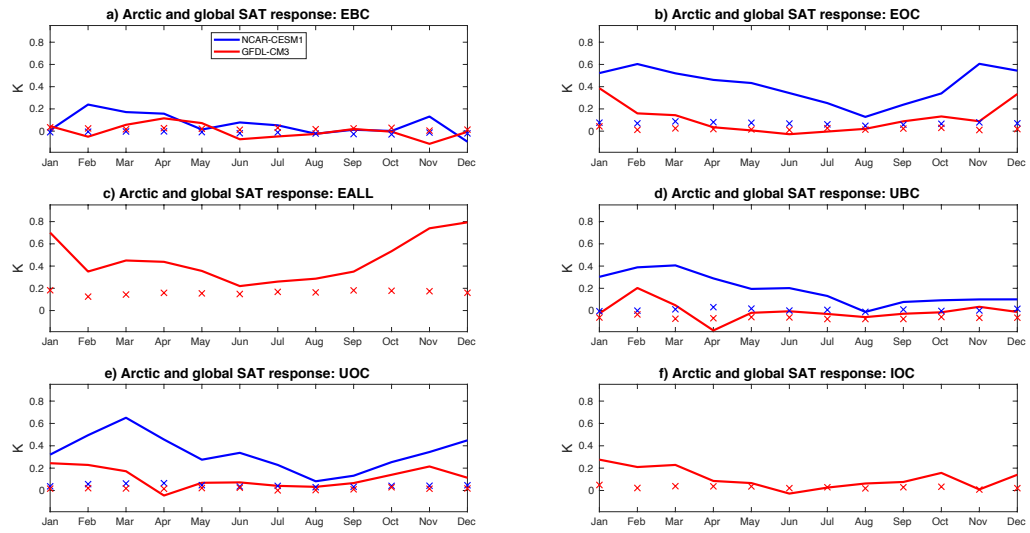


Figure S3. As in Figure 5, but for the additional experiments with NCAR-CESM1 and GFDL-CM3.