

The Society for the Advancement
of Material and Process Engineering

Design for Inspection: A Formalized Approach
to Evaluating the Inspectability of Aerospace
Structures Early in the Design Process



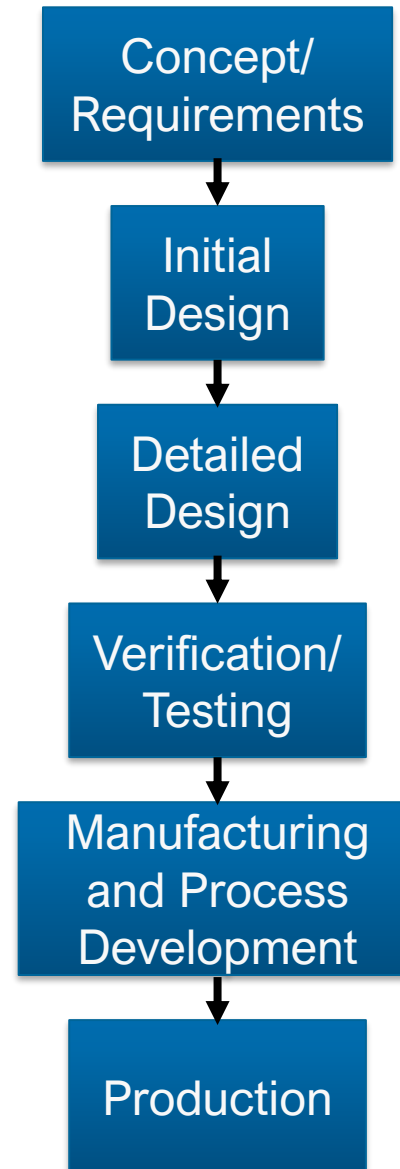


Design for Inspection: A Formalized Approach to Evaluating the Inspectability of Aerospace Structures Early in the Design Process

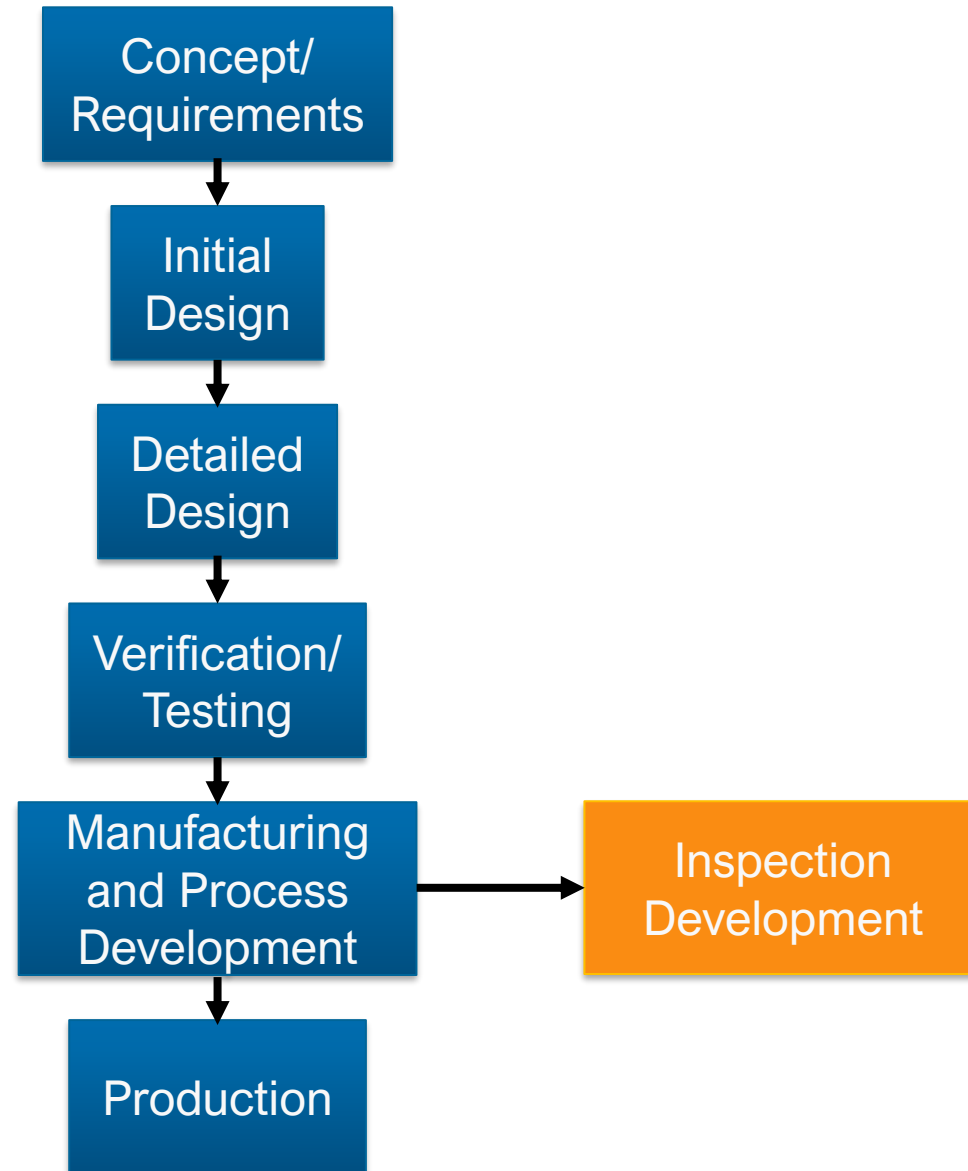
Peter Juarez¹, Starr Dauria², Sébastien Lonne², Bastien Clause², Hong Tat³, Jill Bingham³

¹NASA Langley Research Center, ²Extende, ³Boeing

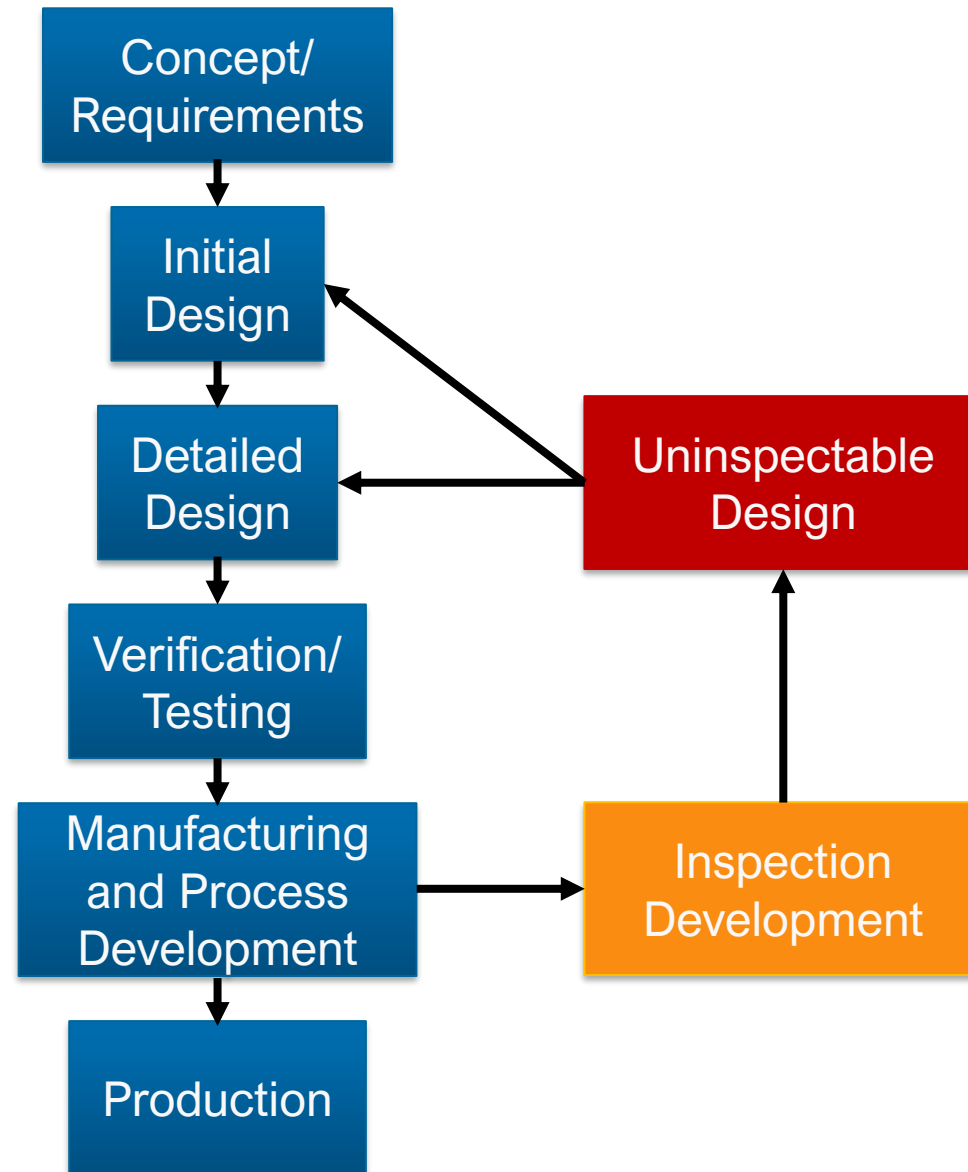
Current Aerospace Workflow



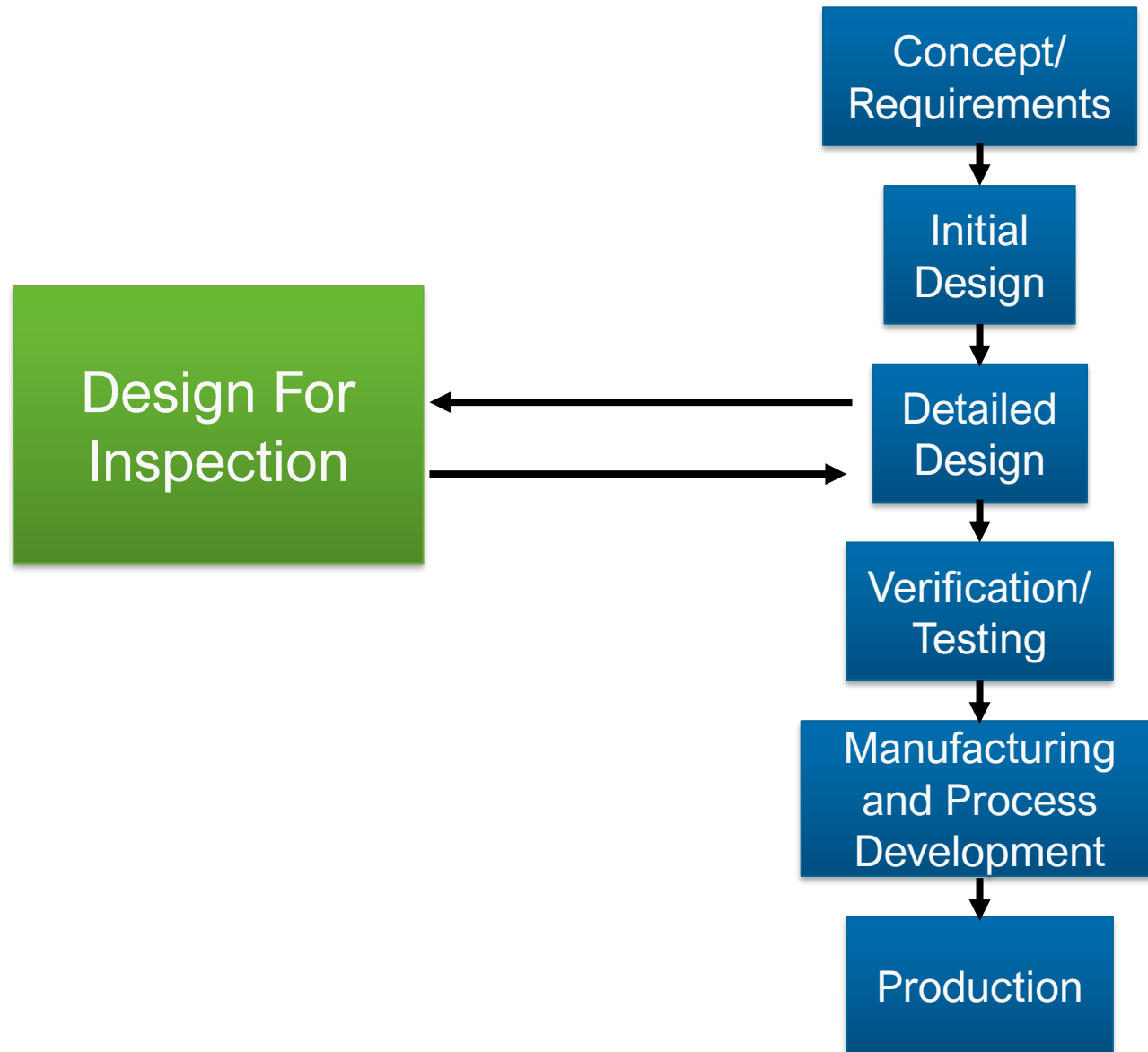
Current Aerospace Workflow



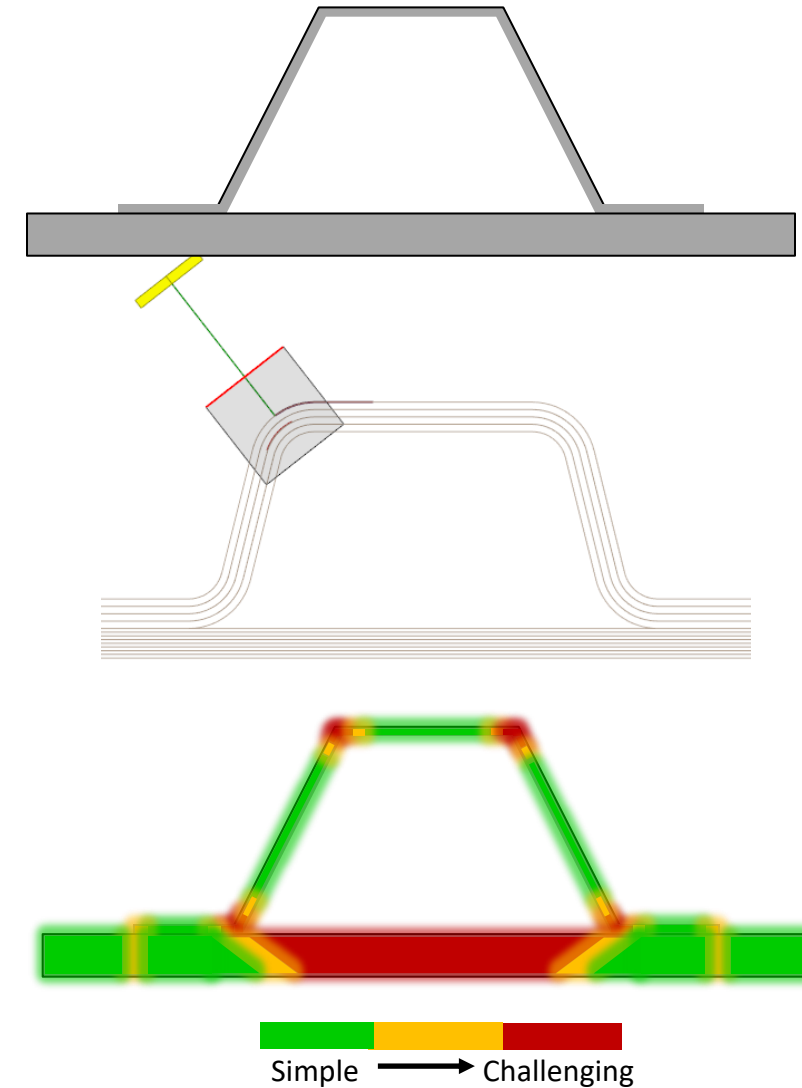
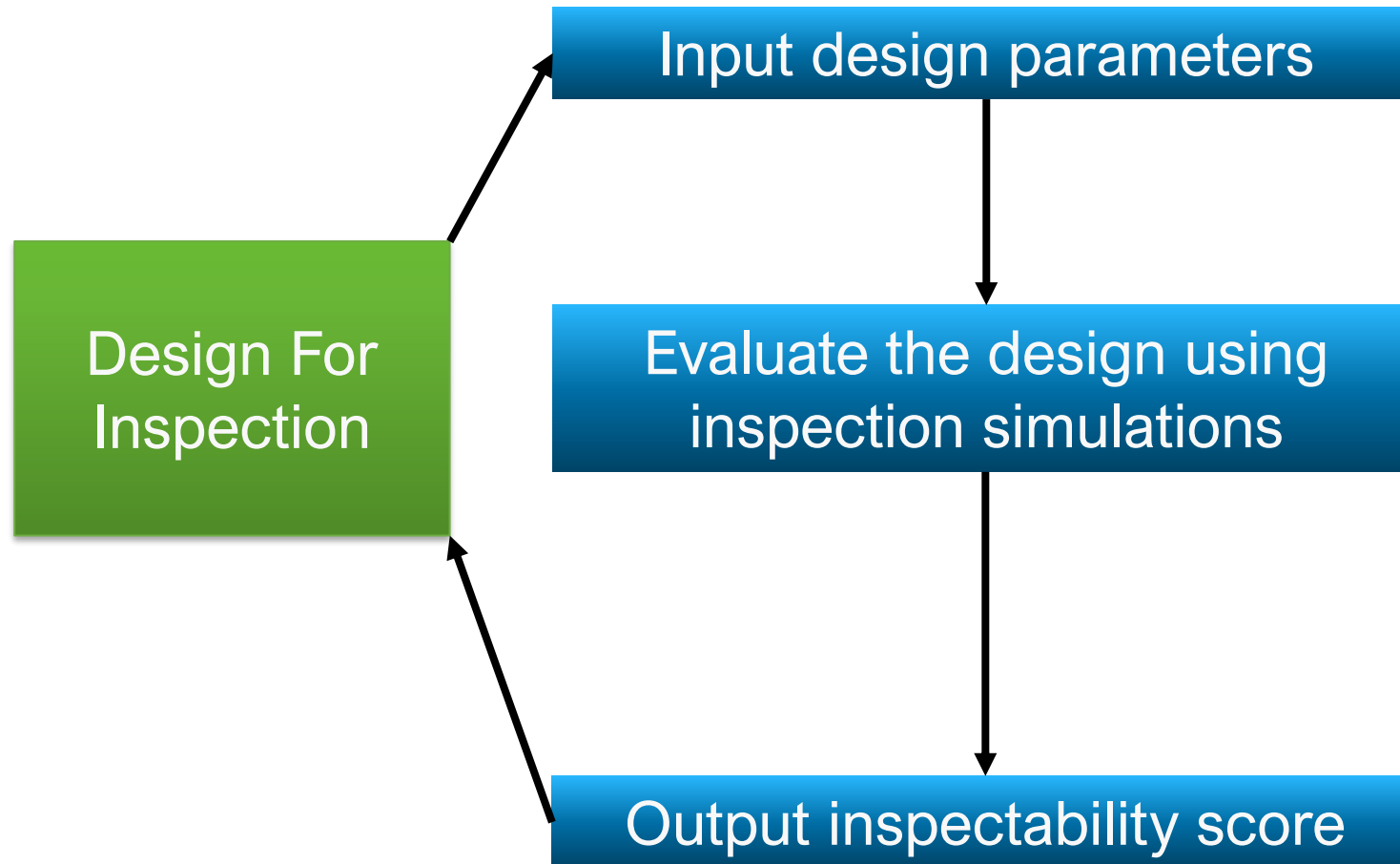
Current Aerospace Workflow



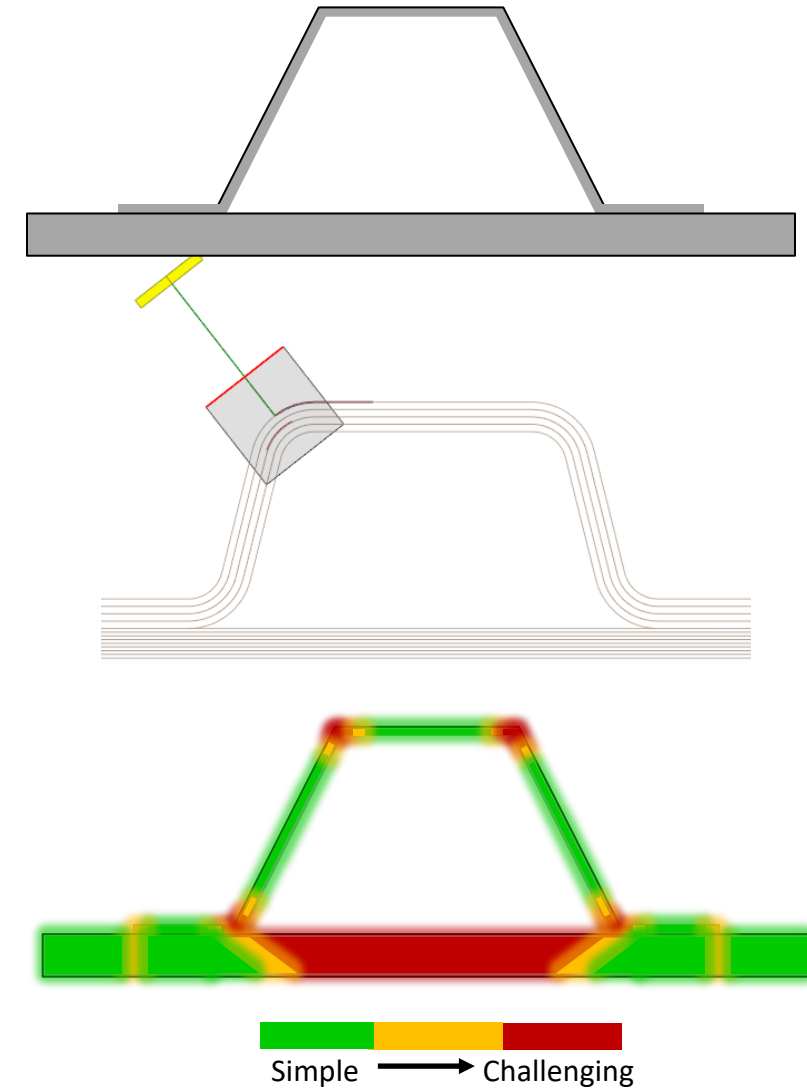
Proposed Aerospace Workflow



Design For Inspection Framework



Design For Inspection Framework



Question DFI is trying to answer

How well can we find a defect in this design?

Question DFI is trying to answer

~~How well can we find a defect in this design?~~

How much does the design
change the physics of detecting
a defect?

Inspectability Metric Tenets

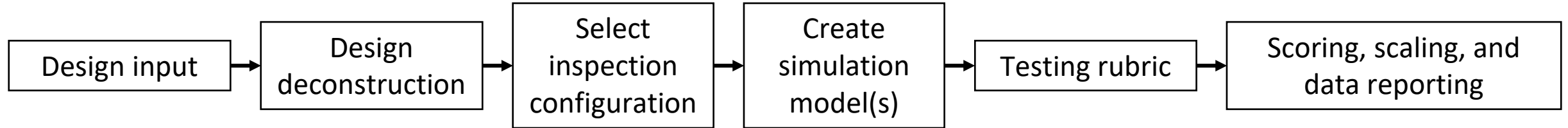
Agile

Versatile

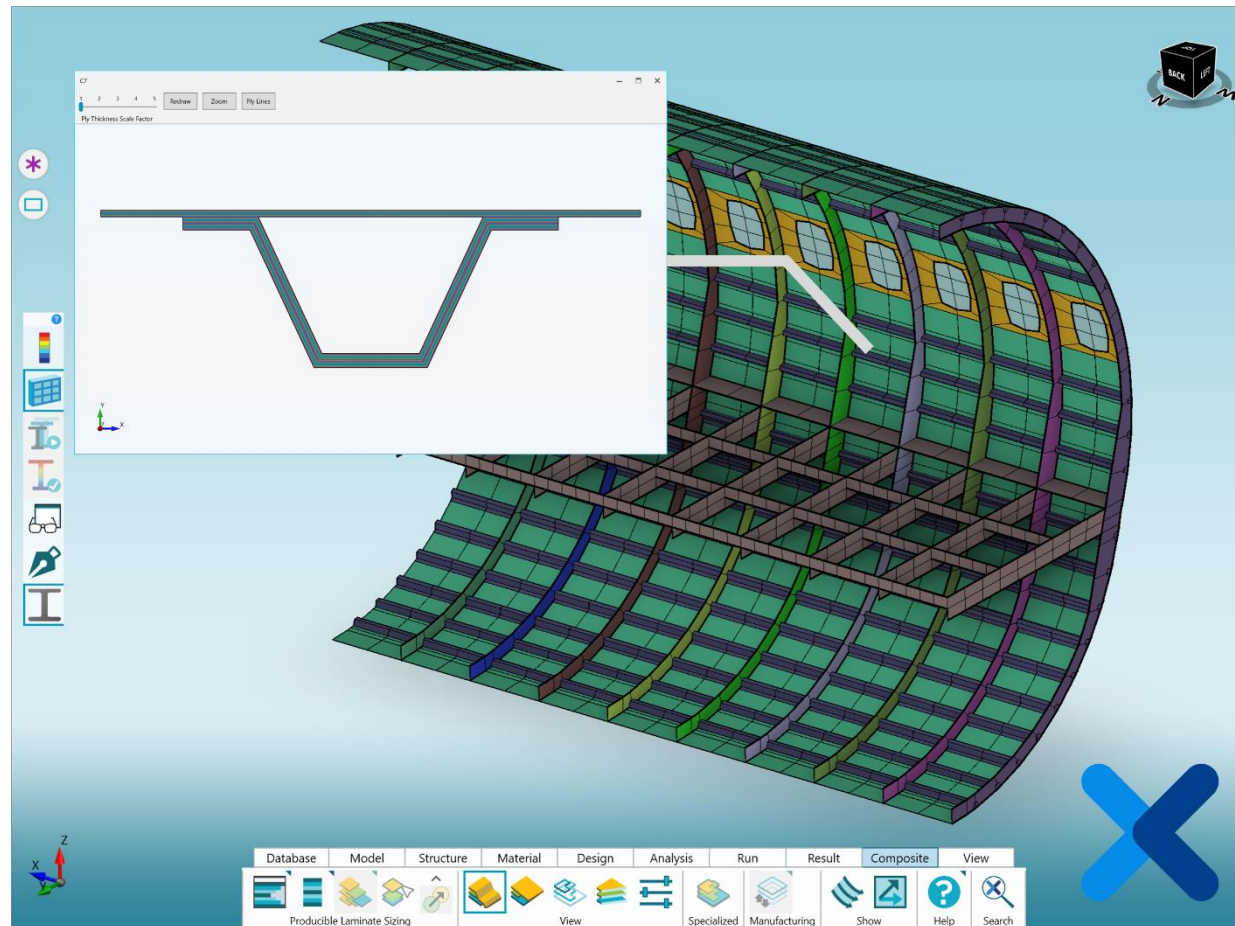
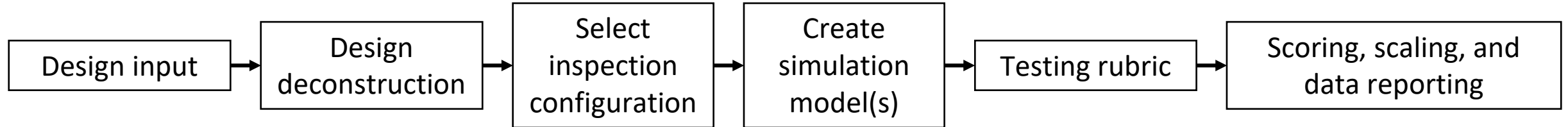
Communicable

Inspectability Metric Overview

Inspectability Metric Overview

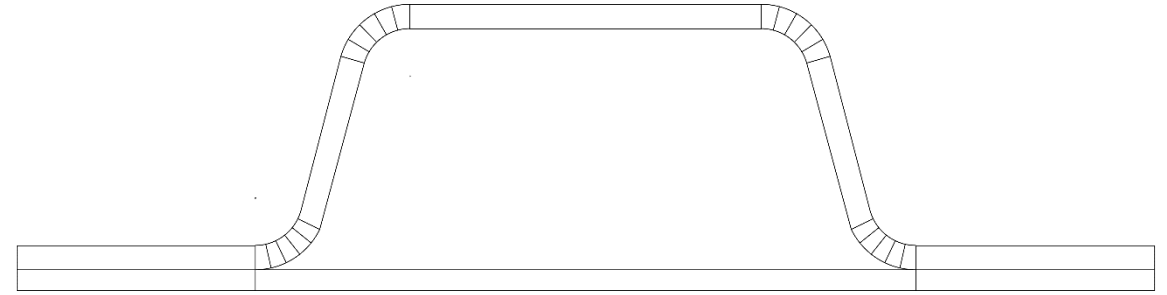
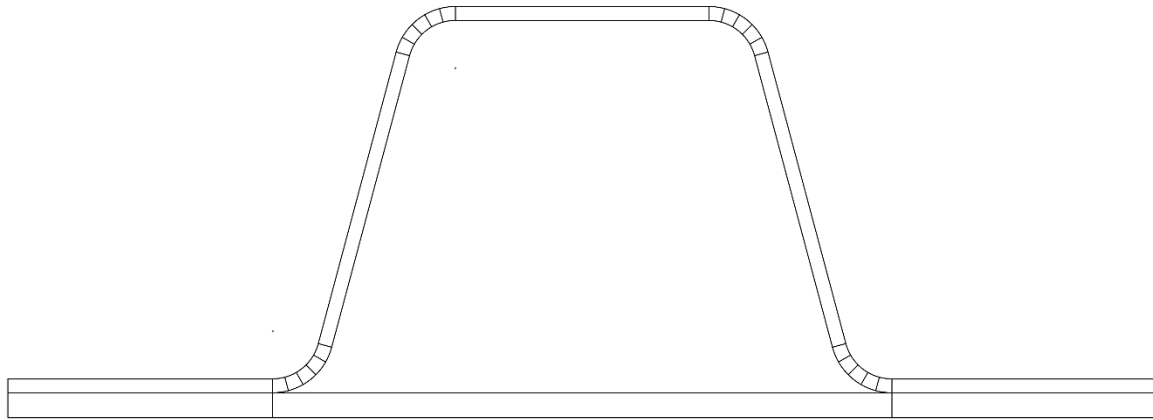
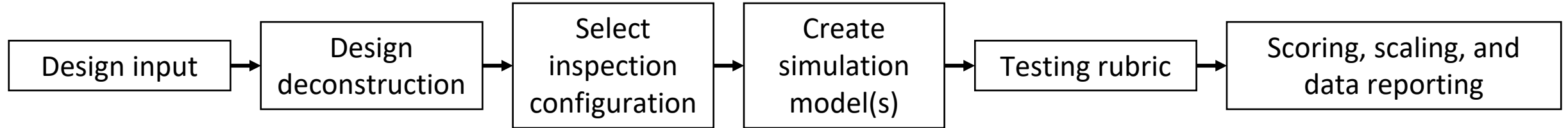


Inspectability Metric Overview



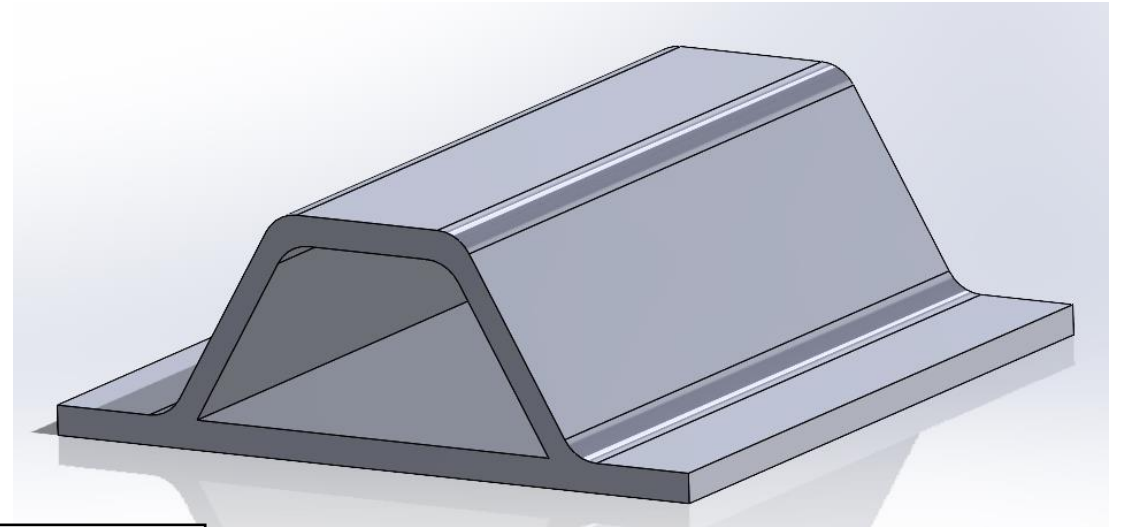
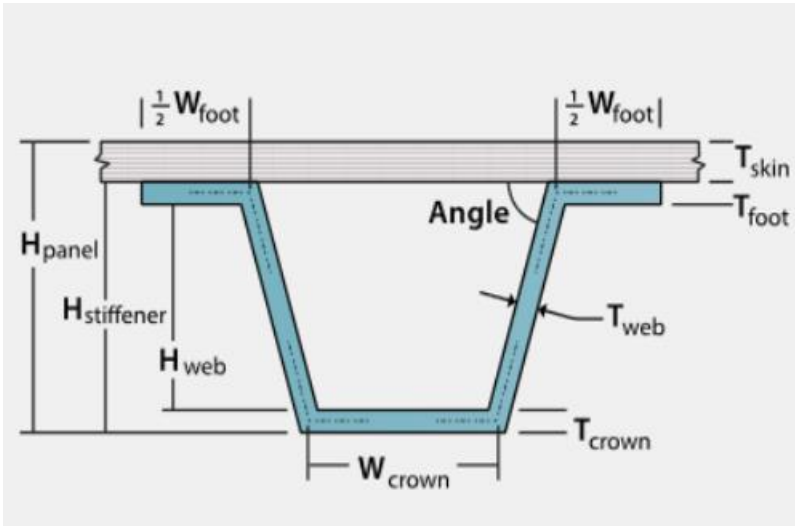
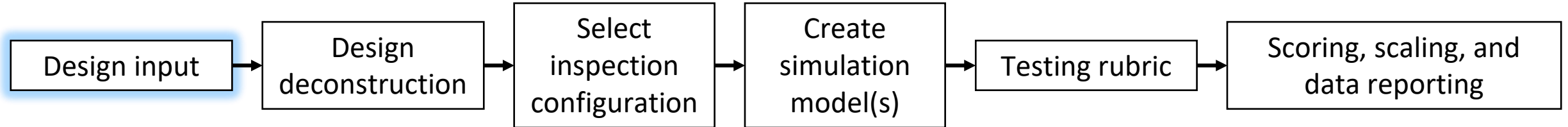
Images used with permission from Collier Aerospace

Inspectability Metric Overview



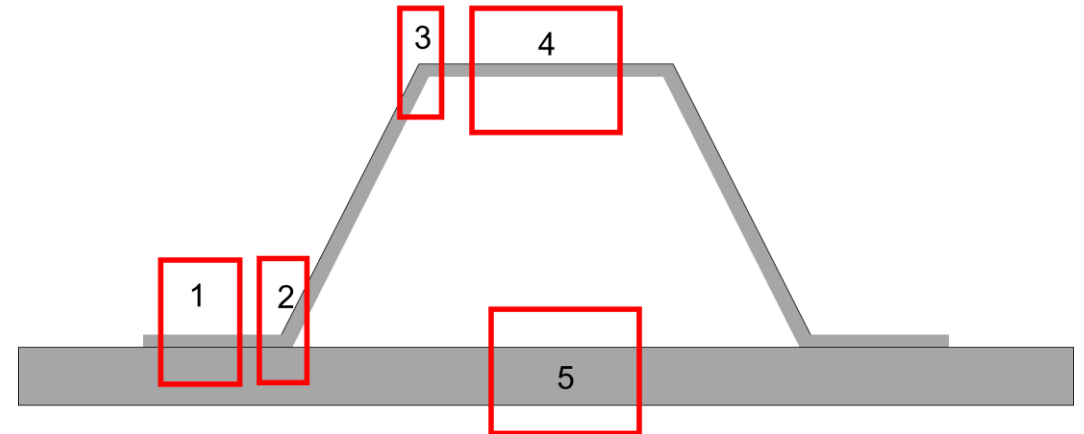
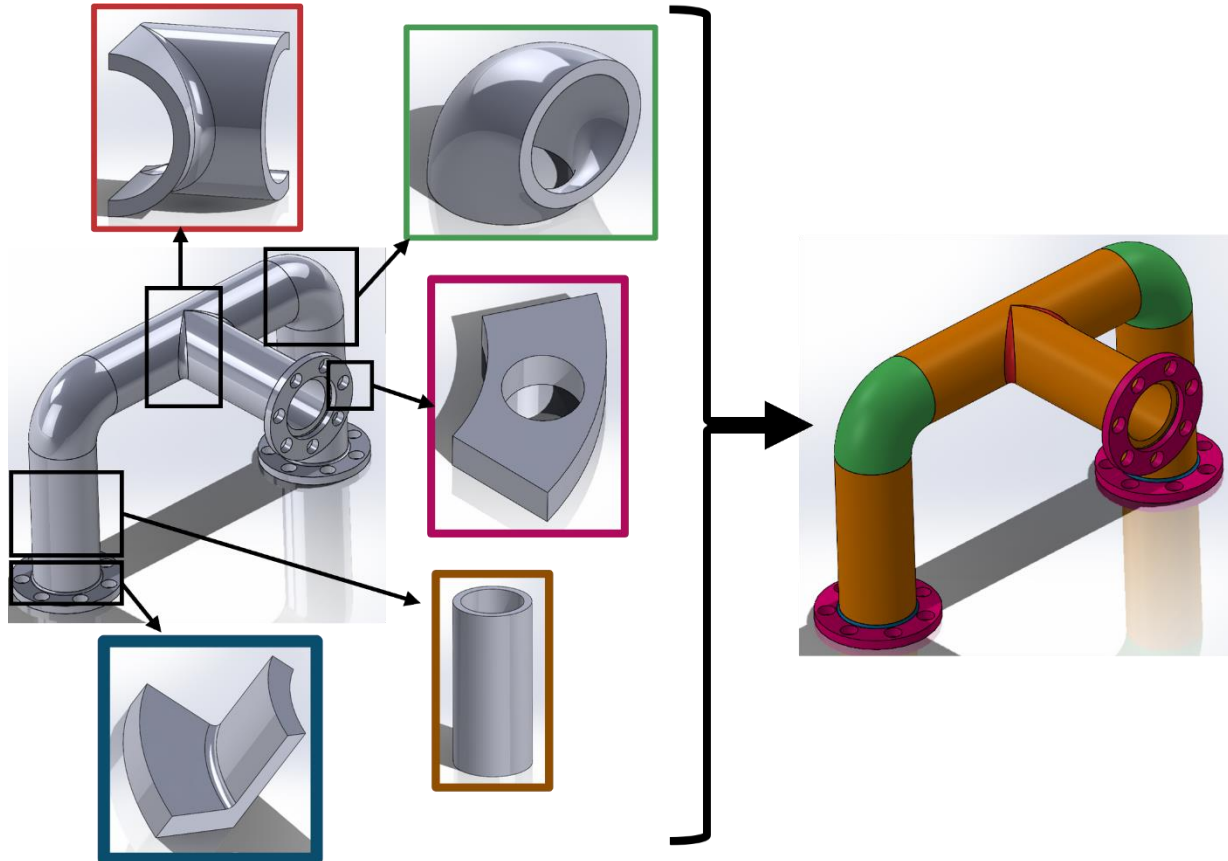
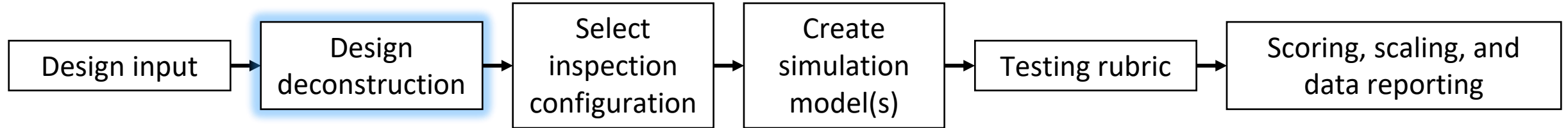
Two generated designs meeting the same requirements

Inspectability Metric Overview

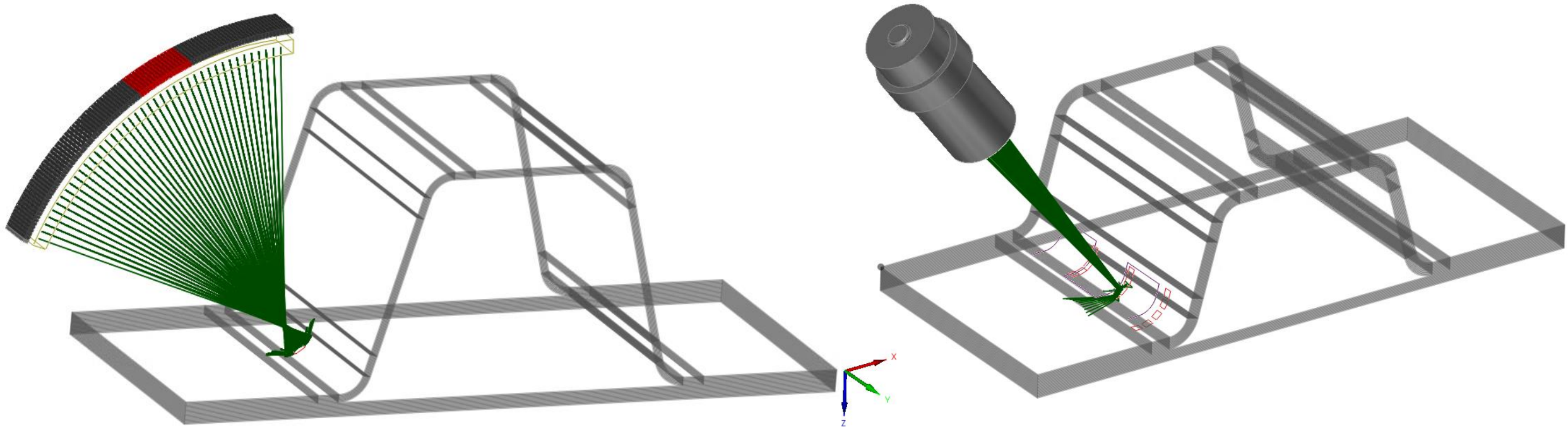
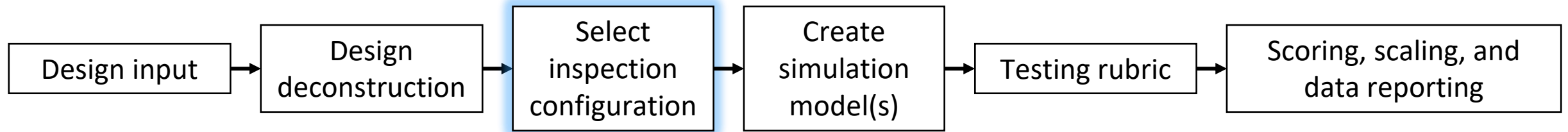


- Requirements (if known)
- Logistical considerations (accessible surfaces, clearance)
- Material properties
- Etc.

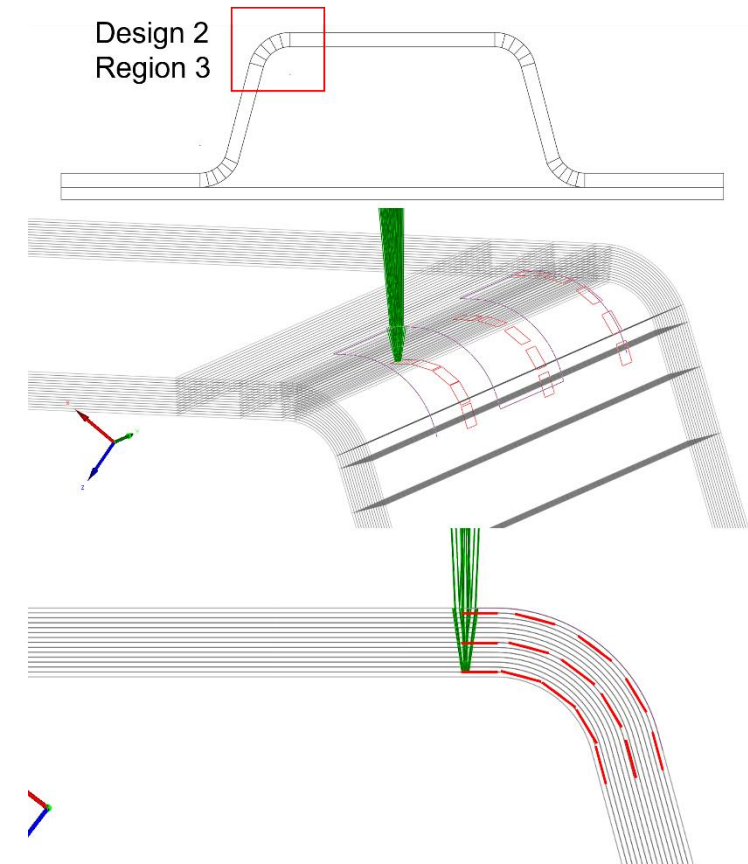
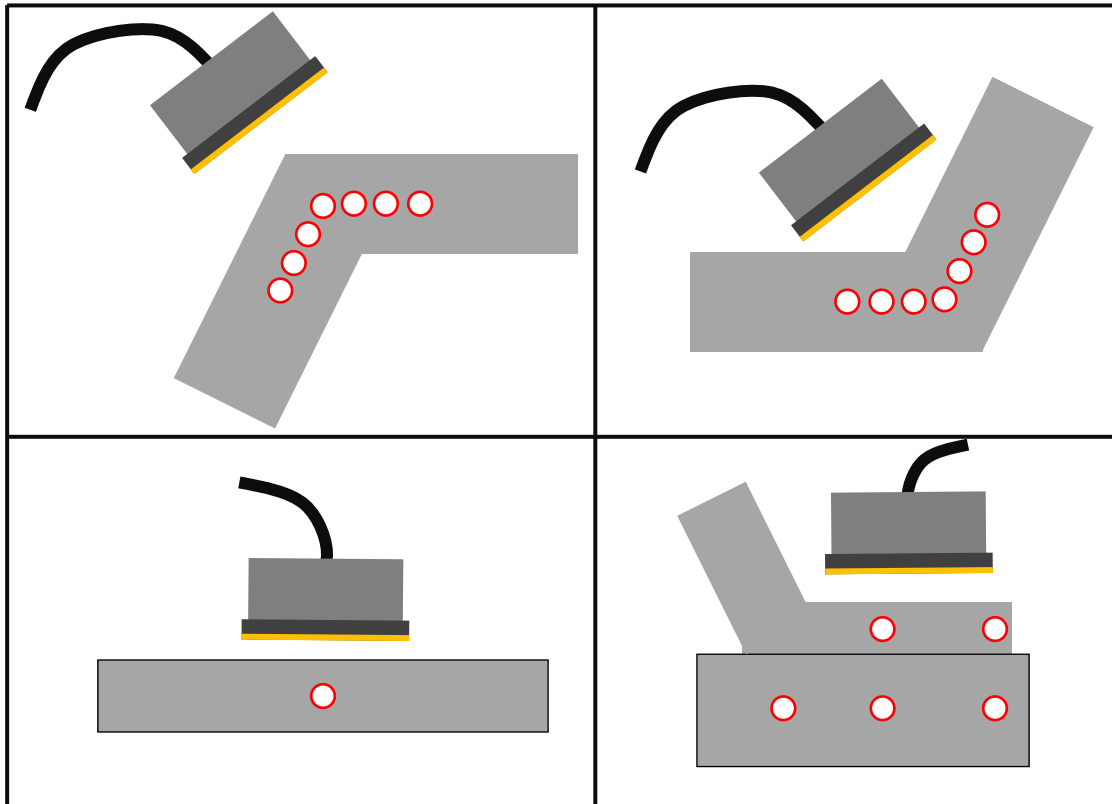
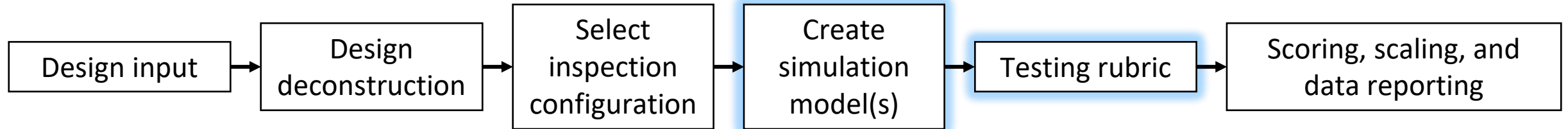
Inspectability Metric Overview



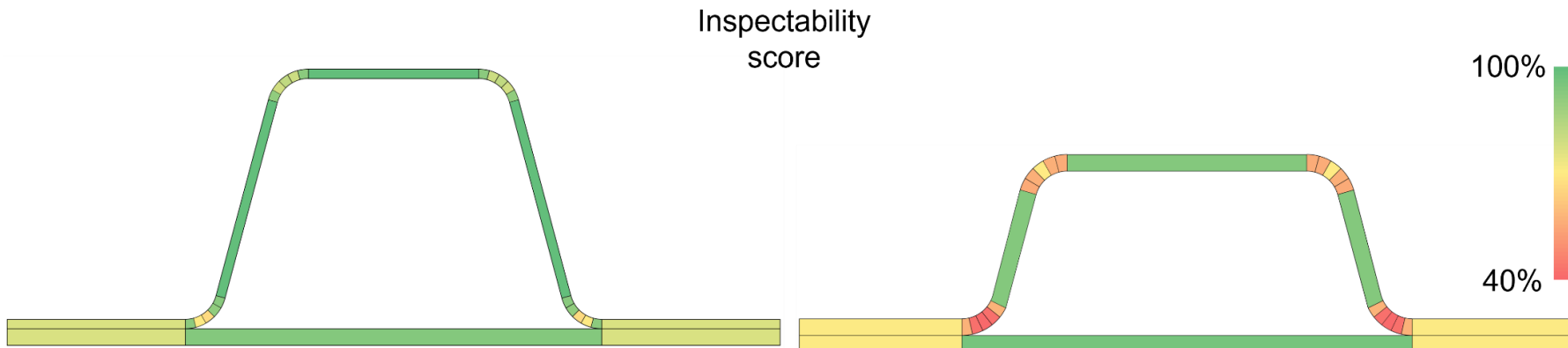
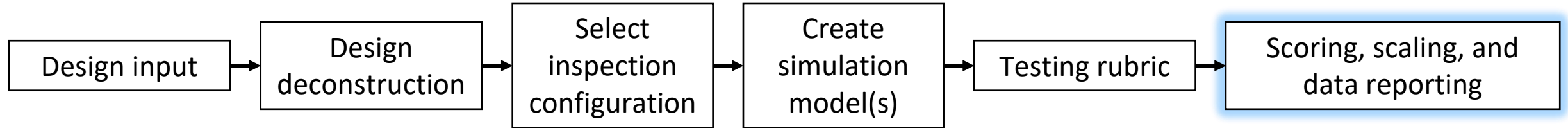
Inspectability Metric Overview



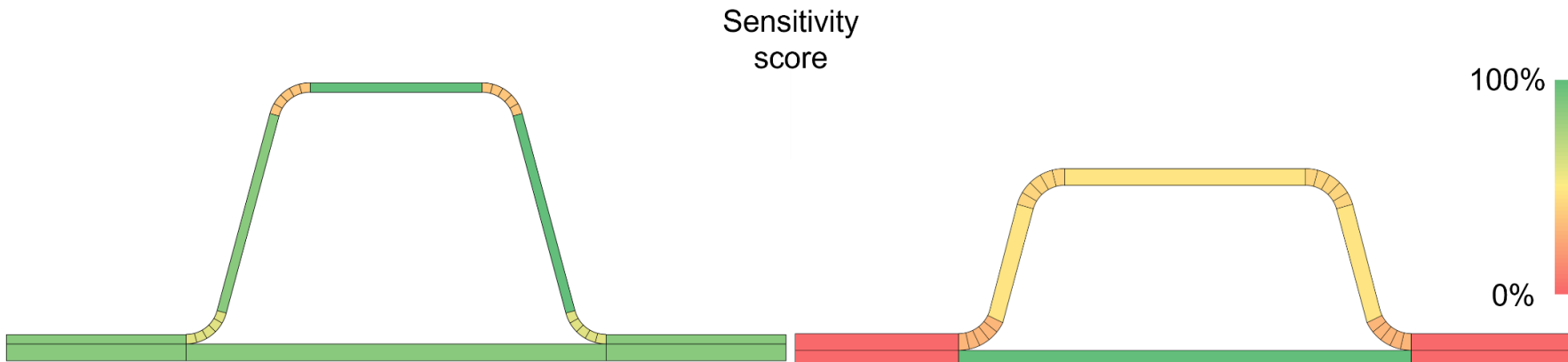
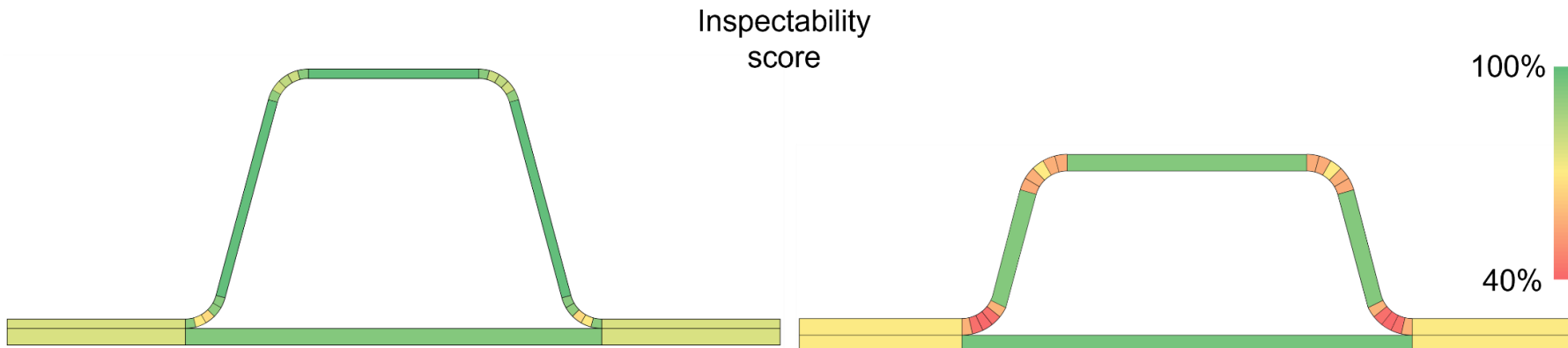
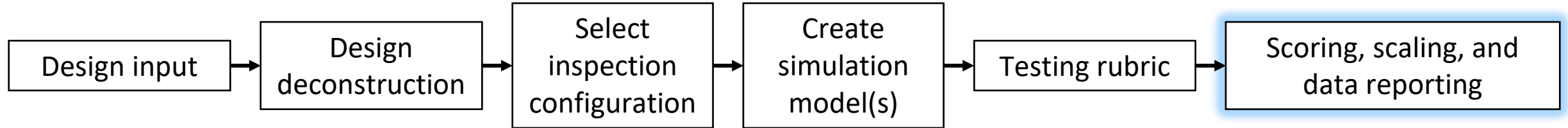
Inspectability Metric Overview



Inspectability Metric Overview



Inspectability Metric Overview



Summary and Future Work

- Demonstrated the principles of DFI and the inspectability metric
- Showed which of the two hat stiffener designs were more inspectable
- Showed what parts of the design influenced inspectability and why

Summary and Future Work

- Future work:
 - Continue automating the process
 - Apply to additive manufacturing, generative designs, and other modalities such as X-Ray CT

